



Rapid intraoperative histology of unprocessed surgical specimens via fibre-laser-based stimulated Raman scattering microscopy

The Harvard community has made this article openly available. [Please share](#) how this access benefits you. Your story matters

Citation	Orringer, Daniel A., Balaji Pandian, Yashar S. Niknafs, Todd C. Hollon, Julianne Boyle, Spencer Lewis, Mia Garrard, et al. 2017. "Rapid Intraoperative Histology of Unprocessed Surgical Specimens via Fibre-Laser-Based Stimulated Raman Scattering Microscopy." <i>Nature Biomedical Engineering</i> 1 (2) (February 6): 0027. doi:10.1038/s41551-016-0027.
Published Version	doi:10.1038/s41551-016-0027
Citable link	http://nrs.harvard.edu/urn-3:HUL.InstRepos:33471123
Terms of Use	This article was downloaded from Harvard University's DASH repository, and is made available under the terms and conditions applicable to Other Posted Material, as set forth at http://nrs.harvard.edu/urn-3:HUL.InstRepos:dash.current.terms-of-use#LAA

1 **Rapid intraoperative histology of unprocessed surgical specimens**
2 **via fiber-laser-based stimulated Raman scattering microscopy**

3
4 Daniel A. Orringer,^{1*} Balaji Pandian,¹ Yashar S. Niknafs,¹ Todd C. Hollon,¹ Julianne Boyle,¹
5 Spencer Lewis,¹ Mia Garrard,¹ Shawn L. Hervey-Jumper,¹ Hugh J.L. Garton,¹ Cormac O.
6 Maher,¹ Jason A. Heth,¹ Oren Sagher,¹ D. Andrew Wilkinson,¹ Matija Snuderl,^{2,3} Sriram
7 Venneti,⁴ Shakti H. Ramkissoon,^{5,6} Kathryn A. McFadden,⁴ Amanda Fisher-Hubbard,⁴ Andrew
8 P. Lieberman,⁴ Timothy D. Johnson,⁷ X. Sunney Xie,⁸ Jay K. Trautman,⁹ Christian W.
9 Freudiger,⁹ Sandra Camelo-Piragua⁴

10
11 ¹Department of Neurosurgery, University of Michigan Medical School, Ann Arbor, MI 48109,
12 USA

13 ²Department of Pathology, New York University, New York, NY 10016, USA

14 ³Department of Neurology, New York University, New York, NY 10016, USA

15 ⁴Section of Neuropathology, Department of Pathology, University of Michigan Medical School,
16 Ann Arbor, MI 48109, USA

17 ⁵Department of Pathology, Brigham and Women's Hospital, Harvard Medical School, Boston,
18 MA 02115, USA

19 ⁶Department of Medical Oncology, Center for Molecular Oncologic Pathology, Dana Farber
20 Cancer Institute, Boston, MA 02115, USA

21 ⁷Department of Biostatistics, School of Public Health, University of Michigan, Ann Arbor, MI
22 48109, USA

23 ⁸Department of Chemistry and Chemical Biology, Harvard University, Cambridge, MA 02138,
24 USA

25 ⁹Invenio Imaging Inc, Santa Clara, CA 95051, USA

26
27 *Corresponding author. E-mail: dorringe@med.umich.edu

1 **ABSTRACT**

2

3 Conventional methods for intraoperative histopathologic diagnosis are labor- and time-intensive
4 and may delay decision-making during brain tumor surgery. Stimulated Raman scattering (SRS)
5 microscopy, a label-free optical process, has been shown to rapidly detect brain tumor infiltration
6 in fresh, unprocessed human tissues. Previously, the execution of SRS microscopy in a clinical
7 setting has not been possible. We report the first demonstration of SRS microscopy in an
8 operating room using a portable fiber-laser-based microscope in unprocessed specimens from
9 101 neurosurgical patients. Additionally, we introduce an image-processing method, stimulated
10 Raman histology (SRH), which leverages SRS images to create virtual hematoxylin and eosin-
11 stained slides, revealing essential diagnostic features. In a simulation of intraoperative pathologic
12 consultation in 30 patients, the concordance of SRH and conventional histology for predicting
13 diagnosis was nearly perfect ($\kappa > 0.89$) and accuracy exceeded 92%. We also built and validated a
14 multilayer perceptron based on quantified SRH image attributes that predicts brain tumor
15 subtype with 90% accuracy. This study provides insight into how SRH can now be used to
16 improve the surgical care of brain tumor patients.

1 INTRODUCTION

2 The optimal surgical management of brain tumors varies widely depending on histologic
3 subtype. Though some tumors of the central nervous system (CNS) have a distinct gross
4 appearance, others are difficult to differentiate. Consequently, the importance of intraoperative
5 histopathologic diagnosis in brain tumor surgery has been recognized for over 85 years¹.

6 Existing intraoperative histologic techniques, including frozen sectioning and cytologic
7 preparations, require skilled technicians and clinicians working in surgical pathology laboratories
8 to produce and interpret slides². However, the number of centers where brain tumor surgery is
9 performed exceeds the number of board-certified neuropathologists, eliminating the possibility
10 for expert intraoperative consultation in many cases. Even in the most advanced, well-staffed
11 hospitals, turnaround time for intraoperative pathology reporting may delay clinical decision-
12 making during surgery, highlighting the need for an improved system for intraoperative
13 histopathology.

14 The ideal system for intraoperative histopathology would deliver rapid, standardized, and
15 accurate diagnostic images to assist in surgical decision-making. Improved access to
16 intraoperative histologic data would enable examination of clinically relevant histologic
17 variations within a tumor and the assessment of the resection cavity for residual tumor. In
18 addition, given that the percentage of tumor removed at the time of surgery is a major prognostic
19 factor for brain tumor patients³, intraoperative techniques to accurately identify residual tumor
20 are essential.

21 The development of stimulated Raman scattering (SRS) microscopy in 2008 created the
22 possibility of rapid, label-free, high-resolution microscopic imaging of unprocessed tissue
23 specimens⁴. While SRS has been shown to reveal key diagnostic histologic features in brain

1 tumor specimens⁵⁻⁷, major technical hurdles have hindered its clinical translation. SRS
2 microscopy requires two laser pulse trains that are temporally overlapped by less than the pulse
3 duration (ie, <100fs) and spatially overlapped by less than the focal spot size (ie, <100nm).
4 Achieving these conditions typically requires free-space optics mounted on optical tables and
5 state-of-the-art, solid-state, continuously water-cooled lasers that are not suitable for use in a
6 clinical environment⁴.

7 However, leveraging advances in fiber-laser technology⁸, we have engineered a clinical
8 SRS microscope, allowing us to execute SRS microscopy in a patient care setting for the first
9 time. Light guiding by the optical core of the fiber and the novel polarization-maintaining (PM)
10 implementation of the laser source have enabled service-free operation in our operating room for
11 over a year. The system also includes improved noise cancellation electronics for the suppression
12 of high relative intensity noise, one of the major challenges of executing fiber-laser-based SRS
13 microscopy.

14 Using this novel system, we show that SRS microscopy can serve as an effective,
15 streamlined alternative to traditional histologic methods, eliminating the need to transfer
16 specimens out of the operating room to a pathology laboratory for sectioning, mounting, dyeing,
17 and interpretation. Moreover, because tissue preparation for SRS microscopy is minimal, key
18 tissue architectural details commonly lost in smear preparations and cytologic features often
19 obscured in frozen sections are preserved. We also report a unique method for SRS image
20 processing that simulates hematoxylin and eosin (H&E) staining, called stimulated Raman
21 histology (SRH), which highlights key histoarchitectural features of brain tumors and enables
22 diagnosis in near-perfect agreement with conventional H&E-based techniques. Finally, we
23 demonstrate how a supervised machine learning approach, based on quantified SRH image

1 attributes, effectively differentiates among diagnostic classes of brain tumors. Our study
2 demonstrates that SRH may provide an automated, standardized method for intraoperative
3 histopathology that can be leveraged to improve the surgical care of brain tumors in the future.

4

5 **RESULTS**

6 **Engineering a Clinical SRS Microscope**

7 To eliminate reliance on optical hardware incompatible with the execution of SRS microscopy in
8 an operating room, we created a fully-integrated imaging system with 5 major components: 1) a
9 fiber-coupled microscope with a motorized stage; 2) a dual-wavelength fiber-laser module; 3) a
10 laser control module; 4) a microscope control module; and 5) a computer for image acquisition,
11 display, and processing. The entire system is mounted in a portable, self-contained clinical cart,
12 utilizes a standard wall plug, and does not require water-cooling (Fig. 1A).

13 The dual-wavelength fiber-laser is based on the fact that the difference frequency of the
14 two major fiber gain media, Erbium (Er) and Ytterbium (Yb), overlaps with the high
15 wavenumber region of Raman spectra. As described by Freudiger et al.⁸, the two synchronized
16 narrow-band laser pulse-trains required for SRS imaging are generated by narrow-band filtering
17 of a broad-band super-continuum derived from a single fiber-oscillator and, subsequently,
18 amplification in the respective gain media (Fig. 1B).

19 For clinical implementation, we developed an all-fiber system based on PM components,
20 which greatly improved stability over the previous non-PM system. The system described here
21 was stable throughout transcontinental shipping (from California to Michigan), and continuous,
22 service-free, long-term (>1 year) operation in a clinical environment, without the need for
23 realignment. To enable high-speed diagnostic-quality imaging (1Mpixel in 2sec) with a signal-

1 to-noise ratio comparable to what can be achieved with solid-state lasers, we scaled the laser
2 output power to approximately 120mW for the fixed wavelength 790nm pump beam and
3 approximately 150mW for the tunable Stokes beam over the entire tuning range from 1010nm to
4 1040nm at 40MHz repetition rate and 2ps transform-limited pulse duration. We also developed
5 fully custom laser controller electronics to tightly control the many settings of this multi-stage
6 laser system based on a micro-controller. Once assembled, we determined that the SRS
7 microscope had a lateral resolution of 360nm (full width of half maximum) and axial resolution
8 of 1.8 μ m (Fig. S1).

9 While development of an all-fiber system was necessary for clinical implementation of
10 SRS, relative intensity noise intrinsic to fiber lasers vastly degrades SRS image quality (Fig. 1C).
11 To improve image quality, we developed a noise-cancelation scheme based on auto-balanced
12 detection⁸, in which a portion of the laser beam is sampled to provide a measure of the laser
13 noise that can then be subtracted in real-time. Here we demonstrate that we can achieve ~25x
14 improvement in the signal-to-noise ratio in a clinical setting, without the need for adjustment,
15 which is essential for revealing microscopic tissue architecture (Fig. 1D).

16

17 **Processing of Clinical SRS Images**

18 Histologic images of fresh, unstained surgical specimens are created with the clinical SRS
19 microscope by mapping two Raman shifts: 2845 cm^{-1} , which corresponds to CH_2 bonds that are
20 abundant in lipids (Fig. 2A), and 2930 cm^{-1} , which corresponds to CH_3 bonds that predominate in
21 proteins and DNA (Fig. 2B). Assigning a subtracted CH_3 - CH_2 image (Fig. 2C) to a blue channel
22 and assigning the CH_2 image to the green channel results in an image with contrast that is
23 suitable for brain tumor detection (Fig. 2D)⁹. However, given the ultimate goal of creating an

1 imaging system that produces histologic images that are familiar to clinicians¹⁰⁻¹², we devised
2 SRH, a method of processing SRS images that is reminiscent of H&E staining (Fig. 2E). Unlike
3 previous methods for achieving virtual H&E images through hyperspectral SRS microscopy¹²,
4 SRH relies on only two Raman shifts (2845cm^{-1} and 2930cm^{-1}) to generate the necessary
5 contrast. Though the colors in SRH images do not correspond exactly with the staining of acidic
6 (hematoxylin) or basic (eosin) moieties, there is strong overlap between the two methods (Fig.
7 2F), simplifying interpretation. To produce SRH images, fields-of-view (FOVs) are acquired at a
8 speed of 2 sec per frame in a mosaic pattern, stitched, and recolored. The end result is an SRH
9 mosaic (Fig. 2G) resembling a traditional H&E-stained slide. The time of acquisition for the
10 mosaic shown in Figure 2G is 2.5 min and it can be rapidly transmitted to any networked
11 workstation directly from an operating room.

12

13 **Detection of Diagnostic Histologic Features with SRH**

14 We assessed the ability of SRH to reveal the diagnostic features required to detect and classify
15 tumors of the CNS by imaging fresh surgical specimens from 101 neurosurgical patients (Table
16 S1) via an IRB-approved protocol (UM IRB HUM00083059). Like conventional H&E images,
17 SRH images reveal the cellular and architectural features that permit differentiation of non-
18 lesional (Fig. 3A-C) and lesional (Fig. 3D-I) and tissues. When imaged with SRH, architecturally
19 normal brain tissue from anterior temporal lobectomy patients (patients 6, 11, and 93)
20 demonstrates neurons with angular cell bodies containing lipofuscin granules (Fig. 3A), and
21 lipid-rich axons that appear as white linear structures (Fig. 3A-B). Non-neoplastic reactive
22 changes including gliosis (Fig. 3B) and macrophage infiltration (Fig. 3C) that may complicate
23 intraoperative diagnosis are also readily visualized with SRH. Key differences in cellularity,

1 vascular pattern, and nuclear architecture that distinguish low-grade (Fig. 3D; patient 3) from
2 high-grade (Fig. 3E-F; patient 21) gliomas are apparent as well. Notably, SRH suggests that the
3 perinuclear halos of oligodendrogloma cells (Fig. 3D), not typically seen on frozen section and
4 thought to be an artifact of fixation¹³, are reflective of abundant protein-rich tumor cell
5 cytoplasm. In addition, by highlighting the protein-rich basement membrane of blood vessels,
6 SRH is well-suited for highlighting microvascular proliferation in high-grade glioma (Fig. 3F;
7 patient 37).

8 SRH also reveals the histoarchitectural features that enable diagnosis of tumors of non-
9 glial origin (Fig. 3G-I), including the whorled architecture of meningiomas (Fig. 3G; patient 26),
10 the discohesive monomorphic cells of lymphoma (Fig. 3H; patient 31), and the glandular
11 architecture, large epithelioid cells, and sharp borders of metastatic adenocarcinoma (Fig. 3I;
12 patient 57). SRH is also capable of visualizing morphologic features that are essential in
13 differentiating the three most common pediatric posterior fossa tumors—juvenile pilocytic
14 astrocytoma, medulloblastoma, and ependymoma—each of which have divergent goals for
15 surgical management¹⁴. In pilocytic astrocytomas, SRH detects piloid (hair-like) architecture and
16 Rosenthal fibers, which appear dark on SRH due to their high protein content (Fig. S2A; patient
17 98). SRH also reveals the markedly hypercellular, small, round, blue cell appearance and rosettes
18 in medulloblastoma (Fig. S2B; patient 101), as well as the monomorphic round-to-oval cells
19 forming perivascular pseudorosettes in ependymoma (Fig. S2C; patient 87).

20

21 **Detection of Intratumoral Heterogeneity with SRH**

22 Gliomas often harbor histologic heterogeneity, which complicates diagnosis and treatment
23 selection. Heterogeneity is particularly common in low-grade gliomas suspected of having

1 undergone malignant progression, and demonstration of anaplastic transformation is essential for
2 making a diagnosis. SRH was successful in detecting heterogeneity of tumor grade within a
3 specimen collected from a patient with a recurrent oligodendroglioma of the right frontal cortex.
4 In that specimen, SRH revealed both low-grade architecture and areas of high-grade architecture
5 characterized by hypercellular, anaplastic, and mitotically active tumor (Fig. 4A, patient 41).

6 In other tumors, such as mixed glioneuronal tumors, histologic heterogeneity is a
7 necessary criterion for diagnosis: while any single histopathologic sample may reveal glial or
8 neuronal architecture, the identification of both is necessary for diagnosis. In a patient with
9 suspected ganglioglioma, a glioneuronal tumor, intraoperative SRH images of a superficial
10 specimen (Fig 4B; patient 96) revealed clustered dysplastic neurons, while a deep specimen
11 revealed hypercellular piloid glial architecture. Consequently, by providing a rapid means of
12 imaging multiple specimens, SRH reveals intratumoral heterogeneity needed to establish
13 clinically relevant variations in both grade and histoarchitecture during surgery.

14 15 **Quantitative Evaluation of SRH-Based Diagnosis**

16 Given its ability to reveal diagnostic histologic features, we hypothesized that SRH could
17 provide an alternative to existing methods of intraoperative diagnosis. To test this hypothesis, we
18 imaged specimens from 30 neurosurgical patients where intraoperative diagnosis was rendered
19 using routine frozen sectioning or cytological techniques (Table S1, patients 72-101). Adjacent
20 portions of the same specimens were utilized for both routine histology and SRH.

21 To simulate the practice of intraoperative histologic diagnosis, a computer-based survey
22 was created, in which three board-certified neuropathologists (K.A.M., S.R., M.S.), each
23 practicing at different institutions, were presented with SRH or routine (smear and/or frozen)

1 images, along with a brief clinical history regarding the patient's age group (child/adult), lesion
2 location, and relevant past medical history. The neuropathologists responded with an
3 intraoperative diagnosis for each case the way they would in their own clinical practices.
4 Responses were graded based on: 1) whether tissue was classified as lesional or non-lesional, 2)
5 for lesional tissues, whether they had a glial or non-glial origin, and 3) whether the response
6 contained the same amount of diagnostic information (lesional status, grade, histologic subtype)
7 as the official clinical intraoperative diagnosis.

8 Assessing the pathologists' diagnostic performance when utilizing SRH versus clinical
9 frozen sections revealed near-perfect concordance (Cohen's kappa) between the two histological
10 methods for distinguishing lesional and non-lesional tissues ($\kappa=0.84-1.00$) (Fig. 5A) and for
11 distinguishing lesions of glial origin from non-glial origin ($\kappa=0.93-1.00$) (Fig. 5B). There was
12 also near-perfect concordance between the two modalities in predicting the final diagnosis
13 ($\kappa=0.89-0.92$) (Fig. 5C). Inter-rater reliability among reviewers and concordance between SRH
14 and standard H&E-based techniques for predicting diagnosis was also nearly perfect ($\kappa=0.89-$
15 0.92). Notably, with SRH, the pathologists were highly accurate in distinguishing lesional from
16 non-lesional tissues (98%), glial from non-glial tumors (100%), and predicting diagnosis
17 (92.2%). These findings suggest that pathologists' ability to derive histopathologic diagnoses
18 from SRH images is both accurate and highly concordant with traditional histological methods.

19

20 **Machine Learning-Based Tissue Diagnosis**

21 Intraoperative image data that is most useful for clinical decision-making is that which is rapidly
22 obtained and accurate. Interpretation of histopathologic images by pathologists is labor- and
23 time-intensive and prone to inter-observer variability. Consequently, a system rapidly delivering

1 prompt, consistent, and accurate tissue diagnoses would be greatly helpful during brain tumor
2 surgery. While we have previously shown that tumor infiltration can be predicted by quantitative
3 SRS images through automated analysis of tissue attributes⁶, we hypothesized that more robust
4 computational processing would be required to predict tumor diagnostic class.

5 We employed a machine learning process called a multilayer perceptron (MLP) for
6 diagnostic prediction because it is 1) easy to iterate, 2) easy to verify, and 3) efficient with
7 current computational power. To create the MLP, we incorporated 12,879 400x400 μ m SRH
8 FOVs from our series of 101 patients. We used WND-CHRM, an open-source image
9 classification program that calculates 2,919 image attributes for machine learning¹⁵ to assign
10 quantified attributes to each FOV. Normalized quantified image attributes were fed into the MLP
11 for training, iterating until the difference between the predicted and observed diagnoses was
12 minimized (see Methods section).

13 To test the accuracy of the MLP, we used a leave-one-out approach, wherein the training
14 set contained all FOVs except those from the patient being tested. This method maximizes the
15 size of the training set and eliminates possible correlation between samples in the training and
16 test sets. The MLP makes predictions on an individual FOV level, yielding probabilities that a
17 given FOV belongs to one of the four diagnostic classes: non-lesional, low-grade glial, high-
18 grade glial, or non-glial tumor (including metastases, meningioma, lymphoma, and
19 medulloblastoma) (Fig. 6A). The four diagnostic classes were selected because they provide
20 critical information for informing decision-making during brain tumor surgery.

21 Given the histoarchitectural heterogeneity of CNS tumors and the fact that some
22 specimens may contain a mixture of normal and lesional FOVs, we judged the diagnostic
23 accuracy of the MLP based on the most common or modal-predicted diagnostic class of FOVs

1 within each specimen (Fig. 6B). For example, while the specimen from patient 87 exhibited
2 some features of all diagnostic classes in various SRH FOVs (Fig. 6A), the MLP assigned the
3 low-grade glial category as the highest probability diagnosis in a preponderance of the FOVs
4 (Fig. 6B), resulting in the correct classification of this specimen as a low-grade glial tumor.

5 To evaluate the MLP in a test set of cases read by multiple pathologists, we applied the
6 leave-one-out approach on each of the 30 cases included in the survey described above (Fig. 5).
7 Based on modal diagnosis, the MLP accurately differentiated lesional from non-lesional
8 specimens with 100% accuracy (Fig. 7A). Additionally, the diagnostic capacity of the MLP for
9 classifying individual FOVs as lesional or non-lesional was excellent, with 94.1% specificity and
10 94.5% sensitivity (AUC=0.984 [Fig. S3]). Among lesional specimens, the MLP differentiated
11 glial from non-glial specimens with 90% accuracy at the sample level (Fig. 7B). The modal
12 diagnostic class predicted by the MLP was 90% accurate in predicting the diagnostic class
13 rendered by pathologists in the setting of our survey (Fig. 7C).

14 The cases misclassified by the MLP included a minimally hypercellular specimen with
15 few Rosenthal fibers from a pilocytic astrocytoma (patient 84) classified as non-lesional, rather
16 than low-grade glioma. In this specimen, many of the FOVs resemble normal glial tissue (Fig.
17 S4A). Another misclassified specimen from a patient with leptomeningeal metastatic carcinoma
18 (patient 72) contained only 2 FOVs containing tumor (Fig. S4B). The glioblastoma specimen
19 from patient 82 (Fig. S4C), misclassified as a non-glial tumor by the MLP, contained protein-
20 rich structural elements that resembled the histoarchitecture of metastatic tumors imaged with
21 SRH (Fig. S4D, patient 85). Despite these errors, the accuracy and overall ability of the MLP in
22 automated detection of lesional status and diagnostic category provides proof-of-principle for
23 how the MLP could be used for automated diagnostic predictions.

1 **DISCUSSION**

2 Accurate intraoperative tissue diagnosis is essential during brain tumor surgery. Surgeons and
3 pathologists rely on trusted techniques such as frozen sectioning and smear preparations that are
4 reliable but prone to artifacts that limit interpretation and may delay surgery. A simplified
5 standardized method for intraoperative histology would create the opportunity to use
6 intraoperative histology to ensure more efficient, comprehensive sampling of tissue within and
7 surrounding a tumor. In this manuscript, we report the first demonstration of SRS microscopy in
8 a clinical setting and show how it can be used to rapidly create histologic images from fresh
9 specimens with diagnostic value comparable to conventional techniques.

10 Fluorescence-guided surgery¹⁶, mass spectrometry¹⁷, Raman spectroscopy¹⁸, coherent
11 anti-Stokes Raman scattering microscopy^{19,20}, and optical coherence²¹ tomography, which
12 exploit histologic and biochemical differences between tumor-infiltrated and normal tissues,
13 have been proposed as methods for guiding excision of brain and other types of tumors^{22,23}. To
14 date, however, no microscopic imaging modality tested in a clinical setting has been successful
15 in rapidly creating diagnostic-quality images to inform intraoperative decision-making. Here we
16 show that by leveraging advances in optics and fiber-laser engineering, it is possible to create an
17 SRS microscope that is easy to operate, durable, and compatible with a patient care environment,
18 which rapidly provides diagnostic histopathologic images.

19 SRH is well-suited for integration into the existing workflow for brain tumor surgery. A
20 surgical instrument that can simultaneously collect biopsies for SRH and be tracked by a
21 stereotactic navigational system would enable the linkage of histologic and positional
22 information in a single display, as suggested by Sanai et al.²⁴. Integration of SRH and surgical
23 navigation would create the possibility of verifying that maximal safe cytoreduction has been

1 executed throughout a surgical cavity. In situations where tumor is detected by SRH but cannot
2 be safely removed, it might be possible to serve as a way to better focus the delivery of adjuvant
3 therapies.

4 As medical data become increasingly computer-based, the opportunity to acquire virtual
5 histologic sections via SRS microscopy creates numerous opportunities. For example, in many
6 clinical settings where brain tumor surgery is carried out, neuropathology services are not
7 available. Currently there are 785 board-certified neuropathologists serving the approximately
8 1,400 hospitals performing brain tumor surgery in the United States (Table S2). A networked
9 SRS microscope, like the prototype introduced here, streamlines both sample preparation and
10 imaging and creates the possibility of connecting expert neuropathologists to surgeons—either
11 within the same hospital or in another part of the world—to deliver precise intraoperative
12 diagnosis during surgery.

13 Computer-aided diagnosis may ultimately reduce the inter-reader variability inherent in
14 pathologic diagnosis and might provide guidance in settings where an expert neuropathologist is
15 not available. Our results and the work of others suggest that machine learning algorithms can be
16 used to detect and diagnose brain tumors. Prior work in computer-aided diagnosis in
17 neuropathology has shown promise in differentiating diagnostic entities in formalin-fixed,
18 paraffin-embedded, H&E-stained whole slide images^{25,26}. The ideal computer-aided diagnostic
19 system for intraoperative histology would reliably predict diagnosis in small fresh tissue
20 samples. The classifier reported here is capable of distinguishing lesional from non-lesional
21 tissue samples and in predicting diagnostic class based on pooled tile data. In the future, we
22 anticipate that a machine learning approach will be capable of finer diagnostic classification. We
23 also hypothesize that the accuracy of diagnostic classifiers might also be improved via 1)

1 exploring alternative neural network configurations and systems for convolution; 2) employing
2 feature-based classification; 3) utilizing support vector machines or statistical modeling
3 approaches; and 4) applying rules for data interpretation that account for demographic factors
4 and medical history.

5

6 **OUTLOOK**

7 SRS microscopy can now be utilized to provide rapid intraoperative assessment of tissue
8 architecture in a clinical setting with minimal disruption to the surgical workflow. SRH images
9 may ultimately be used to render diagnosis in brain tumor specimens with a high degree of
10 accuracy and near-perfect concordance with standard intraoperative histologic techniques.

11 Prospective, randomized clinical studies will be necessary to validate these results and define
12 how SRH can be used to expedite clinical decision-making and improve the care of brain tumor
13 patients.

14

15

16 **MATERIALS AND METHODS**

17 **Study Design**

18 The inclusion criteria for this study were as follows: 1) males and females; 2) subjects
19 undergoing brain tumor resection at the University of Michigan Health System (UMHS); 3)
20 subjects (or designee) able to provide informed consent; and 4) subjects in which there was
21 excess tumor tissue beyond what was needed for routine diagnosis. The sample size was
22 estimated at 100 patients to ensure adequate representation of all major tumor types for analysis
23 and based on the design of prior studies comparing SRS and H&E. The central goals of this

1 study were: 1) to build and verify the first clinical SRS microscope; 2) to judge SRH as a means
2 of providing diagnostic histopathologic images; 3) to determine if machine learning could
3 accurately classify SRH images fresh human brain tumor specimens. We began by collecting
4 biopsies (N=125) from neurosurgical patients undergoing tumor resection (n=98) or anterior
5 temporal lobectomy (n=3). Each specimen was imaged immediately after removal with SRS
6 microscopy. A trained neuropathologist (S.C.P) then classified each biopsy based on WHO
7 diagnostic criteria¹³. We then quantified the correlation between SRH and H&E tissue imaging
8 through a survey administered to neuropathologists (S.R., M.S., K.M.). To quantify the SRH
9 images, we utilized WND-CHRM, which assigns 2,919 attributes to each image. We then used
10 the quantified image attributes to build and train an MLP to classify the images based on
11 diagnostic class. Diagnostic predictions were rendered based on the diagnostic class predicted
12 most commonly by the MLP for FOVs in a given specimen.

13

14 **Tissue Collection and Imaging**

15 All tissues were collected in the context of a University of Michigan Medical School IRB-
16 approved protocol from patients who provided informed consent (HUM0000083059). Tissues in
17 excess of what was needed for diagnosis were eligible for imaging. In a subset of patients where
18 the frozen section was large enough to split (patients 72-101), half of the specimen was routed
19 for SRH imaging, while half of the specimen became the tissue for clinical frozen section
20 diagnosis.

21 To image tissue with the clinical SRS microscope, a small (approximately 3mm) portion
22 of fresh tissue was placed on a standard uncoated glass slide in the center of a small piece of
23 two-sided tape (120 μ m thickness) in a manner similar to a standard squash preparation. Normal

1 saline (50 μ L) was applied to the tissue and a coverslip was applied to the tissue and adhered to
2 the slide, creating a chamber for imaging. This slide was then placed on a motorized stage and
3 focused using standard transmission light microscopy. Using custom scripts in μ -Manager
4 software and ImageJ software, two-channel (2845 cm^{-1} and 2930 cm^{-1}) images were obtained in a
5 mosaic fashion.

6 Our prototype system is built on an Olympus microscope body, and we developed a fully
7 custom beam-scanning unit that seamlessly integrates the laser source through fiber delivery. We
8 also developed control electronics for both the laser and the microscope. Our custom imaging
9 software is based on the open-source microscopy platform μ -Manager. The imaging system
10 appears as a “camera,” allowing us to leverage all the automated microscopy features provided
11 by the μ -Manager environment to enable multi-color mosaic imaging.

12

13 **Virtual H&E Coloring**

14 Generating a virtual H&E image from the 2845 cm^{-1} and 2930 cm^{-1} images acquired from the SRS
15 microscope utilizes a simple linear color-mapping of each channel. After channel subtraction and
16 flattening (described in the following section), a linear color remapping is applied to both the
17 2845 cm^{-1} and the 2930 cm^{-1} channel. The 2845 cm^{-1} image, a grayscale image, is linearly mapped
18 such that a strong signal in the 2930 cm^{-1} image maps to an eosin-like reddish-pink color instead
19 of white. A similar linear mapping is applied to the 2930 cm^{-1} image with a hematoxylin-like
20 dark-blue/violet color mapped to a strong signal. Finally, these two layers are linearly added
21 together to result in the final virtual-colored H&E image.

22 The exact colors for the H&E conversion were selected by a linear optimization based on
23 a collection of true H&E-stained slides created by the UMHS Department of Pathology. An

1 initial seed color was chosen at random for both H&E conversions. The previously described
2 linear color-mapping and addition process was completed with these initial seed colors. The
3 ensuing image was hand-segregated into a cytoplasmic and nuclear portion. These portions were
4 compared with the true H&E images and a cytoplasmic and nuclear hue difference between
5 generated false-colored H&E and true H&E was elucidated. The H&E seed colors were modified
6 by these respective hue differences and the process was repeated until the difference between
7 generated and true images was less than 1% different by hue.

8

9 **Image Acquisition and Stitching**

10 The procedure for generating a virtual-colored H&E image from the SRS microscope consists of
11 6 discrete steps:

- 12 1) A mosaic acquisition script is started on the control computer that acquires an (NxN)
13 series of 1024x1024 pixel images from a pre-loaded tissue sample. These images are
14 acquired at the 2845cm⁻¹ and 2930cm⁻¹ Raman shifts and saved as individual two-channel
15 FOVs to a pre-specified folder.
- 16 2) The two-channel image is duplicated and a Gaussian blur is applied to the duplicated
17 image. The original two-channel image is then divided by the Gaussian blur to remove
18 artifacts of acquisition and tissue preparation.
- 19 3) The 2845cm⁻¹ channel is subtracted from the 2930cm⁻¹ channel in each FOV.
- 20 4) New FOVs are created with the 2845cm⁻¹ channel and the 2930cm⁻¹ minus 2845cm⁻¹
21 channel.
- 22 5) The virtual-color H&E script (described in the above section) is run to create an H&E
23 version of the subtracted and flattened tile.

1 6) The original tile is stitched as previously described²⁷. The user is presented with an
2 option to re-stitch with different stitching parameters if the initial stitch produces an
3 unacceptable image. Upon successful stitching, a layout file is generated from the
4 terminal positions of the individual tiles in the stitched image.

5 7) The virtual-color H&E images are stitched using the layout file generated in step #6, a
6 significantly faster process than re-computing the stitching offsets and merges from
7 scratch.

8

9 **Survey Methodology**

10 A computer-based survey consisting of 30 patients was developed and given to blinded
11 neuropathologists (K.A.M, S.R., M.S.), who were presented with standard frozen H&E images
12 and SRH images. All cases included in the survey were judged to have SRH and conventional
13 H&E preparations that contained the essential architectural features required for diagnosis. Each
14 image was accompanied by a short clinical history that included age group, sex, and presenting
15 symptom(s). Survey responses were recorded automatically by the survey software. The
16 intraoperative frozen and final pathologic diagnoses determined by standard clinical protocol
17 employed by the UMHS Department of Pathology were also recorded. The survey responses
18 were scored for accuracy on four levels: 1) for all specimens, whether tissue was lesional vs.
19 non-lesional; 2) for lesional tissues, whether the origin was glial or non-glial; 3) for glial tumors,
20 whether the tumor was low- or high-grade; and 4) for all tumors, the predicted diagnosis.
21 Responses were considered concordant if accuracy scores were equal. The maximum possible
22 score for each case was determined by the clinical frozen section diagnosis. For each case, the

1 following diagnoses were used for statistical analysis: UMHS frozen section diagnosis, survey
2 frozen section diagnosis, survey SRH diagnosis.

3

4 **Statistical Analysis**

5 For each pathologist, we calculated Cohen's kappa²⁸ for SRH vs. H&E for lesion/no lesion and
6 for glioma/no glioma. This provides information on how well SRH and H&E agree.

7 Kappa was also calculated for final diagnosis from SRH vs. truth (clinical frozen section
8 diagnosis) and for H&E vs. truth (clinical frozen section diagnosis), where final diagnosis was
9 one of eleven categories, which tells us how well each pathologist was able to detect the truth
10 from either SRH or H&E. Lastly, we calculated the three-reader inter-rater reliability (Fleiss'
11 kappa²⁹) for SRH lesion/no lesion, SRH glioma/no glioma, H&E lesion/no lesion, and for H&E
12 glioma/no glioma. R software was used for all statistical analyses.

13 No distributional assumptions are necessary for the kappa statistic. The only assumption is that
14 the data are categorical and that SRH and H&E are measured on the same data, which they are.
15 There is no estimate of variance for groups.

16

17 **Generation of the MLP**

18 The MLP was programmed with two software libraries: Theano and Keras. Theano
19 (<http://deeplearning.net/software/theano/index.html>) is a high-performance low-level
20 mathematical expression evaluator used to train the MLP. Keras (<http://keras.io>) is a high-level
21 Python framework that serves as a wrapper for Theano, allowing rapid iteration and testing of
22 different MLP configurations.

1 The MLP is designed as a fully-connected, 1,024-unit, 1 hidden layer, neural network. It
2 comprises 8 sequential layers in the following order: 1) dense input layer with uniform
3 initialization; 2) hyperbolic tangent activation layer; 3) dropout layer with dropout probability
4 0.2; 4) dense hidden layer with uniform initialization; 5) hyperbolic tangent activation layer; 6)
5 dropout layer with dropout probability 0.2; 7) dense output layer with uniform initialization; and
6 8) a softmax activation layer corresponding to the number of classifications (Fig. S5).

7 Training of the MLP was performed using a training set that was exclusive from the
8 survey test set. Loss was calculated using the multiclass log-loss strategy. The selected optimizer
9 was the “Adam” optimizer. The optimizer’s parameters were as follows: learning rate= 0.001,
10 beta_1=0.9, beta_2=0.999, and epsilon= 1×10^{-8} .

11

12 **Image Processing and Analysis by the MLP**

13 The process to convert a raw SRH image to a probability vector for each of the diagnoses is as
14 follows:

- 15 1) Use FIJI to subtract the CH2 layer from the CH3 layer and flatten the image as described
16 in the subsection “Tissue Collection and Imaging.”
- 17 2) Use FIJI to split the two-channel image into a separate CH2 layer and a CH3-CH2 layer.
- 18 3) For each of the previous tiles, create 4 duplications of the tile with 90-degree rotations
19 (“rotamers”).
- 20 4) Use WNDCHRM (<http://scfbm.biomedcentral.com/articles/10.1186/1751-0473-3-13>) to
21 generate signature files for each of the tiles from the previous step.
- 22 5) Normalize the signature files such that all of the feature values are uniformly and linearly
23 mapped to the range (-1.0, 1.0).

- 1 6) (CH2). For each of the tiles that correspond to CH2-channel tiles, run the MLP as
- 2 described above.
- 3 7) (CH2). Gather all of the rotamers for a given tile and average (arithmetic mean) the
- 4 prediction values from them to create one consolidated diagnosis-probability vector for a
- 5 given CH2-channel tile.
- 6 8) Repeat steps 6-7 for the CH3-CH2 channel.
- 7 9) For a given tile, compare the CH2-channel and the CH3-CH2 channel and discard the
- 8 diagnosis-probability vector for the tile that has a lower maximal probability value.
- 9 10) For a case-by-case diagnosis, group all of the tiles for a case, remove any tile that doesn't
- 10 have a diagnosis probability of >0.25 , and diagnose the case with the most prevalent
- 11 (mode) diagnosis among the set of tiles.

12

13 **MLP Evaluation with the Leave-One-Out Approach**

14 To test the diagnostic accuracy of the MLP, we used a leave-one-out approach for the 30 patients
15 that were used in the survey administered to neuropathologists. For each of the 30 patients used
16 to evaluate the MLP, all FOVs (n) from that patient were placed in the test set. The training set
17 was composed of the 12,879-n remaining FOVs. The 12,879 FOVs were screened by a
18 neuropathologist to ensure they were representative of the diagnosis they were assigned to. FOVs
19 were classified as non-lesional, pilocytic astrocytoma, ependymoma, oligodendroglioma, low-
20 grade diffuse astrocytoma, anaplastic oligodendroglioma, anaplastic astrocytoma, glioblastoma,
21 meningioma, lymphoma, metastatic tumor, and medulloblastoma.

22 The MLP was trained for 25 iterations, with the following 26 iteration weights recorded
23 to use for validation of the test set. The test set was fed into each of these 26 weights with the

1 resulting probabilities of each of the 12 diagnostic classes averaged to create a final probability
2 for each diagnosis for each FOV. The 12 diagnoses were condensed to four classes (non-lesional,
3 low-grade glial, high-grade glial, and non-glial) to achieve diagnostic predictions. The low-grade
4 glial category included FOVs classified as pilocytic astrocytoma, ependymoma,
5 oligodendroglioma, and low-grade diffuse astrocytoma. The high-grade glial category included
6 FOVs classified as anaplastic oligodendroglioma, anaplastic astrocytoma, and glioblastoma. The
7 non-glial category included FOVs classified as meningioma, lymphoma, metastatic tumor, and
8 medulloblastoma.

9

10 **Nationwide Inpatient Sample Query**

11 The Nationwide Inpatient Sample (NIS) database, obtained from the Healthcare Cost and
12 Utilization Project of the Agency for Healthcare Research and Quality, was queried for years
13 2010 and 2011. The NIS for these years contains discharge data for all discharges from a sample
14 of hospitals representing 20% of all nationwide discharges from nonfederal hospitals using a
15 stratified random sampling technique.

16 Brain tumor resections or biopsies were identified using combinations of International
17 Classification of Diseases, 9th revision, Clinical Modification (ICD-9-CM) diagnosis and
18 treatment codes that were previously used for studies of adult tumors³⁰, pediatric tumors³¹, and
19 pituitary tumors³². Primary tumor ICD-9 diagnosis and procedure code codes used include 191.0-
20 191.9, 225.0, 237.5, and 01.53, 01.59, 01.13, 01.14, respectively. Meningioma ICD-9 diagnosis
21 and procedure codes used include 225.2, 192.1, 237.6, and 01.51, 01.13, and 01.14, respectively.
22 Diagnosis code 198.3 and procedure codes 01.53, 01.59, 01.13, and 01.14 were used for
23 metastases. Diagnosis code 225.1 and procedure code 04.01 was used for vestibular

1 schwannomas. Diagnosis code 227.3 and procedure codes 07.62 and 07.65 were used for
2 pituitary tumors.

3

4 **Code Availability**

5 To access code utilized in generation of data in this study, please contact corresponding author
6 (DO).

7

8 **“NOT FOR CLINICAL USE” STATEMENT**

9 The SRS microscopy system described in this publication is a prototype system that is intended
10 for research use only. It does not comply with international safety standards nor has it received
11 approval or clearance from any government agency such as the U.S. Food and Drug
12 Administration (FDA). Validation has been demonstrated on *ex vivo* tissue specimens as
13 approved by University of Michigan IRB protocol (HUM00083059).

14

1 REFERENCES

- 2
- 3 1 Eisenhardt, L. & Cushing, H. Diagnosis of Intracranial Tumors by Supravital
4 Technique. *Am J Pathol* **6**, 541-552 547 (1930).
- 5 2 Somerset, H. L. & Kleinschmidt-DeMasters, B. K. Approach to the intraoperative
6 consultation for neurosurgical specimens. *Advances in anatomic pathology* **18**, 446-
7 449, doi:10.1097/PAP.0b013e3182169934 (2011).
- 8 3 Sanai, N., Polley, M.-Y., McDermott, M. W., Parsa, A. T. & Berger, M. S. An extent of
9 resection threshold for newly diagnosed glioblastomas. *Journal of neurosurgery* **115**,
10 3-8, doi:10.3171/2011.2.JNS10998 (2011).
- 11 4 Freudiger, C. W. *et al.* Label-free biomedical imaging with high sensitivity by
12 stimulated Raman scattering microscopy. *Science* **322**, 1857-1861,
13 doi:322/5909/1857 [pii]
14 10.1126/science.1165758 (2008).
- 15 5 Lu, F. K. *et al.* Label-Free Neurosurgical Pathology with Stimulated Raman Imaging.
16 *Cancer Res*, doi:10.1158/0008-5472.CAN-16-0270 (2016).
- 17 6 Ji, M. *et al.* Detection of human brain tumor infiltration with quantitative stimulated
18 Raman scattering microscopy. *Sci Transl Med* **7**, 309ra163,
19 doi:10.1126/scitranslmed.aab0195 (2015).
- 20 7 Ji, M. *et al.* Rapid, label-free detection of brain tumors with stimulated Raman
21 scattering microscopy. *Sci Transl Med* **5**, 201ra119,
22 doi:10.1126/scitranslmed.3005954 (2013).
- 23 8 Freudiger, C. W. *et al.* Stimulated Raman Scattering Microscopy with a Robust Fibre
24 Laser Source. *Nat Photonics* **8**, 153-159, doi:10.1038/nphoton.2013.360 (2014).
- 25 9 Freudiger, C. W. *et al.* Multicolored stain-free histopathology with coherent Raman
26 imaging. *Lab Invest*, doi:10.1038/labinvest.2012.109 (2012).
- 27 10 Bini, J. *et al.* Confocal mosaicing microscopy of human skin ex vivo: spectral analysis
28 for digital staining to simulate histology-like appearance. *Journal of biomedical*
29 *optics* **16**, 076008, doi:10.1117/1.3596742 (2011).
- 30 11 Dobbs, J. *et al.* Confocal fluorescence microscopy for rapid evaluation of invasive
31 tumor cellularity of inflammatory breast carcinoma core needle biopsies. *Breast*
32 *cancer research and treatment* **149**, 303-310, doi:10.1007/s10549-014-3182-5
33 (2015).
- 34 12 Ozeki, Y. *et al.* High-speed molecular spectral imaging of tissue with stimulated
35 Raman scattering. *Nat Photon* **6**, 845-851,
36 doi:<http://www.nature.com/nphoton/journal/v6/n12/abs/nphoton.2012.263.html>
37 [-supplementary-information](http://www.nature.com/nphoton/journal/v6/n12/abs/nphoton.2012.263.html) (2012).
- 38 13 *World Health Organization Classification of Tumours : WHO Classification of Tumours*
39 *of the Central Nervous System (4th Edition)*. (World Health Organization (WHO),
40 2007).
- 41 14 Thompson, E. M. *et al.* Prognostic value of medulloblastoma extent of resection after
42 accounting for molecular subgroup: a retrospective integrated clinical and
43 molecular analysis. *Lancet Oncol*, doi:10.1016/S1470-2045(15)00581-1 (2016).

1 15 Orlov, N. *et al.* WND-CHARM: Multi-purpose image classification using compound
2 image transforms. *Pattern recognition letters* **29**, 1684-1693 (2008).

3 16 Stummer, W. *et al.* Fluorescence-guided surgery with 5-aminolevulinic acid for
4 resection of malignant glioma: a randomised controlled multicentre phase III trial.
5 *The Lancet Oncology* **7**, 392-401, doi:10.1016/S1470-2045(06)70665-9 (2006).

6 17 Eberlin, L. S. *et al.* Classifying human brain tumors by lipid imaging with mass
7 spectrometry. *Cancer Research* **72**, 645-654, doi:10.1158/0008-5472.CAN-11-2465
8 (2012).

9 18 Jermyn, M. *et al.* Intraoperative brain cancer detection with Raman spectroscopy in
10 humans. *Sci Transl Med* **7**, 274ra219, doi:10.1126/scitranslmed.aaa2384 (2015).

11 19 Camp, C. H., Jr. *et al.* High-Speed Coherent Raman Fingerprint Imaging of Biological
12 Tissues. *Nat Photonics* **8**, 627-634, doi:10.1038/nphoton.2014.145 (2014).

13 20 Evans, C. L. *et al.* Chemically-selective imaging of brain structures with CARS
14 microscopy. *Opt Express* **15**, 12076-12087 (2007).

15 21 Kut, C. *et al.* Detection of human brain cancer infiltration ex vivo and in vivo using
16 quantitative optical coherence tomography. *Sci Transl Med* **7**, 292ra100,
17 doi:10.1126/scitranslmed.3010611 (2015).

18 22 Yang, Y. *et al.* Differential diagnosis of breast cancer using quantitative, label-free
19 and molecular vibrational imaging. *Biomedical optics express* **2**, 2160-2174,
20 doi:10.1364/BOE.2.002160 (2011).

21 23 Gao, L. *et al.* Differential diagnosis of lung carcinoma with coherent anti-Stokes
22 Raman scattering imaging. *Archives of pathology & laboratory medicine* **136**, 1502-
23 1510, doi:10.5858/arpa.2012-0238-SA (2012).

24 24 Sanai, N. *et al.* Intraoperative Confocal Microscopy for Brain Tumors: A Feasibility
25 Analysis in Humans. *Neurosurgery* **68**, ons282-ons290,
26 doi:10.1227/NEU.0b013e318212464e (2011).

27 25 Barker, J., Hoogi, A., Depeursinge, A. & Rubin, D. L. Automated classification of brain
28 tumor type in whole-slide digital pathology images using local representative tiles.
29 *Med Image Anal* **30**, 60-71, doi:10.1016/j.media.2015.12.002 (2016).

30 26 Mousavi, H. S., Monga, V., Rao, G. & Rao, A. U. Automated discrimination of lower and
31 higher grade gliomas based on histopathological image analysis. *Journal of*
32 *pathology informatics* **6**, 15, doi:10.4103/2153-3539.153914 (2015).

33 27 Preibisch, S., Saalfeld, S. & Tomancak, P. Globally optimal stitching of tiled 3D
34 microscopic image acquisitions. *Bioinformatics* **25**, 1463-1465,
35 doi:10.1093/bioinformatics/btp184 (2009).

36 28 Cohen, J. A Coefficient of Agreement for Nominal Scales. *Educational and*
37 *Psychological Measurement* **20**, 37-46 (1960).

38 29 Fleiss, J. & J, C. The equivalence of weighted kappa and the intraclass correlation
39 coefficient as measures of reliability. *Educational and Psychological Measurement*
40 **33**, 613-619 (1973).

41 30 Curry, W. T., Jr., Carter, B. S. & Barker, F. G., 2nd. Racial, ethnic, and socioeconomic
42 disparities in patient outcomes after craniotomy for tumor in adult patients in the
43 United States, 1988-2004. *Neurosurgery* **66**, 427-437; discussion 437-428,
44 doi:10.1227/01.NEU.0000365265.10141.8E (2010).

1 31 Smith, E. R., Butler, W. E. & Barker, F. G., 2nd. Is there a "July phenomenon" in
2 pediatric neurosurgery at teaching hospitals? *J Neurosurg* **105**, 169-176,
3 doi:10.3171/ped.2006.105.3.169 (2006).
4 32 Brinjikji, W., Lanzino, G. & Cloft, H. J. Cerebrovascular complications and utilization
5 of endovascular techniques following transsphenoidal resection of pituitary
6 adenomas: a study of the Nationwide Inpatient Sample 2001-2010. *Pituitary* **17**,
7 430-435, doi:10.1007/s11102-013-0521-1 (2014).
8
9
10
11

1 **ACKNOWLEDGMENTS**

2 The authors would like to thank H. Wagner for manuscript editing.

3

4 **AUTHOR CONTRIBUTIONS**

5 D.A.O., B.P., Y.S.N., C.W.F., J.K.T., T.C.H., and S.C.P. conceived the study, designed the
6 experiments, and wrote the paper, and were assisted by M.G. X.S.X. provided guidance on study
7 design. D.A.O., S.L., and M.G. performed SRH imaging of all specimens. C.W.F. and J.K.T.
8 built the SRS microscope. B.P., Y.S.N., J.B., and T.D.J. analyzed the data. S.C.P., K.A.M.,
9 S.H.R., M.S., S.V., A.P.L., and A. F.-H. interpreted microscopic images and revised the
10 manuscript. T.D.J., D.A.W., and Y.S.N. performed statistical analyses. D.A.O, S.H.J, H.J.L.G.,
11 J.A.H., C.O.M., and O.S. provided surgical specimens for imaging. All authors reviewed and
12 edited the manuscript.

13

14 **COMPETING FINANCIAL INTERESTS**

15 X.S.X. and D.A.O. are advisors and shareholders of Invenio Imaging, Inc., a company
16 developing SRS microscopy systems. C.W.F. is an employee and shareholder of Invenio
17 Imaging, Inc.

18

19 **FUNDING**

20 Research reported in this publication was supported by the National Institute of Biomedical
21 Imaging and Bioengineering (R01EB017254 to X.S.X. and D.A.O.), National Institute of
22 Neurologic Disorders and Stroke (K08NS087118 to S.H.R.), the NIH Director’s Transformative
23 Research Award Program T-R01 of the National Institutes of Health (R01EB010244-01 to

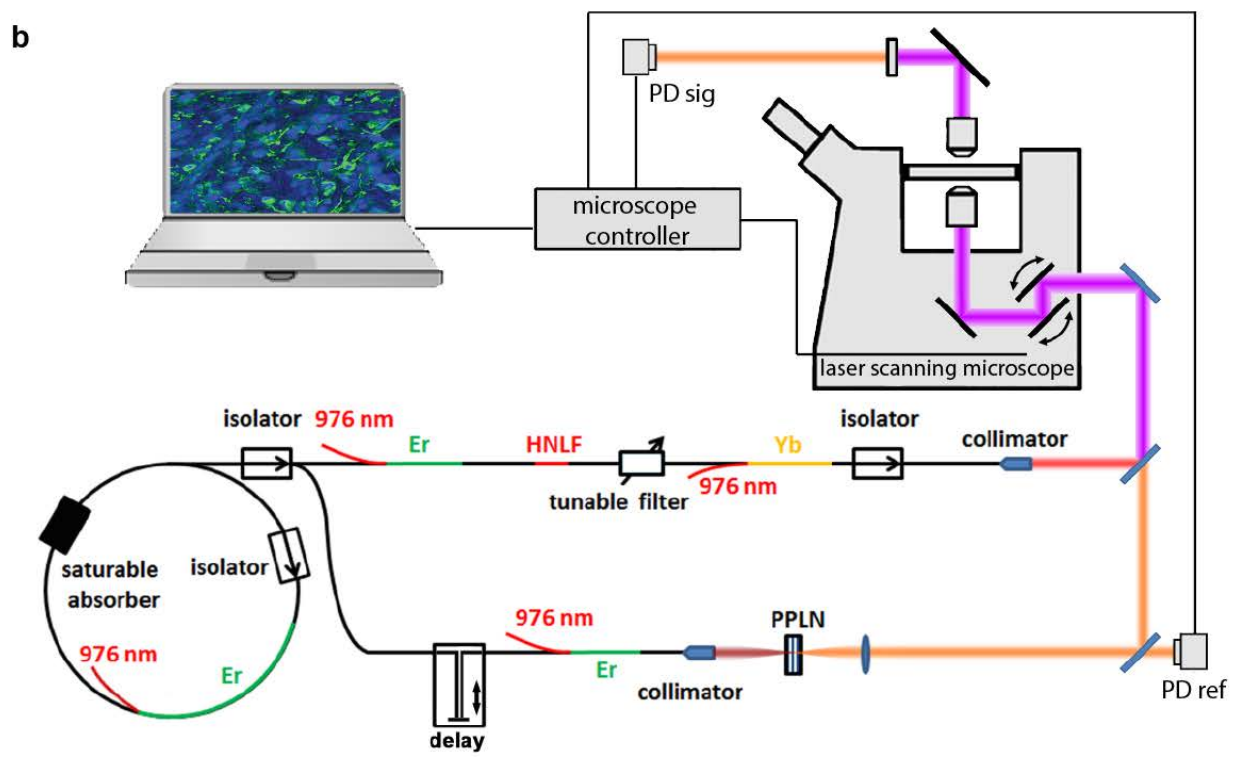
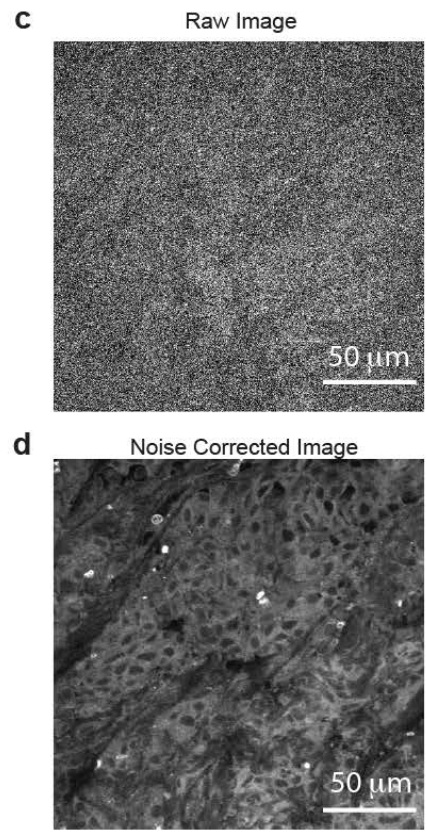
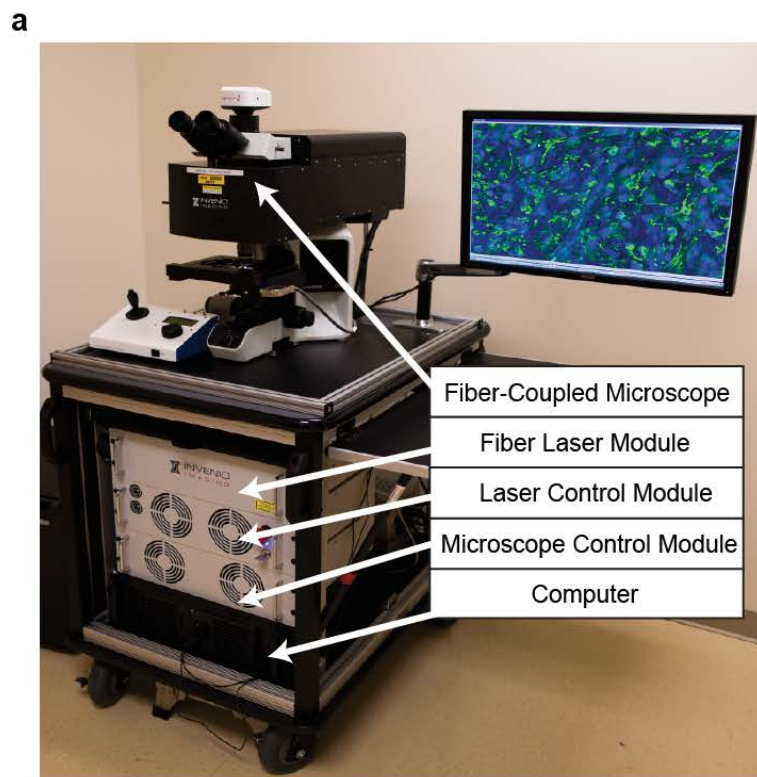
1 X.S.X.), and the National Cancer Institute of the National Institutes of Health (P30CA046592
2 Cancer Center Histology Core). This work was also supported by Fast Forward Medical
3 Innovation, the U-M Michigan Translational Research and Commercialization for Life Sciences
4 Program (U-M MTRAC), and the Michigan Institute for Clinical and Health Research
5 (2UL1TR000433 to D.A.O.).

6

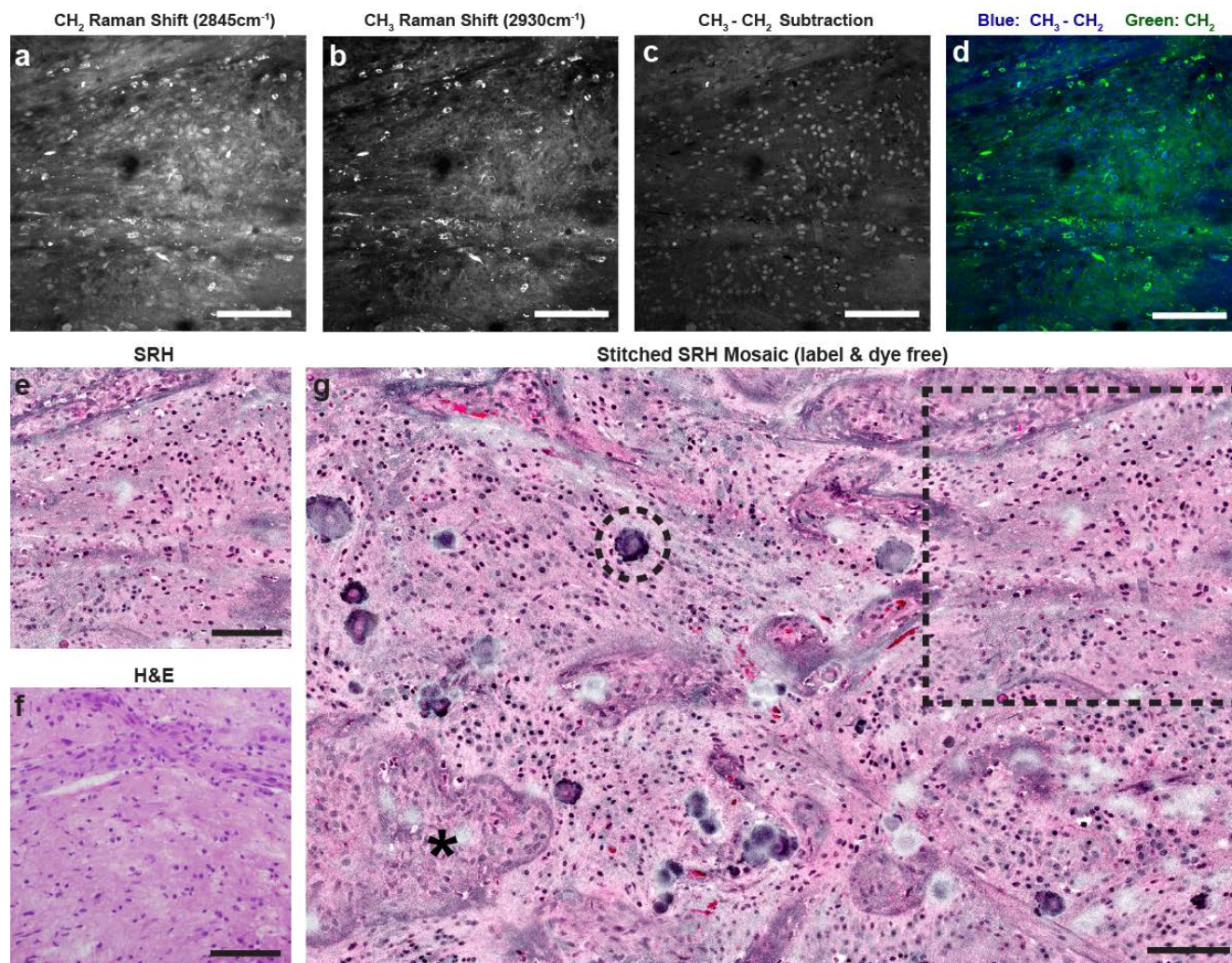
7 **MATERIALS AND DATA AVAILABILITY**

8 A University of Michigan IRB protocol (HUM00083059) was approved for the use of human
9 brain tumor specimens in this study. To obtain these samples, SRH images, or related computer
10 code contact D.A.O.

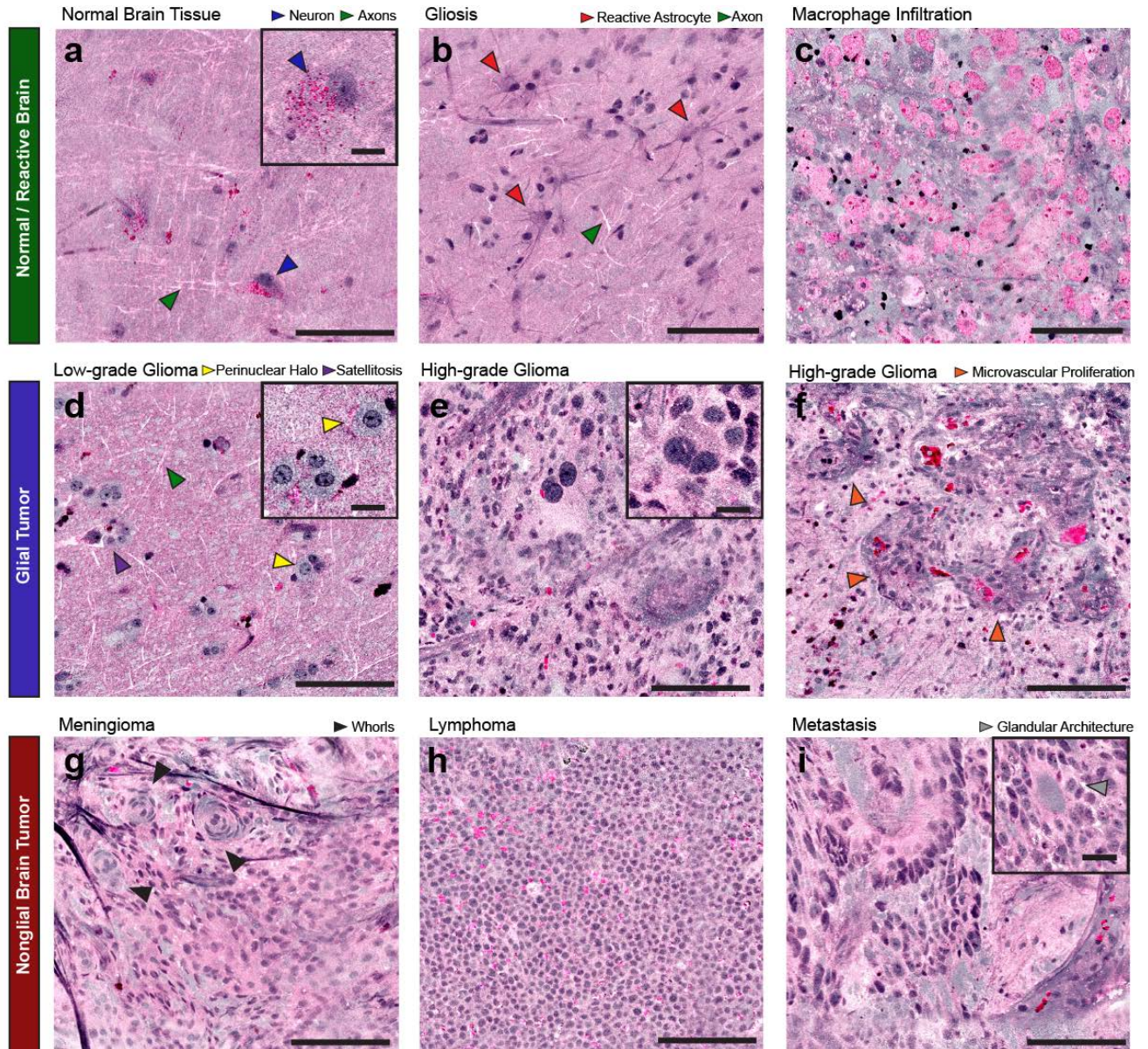
1 FIGURES



1 **Fig. 1. Engineering a clinical SRS microscope.** (A) SRS microscope in the UMHS operating
2 room. (B) Key components of the dual-wavelength fiber-laser-coupled microscope required to
3 create a portable, clinically compatible SRS imaging system. The top arm of the laser diagram
4 indicates the scheme for generating the Stokes beam (red), while the bottom arm generates the
5 pump beam (orange). Both beams are combined (purple) and passed through the specimen. (C)
6 Raw 2845cm^{-1} image of human tissue before, and (D) after balanced-detection-based noise
7 cancellation. HNLF = highly non-linear fiber; PPLN = periodically poled lithium niobate; PD =
8 photo diode.



1
2
3 **Fig. 2. Creating virtual H&E slides with the clinical SRS microscope.** (A) CH₂ and (B) CH₃
4 images are acquired and (C) subtracted. (D) The CH₂ image is assigned to the green channel,
5 and CH₃-CH₂ image is assigned to the blue channel to create a two-color blue-green image.
6 Applying an H&E lookup table, SRH images (E) are comparable to a similar section of tumor
7 (F) imaged after formalin-fixation, paraffin-embedding (FFPE), and H&E staining. (G) Mosaic
8 tiled image of several SRH FOVs to create a mosaic of imaged tissue. Asterisk (*) indicates a
9 focus of microvascular proliferation, dashed circle indicates calcification, and the dashed box
10 demonstrates how the FOV in (E) fits into the larger mosaic. Scale bars = 100 μ m.



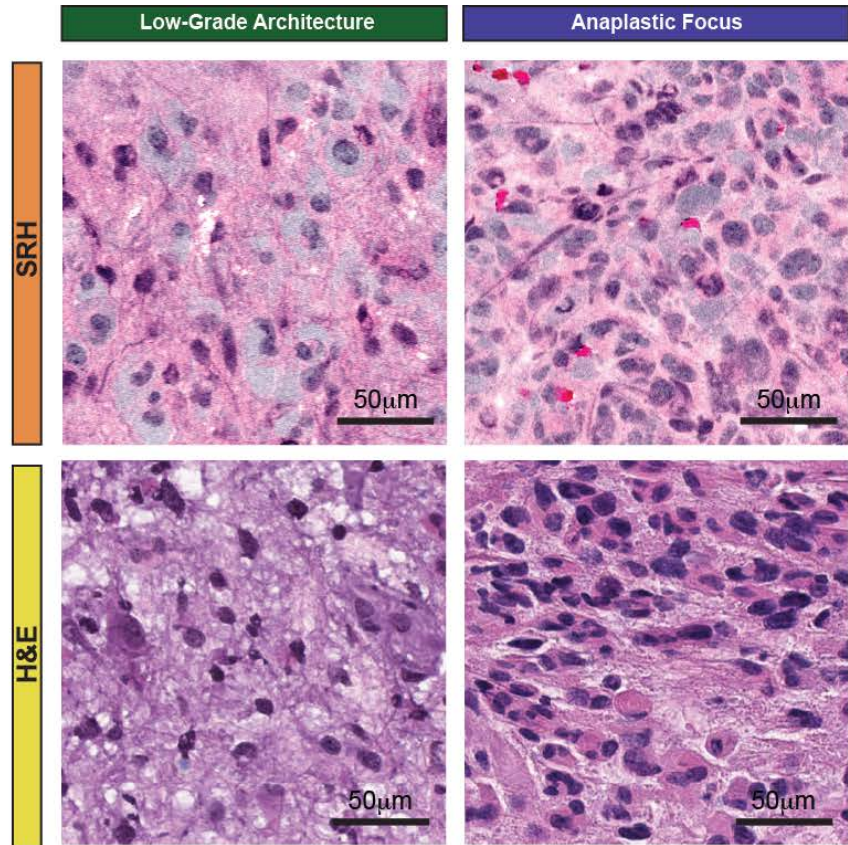
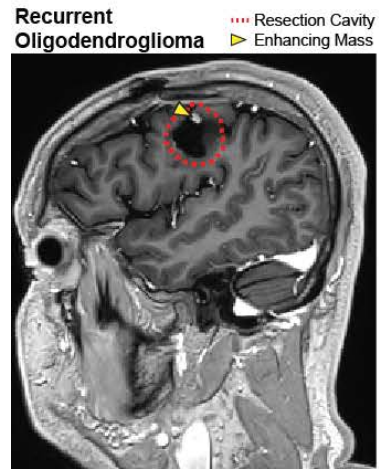
2

3 **Fig. 3. Imaging of key diagnostic histoarchitectural features with SRH.** (A) Normal cortex
 4 reveals scattered pyramidal neurons (blue arrowheads) with angulated boundaries and lipofuscin
 5 granules, which appear red. White linear structures are axons (green arrowheads). (B) Gliotic
 6 tissue contains reactive astrocytes with radially directed fine protein-rich processes (red
 7 arrowheads) and axons (green arrowheads). (C) A macrophage infiltrate near the edge of a
 8 glioblastoma reveals round, swollen cells with lipid-rich phagosomes. (D) SRH reveals scattered

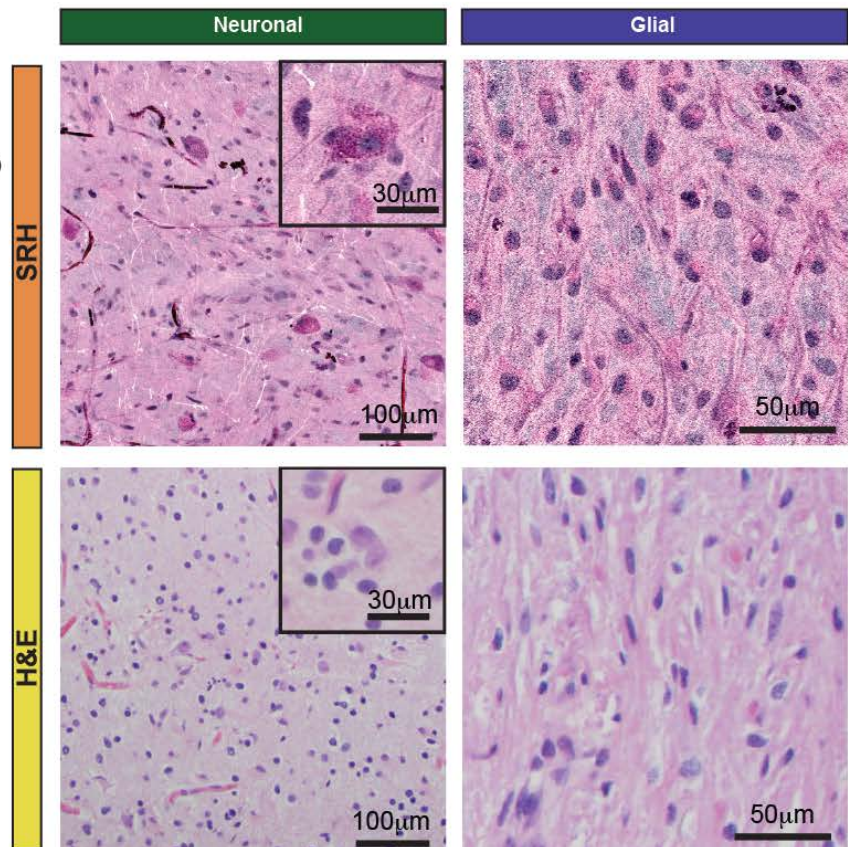
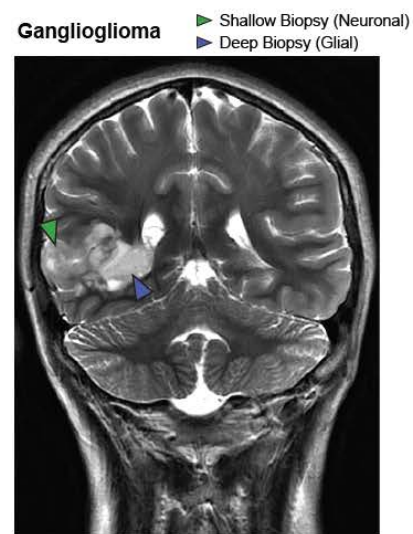
1 “fried-egg” tumor cells with round nuclei, ample cytoplasm, perinuclear halos (yellow
2 arrowheads), and neuronal satellitosis (purple arrowhead) in a diffuse 1p19q-co-deleted low-
3 grade oligodendroglioma. Axons (green arrowhead) are apparent in this tumor-infiltrated cortex
4 as well. (E) SRH demonstrates hypercellularity, anaplasia, and cellular and nuclear
5 pleomorphism in a glioblastoma. A large binucleated tumor cell is shown (inset) in contrast to
6 smaller adjacent tumor cells. (F) SRH of another glioblastoma reveals microvascular
7 proliferation (orange arrowheads) with protein-rich basement membranes of angiogenic
8 vasculature appearing purple. SRH reveals (G) the whorled architecture of meningioma (black
9 arrowheads), (H) monomorphic cells of lymphoma with high nuclear:cytoplasmic ratio, and (I)
10 the glandular architecture (inset; gray arrowhead) of a metastatic colorectal adenocarcinoma.
11 Large image scale bars = 100µm; inset image scale bars =20µm.

12
13
14
15
16
17
18
19

a



b



1 **Fig. 4. SRH reveals structural heterogeneity in human brain tumors.** (A) A patient with a
2 history of low-grade oligodendroglioma was followed for an enlarging enhancing mass (yellow
3 arrowhead) in the previous resection cavity (red circle). SRH imaging of the resected tissue
4 reveals areas with low-grade oligodendroglioma architecture in some regions (top) with foci of
5 anaplasia (bottom) in other areas of the same specimen. FFPE H&E images are shown for
6 comparison. (B) Gangliogliomas are typically composed of neuronal and glial components. SRH
7 reveals architectural differences between a shallow tissue biopsy (green arrowhead) where
8 disorganized binucleated dysplastic neurons predominate (top), and a deeper biopsy (blue
9 arrowhead) where architecture is more consistent with a hypercellular glioma (bottom). FFPE
10 H&E images are shown for comparison.

a

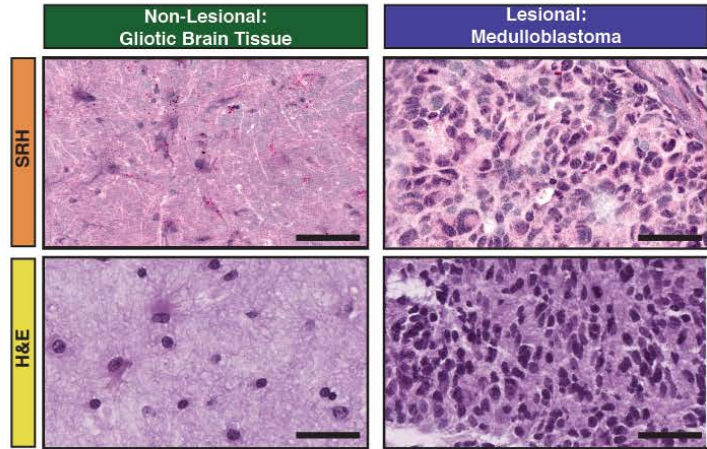
Differentiating Non-lesional and Lesional Specimens

Survey Results

Specimen Type	Imaging Modality	NP1		NP2		NP3		Combined Accuracy
		✓	✗	✓	✗	✓	✗	
Normal	SRH	4	1	5	0	5	0	93%
	H&E	3	2	5	0	5	0	86%
Glial Tumor	SRH	15	0	15	0	15	0	100%
	H&E	15	0	15	0	15	0	100%
Non-Glial Tumor	SRH	10	0	10	0	10	0	100%
	H&E	10	0	10	0	10	0	100%
Total	SRH	29	1	30	0	30	0	98%
	H&E	28	2	30	0	30	0	97.7%
Combined Accuracy		90%		100%		100%		95%
Concordance (K)		0.84		1		1		

✓ = Correct ✗ = Incorrect NP = Neuropathologist

Representative Survey Cases



b

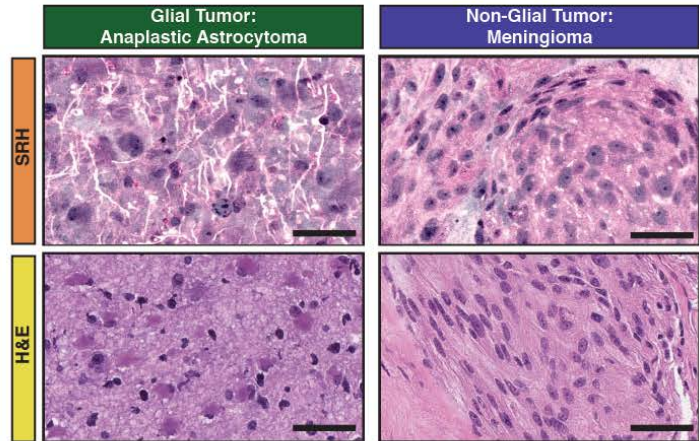
Differentiating Glial and Non-glial Tumors:

Survey Results

Specimen Type	Imaging Modality	NP1		NP2		NP3		Combined Accuracy
		✓	✗	✓	✗	✓	✗	
Glial Tumor	SRH	15	0	15	0	15	0	100%
	H&E	15	0	15	0	15	0	100%
Non-Glial Tumor	SRH	10	0	10	0	10	0	100%
	H&E	10	0	10	0	10	0	100%
Total	SRH	25	0	25	0	25	0	100%
	H&E	25	0	25	0	25	0	100%
Combined Accuracy		100%		100%		100%		100%
Concordance (K)		1		1		1		

✓ = Correct ✗ = Incorrect NP = Neuropathologist

Representative Survey Cases



c

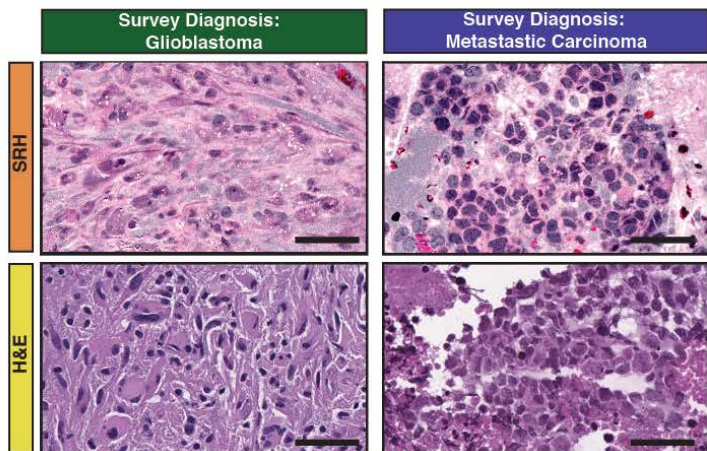
Differentiating Diagnostic Subtypes

Survey Results

Specimen Type	Imaging Modality	NP1		NP2		NP3		Combined Accuracy
		✓	✗	✓	✗	✓	✗	
Normal	SRH	4	1	5	0	5	0	93%
	H&E	3	2	5	0	5	0	86%
Glial Tumor	SRH	14	1	12	3	13	2	86.6%
	H&E	14	1	14	1	15	0	95.5%
Non-Glial Tumor	SRH	10	0	10	0	10	0	100%
	H&E	10	0	9	1	10	0	96.6%
Total	SRH	28	2	27	3	28	2	92.2%
	H&E	27	3	28	2	30	0	94.4%
Combined Accuracy		91.6%		91.6%		96.6%		94.4%
Concordance (K)		0.924		0.855		0.923		

✓ = Correct ✗ = Incorrect NP = Neuropathologist

Representative Survey Cases



1

2

1 **Fig. 5. Simulation of intraoperative histologic diagnosis with SRH.** A web-based survey
2 consisting of specimens from 30 patients (patients 72-101) imaged with both SRH and
3 conventional H&E methods was administered to three neuropathologists. Neuropathologists
4 recorded free-form responses as they would during a clinical intraoperative histologic consult.
5 Responses were graded based on whether tissue was judged as (A) lesional or non-lesional, (B)
6 glial or non-glial, and (C) on the accuracy of diagnosis. SRH and H&E preparations for six
7 examples of portions of specimens presented in the survey are shown: gliotic brain tissue (patient
8 91), medulloblastoma (patient 101), anaplastic astrocytoma (patient 76), meningioma (patient
9 95), glioblastoma (patient 82), and metastatic carcinoma (patient 74). Scale bars = 50 μ m.

1 non-glial). Representative FOVs include a FOV with a small number of ovoid tumor cells
2 (arrowhead) classified as low-grade glioma (top left, orange outline), a FOV with high cellularity
3 with frequent hyalinized blood vessels (arrowheads) classified as non-glial tumor (top right,
4 green outline), a FOV with moderate cellularity and abundant piloid processes (bottom right,
5 yellow outline) classified as a low-grade glioma, and a FOV with higher cellularity and several
6 prominent vessels (arrowheads) classified as high-grade glial tumor (bottom left, blue outline).
7 Scale bars are 100 μ m for the individual FOVs and 500 μ m for the mosaic image. **(B)** Probability
8 heatmaps overlaid on the SRH mosaic image indicate the MLP-determined probability of class
9 membership for each FOV across the mosaic image for the four diagnostic categories. Colored
10 boxes correspond to the FOVs highlighted in **A**.

11

12

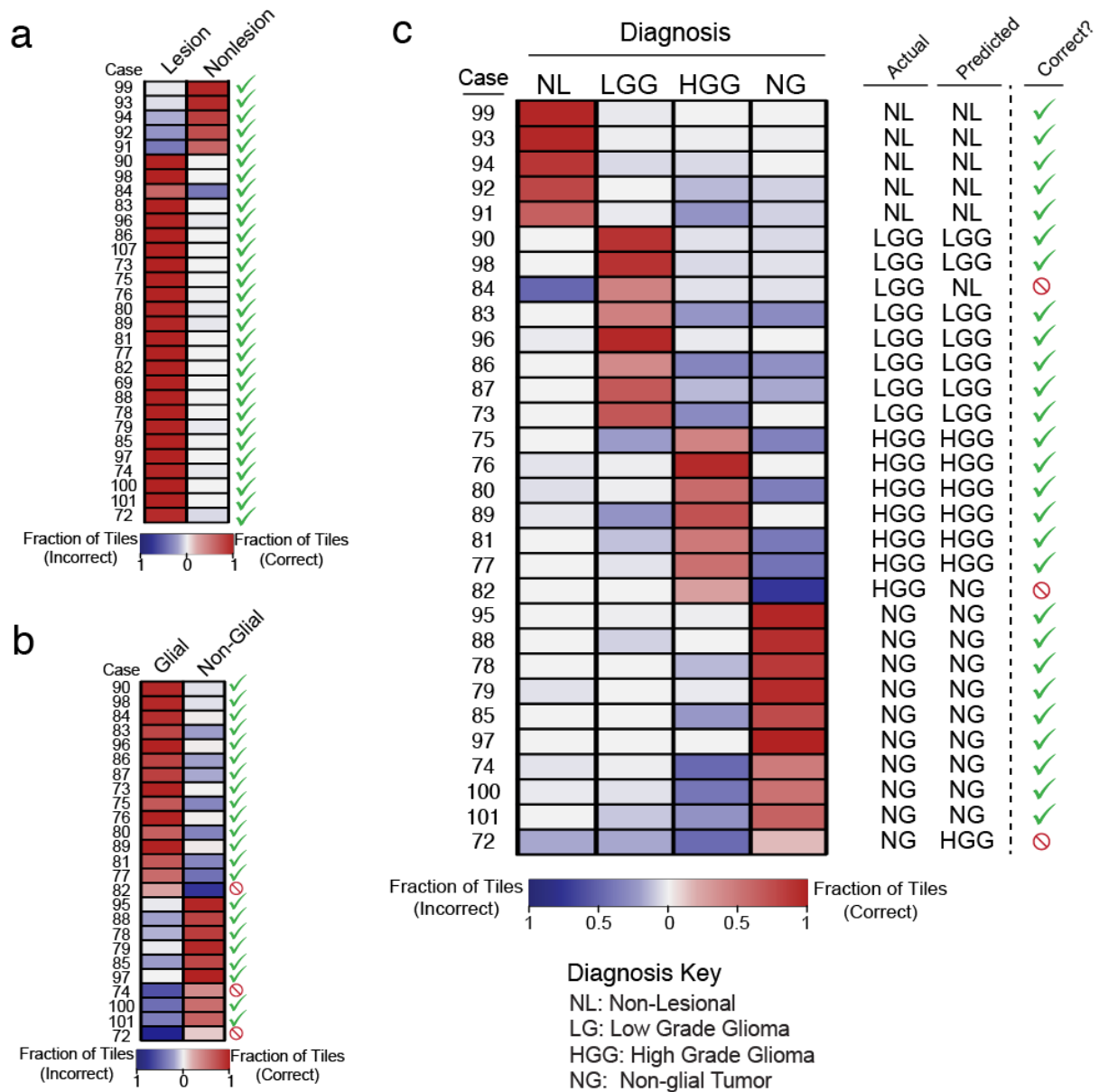
13

14

15

16

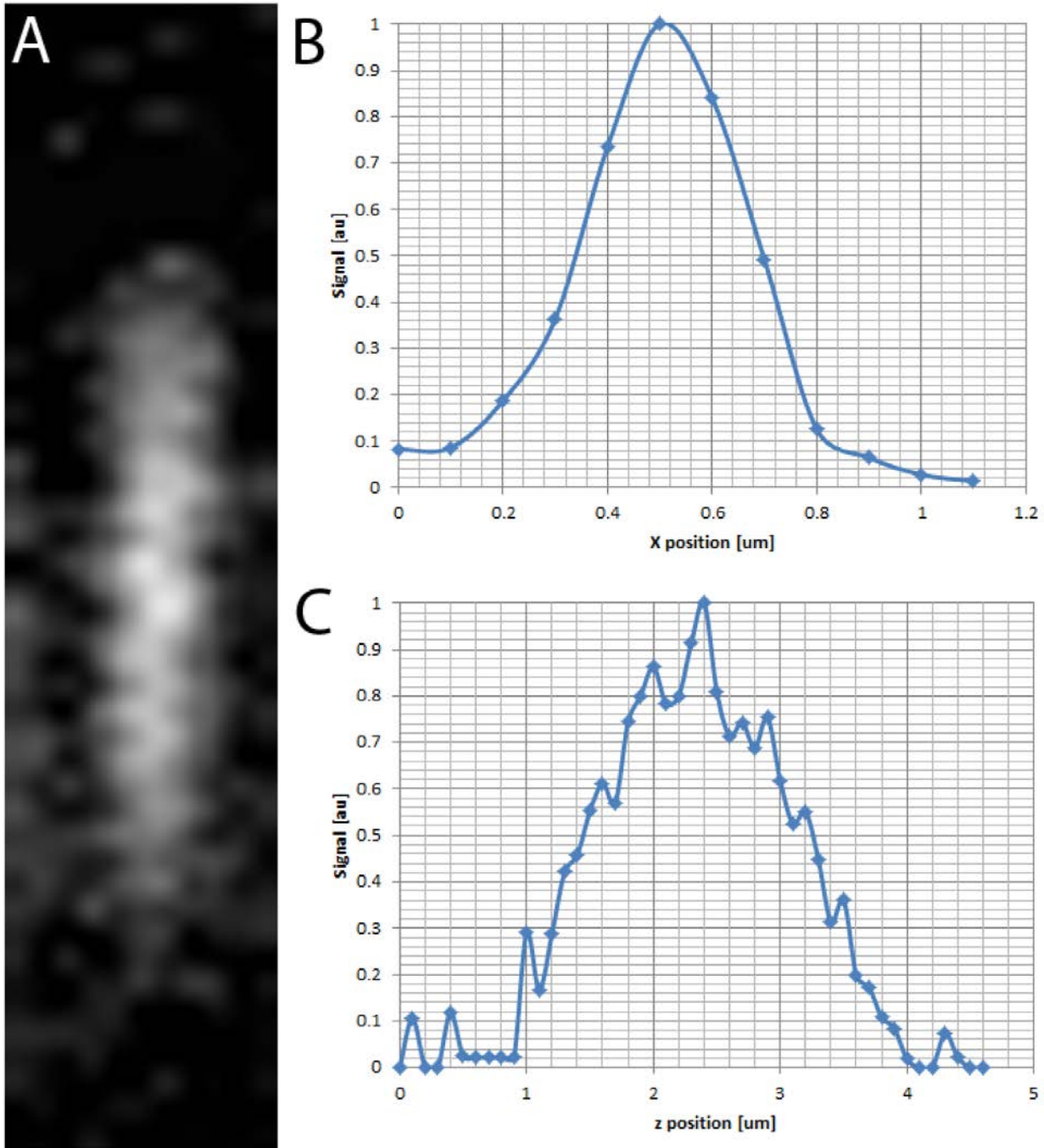
17



1
 2 **Fig 7. MLP-based diagnostic prediction.** (A) Heat map depiction of the classification of cases
 3 as lesional or non-lesional via MLP. Green checks indicate correct MLP prediction, red circles
 4 indicate incorrect prediction. (B) Heat map depiction of the classification of cases as glial or non-
 5 glial via MLP. Green checks indicate correct MLP prediction, red circles indicate incorrect
 6 prediction. (C) Summary of MLP results from test set of 30 neurosurgical cases (patients 72-
 7 101). The fraction of correct tiles is indicated by the hue and intensity of each heat map tile, as
 8 well as the predicted diagnostic class.

1 SUPPLEMENTAL MATERIALS

2



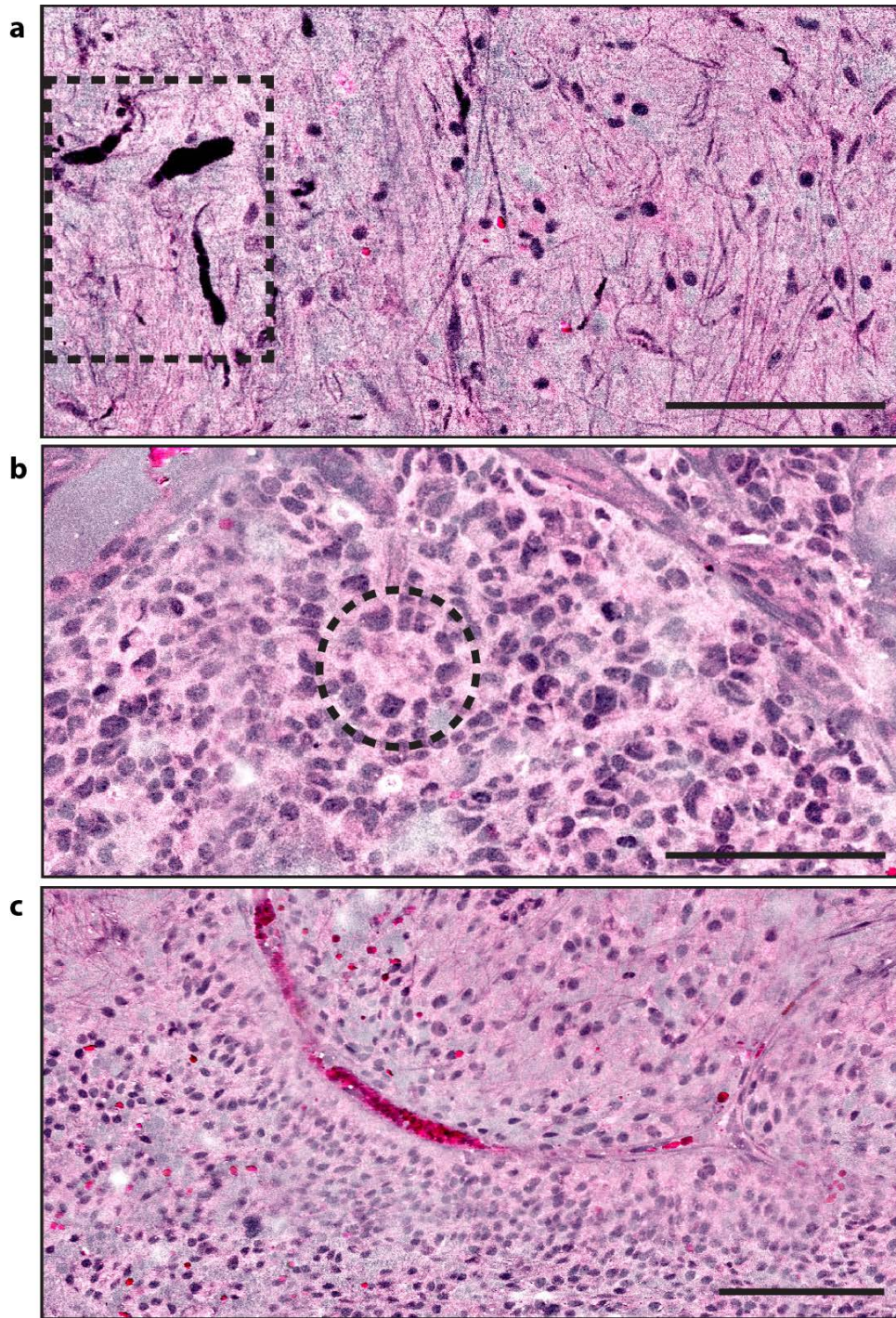
3

4

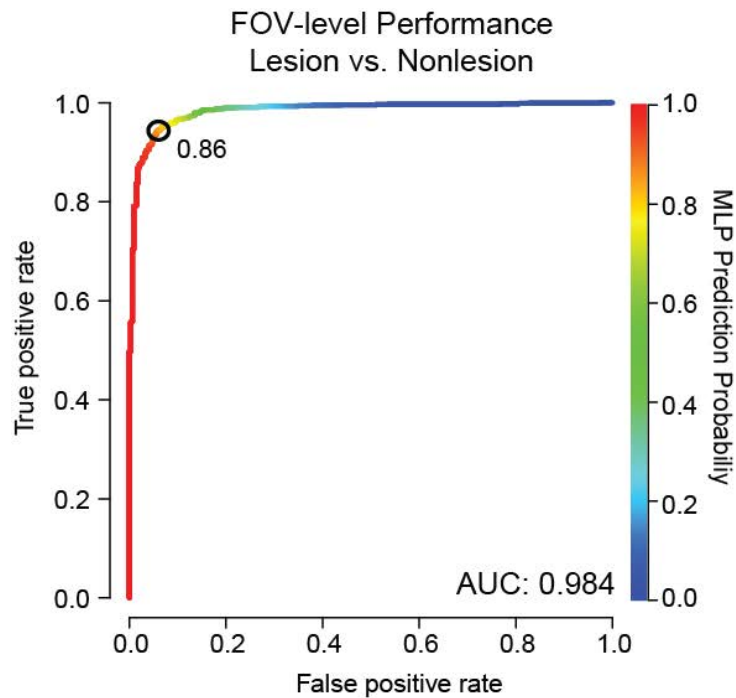
5 **Fig. S1. Axial and lateral resolution of the clinical SRS microscope.** (A) XZ image of a
6 300nm polystyrene bead generated from a 1000 x 1000 x 40 pixel image stack with 100nm
7 sampling in each dimension. (B) Lateral full width of half maximum (FWHM) is 360nm. (C)
8 Axial FWHM is 1.8 μ m.

9

10



1
 2 **Fig. S2. SRH of pediatric posterior fossa tumors.** (A) SRH reveals Rosenthal fibers (dashed
 3 box) in a pilocytic astrocytoma, which appear dark, given their protein-rich nature. The hair-like,
 4 piloid architecture of these moderately hypercellular tumors is apparent as well. (B)
 5 Medulloblastoma with marked hypercellularity, nuclear molding and pleomorphism, rosettes
 6 (dashed circle) and microvascular proliferation contrasts sharply with pilocytic astrocytoma. (C)
 7 Monomorphic, round-to-oval cells that encircle blood vessels in pseudorosettes are demonstrated
 8 in ependymoma. Scale bars = 100 μ m.



Pathology Diagnosis

		Pathology Diagnosis	
		Nonlesion	Lesion
MLP Prediction*	Nonlesion	321	83
	Lesion	20	1399

*MLP Probability Cutoff = 0.86

Specificity: 0.941

Sensitivity: 0.945

1
2
3
4
5
6
7
8
9
10
11
12
13
14
15
16
17
18
19
20
21
22
23
24
25
26
27
28
29

Figure S3: MLP performance at FOV level for lesional classification. The MLP assigns probabilities of membership to each FOV in one of four classes: non-lesional, low-grade glial, high-grade glial or non-glial tumor. The categories can be condensed into non-lesional and lesional (low-grade glial, high-grade glial and non-glial tumor) classes yielding a probability that a FOV is lesional or non-lesional. **(A)** Ability of MLP prediction probability to distinguish lesional from non-lesional FOVs shown by ROC analysis of all 1823 FOVs from the 30 survey cases. **(B)** The contingency table and sensitivity and specificity metrics at the MLP probability threshold optimizing sensitivity and specificity.

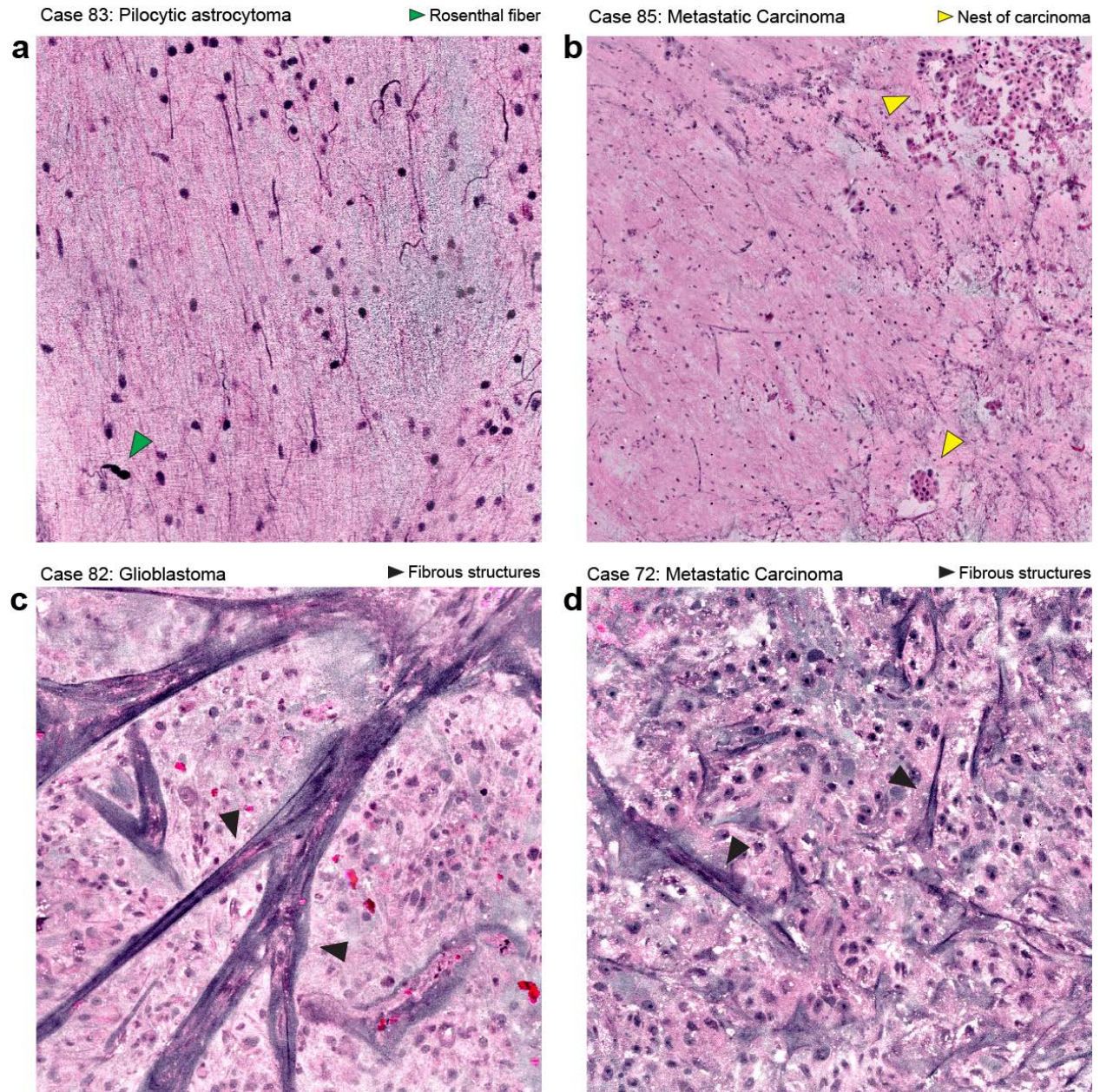


Figure S4: Cases incorrectly classified by the MLP. (A) A specimen from a pilocytic astrocytoma (patient 84) demonstrating predominantly normal appearing glial tissue that is minimally hypercellular with rare Rosenthal fibers (green arrowhead). (B) In a specimen from a metastatic carcinoma (patient 72), the area imaged contained two small nests of carcinoma (yellow arrowheads) that were essential in making the diagnosis. (C) The glioblastoma shown here (patient 82) contained angiogenic blood vessels with prominent protein deposition in their walls (black arrowheads) and resemble the fibrous stromal elements (black arrowheads) characteristically observed in metastatic carcinomas (patient 85).

1
 2
 3
 4
 5
 6
 7
 8
 9
 10
 11
 12
 13

1
2
3
4
5
6
7
8
9
10
11
12
13
14
15
16
17
18
19
20
21
22
23
24
25
26
27
28
29
30
31
32
33
34
35
36
37
38
39
40
41
42
43
44
45

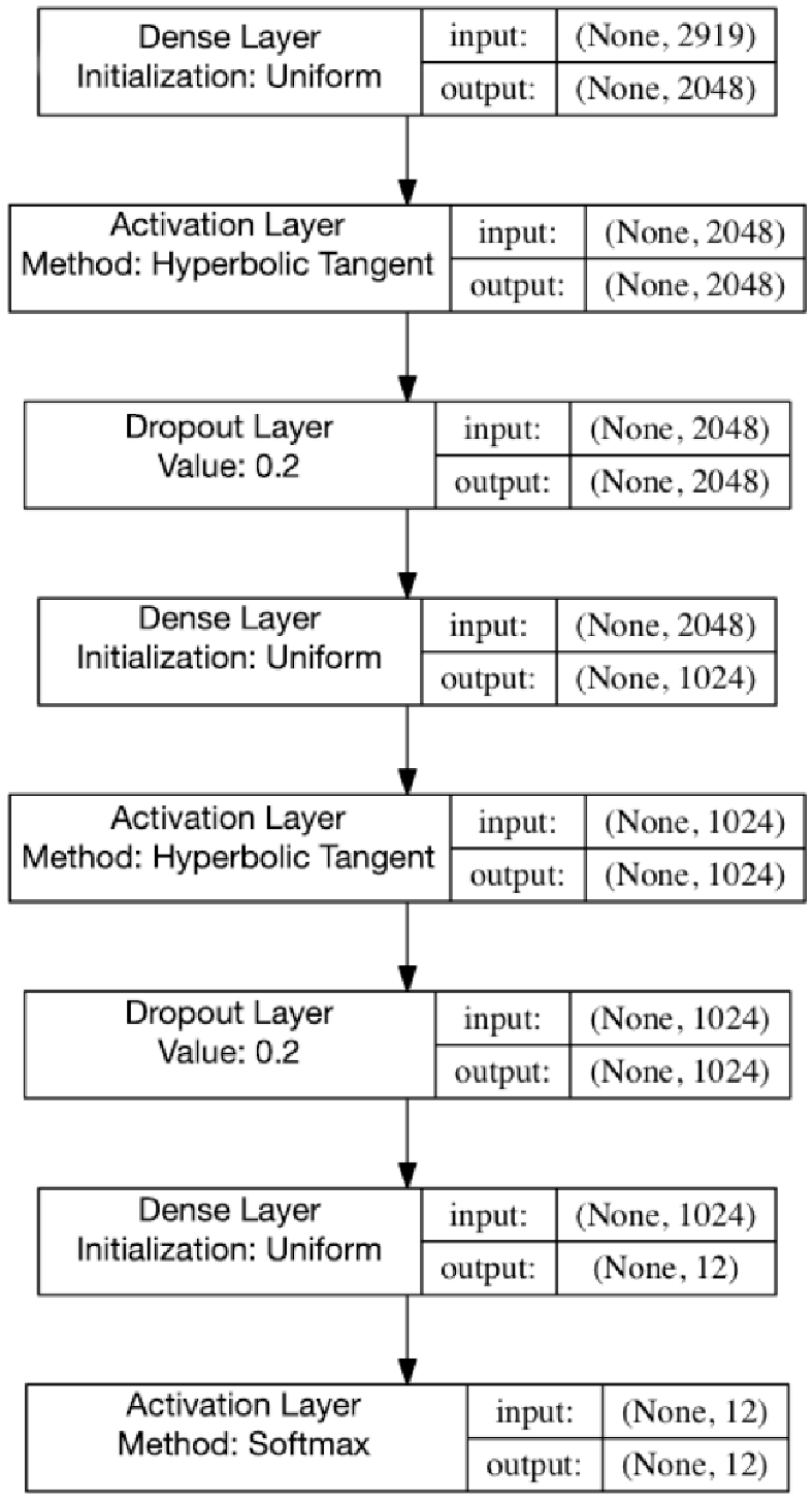


Fig. S5. Process/program design for creation of the multilayer perceptron.

1 **Table S1: Descriptive Statistics of the Case Series**

Patient	Age (yrs)	Sex	Tumor Location	Frozen Section Diagnosis	Final Diagnosis
1	52	M	Right temporal	Cortex with gliosis, rare atypical cells	Anaplastic astrocytoma, WHO grade III
2	44	M	Left insular	Glioma, favor low-grade	Low grade glioma
3	36	F	Right frontal	Low-grade glioma	Oligodendroglioma
4	55	F	Right frontal	Glioma	Glioblastoma
5	33	F	Left parietal	Meningioma	Meningioma
6	33	F	Left temporal	n/a	Normal neocortex/hippocampal sclerosis
7	62	F	Right Parietal	Glioblastoma	Glioblastoma
8	53	F	Left parietal	Glioblastoma	Glioblastoma
9	29	M	Left frontal	Infiltrating glioma	Astrocytoma, WHO grade II
10	57	M	Right temporoparietal	n/a	Metastatic bladder adenocarcinoma
11	34	M	Left temporal	n/a	Normal neocortex/hippocampal sclerosis
12	27	M	Right temporal	Gliotic brain tissue with atypical cells	Diffuse astrocytoma, WHO grade II
13	49	M	Left parietal	Recurrent glioma	Recurrent glioblastoma, with treatment effect
14	51	M	Right frontal	High-grade glioma	Glioblastoma
15	70	M	Left temporal	Necrosis, gliosis, atypical cells	Glioblastoma
16	68	F	Right frontal	High-grade neoplasm	Gliosarcoma
17	63	F	Left frontal	Malignant neoplasm, favor metastasis	Metastatic melanoma
18	62	M	Right parietal	Metastatic carcinoma	Metastatic ovarian adenocarcinoma
19	61	F	Right parietal	Scattered glioma cells	Glioblastoma

20	77	M	Right parietal	Glioblastoma	Glioblastoma
21	50	F	Left temporal	Infiltrating glioma	Anaplastic astrocytoma, WHO grade III
22	34	F	Posterior fossa	Infiltrating glioma	Recurrent infiltrating glioma
23	55	M	Right frontal	Infiltrating glioma	Glioblastoma
24	12	F	Posterior fossa	Glial tumor	Pilocytic astrocytoma
25	57	M	Left temporoparietal	Recurrent glioma	Glioblastoma
26	51	F	Right frontotemporal	Meningioma	Meningioma
27	69	F	Left temporal	High-grade glioma	Anaplastic oligodendroglioma, WHO grade III
28	51	M	Right temporal	Infiltrating glioma	Diffuse astrocytoma, WHO grade II
29	67	F	Parasagittal	Meningioma	Meningioma
30	70	F	Left parietal	n/a	Recurrent atypical meningioma
31	70	M	Right insular	Glioblastoma	Glioblastoma
32	64	F	Right temporal	Glioma	Diffuse astrocytoma, WHO grade II
33	49	M	Left parietal	Meningioma	Meningioma
34	38	F	Left occipital	Meningioma	Meningioma
35	30	M	Left occipital	n/a	Cortical dysplasia
36	13	M	Posterior fossa	Medulloblastoma	Medulloblastoma
37	40	M	Spinal cord	Glial neoplasm, favor astrocytoma	Glioblastoma
38	62	F	Right temporal	Lesional tissue	Diffuse astrocytoma, WHO grade II
39	74	M	Right frontal	High-grade glioma	Glioblastoma
40	51	M	Right parietal	Malignant neoplasm, favor metastasis	Metastatic melanoma

41	54	M	Right parietal	Recurrent glioma	Recurrent glioma, WHO grade II
42	24	F	Left occipital	Metastasis	Metastatic breast adenocarcinoma
43	29	M	Left frontal	Lesional tissue	Recurrent anaplastic astroblastoma
44	66	M	Posterior fossa	Ependymoma	Recurrent ependymoma, WHO grade II
45	45	M	Right frontotemporal	Recurrent glioma	Glioblastoma
46	65	M	Right occipital	Metastatic carcinoma	Metastatic lung adenocarcinoma
47	56	M	Left parietal	Glioblastoma	Glioblastoma
48	46	M	Left frontal	Glioma	Anaplastic astrocytoma, WHO grade III
49	7	M	Posterior fossa	Glioma, favor pilocytic astrocytoma	Pilocytic astrocytoma
50	54	F	Left frontal	Glioblastoma	Glioblastoma
51	69	F	Left frontal	Glioblastoma	Recurrent glioblastoma
52	57	F	Left frontal	Meningioma	Meningioma
53	49	F	Left frontal	Glioma	Anaplastic oligodendroglioma, WHO grade III
54	33	F	Right frontal	Glioma	Anaplastic astrocytoma, WHO grade III
55	69	F	Right parietal	Meningioma	Meningioma
56	58	F	Left frontal	Glioblastoma	Glioblastoma
57	48	M	Left frontal	Metastatic adenocarcinoma	Metastatic adenocarcinoma
58	68	F	Right frontal	Metastatic carcinoma	Metastatic carcinoma
59	20	F	Right frontal	Low-grade glioneuronal neoplasm	Ganglioglioma, WHO Grade I
60	52	F	Right temporal	Glioma	Anaplastic oligodendroglioma, WHO grade III
61	78	F	Right frontal	Glioblastoma	Glioblastoma

62	40	F	Right frontal	Metastatic carcinoma	Metastatic carcinoma, ovarian
63	40	F	Left frontal	Glioblastoma	Recurrent glioblastoma
64	53	F	Left frontal	Glioblastoma	Glioblastoma
65	34	M	Left temporal	Infiltrating glioma	Oligodendroglioma, WHO grade II
66	33	F	Left parietal	Meningioma	Meningioma
67	66	M	Left occipital	n/a	Glioblastoma
68	60	F	Right frontal	Recurrent/residual glioma	Anaplastic astrocytoma, WHO grade III
69	4	M	Posterior fossa	Small round blue cell tumor	Medulloblastoma
70	53	M	Right frontal	Recurrent/residual high-grade glioma	Glioblastoma
71	61	F	Right frontal	Metastatic adenocarcinoma	Metastatic adenocarcinoma, colon primary
72	52	F	Cerebellar	Metastatic carcinoma	Metastatic lung adenocarcinoma
73	36	M	Right frontal	Low-grade glioma	Oligodendroglioma
74	71	M	Right temporal	Metastatic tumor	Metastatic esophageal adenocarcinoma
75	62	F	Right frontotemporal	Glioma	Glioblastoma
76	46	F	Left frontal	High-grade glioma	Recurrent anaplastic astrocytoma
77	39	M	Left frontal	High-grade glioma	Glioblastoma
78	63	F	Left occipital	Metastatic tumor	Metastatic breast carcinoma
79	77	M	Right temporal	Metastatic carcinoma	Metastatic squamous cell carcinoma
80	41	F	Right insular	Glioma	Anaplastic oligodendroglioma, WHO III
81	53	F	Left frontal	Recurrent/residual high-grade glioma	Recurrent anaplastic oligodendroglioma, WHO grade III

82	87	M	Left temporal	Malignant glioma	Glioblastoma
83	5	M	Posterior fossa	Glioma, favor	Pilocytic astrocytoma
101	15	M	Posterior fossa	Malignant small round blue cell pilocytic astrocytoma	Malignant small round blue cell
85	55	M	Left frontal	Metastatic carcinoma	Metastatic renal cell carcinoma
86	43	F	Left temporal	Glioma, WHO grade II	Recurrent anaplastic astrocytoma
87	64	M	Posterior fossa	Ependymoma	Ependymoma, WHO grade II
88	66	M	Right frontal	Lesional tissue	Mantle cell lymphoma
89	56	F	Left temporal	Glioma	Glioblastoma
90	34	F	Spinal cord	Ependymoma	Ependymoma
91	67	F	Right frontal	Gliotic brain tissue with atypical cells*	Recurrent glioblastoma Recurrent glioblastoma
92	61	F	Left frontal	Infiltrating glioma*	
93	74	M	Left temporal	n/a**	Normal neocortex/hippocampal sclerosis
94	76	M	Right temporal lobe	Recurrent glioma*	Recurrent glioblastoma
95	69	M	Right parietal	Meningioma Low-grade glioma	Meningioma
96	12	M	Right temporal		Ganglioglioma
97	24	F	Left occipital	Metastatic tumor	Metastatic breast adenocarcinoma
98	4	M	Posterior fossa	Astrocytoma, favor pilocytic	Pilocytic astrocytoma
99	68	M	Left parietal	Glioblastoma*	Recurrent glioblastoma
100	1	M	Posterior fossa	Small round blue cell tumor	Medulloblastoma
101	15	M	Posterior fossa	Malignant small round blue cell tumor	Malignant small round blue cell tumor

1 Note: Cases in bold (72-101) were used in the survey comparing SRH to H&E histology and as
2 the test set for the multilayer perceptron.
3 *Non-lesional tissue samples obtained at the time of frozen in these specimens were included in
4 the survey. The non-lesional diagnosis of specimens utilized was corroborated by SCP, a
5 neuropathologist.
6 ** Comparison of the SRS image of this tissue was made to a portion of the frozen section from
7 case 63, which contained non-lesional tissue, as verified by SCP.
8 “n/a” indicates frozen section not sent.
9