



# Characterization of protein kinase C isoform's action on retinoblastoma protein phosphorylation, vascular endothelial growth factor-induced endothelial cell proliferation, and retinal neovascularization

The Harvard community has made this article openly available. [Please share](#) how this access benefits you. Your story matters

Citation	Suzuma, K., N. Takahara, I. Suzuma, K. Isshiki, K. Ueki, M. Leitges, L. P. Aiello, and G. L. King. 2002. Characterization of Protein Kinase C Isoform's Action on Retinoblastoma Protein Phosphorylation, Vascular Endothelial Growth Factor-Induced Endothelial Cell Proliferation, and Retinal Neovascularization. <i>Proceedings of the National Academy of Sciences</i> 99, no. 2: 721–726. doi:10.1073/pnas.022644499.
Published Version	<a href="https://doi.org/10.1073/pnas.022644499">doi:10.1073/pnas.022644499</a>
Citable link	<a href="http://nrs.harvard.edu/urn-3:HUL.InstRepos:29074746">http://nrs.harvard.edu/urn-3:HUL.InstRepos:29074746</a>
Terms of Use	This article was downloaded from Harvard University's DASH repository, and is made available under the terms and conditions applicable to Other Posted Material, as set forth at <a href="http://">http://</a>



# Characterization of protein kinase C $\beta$ isoform's action on retinoblastoma protein phosphorylation, vascular endothelial growth factor-induced endothelial cell proliferation, and retinal neovascularization

Kiyoshi Suzuma\*, Noriko Takahara\*, Izumi Suzuma\*, Keiji Isshiki\*, Kohjiro Ueki\*, Michael Leitges<sup>†</sup>, Lloyd Paul Aiello\*, and George L. King\*<sup>§</sup>

\*Research Division, Joslin Diabetes Center, Boston, MA 02215; and <sup>†</sup>Max-Planck-Institut für Experimentelle Endokrinologie, Feodor-Lynen Strasse 7, 30625 Hannover, Germany

Communicated by Yasutomi Nishizuka, Kobe University, Kobe, Japan, December 3, 2001 (received for review September 10, 2001)

Retinal neovascularization is a major cause of blindness and requires the activities of several signaling pathways and multiple cytokines. Activation of protein kinase C (PKC) enhances the angiogenic process and is involved in the signaling of vascular endothelial growth factor (VEGF). We have demonstrated a dramatic increase in the angiogenic response to oxygen-induced retinal ischemia in transgenic mice overexpressing PKC $\beta$ 2 isoform and a significant decrease in retinal neovascularization in PKC $\beta$  isoform null mice. The mitogenic action of VEGF, a potent hypoxia-induced angiogenic factor, was increased by 2-fold in retinal endothelial cells by the overexpression of PKC $\beta$ 1 or  $\beta$ 2 isoforms and inhibited significantly by the overexpression of a dominant-negative PKC $\beta$ 2 isoform but not by the expression of PKC  $\alpha$ ,  $\delta$ , and  $\zeta$  isoforms. Association of PKC $\beta$ 2 isoform with retinoblastoma protein was discovered in retinal endothelial cells, and PKC $\beta$ 2 isoform increased retinoblastoma phosphorylation under basal and VEGF-stimulated conditions. The potential functional consequences of PKC $\beta$ -induced retinoblastoma phosphorylation could include enhanced E2 promoter binding factor transcriptional activity and increased VEGF-induced endothelial cell proliferation.

Protein kinase C (PKC) activation enhances angiogenesis by participating in the intracellular signaling of vascular endothelial growth factor (VEGF) in endothelial cells (1–3). VEGF, a potent angiogenic factor that is induced by hypoxia plays a central role in the development of neovascularization in multiple diseases including tumor growth (4, 5), rheumatoid arthritis (6), and proliferative diabetic retinopathy (7, 8). VEGF can activate several PKC isoforms including  $\alpha$ ,  $\beta$ 1 and  $\beta$ 2, and  $\delta$  isoforms (2, 7). Involvement of PKC activation in VEGF action has also been suggested by the use of a PKC $\beta$  isoform selective inhibitor, which decreased VEGF-induced endothelial cell proliferation and retinal vascular permeability (2, 7). However, definitive *in vivo* evidence on the role of specific PKC isoforms with regard to hypoxia-induced angiogenesis is not available. In addition, the potential signaling mechanism by which PKC isoforms are acting to enhance VEGF-induced endothelial cell proliferation is unknown.

## Materials and Methods

**Mouse.** Linearized PEP8-PKC $\beta$ 2 DNA was used to derive transgenic mice as described (9–11). PKC $\beta$ 2 cDNA probe was used to examine the incorporation of the transgene. Transgene expression was confirmed by Northern blot and immunoblot on heart, aorta, and retina. Founders were bred with C57BL/6 mice and F<sub>1</sub> mice were used for experiments. PKC $\beta$  null mice have been described previously (12).

**Ischemia-Induced Proliferative Retinopathy.** The study adhered to the Association for Research in Vision and Ophthalmology statement for the Use of Animals in Ophthalmic and Vision Research. Postnatal day 7 (P7) mice and their nursing mothers were exposed to  $75 \pm 2\%$  oxygen for 5 days to induce and then returned to room air inducing retinal vaso-obliteration. Maximum neovascularization was observed at P17. Flat-mounted, fluorescein-conjugated dextran-perfused retinas were examined to assess the retinal vasculature (see refs. 13 and 14).

**Quantitation of Neovascularization.** Mice at P17 were killed and eyes enucleated, fixed, and embedded in paraffin. Fifty serial sections (6  $\mu$ m) starting at the optic nerve head were placed on microscope slides. After staining with periodic acid/Schiff reagent and hematoxylin, 10 intact sections of equal length, each 30  $\mu$ m apart, were evaluated for a span of 300  $\mu$ m. All retinal vascular cell nuclei anterior to the internal limiting membrane were counted in each section by a fully masked protocol. The mean of all 10 counted sections yielded average neovascular cell nuclei per 6- $\mu$ m section per eye (see refs. 13 and 14).

**Northern and Western Blot Analysis.** Total RNA or protein from 8–10 retinas at P14 was assessed by Northern (15) or Western (16) blot analysis as described.

**Cell Culture.** Primary cultures of bovine retinal endothelial cells (BREC) were isolated and cultured as described (17). Only cells from passages 2–7 were used for the experiments.

**Recombinant Adenoviruses.** cDNA of dominant-negative PKCs was constructed as described (18–21). The replication-deficient recombinant adenoviruses were constructed by homologous recombination between the parental virus genome and shuttle vector as described (22). The dominant-negatives of PKC $\beta$ 2 isoform were constructed by converting threonine-500 to valine which caused the PKC isoform to become kinase-inactive. The adenoviruses were applied at a concentration of  $1 \times 10^8$  plaque-forming units/ml, and adenoviruses with the same parental genome carrying enhanced green fluorescent protein

Abbreviations: PKC, protein kinase C; VEGF, vascular endothelial growth factor; Pn, postnatal day *n*; Rb, retinoblastoma; BREC, bovine retinal endothelial cells; Tg, transgenic; KO, null; PI3-kinase, phosphatidylinositol 3-kinase; E2F, E2 promoter binding factor; ERK, extracellular signal-regulated kinase.

<sup>§</sup>To whom reprint requests should be addressed. E-mail: George.King@joslin.harvard.edu.

The publication costs of this article were defrayed in part by page charge payment. This article must therefore be hereby marked "advertisement" in accordance with 18 U.S.C. §1734 solely to indicate this fact.

CELL BIOLOGY

(GFP) gene (CLONTECH) were used as controls. Infection efficiency was monitored by fluorescence which showed expression in >80% of cells. Expression of each recombinant protein was confirmed by Western blot analysis of each PKC isoform. Both the wild types and their respective dominant-negative isoforms exhibited increases 8- to 10-fold above the endogenous isoforms by protein levels.

**Cell Growth Assay.** BRECs were plated onto 12-well culture plates and incubated overnight in DMEM containing 10% calf serum, after which the cells were infected with adenovirus (23). After incubation for 4 days at 37°C with or without VEGF (0.6 nM), the cells were lysed in 0.1% SDS, and the DNA content was measured by means of Hoechst-33258 dye and a fluorometer (model TKO-100, Hoefer). E2 promoter binding factor (E2F) decoys were used as described (24).

**Cell Migration Assay.** A modified Boyden chamber migration assay was performed by using BRECs (25). The top and bottom surface of the chamber membrane was coated with collagen I. Serum-starved BRECs overexpressing each PKC isoform were induced to migrate toward VEGF (0.6 nM) placed in the bottom chamber and harvested after 4 h. Cells that migrated to the bottom of the chamber were enumerated by counting SYTOX green (Molecular Probes) nucleic acid-stained cells.

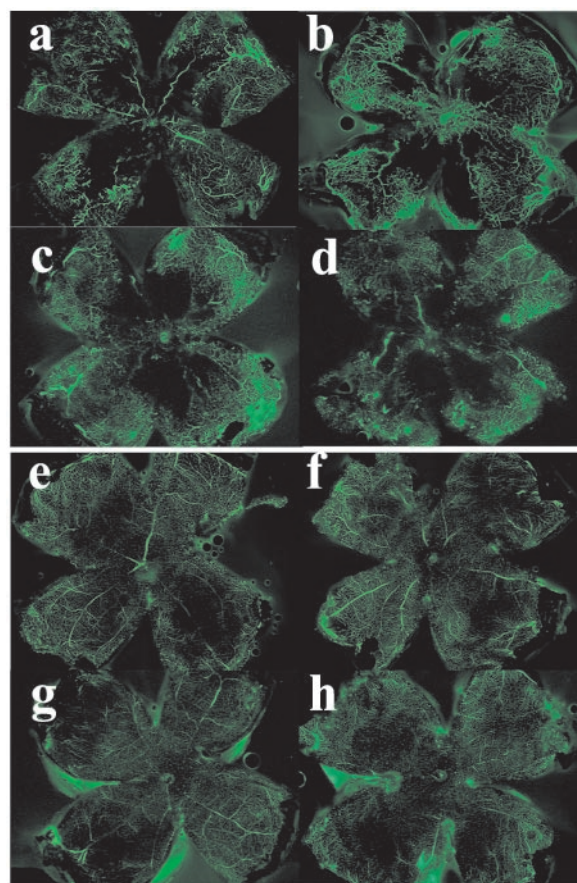
**In Vitro Phosphorylation of Retinoblastoma (Rb) Protein.** *In vitro* phosphorylation of Rb protein by recombinant PKC (Upstate Biotechnology, Lake Placid, NY) was performed as described (26) with recombinant Rb protein (QED Bioscience, San Diego) as a substrate.

**Luciferase Assay.** Luciferase reporter constructs (Mercury Cell Cycle Profiling System, CLONTECH) were introduced into cells with LipofectAMINE reagent (Life Technologies, Rockville, MD) as instructed by the manufacturer. Luciferase activity was measured by using the Dual-Luciferase Reporter Assay system (Promega).

## Results

**Role of PKC $\beta$  in Ischemia-Induced Retinal Neovascularization.** The effects of PKC $\beta$  isoforms on ischemia-induced retinal neovascularization were studied in the oxygen-induced retinopathy-of-prematurity model by using PKC $\beta$  null mice (12) (PKC $\beta$  KO mice) or transgenic mice overexpressing PKC $\beta$ 2 isoform (PKC $\beta$  Tg) in vascular tissues under preproendothelin promoter (9, 10), which exhibited a 9-fold increase in PKC activity. Five days after oxygen treatment, both wild-type and PKC $\beta$  Tg mice developed retinal neovascularization as observed by fluorescein-perfused retinal flat mount (Fig. 1). However, a more extensive network of neovascularization was observed in PKC $\beta$  Tg mice (Fig. 1*b*) than with the wild type (B6/FVB) (Fig. 1*a*). In contrast, much less neovascularization was observed in the retina of PKC $\beta$  KO mice (Fig. 1*d*) than with their respective control mice (B6/129) (Fig. 1*c*). No retinal neovascularization or significant morphological differences were observed in the vasculature of any groups not receiving oxygen treatment (Fig. 1*e–h*). No differences were observed in the extent of retinal capillary occlusion in mice with oxygen treatment at postnatal day 12 (P12) (data not shown).

Analysis of retinal cross-sections demonstrated that the number of endothelial cell nuclei anterior to the internal limiting membrane (a measure of the extent of neovascularization) decreased by 55% in PKC $\beta$  KO mice (Fig. 2*c* control, 2*d*-KO mice) and increased by 3.2-fold in PKC $\beta$  Tg mice (Fig. 2*a*, control, and *b*, Tg mice) as compared with their respective controls. These data suggested that activation of PKC $\beta$ 2 isoform contributed significantly to the development of neovasculariza-

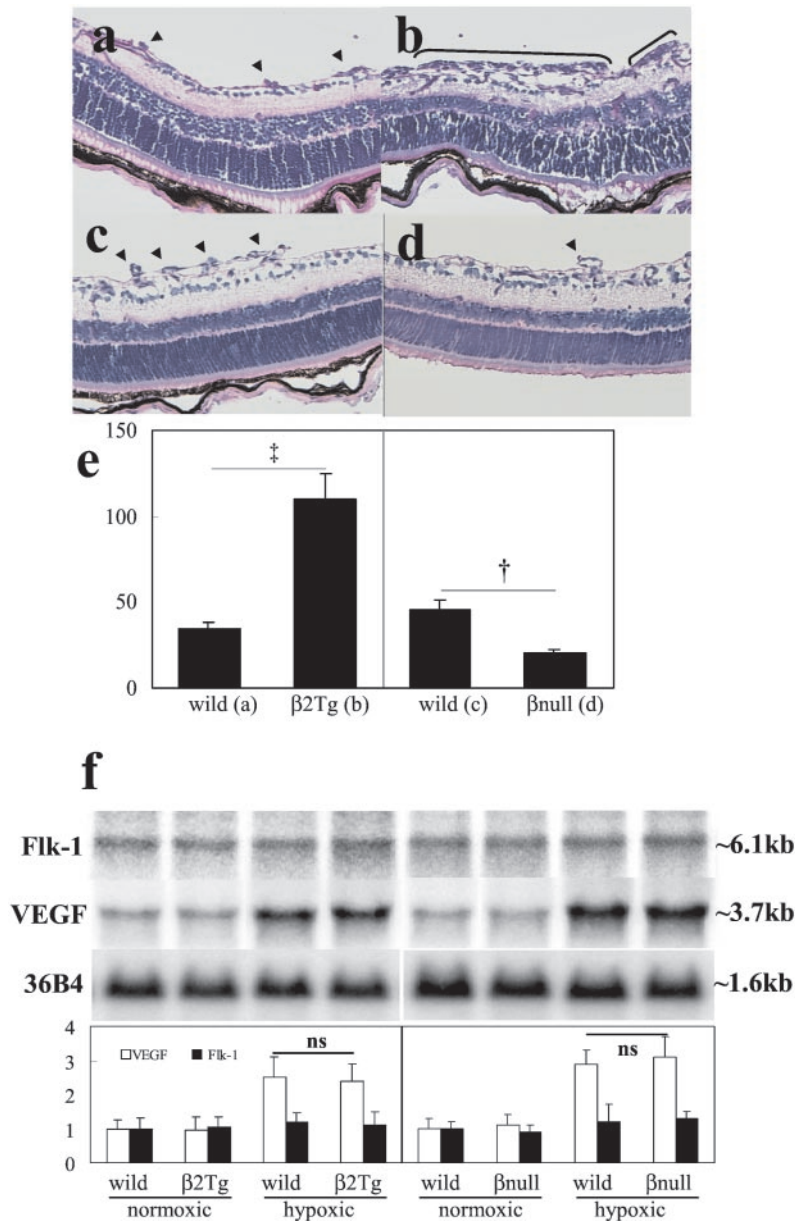


**Fig. 1.** Retinal vascular pattern by fluorescein-perfused retinal flat mount of (a) wild-type and (b) PKC $\beta$ 2 transgenic mice (FVB  $\times$  C57BL/6); (c) wild type and (d) PKC $\beta$  null mice (129sv  $\times$  C57BL/6), with (a–d) and without (e–h) oxygen treatment. Five days after oxygen treatment (P17), fluorescence perfusion showed that the vasculature was increased substantially in PKC $\beta$ 2 transgenic mice and reduced in knockout mice as compared with wild-type mice. No retinal neovascularization or morphological differences in the vasculature were observed in the following groups without oxygen treatment; (e) wild-type and (f) PKC $\beta$ 2 transgenic mice; (g) wild-type and (h) PKC $\beta$  knockout mice.

tion in response to hypoxia. However, PKC $\beta$ 2 isoform is not essential for the angiogenic process during embryonic development or growth, because both of these processes are normal in PKC $\beta$  Tg and KO mice.

VEGF has been reported to be one of the main growth factors inducing neovascularization in the oxygen-induced retinopathy model (13). Thus, mRNA levels of VEGF and Flk1, a tyrosine kinase receptor primarily mediating VEGF's mitogenic actions in endothelial cells, were measured by Northern blot analysis. No differences were detected in the mRNA levels of VEGF or Flk1 in either PKC $\beta$  transgenic mice or knockout mice as compared with their individual controls on postnatal day 14 (Fig. 2*f*). These data suggested that the angiogenic effects of PKC $\beta$  isoform are potentially caused by enhancement of VEGF's intracellular action rather than by increasing the concentration of VEGF or Flk1.

**Role of PKC Isoforms in VEGF-Induced Angiogenic Responses.** The effects of various PKC isoforms on VEGF-induced cellular proliferation and migration were correlated with several intracellular signaling pathways in BRECs. VEGF (0.6 nM) induced a 2-fold increase in BRECs total DNA content of BRECs after 4 days. The addition of GFX (a general PKC inhibitor) and PD98059 (a MEK inhibitor) blocked VEGF's mitogenic activity

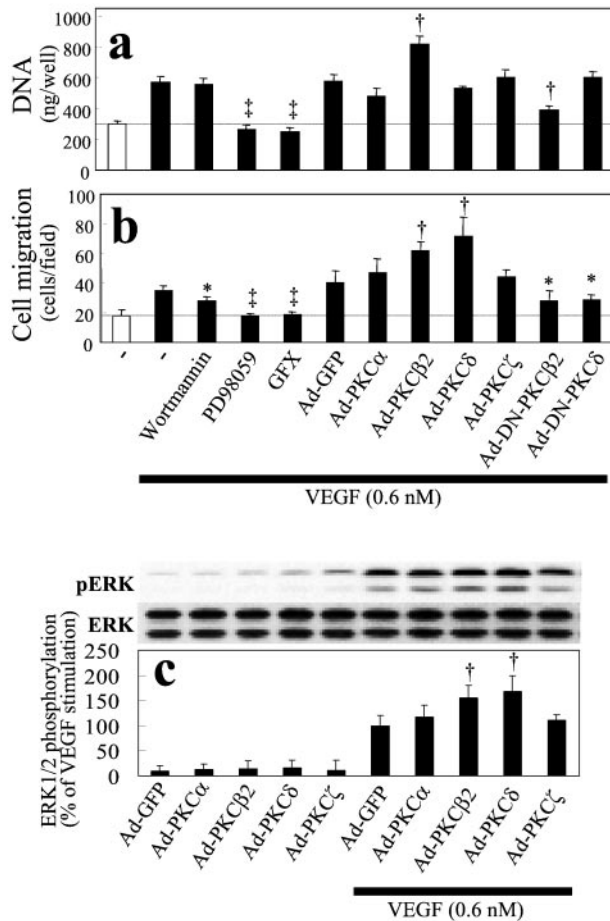


**Fig. 2.** Cross-sectional analysis of retina from (a) wild-type and (b) PKC $\beta$  transgenic mice; (c) wild-type and (d) PKC $\beta$  knockout mice. After retinal neovascularization was induced by oxygen treatment (P17), sections of the eyes were evaluated for neovascularization (parenthesis or arrowhead). (e) Quantification of retinal neovascularization (P17) by counting the neovascular cell nuclei. Vertical axis, number of nuclei anterior to the internal limiting membrane per 6- $\mu$ m cross section (mean  $\pm$  standard error of mean; data were calculated from 50 sections of five eyes). Symbols indicate significant differences at  $P < 0.01$  (†) and  $P < 0.001$  (‡). (f) Results were derived from Northern blot analysis of total RNA isolated from the retina of animals 2 days after oxygen treatment and from age-matched normal controls (P14). Northern blots with 36B4 control (Upper) and quantification (Lower). Results were calculated from three separate experiments.

completely (Fig. 3a) (2). The effects of each PKC isoform were determined by infecting BRECs with nonreplicating adenoviral vectors containing either the wild-type or kinase-inactive dominant-negative mutants of PKC  $\alpha$ ,  $\beta$ 1 and 2,  $\delta$ , and  $\zeta$  isoforms. (PKC $\beta$ 1 and  $\beta$ 2 had similar effects in all studies with BRECs.) Only PKC $\beta$  isoforms enhanced VEGF-induced growth in BRECs, resulting in an 86% increase. Overexpression of dominant-negative of PKC $\beta$ 2 isoform inhibited PKC $\beta$  activity by 90% and decreased VEGF-induced growth by 68% (Fig. 3a), suggesting that VEGF's mitogenic activity in BRECs depended in part on PKC $\beta$  isoform and mitogen-activated protein kinase pathway activation.

PKC activation also enhanced VEGF-induced BRECs migra-

tion. VEGF (0.6 nM) increased migration of BRECs 2-fold, an effect inhibited by GFX, PD98059, and partially (41%) by wortmannin [a phosphatidylinositol 3-kinase (PI3-kinase) inhibitor]. Overexpression of PKC  $\alpha$ ,  $\beta$ 2,  $\delta$ , and  $\zeta$  isoforms by adenoviral vectors increased protein levels of these PKC isoforms by more than 10-fold; however, only PKC $\beta$ 2 and  $\delta$  isoforms enhanced VEGF-induced migration, by 100% and 145%, respectively. Overexpression of dominant-negative PKC $\beta$ 2 and  $\delta$  isoforms, as described above, inhibited VEGF-induced BRECs migration by 55% and 32%, respectively (Fig. 3b). In addition, overexpression of PKC $\beta$ 2 and PKC $\delta$  isoforms increased VEGF-induced mitogen-activated protein kinase (extracellular signal-regulated kinase; ERK1/2) phosphorylation



**Fig. 3.** Role of PKC, PI3-kinase, ERK1/2, and specific PKC isoforms on VEGF-induced growth and migration (mean  $\pm$  standard deviation). VEGF (0.6 nM)-induced increases in (a) cell growth and (b) migration. (a) Cells were incubated with vehicle, GFX (1  $\mu$ M), wortmannin (100 nM), PD98059 (20  $\mu$ M), or infected for 4 days at 37°C with or without VEGF (0.6 nM), the cells were lysed in 0.1% SDS, and the DNA content was measured by means of Hoechst-33258 dye and a fluorometer (model TKO-100) to determine cell growth. (b) To evaluate cell migration, a modified Boyden chamber migration assay with BREC was performed. The top and bottom surface of the chamber membrane was coated with collagen I. Serum-starved BREC overexpressing each PKC isoform were induced to migrate toward VEGF (0.6 nM) placed in the bottom chamber and harvested after 4 h. Cells that migrated to the bottom of the chamber were enumerated by counting SYTOX green (Molecular Probes) nucleic acid-stained cells. Overexpression of PKC $\beta$ 1 had the same results as PKC $\beta$ 2 (data not shown). (c) Effects of individual PKC isoform on VEGF-induced ERK phosphorylation. Cells overexpressing each PKC isoform were incubated with VEGF (0.6 nM) for 10 min, and total proteins were separated by SDS-PAGE and transferred to nitrocellulose membrane. Immunoblots were probed with an antibody to phosphorylated ERK (Upper) and reprobed with antibody to total ERK (Lower). Symbols indicate significant differences at  $P < 0.05$  (\*),  $P < 0.01$  (†), and  $P < 0.001$  (§) vs. VEGF alone. Results were calculated from three separate experiments and are presented as mean  $\pm$  standard deviation.

by 61% and 74%, respectively (Fig. 3c), but did not increase VEGF-induced PI3-kinase–Akt activation (data not shown). These data indicated that both PKC $\beta$  and PKC $\delta$  isoforms mediated VEGF-induced ERK1/2 activation and migration, but only PKC $\beta$  isoform enhanced VEGF-induced endothelial cell proliferation, suggesting that these PKC isoforms have both common and distinct targets for their downstream actions.

**Role of PKC $\beta$  in VEGF-Induced Rb-E2F Pathway Activation.** Because PKC activation, particularly the  $\beta$  isoforms, enhanced VEGF's

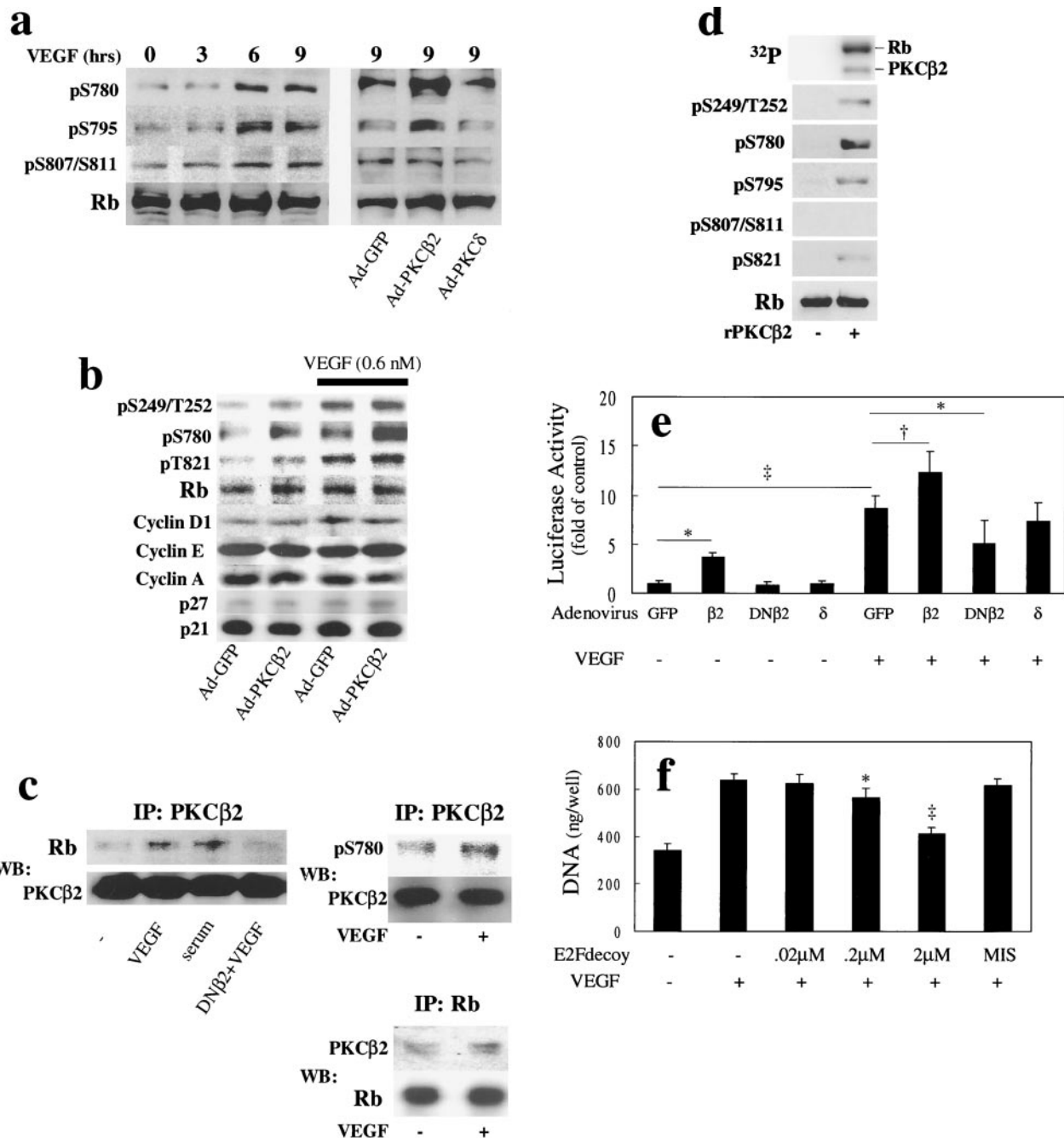
mitogenic activity in BREC, we characterized the effect of overexpressing PKC $\beta$ 2 isoform on various signaling molecules that regulate the progression of the cell cycle. VEGF and overexpression of PKC $\beta$ 2, but not PKC $\delta$  isoforms increased basal phosphorylation of Rb (Fig. 4), a tumor suppressor that can regulate cellular proliferation, differentiation, and death by binding and inactivating the E2F transcriptional factor family (27). As shown in Fig. 4a and b, VEGF increased phosphorylation of Rb in a time-dependent manner by up to 3-fold at all phosphorylation sites as quantified by various phospho-specific antibodies (S249/T252, S780, S795, S807/S811, and S821). Overexpression of PKC $\beta$ 2 isoform by adenoviral vectors increased basal- and VEGF-induced Rb phosphorylation at S780 and S795 (Fig. 4a) by more than 3-fold, but did not change significantly the phosphorylation at S249/T252, S807/S811, or S821 and did not alter the expression of cyclins or cyclin-dependent kinase inhibitors (Fig. 4b). Overexpression of PKC $\delta$  isoform did not significantly alter VEGF-induced phosphorylation of Rb.

To determine whether PKC $\beta$ 2 isoform can associate and phosphorylate Rb directly in BREC, immunoprecipitation studies were performed with anti-PKC $\beta$ 2 antibody, and Rb protein was detected by immunoblot analysis. At basal conditions, some association of PKC $\beta$ 2 isoform and Rb protein was observed. The addition of VEGF and serum increased the association of PKC $\beta$ 2 with Rb by 2.2- and 2.6-fold, respectively. Overexpression of PKC $\beta$ 2 dominant-negative did not associate with Rb (Fig. 4c). The same complex of PKC $\beta$ 2 and Rb were characterized with antibodies to pS780 of Rb, which showed a basal phosphorylation with the overexpression of PKC $\beta$ 2. The addition of VEGF (0.6 nM) increased phosphorylated Rb levels by 2- to 3-fold (Fig. 4c). Total cell lysates were immunoprecipitated with antibodies to Rb protein and immunoblotted with antibodies to PKC $\beta$ 2. At basal conditions some associations of PKC $\beta$ 2 and Rb were observed, but the addition of VEGF (0.6 nM) increased the amount of PKC $\beta$ 2-associated Rb protein by 1.7-fold (Fig. 4c). *In vitro* studies demonstrated that recombinant PKC $\beta$ 2 isoform phosphorylated Rb protein in the presence of diacylglycerol and phosphatidylserine at S249/T252, S780, S795, and S821 sites (Fig. 4d). These data suggested that PKC $\beta$ 2 isoform, when activated, could phosphorylate Rb protein at multiple, but specific sites in an isoform-selective manner.

To determine whether PKC $\beta$ 2 isoform could increase E2F activity by the phosphorylation of Rb protein, the effect of overexpressing PKC $\beta$ 2 isoform on VEGF-induced E2F activation was evaluated by luciferase assay in BREC. VEGF and overexpression of PKC $\beta$ 2 independently increased E2F activity by 8.6- and 3.7-fold, respectively. Overexpression of PKC $\beta$ 2 increased VEGF's effect by 49% (Fig. 4e). Again, overexpression of PKC $\delta$  isoform was not effective, whereas overexpression of PKC $\beta$ 2 dominant-negative inhibited VEGF's effect. Finally, inhibition of E2F by E2F double-structured DNA decoy decreased VEGF-induced BREC proliferation in a dose-dependent manner, with a maximum inhibition of 76% (Fig. 4f).

## Discussion

These studies have demonstrated that activation of the  $\beta$  isoforms of PKC can selectively enhance VEGF's mitogenic effects on endothelial cells and hypoxia-induced retinal neovascularization. VEGF's effect on endothelial cell growth differed from its effect on migration, which involved PKC $\delta$  isoform and PI3-kinase pathways. The mechanism of the mitogenic activity of PKC $\beta$  isoforms on BREC includes the activation of ERK and phosphorylation of Rb protein. These data have identified Rb protein as a potential isoform-selective target of the activated PKC $\beta$ 2 isoform in the endothelial cells. The isoform selectivity of PKC $\beta$  isoforms could be caused by their subcellular localiza-



**Fig. 4.** Effects of PKCβ2 isoform activation and VEGF on Rb phosphorylation and actions. (a) Time course of VEGF's (0.6 nM) stimulation or the overexpression of PKCβ2 or δ isoforms. Phosphorylation of S780, S795, and S807/S811 were quantified by phospho-specific antibodies. After the addition of VEGF, the cells were harvested at each time point and total protein was separated by SDS-PAGE, transferred to nitrocellulose membrane, and analyzed with phospho-specific and total Rb antibodies by immunoblot. (b) Effects of PKCβ2 overexpression on basal and VEGF-induced Rb phosphorylation at S780, S249/T252, and S821, and the pattern of expression of cyclin D1, E, A, and cyclin-dependent kinase inhibitors p27 and p21 were characterized after the addition of VEGF (0.6 nM) for 24 h. (c) Interaction of PKCβ2 and Rb protein *in vivo* (Left and Right Upper). BREC overexpressing PKCβ2 were incubated with VEGF (0.6 nM) or 10% calf serum for 24 h. Proteins were immunoprecipitated with anti-PKCβ2 antibodies and fractionated by SDS-PAGE. Immunoblots were probed with an antibody to Rb or phosphoserine 780 (Top) and reprobred with antibody to PKCβ2 (Bottom) to determine whether PKCβ2 can associate directly with Rb (Right Lower). Cells were incubated with VEGF (0.6 nM) for 24 h, and proteins were immunoprecipitated with anti-Rb antibodies and fractionated by SDS-PAGE. Immunoblots were probed with an antibody to PKCβ2 (Top) and reprobred with antibody to Rb (Bottom) to determine whether Rb can associate directly with PKCβ2. (d) *In vitro* phosphorylation of Rb by recombinant PKCβ2. PKCβ2 (0.2 μM) was incubated with Rb protein (1.2 μM) for 15 min at 30°C in the presence of Ca<sup>2+</sup> (1 mM), phosphatidylserine (100 μg/ml), and diacylglycerol (1.3 μg/ml). The reaction was initiated by the addition of ATP (30 μM) with [<sup>γ</sup>-<sup>32</sup>P]ATP (30 μCi/100 nmol). After 15 min, the reaction was terminated by the addition of Laemmli's sample buffer. Samples were separated by SDS-PAGE, dried, and exposed to PhosphorImager (Top), or transferred to nitrocellulose membrane, and analyzed with phospho-specific and total Rb antibodies by immunoblot. (e) Effects of VEGF and PKC on E2F promoter activity. Cells were transfected with reporter constructs 24 h after adenovirus infection containing each PKC isoform or mutant, and stimulated by VEGF (0.6 nM) for 9 h. Cells were harvested, and luciferase activity was measured. (f) Cells were incubated for 4 days at 37°C with or without VEGF (0.6 nM) after introduction of E2F (14 nucleotide base) decoy or mismatch control decoy. The cells were lysed in 0.1% SDS and the DNA content was measured. Symbols indicate significant differences at  $P < 0.05$  (\*),  $P < 0.01$  (†), and  $P < 0.001$  (‡). Results were calculated from three separate experiments and plotted as mean ± standard deviation.

tion that can translocate to the nuclear membrane when activated (28).

VEGF clearly can phosphorylate multiple serine and threonine sites on the Rb protein which are potential phosphorylation sites of cyclin D and E kinases in retinal capillary endothelial cells (29, 30). Phosphorylation of Ser-780, Ser-795, Ser-807, Ser-811, and Thr-821 decreases the binding of Rb to E2F, which would permit endothelial cells to progress from G<sub>1</sub> to later stages of the cell cycle (29–32). Activation of PKC $\beta$ 2 isoform also phosphorylated these serine and threonine sites, except Ser-807 and Ser-811 on the Rb *in vitro*. However, overexpression of PKC $\beta$ 2 isoform, but not the PKC $\delta$  or the PKC $\beta$ 2 dominant-negative isoforms, increased only the phosphorylation of Ser-780 and Ser-795 at the C-terminal of Rb but did not phosphorylate other sites induced by PKC $\beta$  isoform *in vitro* or by VEGF. Brown *et al.* (31) has reported that the loss of Ser-781 and the Ser-788 sites did not affect the binding of Rb to E2F-DNA. However, the phosphorylation of these sites combined with other phosphorylation sites in the N and C terminals affected by VEGF can alter the binding and the promoter activities of E2F on transcription (31, 32).

The results of the coprecipitation studies suggested that the activated PKC $\beta$ 2 but not its kinase-inactive dominant-negative isoform can directly bind and phosphorylate Rb. It is also

possible that PKC $\beta$ 2 isoform could indirectly phosphorylate Ser-780 and Ser-785 of Rb by binding to cyclin E kinase, which has been reported to bind and phosphorylate the same serine sites of Rb (29). Further studies will be needed to decipher the potential interactions of PKC $\beta$  isoforms with cyclin E kinase and the definitive role of Ser-780 and Ser-795 phosphorylation on Rb in mediating the enhancement of VEGF-induced endothelial cell proliferation and retinal neovascularization. However, these results have established that the activation of PKC $\beta$  isoforms can selectively enhance the mitogenic action of VEGF and hypoxia-induced retinal neovascularization potentially by directly binding to and phosphorylating Rb and subsequently permitting activation of E2F to mediate transcription and cell cycle progression in retinal endothelial cells.

We appreciate the suggestions provided by Dr. Edward P. Feener, and for technical assistance by Mr. Edward Boschetti. cDNA of PKCs and preendothelin promoter were kindly provided by Dr. Douglas Ways (Lilly Research Laboratories, Indianapolis) and Dr. Hiroki Kurihara (Tokyo University, Tokyo), respectively. This work was supported by National Institutes of Health Grants R01 EY5110 (to G.L.K.) and EY10827 (to L.P.A.). K.S. is a recipient of the Mary K. Iacocca Fellowship, and L.P.A. is a recipient of the Research to Prevent Blindness Dolly Green Scholarship.

1. Wu, L. W., Mayo, L. D., Dunbar, J. D., Kessler, K. M., Baerwald, M. R., Jaffe, E. A., Wang, D., Warren, R. S. & Donner, D. B. (2000) *J. Biol. Chem.* **275**, 5096–5103.
2. Xia, P., Aiello, L. P., Ishii, H., Jiang, Z. Y., Park, D. J., Robinson, G. S., Takagi, H., Newsome, W. P., Jirousek, M. R. & King, G. L. (1996) *J. Clin. Invest.* **98**, 2018–2026.
3. Takahashi, T., Ueno, H. & Shibuya, M. (1999) *Oncogene* **18**, 2221–2230.
4. Kim, K. J., Li, B., Winer, J., Armanini, M., Gillett, N., Phillips, H. S. & Ferrara, N. (1993) *Nature (London)* **362**, 841–844.
5. Plate, K. H., Breier, G., Weich, H. A. & Risau, W. (1992) *Nature (London)* **359**, 845–848.
6. Firestein, G. S. (1999) *J. Clin. Invest.* **103**, 3–4.
7. Aiello, L. P., Bursell, S. E., Clermont, A., Duh, E., Ishii, H., Takagi, C., Mori, F., Ciulla, T. A., Ways, K., Jirousek, M. *et al.* (1997) *Diabetes* **46**, 1473–1480.
8. Aiello, L. P., Avery, R. L., Arrigg, P. G., Keyt, B. A., Jampel, H. D., Shah, S. T., Pasquale, L. R., Thieme, H., Iwamoto, M. A., Park, J. E., *et al.* (1994) *N. Engl. J. Med.* **331**, 1480–1487.
9. Harats, D., Kurihara, H., Belloni, P., Oakley, H., Ziober, A., Ackley, D., Cain, G., Kurihara, Y., Lawn, R. & Sigal, E. (1995) *J. Clin. Invest.* **95**, 1335–1344.
10. Ohashi, Y., Kawashima, S., Hirata, K., Yamashita, T., Ishida, T., Inoue, N., Sakoda, T., Kurihara, H., Yazaki, Y. & Yokoyama, M. (1998) *J. Clin. Invest.* **102**, 2061–2071.
11. Wakasaki, H., Koya, D., Schoen, F. J., Jirousek, M. R., Ways, D. K., Hoit, B. D., Walsh, R. A. & King, G. L. (1997) *Proc. Natl. Acad. Sci. USA* **94**, 9320–9325.
12. Leitges, M., Schmedt, C., Guinamard, R., Davoust, J., Schaal, S., Stabel, S. & Tarakhovskiy, A. (1996) *Science* **273**, 788–791.
13. Aiello, L. P., Pierce, E. A., Foley, E. D., Takagi, H., Chen, H., Riddle, L., Ferrara, N., King, G. L. & Smith, L. E. (1995) *Proc. Natl. Acad. Sci. USA* **92**, 10457–10461.
14. Smith, L. E., Wesolowski, E., McLellan, A., Kostyk, S. K., D'Amato, R., Sullivan, R. & D'Amore, P. A. (1994) *Invest. Ophthalmol. Visual Sci.* **35**, 101–111.
15. Takagi, H., King, G. L. & Aiello, L. P. (1996) *Diabetes* **45**, 1016–1023.
16. Jiang, Z. Y., Lin, Y. W., Clemont, A., Feener, E. P., Hein, K. D., Igarashi, M., Yamauchi, T., White, M. F. & King, G. L. (1999) *J. Clin. Invest.* **104**, 447–457.
17. King, G. L., Goodman, A. D., Buzney, S., Moses, A. & Kahn, C. R. (1985) *J. Clin. Invest.* **75**, 1028–1036.
18. Uberall, F., Giselbrecht, S., Hellbert, K., Fresser, F., Bauer, B., Gschwendt, M., Grunicke, H. H. & Baier, G. (1997) *J. Biol. Chem.* **272**, 4072–4078.
19. Orr, J. W. & Newton, A. C. (1994) *J. Biol. Chem.* **269**, 27715–27718.
20. Li, W., Yu, J. C., Shin, D. Y. & Pierce, J. H. (1995) *J. Biol. Chem.* **270**, 8311–8318.
21. Uberall, F., Hellbert, K., Kampf, S., Maly, K., Villunger, A., Spitaler, M., Mwanjewe, J., Baier-Bitterlich, G., Baier, G. & Grunicke, H. H. (1999) *J. Cell Biol.* **144**, 413–425.
22. He, T. C., Zhou, S., da Costa, L. T., Yu, J., Kinzler, K. W. & Vogelstein, B. (1998) *Proc. Natl. Acad. Sci. USA* **95**, 2509–2514.
23. Thieme, H., Aiello, L. P., Takagi, H., Ferrara, N. & King, G. L. (1995) *Diabetes* **44**, 98–103.
24. Morishita, R., Gibbons, G. H., Horiuchi, M., Ellison, K. E., Nakama, M., Zhang, L., Kaneda, Y., Ogihara, T. & Dzau, V. J. (1995) *Proc. Natl. Acad. Sci. USA* **92**, 5855–5859.
25. Sakamoto, T., Ishibashi, T., Kimura, H., Yoshikawa, H., Spee, C., Harris, M. S., Hinton, D. R. & Ryan, S. J. (1995) *Invest. Ophthalmol. Visual Sci.* **36**, 1076–1083.
26. Ishii, H., Jirousek, M. R., Koya, D., Takagi, C., Xia, P., Clermont, A., Bursell, S. E., Kern, T. S., Ballas, L. M., Heath, W. F., *et al.* (1996) *Science* **272**, 728–731.
27. Kaelin, W. G. (1999) *BioEssays* **21**, 950–958.
28. Fields, A. P., Pettit, G. R. & May, W. S. (1988) *J. Biol. Chem.* **263**, 8253–8260.
29. Connell-Crowley, L., Harper, J. W. & Goodrich, D. W. (1997) *Mol. Biol. Cell* **8**, 287–301.
30. Zarkowska, T. & Mittnacht, S. (1997) *J. Biol. Chem.* **272**, 12738–12746.
31. Brown, V. D., Phillips, R. A. & Gallie, B. L. (1999) *Mol. Cell. Biol.* **19**, 3246–3256.
32. Knudsen, E. S. & Wang, J. Y. (1997) *Mol. Cell. Biol.* **17**, 5771–5783.