



DIGITAL ACCESS TO
SCHOLARSHIP AT HARVARD
DASH.HARVARD.EDU



HARVARD LIBRARY
Office for Scholarly Communication

Joint Coupling of Awake EEG Frequency Activity and MRI Gray Matter Volumes in the Psychosis Dimension: A BSNIP Study

The Harvard community has made this article openly available. [Please share](#) how this access benefits you. Your story matters

Citation	Soh, Pauline, Balaji Narayanan, Sabin Khadka, Vince D. Calhoun, Matcheri S. Keshavan, Carol A. Tamminga, John A. Sweeney, Brett A. Clementz, and Godfrey D. Pearlson. 2015. "Joint Coupling of Awake EEG Frequency Activity and MRI Gray Matter Volumes in the Psychosis Dimension: A BSNIP Study." <i>Frontiers in Psychiatry</i> 6 (1): 162. doi:10.3389/fpsy.2015.00162. http://dx.doi.org/10.3389/fpsy.2015.00162 .
Published Version	doi:10.3389/fpsy.2015.00162
Citable link	http://nrs.harvard.edu/urn-3:HUL.InstRepos:23845124
Terms of Use	This article was downloaded from Harvard University's DASH repository, and is made available under the terms and conditions applicable to Other Posted Material, as set forth at http://nrs.harvard.edu/urn-3:HUL.InstRepos:dash.current.terms-of-use#LAA



Joint Coupling of Awake EEG Frequency Activity and MRI Gray Matter Volumes in the Psychosis Dimension: A BSNIP Study

Pauline Soh¹, Balaji Narayanan^{1*}, Sabin Khadka¹, Vince D. Calhoun^{2,3,4},
Matcheri S. Keshavan⁵, Carol A. Tamminga⁶, John A. Sweeney⁶, Brett A. Clementz⁷
and Godfrey D. Pearson^{1,4,8}

¹Olin Neuropsychiatry Research Center, Institute of Living, Hartford, CT, USA, ²Department of Electrical and Computer Engineering, University of New Mexico, Albuquerque, NM, USA, ³The Mind Research Network, Albuquerque, NM, USA, ⁴Department of Psychiatry, Yale University School of Medicine, New Haven, CT, USA, ⁵Department of Psychiatry, Beth Israel Deaconess Medical Center, Harvard Medical School, Boston, MA, USA, ⁶Department of Psychiatry, University of Texas Southwestern Medical Center, Dallas, TX, USA, ⁷Department of Psychology, University of Georgia, Athens, GA, USA, ⁸Department of Neurobiology, Yale University School of Medicine, New Haven, CT, USA

OPEN ACCESS

Edited by:

Blazej Misiak,
Wroclaw Medical University, Poland

Reviewed by:

Jeffrey Bedwell,
University of Central Florida, USA
Seung Suk Kang,
University of Minnesota, USA

*Correspondence:

Balaji Narayanan
balaji.narayanan@hhchealth.org,
balaji.naran@gmail.com

Specialty section:

This article was submitted to
Affective Disorders and
Psychosomatic Research,
a section of the journal
Frontiers in Psychiatry

Received: 19 August 2015

Accepted: 26 October 2015

Published: 09 November 2015

Citation:

Soh P, Narayanan B, Khadka S,
Calhoun VD, Keshavan MS,
Tamminga CA, Sweeney JA,
Clementz BA and Pearson GD
(2015) Joint Coupling of Awake EEG
Frequency Activity and MRI Gray
Matter Volumes in the Psychosis
Dimension: A BSNIP Study.
Front. Psychiatry 6:162.
doi: 10.3389/fpsy.2015.00162

Background: Many studies have examined either electroencephalogram (EEG) frequency activity or gray matter volumes (GMV) in various psychoses [including schizophrenia (SZ), schizoaffective (SZA), and psychotic bipolar disorder (PBP)]. Prior work demonstrated similar EEG and gray matter abnormalities in both SZ and PBP. Integrating EEG and GMV and jointly analyzing the combined data fully elucidates the linkage between the two and may provide better biomarker- or endophenotype-specificity for a particular illness. Joint exploratory investigations of EEG and GMV are scarce in the literature and the relationship between the two in psychosis is even less explored. We investigated a joint multivariate model to test whether the linear relationship or linkage between awake EEG (AEEG) frequency activity and GMV is abnormal across the psychosis dimension and if such effects are also present in first-degree relatives.

Methods: We assessed 607 subjects comprising 264 probands [105 SZ, 72 SZA, and 87 PBP], 233 of their first degree relatives [82 SZ relatives (SZR), 71 SZA relatives (SZAR), and 80 PBP relatives (PBPR)], and 110 healthy comparison subjects (HC). All subjects underwent structural MRI (sMRI) and EEG scans. Frequency activity and voxel-based morphometric GMV were derived from EEG and sMRI data, respectively. Seven AEEG frequency and gray matter components were extracted using Joint independent component analysis (jICA). The loading coefficients (LC) were examined for group differences using analysis of covariance. Further, the LCs were correlated with psychopathology scores to identify relationship with clinical symptoms.

Results: Joint ICA revealed a single component differentiating SZ from HC ($p < 0.006$), comprising increased posterior alpha activity associated with decreased volume in inferior parietal lobe, supramarginal, parahippocampal gyrus, middle frontal, inferior temporal gyri, and increased volume of uncus and culmen. No components were aberrant

in either PBP or SZA or any relative group. No significant association was identified with clinical symptom measures.

Conclusion: Our data suggest that a joint EEG and GMV model yielded a biomarker specific to SZ, not abnormal in PBP or SZA. Alpha activity was related to both increased and decreased volume in different cortical structures. Additionally, the joint model failed to identify endophenotypes across psychotic disorders.

Keywords: schizophrenia, schizoaffective, psychotic bipolar, joint independent component analysis, endophenotypes, biomarkers, EEG, gray matter

INTRODUCTION

Several independent electroencephalogram (EEG) and neuroimaging (both functional and structural) studies have been conducted in schizophrenia (SZ), schizoaffective (SZA), and psychotic bipolar disorder (PBP) (1, 2) with the aim of finding shared and specific biomarkers for these disorders. Evidence indicates considerable overlap in cognitive, structural, cortical oscillatory deficits, functional abnormalities (3, 4), and genetic sources (5, 6) across psychotic disorders, but these biomarkers have typically each been studied in isolation. Further, while most have been shown to be abnormal in relatives of affected patients, few studies have compared deficits in relatives of probands with different disorders (7, 8). A more comprehensive approach to this problem would involve studying multiple disorders and multiple biomarkers simultaneously (data-fusion) in both probands and their relatives. A data-fusion type approach combines two data modalities by capitalizing complementary and unique modality-specific information (for example, functional and structural) in an integrated model that can identify within-subject covarying patterns (linkage) across modalities (9). Such a linkage serves in identifying disease-specific biomarkers or endophenotypic markers to advance gene discovery and provide improved and disease-specific treatment (10).

For the past two decades, brain imaging and neurophysiological techniques elucidated the complex topography of neural systems and cognitive alterations in psychotic illnesses (11, 12). Structural magnetic resonance imaging (sMRI) and EEG capture spatial and temporal neural information that have characterized spatial brain network and neurophysiological abnormalities in mental diseases. Previous sMRI studies revealed gray matter volume (GMV) abnormalities especially in the frontotemporal regions of SZ patients (4, 13, 14). Eyes-closed and eyes-awake (resting-state) EEG (AEEG) studies found augmented low frequency activity in delta, theta, and alpha bands in SZ and bipolar patients (15–17). Functional correlates of oscillatory activity revealed theta oscillations to play an important role in hippocampus and prefrontal cortex (18, 19) interactions, while alpha oscillations originating in thalamocortical neuronal interactions are associated with default mode network (20) and various cortical regions (18, 21–23). One prior study reported alterations in cortical thickness related to abnormal oscillations in SZ (24); nonetheless, the biological changes accompanying the oscillatory abnormalities in psychosis are unclear and not well characterized. The data analyzed in the current study have previously been examined independently for

endophenotypes and similarities in neurobiological abnormality across psychotic disorders (4, 16, 25), but the current study integrates a subset of EEG and sMRI data in multivariate analysis to examine the joint relationship between the two in psychosis.

Univariate methods that examine data from a single imaging modality based on a separate model are indeed useful in helping us to understand brain function; however, an ideal alternative is to construct a model encompassing two or more imaging modalities in a joint analysis with the potential to identify information, which is missed by separate analysis. A whole brain univariate correlation of sMRI data with EEG activity in various frequency bands is limited in sensitivity due to numerous multiple comparison procedures (>200 K voxels and multiple EEG frequencies). Despite a generally scarce literature on anatomical abnormalities associated with EEG activity in psychosis, a few prior studies have identified EEG correlates of brain volumes based on *a priori* regional hypotheses (restricted sets of brain regions) rather than whole brain analysis (26, 27). In particular, ventricular enlargement was related to aberrant alpha activity in SZ patients (27). Another study reported no association between alpha rhythm and glucose metabolic rate in occipital cortices and thalamic regions in SZ (28).

Electroencephalogram oscillatory abnormalities have been reported (29, 30) both in low frequency ranges (including delta, theta, and alpha) and in high frequency ranges (comprising beta and gamma). Increased low frequency activity was found in psychosis (31). Abnormal beta activity was demonstrated in both SZ and bipolar disorder patients and their relatives (16, 32, 33). Very few studies have examined gamma activity in psychosis, primarily due to methodological limitations in combatting high frequency noise that overlaps with gamma activity. To our knowledge, only two studies (32, 34) have examined resting-state gamma activity. One failed to find evidence for gamma abnormalities in either SZ patients or their family members (34), while the other study including SZ probands and relatives found excessive gamma activity in frontotemporal regions (32) suggesting that spectral abnormalities serve as indicators of genetic liability (endophenotypes) for SZ. Finally, increased baseline gamma (35) (in the pre-stimulus period) in SZ was revealed during auditory steady-state stimulation. EEG alpha findings in psychosis have been inconclusive (29) with reports of increased (36–39), decreased (40, 41), and no (42, 43) alpha abnormalities in psychotic patients, perhaps due to methodological variations across these studies. A recent BSNIP EEG study displayed increased alpha in both SZ and PBP patients (16). Gray matter anomalies in the form of volumetric

reduction in temporal (44–46) and parietal lobe regions (47, 48) and in cerebellum (49) have been reported in psychosis. Gray matter abnormalities in SZA disorder resembled those of SZ (4, 50). Volumetric findings in bipolar disorder have been variable with inconsistencies across several brain regions (51). A detailed review of structural MRI anomalies in SZ is presented in Ref. (52).

Within a highly networked brain, it is reasonable to expect changes in neuroelectric brain activity in one region, may be related to alterations of brain morphometry in different regions. Importantly, such a model has the potential to reveal sources of EEG alterations in brain regions that have an indirect role in the source activity, but may not be a direct generator of the EEG activity. Currently, multimodal fusion has been utilized in studies to analyze multiple data sets as it gives important decompositions and at the same time, reduces the assumptions of the data model. Examples include multimodal canonical correlation analysis (53, 54) and joint independent component analysis (jICA) (55, 56). Most multimodal studies focused on combining sMRI with fMRI (55); sMRI with evoked event-related potential (57) but to our knowledge, no report exists on integrating awake EEG (AEEG) and sMRI to examine their coupling in psychosis. The use of EEG, which allows one to measure neural activity, together with sMRI, to assess the anatomical source of activation that can provide meaningful information regarding brain structure–neural oscillation relationship and uncover underlying pathophysiology in neuropsychiatric disorders.

The integration of EEG and sMRI can be modeled by multivariate jICA, which allows one to simultaneously examine data from two or more modalities obtained from the same group of subjects by isolating the decomposed factors or source components, while permitting a shared mixing parameter (55) between the two modalities. This type of cross-information approach leverages both EEG and sMRI to enable good temporal and spatial resolution. This is especially useful for disorders like SZ and bipolar disorder where one can investigate the link between structural and functional relationships which would ultimately lead to the development of biological markers in the aspects of diagnosis and treatment efficacy (58). In the current study, we utilize biomarkers derived from AEEG and sMRI in a joint model with the primary aim of identifying the linear interaction (association based on additive linear model) between the oscillatory activity and GMV disrupted in psychosis through empirical multivariate data decomposition. Another goal is to verify whether the integrated model provides better efficacy in serving as a psychosis specific biomarker or endophenotype or as a disease-specific marker yielding better separation from healthy comparison (HC) group (compared to separate EEG and GMV data models). To our knowledge this is the first study to compare joint linear interaction between EEG and gray matter abnormalities across psychosis dimension including SZ, SZA and PBP probands, and their respective relatives. We sought to identify the symptom relationship with the integrated biomarker model by correlating with the psychopathology scores. We conducted an exploratory study using an empirical data-driven strategy to jointly evaluate EEG and whole brain sMRI data to identify both neurophysiological and concurrently occurring gray matter abnormalities in psychosis.

MATERIALS AND METHODS

Participants

We analyzed data from 607 subjects recruited from the multisite Bipolar-Schizophrenia Network for Intermediate Phenotypes (B-SNIP) study [interested readers can refer to Ref. (2) for study details]. The participants comprised 110 HC subjects, 105 SZ probands, 87 PBP, 72 SZA probands, 82 relatives of SZ probands (SZR), 80 relatives of PBP probands (PBPR), 71 relatives of SZA probands (SZAR). The current sample ($N=607$) was selected from all participants with both AEEG [from $N=1091$ (16)] and sMRI (4) data, a subset of B-SNIP cohort comprising $N\sim 2441$ subjects. Groups were not matched on age, gender, and ethnicity. See **Table 1** for demographic information and clinical characteristics for subjects. The BSNIP study protocol was approved by the institutional review board at Hartford Hospital (Hartford), University of Texas Southwestern medical school (Dallas), University of Maryland (Baltimore), University of Chicago (Chicago), Wayne state university (Detroit), and Harvard University (Boston). All participants were explained about the BSNIP study procedure and a written informed consent approved by the institutional review board at each local site was obtained. Probands were confirmed to have a DSM-IV diagnosis of SZ, PBP, and or SZA disorder by trained and reliable clinicians using the Structured Clinical Interview for DSM-IV (SCID) Axis I Disorders. Probands were recruited from inpatient and outpatient settings at the five centers (Baltimore, Boston/Detroit, Chicago, Dallas, and Hartford) comprising the collaborative B-SNIP study via advertisements, online postings, and referral by word of mouth. Non-psychotic relatives group included in this sample comprised relatives with psychosis spectrum personality disorder (cluster A) and those with no lifetime psychiatric diagnoses (unaffected) and non-psychotic axis I (e.g., mood, anxiety) or axis II (cluster B and C disorder) diagnoses. Exclusions included presence of neurological illness, substance abuse (within 1 month), or dependence (within 6 months) or any prior extensive history of drug dependence (DSM-IV). Probands were on stable medication doses (see **Table 2** for detailed medication information) for at least 4 weeks and chronic antipsychotic treatment for the duration of their illnesses, whereas HCs and relatives were free of Axis 1 psychopathology. Also, probands were assessed using the Positive and Negative Syndrome Scale [PANSS (59)], the Montgomery-Åsberg Depression Rating Scale [MADRS (60)], the Young Mania Rating Scale [YMRS (61)], and the Schizo-Bipolar Scale [SBS (1)]. Functional status was assessed with the Birchwood Functioning Scale (62).

EEG Data Acquisition and Processing

EEG data were acquired with an electrode cap fitted with 66 electrodes, conforming to scalp locations according to the International 10–10 system. Instructions were given to participants to sit relaxed in a straight-backed chair with eyes open and remain still while looking at a fixation cross on a monitor. Identical EEG equipment (Neuroscan Compumedics, Charlotte, NC, USA) standardized according to the same guidelines was used at all the sites. All electrodes were adjusted for impedance $\leq 5\text{ k}\Omega$. Electrooculography (EOG) was used to monitor eye movement horizontally with electrodes next to

TABLE 1 | Clinical and demographic information for the study sample.

	HC	SZ	PBP	SZA	SZR	PBPR	SZAR	Statistic	p Value
Subjects (No.)	110	105	87	72	82	80	71		
Mean age ^a (years) (SD)	38.34 (12.36)	33.03 (11.7)	35.51 (13.25)	34.47 (11.35)	44.87 (15.19)	42.66 (14.9)	44.31 (14.74)	$F_{6,600} = 11.42$	<0.001
Sex ^b (male/ female)	49/61	72/33	32/55	35/37	29/53	26/54	28/43	$\chi^2_6 = 35.37$	<<0.0001
Baltimore	17	31	27	16	19	26	16	–	–
Boston ^c	14	16	12	2	9	7	3	–	–
Chicago	16	14	17	9	9	11	5	–	–
Dallas	21	8	4	8	3	1	9	–	–
Detroit ^c	6	3	1	0	4	2	3	–	–
Hartford	36	33	26	37	38	33	35	–	–
Group-by-site effects ^d	–	–	–	–	–	–	–	$\chi^2_{24} = 59.84$	<<0.001
Mean epochs (SD)	111.26 (35.12)	115.96 (35.35)	113.62 (37.93)	111.07 (34.57)	107.48 (30.71)	118.06 (38.3)	110.39 (34.41)	$F_{6,600} = 0.87$	0.52
Ethnicity ^e								$\chi^2_{24} = 65.97$	<<0.0001
Caucasian	50	46	59	36	48	60	50		
African-American	37	47	13	18	22	9	15		
Hispanic	11	5	8	12	8	8	3		
Asian	5	0	2	0	2	0	1		
Mixed	7	7	5	6	2	3	2		
CPZ ^f equivalents		484.9 (386.78)	307.9 (269.34)	465.38 (357.7)	203.7 (188.82)	72.9	346.29 (278.2)		
PANSS-positive									
Range		7–31	7–23	7–32	–	–	–		
Mean (SD)		16.34 (5.46)	11.76 (4.1)	17.24 (5.38)	–	–	–		
PANSS-negative									
Range		7–33	7–30	7–30	–	–	–		
Mean (SD)		15.4 (5.53)	11.67 (4.06)	15.22 (5.04)	–	–	–		
PANSS-general									
Mean (SD)		30.64 (8.44)	26.98 (7.26)	33.29 (8.6)	–	–	–		
SBS									
Mean (SD)		7.88 (1.1)	1.47 (1.29)	5.11 (1.44)	–	–	–		
YMRS score									
Mean (SD)		5.66 (5.39)	5.13 (5.9)	8.3 (6.68)	–	–	–		
MADRS score									
Mean (SD)		8.88 (8.08)	10.04 (9.79)	14.94 (10.12)	–	–	–		

^aSZ probands <HC group.

^bDisproportionate number of males in probands and disproportionate number of females in psychotic bipolar probands.

^cSince identical EEG equipment was used to collect data at both Boston and Detroit sites, which were managed by the same investigator (two sites were merged in the study). Site was used as a factor with five levels in the statistical analysis.

^dPatients, relatives, and healthy controls were not uniformly distributed across data collection site.

^eRace was not balanced across groups, particularly there were more Caucasians.

^fCPZ was available for only one relative of PBP.

CPZ, chlorpromazine; HC, healthy comparison; PANSS, Positive and Negative Syndrome Scale; PBP, psychotic bipolar disorder; PBPR, relatives of psychotic bipolar probands; SBS, Schizo-Bipolar Scale; SZ, schizophrenia; SZA, schizoaffective; SZAR, relatives of schizoaffective probands; SZR, relatives of schizophrenia probands.

both eyes, and vertically with electrodes above and below the right eye. EEG signals were digitized at the rate of 1000 Hz with 0.5 Hz low-frequency and 100 Hz high-frequency filters. Raw EEG data were visually inspected to identify bad sensors and were fixed by applying a spherical spline interpolation (very few subjects' data were interpolated such that each had no $\geq 8\%$ of bad electrodes); refer to Ref. (16) for the data processing details and see **Figure 1**. Blink artifacts were corrected using independent component analysis (63). EEG data were also denoised for EKG/EMG artifacts using ICA based artifact cleaning methods (64–67). The components were screened

both visually and using kurtosis and spectral deviation metrics for identifying and removing sources of EKG/EMG artifacts. Individual EEG trials/epochs were generated by segmenting the continuous data into 50% overlapping segments of 2.048 s, followed by baseline correction to the mean value of the entire trial. Trials containing extreme outliers (exceeding a 150 μV threshold), improbable distribution (≥ 3.25 SD from mean), or kurtosis behavior (3.75 SD from mean) or abnormal spectra were discarded. Further pruning was done by frequency-transforming data using a Hamming window and subsequently rejecting epochs that were (\pm) 4 SD from the mean spectral

TABLE 2 | Talairach coordinates for brain regions associated with alpha activity derived from joint independent component analysis.

Regions	Brodmann	L random effects: Max Z (x, y, z)	R random effects: Max Z (x, y, z)
Positive			
Culmen	*	4.1 (0, -50, -10)	3.6 (3, -50, -8)
Uncus	28	–	3.7 (19, -6, -25)
Negative			
Parahippocampal gyrus	28, 34	3.26 (-18, -10, -18)	4.2 (40, -38, 36)
Supramarginal gyrus	40	3.1 (-36, 17, 21)	–
Inferior frontal gyrus	*	3.99 (-33, 34, -16)	3.1 (33, 33, 3)
Middle frontal gyrus	*	3.5 (-36, 26, 29)	3.3 (42, 18, 38)
Superior frontal gyrus	*	3.4 (-27, 46, 17)	–
Inferior parietal lobule	40	–	3.6 (43, -37, 39)
Inferior temporal gyrus	20	3.6 (-56, -26, -20)	–

The regions were identified in the gray matter component using a threshold of $|Z| \geq 3$. *denotes Brodmann region not defined.

amplitude at all frequency points between 0.5 and 50 Hz. Finally, EEG data were visually inspected by trained research personnel to ensure valid brain EEG patterns were retained for subsequent analyses.

Structural Magnetic Resonance Imaging Acquisition and Voxel-Based Morphometry Procedures

All MRI images were collected with 3-T scanners (GE Signa, Philips Achieva, Siemens Allegra, and Siemens Trio) as described elsewhere (4). High-resolution isotropic T1-weighted MP-RAGE sequences (TR = 6.7 ms, TE = 3.1 ms, 8° flip angle, 256 × 240 matrix size, total scan duration = 10:52.6 min, 170 sagittal slices, 1 mm slice thickness, 1 mm × 1 mm × 1.2 mm voxel resolution) were acquired according to the Alzheimer's Disease Neuroimaging Initiative (ADNI) protocol.¹ Foam pads and ear plugs were given to minimize head motion and scanner noise.

VBM

Structural MR images were processed using the VBM8 toolbox² as implemented in SPM8 with default settings (see **Figure 1**). The following steps were conducted for the T1-weighted MP-RAGE images: reorientation, bias-correction, tissue classification, spatial normalization to Montreal Neurological Image (MNI) space followed by high-dimensional non-linear diffeomorphic anatomical registration through exponentiated lie algebra (DARTEL) normalization that incorporates correction for individual brain size (68). The optimally processed and normalized gray matter segments were modulated by the amount of warping to maintain the total GMV (69) and finally smoothed with an 8 mm × 8 mm × 8 mm isotropic Gaussian kernel. Voxels within a predefined gray matter mask (absolute threshold = 0.3) were selected and used for the subsequent jICA.

¹<http://adni.loni.usc.edu/>

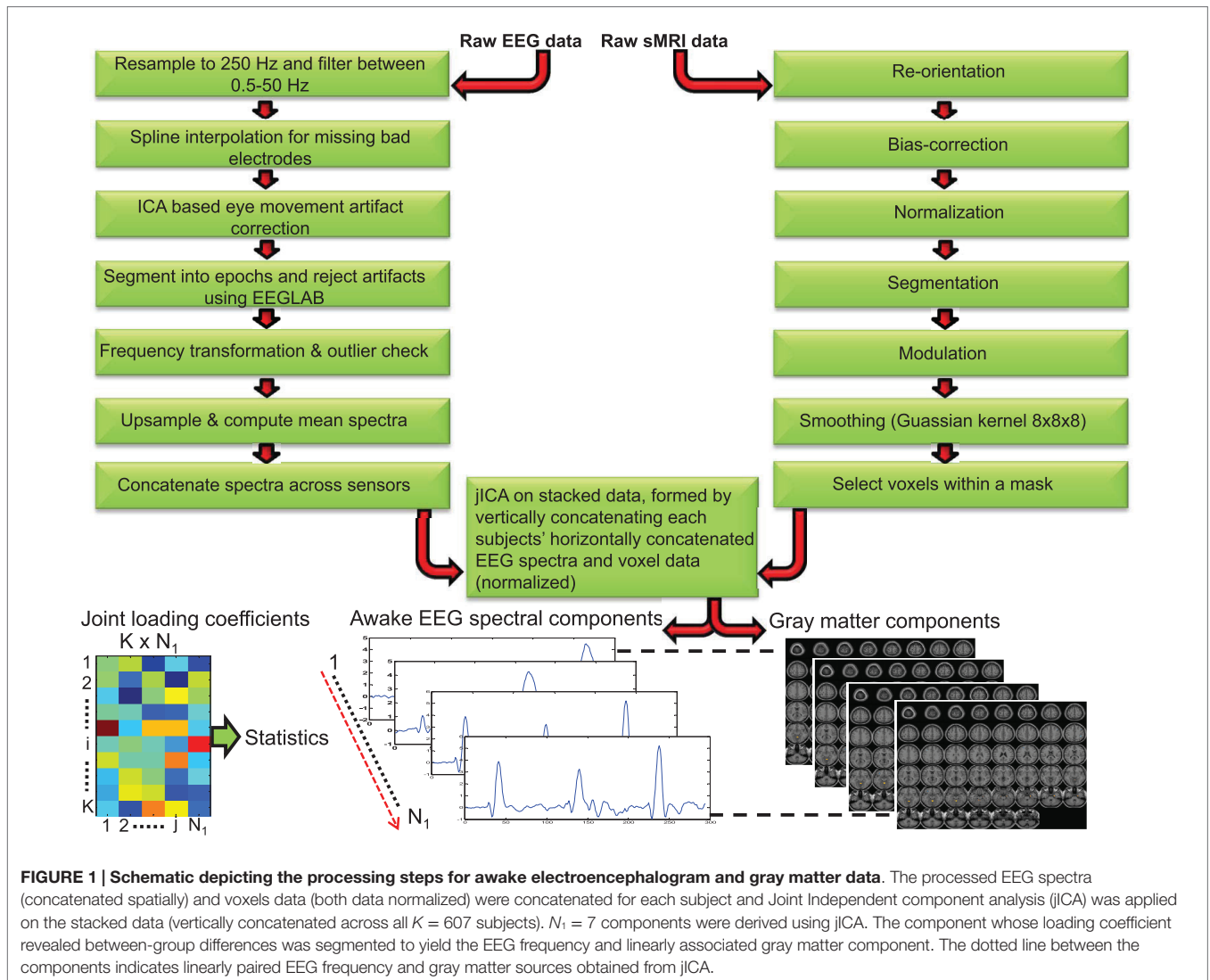
²<http://dbm.neuro.uni-jena.de/vbm>

Joint Independent Component Analysis

Typical univariate studies quantify the EEG power and volumes in several *a priori* defined frequency bands and brain regions of interest respectively, and evaluate the correlations between the two. This approach is limited by the numerous statistical corrections across several frequency bands, numerous EEG leads and brain regions of interest to eliminate false positives. In this study, we analyzed the whole EEG oscillation spectrum spanning (between 1.5 and 50 Hz) from low to high frequency in conjunction with whole-brain gray matter data. The jICA decomposes the data into components that are essentially spectrally filtered EEG data covarying with regional volumes (i.e., each component represents a spectral activity within a frequency band and linearly related regional brain volumes). The EEG and sMRI data were analyzed by applying jICA (9, 55) in the fusion ICA Toolbox.³ jICA is a multivariate statistical approach that extracts hidden factors by exploiting the co-variation across two data modalities with high dimensionality, while simultaneously maximizing the statistical independence in the factors. The loading coefficient (LC) of the hidden factors captures the linear linkage between the modalities. The linkage parameter and associated hidden source components are derived from the data empirically (data-driven). One advantage of the multivariate approach is the number of statistical corrections is limited to the few hidden factors as opposed to correcting for all the voxels (>200,000) in a univariate model. In simple terms $x = AS$, where the joint independent sources (S) are linearly mixed by a common mixing (loading) parameter (A) to achieve the data matrix $x = [x^{\text{EEG}}, x^{\text{sMRI}}]$. To eliminate bias in the joint analysis resulting from the high dimension of the GMV data (comprises approximately >200 K voxels), a balanced representation of the data from both modalities was achieved by interpolating (upsampling) the EEG frequency activity for each trial and averaging the trials to yield the mean frequency amplitude for each channel (3178 frequency points/channel between 1.5 and 50 Hz). The multichannel EEG data was spatially concatenated to form a single vector of $(1 \times 203392 = 64 \times 3167)$, which in turn was transformed to subject × frequency data matrix ($x^{\text{EEG}} = 607 \times 203392$). Similarly, the GMV data of each subject was converted to a single spatial vector (1×202145 voxels) and subsequently transformed to form a subject × spatial GMV data matrix ($x^{\text{sMRI}} = 607 \times 202145$). The EEG and GMV data matrices were normalized by respective scaling factors such that the sums of squares were matched between the two modalities, while maintaining the relative amplitude of the frequency and GMV data. The final data matrix for jICA was obtained by concatenating the EEG and GMV (see **Figure 1**) data matrices [$x = (x^{\text{EEG}}, x^{\text{sMRI}})$].

It is not straightforward to estimate the model order for the combined EEG and GMV data; hence we adopted a strategy employed in prior jICA study (70). An initial estimate of the number of independent components was determined using minimum description length (MDL) criteria (71) for EEG and GMV data separately. Model order is an estimate (approximate) of the low order components that represent the patterns contributing to the data. For ICA based studies model order is computed based

³<http://mialab.mrn.org/software>



on stability criterion (72). ICA is repeatedly applied on the data with random initializations and the resulting components are grouped into clusters that are assessed by computing a stability index [ICASSO (72, 73)]. Using the initial MDL computed model order as reference, multiple runs of iICA was evaluated to identify stable EEG frequency and gray matter components. With a high model order (>10), the EEG frequency components disintegrated around the dominant modes. The final model order was selected as 7 (with stability index ranging between 0.91 and 0.97) and iICA was evaluated using infomax ICA (74). Those components for which the LC yielded a significant group main effect were examined further. The LC captures the linear aggregate relationship between the EEG frequency activity and GMV measures derived from the two modalities. A higher component LC for a subject signifies increased contribution to the component. The constituents of the EEG frequency and gray matter component were identified by converting the component to Z-scores and applying a threshold $|Z| \geq 3$. The robustness of the component was tested by evaluating iICA in leave one subject out sampling

procedure ($N = 607$ runs) and computing the Pearson correlation between the component obtained in each run and the component extracted from the original data.

Statistical Data Analysis

Joint ICA Analysis

jICA identified 7 EEG–GMV joint components, whose loading or mixing parameters were statistically assessed for group difference. First, all probands (SZ + SZA + PBP) were clustered as a group and compared against HC, followed up with a one-way analysis of covariance (SPSS v17.0 Statistical Package for the Social Science, Chicago, IL, USA) with three between subject factors (group: SZ, SZA, PBP, SZR, SZAR, PBPR and HC; sex: male/female; data collection site: five levels). Age and number of EEG trials were used as covariates. The p -values for the components were adjusted to correct for multiple comparisons ($p < 0.05/7$). Significant main effect was followed up with *post hoc* tests to assess pair-wise group comparisons adjusted using Bonferroni correction. Separate regression (accounting for age, sex, site, and

number of EEG trials) was carried out to examine the associations between the loading parameters of the significant component and clinical variables including PANSS, MADRS, YMRS, SBS scores, and chlorpromazine equivalents (75) in probands. Additionally, medication effect on loading parameters were examined using multiple regression by taking into account simultaneous medication usage, modeled as separate dichotomous discrete variable for use or no use of antipsychotics, antidepressants, and mood stabilizers. This analysis was restricted to only those probands in which the loading parameters characterized abnormality.

RESULTS

Joint EEG–GMV Components

Of the seven components derived from these data by jICA (IC1–7 explaining ~88% of variance), only one component's loading (IC5 with ~16% explained variance) showed significant main effect ($F_{1,365} = 9.96, p < 0.0017$) in the initial analysis contrasting psychosis (SZ + SZA + PBP) vs. HC. IC5 also showed significant group (conventional DSM group comparisons) main effect, ($F_{6,593} = 2.99, p < 0.006$), indicating that the magnitude of linear linkage between EEG and GMV in that component was significantly different across DSM groups. *Post hoc* tests revealed that the loading for IC5 was significantly higher in SZ probands compared to HC ($p < 0.004$ after Bonferroni correction for multiple group comparisons; see **Figure 2**), reflecting that strength of the coupling between EEG and GMV was increased in SZ compared to HC. No other proband groups or their relatives showed difference vs. HC. The dominant EEG activity and gray matter regions representing the component was identified by the applying a

threshold on the Z-scored component (similar to identifying outliers). The EEG feature comprising component IC5 was selected with a threshold $|Z| \geq 3$ (70, 76) [outliers that are 3 SD ($p < 0.01$) away from the mean], yielding slow alpha activity between 7.4 and 9.6 Hz and maximal (at Pz) in the posterior channels (**Figure 3**). The EEG frequency component is the waveform at the channel location (Pz) where the component was peaking. The associated topography was obtained by mapping the peak of each channel comprising IC5 in the alpha frequency range (7.5–10 Hz). The individual gray matter regions (**Figure 4**) contributing to IC5 are listed in **Table 3** with their Talairach coordinates and Z-scores. Increased posterior alpha was associated with lesser volume in parahippocampal gyrus, inferior temporal gyrus, left middle frontal gyrus, right inferior parietal lobule, and greater volume in culmen and uncus. Although the threshold used in this study is arbitrary, a high threshold results in fewer regions (small sized) associated with oscillatory activity, while a low threshold leads to false positives. The minimum cluster size for the gray matter region was chosen as 20 voxels; however, several of the identified regions comprised 53–482 voxels. Thus, we exercise caution on the findings as these are sensitive to several parameters including the threshold and voxel size. The component IC5 was robust with a stability index >0.9 from the leave-one-out analysis.

To evaluate the sensitivity of the jICA approach compared to mass univariate approach, we conducted simple regression between the maximal gray matter voxel and the peak amplitude of the EEG frequency component. The maximal voxel was located in supramarginal gyrus. The peak EEG frequency amplitude was at channel Pz at 8.6 Hz (within alpha band). The GMV and EEG frequency activity in the original subjects' data at these two maximal locations was correlated ($r = -0.16, p = 0.000064$) in the univariate analysis. This was the maximum correlation and the associated significance clearly does not overcome the threshold for multiple comparisons across 200 K voxels. Separate ICA was applied on EEG and GMV data and the component that best differentiated SZ probands from HC in each modality was back-reconstructed using the LCs and original data for each group including SZ and HC. The number of independent components for EEG and GMV data was 6 and 12, respectively. The best differentiating (SZ vs. HC) EEG component comprised theta activity (5.5–8.3 Hz), maximal at Cpz, while the best gray matter component comprised several regions including vermis, inferior parietal lobule, thalamus, and parts of frontal lobe including left and right inferior frontal gyrus. The back-reconstruction procedure was also applied to IC5 derived from the joint analysis and the distribution of the back-reconstructed component was compared between SZ and HC for the joint modality as well as for each modality independently using Renyi's information-theoretic divergence (77) criteria. Renyi's divergence is an inferential statistical distance metric that quantifies the difference between the distributions of two groups or classes (78). The divergence is evaluated using a non-parametric estimator. Greater divergence indicates a larger distance between the distribution of SZ and HC group back-reconstructed component. The statistic associated with Renyi's divergence was evaluated by re-running ($N = 500$ runs) the group back-reconstruction procedure with shuffled group

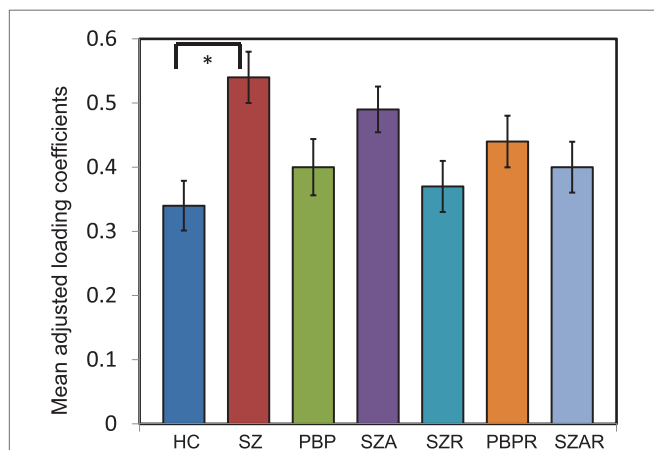
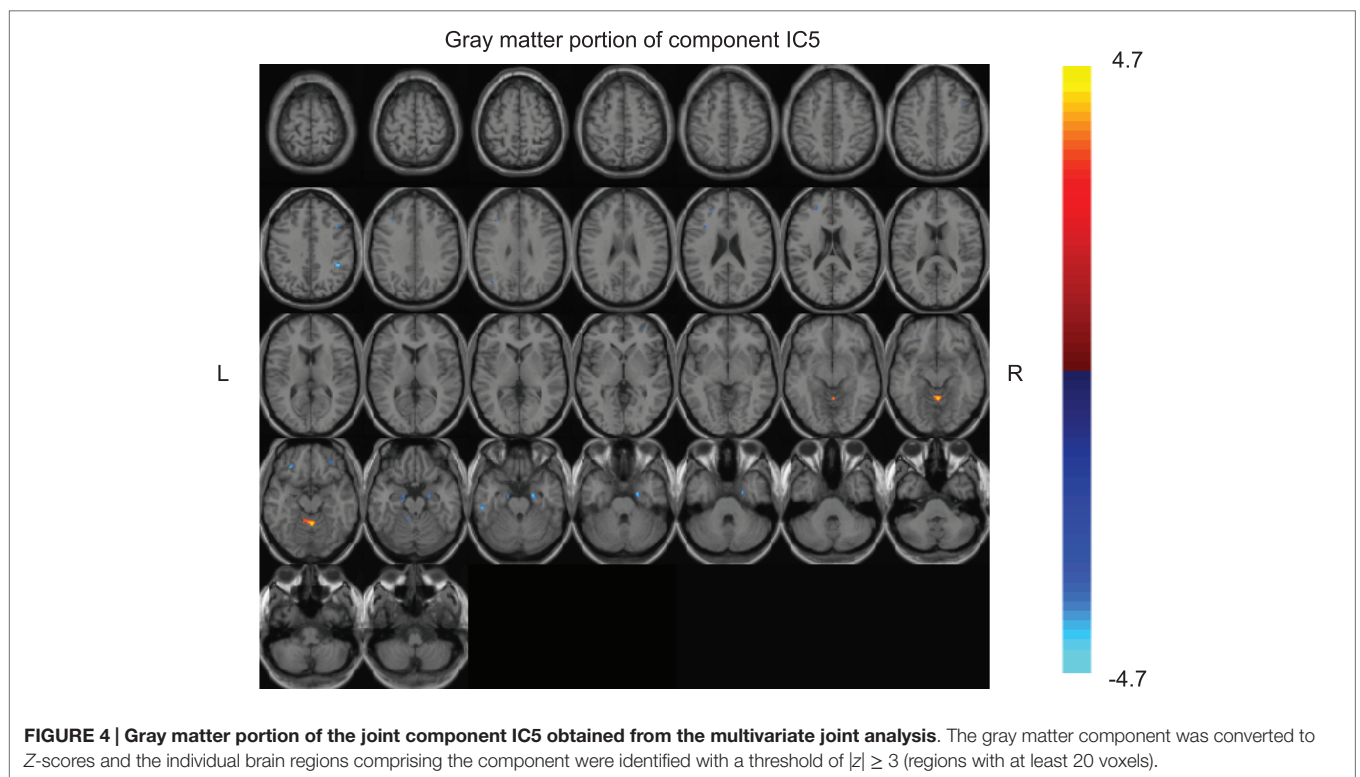
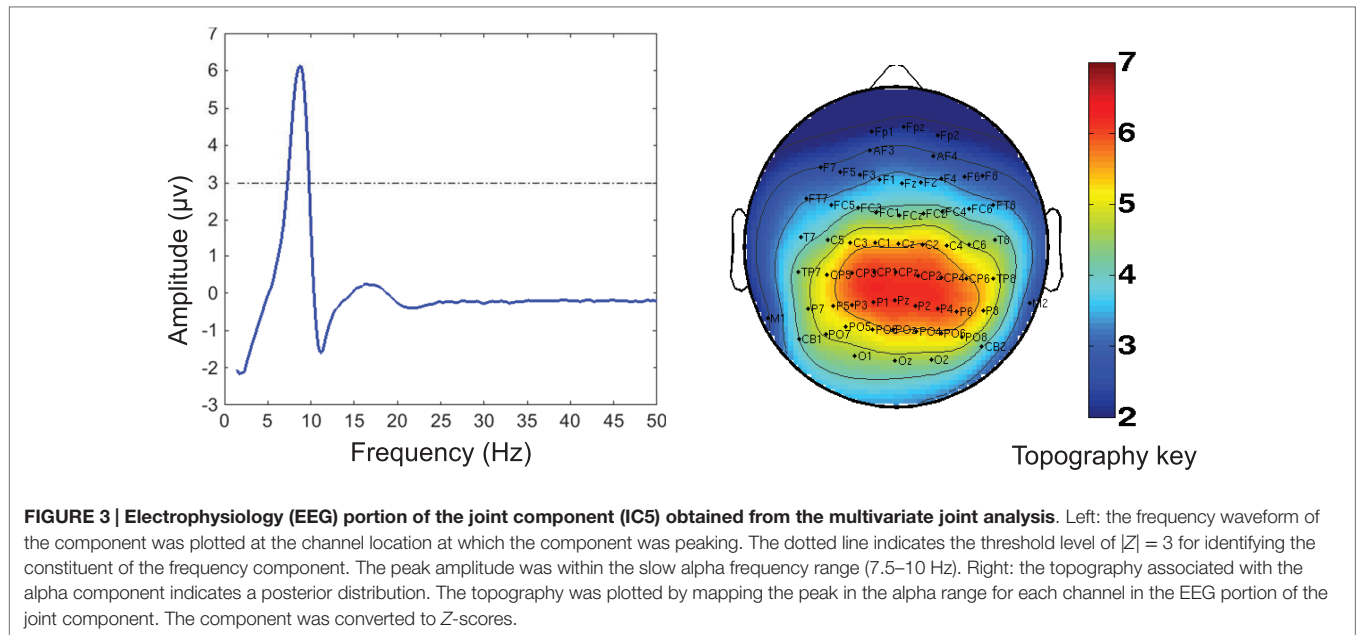


FIGURE 2 | Mean loading coefficient for the joint electrophysiology–gray matter component from joint independent component analysis.

The loading coefficients are plotted for joint component IC5. Analysis of covariance identified IC5 to show significant group main effect. *Post hoc* tests with Bonferroni correction identified the difference was prominent between schizophrenia (SZ) probands and healthy comparison (HC) subjects. No other proband groups or relatives of probands differed. *indicates significance at the $p < 0.05$ level. The loading coefficients were adjusted for discrete factors (sex, site) and covariates (age and number of epochs). Error bars represent SD.



labels and estimating the divergence for each run. The p value was computed as the ratio of the number of times the divergence exceeded the original value to the total number of runs. Thus, the p values for the joint model as well as the individual EEG and GMV model were $p = 0.11, 0.36,$ and $0.47,$ respectively. Although none of the divergence measures were significant, the joint model displayed a trend. The joint model revealed a greater

divergence (see **Figure 5**), or separation between the distribution of the component (IC5) for SZ vs. HC in comparison to the distribution contrast for the separate ICA models of EEG and GMV, indicating that the SZ abnormality is better differentiated by combining both EEG and GMV data.

No significant correlations were found between the loading parameters and PANSS, MADRS, YMRS, SBS scores and

TABLE 3 | Medication information for study sample.

	SZP (n = 105)		PBP (n = 87)		SZAP (n = 72)		SZR (n = 82)		PBPR (n = 80)		SZAR (n = 71)		HC (n = 110)	
	N	%	N	%	N	%	N	%	N	%	N	%	N	%
No medication taken	5	4.8	5	5.7	3	4.2	66	80.5	53	66.3	53	74.6	107	97.3
Not on psychotropic medications	8	7.6	23	26.4	10	13.9	80	97.6	78	97.5	2	2.8	0	0
On more than one psychotropic medications	12	11.4	2	2.3	5	6.9	0	0	0	0	0	0	0	0
Anticholinergic/antiparkinsonian	19	18.1	6	6.9	9	12.5	0	0	0	0	0	0	0	0
Antidepressant (any)	38	36.2	39	44.8	42	58.3	8	9.8	23	28.8	12	16.9	3	2.7
A. Tricyclic	0	0	3	3.4	3	4.2	0	0	2		2		0	0
B. MAO inhibitors	0	0	0	0	0	0	0	0	0	0	0	0	0	0
C. SSRI/SNRI	29	27.6	22	25.3	30	41.6	7	8.5	18	22.5	9	12.7	2	1.8
D. Miscellaneous	15	14.3	23	26.4	22	30.6	1	1.2	5	6.3	2	2.8	2	1.8
Antipsychotic (any)	97	92.4	64	73.6	63	87.5	2	2.4	2	2.5	2	2.8	0	0
A. First generation	21	0.2	5	5.7	12	16.7	0	0	0	0	0	0	0	0
B. Second generation	88	83.8	61	70.1	55	76.4	2	2.4	2	2.5	0	0	0	0
Anxiolytic/hypnotic	21	0.2	22	25.3	25	34.7	9	11	7	8.8	5	7	1	0.9
Mood stabilizer (any)	22	21	63	72.4	44	61.1	0	0	3	3.8	5	7	0	0
A. Lithium	7	6.7	25	28.7	12	16.7	0	0	1	1.3	0	0	0	0
B. Anticonvulsants	17	16.2	48	55.2	35	48.6	0	0	2	2.5	5	7	0	0
Miscellaneous, centrally active	2	1.9	5	5.7	5	6.9	0	0	0	0	1	1.4	0	0
Stimulants	3	2.9	10	11.4	2	2.8	1	1.2	2	2.5	2	2.8	0	0

HC, healthy comparison; PBP, psychotic bipolar disorder; PBPR, relatives of psychotic bipolar probands; SZ, schizophrenia; SZAP, schizoaffective; SZAR, relatives of schizoaffective probands; SZR, relatives of schizophrenia probands.

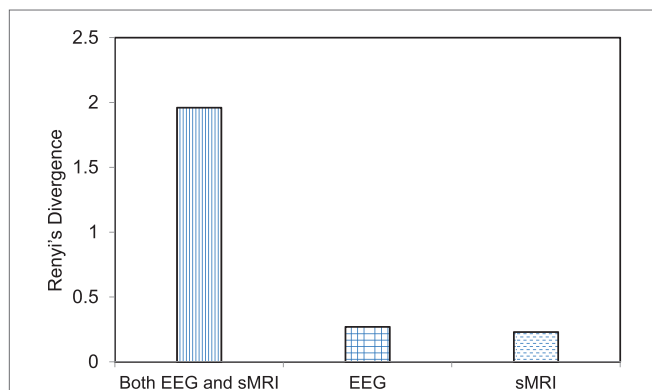


FIGURE 5 | Bar graph depicting the divergence score on the individual and combined feature space. The feature space includes joint electrophysiology (EEG) frequency activity and gray matter volumes (GMV) and either of the two separately. Renyi's divergence compares the distribution of the back-reconstructed component between schizophrenia probands and healthy comparison groups. The divergence is calculated for the component that best separated the two groups for the joint modality (EEG + sMRI) as well for each modality. The p values associated with the divergence measure for the joint modality as well as the individual EEG and GMV data were $p = 0.11$, 0.36 , and 0.45 , respectively. The statistic associated with the divergence was evaluated by re-running ($N = 500$) the back-reconstruction with shuffled group labels and evaluating the ratio of the number of times the divergence measure exceeded the original value to the total number of runs.

chlorpromazine equivalent dose. Further no association between the loading parameters and current use of antipsychotics, antidepressants and mood stabilizers were found among SZ probands. All the associations were non-significant at $p = 0.05$.

DISCUSSION

Numerous brain regions are compromised in the form of functional and structural abnormalities in psychosis (79–81). Prior studies have identified regions of gray matter abnormalities including the thalamus, cerebellum, temporal lobe and lateral frontal regions (4, 52, 82). EEG studies revealed low frequency delta, theta, and alpha abnormalities in SZ and PBP probands (16, 27, 29, 31, 38). The co-occurring abnormalities in both EEG and sMRI in psychosis are unknown and poorly defined. Multiple endophenotypes and/or biomarkers have been identified in psychosis, but it is not clear whether these are related to each other or independent; determining this might help clarify whether similar or separate biological mechanisms underlie the disorder. As a first step, we conducted an exploratory whole-brain multivariate jICA analysis to demonstrate the biological concomitants of oscillatory activity by integrating AEEG frequency activity and GMV from sMRI data across subjects in the B-SNIP study and examining their linear relationship that

models the shared between-modality relationships in psychosis. It should be emphasized that joint analysis (joint data fusion) only captures components that exhibit a shared relationship between the two modalities.

Joint Analysis Findings

Brain rhythms encompass wide range of putative functions including feature binding and information transfer between local and long range brain circuits (83). Similarly, gray matter brain regions and circuits serve multiple functions (e.g., cognitive and sensory processes) based on information processing governed by neurons, which are also primarily responsible for generating brain oscillations. Therefore, it is reasonable to expect some relationship between EEG oscillations and variations in brain structure. Moreover, generation and regulation of alpha oscillations can be linked to brain regions that are direct source generators, such as visual occipital cortex (84) or regions that are not direct source generators but interact with actual sources. The neurobiological mechanisms of brain oscillations are complex. We briefly discuss the plausible mechanisms underlying the generation of alpha oscillations. Alpha rhythms were initially observed in the occipital cortex (85); however, they have also been noted in somatosensory cortex (86), auditory cortex (87, 88), and the prefrontal cortex (89). There remains a considerable debate regarding the neural basis of alpha activity; however, studies have demonstrated that alpha oscillations are generated in neocortex, thalamo-cortical networks (90–92) as well as in hippocampus and reticular formation (84), presumably due to reciprocal inhibitory and excitatory neuronal interactions regulated by gap junctions in inhibitory interneurons (93). Generation of awake alpha is associated with the bursting of specialized class of high-threshold thalamocortical cells at depolarized membrane potentials (92). Recent evidence implicates muscarinic acetylcholine receptor or metabotropic glutamate receptor agonist on thalamic reticular and thalamocortical cells during alpha generation (92).

The present study identified slow alpha rhythm including the upper end of the theta frequency, whose origin has been associated with hippocampal spiking (94) and activation (95, 96), linked to memory formation. Prior MRI studies have demonstrated functional relationship between dorsal attention network, posterior network involving temporal-occipital regions and default mode network comprising superior, medial frontal gyrus and inferior parietal lobule (21) with alpha rhythm. Alpha activity was also correlated with activations in middle and inferior frontal gyri (22, 96–98), inferior parietal lobule (99), middle temporal gyrus, and cerebellum (20). Source localization analysis of alpha points to the role of posterior occipital lobe (100–102) where the visual cortical regions are located, extending to subcortical structures involving insula, cuneus, and precuneus (100, 103). Glutamate and GABAergic (excitatory and inhibitory) neurotransmitters play an important role in abnormal brain oscillations in SZ (104). Additionally, GMV loss in SZ can be partly attributed to reduced neuropil (105, 106), plausibly resulting from NMDA hypofunction that reduces the excitation of inhibitory GABAergic interneurons leading to disinhibition of glutamatergic pyramidal neurons (107). Thus, it is critical to study the relationship

between alpha activity and structural alterations to understand the disease pathology, which is feasible using joint analytic techniques. The current findings implicate several brain regions directly or indirectly associated (both positively and negatively, i.e., anti-correlated) with alpha oscillations. It is plausible that these regions are connected via white matter tracts and that this plays a joint role in their association with alpha oscillations. For example, alpha oscillations generated in the primary visual cortex are coordinated and distributed (108) to other regions including hippocampus, precuneus, inferior frontal, lingual and parahippocampal gyri, as these regions are connected via white matter pathways. Moreover, the white matter tracts (in fronto-temporo-occipital lobes) (109) assessed using fractional anisotropy (FA) is disturbed in SZ (110–112) and such disturbances have functional correlates (113). Abnormalities detected using diffusion tensor imaging based FA measures are indicative of disturbed organization/direction of white matter fibers or connections between brain regions.

The novel joint analysis reported in this study identified a single component, IC5 comprising alpha activity (with posterior topography) and gray matter regions including parahippocampal gyrus, left inferior temporal gyrus, left middle frontal gyrus, right supramarginal gyrus, and right inferior parietal lobule. This component was abnormal and specific to SZ probands, contrary to our hypothesis that EEG–GMV linkage is psychosis-specific. Also, no first-degree relatives in any proband groups exhibited abnormalities compared to HC. Prior studies documented both EEG (16) and GMV (4) abnormalities in relatives with other non-psychotic axis I disorders (mood and anxiety) and psychosis spectrum personality disorder (axis II), however in the current sample the size of cluster A subjects was too small ($N = 8$) to compare with probands and HC. The current findings indicate that the joint model including EEG and sMRI capture and characterize a SZ-specific abnormality. Additionally, the specificity in differentiating SZ from HC is higher (but not significant) compared to independent investigations of these data. Prior studies have shown certain degree of overlap in oscillatory and morphometric abnormalities in a direct contrast of both SZ and PBP (4, 16, 25), perhaps reflecting similar biological disturbances in both disorders, however our preliminary findings suggest that the linear relationship between alpha oscillations and co-occurring volumetric changes are unique to SZ and could be used in future investigations for elucidating the disease pathology.

Alpha Oscillations

Numerous EEG studies have shown SZ patients exhibiting abnormal resting neural oscillations across the entire spectrum including delta, theta, alpha, beta, and gamma frequency ranges (31, 32, 38, 114). SZ probands in the present study revealed an augmented alpha oscillatory activity, emphasized over the posterior region. Functional correlates of alpha include inhibition (115), default mode (21, 116), arousal (117), attention, and memory processes (84, 118). Prior studies have reported conflicting findings on the direction of alpha activity (increases or decreases) in SZ probands, perhaps due to the normalization of frequency band powers and differences in methodology and

sample characteristics such as age and psychotropic medications. Our data suggest that morphometric changes in the frontal, parietal, and temporal regions may subservise directly or indirectly as a biological substrate for altered EEG alpha activity. There are mixed reports of both positive and negative occipital lobe findings in SZ, probably due to different methodology and regions of interest definitions that could account for these inconsistencies. Another possible explanation is occipital abnormalities in SZ may be influenced by sex, although the present study did not find diagnostic group-by-sex interactions. Previous studies have reported few of the brain regions identified in this study as specific sources of EEG alpha activity (96, 100, 119). Further, the current findings are partially supported by previous EEG-fMRI studies that showed bold activation in middle frontal, inferior temporal gyrus, inferior parietal lobule and hippocampus, associated with EEG alpha rhythm (20, 21, 23, 96, 98, 99). The direction of the alpha-GMV relationship identified in this study is consistent with the inverse relationship between alpha and bold activation reported in Ref. (23).

sMRI Regions

Increased posterior alpha was associated with gray matter reduction in the left inferior temporal gyrus, left middle frontal gyrus, right supramarginal gyrus, right inferior parietal lobule and parahippocampal gyrus, brain regions previously implicated in the pathophysiology of SZ (11, 120–122). The inferior parietal lobule, which is a major component of the heteromodal association cortex (123), is crucial in sustaining attention to sensory modalities and thus, SZ probands may exhibit impairment of sensory integration to a certain degree (123, 124). Similarly, the supramarginal gyrus is efficient at integrating incoming sensory data and several studies have showed volume reduction in SZ (48, 125, 126). The middle frontal gyrus considered to be part of the dorsolateral prefrontal cortex, plays an important role in working memory known to be compromised in SZ patients (122). Additionally, a meta-analysis of 31 voxel-based morphometric studies showed reductions of GMV in the left middle frontal gyrus (127). Alpha was also associated with larger GMV in culmen and uncus regions. This finding is contrary to majority of prior reports, except for one study noting greater vermis volume in SZ (128). This result indicates that direction of volume changes is different in certain regions as opposed to the diffuse reductions noted in SZ. The primary regions related to alpha in this study were mainly associated with sensory and attention process, similar to the known functional correlates of alpha, suggesting that sensory integration and related processes are disturbed in SZ, a hallmark of the disease (129, 130).

Medication Effects

Prior reports support the influence of medications, in particular antipsychotics on both GMV (131, 132) and EEG oscillatory activity (133). Our study did not identify a significant relationship between the EEG-GMV linkage and chlorpromazine equivalents. We also tested for simultaneous medication use (modeled as binary variable, indicating current use/not using antipsychotic, antidepressants or mood stabilizers) effects on the linear

EEG-GMV relationship and observed no significant impact. We exercise caution on these negative results, as our study probands were prescribed multiple medications with varying durations and dosages. It is difficult to separate disease from medication effects, and this cannot be achieved by only examining probands. Although relatives were included in this study, no joint abnormality was observed in them; thus our ability to rule out medication induced effects is less definitive.

Advantages and Limitations

The strengths of our study encompassed the relatively large sample size and the ability to utilize the full array of the EEG sensors and entire frequency spectrum (1.5–50 Hz) along with high-dimensional sMRI data. The jICA allows one to investigate the relationship between EEG and GMV in statistically efficient way by decomposing the components on the feature space, and examining their shared dependence in patients, compared to the mass univariate analysis. The jICA approach assumes a common distribution for both EEG and sMRI joint sources across all subjects but with variations in their linear relationship. Limitations include unbalanced groups on demographic variables including age and sex, whose effects were controlled in the statistical model. Despite identifying a SZ-specific biomarker, the data-driven approach in the current study failed to reveal dimensional relationship with psychosis symptom scores, as study patients had varying illness chronicity, were in stable phases of illness (restricting range of symptoms) and were taking numerous medications that may affect symptom severity. An alternative approach would be to examine first-episode patients with symptoms independent of medication influence, although such patients are both rare and generally difficult to recruit. The study did not collect detailed longitudinal medication histories for probands to completely assess possible historical medication influence on the biomarkers. We emphasize caution in interpreting the current findings, since these were dependent on several parameters including threshold and voxel cluster size, which were used in identifying the regions and spectral features that were linearly linked in the joint ICA component. We were unable to validate the findings reported in the present study due to lack of an independent replication sample; however, the findings were in agreement with those reported in several prior studies demonstrating similar regions associated with alpha rhythm.

CONCLUSION

We conducted an exploratory study using a novel multivariate joint analysis for evaluating the linear relationship between AEEG frequency activity (between 1.5 and 50 Hz) and their biological concomitants in the form of morphometric changes in psychosis. Contrary to our initial prediction that linked abnormalities will be seen in psychosis (present in all three SZ, SZA, PBP proband groups), we identified a single EEG-GMV component comprising abnormal alpha activity accompanied by structural abnormalities in several brain regions; the abnormal EEG-GMV linear relationship was specific only to SZ probands. These findings suggest that EEG-GMV linkage serve as a potential disease-specific biomarker

for SZ, which may be useful in elucidating the pathophysiology of SZ. Further, the EEG–GMV linkage was not abnormal in relatives of probands. Although the joint model (EEG + GMV) revealed a greater divergence compared to the individual models, it was statistically not significant. The biological and genetic architecture underlying the joint oscillatory and imaging abnormality can be probed to gain insights into the disease pathology and thereby find disease-specific mechanisms that can be investigated for treatment options. Future studies will involve integrating functional, task-specific imaging and genetic data with both EEG and brain morphometric changes that may aid in the development of biological based classification of psychotic illness to provide better treatment outcome.

AUTHOR CONTRIBUTIONS

CT, GP, JS and MK were responsible for study design and research proposal. All authors contributed to writing the manuscript. All

authors read and corrected the manuscript. VC contributed to the methodology and analysis. BC contributed to the study design and interpretation. PS, BN, and SK managed the literature searches, performed the statistical data analyses, and wrote various sections of the final manuscript. All authors contributed to and have approved to the final manuscript.

ACKNOWLEDGMENTS

We thank the study participants for their contributions.

FUNDING

This study was supported by funding from National Institute of Mental Health through linked R01 MH077851 to Drs. Godfrey Pearlson, MH078113, Carol Tamminga, MH077945 Matcheri Keshavan, MH077862, John Sweeney, and MH077852, Dr. Gunavant Thaker.

REFERENCES

- Keshavan MS, Morris DW, Sweeney JA, Pearlson G, Thaker G, Seidman LJ, et al. A dimensional approach to the psychosis spectrum between bipolar disorder and schizophrenia: the Schizo-Bipolar Scale. *Schizophr Res* (2011) **133**(1–3):250–4. doi:10.1016/j.schres.2011.09.005
- Tamminga CA, Ivleva EI, Keshavan MS, Pearlson GD, Clementz BA, Witte B, et al. Clinical phenotypes of psychosis in the Bipolar-Schizophrenia Network on Intermediate Phenotypes (B-SNIP). *Am J Psychiatry* (2013) **170**(11):1263–74. doi:10.1176/appi.ajp.2013.12101339
- Glahn DC, Bearden CE, Cakir S, Barrett JA, Najt P, Serap Monkul E, et al. Differential working memory impairment in bipolar disorder and schizophrenia: effects of lifetime history of psychosis. *Bipolar Disord* (2006) **8**(2):117–23. doi:10.1111/j.1399-5618.2006.00296.x
- Ivleva EI, Bidesi AS, Keshavan MS, Pearlson GD, Meda SA, Dodig D, et al. Gray matter volume as an intermediate phenotype for psychosis: Bipolar-Schizophrenia Network on Intermediate Phenotypes (B-SNIP). *Am J Psychiatry* (2013) **170**(11):1285–96. doi:10.1176/appi.ajp.2013.13010126
- Hodgkinson CA, Goldman D, Jaeger J, Persaud S, Kane JM, Lipsky RH, et al. Disrupted in schizophrenia 1 (DISC1): association with schizophrenia, schizoaffective disorder, and bipolar disorder. *Am J Hum Genet* (2004) **75**(5):862–72. doi:10.1086/425586
- Berrettini WH. Susceptibility loci for bipolar disorder: overlap with inherited vulnerability to schizophrenia. *Biol Psychiatry* (2000) **47**(3):245–51. doi:10.1016/S0006-3223(99)00226-7
- Light G, Greenwood TA, Swerdlow NR, Calkins ME, Freedman R, Green MF, et al. Comparison of the Heritability of Schizophrenia and Endophenotypes in the COGS-1 Family Study. *Schizophr Bull* (2014) **40**(6):1404–11. doi:10.1093/schbul/sbu064
- Tsuang MT, Stone WS, Faraone SV. Genes, environment and schizophrenia. *Br J Psychiatry Suppl* (2001) **40**:s18–24. doi:10.1192/bjp.178.40.s18
- Calhoun VD, Adali T, Pearlson GD, Kiehl KA. Neuronal chronometry of target detection: fusion of hemodynamic and event-related potential data. *Neuroimage* (2006) **30**(2):544–53. doi:10.1016/j.neuroimage.2005.08.060
- Turetsky BI, Calkins ME, Light GA, Olincy A, Radant AD, Swerdlow NR. Neurophysiological endophenotypes of schizophrenia: the viability of selected candidate measures. *Schizophr Bull* (2007) **33**(1):69–94. doi:10.1093/schbul/sbl060
- Kubicki M, Shenton ME, Salisbury DF, Hirayasu Y, Kasai K, Kikinis R, et al. Voxel-based morphometric analysis of gray matter in first episode schizophrenia. *Neuroimage* (2002) **17**(4):1711–9. doi:10.1006/nimg.2002.1296
- Hubl D, Koenig T, Strik W, Federspiel A, Kreis R, Boesch C, et al. Pathways that make voices: white matter changes in auditory hallucinations. *Arch Gen Psychiatry* (2004) **61**(7):658–68. doi:10.1001/archpsyc.61.7.658
- Ellison-Wright I, Glahn DC, Laird AR, Thelen SM, Bullmore E. The anatomy of first-episode and chronic schizophrenia: an anatomical likelihood estimation meta-analysis. *Am J Psychiatry* (2008) **165**(8):1015–23. doi:10.1176/appi.ajp.2008.07101562
- Yu K, Cheung C, Leung M, Li Q, Chua S, McAlonan G. Are bipolar disorder and schizophrenia neuroanatomically distinct? An anatomical likelihood meta-analysis. *Front Hum Neurosci* (2010) **4**:189. doi:10.3389/fnhum.2010.00189
- Kam JW, Bolbecker AR, O'Donnell BF, Hetrick WP, Brenner CA. Resting state EEG power and coherence abnormalities in bipolar disorder and schizophrenia. *J Psychiatr Res* (2013) **47**(12):1893–901. doi:10.1016/j.jpsychires.2013.09.009
- Narayanan B, O'Neil K, Berwise C, Stevens MC, Calhoun VD, Clementz BA, et al. Resting state electroencephalogram oscillatory abnormalities in schizophrenia and psychotic bipolar patients and their relatives from the bipolar and schizophrenia network on intermediate phenotypes study. *Biol Psychiatry* (2014) **76**(6):456–65. doi:10.1016/j.biopsych.2013.12.008
- Lehmann D, Faber PL, Pascual-Marqui RD, Milz P, Herrmann WM, Koukkou M, et al. Functionally aberrant electrophysiological cortical connectivities in first episode medication-naïve schizophrenics from three psychiatry centers. *Front Hum Neurosci* (2014) **8**:635. doi:10.3389/fnhum.2014.00635
- Mulert C. Simultaneous EEG and fMRI: towards the characterization of structure and dynamics of brain networks. *Dialogues Clin Neurosci* (2013) **15**(3):381–6.
- Fujisawa S, Buzsaki G. A 4 Hz oscillation adaptively synchronizes prefrontal, VTA, and hippocampal activities. *Neuron* (2011) **72**(1):153–65. doi:10.1016/j.neuron.2011.08.018
- Scheeringa R, Petersson KM, Kleinschmidt A, Jensen O, Bastiaansen MC. EEG alpha power modulation of fMRI resting-state connectivity. *Brain Connect* (2012) **2**(5):254–64. doi:10.1089/brain.2012.0088
- Mantini D, Perrucci MG, Del Gratta C, Romani GL, Corbetta M. Electrophysiological signatures of resting state networks in the human brain. *Proc Natl Acad Sci USA* (2007) **104**(32):13170–5. doi:10.1073/pnas.0700668104
- Laufs H, Krakow K, Sterzer P, Eger E, Beyerle A, Salek-Haddadi A, et al. Electroencephalographic signatures of attentional and cognitive default modes in spontaneous brain activity fluctuations at rest. *Proc Natl Acad Sci USA* (2003) **100**(19):11053–8. doi:10.1073/pnas.1831638100
- Omata K, Hanakawa T, Morimoto M, Honda M. Spontaneous slow fluctuation of EEG alpha rhythm reflects activity in deep-brain structures: a simultaneous EEG-fMRI study. *PLoS One* (2013) **8**(6):e66869. doi:10.1371/journal.pone.0066869
- Edgar JC, Chen YH, Lanza M, Howell B, Chow VY, Heiken K, et al. Cortical thickness as a contributor to abnormal oscillations in schizophrenia? *NeuroImage Clinical* (2014) **4**:122–9. doi:10.1016/j.nicl.2013.11.004

25. Ethridge LE, Hamm JP, Pearlson GD, Tamminga CA, Sweeney JA, Keshavan MS, et al. Event-related potential and time-frequency endophenotypes for schizophrenia and psychotic bipolar disorder. *Biol Psychiatry* (2015) 77(2):127–36. doi:10.1016/j.biopsych.2014.03.032
26. Smit DJ, Boomsma DI, Schnack HG, Hulshoff Pol HE, de Geus EJ. Individual differences in EEG spectral power reflect genetic variance in gray and white matter volumes. *Twin Res Hum Genet* (2012) 15(3):384–92. doi:10.1017/thg.2012.6
27. Sponheim SR, Clementz BA, Iacono WG, Beiser M. Clinical and biological concomitants of resting state EEG power abnormalities in schizophrenia. *Biol Psychiatry* (2000) 48(11):1088–97. doi:10.1016/S0006-3223(00)00907-0
28. Danos P, Guich S, Abel L, Buchsbaum MS. Eeg alpha rhythm and glucose metabolic rate in the thalamus in schizophrenia. *Neuropsychobiology* (2001) 43(4):265–72. doi:10.1159/000054901
29. Boutros NN, Arfken C, Galderisi S, Warrick J, Pratt G, Iacono W. The status of spectral EEG abnormality as a diagnostic test for schizophrenia. *Schizophr Res* (2008) 99(1–3):225–37. doi:10.1016/j.schres.2007.11.020
30. Moran LV, Hong LE. High vs low frequency neural oscillations in schizophrenia. *Schizophr Bull* (2011) 37(4):659–63. doi:10.1093/schbul/sbr056
31. Clementz BA, Sponheim SR, Iacono WG, Beiser M. Resting EEG in first-episode schizophrenia patients, bipolar psychosis patients, and their first-degree relatives. *Psychophysiology* (1994) 31(5):486–94. doi:10.1111/1/j.1469-8986.1994.tb01052.x
32. Venables NC, Bernat EM, Sponheim SR. Genetic and disorder-specific aspects of resting state EEG abnormalities in schizophrenia. *Schizophr Bull* (2009) 35(4):826–39. doi:10.1093/schbul/sbn021
33. Itil TM. Qualitative and quantitative EEG findings in schizophrenia. *Schizophr Bull* (1977) 3(1):61–79. doi:10.1093/schbul/3.1.61
34. Winterer G, Egan MF, Radler T, Hyde T, Coppola R, Weinberger DR. An association between reduced interhemispheric EEG coherence in the temporal lobe and genetic risk for schizophrenia. *Schizophr Res* (2001) 49(1–2):129–43. doi:10.1016/S0920-9964(00)00128-6
35. Spencer KM. Baseline gamma power during auditory steady-state stimulation in schizophrenia. *Front Hum Neurosci* (2011) 5:190. doi:10.3389/fnhum.2011.00190
36. Kahn EM, Weiner RD, Coppola R, Kudler HS, Schultz K. Spectral and topographic analysis of EEG in schizophrenic patients. *Biol Psychiatry* (1993) 33(4):284–90. doi:10.1016/0006-3223(93)90296-P
37. Gattaz WF, Mayer S, Ziegler P, Platz M, Gasser T. Hypofrontality on topographic EEG in schizophrenia. Correlations with neuropsychological and psychopathological parameters. *Eur Arch Psychiatry Clin Neurosci* (1992) 241(6):328–32. doi:10.1007/BF02191956
38. Hong LE, Summerfelt A, Mitchell BD, O'Donnell P, Thaker GK. A shared low-frequency oscillatory rhythm abnormality in resting and sensory gating in schizophrenia. *Clin Neurophysiol* (2012) 123(2):285–92. doi:10.1016/j.clinph.2011.07.025
39. El-Badri SM, Ashton CH, Moore PB, Marsh VR, Ferrier IN. Electrophysiological and cognitive function in young euthymic patients with bipolar affective disorder. *Bipolar Disord* (2001) 3(2):79–87. doi:10.1034/j.1399-5618.2001.030206.x
40. Sponheim SR, Iacono WG, Thuras PD, Nugent SM, Beiser M. Sensitivity and specificity of select biological indices in characterizing psychotic patients and their relatives. *Schizophr Res* (2003) 63(1–2):27–38. doi:10.1016/S0920-9964(02)00385-7
41. Harris A, Melkonian D, Williams L, Gordon E. Dynamic spectral analysis findings in first episode and chronic schizophrenia. *Int J Neurosci* (2006) 116(3):223–46. doi:10.1080/00207450500402977
42. Ranlund S, Nottage J, Shaikh M, Dutt A, Constante M, Walshe M, et al. Resting EEG in psychosis and at-risk populations – a possible endophenotype? *Schizophr Res* (2014) 153(1–3):96–102. doi:10.1016/j.schres.2013.12.017
43. Mientus S, Gallinat J, Wuebben Y, Pascual-Marqui RD, Mulert C, Frick K, et al. Cortical hypoactivation during resting EEG in schizophrenics but not in depressives and schizotypal subjects as revealed by low resolution electromagnetic tomography (LORETA). *Psychiatry Res* (2002) 116(1–2):95–111. doi:10.1016/S0925-4927(02)00043-4
44. Takahashi T, Malhi GS, Wood SJ, Yucel M, Walterfang M, Kawasaki Y, et al. Gray matter reduction of the superior temporal gyrus in patients with established bipolar I disorder. *J Affect Disord* (2010) 123(1–3):276–82. doi:10.1016/j.jad.2009.08.022
45. Takahashi T, Wood SJ, Yung AR, Soulsby B, McGorry PD, Suzuki M, et al. Progressive gray matter reduction of the superior temporal gyrus during transition to psychosis. *Arch Gen Psychiatry* (2009) 66(4):366–76. doi:10.1001/archgenpsychiatry.2009.12
46. Rimol LM, Nesvag R, Hagler DJ Jr, Bergmann O, Fennema-Notestine C, Hartberg CB, et al. Cortical volume, surface area, and thickness in schizophrenia and bipolar disorder. *Biol Psychiatry* (2012) 71(6):552–60. doi:10.1016/j.biopsych.2011.11.026
47. McDonald C, Bullmore E, Sham P, Chitnis X, Suckling J, MacCabe J, et al. Regional volume deviations of brain structure in schizophrenia and psychotic bipolar disorder: computational morphometry study. *Br J Psychiatry* (2005) 186:369–77. doi:10.1192/bjp.186.5.369
48. Zhou SY, Suzuki M, Takahashi T, Hagino H, Kawasaki Y, Matsui M, et al. Parietal lobe volume deficits in schizophrenia spectrum disorders. *Schizophr Res* (2007) 89(1–3):35–48. doi:10.1016/j.schres.2006.08.032
49. Laidi C, d'Albis MA, Wessa M, Linke J, Phillips ML, Delavest M, et al. Cerebellar volume in schizophrenia and bipolar I disorder with and without psychotic features. *Acta Psychiatr Scand* (2015) 131(3):223–33. doi:10.1111/acps.12363
50. Amann BL, Canales-Rodriguez EJ, Madre M, Radua J, Monte G, Alonso-Lana S, et al. Brain structural changes in schizoaffective disorder compared to schizophrenia and bipolar disorder. *Acta Psychiatr Scand* (2015). doi:10.1111/acps.12440
51. Fornito A, Yucel M, Pantelis C. Reconciling neuroimaging and neuropathological findings in schizophrenia and bipolar disorder. *Curr Opin Psychiatry* (2009) 22(3):312–9. doi:10.1097/YCO.0b013e32832a1353
52. Shenton ME, Dickey CC, Frumin M, McCarley RW. A review of MRI findings in schizophrenia. *Schizophr Res* (2001) 49(1–2):1–52. doi:10.1016/S0920-9964(01)00163-3
53. Correa NM, Li YO, Adali T, Calhoun VD. Canonical correlation analysis for feature-based fusion of biomedical imaging modalities and its application to detection of associative networks in schizophrenia. *IEEE J Sel Top Signal Process* (2008) 2(6):998–1007. doi:10.1109/JSTSP.2008.2008265
54. Sui J, Pearlson G, Caprihan A, Adali T, Kiehl KA, Liu J, et al. Discriminating schizophrenia and bipolar disorder by fusing fMRI and DTI in a multimodal CCA+ joint ICA model. *Neuroimage* (2011) 57(3):839–55. doi:10.1016/j.neuroimage.2011.05.055
55. Calhoun VD, Adali T, Giuliani NR, Pekar JJ, Kiehl KA, Pearlson GD. Method for multimodal analysis of independent source differences in schizophrenia: combining gray matter structural and auditory oddball functional data. *Hum Brain Mapp* (2006) 27(1):47–62. doi:10.1002/hbm.20166
56. Sui J, He H, Yu Q, Chen J, Rogers J, Pearlson GD, et al. Combination of resting state fMRI, DTI, and sMRI data to discriminate schizophrenia by N-way MCCA + jICA. *Front Hum Neurosci* (2013) 7:235. doi:10.3389/fnhum.2013.00235
57. Sui J, Huster R, Yu Q, Segall JM, Calhoun VD. Function-structure associations of the brain: evidence from multimodal connectivity and covariance studies. *Neuroimage* (2013) 102 Pt 1:11–23. doi:10.1016/j.neuroimage.2013.09.044
58. Filippi M, van den Heuvel MP, Fornito A, He Y, Hulshoff Pol HE, Agosta E, et al. Assessment of system dysfunction in the brain through MRI-based connectomics. *Lancet Neurol* (2013) 12(12):1189–99. doi:10.1016/S1474-4422(13)70144-3
59. Kay SR, Fiszbein A, Opler LA. The positive and negative syndrome scale (PANSS) for schizophrenia. *Schizophr Bull* (1987) 13(2):261–76. doi:10.1093/schbul/13.2.261
60. Montgomery SA, Asberg M. A new depression scale designed to be sensitive to change. *Br J Psychiatry* (1979) 134:382–9. doi:10.1192/bjp.134.4.382
61. Young RC, Biggs JT, Ziegler VE, Meyer DA. A rating scale for mania: reliability, validity and sensitivity. *Br J Psychiatry* (1978) 133:429–35. doi:10.1192/bjp.133.5.429
62. Birchwood M, Smith J, Cochrane R, Wetton S, Copestake S. The Social Functioning Scale. The development and validation of a new scale of social adjustment for use in family intervention programmes with schizophrenic patients. *Br J Psychiatry* (1990) 157:853–9. doi:10.1192/bjp.157.6.853

63. Delorme A, Makeig S. EEGLAB: an open source toolbox for analysis of single-trial EEG dynamics including independent component analysis. *J Neurosci Methods* (2004) **134**(1):9–21. doi:10.1016/j.jneumeth.2003.10.009
64. Zhou W, Gotman J. Removal of EMG and ECG artifacts from EEG based on wavelet transform and ICA. *Conf Proc IEEE Eng Med Biol Soc* (2004) **1**:392–5. doi:10.1109/IEMBS.2004.1403176
65. Jung TP, Makeig S, Humphries C, Lee TW, McKeown MJ, Iragui V, et al. Removing electroencephalographic artifacts by blind source separation. *Psychophysiology* (2000) **37**(2):163–78. doi:10.1111/1469-8986.3720163
66. De Clercq W, Vergult A, Vanrumste B, Van Paesschen W, Van Huffel S. Canonical correlation analysis applied to remove muscle artifacts from the electroencephalogram. *IEEE Trans Biomed Eng* (2006) **53**(12 Pt 1):2583–7. doi:10.1109/TBME.2006.879459
67. Crespo-Garcia M, Atienza M, Cantero JL. Muscle artifact removal from human sleep EEG by using independent component analysis. *Ann Biomed Eng* (2008) **36**(3):467–75. doi:10.1007/s10439-008-9442-y
68. Ashburner J, Friston KJ. Voxel-based morphometry – the methods. *Neuroimage* (2000) **11**(6 Pt 1):805–21. doi:10.1006/nimg.2000.0582
69. Good CD, Johnsrude IS, Ashburner J, Henson RN, Friston KJ, Frackowiak RS. A voxel-based morphometric study of ageing in 465 normal adult human brains. *Neuroimage* (2001) **14**(1 Pt 1):21–36. doi:10.1006/nimg.2001.0786
70. Stephen JM, Coffman BA, Jung RE, Bustillo JR, Aine CJ, Calhoun VD. Using joint ICA to link function and structure using MEG and DTI in schizophrenia. *Neuroimage* (2013) **83**:418–30. doi:10.1016/j.neuroimage.2013.06.038
71. Rissanen J. A universal prior for integer and estimation by minimum description length. *Ann Stat* (1983) **11**(2):6. doi:10.1214/aos/1176346150
72. Himberg J, Hyvarinen A, Esposito F. Validating the independent components of neuroimaging time series via clustering and visualization. *Neuroimage* (2004) **22**(3):1214–22. doi:10.1016/j.neuroimage.2004.03.027
73. Chen J, Calhoun VD, Liu J. ICA order selection based on consistency: application to genotype data. *Conf Proc IEEE Eng Med Biol Soc* (2012) **2012**:360–3. doi:10.1109/EMBC.2012.6345943
74. Bell AJ, Sejnowski TJ. An information-maximization approach to blind separation and blind deconvolution. *Neural Comput* (1995) **7**(6):1129–59. doi:10.1162/neco.1995.7.6.1129
75. Woods SW. Chlorpromazine equivalent doses for the newer atypical antipsychotics. *J Clin Psychiatry* (2003) **64**(6):663–7. doi:10.4088/JCP.v64n0607
76. Calhoun V, Wu L, Kiehl K, Eichele T, Pearlson G. Aberrant processing of deviant stimuli in schizophrenia revealed by fusion of fMRI and EEG data. *Acta Neuropsychiatrica* (2010) **22**(3):127–38. doi:10.1111/j.1601-5215.2010.00467.x
77. Van Erven T, Harremoës P. Renyi divergence and Kullback-Leibler divergence. *IEEE Trans Inf Theory* (2007) **60**(7):24. doi:10.1109/TIT.2014.2320500
78. Krishnamurthy A, Kandasamy K, Poczós B, Wasserman L, editors. Nonparametric estimation of Renyi divergence and friends. Proceedings of the 31st International Conference on Machine Learning. Beijing: Microtome Publishing (2014).
79. Cleghorn JM, Zipursky RB, List SJ. Structural and functional brain imaging in schizophrenia. *J Psychiatry Neurosci* (1991) **16**(2):53–74.
80. Buckley PF. Neuroimaging of schizophrenia: structural abnormalities and pathophysiological implications. *Neuropsychiatr Dis Treat* (2005) **1**(3):193–204.
81. Strakowski SM, Delbello MP, Adler CM. The functional neuroanatomy of bipolar disorder: a review of neuroimaging findings. *Mol Psychiatry* (2005) **10**(1):105–16. doi:10.1038/sj.mp.4001585
82. Fornito A, Yucel M, Patti J, Wood SJ, Pantelis C. Mapping grey matter reductions in schizophrenia: an anatomical likelihood estimation analysis of voxel-based morphometry studies. *Schizophr Res* (2009) **108**(1–3):104–13. doi:10.1016/j.schres.2008.12.011
83. Uhlhaas PJ, Singer W. Abnormal neural oscillations and synchrony in schizophrenia. *Nat Rev Neurosci* (2010) **11**(2):100–13. doi:10.1038/nrn2774
84. Basar E, Schurmann M, Basar-Eroglu C, Karakas S. Alpha oscillations in brain functioning: an integrative theory. *Int J Psychophysiol* (1997) **26**(1–3):5–29. doi:10.1016/S0167-8760(97)00753-8
85. Berger H. On the electroencephalogram of man. *Electroencephalogr Clin Neurophysiol* (1969) **Suppl 28**:37+.
86. Salmelin R, Hari R. Spatiotemporal characteristics of sensorimotor neuromagnetic rhythms related to thumb movement. *Neuroscience* (1994) **60**(2):537–50. doi:10.1016/0306-4522(94)90263-1
87. Hari R, Salmelin R, Makela JP, Salenius S, Helle M. Magnetoencephalographic cortical rhythms. *Int J Psychophysiol* (1997) **26**(1–3):51–62. doi:10.1016/S0167-8760(97)00755-1
88. Tiihonen J, Hari R, Kajola M, Karhu J, Ahlfors S, Tissari S. Magnetoencephalographic 10-Hz rhythm from the human auditory cortex. *Neurosci Lett* (1991) **129**(2):303–5. doi:10.1016/0304-3940(91)90486-D
89. Halgren E, Boujon C, Clarke J, Wang C, Chauvel P. Rapid distributed fronto-parieto-occipital processing stages during working memory in humans. *Cereb Cortex* (2002) **12**(7):710–28. doi:10.1093/cercor/12.7.710
90. Sauseng P, Klimesch W, Gruber WR, Hanslmayr S, Freunberger R, Doppelmayr M. Are event-related potential components generated by phase resetting of brain oscillations? A critical discussion. *Neuroscience* (2007) **146**(4):1435–44. doi:10.1016/j.neuroscience.2007.03.014
91. Destexhe A, McCormick DA, Sejnowski TJ. A model for 8–10 Hz spindling in interconnected thalamic relay and reticularis neurons. *Biophys J* (1993) **65**(6):2473–7. doi:10.1016/S0006-3495(93)81297-9
92. Vijayan S, Kopell NJ. Thalamic model of awake alpha oscillations and implications for stimulus processing. *Proc Natl Acad Sci USA* (2012) **109**(45):18553–8. doi:10.1073/pnas.1215385109
93. Hughes SW, Lorincz M, Cope DW, Blethyn KL, Kekesi KA, Parri HR, et al. Synchronized oscillations at alpha and theta frequencies in the lateral geniculate nucleus. *Neuron* (2004) **42**(2):253–68. doi:10.1016/S0896-6273(04)00191-6
94. Lega BC, Jacobs J, Kahana M. Human hippocampal theta oscillations and the formation of episodic memories. *Hippocampus* (2012) **22**(4):748–61. doi:10.1002/hipo.20937
95. Tesche CD, Karhu J. Theta oscillations index human hippocampal activation during a working memory task. *Proc Natl Acad Sci USA* (2000) **97**(2):919–24. doi:10.1073/pnas.97.2.919
96. Congedo M, John RE, De Ridder D, Prichep L. Group independent component analysis of resting state EEG in large normative samples. *Int J Psychophysiol* (2010) **78**(2):89–99. doi:10.1016/j.ijpsycho.2010.06.003
97. Jann K, Dierks T, Boesch C, Kottlow M, Strik W, Koenig T. BOLD correlates of EEG alpha phase-locking and the fMRI default mode network. *Neuroimage* (2009) **45**(3):903–16. doi:10.1016/j.neuroimage.2009.01.001
98. Bridwell DA, Wu L, Eichele T, Calhoun VD. The spatio-spectral characterization of brain networks: fusing concurrent EEG spectra and fMRI maps. *Neuroimage* (2013) **69**:101–11. doi:10.1016/j.neuroimage.2012.12.024
99. Laufs H, Kleinschmidt A, Beyerle A, Eger E, Salek-Haddadi A, Preibisch C, et al. EEG-correlated fMRI of human alpha activity. *Neuroimage* (2003) **19**(4):1463–76. doi:10.1016/S1053-8119(03)00286-6
100. Cuspineda ER, Machado C, Virues T, Martinez-Montes E, Ojeda A, Valdes PA, et al. Source analysis of alpha rhythm reactivity using LORETA imaging with 64-channel EEG and individual MRI. *Clin EEG Neurosci* (2009) **40**(3):150–6. doi:10.1177/155005940904000306
101. Michel CM, Lehmann D, Henggeler B, Brandeis D. Localization of the sources of EEG delta, theta, alpha and beta frequency bands using the FFT dipole approximation. *Electroencephalogr Clin Neurophysiol* (1992) **82**(1):38–44. doi:10.1016/0013-4694(92)90180-P
102. Rodin EA, Rodin MJ. Dipole sources of the human alpha rhythm. *Brain Topogr* (1995) **7**(3):201–8. doi:10.1007/BF01202379
103. Feige B, Scheffler K, Esposito F, Di Salle F, Hennig J, Seifritz E. Cortical and subcortical correlates of electroencephalographic alpha rhythm modulation. *J Neurophysiol* (2005) **93**(5):2864–72. doi:10.1152/jn.00721.2004
104. Koch M, Schmiecht-Fehr C, Mathes B. Neuropharmacology of altered brain oscillations in schizophrenia. *Int J Psychophysiol* (2015). doi:10.1016/j.ijpsycho.2015.02.014
105. Selemon LD, Goldman-Rakic PS. The reduced neuropil hypothesis: a circuit based model of schizophrenia. *Biol Psychiatry* (1999) **45**(1):17–25. doi:10.1016/S0006-3223(98)00281-9
106. Harrison PJ. The neuropathology of schizophrenia. A critical review of the data and their interpretation. *Brain* (1999) **122**(Pt 4):593–624. doi:10.1093/brain/122.4.593
107. Marsman A, Mandl RC, Klomp DW, Bohlken MM, Boer VO, Andreychenko A, et al. GABA and glutamate in schizophrenia: a 7 T (1)H-MRS study. *NeuroImage Clinical* (2014) **6**:398–407. doi:10.1016/j.nicl.2014.10.005
108. Hindriks R, Woolrich M, Luchhoo H, Joensson M, Mohseni H, Kringelbach ML, et al. Role of white-matter pathways in coordinating alpha oscillations

- in resting visual cortex. *Neuroimage* (2015) **106**:328–39. doi:10.1016/j.neuroimage.2014.10.057
109. Andreone N, Tansella M, Cerini R, Versace A, Rambaldelli G, Perlini C, et al. Cortical white-matter microstructure in schizophrenia. Diffusion imaging study. *Br J Psychiatry* (2007) **191**:113–9. doi:10.1192/bjp.bp.105.020990
 110. Kubicki M, McCarley RW, Shenton ME. Evidence for white matter abnormalities in schizophrenia. *Curr Opin Psychiatry* (2005) **18**(2):121–34. doi:10.1097/00001504-200503000-00004
 111. Fitzsimmons J, Kubicki M, Shenton ME. Review of functional and anatomical brain connectivity findings in schizophrenia. *Curr Opin Psychiatry* (2013) **26**(2):172–87. doi:10.1097/YCO.0b013e32835d9e6a
 112. Skudlarski P, Schretlen DJ, Thaker GK, Stevens MC, Keshavan MS, Sweeney JA, et al. Diffusion tensor imaging white matter endophenotypes in patients with schizophrenia or psychotic bipolar disorder and their relatives. *Am J Psychiatry* (2013) **170**(8):886–98. doi:10.1176/appi.ajp.2013.12111448
 113. Skudlarski P, Jagannathan K, Anderson K, Stevens MC, Calhoun VD, Skudlarska BA, et al. Brain connectivity is not only lower but different in schizophrenia: a combined anatomical and functional approach. *Biol Psychiatry* (2010) **68**(1):61–9. doi:10.1016/j.biopsych.2010.03.035
 114. Alfimova M, Uvarova L. Cognitive peculiarities in relatives of schizophrenic and schizoaffective patients: heritability and resting EEG-correlates. *Int J Psychophysiol* (2003) **49**(3):201–16. doi:10.1016/S0167-8760(03)00133-8
 115. Klimesch W, Sauseng P, Hanslmayr S. EEG alpha oscillations: the inhibition-timing hypothesis. *Brain Res Rev* (2007) **53**(1):63–88. doi:10.1016/j.brainresrev.2006.06.003
 116. Klimesch W. alpha-band oscillations, attention, and controlled access to stored information. *Trends Cogn Sci* (2012) **16**(12):606–17. doi:10.1016/j.tics.2012.10.007
 117. Barry RJ, Clarke AR, Johnstone SJ, Magee CA, Rushby JA. EEG differences between eyes-closed and eyes-open resting conditions. *Clin Neurophysiol* (2007) **118**(12):2765–73. doi:10.1016/j.clinph.2007.07.028
 118. Uhlhaas PJ, Haenschel C, Nikolic D, Singer W. The role of oscillations and synchrony in cortical networks and their putative relevance for the pathophysiology of schizophrenia. *Schizophr Bull* (2008) **34**(5):927–43. doi:10.1093/schbul/sbn062
 119. Goncalves SI, de Munck JC, Pouwels PJ, Schoonhoven R, Kuijter JP, Maurits NM, et al. Correlating the alpha rhythm to BOLD using simultaneous EEG/fMRI: inter-subject variability. *Neuroimage* (2006) **30**(1):203–13. doi:10.1016/j.neuroimage.2005.09.062
 120. Woodward ND, Karbasforoushan H, Heckers S. Thalamocortical dysconnectivity in schizophrenia. *Am J Psychiatry* (2012) **169**(10):1092–9. doi:10.1176/appi.ajp.2012.12010056
 121. Onitsuka T, Shenton ME, Salisbury DF, Dickey CC, Kasai K, Toner SK, et al. Middle and inferior temporal gyrus gray matter volume abnormalities in chronic schizophrenia: an MRI study. *Am J Psychiatry* (2004) **161**(9):1603–11. doi:10.1176/appi.ajp.161.9.1603
 122. Kikinis Z, Fallon JH, Niznikiewicz M, Nestor P, Davidson C, Bobrow L, et al. Gray matter volume reduction in rostral middle frontal gyrus in patients with chronic schizophrenia. *Schizophr Res* (2010) **123**(2–3):153–9. doi:10.1016/j.schres.2010.07.027
 123. Pearlson GD, Petty RG, Ross CA, Tien AY. Schizophrenia: a disease of heteromodal association cortex? *Neuropsychopharmacology* (1996) **14**(1):1–17. doi:10.1016/S0893-133X(96)80054-6
 124. Torrey EF. Schizophrenia and the inferior parietal lobule. *Schizophr Res* (2007) **97**(1–3):215–25. doi:10.1016/j.schres.2007.08.023
 125. Hulshoff Pol HE, Schnack HG, Mandl RC, van Haren NE, Koning H, Collins DL, et al. Focal gray matter density changes in schizophrenia. *Arch Gen Psychiatry* (2001) **58**(12):1118–25. doi:10.1001/archpsyc.58.12.1118
 126. Rimol LM, Hartberg CB, Nesvag R, Fennema-Notestine C, Hagler DJ Jr, Pung CJ, et al. Cortical thickness and subcortical volumes in schizophrenia and bipolar disorder. *Biol Psychiatry* (2010) **68**(1):41–50. doi:10.1016/j.biopsych.2010.03.036
 127. Glahn DC, Laird AR, Ellison-Wright I, Thelen SM, Robinson JL, Lancaster JL, et al. Meta-analysis of gray matter anomalies in schizophrenia: application of anatomic likelihood estimation and network analysis. *Biol Psychiatry* (2008) **64**(9):774–81. doi:10.1016/j.biopsych.2008.03.031
 128. Levitt JJ, McCarley RW, Nestor PG, Petrescu C, Donnino R, Hirayasu Y, et al. Quantitative volumetric MRI study of the cerebellum and vermis in schizophrenia: clinical and cognitive correlates. *Am J Psychiatry* (1999) **156**(7):1105–7.
 129. Javitt DC, Freedman R. Sensory processing dysfunction in the personal experience and neuronal machinery of schizophrenia. *Am J Psychiatry* (2015) **172**(1):17–31. doi:10.1176/appi.ajp.2014.13121691
 130. Javitt DC. Sensory processing in schizophrenia: neither simple nor intact. *Schizophr Bull* (2009) **35**(6):1059–64. doi:10.1093/schbul/sbp110
 131. Smieskova R, Fusar-Poli P, Allen P, Bendfeldt K, Stieglitz RD, Drewe J, et al. The effects of antipsychotics on the brain: what have we learnt from structural imaging of schizophrenia? – a systematic review. *Curr Pharm Des* (2009) **15**(22):2535–49. doi:10.2174/138161209788957456
 132. Ho BC, Andreasen NC, Ziebell S, Pierson R, Magnotta V. Long-term antipsychotic treatment and brain volumes: a longitudinal study of first-episode schizophrenia. *Arch Gen Psychiatry* (2011) **68**(2):128–37. doi:10.1001/archgenpsychiatry.2010.199
 133. Centorrino F, Price BH, Tuttle M, Bahk WM, Hennen J, Albert MJ, et al. EEG abnormalities during treatment with typical and atypical antipsychotics. *Am J Psychiatry* (2002) **159**(1):109–15. doi:10.1176/appi.ajp.159.1.109

Conflict of Interest Statement: Dr. John Sweeney has received support from Takeda, BMS, Lilly, Roche, and Janssen. Dr. Matcheri Keshavan has received support from Sunovion. Dr. Carol Tamminga has received funding from Astellas, Eli Lilly, Intracellular Therapies, Lundbeck and Pure Tech Ventures. Other authors declare no financial interest in relation to the work described in this manuscript other than the grant funding.

Copyright © 2015 Soh, Narayanan, Khadka, Calhoun, Keshavan, Tamminga, Sweeney, Clementz and Pearlson. This is an open-access article distributed under the terms of the Creative Commons Attribution License (CC BY). The use, distribution or reproduction in other forums is permitted, provided the original author(s) or licensor are credited and that the original publication in this journal is cited, in accordance with accepted academic practice. No use, distribution or reproduction is permitted which does not comply with these terms.