



DIGITAL ACCESS TO  
SCHOLARSHIP AT HARVARD  
DASH.HARVARD.EDU



HARVARD LIBRARY  
Office for Scholarly Communication

# The uncinate fasciculus and extraversion in schizotypal personality disorder: A diffusion tensor imaging study

The Harvard community has made this  
article openly available. [Please share](#) how  
this access benefits you. Your story matters

Citation	Gurrera, Ronald J., Motoaki Nakamura, Marek Kubicki, Chandlee C. Dickey, Margaret A. Niznikiewicz, Martina M. Voglmaier, Larry J. Seidman, Carl-Fredrik Westin, Stephan E. Maier, Robert W. McCarley, and Martha E. Shenton. 2007. "The Uncinate Fasciculus and Extraversion in Schizotypal Personality Disorder: A Diffusion Tensor Imaging Study." <i>Schizophrenia Research</i> 90, nos. 1-3: 360-362. doi:10.1016/j.schres.2006.10.003
Published Version	doi:10.1016/j.schres.2006.10.003
Citable link	<a href="http://nrs.harvard.edu/urn-3:HUL.InstRepos:28538474">http://nrs.harvard.edu/urn-3:HUL.InstRepos:28538474</a>
Terms of Use	This article was downloaded from Harvard University's DASH repository, and is made available under the terms and conditions applicable to Other Posted Material, as set forth at <a href="http://nrs.harvard.edu/urn-3:HUL.InstRepos:dash.current.terms-of-use#LAA">http://nrs.harvard.edu/urn-3:HUL.InstRepos:dash.current.terms-of-use#LAA</a>

Published in final edited form as:

*Schizophr Res.* 2007 February ; 90(1-3): 360–362.

## THE UNCINATE FASCICULUS AND EXTRAVERSION IN SCHIZOTYPAL PERSONALITY DISORDER: A DIFFUSION TENSOR IMAGING STUDY

Ronald J. Gurrera, MD<sup>a</sup>, Motoaki Nakamura, MD PhD<sup>a,b</sup>, Marek Kubicki, MD PhD<sup>a,b,c</sup>,  
Chandlee C. Dickey, MD<sup>a,b</sup>, Margaret A. Niznikiewicz, PhD<sup>a</sup>, Martina M. Voglmaier, PhD<sup>a</sup>,  
Larry J. Seidman, PhD<sup>d</sup>, Carl-Fredrik Westin, PhD<sup>c</sup>, Stephan E. Maier, MD PhD<sup>c</sup>, Robert W.  
McCarley, MD<sup>a</sup>, and Martha E. Shenton, PhD<sup>a,b,c</sup>

*a* Clinical Neuroscience Division, Laboratory of Neuroscience, Department of Psychiatry, VA Boston  
Healthcare System and Harvard Medical School, Department of Psychiatry, Boston MA, USA

*b* Psychiatry Neuroimaging Laboratory, Brigham and Women's Hospital and Harvard Medical School,  
Department of Psychiatry, Boston MA, USA

*c* Surgical Planning Laboratory, Magnetic Resonance Imaging Division, Department of Radiology, Brigham  
and Women's Hospital and Harvard Medical School, Boston MA, USA

*d* The Massachusetts Mental Health Center Public Academic Psychiatry Division of the Beth Israel Deaconess  
Medical Center and Harvard Medical School Department of Psychiatry, Boston MA, USA

---

The uncinate fasciculus (UF) is the most prominent white matter tract connecting frontal and temporal brain regions, and is altered in schizotypal personality disorder (SPD) (Nakamura et al, 2005). SPD is also associated with elevated neuroticism and reduced extraversion and agreeableness (Gurrera et al, 2005a). Since brain regions connected by the UF play important roles in personality function, we tested the hypothesis that UF white matter integrity and personality dimensions are interrelated in SPD.

Eleven neuroleptic-naive men with SPD and eight psychiatrically healthy men were recruited from the community for magnetic resonance studies of SPD (Nakamura et al, 2005). Subjects were included in the present analysis if they also completed a personality questionnaire (NEO Five Factor Inventory: Costa and McCrae, 1992).

Fiber tract coherence was measured by fractional anisotropy (FA); a higher FA index indicates greater water diffusion directionality in the fiber tract, since water diffusion is greater inside the axon than across the myelin sheath (i.e., diffusion is “anisotropic”). Line scan diffusion tensor imaging and computational measures were performed as previously described (Kubicki et al, 2002). Multiple linear regression, with right and left FA entered as independent variables, was used to evaluate the relationship between UF integrity and personality measures. Standardized regression coefficients ( $\beta$ ) are reported; probabilities are two-tailed.

---

Corresponding Author: Ronald J. Gurrera, MD, VA Boston Healthcare System, 940 Belmont Street (116A), Brockton, MA 02301, USA.,  
TEL: 774-826-2482, FAX: 508-586-0894, ronald\_gurrera@hms.harvard.edu or ronald.gurrera@va.gov

**Publisher's Disclaimer:** This is a PDF file of an unedited manuscript that has been accepted for publication. As a service to our customers we are providing this early version of the manuscript. The manuscript will undergo copyediting, typesetting, and review of the resulting proof before it is published in its final citable form. Please note that during the production process errors may be discovered which could affect the content, and all legal disclaimers that apply to the journal pertain.

SPD and comparison groups did not differ in mean age ( $39.2 \pm 13.0$  vs.  $34.2 \pm 9.8$  years), subject or parental SES, educational level, or full scale IQ. SPD subjects had higher mean Neuroticism ( $58.7 \pm 14.6$  vs.  $39.0 \pm 6.4$ ,  $t = 3.55$ ,  $df = 17$ ,  $p = .002$ ), and lower mean Extraversion ( $43.6 \pm 13.5$  vs.  $59.7 \pm 4.9$ ,  $t = -3.20$ ,  $df = 17$ ,  $p = .005$ ) and Agreeableness ( $41.8 \pm 14.1$  vs.  $58.1 \pm 10.3$ ,  $t = -2.76$ ,  $df = 17$ ,  $p = .013$ ).

SPD subjects had significantly lower mean right FA ( $592.5 \pm 40.5$  vs.  $638.1 \pm 42.9$ ,  $t = -2.37$ ,  $df = 17$ ,  $p = .030$ ) and left FA ( $597.1 \pm 43.8$  vs.  $641.4 \pm 42.2$ ,  $t = -2.21$ ,  $df = 17$ ,  $p = .041$ ) (Figure 1A). No differences in mean diffusivity or cross-sectional area were found.

In SPD subjects, FA strongly predicted Extraversion ( $F_{[2,8]} = 16.02$ ,  $p = .002$ ), but only on the right side ( $\beta = .89$ ,  $p = .001$  vs.  $\beta = .02$ ,  $p = .883$ ). Moreover, FA weakly predicted Agreeableness in SPD subjects ( $F_{[2,8]} = 4.38$ ,  $p = .052$ ), again only on the right side ( $\beta = .58$ ,  $p = .048$  vs.  $\beta = .33$ ,  $p = .225$ ), and there was also a trend toward right FA predicting Neuroticism ( $F_{[2,8]} = 4.64$ ,  $p = .046$ ;  $\beta = -.54$ ,  $p = .061$  vs.  $\beta = -.40$ ,  $p = .139$ ). Of note, there were no significant results for comparison subjects. Figure 1B illustrates the relationship between right UF FA and Extraversion.

Personality and UF anatomy alterations in SPD resemble those found in schizophrenia (Gurrera et al, 2000; Kubicki et al, 2002), and some clinical features of schizophrenia may reflect fronto-temporal connectivity abnormalities (McGuire and Frith, 1996). Personality changes in schizophrenia may also stem from altered brain function (Gurrera et al, 2005b). The present data suggest that reduced right UF integrity contributes to reduced extraversion in SPD.

Interestingly, the UF appears to mediate auto-noetic awareness, or awareness of oneself as a continuous entity across time, which is manifested in the ability to re-experience remembered events as part of one's past (Levine et al, 1998). In unstructured situations, auto-noetic awareness supports the formulation of goals and the behavioral oversight needed to attain them (Levine et al, 1998). Thus, individual differences in auto-noetic awareness could contribute to variation in human approach-avoidance behaviors, especially in unstructured social situations where individual differences in extraversion are most evident.

This study is limited by small sample size. Exclusive reliance on a self-report personality measure is also a potential limitation, though observer-based personality measures are subject to similar biases (Ozer, 1999).

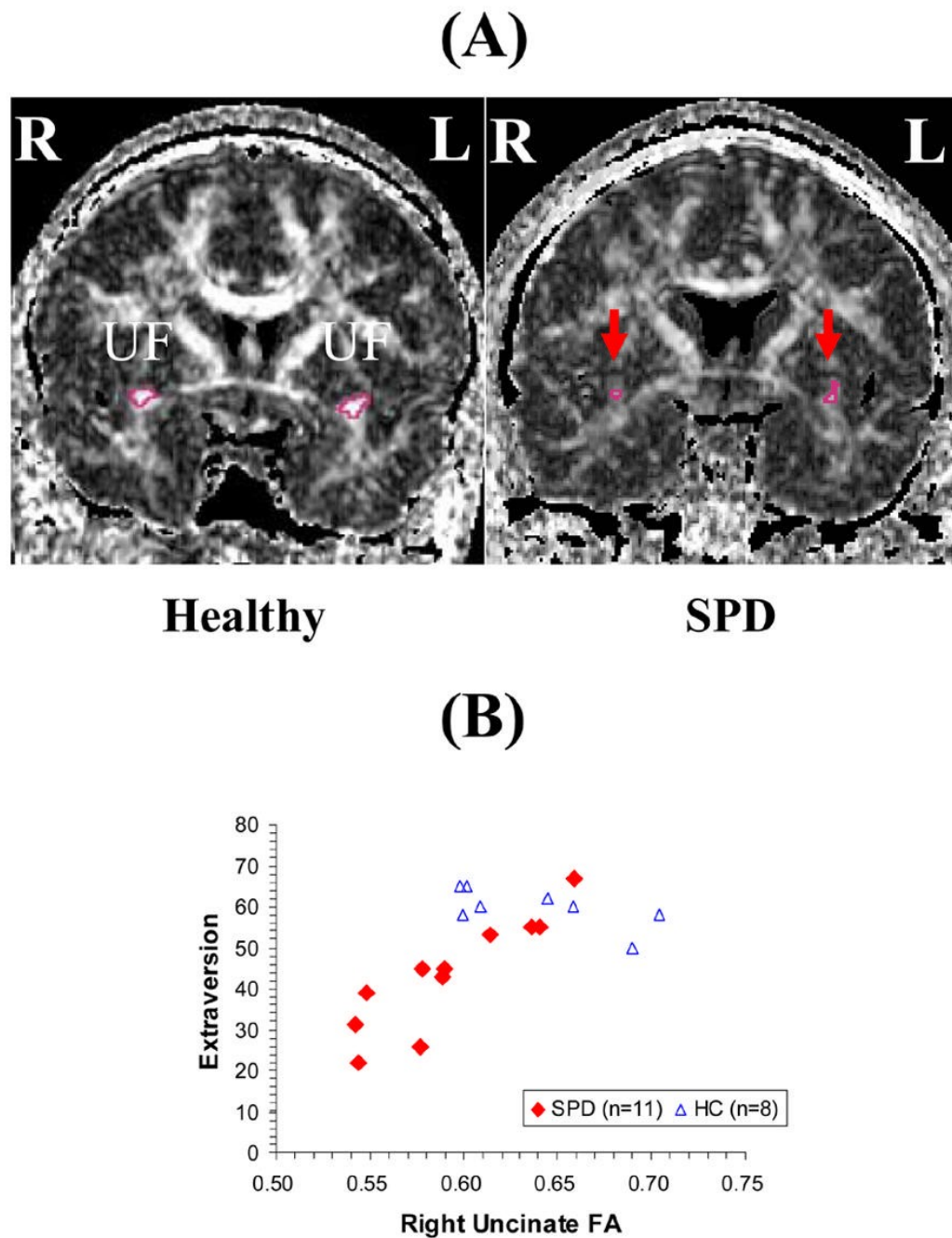
#### Acknowledgements

This study was supported in part by Department of Veterans Affairs REAP (RWM, MES) and Merit (RWM, MES) Awards; a Middleton Award from the Department of Veterans Affairs (RWM); National Institute of Health grants (K05 MH01110 and R01 MH50747 to MES, R01 MH052807 and R01 MH40799 to RWM, and RO3 MH068464 to MK), a grant from the National Alliance for Research on Schizophrenia and Depression (MK); a grant from the Welfide Medicinal Research Foundation, Japan (MN); and an NIH Roadmap Initiative Grant (U54 EB005149 to the National Alliance for Medical Imaging Computing, MES). The authors gratefully acknowledge the technical support of Hae-Jeong Park and Sylvain Bouix, and the research assistant support of Sunnie Kim, Erin Connor and Lisa Lucia.

#### References

- Costa, PT.; McCrae, RR. NEO PI-R: Professional manual (revised NEO personality inventory (NEO PI-R) and NEO five-factor inventory (NEO-FFI). Psychological Assessment Resources; Odessa FL: 1992.
- Gurrera RJ, Dickey CC, Niznikiewicz MA, Voglmaier MM, Shenton ME, McCarley RW. The five factor model in schizotypal personality disorder. *Schizophr Res* 2005a;80:243–251. [PubMed: 16168625]
- Gurrera RJ, Nestor PG, O'Donnell BF. Personality traits in schizophrenia: comparison with a community sample. *J Nerv Ment Dis* 2000;188:31–35. [PubMed: 10665458]

- Gurrera RJ, Nestor PG, O'Donnell BF, Rosenberg V, McCarley RW. Personality differences in schizophrenia are related to performance on neuropsychological tasks. *J Nerv Ment Dis* 2005b; 193:714–721. [PubMed: 16260924]
- Kubicki M, Westin CF, Maier SE, Frumin M, Nestor PG, Salisbury DF, Kikinis R, Jolesz FA, McCarley RW, Shenton ME. Uncinate fasciculus findings in schizophrenia: a magnetic resonance diffusion tensor imaging study. *Am J Psychiatry* 2002;159:813–820. [PubMed: 11986136]
- Levine B, Black SE, Cabeza R, Sinden M, McIntosh AR, Toth JP, Tulving E, Stuss DT. Episodic memory and the self in a case of isolated retrograde amnesia. *Brain* 1998;121:1951–1973. [PubMed: 9798749]
- McGuire PK, Frith CD. Disordered functional connectivity in schizophrenia. *Psychol Med* 1996;26:663–667. [PubMed: 8817700]
- Nakamura M, McCarley RW, Kubicki M, Dickey CC, Niznikiewicz MA, Voglmaier MM, Seidman LJ, Maier SE, Westin CF, Kikinis R, Shenton ME. Fronto-temporal disconnectivity in schizotypal personality disorder: a diffusion tensor imaging study. *Biol Psychiatry* 2005;58:468–478. [PubMed: 15978550]
- Ozer, DJ. Four principles for personality assessment. In: Pervin, LA.; John, OP., editors. *Handbook of Personality: Theory and Research*. 2. The Guilford Press; New York: 1999. p. 671.-686.



**FIGURE 1. The Uncinate Fasciculus (UF) and Extraversion in SPD**

(A) Line-scan diffusion tensor imaging (LSDTI) produced these contrasting coronal views of uncinate fasciculi (UF) in comparison (left) and SPD (right) subjects.

(B) Graph illustrates the relationship of extraversion to right uncinate fasciculus (UF) fractional anisotropy (FA) in SPD (Pearson  $r = .89, p = .0002$ ) and comparison ( $r = -.66, p = .075$ ) subjects.