



# New insights in swine model of ventricular tachycardia using quantitative myocardial tissue characterization

The Harvard community has made this article openly available. [Please share](#) how this access benefits you. Your story matters

Citation	Roujol, Sébastien, Tamer A Basha, Cory M Tschabrunn, Kraig V Kissinger, Mark E Josephson, Warren J Manning, Elad Anter, and Reza Nezafat. 2015. "New insights in swine model of ventricular tachycardia using quantitative myocardial tissue characterization." <i>Journal of Cardiovascular Magnetic Resonance</i> 17 (1): Q132. doi:10.1186/1532-429X-17-S1-Q132. <a href="http://dx.doi.org/10.1186/1532-429X-17-S1-Q132">http://dx.doi.org/10.1186/1532-429X-17-S1-Q132</a> .
Published Version	<a href="https://doi.org/10.1186/1532-429X-17-S1-Q132">doi:10.1186/1532-429X-17-S1-Q132</a>
Citable link	<a href="http://nrs.harvard.edu/urn-3:HUL.InstRepos:14065496">http://nrs.harvard.edu/urn-3:HUL.InstRepos:14065496</a>
Terms of Use	This article was downloaded from Harvard University's DASH repository, and is made available under the terms and conditions applicable to Other Posted Material, as set forth at <a href="http://nrs.harvard.edu/urn-3:HUL.InstRepos:dash.current.terms-of-use#LAA">http://nrs.harvard.edu/urn-3:HUL.InstRepos:dash.current.terms-of-use#LAA</a>

WALKING POSTER PRESENTATION

Open Access

# New insights in swine model of ventricular tachycardia using quantitative myocardial tissue characterization

Sébastien Roujol<sup>1\*</sup>, Tamer A Basha<sup>1</sup>, Cory M Tschabrunn<sup>1</sup>, Kraig V Kissinger<sup>1</sup>, Mark E Josephson<sup>1</sup>, Warren J Manning<sup>1,2</sup>, Elad Anter<sup>1</sup>, Reza Nezafat<sup>1</sup>

From 18th Annual SCMR Scientific Sessions  
Nice, France. 4-7 February 2015

## Background

Ventricular tachycardia (VT) is often responsible for sudden cardiac death and is generally triggered by the presence of reentry circuits related to a chronic myocardial scar. We have recently developed a novel swine model of VT, where sustained monomorphic reentrant VT can be induced in all animals. This new model offers exciting opportunities for better understanding the underlying substrate of VT, as well as for the development of new mapping and ablation strategies. In this study, we sought to provide in-vivo tissue characterization of this model using myocardial tissue characterization techniques of  $T_1$ ,  $T_2$  and high-resolution LGE.

## Methods

A novel swine model of reentrant VT was induced in 11 Yorkshire swine by 180 min balloon occlusion of the mid left anterior coronary artery. Each animal underwent an in-vivo CMR exam using a 1.5 T Philips scanner at  $52 \pm 13$  days after infarction, followed by an electrophysiology study with programmed stimulation to assess for VT inducibility. During imaging, each animal was sedated, intubated and mechanically ventilated. Native  $T_1$  mapping using MOLLI (1) and  $T_2$  mapping (2) were performed and followed by bolus injection of 0.2 mmol/kg of gadobenate dimeglumine and post-contrast  $T_1$  mapping using MOLLI. All these parametric sequences used ECG-triggered single shot acquisitions with balanced-SSFP imaging readout and the following parameters: (TR/TE=4.3/2.1ms, flip angle=35°( $T_1$  mapping)/85°( $T_2$  mapping)), FOV=360×276 mm<sup>2</sup>, voxel size=2×2 mm<sup>2</sup>,

slice thickness=8 mm, 10 slices ( $T_1$  mapping)/5 slices( $T_2$  mapping), SENSE factor=2). Finally, high resolution LGE (3) was performed using a free breathing navigator-gated inversion recovery gradient echo sequence with the following parameters (TR/TE/ $\alpha$ =6.5/3.0ms/25°, FOV=270×270×112 mm<sup>3</sup>, voxel size=1×1×1 mm<sup>3</sup>, compressed sensing factor=4). All imaging was performed in the short axis orientation. Analysis was performed offline using an in-house platform. The areas of enhancement in LGE data was used to visually guide a manual segmentation of the corresponding areas in all  $T_1$  and  $T_2$  maps. A similar approach was used to delineate an area of healthy myocardium all  $T_1$  and  $T_2$  maps.  $T_1$ / $T_2$  maps with artifacts were discarded from the analysis. Native  $T_1$  times and  $T_2$  times are reported for both “remote area” and “area of enhancement”.

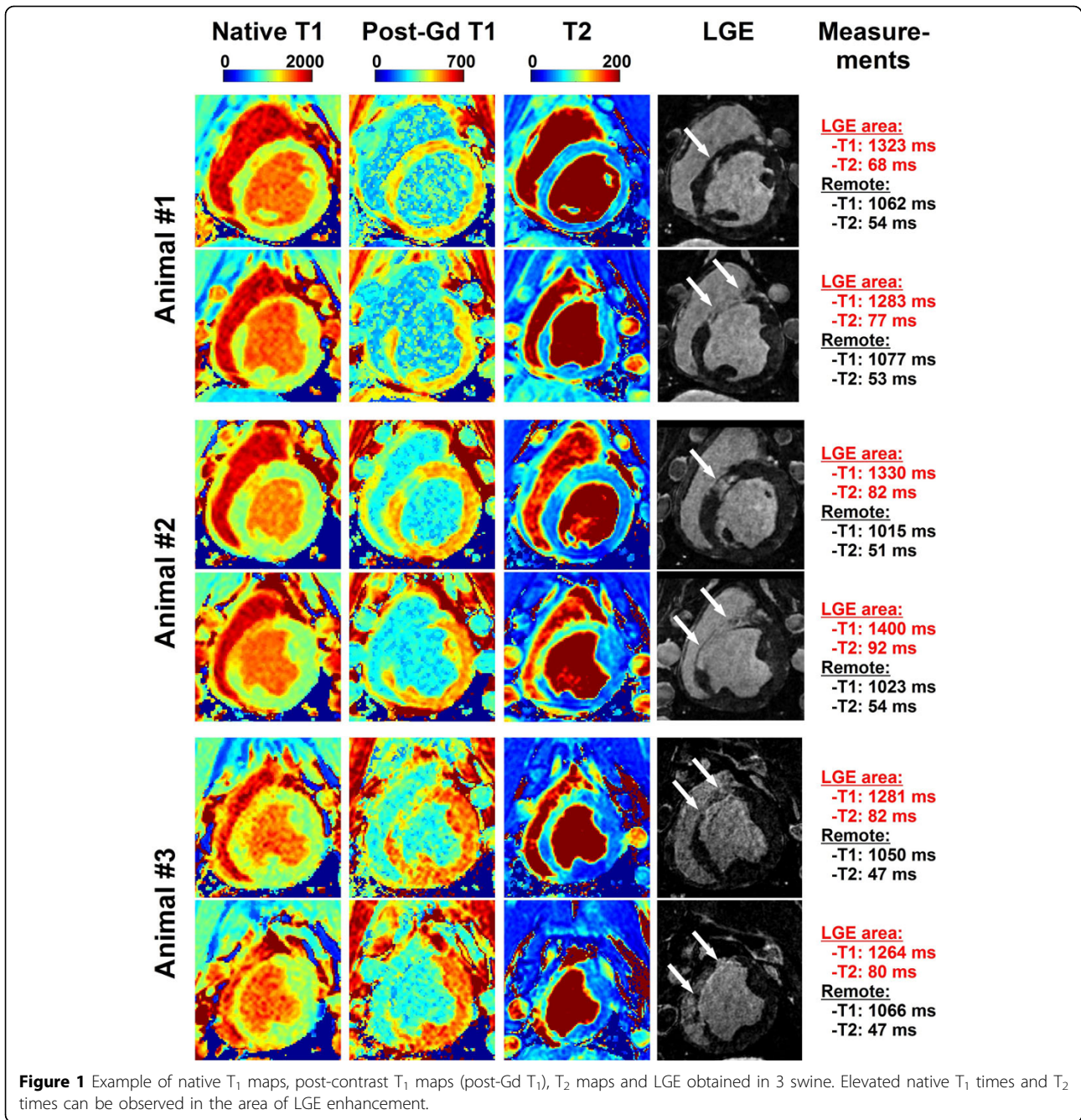
## Results

Sustained reentrant VT could be induced in all animals. In-vivo CMR revealed that areas with elevated native  $T_1$  times and  $T_2$  times were in good agreement with areas depicting reduced post-contrast  $T_1$  times and enhancement in LGE (Figure 1). Over all animals, area with enhancement as defined by LGE had higher native  $T_1$  times (1276±45 vs. 1047±29,  $p < 0.001$ ) and higher  $T_2$  times (85±6 vs. 52±4,  $p < 0.001$ ) than remote area (Figure 2).

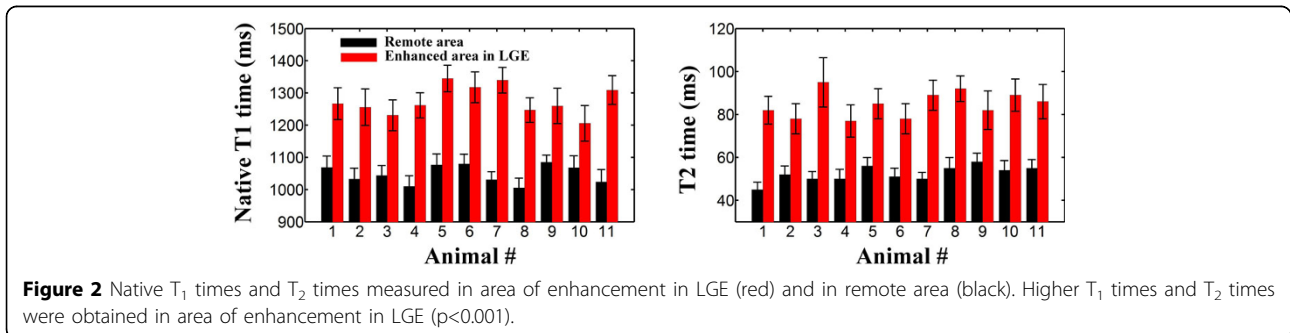
## Conclusions

In this swine model of reentrant VT, areas of LGE hyperenhancement are associated with elevated native  $T_1$  times and  $T_2$  times.

<sup>1</sup>Department of Medicine, BIDMC / Harvard Medical School, Boston, MA, USA  
Full list of author information is available at the end of the article



**Figure 1** Example of native T<sub>1</sub> maps, post-contrast T<sub>1</sub> maps (post-Gd T<sub>1</sub>), T<sub>2</sub> maps and LGE obtained in 3 swine. Elevated native T<sub>1</sub> times and T<sub>2</sub> times can be observed in the area of LGE enhancement.



**Figure 2** Native T<sub>1</sub> times and T<sub>2</sub> times measured in area of enhancement in LGE (red) and in remote area (black). Higher T<sub>1</sub> times and T<sub>2</sub> times were obtained in area of enhancement in LGE ( $p < 0.001$ ).

#### Authors' details

<sup>1</sup>Department of Medicine, BIDMC / Harvard Medical School, Boston, MA, USA. <sup>2</sup>Radiology, BIDMC / Harvard Medical School, Boston, MA, USA.

Published: 3 February 2015

#### References

1. Messroghli : *MRM* 2004.
2. Akçakaya : *MRM* 2014.
3. Akçakaya : *Radiology* 2014.

doi:10.1186/1532-429X-17-S1-Q132

**Cite this article as:** Roujol *et al.*: New insights in swine model of ventricular tachycardia using quantitative myocardial tissue characterization. *Journal of Cardiovascular Magnetic Resonance* 2015 17 (Suppl 1):Q132.

**Submit your next manuscript to BioMed Central  
and take full advantage of:**

- Convenient online submission
- Thorough peer review
- No space constraints or color figure charges
- Immediate publication on acceptance
- Inclusion in PubMed, CAS, Scopus and Google Scholar
- Research which is freely available for redistribution

Submit your manuscript at  
[www.biomedcentral.com/submit](http://www.biomedcentral.com/submit)

