



Ministry Of Health
Republic Of Indonesia



THE 1st REGIONAL SYMPOSIUM ON HEALTH RESEARCH AND DEVELOPMENT

Yogyakarta, October 9th-12th, 2012

PROGRAMME BOOK





PROGRAMME BOOK

Regional Symposium
On Health Research and Development

**Towards Universal Health
Coverage and Equity**

Yogyakarta-Indonesia

October 9-12, 2012



Contents

M E S S A G E	5
A. SYMPOSIUM COMMITTEE	6
B. SPEAKERS	7
B.1. KEYNOTE SPEAKERS	7
Professor Ali Ghufron Mukti - Vice Minister of Health, Republic of Indonesia	8
B.2. PLENARY SPEAKERS	9
Dr. Triono Soendoro - Ministry of Health, Republic Indonesia	9
Dr. Soewarto Kosen - NIHRD, Ministry of Health	10
C. ABSTRACT REVIEWERS	12
D. SYMPOSIUM OUTLINE	13
D.1. BACKGROUND	13
D.2. THEME	13
D.3. SUB THEME	13
D.4. AIM	14
D.5. OBJECTIVES	14
D.6. PLENARY SESSION	14
D.7. PARALLEL SESSION	14
D.8. SATELLITE SESSION	14
D.9. POSTER SESSION	14
E. PROGRAMME SCHEDULE	15
E.1. COMMERCIALIZATION IPR PRODUCT PROGRAMME SCHEDULE	22
E.2. APKESI CONGRESS & SCIENTIFIC MEETING PROGRAMME SCHEDULE	23
F. SYMPOSIUM INFORMATION	24
F.1. SECRETARIAT	24
F.2. REGISTRATION	24
• Pre Symposium	24
• Symposium	25
F.3. SYMPOSIUM NAME TAG	25
F.4. VENUE	25
F.5. WORKING AREA	26
F.6. LAYOUT OF INNA GARUDA HOTEL	27
F.7. OPENING AND CLOSING CEREMONY	29



F.8. SYMPOSIUM LUNCH	29
F.9. TRANSPORTATION	29
F.10. VISA	30
G. GUIDELINES FOR RESOURCE PERSONS	31
G.1. ABSTRACT	31
G.2. POSTER	31
H. POSTER PRESENTATION	33
I. GENERAL INFORMATION	37

MESSAGE

Dear colleagues,

We greatly welcome you to the 1st Regional Symposium on Health Research and Development hosted by National Institute of Health Research and Development (NIHRD) - Ministry of Health Republic of Indonesia in collaboration with Indonesian Health Researcher Association (APKESI). The symposium will be held on 11 to 12 of October 2012 in Yogyakarta, Indonesia. The symposium theme is focused on the issues of health research and development towards the universal coverage and equity.

This regional symposium is the first regional symposium organized by NIHRD, which previously had held a National Symposium (1st to 6th) during 2005-2010 and the First International Symposium in 2011.

We expect to host about 600-800 participants from various institutions / government agencies and private sector, including health services, research institutions, professional organizations, universities, polytechnics, and so forth. Since the symposium theme is also one of the global health issues, we also welcome the international participants, especially from the neighbouring countries or other countries which are interested to join in this symposium.

Head of NIHRD



Dr. dr. Trihono, MSc



A. SYMPOSIUM COMMITTEE

Advisory board

Minister of Health

Steering Committees

Dr. Trihono, M.Sc; Prof. Dr. Charles Surjadi, dr., MPH; Prof. Dr. drg. Wasis Budiarto, MS; Prof. Dr. M. Sudomo; Prof. Dr. dr. Herkutanto, SH; Prof. Dr. Supratman Sukowati; Prof. Dr. Komari; Prof. Dr. Umar Fahmi Ahmadi; Prof. Dr. Adang Bachtiar; Prof. Herman Sudiman; Drs. Ondri Dwi Sampurno, Apt, MS; dr. Siswanto, MPH; Anwar Musadad, SKM, M.Kes; Ria Sukarno, SKM, MCN; drg. Agus Suprpto, M.Kes; Indah Yuningprapti, SKM, M.Kes; Drs. Bambang Heryanto, M.Kes

Organizing Committees

Dede Anwar Musadad, SKM, M.Kes; Ria Sukarno, SKM, MCN; Endang Sri Widyaningsih, SKM, MKes; Nunik Kusumawardani, PhD; Nirmala Ahmad Ma'ruf, SKM, MSi; Sri Rahayu, S.Sos

Scientific Committees

dr. Soewarta Kosen, MPH, DrPH; Nunik Kusumawardani, PhD; Dra. Rachmalina Prasadjo, MScPH; dr. Trisa Wahyuni Putri Indra, M.Kes; Atmarita, MPH, DrPH; dr. Emiliana Tjitra, Ph.D

Pre-symposium

Prof. Dr. drs. Wasis Budiarto, MS; Dr. Sanjaya; Dr. Inswiasri SKM, M.Kes; Dr. drg. Idawati Abbas; Dr. drg. Magdarina; Dr. drg. Theresia Ronny; Endang Indriasih; Dr. Vivi Lisdawati

Symposium Sessions

Abas Basuni Djahari, DrPH; Dr. dr. Harimat Hendarwan, MKes; Dr. Niniek Lelly Pratiwi; dr. Telly Purnamasari, M.Epid; R. Bimo Satrio Rahardjo, SH, M.Kes, MH; dr. Karyana, MKes; Cansalony Tambunan, SE, M.Kes; dr. Nurbaity

Exhibition

Dra. Siwi Wresniati, M.Si; Dra. Mieke Agustin, M.Kes; Fachrudin Ali Ahmad, S.Sos, MKM; Ahdiyat Firmana, S.Sn; Suci Wiji Lestari, S.Sn; Dra. Erwin Mustikawati

Documentation and Publication

Indra Kurniawan, S.Kom, MKM; Lenny Wulandari, SKM; Umarjono, S.Sn; Febri Aryanto, S.Kom; Happy Chandraleka, ST

Protocol

Bambang Purwanto, SKM, MKM; Ardian Atmantoro, S.Pd, MM; Djunaedi, AMD; Cokky Dhian Ananda, SKM, MKM; Muhammad Fauzan, SKM, MPH

Logistic and Facility

Junediyono, SKM, MKM; Soengeng Basoeki, SKM; Sugiyanto, SKM, MScPH; Elfira Eka Putri, SKM, M.Kes; Ahmad Saikhu, MSc.Ph; Ciptadi; Zulfikri, ST

Secretariat

Cahaya Indriaty R, SKM, MKes; Evi Suryani, S.Kom; Novi Budiarti, SKM; Asrina Novianti, S.Ikom; Kurniatun Karomah, S.S.; Nariyah Handayani, S.Kom; Sri Lestari, S.Pd; Tetrian Widyanto, S.Kom; Dian Widiati, S.Sos;

B. SPEAKERS

B.1. KEYNOTE SPEAKERS

dr. Nafsiah Mboi, Sp.A, MPH - Minister of Health, Republic of Indonesia



Dr Nafsiah Mboi was born in Sengkang, South Sulawesi, on July 14, 1940. She specializes in pediatric from Faculty of Medicine, University of Indonesia in 1971. She completed her master degree on Master of Public Health from the Prince Leopold Institute of Tropical Medicine, Antwerp, Belgium in 1990.

Dr. Nafsiah married to Brigjen Ben Mboi who is also former Governor of Nusa Tenggara Timur (NTT) Indonesia. They had three sons and five grandchildren.

Her dedication towards health development lead to her obtaining national and international award. She achieved several awards such as: Ramon Magsaysay Award for Government Service Foundation of the Ramon Magsaysay Foundation, Manila, Philippines in 1986; Satya Bhakti Social Badges of the President of the Republic Indonesia in 1989; Fellow of the Australia-Indonesia Institute in 1993; , Asia HRD Congress in 2008; and Soetomo Tjokronogoro given by the PB-IDI in 2009.

Since her was joining as a civil service at the Ministry of Health in 1964, she was assigned in several positions, including the Head of the General Hospital, Ende, Flores (1964 -1968), Section Head of the Department of Health Licensing Office of NTT, Kupang (1979 -1980), Head of Guidance and Control Community Health Services (BPPKM) at the Regional Department of Health NTT , Kupang (1980-1985). Her current government career is as Minister of Health, Republic of Indonesia which begins in this 2012.

She had been a member of the DPR / MPR RI (1992-1997), a Chairman of the UN Committee on the Rights of the Child (1997-1999), the Director of the Department of Gender and Women's Health, WHO Geneva (1999 - 2002) and Secretary of the National AIDS Commission since 2006. More than 70 works in Indonesian and English have been published. A total of 20 of these are papers and articles.

She is also known as volunteer and community worker since still a student. In addition, she is also known as an activist for the field of family planning and then dedicate herself in efforts to control HIV and AIDS in Indonesia.

Committed to anti-discrimination and to support equality in society directs her became an activist of human rights. She was one of the founders of the National Commission for Child Protection Indonesia, Komnas HAM member and Vice Chairman of the National Commission for Women.

Professor Ali Ghufron Mukti - Vice Minister of Health, Republic of Indonesia

As for his educational background, after earning his medical degree from University of Gadjah Mada, Prof. Ghufron took his master degree at University of Mahidol, Bangkok with MSc degree on tropical hygiene. After completing his master degree, on 2000 Prof Ghufron finished his doctoral degree on public health from University of Newcastle, Australia. As part of his educational history, Prof. Ghufron has received an award as a research fellow from Brown University, USA



During his professional career, Prof. Ghufron has been appointed to several important positions. As an academician, some of the academic positions trusted to Prof. Ghufron are head of Public Health Division, Director of Gadjah Mada Medical Centre (health plan) department, and Director of health of Gadjah Mada Graduate Program on Health Financing and Health Insurance Management in the Faculty of Medicine, University of Gadjah Mada Yogyakarta. His current professional carrier is as the Vice Minister for Ministry of Health, Republic of Indonesia.

On 2008, at the age of 46, Prof. Ghufron was appointed to take the dean position in the faculty of medicine, University of Gadjah Mada and became the youngest dean of the Faculty of Medicine of the University of Gadjah Mada. Other than academic position, Prof. Ghufron was also have professional career as consultant for international agencies in the area of social protection, health finance, and health insurance.

Prof. Ghufron is quite productive as a writer and an experience speaker. Since the 90's, Prof. Ghufron has been published more than 30 publications and wrote several books. His publication consist several disciplines, not only about health financing/ insurance, but also in the field of public health and healthcare management, clinical epidemiology, etc. He was invited as lecturer and examiner in prominent national and international universities such as: University of Indonesia, University of Tokai in Japan, Asia University in Taiwan, and University Kebangsaan Malaysia.

Besides his professional career and academic activities, Prof. Ghufron is actively involved in many professional organizations both in the national and international scale. In some of the organization, such as the Indonesian Community and Public Health Doctor Association (PDK3MI), Indonesian Health Insurance and Social Security Expert (PAMJAKI), and Indonesian Health Economics Association (IHEA), Prof. Ghufron was appointed as Chairman of the organization. Internationally, Prof. Ghufron was appointed as Indonesian country representative for the South East Asian Public Health Institutes Network (SEAPHEIN) on 2007 and designated as Chairman of the ASEAN "One Health" on 2011.

B.2. PLENARY SPEAKERS

The following Invited Speakers will be presenting at IRSHRD 2012:

Dr. Triono Soendoro - Ministry of Health, Republic Indonesia

Triono Soendoro, obtained his medical degree from the University of Airlangga in 1979 while his M.Sc, M.Phil, and Ph.D., from Yale University in a row from 1987, 1988, and 1989. In 2001 he earned a Leadership Fellow from John Hopkins University.



He participated in six major non-degree international training. In 1987, he completed the Operations Research Training in Population Control in Hawaii University, USA. At the same year he also attended training Fellow in Reproductive Biology, Yale University, USA and Hormonal Assay Training in USA. In 1988 he participated in two trainings, the DNA sequencing technique, Yale University, USA and Workshop-Training in Reproductive Endocrinology, Boston, USA. In 1997, he participated in Executive Leadership Training.

He had been a lecturer at Yale University in the period of 1987-1990. While he is still listed as a lecturer at various universities, namely Johns Hopkins University, USA; and as an outstanding lecturer in several local universities such as Hasanudin University (UNHAS), Faculty of Public Health, Health Policy Administration: University of Indonesia (UI), Faculty of Public Health, and the University of Udayana (UNUD).

His professional career in Government institution and Ministry of Health started in Mataram General Hospital during 1980-1985. He had been appointed as the Head of the National Development Planning Agency until 2000. He was the Advisory Council of Minister of Health for policy formulation in the year 2001-2004. He was the Head of Centre for Human Resources Development (PPSDM) from 2004 to 2006 and as the Head of National Institute of Health Research and Development, from 2006 to 2009. His current professional career is as a Minister of Health Senior Advisor for Health Risk Factor Protection.

Professor Charles Surjadi - Faculty of Medicine Atmajaya University



Professor Charles Surjadi was born in Jakarta on 16 June 1951. Graduated in 1976 from the Faculty of Medicine, University of Indonesia in Jakarta as a physician, in 1981 received his Master of Public Health of the University of Philippine in Manila, and in 1997 received his doctorate from the Faculty of Medicine, University of Amsterdam. In 2002 received his public health professor at the Catholic University School of Medicine (Unika) Atmajaya.

Since 1977 a lecturer at the Faculty of Medicine, Unika Atma Jaya Jakarta until now. In 1982 he became the head of the village Atmajaya Balkesmas Penjaringan, Since 1986 until today he is active as a consultant of healthy city and Urban health problems for the Ministry of Health, WHO, UN and the World Bank, a technical adviser in the UN Habitat program especially with regard to urban problems water and sanitation.

In 1989 he developed the Urban Health Study Group of Unika Atma Jaya which later evolved into Unika Atma Jaya Center for Health Research. Since 2007, he actively explore the social determinants

of health and become members of the Steering Committee Asia Pacific Global Health Equity Action Network

In connection with professional organization he co-founded the National Epidemiological Network (JEN). In 2009 up to 2012 he acts as one of the chief Association of Indonesian Public Health doctors, while also actively a member of the committee of Indonesian Public Health Association at the same time since 2009 was appointed by the governor of Jakarta as member of research board of Government of Jakarta.

Professor Laksono Trisnantoro



Born in Yogyakarta on August 27, 1961 and married to dr. Ida Safitri Laksanawati, Sp.A and has two daughters. Lecturer at the Faculty of Medicine and the Department of Public Health, Faculty of Medicine, University of Gadjah Mada. During 1998 - 2009 became a Director of the Center for Health Services Manajmen Faculty of Medicine, at the same time still work as Chief Editor Journal of Health Services Management.

S1 degree in the Faculty of Medicine (1987), received a Master of Science (MSc) in Health Economics, Department of Economic, University of York, United Kingdom (1989), Ph.D. Program in Health Policy Unit, London School of Hygiene and Tropical Medicine, joint program with London School of Economics, University of London, United Kingdom (1993) and Post-Doctoral candidate at Harvard Medical School, Department of Social Medicine, Boston, United State (2002). Title of Professor at Gadjah Mada University in 2006.

Currently active as Doctoral Program Administrator Faculty of Medicine. As a consultant, management and research in the area of health in economic and strategic aspects of the systems and institutions in the health sector. Various articles have been written in various journals in the country as well as international publications.

Laksono Trisnantoro also wrote several books, namely Applications of Economics in Hospital Management, published by Stanford University Press (2004) and Strategic Aspects of the Hospital Management, published by Andi Offset (2005). As an editor and write a book together with other colleagues in the Health Decentralization in Indonesia and Function Changes in Government 2001 - 2003: Is a trial period? published by Gadjah Mada University Press (2005), Implementation of Decentralization of Health in Indonesia from 2000 to 2007: Review of Experience and Future Scenarios, published by BPF (2009).

Dr. Soewarta Kosen - NIHRD, Ministry of Health



Dr. Soewarta Kosen is a Senior Researcher and Coordinator for Health Economics and Policy Analysis in NIHRD. He completed his medical doctor in University of Indonesia, School of Medicine, Jakarta, Indonesia on 1976. He obtained his master degree on Master of Public Health in University of the Philippines, Manila during 1982. He completed his doctoral degree as a Doctor of Public Health from Johns Hopkins University, School of Hygiene and Public Health, Baltimore, MD., USA in 1990.

He was a chair of Council of NIHRD Researchers from 2010 to 2011. He was the Chairman of Scientific Research Commission, NIHRD, MOH from 2006 to 2010. He was a Consultant

to GTZ for Quality Management at Zainoel Abidin Hospital, Banda Aceh from 2005 to 2009. He was also a Deputy Team Leader, Assistance in the Preparation of Sector Programme Health (funded by KfW/ Kreditanstalt fur Wiederaufbau) in 2001 & 2002.

He has been appointed as Associate Chairman at National Commission on Tobacco Control since 2007. He also has been a Senior Consultant at Bhakti Mandiri Persada Makmur Inc. (Health Consultant Firm) since 2000 until at present.

At the current time he has been a Principal Investigator, Development of Indonesian Sample Registration System (SRS), funded by Global Fund from 2011-2015.

He has published research papers in many scientific journals and conferences. Few of his publications are Tuberculosis mortality differentials in Indonesia during 2007-2008; Evidence For Health Policy And Monitoring. *Int J Tuberc Lung Dis* (2011) 15(12): 1608-1613.

Professor Umar Fahmi Ahmadi - Indonesian Health Researcher Assosiation

Professor Umar Fahmi Achmadi was graduated from Faculty of Medicine University of Indonesia. He obtained his MPH from University of the Phillipines and his PhD from Griffith University Australia.

He was the Director General of Communicable Disease Control and Environmental Health at the Ministry of Health of Republic of Indonesia (from 2000-2005) and Director General of National Institute of Health Research and Development, Ministry of Health (1996-2000).



He has been working as lecturer and professor at the University of Indonesia and some other universities in Indonesia. He has completed a lot of research on many issues in public health and environmental pollution as well as communicable disease control in particular in the developing countries. During his services as the Director General of the CDC and EH he was engaged with the national management of several disasters and major outbreaks including SARS, Avian Influenza, Polio, and the Tsunami in Aceh.

Professor Achmadi was the president of the Indonesian Occupational Health Association, vice-president of the Indonesian Association of Public Health and International Editor of the Japan-based *Journal of Occupational Health*. He has both Indonesian and International journal publications.



C. ABSTRACT REVIEWERS

1. Prof. Dr. Umar Fahmi Ahmadi, MPH, Ph.D
2. Prof. Dr. Drs. Wasis Budiarto, MS
3. Prof. Dr. Charles Surjadi, Dr., MPH
4. Prof. dr. Agus Suwandono, MPH, Dr.PH
5. Dr. Soewarta Kosen, MPH, Dr.PH
6. Dr. Atmarita, MPH, Dr.PH
7. Dr. Abas Basuni, M.Sc, Ph.D
8. Dr. Emiliana Tjitra, M.Sc, Ph.D
9. Dr. Dra. Vivi Lisdawati, Apt, MS
10. Dr. Damar Triboewono, M.S
11. Dr. Ir. Anies Irawati, M.Kes
12. Dr. drg. Magdarina Destri Agtini, M.Sc
13. Dr. drg. Theresia Ronny
14. Dr. Siswanto, MPH, DTM
15. Drs. Ondri Dwi Sampurno, Apt, MS
16. Dede Anwar Musadad, SKM, M.Kes
17. Nunik Kusumawardhani, Ph.D
18. dr. Suhardi, MPH
19. Dra. Rr. Rachmalina Soerachman, M.Sc.PH

D. SYMPOSIUM OUTLINE

D.1. BACKGROUND

Many countries including Indonesia have directed the health system development toward universal coverage of health services concerning equity and equality. A comprehensive concept of universal health coverage includes all dimensions of health services such as promotion, prevention, medication and rehabilitation contribute to equity and equality aspects of health system. Best practice of universal health coverage relates to strong supportive health system as well as adequate health resources and local government support.

As part of the sustainable development concept, health is constantly related to most of the development sectors. Ecological health approach explains that health closely associates with social determinants, cultural, environmental and economical factors. Social and cultural determinants of health can be the underlying factors to elucidate of health risk behaviour for certain population groups. Meanwhile society living in poverty or lower income tends to suffer the most under the inequal and inequity health system. Environmental is strongly associated to the public health issues such as vector-borne diseases, certain non-communicable diseases as well as natural disaster related diseases. Emerging and re-emerging diseases and changes in diseases pattern appear as the environmental change particularly due to the impact of climate change that occurs in all part of the world.

Consequently, improving health status also refers to the need to improve the social and economy determinants, ensuring equal and equity in health services as well as adjusting the health system toward the universal coverage. Therefore this symposium aims to provide best quality studies or evidences on those related issues which may contribute to policy making process for better community health status in Indonesia as well as in our neighbouring countries. Best quality studies in those related issues give strong evidence to support the health system reform and implementation of universal health coverage in improving health status in Indonesia as well as in neighbouring countries.

In addition, this regional symposium can be used as a media for countries to interact, communicate and plan future collaboration in health research and development which is directed toward best effective resolution for regional as well as global health issues.

D.2. THEME

Towards Universal Health Coverage and Equity

D.3. SUB THEME

1. Challenges and threat toward universal health coverage implementation
2. Health system strengthening
3. Determinants of health (environmental health, socio-cultural, nutrition, non communicable diseases, communicable diseases)



D.4. AIM

Dissemination of health research findings for future health research and programs towards the universal health coverage implementation

D.5. OBJECTIVES

1. To disseminate research findings that had been conducted by National Institute of Health Research and Development (NIHRD) as well as from other national and international institutions in order to support countries health policy and programs.
 2. To build communication and coordination between decision makers and research institutions in health sectors, other related sectors in Indonesia as well as with other neighbourhood countries.
 3. To enhance knowledge and skill among the researchers in sharing the scientific publications and research findings to the society.
 4. To disseminate research findings from NIHRD and other countries through scientific exhibition as well as through television media.
-

D.6. PLENARY SESSION

The Plenary session, which serves as a unifying platform, is held at the beginning of first Symposium day and at the ending of second Symposium day for all participants. The plenary speakers will deliver speech on specific topics under three sub-themes.

D.7. PARALLEL SESSION

The Parallel session is the main part of the Symposium, which will deliver oral abstract presentations. There will be 3 parallel sessions which cover around 55 oral presentations during the Symposium. Each presentation has been grouped into specific topics that reflect to three sub-themes raised in the plenary sessions.

D.8. SATELLITE SESSION

The Satellite session will be hosted by Indonesian Health Researcher Association (IHRA/APKESI) and Intellectual Property Rights (IPR/HKI) Commission on NIHRD. There will be 2 satellite sessions during the symposium, the commercialization of NIHRD IPR and Congresses and scientific meetings APKESI.

D.9. POSTER SESSION

Specific universal health coverage and equity related themes will be displayed for 2 days. Presenters will be at their posters at the designated time to provide information and answer questions on their poster presentations.

E. PROGRAMME SCHEDULE

TIME	ACTIVITY	SPEAKER	MODERATOR/CO/PI C	LOCATION
PRE-SYMPOSIUM : Tuesday - October 9, 2012				
08.00-09.00	Registration		Organizing Committee	Lobby
09.00-17.00	Pre-Symposium: Workshop and Training (day 1): 1. Good Clinical Practice (GCP) 2. Public Health Law 3. Equity Analysis	1. NIHRD & Quintiles 2. Ministry of Health & University of Indonesia 3. NIHRD & World Bank	Organizing Committee	1. Kalasan 2. Mendut 3. Prambanan
Wednesday - October 10, 2012				
09.00-16.00	Pre-Symposium: Workshop and Training (day 2)		Organizing Committee	
SATELLITE SYMPOSIUM				
Tuesday - October 9, 2012				
11.00-13.00	Registration		Organizing Committee	Lobby
13.00-21.00	IPR/HKI Commercial Exhibition of NIHRD Products	NIHRD IPR Commission	NIHRD IPR Commission	Sambisari
19.30-22.00	Indonesian Health Researcher Association / APKESI Congress	APKESI	APKESI	Nakula
Wednesday - October 10, 2012				
08.30-22.00	APKESI Congress & Scientific Meeting	APKESI	APKESI	Nakula
09.30-21.00	IPR Commercial Exhibition of NIHRD Products	NIHRD IPR Commission	NIHRD IPR Commission	Sambisari
EXHIBITION & POSTER SESSION : Thursday to Friday - October 11-12, 2012				
SYMPOSIUM				
Thursday - October 11, 2012				
08.00-09.00	Registration		Organizing Committee	Lobby
09.00-09.20	National Anthem & Welcome Dance Opening Ceremony: Committee Report (Head of NIHRD)		Organizing Committee	Borobudur
09.20-09.45	Welcome Speech Photo Session	Minister of Health, RI		
09.45-10.00	Press Conference	1. Minister & Vice Minister of Health 2. Dr. dr. Trihono, M.Sc - DG of NIHRD		
10.00-10.15	Coffee- break			
10.15-11.00	Keynote Speech "Social Security Executing Agency / BPJS"	Professor Ali Ghufon Mukti - Vice Minister of Health, RI	Organizing Committee	Borobudur
11.00-12.15	Plenary Session 1 "Challenges and Threat toward Universal Coverage"		Moderator : Professor Umar Fahmi Ahmadi Notulen : dr. Nurbaity, M.Kes Asrot : Linda Nilawati, SKM Pembawa Acara : dr. Telly P., M.Epid	
	1. WHO Support on Universal Health Coverage Implementation	Dr. Khanchit Limpakarnjanarat - WHO		
	2. Experience and Success Factors of Universal Health Coverage Implementation in India	Thailand Dr. Priya Balu – Director of Universal Health Initiative, Public Health Foundation of India		
	3. District Range Within Health Facility Index in The PHC Level	Dr. dr. Trihono, M.Sc		
12.15-13.30	Poster Session			
LUNCH				

13.30-16.00	Parallel Session 1 1. Challenges and Threat toward Universal Coverage	<ol style="list-style-type: none"> 1. STREET LEVEL BUREAUCRAT DISCRETION Arief Priyo Nugroho - Centre For Humanities, Health Policy And Community Empowerment, Nihrd, Ministry Of Health 2. TRANSLATING RESEARCH TO POLICY: A CASE STUDY OF NOT FOR PROFIT HOSPITALS IN INDONESIA Mia Urbano - Nossal Institute for Global Health, University of Melbourne 	Moderator : <ol style="list-style-type: none"> 1. Prof. Agus Suwandono 2. DR. dr. Harimat H. 3. dr. Karyana, M.Kes Notulis : <ol style="list-style-type: none"> 4. dr. Nurbaiti, M.kes 5. Mitri Rahmawati, SKM, M.Kes 	Kalasan
	2. Health System Strengthening	<ol style="list-style-type: none"> 1. EVALUATION OF PSYCHOLOGIST PLACEMENT TO PROVIDE INTEGRATIVE MENTAL HEALTH SERVICE IN PRIMARY HEALTH CARE (PHC) IN SLEMAN YOGYAKARTA, 2011 Siti Isfandari - NIHRD 2. CORRELATION OF KATG CATALYTIC ACTIVITY WITH ISONIAZID RESISTANCE TO A CLINICAL ISOLATE OF Purkan - Chemistry Department/ Airlangga University 3. THE INDICATORS OF CHEMICALLY WATER POLLUTION MODELING (BOD) WITH GEOGRAPHICALLY WEIGHTED REGRESSION Ronny Koesnariyanto - BBTCLPP Surabaya 4. RELATED FACTORS TO MIDWIFE'S COMPLIANCE IN PARTOGRAPH FULFILLMENT OF CHILDBIRTH PROCESS AT PRACTICE MIDWIFE CLINIC IN EAST BEKASI AREA IN 2012 Aprilya Sintarini - Respati Indonesia University 5. THE USE OF CLINICAL PATHWAY AND STROKE REGISTRY FOR IMPROVING QUALITY OF CARE IN STROKE PATIENTS Rizaldy Pinzon - Bethesda Hospital Yogyakarta 6. PARTIAL LEAST SQUARE PATH MODELING (STUDI KASUS QUALITY ASSURANCE RUMAH SAKIT PONEK BERDASARKAN DATA RIFASKES 2011) Sigit Ari Saputro, SKM - Unair Surabaya 7. Management & Technical Assistance Facility: Memberdayakan & Mendayagunakan Konsultan Kesehatan Dalam Negeri DR. Bambang Hartono, SKM, MSc 	Moderator : <ol style="list-style-type: none"> 1. drg. Agus Suprpto, M.Kes 2. Prof. Supratman 3. Nagiot C., SKM, ME Notulis : <ol style="list-style-type: none"> 4. Uully Adhie M., S.Si, Apt 5. Heny Lestari, SKM 	Mendut
	3. Determinant of Health (Environmental Health, Socio-cultural, Nutrition, NCD, CD) <ul style="list-style-type: none"> • Basic Research • Applied Research 	<ol style="list-style-type: none"> 1. THE EFFECT OF EDUCATIONAL LEVEL, KNOWLEDGE ABOUT ENVIRONMENTAL HEALTH, AND HEALTHY LIVING BEHAVIOR TOWARDS YOUNG (10-24 YEARS OLD) POPULATION'S HEALTH STATUS IN CENTRAL JAKARTA Julianty Pradono - NIHRD 2. FACTORS ASSOCIATED WITH THE SEVERITY OF CARIES EXPERIENCE IN THE PROVINCE OF BANGKA BELITUNG ISLAND, INDONESIA Ch. M. Kristantigunarjo Gunarso - NIHRD 3. INSIDENSI DEMAM BERDARAH DENGUE (DBD) DI KOTA KUPANG, PROPINSI NTT, 1998 – 2007 Wanti Ndoen - Environmental Health Academy 4. APPLICATION OF OCCUPATIONAL HEALTH AND SAFETY (OHS) MANAGEMENT WEARING MASK AS PPE AND MELATONIN IN LOWERING LEVELS OF SOD, H2O2 AND TOTAL INFLAMMATORY CELLS AT 	Moderator : <ol style="list-style-type: none"> 1. DR. Abas Basuni 2. DR. Anies Irawati 3. R. Bimo Satrio R., SH, MH, M.Kes Notulis : <ol style="list-style-type: none"> 4. dr. Telly P., M.Epid 5. Indri Rooslamati, S.Si, Apt 	Prambanan

		<p>LABORATORY RATS STRAIN WISTAR EXPOSED TO COAL DUST DAY OR NIGHT Qomariyatus Sholihah - Lambung Mangkurat University</p> <p>5. SPATIAL PATTERN OF SCHISTOSOMIASIS SNAILS DISTRIBUTION USING REMOTE SENSING DATA AND GEOGRAPHIC INFORMATION SYSTEM IN LINDU SUB-DISTRICT , SIGI DISTRICT, CENTRALSULAWESI PROVINCE, INDONESIA Mujiyanto - Balai Litbang P2B2 Donggala</p> <p>6. PROFILE OF MOTHER'S HEALTH AND NUTRITIONAL STATUS DURING PREGNANCY ON STUNTED AND LOW BIRTH WEIGHT BABIES Fitrah Ernawati - Center For Applied Health Technology And Clinical Epidemiology</p> <p>7. THE ENERGY INTAKE AND ENERGY EXPENDITURE OF PREGNANT WOMWEN:Longitudinal study Yuniar Rosmalina - PTTK&EK</p>		
	4. Determinant of Health	<p>1. VITAMIN D DEFICIENCY AMONG CHILDREN 2-12 YEARSOLD IN INDONESIA (DEFISIENSI VITAMIN D PADA ANAK 2-12 TAHUN DI INDONESIA) Basuki Budiman - NIHRD</p> <p>2. CAUSE OF DEATH AND CHALLENGES FACED BY ELDERLY CAUSE OF DEATH AND CHALLENGES FACED BY ELDERLY POPULATION IN INDONESIA ACCORDING TO 2007 BASELINE HEALTH RESEARCH Sarimawar Djaja - PTIKM, NIHRD, Ministry of Health</p> <p>3. KARAKTERISTIK DAN LAMA PERAWATAN PENDERITA HUMAN IMMUNODEFICIENCY VIRUS / ACQUIRED IMMUNE DEFICIENCY SYNDROME (HIV/zAIDS) DEWASA DI RSPI SULIANTI SAROSO Heni Kismayawati - Balitbangkes Kemenkes RI, Pusat Teknologi Terapan Kesehatan dan Epidemiologi Klinik</p> <p>4. LESS VEGETABLES AND NUTS-SEEDS-PEAS CONSUMPTION ARE ASSOCIATED WITH HIGH LEVEL OF LIPID PEROXIDATION IN TYPE 2 DIABETES MELLITUS Nazarina - Pusat Teknologi Terapan Kesehatan dan Epidemiologi Klinik, Balitbangkes</p> <p>5. THE ASSOCIATION OF JAK2 V617F MUTATION AND CLINICAL SEVERITY OF PHILADELPHIA CHROMOSOME-NEGATIVE MYELOPROLIFERATIVE NEOPLASMS PATIENTS Fanti Saktini - Medical Faculty Diponegoro University</p> <p>6. INFLUENZA CASES FROM SURVEILLANCE ACUTE RESPIRATORY INFECTION , 2011 Krisna N A Pangesti - Center for Biomedical and Basic Technology of Health, NIHRD</p> <p>7. FACTOR INFLUENCE MIDWIVES REFERING PREGNANT WOMEN TO UNDERGO VCT CLINICS : STIGMA IS AROUND US Dinar Lubis - Udayana University</p>	<p>Moderator :</p> <ol style="list-style-type: none"> 1. Prof. Wasis Budiarto 2. DR. drg. Niniek L.P., M.Kes 3. DR. Ir. Dewi Permaesih, M.Kes <p>Notulis :</p> <ol style="list-style-type: none"> 4. drg. Lelly Andayasari, M.Kes 5. Lina Rustanti 	Indonesia-Malaysia
16.00-19.30	BREAK			
19.30-21.00	EXPERT MEETING			

Friday - October 12, 2012				
08.00-10.00	Parallel Sessions 2			
	1. Determinant of Health	<ol style="list-style-type: none"> ENVIRONMENTAL HEALTH RISK ASSESSMENT TO DETERMINE SANITATION RISK AREA IN JEMBER DISTRICT IN SUPPORTING MILLENNIUM DEVELOPMENT GOALS Khoiron - Faculty of Public Health, Jember University UNDERSTANDING INFANT MORTALITY IN JEMBER REGENCY Dwi Martiana Wati - Public Health Faculty Of Jember University THE ASSOCIATION BETWEEN SEX, NUTRITIONAL STATUS, PHYSICAL ACTIVITY, AND NUTRITION INTAKES WITH PHYSICAL FITNESS STATUS OF SENIOR HIGH SCHOOL STUDENTS IN KEBUMEN DISTRICT, CENTRAL JAVA PROVINCE, INDONESIA 2011 Eskaning Pawestri - PUSKA FKM UI LYMPHATIC FILARIASIS EPIDEMIOLOGY IN KOTA BESI SUBDISTRICT, KOTAWARINGIN TIMUR DISTRIC CENTRAL BORNEO PROVINCE Budi Setiawan - Tropical Medicine, Faculty of Medicine, University of Gadjah Mada QUALITY OF LIFE OF THE ELDERLY IN SUMBERSARI SUB-DISTRICT JEMBER, 2012: QoL Comparison Based On Their Sosio Demographic And Sosio Economic Characteristic. Ratna Frenty Nurkhalim - Jember University PREVALENCE AND DETERMINANT OF OBESITY AMONG ELDERLY IN JAKARTA Regina Satya Wiraharja - Atma Jaya Catholic University 	<p>Moderator :</p> <ol style="list-style-type: none"> Prof. Agus Suwandono DR. dr. Harimat H. dr. Karyana, M.Kes <p>Notulis :</p> <ol style="list-style-type: none"> dr. Nurbaiti, M.kes Mitri Rahmawati, SKM, M.Kes 	Kalasan
	2. Health System Strengthening	<ol style="list-style-type: none"> MODEL OF TRAFFIC ACCIDENT SURVEILLANCE SYSTEM IN SURABAYA, 2012 Arief Hargono - School of Public Health, Airlangga University NEIGHBOURHOOD EFFECT IN PNEUMONIA IN INDONESIA CHILDREN UNDER-5: A MULTILEVEL ANALYSIS Rizanda Machmud - Faculty of Medicine, Andalas University CLEAN WATER AND TOILET AVAILABILITY SUPPORTED MULTIPLE GOALS AND TARGETS OF MILLENNIUM DEVELOPMENT GOALS'. A CASE REPORT ON EAST LOMBOK ELEMENTARY SCHOOLS, INDONESIA. Dwi Susilowati – NIHRD COST OF MENTAL HEALTH PROGRAM IN PRIMARY LEVEL: DEMONSTRATION OF COST STUDY IN ACEH Sri Idaiani - Center for Applied Health Technology and Clinical Epidemiology. KETAHANAN PANGAN RUMAH TANGGA, KONSUMSI DAN STATUS GIZI KELOMPOK RENTAN (BALITA, WANITA, LANSIA) DI KABUPATEN PRIORITAS MASALAH KERAWANAN PANGAN DI INDONESIA Dr. Ir. Annis Catur Adi, M.Si 	<p>Moderator :</p> <ol style="list-style-type: none"> drg. Agus Suprpto, M.Kes Prof. Suprman Nagiot C., SKM, ME <p>Notulis :</p> <ol style="list-style-type: none"> Ully Adhie M., S.Si, Apt Henry Lestari, SKM 	Mendut

	<p>3. Determinant of Health</p>	<ol style="list-style-type: none"> 1. A DECADE OF INEQUALITY IN UNMET NEED FAMILY PLANNING IN INDONESIA (1997-2007) Ni'mal Baroya - Department of Epidemiology, Biostatistics and Population - Public Health Faculty - University of Jember 2. RELATIONSHIP BETWEEN LIFESTYLE WITH THE QUALITY OF LIFE OF THE ELDERLY IN STABAT DISTRICT LANGKAT REGENCY 2012 Setia Sihombing - Respati University Of Indonesia 3. LEVEL OF RADIATION EXPOSURE IN SEVERAL HOSPITALS IN INDONESIA Frans Suharyanto - Centre for Applied Health Technology and Clinical Epidemiology, NIHRD, MoH 4. MODEL PREDIKSI INDEKS MASSA TUBUH REMAJA BERDASARKAN RIWAYAT LAHIR DAN STATUS GIZI ANAK(STUDI LONGITUDINAL IFLS 1993-2007) Demsia Simbolon - Politeknik Kesehatan Bengkulu 5. DIARRHEA OUTBREAK IN KAIMANA DISTRICT, WEST PAPUA PROVINCE: A WATER RESOURCES EXAMINATION Antonius Oktavian - Institute of Research and Development for Biomedicine 	<p>Moderator :</p> <ol style="list-style-type: none"> 1. DR. Abas Basuni 2. DR. Anies Irawati 3. R. Bimo Satrio R., SH, MH, M.Kes <p>Notulis :</p> <ol style="list-style-type: none"> 4. dr. Telly P., M.Epid 5. Indri Rooslamati, S.Si, Apt 	<p>Prambanan</p>
	<p>4. Determinant of Health</p>	<ol style="list-style-type: none"> 1. THE ANTIBACTERIAL AND ANTIOXIDANT ACTIVITIES OF DRACONTOMELON dao EXTRACT Nurul Hasanah - FK UNMUL 2. POTENCY OF QUERCETIN-3-O-GLUCOSIDE (Q3G) DAN QUERCETIN-4'-O-GLUCOSIDE (Q4G) ISOLATED FROM MIMBA LEAVES (Azadirachta indica A.Juss) TO THE GLUCOSE UPTAKE OF RAT INTESTINAL MEMBRANE Enny Rohmawaty - Pharmacology and theurapeutic department, Faculty of Medicine, Universitas Padjadjaran 3. INFEKSI TRANSOVARIAL VIRUS DENGUE PADA NYAMUK Aedes aegypti DAN Aedes albopictus DI KOTA KUPANG Wanti Ndoen - Environmental Health Academy 4. NUTRITIOUS RICE, PROPERLY AND SAFELY CONSUMED PRESERVED IN MAGIC- COM FOR 24 HOURS Tutik Wahyuni - Lecturer Department of Nutrition, Ministry of Health Polytechnic Semarang, Indonesia 5. ARTEMISININ PLUS NAPHTHOQUINE VERSUS DIHYDROARTEMISININ PLUS PIPERAQUINE IN ADULT SUBJECTS WITH PLASMODIUM VIVAX INFECTION IN INDONESIA Armedy Ronny Hasugian - National Institute Health and Research Development Ministry of Health Indonesia 6. THE ABILITY OF RHIZOPUS OLIGOSPORUS MOULD TO SYNTHESIS THE VITAMIN B1, B2, B12 DAN FOLIC ACID ON THE PALM OIL WASTE SUBSTRAT IN THE SOLID FERMENTATION) Drs. Erwin Affandi Erwin - PTTK dan Epid Klinik 	<p>Moderator :</p> <ol style="list-style-type: none"> 1. Prof. Wasis Budiarto 2. DR. drg. Niniek L.P., M.Kes 3. DR. Ir. Dewi Permaesih, M.Kes <p>Notulis :</p> <ol style="list-style-type: none"> 4. drg. Lelly Andayasari, M.Kes 5. Lina Rustanti 	<p>Indonesia-Malaysia</p>
<p>Coffee-Break</p>				

10.30-12.00	Parallel Sessions 3			
	1. Determinant of Health	<p>1. SEA CUCUMBER CRACKERS, NUTRITIOUS SNACKS THAT ARE SAFE FOR CONSUMPTION AND CAN COPE WITH CONSTIPATION Tutik Wahyuni - Lecturer Department of Nutrition, Ministry of Health Polytechnic Semarang, Indonesia</p> <p>2. EFFICACY AND SAFETY OF ARTESUNATE - AMODIAQUINE AND CHLOROQUINE IN PLASMODIUM VIVAX MALARIA INFECTION, MAUMERE, EAST NUSA TENGGARA Armedy Ronny Hasugian - National Institute Health and Research Development Ministry of Health Indonesia</p> <p>3. BIOECOLOGY STUDY ON ABOUT MALARIA VECTOR Anopheles spp IN ROWOKELE SUBDISTRICT, KEBUMEN REGENCY, JAWA TENGAH PROVINCE Dhian Prastowo - B2P2VRP Salatiga</p> <p>4. ETHNOSAINS COMMUNITY OF MALARIA IN OUTBREAK AREA: ROWOKELE SUBDISTRICT, KEBUMEN REGENCY, JAWA TENGAH PROVINCE Anggi Septia Irawan Balai Besar Litbang Vektor dan Reservoir Penyakit</p>	<p>Moderator :</p> <p>1. Prof. Agus Suwandono</p> <p>2. DR. dr. Harimat H.</p> <p>3. dr. Karyana, M.Kes</p> <p>Notulis :</p> <p>4. dr. Nurbaiti, M.kes</p> <p>5. Mitri Rahmawati, SKM, M.Kes</p>	Mendut
	2. Determinant of Health	<p>1. POLA DIARE DAN TERAPINYA PADA BALITA DI RUMAH SAKIT Armaji Kamaludi Syarif - Balitbangkes Kemenkes RI, Pusat Teknologi Terapan Kesehatan dan Epidemiologi Klinik</p> <p>2. KARAKTERISTIK PENDERITA DEMAM BERDARAH DENGUE KLINIS DAN DBD KONFIRMASI SEROLOGI DI LIMA RSUD JAKARTA Rossa Avrina - Badan Litbang Kementrian Kesehatan</p> <p>3. TYPE OF TREATMENT OBSERVERS AND THEIR INFLUENCE IN TUBERCULOSIS TREATMENT IN MAJALENGKA DISTRICT, WEST JAVA PROVINCE Noor Edi W Sukoco - The National Institute of Health Research and Development</p> <p>4. CURE RATE OF TB TREATMENT USING DOTS STRATEGY IN HOSPITAL Meryani Girsang - NIHRD</p>	<p>Moderator :</p> <p>1. drg. Agus Suprpto, M.Kes</p> <p>2. Prof. Supratman</p> <p>3. Nagiot C., SKM, ME</p> <p>Notulis :</p> <p>4. Uly Adhie M., S.Si, Apt</p> <p>5. Heny Lestari, SKM</p>	Prambanan
	3. Determinant of Health	<p>1. FAKTOR-FAKTOR YANG BERTHUBUNGAN DENGAN KEJADIAN CACAT PADA ANAK USIA 24 - 59 BULAN DR. Ir. Heryudarini Harahap, M.Kes - NIHRD</p> <p>2. PEMETAAN DAN PEMODELAN BALITA GIZI BURUK DI JAWA TIMUR DENGAN PENDEKATAN REGRESI SPASIAL Mochamad Setyo, S.Si, M.Si</p> <p>3. ANALISIS POLA MAKAN (TERKAIT DENGAN HOMOSISTEIN) PADA REMAJA OBESITAS DI INDONESIA Dr.dr. Citrakesumasari, M.Kes</p> <p>4. THE CORRELATION OF MOTHER NUTRITIONAL STATUS AND OTHER FACTORS TO INFANT'S BIRTH WEIGHT IN BUDI KEMULIAAN HOSPITAL JAKARTA IN JANUARY 2012 Khaula Karima - Universitas Indonesia</p>	<p>Moderator :</p> <p>1. DR. Abas Basuni</p> <p>2. DR. Anies Irawati</p> <p>3. R. Bimo Satrio R., SH, MH, M.Kes</p> <p>Notulis :</p> <p>4. dr. Telly P., M.Epid</p> <p>5. Indri Rooslamati, S.Si, Apt</p>	Indonesia-Malaysia
12.00-14.00	Poster Session			
	LUNCH			

14.00-16.00	Plenary Session 2			Borobudur
	Health System Strengthening			
	1. Health System Strengthening	dr. Soewarta Kosen, MPH, DrPH - MOH	Moderator : Prof. dr. Agus Suwandono, MPH, Dr.PH Notulen : dr. Nurbaity, M.Kes Asrot : Linda Nilawati, SKM Pembawa Acara : dr. Telly P., M.Epid	
	2. Equity in Universal Health Coverage Movement	Professor Laksono Trisnantoro - Faculty of Medicine University of Gadjah Mada		
	Determinant of Health			
3. Reducing Regional Health Disparities: Challenges and Opportunities	Dr.Triono Soendoro, Ph.D – MOH	Moderator : Prof. dr. Agus Suwandono, MPH, Dr.PH Notulen : dr. Nurbaity, M.Kes Asrot : Linda Nilawati, SKM Pembawa Acara : dr. Telly P., M.Epid		
4. Social Determinants of Health and Universal Health Coverage	Professor Charles Surjadi - Faculty of Medicine Atmajaya University			
5. Spatial and Environmental Determinant of Health (EH)	Professor Umar Fahmi Ahmadi - APKESI			
16.00-17.00	Conclusion	Dr. Trihono, M.Sc	Organizing Committee	
	Closing Ceremony	Professor Ali Ghufon Mukti		



E.1. COMMERCIALIZATION IPR PRODUCT PROGRAMME SCHEDULE

October 9 th 2012			
Day-1 : IPR socialization			
11.00-13.00	Registration & lunch		
13.00-13.30	Keynote speech & Opening	Head Of NIH & RD	
13.30-14.30	Membangun Budaya R&D yang Inventif dan Inovatif	Ir. Arif Syamsudin, SH, MSi, Directorate Patent, Directorate Intellectual Property Rights, Ministry of Law and Human Rights, R.I.	Prof. Komari MSc, PhD
14.30-15.30	Pemanfaatan Hasil Riset dan Manajemen Inkubasi Produk HKI	Prof. Dr. Ir. Bambang Subiyanto, M.Agr Center for Innovation, Indonesian Institute Of Sciences	
15.30-16.30	Inovasi Bidang Kesehatan Menuju Komersialisasi	Kristanto Santosa, Business Innovation Center	
16.30-19.00	BREAK		
19.00-21.00	Pembekalan peneliti (Peneliti pengusul HKI)	Drh. Basundari, M.Kes	
October 10 th 2012			
Day-2 : Commercial exhibition			
08.00-09.00	Registration		
09.00-09.30	Keynote speech & Opening	Head Of NIH & RD	
09.30-11.00	Expose of IPR NIHRD Products		
	PANEL I:		Drh. Basundari, M.Kes
	1. Galaktomanan Bahan Pangan Fungsional	Suryana MSc.	
	2. Krangean sebagai Afrodisiaka alami	Dra. Yun Astuti	
	3. Suplemen berbahan dasar buah sirih untuk meningkatkan daya tahan tubuh terhadap malaria	Dra. Yun Astuti	
	4. Biscuit PAD Plus yang mengandung micronutrient yodium untuk balita Kurang Energi Protein	Sri Supadmi Mkes	
11.00-12.00	Discussion		
12.00-13.00	BREAK		
13.00-15.00	PANEL II:		Dra. Lucie Widowati MSi. Apt.
	1. Garam fortifikasi Iodium	Prof. Komari	
	2 Test Kit Iodium Semi Kuantitatif	Suryana MSc.	
	3. Larvasida Berbahan Dasar Lokal Salatiga	Dra. Blondine Ch.P	
	4. Makanan siap saji untuk balita Kurang Energi Protein	Astuti Lamid MCN	
15.00-16.00	Discussion		
16.00-19.00	BREAK		
19.00-21.00	Evaluation	Drh. Basundari, M.Kes	

E.2. APKESI CONGRESS & SCIENTIFIC MEETING PROGRAMME SCHEDULE

Waktu	Kegiatan	Pembicara	Pimpinan Sidang/ Koordinator
Selasa, 9 Oktober 2012			
16.00-18.30	Registrasi peserta Kongres		
18.30-20.00	Makan malam bersama		
20.00-20.30	PEMBUKAAN		
	Pengantar MC		
	Sambutan ketua Panitia		
	Sambutan Ketua Umum APKESI	Prof. Umar Fahmi	
	Sambutan Pengarahan Wamenkes	Prof. Ali Gufron Mukti	
20.30-22.00	PLENO I		Prof. Herman Sudiman
	Pemilihan Ketua Sidang dan sekretaris		
	Penetapan pimpinan sidang Kongres		Pimpinan sidang terpilih
	Pengesahan jadwal acara dan tata tertib		
	Laporan pertanggungjawaban DPP APKESI		
	Tanggapan dan penerimaan thd laporan pertanggungjawaban DPP APKESI		
	Penetapan demisioner		
Rabu, 10 Oktober 2012			
08.30-12.00	Sidang Komisi		Pimpinan sidang terpilih
	<ul style="list-style-type: none"> Komisi AD/ART Komisi Garis Besar Program APKESI 2012-2015 		Ketua Komisi Terpilih
12.00-13.00	ISHOMA		
13.00-15.00	PLENO II		Pimpinan sidang terpilih
	<ul style="list-style-type: none"> Komisi AD/ART Komisi Garis besar program APKESI 2012-2015 		
15.00-15.15	Istirahat (<i>coffee break</i>)		
15.15-17.00	<ul style="list-style-type: none"> Pemilihan Ketua APKESI 2012-2015 Penetapan Ketua APKESI 2012-2015 Serah terima jabatan dari Ketua periode 2009-2012 kepada Ketua terpilih 2012-2015 		Pimpinan sidang terpilih
17.00-19.00	ISHOMA		
19.00-19.30	Pengantar MC		
	Sambutan dan pengantar simposium	Prof. Umar Fahmi	Prof. Hardinsyah, MS
19.30-22.00	Pleno III		
	<ul style="list-style-type: none"> Regulasi fasilitas pelayanan kesehatan Sarana, prasarana dan SDM pelayanan kesehatan Pembiayaan dan penganggaran kesehatan Pengarusutamaan pembangunan kesehatan Pemberdayaan masyarakat bidang kesehatan 	<ul style="list-style-type: none"> Prof. Agus Purwadianto Prof. Agus Suwandono Prof. Wasis Budiarto, MS Dr. Sandi Ilyanto, MPH Prof. Jajok Mukono 	Prof. Hardinsyah, MS
22.00-selesai	Penutupan	Prof. Umar Fahmi	

F. SYMPOSIUM INFORMATION

F.1. SECRETARIAT

National Institute of Health Research and Development (NIHRD)

Jl. Percetakan Negara 29, Jakarta 10560 Indonesia.

Phone: +62 21 4244228, +62 213145583

Email : symposium@nihrd.or.id, secretariat@nihrd.or.id

F.2. REGISTRATION

On-site registration will begin at the venue, which will be located at Inna Garuda Hotel. It is hoped, however, that most registrations will be done beforehand using the Symposium website at <http://www.nihrd.or.id> or <http://simreg.litbang.depkes.go.id> to guarantee your seat.

• Pre Symposium

Re-registration and on-site registration opening hours: October 9, 2012; time: 08.00-09.00; venue: registration area, Inna Garuda Hotel Lobby (1st floor)

Pre-symposium Topics:

1. Good Clinical Practice
2. Public Health Law
3. Equity Analysis

Pre-symposium Terms and conditions:

1. Number of participants will be limited maximum to 40 persons per class
2. Online registration is highly recommended (on-site registration cannot guarantee of available seat in the class)
3. Pre-symposium registration fee:

Category	Good Clinical Practice / Public Health Law / Equity Analysis for 2 days
1. Local Participant	Rp. 800.000
2. NIHRD/APKESI	Rp. 700.000
3. Local Student	Rp. 600.000

4. Pre-symposium registration fee includes pre-symposium kit, certificate, lunch and coffee break
5. Participants need to arrange their accommodation by themselves. The pre-symposium committee will not arrange the accommodation. Information about accommodation can be downloaded from the website (link)

- **Symposium**

Re-registration and on-site registration opening hours: October 11, 2012; time: 08.00-09.00; venue: registration area, Inna Garuda Hotel Lobby (1st floor)

Registered Symposium presenters and participants are entitled to symposium kit, symposium name tag, admission to all symposium sessions, symposium lunch and certificate

Symposium Registration Fee

Category	Registration Fee
Local Participant	Rp. 800.000
NIHRD/APKESI	Rp. 700.000
Local Student	Rp. 600.000
International Student	US \$ 200
International Participant	US \$ 350

F.3. SYMPOSIUM NAME TAG

All participants are requested to wear their name tag at all times during the Symposium. Symposium name tag will be given to all participants at the time of registration. Participants who lose their name tag must re-register using the confirmation letter at the registration desk. A service fee of Rp. 50.000 will be charged to reissue the name tag.

F.4. VENUE

The symposium will be held in Inna Garuda Hotel. Jl. Malioboro, No. 60 Yogyakarta, 55213, Indonesia. <http://www.innagaruda.com>.

Hotel around Inna Garuda Hotel:

No	Hotel	Address	Phone	Price (Standart Room)
1.	Ibis Yogyakarta Malioboro	Jl. Malioboro no. 52-58, 55001, Yogyakarta, Indonesia	(+62)274-516974	
2.	Mutiara Malioboro Yogyakarta	Jl. Malioboro no. 18, 55213, Yogyakarta, Indonesia	(+62)274-563814	Rp. 750.000,-
3.	Santika Premiere Yogya	Jl. Jend. Sudirman No. 19, 55233, Yogyakarta, Indonesia	(+62)274-563036, 562743	
4.	Amaris Hotel Diponegoro	Jl. Diponegoro No. 87, 55231, Yogyakarta, Indonesia	(+62)274-545999	
5.	Abadi Hotel Jogja	Jl. Pasar Kembang No. 49, Yogyakarta, Indonesia	(+62)274-563435	Rp. 500.000,-



F.5. WORKING AREA

Secretariat and File Submission / Computer Room

Thailand and Brunei Room. The Room is used for submitting presentation material (on CD or flash disk) to the Symposium committee and facilitating the speakers to test and install material.

Press Conference Room

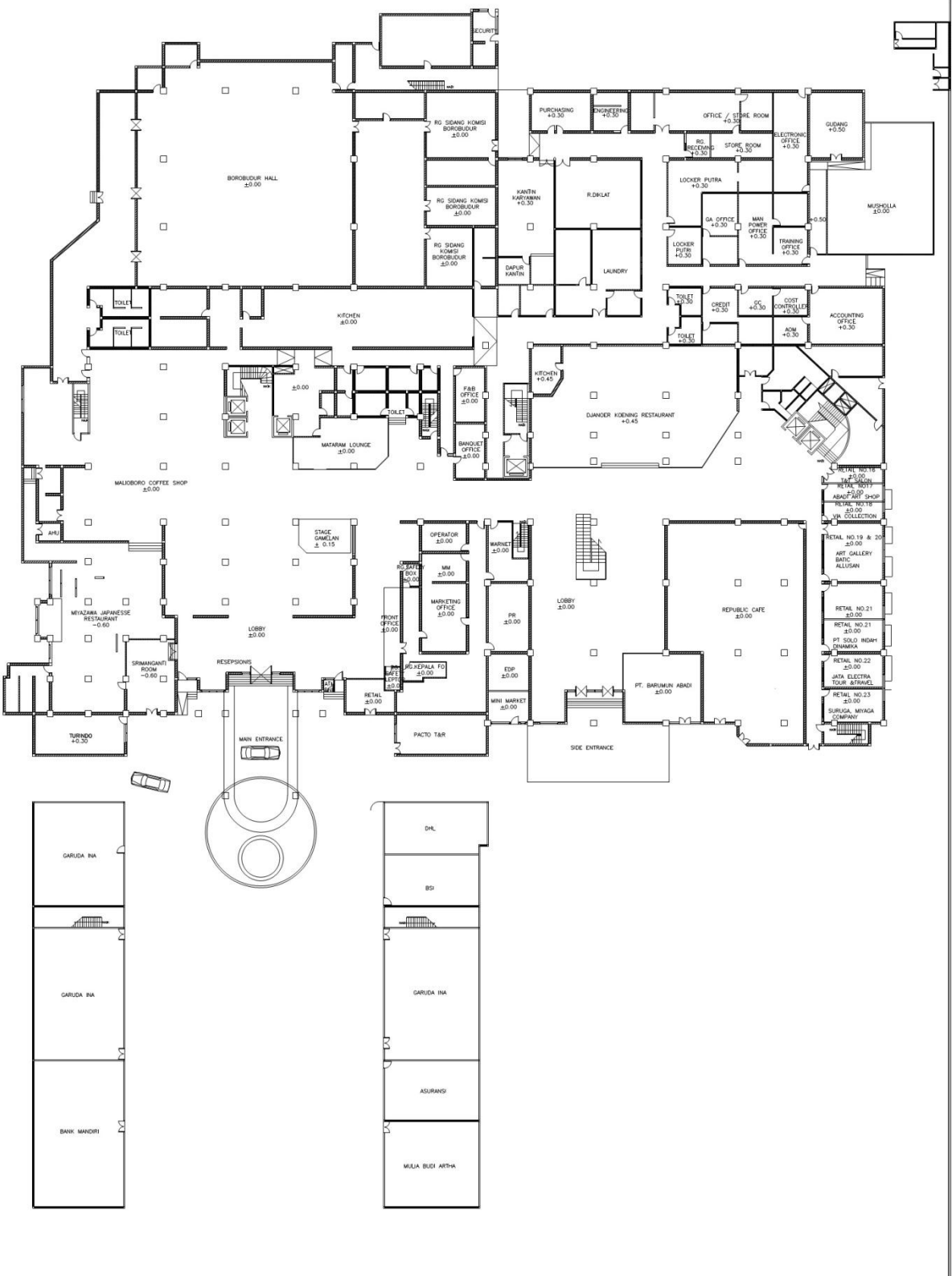
Arjuna Room. The room is used for the Press Conference from the Minister of Health Republic of Indonesia.

First Aid and Medical Centre

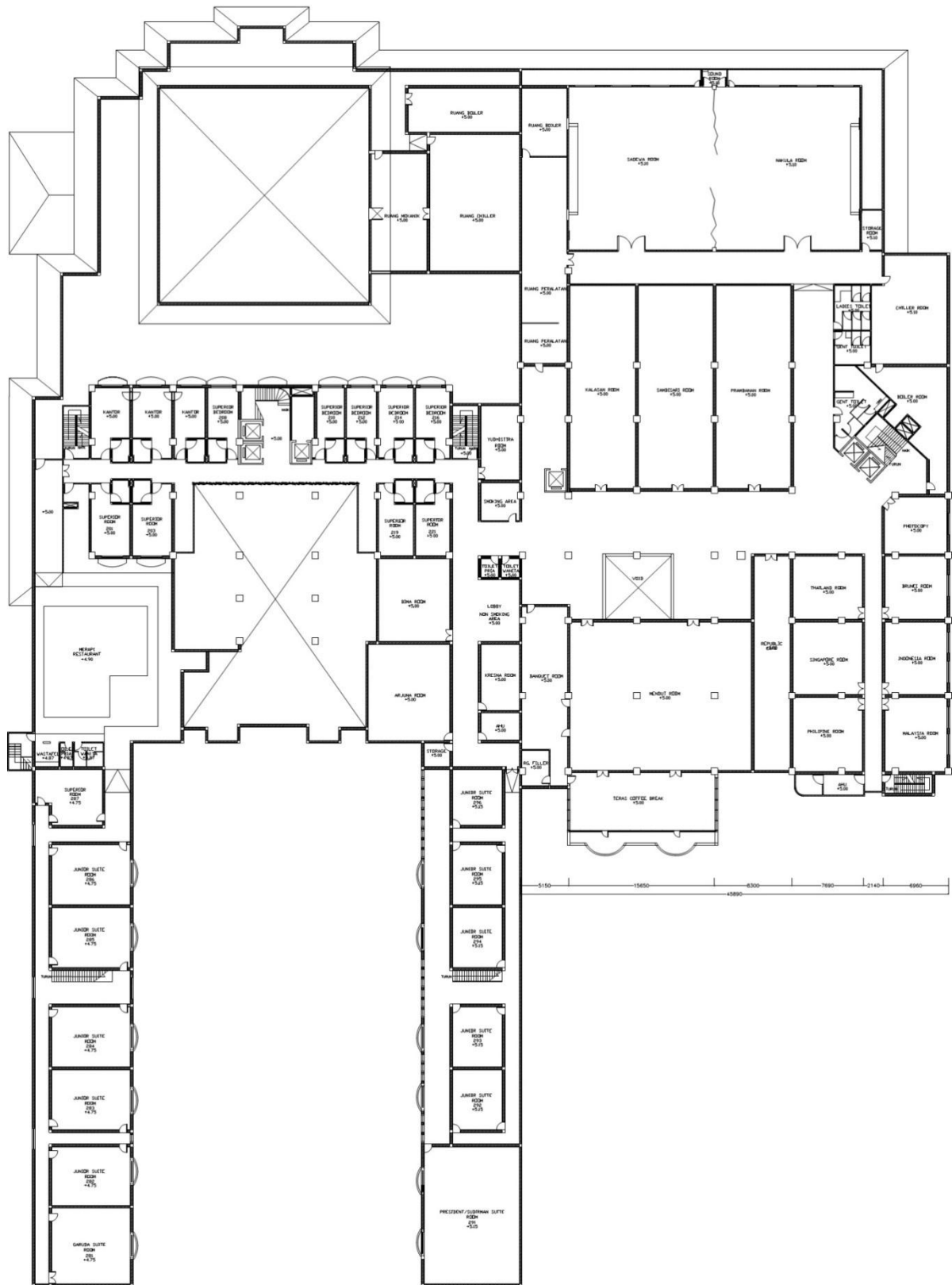
First aid office will be located at Yudistira room. The room is used to facilitate the first aid for medical issues occur during the event.

F.6. LAYOUT OF INNA GARUDA HOTEL

Inna Garuda 1st Floor



Inna Garuda 2nd Floor



F.7. OPENING AND CLOSING CEREMONY

Opening Ceremony

The opening ceremony will take place on the morning of 11 October, 2012 at Borobudur Room, Inna Garuda Hotel Yogyakarta. Minister of Health, RI (Mrs. dr. Nafsiah Mboi, Sp.A, MPH) is expected to officially open the Symposium.

Closing Ceremony

The Closing Ceremony will take place on 12 October, 2012 at borobudur Room, Inna Garuda Hotel Yogyakarta. The ceremony will close the Symposium and will be held after the last plenary sessions. Vice Minister of Health (Mr. Professor Ali Ghufron Mukti) is expected to officially close the symposium.

F.8. SYMPOSIUM LUNCH

Lunch is located at Djanoer Koenig restaurant. In addition, participants could purchase light meals, snacks and beverages at catering areas at Inna Garuda Hotel.

F.9. TRANSPORTATION

By Plane

Yogyakarta's Adisucipto International Airport (IATA: JOG), 8 km east of town, is a small but busy mostly-domestic hub. There are near-hourly connections on Garuda to Jakarta (50 minutes) and Denpasar, while other domestic airlines service major cities in Java, Sumatra, Kalimantan and Sulawesi. For international services, AirAsia connects Yogyakarta to both Kuala Lumpur and Singapore while Malaysia Airlines flies between Yogyakarta and Kuala Lumpur.


There is a tourist information desk, ATM and taxi stand in the arrival hall. Official airport taxis are available for around Rp 50,000, pay at the taxi desk in arrival terminal and then head for the official taxi rank. Give the receipt to your driver, there is no need for any additional payment. A departure tax of Rp 35,000 is charged for domestic flights and Rp 100,000 for international flights.

Yogyakarta airport is the sole rail-connected airport in Indonesia. Those arriving from (and departing into) the airport can take a Prambanan Ekspres regional train to/from Kutoarjo (west of Yogyakarta), Palur (just east of Surakarta) and several stations in between, including Tugu (just off Malioboro Street in Yogyakarta) and Solobalapan station at Solo. The station at the airport is just a few minutes walk from the terminal, with an air-conditioned underpass leading all the way to the platform for trains into Yogyakarta. Bandar Udara Internasional Adisucipto (Adisucipto International Airport), Jl. Solo km9, Phone: +62 274 484261 (fax: +62 274 488155).

By Bus

The main bus station is Giwangan, 4 km to the southeast of the centre. There are regular services throughout the island, including Jakarta (9 hours), Bandung (6 hours), and Surabaya (8 hours).

Terminal Penumpang Giwangan (Giwangan Bus Terminal). Jl. Imogiri, Giwangan. +62 274 378288, +62 274 7482222 (fax: +62 274 7483333)



There is also a bus station inside the airport which is part of the Trans Jogja Busway System. From there you can get to any one of the many bus stations in their system. It costs Rp 3,000 for a ticket.

If you are going north, to Borobudur temple or Semarang for example, head to Jombor terminal located just above the northern Ringroad. Expect to be ripped off on any bus to Borobudur, the going rate for westerners at the moment is Rp 15,000-25,000 (local Rp 7,000).

If you are planning to come to Yogyakarta from Bandung then you need to go to Cicaheum Terminal in Bandung to get bus. If direct bus is not available then take bus to Purwokerto (6-7 hr, Rp 45,000). From Purwokerto there are regular buses available for Yogyakarta (4-5 hr, Rp 30,000).

Since Yogyakarta is in close proximity with Semarang and Solo, there's also a shuttle bus that operates between these cities, called Joglosemar (Jogja-Solo-Semarang), Rp 45,000 to Semarang, and Rp 25.000 to Solo

- Joglosemar (Joglosemar), Jl. Magelang Km 5,5, Phone: +62 274 623 700
- Day Trans, Purawisata, Jl. Brigjen Katamso, Phone: +62 274 385 990
- Cipaganti, Jl. Magelang Km 5,6, Phone: +62 274 919 4777 / 9124 888

By Train

Trains from Jakarta take between 7-12 hr to the main Yogyakarta station, commonly called Tugu Station. The Argo-class trains (Argo Lawu and Argo Dwipangga) are the best of the lot being the most comfortable and fastest (8 hours, Rp 255,000-315,000). Taksaka is almost as good at Rp 235,000-265,000. These express services connect Jakarta and Yogyakarta in 7-8 hours, either at daytime or overnight. Price and schedules are available online.

Passengers from Bandung should take the Argo Wilis or Lodaya expresses which traverse a scenic part of Java during daylight hours, with rice fields and mountains (although there is an overnight Lodaya and the Turangga from Surabaya also travels overnight. The fare is Rp 155,000.

Passengers from Surabaya are served by the twice-daily Sancaka service departing in the morning and afternoon.

Solo and Yogyakarta are connected by several Prambanan Ekspres trains. Despite the name, the train does not stop at Prambanan station, and even if it does make an unscheduled stop, the station is rather far from the temple complex of Prambanan. The Prambanan Ekspres does stop at Maguwo station (for the airport) making it easy for travelers to change modes.

Stasiun Tugu (Tugu Central Railway Station), Jl. Mangkubumi 1. Phone: +62 274 589685. The main central station, serves big city destinations such as Jakarta, Bandung, Surabaya, and Solo. To buy tickets, enter on Jl. Pasar Kembang and get a queue number from the stand facing the ticket windows. Then go to the opposite side of the room and fill out a ticket request slip, consulting the timetables on the wall to your left. You will be called to the appropriate ticket window, the announcement will be called (in Indonesian only) and displayed on the electronic sign on the wall.

F.10. VISA

For international participant visa on arrival can be arranged in the Soekarno - Hatta (Soeta) International Air Port. More information of visa for entering Indonesia is available on <http://www.kemlu.go.id> or <http://www.embassyofindonesia.org>. ASEAN passport holders don't have to apply visa (ASEAN Visa Free).

G. GUIDELINES FOR RESOURCE PERSONS

G.1. ABSTRACT

Guidelines for Abstract Submission:

1. Abstracts must be submitted in English or Bahasa Indonesia.
2. Abstract should contain no more than 400 words (excluding author information).
3. The identifying information includes:
 - a. Titles in BOLD and UPPER CASE
 - b. Author and Co-author(s)' details, including affiliation details (e.g., department, institution / hospital, city, country)
4. The abstracts text is limited to 400 words and is to be structured to the following headings: Background, Objectives, Methods, Results, and Conclusions. The section headings should be bold.
5. Please do not include reference, tables, graphs, and images in the abstract.
6. Accepted abstract can be orally presented in Bahasa Indonesia or English. Power point slide should be in English only.
7. Abstract Submission Deadline: September 15, 2012
8. Accepted Abstract Announcement: September 18, 2012

G.2. POSTER

Poster session will be held at the Inna Garuda Hotel Yogyakarta on 11 to 12 October 2012 or during the implementation of Symposium took place

Poster Dimensions

Poster board will be provided to display your materials. The poster size is 120 cm high and 90 wide (could be divided into 2 posters). Materials, including title, may not extend beyond the poster size.

Poster Design

Make your own poster presentation easy to read with some visual display. Produce material that is legible from a distance of at least 3 meters. Remember the audience may have a short time frame to pay attention to your presentation. Use color for highlighting and to make your poster more attractive.

Use pictures, diagrams, cartoons, figures, etc, rather than only text wherever possible. It does not generally refer to receiving support from a grant funder, unless the funder is actively engaged in the design or implementation of the project as well. Don't forget to put your official card in you poster.

Language

All poster presentation should be delivered in English or Bahasa Indonesia.

Attendance

We highly recommend that you stand near your poster so that viewers may ask you questions at break or lunch time. We also recommend that you do so to maximize your opportunities to present your project or activity and to be available to meeting participants to discuss your poster. You may put your contact detail or bussiness card and abstract printout near your poster.



Poster Scheduling and Display

1. All posters should be based on the submitted abstract as accepted by the Scientific Committee.
2. Posters will be displayed in poster area in the 2nd floor (please check the site map).
3. Posters should be displayed as per the date and number in the program and be set up by 08:00 am.
4. The Poster Board Number will be posted by the Organizing Committee. It is the presenter's responsibility to put up their poster.
5. All posters should be displayed on the panel between 09:00 and 18:00. We also recommend that you leave your poster up throughout the day, for those who wish to visit the poster area during other session an break times.
6. Posters will be taken down by the committee by 20:00 pm at the end of poster session on October 12, 2012.

H. POSTER PRESENTATION

1	ID	Author	Title
2	42	Tri Nury Kridaningsih, S.Si Kridaningsih, Hana Krismawati, Mardi Rahardjo, Evi Iriani Natalia	FIRST DENGUE HEMORRHAGIC FEVER OUTBREAK IN KAIMANA DISTRICT, WEST PAPUA PROVINCE, EPIDEMIOLOGY AND ENTOMOLOGY INVESTIGATION
3	45	Novi Sulistyaningrum, Lina Rustanti, Sukmayati Alegantina	UJI MUTAGENIK EKSTRAK GAMBIR (<i>Uncaria gambir</i> Roxb.) SEBAGAI KANDIDAT ANTIRETROVIRAL UNTUK HIV
4	50	Ramadhan Tosepu	THE RELATIONSHIP WITH ENVIRONMENTAL SANITATION ON DIARRHEA INCIDENCE OF DISEASE SOCIETY COASTALAREAS VILLAGE NAMBO ABELI DISTRICTS KENDARI CITY
5	51	Ratih Oemiati, Lisa Andriyani	BASELINE DATA OF STUDY COHORT OF RISK FACTORS NCD OF CHRONIC OBSTRUCTIVE PULMONARY DISEASE (COPD) IN CENTRAL BOGOR CITY, WEST JAVA, INDONESIA
6	55	Budi Setyawati, Noviati Fuada, Shalimar	PROFIL STATUS GIZI, KEADAAN SOSIAL EKONOMI, PARITAS, PENGETAHUAN DAN PERILAKU SERTA KESEHATAN REPRODUKSI PADA WANITA YANG MENIKAH DINI DI INDONESIA
7	56	Lusiana Darsono	THE EFFECT OF STEAMED BROCCOLI (<i>BRASSICA OLERASEA L VAR. ITALICA</i>) COMPARED WITH CAULIFLOWER (<i>BRASSICA OLERASEA L VAR. BOTRYTIS</i>) TO CLINICAL SIGN AND HISTOPATHOLOGY OF COLON IN MICE INDUCED BY DSS
8	60	Demsa Simbolon	BERAT LAHIR DAN KELANGSUNGAN HIDUP NEONATAL DI INDONESIA ANALISIS DATA SDKI 2007)
9	71	Muhammad Hasyimi, Supratman Sukowati	BIO-ECOLOGY MALARIA VECTOR IN GALANG BATAM CITY, KEPULAUAN RIAU PROVINCE
10	75	Mery Ramadani, Suryati, Bertha Helena	ASSOCIATION BETWEEN IRON INTAKE AND ANEMIA IN THIRD TRIMESTERS PREGNANCY AT BUNGUS HEALTH CENTER, PADANG IN 2012.
11	76	Raharni, Rini Sasanti H	PENGEMBANGAN JARINGAN PUSKESMAS DAN GAMBARAN KETENAGAAN PUSKESMAS KOTA BEKASI
12	82	Fauziah Elytha, Azrimaidaliza, Vivi Triana	ASSOCIATED NUTRITION CONSUMPTION, LEVEL OF KNOWLEDGE, ATTITUDE WITH PEPTIC ULCER DISEASE EVENT ON TENAGERS IN SMAN 2 PADANG CITY 2011
13	92	Indirawati Tjahja, Magdarina D.A., Sintawati, Made Ayu Lely S, Lely Andayasari	VALUE DENTAL CARIES (DMF-T) TO THE WEST IN THE DISTRICT IN 2010 KETAPANG KALIMANTAN
14	101	Ninie Lely Pratiwi, Hari Basuki	HUBUNGAN KARAKTERISTIK REMAJA TERKAIT RISIKO PENULARAN HIV-AIDS DAN PERILAKU SEKS TIDAK AMAN DI INDONESIA
15	114	Kadek Tresna Adhi	OBESITY STATUS AND NUTRIENT INTAKE BALINESE WOMEN AGED ABOVE 40 YEARS OLD IN DISTRICT OF SOUTH DENPASAR BALI PROVINCE
16	127	Nike Susanti, Krisna N.A Pangesti, Yeremiah RC	GEOGRAPHIC DISTRIBUTION OF NON POLIO ENTEROVIRUSES (NPEV) FROM ACUTE FLACCID PARALYSIS CASES IN WESTERN PART OF INDONESIA 2007-2010
17	128	Charles Surjadi, Yunisa Astiarani; Anisa Riza Chaerunnisa; Siti Isfandari	CITY AND MUNICIPALITY AS DETERMINANT FACTORS OF AGING DISABILITY IN WEST JAVA AND BANTEN INDONESIA
18	129	Weny Lestari	TRADISIONAL HERBAL MEDICINE IN KARET BIVAK CEMETERY FOR HEALING THE DISEASES AFTERMATH THE FLOOD DISASTER IN URBAN COMMUNITY
19	135	Annida Hasan, Lukman Waris	THE POTENTIAL HOST OF FASCIOLOPSIS BUSKI IN KALUMPANG DALAM VILLAGE, BABIRIK SUBDISTRICT, HULU SUNGAI UTARA REGENCY, PROVINCE OF SOUTH KALIMANTAN
20	136	Lukman Waris, Liestiana Indriyati	THE EPIDEMIOLOGY OF MALARIA IN AN INLAND AREA OF KALIMANTAN (KEKAYAP VILLAGE, SEBUKU DISTRICT, NUNUKAN REGENCY, PROVINCE OF EAST KALIMANTAN
21	137	Nita Rahayu	FAKTOR RISIKO KEJADIAN MALARIA DI KABUPATEN TANAH BUMBU PROPINSI KALIMANTAN SELATAN

22	142	Tri Astuti Sugiyatmi	UTILIZATION OF HEALTH FACILITIES IN THE IMPLEMENTATION OF LOCAL HEALTH INSURANCE IN TARAKAN CITY, EAST KALIMANTAN, INDONESIA
23	145	Luxi Pasaribu, Rachmalina S. Prasodjo, Siti Isfandari, Lutfah Rifâati, Roselinda	BASIC STUDY ON PATIENTS' PROFILE AND NEEDS ACCORDING TO HIV AIDS PROGRAM AND VCT CLINIC IN ENDE DISTRICT, EAST NUSA TENGGARA
24	146	Zahrina Laborahima	STRATEGY OF SISTEM INFORMASI DAN KOMUNIKASI (SISFOKOM) UNIVERSAL COVERAGE OF HEALTH SERVICES TO SUPPORT THE HEALTH SYSTEM REFORM AND IMPLEMENTATION OF UNIVERSAL HEALTH COVERAGE CONCERNING EQUITY AND QUALITY
25	148	Tin Afifah, Teti Tejayanti, Yuslely Usman, Felly Senewe, Putisari, Oster Suriani, Lamria Pangaribuan, Thoman Pardosi, Poetrijanti	MATERNAL MORTALITY IN INDONESIA: FOLLOW UP STUDY OF PREGNANCY RELATED DEATH OF THE INDONESIA 2010 CENSUS POPULATION
26	150	Tutik Wahyuni, Sri Krisnamurni	COMPILATION OF STUDIES FOOD CONSUMPTION, PHYSICAL EXERCISE, HEALTHY LIFESTYLE AND NUTRITIONAL STATUS IN INDONESIA ADOLESCENCE
27	160	Sri Irianti, Puguh Prasetyoputra, D. Anwar Musadad	WHAT ARE THE RELATIONSHIPS BETWEEN DRINKING-WATER SUPPLY, SANITATION AND UNIVERSAL HEALTH CARE COVERAGE? RESULTS FROM THE INDONESIA BASIC HEALTH RESEARCH 2010
28	162	Dewa Ayu Putu Rasmika Dewi, Desak Gede Diah Dharma Santhi, Ni Putu. E. Leliqia	SKRINING FITOKIMIA DAN UJI POTENSI ANTIDIABETES EKSTRAK ETANOL AKAR GATEP (INOCARPUS FAGIFERUS (PARKINSON) FOSB.) PADA TIKUS PUTIH JANTAN GALUR SPRAGUE DAWLEY
29	163	Delta Fermikuri Akbar, Lyana Setiawan, Meilani Syampurnawati	DETECTION OF NUCLEOPHOSMIN (NPM1) GENE MUTATIONS AND ITS ASSOCIATION WITH IMMUNOPHENOTYPING AND CYTOGENETICS IN ACUTE MYELOID LEUKEMIA (AML)
30	168	Putu Suariyani, Estuning Hanindyta Mediasta, Pasek Kardiwinata, Made Sutarga	CHARACTERISTICS OF BREAST CANCER PATIENTS IN SANGLAH HOSPITAL, DENPASAR, BALI
31	172	Ni Ketut Susilarini, Vivi Setiawaty, Mursinah, Herna Hariandja, Nur Ika Hariastuti, Krisna Nur A.P	ANTIGENIC CHARACTERIZATION OF THE PANDEMIC H1N1PDM09 PATIENTS IN INDONESIA IN 2009
32	174	Richard Nahumury, Chatarina U.Wahyuni, Lucia Y. Hendrati	PREVENTION MODEL OF MALARIA INCIDENCE IN AMBON
33	177	Ni Putu Widarini, I Ketut Tangking Widarsa, Luh Putu Suariyani, Sutiari Ketut Rina Listyowati	GEOGRAPHICAL CONDITIONS AND CULTURAL DETERMINANTS AND IMPLICATIONS OF INFANT MORTALITY IN MUNTIGUNUNG VILLAGE, KARANGASEM REGENCY ,BALI PROVINCE
34	182	Anissa Rizkianti, Tin Afifah, Rika Rachmalina, Prisca P. Arfines	SOCIAL HEALTH FINANCING AND COMMUNITY EMPOWERMENT ON MATERNAL DEATHS IN INDONESIA: USING THE FOLLOW UP STUDY OF INDONESIA 2010 POPULATION CENSUS DATA
35	183	Ika Saptarini, Tin Afifah, Novianti, Anissa Rizkianti	CARE SEEKING BEHAVIOR AMONG MATERNAL DEATH CASES IN INDONESIA: FOLLOW UP STUDY OF PREGNANCY RELATED DEATH OF THE INDONESIA 2010 POPULATION CENSUS
36	185	Yenni Risniati, Emiliana Tjitra	ANALISIS LANJUT RISET KESEHATAN DASAR 2010: PENGGUNAAN ARTEMISININ-BASED COMBINATION THERAPY DI INDONESIA
37	187	Eni yuwarni, Yenni Risniati, Dwi Hapsari, Emiliana Tjitra	ANALISIS LANJUT RISET KESEHATAN DASAR 2010:FAKTOR YANG BERPERAN TERHADAP KEJADIAN MALARIA DI WILAYAH INDONESIA BAGIAN TIMUR
38	192	Hadjar Siswantoro, Armedy Ronny Hasugian, Telly Purnamasari, Sri Laning, Lidwina Yanuar, Tersila Dedang, Emiliana Tjitra	DOSIS TUNGGAL ARTEMISININ-NAFTOKUIN DIBANDINGKAN DENGAN DIHIDROARTEMISININ-PIPERAKUIN PADA SUBYEK DEWASA TERINFEKSI PLASMODIUM FALCIPARUM TANPA KOMPLIKASI DI INDONESIA
39	195	Sarimawar Djaja	EPIDEMIOLOGIC TRANSITION IN INDONESIA FOR 21 YEARS AND HEALTH CARE IMPLICATION ACCORDING TO HOUSEHOLD HEALTH SURVEY, NATIONAL HEALTH SURVEY, BASELINE HEALTH RESEARCH (1986-2007)
40	197	Retna Mustika Indah, Armaji Kamaludi Syarif	PROFILAKSIS PRIMER TUBERKULOSIS PADA ANAK DI PUSKESMAS KOTA BEKASI

41	202	Rita Marleta Dewi, Rita Kusriastuti, Retno Triastuti, Sarwo Handayani, Endah Aryani, Ryanti Ekowatiningsih, Budi Prasetyrini, Basundari Sri Utami, Sahat Ompusunggu, Sekar Tuti, Balbir Singh.	MOLECULAR IDENTIFICATION OF PLASMODIUM KNOWLESI FROM SOUTH KALIMANTAN
42	203	Ervi Salwati Salwati, Emiliana Tjitra	CONFIRMATION OF PLASMODIUM FALCIPARUM TREATMENT FAILURE CASES BY PCR GENOTYPING
43	204	Nadia Tahsinia, Badra Al- Aufa	THE EFFECTIVENESS OF HYPERTENSION QUARTET [®] FOR PRIMARY AND SECONDARY STUDENT TO PREVENT HYPERTENSION CASES IN DISTRICT REMPOA, 2012
44	206	Mariana Raini, Ani Isnawati, Nelly Puspendari, Ondri Dwi Sampurno	PROFIL OF STAPHYLOCOCCUS AUREUS'S CONTAMINANT IN INFANT FORMULAS IN INDONESIA IN 2011
45	216	Meitria Syahadatina Noor, Adi Noegroho, Siti Nur Fitriyana	REVIEW OF CULTURE FOOD EVENTS TABOO ANEMIA IN PREGNANT WOMEN IN THE VILLAGE OF SUNGAI ALAT SUB DISTRICT ASTAMBUL BANJAR 2011
46	219	Endah Ariyanti, Riyanti Ekowatiningsih	NILAI KESEPAKATAN MIKROSKOPIS MALARIA DI BEBERAPA RUMAH SAKIT DI JAYAPURA
47	220	Idawati Muas	COMPLETE BASIC IMMUNIZATION SERVICES IN INDONESIA
48	225	Feri Ahmadi	KEBIASAAN IBU MENIMBANG BALITA DI POSYANDU DI PUSKESMAS SEPATAN, KABUPATEN TANGERANG TAHUN 2008
49	229	Lailatul Muniroh, Wahyu Dian Pratiwi	POSITIVE DEVIANCE IN FEEDING AND CARE HABITS OF TODDLER IN REMOTE AREAS SIDOARJO DISTRICT
50	235	Al Asyary	COMPUTERIZED PHYSICIAN ORDER ENTRY (CPOE) APPLICATION SYSTEM ON CLINICAL INFORMATION SYSTEMS STRENGTHENING OF PRESCRIBING IN GMC HEALTH CENTER, GADJAH MADA UNIVERSITY, YOGYAKARTA
51	237	Frans Dany, Frans Dany, N.K Susilarini, Herlinda, Vivi Lisdawati	IMPLEMENTATION OF BIORISK MANAGEMENT IN OCCUPATIONAL HEALTH AND SAFETY DIVISION AT CENTER FOR BIOMEDICAL AND BASIC TECHNOLOGY OF HEALTH (CBBTH) LABORATORIES
52	239	Azrimaidaliza , Idral Purnakarya, Dewi Yurika Sari	MATERNAL BEHAVIOR IN IMPLEMENTING THE BALANCED NUTRITION IN PADANG CITY
53	240	Aan Kurniawan, Pramita Andarwati, Yunita Fitrianti	PARINGAN, THE PSYCHOTIC KAMPONG A CONTROVERSIAL MENTAL HEALTH ISSUE IN PONOROGO, EAST JAVA
54	243	Erna Luciasari, Yurista Permanasari, Fitrah Ernawati	THE RELATIONSHIP MATERNAL HEIGHT WITH THE INCIDENCE OF LOW BIRTH WEIGHT
55	246	Yurista Permanasari, Fitrah Ernawati, Erna Luciasari, Made Dewi Susilawati	DIFFERENCES MATERNAL WEIGHT DURING PREGNANCY IN LBW AND NO LBW CHILDREN
56	248	Almasyhuri, Erna Luciasari	POTENTIAL OF DRIED CASSAVA (MANIHOT UTILISSIMA) LEAVES AS CAROTENE SOURCE FOR PRE-SCHOOL CHILDREN
57	251	Dwidjo Susilo, Nurfadhilah, Triana Srisantyorini	GENDER INEQUITY IN FAMILY PLANNING
58	258	Qomariyatus Sholihah	OCCUPATIONAL HEALTH AND SAFETY (OHS) MANAGEMENT IMPLEMENTATION IN ANTI TB LUNG DISEASE GLOBAL FUND PROGRAM EVALUATION YEAR 2011 IN DISTRICT OF KOTABARU - SOUTH KALIMANTAN – INDONESIA
59	272	Lusianawaty Tana, FX Suharyanto Halim	DETERMINANT OF BACK PAIN AMONG SEVERAL HOSPITALS PARAMEDICS IN JAKARTA
60	280	Heny Lestary, Sugiharti	PERILAKU BERISIKO REMAJA JALANAN KOTA BANDUNG TAHUN 2010
61	281	Sugiharti Ananda, Heny Lestary	PENGETAHUAN REMAJA TENTANG PELAYANAN KESEHATAN PEDULI REMAJA DI KOTA BANDUNG TAHUN 2010
62	282	Qomariyatus Alwi, Ratih Oemiyati	KEBIJAKAN PELAYANAN KESEHATAN HAJI INDONESIA DI EMBARKASI
63	293	Supraptini	POLA PENYAKIT ISPA DAN DIARE BERDASARKAN POLA RUMAH SEHAT DI INDONESIA DALAM KURUN WAKTU SEPULUH TAHUN TERAKHIR

64	294	Selma A.S.Siahaan	ANALISIS KETERSEDIAAN OBAT ESENSIAL DI RUMAH SAKIT DAN PUSKESMAS MENURUT REGIONALISASI BERDASARKAN SURAT KEPUTUSAN OBAT GENERIK NOMOR HK.03.01/MENKES/146/I/2010
65	295	Noviati Fuada	ANALISIS SPASIAL DAN STATISTIK TERHADAP PERUBAHAN STATUS GIZI ANAK BALITA DI INDONESIA (ANALISIS LANJUT RISKESDAS 2007 DAN 2010)
66	296	Rukmini, Betty Rosihermiatie	ANALISIS MAPPING TOPOGRAFIS (KETERPENCILAN, KEPULAUAN, PERBATASAN) TENTANG KETERSEDIAAN DAN KELAYAKAN FASILITAS FISIK PUSKESMAS BERDASAR DEMOGRAFI DAN GEOGRAFIS DI INDONESIA
67	297	Oeke Yunita	ANALISIS DETERMINAN PADA IBU MENYUSUI DI JAWA TIMUR YANG BERPENGARUH TERHADAP PERILAKU KONSUMSI OBAT TRADISIONAL
68	298	Wahyu Pudji Nugraheni	THE STUDY OF DEVELOPMENT MODEL OF INTEGRATED ERADICATION OF NEGLECTED TROPICAL DISEASE (COMPLETING THE MODEL FROM FINANCING SIDE)
69	303	Hajar Sugihantoro, Rustamaji, Cahya Purnama	IMPLEMENTASI STRATEGI DOTS (DIRECTLY OBSERVED TREATMENT SHORTCOURSE) DU RSD DR. SOEBANDI KABUPATEN JEMBER PROVINSI JAWA TIMUR TAHUN 2010
70	304	Rahmayanti Fitriah, Siti Munawaroh, Sri Suryawati	EVALUATION OF RATIONAL DRUG USE WITH STANDARD TREATMENT GUIDELINE IN SOME DISEASES IN OUTPATIENT DEPARTMENT IN PANEMBAHAN SENOPATI REGENCY HOSPITAL, BANTU

I. GENERAL INFORMATION

Time Zone

There are three time zones in Indonesia. Yogyakarta is on West Indonesian Standard Time (Waktu Indonesia Barat or WIB) which is 7 hours ahead of GMT. Indonesia uses the 24-hour system to denote time and schedule.

Currency

The Indonesian unit of currency is the Rupiah (Rp). Bank notes come in denominations of Rp 100.000, Rp 50.000, Rp 20.000, Rp 10.000, Rp 5.000, Rp 2.000 and Rp 1.000. There are coins worth Rp 1.000, Rp 500, Rp 100, Rp 50 and Rp 25 (although the last two have very little value).

Please note that the usual practice of writing the currency is similar to the European custom by using dots for thousands and commas as decimal points. However, since the sen (cent) is no longer of value, a dash will follow the decimal point. For example, an item priced ten thousand rupiahs will be written Rp 10.000,-

Please also note that in colloquial language most Indonesians omit the “thousand” when mentioning prices. Thus an item of Rp. 45.000,- will often just be mentioned as “forty-five”.

Exchange Rate

The exchange rate (as of October 2012) is approximately as follows: US\$ 1 = Rp 9,615,- Foreign currency, whether in banknotes or traveler’s checks, should be exchanged at major banks or authorized money changers. Exchange rates offered by money changers are generally better than the banks; they also stay open longer and transactions are quicker. Look around for variable exchange rates advertised on boards along the footpaths or windows outside shops.

Always ask about any commission imposed before the exchange as many money changers with better rates often charge a small commission.

Automated Teller Machines (ATMs)

There are ATMs all over Yogyakarta which mostly accept international ATM cards and major credit cards. Most ATMs will give you banknotes in denominations of 100.000,- or Rp 50.000,-

Depending on the bank, an ATM will allow a maximum withdrawal of Rp 5.000.000,- to Rp 10.000.000,- per day.

Credit Cards

Visa, MasterCard and American Express are accepted by most of the larger businesses. You sign the amount in rupiah and the bill is converted into your domestic currency by your bank according to US dollar exchange rate.

Cash

It is advisable to keep lots of small change for paying public transport, food, and other smaller businesses. Many smaller businesses may even ask you to pay using small change.

Tipping

Extra tip for the workers would be highly appreciated. A rough guide for tipping would be to add a Rp 5.000,- or Rp 10.000,- in restaurants and bars. For taxi rides, round up the fare to the next Rp 5.000,- or Rp 10.000,-.



Telephone and Faxes

The country code for Indonesia is 62. The area code for Yogyakarta is 274 when calling from overseas, or 0274 when making domestic calls from within Indonesia. Long distance phone calls, both within Indonesia and international, are handled by satellite. To dial your own international calls, find an IDD (International Direct Dial) phone and dial “007” or “008” otherwise you must go via the operator, which is far more expensive. If your hotel has no IDD link you may go to the nearest wartel (warung telepon or telecommunications kiosks) which is a very convenient and cheaper way to make international calls.

Faxes can be sent and received at warnet offices and most main post offices.

Most Indonesian carried mobile phone and usually will bring more than one mobile phone. Most common is the Blackberry handheld and Indonesia is one of the largest countries in the world who use Blackberry. There are several telecommunication providers in Indonesia: Telkomsel, XL, Indosat, 3 and Axis. You can bring your mobile phone and switch the SIM Card. The pre-paid SIM card costs around Rp 10.000,- (for up to 10 minutes conversation to the local mobile phone) up to Rp 30.000,- (for up to 30 minute’s conversation to the local mobile phone).

Internet

Email and internet services are available at an increasingly number of cyber cafes (locally known as warnet) in Yogyakarta. There will be internet facilities at the Symposium venue.

Liability

The Organizer Committee will not be held responsible for accidents, losses or damages to the participants’ belongings and for any delays or modifications in the program.

Force Mejeure

The Organizing Committee shall not be liable for delay or failure to organize the Symposium and Exhibition if such delay or failure is due to fire, earthquake, flood, adverse weather, strike, labor dispute, war, government order, riot, revolution, or any other cause beyond the reasonable control of the Organizing Committee.

Dress Code

Business casual attire is acceptable for the symposium. Please note that dress is informal in Indonesia, but try to wear unrevealing clothes at all times as a mark of respect to the country’s predominantly Moslem values.

Smoking Policies

Smoking is prohibited inside symposium venue.

