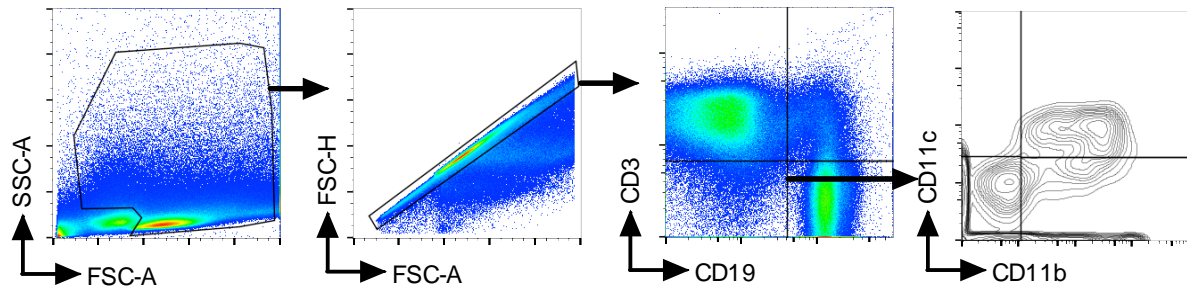


Supplementary material

Supplementary figure 1



Supplementary Figure 1: Mouse splenocyte gating strategy.

Plots show the sequential gating strategy used to analyse the uptake of DiO-NP in immune cell subtypes. Leukocytes are gated by means of SSC-A and FSC-A values, and doublets are excluded according to FSC-A and FSC-H. B cells (CD3-CD19+) and T cells (CD3+ CD19-) are defined. Double-negative cells (CD3-CD19-) are further gated using CD11b and CD11c markers. Dendritic cells (CD11b+CD11c+) and monocytes/macrophages (CD11b+CD11c-) are defined.