

Discourse & Communication

<http://dcm.sagepub.com/>

Organizational decision-making, discourse, and power: integrating across contexts and scales

Winston Kwon, Ian Clarke and Ruth Wodak
DISCOURSE & COMMUNICATION 2009 3: 273
DOI: 10.1177/1750481309337208

The online version of this article can be found at:
<http://dcm.sagepub.com/content/3/3/273>

Published by:



<http://www.sagepublications.com>

Additional services and information for *Discourse & Communication* can be found at:

Email Alerts: <http://dcm.sagepub.com/cgi/alerts>

Subscriptions: <http://dcm.sagepub.com/subscriptions>

Reprints: <http://www.sagepub.com/journalsReprints.nav>

Permissions: <http://www.sagepub.com/journalsPermissions.nav>

Citations: <http://dcm.sagepub.com/content/3/3/273.refs.html>

>> [Version of Record](#) - Jul 27, 2009

[What is This?](#)

Organizational decision-making, discourse, and power: integrating across contexts and scales



WINSTON KWON

LANCASTER UNIVERSITY MANAGEMENT SCHOOL, UK

IAN CLARKE

NEWCASTLE UNIVERSITY BUSINESS SCHOOL, UK

RUTH WODAK

LANCASTER UNIVERSITY, UK

Discourse & Communication
 Copyright © 2009
 SAGE Publications.
 (Los Angeles, London, New Delhi,
 Singapore and Washington DC)
 www.sagepublications.com
 Vol 3(3): 273–302
 10.1177/1750481309337208

ABSTRACT Research has downplayed the complex discursive processes and practices through which decisions are constructed and blurs the relationship between macro- and micro-levels. The article argues for a critical and ecologically valid approach that articulates how discursive practices are influenced by, and in turn shape, the organizational settings in which they occur. It makes a methodological contribution using decision-making episodes of a senior management team meeting of a multinational company to demonstrate the insights that can be obtained from embedding the Discourse-Historical Approach (DHA) to Critical Discourse Analysis (CDA) within a longitudinal ethnography. The approach illuminates the latent and intricate power dynamics and range of potentials of agents, triangulating micro-level discursive strategies with macro-level historical sources and background knowledge on the social and political fields. The article also makes a theoretical contribution by demonstrating the dependency of decision outcomes on often unpredictable and subtle changes in the power–context relationship.

KEY WORDS: *decision-making, discourse analysis, discourse-historical approach, ethnography, macro-micro, power*

... both the agreements made between respective parties and the situations involving seemingly absolute limits are open to being changed under certain kinds of conditions. The change can be the product of mutual agreement if it is not coerced, manipulated, and so forth but requires working through via negotiation. Both the limits and the agreements are potentially contingent. In the most general sense, there are no final agreements and no ultimate limits. . . .

(Strauss, 1978: 259–60)

Bradley: [frustrated] We've got to have that fucking debate again then – I mean is that why we've been stalling fucking Building B?

(Extract from a senior management team meeting)

Introduction

Thirty years ago Strauss's (1978) seminal text *Negotiations* drew attention to the contested nature of decision-making, highlighting the effect of social settings, local, larger-scale, and historical forces, and the impact of power on decision processes. In the period since, there have been a number of major studies of management decision-making (e.g. Allison and Zelikow, 1999; Brunsson, 1982, 1990; Hickson et al., 1986; Pettigrew, 1973). It is therefore surprising that until relatively recently, little attention has been given to the discursive practices of senior management in decision-making practice (see Samra-Fredericks, 2000). Arguably this can be explained due to the tendency to play down the relations and interactions involved (Chia, 1994), resulting in a portrayal of the discursive aspect of decision-making as either: a) locally autonomous and transient (see Alvesson and Kärreman, 2000), such that they are 'talked and texted into existence' (Reed, 2000: 525); or b) the outcome of deterministic influences of macro-institutional structures (DiMaggio and Powell, 1991) that are 'relatively immune to resistance and transformation' (Mumby, 2004: 241). In an attempt to reconcile these relatively polarized views of organizational discourse, a growing body of scholarship situates the analysis of naturally occurring interactions related to strategic decision-making within broader organizational and socio-political contexts.

Within this expanding stream of research on the discursive practices of decision-making however, a number of methodological challenges remain. First, the need to find better ways of systematically connecting analysis across levels of scale and context (Johnson et al., 2003; Latour and Woolgar, 1986; Whittington, 2006). Second, the need for more balanced appraisals of the relative influence of agency and context (Archer, 1982, 1995; Cicourel, 1996, 2007; Van Dijk, 2008; Wodak, 1996) to sharpen understanding of how discourse affects the capacity of social agents to use resources innovatively (Fairclough, 2005). Third, the need to develop nuanced understanding of the interplay between structure and agency affecting discursive interactions at the macro- and micro-levels via ethnographic study (Knorr-Cetina, 2007; Oberhuber and Krzyzanowski, 2007; Sarangi, 2007). Finally, a need for a better way to articulate how power is exercised through social action in the decision-making process (Wodak, 2000a, 2000b).

We confront these challenges by advocating the integration of the *Discourse-Historical Approach* (DHA) to *Critical Discourse Analysis* (CDA) and longitudinal ethnography. The principal contribution of our article is therefore methodological, demonstrating how the four imperatives outlined above can be addressed by focusing on two research questions: a) what discursive strategies are used to create and contest decisions? and b) how are they affected by different orders of scale? The article uses the text of discursive 'episodes' (Hendry and Seidl, 2003) from senior management team meetings to demonstrate a richer understanding of how discursive strategies are employed in context, thereby strengthening the 'ecological validity' (Cicourel, 2007) of discourse analysis. In demonstrating the dependency of decision outcomes on changes in the power-context relationship,

the paper also makes an important *theoretical* contribution, showing how power is exercised dynamically.

The article is set out in four parts. First, we provide a critical overview of the organizational discourse literature to articulate the type of approach that is required. Second, we introduce a sequence of three episodes from senior management meetings and provide a detailed commentary to show how, within the textual genre of a meeting, particular discursive strategies and linguistic realizations are used to reach a decision on the building of a new facility and, in subsequent episodes, how the decision was challenged. Finally, we discuss the contribution of the approach and identify priorities for future research.

Using discourse analysis to understand power and influence in decision-making

While we know that decisions are made by individuals interacting in collective settings through the medium of language, they can neither be reduced to the dialectic of argumentation alone, nor solely explained by the persuasiveness of rhetoric or the pragmatics of the micro-context within which they occur. A powerful individual might stymie the most cogent of arguments and, conversely, a logical and well-timed argument might mobilize sufficient support to overcome the resistance of seemingly powerful individuals. We address this issue by following Hendry (2000: 973) and others (Brunsson, 1982, 1990) in conceptualizing decision-making as an organizational process, 'taking its meaning from the social practice and discourse within which it is located'. We start out from the widely accepted premise that discursive events are simultaneously pieces of text, instances of discursive practice, and instances of social practice (Fairclough and Wodak, 1997). This broader contextualization requires us to go beyond simple descriptions of interactions to make sense of 'who uses language, how, why and when' (Van Dijk, 1997: 2).

As a starting point, we utilize Alvesson and Kärreman's (2000) distinction between 'discourses' and 'Discourses' with the former being used for studies of organizational discourse that focus on micro-scale discursive activities and macro-scale Foucauldian-style studies of societal discourses, such as debates over global capitalism. Crucially, the key question is how to relate these two levels of discourse in empirical work. At one extreme, micro-level approaches (e.g. Boden, 1994; Samra-Fredericks, 2000; Schwartzman, 1987, 1989) are strongly influenced by the paradigms of conversation analysis (Sacks et al., 1974) and ethnomethodology (Garfinkel, 1967) as modes of enquiry that produce detailed, real-time, empirical data gathered through longitudinal participant observation. A strength of this fine-grained approach is that it provides insight into discursive interaction in which agents use language in a practical fashion within the scene of action, and within which discourses are constructed through a series of 'laminated' conversations (Boden, 1994), rather than through static rules (Potter and Wetherell, 1987). At the other extreme, macro-level approaches adopt a Foucauldian perspective of discourse. Knights and Morgan (1995), for

example, used a 'genealogical' approach to examine the impact of changing discourses surrounding information technology within the insurance industry on a particular firm. Between these extremes are approaches that focus on the role of narratives in communication that mediate the relationship between individuals and groups (Heracleous, 2006; Laine and Vaara, 2007), how they evolve over time in response to change (Fairhurst et al., 2002), how they are used to bring about political change (Maguire et al., 2004), and the centrality of discourse to institutionalization (Phillips et al., 2004).

Problems arise from these different levels of analysis, concepts, and definitions of 'discourse'. Without the broader context, 'fine grained' micro-level analyses of discursive interactions in meetings tend to portray strategic conversations as having a life of their own, ignoring the '... fact that situated social interaction is always embedded in daily life socio-cultural and cognitive/emotional processes that constrain and shape discourse' (Cicourel, 2007: 735). Macro-level studies, by contrast, tend to 'jump over' the use of language in social context reasoning (Samra-Fredericks, 2003). With occasional exceptions (e.g. Barry and Elmes, 1997), micro-analyses of discursive interaction and macro-analyses of organizational discourse tend to be performed in relative isolation (Putnam and Fairhurst, 2001) resulting in: i) a 'muscular' force in which meaning and discourse are conflated; or ii) a transient and autonomous view in which discourse and meaning are relatively unrelated (Alvesson and Karreman, 2000). A consequence of this is that power is understood as either tactical and localized or pervasive and without locus, and studies tend to be confined to situations where relationships are based on formal positions of authority, or where expertise and power gradients are clear, as with doctors and patients or teachers and pupils (Oswick and Richards, 2004). The result is twofold: micro-studies fail to adequately 'contextualize' how organizational actors react to broader structural constraints and resulting Discourses (Reed, 2000); while macro-studies leave little room to explain how the broader contexts actually influence these actors' micro-level discursive interactions.

Fortunately, a handful of organizational discourse studies show the way. Forester's (2003) 'critical ethnography' of life in a New York municipality planning department drew on Habermas's (1984/1987) *Theory of Communicative Action* to explain how the presentation and the content of micro-linguistic actions of speakers and listeners interact within the context of management meetings. The study juxtaposed the outer (macro-) context and (micro-) communication in order to see how they impinge on each other and demonstrated the value of ethnographic research in helping to interpret micro-level phenomenon. More recently, a film documentary of a meeting between a retiring CEO of a family firm and four directors to decide who should succeed was analysed from a number of linguistic perspectives by multiple contributors to an edited book (Cooren, 2007). Taylor and Robichaud (2007), for example, used the concept of the metaconversation – the domain of managerial talk that generates accounts of other communities of practice that constitute the organization – to analyse links between individual conversations and broader organizational concerns and the ways in which argumentation between individuals are framed. Sanders (2007)

used a 'neo-rhetorical approach' to examine the influence of individual actors' competencies in the ability of the directors to reach a 'good' decision. Stohl (2007) analysed the pivotal role of a single participant – who from an identity perspective had both outsider (i.e. a non-family member) and insider (i.e. the same religious background as the founder) status – in the decision-making process. Despite their respective contributions however, these studies stop short of studying discursive practices per se within a systematic treatment of context, with the resulting tendency to delimit the examination of power in communication to issues such as: the competencies of individual actors; the effects of organizational structure on actors;¹ or the concentration of power in authority figures (McPhee et al., 2007).

Some of these problems were overcome by Iedema et al.'s (2003) study of how doctor-managers juxtaposed medical and managerial constructions of organizational reality in a Sydney teaching hospital. Their ethnographic approach highlighted the subtleties and complexities of single actors closing off some discourses and dealing with manifold others across macro- and micro-levels. By focusing on an individual manager, however, they missed the opportunity to explore how discursive interactions unfold within and across managerial teams. In this regard, Menz's (1999) longitudinal study of decision-making in a small team of 'friends' is highly useful, showing the effect of small talk and other seemingly chaotic events on decisions. However, the findings are not readily transferable to commercial contexts, where teams are more commonplace and formal hierarchies clearer. Recent research into European Union organizations, such as the Competitiveness Advisory Group (Wodak, 2000a, 2000b), the European Convention (Oberhuber and Krzyzanowski, 2007), and the European Parliament (Wodak, 2009) have begun to address these deficiencies, albeit in formally structured transnational political units where there is little space left for individual agency or variation in contextual constraints. This handful of studies collectively contains the methodological ingredients required to examine the intersection between macro- and micro-contexts and discursive strategies that will tease out ecologically valid explanations of effects of power, but it is the context in teamwork that requires most attention. We suggest that senior executive teams in commercial organizations can be conceptualized as a number of intersecting *communities of practice* (Lave and Wenger, 1991) as well as representing a community in their own right. Each of the overlapping communities (e.g. Finance, Marketing, Engineering) has privileged access to normalized knowledge – in both its explicit and tacit forms (Polanyi, 1966) – that provides a power base for their members. To paraphrase Foucault,² we argue that 'organizational power is knowledge'. 'Normalized' knowledge in one social community, however, does not necessarily endow 'normalized' status in another, with the effect that certain boundaries are imposed on an individual's power. From this perspective, a large organization is a multiplicity of institutionally conferred and legitimated knowledges and, crucially, resistances (Knorr-Cetina, 2007). The implication is that powers in a managerial setting are heterogeneously distributed, and open to contestation and negotiation as various communities of practice seek to secure the hegemony of their own strategic agendas.

THE DISCOURSE-HISTORICAL APPROACH

The particular form of CDA we advocate as a means to bridge levels of analysis can be located within a variety of approaches that examine how issues of power, hegemony, and ideology are shaped through social and linguistic practices central to meaning and organization (Deetz, 1982). CDA has gained ground because it provides researchers with ontological and methodological traction to look at how personal social power develops into the 'habitualizations' and 'typifications' talked about *inter alia* by Berger and Luckman (1967) as the processes that render semiotic devices 'objective', and therefore provide the basis for logics to be mobilized, challenged, (re)contextualized, and made manifest through hierarchy, values, symbols, and practices within organizations (see Wodak and Meyer, 2009). In the context of meetings, for example, Mumby and Clair (1997) saw power being displayed through the organization's dominant ideologies, norms, and values being reinforced, negotiated, and contested. Moreover, Wright (1994) has suggested that power is achieved through the continuous reassertion of micro-processes in the daily life of organizational interaction.

Language is, however, not intrinsically powerful on its own. Rather it gains power through its deployment within the agendas of powerful people. This power is exercised through three related modes (Wodak, 2009), which we differentiate here: i) the power in discourse; ii) power over discourse; and iii) the power of discourses. In the first mode, we are referring to the struggle of different actors over different interpretations of meaning through practices related to: the selection of specific linguistic codes and rules for access to meaning-making forums (i.e. meetings) and interaction (i.e. turn-taking, decision-making, etc.) (Holzscheiter, 2005). The second mode refers to means through which various groups of actors are denied or granted 'access to the stage' (Holzscheiter, 2005: 57) through processes of inclusion and exclusion. The third and final mode is consistent with Lukes's (2005) third face of power, which is ideological in nature and related to Bourdieu and Thompson's (1991) and Gramsci et al.'s (1971) respective notions of symbolic violence and hegemony. Through our engagement with these three modes, we are able to demystify and systematically deconstruct the tacit and hidden practices through which discursive power is exerted, thereby addressing the dearth of empirical studies which closely analyse the dynamics of discursive processes (Mumby, 2004).

Developed in the field of discourses studies, the DHA (see Reisigl and Wodak, 2001, 2009; Wodak, 2001) provides a vehicle for looking at latent power dynamics and the range of potentials of agents, because it integrates and triangulates knowledge about historical sources and the background of the social and political fields within which discursive events are embedded. Four 'levels of context' are used as heuristics to locate discursive practices, strategies, and texts in a specific situational/organizational context. The methodology analyses in a recursive manner a) the immediate, *language or text* internal co-text (e.g. in the context of this article, the transcripts of senior management team meetings); b) the *intertextual and interdiscursive relationship* between utterances, texts, genres, and discourses (e.g. transcripts of individual interviews with team members, other meetings, minutes of meetings etc); c) the *extra-linguistic social/sociological*

variables and institutional frames of a specific 'context of situation' (e.g. observer notes and reflections on meetings); and d) the *broader socio-political and historical contexts*, within which the discursive practices are embedded (e.g. knowledge from ethnography of the organization). These context layers enable researchers to deconstruct the meanings related to contextual levels and frames that impinge on the unique realized texts and utterances. Moreover, the DHA distinguishes between three dimensions which constitute textual meanings and structures: the *topics* which are spoken/written about (e.g. the construction of a new building in our example below); the *discursive strategies*³ employed (both consciously or subconsciously, as illustrated in Figure 1 and explained below) that contain '[P]resupposition[s] [that] can be seen as a way of strategically "packaging" information' (Chilton, 2004: 64); and the *linguistic means* that are drawn upon to realize both topics and strategies (e.g. using certain pronouns and presuppositions either verbally – such as in meetings – or in written form – such as the minutes of meetings, or organizational reports).

The DHA contextualizes utterances in relation to other discourses, social and institutional reference points, as well as socio-political and historical contexts and events. Within this it seeks to identify the effect of particular *discursive strategies* that serve to present the arguments of an individual or a group either positively or negatively. These are: *Referential/nomination* (to mobilize support for an argument through the construction of in-groups and out-groups); *Predication* (labelling actors more or less positively or negatively, deprecatorily or appreciatively so that they are perceived as an 'opportunity' or a 'threat' to the group); *Argumentation* (establishing the logic of the argument by outlining how the issue should be dealt with); *Perspectivation* (reinforcing the speaker's point of view by framing and aligning the issue with them, or a certain field of action, or a certain discourse topic); and *Intensification/Mitigation* (modifying the epistemic status of a proposition in order to position it in the organizational agenda and thus its relative claim on organizational resources) (see Reisigl and Wodak, 2009, for an extensive discussion of these strategies and the related linguistic means). In terms of the argumentation form employed, content-related *warrants* ('conclusion rules') are used to connect the argument(s) with the conclusion (the claim) used in particular utterances, and hence provide justification of the latter. The argumentation warrants centre on 15 possible premises that are explicit or inferable within utterances, known as '*topoi*' that are content-based. A summary of discursive strategies and argumentation *topoi* for our case are shown in Figure 1 and employed in our commentary on the meeting episodes (see Kienpointner, 1992, for further details).⁴

The DHA's methodology focuses on the discourses and discursive practices that surround and connect events, within which language is used in socially ratified ways or 'genres' (like, for instance, consultation compared with interviewing or meetings), and particular 'habitus' or internalized ways of being (Bourdieu, 1984). This analytic approach has been referred to in the field of management, but not employed to date. It enables the analysis of the many, often conflicting and simultaneous strategies that construct arguments in texts and are *recontextualized* to other genres or even *resemiotized* to other semiotic modes (Fairclough and

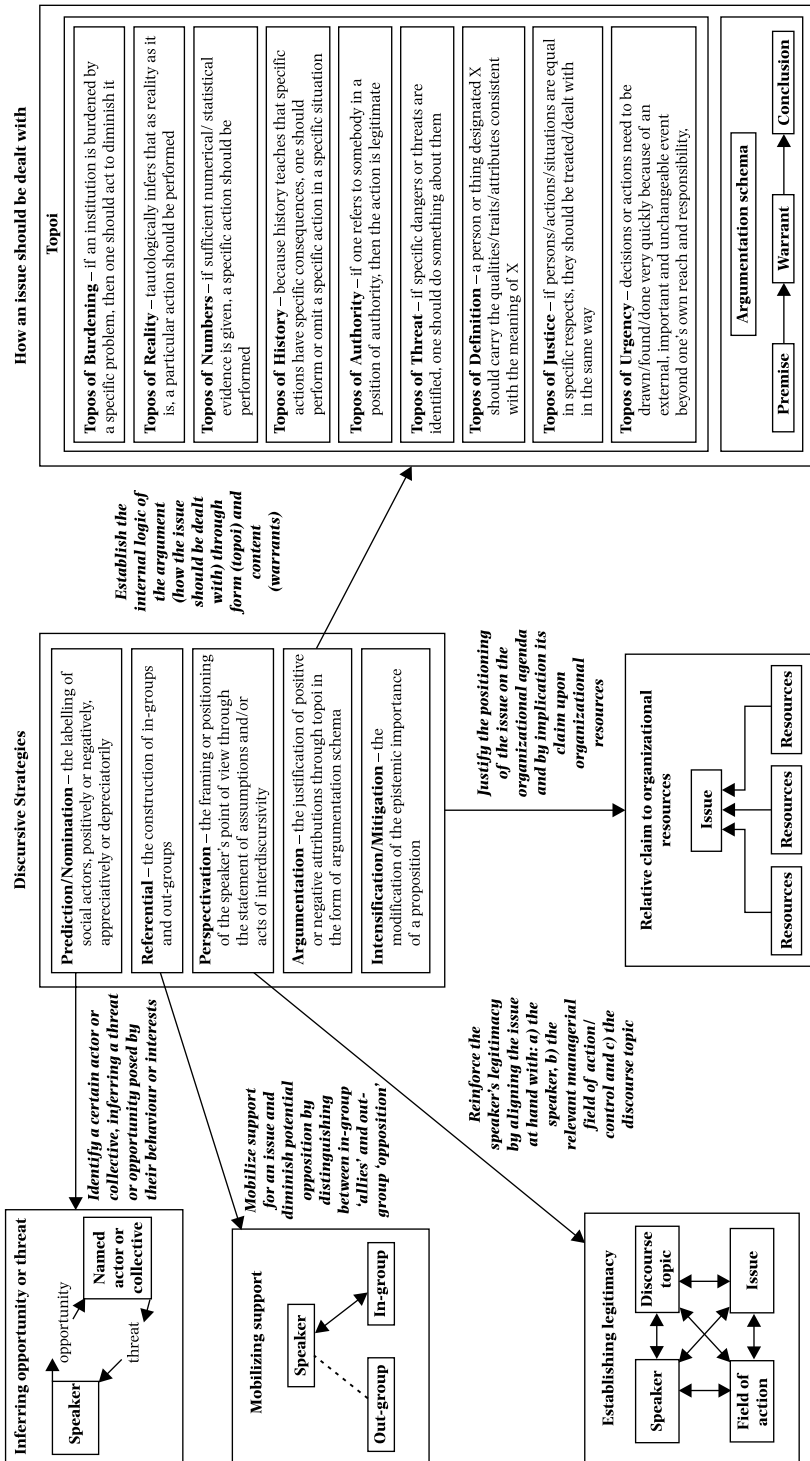


FIGURE 1. Discursive strategies

Wodak, 2008; Wodak, 2008). In this way, *intertextual and interdiscursive* relationships to other genres and discourses, both synchronically and diachronically can be made explicit which often manifest latent belief systems, ideologies, and power relations as well as structures of dominance. Moreover, the approach is problem-oriented and thus inherently interdisciplinary, employing a range of methods and tools for the specific object under investigation (Weiss and Wodak, 2003). Elaborating upon the DHA, we complement the analysis of naturally occurring speech in meetings with interviews and ethnographic immersion of the researchers in the organization (Knorr-Cetina, 2007; Oberhuber and Krzyzanowski, 2007; Sarangi, 2007) to enable methodological triangulation (see above). Although discourse analysts have rarely attempted ethnography, a few exceptions (see above) illustrate how critical discourse analysis and ethnography can be used in combination to ensure valid interpretations of field data.

Analysing discursive episodes using the DHA

In this section we utilize three episodes from a two-year ethnography of senior management teams in a leading multinational company to demonstrate the contribution it can make to organizational discourse studies. We followed the management teams of UK and Australian business units of Defence Systems International (DSI),⁵ a leading corporation operating globally in the defence sector. We interviewed each team member and other stakeholders in-depth before and after a six-month period observing and recording their regular meetings. We amassed a transcribed dataset over 300 hours long, including 90 hours of individual interviews, 180 hours of regular team meetings, and 40 hours of business conferences, review meetings, and strategy workshops. Field notes and other confidential company documents were also accessed to triangulate our interpretations.

The brief episodes we use in this article are drawn from DSI's Australian business unit. Like many large companies in Australia, DSI faces a dilemma over the geographic organization of facilities because of the polarization of labour within a small number of metropolitan areas. This issue provides the backdrop to the first episode from a senior team 'Awayday' in which they discussed whether or not to construct a new building. The second episode comes from a regular meeting some nine months later where they revisited the issue and reach a different decision. The third episode is from an email between a researcher and a member of the team where they clarify the final outcome four months after the second episode.

EPISODE 1: THE DECISION TO CONSTRUCT 'BUILDING B' (NOVEMBER 2006)

This initial episode occurred midway in a larger discussion in which members of the team had been considering their respective inputs into the 'Integrated Plan' (IP) used within the business for assessing future requirements and providing financial control (Figure 2).

The discussion started with Ted, the Operations Director and Will, the Osprey Director (a particular aircraft project), talking about the implications of a new contract that Will had won the day before in Singapore. Since both directors

- 1 Ted: We've taken view on the IP (Integrated Plan).
 2 Falcon Simulator Systems and there's a deterioration across
 3 that. The Kestrel Project, from memory, they ramped down
 4 that, keeping a full aircraft integration capability, but there
 5 is a deep mine in respect to that, so... It's where that
 6 training element, what we're forecasting is the decline. So
 7 what we're forecasting is...
 8 Will: I think it's... so what we're doing is... we're
 9 doing... looking at closing base businesses, and we're
 10 forecasting down to project's end, rather than saying well,
 11 it's capability-based business heading out there, in a
 12 training simulation competency... That's the work that
 13 Dave and Sam have been doing for me, I'm going to get
 14 Nick in there to start to bring that up...
 15 Mike: I don't mind looking at the capabilities... for the
 16 purposes of the IP, you're going to have to deploy that
 17 capability on projects, you're going to have to badge it
 18 against projects at some point... [Will: That's what we're
 19 doing...] to build up your IP, but from a capability point of
 20 view, from a business point of view, we've got to be
 21 planning your facilities at a higher level you know, than
 22 project by project.
 23 Greg: [emphatically] You're never going to... you'll
 24 never get at it that way.
 25 Will: Yeah... don't... I'm not disagreeing with that...
 26 Greg: If you follow trends in the workforce, and Harris
 27 you correct me... is that the workforce has been growing,
 28 take out the contracts like Norwich with about 80 people,
 29 take out Flight Simulation with about 100 people that went
 30 across. You'll see the trend is the business grows...
 31 continually... think about the options we're talking about.
 32 That'll have some implications... you think about to get
 33 down to the finer detail of what's going to happen with the
 34 Training Aids, in and out, what Singapore could look like
 35 Grey Box-wise etc., it almost sounds to me like the IP
 36 numbers that you've said are fuzzy-like, its not really fixed,
 37 I'm in a place that says, have a look at the capabilities side
 38 of it, you've got 800 people, you've got the people that
 39 you've got today, you plan on that basis but there's... you
 40 do a match against the programmes, perhaps label the
 41 capability but by and large, you've got what you've got and
 42 it's going to change by two or three, four hundred people is
 43 what we're saying today.
 44 Mike: There's a burden there behind you guys.
 45 Bradley, I'm at the same place as you, that probably the
 46 only difference I'd make to that I'd say, we've got what
- 47 Greg: ... which is where I've been for the past three or
 48 four years... [more laughter] ... Harris keeps trying to talk
 49 me out of it... I just keep saying 'I don't believe them...'
 50 Harris: Well we, we obviously need to do some more
 51 scenarios around this because this as I say at the moment is
 52 showing that even on the probable scenario which includes
 53 the 10% of additional labour across all projects, includes
 54 Singapore, that we'd still have and let's just take 211 for
 55 convenience, 112 surplus space plus the potential for
 56 another 107 so that's 220 odd... based on this. Now the
 57 scenarios that we've also got in the pack, the cost-based
 58 scenario, that we've looked at MMA, we looked at Brunel... okay
 59 and obviously they... they're not in the probable because I
 60 got that you were...
 61 Will: Well when I said I was dodgy about Singapore...
 62 Harris: ... but you're also very dodgy about MMA.
 63 several people talk at the same time!
 64 Greg: ... so you've got \$60 million in five years and
 65 \$70 million in five years... I just think that that data...
 66 Will: Very simply. I just think that that data...
 67 Harris: ... well then... \$60 million is \$30 million and \$30
 68 million of that increase is taking that doesn't actually exist
 69 in projects... it's flat there and that's assuming that
 70 inflation's going at 3% per annum.
 71 Greg: ... so we're going to drop to that... okay say we
 72 are at where we are today. The business doesn't change in
 73 the next five years, we're going to drop 300 people. I don't
 74 believe it.
 75 Bradley: Neither do I. [Greg: I don't believe it.] Which is
 76 end up...
 77 Mike: What would be the quality of the accommodation
 78 if you decided to... the other thing you've got is that
 79 Aberdeen Hills site... we've got a whole bunch of people in
 80 the Evans Building, we've got a bunch of people in sort of
 81 start to refurbish very old buildings... so we can move the
 82 people from the north to the south...
 83 Adam: You've got to consider the infrastructure that
 84 comes with that, for example the small cafeteria that's used
 85 on the southern side is apparently well utilised, so we're
 86 going to have to increase perhaps the size of the cafeteria
 87 on the northern side so there's extra cost, and there's
 88 potentially additional car parking as well because we can't
 89 park all on the road, and the additional car parks we have
 90 will not accommodate the 400 or whatever it is on the
 91 southern site, so there's additional car parking, cafeteria
 92 infrastructure type work as well that has to be
 93 accommodated if we go for building B, and then if you to
 94 for building B...
 95 Charlie: Yeah but...
 96 Adam: I think and my view is... sorry Charlie... to get out
 97 of the leased buildings... the main ones, we've got those
 98 until 2008, so if these numbers are anywhere near correct,
 99 by the time we get out of that by the end of 2008, according
 100 to these plans, we don't have a surplus on the site.
 101 Mike: Well we do, I mean we don't have the surplus,
 102 Charlie: I don't believe it... you make your decision on
 103 what it is.
 104 Adam: So here's the debate. You make the call now and
 105 say we will, or do you go based on what Harris's doing and
 106 what I've been part of which is try to bottom this up and
 107 find out what actually... [several people speak at once] and
 108 then you make the decision, are you going to build on
 109 Aberdeen Hills and/or Outer Bay, or do you build in
 110 Melbourne and/or Sydney?
 111 Bradley: I think, we've got what we've got. We've got
 112 people spread all over the fucking place in really sub-
 113 standard operating environments. We've got a huge
 114 challenge around the business in terms of retention. We're
 115 not going to assist our cause on retention at all without a
 116 half decent working environment that facilitates
 117 communication on site, which you could say is
 118 dysfunctional at the moment, so if you take the decision
 119 that you're a sustainable business, which I don't think any
 120 of us doubt, is get onto it and create the environment that's
 121 going to attract people and build the building

FIGURE 2. *Episode one*

forecast a headcount decline on site, neither person had tangible support for the new building. Nonetheless, Will emphasized the validity of his data by naming the individuals who produced them. They both used the pronouns 'we' to endorse the forecasts as a warrant for their views, which implied that the assumptions were shared (a Referential discursive strategy constructing a 'we' group). It is also useful to note that Will had just come in a few minutes earlier directly from the airport, jetlagged after a long international flight, a condition that may explain his hesitation and 'hedging'.

We know from interviewing Will beforehand that he felt that 'It's not all in the numbers' in terms of the Osprey programme's support of the new building. He said he had previously told Chief Operating Officer Bradley that the new building was needed to make the Aberdeen Hills site a more inspiring place to work, but told us there was too much uncertainty over Osprey to build the estimates into the plan, which colleagues were pressing him to do (Will, entry interview, pp. 23–4). Despite this frustration with Will, colleagues talked highly of him. HRD Adam said 'We've always thought . . . Will is the person . . . you're always seeing in the potential for the CEO role . . .' (Adam, entry interview, p. 19), and CEO Mike recounted 'I'm really impressed . . . I need to give him something more to do . . . the obvious job is mine . . .' (Mike, entry interview, p. 18). Not surprisingly, therefore, whilst Mike pursued his own *Perspectivation* and questioned Will's bottom-up approach to headcounts – he attempted to *Mitigate* his comments with the statement, 'I don't mind . . .' (15) but intensify the strength of his argument through the directness of his language. Greg, another outspoken team member, reinforced this *frame shift* (a change of topic, perspective, or argument (see Goffman, 1967, 1981) by agreeing with Mike. Using an emphatic tone and addressing Will individually as 'you're' and 'you'll' (23–4), he emphasized (*Intensification strategy*) the epistemic importance of the issue and distanced himself from Will's approach. We know from two interviews with him that he believed the team tended to get bogged down with operational concerns, which perhaps explains his impatience. Criticized by his boss and his peer, Will responded with diffidence, concessions, and hedges, saying that he was not disagreeing with Greg's view (25); then he used *Mitigation* and partial concession to distance himself from his own initial comments.

Greg then made a relatively long statement using facts to support his view that Will's approach would not work, mentioning: 'trends in the workforce' (26) to legitimize his perspective, asking Harris to correct him, by implication, if he is wrong (26–7), and listing areas of the business (as evidence) that showed it was growing 'continually' (28–31). The request by Greg for Harris (the Finance Director) to 'challenge' him is useful to our understanding of the discussion at a number of levels. First, we know from our ethnography within two DSI businesses that Financial Control is a 'strong' practice and discourse within the organization because the Group CEO (Mike's boss, Jack) has a finance background. Second, in regular review meetings with him, we observed the high regard that Jack had for Harris, because of his financial acumen and similar background in the organization. Third, Greg's request to challenge him would mean that Harris would have to argue against the *Topos of Numbers* that he represented in an organization where 'finance is king'.

Greg proceeded to challenge Will, prodding him to 'think about the options that we're talking about' (31) – and by implication, that he is not – to 'get down to the finer detail of what's going to happen' (32–3). He reinforced the challenge by referring to the numbers that Will was using as 'fuzzy-like' (36) and drawing his counter-argument together by offering a contrasting perspective, saying that 'I'm in a [different] place that says . . .' (37), repeatedly challenging him with requests to 'you've got' to add up the capabilities and look at the gap that is left. Here, he used the *Topos of Reality*, arguing that the numbers 'are what they are', and that Will's numbers did not adequately reflect the future requirements for facilities. In short, he stressed that the winning of the Osprey Project created contradictions in the IP that the team had not reconciled. The intervention prompted the MD to refer to the state of affairs as a 'burden' (44) for the team to think about (*Topos of Burden*), a form of *Perspectivation* in which he reminded them they still had work to do to close the 'gap' between the IP numbers and the revenues that were foreseeable based on conservative estimates of future business – a stretching process known as 'tasking'. In doing so, Mike moderated his earlier critique on the discourse of Financial Control by underlining its continuing relevance to the team.

With Greg's challenge to Will centring on the need for a balanced view bridging both bottom-up and top-down viewpoints, second-in-command Chief Operating Officer (COO) Bradley then interjected using the *Topos of Reality* form of argumentation to say essentially 'we've got what we've got', implying that the New Building was justified despite additional growth in the two of their other facilities in Melbourne and Sydney. In pointing out the incommensurability of their arguments, he symbolically drew together the arguments but implied the diversity of views meant that they had better get on and 'build the fucking building' (50). In this way, he reinforced the MDs challenge to bring the arguments together to deal with the 'burden' and implied both perspectives had merit and needed to be reconciled; but he also formed a new argument which shifted the frame by broadening the 'pie' and used his authority as COO to do so. His use of expletives diffused tension and at the same time concentrated minds on what he, as COO, felt mattered: a New Building.

The MD – who often used humour in meetings – followed up stating that what the COO was saying was the same understanding he personally had had 'for the past three or four years!' (52–3). He joked that the FD (who he had said he respected personally) kept 'trying to talk me out of it' but that he did not believe them (53–4), and supported Bradley's argument for the *Topos of Reality* to say that the situation had not really changed. This statement diffused things further using *Mitigation* to downplay the emphasis on the *Topos of Numbers* that he expected would come from the FD. He referred to the fact that they had a strong element of shared knowledge or expertise of the problem between them, and used challenging humour to spotlight the key issue and draw things to a head, relying on his powerful role to do so. As we might expect, the FD was almost forced to respond. He reiterated the *Topos of Numbers* to emphasize his commitment to the need for a bottom-up justification of the New Building (55–6), albeit mitigating his own comment by implying the 'hard numbers' of Financial Control will

need to be understood within some broader scenarios regarding future business growth on two contracts. In essence, he asked the team to provide new bottom-up estimates consistent with the emerging consensus, effectively putting Will on the defence, as his project estimates were now the single largest source of the gap between the bottom-up and the top-down views. It is perhaps not surprising then, that Will started to reformulate his previous statement by explaining *why* he was 'dodgy' about the Singapore contract (66). The FD then made quips and employed *Intensification* and *the Topos of History* to cast further doubt on Will's estimates (67).

At this admittance, Greg chose to reinforce his own case using the *Topos of Numbers*, pointing out inconsistencies over the next five years (69–71). The FD then drew attention to the problems with the numbers, explaining they were inflated because they had targets tasked into them (73). Greg proceeded with the numbers, but all his justifications were implicit, and he appeared to be drawing on, and presupposing, a higher level of shared knowledge within the group to make his point, saying 'I don't believe it' (78–9), effectively excluding those who did not know what he was referring to. The result was to create a dialogue between those who are 'in the know'. The COO Bradley then employed vagueness to say that this was why 'judgement' was needed in the absence of adequate headcount projections as warrants for the *Topos of Numbers* (80–1).

To complete this sequence and change the frame of the discussion, the MD Mike then stepped in to latently moderate the whole meeting and move things along by refocusing the discussion on the *quality* of the accommodation they had (83–4), which was only 'half decent' (87). By introducing another discourse topic, he backed the COO's call for a judgement to be made, but took the discussion back to people issues and away from numbers, characterizing them as a 'whole bunch of people' (86). He emphasized broader considerations consistent with what he had said to us prior to the meeting regarding the challenge they had to 'balance the work-force' across their various sites in Melbourne and Sydney because it was easier to recruit than in Adelaide (Mike entry interview, pp. 20–1).

Charged by Mike to Chair the discussion, HRD Adam then talked about what personnel actually *needed* in terms of facilities, drawing on inter-discursive arguments and knowledge (90–1). He broadened the understanding of the New Building problem, picking up on the judgement issue raised by Bradley, and reframing the issue by noting that the current debate was not only about building capacity (e.g. enough desks and workspace), but also about existing facilities being of poor quality. He concluded, saying that over the next few years they would not have surplus space on site (105–7), a conclusion powerfully reinforced by the MD (108) and another director, Charlie, who called for a judgement about what business and facilities they *had* (109–10), rather than fallible projections of what *could be*. Adam then attempted to summarize and bring discussion to a close using *Perspectivation* and *Intensification* by posing as an intermediary between the bottom-up approach to Financial Control (represented by the FD), and the need to 'make the call now' based on top down evaluation (111–17). In doing so, he called for a decision.

The HRD call for a balanced decision was important in terms of the broader constraints the business was operating under in Australia. He had privately raised with us the limited skill base as a major constraint on their ability to grow, especially in engineering. Not only did they face competition from other defence companies in South Australia but also from multinational mining companies, leading to a higher labour attrition rate than in other businesses. Adam noted that ‘finding people and keeping them is a key element of our strategy going forward’ (entry interview, p. 8). He appeared to use the episode to emphasize the bigger issue about where to expand the business, given the growing concerns in the organization about recruitment and retention – a constraint that was corroborated with some of the middle-level HR managers who worked for him, who emphasized Adelaide as a ‘backwater’ to attract young people compared to other state capitals (Francyne, entry interview, p. 6), because ‘that’s where people see their long-term careers being based’ (Linda, entry interview, p. 4). Over the next six months of our observations of the team in meetings, this issue became an increasingly significant topic of discussion.

To close the episode, Bradley used his authority as COO by giving a value-driven statement that linked the call for a decision by Adam to other discourses by supplying more evidence (warrants), emphasizing the ‘sub-standard’ (119–20) nature of accommodation, the need for a new building to improve retention of people (122), and the ‘dysfunctional’ (125) nature of inter-functional processes due to the current building arrangements on site, which also needed to be addressed to ‘attract people’ (128).

EPISODE 2: RECONSIDERING THE DECISION TO BUILD (JULY 2007)

Nine months on, at the end of a team discussion focused on the need to balance an ‘enterprise view’ (i.e. the good of the business overall) with a ‘business unit view’ (i.e. different needs for resources in parts of the business), the team again resurrected the issue of the new building (see Figure 3).

HRD Adam began by asking whether or not the enterprise-business unit conflict was confined to their Aberdeen Hills headquarters. The MD Mike, Adam and Ted agreed that it probably was, as other sites were made up of functions or business units (1–32). Adam ended with a seemingly throwaway comment – ‘So I think there’s something about this site . . .’ (31–2), echoing the recurrent debate we had seen in meetings over the intervening months since the first episode. A number of the directors had told us that the tension centred specifically on the Osprey programme and the Engineering function over the allocation of skilled personnel, and we found out that Will was at the centre of this debate, accused of prioritizing the Osprey programme over the needs of the enterprise as a whole. As COO Bradley said:

the problem . . . lies with a few individuals who operate on a very clear personal premise that their responsibility is purely for their area . . . the solution must involve a degree of compromise and a degree of sharing of resources . . . Will seems unable to do that . . . twelve months ago he was considered to be the heir apparent to Mike . . . today he would not be considered heir apparent at all . . . (Bradley exit interview, pp. 2–9)

Mike corroborated the change in Will's fortunes, saying that the challenge was now to 'fix Osprey'. He told us that the designated succession plan was no longer going to work as some of Will's behaviours made it less likely (Mike, exit interview, p. 7). Adam too, said '... Osprey ... is a reflection on Will. Osprey is not the shining light that we perhaps saw six months ago ... It is, without a doubt, the most problematic part of the workforce' (Adam exit interview, pp. 6–7). By the second episode, therefore, Will's standing had been weakened and he was being blamed for employees' disgruntled views of DSI in the Hewlett Report – a recent opinion survey across major Australian companies.

In response to Adam's point about Aberdeen Hills being different, Mike then joked provocatively that maybe they should 'close the fucking thing' (33) on account of ongoing conflicts. However, Joe, the newly appointed Director of Air Systems, who had joined a few weeks earlier and had no knowledge of the previous building debate, inadvertently opened up the conversation again by reflecting on issues raised at an employee feedback session held the previous day, expressing surprise over the level of employee discontent towards the site (38–41). This chance remark reminded others of the previous building debate – an issue which was already debated and decided upon – prompting Mike to perspectivize Joe's observations by invoking the proposition that there was no alternative (*Topos of Reality*), saying 'we can't physically move it' (42–3). Joe intensified the discussion by joking about an employee suggestion that a monorail be built to link Aberdeen Hills to the City Centre. More conscious of the history and implications of the building debate, Mike responded by employing a strategy of *Mitigation* and suggesting a realistic solution: a travel allowance for employees (47–55) given the length of the commute from the city (57–60). He moderated his comments using made-up words such as 'end-buggeration' (60), delivered in a broad Northern Irish accent.

There is less need to analyse this second episode in full detail, since it is now possible for the reader to discern how the discursive strategies were used. Instead, we highlight the principal features of the episode. Adam's frame-shifting intervention in response to Jim's claim that he could not move the building proved crucial: he said that it was possible to move *some* of the functions (72–4). The proposal 'tipped' the discussion and allowed Ted to escalate the issue by saying that the engineering function had the most problematic employees, an issue that could be addressed by moving them closer to the city (90–7). Will re-entered the conversation, arguing he had under-represented the engineers' negative sentiment towards the current site in the original discussion (109). He prompted Adam to admit they had made the first decision because of the powerful mandate given by the Group CEO, Jack, a relationship the MD described as 'playing cards with a bloke who has all the cards' (Mike, exit interview, pp. 11–12). Later, Will referred to the wider cultural discourse around 'Generation Y' employees to reinforce the argument that younger engineers had different lifestyle expectations and did not want the long drive from their city centre apartments. His use of the *Topos of Culture* to explain the Avionics Group engineers' sentiments, provided the warrant to split the site under the *Topos of Advantage*, but Bradley resisted using the *Topos of Justice/Equity* (132–9) arguing it would have a divisive impact.

- 1 Adam: Just a bit off on process – we talked about it yesterday and we talked around the need to resist that enterprise view across the business I think is really important, not only for managing talent but also for having people responsible, I think particularly on this site – and also wonder, and I was thinking about this yesterday – do you think it's possible to have a site that's a bit different, 8 sites and really when we talk about these issues, are there really more manifest in this site than others? I don't know, 10 there are some uniqueness about this site about having different business units and functions, buildings and complex and 12 different history, which would drive a different culture, I'm 13 not saying it's better or whatever but I wonder sometimes 14 when we talk about these issues, in a sense, are they more 15 around this site and less about Kingston or Melbourne or 16 wherever. Just an open question.
- 17 Mike: They're certainly different. There's more people on 18 this site in light of anywhere else. Not in itself – as I say, 19 they're much less self contained – so everyone in Kingston 20 is part of a set of central services, whereas here you've got 21 nobody wants to own, and then you've got some of jobs 22 people and some of Will's people. Everybody there owns 23 somebody there sort of thing.
- 24 Adam: As I say, the independent kingdom of Alexandra 25 Park as a British stronghold – a very positive sort of culture, 26 although it's quite a distributed business, but it's 27 still – but I can't honestly say I've tested it because I haven't 28 gone to the bloody DSO place and wherever it is.
- 29 Ted: You would still find a reasonably strong culture. 30 Mike: So I think there's something about this site, but 31 anyway I think the enterprise view.
- 32 Mike: ... that and we'll close the fucking thing.
- 33 Joe: You know another issue about this site which is the 34 thing that came out yesterday that was absolutely clear was 35 that we've got a lot of people on this site, yesterday was a very 36 broadly held view that there is a broad level of discontent 37 about the environment here and – and there's nothing you 38 can do about it perhaps, but it's certainly not some isolated 39 radical, it's a broadly held view at that level.
- 40 Mike: It's a bugger of a site. We can make the site better, 41 but we can't physically move it.
- 42 Joe: One of the radical ideas was a monorail!
- 43 Mike: I'll tell you what we could do...
- 44 Adam: Is it a project for us to build it?
- 45 Mike: ... what we could do is – we could say, okay guys, 46 let's be delivered to be a long commute in this city, you see 47 how ridiculous it is, and we'll pay a travel allowance. We 48 recognise it and that we will pay a travel allowance. We 49 could do something that recognises that, albeit that pretty 50 well the whole defence industry is here and that which isn't 51 in fucking Outer Harbour which is even harder to get to 52
- 107 decided as an EC that that was not a practical option – to 108 split and create another site in city.
- 109 Will: Well I don't think I represented it well at all.
- 110 Adam: Well to be fair, I'll tell you my view of it.
- 111 synopsis of that discussion was that I don't think Will 112 represented it fair, I don't think I represented it fair, I think 113 we were given a mandate by Jack, which was just go and 114 build Building B, and we just took that as our mantra.
- 115 you're right, we did do the sums around leasing property 116 around the city centre and you've stuck it up against the 117 cost of Building B, and you're right, Building B was a better 118 fit for all of that, we really thought through Avenue shift 119 work and some of these other things that are coming up.
- 120 Bradley: (frustrated) We've got to have that fucking debate 121 again then – I mean is that why we've been staffing fucking 122 Building B.
- 124 Adam: No, no.
- 125 Will: I don't think it's a matter of Avionics of which work 126 either, think it's a matter of Avionics. And you've 127 mentioned a bit about Generation Y, and that sort of thing.
- 128 But a lot of the workforce that we're getting – the younger 129 guys, they're living in closer to the city, they don't want to 130 have to do the commute and the question for me is – is that 131 going to become more and more of an issue?
- 132 Bradley: One of the points that came out of the discussion 133 we had that there are few points, but one major point was 134 splitting sites, managing the logistics of that around the 135 activities, the second point was, if you – if you do split sites 136 and you put the core engineering group in a city site, you'll 137 have an enormous amount of pressure for everybody else 138 out there (Adam: I can agree with that; I do say, why haven't 139 got the option of going in there?)
- 140 Mike: That was the major problem.
- 141 Will: ... and that's why I actually agree with you Bradley 142 on that one, because it does create a bit of an 'us and them', 143 it creates a matter of, if someone's working in the city, and 144 projects are sent out there, it's a matter of, what's the risk of 145 not doing that, what's the risk of not doing that, what's the 146 (losing them to the organization. So that 'stickiness' as I keep 147 going to exacerbate that situation. So I think that had merit 148 in it, which is the part which I agree with, but then the other 149 part of the dilemma is how well do we keep people 150 engaged and attract and bring them out here, so you know, 151 the other question in my mind is then, do you then sort of 152 Green or close to the city and gradually the organization 153 start to stop – maybe more of them end up starting 154 there. That's a long-term goal that may take years to get 155 there, but it's a story of incrementally the centre of 156 gravity into a closer to the city site, which makes more 157 people accessible – that's an option – I don't know.
- 54 from anywhere so I'm not sure, but there is a level of 55 discontent.
- 56 Ian C: So that's the key thing, is it?
- 57 Mike: The facilities aren't good, but we could fix that. We 58 could build another one of these and that's what we're 59 planning to do, but the bigger end-suggestion for people is 60 that that drive...
- 61 Adam: I think that we'd be surprised what a strong 62 understanding of feeling there is on this site coming this 63 direction, coming, and I don't just mean towards this 64 distance. When they see Raytheon, Saab, everybody else at 65 either Outer Bay or down at Oxford Green and when I think 66 one of the bigger challenges coming forward, when you 67 want people on Avionics for example, you'll find that 68 shift work, it's going to be a challenge.
- 69 Mike: Yeah, but it's kind of one of those, you know, God 70 gives me the strength to receive things that I can do 71 something about. I cannot move this site.
- 72 Adam: Yeah, but you can move Avionics to Oxford 73 Green.
- 74 Green: I just, you know, just challenging that because, has 75 anyone looked at what would be the impact of moving the 76 site?
- 77 Mike: Yeah, we've done a couple of times, we'll go and 78 do it again.
- 79 Adam: Will raised once before at this table, alter one of the 80 options that about, before we decide on Building B, is there 81 an option to move Avionics or, you know, split up this 82 site, and have Avionics, I don't remember properly 83 (re-ascended the feeling around, from the Oprey group 84 towards this site.
- 85 Mike: I mean if you said, "Can we move a couple of 86 hundred engineers somewhere else?", I think we probably 87 could. Can we get 1,200 people out of manufacturing 88 facilities somewhere else?
- 89 Adam: No, but you might make a decision about splitting 90 this site.
- 91 Ted: I don't think you're getting a lot of issues from the 92 manufacturing side around this site.
- 93 Adam: But if this is the manufacturing side and you put 94 ALR machining on here or whatever, but you might then 95 decide you want to put more people closer to town from an 96 Engineering...
- 97 Mike: I'm fine with that, you know if there's a sensible 98 world way that you can do it. (Adam: you might...)
- 99 because, from what I hear from people here is that, you 100 know, it's makes it inefficient to go from one building on 101 this site to another building on this site, and then, but to go 102 for another building 10 kilometres away? So that's what we 103 made our assumptions on...
- 104 Bradley: (sighs) But we, we – in this I'm – at some length, and we 105 falling me – we went through that at some length, and we
- 161 Bradley: Well you'd better get on it and make – if we have 162 serious discontent about a decision we appear to have – I'd 163 though we'd taken, we'd better hurry up and get that 164 debate back on the table.
- 165 Adam: I think the other thing that's come through Harry, 166 over the last six months since we've made that decision is 167 that you know, as we've got out of the southern site, we're 168 still being pressured on location, we don't have Building B 169 you're right – it's under construction, so it's really driving 170 Will and I think that's driving the debate as well. The other thing 171 is, you know, I've Scott lined up, when he gets back from 172 the UK to have a meeting with me, with the EC, to go 173 through Building B, and there are plans around that in terms 174 of the footprint and whatever. Um, and I think that we 175 can have a discussion about, you know do we want to open 176 it up to see whether there's an opportunity to move other 177 people off this site. In the mean time, under Jim's okay, I've 178 had Sam have a look down at Oxford Green to contact the 179 guys down there, because I think I've got a pretty 180 good idea of what they're doing. CSC, the guys out of 181 their building, they're going to build a brand new one.
- 182 CSC: All that sort of – Motorola, so we've got a feel of the 183 buildings and the opportunities down there, if we want to 184 take it up. It's only very early days, haven't made any 185 commitment, so I can start to paint a picture of what... 186 Mike: Well as I see, we did go through the exercise, if we 187 think it's worthwhile through it again because we think 188 something had changed or you felt that the case wasn't 189 sufficiently well put that time, we need to get it on the table 190 and get it off again quickly.
- 191 Will: When I accepted the decision at that time, because 192 I felt that – and I still believe that if I go and put people on a 193 city location and then I want to move them out here to do 194 something, I run the risk of losing them.
- 195 Mike: I agree and you will then – I think you will create 196 an expectation – I mean, I won't go through all of this again, 197 but the people who are left on this site... 198 Adam: Second class.
- 199 Will: That's right.
- 200 Mike: ... you immediately create a problem.
- 201 Mike: It's how to deal with that, that's the concern.
- 202 Mike: Which is why when you look at what high paid – if 203 you look at for example, the capability green solution at uh, 204 in avionics – you have to move everybody, you've no 205 option. You just have to fucking move everybody, I mean 206 from Milton Keynes to Northampton wasn't much of a 207 bloody choice for people. Or not Milton Keynes – was it...?
- 208 Will: It was Milton Keynes...
- 209 Charlie: Yeah it was Milton Keynes.
- 210 Will: ... and there was a big outcry in the beginning, but 211 in the end, most of the people moved.
- 212 in the end, most of the people moved.

FIGURE 3. Episode two

Crucially, however, Adam pointed out the situation had changed significantly since the earlier discussion, weakening the validity of the warrants used to support the New Building case (166–72). He intensified the counter-argument by saying that Scott had already evaluated possible alternatives so that an assessment could be done quickly to minimize delay (172–6). Mike acknowledged the possibility that the assumptions (warrants) that supported the previous decision may well have changed, thus justifying the re-opening of the debate (188–92). He also added another warrant through the *Topos of Urgency* to the re-evaluation initiative (*Intensification*) by pointing out a similar decision to split a site in the UK ultimately resulted in the need to move the entire group – thereby alluding to another potential frame shift of the issue as one of moving or not moving the entire headquarters (204–9). Adam, Will, and Charlie each acknowledged their recollection of the event, an interchange that served the dual purpose of expressing team solidarity and bringing the episode to a conclusion.

EPISODE 3: AN EMAIL EPILOGUE TO THE DISCUSSIONS

The third episode consists of two excerpts (1–14 and 15–21) from an email conversation between one of the researchers and Adam (HRD) regarding the outcome of the re-evaluation some four months after Episode 2. In the first part, Adam confirmed the decision to present the Building B proposal to Fred (UK COO and second to Jack in the UK hierarchy) for approval in September had been postponed (2–3) for further consideration (6–7). What is interesting is that this excerpt reveals the interactions captured in the first episode were in part due to the need for Mike to seek further warrants to support the proposition to build Building B, rather than a simple ‘bottom-up’ justification exercise that would normally be created through the IP process. Seen in this light, it is clear that Mike had been pushing the team to come up with a ‘top-down’ intuitive case for Building B – a position achieved by the end of the first episode. This suggests that the first decision was something of a *fait accompli* created by Mike and Jack and, in the email, Adam indicates that the consultation process was now completed and that the capital expenditure case for Building B was of the ‘Right Order of Magnitude’.

In the second email excerpt, Adam clarified the outcome of the re-evaluation prompted by Episode 2. Although the decision to build Building B was now back on, it is interesting to note Adam’s wording here: in line 16 (‘There are those on the EC . . .’), in which he subtly distanced himself from others in the team and ownership over the final decision – implying ongoing resistance by using the word ‘those’ rather than the more standard ‘we’ and thus positioning himself as non-belonging or outsider distinct from ‘those’. The *Topoi of Justice* and *Advantage* have clearly won out as the dominant warrants supporting the argument to build Building B. In conclusion, if the first episode was significantly orchestrated, the second episode demonstrated Adam’s continued resistance within the context of the problems over the Osprey programme. This suggests that Adam and Will had simply seized upon the opportunity inadvertently raised by Joe, as a means of addressing retention and recruitment issues, rather than their argument being

1 Building B Capex and business case was prepared for the
 2 September QBR here in Australia. Outside the QBR Mike
 3 decided not to present to Fred. His concern was that the
 4 Capex was a ROM (Right Order of Magnitude) rather than
 5 an exact actual cost. Since then we have had follow up
 6 discussions here in Australia and further consultation with
 7 stake-holders in the business. Importantly we have met with
 8 Mike and broadly taken him through the Life Cycle
 9 Management process for facilities, which has as a step
 10 exactly what we were proposing in September. As such we
 11 will now represent the business case Capex and other
 12 supporting documents at the next QBR later this month.
 13 This again will be a ROM price....
 14
 15 We have decided not to move the Avionics to the city.
 16 There are those on the EC who believe this would lead to
 17 separate cultures and not be economical. Therefore the
 18 travel allowance question is resolved. We decided that on
 19 balance the childcare provision should be put on hold. The
 20 feeling was we have many other initiatives to put in place
 21 before this one.

Offsite EC Meeting (9th November 2006, Adelaide Oval)

Adam	Human Resources Director
Bradley	Chief Operating Officer
Charlie	Director of Radar Systems
Greg	Director of Contracts and Procurement
Harris	Finance Director
Larry	Director of Engineering
Mike	Managing Director of DSI Australia
Ted	Director of Manufacturing
Will	Director of the Osprey Programme
Ian	Observer
Winston	Observer

Feedback Presentation Meeting to the EC (27th July 2007, Aberdeen Hills)

Adam	
Bradley	
Charlie	
Greg	
Joe	Director for Air Systems (new to DSI)
Mike	
Ted	
Will	
Ian	Presenter and observer
Winston	Presenter and observer

Others mentioned but not present

Jack	DSI International Director (responsible for DSI Australia)
Sam	Facilities Manager (reporting to the HR Director)

Final Follow-up E-mail

Adam	
Winston	

FIGURE 4. *Episode three*

pre-meditated. From this perspective, we saw that the three episodes represented an unfolding of a strategic 'decision' to build Building B, in a process that was at one and the same time political, negotiated, and contested, none of which can be explained without reference to the micro-discursive behaviours of those involved and the close understanding of the macro-context, the multi-layered history of the decision-making processes, and pressures within which they occurred.

Discussion

We started this article identifying two methodological challenges: a) the need to bridge discourse analysis across micro and macro-scales and contexts; and b) the need to embed such analyses within longitudinal ethnographies. The organizational discourse literature shows there is room for such an approach to produce more balanced explanations of the relative effects of agency and structures, and we proposed the integration of the Discourse-Historical Approach to CDA and ethnographic study as a means to this end.

In our commentary on the episodes we demonstrated how this integrated methodology enables different scales of reality to be brought together. Figure 5

provides a summary of these arguments and outcomes, and illustrates how a single proposition – whether or not to build Building B – at once drew upon discursive issues that varied in degrees of collective commitment and geographical scope. We showed how inter-discursivity provided the vehicle for local and global concerns to be simultaneously exercised. At the end of Episode 1 for example, the COO of DSI summarized the case for Building B by drawing upon issues ranging from micro-level interactional problems, meso-level organizational challenges, and macro-level labour market competition within the space of a few sentences. The approach demonstrated how discursive mechanisms and contextual factors influenced the development of the two decisions, and how these decisions were reached by the team using a variety of premises to support arguments that made particular claims (see Figure 5).

In the first episode, a single warrant was used to support Argument A, relating to the fact that the capital expenditure case for building was undermined by the 'bottom-up' projections from the business, and led to the conclusion that there was a need to run more scenarios to test the argument. Argument B to construct the new building, on the other hand, was supported by several warrants relating to trends in the workforce, health and safety considerations, improving recruitment and retention, and benefits to communication and coordination in the business. These warrants were used to support the case for the new building in a top-down fashion; this was finally the argument that won-out in the decision-making process. In the second episode, the continued argument to construct Building B was supported with warrants concerning the alternatives being unrealistic, uneconomic, or infeasible, as well as the divisive effect on the culture of the business. A second argument was created, however, to split the parts of the business across two sites, using the special needs of a particular group of employees and logistics to override the authority and mandate of the Group CEO. Compared to the first episode, therefore, the argument to go ahead with Building B lost-out in favour of splitting the site into two. By the third episode, however, the email conversation showed that the argument to build Building B had continued in the team, supported by warrants relating to the economic infeasibility of alternatives, and the divisive impact of splitting it across sites.

These shifts in thinking over approximately 12 months underline the emergent nature of the decision-making process and raise important issues regarding how arguments are influenced through organizational politics over time and power relations. For example, why and how did the successful arguments 'win out' in discursive terms in each episode? Inverting this question, which arguments were 'driven out' by the successful argument's claim to power, and how was this achieved? Were there discernable differences in the discursive strategies employed in successful arguments as opposed to unsuccessful arguments? To what extent was the effect of such discursive interactions mediated by the macro-context in which they were applied? Whereas it is not possible to answer these questions with reference to a few illustrative episodes, some initial insights have been provided by the methodology we proposed. The main impression of the decisions reached in Episodes 1 and 2 is that they appear to be examples of *situationally* negotiated logic. However, when viewed together within the context of additional information, in

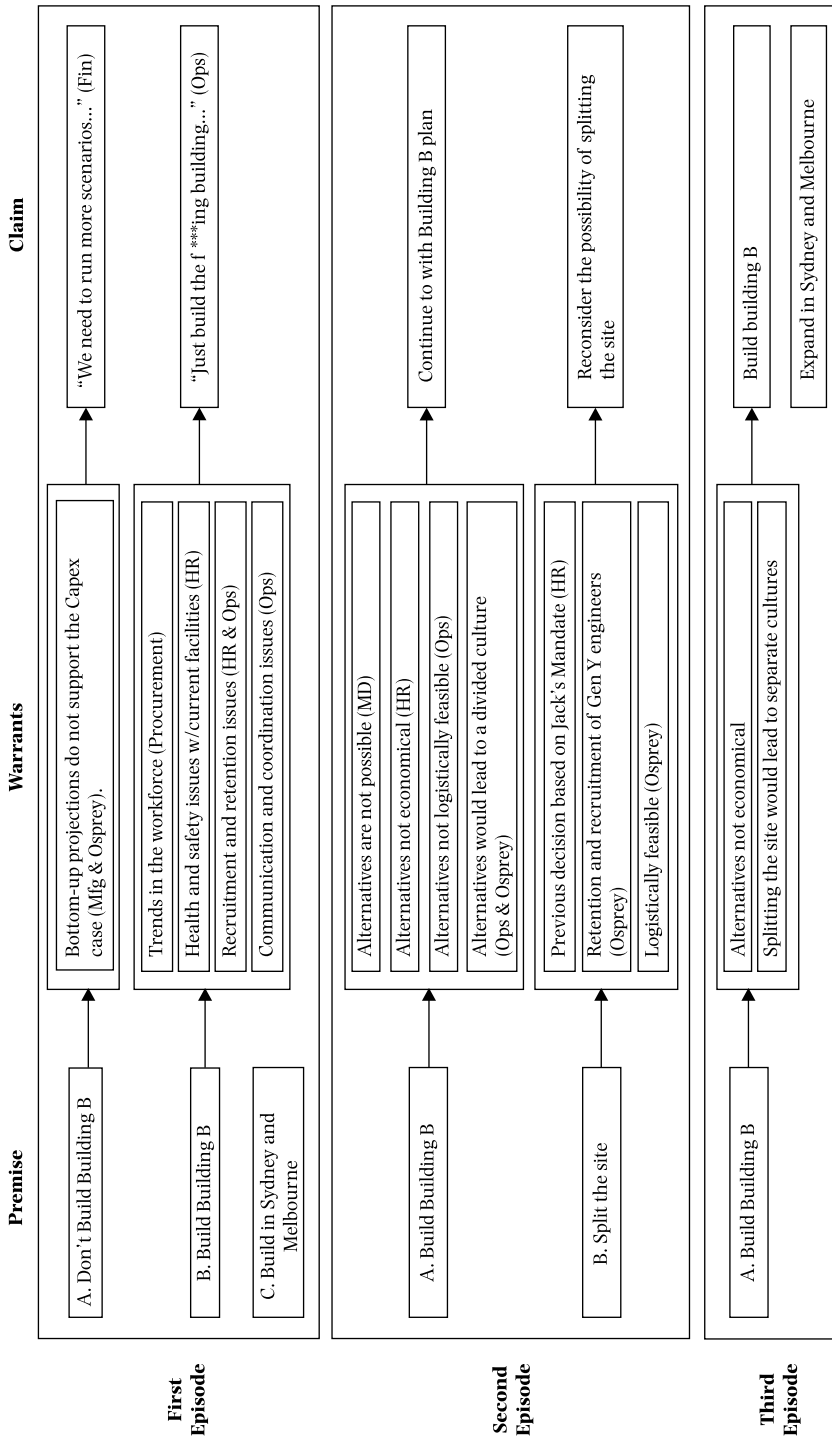


FIGURE 5. Summary of argumentation and outcomes
Source: Developed from Toulmin, 1958.

Episode 1 we see a decision orchestrated by MD Mike with the backing of Group CEO Jack; whereas Episode 2 is clearly an example of situationally negotiated logic advanced in resistance of the earlier decision. These decisions compare with the final outcome, revealed in Episode 3, by which time it had become evident that there was continued resistance from some members of the team to the decision to relocate certain functions to another site, and that the decision was reverting in favour of constructing Building B.

The methodology serves to illuminate the impact of different scales of influence and contexts on decision outcomes. At one extreme, we saw the effect macro-level structural influences had on the micro-level interactions between agents (such as the impact of labour market competition on recruitment). At the other extreme, we saw the way in which micro-level agents were able to act back on some of these influences through resourceful argumentation and negotiation. In between, we showed the impact of changing contexts on the outcomes of decision-making processes, whether in terms of new knowledge becoming available (e.g. the latent support of the Group CEO for the new building), or in terms of changes in the willingness and/or ability of individual actors (e.g. Will) to construct particular arguments in different circumstances. These insights suggest that power ought to be conceptualized as a duality of structure and process, with individuals being structurally 'empowered' or 'constrained' by their unique configuration of 'knowledges' that play out through processes of discursive interaction, in the way suggested above (see Holzschneider, 2005). While answers to these questions will only emerge from the analysis of extensive empirical data, what is clear is that structures of power are less dominant and agency is far more capricious than higher-level methodological approaches and theoretical frameworks might seem to suggest.

Seen from a further level of abstraction, our analysis of these three episodes also builds upon Cooren et al.'s (2007) conceptualization of Discourses⁶ as a form of *immutable mobiles* (Latour, 1987) that 'maintain its shape across time and space only if a lot of interactive work is done to assure the stability of its associations in the ordinary day-to-day activity of the people who embody it' (Cooren et al., 2007: 153). While this study focused on the work of the members and affiliates of an NGO in maintaining the integrity of its mission statement in its translations across several episodes within an ethnographic study, we extend this notion in several ways. First, the analysis of the three episodes in this article provides access to the actual interactive work of individuals through which the various translations of a nascent Discourse is maintained. Across the episodes, visibly powerful actors such as CEO Mike, COO Bradley – as well as unseen and unheard but extremely powerful actors such as group CEO Jack – invoke a range of discursive strategies (see Figure 1) to deal with multiple challenges from various actors in order to maintain the integrity of the Discourse of the new building. Second, our analytical approach also renders a real time perspective of interdiscursivity in which more established Discourses are appropriated as resources and with which to both contest and support the Discourse of the New Building. Although normally a powerful organizational Discourse, the IP for example is initially employed by Will and Ted, but is then quickly delimited and

discarded by Mike when it becomes clear that it will not serve its intended purpose in this situation. The Discourse of the Workforce in its various translations, is drawn upon to support the New Building by Greg (i.e. 'trends in the workforce') and Bradley (i.e. 'a huge challenge around the business in terms of retention'). In the second episode, the Workforce is unwittingly drawn upon by Joe (i.e. 'broad level of discontent') and is then seized upon by Adam (i.e. 'strong undercurrent of feeling') and Will (i.e. 'Generation Y') to challenge the plan to build the New Building. By the third episode the Workforce is invoked again (i.e. fears of creating 'separate cultures') as part of the justification for continuing with the New Building.⁷ Finally, this approach also builds conceptual linkages with Taylor and Robichaud's concept of organizational conversations as an activity that takes place between actors 'who become co-orientated to an object in conversations and thus create a basis for collective action' (2004: 398). In the case of this study, the (macro-) Discourse of the New Building can also be conceptualized as object around which the meeting participants co-orient through actions of contestation and negotiation over the course of three episodes to eventually reach a point where it is now possible to mobilize collective action to actually build the building.

The insights provided by the proposed approach are also important in informing management practice. As Cicourel (2007) reminded us, ecologically valid discourse analysis is aided by ethnography, since the latter helps us to accentuate the relative importance of variable and patterned physical and discursive actions. It also leads us to think carefully about how to *construct* validity – whether or not our data measures what we have undertaken to measure. The methodological integration that we have called for follows Cicourel's suggestion, but goes further. By keeping our theoretical constructs close to practice, we suggest that the approach offers the means for managers to identify the ingredients that create powerful arguments by comparing – as we have done in this article – those which 'win out' and those which 'lose out'. Potentially, this integrated approach offers researchers the scope to 'dimensionalize' power for managers at personal and interactive levels so they can be more aware of the discursive strategies or 'levers' they might deploy in practice to affect discussion. We are, of course, aware that the successful deployment of such strategies is partly dependent on status, roles, and hierarchical effects. Thus, the combination of the spontaneous interaction, the planned strategies, the arguments, and the static as well as negotiated intricate power relations determine losing or winning, as do idiosyncratic events such as the mood of the group on a particular day or the effect of a person with jetlag.

Three immediate priorities can be identified as a result of this discussion:

1. *The need to construct a substantive evidence base.* This can best be achieved by comparing the discursive practices used by managers across a larger number of episodes and over longer periods as part of an 'extended case' method (Burawoy, 1998). In practical terms this will require access to organizations to observe and record discussion and will involve comparison of issues being addressed by management teams within and across organizations and industry sectors.

2. *The need to explain the effects of different discursive strategies and contexts on decision-making outputs.* To avoid the criticism that the DHA simply describes what happens, associating patterns of discussion with certain outcomes that 'win the day', it will be important to look critically at the arguments and counter-arguments inherent in the process of discussions to tease out how, and why, certain arguments 'win' whilst others 'lose' as a result of individual and team-level skills, hierarchies, and organizational contexts; and to gauge the extent to which the context of the discussion facilitates and/or inhibits decision-making.
3. *The need to develop quantitative approaches to analyse large-scale linguistic corpora and integrate them with rich qualitative analyses.* The first two episodes in our article represented less than 10 minutes of conversation drawn from a dataset of nearly 300 hours of transcribed interviews and meetings captured over a two-year period. The ability to amass and digitize such huge amounts of data is encroaching upon the cognitive limitations of researchers to interpret such data using traditional qualitative methods. For example, analysis of high-*n* longitudinal datasets will require researchers to develop ways of objectively isolating issues for analysis, rather than selecting them subjectively. If the memories of research subjects are fallible and their interpretations biased, what about those of researchers? We suggest that memory and intuition need to be augmented with quantitative methods that go beyond inferring causal relations, and echo Baker et al. (2008) in proposing that critical discourse analysis methods such as the DHA can be made far more robust by incorporating methods and concepts from quantitative approaches, such as corpus linguistics (and vice versa). As Latour observed, the '... consequences for the social sciences will be enormous: they can finally have access to masses of data that are of the same order of magnitude as that of their older sisters, the natural sciences' (2007: 16–17).

Conclusion

The primary purpose of our article was to demonstrate the potential contribution of an integrated approach to critical discourse analysis that bridges macro- and micro-scales and contexts within a broader ethnographic study. Such an approach provides a sensitive and ecologically valid methodology for studying the discursive practices of managers in real time. Institutional and organizational structures are weaker and the actors that inhabit them more mundane, with the process of emergence being constantly created by, and arising from, ongoing interactions, much more so than the extant literature would suggest. This integrated methodology also allows us to build conceptual bridges with organizational discourse approaches that view language as a form of structural resource that is drawn upon by actors in the course of their discursive activities. By tackling the fundamental issue of how power is negotiated and exercised through discourse within and across scales and contexts, it is our belief that the approach we have outlined will ultimately make as important

a theoretical contribution to the field of organizational discourse studies as a methodological one.

ACKNOWLEDGEMENTS

We are grateful for the financial support of the UK ESRC/EPSRC Advanced Institute of Management Research (AIM) in the preparation of this article under grant number RES-331-25-0017 (Clarke), the Editor and three anonymous referees for their very constructive advice, as well as to Geoff Easton, Gerry Johnson, Andrew Sayer, Veronika Koller, and Gill Hopkinson for their thoughts, all of which were extremely helpful in the development of the article.

NOTES

1. Applying Habermas's definition of 'discourse' often neglects Habermas's theory of the 'ideal speech situation' and the related definition of 'discourse' which considers utopian contexts where no power relations would be evident, taking rational scholarly debates as an example (see, for example, Wodak, 1996, for a discussion of Foucault's and Habermas's influences on CDA).
2. A consistent theme through Foucault's work is the idea that belief systems gain momentum and therefore power through their normalization such that they become 'common knowledge' and that certain contradictory thoughts or acts can become 'abnormal' or 'impossible'. Because this form of power covertly works through individuals and has no particular locus, resistance to this power actually serves to define it and in itself is only possible through knowledge (Foucault, 1979; Foucault and Rabinow, 1984).
3. By 'strategy' we generally mean a more or less accurate and more or less intentional plan of practices (including discursive practices) adopted to achieve a particular social, political, psychological, or linguistic aim (Reisigl and Wodak, 2001). This definition relates, on the one hand, to the concept of habitus and internalized dispositions and practices in particular social fields; on the other, it relates to (Van Dijk and Kintsch, 1983) seminal theoretical approach to the forms of text comprehension and production where they introduced the concept of strategy into discourse studies as cognitive planning procedure.
4. A number of empirical studies (e.g. Heracleous and Barrett, 2001; Livesey, 2002; Simpson and Cheney, 2007) have used a rhetorical perspective (see Tompkins et al., 1989) to analyse organizational discourse and change through an integration of argumentation (i.e. topoi and rhetorical structures) and contextual linkages (i.e. intertextuality and interdiscursivity). While overlapping and complementary, the difference between the rhetorical approach and our approach is primarily one of emphasis. The DHA (and other CDA based approaches) begins with the supposition that language is a mechanism for the exercise of power and it thus conceptualizes notions such as argumentation, identity and interdiscursivity as means through which power is tacitly and latently expressed (Wodak, 2009). By contrast, the rhetorical perspective conceptually centres upon the notion that language is primarily a vehicle for persuasion and identification (Cheney et al., 2004), in which power is not a central dimension of analysis.
5. Readers should note that DSI is a pseudonym to protect the identity of our research sites and respondents. In addition, all the names of individuals, places, and projects in the organization have been altered for the same reason.

6. In this section, we adhere to the convention that discursive activities such as specific texts and utterances are referred to as 'discourses' whereas broader macro topics of discourse that span across levels of context are referred to as 'Discourses'.
7. The Discourse of the Workforce in itself is an interesting study in interdiscursivity. The tight employment market for skilled engineers in South Australia, for example, can be directly traced to mining companies struggling to meet orders for Chinese customers who in turn are engaged in the production of consumer products for export to developed markets. Within the space of several brief episodes, we see how global political-economic trends are spontaneously appropriated in multiple ways as resources employed in the discursive strategies of these actors.

REFERENCES

- Allison, G.T. and Zelikow, P. (1999) *Essence of Decision: Explaining the Cuban Missile Crisis*. London: Longman.
- Alvesson, M. and Kärreman, D. (2000) 'Varieties of Discourse: On the Study of Organizations through Discourse Analysis', *Human Relations* 53(9): 1125–49.
- Archer, M. (1982) 'Morphogenesis versus Structuration: On Combining Structure and Action', *The British Journal of Sociology* 33(4): 455–83.
- Archer, M. (1995) *Realist Social Theory: The Morphogenetic Approach*. Cambridge: Cambridge University Press.
- Baker, P., Gabrielatos, C., Khrosravinik, M., Krzyżanowski, M., Mcenery, T. and Wodak, R. (2008) 'A Useful Methodological Synergy? Combining Critical Discourse Analysis and Corpus Linguistics to Examine Discourses of Refugees and Asylum Seekers in the UK Press', *Discourse & Society* 19(3): 273–306.
- Barry, D. and Elmes, M. (1997) 'Strategy Retold: Toward a Narrative View of Strategic Discourse', *Academy of Management Review* 22(2): 429–52.
- Berger, P.L. and Luckmann, T. (1967) *The Social Construction of Reality*. New York: Doubleday Anchor.
- Boden, D. (1994) *The Business of Talk: Organizations in Action*. Cambridge: Polity Press.
- Bourdieu, P. (1984) *Distinction: A Social Critique of the Judgement of Taste*. London: Routledge & Kegan Paul.
- Bourdieu, P. and Thompson, J.B. (1991) *Language and Symbolic Power*. Cambridge: Polity, in association with Basil Blackwell.
- Brunsson, N. (1982) 'The Irrationality of Action and Action Rationality: Decision, Ideologies and Organizational Actions', *Journal of Management Studies* 19: 29–44.
- Brunsson, N. (1990) 'Deciding for Responsibility and Legitimation: Alternative Interpretations of Organizational "Decision-Making"', *Accounting, Organizations and Society* 15: 47–59.
- Burawoy, M. (1998) 'The Extended Case Method', *Sociological Theory* 16(1): 4–33.
- Cheney, G., Christensen, L.T., Conrad, C. and Lair, D.J. (2004) 'Corporate Rhetoric as Organizational Discourse', in D. Grant, C. Oswick and L.L. Putnam (eds) *The SAGE Handbook of Organizational Discourse*, pp. 79–103. London: Sage.
- Chia, R. (1994) 'The Concept of Decision: A Deconstructive Analysis', *Journal of Management Studies* 31(6): 781–806.
- Chilton, P. (2004) *Analysing Political Discourse. Theory and Practice*. London: Routledge.
- Cicourel, A.V. (1996) 'Ecological Validity and "White Room Effects": The Interaction of Cognitive and Cultural Models in the Pragmatic Analysis of Elicited Narratives from Children', *Pragmatics and Cognition* 4(2): 221–64.
- Cicourel, A.V. (2007) 'A Personal, Retrospective View of Ecological Validity', *Talk & Text* 27(5/6): 735–52.

- Cooren, F., Matte, F., Taylor, J.R. and Vasquez, C. (2007) 'A Humanitarian Organization in Action: Organizational Discourse as an Immutable Mobile', *Discourse & Communication* 1: 153–90.
- Deetz, S. (1982) 'Critical Interpretive Research in Organizational Communication', *Western Journal of Speech Communication* 46: 131–49.
- DiMaggio, P.J. and Powell, W.W. (1991) 'Introduction', in P.J. DiMaggio and W.W. Powell (eds) *The New Institutionalism in Organizational Analysis*, pp. 1–38. Chicago, IL: The University of Chicago Press.
- Fairclough, N. (2005) 'Discourse Analysis in Organization Studies: The Case for Critical Realism', *Organization Studies* 26(6): 915–39.
- Fairclough, N. and Wodak, R. (1997) 'Critical Discourse Analysis', in T.A. van Dijk (ed.) *Discourse as Social Interaction Discourse Studies: A Multidisciplinary Introduction*, pp. 258–84. London: Sage.
- Fairclough, N. and Wodak, R. (2008) 'The Bologna Process and the Knowledge-Based Economy', in B. Jessup, N. Fairclough and R. Wodak (eds) *Education and the Knowledge-Based Economy in Europe*, pp. 109–26. London: Falmer Press.
- Fairhurst, G.T., Cooren, F. and Cahill, D.J. (2002) 'Discursiveness, Contradiction, and Unintended Consequences in Successive Downsizings', *Management Communication Quarterly* 15(4): 501–40.
- Forester, J. (2003) 'On Fieldwork in a Habermasian Way: Critical Ethnography and the Extra-Ordinary Character of Professional Work', in M. Alvesson and H. Wilmott (eds) *Studying Management Critically*, pp. 46–65. London: Sage.
- Foucault, M. (1979) *Discipline and Punish: The Birth of the Prison*. Harmondsworth: Penguin.
- Foucault, M. and Rabinow, P. (1984) *The Foucault Reader*. New York: Pantheon Books.
- Garfinkel, H. (1967) *Studies in Ethnomethodology*. Englewood Cliffs, NJ: Prentice-Hall.
- Goffman, E. (1967) *Interaction Ritual: Essays on Face-to-Face Behaviour*. Harmondsworth: Penguin.
- Goffman, E. (1981) *Forms of Talk*. Philadelphia: University of Pennsylvania Press.
- Gramsci, A., Hoare, Q. and Smith, G.N. (eds) (1971) *Selections from the Prison Notebooks*. London: Lawrence & Wishart.
- Habermas, J. (1984/1987) *Theory of Communicative Action*, 2 volumes. Boston, MA: Beacon Press.
- Hendry, J. (2000) 'Strategic Decision Making, Discourse, and Strategy as Social Practice', *Journal of Management Studies* 37(7): 955–77.
- Hendry, J. and Seidl, D. (2003) 'The Structure and Significance of Strategic Episodes: Social Systems Theory and Routine Practices of Strategic Change', *Journal of Management Studies* 40(1): 175–96.
- Heracleous, L. (2006) 'A Tale of Three Discourses: The Dominant, the Strategic and the Marginalized', *Journal of Management Studies* 43(5): 1059–87.
- Heracleous, L. and Barrett, M. (2001) 'Organizational Change as Discourse: Communicative Actions and Deep Structures in the Context of Information Technology Implementation', *Academy of Management Journal* 44: 755–78.
- Hickson, D.J., Butler, R.J., Cray, D., Mallory, G.R. and Wilson, D.C. (1986) *Top Decisions: Strategic Decision-Making in Organizations*. Oxford: Blackwell.
- Holzscheiter, A. (2005) 'Power of Discourse and Power in Discourse. An Investigation of Transformation and Exclusion in the Global Discourse of Childhood', unpublished PhD thesis, FU Berlin.

- Iedema, R., Degeling, P., Braithwaite, J. and White, L. (2003) ‘“It’s an Interesting Conversation I’m Hearing”’: The Doctor as Manager’, *Organization Studies* 25(1): 15–33.
- Johnson, G., Melin, L. and Whittington, R. (2003) ‘Guest Editors’ Introduction: Micro Strategy and Strategizing: Towards an Activity-Based View’, *Journal of Management Studies* 40(1): 3–22.
- Kienpointner, R. (1992) *Alltagskognik. Struktur und Funktion von Argumentationsmustern*. Stuttgart-Bad Cannstatt: Frommann-Holzboog.
- Knights, D. and Morgan, G. (1995) ‘Strategy under the Microscope: Strategic Management and IT in Financial Services’, *Journal of Management Studies* 32(2): 191–214.
- Knorr-Cetina, K. (2007) ‘Global Markets as Global Conversations’, *Talk & Text* 27(5/6): 705–34.
- Laine, P.-M. and Vaara, E. (2007) ‘Struggling over Subjectivity: A Discursive Analysis of Strategic Development in an Engineering Group’, *Human Relations* 60(1): 29–58.
- Latour, B. (1987) *Science in Action: How to Follow Scientists and Engineers through Society*. Milton Keynes: Open University Press.
- Latour, B. (2007) ‘Click Era Spawns a Data-Rich World’, *Times Higher Education Supplement*, 7 April, Opinion.
- Latour, B. and Woolgar, S. (1986) *Laboratory Life*. Princeton, NJ: Princeton University Press.
- Lave, J. and Wenger, E. (1991) *Situated Learning: Legitimate Peripheral Participation*. Cambridge: Cambridge University Press.
- Livesey, S.M. (2002) ‘Global Warming Wars: Rhetorical and Discourse Analytic Approaches to ExxonMobil’s Corporate Public Discourse’, *Journal of Business Communication* 39: 117–48.
- Lukes, S. (2005) *Power: A Radical View*, 2nd edn. Basingstoke: Palgrave Macmillan.
- McPhee, R.D., Corman, S.R. and Iverson, J. (2007) ‘“We Ought to Have . . . Gumption . . .”’: A CRA Analysis of an Excerpt From the Videotape Corporation: After Mr. Sam’, in F. Cooren (ed.) *Interacting and Organizing: Analyses of a Management Meeting*, pp. 133–61. Mahwah, NJ: Lawrence Erlbaum.
- Maguire, S., Hardy, C. and Lawrence, T.B. (2004) ‘Institutional Entrepreneurship in Emerging Fields: HIV/AIDS Treatment Advocacy in Canada’, *Academy of Management Journal* 47(5): 657–79.
- Menz, F. (1999) ‘“Who am I Gonna Do this With?”: Self-Organization, Ambiguity and Decision-Making in a Business Enterprise’, *Discourse & Society* 10(1): 101–28.
- Mumby, D.K. (2004) ‘Discourse, Power and Ideology: Unpacking the Critical Approach’, in D. Grant, C. Hardy, C. Osrick and L.L. Putnam (eds) *The SAGE Handbook of Organizational Discourse*, pp. 237–57. London: Sage.
- Mumby, D.K. and Clair, R.P. (1997) ‘Organizational Discourse’, in T.A. van Dijk (ed.) *Discourse Studies, Volume 2: Discourse as Social Interaction*, pp. 181–205. London: Sage.
- Oberhuber, F. and Krzyzanowski, M. (2007) *(Un)Doing Europe: Discourses and Practices of Negotiating the EU Constitution*. Bern: Peter Lang AG.
- Oswick, C. and Richards, D. (2004) ‘Talk in Organizations: Local Conversations, Wider Perspectives’, *Culture and Organization* 10(2): 107–23.
- Pettigrew, A.M. (1973) *The Politics of Organizational Decision-Making*. London: Tavistock.
- Phillips, N., Lawrence, T.B. and Hardy, C. (2004) ‘Discourse and Institutions’, *Academy of Management Review* 29(4): 635–52.
- Polanyi, M. (1966) *The Tacit Dimension*. New York: Anchor Books.
- Potter, J. and Wetherell, M. (1987) *Discourse and Social Psychology: Beyond Attitudes and Behaviour*. London: Sage.

- Putnam, L.L. and Fairhurst, G.T. (2001) 'Discourse Analysis in Organizations: Issues and Concerns', in F.M. Jablin and L.L. Putnam (Eds) *The New Handbook of Organizational Communication: Advances in Theory, Research, and Methods*, pp. 78–136. Thousand Oaks, CA: Sage.
- Reed, M. (2000) 'The Limits of Discourse Analysis in Organizational Analysis', *Organization* 7(3): 524–30.
- Reisigl, M. and Wodak, R. (2001) *Discourse and Discrimination: Rhetorics of Racism and Antisemitism*. London: Routledge.
- Reisigl, M. and Wodak, R. (2009) 'The Discourse-Historical Approach', in R. Wodak and M. Meyer (eds) *Methods of CDA*, 2nd rev. edn, pp. 87–121. London: Sage.
- Sacks, H., Schegloff, E. and Jefferson, G. (1974) 'A Simplest Systematics for the Organization of Turn-Taking for Conversation', *Language* 50(4): 696–735.
- Samra-Fredericks, D. (2000) 'Doing "Boards-in-Action" Research – An Ethnographic Approach for the Capture and Analysis of Directors' and Senior Managers' Interactive Routines', *Corporate Governance* 8(3): 244–57.
- Samra-Fredericks, D. (2003) 'Strategizing as Lived Experience and Strategists' Everyday Efforts to Shape Strategic Direction', *Journal of Management Studies* 40(1): 141–74.
- Sanders, R.E. (2007) 'The Effect of Interactional Competence on Group Problem Solving', in F. Cooren (ed.) *Interacting and Organizing: Analyses of a Management Meeting*, pp. 163–83. Mahwah, NJ: Lawrence Erlbaum.
- Sarangi, S. (2007) 'The Anatomy of Interpretation: Coming to Terms with the Analyst's Paradox in Professional Discourse Studies', *Talk & Text* 27(5/6): 567–84.
- Schwartzman, H.B. (1987) 'The Significance of Meetings in an American Mental Health Center', *American Ethnologist* 14(2): 271–94.
- Schwartzman, H.B. (1989) *The Meeting: Gatherings in Organizations and Communities*. New York: Plenum Press.
- Simpson, M. and Cheney, G. (2007) 'Marketization, Participation, and Communication within New Zealand Retirement Villages: A Critical-Rhetorical and Discursive Analysis', *Discourse & Communication* 1: 191–222.
- Stohl, C. (2007) 'Bringing the Outside In: A Contextual Analysis', in F. Cooren (ed.) *Interacting and Organizing: Analyses of a Management Meeting*, pp. 185–98. Mahwah, NJ: Lawrence Erlbaum.
- Strauss, A. (1978) *Negotiations: Varieties, Contexts, Processes and Social Order*. London: Jossey-Bass.
- Taylor, J.R. and Robichaud, D. (2004) 'Finding the Organization in the Communication: Discourse as Action and Sensemaking', *Organization* 11: 395–413.
- Taylor, J.R. and Robichaud, D. (2007) 'Management as Metaconversation: The Search for Closure', in F. Cooren (ed.) *Interacting and Organizing: Analyses of a Management Meeting*, pp. 5–30. Mahwah, NJ: Lawrence Erlbaum.
- Tompkins, E.V.B., Tompkins, P.K. and Cheney, G. (1989) 'Organizations as Arguments: Discovering, Expressing, and Analysing the Premises for Decisions', *Journal of Management Systems* 1: 35–48.
- Toulmin, S.E. (1958) *The Uses of Argument*. Cambridge: Cambridge University Press.
- Van Dijk, T.A. (ed.) (1997) *Discourse as Structure and Process*. London: Sage.
- Van Dijk, T.A. (2008) *Discourse and Context: A Sociocognitive Approach*. Cambridge: Cambridge University Press.
- Van Dijk, T.A. and Kintsch, W. (1983) *Strategies of Discourse Comprehension*. New York: Academic Press.
- Weiss, G. and Wodak, R. (eds) (2003) *Critical Discourse Analysis: Theory and Interdisciplinarity*. New York: Palgrave Macmillan.

- Whittington, R. (2006) 'Completing the Practice Turn in Strategy Research', *Organization Studies* 25(7): 613–34.
- Wodak, R. (1996) *Disorders of Discourse*. London: Longman.
- Wodak, R. (2000a) 'From Conflict to Consensus? The Co-Construction of a Policy Paper', in P. Muntigl, G. Weiss and R. Wodak (eds) *European Union Discourses on Unemployment. An Interdisciplinary Approach to Employment Policy-Making and Organisational Change*, pp. 73–114. Amsterdam: John Benjamins.
- Wodak, R. (2000b) 'Recontextualization and the Transformation of Meanings: A Critical Discourse Analysis of Decision making in EU-Meetings about Employment Policies', in S. Sarangi and M. Coulthard (eds) *Discourse and Social Life*, pp. 185–206. Harlow: Pearson Education.
- Wodak, R. (2001) 'The Discourse-Historical Approach', in R. Wodak and M. Meyer (eds) *Methods of Critical Discourse Analysis*, pp. 63–94. London: Sage.
- Wodak, R. (2008) 'Introduction: Discourse Studies – Important Concepts and Terms', in R. Wodak and M. Krzyzanowski (eds) *Qualitative Discourse Analysis*, pp. 1–29. Basingstoke: Palgrave Macmillan.
- Wodak, R. (2009) *The Discursive Construction and Presentation of Politics in Action: Politics as Usual*. Basingstoke: Palgrave.
- Wodak, R. and Meyer, M. (2009) 'Critical Discourse Analysis: History, Agenda, Theory and Methodology', in R. Wodak and M. Meyer (eds) *Methods of Critical Discourse Analysis*, 2nd rev. edn, pp. 1–33. London: Sage.
- Wright, S. (ed.) (1994) *Anthropology of Organisations*. London: Routledge.



WINSTON KWON is a Research Associate in the Centre for Strategic Management at Lancaster University Management School. His research interests include the study of: decision-making processes within senior management teams and strategic change initiatives within pluralistic organizations. Prior to returning to academia, he worked in a number of finance and strategy positions with firms in the technology and consumer sectors. See [<http://www.lums.lancs.ac.uk/strategy/profiles/winston-kwon/>] for current research projects. ADDRESS: Research Fellow, Centre for Strategic Management, Lancaster University Management School, Lancaster LA1 4YX, UK. [email: wkwon@lancaster.ac.uk]

IAN CLARKE was appointed as Director at Newcastle in November 2008, where he is Chair in Strategic Management and Marketing. Prior to this he has held professorial positions in Lancaster, Sheffield, Durham, and Glasgow. Between 2004 and 2007 he was a Senior Fellow of the Advanced Institute of Management Research (AIM) initiative funded by ESRC and EPSRC, and he has had two other grants funded by the same research councils. He is a member (and currently Vice-President) of the Executive of the British Academy of Management, and a Fellow of the Chartered Institute of Marketing. Ian's research focuses on the sensemaking and discursive practices of senior management teams. His research has been published in a variety of social science, marketing and management journals, including *Journal of Management Studies*, *Human Relations*, *Environment & Planning A* and *European Journal of Marketing*. ADDRESS: Newcastle University Business School, Citywall, Citygate, Newcastle upon Tyne NE1 4JH, UK. [email: i.clarke@newcastle.ac.uk]

RUTH WODAK is Distinguished Professor of Discourse Studies at Lancaster University. Besides various other prizes, she was awarded the Wittgenstein Prize for Elite Researchers in 1996. Her research interests focus on discourse analysis, gender studies, language and/ or in politics, identity politics, prejudice and discrimination, and on ethnographic methods of linguistic field work. She is a member of the editorial board of a range of linguistic journals and co-editor of the journals *Discourse & Society*, *Critical Discourse Studies* and *Language and Politics*. She has held visiting professorships in Uppsala, Stanford University, University of Minnesota, University of East Anglia, Georgetown University and University Örebro. See [<http://www.ling.lancs.ac.uk/profiles/265/>] for current research projects. ADDRESS: Department of Linguistics and English Language, Lancaster University, Lancaster LA1 4YT, UK. [email: r.wodak@lancaster.ac.uk]