

Eastern Illinois University  
**The Keep**

---

Specimens by Name

Stover-Ebinger Herbarium

---

6-1997

*Acer saccharinum* L.

Cris Thomas

Follow this and additional works at: [http://thekeep.eiu.edu/herbarium\\_specimens\\_byname](http://thekeep.eiu.edu/herbarium_specimens_byname)



Part of the [Botany Commons](#)

---

#### Recommended Citation

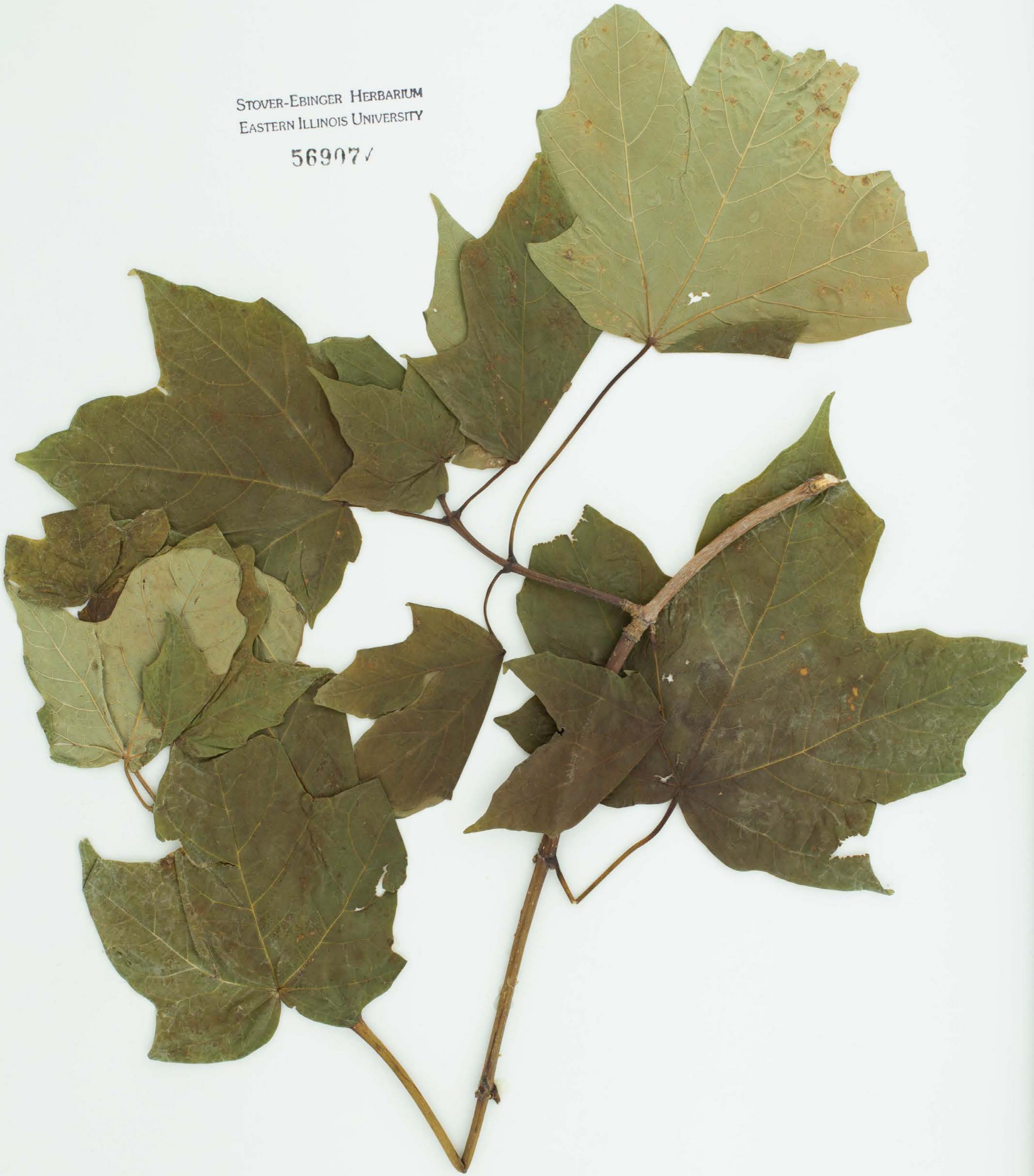
Sapindaceae, *Acer saccharinum*, L. USA, Illinois, Edgar, Twin Lakes park S30 T14N R11W, 39.637222, -87.688056, 1997-06-00, Thomas, Cris, 16, (EIU). Stover-Ebinger Herbarium, Eastern Illinois University. [http://thekeep.eiu.edu/herbarium\\_specimens\\_byname/20601](http://thekeep.eiu.edu/herbarium_specimens_byname/20601)

This Specimen is brought to you for free and open access by the Stover-Ebinger Herbarium at The Keep. It has been accepted for inclusion in Specimens by Name by an authorized administrator of The Keep. For more information, please contact [tabruns@eiu.edu](mailto:tabruns@eiu.edu).



STOVER-EBINGER HERBARIUM  
EASTERN ILLINOIS UNIVERSITY

56907 ✓



Plants of Edgar County, Illinois, U.S.A.

*Acer saccharum* Marsh.

ver. Gordon C. Tucker Family: Aceraceae

Paris: Twin Lakes Park. S30 T14N R11W 39°38'14"N 87°41'17"

Habitat: On beach.

Notes: Tree 50 ft. tall.

June 1997 Cris Thomas 16

Stover-Ebinger Herbarium (EIU) Eastern Illinois University