

7-13-1998

Bumelia lanuginosa Pers.

David S. Seigler

John E. Ebinger

Eastern Illinois University, jeebinger@eiu.edu

Follow this and additional works at: http://thekeep.eiu.edu/herbarium_specimens_byname



Part of the [Botany Commons](#)

Recommended Citation

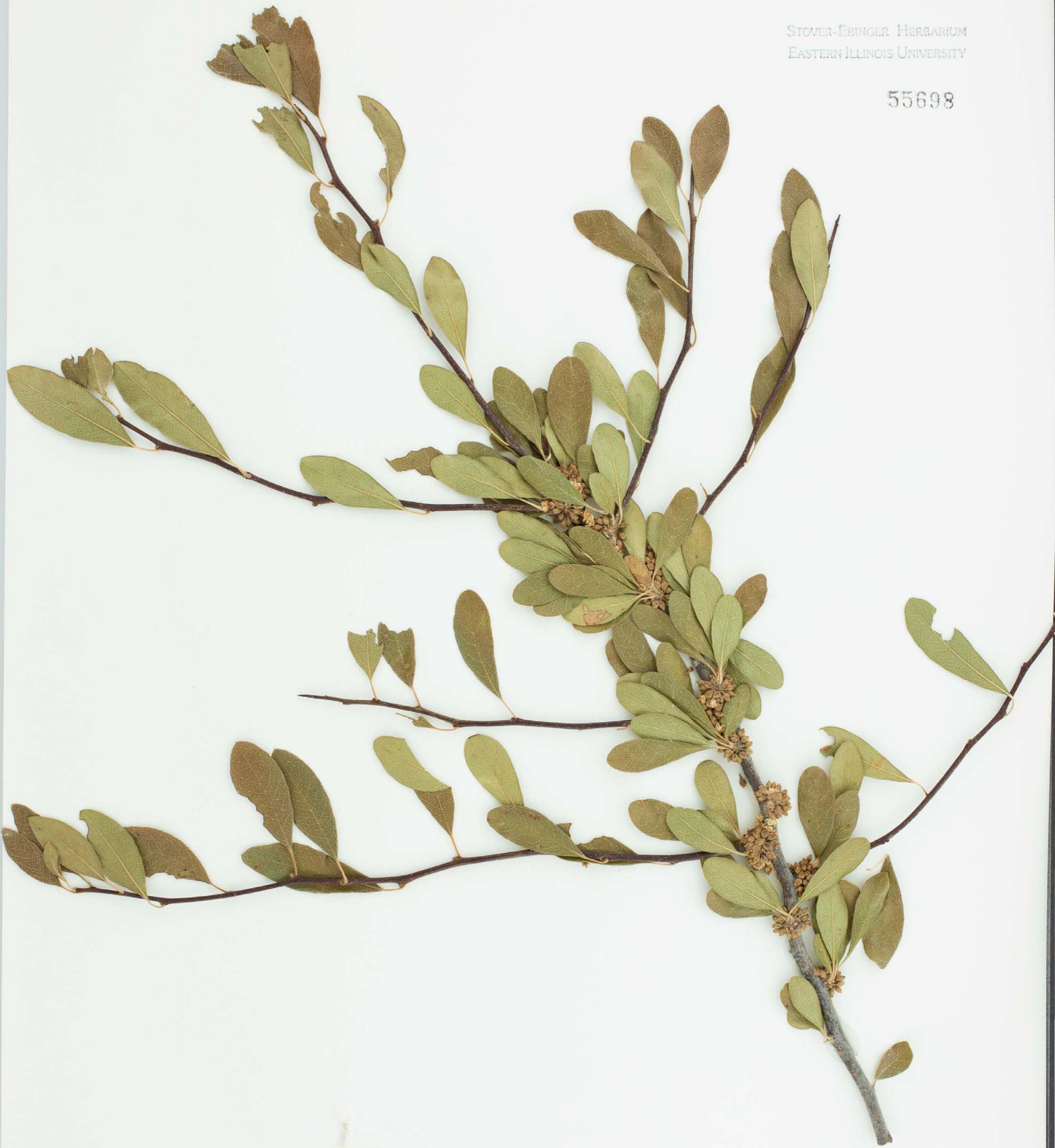
Sapotaceae, *Bumelia lanuginosa*, Pers. USA, Texas, McCulloch, Edge of rt. 190, 7 miles SW of Brady, Texas. Tree 5 m tall., 1998-07-13, Seigler, David S., 14419, (EIU). Stover-Ebinger Herbarium, Eastern Illinois University. http://thekeep.eiu.edu/herbarium_specimens_byname/20482

This Specimen is brought to you for free and open access by the Stover-Ebinger Herbarium at The Keep. It has been accepted for inclusion in Specimens by Name by an authorized administrator of The Keep. For more information, please contact tabruns@eiu.edu.



STOVER-EBINGER HERBARIUM
EASTERN ILLINOIS UNIVERSITY

55698



HERBARIUM - DEPARTMENT OF PLANT BIOLOGY
UNIVERSITY OF ILLINOIS AT URBANA-CHAMPAIGN

Plants of: McCulloch Co., TEXAS

Bumelia lanuginosa (Michx.) Pers.

Edge of rt. 190, 7 miles SW of Brady, Texas.
Tree 5 m tall.

SAPOTACEAE

David S. Seigler and John E. Ebinger 14419
13 July 1998