

7-31-1980

Daily Eastern News: July 31, 1980

Eastern Illinois University

Follow this and additional works at: http://thekeep.eiu.edu/den_1980_jul

Recommended Citation

Eastern Illinois University, "Daily Eastern News: July 31, 1980" (1980). *July*. 10.
http://thekeep.eiu.edu/den_1980_jul/10

This is brought to you for free and open access by the 1980 at The Keep. It has been accepted for inclusion in July by an authorized administrator of The Keep. For more information, please contact tabruns@eiu.edu.

ICTC to offer free student directories

by Marsha Hausser

Free student directories will be available to students this fall through the joint efforts of the University Relations Office and the Illinois Consolidated Telephone Company.

ICTC agreed to print the directories from student data and other university information provided by university relations, Ken Hesler, director of university relations, said Tuesday.

The directories will include names, addresses and phone numbers of both students and faculty, plus a listing of campus services and organizations with phone numbers, Hesler said.

Julie Harper of the public relations office of ICTC, said the directory will be available sometime in October, although she could not give a specific date.

"We're really delighted that we can provide this service," Harper said.

Hesler said the university has had a number of problems with publishing the directories in the past, including late deliveries, high costs and complications caused by the Privacy Act. No directory was printed last year.

In addition, there is no university money available to pay for printing the directory, which means either ad-

vertising had to be sold to cover costs or a price had to be charged for each directory, Hesler said.

ICTC will be selling ads for the directory to cover printing costs. R.R. Donnelly's of Mattoon will publish the directory.

To comply with the Privacy Act, students will have two weeks at the beginning of the semester to remove their names and phone numbers from the directory, Hesler said.

He said he is confident the new arrangement will work out since it is in the mutual interest of both the phone company and the university.

Eastern News

Thursday, July 31, 1980/ Charleston, Ill./Vol. 65, No. 158/12 Pages



Tony winner 'Company' starts here Saturday

by Herb Meeker

"Company," an award-winning play which depicts marriage through the eyes of a swinging bachelor, will be presented by Eastern's Summer Theater Company at 8 p.m. Saturday through Tuesday in the theater of the Doudna Fine Arts Center.

"Company," with its songs by Stephen Sondheim and book by George Furth, won the Tony Award and the New York Drama Critics Circle as Best Musical of 1970.

The play begins with the 35th birthday party for the main character, "Bobby-the-bachelor" played by freshman Ralph Easter. Bobby is blessed with married couples for friends and at the party asks the question "should I get married?" From there the play centers around Bobby's married friends' presentations of married life.

The couples are all different. Some can cope with marriage, while others merely live together.

One couple, played by freshman Ann Pinnell and Scott Zimmerman has been divorced so they can live together more freely. Junior Beth Adams and sophomore John Satterfield are live-ins who become newlyweds after overcoming some hangups on marriage.

Junior Kris Salamone and senior Barry Roberts portray a couple with an inactive marriage.

Jeri Hughes and graduate student Michael Shehorn play a couple where the wife diets and the husband tries to give up alcohol, and Joe Sain and Lisa Mammoser play a couple trying to deal with marriage with the aid of marijuana.

Through Sondheim's songs, the couples tell Bobby what is good and bad about marriage. "Sorry-Grateful" and "Poor Baby" inform and console Bobby about his singular status.

Bobby has three girlfriends who help him to avoid a final commitment. Amy Filter, senior Cindy Mauer and freshman Cindy Urbaniak portray the ladies who show their collective frustration with Bobby's dating game by singing in trio "You Could Drive a Person Crazy."

(See 'COMPANY' page 5)

Cast members of "Company" do the two-step while rehearsing Wednesday night. The Tony award winning musical comedy will be presented at 8 p.m. Saturday

through Tuesday in Doudna Fine Arts Center theater. (News photo by Robin Scholz)

Salary increases still to be determined

by Marsha Hausser

Even after Gov. James Thompson's reduction of salary increases for university employees to 7.6 percent, salaries of faculty and civil service workers will not all reflect that amount, a university representative to the legislature said.

Richard Dulka, legislative director for the American Federation of Teachers local 3500, representing the Board of Governors schools, said the 7.6 percent increase approved by the governor will not be distributed "across the board" among all faculty members.

Negotiations by the AFT with the Board of Governors will determine how the increase is distributed among faculty based on tenure and education level.

"People at the top get a higher percentage increase," Dulka said.

He said the AFT will work for "whatever the faculty tells us to do" in distributing the increase.

"In our system, we think we have a pretty equitable formula for distribution," Dulka said.

He said he anticipates the fall

contract will include a fixed increase for all faculty plus a percentage increase based on each member's current salary.

He would not estimate what the fixed increase might be.

Dulka said the distribution of the increase is handled more fairly in the BOG system than in the other university systems in Illinois. Some teachers' unions negotiate directly with the administration of their university, thus giving administrators a larger say in how the increase will be distributed than the union.

However, through collective bargaining with the BOG, instructors at each of the five universities in the system have a better chance of receiving increases which are not as biased by the administration, Dulka said.

The other group of university employees who will be receiving increases this year are civil service workers.

Gaye Snyder, president of the Civil Service Council at Eastern, said civil service employees will be getting an 8 percent increase, greater than most

faculty members.

Snyder said the 8 percent increase illustrates "an administrative attitude change toward civil service" after Eastern President Daniel E. Marvin and Vice President for Administration and Finance George Miller reallocated university funds to up the governor's salary provision.

In addition to the 8 percent, some lower classifications within the civil service system will be receiving more money. That group includes workers whose salaries would have fallen below minimum wage in January, Snyder said.

She said even though she is encouraged by the administration's attention to the salaries of civil service employees, "we have a real salary problem here and it still exists.

"Our people fall so far below what other university's civil service employees get," Snyder said.

The addition of university money to up the increase will help alleviate the gap between what workers at Eastern get paid in relation to civil service salaries at other schools, Snyder said.



Shade for a change

New umbrellas liven up the patio at the Union food service. The Union has consolidated its food service for the summer and all services are located in the Panther Lair. (News photo by Bob Kasinecz)

Fuel group tries to generate public interest in movement

by Vicki Shaw

A state wide search is on to find interested people to get involved with the Illinois alcohol fuel movement.

Don Handy, president of the Illinois Alcohol Fuel Association, visited Charleston recently to explain the movement and possibly raise enough interest to organize a Charleston-Mattoon or Eastern Central Illinois chapter.

Handy said the organization was established in May of this year and is still in the "coffee-cup" stage.

"We're drinking a lot of coffee and talking a lot. But it's time to take some action," he said.

Handy added that some action has already taken place. Plans are currently underway in Illinois for 36 alcohol fuel plants that could produce 175 million gallons a year.

Several projects are planned for this area, he said. Douglas, Effingham and Coles counties have been mentioned as possible plant sites.

Handy said since the IAFA is a fairly new in-

dustry people have to pool and exchange their information, working together to answer technical and economic questions.

"One group could work for months to get the same answer to a question that another group has known all along," he said.

"We want them to help each other out and not worry about competition among themselves," Handy said.

"America is importing \$70 billion worth of foreign oil a year. That's the competition I'm worried about."

Handy also said he IAFA is taking both fall and spring semester applications from college seniors or graduate students who wish to work with the association in Springfield. Applicants should be working toward a degree in agriculture, chemistry or public administration, he said.

"I can almost guarantee anyone taking up this offer a future job," he said.

Interested persons should contact the IAFA, 3417 S. Second St., Springfield, Ill. 62703.

Weather

Thursday will be partly cloudy and very warm with a chance of thunderstorms. The high will be near 90, with lows in the mid 60s.
Friday will be partly sunny and warm with highs in the upper 80s. The weekend will be fair with the high reaching 80 and the lows in the 60s.

Summer Graduation Announcements




are now available at



the Union Bookstore
MARTIN LUTHER KING, JR.
UNIVERSITY UNION

Beautiful Hair
from
Valerie's Hair Affair
open Mon-Sat
across from Wilb Walker
Shopping Center



Futures... Army ROTC can help you take some shape. With leadership and management credentials actively sought by employers of college grads. And with additional career opportunities as an Army officer, full time on active duty or part time in reserve while employed in the civilian community.

Start putting your future into shape. Find out more about the Army ROTC 2-year program. See Captain Kantor, 101-A Applied Arts

Things are shaping up.

- News Staff**
- Editor in Chief Brad Patterson
 - News editor Linda Charnesky
 - Managing editor Marsha Hausser
 - Campus/Administration editor Laura Rzepka
 - Government editor Herb Meeker
 - City editor Jerry Fallstrom
 - Sports editor Vickie Woodbury
 - Photo editor Bob Kasinecz
 - Advertising manager Julie Hatfield
 - Circulation manager Scott Moyer
 - Business manager Tony Dardano
 - Adviser Daniel Thornburgh

Identification Statement

The Eastern News is published daily, Monday through Friday, at Charleston, Ill. during the fall and spring semesters and twice weekly during the summer term, except during school vacations or examinations by the students of Eastern Illinois University. Subscription price \$5 per semester, \$1 for summer only, \$10 for all year. The Eastern News is a member of the Associated Press, which is entitled to exclusive use of all articles appearing in this paper. The opinions expressed on the editorial and op ed pages are not necessarily those of the administration, faculty or student body. Phone 581-2812. Advertising phone 581-2813. The Eastern News editorial and business offices are located in the East Wing of the Student Services Building, Eastern Illinois University. Second class postage paid at Charleston, Ill. Publication number (USPS 002-250). Postmaster: Send address changes to Eastern News, Eastern Illinois University, Charleston, Ill. 61920. Printed by Eastern Illinois University, Charleston, Ill. 61920.

Photographs bring county history to life at fair

by Jerry Fallstrom

Children get so excited while visiting the Coles County Sesquicentennial Mobile Archives exhibit located at the fair this week, that they hurry out and pull mom and dad in for a look.

What is it that the little ones are so excited about?

Photographs, photographs and more photographs, said Nancy Shick of Charleston, who is responsible for the mobile display of photographs of Coles County history. The display is housed in a trailer loaned by Trailmobile to Shick and a group of "amateur historians."

"The children who have come in have been real interested in the photographs, especially the barn display," said Shick.

Shick and a group of friends have worked since February to put the display together. "We got a person from each township (in Coles County)

to collect old photos and bring them to my house to reproduce," she said.

There are 22 different displays in the exhibit, including one for each of the 12 townships in the county. There are special exhibits on Abraham Lincoln and the Paul Sargeant family also.

The mobile display is located behind the grandstand and will remain there throughout the fair, which ends Saturday. After that, the display will travel to various areas before ending its stay in the trailer on Sept. 21.

The display was first opened in April for Eastern's "Celebration '80" Art Festival," Shick said. At that time, the display was still in its infancy.

"We didn't have as much as we do now. We worked day and night to get it ready for 'Celebration.' We're still adding things every day to the display," Shick said.

Shick said people come in and see the display and later come in with more

old photos for Shick to reproduce.

Shick said her home on East Harrison Avenue Road was literally filled with historical items during the time a majority of the work was done.

"My home sort of turned into a history factory," she laughed. "Some days I went to bed at 2:30 (a.m.) and got up at 5:30 (a.m.). So there was a lot of work involved."

Shick became interested in history and old photographs when she learned she was named after two great-grandmothers. "I think that must have been what helped get me interested in it. Plus I remember hearing my grandfather tell stories of the old days."

Those who have been instrumental in helping Shick with putting the display together include Merna Combs of Charleston, Rose Talbott of Hutton Township and Karen Beals of Mattoon.

Besides the large photograph exhibit, Shick has acquired Indian arrowheads and other artifacts from old Bachelorsville, which is located south of Ashmore. Also on display is a mastodon tooth which "must be thousands of years old," Shick said.

An antique switchboard and telephone are also crowd-pleasers for children, she said.

When the Sesquicentennial celebration ends, Shick will have to dismantle the display. For now, she is unsure what will happen to it.

"We may put the photos in libraries of the townships if there is any interest," she said. "We want to get the pictures in a permanent photo file so someone who wants to look up an ancestor or something won't have to search around," Shick said.

"I want the photographs to be accessible."



TERRY'S HAIRSTYLING

Barber/Stylists
Terry or Angela
345-6325

1/2 blk, North of square on 7th

The Golden Comb

For Guys & Gals
1214 Third St. *Debbie Jones*
345-7530
Just 1 Block North of Lincoln

Pagliai's

PIZZA

Break Away for real Italian pizza

Phone: **345-3400**
1600 E. Lincoln
Behind Bob Hickman Ford

Coles County Fair

THURSDAY, JULY 31
2 p.m. - Harness Racing
7:30 p.m. - Sesquicentennial Pageant

FRIDAY, AUGUST 1
2 p.m. - Harness Racing
6:30 p.m. - Class A Tractor Pulling Contest

SATURDAY, AUGUST 2 7:30 p.m. - Demolition Derby



Monday thru Saturday "Specials"



This card is worth one free drink after purchasing first one at Sporty's


345-9092 727 7th St.


Expires August 1, 1980 Clerk Initial _____

6 pm till closes

1.75 pitchers

75¢ mixed drinks





Gate Way LIQUORS

\$1 off your favorite case of beer

Sale items not included

coupon good through Aug. 3

Editorials

'Billy-Gate' hurting president . . .

All the recent information that has come out concerning Billy Carter's involvement with the government of the African nation of Libya has put President Carter in an awkward situation.

Carter was facing a tough re-election campaign from Republican nominee Ronald Reagan before the recent events were made public.

Now Carter faces a fight in his own party in the upcoming convention. And it is unfortunate that events related to Carter, through no fault of his own, may cost him either the election, or even the Democratic nomination.

Billy reportedly received a \$220,000 loan from the Libyan government, and was forced to register as a foreign agent of the African nation. Attorney General Benjamin

Civiletti has said that the Justice Department will not prosecute Billy even if it is revealed that he lied to the FBI about the loan.

The old saying 'you can choose your friends, but you can't choose your family' must ring very clear to the president as he sweats out the Senate investigation.

Other presidents have had 'problem' brothers. A recent chief executive reportedly had his brother 'bottled up,' literally, in bourbon to keep him out of trouble.

'Billy-Gate' by itself seems not to be too dangerous. What is frightening is that the president may have had something to do with trying to cover up any wrongdoings by his brother. The same type of cover up forced a past president out of office.

The Republicans are preying on the situation, as are the remaining hopefuls of the Kennedy forces, that see a new opportunity to wrest the nomination away from Carter.

Politically the situation is grave for Carter. What is sad is that the president may have been completely innocent in the entire situation. The American people must remember that they are electing a man to be their elected leader, not his brother.

President Carter should not be punished by the deeds of his younger brother who has been a thorn in his side for years.

At the upcoming Democratic convention, and later in the general election, hopefully the voters will see that a candidate should not be judged on the merits of his family.

. . . poll says Carter at lowest point in history

The latest NBC-Lou Harris poll shows that President Carter has set a record.

A record for having the lowest popularity of any U.S. President in history, a record he is definitely not proud of.

The poll shows that 77 percent of the people surveyed do not think Carter is doing a commendable job as our chief executive.

However this is not foreign to our leaders. Gerald Ford never stood out as far as popularity polls were concerned. The majority of people surveyed back in 1975 thought Ford was basically incompetent for the job, and they voted him out of office.

In 1980, people evidently feel the same way about Carter. And if the polls are accurate, the American people may vote him out of the White House in November.

Harry Truman was never near the top of the popularity polls when he was in office. The question is, can one man make the American people happy? Each man who takes the job as president thinks that he can lead the country in the direction that the citizens want it.

With the country in its present state, it is apparent that Carter is overwhelmed by the responsibilities of his job. But can Ronald Reagan do any better? Or John Anderson? Or any other man?

Carter has had his share of problems in his administration. The economy, the situation in Iran and our relations with the Russians, are just a few. The poll indicates how little faith the American people have in their chief executive. That is not healthy for a country.

But is it Carter, or is it the awesome responsibilities of the job that makes the voters think that the president is incompetent.

The job of the presidency may need

some revamping. The complicated world situation, and the state of the American economy are only part of the awesome responsibilities of the job as leader of the Western world.

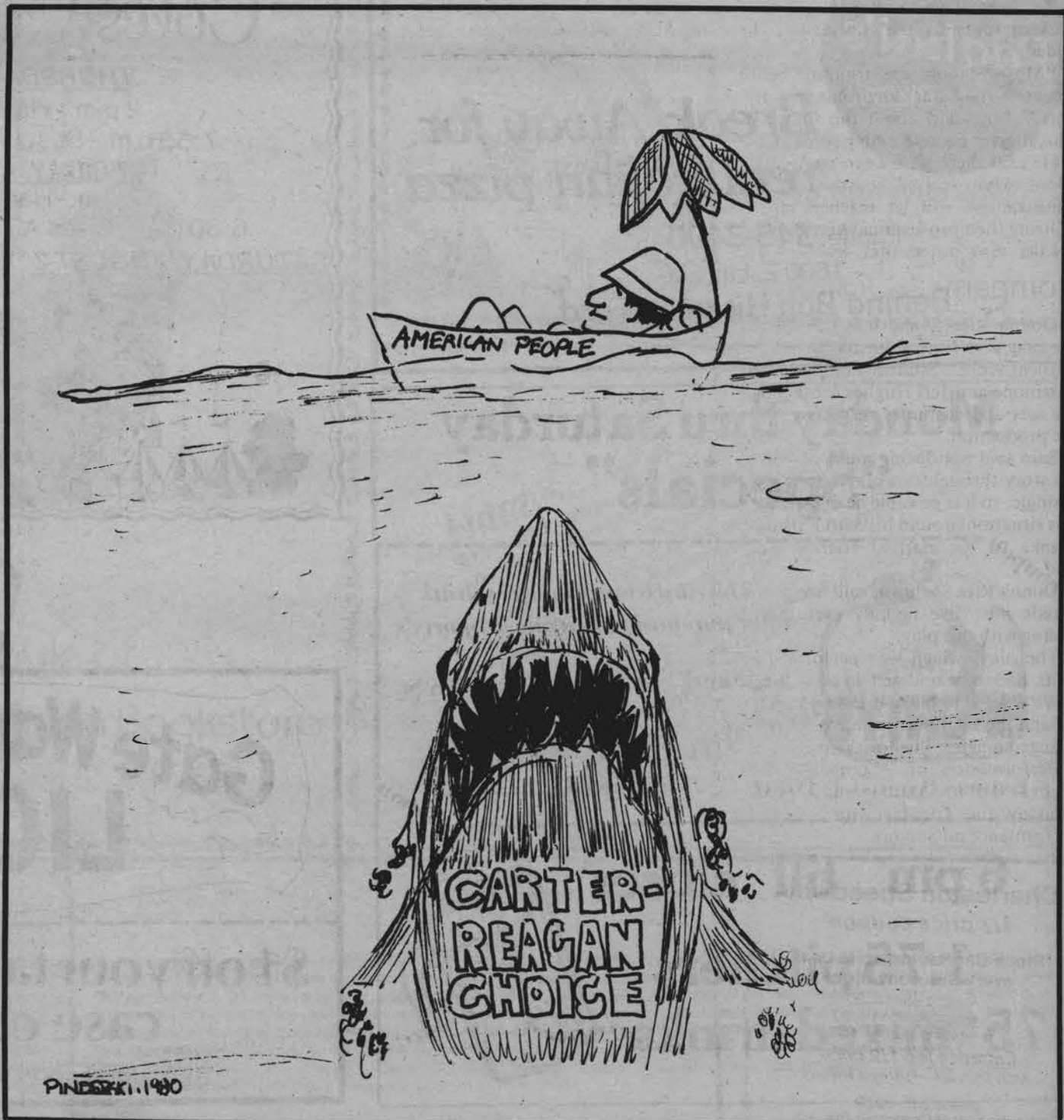
Political scientists have advocated changes in the position, such as

making it a two-man job, limiting it to a one term job of six years, and other possibilities that would make being president a workable position.

If there are not some changes made, then the American people can look forward to years upon years of being

upset with the president. And it may be a long time before a man comes along that will please a majority of the American populous.

And, unless changes are made, the president may never get a better rating than Carter is getting at the moment.



Letter policy

All letters to the editor must carry the name, address and telephone number of their authors for identification purposes.

Dean seeks to help faculty solve problems

by Linda Charnesky

The new dean of the School of Education Frank Lutz conceives his deanship as one of helping his faculty members solve problems.

"If the faculty have a concern, I will help try to manage the resources and put them into some configuration," the former Penn State professor said.

Lutz assumed his responsibilities as education dean July 1, replacing Harry Merigis.

At Penn State Lutz's area was politics of education and school administration.

When asked if it will be a big transition being a dean as opposed to just a professor, Lutz said his thoughts have always been geared toward organizational problems and how they could be solved.

Lutz completed his undergraduate, graduate and doctoral work at Washington University in St. Louis.

Already in the School of Education, the offices of pre-clinical and clinical work have merged to better utilize scarce resources in managing affairs, Lutz said.

Pre-clinical experience refers to giving students an image of what it is like working with children. After education courses are completed, the student does his clinical work or student teaching, Lutz said.

He also said he would like to expand the scope of Eastern's educational journal, published each semester by the School of Education.

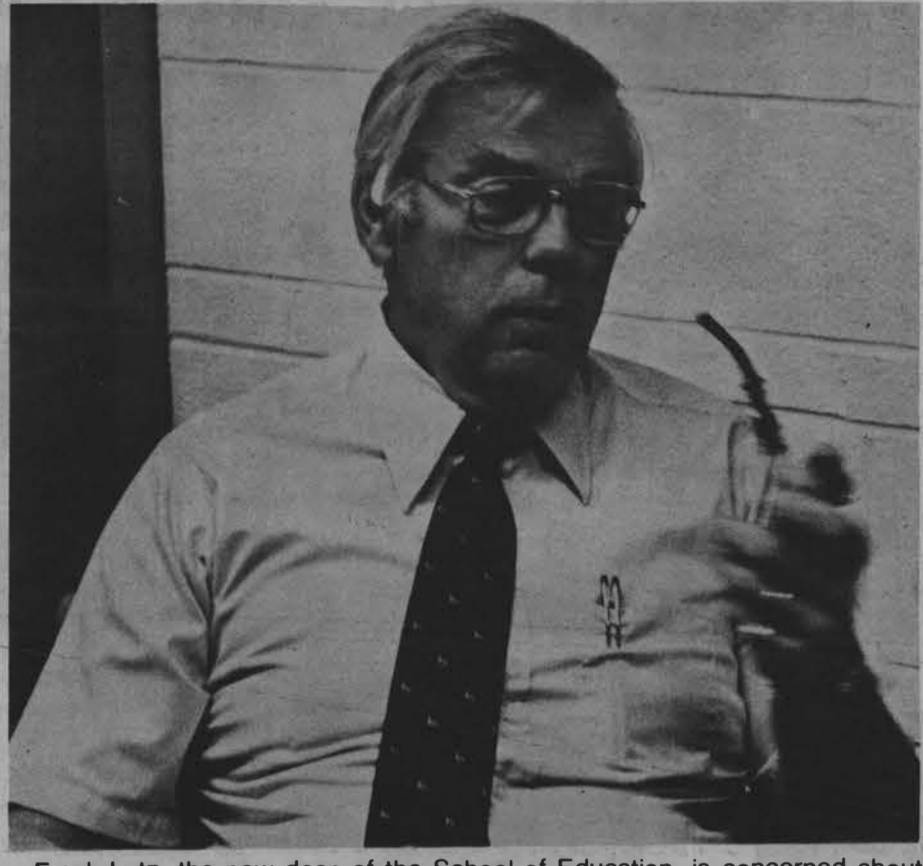
"We would like to expand our readership and make education, a university wide concern," Lutz stated.

The journal has to carry the image of Eastern outside the university, he added.

"Most schools are training better teachers than the environment permits," Lutz said about the future of education at Eastern and in general.

He said there have been restrictions about what school boards and administrations will let teachers do in utilizing their professional knowhow.

Lutz also noted that teachers are



Frank Lutz, the new dean of the School of Education, is concerned about faculty problems. Lutz assumed his responsibilities as education dean July 1. (News photo Linda Charnesky.)

able to do things today that they are not qualified to do, such as identifying learning disabilities.

In five to 10 years, Lutz foresees a drastic shortage of teachers. According to the state of Illinois and Eastern data, there will be a critical shortage, Lutz said.

He noted that there is no active candidate seeking a teaching position in Eastern's education office for which they (education department) can send

to a school.

Lutz is currently living out of his Winnago with his wife Susan. They have three children, ages 17, 23, and 27. Lutz also owns four appaloosa horses which will arrive in Charleston Wednesday, he said.

Lutz has also done some football coaching but when asked if he would like to try his hand at it at Eastern, Lutz said "they've got their job, I've got mine."

MEET THE OWNERS AND MANAGER OF Roc's Lounge

CHARLESTON, III.



Jerry Nikitas owner

EIU educated
Ex-school teacher
Married to Karen Gregarious



John Ward owner

EIU over-educated
Single, not looking
Ex-school teacher
Ex-school principal



Art Lauderback

Manager
EIU Educated
Single, not looking
Best pool player
Shaved his beard

Summer Evening '80
Books Are Free

"CAMPUS CRAZY"

DAY

1-2
ICE CREAM SOCIAL
AND
MUSIC

2-4
GAMES:
WIFFLEBALL
VOLLEYBALL
HUMAN WHEELBARREL
HUMAN PYRAMID
TRICYCLE RACE
SUN TAN CONTEST
BEST & WORST

4-6
PICNIC
(BRING OWN FOOD)

6-8
"SCREAMS"
ROCK BAND

AUG 1

1-8 PM

LIBRARY QUAD

Charleston Speedway
1/2 price coupon

Stock Car Racing at its best every Saturday night

- gates open 5:30
- qualifications 6:30
- racing starts 7:45

Entrance fee 1/2 price with this ad—bring a friend

phone 345-2929
3 miles east of Charleston-Rte. 16

Hot dog! The fair's really cookin' now

Harness races, hot dogs, and hot weather dominated the activity at the Coles County Fair Wednesday. The fair began Sunday as it usually does—wet. But since that dank beginning the sun has shone on the 127th county fair.

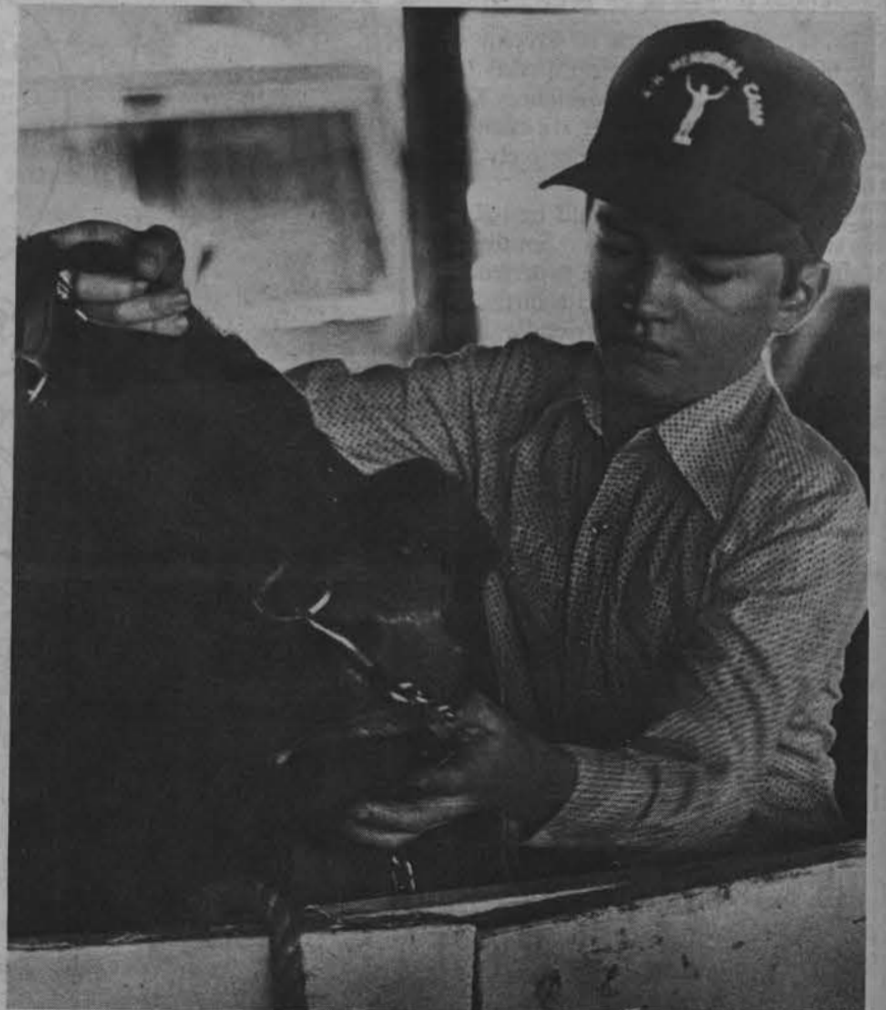
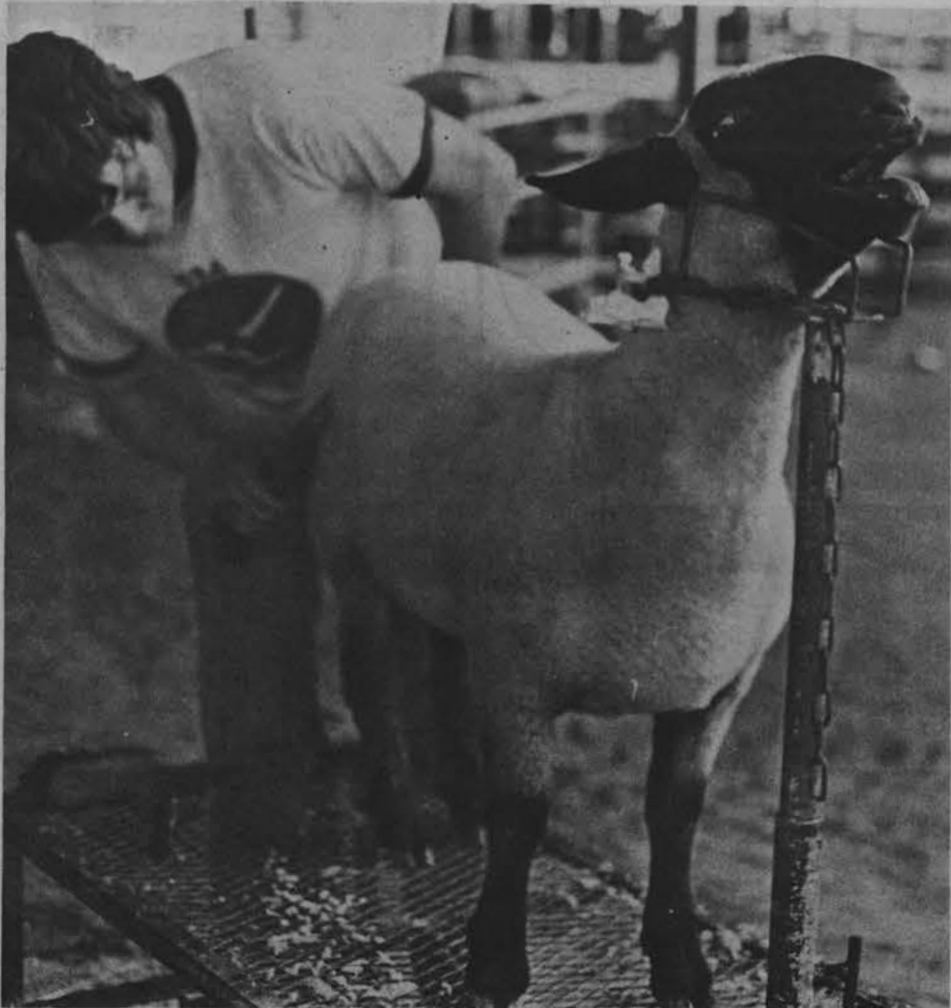
Thursday's activities include the long-awaited Coles County Sesquicentennial Pageant, at 7:30 p.m.

At right, 2-year-old trotters race Wednesday afternoon. At middle left, Pat Richard and John Luehrs try their hand at ski-bowl. At center, cooks Bill Hardgrove and Joe Brown feed hungry customers. At middle right, Eric Hall loses his breath on the giant slide. At lower left, Mike Gillespie handles his bull.



News photos

by Bob Kasinecz



Summer Events

music

Red's Warehouse — 'Appaloosa' — Blues Brothers' — Time Theatre in Mattoon. 7:05 p.m.
Show begins at 9 p.m., Thursday, Friday, and Saturday.

Charleston VFW — Dance to 'Men Of Steel' 9:00-12:00, Friday.
Saturday: 5:00 supper, Bingo 7:00.

Charleston Elks — 'Clarence' — Will Rogers Theatre in Charleston. 7:30 p.m.
Lighting Band.'

potpourri

DeWitt County Fair

Thursday
Horse Racing 2 p.m.
Livestock Auction 7 p.m.
Bicentennial Pageant
Friday
Horse racing, 2 p.m.
Tractor Pulling Contest

movies

'The Island' and 'The Legacy' — Skyway Drive-In in Mattoon. Open 8 p.m.

'Wholly Moses.' — Will Rogers Theatre in Charleston. 7:30 p.m.

'Return of the Dragon' and 'Game of Death' — Charleston Drive In.

'The Empire Strikes Back,' —Mattoon Triple Cinema. 7 and 9:20 p.m.

'The Blue Lagoon,' —Mattoon Triple Cinema, 7:15 and 9:10 p.m.

'Honeysuckle Rose,' 7:10 p.m. and 9:30 p.m. Mattoon Triple Cinema.

CROSSWORD PUZZLE

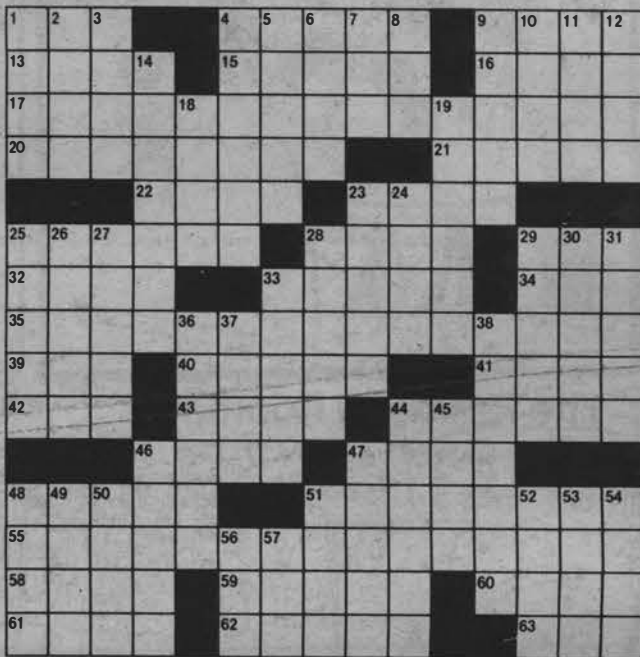
Edited by EUGENE T. MALESKA

- ACROSS**
- 1 Valiant Virginian
 - 4 Very rich man
 - 9 Part of Jr.'s homework
 - 13 Jardinieres
 - 15 Where Mt. Borah is
 - 16 Neutral color
 - 17 Assembled hastily
 - 20 Purchases at perfumeries
 - 21 One reason for man's inhumanity to man
 - 22 Penury
 - 23 Challenge
 - 25 Hits hard
 - 28 City on the Rhine
 - 29 Grunt indicating horror
 - 32 Rose lover
 - 33 Pact that was sacked
 - 34 Modernist
 - 35 Illuminating
 - 39 Seth, to Adam
 - 40 Zodiac sign
 - 41 Vice principal
 - 42 Geological period
 - 43 Lost in delight
 - 44 Bailiwick of a ship's cook
 - 46 Chromosome part
 - 47 Brewer's supply
 - 48 Show scorn
 - 51 Least lucid
 - 55 Sets to work at
 - 58 African bigwig
 - 59 Stupid
 - 60 Reading
 - 61 Harmful thing

- DOWN**
- 1 Biblical book
 - 2 Kin of our national bird
 - 3 Biblical oldster
 - 4 Some of the younger generation
 - 5 Wrote a P.S.
 - 6 Night fliers
 - 7 Cousin of aha
 - 8 Fenny tract
 - 9 English poet's concern
 - 10 Subject of a patient's plaint
 - 11 What Daphne became

- 12 Noted painter of ranch hands
- 14 Like 20 Across
- 18 Kind of hole or cap
- 19 Jan. 1 drink
- 23 Scores for Gordie Howe
- 24 Opposer
- 25 No longer in vogue
- 26 Hate
- 27 Tuscan city
- 28 Cause to be
- 29 "Wait — Dark": 1967 film
- 30 Crystalline rock
- 31 Darling

- 33 Game bird
- 36 Defiant ones
- 37 Khomeini's land
- 38 Uncertain
- 44 Deduce
- 45 Ski resort in the West
- 46 Sort
- 47 Billiard shot
- 48 Effort
- 49 Lion in the Tarzan books
- 50 Where Tralee is
- 51 Inclination
- 52 Cheese variety
- 53 Greek portico
- 54 Narrated
- 56 Extra
- 57 Born



(For answers see page 11)

Credentials... Army ROTC can help put yours in better shape. With practical management training, leadership experiences and the gold bars of an Army officer... the kinds of extras employers look for in the college graduates they hire.

Start shaping up your credentials. Find out more about the Army ROTC 2-year program. See Captain J. Kantor, 101-A Applied Arts

Things are shaping up.

Don't be bugged by unwanted items,

place a classified ad today

CINEMA 1 2 3
DOWNTOWN MATTOON • 258-8228

THE EMPIRE STRIKES BACK ENDS TONIGHT! PG
4:40 ADULTS \$2.00
7:00 & 9:20

THE BLUE LAGOON A Columbia Picture Release
5:20 ADULTS \$1.50
7:15 & 9:10

WILLIE NELSON DYAN CANNON HONEYSUCKLE ROSE PG
4:50 ADULTS \$1.50
7:05 & 9:20

STARTS TOMORROW!!
The Latest Fashion...In Murder.

MICHAEL CAINE
ANGIE DICKINSON

DRESSED TO KILL

A FILMWAYS PICTURE

FRIDAY AT 5:30 ADULTS \$1.50 7:30 & 9:30

FAT Albert's
MEAT, FISH & DISTILLING CO.
CROSS COUNTY MALL

Presents ...
Sunday Buffet Brunch

All You Can Eat
11:00 a.m.-2:00 p.m.

\$5.95

Includes:

- Roast Beef
- Breaded Shrimp
- Ham
- Fried Chicken
- Battered Cod
- Sausage Links
- Bacon
- Biscuits and Gravy
- Chipped Beef in Cream Sauce
- Taco's (make your own)
- Scrambled Eggs
- Salads
- Fresh Fruit
- Fresh Homemade Cakes-Pies-Pasteries

Summer Comics

Willie



by Stuart Haughee

The Raunchy Roommates



by Mark Hepner

Fido



by Roger Gilkison

JP



by Eric Smith

E.L. SMITH '80

Weekend viewing

Friday

6:00 p.m.
20,38—News
with
Family
Wett
Wild
6:30 p.m.
Days Again

Tac Dough
Dyke
Heroes
ers
Lehrer Report
Wits
7:00 p.m.
uck Rogers
Shadow
One Million Years B.C."
e-age melodrama with
h and John Richardson
ic nature. Percy Herbert.
ke
k and Mindy
Zone
7:30 p.m.
us Apples

8:00 p.m.
ove - About a residential
for abused children in
ifornia.
by Jones
e—"Son-Rise: A Miracle
mes Farentino, Kathryn

Geographic
y Miller
ough
8:30 p.m.
dy's Perfect
Wits
9:00 p.m.
Landing

Wild
Downstairs

9:30 p.m.

10:00 p.m.
7,20—News
Dyke
Wett
Heroes
10:30 p.m.
ight
San Francisco
er: Cell Block H
ns
ed News
News
10:50 p.m.
e's Angels
11:00 p.m.
he." (1965) A young
(John Richardson) is
terious lost city. Ursula
topher Lee.
h the Matter of Karen
(1977) About the New
that raised the con-
e of the "right to die."
per Laurie.
h the Beach." (1959)
lives of people as they
after a nuclear war.
Ava Gardner, Fred
y Perkins.
11:30 p.m.

12:00 p.m.
orrow
a

Friday

6:00 p.m.
2,3,10,15,20,38—News
9—Andy Griffith
11—All in the Family
12—Dick Cavett
17—Joker's Wild

6:30 p.m.
2—Happy Days Again
3—MASH
9—Dick Van Dyke
10,17—Tic Tac Dough
11—Hogan's Heroes
12—McNeil/Lehrer Report
15,20—Seekers
38—Cross-Wits

7:00 p.m.
2,15,20—Different Strokes
9—Movie: "The Hatfields and the
McCoys." (1975) The legendary
Kentucky-West Virginia feud of the
1880s. Jack Palance, Steve Forrest.
Karen Lamm, Richard Hatch.
3,10—Incredible Hulk
11—Gunsmoke
12—Twilight Zone
17,38—Benson

7:30 p.m.
2,15,20—Facts of Life
12—Wall Street Week
17,38—Goodtime Girls

8:00 p.m.
3,10—Dukes of Hazzard
2,15,20—Speak up America
12—Washington Week in Review
11—Tic Tac Dough
17,38—Movie "Casino." (1980) The
maiden voyage of a seagoing gam-
bling casino is sabotaged by the
baffling, violent acts of an unknown
terrorist. Mike Connors, Lynda Day
George, Robert Reed.

8:30 p.m.
9—Inn News
12—Bonaventure Consumer Travel
11—Cross Wits

9:00 p.m.
10—Dallas
2,15,20—Boxing
3,9—News
11—Joker's Wild
12—Non Fiction Television:
documentary focusing on New York
residence.

9:30 p.m.
3,9—Baseball: Cubs vs. Giants
11—News

10:00 p.m.
2,10,15,17,20—News
11—Benny Hill
12—Dick Cavett
38—Hogan's Heroes

10:30 p.m.
2,15,20—Tonight
11—Prisoner: Cell Block H.
10—Avengers
12—Captioned ABC News
17,38—Fridays

11:00 p.m.
11—Movie: "Shamus." (1973) Burt
Reynolds plays rough as a Brooklyn
private eye hired to recover a fortune
in stolen diamonds. Dyan Dannon.

11:40 p.m.
10—Return of the Saint
38—Don Kirshner's Rock Concert
17—America's Top 10

12:00 a.m.
2,15,20—Midnight Special
3—Rookies

Saturday

5:30 p.m.
2,3,10,15,17,20,38—News
12—Sports Unlimited
11—Gong Show
17—Dick Van Dyke
38—That Nashville Music

6:00 p.m.
2,3,10,—News
9—America's Top 10
11—Sha Na Na
12—Jazz at the Maintenance Shop
15,20—Hee Haw
17—America's Athletes
38—Country Roads

6:30 p.m.
2—Pop Goes the Country
3—Family Feud
9—Dick Van Dyke
10—Muppet Show
11—\$100,000 Name That Tune
38—Sha Na Na

7:00 p.m.
2,15,20—BJ and the Bear
3,10—Universe
9—Wild Kingdom
11—Country Roads
12—Austin City Limits
17,38—240-Robert

7:30 p.m.
3,10—Movie—"The Prince of Central
Park." (1977) Sweet-sad movie about
two runaway youngsters learning
above love and trust from a New York
widow (Ruth Gordon). T.J. Hargrave,
Lisa Richards.
9—In Search Of
11—That Nashville Music

8:00 p.m.
2,15,20—BJ and the Bear
9—NASL Soccer
11—Porter Wagoner
17,38—Love Boat

Sunday

8:00 p.m.
2,15,20—From Here to Eternity
3,10—Alice
9—The Palace
12—Masterpiece Theatre

8:30 p.m.
3,10—Jeffersons

9:00 p.m.
3,10—Trapper John M.D.
9—Lawrence Welk
11—News
12—All Creatures Great and Small

9:30 p.m.
11—Think About Tomorrow

9:45 p.m.
17,38—To Be Announced

10:00 p.m.
2,3,9,10,15,17,20,38—News
11—James Robison
12—Monty Python's Flying Circus

10:15 p.m.
38—700 Club

10:30 p.m.
2—Eischied
3—Star Trek
9—Movie: "San Antonia." (1945)
Saddle up with Errol Flynn as he
endeavors to rid the town of outlaws.
Alex Smith S.Z. Sakall, Paul Kelly.
10—Marty Robbins' Spotlight
11—Phone Power
12—David Susskind
15,20—Movie: "Terror of the 40th
Floor." (1974) A group of party goers
trapped on the top floor of a blazing
skyscraper. John Forsythe, Anjanette
Comer, Don Meredith.
17—Porter Wagoner

11:00 p.m.
10—Gunsmoke
17—Roald Dahl's Tales of the
Unexpected.

11:30 p.m.
2—Kate Loves a Mystery
17—PTL
3—Call About

12:00 p.m.
11—David Susskind

Health Sciences majors... Army ROTC
can add more shape to your chosen course of
study. With practical management training.
With real leadership experiences. And with
immediate responsibility as an Army officer,
full time on active duty or part time in reserve,
while you pursue your civilian career.

Put more shape into your college studies.
Ask about the Army ROTC 2-year program.

See Captain J. Kantor, 101-A Applied Arts

Things are shaping up.

At TED's
this weekend
Thurs.



Midweek admission prices.

Draft beer special 50¢ Mich or Bud

"Appaloosa"

Fri. & Sat.

"Appaloosa"

Country rock at its finest.

Don't miss Appaloosa - Last chance
to see them this semester



ALWAYS
3 for \$1.00
LITTLE KINGS

Saloon
Country Music

509
Van Buren

pool tables ★ Wear your cowboy hat
★ Come see Ed's collection of animals

Sesquicentennial pageant to feature Lincoln, Douglas

by Vicki Shaw

Coles County residents, who for some reason or another missed it the first time around, will be given a second chance Thursday night to witness Abraham Lincoln and Stephen A. Douglas re-enact their famous debate held during the senatorial campaign of 1858.

The debate will be just one feature of the Coles County Sesquicentennial pageant to be held at approximately 7:30 p.m. at the fairgrounds grandstand, following the pig kissing contest.

The pageant will be a review of 150 years of Coles County history.

Lincoln, more than the others, plays an important part in Coles County history, where his father and step-mother lived and were buried.

Lincoln will be portrayed by Lester Davis who physically resembles Lincoln and has traveled to many cities in the state to present his portrayal of the 16th president.

The Charleston debate is the only time Lincoln publically gave a statement of his opinions towards the black race, John Landon, co-producer and director of the pageant said.

Stephen A. Douglas, a former Illinois senator and known to many as the "Little Giant," will be portrayed by Don Drake, owner of Security Roofing and Siding Co. Inc.

Davis and Drake have previously done a three state tour with their portrayals of Lincoln and Douglas. At the request of Senator Percy of Illinois, the two took their act to Washington and performed in the Senate chambers, Landon said.

Ulysses S. Grant will also return to Coles County in a portrayal by Col. Paul LeGreco. He will interpret Grant's feelings when he

arrived at Camp Goode in Mattoon on May 15, 1861 to muster in a group of volunteers for the Union Army.

At the time, Grant was an unknown captain trying to revive his Army career. The area where Camp Goode was located is presently known as Grant's Park.

LeGreco has played the part of General Grant all over the country, Landon said. He appeared at the Henry Ford Museum in Dearborne, Michigan during the country's bicentennial celebration and has also made appearances on NBC.

The pageant will also include a re-enactment of the "Charleston Riot" of 1864. The members of the 98th Illinois Infantry led by Col. William Ashbaugh will portray the characters of the riot, a shooting incident between Union soldiers and Copperheads (southern sympathizers) which originally took place on the courthouse square in Charleston.

Members of the 98th will also present scenes depicting the fighting between the north and south during the Civil War.

Another feature of the pageant will be the re-enactment of the 1834 duel between Peter Glassco and John Gately played by Gary Shook and Randy White respectively.

Landon said the cause of the duel was never recorded but it ended with a surprising twist which should be entertaining to the audience, he said.

Landon said there are also 400 slides showing the background and scenes of Coles County throughout the years. One picture dates back to 1860.

The pageant will last approximately two hours, he said.

The cost will be \$3 for adults and \$1.50 for children.

Official Notices

Official Notices are paid for through the Office of University Relations. Questions concerning notices should be directed to that Office.

FINAL EXAMINATION SCHEDULE EIGHT-WEEK SUMMER TERM 1980

	Monday August 11	Tuesday August 12	Wednesday August 13
0730-0930	M-1020	M-0730	M-1145
1000-1200	M-0800- Makeup, or Arranged	M-0900 Makeup, or Arranged	M-0855
1300-1500	M-1030	M-1310	Makeup, or Arranged
1900-2100	M-1900	T-1900	

FINAL EXAM SCHEDULE

- Final examinations are scheduled on the basis of the first class hour meeting of the week irrespective of whether the first hour is classroom or laboratory activity.
 - Final examinations for multiple-hour classes are scheduled on the basis of the first hour of the multiple-hour block.
 - A M- or T- prefix indicates whether the first class day of the week is Monday or Tuesday. For instance, M-0840 indicates the schedule time for the final examination in a course having its first class-hour meeting of the week at 0840 on Monday, T-1230 is for a class having its first class-hour meeting of the week at 1230 on Tuesday, etc.
 - Final examination periods indicated in the above schedule as "Makeup or Arranged" are to be used only in cases where:
 - The first class hour meeting of the week does not conform to the schedule patterns established herein.
 - The meeting of the class appears in the Summer Term Class Schedule as "ARR."
 - The student presents an approved examination change request.
 - Final examinations for courses numbered 4750 or above may be given at the discretion of the instructor and, if given, are to conform to the schedule patterns established herein.
 - Final examinations for intersession and five-week sessions courses should be scheduled for regular class meeting time on examination day stipulated in the Summer Term 1980 calendar.
 - Final examinations are to be given in all courses unless specifically exempted under the provisions of Nos. 5 and/or No. 6 above or departmental recommendation to, and approval by, the Council on Academic Affairs.
 - Students may not deviate from the published final examination schedule without written approval of the Dean, Student Academic Services.
 - Instructors may not deviate from the published final examination schedule without written approval of the department chairperson and Dean of the School or College according to guidelines established by the Vice President for Academic Affairs.
- Samuel J. Taber, Director
Student Academic Services

CAMPUS INTERVIEWS

August 4 and 5 - Army (Nep. Room - University Union - 9 a.m. to 5 p.m.) - Walk-in, no appointments needed.

James Knott, Director
Career Planning
Placement Center

Finances... Army ROTC can help put yours in better shape. With assistance of nearly \$2500 during your next two years of college, opportunities for scholarships paying full tuition and more, and options for additional part-time earnings of about \$1000 per year.

Start shaping up your finances. Find out more today about the Army ROTC 2-year program.

See Captain Kantor, 101-A Applied Arts
Things are shaping up.

Thunderbird Band

Thursday July 31
and thru August

Cover \$1.00

Special 3 - 7 oz. Michelobs
for \$1.00

Get your free pass tickets from

Amerilla's of Charleston,

Ross Clothier & Meis of

Mattoon with purchase



WHAT'S COOKIN'

250 Lincoln

10:30 am to 9:30 pm
Tues-Sun

Carry-out Available
345-7427

SPECIAL CHICKEN TACOS

with sour creme

- Gyros • BBQ Ribs • Sandwiches •
- Mexican Food • Strawberry Bread & more •

Gate Way LIQUORS

Carton of Cigarettes

req. \$5.43 sale \$5.14

any brand in stock

coupon good through Aug. 3

REVISED FALL SEMESTER 1980 CLASS SCHEDULE

EASTERN ILLINOIS UNIVERSITY

BUILDING AND ROOM ABBREVIATIONS

FALL SEMESTER 1980

APPLIED ARTS AND EDUCATION	LFH	LANTZ FIELD HOUSE
BOWLING ALLEY, UNION	LG	LOWER GYM, MCAFEE
BALCONY, LANTZ	LR	LOCKER ROOM, MCAFEE
BASKETBALL GYM	LS	LIFE SCIENCE BUILDING
BLAIR HALL	LWR	LANTZ WRESTLING ROOM
BUZZARD EDUCATION BUILDING	M	OLD MAIN
BUZZARD EDUCATION BUILDING,	MG	MCAFEE GYMNASIUM
NORTH GYM	NG	NORTH GYM, MCAFEE
BUZZARD EDUCATION BUILDING,	PHB	PEMBERTON HALL BASEMENT
SOUTH GYM	PO	POOL, LANTZ
COURTS	RA	RANGE
CORRECTIVE GYM, LANTZ	REH AREA	REHEARSAL AREA, FINE ARTS
COLEMAN HALL	RES L	RESEARCH LAB
CLINICAL SERVICES BUILDING	S	PHYSICAL SCIENCE BUILDING
DVORAK CONCERT HALL	SG	SOUTH GYM, MCAFEE
DANCE STUDIO, MCAFEE	SPC	SPORTSMAN'S CLUB
FIELDS	SSB	STUDENT SERVICES BUILDING
FINE ARTS, ART	STAD	STADIUM
FINE ARTS, MUSIC	STC	STEVENSON TOWER CONF. ROOM
FINE ARTS, THEATRE ARTS	T	MUSIC, THEATRE WING, FINE ARTS
FITNESS GYM, LANTZ	TC	TC LAKE
FIELD HOUSE	TH	THEATRE, FINE ARTS CENTER
GOLF COURSE	TR	TRACK
GYMNASIUM GYM, LANTZ	TR RM	TRAINING ROOM
GREEN ROOM, FINE ARTS	WG	WRESTLING GYM, LANTZ
INDOOR ARCHERY RANGE, MCAFEE	WLR	WEST LOCKER ROOM
LIBRARY	VAR LOU	VARSITY LOUNGE
LANTZ BUILDING		

Early Graduate Registration	Aug 23
Central Registration	Aug 25, 26
Classes Begin	Aug 27
Labor Day Observance--No Classes	Sept 1
Last Day to Submit Add, Pass-Fail or Audit Requests	Sept 2
Last Day for Partial Refund Upon Withdrawal from University	Sept 5
Last Day to Apply for Graduation	Sept 5
Last Day for Course Withdrawal Without Grade	Sept 5 (4:30pm)
Begin W Upon Course Withdrawal	Sept 6
Mid-Term	Oct 17
Last Day for W Upon Course Withdrawal	Oct 27 (4:30pm)
Begin WP or WF Upon Course Withdrawal	Oct 28
Last Day to Withdraw from Courses or University	Nov 7 (4:30pm)
Thanksgiving Recess	Nov 26 thru 30
Final Examinations	Dec 15 thru 19
Semester Closes	Dec 20

GRADUATE STUDENT LOAD

THE MAXIMUM LOAD FOR GRADUATE STUDENTS IS 16 SEMESTER HOURS.

GRADUATE COURSES

DURING THE FINAL SEMESTER OF RESIDENCE IN UNDERGRADUATE WORK OR THE PENULTIMATE SEMESTER OF RESIDENCE (IF THE FINAL SEMESTER IS TO BE SPENT IN STUDENT TEACHING OR INTERNSHIP), A SENIOR MAY TAKE GRADUATE COURSES NUMBERED BELOW 5500 WITH CREDIT WHICH REPRESENTS THE DIFFERENCE BETWEEN THAT REQUIRED TO COMPLETE THE UNDERGRADUATE DEGREE AND THE MAXIMUM ALLOWED A GRADUATE STUDENT IN THAT TERM. THE SENIOR WHO DESIRES TO TAKE SUCH GRADUATE COURSES IN THE SENIOR YEAR MUST HAVE A CUMULATIVE GPA OF AT LEAST 2.75 AND HAVE THE PERMISSION OF THE INSTRUCTOR AND THE DEAN OF THE GRADUATE SCHOOL.

CANCELLATION OF SMALL CLASSES

SECTIONS OF COURSES NUMBERED 1000-2999 ENROLLING LESS THAN 10 STUDENTS WILL BE CANCELLED. COURSES NUMBERED 3000-4999 ENROLLING LESS THAN 10 STUDENTS WHICH ARE OFFERED MORE THAN ONCE DURING THE ACADEMIC YEAR WILL BE CANCELLED. COURSES NUMBERED 3000-4999 ENROLLING LESS THAN SIX STUDENTS MAY BE CANCELLED REGARDLESS OF THE NUMBER OF TIMES OFFERED DURING THE YEAR.

Financial Aids

Applications for both the Illinois State Commission Monetary Grant (for all Illinois undergraduates) and the Basic Educational Opportunity Grant Program (for all undergraduates) are available in the Office of Financial Aids, Room 12-B, Student Services Building. Brochures describing the Student Health and Accident Policy are available in Room 8-B, Student Services Building.

INDEPENDENT STUDY COURSES

Students may not preregister for independent study. With the approval of the department chairperson, students may register for independent study during the central registration period and the regular drop-add period.

INFORMATION for Fall Semester 1980

SCHEDULE CHANGES

Make Adds and Drops for Fall classes in the Union Ballroom from 9:00 a.m. until 2:00 p.m. on August 27, 28, 29, and September 2.

PASS/FAIL GRADING STATUS

Pass/Fail Cards will be available outside the Registration Office beginning Monday, August 25 and ending Wednesday, September 3. The cards must be completed and put into the slotted box outside the Registration Operations Room (south basement McAfee) by 4:30 p.m., Wednesday, September 3.

AUDIT GRADING STATUS

Obtain an Audit Card in the Registration Operations Room, complete it AND have it signed by the instructor of the class. Return the Audit Card to the Registration Office no later than 4:30 p.m., Wednesday, September 3.

REFUNDS

The last day to cancel Fall classes and receive a full refund is Friday, August 22, 3:00 p.m. The last day for a partial refund is Friday, September 5; a partial refund is all fees and tuition paid except insurance. The last day for a 50% refund upon withdrawal from the University is Tuesday, September 16, 3:00 p.m.; 50% of all fees and tuition paid--except insurance--will be refunded.

OVERLOAD FEES

You will be assessed FOR EACH HOUR OVER 18 SEMESTER HOURS remaining on your Fall class schedule after Friday, September 5, 4:30 p.m.

ACADEMIC LOAD

When enrolling or pre-enrolling, please observe the credit-hour limits as specified in the University catalog under the heading "Academic Load." Exceptions to the specified limits must be in the form of an approved waiver from the dean of the appropriate school or college and should be presented to the Dean, Student Academic Services, 118 Old Main, PRIOR to the beginning of the term for which the exception is to be granted.

ALL STUDENTS

Be sure your name appears on the official tenth-day class roster for any class you attend. If your name does not appear on the tenth-day class roster, contact the Registration Office IMMEDIATELY.

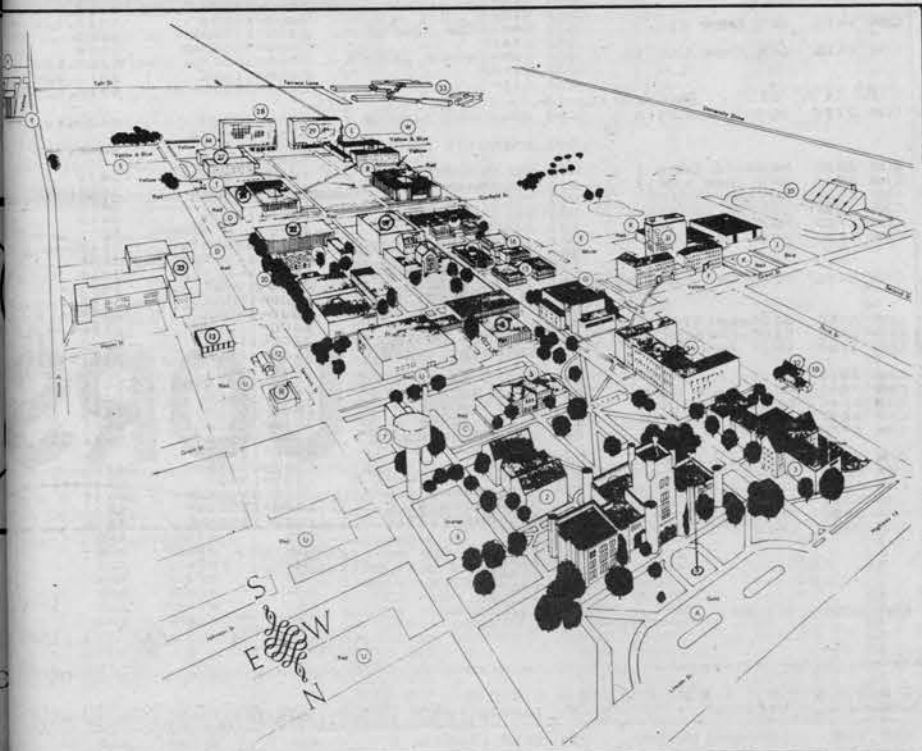
OFFICIAL NOTICES

Watch the "Official Notices" in the Eastern News for important information throughout the term.

REGISTRATION OFFICE

The Registration Office is located in the south basement of McAfee. Office hours are 8:30 a.m. to 12:00 noon and 1:00 p.m. to 4:30 p.m.

Eastern Illinois University Campus

- 
1. Old Main - Admissions (Livingston C. Lord Administration Building)
 2. Blair Hall
 3. Pemberton Hall
 4. Science Building
 5. Student Services Building
 7. Power Plant
 8. McAfee Gymnasium
 9. University Union
 10. Custodian Quarters (Booth House)
 11. Telephone and Security Building
 12. Buzzard House
 13. Clinical Services Building
 14. Fine Arts Center
 15. Ford Hall
 16. McKinney Hall
 17. Weller Hall
 18. Gregg Triad
 19. Booth Library
 20. Life Science Vivarium
 21. Greenhouse
 22. Life Science Building
 23. Laboratory School
 24. Applied Arts-Education Center
 25. Coleman Hall
 26. Taylor Hall
 27. Thomas Hall
 28. Andrews Hall
 29. Lawson Hall
 30. Lantz Health, Physical Education and Recreation Building
 31. Lincoln-Douglas-Stevenson Halls
 32. Booth House
 33. University Apartments
 34. Carman Hall
 35. Stadium-Track
 36. Phipps Lecture Hall
- Parking Areas Indicated by Letter and Color Word

ARTS AND SCIENCES				
COURSE DESCRIPTION	SECT.	INSTRUCTOR	MEETING TIME	BLDG/ROOM R.
AES 2100 ASCENT OF MAN	001	GOUDRICH MICHAEL A	1900-2040R	S121 02

ACCOUNTING				
COURSE DESCRIPTION	SECT.	INSTRUCTOR	MEETING TIME	BLDG/ROOM R.
ACC 2100 PRIN OF FIN ACC	001	STAFF	0800-0850MWF	BH103 04
ACC 2150 PRIN OF MGT ACC	001	STAFF	0800-0850MWF	BH103 04
ACC 2200 IND INCOME TAX	001	STAFF	0800-0850MWF	BH103 04
ACC 3030 COST ACCOUNTING	001	STAFF	0800-0850MWF	BH103 04
ACC 3041 FIN ACC REP TH I	001	STAFF	0800-0850MWF	BH103 04
ACC 3051 FIN AC REP TH II	001	STAFF	0800-0850MWF	BH103 04
ACC 3701 GOVERNMENTAL ACC	001	STAFF	0800-0850MWF	BH103 04
ACC 4050 ADV ACC & CONSUL	001	STAFF	0800-0850MWF	BH103 04
ACC 4275 INTERNSHIP/ACC	001	STAFF	0800-0850MWF	BH103 04
ACC 4610 FED INCOME TAX	001	STAFF	0800-0850MWF	BH103 04
ACC 4650 AUDITING	001	STAFF	0800-0850MWF	BH103 04

AFRO-AMERICAN STUDIES				
COURSE DESCRIPTION	SECT.	INSTRUCTOR	MEETING TIME	BLDG/ROOM R.
AFR 2000 INTRC/AFRO-AM	001	JONES JOHNETTA	0930-1045TR	CH225 03

ANTHROPOLOGY				
COURSE DESCRIPTION	SECT.	INSTRUCTOR	MEETING TIME	BLDG/ROOM R.
ANT 2730 INTRC/ANTHRU	001	SWARTZBAUGH RICHARD	1100-1215TR	CH226 03
ANT 3611 PEOP/CULT/AFRICA	001	SWARTZBAUGH RICHARD	1100-1150MWF	CH326 03
ANT 3691 NURTH AM INDIANS	001	MAGALIS JOANNE E	1300-1350MWF	CH326 03
ANT 3701 FEUDS/RAIDS/WAR	001	MAGALIS JOANNE E	0900-0950MWF	CH337 03

ART				
COURSE DESCRIPTION	SECT.	INSTRUCTOR	MEETING TIME	BLDG/ROOM R.
ART 1000 DRAWING I	001	STAFF	0800-0940MWF	BE103 03
ART 1110 DESIGN	001	EMMERICH CARL E	1000-1140MWF	FAA212 03
ART 1111 3-D DESIGN	001	EMMERICH CARL E	1200-1340MWF	FAA212 03
ART 1650 THEORY/FUND ART	001	EMMERICH CARL E	0800-0940MWF	FAA212 03
ART 2000 DRAWING II	001	WILEN CARL	1200-1340MWF	BE103 03
ART 2011 ART ORIENTATION	001	BODINE PAUL G	1200-1250R	LIB LEC 01
ART 2050 PAINTING I	001	STAFF	1000-1140MWF	FAA300 03
ART 2100 SCULPTURE I	001	SHULL CARL E	1400-1540MWF	FAA300 03
ART 2250 CERAMICS I	001	KNOOP CARY I	0800-0940MWF	FAA100 03
ART 2300 AFRO-AMER ART	001	STAFF	0930-1045TR	FAA202 03
ART 2340 GENERAL CRAFTS	001	BUFFINGTON RUDNEY H	0800-0940MWF	FAA302 03
ART 2440 ART TEACH ELEM	001	MCOWELL PAUL K	0800-0940TR	FAA302 02
ART 2560 PRINTMAKING I	001	TRANK LYNN EDGAR	1000-1140MWF	FAA309 03
ART 2601 ART HISTORY I	001	DARLING JANINA K	1500-1550MWF	FAA202 04
ART 2602 ART HISTORY II	001	DARLING JANINA K	1400-1450MWF	FAA202 04
ART 2651 UNDERSTAND ART	001	WATKINS BEN P	1400-1450MWF	FAA203 04
ART 2652 ART/PAST CULTURE	001	WATKINS BEN P	1000-1050MWF	FAA203 04
ART 2653 20 CENT ART	001	WATKINS BEN P	0800-0850MWF	FAA203 03
ART 2700 INTRO JLV/SLVRSM	001	DEUITER GARRET W	0800-0940MWF	FAA102 03
ART 2800 INTRO TO WEAVING	001	BRAUN SUZAN G	1200-1340MWF	FAA217 03
ART 2900 LETTER/TYPE DSGN	001	RCLLER TERRY M	0800-1030TR	FAA305 03
ART 3000 DRAWING III	001	RCLLER TERRY M	1400-1630TR	BE103 03
ART 3011 EXHIBITION TECH	001	JCHNSON JAMES K	1200-1250R	FAA202 01
ART 3051 PAINTING II	001	WILEN CARL	1400-1540MWF	FAA300 03
ART 3052 PAINTING III	001	WILEN CARL	1400-1540MWF	FAA300 03
ART 3080 WATERCOLOR	001	SRGE WALTER	1100-1330TR	FAA309 03
ART 3111 SCULPTURE II	001	KNOOP CARY I	0800-1030TR	BE123 03
ART 3112 SCULPTURE III	001	KNOOP CARY I	0800-1030TR	BE123 03
ART 3251 CERAMICS II	001	KRUTZA JUNE M	1400-1540MWF	FAA100 03
ART 3410 ART EL/SEC SCHLS	001	MCOWELL PAUL K	1500-1640T	FAA302 03
ART 3570 PRINTMAKING II	001	TRANK LYNN EDGAR	0800-0940MWF	FAA309 03
ART 3630 GREEK/ROMAN ART	001	DARLING JANINA K	1000-1050MWF	FAA202 03
ART 3650 ART/ITALIAN REN	001	HEGARTY MELINDA	0900-0950MWF	FAA203 03
ART 3701 JLV SLVRSM I	001	DEUITER GARRET W	0800-0940MWF	FAA102 03
ART 3702 JLV SLVRSM III	001	DEUITER GARRET W	0800-0940MWF	FAA102 03
ART 3820 TEXTILE DESIGN	001	BRAUN SUZAN G	1400-1540MWF	FAA217 03
ART 3900 AIRBRUSH	001	RCLLER TERRY M	1000-1140MWF	FAA305 03
ART 3901 VISUAL COMM I	001	HILL R BRADFORD	1200-1340MWF	FAA305 03
ART 3902 VISUAL COMM II	001	HILL R BRADFORD	1400-1540MWF	FAA305 03
ART 4000 DRAWING IV	001	SHULL CARL E	1400-1630TR	BE103 03
ART 4051 PAINTING IV	001	SHULL CARL E	1100-1330TR	FAA309 03
ART 4052 PAINTING V	001	SHULL CARL E	1100-1330TR	FAA309 03
ART 4111 SCULPTURE IV	001	KNOOP CARY I	0800-1030TR	BE123 03
ART 4112 SCULPTURE V	001	KNOOP CARY I	0800-1030TR	BE123 03
ART 4251 CERAMICS IV	001	KRUTZA JUNE M	1400-1540MWF	FAA100 03
ART 4252 CERAMICS V	001	HEYDUCK BILLY J	1000-1140MWF	FAA100 03
ART 4580 PRINTMAKING III	001	TRANK LYNN EDGAR	0800-0940MWF	FAA309 03
ART 4701 ADV CERAMICS I	001	DEUITER GARRET W	0800-0940MWF	FAA102 03
ART 4702 ADV CERAMICS II	001	DEUITER GARRET W	0800-0940MWF	FAA102 03
ART 4765 CNT AM PTG/SCLP	001	MCROBERTS JERRY W	0900-0950MWF	FAA202 03
ART 4900 ILLUSTRATION	001	HILL R BRADFORD	0800-0940MWF	FAA305 03
ART 5100 MTL/DESIGN I	001	STAFF	ARR MTWRF	ARR 02
ART 5200 PAINTING PRJB I	001	SHULL CARL E	1100-1330TR	FAA300 03
ART 5560 CNT PRINTMAKING	001	TRANK LYNN EDGAR	0800-0940MWF	FAA309 03
ART 5571 ADV CERAMICS	001	KRUTZA JUNE M	1400-1540MWF	FAA100 03
ART 5572 ADV CERAMICS	001	HEYDUCK BILLY J	1000-1140MWF	FAA100 03
ART 5600 MTL/DESIGN II	001	STAFF	ARR MTWRF	ARR 02
ART 5610 ADV DRAWING	001	SHULL CARL E	1400-1630TR	BE103 03
ART 5611 ADV DRAWING	001	SHULL CARL E	1400-1630TR	BE103 03
ART 5620 ADV WATERCOLOR	001	SRGE WALTER	1100-1330TR	FAA309 03
ART 5671 ADV SCULPTURE	001	KNOOP CARY I	0800-1030TR	BE123 03
ART 5701 PTG PRJB II	001	SHULL CARL E	1100-1330TR	FAA300 03
ART 5702 PTG PRJB III	001	SHULL CARL E	1100-1330TR	FAA300 03
ART 5771 PBLM/MTLSMTHNG I	001	DEUITER GARRET W	0800-0940MWF	FAA102 03
ART 5772 PBLM/MTLSMTHNG II	001	DEUITER GARRET W	0800-0940MWF	FAA102 03
ART 5800 RESEARCH/ART ED	001	STAFF	ARR MTWRF	ARR 02
ART 5850 ART INTERNSHIP	001	STAFF	ARR MTWRF	ARR 02
ART 5900 RESEARCH IN ART	001	STAFF	ARR MTWRF	ARR 02
ART 5950 THESIS	001	STAFF	ARR MTWRF	ARR 02

BOTANY				
COURSE DESCRIPTION	SECT.	INSTRUCTOR	MEETING TIME	BLDG/ROOM R.
BUT 1010 GENERAL BOTANY	001	EEINGER JOHN E	0900-0950M	LS206 02
BUT 1011 GENERAL BOT LAB	001	EEINGER JOHN E	1000-1050M	LS301 02
BUT 2290 MURPH LOWER PL	001	SCOTT WILLIAM W	1000-1050M	LS318 03
BUT 2300 MURPH HIGHER PL	001	WHITESIDE WESLEY C	0800-1030T	LS318 03
BUT 2319 INDOOR HORT	001	BECKER STEVEN A	1500-1550M	LSA226 02
BUT 2320 ECONMIC BOTANY	001	ARZENI CHARLES B	1100-1150TR	AAE107 02
BUT 2340 MICRO AND MAN	001	SMITH RICHARD L	1000-1140M	LS317 03
BUT 3300 BACTERIOLOGY	001	WEILER WILLIAM A	0800-0850M	LS301.317 04
BUT 3541 PLANT PHYSIOLOGY	001	DARDING ROGER L	1000-1140TR	LS206 04
BUT 4751 LICHENS	001	WHITESIDE WESLEY C	1000-1140TR	LS205 02
BUT 4801 SYST BOTANY	001	EBINGER JOHN E	1300-1530T	LS205 03
BUT 4811 PLANT ECOLOGY	001	ZIMMERMAN U DOUGLAS	0800-0850M	LS205 03
BUT 4821 BRYOLOGY	001	ARZENI CHARLES B	1900-2130T	LS318 03
BUT 4851 PLANT ANATOMY	001	BECKER STEVEN A	1000-1050M	LS205 03
BUT 4901 PLANT PATHOLOGY	001	GRAY GRANT G	1000-1140M	LS318 03
BUT 4990 SEMINAR	001	STAFF	ARR MTWRF	ARR 03
BUT 5102 AQUATIC MACRGS	001	EBINGER JOHN E	0800-0940TR	LSA228 02
BUT 5222 CYTOTOXINOLOGY	001	SPERER JOHN M	1100-1240TR	LS318 03
BUT 5371 FUNGI II	001	WHITESIDE WESLEY C	1300-1530MWF	LS310 04
BUT 5950 THESIS	001	STAFF	ARR MTWRF	ARR 03

BUSINESS ADMINISTRATION				
COURSE DESCRIPTION	SECT.	INSTRUCTOR	MEETING TIME	BLDG/ROOM R.
BAD 5005 QUANT ANALYSIS	001	LCHRASEI ARDESHIR	1900-2130R	CH318 03
BAD 5010 ESSENTIAL OF ACC	001	MCCLEURE MALCOLM M	1900-2130T	BH205 03
BAD 5100 BUS RES METH	001	MEIER ROBERT E	1100-1150MWF	AAE316 03
BAD 5415 MARKETING MGT	001	JYER MICHAEL R	1000-1150TR	CH340 03
BAD 5670 INFO SYSTEMS	001	MEYER LEONARD E	1900-2130M	EH108 03
BAD 5990 ADMIN POLICY	001	WILLIAMS NED	1600-1830M	CH318 03
BAD 5950 THESIS	001	STAFF	ARR MTWRF	ARR 03

BUSINESS EDUCATION				
COURSE DESCRIPTION	SECT.	INSTRUCTOR	MEETING TIME	BLDG/ROOM R.
BED 1110 BASIC TYPE COMM	001	STAFF	1300-1350MWF	BH107 03
BED 1120 INTERM TYPE COMM	001	SULLIVAN ROBERT N	1100-1150MWF	BH107 03
BED 1240 SHORTHAND THEORY	001	COOPER GEORGE K	0900-0950MWF	BH107 03
BED 1250 INTERM SHORTHAND	001	ELLIOTT THOMAS L	0900-0950MWF	BH212 03
BED 1420 SURVEY BUS PRINC	001	CHASE DAYTON K	0900-0950MWF	BH313 03
BED 2010 BUS COMMUNICA	001	MURRY JACK	1230-1345TR	BH212 03
BED 2110 OFF PRDCT PRACT	001	CHASE DAYTON K	1400-1515TR	BH212 03
BED 2240 ADV SHD/TRANSCR	001	SANDERS ROSANNE B	1000-1050MWF	BH212 03
BED 3000 CONSUMER ED	001	ELLIOTT THOMAS L	1400-1450MWF	LIB LEC 03
BED 3220 OFF MACHN COMPUT	001	MURRY JACK	1000-1050MWF	BH200 03
BED 3230 ADMIN OFF SERV	001	COOPER GEORGE K	1300-1350MWF	BH200 03
BED 3300 PERS FIN INVEST	001	ELLIOTT THOMAS L	1400-1450MWF	BH200 03
BED 3400 METH OF TCHG BUS	001	CHASE DAYTON K	1100-1150TR	BH313 02
BED 3410 BUS/CON ED METH	001	COOPER GEORGE K	1000-1050TR	BH107 02
BED 3420 SHORTHAND METH	001	SANDERS ROSANNE B	0800-0850TR	BH212 02
BED 4000 SCH BUS MGT INTR	001	LAMAR MARJORIE	ARR MTWRF	ARR 03
BED 4275 INTERNSHIP IN BE	001	ELLIOTT THOMAS L	ARR MTWRF	ARR 03
BED 4750 OFFICE MGT	001	SANDERS ROSANNE B	1900-2130M	BH206 03
BED 4913 DRG/ADM COOP ED	001	CHASE DAYTON K	1900-2130T	BH207 03
BED 5950 THESIS	001	STAFF	ARR MTWRF	ARR 03

CHEMISTRY				
COURSE DESCRIPTION	SECT.	INSTRUCTOR	MEETING TIME	BLDG/ROOM R.
CHM 1050 ADVENTURES CHEM	001	STAFF	1100-1150MWF	S121.426 04
CHM 1250 CHEM ENERGMGT I	001	BUCHANAN DAVID H	1300-1350MWF	S415.312 03
CHM 1300 INTRO CHEM I	001	FOOTE C DAN	0800-0850MWF	S121 03
CHM 1310 GEN CHEM I	001	FOOTE C DAN	1100-1150MWF	S415 03
CHM 1315 GEN CHEM LAB I	001	STAFF	1300-1350MWF	S121 03
CHM 1410 GEN CHEM II	001	KARRAKER ROBERT H	1000-1050MWF	S121.434 03
CHM 1415 GEN CHEM LAB II	001	STAFF	1000-1050MWF	S121 03
CHM 2430, 2435 -- Students should elect CHM 3430, 3435				
CHM 2720 QUANT ANALYSIS	002	MARQUART JOHN R	1200-1250R	S434.440 03
CHM 2830 ORGANIC CHEM I	001	ELLIS JERRY W	1300-1550TR	S414 03
CHM 2835 ORG CHEM LAB I	001	BUCHANAN DAVID H	0800-1050R	S414.410 02
CHM 3000 JUNIOR SEMINAR	001	ELLIS JERRY W	1600-1650M	S415 00
CHM 3001 JUNIOR SEMINAR	001	ELLIS JERRY W	1600-1650M	S415 01
CHM 3100 PRACTICUM	001	STAFF	ARR MTWRF	ARR 01
CHM 3430 PRIN ORG CHEM I	001	JORDAN ROBERT W	0800-0850MWF	S432.415 01
CHM 3435 BIOCHEMISTRY	001	FOOTE C DAN	1200-1250MWF	S415 03
CHM 3780 INST ANAL LAB	001	SHERMAN EDWARD J	1200-1250M	S414.304 03
CHM 3910 PHYSICAL CHEM I	001	EDGON DAVID W	1100-1150MWF	S414 04
CHM 3940 CGMP PROG CHEM	001	HENDERSON GILES	1500-1650M	S414 02
CHM 4000 SENIOR SEMINAR	001	ELLIS JERRY W	1600-1650M	S415 00
CHM 4001 SENIOR SEMINAR	001	ELLIS JERRY W	1600-1650M	S415 01
CHM 4770 MOL STRUCT LAB	001	HENDERSON GILES	0900-0950M	S414.304 03
CHM				

COURSE DESCRIPTION	SECT.	INSTRUCTOR	MEETING TIME	BLDG/ROOM	C
1250 C-BASED INFO SYS	001	EASTER JANE M	1000-1050TR	BH108	02
2175 C-B SY & BUS APP	001	EASTER JANE M	0900-0950MWF	BH306	03
	002	EASTER JANE M	1100-1150MWF	BH306	03
	003	KNOTT BEULAH DELORES	1300-1350MWF	BH306	03
	004	KNOTT BEULAH DELORES	1500-1550MWF	BH306	03
	005	KNOTT BEULAH DELORES	1230-1345TR	BH306	03
	006	KNOTT BEULAH DELORES	1530-1645TR	BH306	03
	007	STAFF	1900-2130R	BH307	03
	008	EASTER JANE M	1400-1515TR	BH307	03
	009	MEYER LEONARD E	1100-1215TR	BH306	03
	010	MEYER LEONARD E	1530-1645TR	BH307	03
2300 C-BASED PROB SUL	001	STAFF	1600-1715MWF	BH306	03
	002	STAFF	0930-1045TR	BH306	03
2310 C-BASED BUS PROG	001	BCBALL MARK R	1000-1050MWF	BH306	03
	002	BCBALL MARK R	1100-1150MWF	BH307	03
3290 C-FILE ORG & MGT	001	MEYER LEONARD E	0800-0915TR	BH306	03
3310 DSGN OF INFO SYS	001	BCBALL MARK R	1200-1250MWF	BH307	03
3330 REAL-TIME SYS	001	STAFF	0900-0950MWF	BH307	03
4275 INTERNSHIP/DAP	003	EASTER JANE M	ARR	MTWRF	ARR
	006	EASTER JANE M	ARR	MTWRF	ARR
	009	EASTER JANE M	ARR	MTWRF	ARR
	012	EASTER JANE M	ARR	MTWRF	ARR
4610 MGT OF DATA PRJC	001	BCBALL MARK R	1500-1550MWF	BH307	03

COURSE DESCRIPTION	SECT.	INSTRUCTOR	MEETING TIME	BLDG/ROOM	C
1410 WEATHER-CLIMATE	001	WISE RICHARD L	0800-0940M	S320	04
	002	STAFF	0800-0850F		
	003	STAFF	1000-1140M	S320	04
	004	STAFF	1200-1340M	S320	04
	005	STAFF	1400-1500F		
1420 PHYSICAL GEOG	001	STAFF	1000-1140TR	S320	03
3410 CLIMATOLOGY	001	MCDONALD WALTER H	1200-1340TR	S320	03
	002	MCDONALD WALTER H	1900-2040M	S324	03

COURSE DESCRIPTION	SECT.	INSTRUCTOR	MEETING TIME	BLDG/ROOM	C
2801 PRIN ECON I	001	FAHY PAUL R	0800-0850MWF	CH206	03
	002	FAHY PAUL R	0900-0950MWF	CH206	03
	003	LEE SANG M	1000-1050MWF	CH206	03
	004	LENIHAN PATRICK M	1100-1150MWF	BE8140	03
	005	NORMAN LEE EARL	1200-1250MWF	CH206	03
	006	SMITH ALLEN W	1300-1350MWF	CH206	03
	007	LENIHAN PATRICK M	1400-1450MWF	CH206	03
	008	NORMAN LEE EARL	1500-1550MWF	CH206	03
	009	SUMMARY REBECCA	1300-1350MWF	CH211	03
	010	SMITH ALLEN W	0800-0915TR	CH206	03
	011	LEE SANG M	1100-1215TR	CH206	03
	012	LEE SANG M	1100-1215TR	CH206	03
	013	MAURY ALLEN	1200-1345TR	CH206	03
	014	SUMMARY REBECCA	1400-1515TR	CH206	03
	015	SMITH ALLEN W	0800-0915TR	CH211	03
	016	KARBASSIION EBRAHIM	0800-0850MWF	CH205	03
	017	KAGUK FREDERIC J	1400-1450MWF	CH211	03
	018	BATES LAWRENCE W	1300-1350MWF	CH211	03
	019	KAGUK FREDERIC J	1400-1450MWF	CH211	03
	020	CORLEY EDWARD M	0800-0850MWF	CH211	03
	021	CORLEY EDWARD M	0900-0950MWF	CH211	03
	022	KAGUK FREDERIC J	1000-1050MWF	CH211	03
	023	NORDIN HAROLD D	1100-1150MWF	CH211	03
	024	KAGUK FREDERIC J	1200-1250MWF	CH211	03
	025	NORDIN HAROLD D	1300-1350MWF	CH211	03
	026	SIDWELL RICHARD J	1600-1715M	CH211	03
	027	SIDWELL RICHARD J	1300-1350MWF	CH213	03
	028	KARBASSIION EBRAHIM	0930-1045TR	CH206	03
	029	MURAD AHMAD	1100-1215TR	CH211	03
	030	BATES LAWRENCE W	1500-1550MWF	CH213	03
	031	LEE SANG M	0800-0850MWF	CH213	03
	032	MAURY ALLEN	0900-0950MWF	CH213	03
	033	KARBASSIION EBRAHIM	1000-1050MWF	CH206	03
	034	MURAD AHMAD	1100-1150MWF	CH206	03
	035	MAURY ALLEN	1200-1250MWF	CH213	03
	036	KARBASSIION EBRAHIM	1300-1350MWF	AAE203	03
	037	MAURY ALLEN	0800-0915TR	CH213	03
	038	NORMAN LEE EARL	0930-1045TR	CH211	03
	039	NORMAN LEE EARL	1230-1345TR	CH213	03
	040	SUMMARY REBECCA	1400-1515TR	CH219	03
	041	SUMMARY REBECCA	1500-1550MWF	CH219	03
	042	SMITH ALLEN W	1230-1345TR	CH211	03
	043	STAFF	ARR	MTWRF	ARR
	044	STAFF	ARR	MTWRF	ARR
	045	STAFF	ARR	MTWRF	ARR
	046	STAFF	ARR	MTWRF	ARR
	047	STAFF	ARR	MTWRF	ARR
	048	STAFF	ARR	MTWRF	ARR
	049	STAFF	ARR	MTWRF	ARR
	050	STAFF	ARR	MTWRF	ARR
	051	STAFF	ARR	MTWRF	ARR
	052	STAFF	ARR	MTWRF	ARR
	053	STAFF	ARR	MTWRF	ARR
	054	STAFF	ARR	MTWRF	ARR
	055	STAFF	ARR	MTWRF	ARR
	056	STAFF	ARR	MTWRF	ARR
	057	STAFF	ARR	MTWRF	ARR
	058	STAFF	ARR	MTWRF	ARR
	059	STAFF	ARR	MTWRF	ARR
	060	STAFF	ARR	MTWRF	ARR
	061	STAFF	ARR	MTWRF	ARR
	062	STAFF	ARR	MTWRF	ARR
	063	STAFF	ARR	MTWRF	ARR
	064	STAFF	ARR	MTWRF	ARR
	065	STAFF	ARR	MTWRF	ARR
	066	STAFF	ARR	MTWRF	ARR

COURSE DESCRIPTION	SECT.	INSTRUCTOR	MEETING TIME	BLDG/ROOM	C
4810 SCHOOL LAW	001	MATZNER GERHARD C	1900-2130R	BEB217	03
4820 SCH-COMMUNITY REL	001	MERIGIS HARRY J	1700-1840R	BEB217	02
5600 INTRC ORG & ADM	001	BARTZ DAVID E	1900-2130W	BEB217	04
5630 ADM-SUP ELEM SCH	001	SMITLEY DONALD W	1900-2130T	BEB216	04
5700 SUPV OF INSTR	001	BARTZ DAVID E	1630-1900W	BEB216	03
5800 SCHOOL FINANCE	001	MATZNER GERHARD C	1900-2130T	BEB217	03
5870 PERSONNEL ADMIN	001	SMITLEY DONALD W	1900-2130M	BEB216	03
5910 INTERNSHIP	003	STAFF	ARR	MTWRF	ARR
5920 THESIS	003	STAFF	ARR	MTWRF	ARR
5950 ADM HIGHER ED	001	LUTZ FRANK W	1900-2130R	BEB216	03
5910 FIELD STUDY	001	STAFF	ARR	MTWRF	BEB211
5920 FIELD STUDY	001	STAFF	ARR	MTWRF	BEB211

COURSE DESCRIPTION	SECT.	INSTRUCTOR	MEETING TIME	BLDG/ROOM	C
1000 SCHOOL/SOCIETY	001	BARGER ROBERT N	0930-1045TR	BEB109	03
	002	BARGER ROBERT N	1400-1450MWF	BEB216	03
1450 PHIL/HIST ED	001	GUCKERT JOHN C	0900-0950MWF	BEB216	03
	002	SUTTON KENNETH R	0930-1045TR	BEB205	03
	003	SUTTON KENNETH R	1000-1050MWF	BEB216	03
	004	BARGER ROBERT N	1100-1150MWF	BEB216	03
	005	GUCKERT JOHN C	1230-1345TR	BEB214	03
	006	BARGER ROBERT N	1300-1350MWF	BEB216	03
	007	PIERSON GERALD	1400-1450MWF	BEB217	03
	008	GUCKERT JOHN C	1530-1645TR	BEB216	03
	009	GUCKERT JOHN C	1900-2130R	BEB218	03
1750 INTRO ADULT ED	001	SUTTON KENNETH R	1900-2130T	BEB205	03
	080	GOLSON RONALD E	1900-2130R	CAF8	03
3500 CURRICULUM DEV	001	NORTH JOHN T	1900-2130T	BEB212	03
	002	NORTH JOHN T	1300-1350MWF	BEB217	03
3510 SOC FOUND ED	001	LARSON HARRY R	1900-2130R	BEB212	03
	002	LARSON HARRY R	1900-2130W	BEB212	03
3530 PHIL OF ED	001	SUTTON KENNETH R	1300-1350TR	BEB109	02

Recommended to students as partial fulfillment for general education requirements social studies.
 Restricted enrollment: must have junior or senior standing.
 On-campus--class meets at CAFB.

COURSE DESCRIPTION	SECT.	INSTRUCTOR	MEETING TIME	BLDG/ROOM	C
4900 PRIN/GUIDANCE	001	MGLER DONALD L	1000-1050MWF	AAE308	03
	002	RAWLINS MELANIE	1900-2130M	AAE203	03
4910 ELEM/GUIDANCE	001	OVERTON PAUL D	1600-1830W	AAE308	03
5360 INTRC FAL COUNS	001	CHASE DAYTON K	1900-2130T	BH207	03
5720 MEAS APPL/GUID	001	CRANE WILLIAM J	1900-2130M	AAE308	03
5760 STU PERS/HI ED	001	CRANE WILLIAM J	1900-2130M	AAE308	03
5890 PRAC/PROB IN CSL	001	SALTMARSH ROBERT E	1900-2130R	AAE308	04
5920 CU ED PER SOC IN	001	GREEN CARL K	1900-2130M	AAE202	03
5930 COUNS PRACTICUM	001	OVERTON PAUL D	ARR	MTWRF	AAE304
5990 FIELD STUDY/GUID	001	OVERTON PAUL D	ARR	MTWRF	AAE304

COURSE DESCRIPTION	SECT.	INSTRUCTOR	MEETING TIME	BLDG/ROOM	C
3325 EDU PSYCHOLOGY	001	WARD PAUL L	0900-0950MWF	AAE308	03
	002	WARD GLEN JR	0930-1045TR	AAE308	03
	003	WARD PAUL L	1100-1150MWF	AAE308	03
	004	RAWLINS MELANIE	1230-1345TR	AAE308	03
	005	WARD GLEN JR	1300-1350MWF	AAE308	03
	006	WARD GLEN JR	1400-1450MWF	AAE308	03
	007	SALTMARSH ROBERT E	1500-1550MWF	AAE308	03
	008	SALTMARSH ROBERT E	1600-1830W	AAE308	03
4770 FAC INTER RELAT	001	SMITH MARY M	1900-2130M	AAE207-08	02
4790 STUDIES IN ED	001	GREEN CARL K	1900-2130W	AAE203	03
5400 ADV ED PSYCH	001	WARD PAUL L	1900-2130R	AAE202	03
5520 UNDERSTAND INDIV	002	CRANE WILLIAM J	1100-1150MWF	AAE202	03
	001	GREEN CARL K	1600-1830T	AAE308	03
5710 PSY-SOC DEV ADOL	001	MGLER DONALD L	1900-2130T	AAE308	03
5740 PERS DYNAMICS	001	MGLER DONALD L	1900-2130T	AAE308	03

COURSE DESCRIPTION	SECT.	INSTRUCTOR	MEETING TIME	BLDG/ROOM	C
ELE 1230 LAB IN EDUC	001	CAREY JOSEPH E	0800-0850TR	BEB217	02
	002	CAREY JOSEPH E	0900-0915TR	BEB217	02
	003	MERIGIS HARRY J	0900-0950M	BEB217	02
	004	RCGERS DONALD LEE	1000-1050M	BEB207	02
	005	FLOYD THOMAS W	1100-1150M	BEB217	02
	006	FLOYD THOMAS W	1100-1150TR	BEB217	02
	007	MERIGIS HARRY J	1100-1150M	BEB202	02
	008	SCHENKE LAHRON H	1100-1215TR	BEB202	03
	009	FUST DELBERT D	1200-1250MWF	BEB202	03
	010	FUST DELBERT D	1300-1350MWF	BEB202	03
	011	SCHENKE LAHRON H	1400-1515TR	BEB207	03
	012	SCHENKE LAHRON H	0900-0950MWF	AAE206	03
	013	FUST DELBERT D	0900-0950MWF	BEB207	03
	014	SCHLINSGG GEORGE W	ARR	MTWRF	BEB207
	015	SCHLINSGG GEORGE W	1900-2130T		
	016	DWNS DALE D	1100-1150MTR	BEB203	03
	017	ZABKA ROBERT	1300-1350MTR	BEB207	03
	018	FLCYD THOMAS W	1400-1450MTR	BE202	03
	019	FOUST DELBERT D	1000-1050MTR	BEB217	03

FALL SEMESTER — Page 4

FINANCE	COURSE DESCRIPTION	SECT.	INSTRUCTOR	MEETING TIME	BLDG/ROOM	C
FIN 3710	BUS FIN MGT	002	STANKO BRIAN E	0900-0950MWF	BH300	03
		003	STANKO BRIAN B	1000-1050MWF	BH300	03
		004	NELSON ARLYNN B	1100-1150MWF	BH300	03
		005	STANKO BRIAN B	1200-1250MWF	BH300	03
		006	SHELENS EDMUND	1300-1350MWF	BH300	03
		007	STANKO BRIAN B	1400-1450MWF	BH313	03
		008	WRIGHT SALLY JO	1100-1215TR	BH306	03
		009	WRIGHT SALLY JO	1400-1515TR	BH306	03
		010	NELSON ARLYNN B	1900-2130M	BH300	03
FIN 3720	INVESTMENTS	001	SHELENS EDMUND	1000-1050MWF	BH313	03
		002	SHELENS EDMUND	1500-1550MWF	BH313	03
FIN 3730	FINANCIAL MARKET	001	GOVER TIMOTHY D	1100-1150MWF	BH300	03
		002	GOVER TIMOTHY D	1400-1515TR	BH300	03
FIN 3740	REAL ESTATE	001	NELSON ARLYNN B	1500-1550MWF	BH313	03
FIN 3750	CUMM BANK MGT	001	GOVER TIMOTHY D	1300-1350MWF	BH313	03
		002	GOVER TIMOTHY D	1100-1215TR	BH300	03
FIN 3900	RISK & INSURANCE	001	NELSON ARLYNN B	1400-1450MWF	BH300	03
FIN 4200	SECURITY ANAL	001	WRIGHT SALLY JO	1530-1645TR	BH300	03
FIN 4275	INTERNSHIP/FIN	003	GOVER TIMOTHY D	ARR	MTWRF	ARR
		006	GOVER TIMOTHY D	ARR	MTWRF	ARR
		009	GOVER TIMOTHY D	ARR	MTWRF	ARR
		012	GOVER TIMOTHY D	ARR	MTWRF	ARR
FIN 4820	INTERNAT'L FIN	001	WRIGHT SALLY JO	1300-1350MWF	BH307	03
FIN 4830	CRNT PROB IN FIN	001	SPEICHER DAVID	0930-1045TR	BH307	03

FINE ARTS	COURSE DESCRIPTION	SECT.	INSTRUCTOR	MEETING TIME	BLDG/ROOM	C
FAR 2001	INTRC TO ARTS	001	SILVERMAN DANIEL A	1300-1350MWF	LBI LEC	03
FAR 2002	FN ART/CULT PERS	001	SILVERMAN DANIEL A	1100-1150MWF	LBI LEC	03
FAR 2903	GREAT EXPR ARTS	001	SETTLE PHILLIP	1000-1115TR	FAA302	03
FAR 5000	AESTH STUDIES	001	JAENIKE VAUGHN	1900-2130T	FAM122	03
FAR 5950	THESIS	003	SETTLE PHILLIP	ARR	MTWRF	ARR
		004	SETTLE PHILLIP	ARR	MTWRF	ARR
		005	SETTLE PHILLIP	ARR	MTWRF	ARR

FOREIGN LANGUAGE	COURSE DESCRIPTION	SECT.	INSTRUCTOR	MEETING TIME	BLDG/ROOM	C
FLG 3400	METH TCH FL	001	CARR GERALD F	1000-1050MWF	CH107	03
FLG 3510	CADET TEACHING	001	STAFF	ARR	MTWRF	ARR

FRENCH	COURSE DESCRIPTION	SECT.	INSTRUCTOR	MEETING TIME	BLDG/ROOM	C
FRE 1001	CONV FRE BEG I	001	KELLY LEO L	0900-0950TR	CH103	02
		002	HARRIS STANLEY G	1100-1150TR	CH107	02
		003	SUNDEHEIM L DONALD	1300-1350TR	CH107	02
FRE 1002	CCNV FRE BEG II	001	KELLY LEO L	1000-1050TR	CH107	02
FRE 1101	ELEM FRENCH	001	HARRIS STANLEY G	0900-0950MTRF	CH121	04
		002	SUNDEHEIM L DONALD	1000-1050MTRF	CH121	04
FRE 1102	ELEM FRENCH	001	HARRIS STANLEY G	1200-1250MTRF	CH107	04
FRE 2201	INTER FRENCH	001	SUNDEHEIM L DONALD	0900-0950MTRF	CH107	04
FRE 3300	FRENCH PHONETICS	001	KELLY LEO L	0900-0950MWF	CH103	03
FRE 3304	FRE CIVILIZATION	001	SUNDEHEIM L DONALD	1400-1515TR	CH107	03
FRE 4402	FRENCH NOVEL II	001	HARRIS STANLEY G	1900-2130T	CH106	03

GERMAN	COURSE DESCRIPTION	SECT.	INSTRUCTOR	MEETING TIME	BLDG/ROOM	C
GER 1001	CONV GER BEG I	001	NIESS MARTIN M	1100-1150TR	CH102	02
		002	MULLALLY JOHN E P	1200-1250TR	CH102	02
		003	MULLALLY JOHN E P	1400-1450TR	CH103	02
GER 1002	CONV GER BEG II	001	KCNRAD KARL-LUDWIG	0800-0850TRF	CH102	02
GER 1101	ELEM GERMAN	001	CARR GERALD F	1200-1250MTRF	CH103	04
		002	NIESS MARTIN M	1300-1350MTRF	CH102	04
GER 2201	INTER GERMAN	001	CARR GERALD F	1400-1450MTRF	CH102	04
GER 3301	GER COMP & CONV	001	MULLALLY JOHN E P	1000-1050MTRF	CH102	04
GER 4770	SUR GER LIT I	001	NIESS MARTIN M	1100-1150MWF	CH102	03
		001	MULLALLY JOHN E P	1400-1450MWF	CH103	03

LATIN	COURSE DESCRIPTION	SECT.	INSTRUCTOR	MEETING TIME	BLDG/ROOM	C
LAT 1101	ELEM LATIN	001	KIRBY PAUL F	1000-1050MTRF	CH103	04
LAT 2201	INTER LATIN	001	KIRBY PAUL F	ARR	MTWRF	ARR
LAT 3302	SUR ROM LIT II	001	KIRBY PAUL F	ARR	MTWRF	ARR

SPANISH	COURSE DESCRIPTION	SECT.	INSTRUCTOR	MEETING TIME	BLDG/ROOM	C
SPN 1001	CONV SPN BEG I	001	CLAY MENDEZ LUIS F	1100-1150TR	CH101	02
		002	STAFF	1200-1250TR	CH121	02
		003	CROUSE RICHARD L	1300-1350TR	CH121	02
SPN 1002	CCNV SPN BEG II	001	ORTIZ-MUNIZ G	0800-0850TR	CH101	02
SPN 1101	ELEM SPANISH	001	DULKA RICHARD A	1100-1150MTRF	CH121	04
		002	DULKA RICHARD A	1200-1250MTRF	CH101	04
		003	DULKA RICHARD A	1500-1550MTRF	CH101	04
		004	CROUSE RICHARD L	0800-0850MTRF	CH121	04
SPN 1102	ELEM SPANISH	001	STAFF	1400-1450MTRF	CH101	04
SPN 2201	INTER SPANISH	001	ORTIZ-MUNIZ G	0900-0950MTRF	CH101	04
SPN 2202	INTER SPANISH	001	CROUSE RICHARD L	1000-1050MTRF	CH101	04
SPN 3301	SPN CONV & COMP	001	CROUSE RICHARD L	1100-1150MWF	CH101	03
SPN 3500	SPN SHORT STORY	001	STAFF	1300-1350MWF	CH101	03
SPN 4401	SPN ADV GRAMMAR	001	ORTIZ-MUNIZ G	1230-1345TR	CH106	03
SPN 4403	SPN CULT & CIV	001	ORTIZ-MUNIZ G	0800-0850MWF	CH101	03

GENERAL STUDIES	COURSE DESCRIPTION	SECT.	INSTRUCTOR	MEETING TIME	BLDG/ROOM	C
*GST 1000	READING/STUDY IM	001	BLAIR CYRUS E	0800-0850MTRF	BEE226	02
		002	SANDERS CLAUD D	0900-0950MTRF	BEB226	02
		003	BLAIR CYRUS E	1000-1050MTRF	BEB226	02
		004	BLAIR CYRUS E	1100-1150MTRF	BEE226	02

*Credit does not count toward graduation.

GEOGRAPHY	COURSE DESCRIPTION	SECT.	INSTRUCTOR	MEETING TIME	BLDG/ROOM	C
GEG 1500	WORLD GEOGRAPHY	001	MEYER DOUGLAS K	1100-1150MWF	S332	03
		002	MEYER DOUGLAS K	1400-1450MWF	S332	03
GEG 2020	ANGLC-AMERICA	001	MEYER DOUGLAS K	1000-1050MWF	S330	03
GEG 3580	TECH GEG RES	001	STAFF	0900-0950MWF	S334	03
GEG 3600	ECNOMIC GEOG	001	WISE RICHARD L	1300-1350MWF	S334	03
GEG 3620	AGRIC GEG	001	STAFF	1400-1515TR	S334	03
GEG 3800	CARTOGRAPHY	001	STAFF	1300-1440MWF	S230	04
GEG 3870	CONS NAT RES	001	MCDONALD WALTER H	1100-1150MWF	S334	03

GEOLOGY	COURSE DESCRIPTION	SECT.	INSTRUCTOR	MEETING TIME	BLDG/ROOM	C
GEL 1400	PHYSICAL GEOLOGY	001	WALLACE RONALD G	0900-0950MWF	S236	04
		002	BAHARLOU ALAN	0800-0940T	S236	04
		003	HUNT AMANDA M	1000-1050MWF	S236	04
		004	STRATTON JAMES F	1100-1140T	S236	04
		005	STRATTON JAMES F	1200-1250MWF	S236	04
		006	STRATTON JAMES F	1200-1340R	S236	04
GEL 2430	HISTORICAL GEOL	001	WALLACE RONALD G	1300-1440MWF	S232	03
GEL 2440	MINERALOGY	001	AMOS DEWEY	0800-0850M	S142	03
		002	STAFF	1400-1515TR	S334	03
GEL 3420	PRIN OF GEOMORPH	001	WALLACE RONALD G	1000-1140TR	S232	03
GEL 3460	ECONOMIC GEOLOGY	001	AMOS DEWEY	1300-1350MWF	S142	03
		002	STAFF	1500-1640M	S138	03
GEL 3480	ENERGY RESOURCES	001	HUNT AMANDA M	1500-1640M	S138	03
GEL 3490	CGAL GEOLOGY	001	AMOS DEWEY	0800-0940TR	S138	03
GEL 4470	SEDIMENTATION	001	HUNT AMANDA M	1200-1340TR	S138	03
GEL 4490	PALEONTOLOGY	001	STRATTON JAMES F	1000-1050M	S232	03
		002	STAFF	1000-1140F	S232	03

HEALTH EDUCATION	COURSE DESCRIPTION	SECT.	INSTRUCTOR	MEETING TIME	BLDG/ROOM	C
HED 1200	PERSONAL HEALTH	001	KAMMERMANN SANDRA K	1900-2040M	S332	02
		002	STAFF	1000-1140T	S332	02
		003	KAMMERMANN SANDRA K	1200-1340T	S332	02
		004	DOYLE KATHLEEN	1400-1540T	S332	02
		005	STAFF	1900-2040T	S332	02
		006	DOYLE KATHLEEN	1900-2040T	S332	02
		007	STAFF	1000-1140R	S332	02
		008	STAFF	1400-1540R	S332	02
		009	KAMMERMANN SANDRA K	1300-1350M	L8170	02
		010	STAFF	1500-1550M	L8170	02
		011	DOYLE KATHLEEN	1000-1050M	L8170	02
		012	DOYLE KATHLEEN	1200-1250M	L8170	02
		013	STAFF	0800-0850TR	L8169	02
		014	STAFF	1100-1150TR	L8169	02
		015	STAFF	1200-1250TR	L8169	02
		016	STAFF	1400-1450M	L8170	02
		017	STAFF	1600-1650M	L8170	02
		018	WILSON GILBERT E	1400-1450TR	L8169	02
		019	WILSON GILBERT E	1500-1550TR	L8169	02
		020	WILSON GILBERT E	1600-1650TR	L8169	02
		021	HCOSEY RICHARD L	0800-0850M	L8170	02
		022	HCOSEY RICHARD L	0900-0950M	L8170	02
		001	WILSON GILBERT E	0800-0850M	L8165	02
		002	WILSON GILBERT E	1000-1050M	L8165	02
		003	WILSON GILBERT E	1100-1150M	L8165	02
		004	WILSON GILBERT E	1300-1350M	L8165	02
		005	HCOSEY RICHARD L	1400-1450M	L8165	02
		006	SEXTON CARL N	1500-1550M	L8165	02
		007	DOYLE KATHLEEN	0900-0950TR	L8165	02
		008	SEXTON CARL N	0900-0950M	L8165	02
HED 1320	FIRST AID	001	KAMMERMANN SANDRA K	1900-2040M	S332	02
		002	STAFF	1000-1140T	S332	02
		003	KAMMERMANN SANDRA K	1200-1340T	S332	02
		004	DOYLE KATHLEEN	1400-1540T	S332	02
		005	STAFF	1900-2040T	S332	02
		006	DOYLE KATHLEEN	1900-2040T	S332	02
		007	STAFF	1000-1140R	S332	02
		008	STAFF	1400-1540R	S332	02
		009	KAMMERMANN SANDRA K	1300-1350M	L8170	02
		010	STAFF	1500-1550M	L8170	02
		011	DOYLE KATHLEEN	1000-1050M	L8170	02
		012	DOYLE KATHLEEN	1200-1250M	L8170	02
		013	STAFF	0800-0850TR	L8169	02

INDUSTRIAL TECHNOLOGY				
COURSE DESCRIPTION	SECT.	INSTRUCTOR	MEETING TIME	BLDG/ROOM R.
1043 ENG GRAPHICS	001	WATSON CHARLES W	0800-0940M	AAE315 03
	002	COLEMAN WAYNE D	1000-1140M	AAE315 03
	003	WATSON CHARLES W	1300-1440M	AAE315 03
3003 IND MECHANICS	001	COLEMAN WAYNE D	1300-1350M	AAE218 03
3043 ENG GEO/GRAPHICS	001	WATSON CHARLES W	0800-0940M	AAE315 03
4002 MAT TESTING	001	COLEMAN WAYNE D	1000-1140M	AAE218 02
4274 INDUS ELEC	001	MESSER JOHN M	1000-1140M	AAE219 04
4275 INDUS INTERN	005	STAFF	ARR	MTWRF 05

INSTRUCTIONAL MEDIA				
COURSE DESCRIPTION	SECT.	INSTRUCTOR	MEETING TIME	BLDG/ROOM R.
2870 IM/PUB SCHOOLS	001	STAFF	1400-1515TR	BBE139 03
4870 INTRC/INSTR MED	001	LANDSAW FLOYD	1600-1830T	BBE139 03
5200 TV IN EDUCATION	001	WISEMAN ROBERT C	1900-2130M	BBE139 03
5220 PHOTC IN INS MED	001	WISEMAN ROBERT C	1900-2130T	BBE139 03
6100 MP PHOTO IN IM	001	LANDSAW FLOYD	1900-2130M	BBE139 04

JOURNALISM				
COURSE DESCRIPTION	SECT.	INSTRUCTOR	MEETING TIME	BLDG/ROOM R.
2100 INTRC JOURNALISM	001	STAFF	0800-0850M	BH313 03
	002	STAFF	1000-1050M	BH313 03
	003	STAFF	1300-1350M	MG106 03
	004	STAFF	1400-1450M	MG106 03
	005	STAFF	1230-1345TR	BH313 03
	006	STAFF	1900-2130M	CH203 03
2101 NEWSWRITING I	001	SHARP MAX A	0900-0950M	SSB207 03
	002	SHARP MAX A	0900-1040R	SSE207 03
	003	SHARP MAX A	1100-1240R	SSE207 03
	004	SHARP MAX A	1300-1350M	SSB207 03
	005	SHARP MAX A	1400-1540R	SSB207 03
2102 NEWSWRITING II	001	THORNBERGH DANIEL E	1000-1050M	SSB207 03
	002	THORNBERGH DANIEL E	0900-0950M	BH207 03
3001 NEWS PHOTOGRAPHY	001	HODGES THOMAS E JR	0800-0940TR	SSB207 03
	002	HODGES THOMAS E JR	1000-1140TR	SSB207 03
3100 NEWS EDITING	001	STAFF	0800-0850M	SSE207 03
	002	STAFF	1200-1250M	SSE207 03
3101 COMMUNICATN LAW	001	THORNBERGH DANIEL E	1400-1450M	SSB207 03
3102 FEATURE WRITING	001	STAFF	1500-1550TR	SSE207 02
	002	STAFF	1900-2040T	CH102 02
	003	STAFF	1900-2130T	SSE207 03
3201 ETHICS	001	TEITSWORTH K ANNE	1000-1050M	BH207 03
3820 PUBLICITY METHOD	001	TEITSWORTH K ANNE	1400-1450M	CH337 03
	002	TEITSWORTH K ANNE	0800-0850M	BH205 03
4275 INTEFN (COMM)	001	THORNBERGH DANIEL E	ARR	MTWRF 01
	002	REED JOHN D	ARR	MTWRF 01
4501 ADVERTISING	001	STAFF	1900-2130M	SSE207 03
4900 SEM/ADV PHO JOU	001	HODGES THOMAS E JR	1400-1450M	BH207 03

JUNIOR HIGH SCHOOL EDUCATION				
COURSE DESCRIPTION	SECT.	INSTRUCTOR	MEETING TIME	BLDG/ROOM R.
3130 TCH SS6LA/JHS	001	WHITE RICHARD	1300-1440TR	BBE226 03
4280 TCH READ/SEC SCH	001	MACLAREN FREDRICK W	1300-1440M	BBE226 03

LIBRARY SCIENCE				
COURSE DESCRIPTION	SECT.	INSTRUCTOR	MEETING TIME	BLDG/ROOM R.
1200 LIBRARY USE	001	LAWSON RICHARD W	0900-0950TR	L71 02
	002	LAWSON RICHARD W	1000-1050TR	L71 02
3300 LIT FOR CHILDREN	001	LAWSON RICHARD W	1000-1050M	L71 03
4750 REF MAT*LS/SERV	001	LAWSON RICHARD W	1600-1830R	L71 03

LIFE SCIENCE				
COURSE DESCRIPTION	SECT.	INSTRUCTOR	MEETING TIME	BLDG/ROOM R.
1000 LIFE SCIENCE	001	STAFF	0800-0850R	AAE106 03
	002	STAFF	0800-0850R	AAE108 03
	003	STAFF	0800-0850R	AAE204 03
	004	STAFF	0800-0850R	LSA226 03
	005	STAFF	0800-0850R	LS325 03
	006	STAFF	0900-0950R	AAE106 03
	007	STAFF	0900-0950R	AAE108 03
	008	STAFF	0900-0950R	AAE204 03
	009	STAFF	0900-0950R	LSA226 03
	010	STAFF	0900-0950R	LS325 03
	011	STAFF	1000-1050R	AAE106 03
	012	STAFF	1000-1050R	AAE108 03
	013	STAFF	1000-1050R	AAE204 03
	014	STAFF	1000-1050R	LSA226 03
	015	STAFF	1000-1050R	LS325 03
	016	STAFF	1100-1150R	AAE106 03
	017	STAFF	1100-1150R	AAE108 03
	018	STAFF	1100-1150R	AAE204 03
	019	STAFF	1100-1150R	LSA226 03
	020	STAFF	1100-1150R	LS325 03
	021	STAFF	1200-1250R	AAE106 03
	022	STAFF	1200-1250R	AAE108 03
	023	STAFF	1200-1250R	AAE204 03
	024	STAFF	1200-1250R	LSA226 03
	025	STAFF	1200-1250R	LS325 03
	026	STAFF	1300-1350R	AAE106 03
	027	STAFF	1300-1350R	AAE108 03
	028	STAFF	1300-1350R	AAE204 03
	029	STAFF	1300-1350R	LSA226 03
	030	STAFF	1300-1350R	LS325 03
	031	STAFF	1400-1450R	AAE106 03
	032	STAFF	1400-1450R	AAE108 03
	033	STAFF	1400-1450R	AAE204 03
	034	STAFF	1400-1450R	LSA226 03
	035	STAFF	1400-1450R	LS325 03
	036	STAFF	1500-1550R	AAE106 03
	037	STAFF	1500-1550R	AAE108 03
	038	STAFF	1500-1550R	AAE204 03
	039	STAFF	1500-1550R	LSA226 03
	040	STAFF	1500-1550R	LS325 03
	041	STAFF	1600-1650R	AAE106 03
	042	STAFF	1600-1650R	AAE108 03
	043	STAFF	1600-1650R	AAE204 03
	044	STAFF	1600-1650R	LSA226 03
	045	STAFF	1600-1650R	LS325 03
	046	STAFF	0800-0850F	AAE106 03
	047	STAFF	0800-0850F	AAE108 03
	048	STAFF	0800-0850F	AAE204 03
	049	STAFF	0900-0950F	AAE106 03
	050	STAFF	0900-0950F	AAE108 03
	051	STAFF	0900-0950F	AAE204 03
	052	STAFF	0900-0950F	LS325 03
	053	STAFF	1000-1050F	AAE106 03
	054	STAFF	1000-1050F	AAE108 03
	055	STAFF	1000-1050F	AAE204 03
	056	STAFF	1000-1050F	LS325 03
	057	STAFF	1100-1150F	AAE106 03
	058	STAFF	1100-1150F	AAE108 03
	059	STAFF	1100-1150F	AAE204 03
	060	STAFF	0800-0850F	LS325 03
	061	STAFF	1200-1250F	AAE106 03
	062	STAFF	1200-1250F	AAE108 03
	063	STAFF	1200-1250F	AAE204 03
	064	STAFF	1200-1250F	LSA226 03
	065	STAFF	1300-1350F	AAE106 03
	066	STAFF	1300-1350F	AAE108 03
	067	STAFF	1300-1350F	AAE204 03
	068	STAFF	1300-1350F	LSA226 03
	069	STAFF	1400-1450F	AAE106 03
	070	STAFF	1400-1450F	AAE108 03
	071	STAFF	1400-1450F	AAE204 03
	072	STAFF	1400-1450F	LSA226 03
	073	STAFF	1900-1950R	AAE228 03
	074	STAFF	1900-1950R	LS317 03
	075	STAFF	1900-1950R	LSA226 03
	076	STAFF	1500-1640M	LS119 03

2010 ENVIRON BIOLOGY	001	HUNT LAWRENCE B	0900-0950M	LS201 03
	002	HUNT LAWRENCE B	0930-1045TR	LS201 03
	003	STAFF	1900-2015TR	LS301 03
3000 SEMINAR ENV BIOL	001	STAFF	ARR	MTWRF 01
3200 GENETICS	001	BAUMGARDNER KANDY D	0900-0950M	LS301.228 03
	002	BAUMGARDNER KANDY D	0900-1040M	LS301.228 03
	003	BAUMGARDNER KANDY D	0900-0950M	LS301.228 03
	004	BAUMGARDNER KANDY D	1100-1240M	LSA228 03
	005	BAUMGARDNER KANDY D	1400-1450M	LSA228 03
3400 METHODS	001	MURPHY DAVID H	0800-0850M	LSA226 03
4275 INTERNSHIP	012	HUNT LAWRENCE B	ARR	MTWRF 12
4750 BIOMETRICS	001	KRUSE KIPP C	1100-1150M	LS325 03
	002	STAFF	1100-1240M	ARR
5080 GRAD INTERNSHIP	006	DURHAM LEONARD	ARR	MTWRF 06
5100 GRAD STUDY/RES	001	ANDREWS RICHARD D	1400-1450TR	LS119 02
5150 ADV GRAD SEMINAR	001	HUNT LAWRENCE B	1100-1150TR	LS228 03
5950 THESIS	003	STAFF	ARR	MTWRF 03
	004	STAFF	ARR	MTWRF 04
	005	STAFF	ARR	MTWRF 05
	006	STAFF	ARR	MTWRF 06

MANAGEMENT				
COURSE DESCRIPTION	SECT.	INSTRUCTOR	MEETING TIME	BLDG/ROOM R.
2460 BUSINESS LAW I	001	HOLLEY BERTRAND P	0800-0850M	CH120 03
	002	HOLLEY BERTRAND P	0900-0950M	CH120 03
	003	STAFF	0800-0915TR	CH120 03
	004	HOLLEY BERTRAND P	1300-1345TR	CH120 03
	005	STAFF	1230-1345TR	S222 03

MGT 2810 BUS STAT I	001	MEIER ROBERT E	0800-0850M	CH318 03
	002	STAFF	0900-0950M	BBE214 03
	003	STAFF	1200-1250M	CH210 03
	004	STAFF	1200-1230T	CH210 03
	005	STAFF	0930-1045TR	AAE316 03
	006	STAFF	1230-1345TR	CH210 03
	007	PIPER WILLIAM S	1400-1450M	AAE207-08 03
	008	HAYES HOYT	1900-2130R	CH120 03
MGT 3010 MGT & ORG BEH	002	GIFFIN JAMES F	1100-1215TR	CH120 03
	003	GIFFIN JAMES F	0930-1045TR	CH120 03
	004	STAFF	1200-1515TR	CH120 03
	005	PIPER WILLIAM S	1200-1250M	LS301 03
MGT 3450 PERSONNEL MGT	001	ROBERTS JOHN LINCOLN	1100-1150M	CH318 03
	002	ROBERTS JOHN LINCOLN	1400-1450M	CH318 03
	003	ROBERTS JOHN LINCOLN	0900-0950M	CH232 03
MGT 3470 BUSINESS LAW II	001	STAFF	0900-0950M	L18 LEC 03
	002	STAFF	0930-1045TR	AAE207-08 03
MGT 3800 INTRC TO OP RES	001	LHRASBI ARDESHIR	1100-1215TR	CH232 03
	002	LHRASBI ARDESHIR	1530-1645TR	CH232 03
	003	LHRASBI ARDESHIR	1900-2130T	CH232 03
	004	PIPER WILLIAM S	1300-1350M	LS201 03
MGT 3820 BUS STAT II	001	MEIER ROBERT E	0900-0950M	CH318 03
MGT 3830 BUS REPORT WRITG	001	GGLESBY MARILYN S	0930-1045TR	CH318 03
	002	GGLESBY MARILYN S	1100-1215TR	CH210 03
	003	SULLIVAN ROBERT N	1100-1450M	BH306 03
	004	GGLESBY MARILYN S	1400-1515TR	CH109 03
	005	SANDERS ROSANNE B	1300-1350M	S108 03
	006	CAMPBELL BETTY JANE	0900-0950M	MG137 03
	007	CAMPBELL BETTY JANE	1100-1150M	CH109 03
MGT 3950 OPERATIONS MGT	001	STAFF	1000-1050M	CH210 03
	002	STAFF	1300-1350M	CH318 03
	003	STAFF	1500-1550M	CH318 03
	004	STAFF	0900-0950M	AAE207-08 03
	005	STAFF	0930-1045TR	CH232 03
	006	STAFF	1100-1215TR	AAE207-08 03
MGT 4275 INTERNSHIP	0			

FALL SEMESTER — Page 6

MEDICAL TECHNOLOGY				
COURSE DESCRIPTION	SECT.	INSTRUCTOR	MEETING TIME	BLDG/ROOM C.
*MOT 2600 INTRC MED TECH	001	ALEXANDER HERBERT	JR1800-2030R	LS310 02
*MOT 3000 ADV MED TECH	001	ALEXANDER HERBERT	JR1800-2030T	LS310 02

*Restricted enrollment. Prior approval is required for registration in these courses.

MILITARY SCIENCE				
COURSE DESCRIPTION	SECT.	INSTRUCTOR	MEETING TIME	BLDG/ROOM C.
MSI 1001 INTRC MIL SCI	001	STAFF	1500-1550MW	AAE31c 01
MSI 2001 MIL INSTRUCTION	001	STAFF	1600-1650MW	AAE217 01
MSI 3001 MIL LEADERSHIP	001	STAFF	1500-1640MW	AAE108 03

MUSIC				
COURSE DESCRIPTION	SECT.	INSTRUCTOR	MEETING TIME	BLDG/ROOM C.
*MUS 0010 VOICE	001	STAFF	ARR	MTWRF FAM011 01
	002	STAFF	ARR	MTWRF FAM011 02
	004	STAFF	ARR	MTWRF FAM011 04
*MUS 0020 FLUTE	001	SNYDER ROBERT C	ARR	MTWRF FAM29 01
	002	SNYDER ROBERT C	ARR	MTWRF FAM29 02
	004	SNYDER ROBERT C	ARR	MTWRF FAM29 04
*MUS 0021 OBOE	001	MARTIN JOSEPH	ARR	MTWRF FAM116 01
	002	MARTIN JOSEPH	ARR	MTWRF FAM116 02
	004	MARTIN JOSEPH	ARR	MTWRF FAM116 04
*MUS 0022 CLARINET	001	BARTA RICHARD J	ARR	MTWRF FAM30 01
	002	BARTA RICHARD J	ARR	MTWRF FAM30 02
	004	BARTA RICHARD J	ARR	MTWRF FAM30 04
*MUS 0023 BASSOON	001	WEIDNER ROBERT W	ARR	MTWRF FAM226 01
	002	WEIDNER ROBERT W	ARR	MTWRF FAM226 02
	004	WEIDNER ROBERT W	ARR	MTWRF FAM226 04
*MUS 0024 SAXOPHONE	001	MARTIN JOSEPH	ARR	MTWRF FAM116 01
	002	MARTIN JOSEPH	ARR	MTWRF FAM116 02
	004	MARTIN JOSEPH	ARR	MTWRF FAM116 04
*MUS 0025 RECORDER	001	WEIDNER ROBERT W	ARR	MTWRF FAM226 01
	002	WEIDNER ROBERT W	ARR	MTWRF FAM226 02
	004	WEIDNER ROBERT W	ARR	MTWRF FAM226 04
*MUS 0030 TRUMPET	001	HILLYER HAROLD L	ARR	MTWRF FAM24 01
	002	HILLYER HAROLD L	ARR	MTWRF FAM24 02
	004	HILLYER HAROLD L	ARR	MTWRF FAM24 04
*MUS 0031 HORN	001	HARDIN BURTON ERVIN	ARR	MTWRF FAM25 01
	002	HARDIN BURTON ERVIN	ARR	MTWRF FAM25 02
	004	HARDIN BURTON ERVIN	ARR	MTWRF FAM25 04
*MUS 0032 TROMBONE	001	HORNEY ALLAN LEE	ARR	MTWRF FAM26 01
	002	HORNEY ALLAN LEE	ARR	MTWRF FAM26 02
	004	HORNEY ALLAN LEE	ARR	MTWRF FAM26 04
*MUS 0033 BARITONE	001	HORNEY ALLAN LEE	ARR	MTWRF FAM26 01
	002	HORNEY ALLAN LEE	ARR	MTWRF FAM26 02
	004	HORNEY ALLAN LEE	ARR	MTWRF FAM26 04
*MUS 0034 TUBA	001	HARDIN BURTON ERVIN	ARR	MTWRF FAM25 01
	002	HARDIN BURTON ERVIN	ARR	MTWRF FAM25 02
	004	HARDIN BURTON ERVIN	ARR	MTWRF FAM25 04
*MUS 0040 PERCUSSION	001	LANE JOHNNY	ARR	MTWRF FAM52 01
	002	LANE JOHNNY	ARR	MTWRF FAM52 02
	004	LANE JOHNNY	ARR	MTWRF FAM52 04
*MUS 0050 VIOLIN	001	TARVIN RONALD	ARR	MTWRF FAM241 01
	002	TARVIN RONALD	ARR	MTWRF FAM241 02
	004	TARVIN RONALD	ARR	MTWRF FAM241 04
*MUS 0051 VIOLA	001	TARVIN RONALD	ARR	MTWRF FAM241 01
	002	TARVIN RONALD	ARR	MTWRF FAM241 02
	004	TARVIN RONALD	ARR	MTWRF FAM241 04
*MUS 0052 VIOLONCELLO	001	TRACY DONALD C	ARR	MTWRF FAM117 01
	002	TRACY DONALD C	ARR	MTWRF FAM117 02
	004	TRACY DONALD C	ARR	MTWRF FAM117 04
*MUS 0053 STRING BASS	001	TRACY DONALD C	ARR	MTWRF FAM117 01
	002	TRACY DONALD C	ARR	MTWRF FAM117 02
	004	TRACY DONALD C	ARR	MTWRF FAM117 04
*MUS 0060 PIANO	001	STAFF	ARR	MTWRF FAM204 01
	002	STAFF	ARR	MTWRF FAM204 02
	004	STAFF	ARR	MTWRF FAM204 04
*MUS 0061 ORGAN	001	ZWICKY GARY L	ARR	MTWRF FAM204 01
	002	ZWICKY GARY L	ARR	MTWRF FAM204 02
	004	ZWICKY GARY L	ARR	MTWRF FAM204 04
*MUS 0062 HARP/SICHOARD	001	ZWICKY GARY L	ARR	MTWRF FAM204 01
	002	ZWICKY GARY L	ARR	MTWRF FAM204 02
	004	ZWICKY GARY L	ARR	MTWRF FAM204 04
*MUS 0070 COMPGS ITION	001	HESTERMAN PETER D	ARR	MTWRF FAM35 01
	002	HESTERMAN PETER D	ARR	MTWRF FAM35 02
	004	HESTERMAN PETER D	ARR	MTWRF FAM35 04
MUS 0100 ENS:BRND	001	HILLYER HAROLD L	1500-1550MWF	FAM112 01
MUS 0110 ENS:GRCH	001	TARVIN RONALD	1600-1650TR	FAM112 01
MUS 0120 ENS:JAZZ BAND	001	HORNEY ALLAN LEE	1200-1250MTR	FAM013 01
MUS 0300 ENS:CHORUS	001	BRINKMAN JAMES M	1400-1450MTR	FAM013 02
MUS 0541 INTRC TO THEORY	001	KREMBIEL JAMES W	1000-1050MWF	FAM013 02
	002	KREMBIEL JAMES W	1300-1350MWF	FAM006 02
	003	AULABAUGH ALAN R	1300-1350MWF	FAM006 02
	001	STAFF	ARR	MTWRF ARR 01
MUS 0600 ENS:CHAMBER	001	HESTERMAN PETER D	1600-1650M	FAM31 01
MUS 1070 ELECTRONIC TECH	001	ROBERTSON JAMES H	1900-1950TH	FAM013 01
MUS 1101 BEGINNING GUITAR	002	ROBERTSON JAMES H	1000-1050MWF	FAM013 01
	001	MARTIN JOSEPH	1500-1550T	FAM103 00
MUS 1103 RECITAL	001	MARTIN JOSEPH	1500-1550T	FAM103 00
MUS 1136 CL INSTR VOICE	001	MAHARG JOEHN N	0900-0950MTR	FAM013 02
	002	SIMON DELBERT R	1300-1350MTR	FAM013 02
MUS 1201 BEGINNING PIANO	001	APPLEBY DAVID	1200-1250TR	FAM229 01
	002	APPLEBY DAVID	1400-1450TR	FAM229 01
	003	SANDERS GEORGE P	1400-1450TR	FAM230 01
*MUS 1203 PIANO SKILLS	001	KOWALCHYK GAYLE	1000-1050TR	FAM229 01
	002	SANDERS GEORGE P	1600-1650TR	FAM229 01
*MUS 1204 PIANO SKILLS	001	ZWICKY GARY L	0900-0950TR	FAM230 01
	002	SANDERS GEORGE P	1100-1150TR	FAM229 01
MUS 1301 CL INSTR STRINGS	001	TRACY DONALD C	0900-0950MWF	FAM112 01
MUS 1302 CL INSTR CL FL SX	001	SNYDER ROBERT C	1000-1050TR	FAM112 01
MUS 1303 CL INSTR OB BSN	001	BARTA RICHARD J	0900-0950TR	FAM112 01
MUS 1304 CL INSTR PERC	001	LANE JOHNNY	1200-1250TR	FAM112 01
MUS 1305 CL INSTR TRPT HN	001	HARDIN BURTON ERVIN	1300-1350TR	FAM112 01
MUS 1306 CL INSTR TRB TU	001	HORNEY ALLAN LEE	1000-1050MWF	FAM112 01
MUS 1421 MUS FUNDAMENTALS	001	DIBIANCO DOUGLAS	0800-0850MWF	FAM224 03
	002	KEY RHODERICK E	0900-0950MWF	FAM224 03
	003	BIALEK MARY ANN	1100-1150MWF	FAM224 03
	004	ROBERTSON JAMES H	1400-1450MWF	FAM224 03
	005	RODKE ANGLA	1000-1050MWF	FAM224 03
MUS 1423 MUS FOR REC MAJ	001	ROBERTSON JAMES H	1500-1550MWF	FAM007 02
MUS 1542 MUSICAL THEORY/LIT	001	AULABAUGH ALAN R	1400-1450TR	FAM229 01
MUS 1543 AURAL TRAINING	001	KREMBIEL JAMES W	1000-1050TR	FAM224 01
	002	AULABAUGH ALAN R	1100-1150TR	FAM224 01
MUS 1544 AURAL TRAINING	001	AULABAUGH ALAN R	1300-1350TR	FAM31 01
MUS 2141 VOCAL CONDUCT I	001	JHNSON JUNE	1200-1250TR	FAM007 02
MUS 2155 CHORAL CONDUCT	001	SNYDER ROBERT ELLIS	1100-1150TR	FAM007 02
MUS 2201 CL INSTR PIANO	001	KOWALCHYK GAYLE	1200-1250TR	FAM229 01
*MUS 2203 PIANO SKILLS	001	KOWALCHYK GAYLE	1300-1350TR	FAM229 01
	002	APPLEBY DAVID	1300-1350TR	FAM229 01
*MUS 2204 PIANO SKILLS	001	ZWICKY GARY L	1000-1050MWF	FAM229 01
*MUS 2205 KEYBD SKILLS I	001	KOWALCHYK GAYLE	0800-0850TR	FAM229 01
MUS 2360 INSTRUMENT COND	001	EARTA RICHARD J	1100-1150TR	FAM112 01
	002	KEY RHODERICK E	1100-1150TR	FAM013 01
MUS 2440 LAB IN MUS ED	001	RODKE ANGLA	0900-0950TR	FAM006 01
	002	ADLBAUGH ANLA R	0900-0950TR	FAM31 02
MUS 2542 MUSIC THEORY	001	HESTERMAN PETER D	1200-1250MWF	FAM31 02
MUS 2543 AURAL TRAINING	001	KREMBIEL JAMES W	0800-0850MWF	FAM31 03
	002	AULABAUGH ALAN R	0900-0950TR	FAM31 01
MUS 2561 ROLE BLACK MUSIC	002	AULABAUGH ALAN R	1200-1250TR	FAM31 01
MUS 2562 INTRO MUS LIT	001	LANE JOHNNY	1000-1050TR	FAM122 02
	002	TRACY DONALD C	1400-1450TR	FAM122 02
	003	DIBIANCO DOUGLAS	1100-1150MWF	FAM122 03
MUS 2563 MUS HIST NON MAJ	001	TRACY DONALD C	1300-1350MWF	FAM122 03
MUS 2580 HIST LIT MUS	001	TRACY DONALD C	1300-1350MWF	FAM122 03
MUS 3120 MUS THEATRE WKSP	001	SANDERS KAREN	1500-1640M	FAM013 02
MUS 3221 PIANO PEDAGOGY	001	SANDERS KAREN	0900-0950MWF	FAM210 03
*MUS 3310 VOICE	001	STAFF	ARR	MTWRF FAM011 01
	002	STAFF	ARR	MTWRF FAM011 02
	004	STAFF	ARR	MTWRF FAM011 04
*MUS 3320 FLUTE	001	SNYDER ROBERT C	ARR	MTWRF FAM29 01
	002	SNYDER ROBERT C	ARR	MTWRF FAM29 02
	004	SNYDER ROBERT C	ARR	MTWRF FAM29 04
*MUS 3321 OBOE	001	MARTIN JOSEPH	ARR	MTWRF FAM116 01
	002	MARTIN JOSEPH	ARR	MTWRF FAM116 02
	004	MARTIN JOSEPH	ARR	MTWRF FAM116 04
*MUS 3322 CLARINET	001	BARTA RICHARD J	ARR	MTWRF FAM30 01
	002	BARTA RICHARD J	ARR	MTWRF FAM30 02
	004	BARTA RICHARD J	ARR	MTWRF FAM30 04
*MUS 3323 BASSOON	001	WEIDNER ROBERT W	ARR	MTWRF FAM226 01
	002	WEIDNER ROBERT W	ARR	MTWRF FAM226 02
	004	WEIDNER ROBERT W	ARR	MTWRF FAM226 04
*MUS 3324 SAXOPHONE	001	MARTIN JOSEPH	ARR	MTWRF FAM116 01
	002	MARTIN JOSEPH	ARR	MTWRF FAM116 02
	004	MARTIN JOSEPH	ARR	MTWRF FAM116 04
*MUS 3325 RECORDER	001	WEIDNER ROBERT W	ARR	MTWRF FAM226 01
	002	WEIDNER ROBERT W	ARR	MTWRF FAM226 02
	004	WEIDNER ROBERT W	ARR	MTWRF FAM226 04
*MUS 3330 TRUMPET	001	HILLYER HAROLD L	ARR	MTWRF FAM24 01
	002	HILLYER HAROLD L	ARR	MTWRF FAM24 02
	004	HILLYER HAROLD L	ARR	MTWRF FAM24 04
*MUS 3331 HORN	001	HARDIN BURTON ERVIN	ARR	MTWRF FAM25 01
	002	HARDIN BURTON ERVIN	ARR	MTWRF FAM25 02
	004	HARDIN BURTON ERVIN	ARR	MTWRF FAM25 04
*MUS 3332 TROMBONE	001	HORNEY ALLAN LEE	ARR	MTWRF FAM26 01
	002	HORNEY ALLAN LEE	ARR	MTWRF FAM26 02
	004	HORNEY ALLAN LEE	ARR	MTWRF FAM26 04
*MUS 3333 BARITONE	001	HORNEY ALLAN LEE	ARR	MTWRF FAM26 01
	002	HORNEY ALLAN LEE	ARR	MTWRF FAM26 02
	004	HORNEY ALLAN LEE	ARR	MTWRF FAM26 04
*MUS 3334 TUBA	001	HARDIN BURTON ERVIN	ARR	MTWRF FAM25 01
	002	HARDIN BURTON ERVIN	ARR	MTWRF FAM25 02
	004	HARDIN BURTON ERVIN	ARR	MTWRF FAM25 04
*MUS 3340 PERCUSSION	001	LANE JOHNNY	ARR	MTWRF FAM52 01
	002	LANE JOHNNY	ARR	MTWRF FAM52 02
	004	LANE JOHNNY	ARR	MTWRF FAM52 04
*MUS 3350 VIOLIN	001	TARVIN RONALD	ARR	MTWRF FAM241 01
	002	TARVIN RONALD	ARR	MTWRF FAM241 02
	004	TARVIN RONALD	ARR	MTWRF FAM241 04
*MUS 3351 VIOLA	001	TARVIN RONALD	ARR	MTWRF FAM241 01
	002	TARVIN RONALD	ARR	MTWRF FAM241 02
	004	TARVIN RONALD	ARR	MTWRF FAM241 04
*MUS 3352 VIOLONCELLO	001	TRACY DONALD C	ARR	MTWRF FAM117 01
	002	TRACY DONALD C	ARR	MTWRF FAM117 02
	004	TRACY DONALD C	ARR	MTWRF FAM117 04

*MUS 3353 STRING BASS	001	TRACY DONALD C	ARR	MTWRF FAM117 01
	002	ZWICKY GARY L	ARR	MTWRF FAM117 02
	004	STAFF	ARR	MTWRF FAM117 04
*MUS 3360 PIANO	001	STAFF	ARR	MTWRF FAM205 01
	002	STAFF	ARR	MTWRF FAM205 02
	004	STAFF	ARR	MTWRF FAM205 04
*MUS 3361 ORGAN	001	ZWICKY GARY L	ARR	MTWRF FAM204 01
	002	ZWICKY GARY L	ARR	MTWRF FAM204 02
	004	ZWICKY GARY L	ARR	MTWRF FAM204 04
*MUS 3362 HARP/SICHOARD	001	ZWICKY GARY L	ARR	MTWRF FAM204 01
	002	ZWICKY GARY L	ARR	MTWRF FAM204 02
	004	ZWICKY GARY L	ARR	MTWRF FAM204 04
*MUS 3370 COMPGS ITION	001	HESTERMAN PETER D	ARR	MTWRF FAM35 01
	002	HESTERMAN PETER D	ARR	MTWRF FAM35 02
	004			

PED 1850	SELF DEFENSE	001 HYNDMAN SCHELLAS W	0900-0950M	LB/AR	01
PED 1870	TENNIS	001 CHURCH L	0800-0900M	LB/FH	01
		002 ANKENBRAND LARRY J	1000-1050M	LB/FH	01
		003 GREEN NORMA C	1100-1240TR	LB/FH	01
		004 DAVES M MARISE	1400-1450M	LB/FH	01
		005 MCFARLAND HARLAND G	0800-0940TR	LB/FH	01
		006 FLOWER M LORRAINE	1300-1440M	LB/FH	01
PED 1880	FENCING	001 FLOWER M LORRAINE	1000-1050M	LB/NB	01
		002 FLOWER M LORRAINE	1100-1150M	LB/NB	01
PED 1920	BALLROOM DANCE	001 YU MARINA SU-CHIN	0900-0950M	LB/NB	01
		002 MCFARLAND HARLAND G	1100-1150TR	LB/NB	01
		003 YU MARINA SU-CHIN	1300-1350TR	LB/NB	01
		004 MCFARLAND HARLAND G	1300-1350M	LB/NB	01
		005 MCFARLAND HARLAND G	1400-1450M	LB/NB	01
PED 1930	SQUARE DANCE/Women	001 HUSSEY ROBERT W	1400-1450M	MG/SG	01
	/Men	002 HUSSEY ROBERT W	1400-1450M	MG/SG	01
PED 2000	TECH/PRACTICE PE	001 MCFARLAND HARLAND G	1300-1350TR	LS301	01
PED 2101	T/TH BADM/TENNIS	001 TEFFT VIRGINIA	0800-0940TR	MG/SG CTS	02
		002 DAVID JOYCE E	1200-1340M	MG/SG CTS	02
		003 DAVES M MARISE	1200-1340TR	MG/SG CTS	02
		004 DAVID JOYCE E	1000-1140TR	LB/FH BA	02
PED 2102	T/TH GOLF/BOWL	001 HYNDMAN SCHELLAS W	1100-1240M	LB/BBG	02
PED 2104	T/TH SOC/SP/SPTS	001 BIRKHEAD SCHELLAS W	1100-1240M	LB/BBG	02
PED 2130	ATH TRNG PRCTM	001 BIRKHEAD SCHELLAS W	0800-0850TR	LB308	01
PED 2132	THERAPY EXERCISE	001 BIRKHEAD SCHELLAS W	0800-0850TR	LB308	01
PED 2144	T/TH SCUBA DIV	001 PINTER HAROLD JR	1000-1050M	LB309/PG	02
		002 PINTER HAROLD JR	1900-1950M	LB309/PC	02
		003 PINTER HAROLD JR	1100-1150TR	LB309/PC	02
		004 PADGVAN RAYMOND F	1300-1350TR	LB309/PC	02
		005 PADGVAN RAYMOND F	1900-1950M	LB309/PU	02
PED 2220	T/TH DANCE I	001 YU MARINA SU-CHIN	0800-0940TR	LB/NE	02
		002 YU MARINA SU-CHIN	1300-1440M	LB/NE	02
PED 2230	T/TH MOD DANCE I	001 STUGHTON ALICE C	1000-1140M	MG/DS	02
		002 CIARAVINO MARGE ANN	1000-1140M	MG/DS	02
		003 CIARAVINO MARGE ANN	1300-1440M	MG/DS	02
		004 CIARAVINO MARGE ANN	1600-1740M	MG/DS	02
		005 STAFF	1400-1540TR	MG/DS	02
		006 STAFF	1600-1740TR	MG/DS	02
		007 STUGHTON ALICE C	1800-1940M	MG/DS	02
PED 2240	TH DANCE COMP	001 STUGHTON ALICE C	1200-1340TR	MG/DS	02
PED 2250	T/TH RHYTHM MOVE	002 CIARAVINO MARGE ANN	0800-0940TR	MG/DS	02
PED 2270	HIST/PHIL DANCE	001 TEFFT VIRGINIA	1100-1150M	MG106	03
PED 2320	TECH/GYMN	001 HUSSEY ROBERT W	0800-0940TR	LB/SG	02
		002 HUSSEY ROBERT W	1000-1140M	LB/SG	02
PED 2370	T/TH FLD HOC/VB	001 TEMPLE BETTY J	1200-1340TR	MG/NG 106	02
PED 2410	ELEM SCHOOL PE	001 WEBER MARY LOUISE	0800-0850M	MG/NG 106	03
		002 GREEN NORMA C	0900-0950M	MG/NG 106	03
		003 ANKENBRAND LARRY J	1100-1240TR	LB308	01
		004 FISCHER RUSSELL D	0800-0850M	LB304	04
		005 WOODALL M THOMAS	1000-1050M	LB304	04
		006 HUSSEY ROBERT W	1300-1350M	LB304	04
		007 MOORE NEIL E	1400-1450M	LB304	04
		008 FLOWER M LORRAINE	0900-0950TR	MG136	02
		009 FLOWER M LORRAINE	1300-1350TR	MG136	02
PED 2450	PE EXCEP IND	001 ATCHISON MARY E	1000-1140TR	EA	01
		002 SANDERS J W	1900-2040TR	LB308	01
		003 SANDERS J W	1900-2040TR	LB308	01
		004 TEFFT VIRGINIA	1400-1240TR	LB/FH	01
		005 ATEN DENNIS W	0900-0950M	S332	03
		006 TEFFT VIRGINIA	1200-1250M	MG/DS 137	03
		007 STUGHTON ALICE C	0800-0940TR	MG/DS	02
		008 HILKE BARBARA	0900-0950M	LB/BBG308	03
PED 3380	SB/VB TCH/CCHNG	001 NEVINS LYNETTE D	1000-1050M	MG/NG 106	03
		002 NEVINS LYNETTE D	1000-1140M	MG/NG 106	03
PED 3400	METHDS/PE	001 ELMORE WALTER L	0800-0850M	LB308/BBG	03
		002 DAVID JOYCE E	1000-1050M	LB308/BBG	03
		003 DAVES M MARISE	1300-1350M	MG137/BBG	03
		004 EDDY DONALD R	1100-1150M	LB306/BBG	03
PED 3470	BASKETBALL CCHNG	001 SANDERS J W	0900-0950M	LB304/FBS	03
PED 3500	BASEBALL CCHNG	001 SANDERS J W	0900-0950M	LB304/FBS	03
PED 3600	INTR ELEM SCH PE	001 GREEN NORMA C	1000-1140M	MG/NG137	02
		002 GREEN NORMA C	0800-0940TR	MG/NG 106	02
		003 ANKENBRAND LARRY J	1300-1440M	MG/NG 136	02
		004 WEBER MARY LOUISE	0900-0950M	MG/SG 136	03
		005 YU MARINA SU-CHIN	1100-1150M	MG/SG	03
		006 MULLEN BETTY	0800-0850M	LB/SG 303	03
		007 WEBER MARY LOUISE	1300-1440M	MG/BR	02
		008 SANDERS J W	1100-1150TR	LB309	03
		009 KATSIMPALIS TOM	1000-1050M	LB308	03
		010 KATSIMPALIS TOM	1300-1350M	LB309	03
		011 SANDERS J W	1100-1150M	LB304	03
		012 FISCHER RUSSELL D	1300-1350M	LB303	04
		013 BUCKELLEW WILLIAM F	1900-2130M	MG106	03
		014 ANKENBRAND LARRY J	1900-2040M	MG106	02
		015 LSWELL WALTER S	0900-0950TR	LB303	02
		016 FISCHER RUSSELL D	1100-1150M	MG136	03
		017 WOODALL M THOMAS	0800-0850M	LB/RL	04
		018 HART DOROTHY M	1400-1450M	LB303	04
		019 BUCKELLEW WILLIAM F	ARR	ARR	03
		020 BUCKELLEW WILLIAM F	ARR	ARR	04
		021 BUCKELLEW WILLIAM F	ARR	ARR	05
		022 BUCKELLEW WILLIAM F	ARR	ARR	06
		023 BUCKELLEW WILLIAM F	ARR	ARR	07
		024 BUCKELLEW WILLIAM F	ARR	ARR	08
		025 BUCKELLEW WILLIAM F	ARR	ARR	09
		026 BUCKELLEW WILLIAM F	ARR	ARR	10
		027 BUCKELLEW WILLIAM F	ARR	ARR	11
		028 BUCKELLEW WILLIAM F	ARR	ARR	12
		029 BUCKELLEW WILLIAM F	ARR	ARR	13
		030 BUCKELLEW WILLIAM F	ARR	ARR	14
		031 BUCKELLEW WILLIAM F	ARR	ARR	15
PED 5991	INTERN/SPTS ADM	001 BUCKELLEW WILLIAM F	ARR	ARR	03
PED 5992	INTERN/SPTS ADM	001 BUCKELLEW WILLIAM F	ARR	ARR	03

PLS 4275	INTERNSHIP	001 STAFF	ARR	MTWRF	ARR	01
		002 STAFF	ARR	MTWRF	ARR	02
		003 STAFF	ARR	MTWRF	ARR	04
		004 STAFF	ARR	MTWRF	ARR	04
		005 STAFF	ARR	MTWRF	ARR	08
		006 STAFF	ARR	MTWRF	ARR	03
PLS 4753	PROG EV/RES METH	001 MCNITT ANDREW D	1300-1350M	MTWRF	CH203	03
PLS 4774	SUPREME CT/CONST	001 LEIGH PETER R II	0900-1040TR	ARR	CH205	04
*PLS 4831	NATL POL ISSUES	001 THORSEN LAURENCE C	1230-1345TR	ARR	CH205	01
*PLS 4832	NATL POL ISSUES	001 THORSEN LAURENCE C	ARR	MTWRF	ARR	01
*PLS 4833	NATL POL ISSUES	001 THORSEN LAURENCE C	ARR	MTWRF	ARR	01
PLS 4893	GOV BUDGET/TAX	001 GCDRICK RICHARD P	1400-1515TR	ARR	CH205	03
PLS 4903	PUL THEORY I	001 CHEN YUNG PING	1200-1250M	MTWRF	CH229	03
PLS 5003	ADMIN INTERN I	001 STAFF	ARR	MTWRF	ARR	03
PLS 5013	ADMIN INTERN II	001 STAFF	ARR	MTWRF	ARR	03
PLS 5063	SEM:LRBAN DEV	001 STAFF	ARR	MTWRF	ARR	03
PLS 5133	SEM:ASIA/MID E	001 LATEEF ABDUL	0900-1130R	ARR	CH309	03
PLS 5173	SEM:CONGRESS POL	001 CHEN YUNG PING	1900-2130T	ARR	CH309	03
PLS 5273	SEM:EXEC PROC	001 MCNITT ANDREW D	1900-2130M	ARR	CH309	03
PLS 5533	SEM:POL MODERN	001 BONNICKSEN ANDREA L	1900-2130R	ARR	CH309	03
PLS 5950	THESIS	003 STAFF	ARR	MTWRF	ARR	03
		004 STAFF	ARR	MTWRF	ARR	04
		005 STAFF	ARR	MTWRF	ARR	05
		006 STAFF	ARR	MTWRF	ARR	06

*Students wishing 3 sem. hrs. of credit must register for 4831, 4832, 4833.

COURSE DESCRIPTION	SECT.	INSTRUCTOR	MEETING TIME	BLDG/RCCM	C	
PSY 2310 INTRO PSYCH I	001	PANEK PAUL E	0800-0850M	S222	03	
	002	PANEK PAUL E	0900-0950M	S222	03	
	003	STAFF	1000-1050M	S222	03	
	004	CCE HAROLD G	1000-1050M	S224	03	
	005	LIVINGSTON INEZ B	1100-1150M	S222	03	
	006	LIVINGSTON INEZ B	1200-1250M	S222	03	
	007	STAFF	1300-1350M	S222	03	
	008	LIVINGSTON INEZ B	1400-1450M	S108	03	
	009	STAFF	1500-1550M	S222	03	
	010	STACKHOUSE HENRY A	0930-1045TR	S222	03	
	011	STACKHOUSE HENRY A	1230-1345TR	S334	03	
	012	STACKHOUSE HENRY A	1400-1515TR	S415	03	
	013	SLIMMERS FRANCIS E	0900-0950M	S106	03	
	014	TILL ROBERT E	0900-0950M	S434	03	
	015	COE HAROLD G	0900-0950M	S334	03	
PSY 2320 INTRC PSYCH II	001	BEST JOHN B	0800-0850M	S316	03	
	002	ROBERTS WILLIAM T	0900-0950M	S108	03	
	003	BEST JOHN B	1000-1050M	S224	03	
	004	BEST JOHN B	1400-1450M	S224	03	
PSY 2330 INTRC TO HELPING	001	LADD CLAYTON	0900-0950M	S224	03	
	002	LADD CLAYTON	1300-1350M	S224	03	
	003	LADD CLAYTON	1000-1050M	S215	03	
PSY 2610 STAT METH PSY	001	HEARDEN JOHN J	0900-0950M	S127	04	
	002	HEARDEN JOHN J	1000-1050M	S127	04	
PSY 3310 PHYSIOL PSY	001	HCLT GARY L	0900-0950M	S110	04	
PSY 3400 METH TEACH PSY	001	HOCKMAN DAN M	0800-0915TR	BEE109	03	
PSY 3515 CHILD PSY	001	JACKSON LOUISE	1400-1450M	S127	03	
	002	JACKSON LOUISE	1500-1550M	S108	03	
	003	HCLT GARY L	1030-1145TR	S334	03	
PSY 3520 ADCL PSY	001	BATSCHE GEORGE M JR	1500-1550M	S222	02	
	002	STONER SUE B	1600-1740M	S224	03	
PSY 3525 MAT & OLD AGE	001	PANEK PAUL E	0800-0915TR	S108	02	
PSY 3530 INDUSTRIAL PSY	001	COE HAROLD G	1100-1150TR	S108	02	
PSY 3550 MENTAL HYGIENE	001	BEST RANDALL H	0900-0950TR	S108	02	
	002	BEST RANDALL H	1000-1050TR	S108	02	
PSY 3590 THEOR PERS	001	MCRICE HERBERT O	1900-2130M	S222	03	
	002	JACKSON LOUISE	1200-1345TR	S108	03	
PSY 3601 MEAS PRIN	001	STONER SUE B	1000-1215TR	S224	03	
	002	STONER SUE B	1230-1345TR	S224	03	
PSY 3690 CONTRV TOPICS	001	STAFF	1400-1450M	S106	03	
PSY 3800 RESEARCH METHODS	001	CCE HAROLD G	1200-1250M	S106	04	
PSY 3810 EXP PSY LEARNING	001	MCGOWN WILLIAM PERRY	1000-1050M	S316	04	
	002	MCGOWN WILLIAM PERRY	1000-1140TR	S316	04	
	003	REARDEN JOHN J	1500-1550M	S316	04	
PSY 4250 HISTORY-SYSTEMS	001	HUSTMYER FRANK E JR	1100-1150M	S106	04	
PSY 4275 INTERNSHIP	001	STAFF	ARR	MTWRF	ARR	01
	002	STAFF	ARR	MTWRF	ARR	02

SOCIOLOGY				
COURSE DESCRIPTION	SECT.	INSTRUCTOR	MEETING TIME	BLDG/ROOM R.
SUC 2710 PRINS/SOCIOLOGY	001	TIMBLIN ROBERT C	0800-0850MWF	CH340 03
	002	WHITTENBARGER ROBERT	1000-1050MWF	CH340 03
	003	WHLSTEIN RONALD	1000-1050MWF	CH120 03
	004	MUNSON BYRON E	1100-1150MWF	CH200 03
	005	BAI JUMUNA	1100-1150MWF	LS201 03
	006	WHITTENBARGER ROBERT	1300-1350MWF	CH218 03
	007	STOLTZFUS VICTOR E	1400-1450MWF	CH340 03
	008	STOLTZFUS VICTOR E	1500-1550MWF	CH337 03
SUC 2720 SOCIAL PROBLEMS	001	NESBIT WILLIE A JR	1100-1215TR	CH337 03
	002	NESBIT WILLIE A JR	1230-1345TR	CH340 03
SUC 2761 INTRC TO CRIM	001	JENKINS SAMUEL W	0930-1045TR	CH337 03
	002	NESBIT WILLIE A JR	0930-1045TR	CH226 03
	003	JENKINS SAMUEL W	1300-1350MWF	CH226 03
SUC 3600 INTRC/SOC WORK	001	STUTE FRIEDA	1230-1345TR	CH226 03
	002	STUTE FRIEDA	1530-1645TR	CH226 03
SUC 3610 STATISTICS	001	WHLSTEIN RONALD	1200-1250MWF	CH337 03
	002	WHLSTEIN RONALD	1400-1450MWF	CH226 03
SUC 3650 SOC SYSTEMS/ROLE	001	HUMMEL RICHARD L	1500-1550MWF	CH226 03
	002	HUMMEL RICHARD L	1300-1350MWF	CH337 03
SUC 3681 PUB OPINION/PROP	001	JONES JONETTA	1230-1345TR	CH337 03
	002	TIMBLIN ROBERT C	1400-1450MWF	CH326 03
SUC 3780 POLICING SOCIETY	001	JENKINS SAMUEL W	1900-2130M	CH337 03
SUC 3801 SOC RURAL LIFE	001	WHITTENBARGER ROBERT	1100-1150MWF	CH340 03
SUC 3910 SOC URBAN LIFE	001	MUNSON BYRON E	1000-1050MWF	CH226 03
SUC 4275 INTERNSHIP	003	STAFF	ARR	ARR 06
	006	STAFF	ARR	ARR 06
	009	STAFF	ARR	ARR 06
	012	STAFF	ARR	ARR 12
SUC 4520 DEV/SOC THOUGHT	001	HUMMEL RICHARD L	1000-1050MWF	CH340 03
SUC 4622 RESEARCH METHODS	001	HUMMEL RICHARD L	1200-1250MWF	CH340 03
SUC 4702 SOC OF MEDICINE	001	STUTE FRIEDA	0930-1045TR	CH337 03
SUC 4721 SOCIAL STRAT	001	BAI JUMUNA	0900-0950MWF	CH226 03
SUC 4730 MARRIAGE & FAMILY	001	TIMBLIN ROBERT C	1100-1150MWF	CH226 03
	002	TIMBLIN ROBERT C	1300-1350MWF	CH340 03
SUC 4790 CORRECTIONAL/PRG	001	NESBIT WILLIE A JR	1900-2130M	CH337 03
SUC 4800 GERONTOLOGY	001	STUTE FRIEDA	1900-2130M	CH228 03
SUC 4900 INDV PROBLEMS	001	MUNSON BYRON E	1900-2130M	CH226 03
SUC 5030 SOCIAL THEORY	001	WHITTENBARGER ROBERT	1900-2130M	CH226 03
SUC 5100 SOC ORGANIZATION	001	BAI JUMUNA	1900-2130M	CH226 03
SUC 5150 ADV CRIMINOLGY	001	JENKINS SAMUEL W	0900-0950MWF	CH326 03
SUC 5930 INTERNSHIP	003	STAFF	ARR	ARR 06
	006	STAFF	ARR	ARR 06
SUC 5950 THESIS	003	STAFF	ARR	ARR 06
	006	STAFF	ARR	ARR 06

SPEECH PATHOLOGY & AUDIOLOGY				
COURSE DESCRIPTION	SECT.	INSTRUCTOR	MEETING TIME	BLDG/ROOM R.
SPA 2110 STR AND FUNCTION	001	THURMAN WAYNE L	0900-0950TR	CS201 02
SPA 2830 EVAL AND THERAPY	001	DGDSON BETTY L	0800-0850TR	CS201 02
SPA 3250 LANG DISORDERS	001	AUGUSTINE ROBERT M	1000-1115TR	CS201 03
SPA 3300 VOICE AND ARTIC	001	THURMAN WAYNE L	1400-1515MWF	CS201 03
SPA 3600 AUDIOLOGY	001	WEIER NANCY A	0900-0950MWF	CS201 03
*SPA 4700 CLIN PRACTICE	001	STAFF	ARR	ARR 01
			1300-1500R	
SPA 4755 INTRC GRAD STUDY	001	WORTHLEY WILLIAM J	1900-2130T	CS201 03
SPA 4760 ADV AUDIOLOGY	001	WEIER NANCY A	1300-1350MWF	CS201 03
SPA 4800 CGRR CLSSRM TCHR	001	NILSEN JILL M	0800-0850MWF	BE8109 03
SPA 5350 ARTIC DISORDERS	001	WORTHLEY WILLIAM J	1400-1515MWF	CS201 03
*SPA 5470 ADV CLIN PRACT	001	STAFF	ARR	ARR 01
			1300-1500R	
SPA 5490 ORGANIC DISORDER	001	LCWERY SCOTT D	0800-0850MWF	CS201 04
SPA 5950 THESIS	003	STAFF	ARR	ARR 06
	004	STAFF	ARR	ARR 06
	005	STAFF	ARR	ARR 06
	006	STAFF	ARR	ARR 06

*Note: students register once for 1 s.h. of-credit, twice for 2 s.h., etc.

SPECIAL EDUCATION				
COURSE DESCRIPTION	SECT.	INSTRUCTOR	MEETING TIME	BLDG/ROOM R.
SPE 2500 ED CHILD EXCEPT	001	JACOBS JACQUELINE	0900-0950T	BE8214 03
	002	STAFF	0900-1040R	BE8214 03
			1500-1650T	
			1600-1740R	
SPE 3300 CHILD/MENTAL HDC	003	STAFF	1900-2130M	BE8218 03
SPE 3350 CHILD WITH L.D.	001	CROWNER TIMOTHY	1900-2130T	BE8218 03
	001	CROWNER TIMOTHY	0900-0950MWF	BE8218 03
	002	JACOBS JACQUELINE	1900-2130M	BE8207 03
SPE 3600 LEARN THEO SPE	001	JACOBS JOHN F	0930-1045TR	BE8218 03
	002	JACOBS JOHN F	1200-1250MWF	BE8218 03
SPE 3660 CHILD WITH B.D.	001	CARLSEN ROGER N	1200-1250MWF	BE8202 03
SPE 4765 GIFTED/CREAT STD	001	DCUGHTY EARL	1900-2130M	BE8202 03
SPE 4770 DIAG CHD/EXCEPT	001	SHANK KATHLENE R	0900-1040M	BE8205 04
	002	SHANK KATHLENE R	0900-0950F	BE8205 04
			1300-1440M	
			1300-1350F	
			1700-1840M	
	004	STAFF	1600-1740T	BE8205 04
			1600-1830R	
*SPE 4800 STUDIES IN ED	030	CARLSEN ROGER N	ARR	UREANA 01
	031	STAFF	ARR	UREANA 01
SPE 4900 TCH CHD/MENT HDC	001	MCERNICKE PLACIDO	1300-1415M	BE8218 03
SPE 4950 TCH CHD/L.D.	001	JACOBS JACQUELINE	1000-1115M	BE8214 03
	001	JACOBS JACQUELINE	1000-1050T	BE8214 03
SPE 4970 VOC DEV ST/HDC	080	STAFF	ARR	MTWRF 03
	081	MCERNICKE PLACIDO	ARR	MTWRF 03
SPE 4980 TCH CHD/B.D.	001	CARLSEN ROGER N	0900-1040M	BE8109 03
	080	CARLSEN ROGER N	ARR	MTWRF 03
SPE 5120 ISSUES/SP ED	001	MCERNICKE PLACIDO	1900-2130M	BE8218 03
SPE 5900 RESEARCH/SP ED	001	JACOBS JOHN F	1600-1830M	BE8218 03

*Restricted enrollment: Prior approval is required for this section.

SPEECH - COMMUNICATION				
COURSE DESCRIPTION	SECT.	INSTRUCTOR	MEETING TIME	BLDG/ROOM R.
SPC 1020 APPL FORENSICS	001	SVALDI DAVID P	ARR	MTWRF 01
	002	SVALDI DAVID P	ARR	MTWRF 02
	003	SVALDI DAVID P	ARR	MTWRF 03
SPC 1310 INTRC SP-COMM	001	GARNER DONALD P	0800-0850MWF	CH112 03
	002	GARNER DONALD P	0800-0850MWF	CH113 03
	003	GARNER DONALD P	0800-0850MWF	CH116 03
	004	GARNER DONALD P	0900-0950MWF	CH112 03
	005	SMITH CALVIN N	0900-0950MWF	CH113 03
	006	HADWIGER KENNETH	0900-0950MWF	AAE217 03
	007	MCSWAIN J EARL	1000-1050MWF	CH117 03
	008	WILEY ROGER GLEN	1000-1050MWF	CH117 03
	009	HARRISON CHARLES R	1000-1050MWF	CH117 03
	010	HOPKINS JON	1100-1150MWF	CH117 03
	011	STAFF	1100-1150MWF	CH107 03
	012	RUNDLE ALBERT G	1100-1150MWF	CH113 03
	013	MCSWAIN J EARL	1200-1250MWF	CH113 03
	014	MCLERREN BERYL F	1300-1350MWF	CH112 03
	015	MCBERG JANET	1300-1350MWF	CH107 03
	016	HOPKINS JON	1400-1450MWF	CH111 03
	017	SMITH CALVIN N	1400-1450MWF	CH229 03
	018	HOPKINS JON	1500-1550MWF	CH111 03
	019	NORBERG JANET	1500-1550MWF	CH113 03
	020	STAFF	1600-1715M	CH112 03
	021	STAFF	1600-1715M	CH113 03
	022	STAFF	0800-0915TR	CH112 03
	023	STAFF	0800-0915TR	CH116 03
	024	SVALDI DAVID P	1100-1215TR	CH113 03
	025	MCSWAIN J EARL	1100-1215TR	CH201 03
	026	STAFF	1230-1345TR	CH112 03
	027	HERSHMAN PHYLLIS S	1230-1345TR	CH112 03
	028	MCLERREN BERYL F	1230-1345TR	CH116 03
	029	STAFF	1400-1515TR	CH113 03
	030	GARNER DONALD P	1400-1515TR	CH111 03
	031	GARNER DONALD P	1400-1515TR	CH112 03
	032	STAFF	1530-1645TR	CH111 03
	033	GARNER DONALD P	1530-1645TR	CH112 03
	034	STAFF	1300-1645TR	CH113 03
	035	STAFF	0800-0915TR	CH109 03
	036	STAFF	0930-1045TR	CH117 03
	037	STAFF	0930-1045TR	BH300 03
	038	PERKINS TERRY M	0930-1045TR	BH300 03
	039	GARNER DONALD P	0930-1045TR	EH313 03
	040	GARNER DONALD P	1200-1250MWF	CH111 03
	041	GARNER DONALD P	1200-1250MWF	CH112 03
	042	GARNER DONALD P	1300-1350MWF	AAE217 03
	043	GARNER DONALD P	1300-1350MWF	CH103 03
SPC 1400 PARL LAW	001	WILEY ROGER GLEN	0900-1040T	CH112 01
SPC 2170 ORAL COMM THEORY	001	WILEY ROGER GLEN	1500-1550MWF	CH112 03
SPC 2300 PERSUASION	001	NORBERG JANET	0900-0950MWF	CH116 03
	002	SMITH CALVIN N	1000-1050MWF	CH113 03
	003	HARRISON CHARLES R	1300-1350MWF	CH116 03
	004	HARRISON CHARLES R	1500-1550MWF	CH116 03
	005	MERRITT FLOYD ERNEST	1100-1215TR	CH111 03
SPC 2320 DISCUSSION	001	HARRISON CHARLES R	0900-0950MWF	AAE217 03
	002	PERKINS TERRY M	1000-1050MWF	CH112 03
	003	PERKINS TERRY M	1100-1150MWF	CH112 03
	004	RUNDLE ALBERT G	1400-1450MWF	CH113 03
	005	HOPKINS JON	1300-1350MWF	CH117 03
SPC 2340 REAS IN CONTRCV	001	SVALDI DAVID P	0930-1045TR	CH111 03
	002	HERSHMAN PHYLLIS S	1100-1215TR	CH112 03
SPC 2520 INTRC-MASS COMM	001	OSEGUERA A ANTHONY	0900-0950MWF	CH117 03
	002	MCSWAIN J EARL	1400-1450MWF	CH117 03
	003	HEUMANN JOSEPH K	1100-1215TR	CH117 03
	004	OSEGUERA A ANTHONY	1230-1345TR	CH109 03
	001	HEUMANN JOSEPH K	1000-1050MWF	CH117 03
	002	HEUMANN JOSEPH K	1000-1050M	CH117 03
			1100-1240M	
SPC 2540 UNDERSTAND MEDIA	001	WILEY ROGER GLEN	1100-1215TR	S121 03
SPC 2550 BASIC BRDST SP	001	PARCELLS FRANK E	1230-1410TR	CH117 03
SPC 2830 LANG HAB HUM AFF	001	MERRITT FLOYD ERNEST	0800-0850MWF	CH107 03
	002	MCLERREN BERYL F	1400-1450MWF	CH112 03
SPC 3020 APPL FORENSICS	001	SVALDI DAVID P	ARR	MTWRF 01
	002	SVALDI DAVID P	ARR	MTWRF 02
	003	SVALDI DAVID P	ARR	MTWRF 03
	004	SVALDI DAVID P	ARR	MTWRF 04
SPC 3300 INTERVIEW-CONF	001	RUNDLE ALBERT G	1300-1350MWF	CH113 03
	002	HERSHMAN PHYLLIS S	0800-0915TR	CH111 03
SPC 3400 TEACHING SPEECH	001	GRAHAM BEVERLY	1100-1215TR	CH116 03
SPC 3520 RADIC PRODUCTION	001	HADWIGER KENNETH	1500-1550MWF	CH117 03
	002	HADWIGER KENNETH	1500-1550MWF	CH117 03
SPC 3540 TV PRODUCTION	001	OSEGUERA A ANTHONY	0930-1045TR	BE8139 03
SPC 3610 BRDST NEWS WRIT	001	PARCELLS FRANK E	1400-1450MWF	CH121 03
SPC 3900 DIR FORENSIC ACT	001	GRAHAM BEVERLY	0930-1045TR	CH116 03
SPC 3903 RHETORIC/WOMEN	001	NORBERG JANET	1100-1150MWF	CH116 03
SPC 4275 INTERNSHIP	003	HEUMANN JOSEPH K	ARR	MTWRF 06
	006	HEUMANN JOSEPH K	ARR	MTWRF 06
	009	HEUMANN JOSEPH K	ARR	MTWRF 06
	012	HEUMANN JOSEPH K	ARR	MTWRF 12
SPC 4760 THEO/INTERP COMM	001	PERKINS TERRY M	1400-1450MWF	CH116 03
SPC 4800 CCATEM AN PUB AD	001	SMITH CALVIN N	1300-1350MWF	CH111 03
SPC 5320 BACKGRD OF RHET	001	MCLERREN BERYL F	1900-2130M	CH116 03
SPC 5450 NAT/FRO MASS COM	001	O		

Classified ads

Please report classified ad errors immediately at 581-2812. A correct ad will appear in the next edition. Unless notified, we cannot be responsible for an incorrect ad after its first insertion.

Services Offered

Type for you. Call Sandy at 345-7111. 8-7

Help Wanted

For LPN needed for full-time 7/3 Competitive hourly wage. Very pleasant working conditions. Please apply in person to Director of Nursing, Pop Convalescent Center. 910 W. Charleston. 8-7

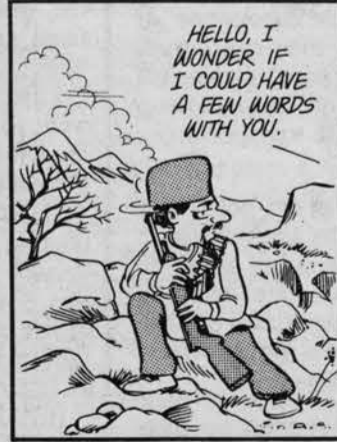
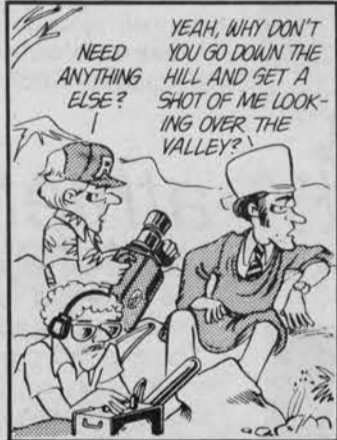
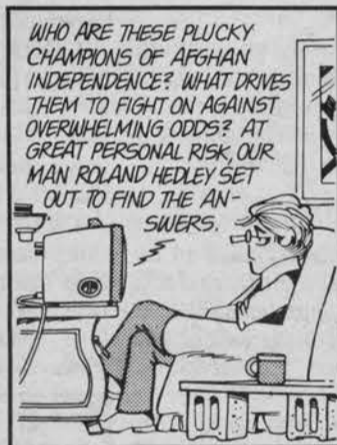
Joe's Lounge is now taking applications for bartenders, waitresses and floor people. Apply in person after 4 p.m. 410-6th. 8-7

Anglia's is now accepting applications for full employment. Apply in person after 4 p.m. for positions as messengers, delivery boys, and pizza makers. 1600 E. Lincoln. 8-7

L. Krackers now accepting applications for female bartenders and cocktail waitresses. Apply in person at L. Krackers. 5-7

Wanted

WONESBURY



WANTED: 2 well-behaved male roommates for fall/spring. Nice apt., excellent location. Leave your name/address/phone at Howard Eads Real Estate 31

WANTED to buy: junk cars. Phone 345-5702 8-7

Female roommate wanted for fall and spring in very nice 3 bedroom house. Call 234-2411. 8-5

For Rent

One and two bedroom apartments, trailers for rent, reasonable rates. 345-7191. 8-7

2 bedroom furnished mobile home. Newly carpeted with air conditioning and underpinning. No pets allowed. \$160 per month plus \$100 deposit. Available immediately. 349-8859. 31

Nice 2-bedroom furnished and unfurnished mobile homes in Charleston. 234-8032. 8-7

Very nice 3-room furnished apartment for grad student, faculty member or married couple. Very close to EIU. Call 345-4757. 8-7

EXTRA NICE 4 bedroom 2 baths, gas heat. Ideal for family or responsible tenants. 345-4595. Also nice 3 bedroom house. 8-7

Needed: One female to sublease nice apt. Cheap, furnished, near campus. Call 1-826-5159. Ask for Tina. 8-7

Very nice one-bedroom unfurnished apartment for rent for mature single or couple. Good rent and location. Call after 3 p.m. 345-3650. 31

Two and three bedroom furnished or unfurnished apartments for rent in Charleston, \$200 and \$300 per month. Also 5-bedroom furnished hour for rent. 345-4508. 8-7

Female roommate wanted for fall and spring to sublease 2 bedroom townhouse on 6th and Polk. Call 348-1021. 31

Apt. 2 bdrm, furnished \$275 includes heat. 345-7286, 345-5396. 31

To Give away - Loveable, playful kittens to good home only. 348-0027. 31

For Sale

For Sale: Laser Pendant Jewelry - limited selection, \$20-35. 345-6861. Th only 8-7

1972 Monarc Mobile home 12x60. Two-bedroom furnished. Outside shed, enclosed porch, washer and dryer. \$5,500. 345-9466. 31

1977 Blue Gremlin, 30,000 miles a/c. 345-9662. 31

Crushed velour modern couch (blue, avocado, white), mediterranean coffee table and octagon end table. Like new. \$350 for 3 pieces. 348-0759. 31

74 Yamaha 250 RD in good condition - just tuned, \$350 or offer. 581-2830. 31

For Sale: 1973 350 Harley Davidson-Electric start - 345-7897 after 6 p.m. 31

WHY RENT WHEN YOU CAN BUY? A newly carpeted 2-bedroom furnished mobile home. A/C and underpinned. Must see to appreciate. \$3,200. 234-8032. 5-7

Sansui G-2000 Stereo receiver, 16 wts., p.ch. Good condition, must sell, will take first reasonable offer. Call Dick 345-7878. 31

12'x55' Liberty Mobile Home. Extra nice and furnished. \$5,000. 618-686-7791. 31

Bicycles - Reconditioned \$20 up. New - \$50. Call 234-8785. 8-7

Toyota, 1979, PRICE REDUCED, over 40MPG highway. Immaculate. \$5,150 or offer. 345-7278 or 345-7083. 8-7

Men's Clothing for Sale (Like New): Leather Jacket size 42 (valued at \$100.00) \$35.00. 3 pc. vested suit size 40 (valued at \$125.00) \$35.00. V-neck sweater size Large \$5.00. 2 shirts for \$7.00 each, sizes: M & L. 1 pr. of pants 32 waist \$7.00. Call 2929. (Anytime after 1 p.m.). 31

For Sale - 1967 Olds 98. \$300.00 Ph. 345-4562. 8-7

Announcements

KEEP ABORTION SAFE AND LEGAL - Join Nara! - Free Referrals. 345-9285. 8-7

Rent a mini storage as low as \$15 per month. Phone 345-7746. West Rte. 16. 00

Carpet your room with a remnant from Carlyle Interiors Unlimited. Located 2 miles west of Charleston on Rte. 16. Open 8-6 Monday through Saturday. Phone 345-7746. 00

BIRTHRIGHT CARES: Gives free pregnancy tests. M-Th. 5:00-8:00 348-8551. 8-7

Free quart of Coke with large pizza delivery or pickup. Adducci's Pizza 345-9141, 345-9393. 00

Typing wanted. Call 345-9225 between 5 and 10 p.m. 8-7

Experienced typist will type for you 345-7755. 8-7

Fast Resume Service. Seniors your resume attracts more interest when printed. Let us help make your resume look professional. Low, low price. Wide selection of paper. Rardin Graphics, 617 - 18th St. 8-7

For typing, call Doris 345-9529. 31

Wanted: someone with a station wagon to drive to Pittsburgh, Pa., the last week in August. Gas and expenses will be provided. References can be exchanged. Call A.C. 217/345-4228. 31

Typist available. Call Evelyn. 345-6831. 8-7

(Answers to Puzzle)

L	E	E	N	A	B	O	B	M	A	T	H				
U	R	N	S	I	D	A	H	O	E	C	R	U			
K	N	O	C	K	E	D	T	O	G	E	T	H	E	R	
E	S	S	E	N	C	E	S	E	S	E	S	G	R	E	E
N	E	E	D	G	A	G	E								
P	A	S	T	E	S	B	O	N	N	U	G	H			
A	B	I	E	S	E	A	T	O	N	E	O				
S	H	E	D	D	I	N	G	L	I	G	H	T	O	N	
S	O	N	A	R	I	E	S	A	I	D	E				
E	R	A	R	A	P	T	G	A	L	L	E	Y			
G	E	N	E	M	A	L	T								
S	N	E	E	R	B	A	T	T	I	E	S				
T	U	R	N	S	O	N	E	S	H	A	N	D	T	O	
A	M	I	R	D	E	N	S	E	G	A	O	L			
B	A	N	E	D	E	T	E	R	M	A	D				

Say it in the Classifieds

"DO IT YOURSELF" CLASSIFIED AD

COST PER DAY: 50 cents for 10 words or less, \$1 for 11-20 words. All ads **MUST** be paid in advance. Name and phone number are required for office purposes.

AD TO READ

NAME: _____ PHONE: _____

ADDRESS: _____

Place ad and money in envelope and deposit in Eastern News box in Union or bring to News Office in Student Services Building by noon the day before it is to run.

AD TO START _____ AND RUN FOR _____

Eastern News Sports

Thursday, July 31, 1980/Page 12

Turk released from the Green Bay Packers



Former Eastern center Jack Lafferty has decided pro-football is not what he wants to do for the rest of his life. (News file photo)

by Vickie Woodbury

Former Eastern quarterback Steve Turk was among eight rookies released by the Green Bay Packers last Thursday.

As a starter for the Panthers the past two seasons, Turk completed four of 13 passes for 28 yards for the Packers in a rookie game against the Kansas City Chiefs Saturday.

He and three other rookies were in that game for twenty plays each. Public relations director for the Packers Lee Rimmel said after that the Packers had not seen that much of Turk, but would get a better look at him in the Hall of fame game against San Diego. Turk was cut before that game.

Turk has aspirations of joining another team.

"It would be nice if I could go to the Chicago Bears, but I really don't care, as long as it's somewhere," Turk said from his Morris home.

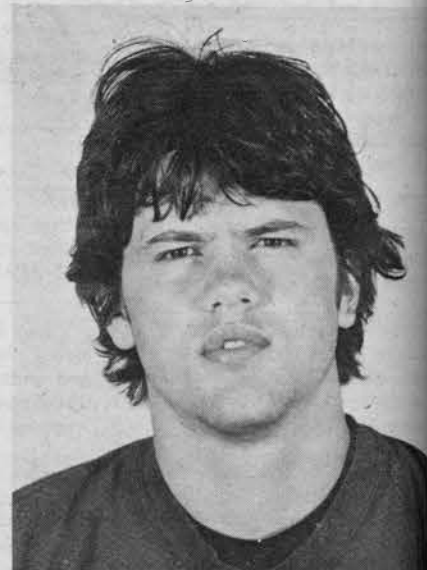
Turk's agent is now contracting other NFL teams to obtain a try-out.

Besides tossing the football around Turk is playing a different game—a waiting game.

Jack Lafferty

While Turk wants to get back in to the NFL former Eastern center Jack Lafferty has decided that he does not want to play football for the rest of his life.

Lafferty signed as a free agent with the Seattle Seahawks and after three days of rookie camp, "I decided football wasn't what I wanted to do for the rest of my life."



Steve Turk

"I went in and told the coaches what I wanted to do, they understood. They were real good about it. They said it happens all the time."

Lafferty has not been in touch with his agent concerning his plans.

"I told him my plan before I went in there," the Waukegan native said. "I was gonna give it a shot and if I didn't like it I'd leave."

Lafferty plans to work the rest of this summer and through the fall and then return to school in the spring and finish up.

I'm not a lazy slob, just A-athletic

I'm not ashamed to admit it. You've heard of being apolitical, well I'm an A-athletic. It's not that I'm allergic to physical exertion, rather I'm just avoiding it for the moment.

Ever since entering Eastern, my mind has been taxed to the limit, but my body has found some loopholes. I didn't have time for intramurals and P.E. classes during the fall and spring semesters. I enjoyed being a spectator instead.

Then came summer and my hopes for fun and games in the sun. Seven hours of classes and the Eastern News dashed those dreams very quickly.

I am taking a P.E. course this summer, but it's Rifle and Pistol. The only true exertion you have in Rifle and Pistol is when you carry the rifles back to the storeroom and bend over and pick up the empty shell casings.

Summer isn't my favorite season for sports anyway. For one, there is tennis. If I had coordination I could play tennis.

I tried to play but I could find a left-handed racquet to match my two left feet.

Golf is even worse. First, there's my wardrobe. How can anyone golf in cut-offs and tank tops. Besides, I couldn't refrain from laughing out loud when my opponent missed a 3 inch putt. Golf is a class sport and I lack class.

Herb
Meeker



Then there is softball. I would be great at softball, if I could only hit, field, steal bases and possessed an arm stronger than one owned by a great grandmother. If it wasn't for these shortcomings I would enjoy playing softball.

Oh yes I can swim. But, I sink a lot in swimming pools and lakes. It has something to do with my body weight to water displacement ratio. In other words my body fails to displace enough water when I swim, so alas, I sink. I would cover my body with axle grease, but I refuse to use greasy kid's stuff.

There's always volleyball. At one time in my life I loved volleyball, then came the spiking syndrome. Everytime I rotated to the front line, I was matched against some 6-foot plus Neanderthal, who (unfortunately for me and my ego) knew the meaning of the word "Spike." "Spike", "Spike",

"Spike", I still have nightmares about those volleyball games. Anyway, can't afford knee and elbow pads.

There is bicycling. I love to ride a bicycle, but on level and straight highways, not hilly and winding terrain. Besides, there are semi-trucks out there with little black silhouettes of bicycles stamped on their cab doors. As far as I know they aren't picking off the cyclers by accident. I think I'll keep my bicycle as alternate transportation, not as recreation.

Don't get me wrong I'm not a lazy slob. Every six months I run a mile or two when my car runs out of gas or lift some weights (12 ounce cans of Busch). I do play a mean game of trash can basketball and I'm a regular wizard with computer football games.

This fall, I might get fired up after watching a football game and then due to my elation call up some friends and play tackle football. After suffering a few assorted broken bones, gouged eyes, bitten ears, and teeth being knocked out, I'll return to my A-athletic status.

I love athletic competition, but only from an easy chair surrounded with ham salad sandwiches and cold cans of beer. Can I help it if my body became middle-aged before its time.

Golf tourney to be held

The second annual Panther Classic will be held at 10:30 a.m. Thursday at the Effingham Country Club.

The classic, sponsored by Schlitz and Eastern is a golf tournament featuring "Best ball."

Best ball is a game in golf where the leading man of a four-man team takes his best shot and then the other three members of the team drop their ball in the same hole.

Last year's first place trophy went to a team composed of Lou Dasenbrock, Rex Darling, Ron Paap and John Ward.

Dasenbrock of Effingham is the team's leading man and even though his team's winning total was 84, 12 over par, Ward, co-owner of Roc's Lounge said, "It's fair to say when Lou faltered we all faltered."

Because of their showing last year with this team, and only this team will be paired together again.

It should be easier to win this year, with the amount practice we have all put in this year," Dasenbrock said.

Rex Darling, who is listed in the Illinois State and Helm Hall's of Fame and a retired Eastern tennis, basketball and football coach agreed, "yes we have put in some time."