

6-1-2012

Morus rubra L.

Loy R. Phillippe

Illinois Natural History Survey, rickp@inhs.illinois.edu

Connie Carroll-Cunningham

Richard L. Larimore

Danielle Ruffatto

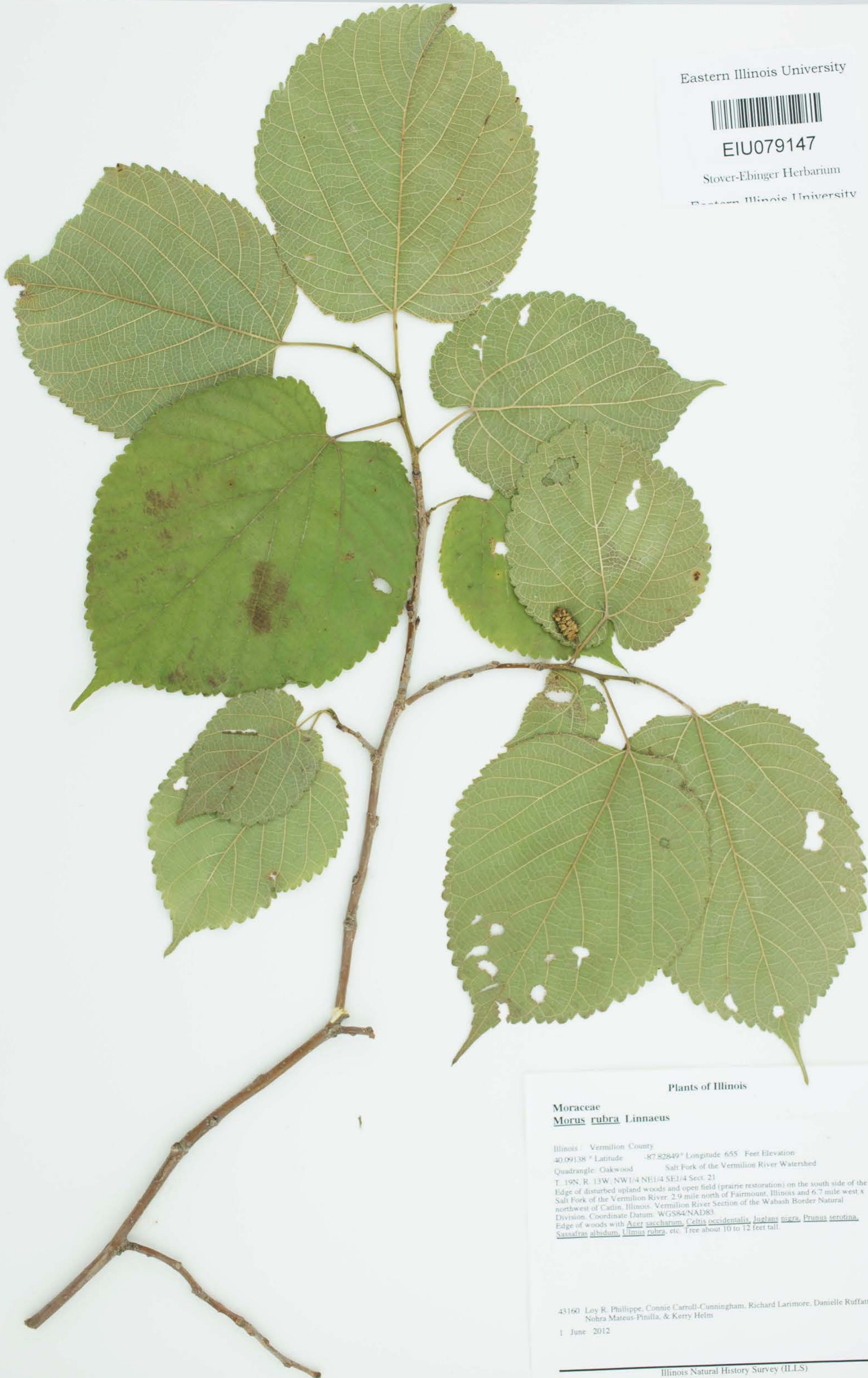
Follow this and additional works at: http://thekeep.eiu.edu/herbarium_specimens_byname



Part of the [Botany Commons](#)

Recommended Citation

Moraceae, *Morus rubra*, L. USA, Illinois, Vermilion, Illinois. Vermilion County. 40.09138° Latitude -87.82849° Longitude 655 Feet Elevation. Quadrangle: Oakwood. Salt Fork of the Vermilion River Watershed. T. 19N, R. 13W, NW1/4, NE1/4, SE1/4 Sect 21. Edge of disturbed upland woods and open field (prairie restoration) on the south side of the Salt Fork of the Vermilion River. 2.9 mile north of Fairmount, Illinois and 6.7 mile west, northwest of Caitlin, Illinois. Vermilion River Section of the Wabash Border Natural Division. Coordinate Datum WGS84/NAD83. Edge of woods, 40.09138, -87.82849, 2012-06-01, Phillippe, Loy R., 43160, (EIU). Stover-Ebinger Herbarium, Eastern Illinois University. http://thekeep.eiu.edu/herbarium_specimens_byname/19058



Eastern Illinois University
EIU079147
Stover-Ebinger Herbarium
Eastern Illinois University

Plants of Illinois

Moraceae
Morus rubra Linnaeus

Illinois: Vermilion County
40.09138° Latitude -87.82849° Longitude 655' Feet Elevation
Quadrangle: Oakwood Salt Fork of the Vermilion River Watershed
T. 19N, R. 13W, NW1/4 NE1/4 SE1/4 Sect. 21
Edge of disturbed upland woods and open field (prairie restoration) on the south side of the Salt Fork of the Vermilion River, 2.9 mile north of Fairmount, Illinois and 6.7 mile west & northwest of Catlin, Illinois, Vermilion River Section of the Wabash Border Natural Division, Coordinate Datum: WGS84/NAD83
Edge of woods with Acer saccharum, Celtis occidentalis, Juglans nigra, Prunus serotina, Sassafras albidum, Ulmus rubra, etc. Tree about 10 to 12 feet tall.

43160 Loy R. Philippe, Connie Carroll-Cunningham, Richard Larimore, Danielle Ruffatto, Nohra Mateus-Pinilla, & Kerry Helm
1 June 2012