

Eastern Illinois University
The Keep

Specimens by Name

Stover-Ebinger Herbarium

5-22-2001

Verbena officinalis L.

D. S. Seigler

John E. Ebinger

Follow this and additional works at: http://thekeep.eiu.edu/herbarium_specimens_byname

 Part of the [Botany Commons](#)

Recommended Citation

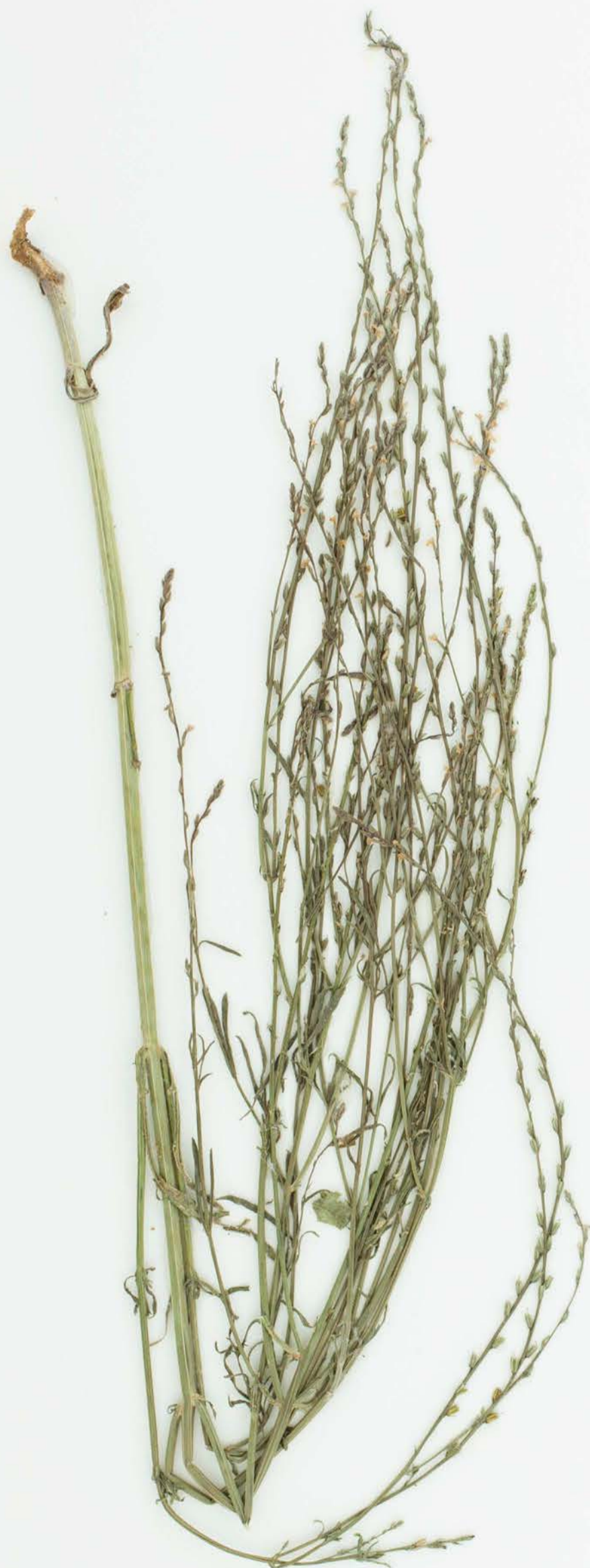
Verbenaceae, *Verbena officinalis*, L. USA, Texas, La Salle, Perennial herb, near west side of the Chaparral Wildlife Management Area, 8 miles W of Artesia Wells. Study area 3., Seigler, D. S., 14927, (EIU). Stover-Ebinger Herbarium, Eastern Illinois University. http://thekeep.eiu.edu/herbarium_specimens_byname/18263

This Specimen is brought to you for free and open access by the Stover-Ebinger Herbarium at The Keep. It has been accepted for inclusion in Specimens by Name by an authorized administrator of The Keep. For more information, please contact tabruns@eiu.edu.



STOVER-EBINGER HERBARIUM
EASTERN ILLINOIS UNIVERSITY

62261



Stover-Ebinger Herbarium
Eastern Illinois University
EIU018190

HERBARIUM - DEPARTMENT OF PLANT BIOLOGY
UNIVERSITY OF ILLINOIS AT URBANA-CHAMPAIGN

Plants of: TEXAS County: LaSalle

Verbena officinalis L. ssp. *halei* (Small)
Barber (= *Verbena halei* Small)

Perennial herb, near west side of the
Chaparral Wildlife Management Area, 8 miles W
of Artesia Wells. Study area 3.

VERBENACEAE

Collector: D.S. Seigler & J.E. Ebinger 14927
Date: 22 May 2001