

7-21-1946

# Verbena simplex Lehm.

Charles Basel Arzeni

Follow this and additional works at: [http://thekeep.eiu.edu/herbarium\\_specimens\\_byname](http://thekeep.eiu.edu/herbarium_specimens_byname)



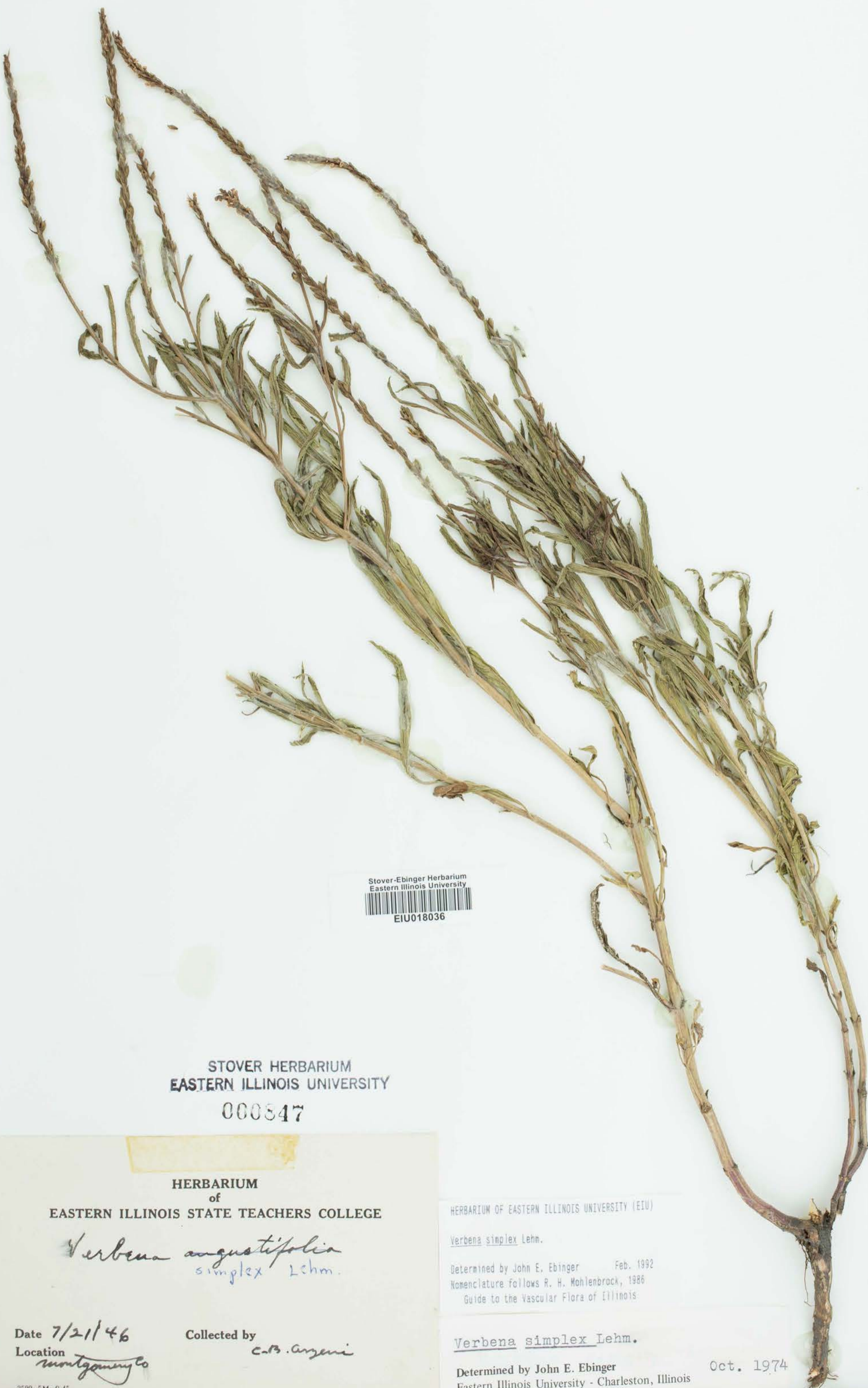
Part of the [Botany Commons](#)

---

## Recommended Citation

Verbenaceae, *Verbena simplex*, Lehm. USA, Illinois, Montgomery, Arzeni, C. B., (EIU). Stover-Ebinger Herbarium, Eastern Illinois University. [http://thekeep.eiu.edu/herbarium\\_specimens\\_byname/18110](http://thekeep.eiu.edu/herbarium_specimens_byname/18110)

This Specimen is brought to you for free and open access by the Stover-Ebinger Herbarium at The Keep. It has been accepted for inclusion in Specimens by Name by an authorized administrator of The Keep. For more information, please contact [tabruns@eiu.edu](mailto:tabruns@eiu.edu).



Stover-Ebinger Herbarium  
Eastern Illinois University  
EIU018036

STOVER HERBARIUM  
EASTERN ILLINOIS UNIVERSITY  
000847

HERBARIUM  
of  
EASTERN ILLINOIS STATE TEACHERS COLLEGE

*Verbena angustifolia*  
*simplex* Lehm.

Date 7/21/46  
Location Montgomery Co

Collected by C.B. Argenti

HERBARIUM OF EASTERN ILLINOIS UNIVERSITY (EIU)

*Verbena simplex* Lehm.

Determined by John E. Ebinger Feb. 1992  
Nomenclature follows R. H. Mohlenbrock, 1986  
Guide to the Vascular Flora of Illinois

*Verbena simplex* Lehm.

Determined by John E. Ebinger  
Eastern Illinois University - Charleston, Illinois

Oct. 1974