

6-23-1972

Verbena bracteata Lag. & Rodr.

Loy R. Phillippe

Illinois Natural History Survey, rickp@inhs.illinois.edu

Follow this and additional works at: http://thekeep.eiu.edu/herbarium_specimens_byname

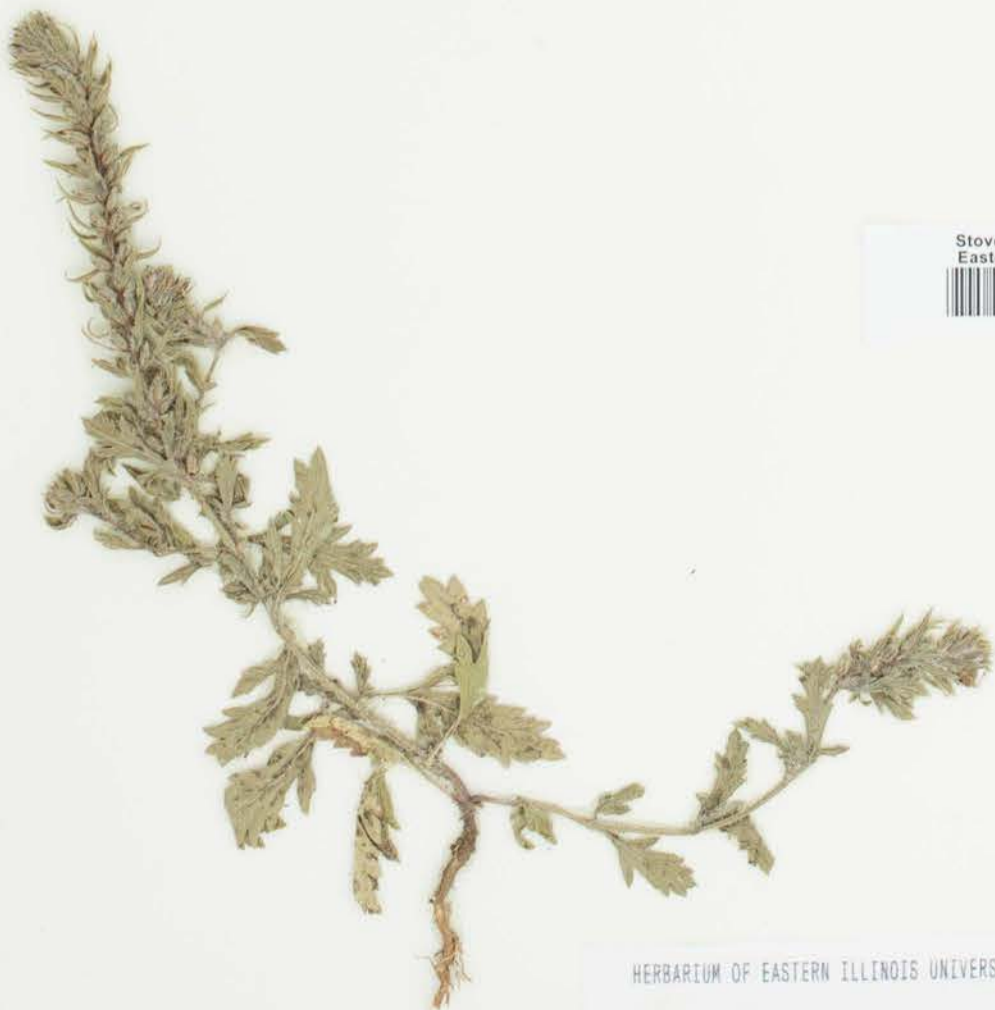


Part of the [Botany Commons](#)

Recommended Citation

Verbenaceae, *Verbena bracteata*, Lag. & Rodr. USA, Illinois, Crawford, Pasture east of Palestine. S.W. 1/4, S.E. 1/4, Sect. 35, R. 11 W. , T. 7 N., Phillippe, L., 1558, (EIU). Stover-Ebinger Herbarium, Eastern Illinois University. http://thekeep.eiu.edu/herbarium_specimens_byname/17937

This Specimen is brought to you for free and open access by the Stover-Ebinger Herbarium at The Keep. It has been accepted for inclusion in Specimens by Name by an authorized administrator of The Keep. For more information, please contact tabruns@eiu.edu.



Stover-Ebinger Herbarium
Eastern Illinois University
EIU012089

STOVER HERBARIUM
EASTERN ILLINOIS UNIVERSITY
13873

STOVER HERBARIUM
of the
EASTERN ILLINOIS UNIVERSITY

Verbena bracteata Lag. & Radr.
blue flowered, four petals
pasture east of Palestine

Date June 23, 1972 Collected by L. Phillippe 1558
Location Crawford Co., Illinois
S.W. 1/4, S.E. 1/4, Sect. 35, R. 11 W., T. 7 N.

HERBARIUM OF EASTERN ILLINOIS UNIVERSITY (EIU)

Verbena bracteata Lag. & Radr.

Determined by John E. Ebinger Feb. 1992
Nomenclature follows R. H. Mohlenbrock, 1986
Guide to the Vascular Flora of Illinois