

Summer 8-25-1959

Fanny

Little Theatre on the Square

Follow this and additional works at: http://thekeep.eiu.edu/little_theatre_1959_programs



Part of the [Theatre History Commons](#)

Recommended Citation

Little Theatre on the Square, "Fanny" (1959). *1959 Shows Programs*. 1.
http://thekeep.eiu.edu/little_theatre_1959_programs/1

This Book is brought to you for free and open access by the 1959 at The Keep. It has been accepted for inclusion in 1959 Shows Programs by an authorized administrator of The Keep. For more information, please contact tabruns@eiu.edu.

Summer of Musicals

Grand Theatre—Sullivan, Illinois



Betty Oakes in "FANNY"

August 25 through August 30, 1959

Who's Who in the Cast . . .

BETTY OAKES (Fanny) delighted audiences with her portrayal of Rosabella in *The Most Happy Fella* both on Broadway and on tour with the national company. Other New York productions she has graced as a leading lady are *Of Thee I Sing* opposite Jack Carson, *Sandhog* at the Phoenix Theatre, *Where's Charley* and *The Moon is Blue*, in which she served as stand-by for Barbara Beel-Geddes and substituted for her many times. At the country's top musical theatres, including St. Louis and Dallas, she has starred in *Guys and Dolls*, *Plain and Fancy*, *Where's Charley?*, *Blossom Time* and opposite Burl Ives in *Knickerbocker Holiday* as well as with Howard Keel in *Carousel*, in which she has played both Carrie and Julie. Miss Oakes recently starred in the successful off-Broadway production, *She Shall Have Music*. TV viewers will recognize her as one of the principal characters on CBS TV's "Valiant Lady". Miss Oakes has also starred in summer stock productions opposite such players as Darren McGavin, Arthur Treacher, and Sylvia Sidney.

PAUL FLORES (Marius) was applauded by last year's Grand Theatre audiences for his many portrayals, including the role of the King in *The King and I*. He has been heard in some 28 grand opera roles with leading companies throughout the country, has appeared with Dorothy Kirsten and Leonard Warren in *Rigoletto* and was featured as Wagner in a production of *Faust* starring George London of the Met. His rich baritone voice has been heard at the St. Louis Municipal Opera in such productions as *Roberta*, *Oklahoma*, and *Song of Norway*.

EDEN NICHOLAS (Cesear) is a native of Springfield whose singing has taken him to 44 states, Europe and South America, with stops enroute at the St. Louis Myny Opera, Los Angeles and San Francisco Light Opera Companies, and the Saint Paul Civic Opera to sing Ravenal in *Show Boat* and Valentine in *Faust* among other roles. He also tarried long enough in Hollywood to do several films for RKO including *The Enchanted Cottage* with Robert Young and Dorothy McGuire.

DICK SASSO (Panisse) stopped the show at the Grand earlier this season as Nicely-Nicely John-

son in *Guys and Dolls*. At the Edgewater Beach Playhouse, he was seen with Burgess Meredith in *The Circus of Dr. Lao*. As a singer, Mr. Sasso has played The Boulevard Room of the famous Conrad Hilton Hotel in Chicago, and appeared at many state fairs in the outdoor extravaganza, *West-O-Rama*. In addition, he has played major night clubs throughout the midwest and just before coming to the Grand completed an engagement at the Morrison Hotel in Chicago.

FRAN RYAN (Honorine) comes to Summer of Musicals directly from the Highland Park Music Theatre near Chicago where she has been appearing as Sue in *Bells Are Ringing* for the past two weeks. Miss Ryan has been extremely popular in the Chicago area in recent years and was seen earlier this season at the Shady Lane Playhouse in such straight plays as *Tunnel of Love*, *Howie* and the title role in *Monique*. Miss Ryan recently appeared at Drury Lane with Dody Goodman in *The Desk Set* and last season as Maud in *Happy Hunting* at Highland Park. Her commercials have been seen on the Jack Paar Show and she appears in a featured role in the recent film, *North By Northwest* which stars Cary Grant.

ROBERT GWALTNEY (Escartafique) a favorite with Grand Theatre audiences for three full summers has added to his impressive list of characterizations this summer in such roles as Lutz in *The Student Prince*, Sir Francis Beekman in *Gentlemen Prefer Blondes* and Sandor in *Bells Are Ringing*. His extensive background in theatre has been highlighted by appearances with Burl Ives in *The Man Who Came to Dinner* and with Burgess Meredith in *The Silver Whistle*. In New York this year, Mr. Gwaltney was seen off-Broadway at the York Theatre in *The Saintliness of Margerite Kempe*.

JOEL MUNCH (M. Brun) is a veteran of two full seasons at the Grand. Last summer he appeared in a variety of roles, including Lord Brockhurst in *The Boy Friend*, Joe Hardy in *Damn Yankees*, and Jud Fry in *Oklahoma*. He returns to Sullivan, his home town, following engagements at the Red Barn Theatre, Northport, Long Island and the North Shore Playhouse at Bayville, L.I.

GRAND PHARMACY

SULLIVAN, ILLINOIS

Cosmetics — Drugs — Prescriptions
and Fountain Service

NEXT DOOR TO THEATRE

GUY S. LITTLE, JR.
PRESENTS



Musical Play by S. N. BEHRMAN and JOSHUA LOGAN (Based on the trilogy of Marcel Pagnol) Music and Lyrics by HAROLD ROME

Production Directed by
SIDNEY EDEN

Choreography by JOEL SCHNEE Musical Numbers Staged by
SIDNEY EDEN and JOEL SCHNEE

Designed and Lighted by
ANDREW GREENHUT

Musical Direction by
EDDIE McCARTY

Costumes by
JESSIE

CAST

THE ADMIRAL, an eccentric waterfront character	John Kelso
MARIUS, son of Cesar	Paul Flores
ARAB DANCING GIRL	Jeannie Hotard
SECOND MATE	Lee Starkey
HONORINE, Fanny's mother, a fish-stall keeper	Fran Ryan
OYSTER FANCIER	Virginia Summers
FANNY, daughter of Honorine	Betty Oakes
CHARLES	Dick Stephens
CLAUDETTE, friend of Fanny	Karla Fleck
NANETTE, friend of Fanny	Betty Chambers
PANISSE, wealthy sailmaker	Dick Sasso
CESAR, proprietor of cafe on waterfront	Eden Nicholas
ESCARTIFIQUE, a ferryboat captain	Robert Gwaltney
M. BRUN, customs inspector recently returned from Paris	Joel Munch
AN ARAB	Dick Lamb
POSTMAN	Andrew Greenhut
CESARIO	Leon Bolin
GARAGE OWNER	Larry Hodges
PRIEST	Andrew Greenhut

THE SINGING AND DANCING ENSEMBLE — Betty Chambers, Jenny Cochenour, Myrna Ems, Karla Fleck, Clare Johnson, Virginia Summers, Dick Lamb, Jan Munch, Lee Starkey, Dick Stephens, Jerry Taflinger.

FANNY is presented through arrangement with Tams-Witmark Music Library, Inc. New York.

L. W. McMullin
Funeral Home

Dial 4100

Sullivan, Ill.

INSURANCE CLAIMS

—can be handled without red tape or delay when you insure with your local independent agent.

Wood Insurance and Realty Co.

7 West Harrison St. — Sullivan

"Y" Drive-In

Air Conditioned Dining Room
Seating Capacity 100

**Chicken Family Style
Steaks, Chops, Seafood**

Jct. 121 and 32

Hardware State Bank

LOVINGTON, ILL.

**Always
Courteous Service**

Grow—Grow—GROW with



Liquid...

FERTILIZER

The largest producers of complete Analysis Liquid Fertilizer in the U.S.

**PLANTS LOCATED AT
SULLIVAN—HARVEL—ROCHESTER—EL PASO, ILLINOIS**

Everything to Build Anything

Gauger Lumber Co.

Who's Who (Continued) . . .

BETTY CHAMBERS (Nanette) has appeared in every Grand Theatre production to date, as a dancer, actress and singer. Miss Chambers, has spent the past year dancing professionally in New York City. Her roles here last summer included Poopsie in *The Pajama Game*, and Topsy in *The King and I*. Miss Chambers has delighted audiences this season as Lizette in *Naughty Marietta* and as the "Lollypop Girl" in the *High Button Shoes* Ballet.

*MYRNA EMS, a theatre major at the University of Nebraska, has graced the Grand stage in all ten productions this season.

*JEANNIE HOTARD (The Dancing Girl) appeared in many featured roles here last summer, and has been seen this year as Adelina in *Song*

of Norway, Zubbediya in *Kismet*, and Princess Margaret in *The Student Prince*.

*CLARE JOHNSON, from Cerro Gordo, is a student at DePauw and another ten-show veteran.

*JOHN KELSO (The Admiral) has managed to play 18 roles in ten shows, including Father Grieg in *Song of Norway*, Uncle Willie in *High Button Shoes* and the Governor in *Naughty Marietta*.

*DICK LAMB (The Arab) has played many featured roles this season beginning with Inspector Barnes in *Bells Are Ringing* and including Harry the Horse in *Guys and Dolls* and Oogle in *High Button Shoes*.

KEN'S SUPERWAY

Moultrie County's Largest
Food Store

Open 7 Days Until
Midnight

Compliments of Reed's Sullivan Greenhouses, Inc.

We Are Your FLORIST'S
TELEGRAPH DELIVERY
FLORIST

Phone 4216 403 E. Water

Courtesy of

Sangamon Grace Ammonia Co. Fertilizer

417 S. Oakland — Decatur

SULLIVAN PLANT
Phone 4121

LOVINGTON PLANT
Phone 76

CANDYLAND CAFE

First Door West of Theatre

Air Conditioned
Dining Room Service

**Steaks, Seafood,
Luncheons**

Enjoy Good Food in a Friendly
Atmosphere

Compliments of
**BROWN
SHOE COMPANY**
Sullivan, Ill.

Synopsis of Scenes

The entire action takes place in and around the Old Port of Marseilles over a period of years. The time is not so long ago.

ACT ONE

Scene 1: The Waterfront of Marseille.
Scene 2: Hakim's Cellar.
Scene 3: Cesar's Bar de la Marine.
Scene 4: The Sailing.
Scene 5: Cesar's Bar.
Scene 6: The Waterfront.
Scene 7: Panisse's Sail Shop.
Scene 8: The Wedding.

Scene 9: The Waterfront.

ACT TWO

Scene 1: The Nursery.
Scene 2: Panisse's Living Room.
Scene 3: Vignettes.
Scene 4: Cesario's Room
Scene 5: The Circus.
Scene 6: A Garage in Toulon.
Scene 7: Panisse's Living Room.

Musical Numbers

ACT ONE

OCTOPUS SONG The Admiral
RESTLESS HEART Marius and Male Ensemble
NEVER TOO LATE FOR LOVE Panisse and Ensemble
COLD CREAM JAR SONG Panisse
WHY BE AFRAID TO DANCE Cesar
Danced by Cesar, Marius, Fanny, Ensemble

Welborn's Rexall Drug Store

Prescription Service
Free Delivery

Spice Island Spices
Fannie May Candies
Second Door West of Theatre

S. D. CUMMINS

Sullivan's Oldest Hardware Store

**Paints, Electrical
Supplies, Plumbing**

Phone 3123
East Side Square

MOTEL MILROY

MILDRED AND ROY PICKEN, Props.

Rts. 121 and 32

Box 266

Sullivan Ill.

SULLIVAN GRAIN COMPANY ELEVATORS

EAST END ELEVATOR Sullivan
 WEST END ELEVATOR Sullivan
 MACON GRAIN CO. Macon
 LAKE FORK ELEVATOR Mt. Pulaski

Grain—Coal—Cob Litter—Mulch

NEVER TOO LATE FOR LOVE (Reprise) Cesar, Panisse and Honorine
 SHIKA, SHIKA Dancing Girl, Arab and Ensemble
 WELCOME HOME Cesar
 I LIKE YOU Marius, Cesar
 I HAVE TO TELL YOU Fanny
 FANNY Marius
 THE SAILING Fanny, Marius, Cesar and Ensemble
 OYSTERS, COCKLES AND MUSSELS Ensemble
 PANISSE AND SON Panisse
 WEDDING DANCE Ensemble
 FIRST ACT FINALE Ensemble

ACT TWO

BIRTHDAY SONG Fanny, Honorine, Ensemble
 TO MY WIFE Panisse
 THE THOUGHT OF YOU Marius and Fanny
 LOVE IS A VERY LIGHT THING Cesar
 OTHER HANDS, OTHER HEARTS Fanny, Cesar, Marius
 FANNY (Reprise) Cesar, Fanny, Marius
 MONTAGE Ensemble
 BE KIND TO YOUR PARENTS Fanny, Cesario
 CESARIO'S PARTY (Circus Ballet)
 Clowns Karla Fleck, Jan Munch
 Acrobats Betty Chambers, Jerry Taflinger
 Ringmaster Dick Lamb
 The Pony Virginia Summers, Lee Starkey
 WELCOME HOME (Reprise) Cesar, Panisse

SHELBY'S CAFE

Smorgasbord—Short Orders

Half Block East of Southeast Corner Square
 8:30 A.M. to 8:30 P.M.

DUNSCOMB'S FURNITURE

Everything for the Home

NEAR THE THEATRE
 SULLIVAN

Moultrie County News

FIRST in
Circulation
 FIRST in
Advertising Lineage
 FIRST in
News Coverage
 IN MOULTRIE COUNTY

A F C O
Heating—Air Conditioning

Engineered Heat Co.

18 West Harrison Sullivan
Phone 3176

Sheet Metal Roofing

Russell M. Harshman Co.

Sullivan, Ill. Phone 4235

READY MIXED CEMENT
CONTRACTORS

Basements, Walks, Drives,
Foundations and Patios
Floors, Porches and Steps

PRODUCTION STAFF

STAGE MANAGER.....Bob Fahey ASSISTANT DIRECTOR.....Guy S. Little, Jr.
ASSISTANT CHOREOGRAPHER..Betty Chambers ASSISTANT STAGE MANAGER..Jerili Little
REHEARSAL PIANISTS...Sandra York and Pat Iocca PROGRAM EDITOR...John Kelso
LOBBY DECOR AND ADVERTISING ARTDick Stephens
ASSISTANT TO THE DESIGNERRon Meadows
SCENIC CREW....Terry Roney BOX OFFICE...Lois McIlwain and Inis Little
HEAD USHERSMarilyn Slover and Mary Ann Kite

CREDITS: Spinet Pianos used through the courtesy of Samuel Music Co., Effingham, Ill. Dressing rooms courtesy of Best Clinic. Fabrics by Michael Bartlett. Principals' costumes for *Song of Norway*, *Gentlemen Prefer Blondes* and *Fanny* from Van Horn and Son, Philadelphia. Special thanks to Dunscomb's Furniture, Cummins Hardware, Gauger Lumber Co., Elzy's Flower Shop, and the Masonic Home for their assistance throughout the season.

The Management of the Grand Theatre "Summer of Musicals" expresses its sincere appreciation for the great help and cooperation the merchants of Sullivan have given the theatre this season by advertising in the weekly programs.

STUBBFIELD & SON

**BUICK
PONTIAC
VAUXHALL**

Sales and Service

WADE'S

DRIVE-IN CLEANERS

Cold Storage Available

**Compliments of
A & W Drive-In**

After the Show—Drive in for
Fast Service on All Kinds of
Sandwiches and Cold Drinks.

Jct. 121 and 32

Rhodes Lumber Co.

**Lumber—Roofing
Cement**

Paint—Hardware

1117 W. Jackson St.
Sullivan, Ill.

**COMMUNITY
INDUSTRIES
ASSOCIATION**

**Compliments of
Steffen's
Federated Store
Your
S. and H. Green Stamp
Store**

Phone 3142 Sullivan, Ill.

Who's Who (Continued) . . .

*JAN MUNCH, has appeared this season in such roles as Von Asterberg in *The Student Prince*, Rusty Charlie in *Guys and Dolls*.

*DICK STEPHENS (Charles) is in his third season at the Grand as dancer, actor, singer and the creator of the posters and decor which greet our audiences in the lobby. His roles include Tito in *Song of Norway* and the tap dancer in *Say, Darling*.

*JERRY TAFLINGER has been a featured dancer here for two seasons. This year he appeared in such dance roles as Freddy in *Song of Norway* as well as North Wind and The Minstrel in that production's ballet.

LEON BOLIN (Cesario) is the youngest of the Grand's featured players. This season he appeared in *Song of Norway* and as Stevie Longstreet in *High Button Shoes*. His past roles include the crown prince in *The King and I*.

JENNY COCCHENOUR appeared earlier this season in *Song of Norway*.

KARLA FLECK (Claudette) was featured in the *Song of Norway* Ballet as The Maiden Norway, and also danced in *High Button Shoes* and *Gentlemen Prefer Blondes*.

ANDREW GREENHUT (Postman, Priest) is designer for the Summer of Musicals and an actor when called upon. Earlier in the season, he appeared as Jawan, the desert bandit, in *Kismet*.

LARRY HODGES (Louis) has been seen this season in *Bells Are Ringing*, *Kismet*, and as Angie the Ox in *Guys and Dolls*.

LEE STARKEY (The Second Mate), a student at the University of Tennessee was seen as Rudolph in *The Student Prince* and the Maitre 'd in *Gentlemen Prefer Blondes*.

VIRGINIA SUMMERS has been featured in musical numbers such as "Freddy and His Fiddle" in *Song of Norway*.

*Have appeared in all productions this season.

**SULLIVAN LOCKERS
HOME KILLED MEATS**

Hamilton's Super Food
"Everything in Food"

ATCHISON OIL COMPANY

**MOBIL PRODUCTS
MOBIL HEATING FUEL**

Sullivan 6276, 6271

Arthur 262

Morrow's Jewelry

China, Crystal, Silver

6 South Washington
Sullivan, Illinois

**Compliments
Buxton Style Shoppe
Ready-to-Wear and
Accessories
North Side of Square**

**Compliments of
TOM WEST, Inc.**

**Chevrolet
Cadillac**

NEWS & SPORT SHOP

13 W. Harrison — Sullivan, Ill.

'The Outdoorsmen
Headquarters'
Fishing Tackle, Hunting
Equipment, Johnson Out-
board Motors, Arkansas
Traveler Boats

SHASTEEN MOTOR COMPANY

**CARS — TRUCKS
SALES and SERVICE**

Phone 6142

14 N. Main

Sullivan, Illinois

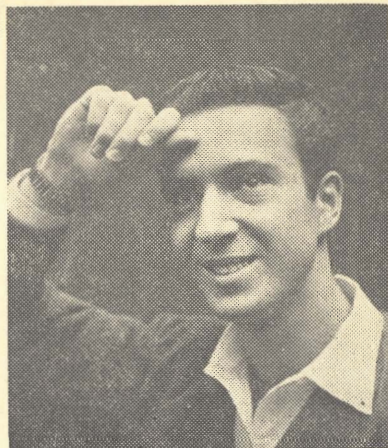
Thank You!

At the close of this, our third season in Sullivan, I should like to express, in part, my deep and sincere appreciation and that of the entire company for the wonderful cooperation, encouragement, and loyal support you as theatre goers have given us.

For a number of years, my greatest ambition was to operate my own legitimate musical theatre. The past three summer seasons at the Grand have been most exciting and stimulating for the cast, the production staff and myself most of all. The opportunity of sharing what is to me the most wonderful business in the whole world with the people of my home town and all of central Illinois, has been most gratifying.

During the past three summers we have presented a total of twenty-nine musical productions on the stage at the Grand Theatre, and with the final curtain of the 1959 season, a total of 171 performances will have been viewed by central Illinois audiences. We sincerely hope to return to this area for another season in 1960. Your continued support, help and cooperation will be so very greatly appreciated.

Cordially,
GUY S. LITTLE, Jr.



1957

BRIGADOON
WONDERFUL TOWN
ROBERTA
KISS ME, KATE
SONG OF NORWAY
CALL ME MADAM
WISH YOU WERE HERE
FINIAN'S RAINBOW
GUYS AND DOLLS

1958

THE PAJAMA GAME
ANNIE GET YOUR GUN
SHOW BOAT
THE KING AND I
THE BOY FRIEND
PLAIN AND FANCY
CAN-CAN
THE DESERT SONG
DAMN YANKEES
OKLAHOMA

1959

BELLS ARE RINGING
KISMET
GUYS AND DOLLS
THE STUDENT PRINCE
SAY, DARLING
HIGH BUTTON SHOES
NAUGHTY MARIETTA
SONG OF NORWAY
GENTLEMEN PREFER
BLONDES
FANNY



First
National Bank
of
Sullivan

"Always A Friendly Welcome"

MEMBER F. D. I. C.