

Spring 1-15-2014

ENG 1002G-001-010: Composition and Literature: The Human Experience

Mary Dwiggins
Eastern Illinois University

Follow this and additional works at: http://thekeep.eiu.edu/english_syllabi_spring2014



Part of the [English Language and Literature Commons](#)

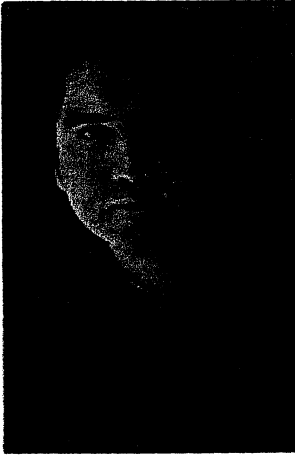
Recommended Citation

Dwiggins, Mary, "ENG 1002G-001-010: Composition and Literature: The Human Experience" (2014). *Spring 2014*. 15.
http://thekeep.eiu.edu/english_syllabi_spring2014/15

This Article is brought to you for free and open access by the 2014 at The Keep. It has been accepted for inclusion in Spring 2014 by an authorized administrator of The Keep. For more information, please contact tabruns@eiu.edu.

ENG1002: Composition and Literature: The Human Experience

Spring 2014



Sherman Alexie

Instructor: Mary Dwiggin

Office: Coleman 3015

Office hours: 9:00-9:50 MWF and
11:00-11:50 M

Also by appointment

Email: madwiggin @eiu.edu

Home Page:

<http://ux1.eiu.edu/~madwiggin>



The Brothers Grimm

Texts:

Kennedy, X.J. and Dana Gioia. Literature

Griffith, Kelley. Writing about Literature

Speigelman, Art. Maus I & II

Creech, Sharon Love That Dog

Description: English 1002G. Composition and Literature is a writing course designed to improve skills in critical thinking and analytical expression based on the reading of literary texts. Your work with the following literary genres—folktale, fiction, graphic novel, poetry, and drama--will involve reading, discussing, analyzing, and writing about the basic components of these types of literature. As in 1001G, attention is given to the on-going development of student writing, including effective expression, clear structure, adequate development, and documentation of sources. Prerequisite: English 1001G.

Objectives: By the end of Eng1002, students will be able to

- Write expository and persuasive texts in which paragraphs, sentences, and words develop a central idea that responds to the reading of literary works. As in 1001G, these papers should reflect an understanding and command of recursive writing processes: generating and prewriting strategies for formulating a thesis, methods for planning and drafting a paper, strategies of revising for clarity and adequate

development, and means for polishing and editing. These papers should demonstrate consideration and employment of effective methods of organization. At least one paper should introduce students to methods of library, online and/or field research, entail the use of primary and secondary source materials drawn from both online and library sources, and reflect current principles of documentation.

- Write focused, adequately developed paragraphs and sentences in standard written English that are direct, economical, free of ambiguity, structurally appropriate for the ideas expressed and suitable to the purpose of the text.
- Develop the ability to evaluate and critique their own and their peers' writing.
- Read poetry, fiction, and drama expressing a wide range of cultural perspectives and to think critically and write analytically about them.
- Engage in reading and writing experiences about literature so as to establish a foundation for continued social, cultural, intellectual, and aesthetic discovery and appreciation.

Guidelines: All students enrolled in English 1002G should have passed English 1001G or must have fulfilled the requirement through transfer credit or through the CLEP proficiency examination.

Course requirements: It is essential that you keep up with the reading for this course. Plan to spend about two hours reading and reviewing each day's assigned material. Sometimes reading through the material once is not enough. You are expected to come to class with comments, questions, and ideas about the day's assignment. Questions may be assigned. This is not a "lecture" course; so much of the period will be devoted to classroom discussion of the day's reading material. Participation is part of your grade, too.

Quizzes: Quizzes on many of the daily readings will be given --some announced in a previous class session, most not. Remember that the reading and assignment work is to be completed by the date shown on the on-line schedule. We will have 9 pop quizzes and I will drop the lowest grade. Because the quizzes will be given before the discussion of the reading, you will not be able to make up quizzes if you are absent or late to class. Each quiz is worth 10 points for a total of 80 points.

Papers: You will write two essays this semester: Essay # 1 will cover fiction and will be written outside of class. We will have conferences in order to discuss the rough draft of your first essay. You may, of course, schedule conferences regarding ANY of your assignments. You will have two choices of topics for Essay # 2 which will cover drama. Essay #2 will be written in class. Papers are worth 75 points each.

Response papers: You will write 5, one full-page, single spaced response papers. One response topic will be assigned on a specific day. You may choose the other works to respond to by identifying the * sign on the on-line schedule. You must have at least one response for each genre we study—fiction, drama, and poetry. 10 points each

Group Presentations: Groups will be responsible for the reading of the day. This entails preparing a 40-minute presentation and class discussion, discussing the major issues in the reading, background of the author, and review of criticism generated by the work. A PowerPoint presentation or visuals of some sort will be required. A found poem generated by the group must also be prepared by all members of the group. The students will discuss their plan for the visual component with me prior to the presentation. This is worth 50 points. More about this.

Literature review: This is a short summary of the literature generated by critics on one short story. This is worth 30 points. More details will be given.

Midterm and final: There will be two exams: one covering fairytales, fiction, one covering drama and poetry, the last of which will count as the final exam. All examinations will consist of at least 50% essay questions. They are worth 50 points each.

Poetry Slam: You will write your own original poetry and analysis. This is worth 20 points.

Participation: You can generate 20 points for class participation. Much of this includes discussion in class.

Other requirements

Class Attendance: Attendance is required. Interaction among members of the class is vital to the learning experience; if you aren't here, it can't happen. With the exception of rare and extreme circumstances, I do not distinguish among kinds of absences for attendance purposes. Contact or see me immediately if rare and extreme circumstances arise which will affect your class attendance.

You are expected to be present every day your class meets, but to accommodate accidents, illnesses, and emergencies; I allow 4 absences without penalty. Absences beyond this limit it is considered excessive and result in grade reductions. Reductions will be taken on a percentage basis from the total number of points possible in the course. Students are expected to arrive in class on time in order to be counted present.

For MWF classes, the following policy will apply: you may miss 4 times without an automatic grade reduction; 5 absences = a final grade reduction of 5%; 6 absences = a final grade reduction of 10%; 7 absences = a final grade reduction of 20%; and 8 or more absences = failure of the course.

Academic Honesty Policy: All students are expected to uphold professional standards for academic honesty and integrity in their research, writing and related performances. Academic honesty is the standard we expect from all students. Any teacher who discovers an act of plagiarism – “The appropriation or imitation of the language, ideas, and/or thoughts of another author, and representation of them as one’s original work” – has the right and the responsibility to impose upon the guilty student an appropriate penalty, up to and including immediate assignments of a grade of F for the assigned essay and a grade of F for the course, and to report the incident to the Judicial Affairs Office. Respect for the work of others should encompass all formats, including print, electronic, and oral sources.

Read the Student Handbook for further explanation. If you have difficulty with any assignment in this course, please see me rather than consider academic dishonesty. The following apply specifically to academic misconduct in this course:

- **Plagiarism:** The appropriation, theft, purchase, or obtaining by any means another’s work, and the unacknowledged submission or incorporation of that work as one’s own. Appropriation includes the quoting or paraphrasing of another’s work without giving credit.
- **Collusion:** Prohibited collaboration with another in preparing work.
- **Fabrication/Falsification:** Unauthorized alteration or invention of any information or citation in an academic exercise. Falsification involves altering information for use in any academic exercise. Fabrication involves inventing or counterfeiting information for use in any academic exercise.
- **Multiple Submissions:** The submission by the same individual of substantial portions of the same work (including oral reports) for credit more than once in the same or another course without authorization.
- **Complicity in academic misconduct:** Helping another to commit an act of academic misconduct.

Turnitin.com may be useful to students in addressing any plagiarism concerns they may have. Eastern Illinois University students may learn more about how to properly cite sources and maintain the highest degree of academic integrity with the Turnitin online program. We may use Turnitin this semester if I feel it is beneficial.

Grading scale:

Grades for individual assignments will be determined according to the Guidelines for Evaluating Writing assignments in EIU’s English Department (attached). Be sure to read these guidelines fully – they will help you to understand what is expected of your work.

Keep in mind that adequate, average work will receive a C, and excellent work will receive an A. The possible final grades for English 1002G are A, B, C, NC and INC. In other words, you cannot pass this course with D-level work. If your grade for the course is less than a C, you will receive an NC for the course and you must then retake the entire course to receive credit. Please remember that your grade for an essay will be determined not just by your final draft, but also by your revision work.

As you can see, you can receive a total of 550 points. Grade will be assigned as followed:

495-550= A range

440-494=B range

385-439=C range

384 or below =NC

Expectations for Classroom Behavior

Faculty members have the responsibility and the authority to maintain a productive educational environment in the classroom. It is the responsibility of the student to practice conduct conducive to learning by being prepared, prompt, attentive, and courteous in the classroom and by accepting policies set forth by the professor to maintain an academic decorum.

Acceptable classroom behavior is behavior that encourages critical inquiry and thought and promotes a shared community of learners. Focused attention on the tasks at hand and respect for fellow peers are expected. During classroom discussions and presentations, you need to listen carefully to others and be prepared to add relevant insight and responses.

Behavior that repeatedly interferes with my ability to teach class or the ability of other students to benefit from the instructional program include: constant idle chit-chat, idleness, irrelevant use of computers, routine late arrival or early departure, inappropriate interruptions (such as back-pack shuffling or cell phone use), use of threatening language and personal insults toward the professor or other students. This behavior is inappropriate and will not be tolerated and may be subject to appropriate disciplinary measures which may include expulsion from class.

Electronic Writing Portfolio (EWP): English 1001G is a writing centered course. All EIU students are required to submit essays to their Electronic Writing Portfolios and essays written in this course can fulfill this requirement. To submit an essay for the EWP go to the EWP website, click "Submission Form." Read the instructions and then complete the form online. <https://www.eiu.edu/~cats/EWP/student/studentLogin.php>

Writing Center

You can receive valuable help with your writing by visiting Eastern's Writing Center. The Writing Center is a free, one-on-one service staffed by trained graduate assistants who tutor students on all types of writing related activities for improving writing, reading, and critical thinking processes in a friendly, relaxed, and supportive environment. The Writing Center helps with all aspects of writing, from brainstorming for ideas to overcoming writer's block, to the final editing and proofreading strategies, as well as advice for drafting, expanding and organizing your writing. The Center also offers help with proper documentation style and plagiarism concerns. Remember to bring with you your assignment sheet and/or your draft for each of your writing projects. The Center is located Coleman Hall room 3110. Although walk-ins are accepted, scheduled appointments have priority and are recommended. For an appointment or to ask a question from the grammar hotline call 581-5929.

Special needs:

Disability Accommodation Policy

Please address any special needs or special accommodations with me at the beginning of the semester or as soon as you become aware of your needs. If you are seeking classroom accommodations under the Americans with Disabilities Act, you should submit your documentation to the Office of Disability Services (581-6583) as soon as possible.

Disclaimer: If necessary, the syllabus can change, so if you feel we are going too fast or too slow, tell me and we can change things.