

Eastern Illinois University
The Keep

Coles County Poverty Data Project

Sociology/Anthropology

2013

Coles County in Comparison to Regional, State, and U.S. Poverty Levels

Michael D. Gillespie Ph.D.

Eastern Illinois University, mgillespie@eiu.edu

Follow this and additional works at: <http://thekeep.eiu.edu/colescountypovertydatapoint>



Part of the [Sociology Commons](#)

Recommended Citation

Gillespie, Michael D. Ph.D., "Coles County in Comparison to Regional, State, and U.S. Poverty Levels" (2013). *Coles County Poverty Data Project*. 10.

<http://thekeep.eiu.edu/colescountypovertydatapoint/10>

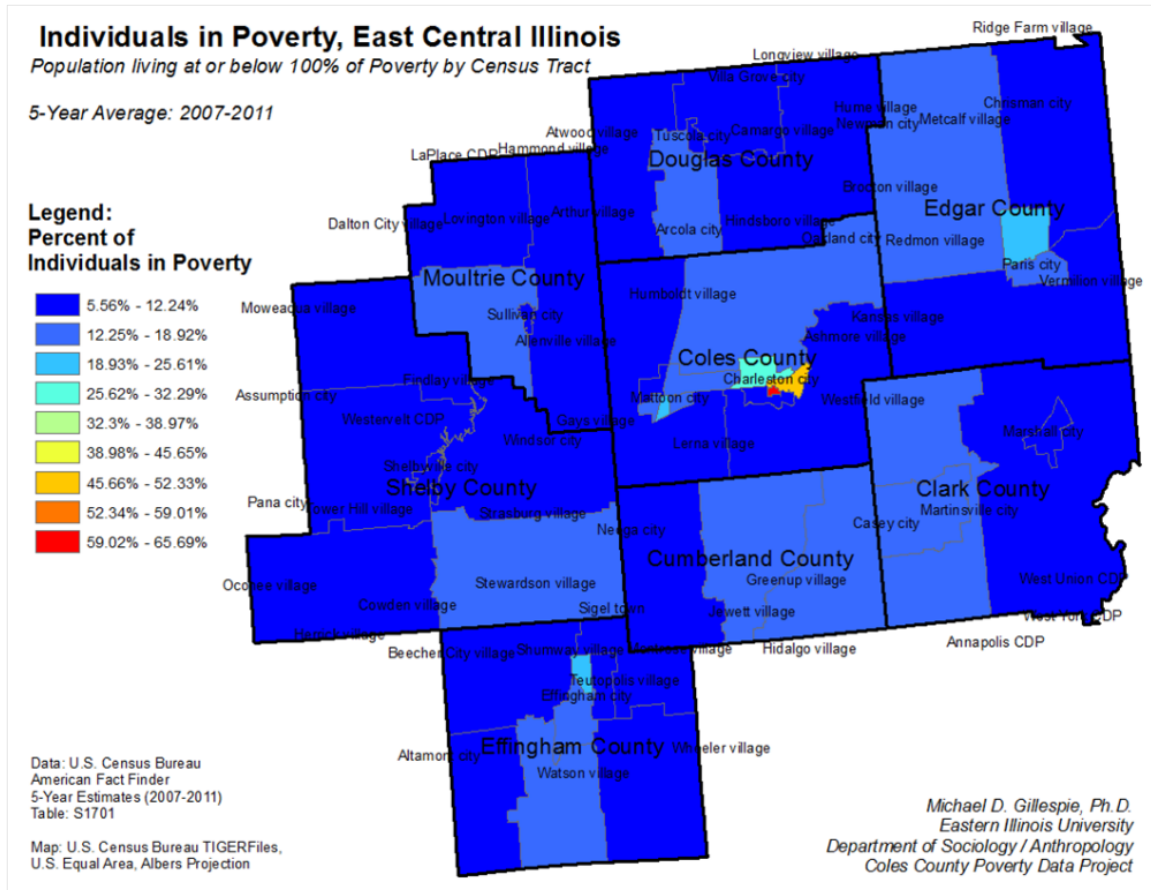
This Article is brought to you for free and open access by the Sociology/Anthropology at The Keep. It has been accepted for inclusion in Coles County Poverty Data Project by an authorized administrator of The Keep. For more information, please contact tabruns@eiu.edu.

Coles County in Comparison to Regional, State, and U.S. Poverty Levels

Charleston/Mattoon μ SA

- Micropolitan (μ) Statistical Area:
 - Adjacent counties or county equivalents
 - Nonmetropolitan
 - One urban core area: 10,000-50,000 population
 - Adjacent territory \rightarrow high degree of social and economic integration with the core
 - This projects considers all counties adjacent to Coles

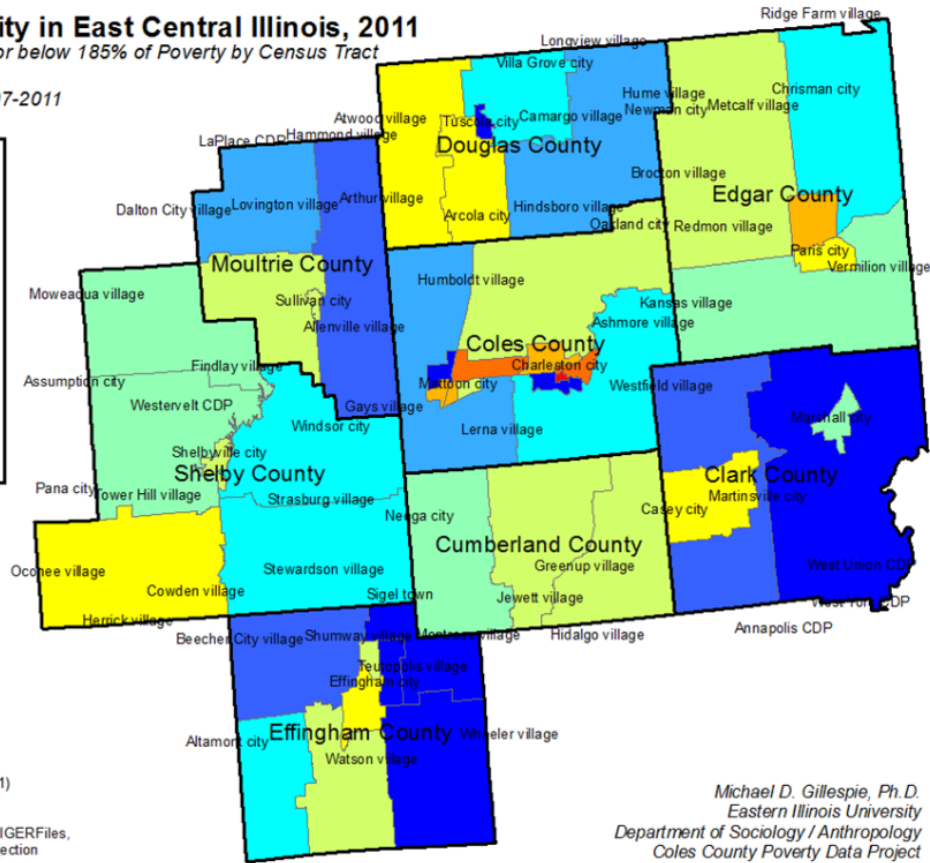
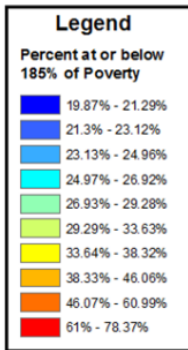
Regional, State, and Country-Wide Comparisons



Food Insecurity in East Central Illinois, 2011

Population living at or below 185% of Poverty by Census Tract

5-Year Average: 2007-2011



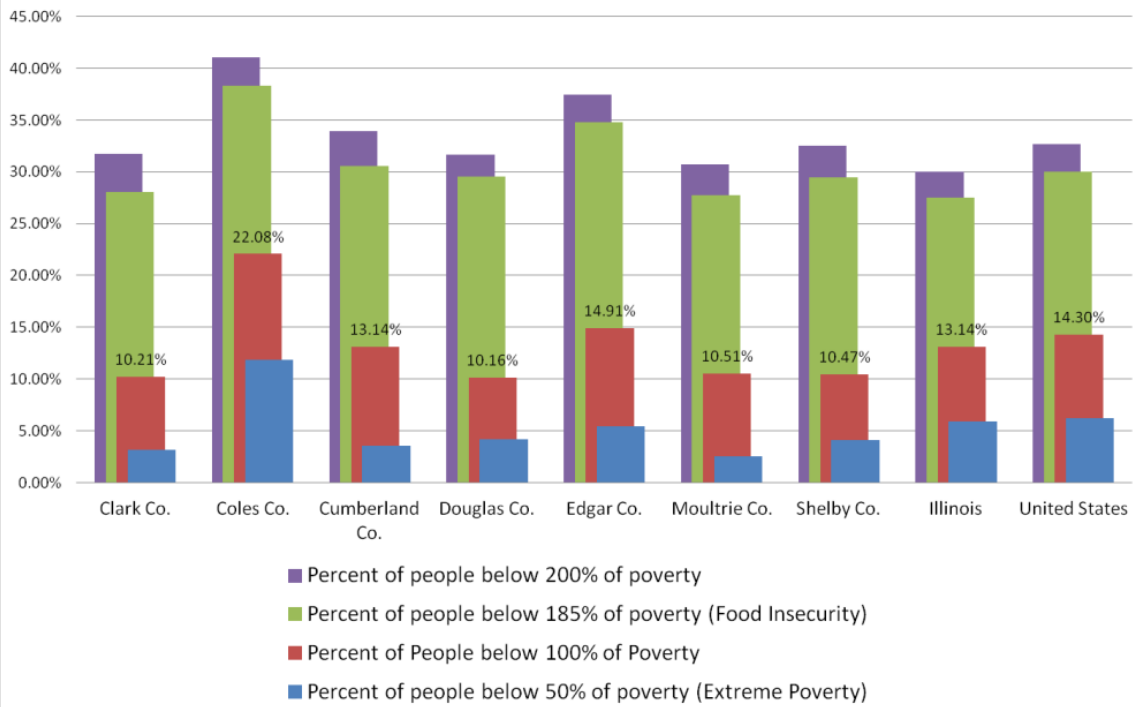
Data: U.S. Census Bureau
American Fact Finder
5-Year Estimates (2007-2011)
Table: S1701

Map: U.S. Census Bureau TIGERFiles,
U.S. Equal Area, Albers Projection

Michael D. Gillespie, Ph.D.
Eastern Illinois University
Department of Sociology / Anthropology
Coles County Poverty Data Project

Percent of Population by Levels of Poverty East Central Illinois Counties

2007-2011 ACS, Table S1701



Percent of Poor Households by SNAP Benefits Status East Central Illinois Counties

2007-2011 ACS, Table S2201

