

7-1-1989

Tarble Arts Center Newsletter July 1989

Tarble Arts Center

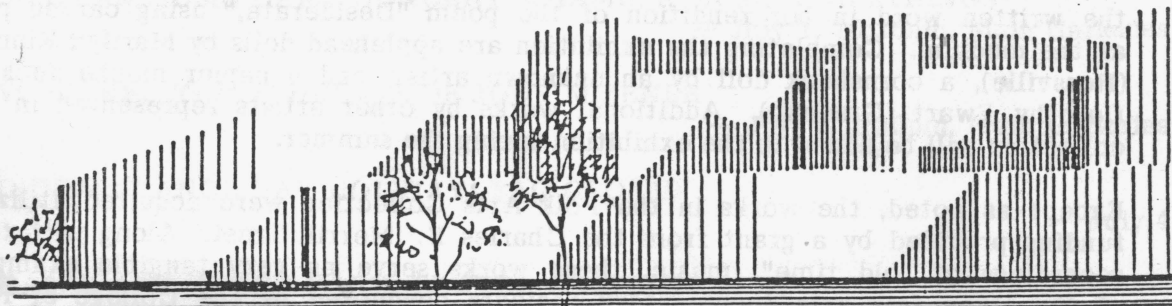
Follow this and additional works at: http://thekeep.eiu.edu/tarble_newsletter

Recommended Citation

Tarble Arts Center, "Tarble Arts Center Newsletter July 1989" (1989). *Tarble Arts Center Newsletter*. 13.
http://thekeep.eiu.edu/tarble_newsletter/13

This Article is brought to you for free and open access by the Tarble Arts Center at The Keep. It has been accepted for inclusion in Tarble Arts Center Newsletter by an authorized administrator of The Keep. For more information, please contact tabruns@eiu.edu.

TARBLE ARTS CENTER



NEWSLETTER

JULY 1989

16

EXHIBITION

ILLINOIS FOLK ARTS FROM THE COLLECTION

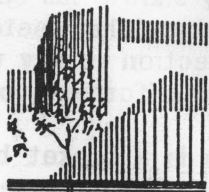
— through August 13, Main Galleries

Contemporary eastcentral and southeastern Illinois folk arts make up the single largest sub-collection of the Tarble Arts Center Permanent Collection. This exhibition showcases the depth and variety of the Folk Arts Collection. Presented are familiar works and pieces not recently exhibited, ranging from utilitarian to the fanciful. Probably the best known artist represented is the late Jennie Cell. Along with Cell's "Washing and Fishing" are works by Ruby Beck (Cowden), Atta McLain, and two paintings that have not been exhibited for a few years — an oil painting of a crow by Minnie Burrows of Neoga, donated to the collection by Ben Watkins, and "Plantin' 'Taters" by E. Ward, a gift of Mr. and Mrs. Phillip Settle. "Minnows," a carved and painted box by Arthur Walker of Sullivan, was recently acquired for the collection. (Mr. Walker was one of the folk arts exhibitors at this year's "Celebration.") Though Danville artist Raymond Heyduck's "Skaters" has been frequently shown, his carving of a wild boar is also presented, as are carvings by Carl Eswine (Shawneetown), and Alvin Greer (Mt. Vernon). And no Tarble Folk Arts Collection survey would be complete without a selection of works by the late Ferd Metten (formerly of Teutopolis).

Of a more functional nature is a basket by Melvin Nobe (Okawville), cane and rush stools by Barbara and Carroll Montague (Mattoon), a large hoop net by Theron Meyers (Newton), and a cupola by Rudolph Grosso (Danville). In quilting there are pieces by Cora Meek (Mattoon), Louise Hageman (Danville), Virginia Buckner (Danville), and an antique quilt by Sarah Dollar from the 1840's. Three quilts dating from the turn of the century, loaned by family of Pauline Greenwalt Malehorn, are also on exhibition. Other fiber works include woven and braided rugs by Lola Wade (Ingraham), hooked rugs by Alice Stugell (Elbridge) and Zora Moore (Oakland), and a crocheted rug by Zora Moore. A different application

for crocheting is found in Silvia Dell Layton Ethington's "The Lord's Prayer," donated by the family of James Ethington. Alma Tarran (Irving) also presents the written word in her rendition of the poem "Desiderata," using carved pine as the medium. Completing the exhibition are applehead dolls by Marilyn Kinnett (Rossville), a cornshuck doll by an unknown artist, and a papier mache duck by Dorothy Ewart (Greenup). Additional works by other artists represented in the collection will be added to the exhibition during the summer.

Except as noted, the works in the Folk Arts Collection were acquired utilizing funding provided by a grant from the Charles E. Merrill Trust. Along with tape recordings of "old time" music, these works serve as very tangible examples of the three folk arts documentary projects conducted by the College of Fine Arts, and headed by Phillip Settle, the former Assistant Dean. The projects were conducted between 1976 and 1985, and were funded by grants from the National Endowment for the Arts. As noted by Dr. Jens Lend, folklorist for the documentary projects, "The folk arts of eastcentral and southeastern Illinois reflect the nature of the area as a transition between Northern and Southern culture. Whirligig yard art, rib baskets, and woven rag rugs are Southern; applehead dolls, plaited baskets, and hooked rugs are Northern. What distinguishes the folk arts from other untutored expressions is a traditional and informally shared aesthetic. Inherent in folk expression, and often passed from one generation to another, is a traditional aesthetic philosophy, shared by a group, that gives pleasure when communicated through folk-derived processes." The recent explosion of interest in the folk arts nationally certainly has to do with "the pleasure communicated" in the honesty of presentation and the immediacy of the experience for the creator and viewer alike.



12
EVENTS

EASTERN MUSIC CAMP CONCERT: CHAMBER MUSIC FOR STRINGS*

— July 1, 10:30am, Main Galleries

VOICE RECITAL: STUDENTS OF JODY MIZENER

— July 2, 1:30pm, Main Galleries

INDEPENDANCE DAY HOLIDAY: TAC CLOSED

— July 4

CASEY ART-IN-THE-PARK: PEWTER CASTING

— July 6, 10am, Fairview Park, Casey

Local artist and sometimes EIU Art instructor Ernie Whitworth will assist participants in making an art palette pin. The fee is \$1.00, and all materials are provided. The workshop, held at the Lion's Shelter, is open to anyone, ages 5 on up. Call Lora Summerville at 923-5594 for more information; co-sponsored by the Casey Area Arts Council and the Tarble Arts Center.

CHARLESTON COMMUNITY THEATRE AUDITIONS: '23 SKIDDOO

— July 9 & 10, 7-10pm, Classroom

For information on auditioning for '23 Skiddoo: A Roaring Review of the 1920's, call Scott Saegesser at 234-8919 after 4pm. This production is co-sponsored by the Charleston Community Theatre and the Tarble Arts Center.

HIGH SCHOOL SUMMER ART CAMP

— July 9 - 14

Under the direction of Dr. Hannah Eads, Art Camp participants will be presented with evening programs July 9 and 10, attend all-day workshops in the Classroom July 10-14, and have a farewell reception 3-4pm on July 14 in the Main Galleries. Sponsored by the EIU Art Department and the School of Adult and Continuing Education.

SUMMER OF EXCELLENCE: STORYTIME

— July 10 - 13 & 17 - 20, Brainard Gallery

Instructors June Waller and Pat Beasley will bring familiar children's stories to life through drawing, finger plays, and acting. Open to children ages 4 and five; the fee is \$34. For information contact the School of Adult and Continuing Education, sponsor of the class, at 581-5114.

CASEY ART-IN-THE-PARK: HOUSE OF FOUND OBJECTS

— July 13, 10am, Fairview Park, Casey

Donna Meeks and David Pooley, TAC's Curator of Education and Registrar, will lead participants in creating a sculpture installation which will remain on display at the park for a month. Please bring a found object with you. The fee is \$1.00,

and the workshop is open to anyone ages 5 and up. See July 6 above for more information.

EASTERN MUSIC CAMP CONCERT: SENIOR STRING ORCHESTRA*

— July 15, 10:30am, Main Galleries

CASEY ART-IN-THE-PARK: ENVIRONMENTAL SCULPTURE

— July 20, 10am, Fairview Park, Casey

Jeff Boshart, Assistant Professor of Art at EIU, will conduct an environmental sculpture workshop. The fee is \$1.00, and the workshop is open to anyone ages 5 and up. See July 6 above for more information.

EASTERN MUSIC CAMP CONCERT: JUNIOR STRING ORCHESTRA*

— July 22, 10:30am, Main Galleries

CASEY ART-IN-THE-PARK: WATERCOLOR MINIATURES

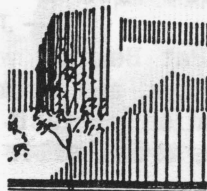
— July 27, 10am, Fairview park, Casey

Casey Area Arts Council member Lagetta Dalrymple will conduct a workshop on watercolor miniatures. The workshop is open to anyone ages 5 and up; the fee is \$1.00. For more information see July 6 above.

EASTERN MUSIC CAMP CONCERT: KEYBOARD SYNTHESIZER

— July 29, 10:30am, Main Galleries

*(The Music Camp concerts are sponsored by the EIU Music Department.)



The year 1988-89 has been active and enlightening. We have had enough time to properly plan, develop, and promote the exhibitions, events, and publications presented. Not too much time has been devoted to long-range planning, policy development, and program review. In order to minimize this situation, in the coming year you will see a shift in our major exhibitions will generally be of longer duration and greater length. We will be making of the Permanent Collection in the exhibition program. With fewer exhibitions presented, activities coordinated with the exhibitions, such as gallery surveys and gallery talks will also be fewer in number. But we will increase the number of activities offered will allow us to put more time and resources into the exhibitions and events scheduled. In essence, we want to reduce the quality of programs.

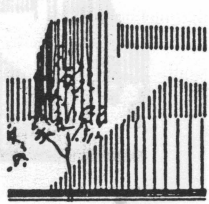
NEW AND RENEWED MEMEBERS: April 16 - June 15, 1989

Supporting Patron
Frank & Edith Hedges

Family Patron
Mrs. George Bennedict

Individual Patron
Mrs. Carl Ball
Lee Roll

Student/Senior Patron
Jennie Lynn Aubrey
Mary Williams

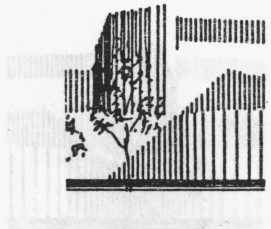


FROM THE DIRECTOR

The year 1988-89 has been active and enlivening. So active, in fact, that the Tarble staff has not always had enough time to properly plan, develop, and promote the exhibitions, events, and publications presented. Nor has there been enough time devoted to long-range planning, policy development, and program review. In an effort to minimize this situation, in the coming year you will see a shift in operations — major exhibitions will generally be of longer duration, and greater use will be made of the Permanent Collection in the exhibition program. With fewer exhibitions presented, activities coordinated with the exhibitions, such as Family Sampler Sundays and gallery talks, will also be fewer in number. But reducing the number of activities offered will allow us to put more time and resources into the exhibitions and events scheduled. In essence, we want to reduce the quantity while increasing the quality of programs.

Many new and exciting programs have been planned for the coming year. As a sample of one new program, I am pleased to report that the Illinois Arts Council is awarding the Tarble Arts Center a grant to fund a one-month visual arts residency through the IAC's Art-In-Education Residency Program, pending approval of appropriations for the State of Illinois by the General Assembly. Application for this grant was made by Curator of Education Donna Meeks, who will have more to report on the residency when she comes back from vacation and the budget has been finalized. An overview of the 1989-90 exhibitions and events will be presented in next month's newsletter. In the meantime, enjoy the Folk Arts exhibition, sample Casey's Art-In-The-Park, or try out for '23 Skiddoo.

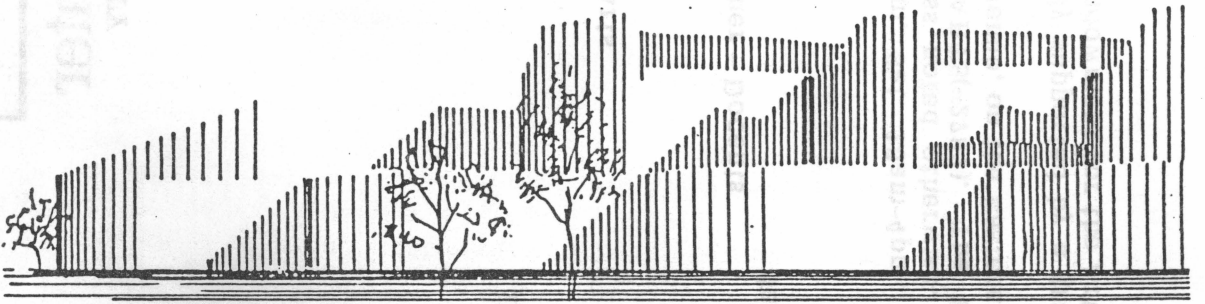
— Michael Watts



upcoming (21)

UPSTAR 24

Table Arts Center
EASTERN ILLINOIS UNIVERSITY
Chattanooga, Illinois 61820



Edith Malishon, Secretary
Lynn Meeks, Curator of Education
Lynn Watts - Sales/Pencil Gallery
For information, or to schedule
for 1-4pm closed Mondays and
Table Arts Center is located on
Illinois University campus.

Chattanooga, Illinois
Boxing Rd. 34
Field
U.S. Postage
First-Class Classification



Tarble Arts Center

EASTERN ILLINOIS UNIVERSITY
Charleston, Illinois 61920

Non-Profit Organization
U.S. Postage
Paid
Permit No. 24
Charleston, Illinois

STAFF:

Michael Watts, Director
David Pooley, Registrar

Donna Meeks, Curator of Education
Edith Malehorn, Secretary

Dr. Vaughn Jaenike, Dean of Fine Arts

VOLUNTEER COORDINATORS:

Maggie Hollowell and Corrinne Joyner - Docents
Ruth Jaenike - Gift Shop

Barbara Watts - Sales/Rental Gallery

GENERAL INFORMATION:

Open Hours: Tues.-Fri. 10am-5pm, Sat. 10am-4pm, Sun. 1-4pm; closed Mondays and holidays. Admission is free unless noted otherwise. For information or to schedule a group tour telephone 217/581-ARTS(-2787). The Tarble Arts Center is located on South Ninth Street at Cleveland Avenue, on the Eastern Illinois University campus.

The Tarble Arts Center is partially supported by a grant from the Illinois Arts Council, a state agency, and the National Endowment for the Arts.