

October 2009

Skeleton in the Trash Can

Stacey Knight-Davis

Eastern Illinois University, slknight@eiu.edu

Follow this and additional works at: http://thekeep.eiu.edu/lib_fac



Part of the [Library and Information Science Commons](#)

Recommended Citation

Knight-Davis, Stacey, "Skeleton in the Trash Can" (2009). *Faculty Research & Creative Activity*. 18.
http://thekeep.eiu.edu/lib_fac/18

This is brought to you for free and open access by the Booth Library at The Keep. It has been accepted for inclusion in Faculty Research & Creative Activity by an authorized administrator of The Keep. For more information, please contact tabruns@eiu.edu.

SKELETON IN THE TRASH CAN

Anatomical Models in an Academic Library

The Florence Coles Ballenger Teachers Center at Booth Library, Eastern Illinois University, provides a collection of teaching and learning materials and services for students and faculty of the College of Education and Professional Studies and to regional elementary and secondary public school teachers and administrators. The 4,750 square foot center, located just off the main foyer in the north end of Booth Library, includes Eastern's juvenile and preK-12 curriculum collections of more than 40,000 volumes.

A selection of science models appropriate for elementary teaching was purchased in 2004, including anatomy and physiology topics. In 2005, additional models appropriate for high school and college level study were added to the Ballenger Teachers Center collection.

Anatomical models added in 2005 were selected by Stacey Knight-Davis as part of a special collection development project. All other models and kits selected by Ann Brownson, Coordinator of the Ballenger Teachers Center.

All cataloging completed by Cataloging Services, Booth Library, Eastern Illinois University.

Anatomical Models and 3D Teaching Aids

Title: Book plus science models the ear [model].

Series: [The anatomy series](#)

Published: Aurora, Ont. : SI Manufacturing, 1997.

Physical Description: 1 model : col. foam ; 21 x 25 cm. + 1 activity card.

Summary: The model can be used as a puzzle, for games, and for other activities so students can understand the workings of the ear.

Call Number: [QM507 .B66 1997x](#)

Title: Book plus science models, the heart [model]

Series: [The anatomy series](#)

Published: Aurora, Ont. : SI Manufacturing, 1997.

Physical Description: 1 model : col. foam ; in package 37 x 26 cm. + 1 activity card.

Summary: The model can be used as a puzzle, for games, and for other activities so students can understand the workings of the heart.

Call Number: [QM181 .H43 1997x](#)

Title: Book plus science models, the brain [model]

Series: [The anatomy series](#)

Published: Aurora, Ont. : SI Manufacturing, 1997.

Physical Description: 1 model : col. foam ; in package 37 x 26 cm. + 1 activity card.

Summary: The model can be used as a puzzle, for games, and for other activities so students can understand the workings of the brain.

Call Number: [QM455 .B66 1997x](#)

Title: Boozle bear [realia] / Hydrocephalus Association.

Published: Sana Francisco, CA : Hydrocephalus Association, [2007?]

Physical Description: 1 plush teddy bear : light brown with black stitched eyes, nose, and mouth ; catheter accessible through velcro patch in head ; shunt 29 x 19 cm. + 1 instruction sheet + 1 pen barrel.

Call Number: [RJ496.H9 B66 2007x](#)

Title: Breakfast, lunch & dinner food set [toy].

Published: [Greenville, Wis.] : School Smart, [2000?]

Physical Description: 42 pieces : plastic, col. ; in plastic jar 31 x 19 cm.

Summary: "Non-toxic colors. Set of 3 includes: Breakfast Set: pancake, scrambled egg, bacon, three strawberries, two pats of butter and a slice of bread. Lunch Set: pizza, french fries, hamburger topped with lettuce and tomato, white bread, bologna, cheese, peach and pineapple wedges, chocolate cupcake and glass of milk. Dinner Set: steak, chicken thigh, mashed potatoes, peas, butter, lettuce, tomato, dinner roll and apple pie" -- www.schoolspecialtyonline.net.

Call Number: [TX355 .B74 2000x](#)

Title: Budget brain model with arteries [model].

Published: [Skokie, Ill.] : Anatomical Chart Co. : [Del Mar, Calif. : Distributed by The Brain Store], c1996.

Physical Description: 1 model containing 4 cerebrum parts, 2 brain stem halves, 2 cerebellum halves : rubber on plastic stand ; 12 x 15 x 15 cm. + 1 guide (1 folded sheet)

Summary: Brain model authentic in size, shape and feel, to be used for demonstrations, independent learning centers, and presentations. Includes 8 dissectible parts and 60 labeled structures. Guide includes labeled diagrams for sagittal section showing arteries; cerebrum; cerebellum; lobes of brain; base of brain; and brain stem.

Call Number: [QM455 .B83 1996x](#)

Title: Budget Bucky skeleton [model]

Published: Skokie, Ill. : Anatomical Chart Co., [1996]

Physical Description: 1 human skeleton with 8 removable parts : plastic, col. ; 5'6" + 1 guide (parts list, assembly instructions) + 1 stand.

Call Number: [QM101 .B83 1993x](#)

Title: Budget functional Francis torso [model]

Published: Skokie, Ill. : Anatomical Chart Co., 2004?

Physical Description: 1 unisex model containing 32 parts : plastic, col. ; 85 cm. + 1 booklet (assembly instructions, parts list).

Summary: "This male/female torso features 32 parts, including 3 removable vertebrae, 3 spinal cord segments, a female breast plate, head, eyeball, 4-part brain, 2 half lungs, 2-part heart, liver, one-half kidney, duodenum with pancreas and spleen, 2-part stomach, intestines, 4-part male genitalia, 2-part female genitalia with removable fetus, and a gender neutral bladder cover. Mounted on base. Size: 33-1/2" tall" - Anatomical Chart Co. website.

Call Number: [QM33 .B83 2004x](#)

Title: The chronic illness game [game] / Yvonne Searle and A.M. Stradmeijer.

Series: [Lifegames](#)

Published: Philadelphia, PA : London : Jessica Kingsley Publishers, c2006.

Physical Description: 1 game (board, 6 sets of cards, 2 dice, 6 counters, 1 instruction booklet) ; in box 37 x 27 x 4 cm.

Summary: "An engaging and sensitive board game for two to six players that helps children and adolescents with a chronic illness to develop coping strategies and social skills" -- cover.

Call Number: [RJ380 .S43 2006x](#)

Title: Classic skull [model] : 3 part.

Published: Tucke, LA : American 3-D, [200-]

Physical Description: 1 model (22 x 14 x 19 cm.) in three parts ; in container (24 x 17 x 17 cm.)

Call Number: [QM105 .C52 2000x](#)

Title: The digestive system [model].

Series: [Book plus science models. the anatomy series.](#)

Published: Aurora, Ont. : SI Manufacturing, 1997.

Physical Description: 1 model : col. foam ; in package 37 x 26 cm. + 1 activity card.

Summary: The model can be used as a puzzle, for games, and for other activities so students can understand the workings of the digestive system.

Call Number: [QM301 .D655 1997x](#)

Title: Discovery packs of learning [kit] : primary teeth.

Published: [Madison, Wis.] : Demco, c2000.

Publisher Number: 171-2204 Demco

Physical Description: 3 books, 1 tooth model ; in black net backpack, 41 x 29 x 11 cm.

Call Number: [QP88.6 .D57 2000x](#)

Title: Ear modell [sic] [model] = Modele de l'oreille.

Published: Germany : [s.n., 199-?]

Physical Description: 1 model (4 pieces) : col., plastic ; 20 x 34 x 16 cm. + 1 key sheet.

Call Number: [QM507 .E247 1990x](#)

Title: The Eye [model]

Series: [Book plus science models. the anatomy series.](#)

Published: Aurora, Ont. : SI Manufacturing, 1997.

Physical Description: 1 model : col. foam ; in package 37 x 26 cm. + 1 activity card.

Summary: The model can be used as a puzzle, for games, and for other activities so students can understand the workings of the eye.

Call Number: [QM511 .E94 1997x](#)

Title: Functional larynx [model]

Published: Chicago, IL: Denoyer-Geppert Science Co. , 1994.

Physical Description: 1 model (3 pieces) : plastic, col. ; 38 x 18 x 15 cm. + 1 key.

Summary: Four times life-size model with arytenoid cartilages, hyoid bone, epiglottis and moveable vocal chords. The right side depicts the cartilaginous structure and the left side also shows musculature. Instructor's key identifies 56 labeled parts.

Call Number: [QM255 .F8 1994x](#)

Title: Functional model of the knee-joint [model].

Published: [Germany] : SOMSO ; Ramsey, N.J. : [Distributor] Biomedical Models Company, [199-?]

Physical Description: 1 model : plastic, col. ; 32 x 10 x 12 cm. + 1 pamphlet.

Summary: Natural size; showing the ligaments and cartilages; flexion, extension, inner and outer rotation movements are possible; stands on a detachable base.

Call Number: [QM131 .F86 1990x](#)

Title: Getting to know your heart [kit] : lower elementary / the American Heart Association Schoolsite Program.

Published: Dallas, Tex. : American Heart Association, c1988.

Physical Description: 1 videocassette, 2 sound cassettes, 2 stethoscopes, 2 packages activity cards, 1 alcohol prep package, 1 set rubber tubing, 1 package car signs, 3 module folders, 1 teacher's guide, 1 background guide ; in box 33 x 27 x 7 cm.

Call Number: [QP111.6 .G48 1988x](#)

Title: Heart model [model].

Published: [Ticker, GA : American 3-B, 1996?]

Physical Description: 1 model : col. ; 11 x 9 x 7 cm. on stand + 1 guidekey ([2] p. ; 21 cm.) in container (19 x 14 x 15 cm.)

Summary: A three quarters size, two part model with numbered guidekey to show the primary parts of the human heart.

Call Number: [QM181 .H42 1996x](#)

Title: Muskelarm [model] = Upper extremity with muscles = Membre superieur avec muscles.

Published: [Dresden, Germany?] : 3B Scientific, 2000.

Physical Description: 1 *arm* model (6 pieces + stand) : plastic ; 61 x 16 x 9 cm. with 18 x 18 cm. base.

Summary: Detailed model of a human adult right *arm* and shoulder girdle which shows muscles, tendons, nerves, and blood vessels. Structures are numbered and a key identifying the structures is included. Five muscles are removable to allow for viewing of structures beneath them.

Call Number: [QM548 .M87 2000x](#)

Title: Nasco Lifeform one pound fat replica [model].

Published: Ft. Atkinson, Wis. : Nasco, 2000?

Physical Description: 1 model : plastic, col. ; 11 x 10 x 9 cm.

Summary: "Each replica dramatically visualizes the important and motivating fact that "every extra pound of fat requires an additional mile of blood vessels" - publisher website.

Call Number: [QM565 .N37 2000x](#)

Title: Nose/sinus [model]

Series: [Book plus science models. the anatomy series.](#)

Published: Aurora, Ont. : SI Manufacturing, 1997.

Physical Description: 1 model : col. foam ; in package 37 x 26 cm. + 1 activity card.

Summary: The model can be used as a puzzle, for games, and for other activities so students can understand the workings of the nose and sinuses.

Call Number: [QM505 .N68 1997x](#)

Title: [One pound body muscle replica] [model].

Published: Skokie, Ill. : Anatomical Chart Co., 2000?

Physical Description: 1 model : plastic (red) ; 12 x 8 x 8 cm.

Call Number: [QM571 .O64 2000x](#)

Title: Pearly whites [game] : a dental health game.

Published: Vernon Hills, IL : Learning Resources, Inc., 2000?

Publisher Number: LER7340 Learning Resources

Physical Description: Game board, 4 pawns, spinner, 80 true/false question cards, 20 dental check up cards, 1 guide : col. ; in box 36 x 36 x 4 cm.

Summary: Level 1: travel through the mouth, tooth-by-tooth, by naming each tooth on which the spinner lands. The first player swallowed by the giant mouth wins. Level 2: travel around the mouth tooth-by-tooth, by answering dental health questions. The first player swallowed by the giant mouth wins.

Call Number: [RK63 .P425 2000x](#)

Title: SunWise : a school program that radiates good ideas.

Published: [Washington, D.C.] : EPA, [2001]

Physical Description: 1 case (82 sheets, 10 dividers, 12 pencils) : ill. ; 29 x 31 x 15 cm.

Call Number: [QH652.4 .S86 2001x](#)

Title: The talking, feeling, and doing game game ; a psychotherapeutic game for children.

Published: [s.l.] : Creative Therapeutics 1998.

Physical Description: 1 box containing 1 playing board, 1 set of talking cards, 1 set feeling cards, 1 set doing cards, 1 spinner card, reward chips, 2 die, 6 playing pieces, instructions.

Summary: Designed to help therapist use non-threatening methods to learn the underlying psychological processes of children in therapy.

Call Number: [RJ505.P6 G37 1998x](#)

Title: The tongue [model]

Series: [Book plus science models. the anatomy series.](#)

Published: Aurora, Ont. : SI Manufacturing, 1997.

Physical Description: 1 model : col. foam ; in package 37 x 26 cm. + 1 activity card.

Summary: The model can be used as a puzzle, for games, and for other activities so students can understand the workings of the tongue.

Call Number: [QM503 .T66 1997x](#)

Title: The tooth [model].

Series: [Book plus science models. the anatomy series.](#)

Published: Aurora, Ont. : SI Manufacturing, 1997.

Physical Description: 1 model : col. foam ; in package 37 x 26 cm. + 1 activity card.

Summary: The model can be used as a puzzle, for games, and for other activities so students can understand the anatomy of a tooth.

Call Number: [QP88.6 .T66 1997x](#)

Title: YourSELF [kit] : middle school nutrition education kit for teachers.

Published: Washington, D.C. : U.S. Dept. of Agriculture, Food and Nutrition Service, 1998.

Physical Description: 1 videocassette, 1 poster, 1 set reproducible masters, 1 teacher's guide, 30 identical magazines, 30 identical student activity guides ; in container 29 x 22 x 10 cm.

Call Number: [RJ206 .Y58x 1998](#)

Circulation

*Discovery packs of learning [kit]:
primary teeth.*

Added 2004, 12 circs

Breakfast, lunch & dinner food set [toy].

Added 2006, 10 circs

Bucky skeleton

Added 2005, 9 circs

Tooth

Added 2004, 8 circs

Getting to know your heart [kit]

Added 2005, 6 circs

Heart model

Added 2005, 6 circs

Classic skull [model]

Added 2005, 6 circs

The digestive system [model]

Added 2004, 5 circs

The Eye

Added 2004, 4 circs

Budget Brain

Added 2005, 4 circs

Book plus science models the ear

Added 2004, 4 circs

YourSELF

Added 2002, 4 circs

Muskelarm

Added 2005, 3 circs

Nose/sinus

Added 2004, 3 circs

Talking, feeling, and doing game

Added 2002, 3 circs

Functional Francis

Added 2005, 2 circs

One pound fat

Added 2005, 2 circs

Pearly whites

Added 2008, 2 circs

SunWise

Added 2002, 2 circs

Tongue

Added 2004, 2 circs

Procedural Information

- All models fully cataloged
- Loan periods 4 weeks for students 16 weeks for faculty
- Inventory sheet must be filled out for Budget Bucky and Functional Francis

Suppliers

- Professional quality models purchased from Anatomical Chart Company
- Elementary education kits purchased from Demco

Challenges

- Assembly and inventory guide developed in-house for Functional Francis and Budget Bucky
- No containers provided by supplier
 - Plastic storage boxes for some models
 - Plastic bags with hangers for some
 - Skeleton and torso containers must roll, and be padded. Rolling trash cans lined with upholstery foam used.
 - Arm model too big for box or bag. Fits nicely in shotgun case.

Containers for Budget Bucky and Functional Francis.



Box Kit area of Ballenger Teachers Center



Bag Kit area



Bag Kit, Boozle Bear, Fat model, and Skull Model



Arm model in case





WorldCat results for: kw: brain and kw: model and kw: arteries and li: IAD. Record 3 of 3.

Detailed
Record[Add/View
Comments](#)

Budget brain model with arteries

Anatomical Chart Co.; Brain Store, Inc.

1996

English Visual Material : Model 1 model containing 4 cerebrum parts, 2 brain stem halves, 2 cerebellum halves : rubber on plastic stand ; 12 x 15 x 15 cm. + 1 guide (1 folded sheet)
[Skokie, Ill.] : Anatomical Chart Co. : [Del Mar, Calif. : Distributed by The Brain Store],

Brain model authentic in size, shape and feel, to be used for demonstrations, independent learning centers, and presentations. Includes 8 dissectible parts and 60 labeled structures. Guide includes labeled diagrams for sagittal section showing arteries; cerebrum; cerebellum; lobes of brain; base of brain; and brain stem.

GET THIS ITEM

Availability: FirstSearch indicates your institution owns the item.

- [Libraries worldwide that own item:](#) 15 EASTERN ILLINOIS UNIV
- [Connect to the EIU Online Catalog](#)
- [Borrow this item from another library](#) (Interlibrary Loan)

External Resources: • [Cite This Item](#)

Title: Budget brain model with arteries

Corp Author(s): [Anatomical Chart Co.](#) ; [Brain Store, Inc.](#)

Publication: [Skokie, Ill.] : Anatomical Chart Co. : [Del Mar, Calif. : Distributed by The Brain Store],

Year: 1996

Description: 1 model containing 4 cerebrum parts, 2 brain stem halves, 2 cerebellum halves : rubber on plastic stand ; 12 x 15 x 15 cm. + 1 guide (1 folded sheet)

Language: English

Abstract: Brain model authentic in size, shape and feel, to be used for demonstrations, independent learning centers, and presentations. Includes 8 dissectible parts and 60 labeled structures. Guide includes labeled diagrams for sagittal section showing arteries; cerebrum; cerebellum; lobes of brain; base of brain; and brain stem.

SUBJECT(S)

Descriptor: [Brain -- Anatomy.](#)
[Brain -- Models.](#)

Note(s): Title from guide./ At head of title: C-20C./ Title in publisher's Web list: Budget brain with arteries model./ Color-keyed with red for arteries; blue for veins; yellow for nerves; pink for cortex (grey matter) and white for medulla fiber (white matter).

Class Descriptors: LC: [QM455](#)

Other Titles: Brain model with arteries; C-20C Budget brain model with arteries; Budget brain with arteries model; Brain with arteries model

Material Type: Model (mdl)

Document Type: Visual Material

Entry: 20000516

Update: 20080415

Accession No: OCLC: 44063064



WorldCat results for: kw: boozle and kw: bear. Record 2 of 2.

Detailed
Record[Add/View
Comments](#)

Boozle bear

Hydrocephalus Association.

2007

English Visual Material : Real object 1 plush teddy bear : light brown with black stitched eyes, nose, and mouth ; catheter accessible through velcro patch in head ; shunt ; 29 x 19 cm. + 1 instruction sheet + 1 pen barrel.

Sana Francisco, CA : Hydrocephalus Association,

"Boozle bear, a teddy bear with a shunt, was developed by Dory Kranz and Sarah Zadorozynj of the Hydrocephalus Association. Boozle serves as a teaching tool for doctors, nurses, parents and children. Anyone can easily perform "surgery" on Boozle with an actual shunt inserted from the head to the abdomen"--The Hydrocephalus Association web site (http://www.hydroassoc.org/education_support/publications).

GET THIS ITEM

Availability: FirstSearch indicates your institution owns the item.

- [Libraries worldwide that own item:](#) 1 EASTERN ILLINOIS UNIV
- [Connect to the EIU Online Catalog](#)
- [Borrow this item from another library](#) (Interlibrary Loan)

External Resources: • [Cite This Item](#)

FIND RELATED

Find Items About: [Hydrocephalus Association.](#) (1)

Title: Boozle bear

Corp Author(s): [Hydrocephalus Association.](#)

Publication: Sana Francisco, CA : Hydrocephalus Association,

Year: 2007

Description: 1 plush teddy bear : light brown with black stitched eyes, nose, and mouth ; catheter accessible through velcro patch in head ; shunt ; 29 x 19 cm. + 1 instruction sheet + 1 pen barrel.

Language: English

Abstract: "Boozle bear, a teddy bear with a shunt, was developed by Dory Kranz and Sarah Zadorozynj of the Hydrocephalus Association. Boozle serves as a teaching tool for doctors, nurses, parents and children. Anyone can easily perform "surgery" on Boozle with an actual shunt inserted from the head to the abdomen"--The Hydrocephalus Association web site (http://www.hydroassoc.org/education_support/publications).

SUBJECT(S)

Descriptor: [Hydrocephalus in children.](#)
[Brain-damaged children -- Education.](#)

Note(s): **Audience:** 4 and over.

Class Descriptors: **LC:** [RJ496.H9](#)

Responsibility: Hydrocephalus Association.

Material Type: Primary school (pri); Real object (rbj)

Document Type: Visual Material

Entry: 20080221

Bucky

Adult Human Plastic Skeleton





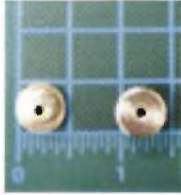




Parts list
Unpacking Instructions
Assembly and Disassembly
Packing Instructions

About Bucky

Bucky is intended for teaching basic anatomy, and his bones do not replicate the color or intricate textural nuances of real bone. He is fully articulated, and his joints generally allow the same range of motion as an adult human. Bucky also features nerve branches, the vertebral artery, and a herniated disc.

Parts List

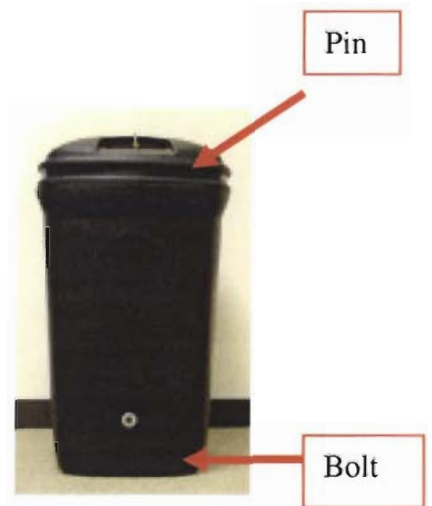
 <p>1. Torso and Skull</p>	 <p>2. Right and Left Arms</p>	 <p>3. Right and Left Legs</p>
 <p>4. 3 Removable Teeth</p>	 <p>5. 2 small chrome-plated knurled nuts (used to attach arms)</p>	 <p>6. 2 large chrome-plated knurled nuts (used to attach legs)</p>
 <p>7. Stand base and Chrome rod</p>		

Packing Materials

1. Black plastic case
2. Small plastic box with red lid (for teeth)
3. 1 Foam sheet
4. 2 pieces of string (one tied to skull, one to tie foam)
5. 3 pieces bubble wrap
6. Bolt and large washer
7. Large metal pin with retaining clip

Unpacking Instructions

1. Unlatch the wire retaining clip and remove the pin from the lid of the case.
Do not attempt to remove lid before removing pin.
2. Remove lid and replace pin through holes in lid.
3. Have an assistant steady the case or set the case against a table or wall for support. Case may tip over if not supported.
4. Remove bubble-wrapped arms and legs from case.
5. Remove the chrome rod from case.
6. Remove the torso from case.
7. Unscrew the bolt on the front of the case to release the stand base.



Assembly Instructions

Stand Assembly

1. Remove stand base and thread the chrome rod into the base. Make sure rod is tight against stand base.
2. Lower torso onto stand so that the chrome receiver at the base of the pelvis slips over the rod.



Leg attachment

1. Remove large knurled nut from the bolt at the end of the left femur.
2. Insert femur bolt through small hole in pelvis.
3. Thread large knurled nut back on to femur bolt to attach leg to torso.
4. Repeat steps 1-3 for right leg.



Arm Attachment

1. Remove small knurled nut from bolt at right shoulder.
2. Insert shoulder bolt through hole in right humerus.
3. Slip the end of the bolt through the hole in the metal bracket.
4. Thread small knurled nut on to bolt.
5. Repeat steps 1-4 for left arm.



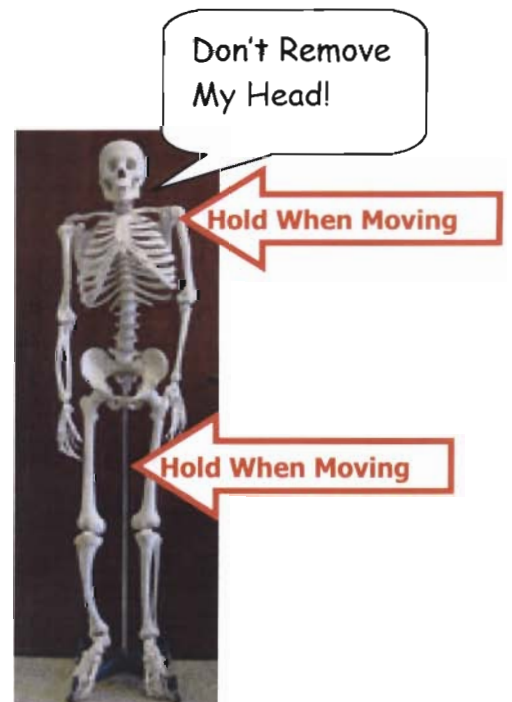
Teeth

1. Remove the three teeth from the plastic box and insert them into the empty sockets in the lower jaw.



Important:

- Please do not remove the skull from the torso. It is extremely difficult to realign and reattach the skull to the torso if removed.
- Bucky can tip over easily! If moving Bucky while on the stand, hold onto both the stand and the shoulder.



Disassembly and Packing Instructions

Teeth

1. Remove teeth and return them to the small plastic box with red lid. Make sure all 3 teeth are in the box.

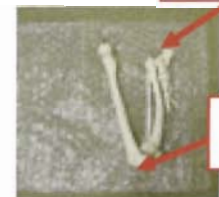
Arms

1. Remove small nut from bolt in both shoulders.
2. Remove arms.
3. Thread small nut onto shoulder bolt. Make sure nuts are on both the shoulder bolts.
4. Wrap both arms together in 1 sheet of bubble wrap.



Legs

1. Remove large nut from bolt in leg.
2. Remove leg.
3. Thread large nut back on to leg bolt.
4. Wrap legs separately in bubble wrap, with knee and ankle bent as shown.

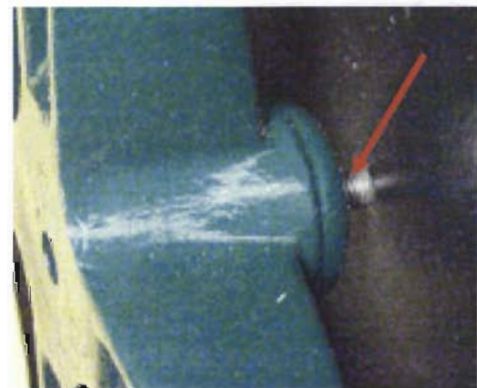


Ankle

Knee

Stand

1. Remove the torso from the stand.
2. Unthread the chrome rod from the stand base.
3. Place the stand base in the case so that the threaded hole in the base lines up with the bolt in the front of the case.
4. Thread bolt into stand to hold it securely to the case.
5. Place the chrome rod in the case between the stand base and side of case, as shown.

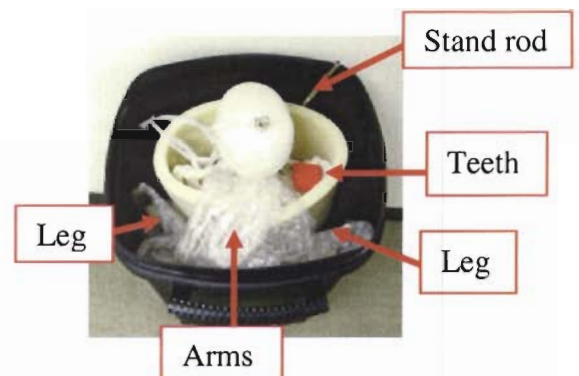


Packing

1. Place foam sheet in case, covering stand base and rod, as shown.
2. Place torso in case facing the stand, as shown. Make sure the skull is in the center of the case. Bucky only fits correctly in the case if his face is against the stand and he is centered in the case.
3. Wrap the foam around the torso and tie with string.
4. Carefully place the bubble-wrapped legs into the case. Place one leg on each side of Bucky's back.
5. Gently fit the bubble-wrapped arms into the case between the two legs. Load the arms so that the fingers are at the top of the case. The fingers are less prone to be crushed if at the top.
6. Load the box of teeth in the case.
7. Thread the string attached to Bucky's skull through the hole in the top of the case lid.
8. Using the string, align the eyelet in the top of the skull with the two holes in the top of the lid.
9. Insert the pin so that it goes through the holes in the lid and the eyelet is held in the middle.
10. Latch the retaining clip on the pin.
11. Attach this manual to the binder clip on the side of the case.



String



Bucky Skeleton Loan Agreement:

I understand that **I am liable** for any deliberate misuse or damage to this model. I am also responsible for the replacement cost of the model if it is lost or stolen.

I understand that the model and all its parts **must be returned to the Ballenger Teachers' Center desk before 4:00pm on the day the model is due.** The model cannot be returned on Saturday or Sunday.

Inventory list	BTC staff member initials
Torso with skull attached	
Left leg	
Right Leg	
Nuts for legs (2, chrome)	
Left Arm	
Right arm	
Nuts for arms (2, chrome)	
3 teeth and box for teeth	
foam sheets	
Stand base	
Stand rod	
Bolt that attached stand base to case	
Case lid	
User manual	
Notes:	

Borrower's Name (print)

Signature of borrower

Library ID number

Borrower Local Address

Phone number

e-mail

Borrowed date

Date Due

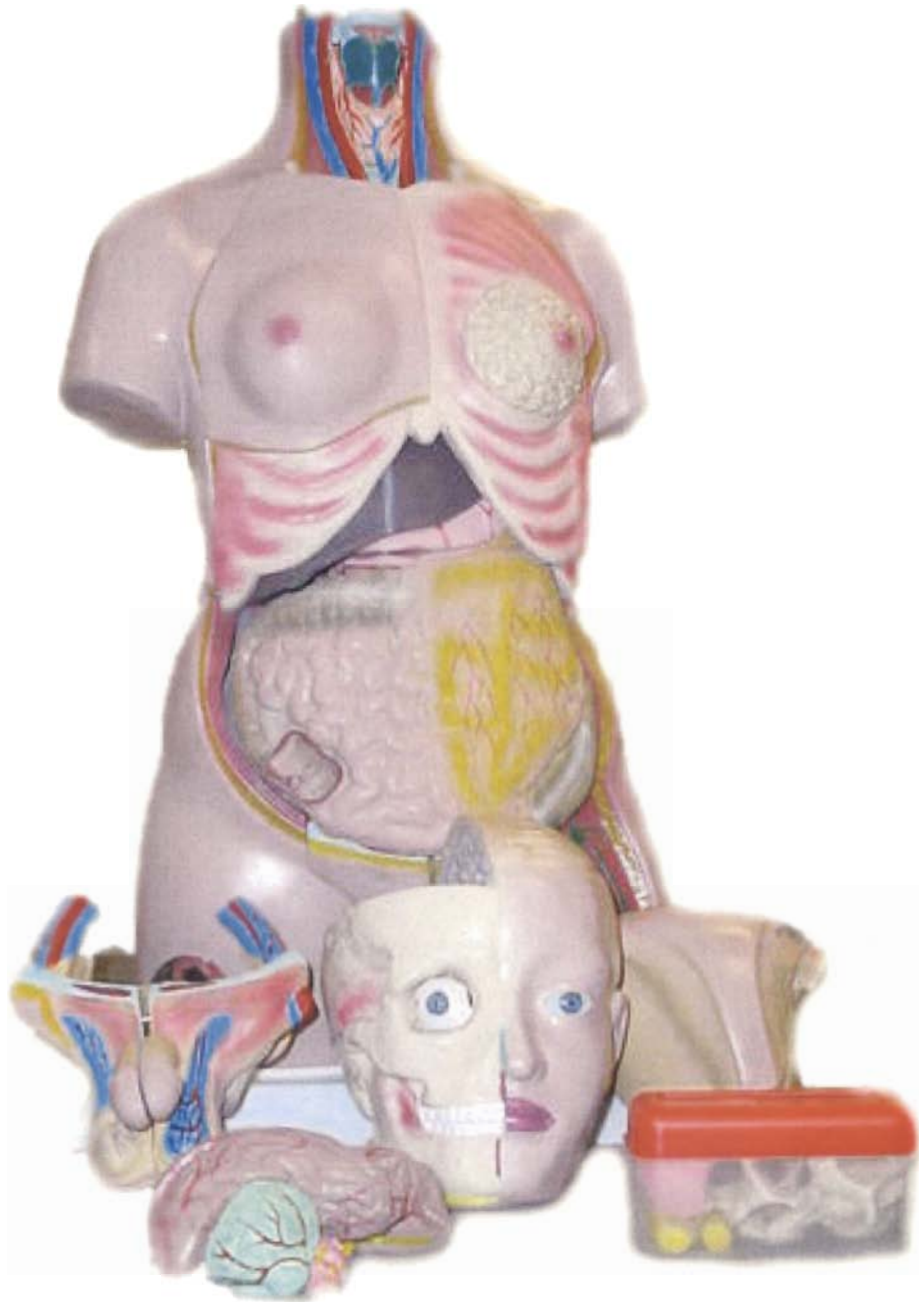
Staff member signature

Date returned

Staff member signature

Functional Francis

Male/Female Torso



Parts List
Assembly and Disassembly Instructions
Packing Instructions

Parts List (32 parts total)

Model Parts

- 1. Torso (1 piece)**
- 2. Head (1 piece)**
- 3. Eyeball (1 piece)**
- 4. Brain (4 parts)**
- 5. Vertebrae (3 pieces)**
- 6. Spinal Cord Segments (3 pieces)**
- 7. Female Breast Plate (1 piece)**
- 8. Half Lungs (2 pieces)**
- 9. Heart (2 parts)**
- 10. Liver (1 piece)**
- 11. Half Kidney (1 piece)**
- 12. Duodenum with Pancreas and Spleen (1 piece)**
- 13. Stomach (2 parts)**
- 14. Intestines (1 piece)**
- 15. Male Genitalia (4 parts)**
- 16. Female Genitalia (2 parts)**
- 17. Fetus (1 piece)**
- 18. Gender Neutral Bladder Cover (1 piece)**

Packing Materials

- 1. Case and Lid**
- 2. Foam Sheet**
- 3. Small Plastic Box and Lid**
- 4. Four Padded Bags**

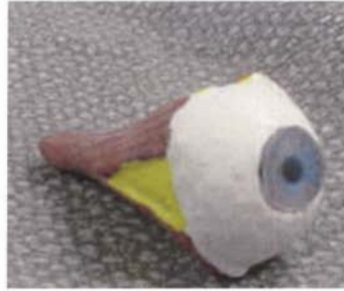
Parts Identification Guide



1. Torso



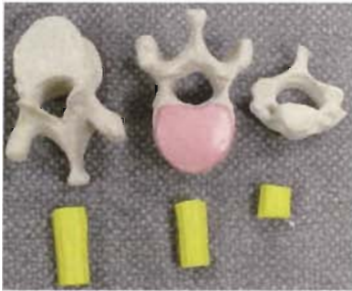
2. Head



3. Eyeball



4. Brain



5. Vertebrae 6. Sp. Cord



7. Breast Plate



8. Lungs



9. Heart



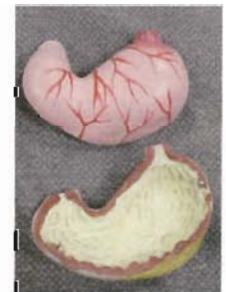
10. Liver



11. Kidney



12. Duodenum



13. Stomach



14. Intestines



15. Male Genitalia



16. Female Genitalia



17. Fetus



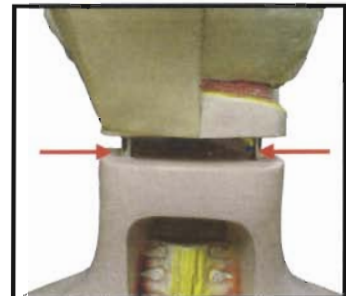
18. Gender Neutral Bladder Cover

Unpacking

1. Remove the four padded bags and small plastic box from the case.
2. Grasp Torso under the shoulders and gently lift it from the case.

Initial Assembly

1. Remove Head from padded bag.
2. Attach the Head to the Torso by aligning the two pins in the Torso neck with the two holes in the Head neck and gently pressing down, as shown.
3. Remove the Brain from padded bag and place in Head.



Optional Spine Assembly

1. Insert the longer Spinal Cord Segments into the two full Vertebrae.
2. Insert the Vertebrae and Cord Segments into the cavities in the back of the Torso. Vertebrae will fit loosely.
3. Carefully balance the half vertebrae and smallest spinal cord segment on one of the full vertebrae.
4. Be sure to remove Vertebrae and Cord Segments before moving the Torso. They will fall out if not removed.



Re-packing Vertebrae

1. Place the two full Vertebrae in the box so that they interlock, as shown.
2. Drop Spinal Cord segments in around Vertebrae.
3. Fit half Vertebrae on top of full Vertebrae.



Disassembly

1. Unlatch Breast Plate hooks from both sides of Torso.



2. Gently flex the Breast Plate to free it from the pins in the Torso.



3. Lungs are held by pins.



4. Heart, Liver and Stomach rest on Intestines. Remove them before removing Intestines.

5. Remove Intestines.

6. The combined Duodenum with Pancreas and Spleen is held by a pin.



7. The Kidney is held by a pin.



8. To remove Genitalia/Bladder Cover, pull up and away from the Torso.

Reassembly

1. Align pin in Kidney with hole in Torso.
2. Align pin in Duodenum unit with hole in Torso.
3. Insert Female Genitalia.
4. Insert Intestines.
5. Insert Stomach.
6. Insert Liver.
7. Insert Heart.
8. Align pin in Lung with pin in Torso.



9. Align holes in Breast Plate with pins in Torso by gently flexing Breast Plate.



10. Attach Breast Plate to Torso.



Packing

1. Remove Brain and place in padded bag.
2. Remove Head and place in padded bag. Be sure the Eyeball is in place.
3. Place Male Genitalia and Bladder Cover in padded bags.
4. Pack Vertebrae and Spinal Cord Segments as detailed on page 3.
5. Lift Torso under the shoulders and lower it into the case.
6. Pack Vertebrae box and padded bags around Torso.
7. Put this manual in the binder clip attached to the side of the case.

Functional Francis Loan Agreement:

I understand that **I am liable** for any deliberate misuse or damage to this model. I am also responsible for the replacement cost (\$398.95) of the model if it is lost or stolen.

I understand that the model and all its parts **must be returned to the Ballenger Teachers' Center desk before 4:00pm on the day the model is due.** The model cannot be returned on Saturday or Sunday.

Inventory list	BTC staff member initials
Torso (1 piece)	
Head (1 piece)	
Eyeball (1 piece)	
Brain (4 parts)	
Vertebrae (3 pieces)	
Spinal Cord Segments (3 pieces)	
Female Breast Plate (1 piece)	
Half Lungs (2 pieces)	
Heart (2 parts)	
Liver (1 piece)	
Half Kidney (1 piece)	
Duodenum with Pancreas and Spleen (1 piece)	
Stomach (2 parts)	
Intestines (1 piece)	
Male Genitalia (4 parts)	
Female Genitalia (2 parts)	
Fetus (1 piece)	
Gender Neutral Bladder Cover (1 piece)	

Borrower's Name (print)

Signature of borrower

Library ID number

Borrower Local Address

Phone number

e-mail

Borrowed date

Date Due

Staff member signature

Date returned

Staff member signature