


Received: 20 December 2016 | Revised: 18 April 2017 | Accepted: 1 May 2017

DOI: 10.1002/humu.23247

**METHODS**

# Haplotype reference consortium panel: Practical implications of imputations with large reference panels

Adriana I. Iglesias<sup>1,2,\*</sup>  | Sven J. van der Lee<sup>1\*</sup> | Pieter W.M. Bonnemaier<sup>1,2</sup> | René Höhn<sup>3,4</sup> | Abhishek Nag<sup>5</sup> | Puya Gharahkhani<sup>6</sup> | Anthony P. Khawaja<sup>7,8</sup> | Linda Broer<sup>9</sup> | International Glaucoma Genetics Consortium (IGGC)<sup>†</sup> | Paul J. Foster<sup>8</sup> | Christopher J. Hammond<sup>5</sup> | Pirro G. Hysi<sup>5</sup> | Elisabeth M. van Leeuwen<sup>2</sup> | Stuart MacGregor<sup>6</sup> | David A. Mackey<sup>10,11</sup> | Johanna Mazur<sup>12</sup> | Stefan Nickels<sup>4</sup> | André G. Uitterlinden<sup>1,9,13</sup> | Caroline C.W. Klaver<sup>1,2,14</sup> | Najaf Amin<sup>1</sup> | Cornelia M. van Duijn<sup>1,15</sup>

<sup>1</sup>Department of Epidemiology, Erasmus Medical Center, Rotterdam, the Netherlands<sup>2</sup>Department of Ophthalmology, Erasmus Medical Center, Rotterdam, the Netherlands<sup>3</sup>Department of Ophthalmology, Inselspital, University Hospital Bern, University of Bern, Bern, Switzerland<sup>4</sup>Department of Ophthalmology, University Medical Center Mainz, Mainz, Germany<sup>5</sup>Department of Twin Research and Genetic Epidemiology, King's College London, London, UK<sup>6</sup>Statistical Genetics, QIMR Berghofer Medical Research Institute, Royal Brisbane Hospital, Brisbane, Australia<sup>7</sup>Department of Public Health and Primary Care, University of Cambridge, Cambridge, UK<sup>8</sup>NIHR Biomedical Research Centre, Moorfields Eye Hospital NHS Foundation Trust and UCL Institute of Ophthalmology, London, UK<sup>9</sup>Department of Internal Medicine, Erasmus Medical Center, Rotterdam, the Netherlands<sup>10</sup>Centre for Ophthalmology and Visual Science, Lions Eye Institute, University of Western Australia, Perth, Australia<sup>11</sup>School of Medicine, Menzies Research Institute Tasmania, University of Tasmania, Hobart, Australia<sup>12</sup>Institute of Medical Biostatistics, Epidemiology and Informatics (IMBEI), University Medical Center Mainz, Germany<sup>13</sup>Netherlands Consortium for Healthy Ageing, Netherlands Genomics Initiative, the Hague, the Netherlands<sup>14</sup>Department of Ophthalmology, Radboud University Medical Center, Nijmegen, the Netherlands<sup>15</sup>Leiden Academic Centre for Drug Research (LACDR), Leiden University, the Netherlands**Correspondence**

Cornelia M. van Duijn, Department of Epidemiology, Erasmus Medical Center, PO Box 2040, 3000 CA Rotterdam, the Netherlands. Email: [c.vanduijn@erasmusmc.nl](mailto:c.vanduijn@erasmusmc.nl)

\*Adriana I. Iglesias and Sven J. van der Lee contributed equally to this work.

†Membership of the IGGC is listed in the supporting information.

Communicated by Christopher G. Mathew

**Abstract**

Recently, the Haplotype Reference Consortium (HRC) released a large imputation panel that allows more accurate imputation of genetic variants. In this study, we compared a set of directly assayed common and rare variants from an exome array to imputed genotypes, that is, 1000 genomes project (1000GP) and HRC. We showed that imputation using the HRC panel improved the concordance between assayed and imputed genotypes at common, and especially, low-frequency variants. Furthermore, we performed a genome-wide association meta-analysis of vertical cup-disc ratio, a highly heritable endophenotype of glaucoma, in four cohorts using 1000GP

Contract grant sponsors: Erasmus Medical Center and Erasmus University, Rotterdam, Netherlands; Organization for the Health Research and Development (ZonMw); the Research Institute for Diseases in the Elderly (RIDE); the Ministry of Education, Culture and Science; the Ministry for Health, Welfare and Sports; the European Commission (DG XII); the Municipality of Rotterdam; the Netherlands Organization of Scientific Research NWO Investments (175.010.2005.011, 911-03-012); the Genetic Laboratory of the Department of Internal Medicine, Erasmus MC; the Research Institute for Diseases in the Elderly (014-93-015; RIDE2); the Netherlands Genomics Initiative (NGI)/Netherlands Organization for Scientific Research (NWO) Netherlands Consortium for Healthy Aging (NCHA) (050-060-810); the Genetic Laboratory of the Department of Internal Medicine; the Department of Forensic Molecular Biology; the Department of Dermatology, Erasmus MC, Rotterdam, the Netherlands; European Commission FP6 STRP (018947) (LSHG-CT-2006-01947); the European Community's Seventh Framework Programme (FP7/2007-2013); the European Commission under the program 'Quality of Life and Management of the Living Resources' of the 5th Framework Programme (HEALTH-F4-2007-201413) (number QLG2-CT-2002-01254); Stichting Lijf en Leven; Stichting Oogfonds Nederland; Landelijke Stichting voor Blinden en Slechtzienden; Algemene Nederlandse Vereniging ter Voorkoming van Blindheid; Medical Workshop; Heidelberg Engineering; Topcon Europe BV; Australian Research Council Future Fellowship; National Institute of Health (NIH), National Eye Institute (NEI), (1 R01 EY024233-03).

This is an open access article under the terms of the Creative Commons Attribution License, which permits use, distribution and reproduction in any medium, provided the original work is properly cited.

© 2017 The Authors. *Human Mutation* Published by Wiley Periodicals, Inc.

and HRC imputations. We compared the results of the meta-analysis using 1000GP to the meta-analysis results using HRC. Overall, we found that using HRC imputation significantly improved  $P$  values ( $P = 3.07 \times 10^{-61}$ ), particularly for suggestive variants. Both meta-analyses were performed in the same sample size, yet we found eight genome-wide significant loci in the HRC-based meta-analysis versus seven genome-wide significant loci in the 1000GP-based meta-analysis. This study provides supporting evidence of the new avenues for gene discovery and fine mapping that the HRC imputation panel offers.

#### KEYWORDS

association studies, imputation, 1000 Genomes Project reference panel, Haplotype Reference Consortium, vertical cup-disc ratio

## 1 | INTRODUCTION

Progress in understanding the genetic etiology of complex traits is largely determined by the success of genome-wide association studies (GWAS) (McCarthy et al., 2008; Price, Spencer, & Donnelly, 2015). Imputation, that is, statistical inference of genotypes not directly assayed by arrays (Li, Willer, Sanna, & Abecasis, 2009), is crucial to the success of GWAS. Imputation increases the number of variants tested per study and allows combination of multiple studies assayed in different arrays, boosting the power of GWAS (Hao, Chudin, McElwee, & Schadt, 2009; Huang et al., 2015; Marchini & Howie, 2010). Recently, the Haplotype Reference Consortium (HRC) released the first version of a panel encompassing 64,976 haplotypes (McCarthy et al., 2016). This resource combines other widely used panels such as the 1000 Genomes Project (1000GP) (Genomes Project et al., 2015), the Genome of the Netherlands (GoNL) (Boomsma et al., 2014; Genome of the Netherlands, 2014), the UK10K (Consortium et al., 2015), and also includes sequencing data from 17 cohorts (McCarthy et al., 2016).

Previous studies have shown that larger reference panels considerably increase imputation accuracy, particularly for low-frequency variants, and that this gain in imputation accuracy results in increased statistical power (Browning & Browning, 2009; Deelen et al., 2014; McCarthy et al., 2016). To quantify the advantage of the HRC reference panel in the imputation of common and rare variants, we first assessed the concordance rate between directly assayed genotypes from exome array data and *best-guess* genotypes from 1000GP and HRC imputations. Then, we evaluated any difference in statistical power by comparing the meta-analysis of GWAS of vertical cup-disc ratio (VCDR) using 1000GP imputation versus HRC imputation, in the same samples. VCDR is a well-recognized endophenotype of primary open-angle glaucoma (Charlesworth et al., 2010) and a highly heritable trait ( $h^2 = 0.66$ ) (Charlesworth et al., 2010) used for clinically assessing glaucoma patients. Here, we assessed the impact of the imputation panel on a meta-analysis of GWAS of VCDR by analyzing four cohorts: the Rotterdam Study (RS-I, RS-II, RS-III) (Hofman et al., 2015) and the Erasmus Rucphen Family (ERF) (Aulchenko et al., 2004; Pardo, MacKay, Oostra, van Duijn, & Aulchenko, 2005) study.

## 2 | MATERIALS AND METHODS

### 2.1 | Study descriptions

The description of the participating studies can be found in the Supporting Information. All studies adhered to the tenets of the Declaration of Helsinki and were approved by their local Medical Ethics Committees. Written, informed consent was obtained from all participants.

### 2.2 | Genotype and imputations

The Rotterdam Study cohorts (RS-I, RS-II, and RS-III) and the ERF study were genotyped using commercially available genotyping arrays, and genotyping quality control (QC) was done for each cohort individually. Detailed information about genotyping and imputations for each study is presented in Supp. Table S1. The genome-wide arrays were used to impute variants twice, once with the 1000GP (Genomes Project et al., 2015) and once with HRC (McCarthy et al., 2016). Imputations with the 1000GP were described previously (van Leeuwen et al., 2015). For HRC, file preparation was done using scripts provided online (HRC Imputation preparation and checking: <http://www.well.ox.ac.uk/~wrayner/tools/>; v4.2.1). Imputation with HRC was facilitated by the Michigan Imputation server (Das et al., 2016). Filtered genotypes were uploaded. The server uses SHAPEIT2 (v2.r790) to phase the data and Minimac 3 for imputation to the HRC reference panel (v1.0). We used the imputed dosages returned by the service (McCarthy et al., 2016).

### 2.3 | Genotyping on the exome array

In total 3,159 participants from RS-I were genotyped in the HumanExome BeadChip v1.0 from Illumina (Illumina, Inc., San Diego, CA). To increase the quality of the rare variant genotype calls on the exome array, the genotypes were jointly called with 62,266 samples from 11 studies at the University of Texas HSC at Houston (UT Houston) (Grove et al., 2013). QC procedures for the genotype data were done both centrally at UT Houston and locally. The central QC procedures have been described previously (Grove et al., 2013). Locally, additional QC included removal of: (1) individuals with low genotype completion rate

(<90%), (2) variants with low genotype call rate (<95%), (3) individuals with sex-mismatches, (4) one individual from duplicate pairs, and (5) variants not called in over 5% of the individuals and those that deviated significantly from the expected Hardy-Weinberg Equilibrium proportions ( $P < 1 \times 10^{-06}$ ).

## 2.4 | Variant selection and calculation of concordance

A total of 236,756 variants on the exome array passed QC. Of these, we selected variants that fulfilled the following four criteria: (1) were imputed in both the 1000GP and HRC, (2) were polymorphic, (3) had non-ambiguous allele coding, and (4) showed no differences in reference allele frequency. In summary, 82,281 variants on the exome array were imputed in both 1000GP and HRC panels. Of these, 31,022 did not fulfill our criteria ( $n = 29,819$  monomorphic,  $n = 1,141$  with ambiguous allele coding, and  $n = 62$  with large differences [ $>10\%$ ] in reference allele frequency). The final set consisted of 51,259 variants, for which we calculated either the concordance of the alternate allele calls (for the low-frequency and rare variants) or the concordance for both reference and alternate allele (for common variants). Calculation of concordance was performed using the exome array genotypes as benchmark and the *best-guess* genotypes from either 1000GP or HRC.

For the common variants, the reported concordance is the percentage of correctly imputed alleles divided by the number of exome array alleles according to the following formula ( $n$  = number of individuals):

$$\text{Concordance for common variants} = x = 100 \times \frac{(b + d + f + h + 2(a + e + i))}{2n}$$

For the rare variants, the reported concordance is the percentage of correctly imputed alternate alleles divided by the number of exome array alternate alleles according to the following formula:

$$\text{Concordance for rare variants} = x = 100 \times \frac{(e + f + h + 2i)}{(b + e + h + 2(c + f + i))}$$

	Exome array (benchmark) # of alternate alleles			
	0	1	2	
HRC/1000GP # of alternate alleles	0	a	b	c
	1	d	e	f
	2	g	h	i

For comparison purposes, assessed variants were divided into nine categories based on their minor allele frequency (MAF) (i.e., common,  $MAF > 0.05$ ; low-frequency,  $0.01 < MAF < 0.05$ ; rare,  $0.001 < MAF < 0.01$ ), and  $R^2_{1000GP}$  (i.e.,  $R^2_{1000GP} > 0.8$ ;  $R^2_{1000GP} 0.3-0.8$ ;  $R^2_{1000GP} < 0.3$ ). Common variants with  $R^2_{1000GP} < 0.3$  that showed a concordance rate <90% ( $n = 44$ ) were examined in the list of vari-

ants located in inaccessible regions of the genome from the GoNL (Boomsma et al., 2014).

## 2.5 | Genome-wide association analyses in RS-I-II-III and ERF

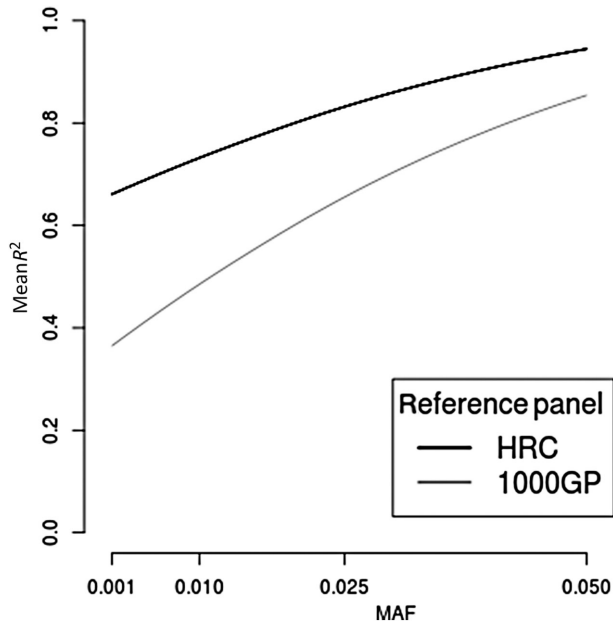
We performed a GWAS in four Dutch cohorts: RS-I, RS-II, RS-III, and ERF ( $n = 12,441$ ). GWAS were conducted twice per cohort, once using 1000GP imputations and once using HRC imputations. Association of directly genotyped and imputed dosages with VCDR was tested using linear regression under an additive model. All analyses were adjusted for age, sex, and the first five principal components in RS-I, RS-II, and RS-III, or family structure in ERF. The 1000GP imputations GWAS analyses were conducted using ProbABEL (Aulchenko, Struchalin, & van Duijn, 2010) software. To account for family relationships in ERF, the *mmscore* function implemented in GenABEL (Aulchenko, Ripke, Isaacs, & van Duijn, 2007) was used. Association analyses with HRC imputations were performed in RvTest-*meta score* option; to adjust for familial relationships in ERF, the kinship matrix estimated from the genotyped data was used. Variants with  $MAF < 0.01$  in 1000GP and  $MAF \leq 0.001$  in HRC, and with low imputation quality score ( $R^2 < 0.3$ ) were excluded from the analyses. The EasyQC software was used for QC at the study level, as described elsewhere (Winkler, et al., 2014). The inflation factor ( $\lambda$ ) of each individual study using 1000GP and HRC panels can be found in the Supp. Table S2.

## 2.6 | Meta-analysis of RS-I-II-III and ERF

Meta-analyses for both 1000GP and HRC association results were conducted using the inverse variance-weighted fixed-effect method in METAL (Willer, Li, & Abecasis, 2010). Genomic control was applied in METAL and heterogeneity was calculated. After meta-analyses, we excluded the variants that were not present in at least two of the four cohorts. Given that HRC does not include INDELS, we excluded the INDELS from the 1000GP meta-analysis. The remaining variants were used for comparison of the results between 1000GP and HRC. To calculate the  $\lambda$  in each meta-analysis we used those variants present in both meta-analysis ( $n = 7,654,440$ ).  $\lambda$  in 1000GP was 1.096, and in HRC 1.102, see QQ plot in Supp. Figure S1.

## 2.7 | Statistical analysis

To evaluate the change of  $P$  values in the HRC meta-analysis compared with the 1000GP meta-analysis, variants from 1000GP and HRC meta-analyses were divided into four categories: (1) genome-wide associated in 1000GP or HRC ( $P < 5.0 \times 10^{-08}$ ), (2) suggestively associated in 1000GP or HRC ( $5.0 \times 10^{-08} < P \leq 1.0 \times 10^{-04}$ ), (3) nominally associated ( $1.0 \times 10^{-04} < P \leq 0.05$ ), and (4) not associated ( $0.05 < P \leq 1$ ). We then subtracted the chi-square in HRC meta-analysis from the chi-square in 1000GP, and calculated the proportion of variants that showed a positive sign (i.e., larger chi-square in HRC). We then used a proportion Z test to evaluate if the proportion of variants with a positive sign was significantly different from 0.5.



**FIGURE 1** Imputation accuracy 1000GP versus HRC. Post-imputation quality metric based on the  $R^2$  value from 1000GP (in gray) and HRC (in black). MAF, minor allele frequency

### 3 | RESULTS

#### 3.1 | Comparison 1000GP versus HRC

We first compared the  $R^2$  value derived from the imputation software between 1000GP and HRC imputations (see Fig. 1). In this study,  $R^2_{1000GP}$  refers to the  $R^2$  value in 1000GP imputations and  $R^2_{HRC}$  to the value in HRC. As reported by the HRC consortium (McCarthy et al., 2016), we confirmed that the  $R^2_{HRC}$  was higher than the  $R^2_{1000GP}$ , particularly for rare ( $0.001 < \text{MAF} < 0.01$ ) and low-frequency variants ( $0.01 < \text{MAF} < 0.05$ ) variants.

In 3,159 individuals from the Rotterdam Study-I (RS-I) assayed on the HumanExome BeadChip v1.0 (exome array), we determined the concordance between directly assayed genotypes and imputed genotypes. Of the 51,259 studied variants (see *Materials and Methods* section), 21,230 were common ( $\text{MAF} > 0.05$  in the exome array), 8,006 were low-frequency variants ( $0.01 < \text{MAF} < 0.05$ ) and 11,090 were rare variants ( $0.001 < \text{MAF} < 0.01$ ). A total of 10,933 very rare variants (i.e.,  $\text{MAF} < 0.001$ ) were excluded as the minor allele count for the variants were six or less. The concordance rate of very rare variants can be found in Supp. Table S3 and Supp. Figure S2.

Figure 2 shows the concordance between exome array and 1000GP in red and the concordance between exome array and HRC in blue (plots are shown per MAF and  $R^2$  bins; for comparison purposes, we used the  $R^2_{1000GP}$  to define the bins). Supp. Table S4 shows the number of variants per bin and the concordance rates for both 1000GP and HRC.

Overall, concordance was better using HRC compared with 1000GP. For common variants with  $R^2_{1000GP}$  0.3–0.8 (Fig. 2B), the percentage of concordant variants (i.e., concordance rate  $\geq 90\%$ ) improved from 86% in 1000GP to 99.8% in HRC. In the case of common

variants with  $R^2_{1000GP} < 0.3$  ( $N$  variants = 177; Fig. 2C), the percentage of concordant variants improved from 46% in 1000GP to 75% in HRC.

For low-frequency variants, a remarkable improvement in concordance was observed as shown in Figure 2D–F. Overall ( $N$  variants = 8,006), the concordance increased from 44% in 1000GP to 66% in HRC. For variants with  $R^2_{1000GP} > 0.8$  ( $N$  variants = 3,844), the percentage of concordance improved from 85% in 1000GP to 98% in HRC. Improvement was most pronounced for variants with  $R^2_{1000GP}$  0.3–0.8 (Fig. 2E;  $N$  variants = 3,301), in which the percentage of concordant variants improved from 7% in 1000GP to 44% in HRC. Despite the overall improvement, the concordance is relatively low for variants with  $R^2_{1000GP} < 0.3$  (Fig. 2F;  $N$  variants = 861); concordance improved from 1% in 1000GP to 5% in HRC (see details in Supp. Table S4).

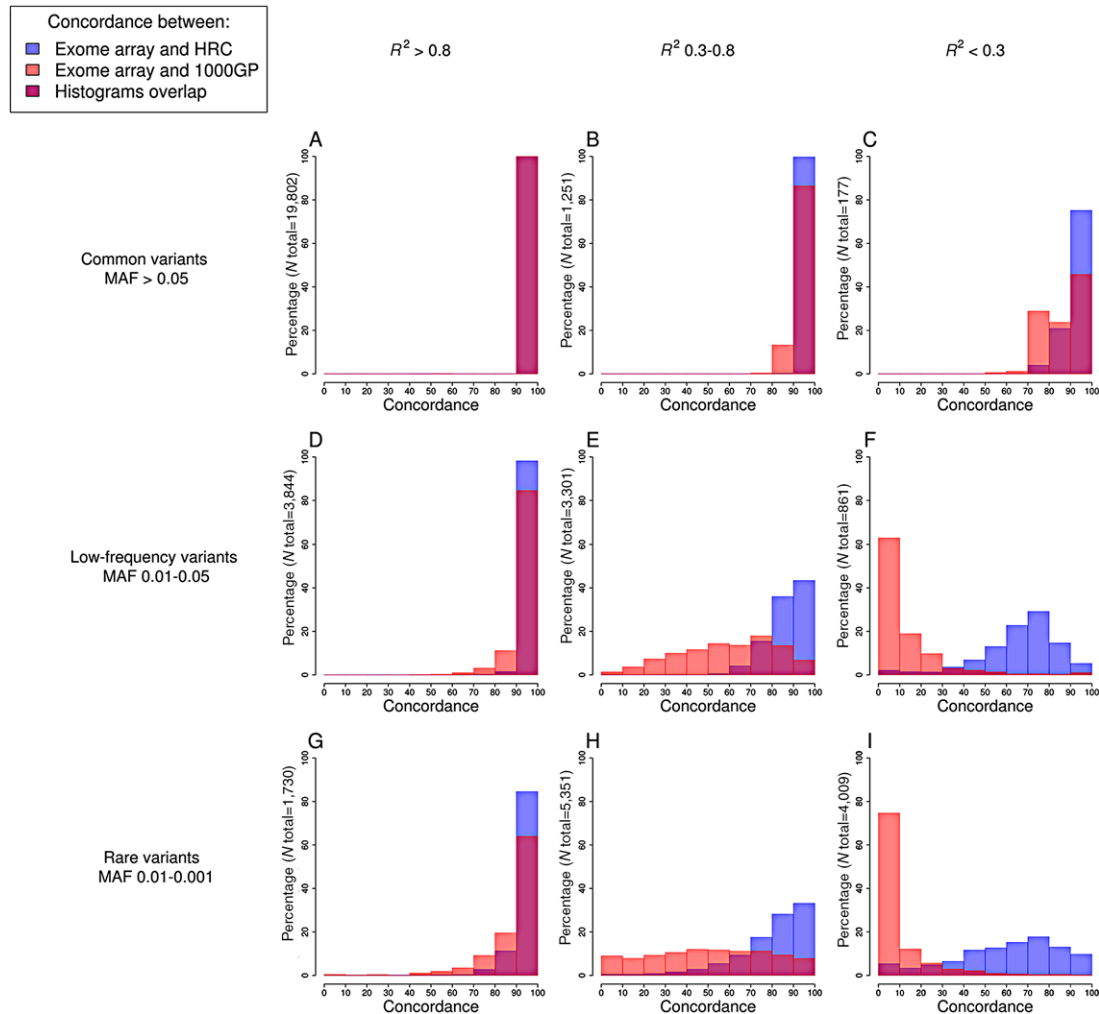
Using HRC, we found a similar pattern for rare variants as observed for low-frequency variants (Fig. 2G–I). Overall ( $N$  variants = 11,090) concordance improved from 14% in 1000GP to 34% using HRC imputations. For rare variants with  $R^2_{1000GP} > 0.8$  (Fig. 2G), concordance improved from 65% in 1000GP to 86% in HRC, whereas for rare variants with  $R^2_{1000GP}$  0.3–0.8, concordance increased from 8% in 1000GP to 35% in HRC (Fig. 2H).

#### 3.2 | Impact of HRC imputations on VCDR GWAS

To evaluate the improvement in statistical power, we compared the results of a meta-analysis of GWAS using 1000GP imputations to a meta-analysis of GWAS using HRC imputations. Both meta-analyses included 12,441 individuals from four independent Dutch cohorts (RS-I, RS-II, RS-III, and ERF). Table 1 describes the baseline characteristics of the study populations. The inflation factor lambda ( $\lambda$ ), an indicator of potential population stratification and false positive rate, was comparable in the two meta-analyses with values of 1.096 in the 1000GP meta-analysis and 1.102 in the HRC meta-analysis (Supp. Fig. S1 and Table S2), suggesting no increase in false positives in the HRC analyses.

To assess the improvement in  $P$  values, we calculated the proportion of variants for which a stronger association was found in the HRC meta-analysis. 62% of variants that showed suggestive association in 1000GP or HRC meta-analyses (i.e.,  $5.0 \times 10^{-08} < P < 1.0 \times 10^{-04}$ ;  $n$  variants = 4,683) showed smaller  $P$  values in the HRC meta-analysis ( $P = 3.07 \times 10^{-61}$ ; Table 2) suggesting improved sensitivity in the HRC-based meta-analysis. For variants below suggestive significance (i.e.,  $1.0 \times 10^{-04} < P < 1$ ), the  $P$  values did not improve, suggesting better specificity. No statistically significant differences were observed for the genome-wide significant variants.

Based on the data of the Rotterdam Study and ERF, we confirmed in our 1000GP meta-analysis seven loci reported by the International Glaucoma Genetics Consortium (IGGC) (Springelkamp et al., 2014, 2016), which is 2.6 times the size of this study. Using the HRC imputation, we confirmed one additional common variant (rs6539763,  $\text{MAF} = 0.46$ , close to *TMT2*), previously reported by the IGGC (Springelkamp et al., 2014). When comparing the top associated variants from both 1000GP and HRC meta-analyses, we found that in three



**FIGURE 2** Comparison of concordance between exome-array and imputed data (1000GP and HRC). Histograms are presented by bins selected based on minor allele frequency (MAF) and  $R^2_{1000GP}$  values. For each histogram, the concordance rate is on the x-axis and the percentage of variants ( $N$  total of variants) is on the y-axis. Concordance between exome-array genotypes and *best-guess* genotypes from 1000GP are shown in red and from HRC in blue. Overlapped regions of the histograms are in dark-red. Panels A–C show comparison of concordance for common variants; panels D–F show comparison of concordance for low-frequency variants, and panels G–I show comparison of concordance for rare variants. Based on the  $R^2_{1000GP}$  threshold, panels A, D, and G) show the comparison of concordance for variants with high  $R^2_{1000GP}$  ( $>0.8$ ), panels B, E, and H show the comparison of concordance for variants with  $R^2_{1000GP}$  between 0.3 and 0.8, and panels C, F, and I show the comparison of concordance for variants with low  $R^2_{1000GP}$  ( $<0.3$ )

**TABLE 1** Studies characteristics Rotterdam-I-II-III and ERF studies

Study Descriptives							
Study	N	Mean Age	Age SD	Age Range	% Men	Mean VCDR	VCDR Range
RS-I	5,573	68.0	8.4	55–99	40.90%	0.50	0.05–0.87
RS-II	1,987	64.7	7.7	55–96	46.10%	0.50	0.10–0.86
RS-III	2,873	57.2	6.6	46–90	43.90%	0.29	0.00–1.00
ERF	2,008	48.3	13.8	18–85	43.97%	0.31	0.00–0.87

SD, standard deviation; VCDR, vertical-cup disc ratio

out of the seven confirmed loci, the top associated variant was the same (rs1192415 close to *TGFBR3*, rs7916410 close to *ATOH7*, and rs9613667 in *CHEK2*). For the other four loci, top variants were different in each meta-analysis (Supp. Table S5). In all cases, the identified variants were in LD ( $0.74 < r^2 < 1$ ) with the variant previously reported by the IGCC.

## 4 | DISCUSSION

We showed that the HRC imputations improve the concordance between directly assayed and imputed genotypes over a large range of MAFs. In addition, our VCDR analyses show that the  $P$  values obtained with HRC imputations compared with 1000GP imputations are on



**TABLE 2** Improvement in *P* value in HRC meta-analysis

GWAS <i>P</i> Value Category	<i>N</i> Variants	% of Variants with Smaller <i>P</i> Value in HRC-Meta-Analysis	Z Score*	<i>P</i> Value*
Genome-wide significant ( $P \leq 5.0 \times 10^{-08}$ )	751	52	1.28	0.202
Suggestive ( $5.0 \times 10^{-08} < P \leq 1.0 \times 10^{-04}$ )	4,683	62	16.47	$3.07 \times 10^{-61}$
Nominally associated ( $1.0 \times 10^{-04} < P \leq 0.05$ )	534,998	49	-16.92	$1.53 \times 10^{-64}$
No associated ( $0.05 < P \leq 1$ )	7,321,737	48	-119.23	$< 1.0 \times 10^{-230}$

Variants from 1000GP and HRC meta-analyses were divided into four categories, that is, genome-wide associated, suggestive, nominally associated and not associated.

\*Z score and *P* value from a proportion z test, in which  $H_0 = 50\%$ .

average significantly smaller for suggestive variants. The improvements were also seen with common variants, predicting that HRC imputations may also be relevant for finding new common variants.

As described by the HRC (McCarthy et al., 2016), the imputation accuracy (measured by the  $R^2$ ) is higher when using the HRC panel. In our comparisons, 93.27% ( $n = 19,802$  out of 21,230) of the common variants imputed with 1000GP had a  $R^2 > 0.8$ ; this percentage increased to 98.74% in HRC ( $n = 20,962$  out of 21,230; Supp. Table S6). Despite the overall improvement, there is still a group of common variants with  $R^2 < 0.3$  that showed a low concordance rate (i.e., <90%). Of these, about 18% (eight out of 44) are located in inaccessible regions of the genome that represent a challenge for short-read technologies (Deelen et al., 2014; Genome of the Netherlands, 2014; Genomes Project et al., 2010; Genomes Project et al., 2012) (Supp. Table S7). Investment in long-read sequencing and single-molecule mapping, along with improvements in the generation of high-quality de novo assemblies of genomes, will advance our understanding of the genome and its variation, and will further improve the accuracy of genotype imputations (Berlin et al., 2015; Chaisson, et al., 2015).

In this study, we focused on the assessment of genotype concordance rate rather than on the  $R^2$  changes as described by the HRC in McCarthy et al. We calculated and assessed the concordance rate between high-quality genotypes (Grove et al., 2013) from the exome array (enriched in low-frequency and rare variants) and imputed genotypes. The general implication of our study is that for common variants ( $MAF > 0.05$ ), improvement in concordance supports the view that *best-guess* genotypes, instead of directly assayed data, can be used for replication of GWAS findings but also for Mendelian Randomization studies, particularly when  $R^2$  is  $> 0.8$ . For low-frequency variants ( $0.01 < MAF < 0.05$ ), the improvement in concordance is relevant for gene discovery, as previously highlighted by the HRC (McCarthy et al., 2016). A marked improvement was observed for variants with  $R^2_{1000GP}$  0.3–0.8 (Fig. 2E). Thus, low-frequency variants commonly filtered out in meta-analyses of GWAS at present might be studied reliably using HRC imputations. For rare variants ( $0.001 < MAF < 0.01$ ), there is also a relevant improvement in concordance that facilitates in silico validation of findings of exome array or sequencing results, and gene discovery. Finally, for rare variation we observed that the concordance of well-imputed variants increased by 20% (65% in 1000GP vs. to 86% in HRC).

The HRC panel incorporates 64,976 haplotypes, including 998 Dutch haplotypes from the GoNL (Genome of the Netherlands, 2014;

van Leeuwen et al., 2015); previous studies have shown that sample size of the reference panel is often more important than population matching (Huang et al., 2015; Marchini & Howie, 2010). This finding was also observed in a previous study (Deelen et al., 2014), in which a combined reference panel including GoNL and 1000GP yielded the best imputation results. This suggests that the improvement in genotype concordance observed in our study is related to the increase sample size of the HRC.

Our analysis of VCDR in the Rotterdam and ERF cohorts used the same group of individuals, thus allowing an informative comparison between meta-analysis results performed with genotypes imputed with 1000GP versus genotypes imputed with HRC. We showed that for over a large range of MAFs, including common variants, a significant improvement in *P* values can be achieved with HRC imputations. The same trend was observed when *P* values from both meta-analyses were compared (Supp. Fig. S3). Table 2 shows that the percentage of genome-wide significant, and particularly, suggestive variants in the GWAS performed using the genetic data imputed with the HRC reference panel is larger compared with the GWAS using the 1000GP reference panel. Given the same sample size ( $n = 12,441$ ), we confirmed in the 1000GP meta-analysis seven previously reported VCDR-loci (Springelkamp et al., 2014, 2016), whereas in the HRC meta-analysis an additional known VCDR-locus (close to *TMTC2*) was confirmed. The main difference between 1000GP and HRC meta-analysis at the *TMTC2* locus is at the regression coefficient and standard error ( $\beta(SE)_{1000GP} = -0.010(0.002)$  vs.  $\beta(SE)_{HRC} = -0.011(0.0019)$ ). These loci have been reported in the HapMap and 1000GP GWAS meta-analyses conducted by the IGGC, which included 27,878 and 32,272 individuals, respectively (Springelkamp et al., 2014, 2016).

A potential limitation in this study is that we used exome array data as benchmark, and genotype calling may be subject to error. However, data were jointly called with around 62,000 other samples, thereby improving the accuracy of our genotype calls (Grove et al., 2013). Assessment of concordance using exome-array genotypes allowed us to compare the performance of the both reference panels independently of the post-imputation metric ( $R^2$ ) derived from imputation software. Our sample size limits the assessment of very rare variants ( $MAF < 0.001$ ); however, the same trend was observed for these variants (Supp. Table S3). We analyzed a genetically homogeneous Dutch population, thus we cannot predict the performance of HRC in non-Europeans. Assessment in other populations will reveal the performance of HRC and 1000GP panels in non-European samples. Our

findings provide further evidence for the gain in power when a large reference panel as released by the HRC is used for imputations. We have shown that concordance between data directly assayed in the exome array and HRC imputations is high, particularly, for variants with an  $R^2 > 0.8$  across a wide range of allele frequencies. Furthermore, our analyses of VCDR data in 12,441 subjects showed smaller  $P$  values for common and rare variants when using the HRC panel. Thus, imputations with HRC and other larger reference panels improves the statistical power to discover both common and low-frequency variants, opening new avenues for fine-mapping and gene discovery.

## ACKNOWLEDGMENTS

The generation and management of GWAS genotype data for the Rotterdam Study (RS-I, RS-II, RS-III) was executed by the Human Genotyping Facility of the Genetic Laboratory of the Department of Internal Medicine, Erasmus MC, Rotterdam, The Netherlands. This study makes use of an extended dataset of RS-II and RS-III samples based on Illumina Omni 2.5 and 5.0 GWAS genotype data. We thank Pascal Arp, Mila Jhamai, Marijn Verkerk, Lizbeth Herrera and Marjolein Peters, MSc, and Carolina Medina-Gomez, PhD, for their help in creating the GWAS database. We acknowledge the contribution of Ada Hooghart, Corina Brussee, Riet Bernaerts-Biskop, Patricia van Hilten, Petra Ver-aart, and Jeanette Vergeer. The authors are grateful to the study participants, the staff from the ERF Study and the Rotterdam Study, and the participating general practitioners and pharmacists.

## DISCLOSURE STATEMENT

The authors declare no conflict of interest.

## REFERENCES

- Aulchenko, Y. S., Heutink, P., Mackay, I., Bertoli-Avella, A. M., Pullen, J., Vaessen, N., ... van Duijn, C. M. (2004). Linkage disequilibrium in young genetically isolated Dutch population. *European Journal of Human Genetics*, *12*(7), 527–534.
- Aulchenko, Y. S., Ripke, S., Isaacs, A., & van Duijn, C. M. (2007). GenABEL: An R library for genome-wide association analysis. *Bioinformatics*, *23*(10), 1294–1296.
- Aulchenko, Y. S., Struchalin, M. V., & van Duijn, C. M. (2010). ProbABEL package for genome-wide association analysis of imputed data. *BMC Bioinformatics*, *11*:134.
- Berlin, K., Koren, S., Chin, C. S., Drake, J. P., Landolin, J. M., & Phillippy, A. M. (2015). Assembling large genomes with single-molecule sequencing and locality-sensitive hashing. *Nature Biotechnology*, *33*(6), 623–630.
- Boomsma, D. I., Wijmenga, C., Slagboom, E. P., Swertz, M. A., Karssen, L. C., Abdellaoui, A., ... van Duijn, C. M. (2014). The Genome of the Netherlands: Design, and project goals. *European Journal of Human Genetics*, *22*(2), 221–227.
- Browning, B. L., & Browning, S. R. (2009). A unified approach to genotype imputation and haplotype-phase inference for large data sets of trios and unrelated individuals. *American Journal of Human Genetics*, *84*(2), 210–223.
- Chaisson, M. J., Wilson, R. K., & Eichler, E. E. (2015). Genetic variation and the de novo assembly of human genomes. *Nature Reviews Genetics*, *16*(11), 627–640.
- Charlesworth, J., Kramer, P. L., Dyer, T., Diego, V., Samples, J. R., Craig, J. E., ... Wirtz, M. K. (2010). The path to open-angle glaucoma gene discovery: Endophenotypic status of intraocular pressure, cup-to-disc ratio, and central corneal thickness. *Investigation Ophthalmology and Visual Science*, *51*(7), 3509–3514.
- Consortium, U. K., Walter, K., Min, J. L., Huang, J., Crooks, L., Memari, Y., ... Soranzo, N. (2015). The UK10K project identifies rare variants in health and disease. *Nature*, *526*(7571), 82–90.
- Das, S., Forer, L., Schonherr, S., Sidore, C., Locke, A. E., Kwong, A., ... Fuchsberger, C. (2016). Next-generation genotype imputation service and methods. *Nature Genetics*, *48*(10), 1284–1287.
- Deelen, P., Menelaou, A., van Leeuwen, E. M., Kanterakis, A., van Dijk, F., Medina-Gomez, C., ... Swertz, M. A. (2014). Improved imputation quality of low-frequency and rare variants in European samples using the 'Genome of The Netherlands'. *European Journal of Human Genetics*, *22*(11), 1321–1326.
- Genome of the Netherlands C. (2014). Whole-genome sequence variation, population structure and demographic history of the Dutch population. *Nature Genetics*, *46*(8), 818–825.
- Genomes Project, C., Abecasis, G. R., Altshuler, D., Auton, A., Brooks, L. D., Durbin, R. M., ... McVean, G. A. (2010). A map of human genome variation from population-scale sequencing. *Nature*, *467*(7319), 1061–1073.
- Genomes Project, C., Abecasis, G. R., Auton, A., Brooks, L. D., DePristo, M. A., Durbin, R. M., ... McVean, G. A. (2012). An integrated map of genetic variation from 1,092 human genomes. *Nature*, *491*(7422), 56–65.
- Genomes Project, C., Auton, A., Brooks, L. D., Durbin, R. M., Garrison, E. P., Kang, H. M., ... Abecasis, G. R. (2015). A global reference for human genetic variation. *Nature*, *526*(7571), 68–74.
- Grove, M. L., Yu, B., Cochran, B. J., Haritunians, T., Bis, J. C., Taylor, K. D., ... Boerwinkle, E. (2013). Best practices and joint calling of the HumanExome BeadChip: The CHARGE Consortium. *PLoS One*, *8*(7), e68095.
- Hao, K., Chudin, E., McElwee, J., & Schadt, E. E. (2009). Accuracy of genome-wide imputation of untyped markers and impacts on statistical power for association studies. *BMC Genetics*, *10*:27.
- Hofman, A., Brusselle, G. G., Darwish Murad, S., van Duijn, C. M., Franco, O. H., Goedegebure, A., ... Vernooij, M. W. (2015). The Rotterdam Study: 2016 objectives and design update. *European Journal of Epidemiology*, *30*(8), 661–708.
- Huang, J., Howie, B., McCarthy, S., Memari, Y., Walter, K., Min, J. L., ... Soranzo, N. (2015). Improved imputation of low-frequency and rare variants using the UK10K haplotype reference panel. *Nature Communications*, *6*, 8111.
- Li, Y., Willer, C., Sanna, S., & Abecasis, G. (2009). Genotype imputation. *Annual Review of Genomics and Human Genetics*, *10*, 387–406.
- Marchini, J., & Howie, B. (2010). Genotype imputation for genome-wide association studies. *Nature Reviews Genetics*, *11*(7), 499–511.
- McCarthy, M. I., Abecasis, G. R., Cardon, L. R., Goldstein, D. B., Little, J., Ioannidis, J. P., & Hirschhorn, J. N. (2008). Genome-wide association studies for complex traits: Consensus, uncertainty and challenges. *Nature Reviews Genetics*, *9*(5), 356–369.
- McCarthy, S., Das, S., Kretschmar, W., Delaneau, O., Wood, A. R., Teumer, A., ... Haplotype Reference Consortium. (2016). A reference panel of 64,976 haplotypes for genotype imputation. *Nature Genetics*, *48*(10), 1279–1283.
- Pardo, L. M., MacKay, I., Oostra, B., van Duijn, C. M., & Aulchenko, Y. S. (2005). The effect of genetic drift in a young genetically isolated population. *Annals of Human Genetics*, *69*(Pt 3), 288–295.
- Price, A. L., Spencer, C. C., & Donnelly, P. (2015). Progress and promise in understanding the genetic basis of common diseases. *Proceedings of the Royal Society B Biological Sciences*, *282*(1821), 20151684.

- Springelkamp, H., Hohn, R., Mishra, A., Hysi, P. G., Khor, C. C., Loomis, S. J., ... Hammond, C. J. (2014). Meta-analysis of genome-wide association studies identifies novel loci that influence cupping and the glaucomatous process. *Nature Communications*, 5, 4883.
- Springelkamp, H., Iglesias, A. I., Mishra, A., Hohn, R., Wojciechowski, R., Khawaja, A. P., ... MacGregor, S. (2017). New insights into the genetics of primary open-angle glaucoma based on meta-analyses of intraocular pressure and optic disc characteristics. *Hum Mol Genet*, 26(2), 438–453. <https://doi.org/10.1093/hmg/ddw399>
- van Leeuwen, E. M., Kanterakis, A., Deelen, P., Kattenberg, M. V., Genome of the Netherlands C, Slagboom, P. E., ... Hottenga, J. J. (2015). Population-specific genotype imputations using minimac or IMPUTE2. *Nature Protocols*, 10(9), 1285–1296.
- Willer, C. J., Li, Y., & Abecasis, G. R. (2010). METAL: Fast and efficient meta-analysis of genomewide association scans. *Bioinformatics*, 26(17), 2190–2191.
- Winkler, T. W., Day, F. R., Croteau-Chonka, D. C., Wood, A. R., Locke, A. E., Magi, R., ... Genetic Investigation of Anthropometric Traits (GIANT) Consortium. (2014). Quality control and conduct of genome-wide association meta-analyses. *Nature Protocols*, 9(5), 1192–1212.

### SUPPORTING INFORMATION

Additional Supporting Information may be found online in the supporting information tab for this article.

**How to cite this article:** Iglesias AI, van der Lee SJ, Bonnemaijer PWM, et al. Haplotype reference consortium panel: Practical implications of imputations with large reference panels. *Human Mutation*. 2017;00:1–8. <https://doi.org/10.1002/humu.23247>