

PDF hosted at the Radboud Repository of the Radboud University Nijmegen

The following full text is a publisher's version.

For additional information about this publication click this link.

<http://hdl.handle.net/2066/183866>

Please be advised that this information was generated on 2019-06-02 and may be subject to change.

Geographic distribution of rare variants associated with age-related macular degeneration

Maartje J. Geerlings,¹ Eveline Kersten,¹ Joannes M.M. Groenewoud,² Lars G. Fritsche,³ Carel B. Hoyng,¹ Eiko K. de Jong,¹ Anneke I. den Hollander^{1,4}

(The first two authors contributed equally to this work.)

¹Department of Ophthalmology, Donders Institute for Brain, Cognition and Behaviour, Radboud University Medical Center, Nijmegen, the Netherlands; ²Department for Health Evidence, Radboud University Medical Center, Nijmegen, the Netherlands; ³Department of Public Health and Nursing, Faculty of Medicine and Health Sciences, NTNU, Norwegian University of Science and Technology Trondheim, Norway; ⁴Department of Human Genetics, Donders Institute for Brain, Cognition and Behaviour, Radboud University Medical Center, Nijmegen, the Netherlands

Purpose: A recent genome-wide association study by the International Age-related Macular Degeneration Genomics Consortium (IAMDGC) identified seven rare variants that are individually associated with age-related macular degeneration (AMD), the most common cause of vision loss in the elderly. In literature, several of these rare variants have been reported with different frequencies and odds ratios across populations of Europe and North America. Here, we aim to describe the representation of these seven AMD-associated rare variants in different geographic regions based on 24 AMD studies.

Methods: We explored the occurrence of seven rare variants independently associated with AMD (*CFH* rs121913059 (p.Arg1210Cys), *CFI* rs141853578 (p.Gly119Arg), *C3* rs147859257 (p.Lys155Gln), and *C9* rs34882957 (p.Pro167Ser)) and three non-coding variants in or near the *CFH* gene (rs148553336, rs35292876, and rs191281603) in 24 AMD case-control studies. We studied the difference in distribution, interaction, and effect size for each of the rare variants based on the minor allele frequency within the different geographic regions.

Results: We demonstrate that two rare AMD-associated variants in the *CFH* gene (rs121913059 [p.Arg1210Cys] and rs35292876) deviate in frequency among different geographic regions ($p=0.004$ and $p=0.001$, respectively). The risk estimates of each of the seven rare variants were comparable across the geographic regions.

Conclusions: The results emphasize the importance of identifying population-specific rare variants, for example, by performing sequencing studies in case-control studies of various populations, because their identification may have implications for diagnostic screening and personalized treatment.

Genetic diversity is observed among populations of different ancestries. Allele frequencies can exhibit large diversity among populations due to forces such as genetic drift and natural selection. Although most common variants are shared worldwide, rare variants (minor allele frequency [MAF] <1%) have the tendency to cluster in specific populations. Population-specific rare variants tend to have a strong functional effect [1].

In age-related macular degeneration (AMD), large variability in rare variant frequency has been reported in case-control studies of various populations; for instance, for variant rs121913059 (p.Arg1210Cys) in complement factor H (*CFH*; HGNC 4883, OMIM 134370). *CFH* rs121913059 was first reported in a case-control study from the United

States [2]. Several studies replicated the finding [3-5], but other Caucasian studies [6-9] and Asian studies [10,11] were unable to replicate the strong association (Table 1). Another example, variant rs141853578 (p.Gly119Arg) in complement factor I (*CFI*; HGNC 5394, OMIM 217030) first reported in a European cohort [7], was screened in a British [12] and American [13] cohort (odds ratio [OR] = 22.2; 8.5 and 2.6, respectively). However, although the variant was associated with AMD, the risk effect size was much weaker when compared to the first report.

In a recent genome-wide association study conducted by the International Age-related Macular Degeneration Genomics Consortium (IAMDGC) [3], seven rare variants were observed to independently confer risk for AMD. All seven rare variants are localized in or near genes encoding components of the complement system, namely, *CFH*, *CFI*, and complement components 3 and 9 (*C3*, HGNC 1318, OMIM 120700 and *C9*, HGNC: 1358, OMIM 120940).

Correspondence to: Anneke I. den Hollander, Department of Ophthalmology, Radboud University Medical Center, PO Box 9101, 6500 HB Nijmegen, the Netherlands; Phone: +31 (0)24 3619195; FAX: +31 (0)24 3619195; email: anneke.denhollander@radboudumc.nl

TABLE 1. MINOR ALLELE FREQUENCIES OF THE *CFH* rs121913059 (p.ARG1210Cys) VARIANT AMONG DIFFERENT GEOGRAPHICAL REGIONS REPORTED IN LITERATURE.

Descent	Previous reports	Carriers (n)	Total Cases (n)	Total Controls (n)	MAF Cases (%)‡	MAF Controls (%)‡	Odds-Ratio	P-value
<i>Various populations, European descent</i>	Fritsche 2016 [3]	108	16,144	17,832	0.319	0.014	20.3	8.9×10^{-24}
	Raychaudhuri 2011 [2]#	34	2414	1120	0.684	0.045	NA	8.0×10^{-5}
Eastern USA	Zhan 2013 [5]	24	2268	2268	0.507	0.022	23.1	2.9×10^{-6}
	Helgason 2013 [8]	0	1143	51,435	0.000	0.000	NA	NA
European	Saksens 2016 [9]*	0	1589	1386	0.000	0.000	NA	NA
	Recalde 2016 [4]	5	259	330	0.965	0.000	NA	NA
Asian	Shen 2012 [11]	0	258	426	0.000	0.000	NA	NA
	Miyake 2015 [10]	1	1364	1208	0.037	0.000	NA	NA

Additional publications from: the Boston study* [13,15] and EUGENDA study* [6,7]. † major allele C, minor allele T. NA=Not available or not reported.

The difference in association for rare variants among different AMD case-control studies may reflect the difference in distribution of such rare alleles across geographic regions. This observation raises the question whether these variants identified by the IAMDGCC are represented in all case-control studies or whether the association is driven by one or more studies from a specific geographic region. Therefore, we sought to evaluate the representation of these seven AMD-associated rare variants in 24 AMD case-control studies of different geographic regions.

METHODS

Data for this study were provided by the IAMDGCC. The genotypes are in part available via dbGaP under accession number phs001039.v1.p1. The original data set contained data from 40,633 individuals of European ancestry as described by Fritsche et al. [3].

For analyses of the current study, participants from the Utah case-control study were excluded due to their mixed regions of origin. In addition, the Jerusalem case-control study was excluded due to its small sample size compared to the other geographic regions. Final analyses were performed on 39,582 participants derived from 24 of 26 studies [3]. The included studies were grouped in five geographic regions: eastern USA, western Europe, Britain, western USA, and Australia (Table S1). Data were collected by all study groups in accordance with the tenets of the Declaration of Helsinki; participants provided informed consent, and study protocols were approved by local ethical committees [3]. Ancestry was determined based on the first two principal components using autosomal genotyped variants together with genotype information of the samples from the Human Genome Diversity Project [3]. The final data set included 39,582 successfully genotyped subjects, including 15,527 advanced AMD cases, 6,537 non-advanced AMD cases, and 17,518 control individuals of European ancestry.

The MAF in each region was calculated and compared independently of AMD status. For comparison of effect sizes and interaction analyses, individuals were assigned “AMD” when they exhibited signs of (1) advanced AMD defined as geographic atrophy and/or choroidal neovascularization in at least one eye, or (2) non-advanced AMD defined as pigmentary changes in the macula and/or more than five macular drusen with a diameter more than 63 μm . Individuals without any reported signs of AMD were assigned “No AMD.”

Genotype data of seven rare genetic variants were selected from array-based data generated by the IAMDGCC [3]. Fritsche et al. [3] showed these seven rare variants were independently associated with AMD: *CFH* rs121913059

(p.Arg1210Cys), *CFI* rs141853578 (p.Gly119Arg), *C3* rs147859257 (p.Lys155Gln), and *C9* rs34882957 (p.Pro167Ser) and three non-coding variants in or near *CFH* (rs148553336, rs35292876, and rs191281603).

The software package SAS (Statistical Analysis System Institute, SAS Institute Inc., Cary, NC, V9.2) was used to compare MAFs between the different geographic regions in a logistic regression analysis with the Firth correction (S1 Supporting information) [14]. Furthermore, we estimated the mean allele frequency of each rare genetic variant in each of the geographic regions including a 95% confidence interval (details provided in S1 Supporting information). To study the potential difference in the effect size of each variant between the geographic regions, interaction analyses were performed using binary logistic regression models with SPSS statistics software (IBM SPSS Statistics, IBM SPSS Statistics for Windows, Version 22.0. Armonk, NY, V22.0).

RESULTS

Demographic characteristics for each of the five geographic regions are shown in Supporting Information Table S1. The characteristics of the participants from the different regions were comparable, although the British study samples were slightly younger than the others, and the western European study samples included relatively more female participants compared to the remainder. These differences were comparable in the cases and the controls.

We analyzed the difference in distribution of the seven rare variants among case-control studies from eastern USA, western Europe, Britain, western USA, and Australia using logistic regression analysis with the Firth correction (Table 2; Figure 1) and observed a difference in the distribution of the variants *CFH* rs121913059 (p.Arg1210Cys, p=0.004) and *CFH* rs35292876 (p=0.001) across the different geographic regions. *CFH* rs121913059 was found at a higher frequency in eastern USA, especially compared to Britain and Australia (p=0.011 and p=0.003, respectively). *CFH* rs35292876 was found at a higher frequency in western Europe, compared to all other regions (ranging from p<0.001 in Britain to p=0.012 in eastern USA). The distribution of variants *CFH* rs121913059 (p.Arg1210Cys) and *CFH* rs35292876 was not confounded by the distribution of individuals with advanced and non-advanced AMD across the geographic regions (Table S2). The other five variants were found to have similar allele frequencies among all geographic regions.

The difference in distribution is also reflected by the estimated MAFs of each variant in the different geographic regions (Table S3). The allele frequency of *CFH* rs121913059 is nearly three times higher in eastern USA than in Britain

TABLE 2. DISTRIBUTION AND INTERACTION ANALYSIS OF SEVEN RARE AMD-ASSOCIATED GENETIC VARIANTS ACROSS FIVE GEOGRAPHICAL REGIONS.

Gene	Difference in distribution between geographical regions [#]	Interaction Analysis [*]	Overall effect size [‡]
	p-value	p-value	OR (95%CI)
<i>CFH</i> rs121913059 (p.Arg1210Cys)	0.004	0.665	24.2 (8.9–65.6)
<i>CFI</i> rs141853578 (p.Gly119Arg)	0.707	0.563	3.7 (2.5–5.7)
<i>C3</i> rs147859257 (p.Lys155Gln)	0.665	0.680	2.8 (2.3–3.4)
<i>C9</i> rs34882957 (p.Pro167Ser)	0.315	0.572	1.7 (1.5–2.0)
<i>CFH</i> rs148553336	0.053	0.015	0.5 (0.4–0.6)
<i>CFH</i> rs35292876	0.001	0.709	2.3 (2.0–2.6)
<i>CFH</i> rs191281603	0.735	0.980	0.9 (0.7–1.1)

[#]Logistic Regression with Firth correction. Individual Wald Chi-Square from likelihood ratio test for each of the variants across the geographical regions. ^{*}Interaction Analysis: Effect sizes in entire study and interaction analysis to study potential differences in effect size between cohorts. [‡]Overall effect size adjusted for geographical region. Bold values: p value considered significant after Bonferroni correction ($p < 0.007$).

and Australia. Noteworthy is the near absence of this risk variant in control individuals without AMD, indicating that the difference in distribution appears to be driven solely by individuals with AMD (Table S4).

To determine whether the effect size was influenced by geographic region, we performed interaction analyses for each variant. We observed that the risk associated with each specific rare variant is independent of the geographic region (Table 2). The overall effect sizes of the rare variants are comparable to the effect sizes reported in the IAMDCG study [3].

DISCUSSION

The distribution of rare *CFH* variants rs121913059 (p.Arg1210Cys) and rs35292876 was significantly different between several of the studied geographic regions. This result confirms differences reported in previous studies for the *CFH* rs121913059 variant [2-11,13,15] (Table 1). *CFH* rs121913059 was first associated with AMD in a study from the USA [2]; however, the association was not consistently replicated in Dutch/German [7], Icelandic [8], Japanese [10], and Chinese [11] studies. In this study, we confirmed the hypothesis that rare variants can be differently distributed among geographic regions, but as expected, the risk estimates are comparable across the geographic regions. Rare variants tend to be recent, and therefore, their distribution tends to be restricted to a specific region. Interpretation of rare variants, therefore, may be focused to a geographic region or population [16,17].

In AMD, a difference in geographic distribution has already been described for common risk haplotypes of the *CFH* and *ARMS2* (HGNC: 32685, OMIM 611313) genes, which are the most prominent common genetic AMD risk factors [3]. Although Asian populations report a lower frequency of *CFH* risk haplotypes, the opposite holds true for the *ARMS2/HTRA1* risk haplotype which is more prevalent in Asians compared to Caucasian populations [18,19]. These patient- and population-specific variations have implications for genetic counseling and carrier screening in diagnostic and research settings.

In addition to single variant associations, a significant burden of rare variants in the *CFH* and *CFI* genes has been reported for AMD [3,15]. The disease burden in these genes is attributed to the cumulative effect of rare coding variants, some of which are identified in multiple studies, while others are restricted to a single population or even a single patient [20]. Carriers of specific rare genetic variants in the complement genes that increase complement activation may benefit more from complement-inhibiting therapy than those who do not carry such variants [20]. Personalized treatment aiming at complement-activating rare variants in clinical trials may be applicable only to specific populations where these variants are sufficiently common.

It is likely that additional rare variants, other than *CFH* Arg1210Cys and rs35292876, fluctuate in frequency among geographic regions. To identify these variants, additional large sequencing studies will need to be performed in populations

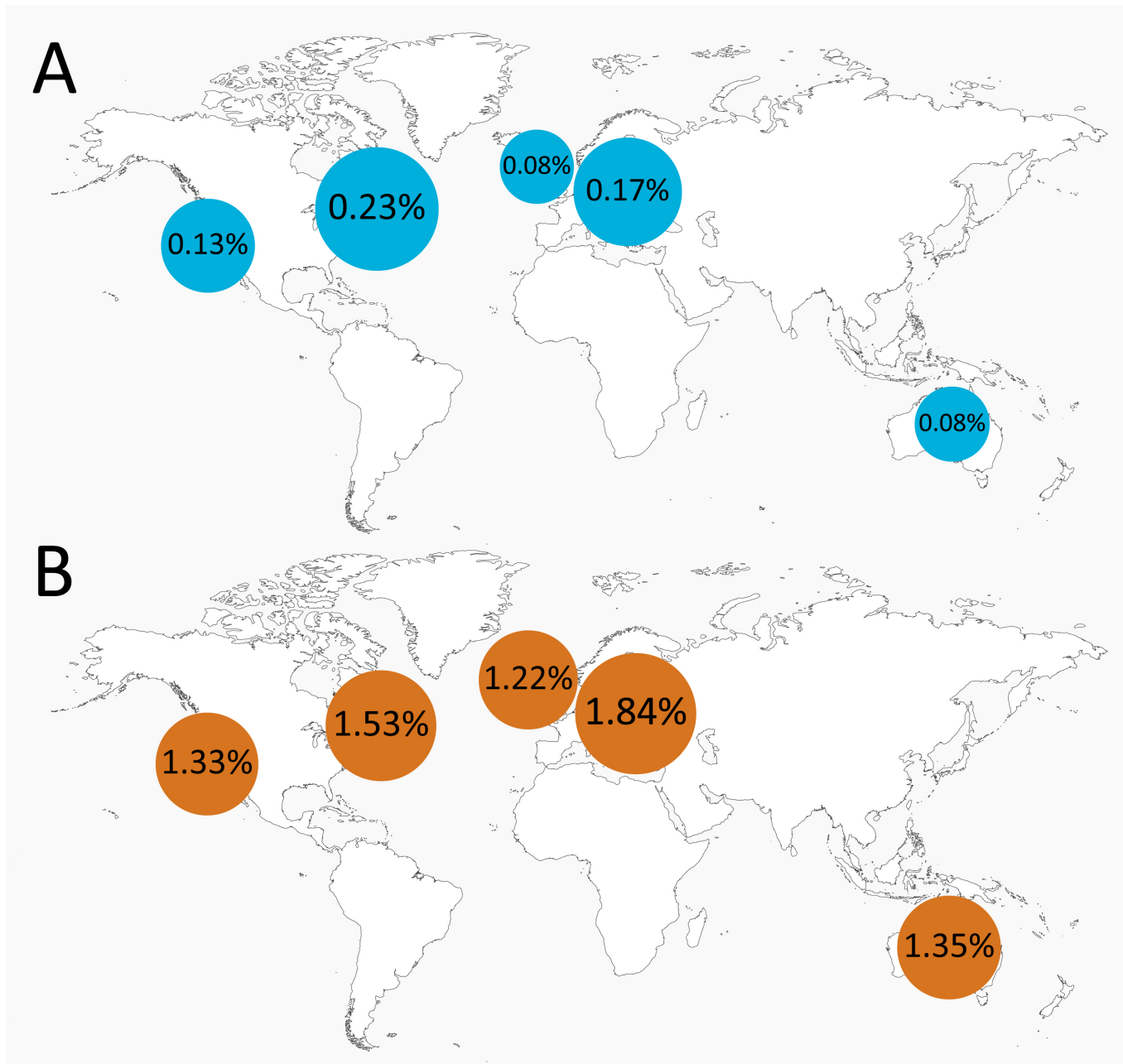


Figure 1. The two rare variants in *CFH* that are differently distributed variants among different geographic regions. Minor allele frequencies (in percentage) for *CFH* rs121913059 (A) and *CFH* rs35292876 (B). Variants mapped to geographic location (from left to right): western USA, eastern USA, Britain, western Europe, and Australia.

originating from diverse geographic regions. Until now, large sequencing initiatives are predominantly of North American or European origin, and sample sizes for non-European-descent population are limited [3,21]. Recruiting case-control studies from other geographic regions and ancestries could allow for identification of novel highly penetrant rare variants implicated in AMD pathogenesis. These variants may be located in known AMD pathways, such as the complement

system, or novel pathways [22]. For example, Asian populations have a different genetic predisposition for AMD than Europeans. Only half of the common European loci could be replicated in East Asians [23]. Furthermore, the rare variants *CFH* rs121913059 (p.Arg1210Cys), *CFI* rs141853578 (p.Gly119Arg), and *C3* rs147859257 (p.Lys155Gln) were not identified in Asian populations according to public database gnomAD [24]. It has been postulated that rare variants in

Asian populations may be found in other genes, for example, involved in cholesterol and lipid metabolism [25].

In conclusion, we demonstrated that rare AMD-associated variants *CFH* rs121913059 and rs35292876 are differently distributed among different geographic regions. These results emphasize the importance of identifying population-specific rare variants in AMD.

APPENDIX 1.

Code for the software package SAS for a logistic regression analysis and Firth's bias correction. To access the data, click or select the words "[Appendix 1](#)"

APPENDIX 2.

List of members of the Age-related Macular Degeneration Genomics Consortium. To access the data, click or select the words "[Appendix 2](#)"

APPENDIX 3.

Demographic characteristics of AMD cohorts grouped in five geographical regions. To access the data, click or select the words "[Appendix 3](#)"

APPENDIX 4.

Overall estimated mean MAF of *CFH* rs121913059 (p.Arg1210Cys) and *CFH* rs35292876 across five geographical regions in the complete study and subdivided for individuals with and without advanced AMD. ¹ Advanced AMD defined as geographic atrophy and/or choroidal neovascularization in at least one eye. ² Non-advanced AMD defined as pigmentary changes in the macula and/or more than five macular drusen with a diameter >63 µm or individuals without any reported signs of AMD. To access the data, click or select the words "[Appendix 4](#)"

APPENDIX 5.

Overall estimated mean MAF of seven rare AMD-associated genetic variants across five geographical regions. To access the data, click or select the words "[Appendix 5](#)"

APPENDIX 6.

Minor allele frequencies (%) of seven rare AMD-associated genetic variants across five geographical regions stratified by AMD status. To access the data, click or select the words "[Appendix 6](#)"

ACKNOWLEDGMENTS

We would like to acknowledge the contribution of the International AMD Genomics Consortium (IAMDGC) that is supported by a grant from NIH (R01EY022310). Full list of IAMDGC members is provided in S2 Appendix. Genotyping was supported by a contract (HHSN2682012000081) to the Center for Inherited Disease Research. The research leading to these results has received funding from the European Research Council under the European Union's Seventh Framework Programme (FP/2007–2013) / ERC Grant Agreement n. 310644 (MACULA). This project has received funding from the *European Union's Horizon 2020 research and innovation program* under grant agreement No 634479.

REFERENCES

- Auton A, Brooks LD, Durbin RM, Garrison EP, Kang HM, Korbel JO, Marchini JL, McCarthy S, McVean GA, Abecasis GR. A global reference for human genetic variation. *Nature* 2015; 526:68-74. [PMID: 26432245].
- Raychaudhuri S, Iartchouk O, Chin K, Tan PL, Tai AK, Ripke S, Gowrisankar S, Vemuri S, Montgomery K, Yu Y, Reynolds R, Zack DJ, Campochiaro B, Campochiaro P, Katsanis N, Daly MJ, Seddon JM. A rare penetrant mutation in *CFH* confers high risk of age-related macular degeneration. *Nat Genet* 2011; 43:1232-6. [PMID: 22019782].
- Fritsche LG, Igl W, Bailey JN, Grassmann F, Sengupta S, Bragg-Gresham JL, Burdon KP, Hebbaring SJ, Wen C, Gorski M, Kim IK, Cho D, Zack D, Souied E, Scholl HP, Bala E, Lee KE, Hunter DJ, Sardell RJ, Mitchell P, Merriam JE, Cipriani V, Hoffman JD, Schick T, Lechanteur YT, Guymer RH, Johnson MP, Jiang Y, Stanton CM, Buitendijk GH, Zhan X, Kwong AM, Boleda A, Brooks M, Gieser L, Ratnapriya R, Branham KE, Foerster JR, Heckenlively JR, Othman MI, Vote BJ, Liang HH, Souzeau E, McAllister IL, Isaacs T, Hall J, Lake S, Mackey DA, Constable IJ, Craig JE, Kitchner TE, Yang Z, Su Z, Luo H, Chen D, Ouyang H, Flagg K, Lin D, Mao G, Ferreyra H, Stark K, von Strachwitz CN, Wolf A, Brandl C, Rudolph G, Olden M, Morrison MA, Morgan DJ, Schu M, Ahn J, Silvestri G, Tsironi EE, Park KH, Farrer LA, Orlin A, Brucker A, Li M, Curcio CA, Mohand-Said S, Sahel JA, Audo I, Benchaboune M, Cree AJ, Rennie CA, Goverdhan SV, Grunin M, Hagbi-Levi S, Campochiaro P, Katsanis N, Holz FG, Blond F, Blanche H, Deleuze JF, Igo RP Jr, Truitt B, Peachey NS, Meuer SM, Myers CE, Moore EL, Klein R, Hauser MA, Postel EA, Courtenay MD, Schwartz SG, Kovach JL, Scott WK, Liew G, Tan AG, Gopinath B, Merriam JC, Smith RT, Khan JC, Shahid H, Moore AT, McGrath JA, Laux R, Brantley MA Jr, Agarwal A, Ersoy L, Caramoy A, Langmann T, Saksens NT, de Jong EK, Hoyng CB, Cain MS, Richardson AJ, Martin TM, Blangero J, Weeks DE, Dhillon B, van Duijn CM, Doheny KF, Romm J, Klaver CC, Hayward C, Gorin MB, Klein ML, Baird PN, den Hollander AI, Fauser S, Yates JR, Allikmets R, Wang JJ, Schaumberg DA, Klein BE, Hagstrom SA, Chowers I,

- Lotery AJ, Leveillard T, Zhang K, Brilliant MH, Hewitt AW, Swaroop A, Chew EY, Pericak-Vance MA, DeAngelis M, Stambolian D, Haines JL, Iyengar SK, Weber BH, Abecasis GR, Heid IM. A large genome-wide association study of age-related macular degeneration highlights contributions of rare and common variants. *Nat Genet* 2016; 48:134-43. [PMID: 26691988].
4. Recalde S, Tortajada A, Subias M, Anter J, Blasco M, Maranta R, Coco R, Pinto S, Noris M, Garcia-Layana A, Rodriguez de Cordoba S. Molecular Basis of Factor H R1210C Association with Ocular and Renal Diseases. *J Am Soc Nephrol* 2016; 27:1305-11. [PMID: 26376859].
 5. Zhan X, Larson DE, Wang C, Koboldt DC, Sergeev YV, Fulton RS, Fulton LL, Fronick CC, Branham KE, Bragg-Gresham J, Jun G, Hu Y, Kang HM, Liu D, Othman M, Brooks M, Ratnapriya R, Boleda A, Grassmann F, von Strachwitz C, Olson LM, Buitendijk GH, Hofman A, van Duijn CM, Cipriani V, Moore AT, Shahid H, Jiang Y, Conley YP, Morgan DJ, Kim IK, Johnson MP, Cantsilieris S, Richardson AJ, Guymer RH, Luo H, Ouyang H, Licht C, Pluthero FG, Zhang MM, Zhang K, Baird PN, Blangero J, Klein ML, Farrer LA, DeAngelis MM, Weeks DE, Gorin MB, Yates JR, Klaver CC, Pericak-Vance MA, Haines JL, Weber BH, Wilson RK, Heckenlively JR, Chew EY, Stambolian D, Mardis ER, Swaroop A, Abecasis GR. Identification of a rare coding variant in complement 3 associated with age-related macular degeneration. *Nat Genet* 2013; 45:1375-9. [PMID: 24036949].
 6. Duvvari MR, Saksens NT, van de Ven JP, de Jong-Hesse Y, Schick T, Nillesen WM, Fauser S, Hoefsloot LH, Hoyng CB, de Jong EK, den Hollander AI. Analysis of rare variants in the CFH gene in patients with the cuticular drusen subtype of age-related macular degeneration. *Mol Vis* 2015; 21:285-92. [PMID: 25814826].
 7. van de Ven JP, Nilsson SC, Tan PL, Buitendijk GH, Ristau T, Mohlin FC, Nabuurs SB, Schoenmaker-Koller FE, Smailhodzic D, Campochiaro PA, Zack DJ, Duvvari MR, Bakker B, Paun CC, Boon CJ, Uitterlinden AG, Liakopoulos S, Klevering BJ, Fauser S, Daha MR, Katsanis N, Klaver CC, Blom AM, Hoyng CB, den Hollander AI. A functional variant in the CFI gene confers a high risk of age-related macular degeneration. *Nat Genet* 2013; 45:813-7. [PMID: 23685748].
 8. Helgason H, Sulem P, Duvvari MR, Luo H, Thorleifsson G, Stefansson H, Jonsdottir I, Masson G, Gudbjartsson DF, Walters GB, Magnusson OT, Kong A, Rafnar T, Kiemenev LA, Schoenmaker-Koller FE, Zhao L, Boon CJ, Song Y, Fauser S, Pei M, Ristau T, Patel S, Liakopoulos S, van de Ven JP, Hoyng CB, Ferreyra H, Duan Y, Bernstein PS, Geirsdottir A, Helgadóttir G, Stefansson E, den Hollander AI, Zhang K, Jonasson F, Sigurdsson H, Thorsteinsdottir U, Stefansson K. A rare nonsynonymous sequence variant in C3 is associated with high risk of age-related macular degeneration. *Nat Genet* 2013; 45:1371-4. [PMID: 24036950].
 9. Saksens NT, Geerlings MJ, Bakker B, Schick T, Daha MR, Fauser S, Boon CJ, de Jong EK, Hoyng CB, den Hollander AI. Rare Genetic Variants Associated With Development of Age-Related Macular Degeneration. *JAMA Ophthalmol* 2016; 134:287-93. [PMID: 26767664].
 10. Miyake M, Saito M, Yamashiro K, Sekiryu T, Yoshimura N. Complement factor H R1210C among Japanese patients with age-related macular degeneration. *Jpn J Ophthalmol* 2015; 59:273-8. [PMID: 26215151].
 11. Shen SK, Liu XQ, Lu F, Yang ZL, Shi Y. [Association study between age-related macular degeneration and R1210C mutation of CFH gene in Chinese population]. *Zhonghua yi xue yi chuan xue za zhi = Zhonghua yixue yichuanxue zazhi = Zhonghua Yi Xue Yi Chuan Xue Za Zhi* 2012; 29:570-2. [PMID: 23042396].
 12. Alexander P, Gibson J, Cree AJ, Ennis S, Lotery AJ. Complement factor I and age-related macular degeneration. *Mol Vis* 2014; 20:1253-7. [PMID: 25352734].
 13. Seddon JM, Yu Y, Miller EC, Reynolds R, Tan PL, Gowrisankar S, Goldstein JI, Triebwasser M, Anderson HE, Zerbib J, Kavanagh D, Souied E, Katsanis N, Daly MJ, Atkinson JP, Raychaudhuri S. Rare variants in CFI, C3 and C9 are associated with high risk of advanced age-related macular degeneration. *Nat Genet* 2013; 45:1366-70. [PMID: 24036952].
 14. King G, Zeng L. Logistic Regression in Rare Events Data. *Polit Anal* 2001; 9:137-63. .
 15. Triebwasser MP, Roberson ED, Yu Y, Schramm EC, Wagner EK, Raychaudhuri S, Seddon JM, Atkinson JP. Rare Variants in the Functional Domains of Complement Factor H Are Associated With Age-Related Macular Degeneration. *Invest Ophthalmol Vis Sci* 2015; 56:6873-8. [PMID: 26501415].
 16. Mathieson I, McVean G. Differential confounding of rare and common variants in spatially structured populations. *Nat Genet* 2012; 44:243-6. [PMID: 22306651].
 17. Auer PL, Lettre G. Rare variant association studies: considerations, challenges and opportunities. *Genome Med* 2015; 7:16-[PMID: 25709717].
 18. Kopplin LJ, Igo RP Jr, Wang Y, Sivakumaran TA, Hagstrom SA, Peachey NS, Francis PJ, Klein ML, SanGiovanni JP, Chew EY, Pauer GJT, Sturgill GM, Joshi T, Tian L, Xi Q, Henning AK, Lee KE, Klein R, Klein BEK, Iyengar SK. Genome-wide association identifies SKIV2L and MYRIP as protective factors for age-related macular degeneration. *Genes Immun* 2010; 11:609-21. [PMID: 20861866].
 19. Hu J, Yuan Y, Shen L, Zhang J, Hu N, Guan H. Age-Related Macular Degeneration-Susceptibility Single Nucleotide Polymorphisms in a Han Chinese Control Population. *Ophthalmic Epidemiol* 2011; 18:137-42. [PMID: 21609242].
 20. Geerlings MJ, Kremlitzka M, Bakker B, Nilsson SC, Saksens NT, Lechanteur YT, Pauper M, Corominas J, Fauser S, Hoyng CB, Blom AM, de Jong EK, den Hollander AI. The Functional Effect of Rare Variants in Complement Genes on C3b Degradation in Patients With Age-Related Macular Degeneration. *JAMA Ophthalmol* 2017; 135:39-46. [PMID: 27918759].
 21. Geerlings MJ, de Jong EK, den Hollander AI. The complement system in age-related macular degeneration: A review of rare

- genetic variants and implications for personalized treatment. *Mol Immunol* 2017; 84:65-76. [PMID: 27939104].
22. Huang LZ, Li YJ, Xie XF, Zhang JJ, Cheng CY, Yamashiro K, Chen LJ, Ma XY, Cheung CM, Wang YS, Zhang CF, Bai YJ, Hou J, Chen XL, Qi Y, Li SS, Sun YY, Mei JP, Cheng Y, Yu WZ, Hu XB, Zhuang FF, Fan L, Lu Y, Sun XH, Zhu XJ, Shen DF, Chan CC, Zhao MW, Yoshimura N, Pang CP, Wong TY, Khor CC, Zhang K, Zhou P, Li XX. Whole-exome sequencing implicates UBE3D in age-related macular degeneration in East Asian populations. *Nat Commun* 2015; 6:6687-[PMID: 25872646].
23. Cheng CY, Yamashiro K, Chen LJ, Ahn J, Huang L, Huang L, Cheung CM, Miyake M, Cackett PD, Yeo IY, Laude A, Mathur R, Pang J, Sim KS, Koh AH, Chen P, Lee SY, Wong D, Chan CM, Loh BK, Sun Y, Davila S, Nakata I, Nakanishi H, Akagi-Kurashige Y, Gotoh N, Tsujikawa A, Matsuda F, Mori K, Yoneya S, Sakurada Y, Iijima H, Iida T, Honda S, Lai TY, Tam PO, Chen H, Tang S, Ding X, Wen F, Lu F, Zhang X, Shi Y, Zhao P, Zhao B, Sang J, Gong B, Dorajoo R, Yuan JM, Koh WP, van Dam RM, Friedlander Y, Lin Y, Hibberd ML, Foo JN, Wang N, Wong CH, Tan GS, Park SJ, Bhargava M, Gopal L, Naing T, Liao J, Ong PG, Mitchell P, Zhou P, Xie X, Liang J, Mei J, Jin X, Saw SM, Ozaki M, Mizoguchi T, Kurimoto Y, Woo SJ, Chung H, Yu HG, Shin JY, Park DH, Kim IT, Chang W, Sagong M, Lee SJ, Kim HW, Lee JE, Li Y, Liu J, Teo YY, Heng CK, Lim TH, Yang SK, Song K, Vithana EN, Aung T, Bei JX, Zeng YX, Tai ES, Li XX, Yang Z, Park KH, Pang CP, Yoshimura N, Wong TY, Khor CC. New loci and coding variants confer risk for age-related macular degeneration in East Asians. *Nat Commun* 2015; 6:6063-[PMID: 25629512].
24. Lek M, Karczewski KJ, Minikel EV, Samocha KE, Banks E, Fennell T, O'Donnell-Luria AH, Ware JS, Hill AJ, Cummings BB, Tukiainen T, Birnbaum DP, Kosmicki JA, Duncan LE, Estrada K, Zhao F, Zou J, Pierce-Hoffman E, Berghout J, Cooper DN, Deflaux N, DePristo M, Do R, Flannick J, Fromer M, Gauthier L, Goldstein J, Gupta N, Howrigan D, Kiezun A, Kurki MI, Moonshine AL, Natarajan P, Orozco L, Peloso GM, Poplin R, Rivas MA, Ruano-Rubio V, Rose SA, Ruderfer DM, Shakir K, Stenson PD, Stevens C, Thomas BP, Tiao G, Tusie-Luna MT, Weisburd B, Won HH, Yu D, Altshuler DM, Ardissino D, Boehnke M, Danesh J, Donnelly S, Elosua R, Florez JC, Gabriel SB, Getz G, Glatt SJ, Hultman CM, Kathiresan S, Laakso M, McCarroll S, McCarthy MI, McGovern D, McPherson R, Neale BM, Palotie A, Purcell SM, Saleheen D, Scharf JM, Sklar P, Sullivan PF, Tuomilehto J, Tsuang MT, Watkins HC, Wilson JG, Daly MJ, MacArthur DG, Exome Aggregation C. Analysis of protein-coding genetic variation in 60,706 humans. *Nature* 2016; 536:285-91. [PMID: 27535533].
25. Wong CW, Yanagi Y, Lee W-K, Ogura Y, Yeo I, Wong TY, Cheung CMG. Age-related macular degeneration and polypoidal choroidal vasculopathy in Asians. *Prog Retin Eye Res* 2016; 53:Supplement C107-39. [PMID: 27094371].

Articles are provided courtesy of Emory University and the Zhongshan Ophthalmic Center, Sun Yat-sen University, P.R. China. The print version of this article was created on 27 January 2018. This reflects all typographical corrections and errata to the article through that date. Details of any changes may be found in the online version of the article.