



Revisiting the Phase Curves of WASP-43b: Confronting Re-analyzed Spitzer Data with Cloudy Atmospheres

Mendonça, João; Malik, Matej; Demory, Brice-Olivier; Heng, Kevin

Published in:
Astrophysical Journal

Link to article, DOI:
[10.3847/1538-3881/aaeabc](https://doi.org/10.3847/1538-3881/aaeabc)

Publication date:
2018

Document Version
Publisher's PDF, also known as Version of record

[Link back to DTU Orbit](#)

Citation (APA):
Mendonça, J. M., Malik, M., Demory, B-O., & Heng, K. (2018). Revisiting the Phase Curves of WASP-43b: Confronting Re-analyzed Spitzer Data with Cloudy Atmospheres. *Astrophysical Journal*, 155(4), [150]. DOI: 10.3847/1538-3881/aaeabc

General rights

Copyright and moral rights for the publications made accessible in the public portal are retained by the authors and/or other copyright owners and it is a condition of accessing publications that users recognise and abide by the legal requirements associated with these rights.

- Users may download and print one copy of any publication from the public portal for the purpose of private study or research.
- You may not further distribute the material or use it for any profit-making activity or commercial gain
- You may freely distribute the URL identifying the publication in the public portal

If you believe that this document breaches copyright please contact us providing details, and we will remove access to the work immediately and investigate your claim.



Revisiting the Phase Curves of WASP-43b: Confronting Re-analyzed *Spitzer* Data with Cloudy Atmospheres

João M. Mendonça^{1,2,3} , Matej Malik³ , Brice-Olivier Demory³ , and Kevin Heng³ 

¹ Astrophysics and Atmospheric Physics, National Space Institute, Technical University of Denmark, Elektrovej, DK-2800, Kgs. Lyngby, Denmark

² University of Copenhagen, Centre for Star and Planet Formation, Niels Bohr Institute and Natural History Museum, DK-1350, Copenhagen, Denmark

³ University of Bern, Center for Space and Habitability, Gesellschaftsstrasse 6, CH-3012, Bern, Switzerland; joao.mendonca@space.dtu.dk, matej.malik@csh.unibe.ch, brice.demory@csh.unibe.ch, kevin.heng@csh.unibe.ch

Received 2017 July 20; revised 2018 February 5; accepted 2018 February 8; published 2018 March 13

Abstract

Recently acquired *Hubble* and *Spitzer* phase curves of the short-period hot Jupiter WASP-43b make it an ideal target for confronting theory with data. On the observational front, we re-analyze the 3.6 and 4.5 μm *Spitzer* phase curves and demonstrate that our improved analysis better removes residual red noise due to intra-pixel sensitivity, which leads to greater fluxes emanating from the nightside of WASP-43b, thus reducing the tension between theory and data. On the theoretical front, we construct cloud-free and cloudy atmospheres of WASP-43b using our Global Circulation Model (GCM), THOR, which solves the non-hydrostatic Euler equations (compared to GCMs that typically solve the hydrostatic primitive equations). The cloud-free atmosphere produces a reasonable fit to the dayside emission spectrum. The multi-phase emission spectra constrain the cloud deck to be confined to the nightside and have a finite cloud-top pressure. The multi-wavelength phase curves are naturally consistent with our cloudy atmospheres, except for the 4.5 μm phase curve, which requires the presence of enhanced carbon dioxide in the atmosphere of WASP-43b. Multi-phase emission spectra at higher spectral resolution, as may be obtained using the *James Webb Space Telescope*, and a reflected-light phase curve at visible wavelengths would further constrain the properties of clouds in WASP-43b.

Key words: planets and satellites: atmospheres

1. Introduction

1.1. Background

The hot Jupiter WASP-43b, which is about twice as massive and the same radius as Jupiter, orbits its K7 star in just 19.2 hours (Gillon et al. 2012), making it a prime target for phase-curve observations using the *Hubble Space Telescope* (*HST*; Stevenson et al. 2014). These multi-wavelength phase curves probe WASP-43b across longitude and depth (or pressure), providing a two-dimensional view of its atmosphere. Other inferred properties of WASP-43b's atmosphere include a low dayside–nightside energy redistribution efficiency, the lack of a temperature inversion on its dayside and constraints on its water abundance (Gillon et al. 2012; Wang et al. 2013; Blecic et al. 2014; Kreidberg et al. 2014; Stevenson et al. 2014).

1.2. Observational Motivation

To add to the set of near-infrared phase curves published by Stevenson et al. (2014), two 3.6 and one 4.5 μm *Spitzer* phase curves were recently published by Stevenson et al. (2017). The authors report large differences between the two 3.6 μm phase-curve amplitudes and a deep signal (200–300 ppm) present in the second phase curve at orbital phase ~ 0.6 that they choose to dismiss. Stevenson et al. (2017) further state that instrumental systematics affected the first 3.6 μm phase-curve and thus requested re-observations in the same channel. Because of the long-duration of these observations, the visits were split into three (for the first phase curve) and two (for the second one) Astronomical Observation Requests (AOR), which were not adjacent in time. Stevenson et al. (2017) state that the origin of the increased correlated noise was due to the fact that the star landed on different areas of the pixel for each AOR,

enhancing the impact of the well-documented intra-pixel sensitivity (e.g., Ingalls et al. 2012) on the photometry. These facts motivated us to perform our own, independent analysis of the *Spitzer* data.

Thus, part of the present study is devoted to presenting a new re-analysis of the *Spitzer* phase curves of WASP-43b.

1.3. Theoretical Motivation

The near-infrared phase curves of Stevenson et al. (2014) were analyzed by Kataria et al. (2015), who used the GCM described in Showman et al. (2009) to compute three-dimensional (3D) profiles of temperature and velocity, as well as multi-wavelength phase curves and emission spectra at different orbital phases. The Showman et al. (2009) computational setup uses the MITgcm combined with two-stream radiative transfer and k-distribution opacities under the correlated-k approximation. The computed dayside emission spectrum of Kataria et al. (2015) produces a reasonable fit to the measured dayside emission spectrum of Stevenson et al. (2014), but over- or under-predicts the fluxes at other orbital phases. Specifically, the model nightside emission spectrum is too bright compared to the measured one. Clouds were mentioned as a possibility for reconciling models with data (Kataria et al. 2015; Stevenson et al. 2017) but their impact on the atmospheric structure and observable spectra was not explored further. Together with the availability of additional data from Stevenson et al. (2017), these facts motivate a revisiting of, and second opinion on, the GCM work associated with WASP-43b.

It has been previously demonstrated that GCM outputs on hot Jupiters (velocity, temperature, and hence fluxes) are uncertain by several tens of percent (Heng et al. 2011b). This

uncertainty arises from a tension between the need for computational feasibility and the desire for physical accuracy. GCMs are very sensitive to choices of grid, computational methods (Polichtchouk et al. 2014) and how, for example, turbulence and eddy viscosity are represented at the subgrid scales (Heng et al. 2011b). These difficulties imply that it is good scientific practice for the same exoplanet to be simulated by more than one group using different GCMs with different algorithms, choice of grid, etc. (Heng & Showman 2015). To this end, we propose to use our recently constructed GCM, THOR⁴ (Mendonça et al. 2016), to simulate the atmosphere of WASP-43b and confront our simulated output with the data from both Stevenson et al. (2014, 2017).

Besides providing the exoplanet community with a second opinion on the GCM of WASP-43b, we also include a simple parameterization of clouds in our THOR GCMs to explore the influence of clouds on the phase curves and emission spectra. Like all other GCM studies, we will make specific choices for simplicity versus sophistication, which will contribute to a published hierarchy of GCMs on WASP-43b that is necessary for achieving understanding of physical processes. The details of our computational setup are described in Section 3.

Thus, the other part of the present study is devoted to presenting new simulations of WASP-43b’s atmosphere using a new GCM that has never been used to simulate this hot Jupiter. While Kataria et al. (2015) focused mainly on comparing the outcomes of GCMs with $1\times$ and $5\times$ solar composition, we choose to focus on exploring if the properties of a cloud deck and the presence of enhanced carbon dioxide levels may be constrained by the data. Thus, the two studies are complementary in their exploration of the physics.

1.4. Structure of the Present Study

Section 2 is devoted to providing the details of our re-analysis of the Stevenson et al. (2017) *Spitzer* data, and our justification for why the *HST* data of Stevenson et al. (2014) does not require re-analysis. Section 3 contains a detailed description of our THOR GCM and a comparison of it to other GCMs. Our results are presented in Section 4, including multi-faceted comparisons of models with data. Our conclusions, as well as prospects for future work, are described in Section 5.

2. *Spitzer* Data Reduction and Analysis

2.1. Re-analysis of *Spitzer* Phase-curve Data

In this section, we justify our re-analysis of the Stevenson et al. (2017) $3.6\ \mu\text{m}$ phase curves by using a modified version of the BLISS mapping (BM) technique that was used by these authors to mitigate the correlated noise associated with intra-pixel sensitivity. In our photometric baseline model, we complement the BM algorithm with a linear function of the Point Response Function (PRF) Full Width at Half-Maximum (FWHM). We find this addition to yield a dramatic improvement on the photometric residuals (Figure 1, bottom panels). Next, we explain in greater detail the procedure we follow.

We downloaded WASP-43b archival IRAC data from the *Spitzer* Heritage Archive (<http://sha.ipac.caltech.edu>). The data consists of one WASP-43b phase curve at $4.5\ \mu\text{m}$ (split

in 3 AOR, PID 10169) and two at $3.6\ \mu\text{m}$ (split in 3 and 2 AOR respectively, PID 11001; Stevenson et al. 2017). The reduction and analysis of these data sets are similar to Demory et al. (2016a). We model the IRAC intra-pixel sensitivity (Ingalls et al. 2016) using a modified implementation of the BILinearly Interpolated Sub-pixel Sensitivity (BLISS) mapping algorithm (Stevenson et al. 2012).

In addition to the BLISS mapping used in Stevenson et al. (2017), our baseline model includes the PRF’s FWHM along the x and y axes, which significantly reduces the level of correlated noise as shown in previous studies (Lanotte et al. 2014; Demory et al. 2016a, 2016b; Gillon et al. 2017). In the following, we compare the two baseline models: one with bliss-mapping (BM) alone and one that combines BM and the PRF-FWHM (BM+FWHM). The reason for the improvement when using the BM+FWHM model is that the PRF shape evolves with time and its properties are not accounted for by the BLISS algorithm alone. The baseline model does not include time-dependent parameters, such as a ramp. It can be seen from Figure 2 that the raw data does not exhibit a ramp-like feature. Our implementation of this baseline model is included in a Markov Chain Monte Carlo framework already presented in the literature (Gillon et al. 2012). We run two chains of 200,000 steps each to determine the phase-curve properties at 3.6 and $4.5\ \mu\text{m}$ based on the entire data set described in the paragraph above (Figure 3).

We compare in Figure 1 our analysis of the first $3.6\ \mu\text{m}$ phase curve to the one of Stevenson et al. (2017). Contrary to this study, we do not detect systematic features connected to the uneven sampling of the target on the detector. An examination of the light-curve residuals reveals nominal contribution from correlated noise. We use a simple baseline model comparison for this phase curve, using the Bayesian Information Criterion (BIC; see Schwarz 1978). We find BIC values of 2626 and 859 with BM alone and BM+FWHM, respectively, which favors the addition of the FWHM parameters in the baseline model for this data set. In comparing both $3.6\ \mu\text{m}$ phase curves, we find amplitudes of 2395 ± 190 and 2719 ± 200 ppm for the two $3.6\ \mu\text{m}$ phase curves, compared to the previously published 2440 ± 230 and 3380 ± 110 ppm values. We do not detect the ~ 300 ppm systematic feature previously reported in the second $3.6\ \mu\text{m}$ phase curve.

From our BM+FWHM baseline model, we compute a photon-limited precision of 535 ppm per 123 s exposure time at $3.6\ \mu\text{m}$. The BM-only baseline model yields a precision of 955 ppm per 123 s exposure time. The corresponding photon-limited precision is 455 ppm per exposure for these data. Our results are typical of IRAC $3.6\ \mu\text{m}$ photometric performance ($\sim 15\%$ above the photon noise limit).

This test demonstrates that the impact of slight non-repeatability in the positioning of the star on the detector can be significantly mitigated with an appropriate baseline model.

We also perform an analysis of the *Spitzer* $4.5\ \mu\text{m}$ data with the same photometric baseline model for which we find a phase-curve amplitude of 3258 ± 250 ppm.

2.2. *HST*-WFC3 Data

Wide Field Camera 3 (WFC3) is known to perform well down to the photon noise limit in spatial scan mode (Deming et al. 2013). We therefore elect to use the published data as is.

⁴ THOR is an open-source software designed to run on Graphics Processing Units (GPUs): <https://github.com/exoclimate/THOR> or <https://bitbucket.org/jmmendonca/thor>.

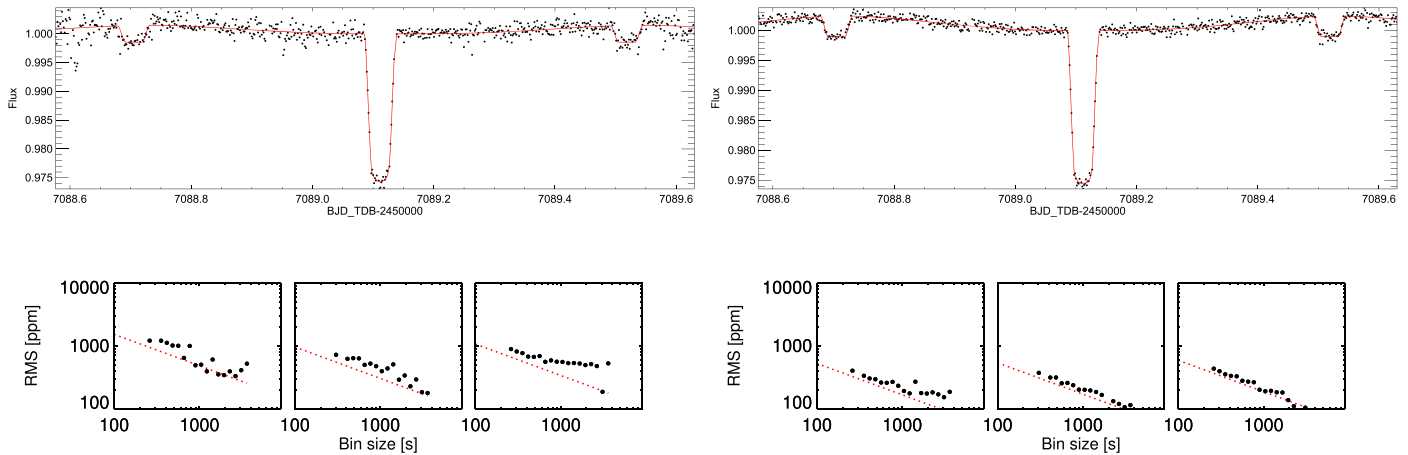


Figure 1. *Spitzer* 3.6 μm phase curves with BLISS mapping only (top-left panel) and additionally with PRF’s FWHM (top-right panel). The photometric residual rms, in parts per million (ppm), is shown in the bottom panels as a function for each AOR. In a purely Poisson-limited regime, we would expect to see the residual noise to decrease with the number of binned points (N) as $1/\sqrt{N}$. Instead, we see non-monotonic behavior with N . With our updated baseline model, we find the residual correlated noise contribution to be nominal.

3. The THOR Global Circulation Model

3.1. Computational Setup in the Context of Previous GCMs

Our THOR GCM was developed, from scratch, to solve the non-hydrostatic Euler equations on an icosahedral grid (Mendonça et al. 2016). THOR has been demonstrated to reproduce the standard benchmark tests for Earth and exoplanet GCMs suggested by Heng et al. (2011b). By comparison, most of the GCMs published in the exoplanet literature solve a reduced set of equations known as the primitive equations of meteorology, which assume hydrostatic equilibrium, a thin atmosphere and neglect radial Coriolis terms (e.g., Mayne et al. 2014 and Heng & Showman 2015 for review papers on common dynamical approximations). Read Mendonça et al. (2016) to learn more about the numerical and physical robustness of THOR. The GCM of Kataria et al. (2015) performs multi-wavelength radiative transfer, but solves the primitive equations. In our GCM, we use a different approach: included a simpler “double-gray” radiative transfer (see Appendix), where radiation is split into the optical/visible (from the star) and infrared (from the exoplanet) wavebands, but solved the non-hydrostatic Euler equations. For each waveband, one needs to specify a mean opacity. The optical/visible and infrared opacities are set to be $0.025 \text{ cm}^2 \text{ g}^{-1}$ and $0.05 \text{ cm}^2 \text{ g}^{-1}$, respectively, which correspond to a photon deposition depth (in the optical/visible) and a photospheric pressure (in the infrared) ~ 100 mbar consistent with the one obtained in Stevenson et al. (2014). Our simplified scheme is very efficient and similar to the “double-gray” radiative transfer used in Heng et al. (2011a), who showed that the resulting global structure of the hot Jovian atmosphere is qualitatively similar to that obtained by Showman et al. (2009) using multi-wavelength radiative transfer. Our simplified scheme also captures quantitatively the longitudinal temperature distribution from Kataria et al. (2015; compare Figure 7 in Kataria et al. 2015 with our Figure 4), which is important to interpret the observational data along the longitude. However, using our simple radiative transfer, we do not represent scattering or the multiple wavelength optical structure of the atmosphere, which reduces the accuracy of the heating/cooling rates profiles in the atmosphere. This limitation has an important impact mainly in the deep atmosphere (>1 bar) as it is discussed later on the

phase curves around $1 \mu\text{m}$ that are probing the deep levels (read Section 4.4). Changes in chemical abundances across the atmosphere is also neglected in this approach. We are working currently on the development of a flexible multi-wavelength radiative transfer scheme for THOR with the same level of sophistication as in Showman et al. (2009) and Amundsen et al. (2014), which will help us refine the results found in this work.

Following Kataria et al. (2015), we assume WASP-43b to be tidally locked. The input parameters for our GCMs are listed in Table 1, and they largely follow what were assumed by Kataria et al. (2015) in order to facilitate comparison. Each GCM run was started from an isothermal (1400 K) state of rest and integrated for 7500 Earth days, with a timestep of 300 s, until a statistical steady state of the deep atmosphere thermal structure was obtained. This long integration is important to avoid the results being biased toward the set initial conditions. The horizontal resolution used is about 4° on a sphere. The subgrid scale dissipation is represented by a fourth-order hyperdiffusion and a 3D divergence damping (Mendonça et al. 2016) with the same diffusion timescale of 940 s; see Heng et al. (2011b) for a discussion of hyperdiffusion on tidally locked exoplanets. Our model atmospheres consist of 40 discrete layers with pressures ranging from about 100 bar to 0.01 mbar. A convective adjustment scheme is used, which consists of mixing vertically the entropy in the atmosphere when the lapse rate becomes super-adiabatic, while conserving the total enthalpy of the unstable atmospheric column (Manabe et al. 1965; Mendonça et al. 2016). We implement a correction of the cosine of the zenith angle to represent the effective path-length (see Li & Shibata 2006 and Mendonça & Read 2016) that is affected by the spherical geometry of the planet. We include a bond albedo of 0.18 that was estimated in Stevenson et al. (2014). The flux coming from the planet’s interior was calculated ($\approx 50 \text{ kW m}^{-2}$) to represent an equilibrium temperature consistent with the observational data (Stevenson et al. 2014 and our new *Spitzer* re-analysis).

3.2. Treatment of Clouds in GCMs

Cloud distribution and composition in hot Jupiters continue to be an active topic of exploration. Using the MITgcm, Parmentier et al. (2016) modeled purely absorbing aerosols with tracers that included a treatment of their size-dependent

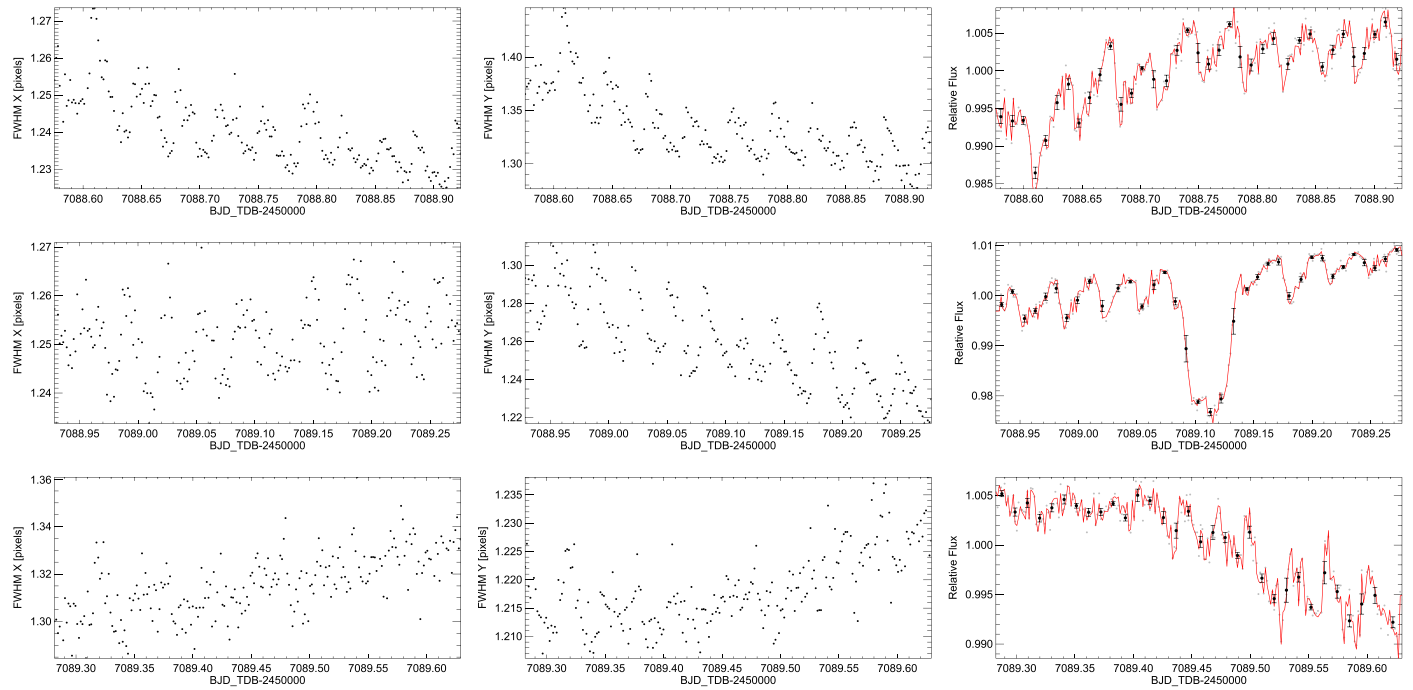


Figure 2. Left and middle panels: PRF-FWHM; Right panels: raw flux data with the model superimposed for the three AORs of the first $3.6 \mu\text{m}$ phase curve.

terminal velocity. Using the FMS GCM, Oreshenko et al. (2016) generalized two-stream radiative transfer to include scattering and overlaid condensation curves on the simulated 3D temperature profile to approximate the spatial distribution of aerosols. In Lee et al. (2016), the first steps toward self-consistent simulations of clouds, radiation and 3D atmospheric circulation on hot Jupiters are described. This type of simulation will be important to help us improve our understanding on the atmospheric processes associated with cloud formation and transport in hot Jupiter planets.

In the current study, we make the simplest assumption and include clouds in our WASP-43b GCMs in the form of a constant, additional opacity covering the nightside of the planet. The physical assumptions behind such an approximation are that the cloud particles are large compared to the wavelengths of thermal emission and that the timescale for them to condense out of the atmospheric gas is short compared to any dynamical or radiative timescales. Using this approach, we also avoid choosing a cloud composition and particle size, which continue to be poorly known (e.g., Parmentier et al. 2016). A reflected-light phase curve in the visible may help us in the future to constrain the composition, particle distribution, and spatial distribution of the clouds (see Marley et al. 2013 for a review on exoplanet clouds). A similar treatment of clouds is used in Dobbs-Dixon & Agol (2013), however, in our case, we set constraints on the cloud spatial distribution. The vertical cloud distribution is very sensitive to local temperature and vertical mixing (Lee et al. 2015). We simplify the unconstrained vertical distribution by assuming that the cloud extends from 100 mbar to 1 bar and for its opacity to decay linearly with pressure above 100 mbar: $k_{\text{cloud}} = p \times 5 \times 10^{-4} \text{ cm}^2 \text{ g}^{-1}$, where p is the pressure in mbar. The decrease of the absorption with altitude is a crude representation of the decrease of cloud density with altitude due to the settlement of the large cloud particles toward higher pressures. The model produces very similar results to those adopting a well mixed cloud structure, e.g., Parmentier et al. (2016). Above 1 mbar, the cloud opacity is set to zero. A

very high cloud top would be inconsistent with recent transmission spectroscopy results (e.g., Kreidberg et al. 2014), and, would replace the still detected water absorption feature from the nightside emission with a continuum emission. Our cloud structure blocks the radiation coming from the deepest layers and raises the photosphere in the nightside to roughly 10 mbar (defined here as the cloud top level). We would like to highlight the possibility of other cloud solutions to represent the cloud cover in WASP-43b, but since the observational data is still very crude to constrain the cloud properties we keep this setting as simple as possible. The cloud cover is located on the nightside of the planet, with no interaction with the stellar light. The clouds are positioned where $\cos \theta_z$ is negative and its density weighted by $|\cos \theta_z|^{0.2}$, where θ_z is the zenith angle, to avoid undesired sharp transitions in the thermal structure during the GCM simulations. Note that the use of this weighting function does not produce noticeable differences in the post-processing results explored later. We further explore the effects of shifting the cloud westward by 20° , where the weighting function is then defined as $|\cos(\lambda + 20^\circ)\cos \phi|^{0.2}$ with λ being the longitude and ϕ the latitude. In this case, the stellar light interacts with the cloud cover for zenith angles higher than 80° but it does not significantly affect the atmospheric thermal structure as it is pointed out in the analysis of the phase curves later in Section 4.3.

3.3. Computing Observables

Upon obtaining the 3D structure of temperature and pressure, we post-process this output to obtain multi-phase synthetic spectra and multi-wavelength phase curves. The spectra are generated combining the radiative emission solution from Heng et al. (2014) and Malik et al. (2017) with the multiple-scattering solution to treat the stellar radiation from Mendonça et al. (2015). For these results we include the main absorbers in the infrared from two databases: HITEMP (Rothman et al. 2010) for H_2O , CO_2 and CO ; HITRAN

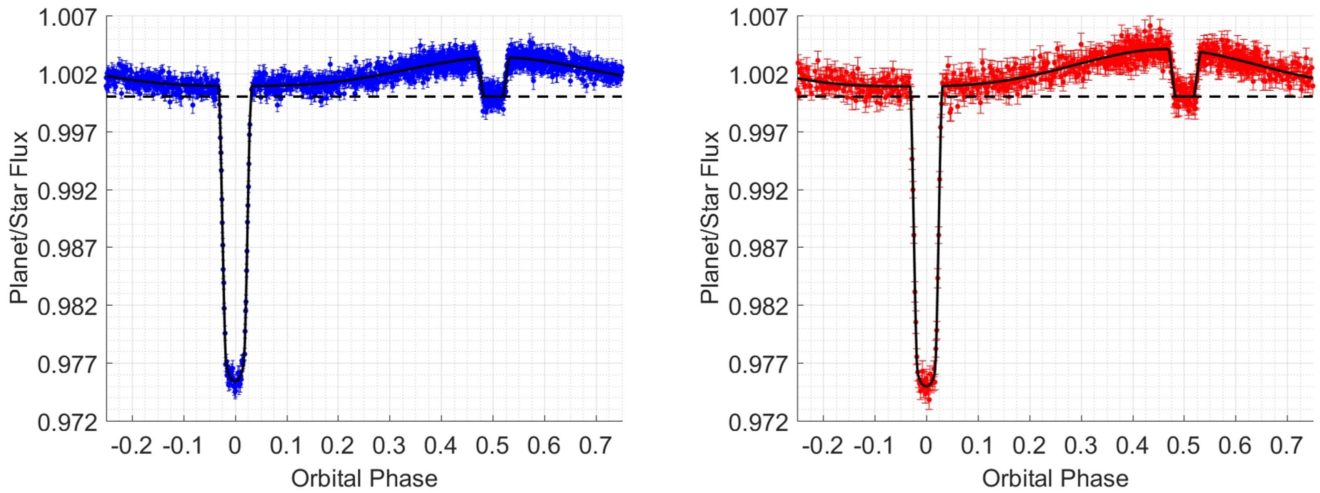


Figure 3. Combined spectroscopic phase curves of WASP-43b at $3.6 \mu\text{m}$ (left panel) and $4.5 \mu\text{m}$ (right panel). The solid line indicates the best-fit model to the observational data points. The values were normalized with respect to the stellar flux estimated during the secondary eclipse (orbital phase equal to 0.5).

(Rothman et al. 2013) for CH_4 , NH_3 , HCN , C_2H_2 and the collision-induced absorption from $\text{H}_2\text{--H}_2$ and $\text{H}_2\text{--He}$ (Richard et al. 2012). We have also included Rayleigh scattering by hydrogen molecules. The projected outgoing intensity at the top of the atmosphere is calculated for each geographical location of the observed hemisphere that moves with the orbital phase. The spectral resolution used was 3000 spectral bins covering a spectral range from $0.3 \mu\text{m}$ to 10cm . The abundances in the atmosphere of WASP-43b are assumed to be in chemical equilibrium and were computed using FastChem (J. Stock et al. 2018, in preparation). The stellar flux was interpolated from the PHOENIX model database (Allard & Hauschildt 1995; Husser et al. 2013). The post-processing tools take also into account the same 3D cloud structures with gray opacity as used in the GCM simulations to maintain consistency in the interpretation of the results.

4. Results

4.1. Reference Simulations

We present two GCM runs in Figure 4, where the top and bottom rows show the cloud-free and cloudy GCMs, respectively. The output from these GCMs will be post-processed to produce multi-phase emission spectra and multi-wavelength phase curves, which we will discuss shortly. Here, we point out the lessons learned from comparing the cloud-free and cloudy GCMs. First, both GCMs show the presence of an equatorial zonal jet, which is ubiquitous in all current GCMs of hot Jupiters (see Heng & Showman 2015 for a review). The main mechanism driving the formation of the equatorial jet is the equator-ward transport of angular momentum (i.e., an upgradient transport of angular momentum) caused by a tilt of the diurnal tide phase front with respect to the latitude, in the latitude-longitude plane (e.g., Showman & Polvani 2011; Tsai et al. 2014). The presence of clouds on the nightside weakens the equatorial zonal jet in our simulations, as the mechanism responsible for the transport of angular momentum toward the equator is partially disrupted. The zonally averaged mass stream function profiles for both GCMs reveal the presence of anti-Hadley circulation cells, which transport mass and heat downwards (to greater pressures) at the equator. Second, the presence of nightside clouds results in a greater temperature

contrast between the dayside and nightside of WASP-43b. Corresponding, the shift of the peak of the thermal phase curves, which track the temperature profile across longitude, is reduced by the presence of clouds. Third, the chevron feature at 10 mbar is robust to the presence of clouds, but is altered somewhat by the cloud-driven change in the atmospheric circulation. Of interest are the large-scale vortices at mid-latitudes, which are the coldest regions of the atmosphere at 10 mbar. These cold regions can be associated with regions that can trap and grow larger cloud particles (see for example Lee et al. 2016). Overall, we expect the influence of the clouds on the variation of temperature across altitude, latitude and longitude to be manifested in the emission spectra and phase curves, which we will now explore.

4.2. Different Physical Scenarios Explored

To understand the influence of clouds in the atmosphere of WASP-43b, we explore the following idealized scenarios.

1. A cloud-free atmosphere, shown by the black curves in both Figures 5 and 6. This experiment is consistent with the work from Kataria et al. (2015).
2. A cloudy atmosphere with a cloud deck on the nightside extending to a cloud-top pressure of 10 mbar (cyan curves). This mimics a cloud deck forming due to the cooler temperatures of the nightside as suggested by Kataria et al. (2015).
3. A cloudy atmosphere with a nightside cloud deck and enhanced carbon dioxide (CO_2) (magenta curves). The consideration of CO_2 is motivated by its ability to absorb radiation at $4.5 \mu\text{m}$ relative to other molecules. To mimic its change in abundance from the dayside to the nightside of WASP-43b, we assume additional CO_2 to be absent at the substellar point (noon) and increase to a mass mixing ratio of 10^{-3} at the antistellar point. We emphasize that this is in addition to CO_2 that is assumed to be present according to chemical equilibrium and local conditions of temperature and pressure. This scenario represents a similar chemical disequilibrium process driven by the atmospheric transport as suggested by Cooper & Showman (2005) and Agúndez et al. (2014).

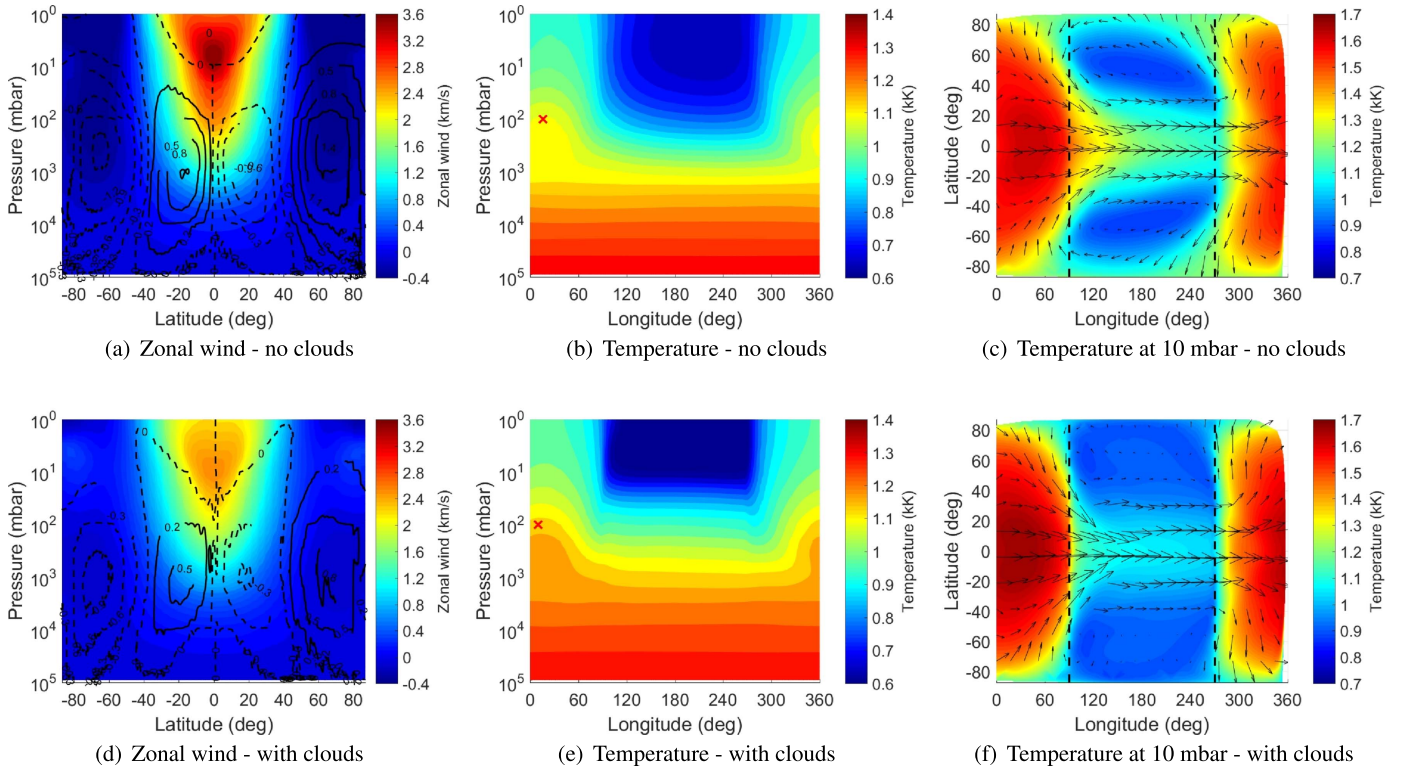


Figure 4. (a) and (d) are the zonal and time averaged zonal winds for the simulations with and without opaque clouds in the nightside of the planet, respectively. The lines are contours of the averaged mass-stream function (in units of $10^{13} \text{ kg s}^{-1}$). The dashed lines represent the anti-clockwise circulation and the solid lines the clockwise. (b) and (e) are the maps of temperature averaged in time and latitude. The latitudinal averaging was weighted by the cosine of latitude. (c) and (f) are horizontal maps of temperature at 10 mbar. The arrows shows the time averaged direction of the wind speed. All the results shown in this figure were averaged over the last 500 Earth days of the long simulation. The long-time averaging ensures that the atmospheric structures shown in these plots are not transient features, since the radiative timescales below the pressure level 1 bar are of the order of hundreds of days (Iro et al. 2005). The red crosses in (b) and (e) mark the temperature peaks at 100 mbar and the vertical dashed lines in (c) and (f) the terminators of the planet.

Table 1

Input Parameters Used in the Reference GCM Simulations of WASP-43b		
Parameters	Value Adopted	Units
Star Temperature	4520	K
Planet distance	0.015	au
Mean Radius	72427	km
Gravity	47.0	m s^{-2}
Gas constant	3714	$\text{J K}^{-1} \text{ kg}^{-1}$
Specific heat	13000	$\text{J K}^{-1} \text{ kg}^{-1}$
Bond albedo	0.18	...
Highest pressure	≈ 100	bar
Interior flux	≈ 50	kW s^{-2}
Rotation rate	9.09×10^{-5}	s^{-1}
Orbit inclination	0	deg
Orbit eccentricity	0	deg

4. A cloudy atmosphere with the cloud deck shifted westwards in longitude by 20° (yellow curves). Physically, it mimics the protrusion of the cloud deck from the nightside into the dayside caused by atmospheric circulation and the presence of the cold vortices at

mid-latitude. This experiment could represent a scenario similar to Kepler-7b (Demory et al. 2013).

5. A cloudy atmosphere with the cloud top located at 20 mbar instead of 10 mbar (green curves). This mimics variation in the microphysical cloud processes and atmospheric mixing that we are not modeling from first principles (e.g., Parmentier et al. 2016).

4.3. Constraints from Multi-phase Emission Spectra

Figure 5 shows the multi-phase emission spectra corresponding to the suite of models described in Section 4.2, as well as the *Spitzer* data points from both Stevenson et al. (2017) and our re-analysis of the same data. The first thing to notice is how our re-analysis of the *Spitzer* data has little effect on the dayside emission spectrum, as well as the spectra just before and after the dayside. However, it has a significant effect on the emission spectra at orbital phases just before and after that of the nightside. Specifically, the nightside of WASP-43b is now emitting more flux.

Consistent with Kataria et al. (2015), our cloud-free GCM produces a decent match to the dayside emission spectrum of WASP-43b, as do the GCMs with nightside clouds. We lay claim to the same statement made by Kataria et al. (2015), which is that this agreement between model and data is accomplished with little to no finetuning.

The nightside emission spectra (orbital phases of 0.125 and 0.875), as well as those at orbital phases of 0.1875, 0.3125 and 0.75, are inconsistent with the predictions from our cloud-free

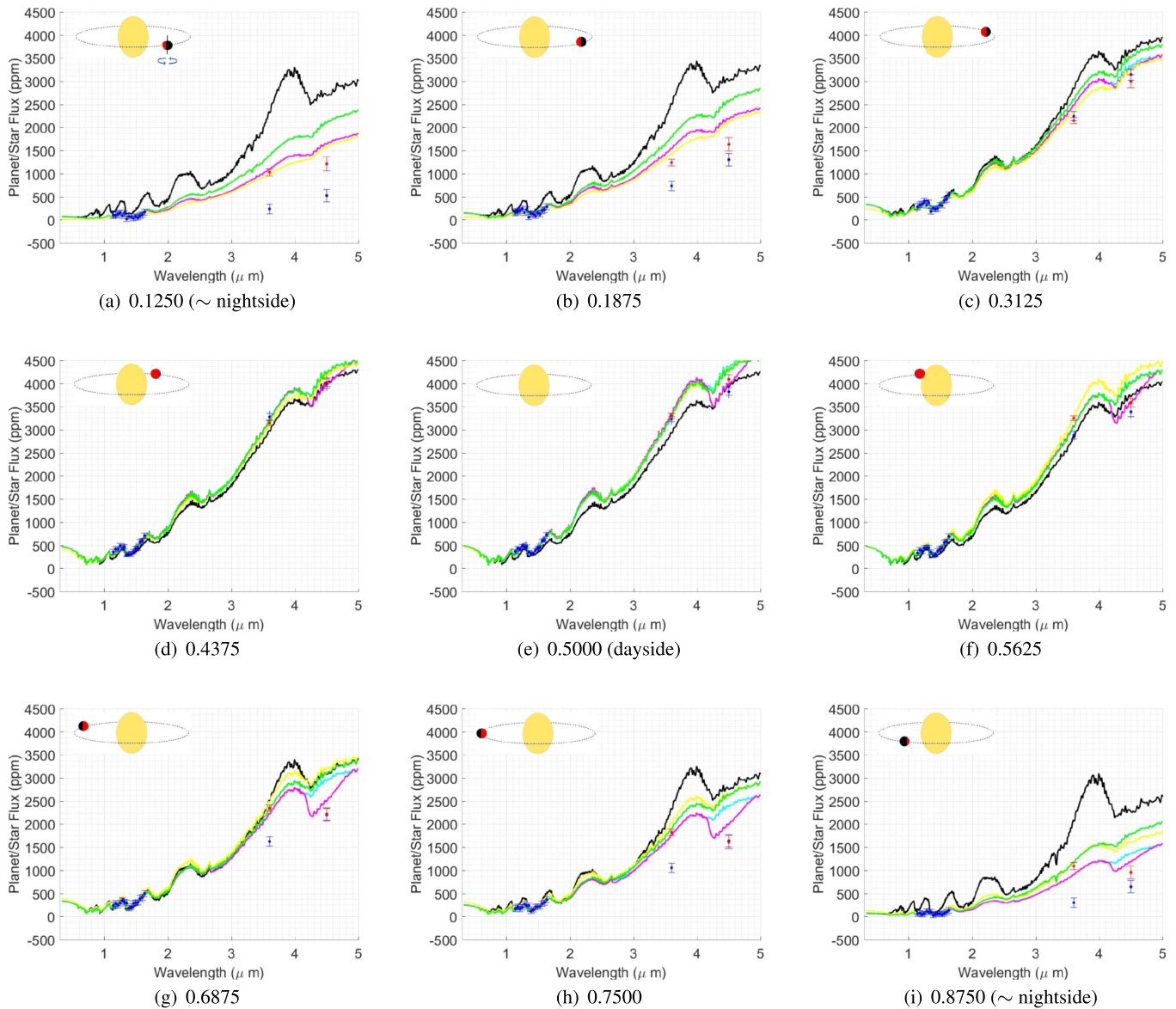


Figure 5. Emission spectra at different orbital phases (panels (a) to (i)). The primary transit occurs at orbital phase 0.0 and the secondary eclipse at 0.5 (panel (e)). The blue points are *WFC3* data from Stevenson et al. (2014) and *Spitzer* data from Stevenson et al. (2017). The red points are from our re-analysis of the *Spitzer* data. The different solid lines correspond to atmospheric scenarios: black—without clouds; cyan—with clouds; magenta—with clouds and extra CO_2 ; yellow—clouds in the nightside shifted 20° westwards; green—clouds with lower cloud top level (20 mbar instead of 10 mbar).

GCM, which over-predict both the *WFC3* and *Spitzer* fluxes. Our re-analysis of the *Spitzer* data points brings them into closer agreement with the models, but it is clear that a cloudy nightside is needed to match the data. Additionally, the emission spectra at orbital phases of 0.125 and 0.1875 disfavor the scenario in which the cloud top is located at 20 mbar, which produce model 3.6 and $4.5 \mu\text{m}$ fluxes that are higher than the measured fluxes.

At orbital phases of 0.6875, 0.75 and 0.875, the $4.5 \mu\text{m}$ *Spitzer* flux is lower than predicted by the cloudy models, unless enhanced CO_2 is present in the atmosphere. CO has also an important absorption feature at this wavelength, however, tests assuming an atmosphere composed of 100% CO could not reduce the fluxes down to the values observed. However, CO will contribute to reduce the fluxes at $4.5 \mu\text{m}$ at larger orbital phases, because it is expected that its abundance is enhanced relative to its chemical equilibrium values in the nightside

due to the efficient transport from the dayside (e.g., Cooper & Showman 2005; Agúndez et al. 2014). Future simulations capable of computing self-consistently chemistry, radiation and atmospheric dynamics, will be able to elucidate the nature of this atmospheric process. There appears to be no evidence in favor of a cloud deck that is shifted westwards in longitude.

4.4. Constraints from Multi-wavelength Phase Curve

The simulated and measured multi-wavelength phase curves in Figure 6 emphasize different properties. First, none of the simulated phase curves from the cloud-free GCM match the data. The simulated phase curves are somewhat flat at *WFC3* wavelengths, but this is a consequence of the mean opacities we have chosen, which render the dayside–nightside contrast at ≥ 1 bar to be low. Physically, starlight has been mostly attenuated by these pressures. At these depths in our GCMs, the zonal winds effectively establish near-uniformity in temperature across longitude. By contrast, the

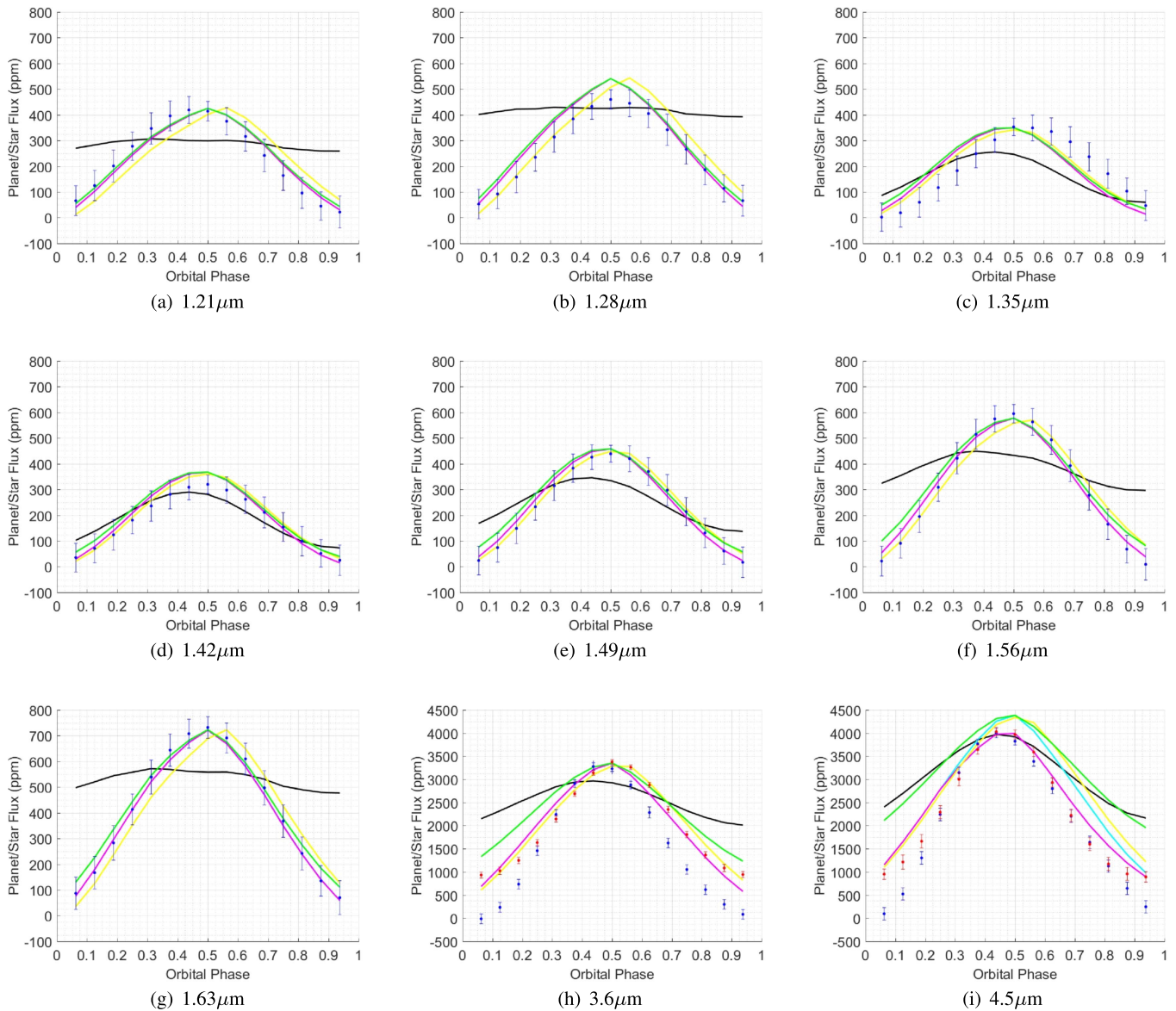


Figure 6. Phase curves for different wavelengths (panels (a) to (i)). The planet transit happens at orbital phase 0.0 and the secondary eclipse at 0.5. The blue points are *WFC3* data from Stevenson et al. (2014) and *Spitzer* data from Stevenson et al. (2017). The red points are from our re-analysis of the *Spitzer* data. The colors of the curves represent the same atmospheric scenarios as in Figure 5.

different treatment of opacities by Kataria et al. (2015) results in a different thermal structure in the deep atmosphere, which leads to different predictions for the cloud-free phase curves. At all wavelengths except 4.5 μm , the various cloudy models match the data well. At 3.6 μm , our re-analyzed phase curve is more naturally in agreement with the models. At 4.5 μm , the model with enhanced CO_2 is favored.

5. Conclusions and Future Prospects

We have revisited the phase curves of WASP-43b—both observationally and theoretically. Our re-analysis of the *Spitzer* data results in higher fluxes emanating from the nightside of WASP-43b, which brings the nightside spectrum into closer agreement with GCM predictions. Confronting our GCM predictions with data leads us to conclude that clouds on the nightside of WASP-43b are necessary, and that constraints on the cloud-top pressure and longitudinal position of the cloud deck are

obtained. There is a hint that enhanced CO_2 abundances are present at and near the nightside of WASP-43b.

A lesson learned is that multi-phase emission spectra and multi-wavelength phase curves constrain different properties of the atmosphere. The former are useful for constraining cloud properties, while the latter tell us if clouds are needed at all. Phase curves at specific wavelengths inform us if specific molecules are present at enhanced abundances—in our case, CO_2 at 4.5 μm .

There are ample prospects for future work. THOR may be upgraded to fully and self-consistently incorporate multi-wavelength radiative transfer, without the need for post-processing. With the *James Webb Space Telescope* due to launch in 2019, multi-phase emission spectra at higher spectral resolution may be obtained. A visible, reflected-light phase curve of WASP-43b would be especially constraining, as it would directly constrain the longitudinal distribution of clouds. In this regard, a resounding example has already been provided by Kepler-7b (Demory et al. 2013).

J.M.M., M.M., B.-O.D., and K.H. thank the Center for Space and Habitability (CSH), Swiss National Science Foundation, Swiss-based MERAC Foundation and the Space Research and Planetary Sciences Division (WP) of the University of Bern for financial, secretarial and logistical support. B.-O.D. acknowledges support from the Swiss National Science Foundation in the form of a Swiss National Science Foundation Professorship (PP00P2-163967). We thank Daniel Kitzmann and Shang-Min Tsai for useful discussions on cloud physics and chemistry. We also thank Sandra Raimundo for instructive conversations.

Appendix “Double-gray” Radiative Transfer

Our simple radiation scheme in the GCM is based on the solution of the radiative transfer equation in parallel-plane layers with no scattering. The method used to represent the incoming stellar radiation solves the Lambert law equation:

$$F_{sw}^{\downarrow} = (1 - A)F_{*} \exp\left(-\frac{\tau_{\text{stellar}}}{\mu_{z\text{th}}}\right), \quad (1)$$

where F_{sw}^{\downarrow} is the incoming downward stellar flux, A is the planet bond albedo, F_{*} is the stellar constant, $\mu_{z\text{th}}$ is the cosine of the zenith angle, and τ_{stellar} is the optical depth for the stellar light. We include an extra layer above the model’s domain to avoid overheating in the uppermost layer during the numerical simulations.

The zenith angle is the angle between the zenith point and the center of the star’s disk, and the amount of incoming stellar flux at the top of the model’s domain is weighted by the cosine of the zenith angle. The positive values of the cosine are related to the dayside of the planet, negative to the nightside and zero indicates the terminator. In our work, we correct the solar path-length to take into account the effect of the atmospheric spherical curvature. The effective solar path-length is calculated defining the cosine of the zenith angle (μ) as (Li & Shibata 2006):

$$\frac{1}{\mu(z)} = \frac{1}{\sqrt{1 - \left(\frac{R}{R+z}\right)^2 (1 - \mu_0^2)}}. \quad (2)$$

In the equation z represents altitude, R the radius and μ_0 the cosine of the zenith angle without the geometrical correction. In order to simplify this equation, we have neglected the refraction effects.

In the thermal radiation part, we solve for each layer the following thermal emission equation:

$$dE(\mu) = B(\tau') \exp(-\tau'/\mu) \frac{d\tau'}{\mu}. \quad (3)$$

The variable $B(\tau')$ is the spectrally integrated Planck function and μ is the cosine of the emission angle relative to the normal of the layer basis. μ is always define positive where layer basis is relative to the direction of radiation. Inside the model layers, we assume that the source function varies linearly with optical depth. The notation used here is the same as in Mendonça et al. (2015):

$$B(\tau') = B(T_T) + \frac{\tau'}{\tau} [B(T_B) - B(T_T)]. \quad (4)$$

$B(T_T)$ and $B(T_B)$ are the Planck functions for temperatures at the top and the bottom of the atmospheric layers respectively, and τ is the total optical depth of the layer. The integrated flux from the Planck function is calculated using the Stefan–Boltzmann equation.

Upon integrating Equation (3) for the entire layer, we can obtain two solutions for the emitted thermal radiation: upward and downward directions. The solution in the upward direction is:

$$E(\mu) = B(T_T) - B(T_B) + [B(T_B) + \frac{\mu}{\tau} [B(T_B) - B(T_T)] \left(1 - \exp\left(-\frac{\tau}{\mu}\right)\right)]. \quad (5)$$

The downward solution is represented by:

$$E^*(\mu) = B(T_B) - B(T_T) + [B(T_B) - \frac{\mu}{\tau} [B(T_B) - B(T_T)] \left(1 - \exp\left(-\frac{\tau}{\mu}\right)\right)]. \quad (6)$$

As pointed out in Lacis & Oinas (1991) the two solutions above have to be fixed for the case of small optical depths due to the singularity in the equations. It is suggested in Lacis & Oinas (1991) that in the case for small optical depths these two equations can be replaced by:

$$E(\mu) = \sum_{n=1}^{n_f} (-1)^{n+1} \frac{B(T_T) + nB(T_B)}{(n+1)!} \left(\frac{\tau}{\mu}\right)^n \quad (7)$$

for the upward direction and in the opposite direction:

$$E^*(\mu) = \sum_{n=1}^{n_f} (-1)^{n+1} \frac{B(T_B) + nB(T_T)}{(n+1)!} \left(\frac{\tau}{\mu}\right)^n. \quad (8)$$

In our model, we set n_f to be equal to five.

The solutions for each layer are then combined in a stacked layer atmosphere configuration. The net upward thermal intensities are calculated from:

$$\begin{aligned} U_0(\mu) &= B(T_{\text{int}}) \\ U_1(\mu) &= E_1(\mu) + U_0(\mu) \exp(-\tau_1/\mu) \\ &\dots \\ U_n(\mu) &= E_n(\mu) + U_{n-1}(\mu) \exp(-\tau_n/\mu) \end{aligned} \quad (9)$$

where $B(T_{\text{int}})$ represents the flux coming from the planet’s interior and the indices n are the layers interfaces’ indices (0 represents the lowest model interface and N the top of the model domain). The downward component is calculated from:

$$\begin{aligned} D_N(\mu) &= 0 \\ D_{N-1}(\mu) &= E_N^*(\mu) + D_N(\mu) \exp(-\tau_N/\mu) \\ &\dots \\ D_n(\mu) &= E_{n+1}^*(\mu) + D_{n+1}(\mu) \exp(-\tau_{n+1}/\mu). \end{aligned} \quad (10)$$

At the top, we assume that the downward flux is zero. The net fluxes are obtained integrating the equations over μ . In our scheme, the angular integration is calculated using a three-point Gaussian quadrature. Using this integration, we have a simple and accurate method to estimate the angular integration and it is more flexible than other approximate techniques such as the diffusivity factor.

In order to improve the accuracy of the thermal source functions of each layer, we divided the model layers into two

equally optically thick parts and computed the intensities separately (Mendonça et al. 2015 and Malik et al. 2017). This method improves the accuracy in the thermal emission calculation in the middle of the layers and avoids the formation of local spurious peaks in the temperature profile. The solar and thermal heating/cooling rates ($\frac{dT}{dt}$) are calculated from the total flux difference across each layer:

$$\frac{dT}{dt} = \frac{1}{\rho C_p} \frac{dF^{\text{net}}}{dz}. \quad (11)$$

In this equation, ρ is the atmospheric density, C_p is the specific heat capacity at constant pressure, and F^{net} is the spectral-integrated net radiative flux.

ORCID iDs

João M. Mendonça  <https://orcid.org/0000-0002-6907-4476>

Matej Malik  <https://orcid.org/0000-0002-2110-6694>

Brice-Olivier Demory  <https://orcid.org/0000-0002-9355-5165>

Kevin Heng  <https://orcid.org/0000-0003-1907-5910>

References

- Agúndez, M., Parmentier, V., Venot, O., Hersant, F., & Selsis, F. 2014, *A&A*, **564**, A73
- Allard, F., & Hauschildt, P. H. 1995, *ApJ*, **445**, 433
- Amundsen, D. S., Baraffe, I., Tremblin, P., et al. 2014, *A&A*, **564**, A59
- Blecic, J., Harrington, J., Madhusudhan, N., et al. 2014, *ApJ*, **781**, 116
- Cooper, C. S., & Showman, A. P. 2005, *ApJL*, **629**, L45
- Deming, D., Wilkins, A., McCullough, P., et al. 2013, *ApJ*, **774**, 95
- Demory, B.-O., de Wit, J., Lewis, N., et al. 2013, *ApJL*, **776**, L25
- Demory, B.-O., Gillon, M., de Wit, J., et al. 2016a, *Natur*, **532**, 207
- Demory, B.-O., Gillon, M., Madhusudhan, N., & Queloz, D. 2016b, *MNRAS*, **455**, 2018
- Dobbs-Dixon, I., & Agol, E. 2013, *MNRAS*, **435**, 3159
- Gillon, M., Demory, B.-O., Lovis, C., et al. 2017, *A&A*, **601**, A117
- Gillon, M., Triaud, A. H. M. J., Fortney, J. J., et al. 2012, *A&A*, **542**, A4
- Heng, K., Frierson, D. M. W., & Phillipps, P. J. 2011a, *MNRAS*, **418**, 2669
- Heng, K., Mendonça, J. M., & Lee, J.-M. 2014, *ApJS*, **215**, 4
- Heng, K., Menou, K., & Phillipps, P. J. 2011b, *MNRAS*, **413**, 2380
- Heng, K., & Showman, A. P. 2015, *AREPS*, **43**, 509
- Husser, T.-O., Wende-von Berg, S., Dreizler, S., et al. 2013, *A&A*, **553**, A6
- Ingalls, J. G., Krick, J. E., Carey, S. J., et al. 2012, *Proc. SPIE*, **8442**, 84421Y
- Ingalls, J. G., Krick, J. E., Carey, S. J., et al. 2016, *AJ*, **152**, 44
- Iro, N., Bézard, B., & Guillot, T. 2005, *A&A*, **436**, 719
- Kataria, T., Showman, A. P., Fortney, J. J., et al. 2015, *ApJ*, **801**, 86
- Kreidberg, L., Bean, J. L., Désert, J.-M., et al. 2014, *ApJL*, **793**, L27
- Lacis, A. A., & Oinas, V. 1991, *JGR*, **96**, 9027
- Lanotte, A. A., Gillon, M., Demory, B.-O., et al. 2014, *A&A*, **572**, A73
- Lee, G., Dobbs-Dixon, I., Helling, C., Bognar, K., & Woitke, P. 2016, *A&A*, **594**, A48
- Lee, G., Helling, C., Dobbs-Dixon, I., & Juncher, D. 2015, *A&A*, **580**, A12
- Li, J., & Shibata, K. 2006, *JatS*, **63**, 1365
- Malik, M., Grosheintz, L., Mendonça, J. M., et al. 2017, *AJ*, **153**, 56
- Manabe, S., Smagorinsky, J., & Strickler, R. F. 1965, *MWRv*, **93**, 769
- Marley, M. S., Ackerman, A. S., Cuzzi, J. N., & Kitzmann, D. 2013, in *Comparative Climatology of Terrestrial Planets*, ed. S. J. Mackwell et al. (Tucson, AZ: Univ. Arizona Press), 367
- Mayne, N. J., Baraffe, I., Acreman, D. M., et al. 2014, *A&A*, **561**, A1
- Mendonça, J. M., Grimm, S. L., Grosheintz, L., & Heng, K. 2016, *ApJ*, **829**, 115
- Mendonça, J. M., & Read, P. L. 2016, *P&SS*, **134**, 1
- Mendonça, J. M., Read, P. L., Wilson, C. F., & Lee, C. 2015, *P&SS*, **105**, 80
- Oreshenko, M., Heng, K., & Demory, B.-O. 2016, *MNRAS*, **457**, 3420
- Parmentier, V., Fortney, J. J., Showman, A. P., Morley, C., & Marley, M. S. 2016, *ApJ*, **828**, 22
- Polichtchouk, I., Cho, J. Y.-K., Watkins, C., et al. 2014, *Icar*, **229**, 355
- Richard, C., Gordon, I. E., Rothman, L. S., et al. 2012, *JQSRT*, **113**, 1276
- Rothman, L. S., Gordon, I. E., Babikov, Y., et al. 2013, *JQSRT*, **130**, 4
- Rothman, L. S., Gordon, I. E., Barber, R. J., et al. 2010, *JQSRT*, **111**, 2139
- Schwarz, G. 1978, *AnSta*, **6**, 461
- Showman, A. P., Fortney, J. J., Lian, Y., et al. 2009, *ApJ*, **699**, 564
- Showman, A. P., & Polvani, L. M. 2011, *ApJ*, **738**, 71
- Stevenson, K. B., Désert, J.-M., Line, M. R., et al. 2014, *Sci*, **346**, 838
- Stevenson, K. B., Harrington, J., Fortney, J. J., et al. 2012, *ApJ*, **754**, 136
- Stevenson, K. B., Line, M. R., Bean, J. L., et al. 2017, *AJ*, **153**, 68
- Tsai, S.-M., Dobbs-Dixon, I., & Gu, P.-G. 2014, *ApJ*, **793**, 141
- Wang, W., van Boekel, R., Madhusudhan, N., et al. 2013, *ApJ*, **770**, 70