

Technical University of Denmark



## An automated flow-injection enzyme-linked immunosorbent assay for the detection of Zearalenone

Jantra, Jongjit ; Zor, Kinga; Hedström, Martin ; Mattiasson, Bo

*Publication date:*  
2018

*Document Version*  
Publisher's PDF, also known as Version of record

[Link back to DTU Orbit](#)

*Citation (APA):*  
Jantra, J., Zor, K., Hedström, M., & Mattiasson, B. (2018). An automated flow-injection enzyme-linked immunosorbent assay for the detection of Zearalenone. Abstract from Pure and Applied Chemistry International Conference 2018 , Hat Yai, Thailand.

## DTU Library

Technical Information Center of Denmark

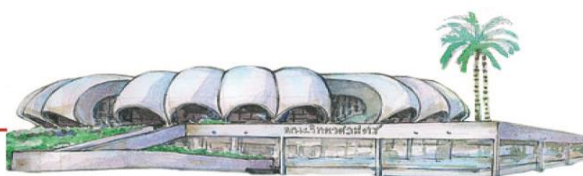
---

### General rights

Copyright and moral rights for the publications made accessible in the public portal are retained by the authors and/or other copyright owners and it is a condition of accessing publications that users recognise and abide by the legal requirements associated with these rights.

- Users may download and print one copy of any publication from the public portal for the purpose of private study or research.
- You may not further distribute the material or use it for any profit-making activity or commercial gain
- You may freely distribute the URL identifying the publication in the public portal

If you believe that this document breaches copyright please contact us providing details, and we will remove access to the work immediately and investigate your claim.



## An automated flow-injection enzyme-linked immunosorbent assay for the detection of Zearalenone

Jongjit Jantra<sup>1,3\*</sup>, Kinga Zór<sup>1,4</sup>, Martin Hedström<sup>1,2</sup>, Bo Mattiasson<sup>1,2\*</sup>

<sup>1</sup>Division of Biotechnology, Lund University, Box 124, SE-22100, Lund, Sweden

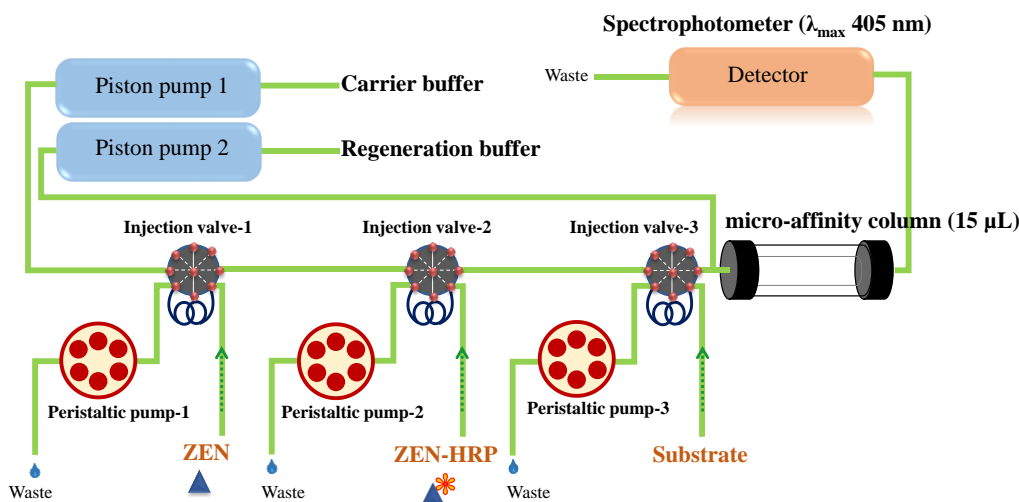
<sup>2</sup>CapSenze Biosystems AB, Scheelevägen 22, SE-22363, Lund, Sweden

<sup>3</sup>King Mongkut's Institute of Technology Ladkrabang, Prince of Chumphon Campus, Pathiu, Chumphon 86160, Thailand

<sup>4</sup>Department of Micro- and Nanotechnology, Technical University of Denmark, 2800 Kgs. Lyngby, Denmark

\*E-mail: jongjit.jan@kmitl.ac.th, bo.mattiasson@biotek.lu.se

**Abstract:** Zearalenone (ZEN) is a mycotoxin produced by several species of *Fusarium* and can be found as contaminant in corn, rice and wheat. Developing an assay for detection of ZEN in these samples is crucial, since it can be used as a warning tool when analyzing agricultural products. In this work, detection of ZEN was carried out with an automated flow enzyme-linked immunosorbent assay. ZEN antibodies were covalently immobilized on Sepharose 4B beads and packed in a micro-affinity column (15  $\mu\text{L}$ ), which was integrated in the flow system. The assay was performed based on the ELISA format by sequential injection of ZEN sample and ZEN-HRP (tracer) to the micro-affinity column. The injected reagents were sequentially bound by the immobilized ZEN antibodies and substrate for the labeling enzyme was introduced. The absorbance of blue-green product caused from enzymatic oxidation of the substrate was measured at 405 nm. The absorbance was inversely proportional to the concentration of ZEN. With this assay we were able to detect ZEN down to 7.5  $\mu\text{g L}^{-1}$ , in only 18 min. The antibody-antigen complex was dissociated using 200 mM glycine-HCl buffer (pH 2.4), to enable reusability of the column. The optimum regeneration time was 520 seconds.



**Keywords:** Zearalenone; Flow-ELISA; Biosensor