

KNY-20-01071

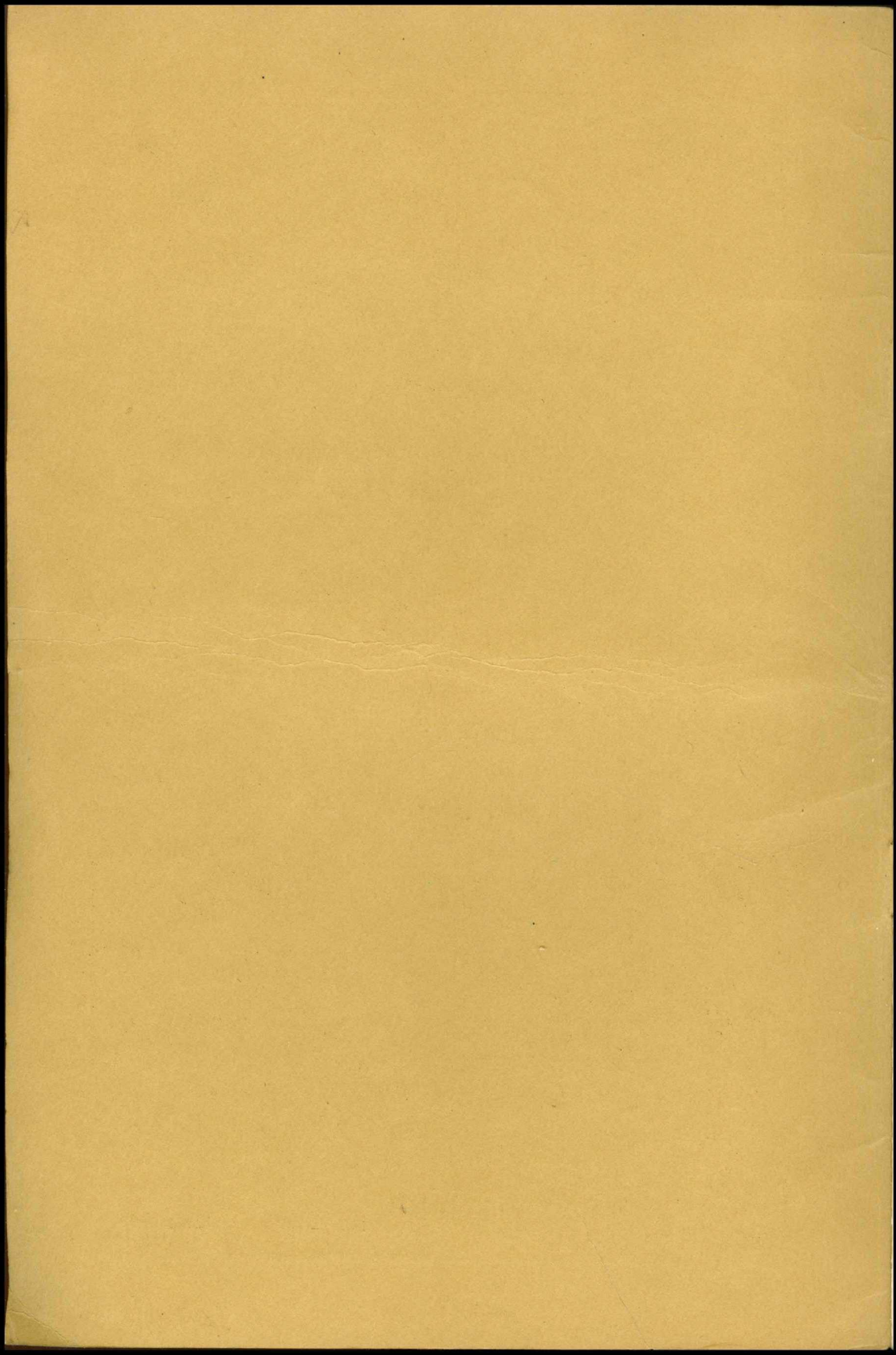
STOA

THE FIRST SITE OF
INTERNATIONAL PROTECTION
REC
JAN 10 1927
ENC.



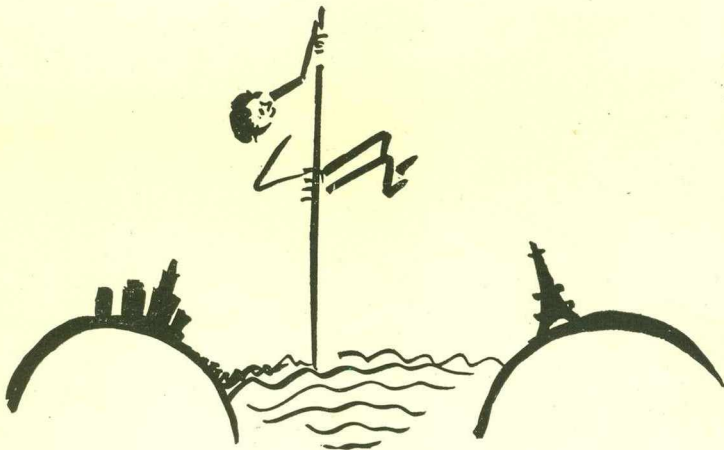
Calder

HOW IN THE WORLD ELSE?



S·T·C·A

Is More Than A Means
of
Crossing the Ocean



Student Third Cabin Association
HOLLAND AMERICA LINE
24 STATE STREET
New York

Endorsements

The Student Third Cabin Association is fortunate in having the following endorsements of its plans:

THE NATIONAL STUDENT FEDERATION OF AMERICA,
Crimson Building, Cleveland, Ohio.

MISS BERNICE BROWN, *Dean*, Radcliffe College.

MR. JOSEPH ALDRICH BURSLEY, *Dean*, University of Michigan.

MR. HARRY A. GARFIELD, *President*, Williams College.

MR. WILLIAM MATHER LEWIS, *President*, George Washington University.

MISS JANE L. MESICK, *Dean*, Simmons College.

MR. WILLIAM ALLAN NEILSON, *President*, Smith College.

MISS EDITH SOUTHER TUFTS, *Dean*, Wellesley College.

MR. ERNEST H. WILKINS, University of Chicago.

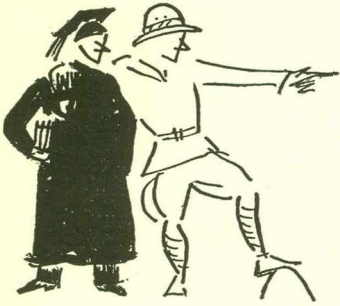
MR. JAMES M. WOOD, *President*, Stephens College.



KNY-20-

01071

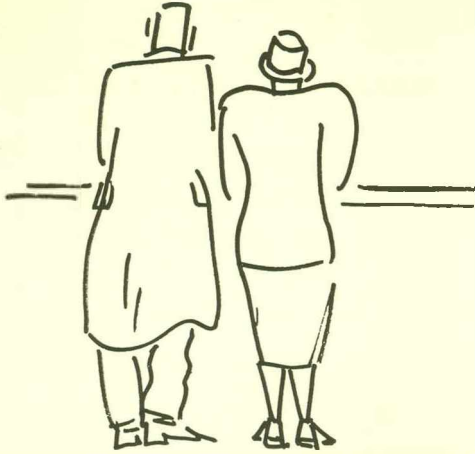
History



American education needed a new summer school! Those of us who attended the old did so with a groan—the others put all academic thoughts away with their books and tried to forget that September came after August and August was only two sun-filled weeks away.

Thus the valuable time for digesting, comparing, and weighing the hodge-podge collection of a year's accumulation of knowledge was lost and we returned to school without having harvested the last year's crops. Something different was needed—a mental stimulus—a different environment in which we could not take this and that for granted from habit—an environment in which we had to think and thus compare. A few of us knew Europe as the ideal summer school. We gained invaluable knowledge in the process of joyful adventure and returned with a new zest for the fray. Others heard and smiled at the thought of Father shouldering the expense.

At this stage of the game—three years ago—the S. T. C. A. was formed to enable students to go to Europe inexpensively—they went. In three years the S. T. C. A. has opened the door of Europe to thousands of students and now a trip to Europe has become an essential and very pleasant part of a college education.



ALTHOUGH the idea of a Tourist Third Cabin has been universally adopted, the S. T. C. A. remains the only one entirely for students and people whose tastes make them congenial with this group.

The first fundamentals of S. T. C. A.—application blanks in all cases and a Hostess and Leader on each trip—are S. T. C. A. fundamentals today.

BACK-BONE—S. T. C. A. parties are limited in membership. In all cases, the S. T. C. A. requires application blanks with references and photograph, and offers its trips only to students and the people with whom they naturally associate. However, there is no age restriction and a college degree is not necessarily required. The Committee on Membership reserves the right to refuse any application.

HOSTESSES—A Hostess accompanies each ship and acts as Head Chaperon. She is aided by the Chaperons of girls accompanying the S. T. C. A. parties.

June 11—MRS. JULIAN SMALLWOOD, 1009 North Calvert St., Baltimore, Md.

June 18—

June 25—MRS. RALPH HARLOW, Smith College, Northampton, Mass.

June 29—MISS ELIZABETH CONRAD, University of Iowa, Iowa City, Iowa.

The other Hostesses will be announced at a later date. Parents are invited to write the Chaperons who will give any information concerning the *Rules* on shipboard and other details which may be desired. The S. T. C. A. appreciates the concern of parents and with this in mind, will make arrangements for competent chaperonage of girls in Paris, if advised in ample time, for the first few days after arrival of each party.

LEADERS—On each S. T. C. A. sailing there is a Leader who has general charge of the comfort and entertainment of the party.

June 11—MR. JULIAN SMALLWOOD, Johns Hopkins
University, Baltimore, Md.

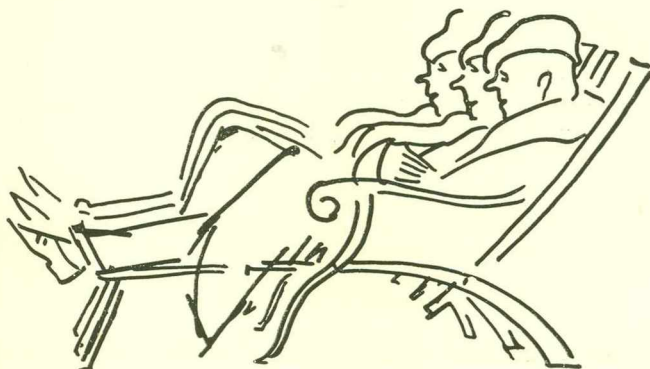
June 18—

June 25—MR. RALPH HARLOW

June 29—MR. W. C. POWELL

July 2 —

Each S. T. C. A. member is required to abide by certain rules of conduct made to promote the welfare of the party as a whole, and it is the duty of the Hostess and Leader to see that these rules are observed.





TECHNICAL—Of prime importance on shipboard are cleanliness and cuisine and for this reason, S. T. C. A. trips have been and will be run again this year, entirely on the steamers of the Holland America Line. The reputation of the Holland America Line for these things has been shown by experience to

apply in full to the Third Cabin of her ships. Dutch cleanliness is conspicuous. The lavatories, in charge of a steward, are spotless and the dining room and cabins are as clean as your own home.

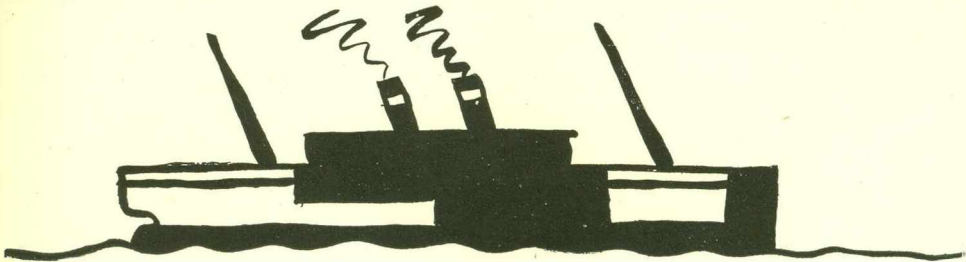
Although the menu is not an elaborate one, it is amply generous to off-set sea air appetites and so balanced as to appeal to the more delicate appetite of the "Quite well today, thank you" passengers. Absolutely the same quality of food is served in the First Cabin as in the Third Cabin. The commendations of S. T. C. A. voyagers are proof enough, the management feels, of the goodness of the cuisine.

Above all, the cabins are comfortable. They are built to satisfactorily accommodate one, two, three and four persons. Inasmuch as the cabins are allotted in order of priority, it is urged that early application be made. The corridors and cabins are ventilated by the most modern methods possible to assure a constant circulation of fresh air.

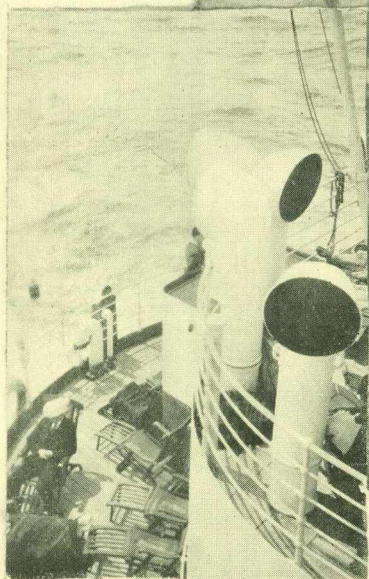
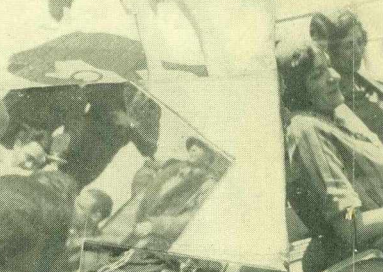
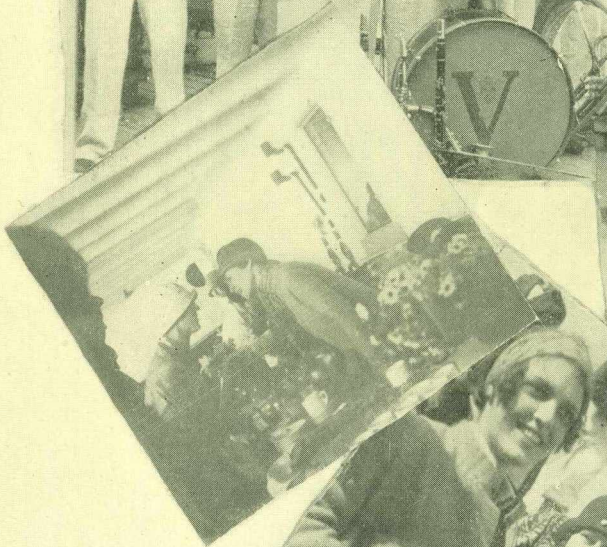
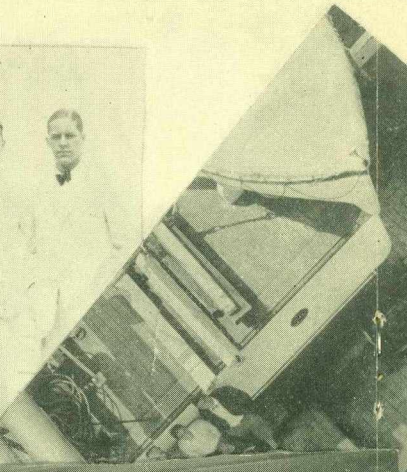
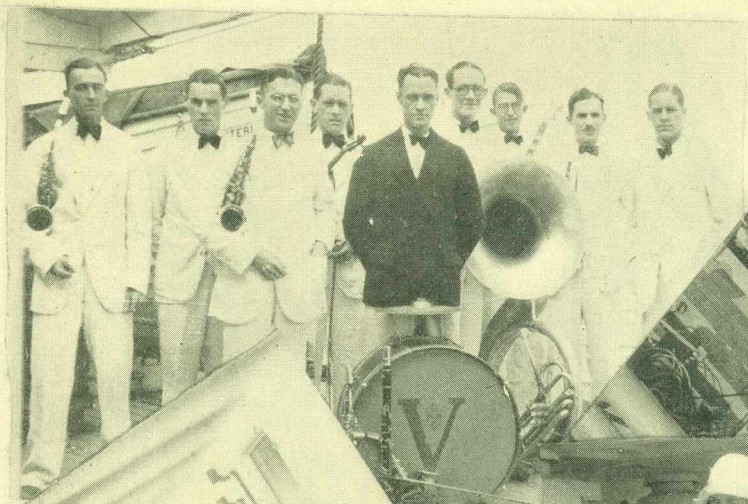


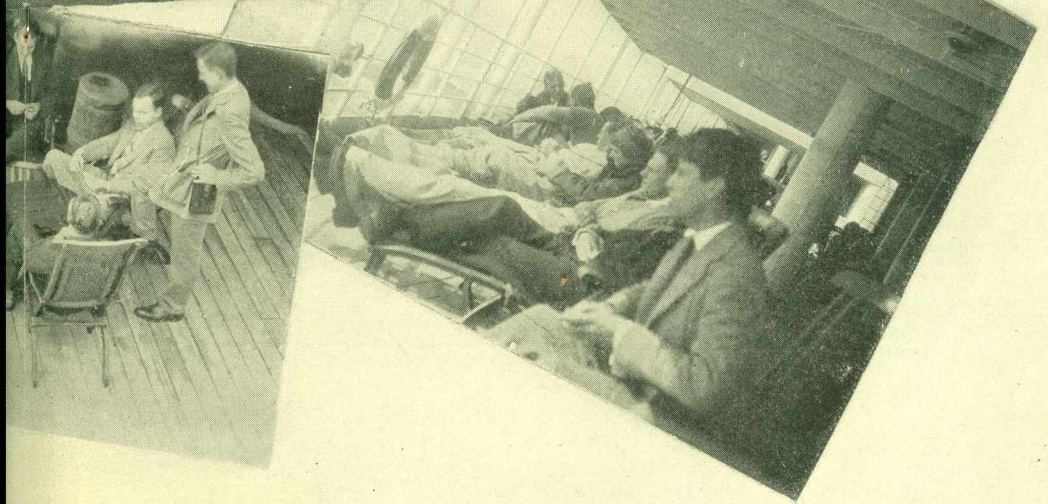
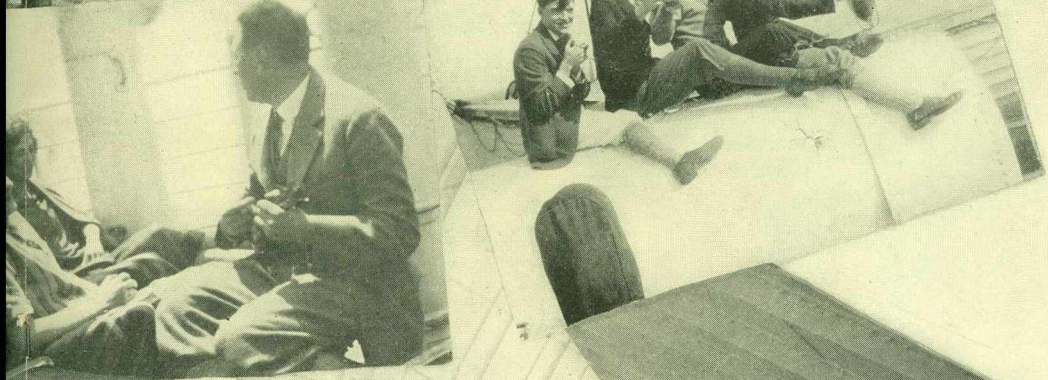
Well trained stewards and stewardesses are attentive in providing for the wants of all. Arrangements may be made with the Bath Steward for hot salt baths and showers. The Deck Steward furnishes deck chairs and steamer rugs at the usual cost. There is an ample supply of deck chairs. The Deck Space is adequate for chairs, games and promenades. Bouillon is served on Deck in the morning and tea in the afternoon.

The cross section of one of the ships, pictured below, shows the location of the sections reserved for the S. T. C. A. As will be noted, the cabins are situated on the same decks used for First and Second class. A special section of cabins is set aside for the girls and the Hostess.



SHOWING RELATIVE LOCATION OF THIRD CABIN







DANCING and MUSIC

As in previous years it is the intention to have a college orchestra on

board to furnish music for the dances and concerts. Subject to change, a college orchestra will accompany the following sailings:

June 11—University of Michigan “Wolverines.”

June 18—University of South Carolina “Gamecocks.”

June 25—The Yale Dance Orchestra.

June 29—Intercollegiate Aces of Princeton, Yale and Dartmouth.

July 2 —

ON TRAVEL IN EUROPE—We unhesitatingly recommend a pre-arranged land tour for most of those visiting Europe for the first time. Without a full knowledge of what to see and where to see it, as well as a working familiarity with the customs and languages of foreign countries, much of the value of a European trip may be lost. Furthermore, well planned land tours do not cut in unduly upon one's personal freedom — in



fact, many itineraries are left indefinite to be worked out later by the Leader and members of the party. There are very interesting "Sojourns in Europe" under the auspices of "The

Open Road," acting as agent for the "International Student Hospitality Association." Private motor tours are becoming popular—they are inexpensive and most satisfactory. There are many privately organized tours including walking trips, architectural tours and summer schools. The S. T. C. A. wants you to make the most of your summer and will gladly furnish information and suggestions for your trip.

EUROPE ON WHEELS—The S. T. C. A. announces "Europe on Wheels"—a new service started by a French Company. It is now possible to hire your own car over there for your whole stay abroad or part of it which means, of course, seeing much more of the country, eliminating "lost" trains, baggage worries, and tired feet. The surprising thing is that for three or four people, your own motor is cheaper than rail travel. Terms are by the day or week. Similar arrangements may be made for bicycles and motorcycles. Full information may be had from the S. T. C. A.

OF SPECIAL INTEREST—The informality of S. T. C. A. trips is one of its greatest charms. It is possible because these trips are made up of people of similar tastes. Comfort in relaxation, in dress and recreation can be accomplished only under these circumstances.

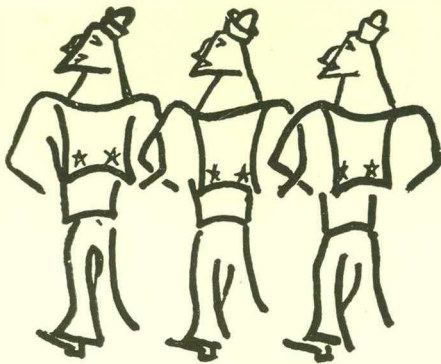
PASSPORTS—Passports are necessary in foreign countries and visas for the countries to be visited must be obtained from the respective Consulates in the United States.

ALIENS—Alien residents previously admitted to the United States returning from temporary visits abroad, may now obtain re-entry permits and thus avoid the unpleasantness of conflict with Immigration authorities on returning. Further information may be obtained from the management.

AVOIDING THE RUSH—Patrons of the S. T. C. A. are invited to send their mail care of Holland America Line, 4 Rue Scribe, Paris, or care of the Holland America Line, 18-19 Pall Mall, London, S. W. 1, England.

SHOPPING SERVICE—The S. T. C. A. offers expert assistance for shopping abroad and maintains a specialist in its Paris Office to render service to S. T. C. A. patrons without charge.

IN EXPLANATION— of the sailing list on page 15—the sailings not starred do not require application blanks for membership. This does not mean that the bookings are unrestricted, however, for these sailings are the Holland America Line Tourist Third Cabin sailings for students, teachers and professional people. The rates, service, and accommodations are the same as for the S. T. C. A. and many S. T. C. A. people travel on these sailings each year.



Rates

ROUND TRIP RATES

New York to Plymouth and return from Southampton
(depending upon choice of ships) \$165 to \$175

New York to Boulogne-Sur-Mer, France, and return \$177

New York to Rotterdam, Holland, and return - \$185

(Plus \$5.00 Government Tax in all cases and
\$8.00 Head Tax on all returning Aliens)

ONE WAY RATES

EAST-BOUND

WEST-BOUND

To Plymouth \$95 From Southampton \$97.50 & \$100

To Boulogne \$100 From Boulogne \$122.50

To Rotterdam \$110 From Rotterdam \$122.50

Plus \$5.00 Government Tax
in each case

Plus \$8.00 Head Tax on
all Aliens

East-bound Holland America Line ships call at Plymouth in England, Boulogne-Sur-Mer in France and Rotterdam in Holland.

West-bound in Rotterdam, Holland, Boulogne-Sur-Mer, France, and Southampton in England.

Each round trip ticket is good for one year from date of issue.

The charge for steamer rugs and chairs is \$1.50 each.

Tipping is usually done collectively and amounts to about \$5 each way.

A regulation steamer trunk may be taken in the stateroom.

Sailings

EASTBOUND

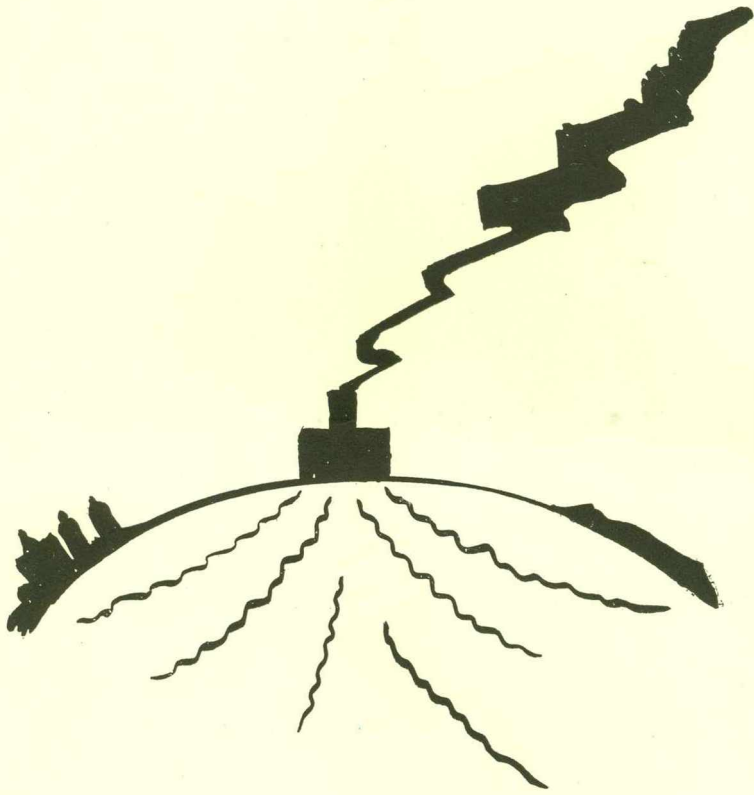
Thursday	Apr. 7	11 A. M.	VEENDAM
Saturday	Apr. 16	"	NEW AMSTERDAM
Saturday	Apr. 23	"	VOLENDAM
Saturday	Apr. 30	10 A. M.	ROTTERDAM
Saturday	May 7	"	RYNDAM
Saturday	May 14	"	VEENDAM
Saturday	May 21	"	NEW AMSTERDAM
Saturday	June 4	"	ROTTERDAM
* Saturday	June 11	"	VOLENDAM
* Saturday	June 18	"	VEENDAM
* Saturday	June 25	"	NEW AMSTERDAM
* Wednesday	June 29	"	RYNDAM
Saturday	July 2	"	ROTTERDAM
Saturday	July 16	"	VOLENDAM
Saturday	July 23	"	VEENDAM
Saturday	July 30	"	NEW AMSTERDAM
Saturday	Aug. 6	"	ROTTERDAM
Saturday	Aug. 20	"	VOLENDAM
Saturday	Aug. 27	"	VEENDAM
Saturday	Sept. 3	"	NEW AMSTERDAM
Saturday	Sept. 10	"	ROTTERDAM
Saturday	Sept. 24	"	VOLENDAM

WESTBOUND

Wednesday	June 1	VEENDAM
Tuesday	June 7	NEW AMSTERDAM
Friday	June 10	RYNDAM
Saturday	June 18	ROTTERDAM
Wednesday	June 29	VOLENDAM
Tuesday	July 5	VEENDAM
Tuesday	July 12	NEW AMSTERDAM
Wednesday	July 20	ROTTERDAM
Wednesday	Aug. 3	VOLENDAM
Tuesday	Aug. 9	VEENDAM
Wednesday	Aug. 17	NEW AMSTERDAM
* Friday	Aug. 19	RYNDAM
* Tuesday	Aug. 23	ROTTERDAM
* Tuesday	Sept. 6	VOLENDAM
Wednesday	Sept. 14	VEENDAM
Wednesday	Sept. 21	NEW AMSTERDAM
Wednesday	Sept. 28	ROTTERDAM
Wednesday	Oct. 12	VOLENDAM
Tuesday	Oct. 18	VEENDAM
Wednesday	Oct. 26	NEW AMSTERDAM

Subject to change without notice

**These are S. T. C. A. Sailings; application blanks are required in all cases.*



Student Third Cabin Association

HOLLAND AMERICA LINE

24 STATE STREET

New York

