

## **Nasty Beauty**

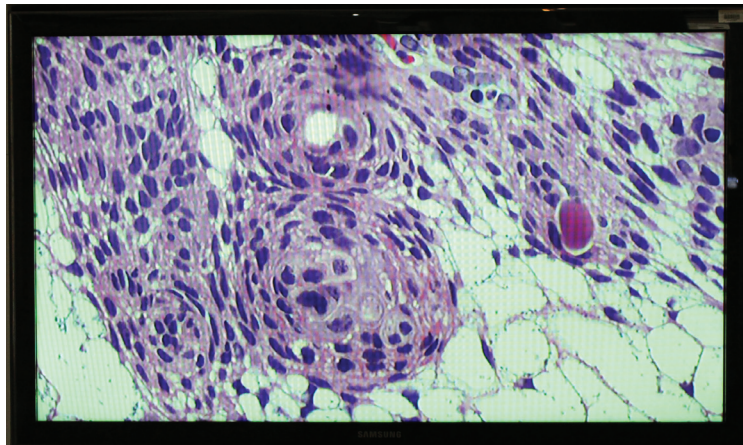
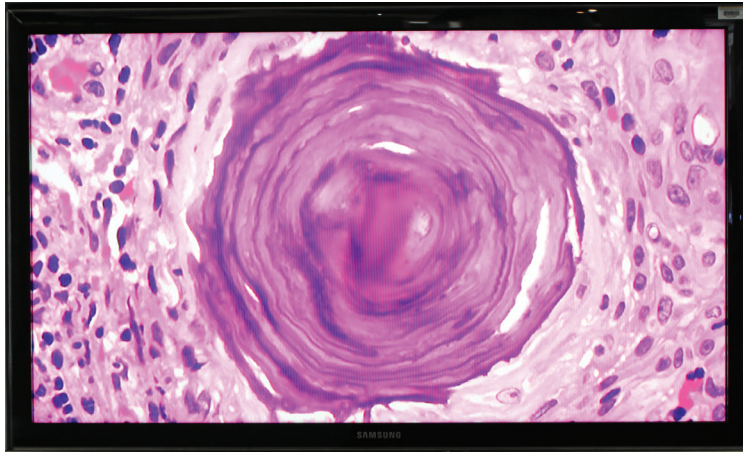
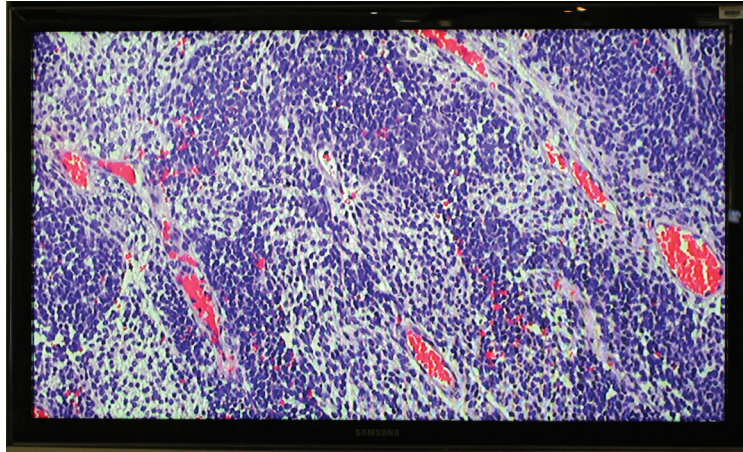
Norhafizah Mohtarrudin, Fauziah Kassim and  
Fatimah Ahmad Sharifuddin

A brain tumour is formed from an abnormal growth of cells in the brain that multiplies in an uncontrollable way. It can either be cancerous (malignant) or non-cancerous (benign). Though non-cancerous, the tumour could be fatal if it is located at the vital region of the brain. Brain tumours affect people of any age including children even though they tend to be more common in older adults. It causes many complications including persistent headaches, fits, nausea, vomiting and drowsiness, mental or behavioural changes, progressive weakness of the body, vision and speech problems, or even death.

Diagnosis of brain tumour is made through histopathological examination. Under microscope, tumour cells display diverse patterns and shapes with variable background and matrix. Many are artfully beautiful with stunning colours whereas others have ferocious looking.

There are roses (rosettes) and small flowers (fleurettes) decorating the tumours. Not to forget thick, elongated, worm-like or “corkscrew” structures (Rosental fibers), hair-like (pilocytic), fibrillary and finger-like (papillary) projections. Onion bulb, calcified bodies (psammoma bodies) are garnishing the others. The cells are round to oval while some display honeycomb appearance. They are embedded within various backgrounds; from fibrillary meshwork to network of branching capillaries to mucinous and many more.

Brain tumour is a dreadful disease yet it offers a colourful life through its assorted and stunning canvas art when captured by a camera.

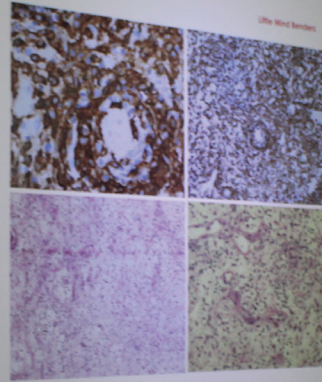
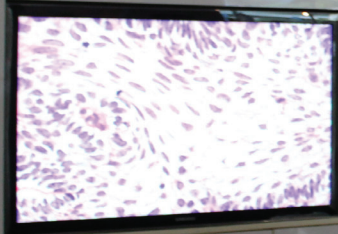


### Nasty Beauty

Noorhafizah Mohamadudin, Fauziah Kasim and Fatimah Ahmad Sharifuddin

Diagnosis of brain tumour is made through histopathological examination. Under microscope, tumour cells display diverse patterns and shapes with variable background and matrix. Many are artfully beautiful with stunning colours whereas others have ferocious looking.

Brain tumour is a dreadful disease yet it offers colourful life through its assorted and stunning canvas art when captured by a camera.



Life Mind Bender

Noorhafizah Mohamadudin, Fauziah Kasim, and Fatimah Ahmad Sharifuddin

These little mind benders have a unique reproductive strategy. It moves its home and can only reproduce within cat's digestive tract. It feeds its offspring via cat faeces, hoping to infect the rodents. Once infected, it makes its way and lodges into the rodent's brain.

T gondii wormed its way into human via cat faeces, uncooked meat or contaminated food. Once consumed, it hatches and lodges in the human brain. It subtly changes the person's personality and manipulating the behaviour and it may increase the risk of suicide attempt, brain cancer and schizophrenia.

brates such as  
tebrate anima  
that serves as  
brate@the brai  
that serves as  
is an organ th  
that serves as  
brate@the brai  
that serves as  
brates such a  
brate@the brai  
that serves as  
is the most c  
that serves a  
brate@the brai  
t invertebrat  
rons commun  
t invertebrat  
brate@the brai  
t invertebrat  
rons commun  
inate@the brai  
t invertebrat  
brate@the brai  
t invertebrat  
brates commu  
inate@the brai  
brates commu  
axons,  
serves a



Nasyi Beatty  
Nahlahah Mohamad, Fauzan Kasim and Fatimah Ahmad Shariluddin.

Diagnosis of brain tumour is made through histopathological examination. Under microscope, tumour cells display diverse patterns and shapes with variable background and matrix. Many are artfully beautiful with stunning colours whereas others have ferocious looking.

Brain tumour is a dreadful disease yet it offers colourful life through its assorted and stunning canvas art when captured by a camera.

