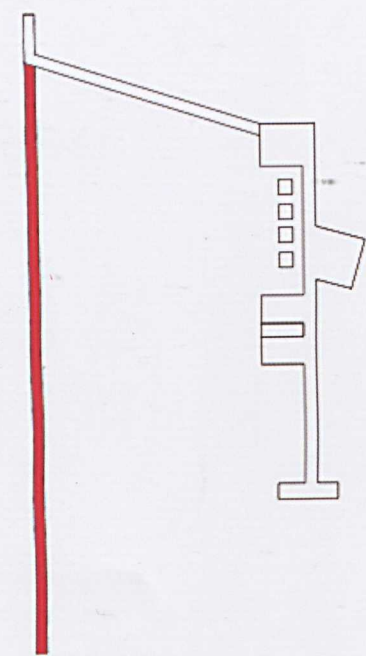
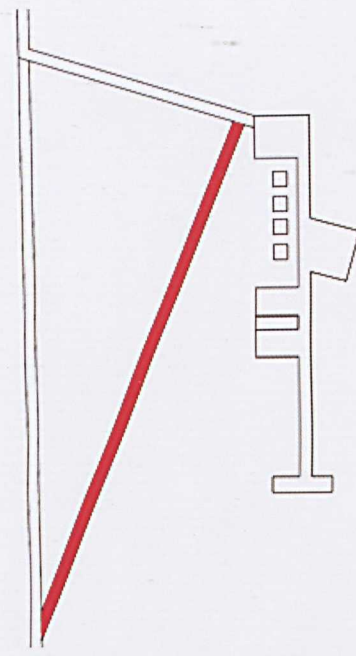
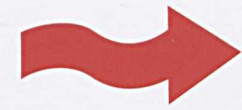


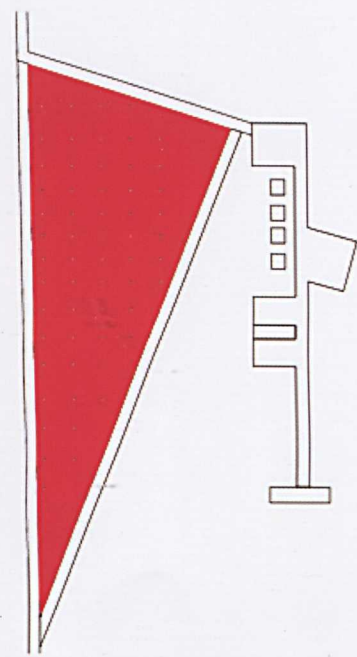
erosion at shoreline



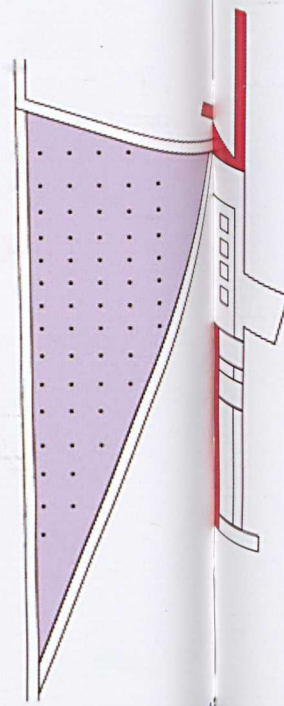
riprap added



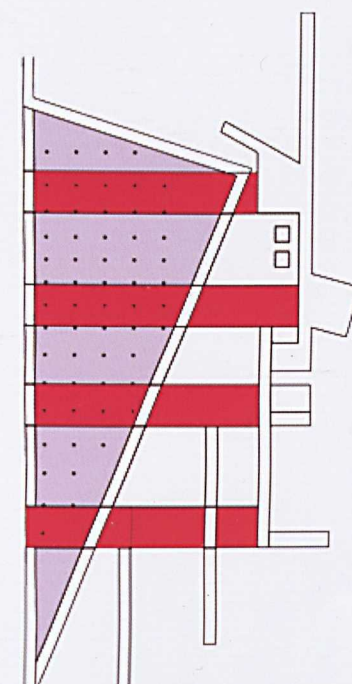
wave breaker



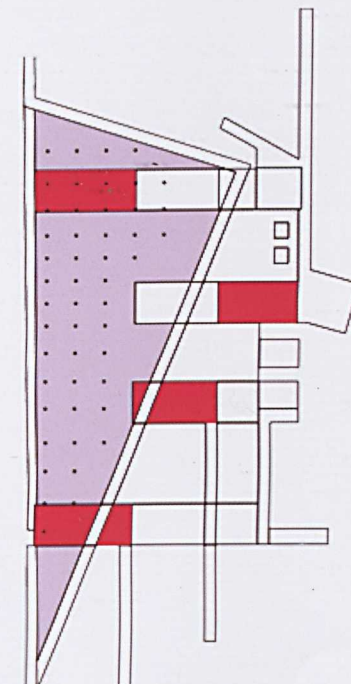
stacking to hold sediment



sunken meditation decking



transition added



New environment

13 The Scale of Nature

Mohd Nazri Saidon & Abd Aziz Othman

Jury Review

Mohd Ramzi Mohd Hussain & Lee Wern Ching

Green Camping

Mohd Nazri Saidon & Abd Aziz Othman

Mangrove Nostalgia

Mohd Nazri Saidon & Abd Aziz Othman

Tanjung Piai Inter-vocation Destination

Mohd Nazri Saidon & Abd Aziz Othman

The Scale of Nature

Mohd Nazri Saidon & Abd Aziz Othman

Land is an important resource and sensitive instrument in landscape planning and design. It provides habitats for most living creatures of the earth. Thus, great attention must be given as the human habitation has dominated and exploited the land since civilizations. To highlight this regard, one of the studio exercises for the programme of Landscape Architecture at Universiti Putra Malaysia is the landscape planning and design of sensitive area. It is about the ecological landscape planning and design. The studio emphasizes on the assessment, planning, design, engineering and management of sensitive landscape area in order to enhance the unique landscape characteristics of sites as well as the quality of environments to meet the needs of humans and nature.

For that, the 'Scale of Nature' is introduced to assess the competency of Year Four landscape architecture students towards their sensitivity in natural habitat. Students were asked to design a landscape of sensitive area that involved nature and human habitation. The challenge was to provide beneficial spaces for human activities without jeopardizing the existing habitats of wildlife and native vegetation.

Tanjung Piai, Johor has been selected for this purpose. It is located at latitude 1.16' N and longitude 103.4 46' E, known as the Southern most tip of mainland Asia. Tanjung Piai was gazetted as National Park of Malaysia because of its naturalness and biodiversity. As a coastal area as well as an area of brackish intertidal mudflats, it is dominantly covered by mangroves which are the best habitat for most aquatic creatures. There is also an ethnic Malay-Bugis village close to the selected site. These factors give enough complexity of the ecosystem to deal with. Thus, a comprehensive landscape design solution and approaches are needed in order to achieve the site sustainability through biodiversity.

To perform this exercise, the students' tasks were to prepare a landscape master plan of Tanjung Piai National Park, to provide a complete detailed design. Students worked in groups to prepare the landscape master plan. By this, they were exercised to work in teams by sharing opinions and ideas especially dealing with the complex ecosystem of sensitive site. Thorough studies of ecology, social, vegetation and wildlife habitats were focused in order to provide the solutions. The individual exercises were then proceeded to provide detailed design of the landscape master plan. Finally a comprehensive report was produced to show a complete design process: site analysis, synthesis, design concept and approach, the landscape master plan as well as the detailed design that was done throughout the semester.

Three best ideas and solutions of the above exercise are selected as shown in the next pages, namely: Prelude and Nostalgia proposed by Yuen Shang Zi; Green Camping (in the mangrove forest) proposed by Nik Azwati Nik Mustafa; the Interpretive Trail proposed by Muhammad Akbar Kamaruddin. In general, the exercises are impressive in terms of ideas and solutions, creativity, and most importantly to create sustainable landscape design and standard operation procedures for the management of sensitive area

Jury Review

Mohd Ramzi Mohd Hussain & Lee Wern Ching.

The 'Scale of Nature' focuses on the ecological landscape design of Tanjung Piai National Park, Johor Malaysia. Three different objectives and approaches have been selected namely: The Landscape Design for Camping Site; Tanjung Piai ; Prelude and Nostalgia; and Tanjung Piai Inter-vocation Destination.

The Landscape Design for Camping Site : This project begins with the landscape design for camping site. The project shows a crucial and important aspect of landscape design even though it is relatively small in scale. It portrays a unique and challenging idea in providing different types of experiences in nature. The design approach is to respond to the natural characteristics of the site by encouraging exploration of natural beauty as well as creating the habitat for wildlife. The concept is well-illustrated to explain the design process intelligently. The idea of having elevated camp sites in mangrove community shows the designer's concern for natural habitat that must be protected for biodiversity. However, we would expect a more dispersed camp site for space 'breathing' instead of one with the camping spots huddled closely together. The proposed straight entrance walkway cutting into the site is seemed inappropriate in a natural setting. More intimate walkways that bend and wrap around the mangrove trees is more logical. Overall, this project demonstrates the genuine idea and credible attempt in designing landscape of sensitive area.

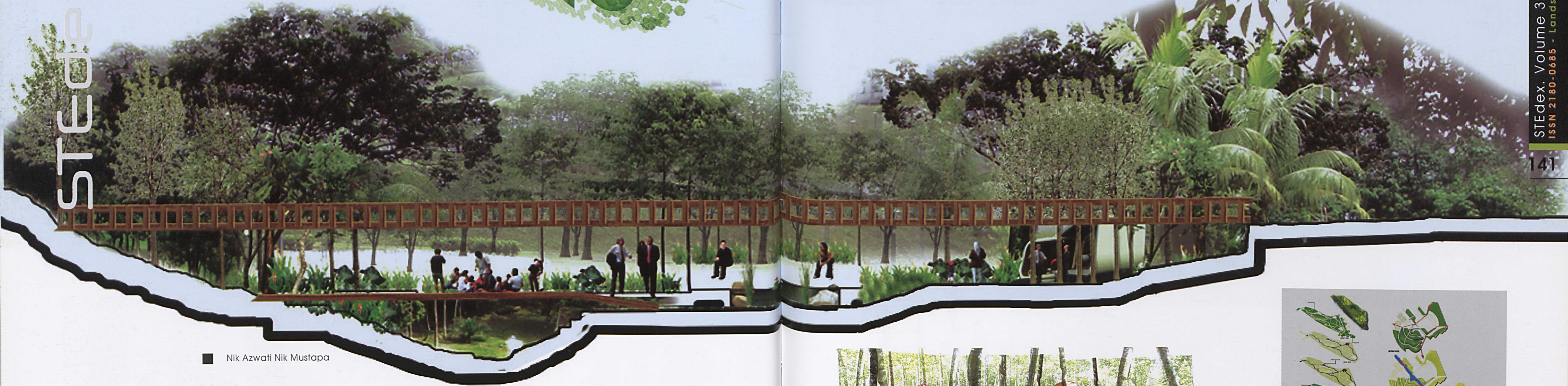
The Tanjung Piai: Prelude and Nostalgia: This second project shows a strong justification and well-defined conceptual design. The concept diagrams clearly illustrate the design ideas and space interpretation based on the ecological design theory and philosophy. The good intention, however, is on the detailed method to protect the shorelines and revitalizes the site for sustainability. In doing this, the designer wisely introduces new buildings within the mangrove forest. It is a normal challenge in landscape design to materialize structures in natural eco-system. In general, the project demonstrates the matured and creative ideas in dealing with sensitive area of mangrove.

Tanjung Piai Inter-Vocation Destination: This third project proposes an interpretive trail in the mangrove area. It shows a good approach in conserving the mangrove forest and ecosystem. Understanding ecological aspects such as soil series, vegetation (mangrove species, ecosystem etc.) lead to the best conception of landscape design solution and approach of sensitive site. Here, the application of layering technique as it was first introduced by Ian McHarg (1969), clearly describes the principles used in searching the best design solution. Thus, the landscape master plan gives more impact in treating the sensitive issues. Credit is given to the designer for showing a thorough site analysis and clear illustrations of the design process. In general, the project is able to deliver what elements should be considered in designing the natural landscape for sustainability.

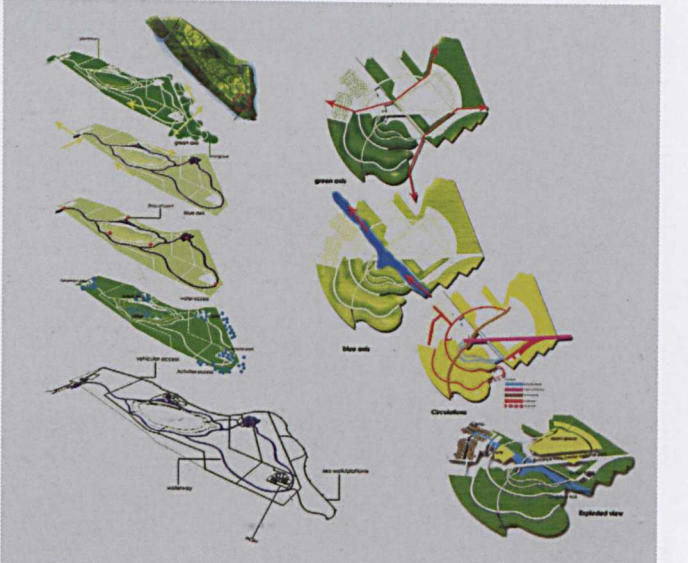
Green Camping

Mohd Nazri Saidon & Abd Aziz Othman

The camp site project introduces a dynamic green strategy that promotes spatial, social and cultural values for ecological recreational theme. The 'green camping' attempts to deal with the richness of the existing biodiversity and ecological systems. A complexity of resources such as plant species, fauna and habitats, water condition and natural condition are the main factors that influence the design solutions. This project manipulates the available resources with minimal human intervention to help improve the cultural lifestyle and the quality of life of the inhabitants



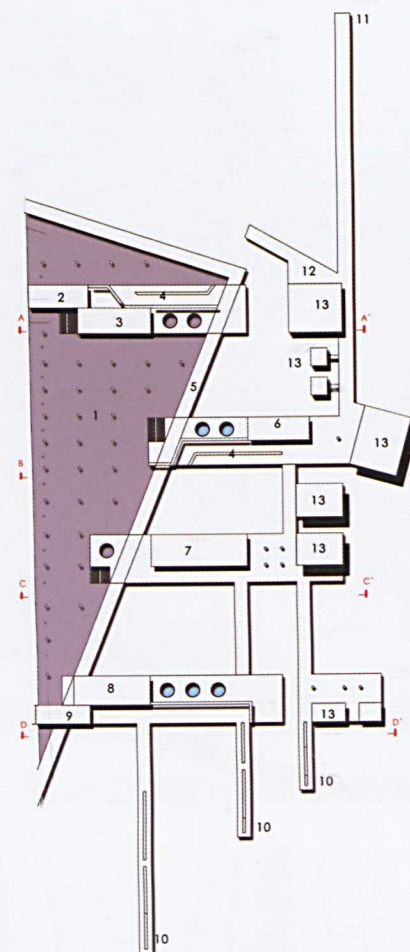
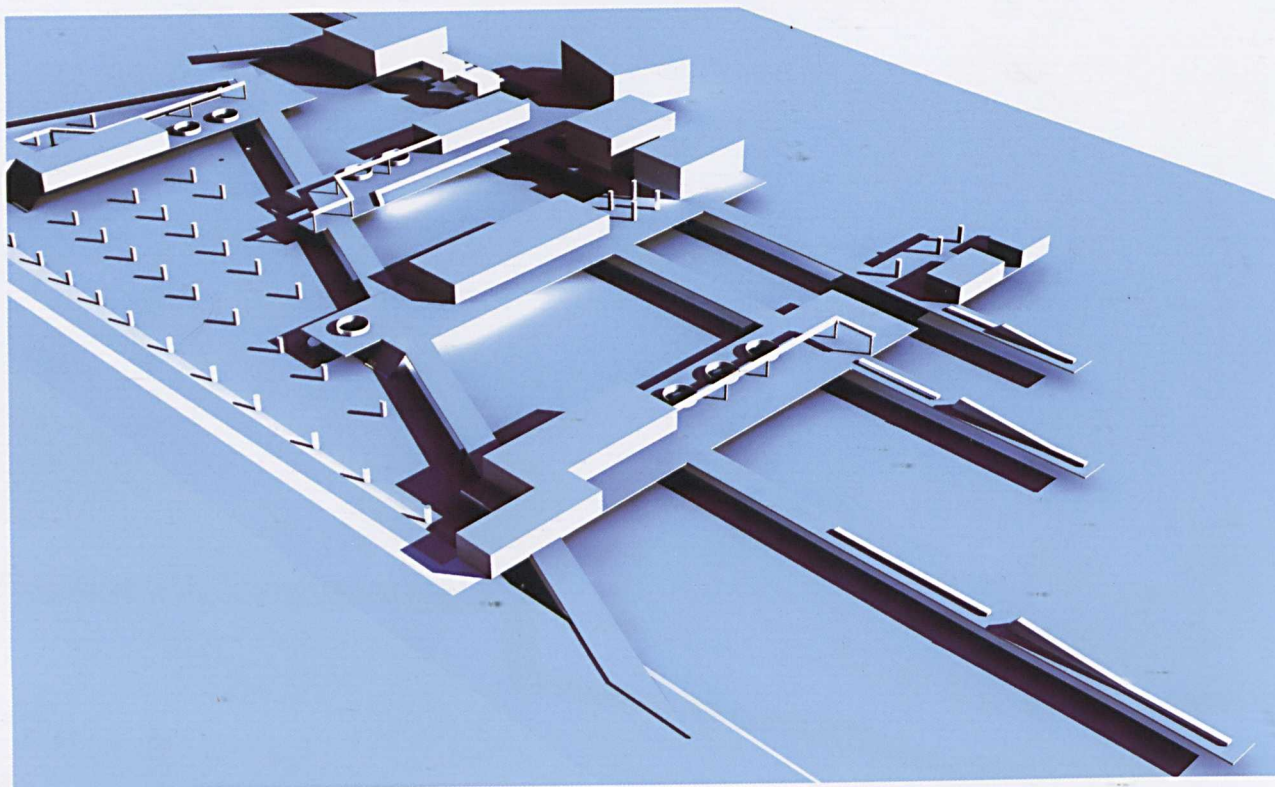
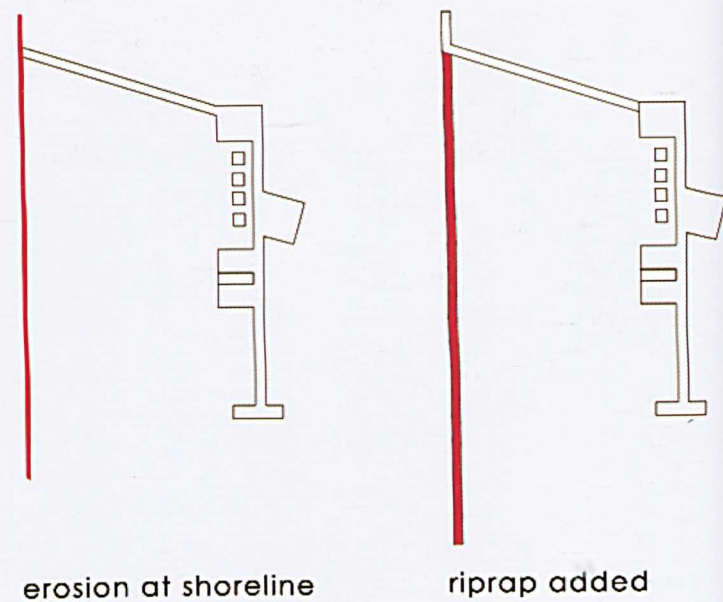
■ Nik Azwati Nik Mustapa



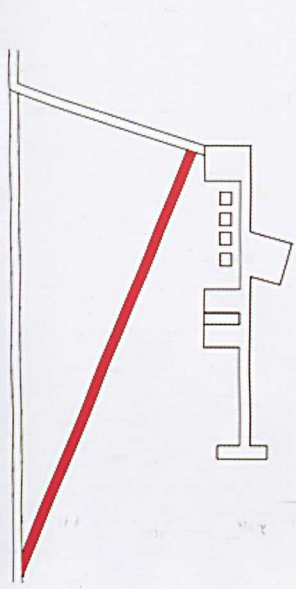
Mangrove Nostalgia

Mohd Nazri Saidon & Abd Aziz Othman

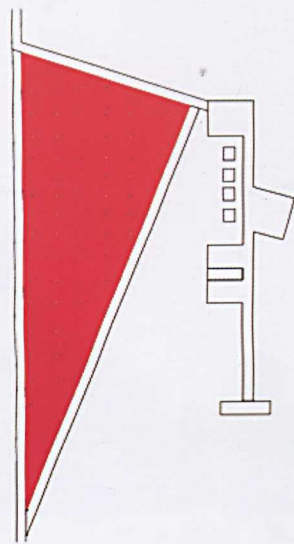
Tanjung Piai National Park project is an exploration of ideas on sustainable design inspired by IX-Horizontal Daniel Libeskind artworks. Direct, easy and humanized are fundamental vocabularies used to portray an effective concept that aims to connect people and nature in the natural mangrove environment. The horizontal approach adopted in this project resembles the intimate sense of natural and social appreciation enhancing the richness of Tanjung Piai area.



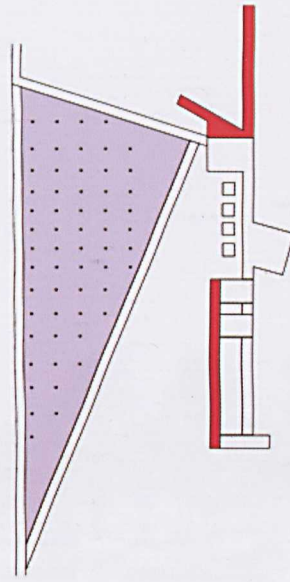
■ Yuen Shang Zhi



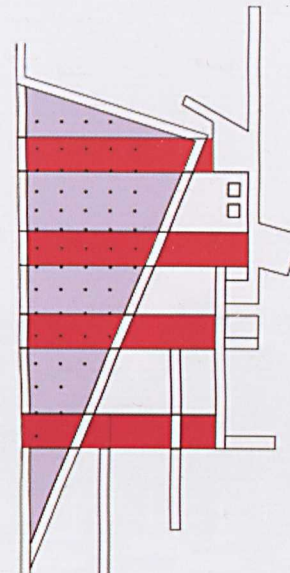
wave breaker



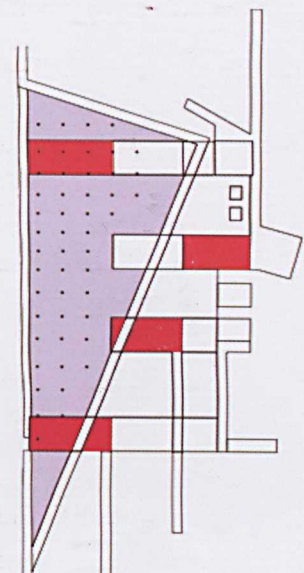
stacking to hold sediment



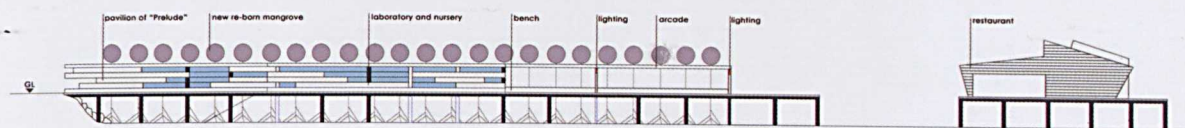
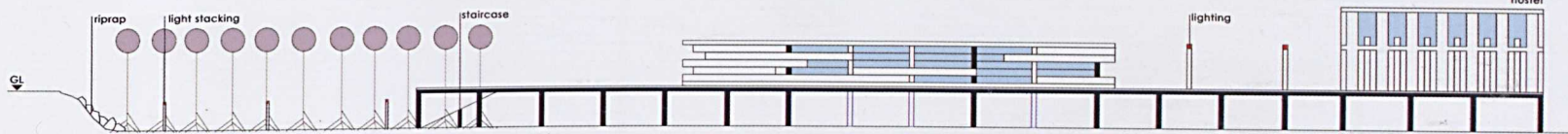
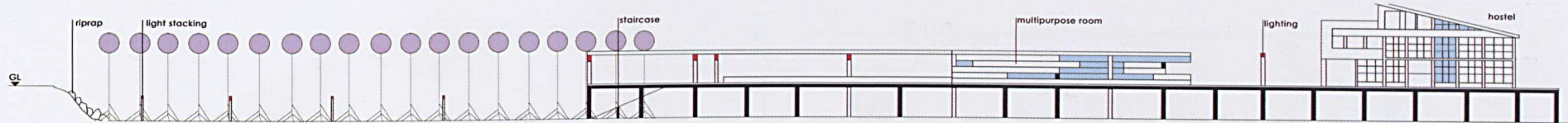
sunken meditation decking

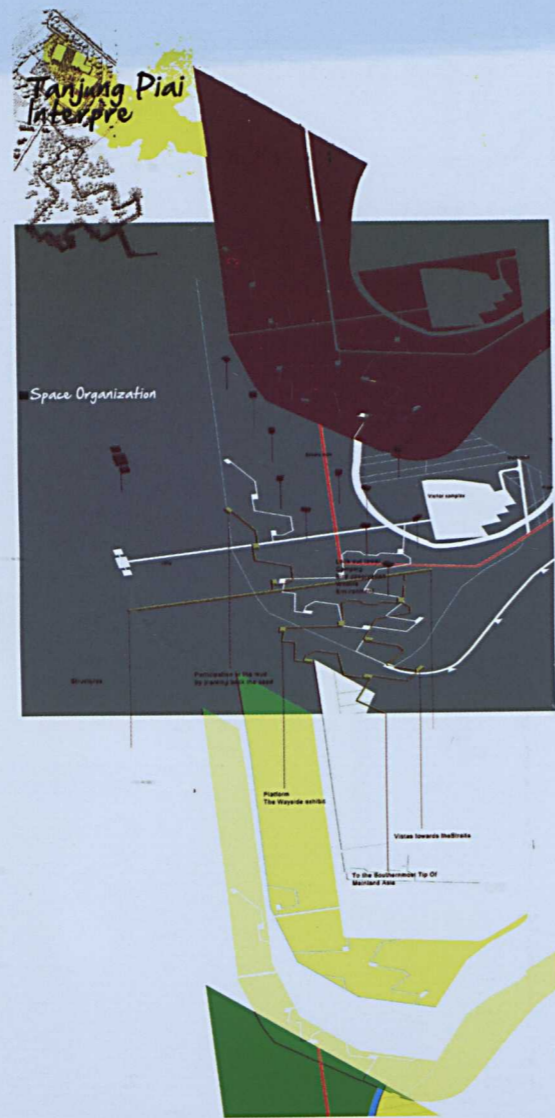


transition added



New environment

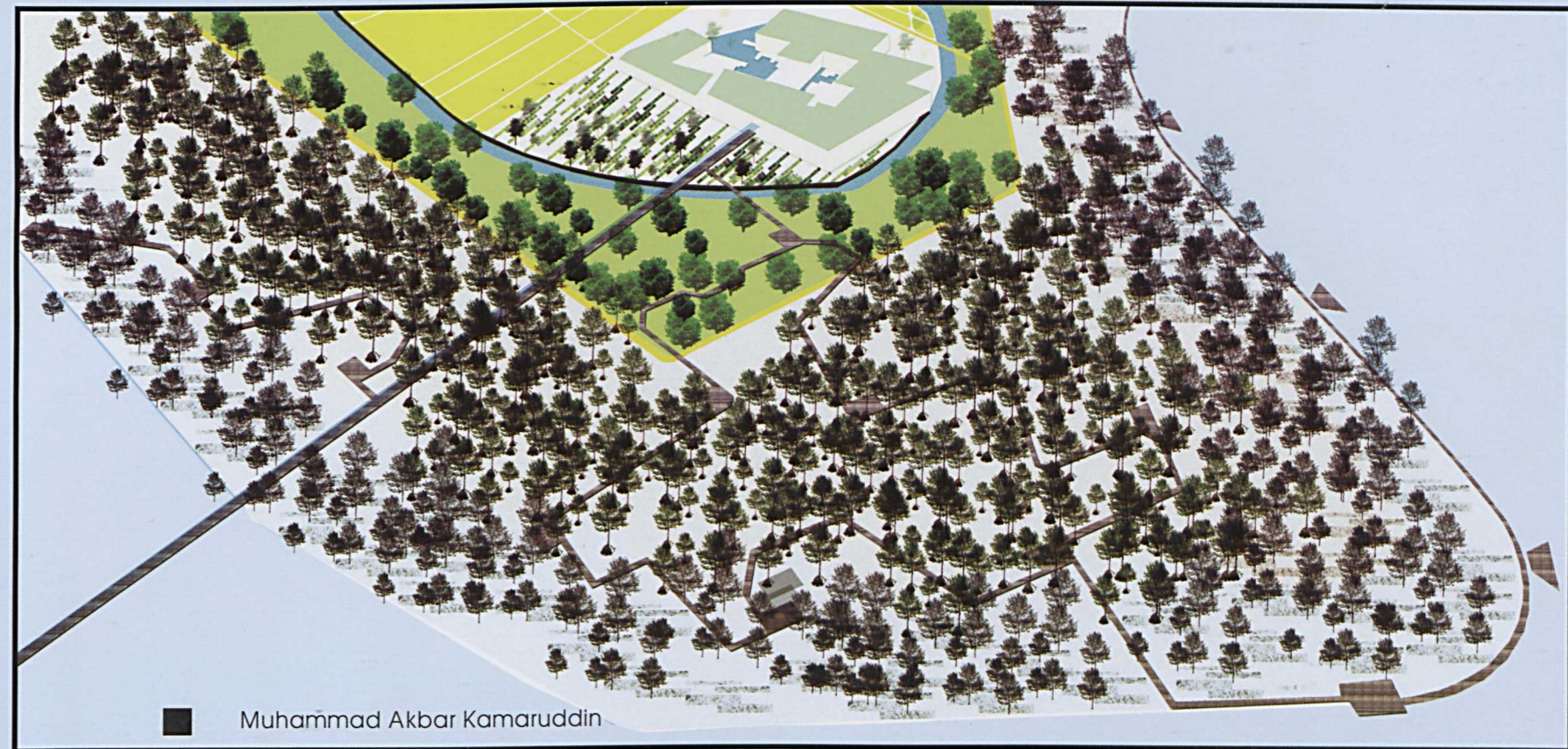




Tanjung Piai Inter-vocation Destination

Mohd Nazri Saidon & Abd Aziz Othman

This project exemplifies a mangrove protection initiative based on Ramsar Site Convention. This design approach introduces methods on how to conserve the sensitive natural mangrove forest. This project aimed at transforming the existing core area into a protected mangrove forest by injecting an inter-vocation program for the purpose of ecological awareness and education. The segmented zoning is able to incorporate dryland forest, avicennia forest and rhizophora forest ensuring peoples' excitement while experiencing the natural sanctuary



Muhammad Akbar Kamaruddin