



This is a repository copy of *Clinicopathological Significance of ATM-Chk2 Expression in Sporadic Breast Cancers: a Comprehensive Analysis in Large Cohorts.*

White Rose Research Online URL for this paper:
<http://eprints.whiterose.ac.uk/129244/>

Version: Published Version

Article:

Abdel-Fatah, T.M.A., Arora, A., Alsubhi, N. et al. (10 more authors) (2014)
Clinicopathological Significance of ATM-Chk2 Expression in Sporadic Breast Cancers: a Comprehensive Analysis in Large Cohorts. *Neoplasia* , 16 (11). pp. 982-991. ISSN 1522-8002

<https://doi.org/10.1016/j.neo.2014.09.009>

Reuse

This article is distributed under the terms of the Creative Commons Attribution-NonCommercial-NoDerivs (CC BY-NC-ND) licence. This licence only allows you to download this work and share it with others as long as you credit the authors, but you can't change the article in any way or use it commercially. More information and the full terms of the licence here: <https://creativecommons.org/licenses/>

Takedown

If you consider content in White Rose Research Online to be in breach of UK law, please notify us by emailing eprints@whiterose.ac.uk including the URL of the record and the reason for the withdrawal request.



eprints@whiterose.ac.uk
<https://eprints.whiterose.ac.uk/>

Clinicopathological Significance of ATM-Chk2 Expression in Sporadic Breast Cancers: a Comprehensive Analysis in Large Cohorts¹

Tarek M.A. Abdel-Fatah^{*,2}, Arvind Arora^{†,2}, Nouf Alsubhi[‡], Devika Agarwal^d, Paul M. Moseley[†], Christina Perry[†], Rachel Doherty[†], Stephen Y.T. Chan[†], Andrew R. Green[‡], Emad Rakha[‡], Graham Ball[§], Ian O. Ellis[‡] and Srinivasan Madhusudan^{*,†}

*Department of Oncology, Nottingham University Hospitals, Nottingham NG5 1 PB, UK; †Academic Unit of Oncology, Division of Cancer and Stem Cells, School of Medicine, University of Nottingham, Nottingham University Hospitals, Nottingham NG5 1 PB, UK; ‡Department of Pathology, Division of Cancer and Stem Cells, School of Medicine, University of Nottingham, Nottingham University Hospitals, Nottingham NG5 1 PB, UK; §School of Science and Technology, Nottingham Trent University, Clifton Campus, Nottingham NG11 8NS, UK

Abstract

ATM-Chk2 network is critical for genomic stability, and its deregulation may influence breast cancer pathogenesis. We investigated ATM and Chk2 protein levels in two cohorts [cohort 1 ($n = 1650$) and cohort 2 ($n = 252$)]. *ATM* and *Chk2* mRNA expression was evaluated in the Molecular Taxonomy of Breast Cancer International Consortium cohort ($n = 1950$). Low nuclear ATM protein level was significantly associated with aggressive breast cancer including larger tumors, higher tumor grade, higher mitotic index, pleomorphism, tumor type, lymphovascular invasion, estrogen receptor (ER)–, PR –, AR –, triple-negative, and basal-like phenotypes ($P_s < .05$). Breast cancer 1, early onset negative, low XRCC1, low SMUG1, high FEN1, high MIB1, p53 mutants, low MDM2, low Bcl-2, low p21, low Bax, high CDK1, and low Chk2 were also more frequent in tumors with low nuclear ATM level ($P_s < .05$). Low ATM protein level was significantly associated with poor survival including in patients with ER-negative tumors who received adjuvant anthracycline or cyclophosphamide, methotrexate, and 5-fluorouracil–based adjuvant chemotherapy ($P_s < .05$). Low nuclear Chk2 protein was likely in ER –/PR –/AR –; HER-2 positive; breast cancer 1, early onset negative; low XRCC1; low SMUG1; low APE1; low polβ; low DNA-PKcs; low ATM; low Bcl-2; and low TOPO2A tumors ($P < .05$). In patients with ER + tumors who received endocrine therapy or ER-negative tumors who received chemotherapy, nuclear Chk2 levels did not significantly influence survival. In p53 mutant tumors, low ATM ($P < .000001$) or high Chk2 ($P < .01$) was associated with poor survival. When investigated together, low-ATM/high-Chk2 tumors have the worst survival ($P = .0033$). Our data suggest that ATM-Chk2 levels in sporadic breast cancer may have prognostic and predictive significance.

Neoplasia (2014) 16, 982–991

Introduction

Ataxia–telegiectasia mutated (ATM), a member of the PI3K-like protein kinases family of serine threonine kinases, is a key player in the maintenance of genomic integrity [1–4]. ATM is activated and recruited to sites of double-strand breaks through the Mre11–Rad50–NBS1 complex. Activated ATM in turn phosphorylates a number of proteins involved in cellular homeostasis [1–4]. A key substrate of ATM is Chk2 whose phosphorylation at Thr68 results in activation

Address all correspondence to: Srinivasan Madhusudan, Academic Unit of Oncology, Division of Cancer and Stem Cells, School of Medicine, University of Nottingham, Nottingham University Hospitals, Nottingham NG5 1PB, UK.

E-mail: srinivasan.madhusudan@nottingham.ac.uk

¹ Conflict of interest: The authors declare no conflict of interest.

² A.A. and T.A.F. equally contributed to this work.

Received 31 July 2014; Revised 19 September 2014; Accepted 22 September 2014

© 2014 Neoplasia Press, Inc. Published by Elsevier Inc. This is an open access article under the CC BY-NC-ND license (<http://creativecommons.org/licenses/by-nc-nd/3.0/>).

1476-5586/14

<http://dx.doi.org/10.1016/j.neo.2014.09.009>

and in turn phosphorylation of a number of substrates such as p53, breast cancer 1, early onset (BRCA1), and others [5–9]. Proficient ATM-Chk2 signaling network is therefore essential for coordination of DNA repair, cell cycle progression, and apoptosis in response to DNA damage.

Accumulating evidence provides compelling evidence that germline mutations in *ATM*[10–13] and *Chk2*[14] may result in a predisposition to several tumors including hereditary breast cancers. In addition, in sporadic tumors, emerging data also suggest a role for *ATM* and *Chk2* somatic mutations in cancer development [10–14]. However, whether such somatic mutations or deregulation of protein expression has clinicopathological, prognostic, and predictive significance in sporadic breast cancer has not been clearly defined. In the current study, we have comprehensively investigated ATM and Chk2 in large cohorts of early-stage breast cancers. The data presented here suggest that impaired ATM-Chk2 pathway may influence the development of aggressive phenotypes that are associated with poor clinical outcomes in patients.

Patients and Methods

The Reporting Recommendations for Tumour Marker Prognostic Studies criteria, recommended by McShane et al. [15], were followed throughout this study. This work was approved by the Nottingham Research Ethics Committee.

Cohort 1

This is a consecutive series of 1650 patients with primary invasive breast carcinomas who were diagnosed between 1986 and 1999 and entered into the Nottingham Tenovus Primary Breast Carcinoma series. This is a well-characterized series of patients with long-term follow-up that have been investigated in a wide range of biomarker studies [16–21]. Supplementary Table S1 summarizes patient demographics, and supplementary treatment data 1 summarizes the various adjuvant treatment regimens received by patients in this group.

Cohort 2

An independent series of 252 estrogen receptor (ER)- α -negative invasive breast cancers diagnosed and managed at the Nottingham University Hospitals between 1999 and 2007 was also evaluated for ATM and Chk2 expression. All patients were primarily treated with surgery, followed by radiotherapy and anthracycline chemotherapy. The characteristics of this cohort are summarized in Supplementary Table S2.

Tissue Microarray (TMA) and Immunohistochemistry

TMA were constructed and immunohistochemically profiled for ATM, Chk2, and other biological antibodies. The optimization and specificity of the antibodies used in the current study have been described in previous publications [16–27] and listed in Supplementary Table S3. A set of slides was incubated for 18 hours at 4°C with the primary mouse monoclonal anti-ATM antibody, clone Y170 (Ab32420, Abcam, Cambridge, UK), at a dilution of 1:100. A further set of slides was incubated for 60 minutes with the primary rabbit polyclonal anti-Chk2 antibody (Ab47433, Abcam, Cambridge, UK) at a dilution of 1:100. To evaluate the use of TMAs for immunophenotyping, full-face sections of 40 cases were stained and protein expression levels of ATM and Chk2 were compared. The concordance between TMAs and full-face sections was excellent ($k = 0.8$). Positive and negative (by omission of the primary antibody and IgG-matched serum) controls were included in each run. Whole field

inspection of the core was scored, and intensities of nuclear staining were grouped as follows: 0 = no staining, 1 = weak staining, 2 = moderate staining, 3 = strong staining. The percentage of each category was estimated (0–100%). H-score (range 0–300) was calculated by multiplying intensity of staining and percentage staining. X-tile (version 3.6.1; Yale University, New Haven, CT) was used to identify a cutoff for ATM protein expression. The percentage of positive cells was used, with a cut off of <25% cells being classed as low and $\geq 25\%$ as high for nuclear ATM protein level. For Chk2 nuclear expression level, H-score cutoff was the median, and H-score of ≥ 100 was considered high for nuclear Chk2 expression. Not all cores within the TMA were suitable for immunohistochemistry analysis as some cores were missing or lacked tumor. Human epidermal growth factor receptor 2 (HER2) expression was assessed according to the new American Society of Clinical Oncology/The College of American Pathologists guidelines using chromogenic *in situ* hybridization [28].

Statistical Analyses

Data analysis was performed using SPSS (SPSS, version 17, Chicago, IL). Where appropriate, Pearson's Chi-square, Fisher's exact, χ^2 for trend, Student's t and analyses of variance one-way tests were performed using SPSS software (SPSS, version 17, Chicago, IL). Cumulative survival probabilities were estimated using the Kaplan-Meier method. Differences between survival rates were tested for significance using the log-rank test. Multivariate analysis for survival was performed using the Cox hazard model. The proportional hazards assumption was tested using standard log-log plots. Each variable was assessed in univariate analysis as a continuous and categorical variable, and the two models were compared using an appropriate likelihood ratio test. Hazard ratios and 95% confidence intervals (95% CI) were estimated for each variable. All tests were two-sided with a 95% CI. *P* values for each test were adjusted with Benjamini and Hochberg multiple *P* value adjustment, and an adjusted *P* value of $< .05$ was considered significant.

Molecular Taxonomy of Breast Cancer International Consortium (METABRIC) Cohort for mRNA Expression

The mRNA expression was performed in the METABRIC cohort. The METABRIC study protocol, detailing the molecular profiling methodology in a cohort of 1980 breast cancer samples, is described by Curtis et al. [29]. Patient demographics are summarized in Supplementary Table S4 of supporting information. ER-positive and/or lymph node-negative patients did not receive adjuvant chemotherapy. ER-negative and/or lymph node-positive patients received adjuvant chemotherapy. RNA was extracted from fresh frozen tumors and subjected to transcriptional profiling on the Illumina HT-12 v3 platform. The data were preprocessed and normalized as described previously [29], and gene expression was investigated in this data set. X-tile (version 3.6.1; Yale University, New Haven, CT) was used to identify a cutoff in gene expression values to divide the population in to high/low subgroups before analysis. Cumulative survival probabilities were estimated using the Kaplan-Meier method.

Breast Cancer Clines, Tissue Culture, and Western Blot Analysis

Supplementary Table S5 summarizes the molecular profile of breast cancer cells evaluated for ATM and Chk2 protein levels. MCF-7 (ER+/PR+/HER2-, BRCA1 proficient, PTEN proficient), MDA-MB-231 (ER-/PR-/HER2-, BRCA1 proficient, PTEN proficient), BT-549 (ER-/PR-/HER2-, BRCA1 proficient, PTEN deficient), MDA-

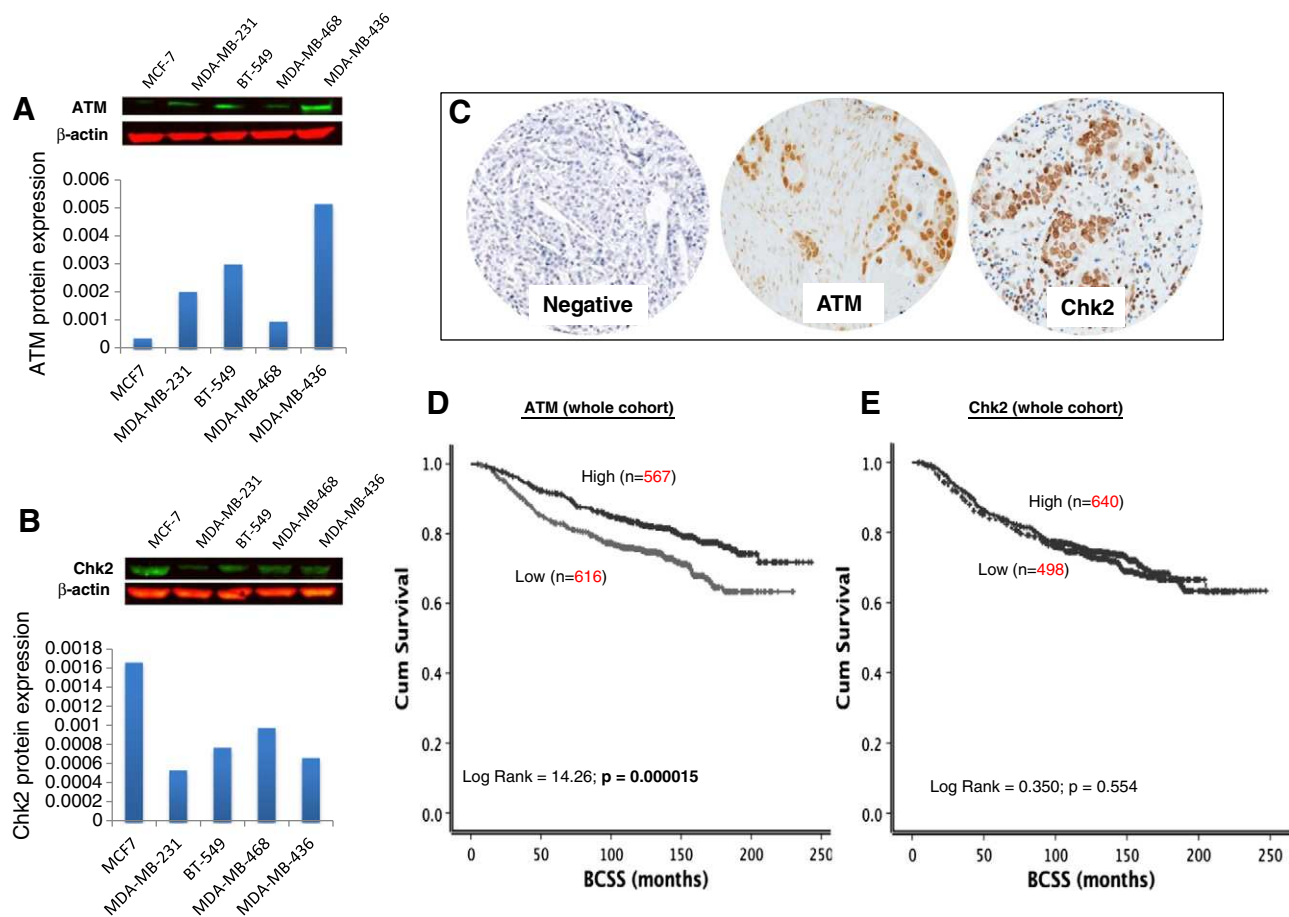


Figure 1. (A) Western blot of ATM expression in breast cancer cell lines. (B) Western blot of Chk2 expression in breast cancer cell lines. (C) Microphotograph of ATM and Chk2 negative and positive breast cancer tissue. (D) Kaplan-Meier curves showing BCSS and ATM level. (E) Kaplan-Meier curves showing BCSS and Chk2 level.

MB-468 (ER⁻/PR⁻/HER2⁻, BRCA1 proficient, PTEN deficient), and MDA-MB-436 (ER⁻/PR⁻/HER2⁻, BRCA1 deficient, PTEN deficient) were purchased from ATCC and were grown in RPMI (MCF-7, MDA-MB-231) or Dulbecco's modified Eagle's medium (BT-549, MDA-MB-468, and MDA-MB-436) with the addition of 10% fetal bovine serum and 1% penicillin/streptomycin. ATM-deficient HeLa SilenciX[®] cells and control ATM proficient HeLa SilenciX[®] cells were purchased from Tebu-Bio (www.tebu-bio.com). SilenciX cells were grown in Dulbecco's modified Eagle's medium (with L-glutamine 580 mg/l, 4500 mg/l D19 glucose, with 110 mg/l sodium pyruvate) supplemented with 10% fetal bovine serum, 1% penicillin/streptomycin, and 125 µg/ml Hygromycin B. Previously well-characterized CH lung fibroblast cells; V79 (ATM wild type), V-E5 (ATM deficient) were grown in Ham's F-10 media (PAA, UK) [supplemented with 10% fetal bovine serum (PAA,UK) and 1% penicillin/streptomycin]. Cell lysates were prepared, and Western blot analysis was performed. Primary antibodies were incubated overnight at room temperature [Chk2 1:250 dilution, ATM 1:1500 and β-actin 1:10,000 dilution (Abcam)]. Infrared dye-labeled secondary antibodies (Li-Cor) (IRDye 800CW Mouse Anti-Rabbit IgG and IRDye 680CW Rabbit Anti-Mouse IgG) were incubated at a dilution of 1:10,000 for 1 hour. Membranes were scanned with a Li-Cor Odyssey machine (700 and 800 nm) to determine protein expression. ATM or Chk2 expression was quantified after normalizing with β-actin.

Results

We initially profiled a panel of breast cancer cell lines for ATM and Chk2 protein expression. A wide spectrum of expression of ATM was evident across breast cancer cell lines (Figure 1A). MCF-7 has the lowest expression, whereas MDA-MB-436 has the highest ATM expression. MDA-MB-231, BT-549, and MDA-MB-468 exhibit reduced expression of ATM compared to MDA-MB-436. For Chk2 (Figure 1B), MCF7 has the highest Chk2 expression compared to MDA-MB-231, which has the lowest. BT-549, MDA-MB-436, and MDA-MB-468 have low Chk2 expression compared to MCF-7 cells. Together, the data reveal differential expression of ATM and Chk2 proteins in different breast cancer cell lines. To further evaluate the specificity of ATM antibody used in the current study, we performed Western blots in cell lysates from Chinese hamster lung fibroblasts [ATM deficient (V-E5 cells) and ATM proficient (V-79 cells)] and HeLa cells [ATM-deficient SilenciX cells where ATM has been knocked down by stable shRNA and ATM proficient control cells]. As shown in Supplementary Figure S1, ATM-proficient cells have robust ATM expression, and in ATM-deficient cells, there is no/minimal ATM expression. We then conducted immunohistochemical investigation of ATM and Chk2 expression in human breast tumor samples.

ATM Levels and Breast Cancer

A total of 1183 tumors were suitable for ATM analysis. High nuclear ATM level was seen in 567/1183 (48%) tumors compared to

Table 1. ATM Protein Level in Sporadic Breast Cancer

Variable	ATM Protein Expression		P Value
	Low N (%)	High N (%)	
A) Pathological parameters			
Tumor size			
<1 cm	87 (14.1)	76 (13.4)	.027
>1-2 cm	295 (47.9)	319 (56.3)	
>2-5 cm	218 (35.4)	161 (28.4)	
>5 cm	16 (2.6)	11 (1.9)	
Tumor stage			
1	399 (63.2)	386 (67.5)	.273
2	179 (28.4)	147 (25.7)	
3	53 (8.4)	39 (6.8)	
Tumor grade*			
G1	75 (12.2)	142 (25.0)	1.0 × 10⁻⁶
G2	202 (32.8)	190 (33.5)	
G3	339 (55.0)	235 (41.4)	
Mitotic index			
M1 (low; mitoses < 10)	190 (30.9)	253 (44.6)	3.0 × 10⁻⁶
M2 (medium; mitoses 10-18)	116 (18.9)	100 (17.6)	
M3 (high; mitosis > 18)	308 (50.2)	214 (37.7)	
Tubule formation			
1 (>75% of definite tubule)	37 (6.0)	42 (7.4)	1.1 × 10⁻⁵
2 (10%-75% definite tubule)	166 (27.0)	222 (39.2)	
3 (<10% definite tubule)	411 (66.9)	303 (53.4)	
Pleomorphism			
1 (small-regular uniform)	15 (2.4)	26 (4.6)	2.4 × 10⁻⁵
2 (moderate variation)	213 (34.7)	258 (45.5)	
3 (marked variation)	386 (62.9)	283 (49.9)	
Tumor type			
IDC-NST	337 (64.7)	271 (53.7)	1.0 × 10⁻⁴
Tubular carcinoma	79 (15.2)	133 (26.3)	
Medullary carcinoma	20 (3.8)	11 (2.2)	
ILC	48 (9.2)	50 (9.9)	
Others	37 (7.1)	40 (7.9)	
Lymphovascular invasion			
No	388 (65.2)	417 (74.5)	.001
Yes	207 (34.8)	143 (25.5)	
B) Aggressive phenotype			
Her2 overexpression			
No	506 (87.5)	487 (89.2)	.389
Yes	72 (12.5)	59 (10.8)	
Triple-negative phenotype			
No	459 (76.8)	476 (85.3)	2.2x10⁻⁴
Yes	139 (23.2)	82 (14.7)	
Basal-like phenotype			
No	494 (85.0)	487 (89.0)	.046
Yes	87 (15.0)	60 (11.0)	
CK6			
Negative	424 (83.3)	404 (80.8)	.301
Positive	87 (16.7)	96 (19.2)	
CK14			
Negative	451 (88.8)	424 (84.8)	.062
Positive	87 (11.2)	76 (15.2)	
CK18			
Negative	73 (14.6)	31 (6.8)	1.1 × 10⁻⁴
Positive	428 (85.4)	424 (93.2)	
CK19			
Negative	46 (9.0)	16 (3.2)	1.2 × 10⁻⁴
Positive	463 (91.0)	480 (96.8)	
C) Hormone receptors			
ER			
Negative	207 (33.4)	126 (22.3)	1.9 × 10⁻⁵
Positive	412 (66.6)	440 (77.7)	
PgR			
Negative	271 (48.1)	190 (36.3)	7.5 × 10⁻⁵
Positive	292 (51.9)	334 (63.7)	
AR			
Negative	212 (43.5)	144 (30.8)	4.6 × 10⁻⁵
Positive	275 (56.5)	324 (69.2)	
D) DNA repair			
BRCA1			
Absent	110 (24.8)	50 (12.3)	3.0 × 10⁻⁶
Normal	333 (75.2)	358 (87.7)	

TABLE 1 (continued)

Variable	ATM Protein Expression		P Value
	Low N (%)	High N (%)	
XRCC1			
Low	81 (19.4)	43 (11.4)	.002
High	336 (80.6)	334 (88.6)	
FEN1			
Low	301 (75.8)	241 (68.1)	.018
High	96 (24.2)	113 (31.9)	
SMUG1			
Low	173 (47.1)	97 (29.4)	2.0 × 10⁻⁶
High	194 (52.9)	233 (70.6)	
APE1			
Low	215 (52.7)	173 (47.5)	.152
High	193 (47.3)	191 (52.5)	
PolB			
Low	178 (40.1)	148 (38.3)	.607
High	266 (59.5)	238 (61.7)	
DNA-PKcs			
Low	138 (35.9)	116 (35.7)	.946
High	246 (64.1)	209 (64.3)	
E) Cell cycle/apoptosis regulators			
P16			
Low	358 (83.4)	354 (87.0)	.151
High	71 (16.6)	53 (13.0)	
P21			
Low	274 (63.7)	235 (53.5)	.002
High	156 (36.3)	204 (46.5)	
MIB1			
Low	222 (44.7)	266 (55.8)	.001
High	275 (55.3)	211 (44.2)	
P53			
Low expression	379 (56.7)	393 (82.2)	.034
High expression	115 (23.3)	85 (17.8)	
Bcl-2			
Negative	209 (39.6)	153 (30.4)	.002
Positive	319 (60.4)	351 (69.6)	
TOP2A			
Low	195 (46.9)	161 (42.7)	.238
Overexpression	221 (53.1)	216 (57.3)	
CHK2			
Low	329 (92.2)	255 (85.9)	.009
High	28 (7.8)	42 (14.1)	
Bax			
Low	252 (72.2)	189 (62.8)	.010
High	97 (27.8)	111 (37.2)	
CDK1			
Low	204 (65.8)	200 (75.8)	.009
High	106 (34.2)	64 (24.2)	
MDM2			
Low	353 (81.3)	280 (63.3)	1.0 × 10⁻⁶
Overexpression	81 (18.7)	162 (36.7)	

Bold = statistically significant; PgR: progesterone receptor; CK: cytokeratin; Basal-like: ER-, HER2, and positive expression of either CK5/6, CK14, or EGFR; Triple negative: ER-/PgR-/HER2-.

* Grade as defined by Nottingham Grading System.

616/1183 (52%) tumors that had low nuclear ATM level (Figure 1C) (Table 1). Low nuclear ATM level was associated with larger tumors ($P = .027$), higher tumor grade ($P < .001$), higher mitotic index ($P < .001$), pleomorphism ($P < .001$), tumor type ($P < .001$), and lymphovascular invasion ($P = .001$) (Table 1). Triple-negative ($P < .001$) and basal-like phenotype ($P = .046$) breast cancers were more commonly low nuclear ATM tumors. ER-, PR-, and AR- were also more common in low-nuclear ATM tumors ($P < .001$). BRCA1 negative, low XRCC1, low SMUG1, and low FEN1 were also more likely associated with low ATM level in tumors ($P < .05$). In addition, high MIB1, p53 mutants, low MDM2, Bcl-2 mutants, low p21, low Bax, high CDK1, and low Chk2 were likely in tumors with low nuclear ATM levels ($P < .05$).

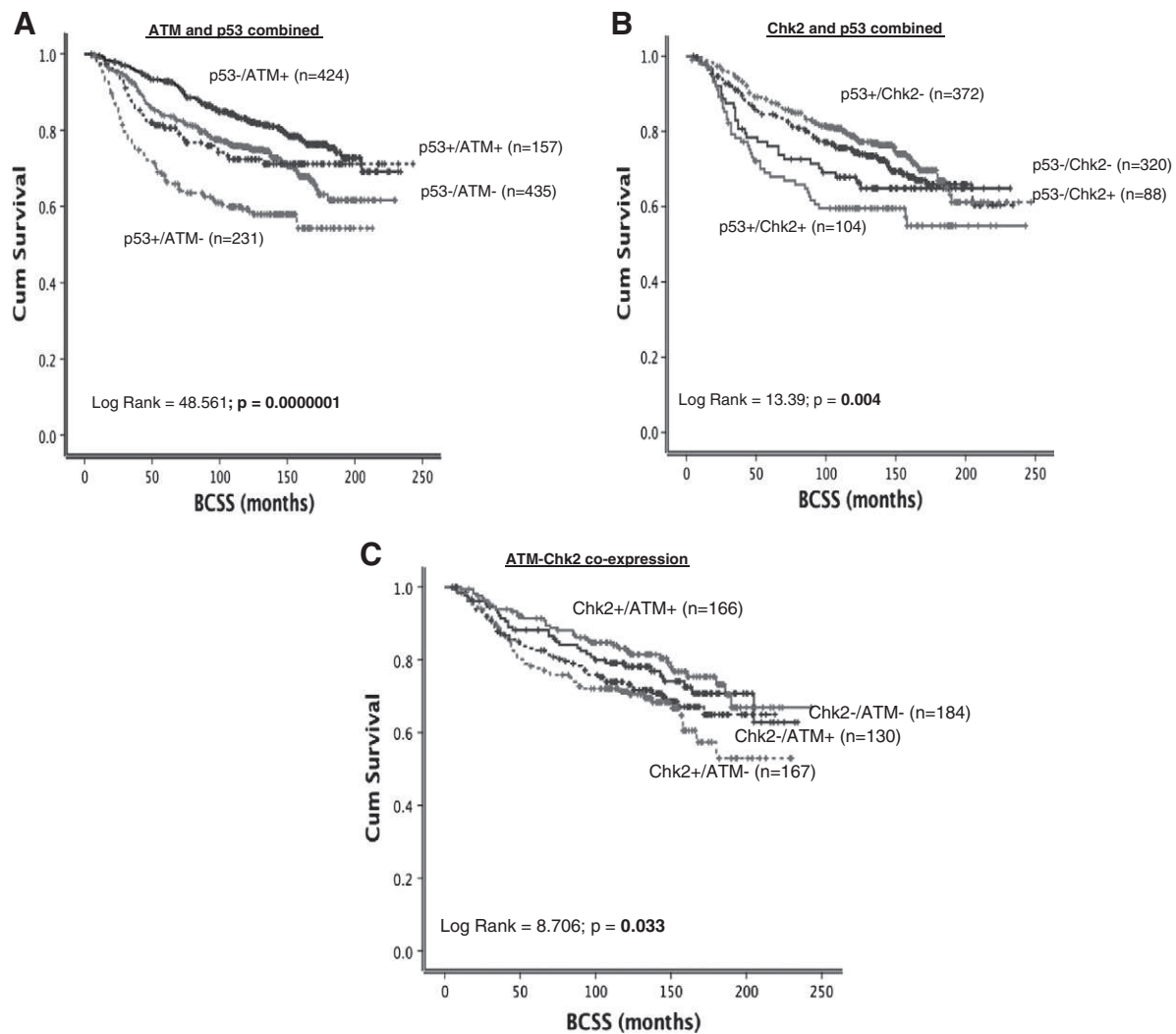


Figure 2. (A) Kaplan-Meier curves showing BCSS stratified based on p53 mutation status and ATM level. (B) Kaplan-Meier curves showing BCSS stratified based on p53 mutation status and Chk2 level. (C) Kaplan-Meier curves showing BCSS stratified based on ATM and Chk2 coexpression.

Low ATM level was associated with worse breast cancer–specific survival (BCSS) in patients ($P < .0001$) (Figure 1D). As ATM mediated activation and stabilization of p53 are essential for genomic stability and cell cycle response, we conducted exploratory analysis in p53 mutant and proficient tumors. p53 mutants with low ATM levels have the worst survival compared to p53 wild-type tumors with high ATM levels ($P < .0001$) (Figure 2A). Tumors that are p53 mutants with high ATM levels and p53 wild type with low ATM levels have intermediate prognosis. We then investigated in ER+ and ER– subgroups. ER+ tumors were from cohort 1. For ER–negative tumors, we combined tumors from cohort 1 and cohort 2 for the subgroup analysis. In high-risk (NPI > 3.4) ER–negative tumors that received no adjuvant chemotherapy, low ATM was associated with poor survival ($P = .041$) (Supplementary Figure S2A). In high-risk ER–negative tumors that received anthracycline (Figure 3A) or cyclophosphamide, methotrexate, and 5-fluorouracil (CMF) adjuvant chemotherapy (Figure 3B), low ATM remains associated with poor survival ($P = .030$ and $P = .021$, respectively). In ER+ tumors, ATM level did not significantly influence clinical outcomes (Figure 2C and Supplementary Figure S2B). At the mRNA level, low ATM was seen

in 10% of tumors (202/1977). Although there was a trend, low ATM expression was not significantly associated with poor BCSS in the whole cohort ($P = .080$, Figure 3D) and in the ER– cohort that received chemotherapy ($P = .065$, Figure 3E). Interestingly, low ATM expression was significantly associated with poor BCSS in the ER+ cohort that received endocrine therapy ($P = .020$, Figure 3F).

Chk2 Levels and Breast Cancer

A total of 1138 tumors were suitable for Chk2 analysis. High nuclear Chk2 level was seen in 640/1138 (56%) tumors compared to 498/1138 (44%) tumors that had low nuclear Chk2 level (Figure 1C) (Table 2). Low nuclear Chk2 was likely in HER-2–overexpressing tumors. ER–/PR–/AR– tumors were also more likely in tumors with low nuclear Chk2 levels. BRCA1 negative, XRCC1 low, FEN1 low, SMUG1 low, APE1 low, polβ low, DNA-PKcs low, ATM low, Bcl-2 low, TOPO2A low, and MDM2 low tumors were more likely in tumors with low nuclear Chk2 levels ($P < .05$) (Table 2). In the whole cohort, there was no significant association with BCSS (Figure 1E). However, when stratified based on p53 mutation status, p53 mutants with high nuclear Chk2 appear to have poor outcome compared to

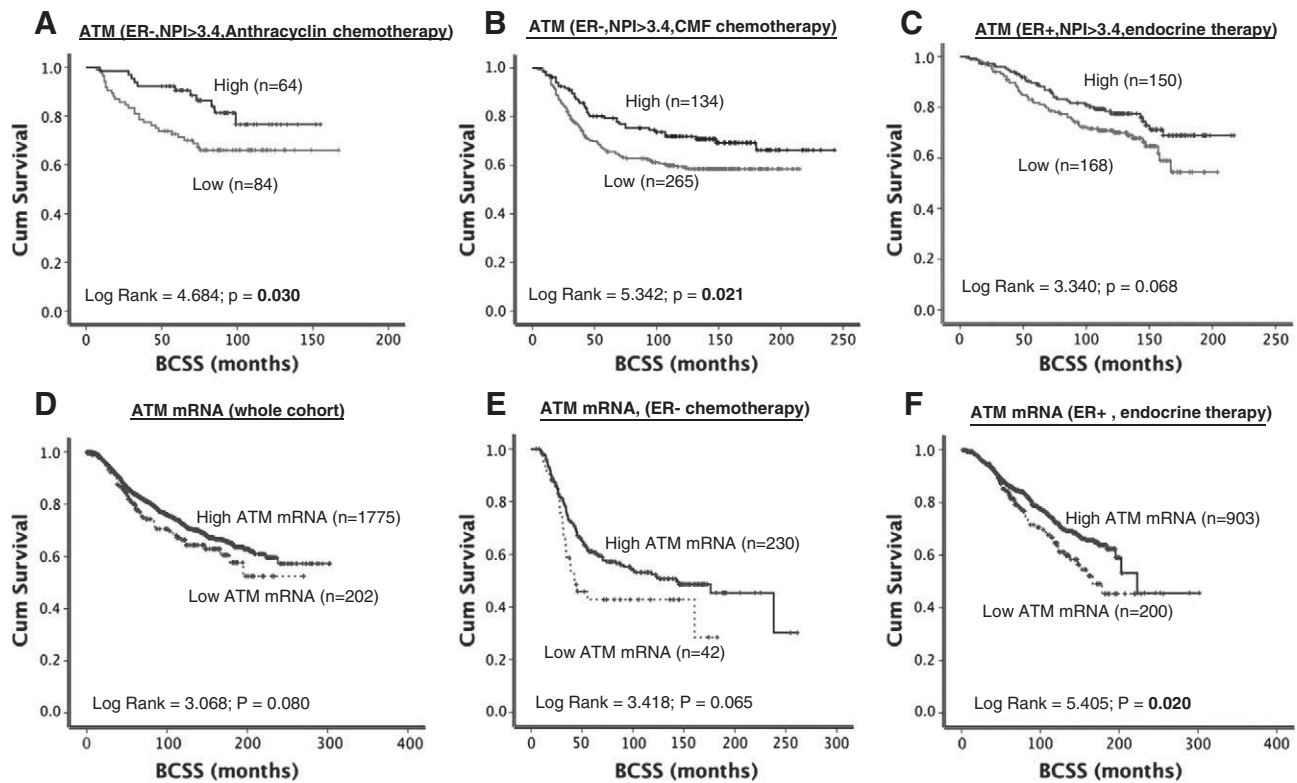


Figure 3. (A) Kaplan-Meier curves showing BCSS based on ATM levels in ER – patients who received anthracycline chemotherapy. (B) Kaplan-Meier curves showing BCSS based on ATM levels in ER – patients who received CMF chemotherapy. (C) Kaplan-Meier curves showing BCSS based on ATM levels in ER + patients who received endocrine therapy. (D) Kaplan-Meier curves showing BCSS based on *ATM* mRNA expression in the whole cohort. (E) Kaplan-Meier curves showing BCSS based on *ATM* mRNA expression in ER – patients who received chemotherapy. (F) Kaplan-Meier curves showing BCSS based on *ATM* mRNA expression in ER + patients who received endocrine therapy.

p53 mutants with low nuclear Chk2 levels ($P = .004$) (Figure 2B). We also performed subgroup analysis based on ER status in tumors. In ER – tumors that received no adjuvant chemotherapy, high nuclear Chk2 was associated with poor survival ($P = .047$) (Supplementary Figure S2C). However, in ER+ tumors that received no adjuvant endocrine therapy, low nuclear Chk2 was associated with poor survival ($P = .014$) (Supplementary Figure S2D). In patients with ER+ tumors who received endocrine therapy or ER-negative tumors who received chemotherapy, nuclear Chk2 levels did not significantly influence clinical outcome (Figure 4A, B, and C). At the mRNA level, high *Chk2* expression was significantly associated with poor BCSS in the whole cohort ($P < .001$, Figure 4D) and in the ER+ cohort that received endocrine therapy ($P = .006$, Figure 4F). However, low *Chk2* expression was significantly associated with poor BCSS in the ER – cohort that received chemotherapy ($P = .020$, Figure 4E).

ATM-Chk2 Coexpression in Breast Cancer

As there was a strong positive association between ATM and Chk2 expression (see Table 1 and Table 2), we investigated if coexpression would influence survival. Patients with tumors that have low ATM and high Chk2 levels have the worst survival compared to tumors that have high ATM and high Chk2 levels ($P = .033$) (Figure 2C). The data suggest that ATM and Chk2 together have prognostic significance in patients. We then investigated in patients who received chemotherapy or endocrine therapy. As shown in Supplementary Figure S3, although there was trend, ATM-Chk2

expression did not significantly influence survival in patients in the various subgroups.

Multivariate Analysis

To investigate whether ATM-Chk2 independently influenced survival, we proceeded to multivariate analysis. As shown in Table 3, in multivariate Cox regression analysis including other validated prognostic factors (such as stage, histological grade, tumor size, p53, MIB1, and bcl-2), Chk2 expression was an independent predictor for BCSS. ATM-Chk2 coexpression showed a trend and reached near significance ($P = .056$).

Taken together, the data provide evidence that ATM and Chk2 expression has prognostic and predictive significance in breast cancer.

Discussion

This is the largest study to investigate the clinicopathological significance of ATM-Chk2 expression in sporadic breast cancers. A low level of ATM was associated with aggressive phenotypes including high grade, high mitotic index, pleomorphisms, de-differentiation, and triple-negative and basal-like phenotypes. The association between ER negativity and low ATM in human tumors concurs with the breast cancer cell line data where ATM was found to be low in several triple-negative cell lines including MDA-MB-231, BT-549, and MDA-MB-468 cells. ATM is a key player in the maintenance of genomic integrity [1–4]. Loss of ATM and the resulting genomic instability may promote a mutator phenotype

Table 2. Chk2 Protein Level in Sporadic Breast Cancers

Variable	Chk2 Protein Expression		P Value
	Low N (%)	High N (%)	
A) Pathological parameters			
Tumor size			.483
<1 cm	43 (8.6)	111 (10.1)	
>1-2 cm	250 (50.2)	290 (48.3)	
>2-5 cm	190 (38.2)	224 (37.5)	
>5 cm	15 (3.0)	15 (2.5)	
Tumor stage			.441
1	302 (60.4)	383 (64.2)	
2	151 (30.2)	163 (27.3)	
3	47 (9.4)	51 (8.5)	
Tumor grade*			.144
G2	140 (28.1)	192 (32.2)	
G3	294 (59.0)	317 (53.1)	
Mitotic index			.241
M1 (low; mitoses < 10)	144 (29.0)	188 (31.6)	
M2 (medium; mitoses 10-18)	88 (17.7)	120 (20.2)	
M3 (high; mitosis > 18)	264 (53.2)	286 (48.1)	
Tubule formation			.912
1 (>75% of definite tubule)	21 (4.2)	23 (3.9)	
2 (10%-75% definite tubule)	153 (30.8)	189 (31.8)	
3 (<10% definite tubule)	322 (64.9)	382 (64.3)	
Pleomorphism			.070
1 (small-regular uniform)	11 (2.2)	12 (2.0)	
2 (moderate variation)	151 (30.4)	220 (37.1)	
3 (marked variation)	334 (67.3)	361 (60.9)	
Tumor type			.235
IDC-NST	274 (62.7)	325 (63.5)	
Tubular carcinoma	77 (17.6)	90 (17.6)	
Medullary carcinoma	18 (4.1)	9 (1.8)	
ILC	30 (6.9)	44 (8.6)	
Others	38 (8.7)	44 (8.6)	
Lymphovascular invasion			.282
No	315 (64.3)	397 (67.4)	
Yes	175 (35.7)	192 (32.6)	
B) Aggressive phenotype			
Her2 overexpression			.017
No	410 (84.2)	518 (89.2)	
Yes	77 (15.8)	63 (10.8)	
Triple-negative phenotype			.140
No	379 (78.0)	475 (81.6)	
Yes	107 (22.0)	107 (18.4)	
Basal-like phenotype			.410
No	400 (85.5)	492 (87.2)	
Yes	68 (14.5)	72 (12.8)	
CK6			.970
Negative	353 (83.1)	414 (83.0)	
Positive	72 (16.9)	85 (17.0)	
CK14			.566
Negative	368 (86.6)	434 (87.9)	
Positive	57 (13.4)	60 (12.1)	
CK18			.271
Negative	49 (12.3)	46 (10.0)	
Positive	348 (87.7)	415 (90.0)	
CK19			.478
Negative	28 (6.7)	39 (7.9)	
Positive	392 (93.3)	455 (92.1)	
C) Hormone receptors			
ER			.008
Negative	163 (33.1)	151 (25.7)	
Positive	330 (66.9)	437 (74.3)	
PgR			.006
Negative	232 (49.3)	225 (40.7)	
Positive	239 (50.7)	328 (59.3)	
AR			.002
Negative	181 (45.5)	165 (35.0)	
Positive	217 (54.5)	306 (65.0)	
D) DNA repair			
BRCA1			2.1×10^{-4}
Absent	101 (27.7)	69 (16.7)	
Normal	263 (72.3)	343 (83.3)	

TABLE 2 (continued)

Variable	Chk2 Protein Expression		P Value
	Low N (%)	High N (%)	
XRCC1			2.2×10^{-4}
Low	86 (22.9)	54 (12.9)	
High	289 (77.1)	364 (87.1)	
FEN1			2.1×10^{-4}
Low	287 (81.3)	272 (69.6)	
High	147 (18.7)	119 (30.4)	
SMUG1			.003
Low	155 (46.8)	131 (35.6)	
High	176 (53.2)	237 (64.4)	
APE1			1.0×10^{-6}
Low	320 (68.7)	220 (38.9)	
High	146 (31.3)	346 (61.1)	
PolB			1.0×10^{-6}
Low	226 (48.9)	173 (30.8)	
High	236 (51.5)	388 (69.2)	
ATM			.026
Low	188 (59.1)	170 (50.4)	
High	130 (40.9)	167 (49.6)	
DNA-PKcs			1.0×10^{-6}
Low	187 (45.2)	134 (29.5)	
High	226 (54.7)	321 (70.5)	
E) Cell cycle/apoptosis regulators			
P16			.187
Low	294 (83.1)	352 (86.5)	
High	60 (16.9)	55 (13.5)	
P21			.192
Low	227 (61.5)	238 (56.9)	
High	142 (38.5)	180 (43.1)	
MIB1			.405
Low	164 (40.6)	218 (43.3)	
High	240 (59.4)	285 (56.7)	
p53			0.856
Low expression	322 (78.5)	373 (78.0)	
High expression	88 (21.5)	105 (22.0)	
Bcl-2			.002
Negative	194 (43.3)	176 (33.6)	
Positive	254 (56.7)	348 (66.4)	
TOP2A			1.8×10^{-5}
Low	195 (53.7)	166 (38.5)	
Overexpression	168 (46.3)	265 (61.5)	
Bax			.435
Low	200 (69.7)	248 (72.5)	
High	87 (30.3)	94 (27.5)	
CDK1			.547
Low	278 (69.8)	292 (67.9)	
High	120 (30.2)	138 (32.1)	
MDM2			.001
Low	279 (90.6)	299 (81.7)	
Overexpression	29 (9.4)	67 (18.3)	

Bold = statistically significant.
* Grade as defined by Nottingham Grading System.

which is characterized by accelerated accumulation of mutations that ultimately drive an aggressive cancerous phenotype. Herein we demonstrate that, at the protein level, low ATM expression was associated with high grade, high mitotic index, de-differentiation, and pleomorphism. The hypothesis that low ATM is associated with genomic instability is further supported by the observation that low ATM was significantly associated with low expression of other DNA repair factors including BRCA1, XRCC1, FEN1, and SMUG1. Moreover, as low ATM tumors were also more likely to be p53 mutants, we speculate that this could contribute to additional genomic instability in tumors. In addition, not only was low ATM level significantly associated with mutant p53 status, but low-ATM/p53 mutants also have the worst survival compared to p53 wild-type/high-ATM tumors. The data suggest that ATM/p53-based stratification could be useful for personalization of therapy. A previous small study in 93 breast cancers suggested that tumors with normal ATM

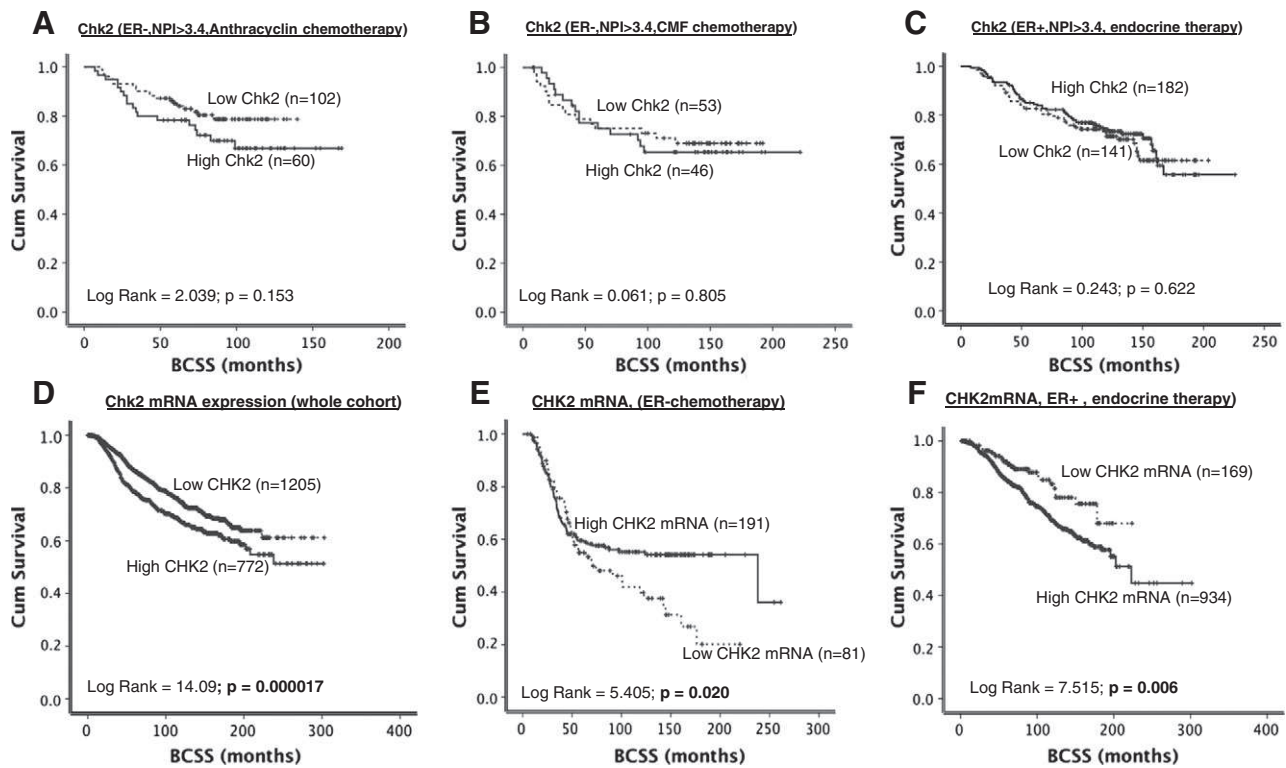


Figure 4. (A) Kaplan-Meier curves showing BCSS based on Chk2 levels in ER – patients who received anthracycline chemotherapy. (B) Kaplan-Meier curves showing BCSS based on Chk2 levels in ER – patients who received CMF chemotherapy. (C) Kaplan-Meier curves showing BCSS based on Chk2 levels in ER + patients who received endocrine therapy. (D) Kaplan-Meier curves showing BCSS based on *Chk2* mRNA expression in the whole cohort. (E) Kaplan-Meier curves showing BCSS based on *Chk2* mRNA expression in ER – patients who received chemotherapy. (F) Kaplan-Meier curves showing BCSS based on *Chk2* mRNA expression in ER + patients who received endocrine therapy.

and wild-type p53 have good prognosis, whereas tumors with low ATM and wild-type p53 have poor survival [30]. The authors described only four tumors that had both low ATM and aberrant p53, and this was associated with good survival in that study [30]. In contrast, in our study, 231 tumors were p53 mutants with low ATM, and such tumors exhibited poor survival. Interestingly, in patients who received either anthracycline-based or CMF adjuvant chemotherapy, low ATM level was associated with poor survival, implying that ATM may also predict response to chemotherapy. The data appear to be counterintuitive in that several preclinical studies have suggested that ATM-deficient cells are sensitive to cytotoxic chemotherapy and radiotherapy [1–4]. However, our data would concur with a recent report in breast cancers that showed a poor survival in patients with low ATM who received adjuvant/neoadjuvant chemotherapy [31]. Similarly, Knappskog et al., also showed that low ATM predicts resistance to anthracycline chemotherapy in breast cancer [32]. To investigate whether low ATM expression is due to low mRNA expression, we investigated the METABRIC cohort and again demonstrated that low *ATM* mRNA expression was associated with adverse clinical outcome in patients. Whether *ATM* gene copy number changes, mutational changes, or posttranscriptional miRNA-mediated regulation of *ATM* mRNA expression contributes to the low ATM seen in our study is not known. Interestingly, Bueno et al., demonstrated that ATM copy number loss (seen in 12% of breast tumors) and miR-421 overexpression (seen in 36.5% of breast tumors) were associated

with ATM loss, thereby providing some mechanistic evidence for ATM regulation [31]. In contrast, Guo et al., who investigated 296 breast tumors in Chinese patients [33] observed high ATM levels in ER– tumors. However, the authors did not describe any association between ATM level and BCSS in that study. However, two previous studies in white patients demonstrate that low ATM level may be associated with aggressive phenotype and poor survival [31,34]. Tommiska et al., investigated in observed that low ATM was common in BRCA1/BRCA2 deficient tumors as well as ER– tumors [34]. In a further study in white patients by Bueno et al., low ATM in white tumors was shown to be associated with poor prognosis [31]. Similarly, in the current study, in white patients with breast tumors, we observed that low ATM protein level was associated with aggressive clinicopathological features and poor survival in ER– tumors. Taken together, the data suggest that, in white patients, low ATM appears to be a poor prognostic biomarker. The data presented in white tumors is in contrast to Guo et al. [33], and may be accounted by either racial differences in tumor biology or different immunohistochemical protocols used across different studies. Preclinically, Guo et al., showed that ER activates miR-18a and miR-106a, which in turn downregulate ATM in cancer cell lines as well as in ER– tumors [33]. In contrast, Bueno et al., observed that miR-421 was overexpressed and correlated to low ATM levels [31]. Together, the data suggest that the regulation of ATM expression by miRNAs may be complex *in vivo*. Further mechanistic studies are required to clarify the role of miRNA in the regulation of ATM

Table 3. Multivariate Analysis

	P Value	Exp (B)	95% CI of Exp (B)	
			Lower	Upper
BCSS				
Stage	.001	1.810	1.413	2.320
Grade	.065	1.402	0.979	2.009
Size	.009	1.250	1.057	1.478
ATM	.307	1.226	0.829	1.812
Chk2	.030	1.465	1.037	2.069
ATM-CHK2 coexpression	.056	0.847	0.715	1.004
p53	.559	1.130	0.750	1.705
Bcl-2	.001	0.443	0.301	0.653
ER	.371	1.221	0.788	1.893
Her2	.399	1.099	0.883	1.362
MIB1	.340	1.106	0.899	1.361

expression. Moreover, the data presented would also concur with studies in colorectal cancer [35] and chronic lymphocytic leukemia [36] where low ATM level has been shown to be a poor prognostic biomarker. Taken together, the data provide compelling evidence for the role of low ATM expression in promoting aggressive breast cancer. Whether such ATM-deficient tumors can be targeted by synthetic lethality approaches has been investigated recently. In lymphoid tumors, PARP inhibition was synthetically lethal in ATM-deficient cells [37]. Similarly, in breast and gastric cancer cell line, models of synthetic lethality with PARP inhibition have been demonstrated [38,39]. Using a similar approach, we have recently demonstrated that ATM-deficient cells are sensitive to inhibitors of APE1, a key player in base excision repair [40]. Given the recent clinical success of PARP inhibitors in BRCA1/2-deficient breast and ovarian cancers [41], whether a similar clinical approach would be feasible in ATM-deficient breast cancer clearly needs investigation in prospective clinical trials. The role of Chk2 in sporadic breast cancer appears to be more complex than ATM. In the current study, low nuclear Chk2 protein level was associated with ER-/PR-/AR-tumors. Moreover, low nuclear Chk2 level was also associated with low levels of several DNA repair factors including BRCA1, XRCC1, and APE1, implying increased genomic instability in tumors that have low nuclear Chk2. In a previous small study of 100 breast cancers, low Chk2 was reported to be associated with advanced stage but not with survival [42]. Similarly, in another study of 611 breast cancers [43], low Chk2 was reported in 21.1% of tumors and was associated with larger tumor size but again not associated with survival. In the current study, although we did not observe any correlation with stage, in ER+ tumors that received no endocrine therapy, low Chk2 was associated with poor survival, suggesting that Chk2 may still have prognostic significance in ER+ tumors. However, high Chk2 level was associated with poor survival in ER-negative tumors that received no chemotherapy in our study. Interestingly, p53 mutation status may influence the prognostic impact of Chk2; p53 mutants with high Chk2 have the worst survival, and p53 mutants with low Chk2 appear to have the best survival. Given that Chk2 is a key activator of p53 [44] and that combined inactivation of p53 and Chk2 has been reported in breast cancers [45], detailed mechanistic preclinical investigations are required to understand the complex functional link between Chk2 and p53 in breast tumors. Although Chk2 appeared to have prognostic significance, Chk2 protein level was not associated with survival in patients who received chemotherapy or endocrine therapy,

suggesting that Chk2 is unlikely to be a predictive factor in breast cancers. To complicate the matter further, we observed the reverse at the mRNA level in breast tumors. Low Chk2 mRNA was associated with poor survival in ER-negative tumors that received chemotherapy, but high Chk2 mRNA was associated with poor survival in ER+ tumors that received endocrine therapy. These new unexplained observations suggest that further studies are required to clarify the role of Chk2 in sporadic breast cancers. When ATM and Chk2 were investigated together, we found that tumors with low ATM/high Chk2 had the worst survival compared to those with high ATM/high Chk2 levels. However, limitations to our study are that it was retrospective and did not investigate the functional status of ATM-Chk2 pathway as assessed, for example, by expression of phosphorylated Chk2 and other ATM substrates.

In conclusion, we provide evidence that ATM-Chk2 pathway is a promising biomarker in breast cancer.

Appendix A. Supplementary data

Supplementary data to this article can be found online at <http://dx.doi.org/10.1016/j.neo.2014.09.009>.

References

- Shiloh Y and Ziv Y (2013). The ATM protein kinase: regulating the cellular response to genotoxic stress, and more *Nature reviews. Mol Cell Biol* **14**, 197–210.
- Marechal A and Zou L (2013). DNA damage sensing by the ATM and ATR kinases. *Cold Spring Harb Perspect Biol* **5** [pii: a012716].
- Ambrose M and Gatti RA (2013). Pathogenesis of ataxia-telangiectasia: the next generation of ATM functions. *Blood* **121**, 4036–4045.
- Ditch S and Paull TT (2012). The ATM protein kinase and cellular redox signaling: beyond the DNA damage response. *Trends Biochem Sci* **37**, 15–22.
- Smith J, Tho LM, Xu N, and Gillespie DA (2010). The ATM-Chk2 and ATR-Chk1 pathways in DNA damage signaling and cancer. *Adv Cancer Res* **108**, 73–112.
- Antoni L, Sodha N, Collins I, and Garrett MD (2007). CHK2 kinase: cancer susceptibility and cancer therapy — two sides of the same coin? *Nature reviews. Cancer* **7**, 925–936.
- Ahn J, Urist M, and Prives C (2004). The Chk2 protein kinase. *DNA Repair* **3**, 1039–1047.
- Bartek J and Lukas J (2003). Chk1 and Chk2 kinases in checkpoint control and cancer. *Cancer Cell* **3**, 421–429.
- McGowan CH (2002). CHK2: a tumor suppressor or not? *Cell Cycle* **1**, 401–403.
- Prokopcova J, Kleibl Z, Banwell CM, and Pohlreich P (2007). The role of ATM in breast cancer development. *Breast Cancer Res Treat* **104**, 121–128.
- Ahmed M and Rahman N (2006). ATM and breast cancer susceptibility. *Oncogene* **25**, 5906–5911.
- Khanna KK and Chenevix-Trench G (2004). ATM and genome maintenance: defining its role in breast cancer susceptibility. *J Mammary Gland Biol Neoplasia* **9**, 247–262.
- Angele S and Hall J (2000). The ATM gene and breast cancer: is it really a risk factor? *Mutat Res* **462**, 167–178.
- Nevanlinna H and Bartek J (2006). The CHEK2 gene and inherited breast cancer susceptibility. *Oncogene* **25**, 5912–5919.
- McShane LM, Altman DG, Sauerbrei W, Taube SE, Gion M, and Clark GM (2005). Reporting recommendations for tumor marker prognostic studies (REMARK). *J Natl Cancer Inst* **97**, 1180–1184.
- Abdel-Fatah T, Arora A, Agarwal D, Moseley P, Perry C, Thompson N, Green AR, Rakhia E, Chan S, and Ball G, et al (2014). Adverse prognostic and predictive significance of low DNA-dependent protein kinase catalytic subunit (DNA-PKcs) expression in early-stage breast cancers. *Breast Cancer Res Treat* **146**, 309–320.
- Abdel-Fatah TM, Russell R, Albarakati N, Maloney DJ, Dorjsuren D, Rueda OM, Moseley P, Mohan V, Sun H, and Abbotts R, et al (2014). Genomic and protein expression analysis reveals flap endonuclease 1 (FEN1) as a key biomarker in breast and ovarian cancer. *Mol Oncol* [pii: S1574-7891(14)00092-1].

- [18] Abdel-Fatah TM, Russell R, Agarwal D, Moseley P, Abayomi MA, Perry C, Albarakati N, Ball G, Chan S, and Caldas C, et al (2014). DNA polymerase beta deficiency is linked to aggressive breast cancer: a comprehensive analysis of gene copy number, mRNA and protein expression in multiple cohorts. *Mol Oncol* **8**, 520–532.
- [19] Abdel-Fatah TM, Perry C, Moseley P, Johnson K, Arora A, Chan S, Ellis IO, and Madhusudan S (2014). Clinicopathological significance of human apurinic/apyrimidinic endonuclease 1 (APE1) expression in oestrogen-receptor-positive breast cancer. *Breast Cancer Res Treat* **143**, 411–421.
- [20] Abdel-Fatah TM, Albarakati N, Bowell L, Agarwal D, Moseley P, Hawkes C, Ball G, Chan S, Ellis IO, and Madhusudan S (2013). Single-strand selective monofunctional uracil-DNA glycosylase (SMUG1) deficiency is linked to aggressive breast cancer and predicts response to adjuvant therapy. *Breast Cancer Res Treat* **142**, 515–527.
- [21] Sultana R, Abdel-Fatah T, Abbotts R, Hawkes C, Albarakati N, Seedhouse C, Ball G, Chan S, Rakha EA, and Ellis IO, et al (2013). Targeting XRCC1 deficiency in breast cancer for personalized therapy. *Cancer Res* **73**, 1621–1634.
- [22] Abdel-Fatah TM, Perry C, Arora A, Thompson N, Doherty R, Moseley PM, Green AR, Chan SY, Ellis IO, and Madhusudan S (2014 Sept 22). Is there a role for base excision repair in estrogen / estrogen receptor driven breast cancers? *Antioxid Redox Signal*. [Epub ahead of print].
- [23] Albarakati N, Abdel-Fatah TM, Doherty R, Russell R, Agarwal D, Moseley P, Perry C, Arora A, Alsubhi N, and Seedhouse C, et al (2014). Targeting BRCA1-BER deficient breast cancer by ATM or DNA-PKcs blockade either alone or in combination with cisplatin for personalized therapy. *Mol Oncol* **14**, 309–320.
- [24] Abdel-Fatah TM, Perry C, Dickinson P, Ball G, Moseley P, Madhusudan S, Ellis IO, and Chan SY (2013). Bcl2 is an independent prognostic marker of triple negative breast cancer (TNBC) and predicts response to anthracycline combination (ATC) chemotherapy (CT) in adjuvant and neoadjuvant settings. *Ann Oncol* **24**, 2801–2807.
- [25] Abdel-Fatah TM, Powe DG, Agboola J, Adamowicz-Brice M, Blamey RW, Lopez-Garcia MA, Green AR, Reis-Filho JS, and Ellis IO (2010). The biological, clinical and prognostic implications of p53 transcriptional pathways in breast cancers. *J Pathol* **220**, 419–434.
- [26] Abdel-Fatah TM, Powe DG, Ball G, Lopez-Garcia MA, Habashy HO, Green AR, Reis-Filho JS, and Ellis IO (2010). Proposal for a modified grading system based on mitotic index and Bcl2 provides objective determination of clinical outcome for patients with breast cancer. *J Pathol* **222**, 388–399.
- [27] Abdel-Fatah TMA, Middleton F, Arora A, Moseley P, Agarwal D, Perry C, Chan S, Green A, Ball G, and Ellis IO, et al (2014). Untangling the ATR-Chk1 network for prognostication, prediction and therapeutic target validation in breast cancer. *Mol Oncol* [Revision submitted].
- [28] Rakha EA, Starczynski J, Lee AH, and Ellis IO (2014). The updated ASCO/CAP guideline recommendations for HER2 testing in the management of invasive breast cancer: a critical review of their implications for routine practice. *Histopathology* **64**, 609–615.
- [29] Curtis C, Shah SP, Chin SF, Turashvili G, Rueda OM, Dunning MJ, Speed D, Lynch AG, Samarajiwa S, and Yuan Y, et al (2012). The genomic and transcriptomic architecture of 2,000 breast tumours reveals novel subgroups. *Nature* **486**, 346–352.
- [30] Jiang H, Reinhardt HC, Bartkova J, Tommiska J, Blomqvist C, Nevanlinna H, Bartek J, Yaffe MB, and Hemann MT (2009). The combined status of ATM and p53 link tumor development with therapeutic response. *Genes Dev* **23**, 1895–1909.
- [31] Bueno RC, Canevari RA, Villacis RA, Domingues MA, Caldeira JR, Rocha RM, Drigo SA, and Rogatto SR (2014). ATM down-regulation is associated with poor prognosis in sporadic breast carcinomas. *Ann Oncol* **25**, 69–75.
- [32] Knappskog S, Chrisanthar R, Lokkevik E, Anker G, Ostenstad B, Lundgren S, Risberg T, Mjaaland I, Leirvaag B, and Miletic H, et al (2012). Low expression levels of ATM may substitute for CHEK2/TP53 mutations predicting resistance towards anthracycline and mitomycin chemotherapy in breast cancer. *Breast Cancer Res* **14**, R47.
- [33] Guo X, Yang C, Qian X, Lei T, Li Y, Shen H, Fu L, and Xu B (2013). Estrogen receptor alpha regulates ATM Expression through miRNAs in breast cancer. *Clin Cancer Res* **19**, 4994–5002.
- [34] Tommiska J, Bartkova J, Heinonen M, Hautala L, Kilpivaara O, Eerola H, Aittomaki K, Hofstetter B, Lukas J, and von Smitten K, et al (2008). The DNA damage signalling kinase ATM is aberrantly reduced or lost in BRCA1/BRCA2-deficient and ER/PR/ERBB2-triple-negative breast cancer. *Oncogene* **27**, 2501–2506.
- [35] Beggs AD, Domingo E, McGregor M, Presz M, Johnstone E, Midgley R, Kerr D, Oukrif D, Novelli M, and Abulafi M, et al (2012). Loss of expression of the double strand break repair protein ATM is associated with worse prognosis in colorectal cancer and loss of Ku70 expression is associated with CIN. *Oncotarget* **3**, 1348–1355.
- [36] Rossi D and Gaidano G (2012). ATM and chronic lymphocytic leukemia: mutations, and not only deletions, matter. *Haematologica* **97**, 5–8.
- [37] Weston VJ, Oldreive CE, Skowronska A, Oscier DG, Pratt G, Dyer MJ, Smith G, Powell JE, Rudzki Z, and Kearns P, et al (2010). The PARP inhibitor olaparib induces significant killing of ATM-deficient lymphoid tumor cells in vitro and in vivo. *Blood* **116**, 4578–4587.
- [38] Gilardini Montani MS, Prodosmo A, Stagni V, Merli D, Monteonofrio L, Gatti V, Gentileschi MP, Barila D, and Soddu S (2013). ATM-depletion in breast cancer cells confers sensitivity to PARP inhibition. *J Exp Clin Cancer Res* **32**, 95.
- [39] Kubota E, Williamson CT, Ye R, Elegbede A, Peterson L, Lees-Miller SP, and Bebb DG (2014). Low ATM protein expression and depletion of p53 correlates with olaparib sensitivity in gastric cancer cell lines. *Cell Cycle* **13**, 2129–2137.
- [40] Sultana R, McNeill DR, Abbotts R, Mohammed MZ, Zdzienicka MZ, Qutob H, Seedhouse C, Laughton CA, Fischer PM, and Patel PM, et al (2012). Synthetic lethal targeting of DNA double-strand break repair deficient cells by human apurinic/apyrimidinic endonuclease inhibitors. *Int J Cancer* **131**, 2433–2444.
- [41] Yap TA, Sandhu SK, Carden CP, and de Bono JS (2011). Poly(ADP-ribose) polymerase (PARP) inhibitors: exploiting a synthetic lethal strategy in the clinic. *CA Cancer J Clin* **61**, 31–49.
- [42] Ribeiro-Silva A, Moutinho MA, Moura HB, Vale FR, and Zucoloto S (2006). Expression of checkpoint kinase 2 in breast carcinomas: correlation with key regulators of tumor cell proliferation, angiogenesis, and survival. *Histol Histopathol* **21**, 373–382.
- [43] Kilpivaara O, Bartkova J, Eerola H, Syrjakoski K, Vahteristo P, Lukas J, Blomqvist C, Holli K, Heikkila P, and Sauter G, et al (2005). Correlation of CHEK2 protein expression and c.1100delC mutation status with tumor characteristics among unselected breast cancer patients. *Int J Cancer* **113**, 575–580.
- [44] Stolz A, Ertych N, and Bastians H (2011). Tumor suppressor CHK2: regulator of DNA damage response and mediator of chromosomal stability. *Clin Cancer Res* **17**, 401–405.
- [45] Sullivan A, Yuille M, Repellin C, Reddy A, Reelfs O, Bell A, Dunne B, Gusterson BA, Osin P, and Farrell PJ, et al (2002). Concomitant inactivation of p53 and Chk2 in breast cancer. *Oncogene* **21**, 1316–1324.