



University of Dundee

Quantitative MRI evaluation of whole abdomen adipose tissue volumes in healthy volunteers-validation of technique and implications for clinical studies

Marzetti, Matthew; Brunton, Tracy; McCreight, Laura; Pearson, Ewan; Docherty, Stephen; Gandy, Stephen J.

Published in:
British Journal of Radiology

DOI:
[10.1259/bjr.20180025](https://doi.org/10.1259/bjr.20180025)

Publication date:
2018

Document Version
Version created as part of publication process; publisher's layout; not normally made publicly available

[Link to publication in Discovery Research Portal](#)

Citation for published version (APA):

Marzetti, M., Brunton, T., McCreight, L., Pearson, E., Docherty, S., & Gandy, S. J. (2018). Quantitative MRI evaluation of whole abdomen adipose tissue volumes in healthy volunteers-validation of technique and implications for clinical studies. *British Journal of Radiology*. DOI: 10.1259/bjr.20180025

General rights

Copyright and moral rights for the publications made accessible in Discovery Research Portal are retained by the authors and/or other copyright owners and it is a condition of accessing publications that users recognise and abide by the legal requirements associated with these rights.

- Users may download and print one copy of any publication from Discovery Research Portal for the purpose of private study or research.
- You may not further distribute the material or use it for any profit-making activity or commercial gain.
- You may freely distribute the URL identifying the publication in the public portal.

Take down policy

If you believe that this document breaches copyright please contact us providing details, and we will remove access to the work immediately and investigate your claim.

Title: Quantitative MRI Evaluation of Whole Abdomen Adipose Tissue Volumes in Healthy Volunteers – Validation of Technique and Implications for Clinical Studies

Running Head: MRI of Abdominal Adiposity – Technical Evaluation

Type of Manuscript: Full Paper

Authors: Matthew Marzetti MSc¹, Tracy Brunton DDS², Laura McCreight MBChB³, Ewan Pearson MBChB PhD³, Stephen Docherty FRCR², Stephen J Gandy PhD¹

Affiliations: ¹NHS Tayside Medical Physics, Ninewells Hospital, Dundee DD1 9SY, UK, ²NHS Tayside Clinical Radiology, Ninewells Hospital, Dundee DD1 9SY, UK, ³Division of Molecular and Clinical Medicine, University of Dundee,, Ninewells Hospital, Dundee DD1 9SY, UK.

Sources of Funding: Funding for Mr Marzetti was provided by NHS Education for Scotland. Funding for Dr McCreight was provided by a Wellcome Trust New Investigator Award (102820/Z/13/Z), which was awarded to Professor Pearson.

Acknowledgments: The authors would like to thank all of the study participants and NHS Tayside radiographic staff for their help with the MRI acquisitions. There are no conflicts of interest to declare.

Title: Quantitative MRI Evaluation of Whole Abdomen Adipose Tissue Volumes in Healthy
Volunteers – Validation of Technique and Implications for Clinical Studies

Running Head: MRI of Abdominal Adiposity – Technical Evaluation

Type of Manuscript: Full Paper

1
2
3
4
5
6
7
8
9
10
11
12
13
14
15
16
17
18
19
20
21
22
23
24
25
26
27
28
29
30
31
32
33
34
35
36
37
38
39
40
41
42
43
44
45
46
47
48
49
50
51
52
53
54
55
56
57
58
59
60
61
62
63
64
65

BJR UNCORRECTED PROOFS

Abstract

Objectives: To explore 'whole abdomen' MRI methods for quantifying adipose tissue volumes and to establish associations with body mass index (BMI) and measurement reproducibility - relative to existing 'partial abdomen' methods.

Methods: Fifteen healthy volunteers were scanned on a 3.0T MRI scanner using a double-echo three-point-Dixon gradient echo sequence. Whole abdomen volumes were acquired via three separate scans ('supine 1', 'supine 2' and 'prone'). Segmentation was applied to derive (i) 'whole abdomen' visceral (VAT) and subcutaneous adipose tissue (SCAT) volumes, and (ii) 'partial abdomen' volumes at the lumbar spine (L3 to L5). Root-mean-square coefficients of variation (RMS CoV) were calculated to quantify the variability of each measurement.

Results: 'Whole abdomen' measurements were found to correlate better with BMI ($r^2_{\max} = 0.74$) than 'partial abdomen' volumes ($r^2_{\max} = 0.66$). Total adipose tissue (TAT) measurements correlated better with BMI ($r^2_{\max} = 0.74$) than SCAT ($r^2_{\max} = 0.43$) or VAT ($r^2_{\max} = 0.33$) for both methods. Scan-to-scan RMS CoV's for 'whole abdomen' VAT and SCAT measurements were 4.16% and 3.61% compared to 6.31% and 5.07% for 'partial abdomen' measurements.

Conclusions: 'Whole abdomen' measures of abdominal adiposity are better correlated with BMI and demonstrate better scan-to-scan reproducibility than 'partial abdomen' measures. It is recommended that 'whole abdomen' measures be used in longitudinal MRI radiology investigations, where small volume changes may occur.

Advances in knowledge: Whole abdomen adipose tissue volumes can be measured and quantified using commercial MRI sequences and post-processing software. These methods are better correlated with BMI and are more reproducible than partial abdomen measures.

Introduction

Human obesity is a major healthcare problem across the developed world, and recent statistics published by the World Health Organisation (WHO) has shown that 64.2% of the UK adult population are estimated to be overweight, with 26.9% estimated to be obese [1]. The health implications of obesity are widely reported, and can include greater 'multi-factorial' risks associated with liver diseases (e.g. non-alcoholic fatty liver disease – NAFLD) [2], cancer [3], cardiovascular diseases [4] and diabetes [5] as well as orthopaedic pathologies such as bone fragility [6] and osteoarthritis [7].

Traditionally it has been difficult to accurately assess the level of human obesity, and estimates of these measures have been proposed via the use of body mass index (BMI) calculations (derived from simple measures of weight/height²) and/or simple measures of waist circumference [8]. However these are prone to error, particularly in tall or short individuals where the variation in height may result in 'false negative' or 'false positive' identifiers of obesity since the technique does not distinguish between body fat, lean body mass, and other factors such as an individual's fitness status and cardiovascular risk [9]. A reliable method for measurement and monitoring of the body adipose tissue distribution is therefore vital in order to better understand and plan clinical interventions to reduce the level of obesity and the burden of associated diseases.

Imaging methods for accurately monitoring changes to human adipose tissue volumes are potentially very useful, since they can provide accurate and non-invasive ways in which response to pharmaceutical or lifestyle interventions can be quantified. Of the numerous imaging modalities available, Magnetic Resonance Imaging (MRI) is particularly useful for this purpose [10], since it uses non-ionising radiation which enables repeated use for monitoring over time. The soft-tissue contrast provided by MRI can also highlight the subcutaneous adipose tissue (SCAT) and visceral adipose tissue (VAT) compartments within the abdomen [11] and these are beginning to form useful imaging biomarkers of abdominal adiposity.

Early studies describing the use of MRI for measurement of abdominal adiposity utilised single axial slices for assessment of fat areas [12] or a multiple axial slices for assessment of 'partial abdomen' fat volumes [13], typically using an anatomical locator (e.g. specific vertebrae or the umbilicus) for repeatable positioning of the image slices. The current MRI pulse sequence of choice utilises a simple method of fat/water signal separation as originally described by Dixon in 1984 [14]. Over the last few years, this method has been further optimised and combined with improved fast spoiled gradient echo pulse sequences and better gradient magnetic field technology in order to enable the acquisition of extended areas of 'whole abdomen' fat volumes from the pelvic floor to the

1 diaphragm [15]. Various software packages are commercially available for the post-processing
2 analysis of VAT and SCAT and a user comparison of the different packages has previously been
3 reported [16].
4
5

6 In this pilot study, we sought to address the following: (i) whether the acquisition of 'partial
7 abdomen' fat volumes or 'whole abdomen' fat volumes provided better correlation with BMI; and,
8 (ii) whether one technique or the other would be better indicated for use in longitudinal studies
9 where small volume changes may be present (e.g. following pharmaceutical intervention). For
10 'partial abdomen' acquisitions the post-processing segmentation workload duration is quicker, but
11 the method may be more prone to variations associated with body fat re-distributions between
12 successive scans. Conversely by using the 'whole abdomen' method, we hypothesized that scan-to-
13 scan variations might be less, albeit at the expense of extended post-processing segmentation
14 workload duration. The aim of the study therefore was to answer these research questions by
15 scanning a cohort of healthy volunteers on three separate occasions (twice in the supine position
16 and once in the prone position) in order to observe correlations with BMI and 'scan-to-scan'
17 variations in measures of VAT and SCAT volumes associated with each acquisition technique.
18
19
20
21
22
23
24
25
26
27
28
29
30
31
32
33
34
35
36
37
38
39
40
41
42
43
44
45
46
47
48
49
50
51
52
53
54
55
56
57
58
59
60
61
62
63
64
65

Methods

MRI Acquisition

A cohort of fifteen informed and consented healthy volunteers (12 female, 3 male) with mean age 34 years (range 23-50 years) and mean BMI 24.9 kg/m² (range 19.4-30.1 kg/m²) were scanned on a 3 T Prisma^{Fit} MRI Scanner (Siemens Healthineers, Erlangen, Germany), using two 18-channel body matrix coils and spine matrix coil to cover the entire abdomen.

For each volunteer, a series of axial 2D dual-echo Dixon Volume Interpolated Breath-hold Examination (VIBE) gradient echo images were acquired through the abdomen from the top of the diaphragm down to the femoral heads in two breath-holds, providing fat-only and water-only images. The imaging parameters were TR 3.67ms, TE 1.23 and 2.46ms, flip-angle (FA) 9° and bandwidth 1040 Hz/pixel. Each slice was 3mm thick, and the number of slices acquired ranged from 144 to 172, depending on the height of the volunteer. The in-plane spatial resolution was 169x320 pixels over a typical (patient size dependent) field-of-view (FOV) of 390x480mm. Each breath-hold lasted approximately ten seconds.

Three separate acquisitions were acquired, with the volunteer being removed from the scanner and instructed to walk about for a few minutes before being repositioned for each acquisition in order to simulate a completely new scan. Volunteers were scanned twice in the supine position (referred to as 'supine 1' and 'supine 2'), and once in the prone position (referred to as 'prone'). The prone position was used in order to simulate the greatest possible variation in subject positioning. Volunteers were scanned with their arms by their sides when in the supine position, and arms above their head when scanned in the prone position. Padding was used between the abdomen and the arms where required in order to provide clear anatomical separation.

Image Analysis

Initially, all images were reviewed by an experienced Radiologist in order to confirm that no clinical 'incidental findings' were present. Following this, the two axial image slice blocks required for each whole volume were combined using ImageJ (U. S. National Institutes of Health, Bethesda, Maryland, USA) to form a single dataset, and any overlapping slices were removed. Image analysis was carried out using Analyze (Version 12.0, Mayo Clinic, Rochester, MN) using the fat-only images. The choice of post-processing package was made on the basis of local availability, together with known suitability for use based on previously performed studies elsewhere [10, 11, 16]. A signal-intensity threshold cut-off value was applied to the images to separate hyper-intense adipose tissue from

1 hypo-intense background and non-adipose tissues. The threshold cut-off value was chosen manually
2 for each data set by an experienced observer. Manual segmentation methods were then used to
3 remove any remaining hyper-intense signal areas (such as bone marrow) that did not correspond to
4 either visceral or subcutaneous adipose tissue, and to correct areas assigned in error by the original
5 signal threshold (Figure 1 and 2).
6
7

8
9 The dome of the liver (upper) and the top of the femoral heads (lower) were used as anatomical
10 boundaries to determine MRI slice limits for the volume assessments ('whole abdomen'). The
11 segmentation process was then repeated using the top of the L3 inter-vertebral disc and the base of
12 the L5 inter-vertebral disc as anatomical boundaries to determine MRI slice limits for the localised
13 volume assessments ('partial abdomen'). The final segmented data sets were used to measure
14 volumes of VAT and SCAT, and the VAT to SCAT ratio. The process was completed for all three
15 acquisitions ('supine 1', 'supine 2' and 'prone').
16
17

18 In order to investigate test-retest intra-observer variation, the 'supine 1' volumes were analysed
19 fully for a second time by the same observer after a period of at least one month (in order to
20 minimise learning effects). Additionally, the first ten 'supine 1' volumes were analysed by a second
21 observer (using the same methodology) to derive a measure of test-retest inter-observer variation.
22

23 **Statistical Analysis**

24 We sought to identify whether patient positioning ('supine 1', 'supine 2' or 'prone') resulted in any
25 statistically significant differences between measured volumes. In order to ascertain this, the
26 measurements of VAT and SCAT for each acquisition were first assessed for normality using the
27 Shapiro-Wilk test. Thereafter, normally distributed data were compared between the three
28 different data acquisitions using the paired t-test, and non-normally distributed data were compared
29 using the Wilcoxon signed rank test. The Bonferroni correction was used to account for multiple
30 comparisons. The intra-class correlation coefficient (ICC) was also used to examine correlations
31 between the three different acquisitions for 'whole abdomen' and 'partial abdomen' VAT and SCAT
32 measurements. The VAT, SCAT and total adipose tissue (TAT) volumes were plotted against
33 volunteer BMI for each patient position to determine which resulted in the best correlation. Bland-
34 Altman analysis was used to highlight individual VAT v SCAT ratio variations between the 'partial
35 abdomen' and 'whole abdomen' techniques.
36
37
38
39
40
41
42
43
44
45
46
47
48
49
50
51
52
53
54

55 Scan-to-scan coefficients of variation (CoV) for 'whole abdomen' VAT, SCAT and VAT to SCAT ratios
56 over the three acquisitions ('supine 1', 'supine 2' and 'prone') were calculated for each individual
57 volunteer. These were then combined into a root mean square value (RMS CoV). This was repeated
58
59
60
61
62
63
64
65

1 for the 'partial abdomen' measurements, and the RMS CoV's were compared to determine which
2 coverage method provided the better scan-to-scan reproducibility. The process was also repeated
3 after omitting the 'prone' volumes, as this was considered to be an extreme change in patient
4 positioning (i.e. unlikely to be reflective of clinical practice). Finally, RMS CoV's for the original
5 measurement of 'supine 1' and the repeated measurements were also calculated to quantify test-
6 retest intra- and inter-observer variations. All statistical tests were performed using SPSS (version
7 22.0, IBM Corp, Armonk, NY) and p-values of less than 0.05 were considered to be statistically
8 significant.
9
10
11
12
13
14
15
16
17
18
19
20
21
22
23
24
25
26
27
28
29
30
31
32
33
34
35
36
37
38
39
40
41
42
43
44
45
46
47
48
49
50
51
52
53
54
55
56
57
58
59
60
61
62
63
64
65

Results

All volunteers completed the study successfully, resulting in 45 'whole abdomen' measurements and 45 'partial abdomen' measurements being used for scan-to-scan statistical comparisons.

The measured mean volumes (+/- SD) for SCAT, VAT and VAT to SCAT ratio are shown in Table 1. When the data were tested for normality using the Shapiro Wilk test, the SCAT volumes were found to be normally distributed (enabling parametric test comparison of means) whilst the VAT volumes were non-normally distributed (requiring non-parametric test comparison of means). For both the 'whole abdomen' and 'partial abdomen' volumes, no significant differences were noted between the means of the VAT volumes or the calculated ratios. However the mean SCAT volumes measured in the prone position were each found to be significantly lower than those measured in the supine position ($p < 0.001$). All ICC comparisons were categorised as 'excellent', and ranged from 0.97 ('supine 1' v 'prone' for VAT 'partial abdomen') to 0.99 ('supine 2' v 'prone' for VAT 'whole abdomen').

		VAT (L)	SCAT (L)	VAT:SCAT Ratio
Whole Abdomen Volumes	Supine 1	2.42 ± 2.12	7.58 ± 2.11	0.35 ± 0.38
	Supine 2	2.39 ± 2.05	7.55 ± 2.13	0.34 ± 0.38
	Prone	2.40 ± 2.07	7.18 ± 1.99	0.37 ± 0.42
Partial Abdomen Volumes	Supine 1	0.82 ± 0.72	2.64 ± 0.85	0.35 ± 0.42
	Supine 2	0.79 ± 0.67	2.69 ± 0.88	0.34 ± 0.42
	Prone	0.76 ± 0.60	2.49 ± 0.81	0.36 ± 0.43

Table 1: Average measured VAT and SCAT volumes (measured in litres, L) and VAT to SCAT ratios for the 3 acquisitions.

For the VAT to SCAT ratio (a measure often used clinically), the mean values of the 'partial abdomen' ratios were noted to be similar to the mean 'whole abdomen' ratio measurements overall (range 0.34-0.37 – Table 1). However when the data were examined on an individual basis, there were some notable differences evident (Figure 3). Figure 3 shows that the VAT to SCAT ratio differences for 'supine 1' measurements were as high as 0.17 ('partial abdomen' ratio proportionally higher) and as low as -0.09 ('partial abdomen' ratio proportionally lower). Although not plotted, the equivalent data for the 'supine 2' and 'prone' acquisitions were very similar.

Table 2 consists of r^2 values describing correlations between VAT, SCAT and TAT with BMI for each volunteer. All measures showed a positive correlation with BMI. The TAT measurement was strongly correlated with BMI in all instances, but measures of VAT in particular were only weakly correlated

with BMI. In all cases the 'whole abdomen' measures were more strongly correlated with BMI than the 'partial abdomen' measurements.

		VAT	SCAT	TAT
Whole Abdomen Volumes	Supine 1	0.33	0.40	0.74
	Supine 2	0.32	0.43	0.74
	Prone	0.30	0.38	0.71
Partial Coverage Volumes	Supine 1	0.29	0.30	0.65
	Supine 2	0.30	0.30	0.66
	Prone	0.25	0.30	0.62

Table 2: r^2 values for VAT, SCAT and TAT measurements plotted against volunteer BMI

All assessments of scan-to-scan variation, along with intra- and inter-observer variation are included in Table 3. For the assessment of scan-to-scan variation, the 'whole abdomen' analyses for VAT and SCAT (4.16% and 3.61%) were less variable than those for the 'partial abdomen' measurements (6.31% and 5.07%) respectively.

When the 'prone' volumes were removed, the RMS CoV's for both measures were reduced further. The RMS CoV's for the 'whole abdomen' assessments VAT and SCAT were 2.66% and 1.34% respectively, compared to 4.80% and 3.13% for the 'partial abdomen' measurements VAT and SCAT. Again whole abdomen analyses were less variable.

For all single time-point test-retest measurements there was little difference in repeatability between 'whole abdomen' and 'partial abdomen' volumes. However, the intra-observer RMS CoV's for VAT and SCAT were much lower than the equivalent inter-observer RMS CoV's. Intra-observer variations were recorded as low as 0.97% (for 'whole abdomen' SCAT) whilst inter-observer variations were recorded as high as 6.78% (for 'whole abdomen' VAT). Scan-to-scan variations were slightly larger than test retest intra-observer variations, but smaller than test retest inter-observer variations – suggesting that for small clinical studies where volume changes are examined over time it would be preferable to have a single observer carry out the analysis. In all cases, the VAT measurements were more variable than the SCAT measurements, reflecting the difficulty associated with measuring the former variable.

	Reproducibility Measure	VAT RMS CoV (%)	SCAT RMS CoV (%)
Whole Abdomen Volumes	Scan-to Scan	4.16	3.61
	Supine Only Scan-to Scan	2.66	1.34
	Intra-Observer	3.50	0.97
	Inter-Observer	6.78	2.93
Partial Coverage Volumes	Scan-to Scan	6.31	5.07
	Supine Only Scan-to Scan	4.80	3.13
	Intra-Observer	3.47	1.17
	Inter-Observer	6.77	2.14

Table 3: RMS Coefficients of Variation for different reproducibility measures of VAT and SCAT

1
2
3
4
5
6
7
8
9
10
11
12
13
14
15
16
17
18
19
20
21
22
23
24
25
26
27
28
29
30
31
32
33
34
35
36
37
38
39
40
41
42
43
44
45
46
47
48
49
50
51
52
53
54
55
56
57
58
59
60
61
62
63
64
65

S

BJR UNCORRECTED PROOF

Discussion

1
2
3 In this pilot study, we have demonstrated that the implementation of MRI segmentation techniques
4 using commercially available software can provide reproducible quantitative measures of 'whole
5 abdomen' volumes (from commercial Dixon sequences) that are potentially suitable for use in
6 longitudinal MR abdominal adiposity studies. When compared with 'partial abdomen' techniques,
7 the 'whole abdomen' volume measurements (TAT and SCAT) were found to correlate more strongly
8 with BMI, although the measurement of visceral adipose tissue (VAT) remained poorly correlated
9 with BMI.
10

11
12
13
14
15
16 This research supports the theory that BMI alone may not be a reliable indicator of overall metabolic
17 health [17], as it correlates very weakly with VAT measurements despite its strong correlation with
18 TAT. It is widely accepted that the measure of BMI cannot distinguish between lean body mass and
19 fat body mass. Further, there is good evidence to suggest that VAT is a particularly important clinical
20 measure since it is known to correlate more strongly (relative to SCAT) with adverse metabolic risk
21 indices such as measured cholesterol and blood pressure, but more weakly (relative to SCAT) with
22 BMI [18]. High levels of VAT are more associated with a range of clinical conditions than TAT or SCAT
23 [19]. Although not directly applicable to our cohort of healthy volunteers in this study, the concept
24 of the 'obesity paradox' [20] further suggests that the measurement of BMI in patients with
25 cardiovascular disease may not accurately predict the status of a better or worse clinical outcome.
26 Whether more quantitative measures such as VAT are better able to predict clinical outcome
27 remains to be seen, but this particular research question is an intriguing one.
28
29
30
31
32
33
34
35
36
37

38 In this study, the DIXON method used for anatomical coverage of the full abdominal cavity shares
39 'outline similarity' with work reported elsewhere [21] – albeit with different segmentation
40 approaches. The reproducibility of our work is also similar to that published recently by Middleton
41 et al [22]. From a methodological perspective, our original hypothesis was based on the fact that
42 whole abdomen volumes would provide a more reproducible MR endpoint relative to the commonly
43 used partial coverage approach. To a large extent this has been confirmed, where for example
44 'whole abdomen' measurements demonstrated less variation in all scan-to-scan examinations than
45 the equivalent 'partial abdomen' measurements. The lower variation in 'whole abdomen'
46 measurements indicates that these would be well suited for longitudinal research studies, especially
47 if only small changes are expected. However, the inter-observer variation was typically twice as
48 large as the intra-observer variation - implying that the same observer should make measurements
49 throughout such a study where possible.
50
51
52
53
54
55
56
57
58
59
60
61
62
63
64
65

1
2
3
4
5
6
7
8
9
10
11
12
13
14
15
16
17
18
19
20
21
22
23
24
25
26
27
28
29
30
31
32
33
34
35
36
37
38
39
40
41
42
43
44
45
46
47
48
49
50
51
52
53
54
55
56
57
58
59
60
61
62
63
64
65

In this work the VAT and SCAT volumes themselves were not corrected for possible variations associated with magnetic field inhomogeneities at the edges of the FOV. This distortion effect can occur due to gradient non-linearities away from the scanner isocentre. In order to minimise this effect we performed the following: (i) we acquired all images with the scanner vendor 'distortion correction' algorithm applied; (ii) we ensured that all scanning was performed with the centre of the FOV 'at isocentre', and (iii) we ensured that the two overlapping FOV's were acquired such that the anatomical area of interest lay as close to the isocentre as possible in the z-direction – i.e. outer areas of the FOV in the z-direction were discarded.

In order to explore the widest range of scan-to-scan conditions, we elected to scan the same volunteers on three different occasions – twice in the 'supine' position and once in the 'prone' position. Although there were no statistically significant differences between any of the measurement means between the two supine volumes, the mean SCAT volumes were consistently and significantly lower when measured prone. Changing the patient from 'supine' to 'prone' was implemented in order to represent the maximum possible amount of radiographic variation in patient position and therefore the highest chance of redistribution of adipose tissue that might be expected. It is possible that when the patients positioned their arms above their head in the prone position they 'stretched out', thus resulting in a redistribution of a portion of the SCAT volume outside of the measurement field. This effect is marginally more pronounced for the 'partial coverage' measurements since the redistribution of the adipose tissue volume can occur more easily above and below the plane of the image slices under investigation.

In this study it was interesting to note that the mean VAT to SCAT volume ratio remained relatively consistent, whether derived from 'partial abdomen' or 'whole abdomen' measures. This implies that for a single time-point clinical overview the 'partial abdomen' measurements may be sufficient as a way of deriving this particular variable. However detailed inspection of individual results (Figure 2) revealed large 'per-volunteer' differences between the VAT to SCAT volume ratios when calculated using either 'whole abdomen' or 'partial abdomen' data – suggesting that the consistency between the means may be a chance observation. This is accepted as a possible weakness of our study; an investigation involving a greater number of volunteers may help to confirm whether this consistency between the VAT to SCAT volume ratios is real or a statistical artefact.

Other weaknesses of our study include the relatively large inter-observer variation - believed to be attributable in part to the choice of signal intensity 'cut-off' threshold used to differentiate adipose tissue from other structures. This threshold signal intensity was chosen manually by each observer independently, and small variations to the chosen threshold may potentially contribute to a large

1 variation in the measured volumes. This is particularly likely to be the case for VAT, since it is a more
2 heterogeneous structure and also closely associated alongside other tissue structures with variable
3 signal intensity values. In this study, the VAT measurements were found to be consistently less
4 reproducible than the SCAT measurements. The final weakness of the work was the time required
5 to perform 'whole abdomen' segmentation (typically 30-60 minutes of processing time per dataset).
6 This could potentially preclude the use of the segmentation technique for large-scale population
7 studies; although automated methods [23] for this processing are evolving any may reach
8 commercial platforms for wider use at some stage in the future.
9

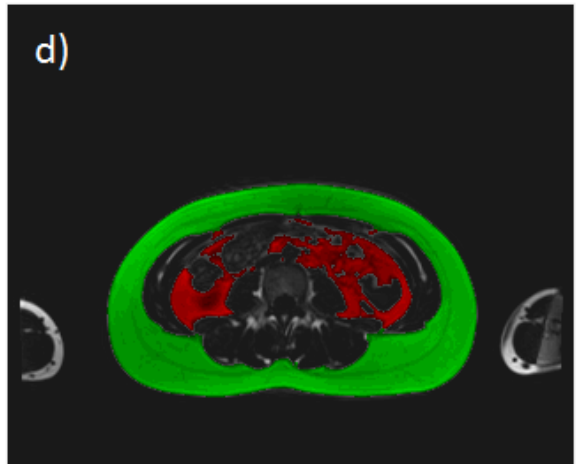
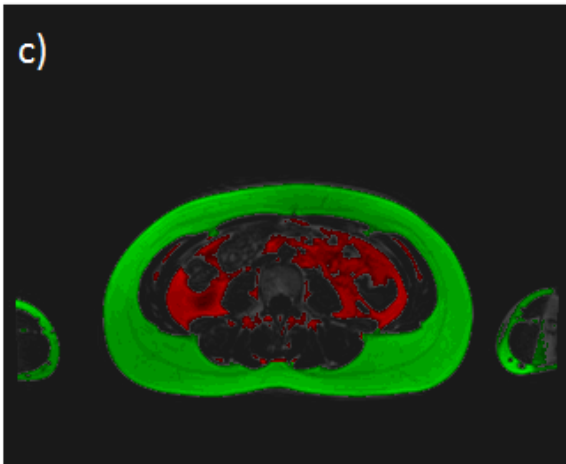
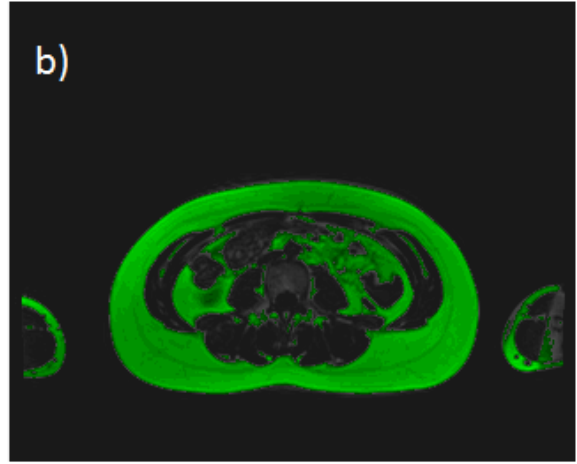
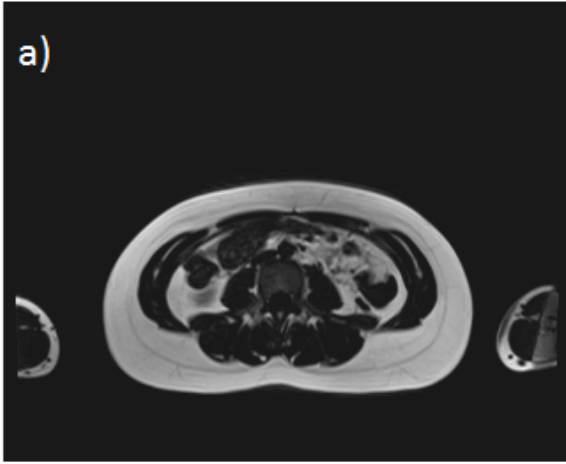
10
11
12
13
14
15 In conclusion, we have reported a commercially available 3T MRI method that is able to acquire and
16 measure 'whole abdomen' adipose tissue volumes. In a cohort of healthy volunteers, the 'whole
17 abdomen' volumes were better correlated with BMI than commonly used 'partial abdomen'
18 measures, and the 'whole abdomen' technique was more reproducible when measured over
19 multiple time-points. These variables are deemed suitable for use as clinical MRI biomarkers in
20 longitudinal radiology studies where small compartmental changes to abdominal adipose tissue
21 volumes may be expected.
22
23
24
25
26

27 28 29 30 31 32 33 34 35 36 37 38 39 40 41 42 43 44 45 46 47 48 49 50 51 52 53 54 55 56 57 58 59 60 61 62 63 64 65

References

1. Country profiles on nutrition, physical activity and obesity in the 53 WHO European Region Member States. Methodology and summary (2013). ISBN 978 92 890 5003 6.
2. Thann NN, Newsome PN. A concise review of non-alcoholic fatty liver disease. *Atherosclerosis* 2015; 239 (1): 192-202.
3. Colditz GA, Peterson LL. Obesity and Cancer: Evidence, Impact and Future Directions. *Clin Chem* 2017; DOI: 10.1373/clinchem.2017.277376.
4. Bastien M, Poirier P, Lemieux I, Despres JP. Overview of epidemiology and contribution of obesity to cardiovascular disease. *Prog Cardiovasc Dis* 2014; 56: 369–381.
5. Chan JM, Rimm EB, Colditz GA, Stampfer MJ, Willett WC. Obesity, fat distribution, and weight gain as risk factors for clinical diabetes in men. *Diabetes Care* 1994; 17: 961–969.
6. Palermo A, Tuccinardi D, Defeudis G et al. BMI and BMD : The Potential Interplay between Obesity and Bone Fragility. *Int J Environ Res Public Health* 2016; 13 (6): E544.
7. Coggon D, Reading I, Croft P, McLaren M, Barrett D, Cooper C. Knee Osteoarthritis and Obesity. *Int J Obes Relat Metab Disord* 2001; 25 (5): 622-7.
8. Nazare JA, Smith J, Borel AL et al. Usefulness of measuring both body mass index and waist circumference for the estimation of visceral adiposity and related cardiometabolic risk profile (from the INSPIRE ME IAA study). *Am J Cardiol* 2015; 115 (3): 307-315.
9. Ahima RS, Lazar MA. The Health Risk of Obesity—Better Metrics Imperative. *Science* 2013; 341 (6148): 856-858.
10. Klopfenstein BJ, Kim MS, Krisny CM, Szumowski J, Rooney WD, Purnell JQ. Comparison of 3T MRI and CT for the measurement of visceral and subcutaneous adipose tissue in humans. *Brit J Radiol* 2012; 85: e826-e830.

11. Srinivasan S, Ambler GR, Baur LA et al. Randomized, Controlled Trial of Metformin for Obesity and Insulin Resistance in Children and Adolescents: Improvement in Body Composition and Fasting Insulin. *J Clin Endocrinol Metab*, June 2006, 91(6):2074–2080.
12. Hallsworth K, Fattakhova G, Hollingsworth KG et al. Resistance exercise reduces liver fat and its mediators in non-alcoholic fatty liver disease independent of weight loss. *Gut* 2011; 60: 1278-1283.
13. Demerath EW, Ritter KJ, Couch WA et al. Validity of a new automated software program for visceral adipose tissue estimation. *Int J Obes (Lond)* 2007; 31(2): 285–291.
14. Dixon WT. Simple proton spectroscopic imaging. *Radiology* 1984; 153:189-194.
15. Neamat-Allah J, Wald D, Husing A et al. Validation of Anthropometric Indices of Adiposity against Whole-Body Magnetic Resonance Imaging – A Study within the German European Prospective Investigation into Cancer and Nutrition (EPIC) Cohorts. *Plos One* 2014; 9 (3) e91586.
16. Bonekamp S, Ghosh P, Crawford S et al. Quantitative comparison and evaluation of software packages for assessment of abdominal adipose tissue distribution by magnetic resonance imaging. *International Journal of Obesity* (2008); 32: 100–111.
17. Tomiyama AJ, Hunger JM, Nguyen-Cuu J and Wells C. Misclassification of cardiometabolic health when using body mass index categories in NHANES 2005–2012. *International Journal of Obesity* 2016; 40: 883-886.
18. Fox CS, Massaro JM, Hoffman U et al. Abdominal Visceral and Subcutaneous Adipose Tissue Compartments Association with Metabolic Risk Factors in the Framingham Heart Study. *Circulation* 2007; 116: 39-48.
19. Shuster A, Patlas M, Pinthus J H, and Mourtzakis M. The clinical importance of visceral adiposity: a critical review of methods for visceral adipose tissue analysis. *Brit J Radiol*. 2012; 85(1009): 1–10.
20. Hainer V, Aldhoon-Hainerova I. Obesity Paradox Does Exist. *Diabetes Care* 2013; 36 (2): S276-281.
21. West J, Dahlqvist Leinhard O, Romu T, Collins R, Garratt S, Bell JD, et al. Feasibility of MR-Based Body Composition Analysis in Large Scale Population Studies. *PLoS ONE* (2016) 11(9):
22. Middleton MS, Haufe W, Hooker J et al. Quantifying Abdominal Adipose Tissue and Thigh Muscle Volume and Hepatic Proton Density Fat Fraction: Repeatability and Accuracy of an MR Imaging–based, Semi-automated Analysis Method. *Radiology* 2017; 283 (2): 438-449.
23. Sadananthan SA, Prakesh B, Leow MK et al. Automated Segmentation of Visceral and Subcutaneous (Deep and Superficial) Adipose Tissues in Normal and Overweight Men. *J Magn Reson Imaging* 2015; 41 (4): 924-934.



18
19
20
21
22
23
24
25
26
27
28
29
30
31
32
33
34
35
36
37
38
39
40
41
42
43
44
45
46
47
48
49
50
51
52
53
54
55
56
57
58
59
60
61
62
63
64
65

Figure 1: Analysis of images a) original image, b) image after global thresholding, c) separation of visceral (inner) and subcutaneous (outer) adipose tissue applied, d) final image after analysis complete.

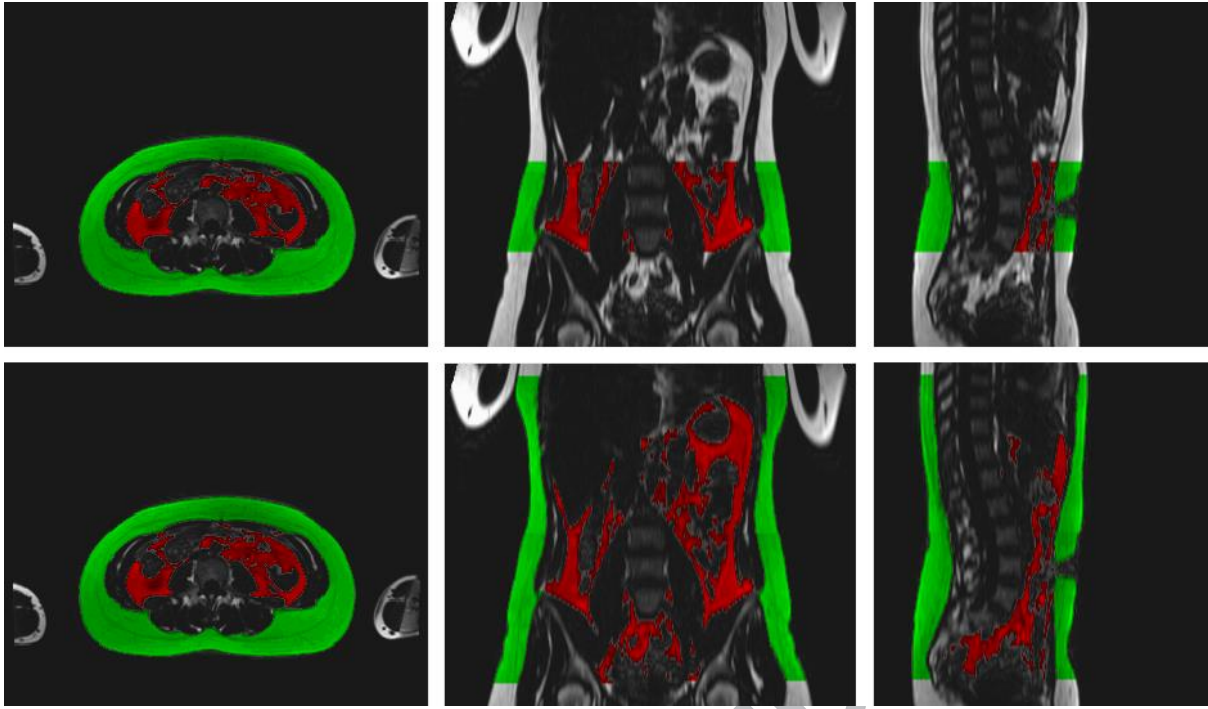


Figure 2: Extent of anatomical regions for partial abdomen coverage, extending from L3–L5 (above) and whole abdomen measurements starting at the dome of the liver and extending down to the top of the femoral heads (below). Subcutaneous adipose tissue (SCAT) is highlighted (outer) and visceral adipose tissue (VAT) is highlighted (inner).

1
2
3
4
5
6
7
8
9
10
11
12
13
14
15
16
17
18
19
20
21
22
23
24
25
26
27
28
29
30
31
32
33
34
35
36
37
38
39
40
41
42
43
44
45
46
47
48
49
50
51
52
53
54
55
56
57
58
59
60
61
62
63
64
65

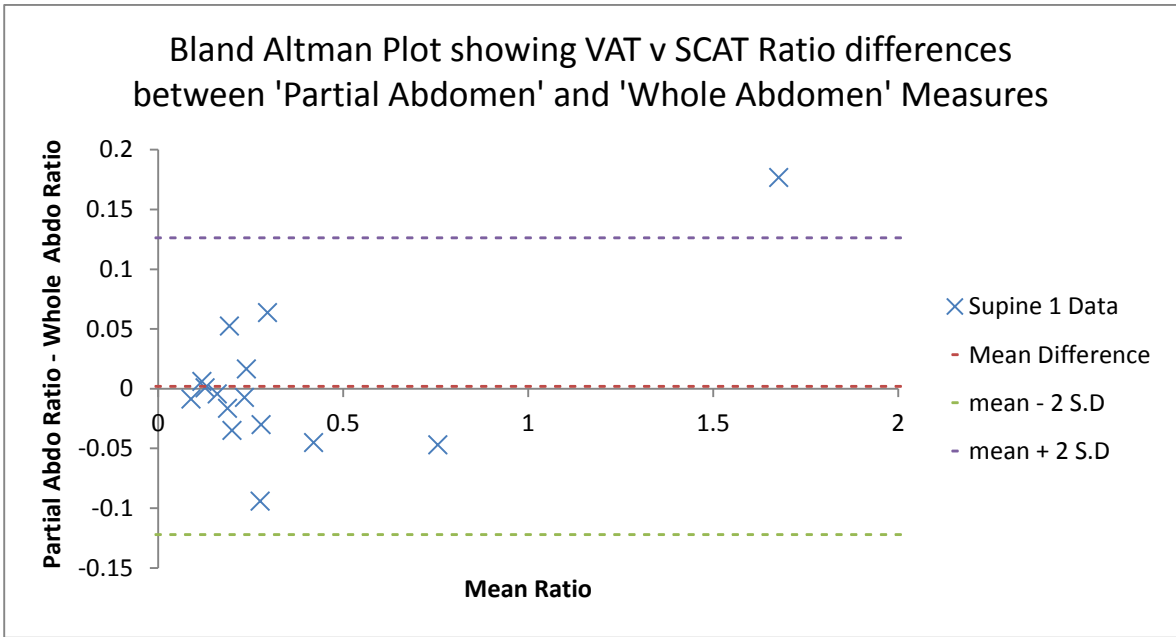


Figure 3: Bland Altman plot of differences between VAT to SCAT ratios from 'partial abdomen' and 'whole abdomen' measures.

1
2
3
4
5
6
7
8
9
10
11
12
13
14
15
16
17
18
19
20
21
22
23
24
25
26
27
28
29
30
31
32
33
34
35
36
37
38
39
40
41
42
43
44
45
46
47
48
49
50
51
52
53
54
55
56
57
58
59
60
61
62
63
64
65

