



The University of  
**Nottingham**

UNITED KINGDOM · CHINA · MALAYSIA

Chen, Xin and Graham, Jim and Petropoulos, Ioannis N. and Ponirakis, Georgios and Asghar, Omar and Alam, Uazman and Marshall, Andrew and Ferdousi, Maryam and Azmi, Shazli and Efron, Nathan and Malik, Rayaz A. (2018) Corneal nerve fractal dimension: a novel corneal nerve metric for the diagnosis of diabetic sensorimotor polyneuropathy. *Investigative Ophthalmology & Visual Science*, 59 (2). pp. 1113-1118. ISSN 1552-5783

**Access from the University of Nottingham repository:**

<http://eprints.nottingham.ac.uk/50722/1/i1552-5783-59-2-1113.pdf>

**Copyright and reuse:**

The Nottingham ePrints service makes this work by researchers of the University of Nottingham available open access under the following conditions.

This article is made available under the Creative Commons Attribution Non-commercial No Derivatives licence and may be reused according to the conditions of the licence. For more details see: <http://creativecommons.org/licenses/by-nc-nd/2.5/>

**A note on versions:**

The version presented here may differ from the published version or from the version of record. If you wish to cite this item you are advised to consult the publisher's version. Please see the repository url above for details on accessing the published version and note that access may require a subscription.

For more information, please contact [eprints@nottingham.ac.uk](mailto:eprints@nottingham.ac.uk)

# Corneal Nerve Fractal Dimension: A Novel Corneal Nerve Metric for the Diagnosis of Diabetic Sensorimotor Polyneuropathy

Xin Chen,<sup>1</sup> Jim Graham,<sup>2</sup> Ioannis N. Petropoulos,<sup>3</sup> Georgios Ponirakis,<sup>3</sup> Omar Asghar,<sup>4</sup> Uazman Alam,<sup>5,6</sup> Andrew Marshall,<sup>7</sup> Maryam Ferdousi,<sup>4</sup> Shazli Azmi,<sup>4</sup> Nathan Efron,<sup>8</sup> and Rayaz A. Malik<sup>3,4</sup>

<sup>1</sup>School of Computer Science, University of Nottingham, Nottingham, United Kingdom

<sup>2</sup>Centre for Imaging Sciences, Institute of Population Health, University of Manchester, Manchester, United Kingdom

<sup>3</sup>Weill Cornell Medicine-Qatar, Division of Medicine, Doha, Qatar

<sup>4</sup>Cardiovascular Sciences, Institute of Cardiovascular Sciences, University of Manchester, Manchester, United Kingdom

<sup>5</sup>Department of Eye and Vision Sciences, Institute of Ageing and Chronic Disease, University of Liverpool, Liverpool, United Kingdom

<sup>6</sup>Diabetes and Endocrinology Research, Clinical Sciences Centre, Aintree University Hospital, Liverpool, United Kingdom

<sup>7</sup>Department of Clinical Neurophysiology, Central Manchester NHS Foundation Trust, Manchester, United Kingdom

<sup>8</sup>Institute of Health and Biomedical Innovation, Queensland University of Technology, Brisbane, Australia

Correspondence: Rayaz A. Malik, Weill Cornell Medicine-Qatar, Education City, Qatar Foundation, PO Box 24144, Doha, Qatar; ram2045@qatar-med.cornell.edu; rayaz.a.malik@manchester.ac.uk.

Submitted: November 8, 2017

Accepted: January 21, 2018

Citation: Chen X, Graham J, Petropoulos IN, et al. Corneal nerve fractal dimension: a novel corneal nerve metric for the diagnosis of diabetic sensorimotor polyneuropathy. *Invest Ophthalmol Vis Sci.* 2018;59:1113-1118. <https://doi.org/10.1167/iov.17-23342>

**OBJECTIVE.** Corneal confocal microscopy (CCM), an in vivo ophthalmic imaging modality, is a noninvasive and objective imaging biomarker for identifying small nerve fiber damage. We have evaluated the diagnostic performance of previously established CCM parameters to a novel automated measure of corneal nerve complexity called the corneal nerve fiber fractal dimension (ACNFrD).

**METHODS.** A total of 176 subjects (84 controls and 92 patients with type 1 diabetes) with and without diabetic sensorimotor polyneuropathy (DSPN) underwent CCM. Fractal dimension analysis was performed on CCM images using purpose-built corneal nerve analysis software, and compared with previously established manual and automated corneal nerve fiber measurements.

**RESULTS.** Manual and automated subbasal corneal nerve fiber density (CNFD) ( $P < 0.0001$ ), length (CNFL) ( $P < 0.0001$ ), branch density (CNBD) ( $P < 0.05$ ), and ACNFrD ( $P < 0.0001$ ) were significantly reduced in patients with DSPN compared to patients without DSPN. The areas under the receiver operating characteristic curves for identifying DSPN were comparable: 0.77 for automated CNFD, 0.74 for automated CNFL, 0.69 for automated CNBD, and 0.74 for automated ACNFrD.

**CONCLUSIONS.** ACNFrD shows comparable diagnostic efficiency to identify diabetic patients with and without DSPN.

**Keywords:** corneal confocal microscopy, diabetic neuropathy, image segmentation, nerve fiber quantification

Diabetic sensorimotor polyneuropathy (DSPN) affects at least 50% of patients with diabetes.<sup>1</sup> Earlier diagnosis and timely intervention to prevent progression to costly outcomes like foot ulceration could reduce not only morbidity but also mortality.<sup>2-4</sup>

DSPN can be quantified by assessing neuropathic symptoms and deficits, quantitative sensory testing, and neurophysiology.<sup>5</sup> Neurophysiology is objective and reproducible and considered to be the most reliable method to confirm the diagnosis of DSPN, but it assesses only large nerve fiber damage, which may be preceded by small fiber damage.<sup>6,7</sup> Small fiber dysfunction can be quantified by evaluating thermal thresholds,<sup>8</sup> and small fiber pathology can be evaluated from a skin biopsy by deriving the intraepidermal nerve fiber density (IENFD).<sup>9-11</sup> However, skin biopsy is invasive<sup>9</sup> and therefore not easily amenable to

repeat evaluation, and there are limited studies on the diagnostic reliability of IENFD in DSPN.<sup>12</sup>

Corneal confocal microscopy (CCM) can be used to image small nerve fiber damage. Previous studies<sup>13-18</sup> have shown that corneal nerve loss can be detected in diabetic patients without diabetic neuropathy. This reflects the ability of CCM to capture early small fiber pathology, which cannot be detected using conventional tests such as diabetic neuropathic symptoms, deficits, and neurophysiology. This suggests that CCM may act as a surrogate endpoint for early DSPN.<sup>6,19-21</sup> We have previously shown that CCM and IENFD correlate with each other<sup>14</sup> and that the diagnostic ability of CCM is comparable to that of IENFD for the diagnosis of DSPN.<sup>18,22</sup> In 2003, we originally established that quantification of subbasal corneal nerve fiber density (CNFD), corneal nerve branch density (CNBD), and corneal nerve fiber length (CNFL) was a reliable



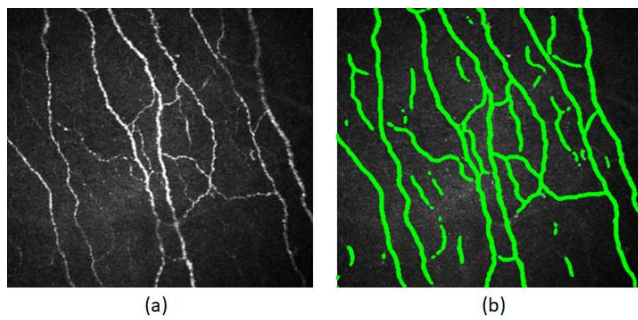


FIGURE 1. (a) Original CCM image. (b) Automatically detected nerve fibers.

means to quantify corneal nerve damage and repair in diabetic neuropathy.<sup>13</sup> Since then multiple studies have shown that these parameters also identify nerve fiber degeneration and repair in a range of peripheral neuropathies including amyloid neuropathy,<sup>23</sup> Charcot-Marie-Tooth disease type 1A,<sup>24</sup> chronic inflammatory demyelinating polyneuropathy,<sup>25,26</sup> and human immunodeficiency virus (HIV)-induced sensory neuropathy,<sup>27</sup> as well as central neurodegenerative conditions including motor neuron disease,<sup>28</sup> Parkinson's disease,<sup>29</sup> and multiple sclerosis.<sup>30,31</sup> However, while corneal nerve fiber density, branch density, and length can quantify nerve fiber damage and repair, they cannot differentiate specific neurodegenerative conditions. We propose a novel metric of corneal nerve morphology, the fractal dimension (FD),<sup>32</sup> to measure the spatial loss of nerve fibers, which may help to identify specific neurodegenerative conditions and augment the diagnosis of DSPN.

## METHODS

### Study Subjects

This research adhered to the tenets of the Declaration of Helsinki and was approved by the North Manchester Research Ethics Committee. Age between 14 and 85 years and a history of type 1 diabetes were used as the inclusion criteria. Exclusion criteria were a positive history of malignancy, connective tissue or infectious disease, deficiency of vitamin B<sub>12</sub> or folate, liver failure, chronic renal failure, active diabetic foot ulceration and family history of peripheral neuropathy, active ocular disease, and systemic disease known to affect the cornea other than diabetes or chronic corneal pathologies. Informed written consent was obtained from all participants. Ninety-two patients with type 1 diabetes mellitus and 84 age-matched controls were recruited for the study. All subjects were assessed for the presence and severity of DSPN based on the updated Toronto consensus criteria.<sup>33</sup> All participants underwent assessment of body mass index, glycated hemoglobin (HbA<sub>1c</sub>), total cholesterol, high-density lipoprotein cholesterol (HDL), triglycerides, and systolic and diastolic blood pressure.

### Peripheral Neuropathy Assessment

Neurologic deficits (Neuropathy Disability score)<sup>34</sup> and neuropathic symptoms (Diabetic Neuropathy Symptom score)<sup>35</sup> were evaluated. Vibration perception threshold (VPT) was tested using a neurothesiometer (Horwell, Scientific Laboratory Supplies, Wilford, Nottingham, UK), and cold and warm thresholds were evaluated on the dorsolateral aspect of the left foot, using the TSA-II NeuroSensory Analyser (Medoc Ltd., Ramat-Yishai, Israel). Electrodiagnostic studies were performed

using a Dantec Keypoint system (Dantec Dynamics Ltd, Bristol, UK) equipped with a DISA temperature regulator to keep limb temperature constantly between 32°C and 35°C. Sural sensory nerve conduction velocity (SSNCV), sural sensory nerve amplitude (SSNamp), peroneal motor nerve conduction velocity (PMNCV), and peroneal motor nerve amplitude (PMNamp) were assessed by a consultant neurophysiologist.

The Toronto Diabetic Neuropathy Expert Group<sup>33</sup> recommendation was used to identify clinically detectable DSPN: (1) abnormal nerve conduction—a PMNCV of <42 m/s; (2) a symptom or sign of neuropathy, defined as one of the following: diabetic neuropathy symptom score of 1 or more out of 4 or neuropathy disability score of 3 or more out of 10.

## Manual and Automated Corneal Nerve Quantification

CCM images were captured using the Heidelberg Retina Tomograph III Rostock Cornea Module (Heidelberg Engineering GmbH, Heidelberg, Germany),<sup>21,36</sup> as shown in Figure 1. Each image is 384 × 384 pixels with a pixel size of 1.0417 μm. Six images of the subbasal nerve plexus from the right and left eyes were selected for analysis using purpose-written, proprietary software. CNFD (number of main fibers per mm<sup>2</sup>), CNFL (total length of main fibers and branches per mm<sup>2</sup>), and CNBD (number of branches per mm<sup>2</sup>)<sup>21,36</sup> were quantified using manual (CCMetrics; M.A. Dabbah, Imaging Science, University of Manchester) and automated (ACCMetrics) software.<sup>19</sup> The FD measurement is fully automated and consists of a nerve fiber detection step based on a machine-learning method<sup>37</sup> (Fig. 1). As shown in Figure 1, most of the nerve fibers can be robustly detected, even with a noisy background, and a previous study has validated the utility of this method.<sup>37</sup> The nerve fiber FD measures the structure complexity as a ratio of the change in detail to the change in scale.<sup>32</sup> For the implementation of FD in this study, it is calculated using a box-counting method based on the detected nerve fibers from the CCM images.<sup>38</sup> Different-sized boxes (size of 1 × 1, 2 × 2, 4 × 4...2<sup>8</sup> × 2<sup>8</sup>) are used to check each pixel location in the image. If any part of the detected nerve fiber is within a box, the number of boxes for this particular size box increases by 1. A set of points can be plotted based on the number of boxes against the corresponding box sizes. A line is then fitted to these points using the least square method, where the slope of the line is the FD value. Intuitively, the slope of the line is larger when a larger number of small boxes are counted, indicating a more complicated structure. A high FD value corresponds to an evenly distributed complex nerve fiber structure that likely belongs to a healthy subject. In contrast, fewer distorted nerve fibers results in a lower FD value that may reflect abnormality. The automated corneal nerve fiber fractal dimension (ACNFrD) measurement is now included in our automated nerve fiber quantification software, which is freely available from a dedicated Web site via the University of Manchester portal.<sup>39</sup> To assess the diagnostic ability of the standard corneal nerve metrics (CNFD, CNBD, CNFL) with ACNFrD for DSPN, we compared control subjects to diabetic subjects with and without DSPN.

### Statistical Analysis

Statistical analysis and the receiver operating characteristic (ROC) curves were performed and generated using MATLAB (version R2012a, The MathWorks, Inc., Natick, MA, USA). One-way ANOVA (nonparametric Kruskal-Wallis) was used to evaluate within- and between-group differences (control versus no DSPN versus DSPN). A *P* < 0.05 was considered significant. Area under the ROC curve (AUC) values, 95% confidence

**TABLE 1.** Clinical Demographic Results and Neuropathy Assessment in Control Subjects and Type 1 Diabetic Patients Without (DSPN [−]) and With (DSPN [+]) Neuropathy

Variable	Control, <i>n</i> = 84	DSPN(−), <i>n</i> = 63	DSPN(+), <i>n</i> = 29
Age	46 ± 15	44 ± 15	63 ± 12
Neuropathy disability score*	0.4 ± 1.2	1.5 ± 2.0§	6.7 ± 2.3§
Duration of diabetes, y	N/A	20.0 ± 11.1	19.9 ± 11.7
Glycated hemoglobin	5.6 ± 0.3	8.3 ± 1.4	8.6 ± 1.5
HbA <sub>1c</sub> , %/mmol/mol‡	37.4 ± 3.5	63.9 ± 21.2§	70.4 ± 16.0§
Body mass index, kg/m <sup>2</sup> *	25.2 ± 4.9	26.4 ± 4.8	27.0 ± 3.6§
Total cholesterol, mM*	5.0 ± 0.9	4.3 ± 0.9§	4.5 ± 0.9§
HDL, mM	1.5 ± 0.4	1.6 ± 0.5	1.7 ± 0.4
Triglycerides, mM	1.4 ± 0.7	1.3 ± 0.7	1.4 ± 0.8
Blood pressure systolic†/diastolic, mm Hg	126.0 ± 17.8/71.4 ± 9.7	130.5 ± 18.6§/70.3 ± 9.1	145.2 ± 24.2§  /73.7 ± 10.0
Vibration perception threshold, V‡	5.6 ± 4.6	8.5 ± 6.5	28.8 ± 12.7§
Warm sensation threshold, °C†	36.6 ± 2.8	38.5 ± 4.0§	43.3 ± 4.7§
Cold sensation threshold, °C†	28.5 ± 1.9	26.8 ± 2.9§	19.0 ± 9.8§
Peroneal motor nerve conduction velocity, m/s‡	49.3 ± 3.3	43.7 ± 3.1§	31.5 ± 8.8§
Sural sensory nerve conduction velocity, m/s‡	51.1 ± 4.1	45.1 ± 4.7§	36.0 ± 6.9§
Peroneal motor nerve amplitude, mV‡	5.4 ± 2.1	5.3 ± 7.0	1.2 ± 1.4§
Sural sensory nerve amplitude, μV‡	21.4 ± 9.7	11.8 ± 6.8§	3.3 ± 3.2§
Manual corneal nerve fiber density, no./mm <sup>2</sup> ‡	36.17 ± 6.2	27.7 ± 7.9§	17.4 ± 9.9§
Manual corneal nerve branch density, no./mm <sup>2</sup> *	87.1 ± 36.7	57.4 ± 31.3§	45.6 ± 31.7§
Manual corneal nerve fiber length, mm.mm <sup>2</sup> ‡	25.6 ± 5.3	20.1 ± 5.3§	14.6 ± 8.2§
Automated corneal nerve fiber density, no./mm <sup>2</sup> ‡	28.9 ± 6.9	21.9 ± 7.6§	13.3 ± 8.7§
Automated corneal nerve branch density, no./mm <sup>2</sup> ‡	38.7 ± 17.7	25.9 ± 17.5 §	16.0 ± 15.5§
Automated corneal nerve fiber length, mm.mm <sup>2</sup> ‡	16.9 ± 3.4	13.3 ± 3.7§	8.7 ± 4.7§
Automated corneal nerve fractal dimension‡	1.50 ± 0.02	1.45 ± 0.05§	1.40 ± 0.07§

Results are expressed as mean ± SD, statistically significant differences using ANOVA/Kruskal-Wallis. N/A, not applicable for this group.

\*  $P < 0.05$ .

†  $P < 0.001$ .

‡  $P < 0.0001$  post hoc results for DSPN(+) significantly different from control subjects and DSPN(−).

§ Control subjects.

|| DSPN(−).

intervals, and sensitivity/specificity both at the equal error rate point and at the threshold of 2 standard deviations below the mean of the control group were calculated and compared.<sup>40</sup>

## RESULTS

### Demographic, Metabolic, and Anthropometric Assessment

Demographic, anthropometric, and metabolic measurements in patients with diabetes and control subjects are summarized in Table 1. Age was comparable, but HbA<sub>1c</sub> was significantly higher in diabetic patients compared with control subjects, with no difference between patients with and without DSPN. Body mass index was significantly higher in diabetic patients with DSPN compared to controls. Total cholesterol was significantly lower in diabetic patients with and without DSPN, while HDL and triglycerides did not differ between groups. Systolic blood pressure was significantly higher in diabetic patients with and without DSPN, compared to control subjects.

### Neurologic Assessment

The neuropathy disability score was significantly higher in patients with DSPN compared to control subjects.

### Quantitative Sensory Testing

The VPT was significantly higher in patients with DSPN compared to patients without DSPN and control subjects. Warm sensation threshold was significantly higher while cold

sensation threshold was lower in patients with and without DSPN compared to control subjects.

### Electrophysiology

PMNCV, SSNC, and SSNamp were significantly reduced in diabetic patients with and without DSPN compared to controls; PMNCV, SSMCV, PMNamp, and SSNamp were significantly reduced in diabetic patients with and without DSPN compared to controls and in diabetic patients with DSPN compared to patients without DSPN.

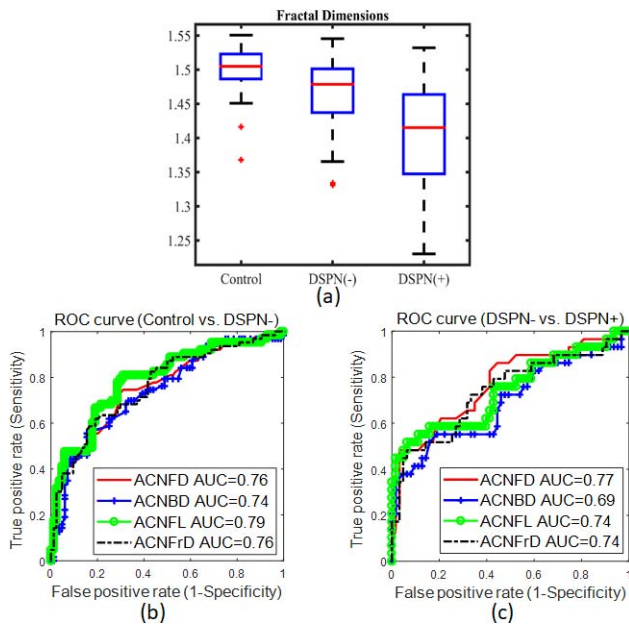
### Manual CCM

MCNFD was significantly reduced in diabetic patients with ( $P < 0.0001$ ) and without ( $P < 0.0001$ ) DSPN compared to control subjects and was reduced in patients with DSPN compared to patients without DSPN ( $P < 0.0001$ ) (Table 1). MCNBD was significantly reduced in diabetic patients with and without neuropathy ( $P < 0.0001$ ) compared to control subjects. MCNFL was significantly reduced in diabetic patients with ( $P < 0.0001$ ) and without ( $P < 0.0001$ ) DSPN compared to control subjects and was reduced in diabetic patients with DSPN compared to patients without DSPN ( $P = 0.001$ ).

### Automated CCM

Automated corneal nerve fiber density (ACNFD), automated corneal nerve fiber length (ACNFL), and ACNFrD were all significantly reduced in diabetic patients with ( $P < 0.0001$ ) and without ( $P < 0.0001$ ) DSPN compared to control subjects and were further reduced in diabetic patients with DSPN compared





**FIGURE 2.** (a) Box plot of fractal dimension values for control, DSPN(-), and DSPN(+) groups. (b) ROC curves of ACNFD, ACNBD, ACNFL, and ACNFrD for discriminating control from DSPN(-). (c) ROC curves of ACNFD, ACNBD, ACNFL, and ACNFrD for discriminating DSPN(-) from DSPN(+).

to patients without DSPN ( $P < 0.0001$ ). Automated corneal nerve branch density (ACNBD) was significantly reduced in diabetic patients with ( $P < 0.0001$ ) and without ( $P < 0.0001$ ) DSPN compared to control subjects and was reduced in diabetic patients with DSPN compared to patients without DSPN ( $P = 0.002$ ). The box plots shown in Figure 2a indicate FD values decreasing significantly from the control group to the DSPN(-) group ( $P < 0.0001$ ) and from the DSPN(-) group to the DSPN(+) group ( $P < 0.0001$ ).

**ROC Analysis**

Diabetic patients were divided into two groups: no DSPN(-) ( $n = 63$ ) and DSPN(+) ( $n = 29$ ). Table 2 shows the AUC values, 95% confidence intervals, and sensitivity/specificity at the equal error rate point on the ROC curve for both manual and automated CCM features. The highest AUC values among the manual and automated CCM measures were obtained for CNFD, with AUC values of 0.79 and 0.77, respectively. The areas under the ROC curve for ACNFrD for discriminating control from DSPN(-) and DSPN(-) from DSPN(+) are 0.76 and 0.74, respectively (Figs. 2b, 2c). There was no significant

difference between the ROC curves comparing ACNFrD to ACNFD ( $P = 0.30$ ), ACNBD ( $P = 0.21$ ), and ACNFL ( $P = 0.50$ ) for discriminating control from DSPN(-) (Fig. 2c). There were no statistically significant differences between the ROC curves for ACNFrD compared to ACNFD ( $P = 0.50$ ), ACNBD ( $P = 0.40$ ), and ACNFL ( $P = 0.35$ ) for discriminating DSPN(-) from DSPN(+).

**DISCUSSION**

Objective surrogate endpoints of diabetic neuropathy that accurately detect early disease and quantify disease progression and measure therapeutic response are required.<sup>2</sup> Small fiber neuropathy is implicated in a number of clinically relevant outcomes including neuropathic pain,<sup>41</sup> erectile dysfunction,<sup>42</sup> altered gait,<sup>43</sup> and foot ulceration.<sup>44</sup> Although IENFD has been proposed as a valid measure of diabetic neuropathy,<sup>12</sup> the invasive nature of skin biopsy limits its practical use as a diagnostic test.

CCM is a rapid, noninvasive ophthalmic imaging technique that can quantify small nerve fiber degeneration and regeneration in patients with diabetic neuropathy<sup>6,15,45-48</sup> and that has been related to the severity of diabetic neuropathy.<sup>14,21,22,47</sup> Automated subbasal corneal nerve image analysis allows rapid quantification of corneal nerve fiber degeneration,<sup>20,21,49</sup> with comparable diagnostic efficiency to manual quantification.<sup>50</sup> Previous reviews have highlighted the extensive diabetes-related complications in the cornea<sup>51-53</sup> and have also shown that corneal nerve loss occurs in patients without diabetic retinopathy and significantly worsens in those with diabetic retinopathy.<sup>54-56</sup> Moreover, we have also recently shown that a reduction in corneal nerve fiber length predicts worsening of diabetic retinopathy.<sup>57</sup> CCM has also been deployed to assess nerve regeneration in clinical trials evaluating new therapies in sarcoid and diabetic neuropathy<sup>58,59</sup> and after simultaneous pancreas and kidney transplantation.<sup>17</sup>

This is the first study to assess the diagnostic utility of corneal nerve fractal dimension. We show that ACNFrD is comparable to CNFD, CNBD, and CNFL in diagnosing patients with and without diabetic neuropathy. However, we believe that the additional utility of this measure may arise by characterizing the structural complexity of the corneal nerves, to provide an additional means of differentiating patients with neuropathies of different etiologies including amyloid neuropathy,<sup>23</sup> CMT1A,<sup>24</sup> chronic inflammatory demyelinating polyneuropathy,<sup>26,25</sup> and HIV.<sup>27</sup> It may also help to identify patterns of subbasal corneal nerve loss associated with central neurodegenerative conditions, including motor neuron disease,<sup>28</sup> Parkinson's disease,<sup>29</sup> multiple sclerosis,<sup>30</sup> and stroke.<sup>60</sup>

A limitation of the present study is the relatively small number of patients with established neuropathy. However, we

**TABLE 2.** AUC, 95% Confidence Interval Values, and Sensitivity/Specificity for Manual and Automated CCM for the Diagnosis of DSPN(+) From DSPN(-)

CCM	AUC	95% Confidence Interval	Sensitivity/Specificity at Equal Error Rate	Sensitivity/Specificity at Mean ± 2 SD (Threshold)
Manual corneal nerve fiber density	0.7890	[0.68 0.89]	0.72	0.79/0.71 (23.8)
Manual corneal nerve fiber length	0.7137	[0.59 0.83]	0.65	0.55/0.86 (14.9)
Manual corneal nerve branch density	0.6136	[0.49 0.74]	0.59	0.17/0.96 (13.8)
Automated corneal nerve fiber density	0.7720	[0.65 0.87]	0.65	0.63/0.79 (15.1)
Automated corneal nerve fiber length	0.7435	[0.63 0.86]	0.62	0.62/0.83 (10.2)
Automated corneal nerve branch density	0.6901	[0.56 0.80]	0.58	0.24/0.98 (3.3)
Automated corneal nerve fractal dimension	0.7378	[0.62 0.85]	0.65	0.61/0.78 (1.45)

have introduced and evaluated the clinical utility of ACNFrD and shown that it is comparable to established CCM parameters in identifying patients with and without diabetic neuropathy. Further work is required to confirm the utility of ACNFrD in differentiating other peripheral and central neurodegenerative conditions.

### Acknowledgments

The authors thank Mitra Tavakoli for undertaking CCM and Hassan Fadavi for performing neuropathy assessments in a proportion of subjects.

Supported by the Manchester Comprehensive Local Research Network, the National Institute for Health Research/Wellcome Trust Clinical Research Facility in Manchester, National Institutes of Health (R105991), and Juvenile Diabetes Research Foundation International (27-2008-362).

Disclosure: **X. Chen**, None; **J. Graham**, None; **I.N. Petropoulos**, None; **G. Ponirakis**, None; **O. Asghar**, None; **U. Alam**, None; **A. Marshall**, None; **M. Ferdousi**, None; **S. Azmi**, None; **N. Efron**, None; **R.A. Malik**, None

### References

- Abbott CA, Malik RA, van Ross ER, Kulkarni J, Boulton AJ. Prevalence and characteristics of painful diabetic neuropathy in a large community-based diabetic population in the U.K. *Diabetes Care*. 2011;34:2220-2224.
- Dyck PJ, Norell JE, Tritschler H, et al. Challenges in design of multicenter trials: end points assessed longitudinally for change and monotonicity. *Diabetes Care*. 2007;30:2619-2625.
- Malik RA. Why are there no good treatments for diabetic neuropathy? *Lancet Diabetes Endocrinol*. 2014;2:607-609.
- Boulton AJ, Kempner P, Ametov A, Ziegler D. Whither pathogenetic treatments for diabetic polyneuropathy? *Diabetes Metab Res Rev*. 2013;29:327-333.
- Dyck PJ, Herrmann DN, Staff NP. Assessing decreased sensation and increased sensory phenomena in diabetic polyneuropathies. *Diabetes*. 2013;62:3677-3686.
- Malik RA. Which test for diagnosing early human diabetic neuropathy? *Diabetes*. 2014;63:2206-2208.
- Breiner A, Lovblom LE, Perkins BA, Bril V. Does the prevailing hypothesis that small-fiber dysfunction precedes large-fiber dysfunction apply to type 1 diabetic patients? *Diabetes Care*. 2014;37:1418-1424.
- Dyck PJ, Argyros B, Russell JW, et al. Multicenter trial of the proficiency of smart quantitative sensation tests. *Muscle Nerve*. 2014;49:645-653.
- Lauria G, Lombardi R. Small fiber neuropathy: is skin biopsy the holy grail? *Curr Diab Rep*. 2012;12:384-392.
- Hoeijmakers JG, Faber CG, Lauria G, Merkies IS, Waxman SG. Small-fiber neuropathies—advances in diagnosis, pathophysiology and management. *Nat Rev Neurol*. 2012;8:369-379.
- Polydefkis M, Hauer P, Sheth S, Sirdofsky M, Griffin JW, McArthur JC. The time course of epidermal nerve fiber regeneration: studies in normal controls and in people with diabetes, with and without neuropathy. *Brain*. 2004;127:1606-1615.
- Malik R, Veves A, Tesfaye S, et al. Small fiber neuropathy: role in the diagnosis of diabetic sensorimotor polyneuropathy. *Diabetes Metab Res Rev*. 2011;27:678-684.
- Malik RA, Kallinikos P, Abbott CA, et al. Corneal confocal microscopy: a non-invasive surrogate of nerve fiber damage and repair in diabetic patients. *Diabetologia*. 2003;46:683-688.
- Quattrini C, Tavakoli M, Jeziorska M, et al. Surrogate markers of small fiber damage in human diabetic neuropathy. *Diabetes*. 2007;56:2148-2154.
- Pritchard N, Edwards K, Dehghani C, et al. Longitudinal assessment of neuropathy in type 1 diabetes using novel ophthalmic markers (LANDMark): study design and baseline characteristics. *Diabetes Res Clin Pract*. 2014;104:248-256.
- Asghar O, Petropoulos IN, Alam U, et al. Corneal confocal microscopy detects neuropathy in subjects with impaired glucose tolerance. *Diabetes Care*. 2014;37:2643-2646.
- Tavakoli M, Mitu-Pretorian M, Petropoulos IN, et al. Corneal confocal microscopy detects early nerve regeneration in diabetic neuropathy after simultaneous pancreas and kidney transplantation. *Diabetes*. 2013;62:254-260.
- Chen X, Graham J, Dabbah M, et al. Small nerve fiber quantification in the diagnosis of diabetic sensorimotor polyneuropathy: comparing corneal confocal microscopy with intraepidermal nerve fiber density. *Diabetes Care*. 2015;38:1138-1144.
- Dabbah MA, Graham J, Petropoulos I, Tavakoli M, Malik RA. Dual-model automatic detection of nerve-fibers in corneal confocal microscopy images. *Med Image Comput Comput Assist Interv*. 2010;13:300-307.
- Dabbah MA, Graham J, Petropoulos IN, Tavakoli M, Malik RA. Automatic analysis of diabetic peripheral neuropathy using multi-scale quantitative morphology of nerve fibers in corneal confocal microscopy imaging. *Med Image Anal*. 2011;15:738-747.
- Petropoulos IN, Alam U, Fadavi H, et al. Rapid automated diagnosis of diabetic peripheral neuropathy with in vivo corneal confocal microscopy. *Invest Ophthalmol Vis Sci*. 2014;55:2071-2078.
- Alam U, Jeziorska M, Petropoulos I, et al. Diagnostic utility of corneal confocal microscopy and intra-epidermal nerve fiber density in diabetic neuropathy. *PLoS One*. 2017;12:e0180175.
- Rousseau A, Cauquil C, Dupas B, et al. Potential role of in vivo confocal microscopy for imaging corneal nerves in transthyretin familial amyloid polyneuropathy. *JAMA Ophthalmol*. 2016;134:983-989.
- Tavakoli M, Marshall A, Banka S, et al. Corneal confocal microscopy detects small-fiber neuropathy in Charcot-Marie-Tooth disease type 1A patients. *Muscle Nerve*. 2012;46:698-704.
- Stettner M, Hinrichs L, Guthoff R, et al. Corneal confocal microscopy in chronic inflammatory demyelinating polyneuropathy. *Ann Clin Transl Neurol*. 2015;3:88-100.
- Rajabally Y, Stettner M, Kieseier B, Hartung H, Malik R. CIDP and other inflammatory neuropathies in diabetes - diagnosis and management. *Nat Rev Neurol*. 2017;13:599-611.
- Kemp H, Petropoulos I, Rice A, et al. Use of corneal confocal microscopy to evaluate small nerve fibers in patients with human immunodeficiency virus. *JAMA Ophthalmol*. 2017;135:795-800.
- Ferrari G, Grisan E, Scarpa F, et al. Corneal confocal microscopy reveals trigeminal small sensory fiber neuropathy in amyotrophic lateral sclerosis. *Front Aging Neurosci*. 2014;16:278.
- Kass-Iliyya L, Leung M, Marshall A, et al. The perception of affective touch in Parkinson's disease and its relation to small fiber neuropathy. *Eur J Neurosci*. 2017;45:232-237.
- Petropoulos I, Kamran S, Li Y, et al. Corneal confocal microscopy: an imaging endpoint for axonal degeneration in multiple sclerosis. *Invest Ophthalmol Vis Sci*. 2017;58:3677-3681.
- Bitirgen G, Akpinar Z, Malik R, Ozkagnici A. Use of corneal confocal microscopy to detect corneal nerve loss and increased dendritic cells in patients with multiple sclerosis. *JAMA Ophthalmol*. 2017;135:777-782.

32. Falconer K. *Fractal Geometry: Mathematical Foundations and Applications*. 3rd ed. New York: Wiley; 2013.
33. Tesfaye S, Boulton AJ, Dyck PJ, et al. Diabetic neuropathies: update on definitions, diagnostic criteria, estimation of severity, and treatments. *Diabetes Care*. 2010;33:2285–2293.
34. Young MJ, Boulton AJ, MacLeod AF, Williams DR, Sonksen PH. A multicentre study of the prevalence of diabetic peripheral neuropathy in the United Kingdom hospital clinic population. *Diabetologia*. 1993;36:150–154.
35. Meijer JW, Smit AJ, Sonderer EV, Groothoff JW, Eisma WH, Links TP. Symptom scoring systems to diagnose distal polyneuropathy in diabetes: the Diabetic Neuropathy Symptom score. *Diabet Med*. 2002;19:962–965.
36. Petropoulos IN, Manzoor T, Morgan P, et al. Repeatability of in vivo corneal confocal microscopy to quantify corneal nerve morphology. *Cornea*. 2013;32:e83–e89.
37. Chen X, Graham J, Dabbah M, Petropoulos I, Tavakoli M, Malik R. An automatic tool for quantification of nerve fibers in corneal confocal microscopy images. *IEEE Trans Biomed Eng*. 2017;64:786–794.
38. Smith JT, Lange G, Marks W. Fractal methods and results in cellular morphology—dimensions, lacunarity and multifractals. *J Neurosci Methods*. 1997;69:123–136.
39. University of Manchester. Early Neuropathy Assessment (ENA) software. Available at: <http://research.bmh.manchester.ac.uk/ena/ACCMetricsuserinstructions/>. Accessed February 1, 2018.
40. Hanley J, McNeil B. The meaning and use of the area under a Receiver Operating Characteristic (ROC) curve. *Radiology*. 1982;143:29–36.
41. Marshall A, Lee-Kubli C, Azmi S, et al. Spinal disinhibition in experimental and clinical painful diabetic neuropathy. *Diabetes*. 2017;66:1380–1390.
42. Azmi S, Ferdousi M, Alam U, et al. Small-fiber neuropathy in men with type 1 diabetes and erectile dysfunction: a cross-sectional study. *Diabetologia*. 2017;60:1094–1101.
43. Almurdhhi M, Brown S, Bowling F, et al. Altered walking strategy and increased unsteadiness in participants with impaired glucose tolerance and type 2 diabetes relates to small-fiber neuropathy but not vitamin D deficiency. *Diabet Med*. 2017;34:839–845.
44. Pop-Busui R, Boulton A, Feldman E, et al. Diabetic neuropathy: a position statement by the American Diabetes Association. *Diabetes Care*. 2017;40:136–154.
45. Tavakoli M, Petropoulos IN, Malik RA. Corneal confocal microscopy to assess diabetic neuropathy: an eye on the foot. *J Diabetes Sci Technol*. 2013;7:1179–1189.
46. Ziegler D, Papanas N, Zhivov A, et al. Early detection of nerve fiber loss by corneal confocal microscopy and skin biopsy in recently diagnosed type 2 diabetes. *Diabetes*. 2014.
47. Sivaskandarajah GA, Halpern EM, Lovblom LE, et al. Structure-function relationship between corneal nerves and conventional small-fiber tests in type 1 diabetes. *Diabetes Care*. 2013;36:2748–2755.
48. Halpern EM, Lovblom LE, Orlov S, Ahmed A, Bril V, Perkins BA. The impact of common variation in the definition of diabetic sensorimotor polyneuropathy on the validity of corneal in vivo confocal microscopy in patients with type 1 diabetes: a brief report. *J Diabetes Complications*. 2013;27:240–242.
49. Dehghani C, Pritchard N, Edwards K, Russell AW, Malik RA, Efron N. Fully automated, semiautomated, and manual morphometric analysis of corneal subbasal nerve plexus in individuals with and without diabetes. *Cornea*. 2014;33:696–702.
50. Scarr D, Lovblom L, Ostrovski I, et al. Agreement between automated and manual quantification of corneal nerve fiber length: implications for diabetic neuropathy research. *J Diabetes Complications*. 2017;31:1066–1073.
51. Bikbova G, Oshitari T, Baba T, Yamamoto S. Neuronal changes in the diabetic cornea: perspectives for neuroprotection. *Biomed Res Int*. 2016;2016:5140823.
52. Ljubimov AV. Diabetic complications in the cornea. *Vision Res*. 2017;139:138–152.
53. Shih KC, Lam KS, Tong L. A systematic review on the impact of diabetes mellitus on the ocular surface. *Nutr Diabetes*. 2017;7:e251.
54. Bitirgen G, Ozkagnici A, Malik R, Kerimoglu H. Corneal nerve fiber damage precedes diabetic retinopathy in patients with type 2 diabetes mellitus. *Diabet Med*. 2014;31:431–438.
55. Petropoulos I, Green P, Chan A, et al. Corneal confocal microscopy detects neuropathy in patients with type 1 diabetes without retinopathy or microalbuminuria. *PLoS One*. 2015;10:e0123517.
56. Szalai E, Deák E, Módis IJ, et al. Early corneal cellular and nerve fiber pathology in young patients with type 1 diabetes mellitus identified using corneal confocal microscopy. *Invest Ophthalmol Vis Sci*. 2016;57:853–858.
57. Srinivasan S, Dehghani C, Pritchard N, et al. Ophthalmic and clinical factors that predict four-year development and worsening of diabetic retinopathy in type 1 diabetes. *J Diabetes Complications*. 2017;32:67–74.
58. Culver D, Dahan A, Bajorunas D, et al. Cibinetide improves corneal nerve fiber abundance in patients with sarcoidosis-associated small nerve fiber loss and neuropathic pain. *Invest Ophthalmol Vis Sci*. 2017;58:BI052–BI060.
59. Lewis E, Perkins B, Lovblom L, Bazinet R, Wolever T, Bril V. Effect of omega-3 supplementation on neuropathy in type 1 diabetes: a 12-month pilot trial. *Neurology*. 2017;88:2294–2301.
60. Khan A, Akhtar N, Kamran S, et al. Corneal confocal microscopy detects corneal nerve damage in patients admitted with acute ischemic stroke. *Stroke*. 2017;48:3012–3018.