

**IITA**

*Research to Nourish Africa*

IITA Annual Report 2006

# Annual Report 2006



**IITA**  
*Research to Nourish Africa*

ISSN 0331 4340

International Institute of Tropical Agriculture - Institut international d'agriculture tropicale - [www.iita.org](http://www.iita.org)

International Mailing address (UK)  
c/o Lambourn (UK) Limited,  
Carolyn House 26 Dingwall Road,  
Croydon, CR9 3EE, England

© International Institute of Tropical Agriculture  
ISSN 0331 4340

Cover design, typesetting, layout by IITA

## Vision

To be one of Africa's leading research partners in finding solutions for hunger and poverty

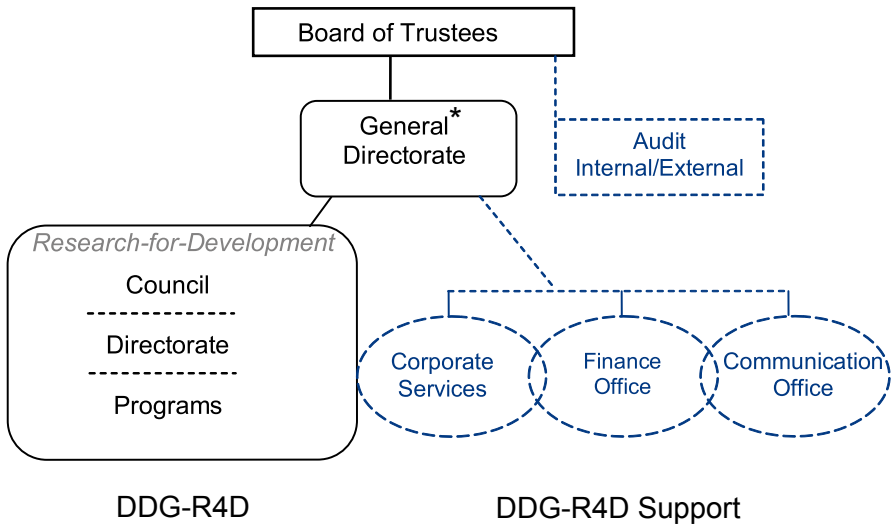


## Who we are

### About IITA

The International Institute of Tropical Agriculture (IITA) is an Africa-based international research-for-development organization, established in 1967, and governed by a Board of Trustees. We have more than 100 international scientists based in various IITA stations across Africa. This network of scientists is dedicated to the development of technologies that reduce producer and consumer risk, increase local production, and generate wealth. We are supported by over 30 donors, primarily members of the Consultative Group for International Agricultural Research (CGIAR, [www.cgiar.org](http://www.cgiar.org)).

### Organization Chart



\* DG, DDG R4D, DDG R4D Support

## Contents

Vision	i
Who we are	ii
Introduction	2
Research highlights	12
Graduate research completed at IITA in 2006	28
Financial information	34
Publications	38
Governing board	68
Scientists	70
Abbreviations used in this report	74
IITA locations	76

## Introduction



IITA's research-for-development activities will impact wealth, health, and food security from agricultural production systems, consider equity across gender and social strata and the sustainable management of natural resources. The expected outcomes of its seven programs outlined below, relate to increases in investment, productivity, availability, quality, and the processing and marketing of products. They will enhance the use of genetic resources and improve knowledge of the different social, economic, and ecological systems. Meta-analysis of the research-for-development approaches will translate into additional International Public Goods (IPGs) to improve future science.

### Agriculture and Health

Agriculture and health are related in many ways. Malnutrition, often caused by the lack of micronutrients affects vulnerable groups. Poor food quality and safety, caused, for example, by mycotoxins, endanger consumers and impose barriers to trade between Africa and important export markets. Widespread diseases affect the labor force, agricultural productivity, and therefore, food security and livelihoods.

### Objectives

- To improve nutrition quality by providing a higher diversity and density of micronutrients in human diets and reducing food toxins
- To increase the knowledge on nutrition patterns and distribution of food and nutrients within social systems
- To research ways to overcome labor force shortages in farms and households through appropriate technologies
- The specific impacts this project is aiming at are primarily healthier people in sub-Saharan Africa, equity across gender and social strata, as well as better science-based development.

### Agrobiodiversity

The genetic base of the world's food crops is shrinking as genetic resources are being lost to changing tastes, industrialization, urbanization, mechanization and commercialization of agriculture. Conservation and use of biodiversity are central to research on the improvement of food crops and the development of sustainable systems of farming for increased production. Genetic and functional diversity of plants are the building blocks of improved agricultural performance and production. Genetic diversity can introduce useful new traits and

create new heterotic combinations. These in turn can contribute to better crop yields and enhance adaptability of finished varieties by providing appropriate and useful genetic stocks for breeding programs. The wild relatives of crop plants are a reservoir of potentially important genes for crop improvement, especially for tolerance or resistance to biotic and abiotic stresses, but also for other important adaptive traits. However, wild relatives are underrepresented in IITA collections. There is a need to collect, conserve, evaluate, characterize, document, and distribute plant genetic resources of a wide range of crops and their wild relatives, conserve and improve the contribution of neglected underutilized genetic resources to enhance the future income, health, and nutrition of the poor. In the short term, germplasm of vegetatively propagated crops is usually maintained as tubers, roots, bulbils, cuttings, and in the field. Maintaining germplasm collections in the field is expensive in labor, land, and space, with the risk of losing valuable material to pest attack and unforeseen problems. In vitro reduced-growth storage methods are used routinely at IITA for short- to medium-term storage of germplasm of yams, cassava, plantain, and banana risking contamination, accidental loss or reduced genetic stability.

The key objectives of this project are the efficient long-term conservation and use of genetic resources of staple and underutilized crop species, and increased efficiency and effectiveness of research aimed at exploiting their potential.

IITA collects and preserves several hundred accessions of food crops in trust for the international community using the best



*Children need to be assured of adequate nutrition for healthy growth and development*



practices available. These accessions are characterized, evaluated, documented, systematically cleaned of pests, and certified for international distribution. Core sets are identified for even more detailed characterization to maximize the use of the collections.

The collections are the basis for genetic diversity analyses to elucidate relationships among genomes and offer opportunities for gene mining. Additional genetic variation in wild relatives of food crops and unadapted crop germplasm is identified and made available to interested breeders. Studies are conducted to develop more efficient procedures for medium- to long-term storage, the maintenance of germplasm health, and safe movement for a range of species.

### **Banana and Plantain systems**

Grown by smallholder farmers, bananas and plantains are major food staples and two of the leading cash crops, in East, Central and West Africa. Because of its cash crop status, farmers are more likely to adopt high-level management technologies to intensify production and yet sustain the natural resource base in the systems. Much progress can be realized with more profitable and sustainable banana systems. Since the 1970s, widespread reports of low and declining banana yields have been attributed to soil degradation, pests, poor crop husbandry, and drought. In this project, the hypothesis is that these constraints are, to a large extent, interlinked. The overall purpose of the banana and plantain project is to enhance the performance of banana and plantain systems within smallholder farms in SSA.

### **Objectives**

The main project objectives are:

- To increase knowledge on ecosystems, social systems, and commodity chains
- To research ways to improve profitability
- To improve the quality of banana- and plantain-based food products

The most prominent impacts expected are wealth for banana-based smallholder systems as well as better science-based technologies. Increased wealth is based on research results that yield improved profitability and improved food quality. Better science-based technologies originate from better knowledge on ecosystems, social systems, and commodity chains.

In this project, international public goods will be obtained through research that covers a large and representative range of smallholder

farming systems in Africa. The project, operating across most SSA, covers most geographical zones. It is therefore expected that research results can easily be scaled out across sites, since the test sites have been selected according to their representativity and potential for scaling out.

### **Cereal and Legume Systems**

The savanna is characterized by a growing period of 4–6 months with annual precipitation of 300–1300 mm. Farming systems here have high potential for cereal and legume production and livestock. Demographic pressure and the demand for more food are driving agriculture towards greater intensification. Most crops are produced in a continuous monoculture that steadily depletes the soil's natural resources and lead to lowered soil organic matter content, soil biological diversity, and enhance erosion risk

The problems of soil degradation interact with many biophysical and socioeconomic constraints. that prevent agricultural intensification, lower farm productivity, and encourage unsustainable farming practices with a negative impact on the rural poor, food security, and the environment.

In this project, we hypothesize that the high productivity of cereal and legume systems can be sustained by an integrated use of soil amendments, improved seeds, crop protection products, novel agronomic practices, better postharvest techniques, and the use of laborsaving methods.

Better production and postharvest systems will result in more benefits from the use of higher yielding crop varieties, external soil inputs, and improved agronomic practices. Improving the postharvest system will facilitate processing and marketing of quality crop products, expand their utilization potential, and be a key to greater. Greater support and strengthened institutional capacity will be required to overcome constraints. The project will help by promoting the use of resilient crop varieties, balanced nutrient management practices, integrated pest management practices, improved postharvest technologies, and markets access, and by facilitating technology transfer through strengthening the capacity of service providers.

### **Objectives**

- Develop and facilitate the dissemination of natural resource management technologies that increase productivity in a sustainable manner.

- Facilitate the development of postharvest technologies and market systems that increase the availability of high quality and safe agricultural products.
- Generate knowledge to facilitate the effective management of ecosystems, social systems, and commodity chains.
- Increase research efficiency and effectiveness by enhancing the capacity of national programs to generate and promote improved technologies.
- Develop technologies to improve labor-use efficiency and to reduce drudgery
- Reduce variability in productivity of cereal and legume systems.

The impacts will include improved wealth, better nutrition and food security, and sustainable natural resource management resulting from better science-based development in the savannas. The outputs will benefit all key actors along selected value chains. Farmers benefit from increased access to yield-enhancing and resource-conserving innovations. Processors benefit from the availability of regular supplies of high quality raw materials at competitive prices. Traders benefit from increased trade in diversified crop products. Consumers benefit from the greater availability of a range of higher quality food at affordable prices.

*Soybean and maize mixed and processed as a nutritious food drink*



## High-Value Products

In Africa, tree crops and vegetables play key roles in the poverty reduction strategies. In rural areas, smallholder tree crop systems stimulate export-oriented economic growth through new investment and public–private sector partnerships and contribute significantly to enhancing livelihoods and sustaining biodiversity. In urban and peri-urban areas, indigenous and exotic leafy vegetables (e.g., cabbage, amaranth, African nightshade, and lettuce), fruit vegetables (e.g., tomato, peppers, garden eggs, and aubergine) and root vegetables (e.g., carrot) play key roles in food and nutritional security and poverty reduction. The economic potential and sustainability of high-value agricultural production and marketing systems are severely undermined by diverse constraints. The key challenges in both systems are similar and include the following:

- Maximizing use of biological assets:
- Building national capacity:
- Advocating a development vision for high value products:

This project sets out to address these challenges through research and effective public-private partnerships.

## Objectives

- Develop and facilitate dissemination of natural resource management technologies that increase the productivity of high value cropping systems in a sustainable manner.



*An urban market*

- Facilitate the development of postharvest technologies and market systems that increase the availability of high quality agricultural products.
- Generate knowledge to facilitate effective management of ecosystems.
- Facilitate development of local agroenterprises for cost-effective seed systems and biological plant health management products.
- Explore and develop innovative institutional arrangements to facilitate the dissemination of research processes, methods, and emerging in selected value chains.
- Advise upstream decision-makers on a conducive institutional and policy environment for environmentally sound and socially acceptable high value production systems.

The impacts will include improved wealth from high value agricultural products and sustainability of natural resources resulting from better science-based development. The impacts will be achieved through increased research efficiency and effectiveness, increased availability of high quality agricultural products, informed agroenterprise and research investments, improved knowledge about commodity chains, and increased productivity of high value systems. conditions.

### **Opportunities and Threats**

Agricultural production and research take place in an ever changing environment. Numerous opportunities are arising from economic growth and increasing trade relationships. Income increases drive the demand for high quality raw and processed products. However, pests, diseases and drought impose a continuous threat to food security and livelihoods.

As a research institute operating in this dynamic and volatile environment, IITA has to determine its strategies with the maximum available knowledge on these dynamics. This project aims at identifying and quantifying opportunities and threats beyond research planning in the commodity systems-based projects. It views and analyzes a broad range of environmental, social and economic dynamics, feeds it back for strategic planning within IITA.

### **Objectives**

- To increase knowledge about ecosystems, social systems and commodity chains
- To increase research efficiency and effectiveness

The most significant impact of this project is better science-based development, increased wealth from agricultural products, both primary and processed, and increased food security. These impacts will be achieved through increased research efficiency and effectiveness across all the outputs.

### Root and Tuber Systems

Root and tuber crops are the major subsistence staples in large parts of humid, subhumid SSA, and the midaltitudes. In many areas productivity and yields of root and tuber crops are considerably lower than population growth. Production relies largely on smallholder, slash and burn or other traditional practices. Soil fertility is restored during fallow periods, if possible. All root and tuber crops suffer severe yield losses from a wide range of different pests and diseases, low nutrient availability, inappropriate germplasm, and postharvest technologies. Production practices still lack appropriate levels of mechanization.

Cassava provides affordable foods for the growing urban populations and raw material for starch and livestock feed industry but production costs are comparatively high. Yam is a traditional African crop. Due to consumers' preference of yam over other roots there will be greater demand for yam with increasing incomes in WCA but it has high labor and high soil fertility demands.

Cocoyam and taro play a vital role for women in family food supply and income generation but they have not received sufficient research attention. Large-scale production, mainly of cassava, stimulated by high demand and conducive policies, requires postharvest technologies capable of processing large quantities into quality products. The entire sector then shifts from small-scale household processing to large-scale agro-enterprises. This requires solid knowledge of the commodity chain and the technical equipment. Significant improvements of germplasm for greater yield and disease resistance have been made, and major breakthrough biological control measures have secured future production, especially of cassava. Greater yield will lead to soil nutrient depletion if not accompanied by soil and nutrient management strategies.

The low yields and high production costs are in stark contrast to the economic opportunities. Activities conducted in this project aim at increased productivity, informed agro-enterprise investments and increased efficiency and effectiveness of research to generate additional novel technologies.

The overall impact on farmers, consumers and agro-enterprises of this project is wealth created from root and tuber systems, accompanied by increased food security and improved equity across gender and social strata.

*Sun dried yam tubers to make flour for a local food 'amala'*



## Research highlights





## Agriculture and Health

Fusarium ear rot caused by *Fusarium verticillioides* and fumonisin contamination are major in maize. Field trials in Ikenne and Ibadan (Nigeria) 2003 and 2004 evaluated 103 maize inbred lines for Fusarium ear rot. Two lines (02C14624 and 02C14585) had fumonisin level < 5.0 µg/g across years. These lines can be used directly to develop hybrids, with good levels of resistance to Fusarium ear rot adapted to Central and West Africa and as sources of resistance genes in breeding.

Biological control is one management option to reduce aflatoxin contamination in maize where atoxigenic strains of the fungus *A. flavus* competitively exclude toxigenic strains under field conditions. About 4000 strains of *A. flavus* were screened to identify atoxigenic strains and 14 were selected. Results showed strain La3279 can move effectively from soil to cobs and is an excellent candidate as a biocontrol agent against aflatoxin.

Late and early maturing elite open-pollinated varieties adapted to the lowlands have been converted to Quality Protein Maize (QPM). The partially converted populations had significantly higher protein content than the improved version of a popular QPM variety, Obatanpa. A synthetic variety, SYNIDFO, had a significantly higher tryptophan level than the improved version of Obatanpa but the partially converted varieties had a significantly lower level. S<sub>1</sub> plants will be extracted from each population in 2007 for further screening under the light box to enhance the tryptophan content in the partially converted materials.

IITA is committed to breeding maize varieties and hybrids with enhanced levels of iron, zinc and pro-vitamin A to contribute to improved nutrition, health, and quality of life of rural people. In 2006, 37 hybrids formed from inbred lines selected for β-carotene content, high or low were evaluated for agronomic performance and micronutrient content. Results indicated that hybrids from inbred lines selected for high β-carotene content had higher levels of β-carotene in multiple locations. Some were also agronomically competitive with a commercial hybrid check. Considering the prevailing high genetic variability for β-carotene and pro-vitamin A content in maize, combining complementary carotenoid profiles through breeding will be expected to increase these nutrients to levels significant for human nutrition.

Twenty-two yellow-fleshed and three white-fleshed cassava genotypes were grown in a randomized complete block design with two replications in Nigeria to determine the qualitative and quantitative variability of carotenoids in cassava. The result revealed that 90%

of the carotenoids in cassava are  $\beta$ -carotene. The mean Retinol Activity Equivalent for the genotypes across locations was 0.409, and the genotype 01/1371 had Retinol Activity Equivalent of 0.639. The result from this study has provided information that may be used in determining the amount needed to have a nutritional impact.

The results from 325 accessions of *D. rotundata* screened for tuber ascorbic acid content showed a range of 3.56 to 16.87 mg/100g (fresh weight basis) and an average of  $8.3 \pm 2.26$  (std. dev.); 79 accessions of *D. cayenensis* showed a range of 4.19 to 11.34 mg/100g with an average of  $7.85 \pm 1.29$  (std. dev.); 31 accessions of *D. dumetorum* showed a range of 15.42 to 39.43 mg/100g with an average of  $25.83 \pm 6.29$  (std. dev.); and 25 accessions *D. bulbifera* showed a range of 10.81 to 21.86 mg/100g with an average of  $13.28 \pm 2.52$  (std. dev.). In another study, ascorbic acid and phytate contents were determined in tubers from genotypes of *D. rotundata* and *D. alata* planted at four sites in Nigeria. In *D. rotundata* mean ascorbic acid contents ranged from 7.56 mg/100g at Abuja to 10.22 at Ibadan and mean phytate contents ranged from 5.48 mg/100g at Onne to 12.49 at Ubiaja. Values for *D. alata* ranged from 8.98 mg/100g (fresh basis) at Abuja to 15.31 at Ibadan.

Three yellow-fleshed cassava genotypes were grown in a randomized complete block design with two replications at Ibadan, Nigeria to evaluate the effects of processing on total carotenoids,  $\beta$ -carotene, iron, and zinc retention. The concentration after processing varied depending on the product. Results indicated that boiled cassava retained the highest amount of total carotenoids (73.5%), followed by *gari* (44.9%), raw *fufu* (40.8%), and chips (32.3%); cooked *fufu* (21.5%). Boiled cassava also retained the highest amount of  $\beta$ -carotene (59.9%) followed by *gari* (33.6%), raw *fufu* (32.2%), and chips (15.1%); and least in cooked *fufu* (14.6%) retained least. Boiled cassava also retained the highest amount of iron and zinc. Processing cassava storage roots resulted in a significant reduction in nutrient retention that is depended on the genotype and processing method.

An in vitro digestion/Caco-2 cell model may predict iron bioavailability to humans but direct comparisons are lacking. The objective of the study was to test in vitro differences in iron bioavailability between two maize varieties, directly comparing human and Caco-2 cell results. Results obtained indicated that based on meal analyses, the ACR maize variety had nearly 20% more iron than TZB ( $P < 0.0001$ ). ACR also contained ~25% more zinc ( $P < 0.01$ ) and 7% more phytate ( $P < 0.001$ ) than TZB. Fractional iron absorption from maize meal without

ascorbic acid (AA) was low at approximately 2%. The maize varieties did not differ significantly in either the percentage or total amount of iron absorbed. Adding AA to the meal significantly enhanced iron absorption from approximately 2 to 7% ( $P < 0.0001$ ). Human iron absorption results confirmed Caco-2 cell predictions of AA enhancement with maize.

*Colonized  
maize cobs*



## Agrobiodiversity

This project seeks to contribute to the assurance of food security and sustainability of natural resources through efficient long-term conservation and use of genetic resources of staple and underutilized crop species. The following specific outputs are targeted:

- Germplasm of clonally propagated species collected, preserved, documented and distributed
- Germplasm of seed crop species collected, preserved, documented, and distributed
- Genetic diversity of conserved germplasm described
- Traits transferred to breeding populations from wild species/ unadapted germplasm

The genebank holds over 29 000 accessions comprising cowpea, soybean, bambara groundnut, wild *Vigna* ssp, maize, cassava, yam, banana/plantain, African yam bean, and miscellaneous legumes. The collections are stored in seed-, field- or in vitro-banks, depending on the reproductive biology and agronomic dissemination of the species

For the past two years, efforts have been focused on duplicating clonal germplasm from the field to the *in vitro* collection, with the overall objective of reducing both the maintenance cost and the potential loss of germplasm and of facilitating germplasm distribution (through improved



*Germplasm conservation through multiplication*

sanitation). During this period, 2 017 accessions of cassava, 623 of yam, and 250 of *Musa* spp. were introduced in vitro. In addition, yam and cassava in vitro collections were duplicated for safety in the IITA-Bénin genebank facility, Cotonou. The use of cryopreservation is being considered in an effort to further reduce maintenance costs.

During the past three years, 7 000 accessions of cowpea, 1 000 of Bambara groundnut, 600 of wild *Vigna*, and 1 070 of soybean have been regenerated and processed for storage.

Also, 500 accessions of cowpea, wild *Vigna*, and soybean; and 139 accessions of cassava were certified healthy for international distribution. A total of 2 117 accessions were delivered to requestors. This comprised 1 988 accessions of cowpea, 56 of other *Vigna* species, and 73 of maize.

As part of the assessment of diversity of the cowpea collection, 2 000 accessions were characterized for 14 microsatellite (SSR) markers. In addition, 10 individuals of 100 accessions were screened for variation at 14 SSR loci for a study of variation within accessions. For the collection of *Musa* spp., diversity analysis was carried out on 192 genebank accessions using 25 SSR markers. Similar genotyping was conducted of a core set of yam germplasm (354 accessions) using 23 SSR markers. Ploidy levels of 158 accessions from the yam collection were determined based on DNA flow cytometry.

As part of efforts to introduce desired attributes from various *Dioscorea* species to the key cultivated species, 19 hybrids have been produced between clones of *Dioscorea rotundata* and *D. cayenensis*. Research is continuing to generate hybrids between *D. rotundata* and *D. alata* as a basis for exchanging complementary attributes.

## Banana and Plantain Systems

### **Banana *Xanthomonas* wilt control**

*Xanthomonas* wilt disease (BXW) is the most serious threat to banana production in East and Central Africa. The disease is principally spread by insect vectors and contaminated tools, and through infected planting materials. It started in Uganda in 2001, and has spread to Rwanda, Tanzania, Kenya, and D.R. Congo. Germplasm screening trials have identified some cultivars that did not succumb to infection through moist flower cushions. Once a field is infected it cannot be replanted immediately due to bacteria in the soil. In 2006, efforts were made to

explore the underlying mechanisms of tolerance. Some of the factors were identified, including sap deficiency, which makes cushions dry and unreceptive infection sites low sap pH that is hostile to the bacteria, and viscous nectar that was inaccessible to insects. Activities were carried out in developing protocols for diagnosing the pandemic phase and describing the corresponding response measures. Research was initiated in management of postepidemic phase through community action and appropriate management of infected plants and rehabilitation of banana fields destroyed by BXW infection. Various technologies based on cultural practices were developed that reduce the infection of replanted suckers. Curing corms for at least 3 days after paring or dislodging from the mother mat is now recommended as the most beneficial practice in reducing infection.

Worldwide *Beauveria bassiana* is the most commonly used biopesticide against a variety of insect pests. However, when used as a conventional biopesticide, it tends to be slow-acting, cumbersome, erratic, and expensive at practical application rates in the field. At IITA, we have been investigating whether or not *B. bassiana* can be formulated as an artificial endophyte in banana tissue culture plants. We not only demonstrated, for the first time, that *B. bassiana* can be so used, but also that persistence rates can be very high for prolonged periods of time. More excitingly, various greenhouse experiments have demonstrated that tissue culture plants enhanced with *B. bassiana* consistently reduce banana weevil damage >50%. These amazing results are encouraging as the novel technique is highly cost-effective, targets the most damaging pest stages inside the plant, and removes the problem of having to apply the biological control product themselves. At present, studies are underway to test this technology in farmers' fields.

Induced resistance is the activation of plant defense mechanisms after contact with biotic or abiotic elicitors. Induced resistance can be considered a phenomenon whereby a microorganism applied to the plant elicits a response in those plants that result in a disease-resistant phenotype. Research at IITA has demonstrated induction of phenol production and other plant defense mechanisms upon enhancement of banana with endophytic *Fusarium oxysporum*. Through induction of systemic resistance, *Fusarium oxysporum* protects the banana plant in a way that is similar to mechanisms currently present in resistant banana cultivars. As such, "vaccination" of plants with endophytes can be seen as a complement to current breeding programs, and a highly

flexible tool to tackle the diversity of existing pathotypes and counter emergence of new pathotypes. Collaboration with the University of Pretoria is underway to mine the novel banana genes responsible for induced resistance.

IITA has engaged in a public–private partnership with Agro-Genetic Technologies (AGT), Uganda’s biggest tissue culture producer. IITA provides technical backstopping to tissue culture production and fully exposes endophyte-enhanced technology to AGT; AGT in turn provides IITA with plants at a reduced cost while providing space and human resources to fully integrate the technology in their operation. This partnership has proven to be very effective, and has been a strong impetus for obtaining the necessary quota for on-station and on-farm trials promoting endophyte-enhanced tissue culture technology in Uganda.

*A banana market*



## Cereal and Legume Systems

- Seed treatment with low doses of ALS-inhibiting herbicides, such as imazapyr is one option to control *S. hermonthica*. Inbred lines and experimental hybrids with the herbicide resistance gene and *Striga* resistance have been developed. These hybrids were tested with and without seed treatment under artificial *Striga* infestation at Abuja and Mokwa in Nigeria. Most of the herbicide-resistant hybrids were comparable to a commercial hybrid, Oba Super I, in yield potential in *Striga*-free plots. Promising hybrids were selected for extensive testing in 2007.
- Under severe drought at the reproductive stage, two cultivars were selected as potential drought-resistant cowpea lines which could maintain grain and fodder yields more than 80% of control, though two others were reduced to 20-30%. Two drought resistant lines showed high leaf stomatal conductance when surface soil (0-40 cm) moisture was very low.
- Results of trials at Mokwa and Abuja showed five new QPM varieties, EV DT-Y 2000 STR QPM C0, TZEE-W Pop STR QPM C0, TZE-Y Pop STR QPM C0, TZE-W Pop STR QPM C0, and EV DT-W 99 STR QPM C0 as outstanding in grain yield and *Striga* damage ratings under *Striga*-infested and non-infested conditions.



*Brown and white cowpea for sale*



- The popular but *Striga* susceptible variety DMR ESR-W QPM was the lowest yielding variety under *Striga* infestation but the highest yielding when *Striga*-free.
- Analyses of the radionuclides  $^{137}\text{Cs}$ ,  $^{210}\text{Pb}$  and  $^7\text{Be}$  in soils were done for the first time in Nigeria.  $^7\text{Be}$  is accumulated in the upper 5 cm and  $^{137}\text{Cs}$  in the upper 10 cm of undisturbed soils. Sediments contain much higher concentrations of these fallout nuclides which are useful tracers for measuring soil redistribution in the savanna.
- A participatory evaluation of improved cowpea varieties with 159 farmers in 25 villages was conducted in Maradi and Zinder Regions of Niger Republic. Several of the improved extra-early maturing varieties yielded over 800 kg grain/ha even in areas of complete crop failure due to drought.
- The Nigeria Agriculture and Biotechnology Project assisted the Federal Ministry of Environment to prepare the National Biosafety Policy and Biosafety Bill to be made into the biosafety law for the country. The bill will facilitate the approval procedures for testing and commercialization of bioengineered crop varieties in Nigeria.
- Reducing ant colonies in pineapple fields by trapping and killing the ants will allow a classical biological control against the pineapple mealybug, the vector and cause of Pineapple Mealybug Wilt. Ants in the field disrupt the search behavior of the natural enemy.
- A method for screening soybean germplasm for rust resistance using detached leaves was developed and validated. The assay will accelerate breeding efforts since large populations of genotypes can be screened against different pathogen populations simultaneously.
- A bio-economic farm household production model together with a Multi-Attribute Utility Theory was used to determine differences in farmers' production strategies in the Nigerian NGS. Small groups of generally "richer" farmers were found to follow market production strategies associated with positive soil nutrient balances. The majority of "poorer" farmers have a subsistence production objective with moderate to strong risk-aversion and negative soil nutrient balances.
- A livelihood baseline study on a sample of 800 households indicated widespread poverty (58% of households) and food insecurity in western Kenya. *Striga* inflicted almost equally high damage on maize yields across households, but its impact on poverty is the greatest among households which depend heavily on maize for their livelihoods.

- Aqueous extracts of *Tephrosia vogelii*, *Hyptis suaveolens*, oils of *Azadirachta indica* and *Jatropha curcas*, and Furadan 5G were evaluated for their efficacy in reducing *Mussidia nigricornis* infestation and its damages under field conditions and their oviposition deterrent effect in cages in Bénin. Most eggs were found on untreated ears showing the oviposition deterrent of the extracts and oils. Under field conditions, Furadan and the oils reduced the number of larvae compared to the extracts, which were similar to the control. The oils therefore act as persistent oviposition deterrents and insecticides.
- <sup>13</sup>C isotope discrimination in maize was validated under field conditions as a tool to identify water supply and it revealed a reduction of water stress at critical development stage due to incorporation of *Senna* residues.
- Grain yield of maize increased by 10% after 20 kg P/ha was applied to soybean and by 35% after 40 kg P/ha. Maize grown after late maturing soybean varieties gave higher grain yield than after early maturing varieties. The differences between the soybean varieties were more pronounced at 40 kg P/ha level.
- A Participatory Impact Assessment to evaluate the adoption of improved crop technologies on participating farmers in the savannas of Borno State, Nigeria, revealed that improved maize and soybean varieties had the highest adoption rates. Women farmers have adopted at higher rates than men (maize, 83% and soybean, 68%).
- Al-stress and P deficiency interact to reduce P accumulation in cowpea genotypes. Al-resistant cowpea genotypes release high quantities of malate and citrate from roots for enhanced P accumulation in Al-toxic and P deficient soils.

## High Value Products

Across four States in Nigeria, the aflatoxin content in cocoa bean ranged from 0–5400 ppb with more contamination in samples from Cross River and Edo and less in Taraba. The incidence of toxigenic strains of *Aspergillus flavus* (40%) was lower than that of atoxigenic strains (60%), across all States. These results indicate the need to devise management options to reduce possible aflatoxin contamination in cocoa beans.

Five mango fruit fly species of economic interest in the north of Bénin have been identified for the development of the mango chain

in Bénin and other West African countries. Ecological studies aim to reduce mango fruit flies with IPM tools.

A database of the diversity, distribution, and economic importance of vegetable pests in Bénin was produced.

Three local strains of *Beauveria bassiana* were identified as effective alternatives to toxic pesticides against *Plutella xylostella*, *Hymenia recurvalis*, and *Psara basalis* on leafy vegetables.

Plant parasitic nematodes are important soil-borne pests in Bénin. In 2006, a survey identified not only species of the main nematode group (*Meloidogyne*) but also species never before identified in West Africa or on vegetables but known for high potential damage in Central and North America. Results question current distribution, diagnosis and distribution, and challenge pest management options.

A cocoa pod  
ready for  
harvest



## Opportunities and Threats

A bio-economic farm household simulation model was developed to analyze farmers' production decision-making and its impact on the use of soil fertility resources. It is based on a non-separable farm household model extended with a soil nutrient balance for the three major soil macronutrients N, P, and K. This allows for a detailed analysis of the effect on soil fertility of various production strategies for different types of farmers. At the same time, various household indicators are quantified and trade-offs between various production targets and soil fertility use can be determined. The model has been applied recently in Northern Nigeria (see highlights under Cereals and Legumes).

For the second time in succession, IITA's social scientists organized a mini symposium after the paramount international conference of agricultural economists.

The symposium was organized on four major topics: (1) the broadening agricultural research agenda and resulting scope of agricultural research evaluation, (2) the current situation with respect to practices followed by academic economists and other practitioners in impact assessment, (3) gaps that needed to be filled in our assessment approaches, and (4) some suggested options for meeting current impact assessment needs.

The proceedings of the mini-symposium will be published in the IITA Impact series. Within the framework of the "Crop Crisis Control Project" (C3P), IITA and its collaborators, in particular the Catholic Relief Services (CRS), undertook food security surveys in five East African countries— Burundi, Kenya, Rwanda, Tanzania, and Uganda. The results showed that although households in Western Kenya and large parts of Uganda were food secure, the situation was worse in northern Tanzania, where households lived at the edge of food security, and worse still in Rwanda and Burundi, where food security was permanently at risk due to small-scale farming, biotic and abiotic stresses, and civil unrest.

The results are to be fed into a GIS mapping system and further applied to target measures by the project partner, CRS, that aims at fighting banana bacterial wilt and cassava mosaic disease. CRS informs the rural communities about management measures to counter banana bacterial wilt.

The Plant Pathogen Diagnostic Clinic at IITA Benin was created and resulted in the identification of over 150 pathogens from diseased plant samples from both the public and private sector in the last year

(NARS, SPS regulatory authorities, private growers of various sizes). Its database of live microorganisms has been revised into a format that could be uploaded onto an IITA linked website.

Establishment of West African Pathogen Diagnostic Network. This is linked to the National Plant Diagnostic Service of USA and networks in Central America and East Africa. The network comprises regional experts responsible for research, extension, University teaching, policy and phytosanitary regulation linked through databases and real time IT links. The aim is to perform rapid and accurate diagnoses that will help farmers throughout West Africa target best control options while also reducing use of unnecessary pesticides.

IITA and Global Plant Clinic (CABI-CSL-Rothamsted-UK) have created a network of mobile plant clinics in West Africa and confirmation of pathogen diagnoses and storage in UK. Mobile plant clinics are a cheap and effective method of providing surveillance of pathogens.

First identification of *Ralstonia solanaearum* on tomato in Benin. This has potentially severe consequences for export trade to USA as race 3 biovar 2 of this bacterium is classified as a bioterrorist threat. A series of surveys have been performed to determine its distribution across the AEZ's of Benin. The isolates recovered are being tested for virulence against tomato in glasshouse studies and characterised using developed ELISA tools and through carbon nutrition studies.

*Habitus*  
picture of  
*Ceratitis*  
*cosyra*  
(Diptera:  
Tephritidae)  
a pest of  
mango,  
annona, and  
citrus widely  
distributed in  
tropical Africa



## Root and Tuber Systems

The project aims at increasing productivity of root and tuber systems, improving knowledge about commodity chains, as well as facilitating agro-enterprise and research investments through the following six outputs:

- Prioritization of policy, input/output market, postharvest and production constraints
- Description of biotic and abiotic processes and interactions
- Improved root and tuber germplasm
- Integration of improved component technologies
- Assessment of the commercial viability of agro-enterprises
- Strategies for enhancing technology adoption potential

Surveys during 2006 revealed a continued expansion of the Cassava Mosaic Disease (CMD) pandemic through Burundi and north-western Tanzania but had not reached the southern part of Sud Kivu in eastern DRC. An assessment of the occurrence and distribution of cassava mosaic viruses in Zambia showed both ACMV and EACMV alone and in mixtures, but the pandemic-associated EACMV-UG was not found and there was no evidence of rapid CMD spread. Maps have been developed on the distribution of cassava mosaic geminiviruses, including EACMV-UG, in East and Central Africa., , The incidence and severity of CMD and abundances of the whitefly vector have been mapped for northern Zambia.

A Brazilian isolate of *Neozygites tanajoae* was released in the Geita and Bunda areas of Tanzania for biological control of the cassava green mite. Follow-up surveys found the fungus in the Geita area but not in the Bunda area. In a cassava pest and disease survey in Bénin the fungus was found in more than 50% of the fields visited. Over 50 native and exotic isolates of *N. tanajoae* were multiplied to conserve their viability. Trials in 12 farmers' fields in two villages in Cameroon showed that the removal of host plants of the African Root and Tuber Scale (ARTS) from the fallow in the immediate vicinity of the field before planting could reduce ARTS densities by about 40% and increase cassava yield by about 35%. This approach will be expanded to other pilot sites in Cameroon and DR Congo.

Resistance to root rot was confirmed in five clones of cassava following three years of intensive evaluation under artificial inoculation and in naturally infected plots. Based on on-farm trials with farmer-participation over the past two seasons, five new cassava genotypes

which combine tolerance/resistance to Cassava Brown Streak Disease with other farmer/end-user preferred traits were selected by farmers for official release in Zanzibar.

An efficient and reproducible in vitro regeneration procedure via somatic embryogenesis has been developed for two farmer-preferred cassava landraces that are susceptible to Cassava Brown Streak Disease (CBSD). This opens up a realistic option for engineering resistance against this disease.

Development of techniques for producing clean or healthy seed yams and their promotion in target areas of Nigeria have been highly successful and well appreciated by farmers.

Evaluation of four yam cropping systems (*Mucuna* improved fallow, *Aeschynomene/Gliricidia* yam association, *Pueraria* as live or dead mulch) in Togo, Burkina Faso, and Bénin (depending on the system) showed the advantages of the *Pueraria* and *Aeschynomene* systems. Compared to the traditional system in Bénin, previous experiments also concluded that planting into *Pueraria* mulch leads to higher total yield of marketable yam. Technologies for producing high quality cassava flour, chips, and starch are operational in 8 cassava processing pilot plants in 5 countries in East and Southern Africa. Data collected from these plants were used for the economic/profitability analysis for small-scale processing of cassava into high value products. The results and the lessons learnt in the implementation of these pilot plants have been documented.

A community processing center for cassava. Tubs for fermentation are seen in the background



# Graduate research

completed at IITA in 2006





## Mphil

**Agbaje, Samuel;** Male; Nigeria

University: University of Ife

Sponsor: Self

Research topic: Evaluation of heterotic patterns of tropical early maize Inbred lines

## MSc Fellows

**Abila, Nelson O.;** Male; Nigeria

University: University of Agriculture, Abeokuta

Sponsor: Self

Research topic: Labour contracts and labour productivity in cassava and yam production in South Western Nigeria

**Afolabi, Oluwatosin;** Female; Nigeria

University: University of Lagos

Sponsor: Self

Research topic: Eliminating viruses from yam by meristem culture and thermotherapy

**Anagbogu, Chinyere;** Female; Nigeria

University: University of Ibadan

Sponsor: Self

Research topic: Assessing the genomic and somaclonal variation between mother plant and succers in Musa Germplasm

**Chijioke, Ugo;** Female; Nigeria

University: Michael Okpara University of Agriculture, Umudike

Sponsor: Self

Research topic: The evaluation of starch and rheological properties of cassava mosaic disease (CMD) resistant varieties and development of an extruded product from enriched cassava flour

**Chumboh, Godlove;** Male; Cameroon

University: University of Nigeria, Nsukka

Sponsor: Self

Research topic: Virus eradication from cassava for safe conservation and exchange

**Gnonlonfin, Benoit;** Male; Benin

University: University of Botswana

Sponsor: DANIDA

Research topic: Natural occurrence of fungi and subsequent mycotoxines contamination in cassava and yam chips in Benin

**Ilogu, C.F;** Male; Nigeria

University: University of Ibadan

Sponsor: Self

Research topic: Comparative study of large seeded grain legume transformation methods

**Muamba, Kabeya;** Male; Nigeria

University: University of Ibadan

Sponsor: Self

Research topic: Studies on development of new methods for rapid and mass propagation on yams (*Dioscorea* spp.)

**Olayide, Olawale;** Male; Nigeria

University: University of Ibadan

Sponsor: Self

Research topic: Manure marketing in the Northern Guinea Savanna of Nigeria

## PhD Fellows

**Adesanwo, Olusola;** Female; Nigeria

University: University of Agriculture, Abeokuta

Sponsor: PTDP (WARDA)

Research topic: Legume/phosphate rock combination for sustainable rice production in South West Nigeria

**Aigbe, Sylvester;** Male; Nigeria

University: Ambrose Alli University, Ekpoma

Sponsor: Self

Research topic: Host-pathogen relationships in the development of root and tuberous root rot of cassava

**Athman, Shashasi Y;** Female; Kenya

University: University of Pretoria, South Africa

Sponsor: BMZ

Research topic: Biological control of banana nematodes using fungal endophytes and study of plant-endophytes-pest interactions

**Ala, Adeola;** Female; Nigeria

University: University of Ibadan

Sponsor: Self

Research topic: Production of monoclonal antibodies to effectively detect and differentiate geminiviruses in Africa and virus-vector relationships

**Bah, Sanoussy;** Male; Guinea

University: University of Sierra Leone

Sponsor: Self

Research topic: Trait association and genetic relationships among cassava germplasm and genotype x environmental interaction of cassava germplasm in Guinea

**Baimey, Kossi H.;** Male; Benin

University: University of Pretoria, South Africa

Sponsor: IITA

Research topic: Biology and epidemiology of yam nematodes in Benin

**Banful, Ben;** Male; Ghana

University: University of Ghana

Sponsor: IITA

Research topic: Contribution of legume cover crops to growth and yield of plantain

**Odedara, Olusola;** Female; Nigeria

University: University of Ibadan

Sponsor: Self

Research topic: Identification and characterization of viruses of herbaceous forage legumes in the derived and Northern Guinea Savanna Zones of Nigeria

**Kapindu, Sinnia J.;** Female; Malawi

University: University of Pretoria, South Africa

Sponsor: BMZ

Research topic: Biological control of banana nematodes using fungal endophytes and study of plant-endophytes-pest interaction

**Maboudou Alidou, G;** Male; Benin

University: University of Pretoria, South Africa

Sponsor: DANIDA

Research topic: Adoption and impact of chip production and storage technologies in the Northern Benin

**Maiga, Idrissa H.;** Male; Niger

University: Ecole Nationale Supérieur Agronomique de Montpellier

Sponsor: IPM Grasshopper

Research topic: L'impact de la mortalité des œufs diapausants du criquet sénégalais *Oedaleus senegalensis* (Krauss 1877) en saison sèche sur la dynamique de la population dans la région de Zinder au Niger

**Obeng-Antwi, Kwadwo;** Male; Ghana

University: University of Reading

Sponsor: CSIR-AgSSIP (World Bank)

Research topic: Genetic diversity among local maize (*Zea mays* L.) accessions in Ghana

**Ogunkanmi Liasu A.;** Male; Nigeria

University: University of Lagos

Sponsor: Self

Research topic: Genetic diversity in cowpea and its wild relatives

**Onitilo, Mojisola;** Female; Nigeria

University: University of Agriculture, Abeokuta

Sponsor: Self

Research topic: Effect of processing methods on the physicochemical, functional and sensory properties of sour cassava starch bread

**Tedihou, Ekanao;** Male; Togo

University: Hannover University

Sponsor: DANIDA

Research topic: The factors that influence *Aspergillus flavus* strains and toxin expression in different agro-ecozones

**Tounou, Agbeko K.;** Male; Togo

University: Hannover University

Sponsor: IPM Grasshopper

Research topic: Grasshopper control with *Nosema locustae*



## Financial information



## Funding overview

Funding for 2006 was US\$46.342 million, of which 96.9% came from CGIAR investors and 3.1% from other sources. Expenditure was US\$45.218 million (net of indirect costs recovery of US\$4.638 million), of which 85.0% was used for program expenses and 15.0% for management and general expenses.

The governments and agencies that provided the largest share of our funding in 2005 and 2006 are shown in Figure 1 (top 10 donors).

IITA's 2006 research agenda expenditure by CGIAR System Priorities is shown in Figure 2.

Figure 1. Funding: top 10 donors, 2005 and 2006

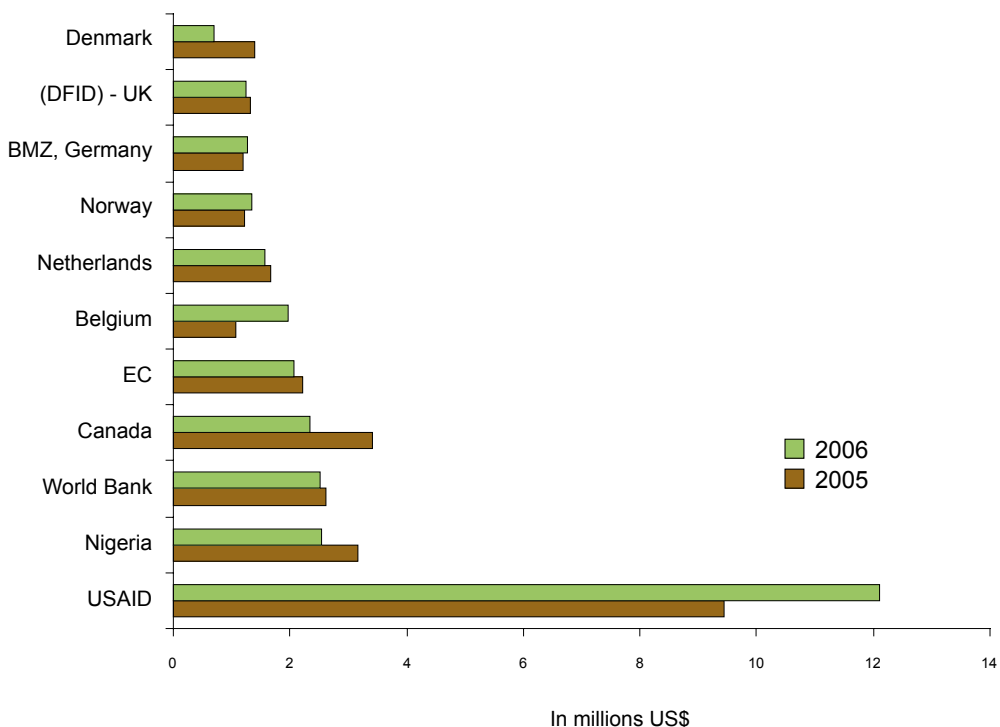
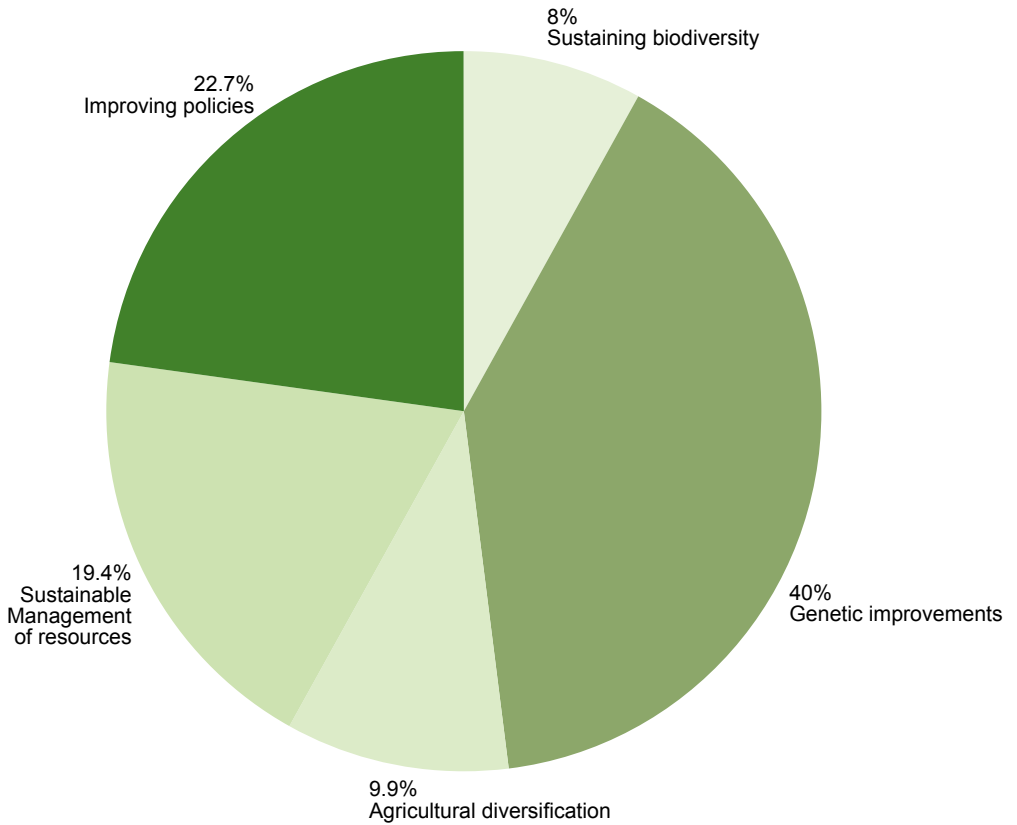


Figure 2. Core research expenditure by CGIAR System priorities, 2006





**IITA supporters**

(expressed in US\$ Thousands)

Austria	463
Belgium	1,970
BMZ, Germany	1,277
Canada	2,351
Catholic Relief Service	372
Commission of the European Communities	2,059
Common Fund	330
Denmark	692
Department for Int'l Development (DFID) - UK	1,237
FDPCC	131
Food and Agriculture Organization	20
France	198
Gatsby Charitable Foundation	289
Global Issues Group (GIG)	549
International Fund for Agricultural Development	980
Ireland	435
Italy	84
Japan	239
Korea, Republic of	50
Netherlands	1,575
Nigeria	2,545
Norway	1,352
NRI	11
Rockefeller Foundation	602
Shell Petroleum Development Company of Nig. Ltd.	3,423
South Africa	20
Sweden	439
Switzerland	677
United States Agency for International Development	12,100
United States Department of Agriculture	1,022
World Bank	2,511
Mozambique (Pro Agric.)	220
Nippon Foundation	130
Miscellaneous Projects	1,858
Closed Projects	44
<b>TOTAL</b>	<b>42,255</b>

## Publications



Journal articles

- Abaidoo, R.C.**, H.H. Keyser, P.W. Dashiell, K.E. Singleton, and N. Sanginga. 2006. Population size, distribution, and symbiotic characteristics of indigenous *Bradyrhizobium* spp. that nodulate TGX soybean genotypes in Africa. *Applied Soil Ecology* 35(1): 57–67.
- Abang, M.M., **R. Asiedu**, P. Hoffmann, G.A. Wolf, H.D. Mignouna, and S. Winter. 2006. Pathogenic and genetic variability among *Colletotrichum gloeosporioides* isolates from different yam hosts in the agroecological zones in Nigeria. *Journal of Phytopathology* 154: 51–61.
- Abbasi, F., M. Javaux, Vanclooster, J. Feyen, G. Wyseure, and **G. Nziguheba**. 2006. Experimental study of water flow and sulphate transport at monolith scale. *Agricultural Water Management* 79: 93–112.
- Adandonon, A., T.A.S. Aveling, N. Labuschagne, and **M. Tamò**. 2006. Biocontrol agents in combination with *Moringa oleifera* extract for integrated control of *Sclerotium*-caused cowpea damping-off and stem rot. 115: 409–418.
- Adango, E., **A. Onzo, R. Hanna**, P. Atachi, and **B. James**. 2006. Comparative demography of the spider mite *Tetranychus ludeni* on two host plants in West Africa. *Journal of Insect Science* 6.
- Adango, E., **A. Onzo, R. Hanna**, P. Atachi, and **B. James**. 2006. Inventaire de la faune des acariens sur *Amaranthus cruentus* L. (Amaranthaceae); *Solanum macrocarpon* L. et *Solanum aethiopicum* L. (Solanaceae) dans le sud-Bénin 26: 155–165.
- Afolabi, C.G., R. Bandyopadhyay**, J.F. Leslie, and E.J.A. Ekpo. 2006. Effect of sorting on incidence and occurrence of fumonisin and *Fusarium verticillioides* on maize. *Journal of Food Protection* 69: 2019–2023.
- Agboka, K.**, S. Gounou, and **M. Tamò**. 2006. The role of maize–legumes–cassava intercropping in the management of maize ear borers with special reference to *Mussidia nigrivenella* Ragonot (Lepidoptera: Pyralidae) 42 (3-4) 495-502
- Ajeigbe, H.A. and B.B. Singh**. 2006. Integrated pest management in cowpea: effect of time and frequency of insecticide application on productivity. *Crop Protection* 25(9): 920–925.
- Ajeigbe, H.A.**, S.G. Mohammed, and **B.B. Singh**. 2006. Comparative assessment of yield potentials of improved cowpea breeding lines using performance index and ranking methods. *Journal of Food, Agriculture, and Environment* 4(3–4): 95–98.

- Ajeigbe, H.A.**, T.O. Oseni, and **B.B. Singh**. 2006. Effect of planting pattern, crop variety and insecticide on the productivity of cowpea–cereal systems in northern Guinea savanna of Nigeria. *Journal of Food, Agriculture and Environment* 4(1): 145–150.
- Alabi, O. and **A.M. Emechebe**. 2006. Evaluation of cow dung extract for the management of scab induced by *Elsinoe phaseoli* in cowpea at Samaru, northern Nigeria. *Nigerian Journal of Botany* 19(1): 169–175.
- Alabi, O.Y., J.A. Odebiyi, and **M. Tamò**. 2006. The relationship between primary metabolites in reproductive structures of cowpea *Vigna unguiculata* (Fabaceae: Papilionidae) cultivars and field resistance to the flower bud Thrips *Megalurothrips sjostedti* (Thysanoptera: Thripidae) 26: 8–15.
- Alene, A.D. and V.M. Manyong**. 2006. Endogenous technology adoption and household food security: the case of improved cowpea varieties in northern Nigeria. *Quarterly Journal of International Agriculture* 45: 211–230.
- Alene, A.D. and V.M. Manyong**. 2006. Farmer-to-farmer technology diffusion and yield variation among adopters: the case of improved cowpea in northern Nigeria. *Agricultural Economics* 35: 203–211.
- Alene, A.D. and V.M. Manyong**. 2006. Testing farmers' cropping decisions and varietal adoption behavior: the case of cowpea producers in northern Nigeria. *Journal of Agricultural and Food Economics* 1: 1–15.

*Schistocerca gregaria*



- Alene, A.D.**, and Hassan, R. M. 2006. The efficiency of traditional and hybrid maize production in Ethiopia: an extended efficiency decomposition approach. *Journal of African Economies* 15: 91–116.
- Alene, A.D.**, **V.M. Manyong**, and **J. Gockowski**. 2006. The production efficiency of intercropping systems of annual and perennial crops production in southern Ethiopia: a comparison of distance functions and production frontiers. *Agricultural Systems* 91: 51–70.
- Alene, A.D.**, **V.M. Manyong**, and **O. Coulibaly**. 2006. Responding to food supply shocks through global partnerships in technology development and transfer: the case of the IITA-led biological control of cassava mealybug in sub-Saharan Africa. *Outlook on Agriculture* 35: 55–61.
- Aliyu, B.S. and **A.M. Emechebe**. 2006. Laboratory screening of non-host cereal cultivars for efficacy to stimulate germination of seeds of *Striga gesnerioides* (Willd.) Vatke. *Biological and Environmental Sciences Journal for the Tropics* 3(1): 53–57.
- Amaza, P.S.**, U. Undiandeye, and Y. Iliyasu. 2006. Socioeconomic analysis of gona melon production in Yobe State, Nigeria. *Journal of Agriculture and Social Research* 6(1): 27–34.
- Amaza, P.S.**, Y. Bila, and A.C. Iheanacho. 2006. Identification of factors that influence technical efficiency of food crop production in West Africa. *Journal of Agriculture in the Tropics and Subtropics* 107: 137–145.
- Amaza, P.S.**, P.Kwaghe, and N. Ojo. 2006. Determinants of wheat production and technical efficiency in the Chad basin development area, Nigeria. *Nigerian Journal of Agriculture, Food and Environment* 2(2): 1–6.
- Amoah, P. P, P. Drechsel, **R.C. Abaidoo**, and J.W. Ntow. 2006. Pesticide and pathogen contamination of vegetables in Ghana's urban markets. *Archives of Environmental Toxicology* 50: 1–6.
- Ariyo, O.A., G.I. Atiri, **A.G.O. Dixon**, and S. Winter. 2006. The use of biolistic inoculation of cassava mosaic begomoviruses in screening cassava for resistance to cassava mosaic disease. *Journal of Virological Methods* 137(1): 43–50.
- Arodokoun, D.Y., **M. Tamò**, C. Cloutier, and J. Brodeur. 2006. Larval parasitoids occurring on *Maruca vitrata* Fabricius (Lepidoptera: Pyralidae) in Bénin, West Africa 113: 320–325.
- Athman, S.Y., **T. Dubois**, A. Viljoen, N. Labuschagne, **D. Coyne**, **P. Ragama**, C.S. Gold, and B. Niere. 2006. In vitro antagonism of endophytic *Fusarium oxysporum* isolates against the burrowing nematode *Radopholus similis*. *Nematology* 8: 627–636.

- Ayongwa, G.C., T.J. Stomph, **A.M. Emechebe**, and T.W. Kuyper. 2006. Root nitrogen concentration of sorghum above 2% produces least *Striga hermonthica* seed stimulation. *Annals of Applied Biology* 149: 255–262.
- Badu-Apraku, B., A. Menkir and M.A.B. Fakorede.** Registration of 16 *Striga*-resistant early maturing tropical maize inbred lines. *Crop Science* 46 (2006): 1410–1411.
- Badu-Apraku, B., A. Menkir, and A.F. Lum.** 2006. Assessment of genetic diversity in extra-early *Striga*-resistant tropical inbred lines using multivariate analysis of agronomic data. *Journal of Genetics and Breeding* 59: 67–80.
- Badu-Apraku, B., A. Menkir, and M.A.B. Fakorede.** 2006. Registration of 16 extra-early maturing *Striga*-resistant tropical maize inbred lines. *Crop Science* 46: 1400–1401.
- Badu-Apraku, B., S. Twumasi-Afriyie, P.Y.K. Sallah, E.A. Asiedu, W. Haag, K.A. Marfo, S. Ohemeng-Dapaah, and B.D. Dzah.** 2006. Registration of Obatanpa Gh Maize. *Crop Science* 46: 1393–1395.
- Baimey, H., D. Coyne, and N. Labuschagne.** 2006. Effect of various fertilizer treatments on *Scutellonema bradys* populations and damage in yam (*Dioscorea* spp.) in the field and in storage. *International Journal of Pest Management* 52(1): 63–70.
- Baiyeri, K.P.** 2006. Seedling emergence and growth of pawpaw (*Carica papaya*) grown under different coloured shade polyethylene. *International Agrophysics* 20(2): 77–84.
- Baiyeri, K.P. and A. Tenkouano.** 2006. Genetic and cropping cycle effects on proximate composition and antinutrient contents of flour made from 11 *Musa* genotypes. *Global Journal of Pure and Applied Sciences* 12(2): 177–182.
- Baiyeri, K.P. and B.N. Mbah.** 2006. Effects of soilless and soil-based nursery media on seedling emergence, growth and response to water stress of African breadfruit (*Treculia africana* Decne). *African Journal of Biotechnology* 5(15): 1405–1410.
- Baiyeri, K.P. and B.N. Mbah.** 2006. Surface sterilization and duration of seed storage influenced emergence and seedling quality of African breadfruit (*Treculia Africana* Decne). *African Journal of Biotechnology* 5(15): 1393–1396.
- Balogun, M.O., I. Fawole, S.Y.C. Ng, N.Q. Ng, H. Shiwachi, and **H. Kikuno.** 2006. Interaction among cultural factors in microtuberization of white yam (*Dioscorea rotundata*). *Tropical Science* 46(1): 55–59.

- Bandyopadhyay, R.**, C. Paul, M. Twizeyimana, R. Adeleke, G.L. Miles, and G.L. Hartman. 2006. Identification and development of resistance to soybean rust in Nigeria. *Phytopathology* 96: S8–S8.
- Bandyopadhyay, R.**, M. Mwangi, **S.O. Aigbe**, and J.F. Leslie. 2006. *Fusarium* species from the cassava root rot complex in West Africa. *Phytopathology* 96: 673–676.
- Brown, R.L., Z.-Y. Chen, and **A. Menkir**, and T.E. Cleveland. 2006. Proteomics to identify resistance factors in corn. *Mycotoxin Research* 22(1): 22–26.
- Chikoye, D.**, J. Ellis-Jones, **G. Tarawali**, P. Kormawa, O.K. Nielsen, S. Ibane, and T. Avav. 2006. Farmers' perceptions of the speargrass (*Imperata cylindrica*) problem and its control in the lowland subhumid savanna of Nigeria. *Journal of Food, Agriculture, and Environment* 19: 118–126.
- Chikoye, D.**, J. Ellis-Jones, P. Kormawa, **U.E. Udensi**, S.E. Ibane, and T. Avav. 2006. Options for Cogongrass (*Imperata cylindrica*) Control in Yam (*Dioscorea rotundata*) and Cassava (*Manihot esculenta*). *Weed Technology* 20: 784–792.
- Chikoye, D.**, **U.E. Udensi**, and **A.F. Lum**. 2006. Performance of a new formulation of atrazine for weed control in maize in Nigeria. *Journal of Food, Agriculture, and Environment* 4: 114–117.
- Coyne, D.**, A. Kagoda, E. Wambugu, and **P. Ragama**. 2006. Response of cassava to nematicide application and plant parasitic nematode infection in East Africa with emphasis on root knot nematodes. *International Journal of Pest Management* 52: 215–223.

Assessing  
maize growth  
on the field



- Coyne, D., A. Tchabi, H. Baimey, N. Labuschagne, and I. Rotifa.** 2006. Distribution and prevalence of nematodes (*Scutellonema bradys* and *Meloidogyne* spp.) on marked yam (*Dioscorea* spp.) in West Africa. *Field Crops Research* 96: 142–150.
- De Moraes, G.J., I. Zannou, A.R. Oliveira, J.S. Yaninek, and **R. Hanna.** 2006. Phytoseiid mites of the subtribes *Typhlodromalina* and *Euseiina* (Acari: Phytoseiidae: Euseiini) from sub-Saharan Africa. *Zootaxa* 1114: 1–52.
- Dochez, C., J. Dusabe, J. Whyte, **A. Tenkouano**, R. Ortiz, and D. De Waele. 2006. New sources of resistance to *Radopholus similis* in *Musa* germplasm from Asia. *Australasian Plant Pathology* 35: 481–485.
- Dubois, T., D. Coyne**, E. Kahangi, L. Turoop, and E.W.N. Nsubuga. 2006. Endophyte-enhanced banana tissue culture: an example of public-private partnerships in Kenya and Uganda to transfer technology. *African Technology Development Forum Journal* 3(1): 18–24.
- Dugje, I.Y., **A.Y. Kamara**, and **L.O . Omoigui.** 2006. Infestation of crop fields by *Striga* species in the savannas of northeast Nigeria. *Agriculture Ecosystems and Environment* 116(116): 251–254.
- Efombagn, M.I.B., O. Sounigo, S. Nyasse, M. Manzanares-Dauleux, C. Cilas, A.B. Eskes, and **M.A. Kolesnikova-Allen.** 2006. Genetic diversity in cocoa germplasm of southern Cameroon revealed by simple sequences repeat (SSRS) markers. *African Journal of Biotechnology* 5(16): 1441–149.
- Egesi, C.N., **R. Asiedu**, G. Ude, Ogunyemi, and J.K. Egunjobi. 2006. AFLP marker diversity in water yam (*Dioscorea alata* L.). *Plant Genetic Resources* 4(3): 181–187.



Drying cocoa beans on a concrete floor



- Fandohan, P., Ahouansou, R., Houssou, P., **Hell, K.**, W.F. Marasas, and M.J. Wingfield. 2006. Impact of mechanical shelling and dehulling on *Fusarium* infection and fumonisin contamination in maize. *Food Additives and Contaminants* 23(451): 451–471.
- Fandohan, P., B. Gnonlonfin, **K. Hell**, W.F.O. Marasas, and M.J. Wingfield. 2006. Impact of indigenous storage systems and insect infestation on the contamination of maize with fumonisin. *African Journal of Biotechnology* 5: 546–552.
- Faturoti, B.O., G.N. Emah, B.I. Isife, **A. Tenkouano**, and **J. Lemchi**. 2006. Prospects and determinants of adoption of IITA plantain and banana based technologies in three Niger delta states of Nigeria. *African Journal of Biotechnology* 5: 1319–1323.
- Fokunang, C.N. and **A.G.O. Dixon**. 2006. Postharvest evaluation of *Colletotrichum gloeosporioides* f. sp. *Manihotis* on cassava genotypes. *Plant Pathology Journal* 5(1): 60–66.
- Franke, A.C.**, J. Ellis-Jones, **G. Tarawali**, S. Schulz, M.A. Hussaini, I. Kureh, R. White, **D. Chikoye**, B. Douthwaite, B.D. Oyewole, and **A.S. Olanrewaju**. 2006. Evaluating and scaling-up integrated *Striga hermonthica* control technologies among farmers in northern Nigeria. *Crop Protection* 25(8) 868 – 878.
- Goni, M. and **P.S. Amaza**. 2006. Determinants of household food security in the Lake Chad area of Borno State, Nigeria. *Journal of Research in Agriculture* 3(3).
- Hajek, A.E., B. Huang, **T. Dubois**, M.T. Smith, and Z. Li. 2006. Field studies of control of *Anoplophora glabripennis* (Coleoptera: Cerambycidae) using fiber bands containing the *Entomopathogenic fungi Metarhizium anisopliae*, and *Beauveria brongniartii*. *Biocontrol Science and Technology* 16: 329–343.
- Hankoua, B.B., S.Y.C. Ng, **I. Fawole**, J. Puonti-Kaerlas, M. Pillay, and **A.G.O. Dixon**. 2006. Production of the first transgenic cassava in Africa via direct shoot organogenesis from friable *Embryogenic calli* and germination of maturing somatic embryos. *African Journal of Biotechnology* 5(19): 1700–1712.
- Hauser, S.**, C. Nolte, and R.J. Carsky. 2006. What role can planted fallows play in humid and subhumid West Africa? *Nutrient Cycling in Agroecosystems* 76: 297–318.
- Herron, C.M.**, T.E. Mirkov, J.V. Da Graça, and R.F. Lee. 2006. Citrus tristeza virus transmission by the *Toxoptera citricida* vector: in vitro acquisition and transmission and infectivity immunoneutralization experiments. *Journal of Virological Methods* 134(1–2): 205–211.

- Hountondji, F.C.C., **R. Hanna**, and M.W. Sabelis. 2006. Does methyl salicylate, a component of herbivore-induced plant volatiles, promote sporulation of the mite-pathogenic fungus *Neozygites tanajoae* Experimental and applied acarology 39: 63–74.
- Hundekon, V.A., H. De Groote, and C. Lomer. 2006. Health Costs and externalities of pesticide use in the Sahel. Outlook on Agriculture 35(1): 25–31.
- Ile, E.I., P. Craufurd, N.H. Battey, and **R. Asiedu**. 2006. Phases of dormancy in yam tubers (*Dioscorea rotundata* Poir.). Annals of Botany 97: 497–504.
- Ironkwe, A.G., **R. Asiedu**, and K.C. Ekwe. 2006. Socioeconomic determinants of adoption of yam miniset technology by women farmers in Abia State of Nigeria. Journal of Research in Agriculture 3(4): 1–7.
- Jemo, M., **C.R. Abaidoo**, C. Nolte, M. Tchienkoua, N. Sanginga, and W.J. Horst. 2006. Phosphorus benefits from grain-legume crops to subsequent maize grown on acid soils of southern Cameroon. Plant and Soil 284(1-2) 385–397.
- Jemo, M., **R.C. Abaidoo**, C. Nolte, and W.J. Horst. 2006. Aluminum resistance of cowpea as affected by P-deficiency stress. Journal of Plant Physiology 164(4) 442-451.
- Kamara, A.Y., A. Menkir**, I. Kureh, and **L. Omoigui**. 2006. Response to low soil nitrogen stress of S1 maize breeding lines selected for high vertical root-pulling resistance. Maydica 51(3–4): 425–433.
- Kamara, A.Y., A. Menkir**, I. Kureh, **L.O. Omoigui**, and F. Ekeleme. 2006. Performance of old and new maize hybrids at high plant densities in the tropical Guinea savanna. Communications in Biometry and Crop Science 1(1): 41–48.
- Kamara, A.Y.**, I. Kureh, **A. Menkir**, P. Kartung, B. Tarfa, and **P. Amaza**. 2006. Participatory on-farm evaluation of the performance of drought-tolerant maize varieties in the Guinea savannas of Nigeria. Journal of Food, Agriculture, and Environment 4: 192–196.
- Kekeunou, S., J. Messi, Weise, and **M. Tindo**. 2006. Insect pests' incidence and variations due to forest landscape degradation in the humid forest zone of southern Cameroon: farmers' perception and need for adopting an integrated pest management strategy. African Journal of Biotechnology 5(7): 555–562.
- Kekeunou, S., **S. Weise**, J. Messi, and **M. Tamò**. 2006. Farmers' perception on the importance of variegated grasshopper (*Zonocerus variegatus* (L.)) in the agricultural production systems of the humid forest zone of southern Cameroon. Journal of Ethnobiology and Ethnomedicine 2: 17–17.

- Kenga, R., **A. Tenkouano**, S.C. Gupta, and S.O. Alabi. 2006. Phenotypic and genetic associations between yield components in hybrid sorghum (*Sorghum bicolor* [L. Moench] populations. *Euphytica* 150(3): 319–326.
- Kureh, I., A.M. Hussaini, A.C. Odunze, **D. Chikoye**, **A.M. Emechebe**, **G. Tarawali**, and **A.C. Franke**. 2006. Agronomic performance of integrated *Striga hermonthica* management strategies. *Nigeria Journal of Weed Science* 19: 41–48.
- Kureh, I., **A.Y. Kamara**, and B.D Tarfa. 2006. Influence of cereal–legume rotation on *Striga* control and maize grain yield in farmers' fields in the northern Guinea savanna of Nigeria. *Journal of Agriculture and Rural Development in the Tropics and Subtropics* 1(107): 41–54.
- Lachat, T., P. Nagel, Y. Cakpo, S. Attignon, **G. Goergen**, B. Sinsin, and R. Peveling. 2006. Dead wood and saproxylic beetle assemblages in a semi-deciduous forest in southern Bénin. *Forest Ecology and Management* 225: 3–23.
- Lachat, T., S. Attignon, J. Djego, **G. Goergen**, P. Nagel, B. Sinsin, and R. Peveling. 2006. Arthropod diversity in lama forest reserve (south Bénin), a mosaic of natural, degraded and plantation forests. *Biodiversity and Conservation* 15(1): 3–23.
- Legg, J.P.**, B. Owor, P. Sseruwagi, and J. Ndunguru. 2006. Cassava mosaic virus disease in East and Central Africa: epidemiology and management of a regional pandemic. *Advances in Virus Research* 67: 355–418.

Cucumbers, peppers, carrot, lettuce are fast becoming important in the diets of the African populations



- Lehrer, A. Z. and **G. Goergen**. 2006. A propos de *Cordylobia Rodhaini gedoelst* et la description d'une nouvelle espèce *Affine afrotrropicale* (Diptera, Calliphoridae). *Fragmenta Dipterologica* 2: 14–19.
- Lehrer, A.Z. and **G. Goergen**. 2006. A propos de l'espèce *Phumosia vittata* (Curran, 1927) de la faune du Nigeria (Diptera, Calliphoridae). *Fragmenta Dipterologica* 2(2): 11–13.
- Mallowa, S.O., D.K. Isutsa, A. Kamau, R. Obonyo, and **J.P. Legg**. 2006. Current characteristics of cassava mosaic in postepidemic areas increase the range of possible management options. *Annals of Applied Biology* 149: 137–144.
- Manyong, V.M.**, I. Okike, and T.O. Williams. 2006. Effective dimensionality and factors affecting crop–livestock integration in West African savannas: a combination of principal component analysis and Tobit approaches. *Agricultural Economics* 35(2): 145–155.
- Maziya-Dixon, B.** and **A.G.O. Dixon**. 2006. Effects of processing yellow-fleshed cassava storage roots on total carotenoid, beta-carotene, iron, and zinc contents.
- Maziya-Dixon, B.**, **A.G.O. Dixon**, and A.A. Adebawale. 2006. Targeting different end uses of cassava; genotypic variations for cyanogenic potentials and pasting properties. *International Journal of Food Science and Technology* [yes].
- Maziya-Dixon, B.**, I. Akinyele, T. Oguntona, R. Sanusi, E. Harris, and S. Nokoe. 2006. Vitamin A deficiency is prevalent in children less than 5yrs of age in Nigeria. *Journal of Nutrition* 136(8): 2255–2261.
- Menkir, A.** 2006. Assessment of reactions of diverse maize inbred lines to *Striga hermonthica* (Del.) Benth. *Plant Breeding* 125: 131–139.
- Menkir, A.**, J.G. Kling, **B. Badu-Apraku**, and O. Ibikunle. 2006. Registration of 26 tropical maize germplasm lines with resistance to *Striga hermonthica*. *Crop Science* 46: 1007–1009.



*African  
Root and  
Tuber  
Scale on  
cassava*

- Menkir, A.**, M.O. Olowolafe, **I. Ingelbrecht**, I. Fawole, **B. Badu-Apraku**, and **B. Vroh**. 2006. Assessment of testcross performance and genetic diversity of yellow endosperm maize lines derived from adapted X exotic backcrosses. *Theoretical and Applied Genetics* 113(1): 90–99.
- Menkir, A.**, R.L. Brown, **R. Bandyopadhyay**, Z.Y. Chen, and T.E. Cleveland. 2006. A USA-Africa collaborative strategy for identifying, characterizing, and developing maize germplasm with resistance to aflatoxin contamination. *Mycopathologia* 162(3): 225–232.
- Meseka, S.K., **A. Menkir**, A. Elhassan, **S. Ajala**, A.E.S. Ibrahim, and O. Sam. 2006. Response of maize hybrids developed for drought tolerance to low soil nitrogen. *Gezira Journal of Agricultural Science* 4(1): 1–14.
- Meseka, S.K., **A. Menkir**, A.E.S. Ibrahim, and **S.O. Ajala**. 2006. Genetic gains from cycles of full-sib recurrent selection for low nitrogen tolerance in a tropical maize population. *Maydica* 51(3–4): 497–505.
- Messi, J., S. Kekeunou, and **S. Weise**. 2006. Abundance and life cycle of *Zonocerus variegatus* (Orthoptera: Pyrgomorphidae) in the humid forest zone of southern Cameroon. *Entomological Science* 9(1): 23–30.
- Miller, S.A., M.T. Momol, S.A. Tolin, R. Gilbertson, **F.D. Beed**, D. Silue, M. Arevalo, D.P. Maxwell, and K. Cardwell. 2006. Development of the International Plant Diagnostic Network (IPDN): a multinational collaboration. *Phytopathology* 96: S79.
- Morton, B.R., **I. Vroh Bi**, M.D. McMullen, and B.S. Gaut. 2006. Variation in mutation dynamics across the maize genome as a function of regional and flanking base composition. *Genetics* 172: 569–577.
- Muthusubramanian, V., **R. Bandyopadhyay**, D.R. Reddy, and P.W. Tooley. 2006. Cultural characteristics, morphology, and variation within *Claviceps africana* and *C. sorghi* from India. *Mycological Research* 110: 452–464.
- Ndunguru, J., **J. Legg**, B. Fofana, T. Aveling, G. Thompson, and C. Fauquet. 2006. Identification of a defective molecule derived from DNA-A of the bipartite begomovirus of East African cassava mosaic virus. *Plant Pathology* 55: 2–10.
- Nkamleu, G.B.** 2006. On measuring indebtedness of African countries: a stochastic frontier debt production function. *African Development Bank* 85: 1–21.
- Nkamleu, G.B.** 2006. Poverty and child farm labor in Africa: wealth paradox or bad orthodox. *African Journal of Economic Policy* 13: 1–24.

- Nkamleu, G.B.** and A. Kielland. 2006. Modeling farmers' decisions on child labor and schooling in the cocoa sector: a multinomial logit analysis in Côte d'Ivoire. *Agricultural Economics* 35: 319–333.
- Nkamleu, G.B.** and J. Nyemeck. 2006. Potentiel de productivité et efficacité technique du secteur agricole en Afrique. *Canadian Journal of Agricultural Economic* 54: 361–377.
- Nkamleu, G.B.**, and **J. Gockowski**. 2006. Study of root and tuber consumption in rural households of the forest zone of Cameroon. *Journal of Agriculture and Food Economics* 1: 81–91.
- Nkamleu, G.B.**, J. Nyemeck, and D. Sanogo. 2006. Metafrontier analysis of technology gap and productivity difference in African agriculture. *Journal of Agriculture and Food Economics* 1: 111–120.
- Nwilene, F.E., A. Onasanya, O. Okhidievbie, Y. Sere, M.N. Ndjiondjop, and **I. Ingelbrecht**. 2006. Identification and differentiation of three Nigerian *Orseolia* sp. by rapid markers. *Asian Journal of Plant Science* 5: 50–53.
- Nziguheba, G.**, E. Smolders, and R. Merckx. 2006. The mineralization of sulfur from organic residues measured by inverse isotope dilution. *Soil Biology and Biochemistry* 38: 2278–2287.
- Odu, B.O.**, **R. Asiedu**, S.A. Shoyinka, and J.d'A. Hughes. 2006. Reaction of white guinea yam (*Dioscorea rotundata* Poir.) genotypes to virus diseases in four agroecological zones in Nigeria. *Journal of Phytopathology* 154: 688–693.
- Odu, B.O.**, **R. Asiedu**, S.A. Shoyinka, and J.d'A. Hughes. 2006. Screening of water yam (*Dioscorea alata* L.) genotypes for reactions to viruses. *Journal of Phytopathology* 154: 716–724.
- Ogbe, F.O.**, **A.G.O. Dixon**, J.d'A. Hughes, F. Alabi, and **R. Okechukwu**. 2006. Status of cassava begomoviruses and their new natural hosts in Nigeria. *Plant Disease* 90(5): 548–553.
- Ogunjobi, A.A., O.E. Fagade, and **A.G.O. Dixon**. 2006. Molecular variation in population structure of *Xanthomonas axonopodis* pv *Manihotis* in the southeastern Nigeria. *Journal of Phytopathology* 153(4): 226–231.
- Ojiambo, P.S.** and H. Scherm. 2006. Biological and application-oriented factors influencing plant disease suppression by biological control: a meta-analytical review. *Phytopathology* 96(11): 1168–1174.
- Ojiambo, P.S.** and H. Scherm. 2006. Factors affecting plant disease suppression by biocontrol: a meta-analysis. *Phytopathology* 96(96): S87.
- Ojiambo, P.S.** and H. Scherm. 2006. Optimum sample size for determining disease severity and defoliation associated with septoria leaf spot of blueberry. *Plant Disease* 9: 1209–1213.

- Ojiambo, P.S.**, H. Scherm, and P.M. Brannen. 2006. Septoria leaf spot reduces flower bud number and return yield in southern blueberries. *Plant Disease* 90(1): 51–57.
- Olaniyi, M.O., P. Speijer, D. De Waele, R. Swennen, and **A. Tenkouano**. 2006. Influence of crop management practices in two locations on plantain response to plant parasitic nematodes. *Niger Delta Biologia* 5(1): 1–3.
- Olanya, O.M., **P.S. Ojiambo**, and R.O. Nyankanga. 2006. Dynamics of late blight development and comparative resistance of potato varieties in Kenya. *Canadian Journal of Plant Pathology* 28: 84–89.
- Omoigui, L.O.**, M.F. Ishiyaku, **A.Y. Kamara**, S.O. Alabi, and S.G. Mohamed. 2006. Genetic variability and heritability studies of some reproductive traits in cowpea (*Vigna unguiculata* (L.) Walp.). *African Journal of Biotechnology* 13(5): 1191–1195.
- Omoigui, L.O.**, S.O. Alabi, S.G. Ado, S.O. Ajala, and **A.Y. Kamara**. 2006. Responses of maize hybrids developed for drought tolerance to low soil nitrogen. *Gezira Journal of Agricultural Science* 4(1): 1–14.
- Oriero, C.E.**, O.A. Odunola, Y. Lokko, and **I. Ingelbrecht**. 2006. Analysis of B-genome derived simple sequence repeat (SSR) markers in *Musa* spp. *African Journal of Biotechnology* 5: 126–128.
- Oselebe, H.O., **A. Tenkouano**, and M. Pillay. 2006. Ploidy variation of *Musa* hybrids from crosses. *African Journal of Biotechnology* 5(11): 1048–1053.
- Oselebe, H.O., **A. Tenkouano**, M. Pillay, I.U. Obi, and M.I. Uguru. 2006. Ploidy and genome segregation in *Musa* breeding populations assessed by flow cytometry and random amplified polymorphic DNA markers. *Journal of the American Society for Horticultural Science* 131(6): 780–786.
- Otim, M., **J. Legg**, S. Kyamanywa, A. Polazsek, and D. Gerling. 2006. Population Dynamics of *Bemisia tabaci* (Homoptera: Aleyrodidae) parasitoids on cassava mosaic disease-resistant and susceptible varieties. *Biocontrol Science and Technology* 16: 205–214.
- Otoo, E. and **R. Asiedu**. 2006. Cultivar evaluation and mega-environment investigation of *Dioscorea cayenensis* cultivars in Ghana based on the GGE biplot analysis. *Journal of Food Agriculture and Environment* 4 (3–4): 162–166.
- Otoo, E., **C.C. Okonkwo**, and **R. Asiedu**. 2006. Stability studies of hybrid yam (*Dioscorea rotundata* Poir.) genotypes in Ghana. *Journal of Food Agriculture and Environment* 4: 234–238.
- Paparu, P., **T. Dubois**, C.S. Gold, B. Niere, E. Adipala, and **D. Coyne**. 2006. Improved colonization of East African highland *Musa* tissue

- culture plants by endophytic *Fusarium oxysporum* Schlecht.: Fries. Journal of Crop Improvement 16: 81–95.
- Paparu, P., **T. Dubois**, C.S. Gold, B. Niere, E. Adipala, and **D. Coyne**. 2006. Colonization of roots and rhizomes of tissue culture *Musa* plants by non-pathogenic *Fusarium oxysporum*. Annals of Applied Biology 149: 1–8.
- Pillay, M., E. Ogundiwin, **A. Tenkouano**, and J. Dolezel. 2006. Ploidy and genome composition of *Musa* germplasm at the International Institute of Tropical Agriculture (IITA). African Journal of Biotechnology 5(13): 1224–1232.
- Randall, P.J., **R.C. Abaidoo**, P.J. Hocking, and N. Sanginga. 2006. Mineral nutrient uptake and removal by cowpea, soybean, and maize in West Africa, and implications for carbon cycle effects on soil acidification. Experimental Agriculture 42(4): 475–494.
- Scherm, H., H.K. Ngugi, and **P.S. Ojiambo**. 2006. Trends in theoretical plant epidemiology. European Journal of Plant Pathology 115: 61–73.
- Shittu, T.A., **L.O. Sanni**, S.O. Awonorin, **B. Maziya-Dixon**, and **A.G.O. Dixon**. 2006. Use of multivariate techniques in studying the flour making properties of some CMD-resistant cassava clones. Food Chemistry 101(2007): 1634–1643.
- Shiwachi, H., **H. Kikuno**, **C.C. Okonkwo**, and **R. Asiedu**. 2006. Iron toxicity symptoms in yams (*Dioscorea* spp.) grown in water culture. Tropical Science 46(3): 160–165.
- Singh, B.B., O.O. Olufajo, M.F. Ishiyaku, R.A. Adeleke, **H.A. Ajeigbe**, and S.G. Mohammed. 2006. Registration of 'ngvu-05-25' Cowpea Cultivar. Crop Science 46(6): 2708–2709.
- Singh, B.B., O.O. Olufajo, M.F. Ishiyaku, R.A. Adeleke, **H.A. Ajeigbe**, and S.G. Mohammed. 2006. Registration of six improved germplasm lines of cowpea with combined resistance to *Striga gesnerioides* and *Alectra vogelii*. Crop Science 46: 2332–2333.
- Ssebuliba, R., D. Talengera, D. Makumbi, **A. Tenkouano**, and M. Pillay. 2006. Reproductive efficiency and breeding potential of East African highland banana. Field Crops Research 95(250): 255.
- Ssebuliba, R., M. Magambo, D. Talengera, D. Makumbi, **A. Tenkouano**, P. Rubaihayo, and M. Pillay. 2006. Biological factors affecting seed set in highland bananas. Journal of Crop Improvement 16: 67–79.
- Ssemakula, G.**, **P. Ntawuruhunga**, C. Kanobe, H. Ojulong, **P. Ragama**, J. Whyte, and A. Bua. 2006. Evaluation of advanced cassava genotypes in Uganda. African Crops Science 14(1): 17–25.
- Tarfa, B.D., I. Kureh, **A.Y. Kamara**, and D.N. Maigida. 2006. Influence of cereal–legume rotation on soil chemical properties, crop yield and



- Striga* control. Journal of Agronomy (Pakistan) 2(5): 362–368.
- Tata-Hangy, K., K.M. Lema, N. Ndambi, D. Lutete, **R. Hanna**, M. Toko, and A. Nkakwa. 2006. Notes on the African root and tuber scale, *Stictococcus vayssierei* Richard, a recent reported cassava pest in the Bas-Congo province of the Democratic Republic of Congo. Roots 1(10): 1–7.
- Tenkouano, A., S. Hauser, D. Coyne, and O. Coulibaly.** 2006. Clean planting materials and management practices for sustained production of banana and plantain in Africa. Chronica Horticulturae 46(2): 14–18.
- Tooley, P.W., **R. Bandyopadhyay**, M.M. Carras, and S. Pazoutova. 2006. Analysis of *Claviceps africana* and *C. Sorghi* from India using AFLPS, EF-1 gene intron 4, and beta-tubulin gene intron 3. Mycological Research 110: 441–451.
- Tripathi, L.,** J.N. Tripathi, and W.K. Tushemereirwe. 2006. Screening procedures for early evaluation of banana varieties resistant to bacterial wilt disease. African Crop Science Journal 14: 125–134.
- Ude, G.N., C.O. Dimpka, P. Anegebe, A. Shaibu, **A. Tenkouano**, M. Pillay, and Z. Tchoundjeu. 2006. Analysis of genetic diversity in accessions of *Irvingia gabonensis* (Aubry-Lecomte ex O' Rorke) Baill. African Journal of Biotechnology 5: 219–223.
- Udensi, U.E., D. Chikoye,** and S. Ogunyemi. 2006. Influence of artificial and velvetbean shade on the dry matter of speargrass in Nigeria. African Crop Science Journal 13(2): 153–162.
- Vroh Bi, I.,** M.D. McMullen, H. Sanchez-Villeda, S. Schroeder, J. Gardiner, M. Polacco, C. Soderlund, R. Wing, Z. Fang, and E.H. Coe. 2006. Single nucleotide polymorphisms and

Yam tubers stored under shade and sold through farmer cooperatives



- insertion-deletions for genetic markers and anchoring the maize fingerprint contig physical map. *Crop Science* 46: 12–21.
- Yu, J., G. Pressoir, W.L. Briggs, **I. Vroh Bi**, M. Yamasaki, J.F. Doebley, M.D. McMullen, B.S. Gaut, D.M. Nielsen, J.B. Holland, S. Kresovich, and E.S. Buckler. 2006. A unified mixed-model method for association mapping that accounts for multiple levels of relatedness. *Nature Genetics* 38: 203–206.
- Zannou, I.D.**, G.J. De Moraes, E. Ueckermann, A.P. Oliveira, J.S. Yaninek, and **R. Hanna**. 2006. Phytoseiid mites of the genus *Neoseiulus* (Acari: Phytoseiidae) from sub-Saharan Africa. *International Journal of Acarology* 32(3): 241–276.
- Zarafi, A.B. and **A.M. Emechebe**. 2006. Effect of intra row spacing on the incidence and severity of pearl millet downy mildew and grain yield. *Archives of Phytopathology and Plant Protection* 39(1): 9–14.

## Books

- Alene, A.D., Manyong, V.M., Gockowski, J., Coulibaly O., and S. Abele**. 2006. A framework for conceptualizing impact assessment and promoting impact culture in agricultural research, IMPACT. IITA, Ibadan, Nigeria.
- Ayodele, M.A., A. Menkir, O.Oguntade, and R. Okechukwu**. 2006. Gray leaf spot: morphological characterization of isolates of *Cercospora Seae Maydis*.
- Ayodele, M.A.**, J.d'A. Hughes, and **R. Asiedu**. 2006. Yam anthracnose disease: field symptoms and laboratory diagnostics.
- Dziedzoave, N.T., **A.B. Abass**, W. K.A. Amoa-Awua, and M. Sablah. 2006. Quality management manual for the production of high quality cassava flour, edited by G.O. Brimer and L. Adegoke. IITA, Ibadan, Nigeria.
- IITA, IAR, and SG2000. 2006. Growing soybean and maize in rotation. IITA, Ibadan, Nigeria.
- Manyong, V.M., A.D. Alene, D. Sanogo, O. Coulibaly, S. Abele, and G.B. Nkamleu**. 2006. Achievements in impact assessment of agricultural research: IITA Experience, 2001–2006, IMPACT. IITA, Ibadan, Nigeria.
- Sanni, L., B. Maziya-Dixon, A.O. Onabolu, B.E. Arowosafe, A.E. Okoruwa, R.U. Okechukwu, A.G.O. Dixon, A.D.I. Waziri, P. Ilona, C. Ezedinma, G. Ssemakula, J. Lemchi, M. Akoroda, F. Ogbe, G. Tarawali, E. Okoro, and C. Geteloma**. 2006. Cassava Recipes for household food security. IITA, Nigeria.

- Sanni, L.O., B. Maziya-Dixon, J.N. Akanya, C.I. Okoro, Y. Alaya, C.V. Egwuonwu, R.U. Okechukwu, C. Ezedinma, M. Akoroda, J. Lemchi, F. Ogbe, E. Okoro, G. Tarawali, J. Mkumbira, M. Patino, G. Ssemakula, and A. Dixon.** 2006. Standards for cassava products and guidelines for export. IITA, Ibadan, Nigeria.
- Sanni, L.O., M.A. Adelaja, C. Ezedinma, R.U. Okechukwu, M. Patino, M.O. Akoroda, B. Maziya-Dixon, J. Lemchi, P. Ilona, E. Okoro, G. Tarawali, T. Awodeyi, B. Bamkefa, N. Naji, F. Ogbe, A.G.O. Dixon, O.E. Obi, and A. Ozigi.** 2006. Catalog of postharvest equipment for cassava processing. IITA, Nigeria.
- Ivbijaro, M.F.A., F. Akintola, and **R.U. Okechukwu,** (eds). 2006. Sustainable environmental management in Nigeria. College Press, Ibadan, Nigeria.

#### Book section

- Dubois, T., C.S. Gold, P. Paparu, S. Athman, and S. Kapindu.** 2006. Tissue culture and the in vitro environment enhancing plants with endophytes: potential for ornamentals? Pages 397–409 *in* Floriculture, Ornamental, and Plant Biotechnology: Advances and Topical Issues. First edition edited by J. Teixeira Da Silva. Global Science Books, London, UK.
- Ingelbrecht, I., T.E. Mirkov, A.G.O. Dixon, and A. Menkir.** 2006. Epigenetic lessons from transgenic plants. Pages 88–97 *in* Floricultural, Ornamental and Plant Biotechnology: Advances and Topical Issues. First edition edited by J. Teixeira Da Silva. Global Science Books, London, UK.
- Lokko, Y., C. Okogbenin, C. Mba, **A.G.O. Dixon, A. Raji,** and M. Fregene. 2006. Cassava. Pages 249–266 *in* Genome mapping and molecular breeding in plants. Vol 3. Pulses, sugar, and tuber crops, edited by C. Kole. Heidelberg, Springer-Verlag Berlin.
- Nziguheba, G., S. Ponseele, D. Stuyckens, J. Diels, R. Merckx, and G. Dercon.** 2006. Organic matter for improving nutrient use efficiency in cereal–legumes systems in West Africa savanna. Page 167 *in* Frontiers of Soil Science, International Union of Soil Science (IUSS), Philadelphia, USA.
- Pillay, M. and **L. Tripathi.** 2006. Banana. Pages 281–303 *in* Genome mapping and molecular breeding, edited by C. Kole. Springer, Heidelberg, Berlin.
- Viaene, N., **D.L. Coyne,** and B.R. Kerry. 2006. Biological and cultural control. Pages 346–369 *in* Plant nematology, edited by M. Moens and R. Perry. CABI, Wallingford, UK.

## Conference Proceedings

Akissoe, N., P. Vernier, and **D. Cornet**. 2006. The effect of mechanical slicing on yam chip quality. Posters session, paper presented at the roots and tubers for sustainable development: issues and strategies. Proceeding of the 14th Triennial symposium of ISTRC, Thiruvananthapuram, Kerala, India.

Athman, S.Y., **T. Dubois**, **D. Coyne**, C.S. Gold, N. Labuschagne, and A. Viljoen. 2006. Effect of endophytic *Fusarium oxysporum* on host preference, root penetration and reproduction of *Radopholus similis* in banana (*Musa* spp.) tissue culture plants. Paper presented at the 28th European Society of Nematology Symposium, Blagoevgrad, Bulgaria.

**Cornet, D.**, N. Akissoe, P. Vernier, and C. Mestres. 2006. Effects of nitrogen fertilization on pounded yam sensory and physico-chemicals properties. Postersession, paper presented at the roots and tubers for sustainable development: issues and strategies. Proceeding of the 14th triennial symposium of ISTRC, Thiruvananthapuram, Kerala, India.

**Coyne, D.**, **T. Dubois**, S. Athman, and P. Paparu. 2006. Endophyte-enhanced tissue culture banana in East Africa: towards biological management of the burrowing nematode. Paper presented at the 38th Annual Meeting. Organization of Nematologists of Tropical America (ONTA), San Jose, Costa Rica.



*Banana*  
inflorescence.  
Banana is a  
staple in East  
Africa

- Gold, C.S., **T. Dubois**, W. Tinzaara, and A. Kiggundu. 2006. Biology and integrated pest management for the banana weevil *Cosmopolites sordidus* (Germar) (Coleoptera: Curculionidae). Paper presented at the Memorias de la II Seminario Internacional Sobre Produccion, Comercializacion e Industrializacion de Platano. Manizales, Colombia.
- Niere, B., C. Gold, **D. Coyne**, **T. Dubois**, and D. Ochieno. 2006. Banana tissue culture: benefits for East African farmers. Paper presented at Tropentag 2006. Prosperity and Poverty in a Globalized World: Challenges for Agricultural Research, Bonn, Germany.
- Adango, E., **A. Onzo**, **R. Hanna**, P. Atachi, and **B. James**. 2006. Mite pests of major importance on indigenous leafy vegetables in Bénin: the search for appropriate control strategies. Paper presented at the Oral presentation at First international conference on indigenous vegetables and legumes, 12–15 December 2006, AVRDC-RCSA, ICRISAT Campus, Patancheru, Hyderabad, India.
- Aikpokpodion, P.O.**, **M. Kolesnikova-Allen**, R.J. Schnell, J.-C. Motamayor, A.B. Eskes, and M. Gilmour. 2006. Genetic shift in structure of West African cacao and evolution of a new hybrid population revealed by simple sequence repeat markers (SSRS). Paper presented at the 15th International Cocoa Research Conference, 9–14 October 2006, San Jose, Costa Rica.
- Aikpokpodion, P.O.**, V. Adetimirin, **I. Ingelbrecht**, J.C. Motamayor, R. Schnell, and **M. Kolesnikova-Allen**. 2006. Genetic diversity of Cacao, *Theobroma cacao* L., Collections in Nigeria determined by simple sequence repeat markers. Paper presented at the Plant and Animal Genomes 15th Conference, 14–18 January 2006, Town and Country Convention Center, San Diego, CA, USA.
- Ajeigbe, H.A.**, **A.M. Emechebe**, and **B.B. Singh**. 2006. Control of *Striga gesnerioides* and *Alectra vogelii* in Cowpea. Paper presented at the FAO technical meeting on *Striga* control at (Programme pour la réunion technique sur la lutte contre *Striga* TCP/RAF/3008, 25–27 Avril 2006, Cotonou, Bénin.
- Akin-Idowu, P.**, **R. Asiedu**, **B. Maziya-Dixon**, and **F.D Baah**. 2006. Nutritional enhancement of yam. Paper presented at the the 37th Annual Conference and Scientific meeting of Nutrition Society of Nigeria (NSN), 8–10 December 2006, Abeokuta, Nigeria.
- Alene, A.D.**, **V.M. Manyong**, E.F. Tollens, and **S. Abele**. 2006. Setting strategic agricultural research priorities based on potential impacts on poverty reduction: the case of Nigeria. Paper presented at the 26th Conference of the International Association of Agricultural Economists, Gold Coast, Australia.

- Alene, A.D., V.M. Manyong, E.F. Tollens, and S. Abele.** 2006. The efficiency–equity tradeoffs in agricultural research priority setting: the potential impacts of agricultural research on economic surplus and poverty reduction in Nigeria. Paper presented at the the 26th Conference of the International Association of Agricultural Economists, Gold Coast, Australia.
- Amaza, P.S.** and B.O. Ogunbameru. 2006. The Contribution of the farm-family to food security in West Africa: empirical evidence from Borno State, Nigeria. Paper presented at the Doha International Colloquium on the Family, Nairobi, Kenya.
- Amaza, P.S., J.C. Umeh, J. Helsen, and Adejobi.** 2006. Determinants and measurement of food insecurity in nigeria: some empirical policy guide. Paper presented at the 26th Conference of the International Association of Agricultural Economists, 12–18 August 2006, Gold Coast, Queensland, Australia.
- Baah, F.D., B. Maziya-Dixon, R. Asiedu, W.O. Ellis, and I. Oduro.** 2006. Suitability of *Dioscorea alata* genotypes for making traditional food products in West Africa. Paper presented at the 14th Triennial Symposium of ISTRC, Trivandrum, Kerala, India.
- Badu-Apraku, B., A. Menkir, D. Dumet, and S. Hearne.** 2006. Maize germplasm conservation, utilization, and management in West Africa. Paper presented at the Development of maize crop: strategy for increasing conservation efficiency and effectiveness, 2–5 May 2006, CIMMYT, Mexico.
- Baimey, H., S. Loumedjion, **B. James, and D. Coyne.** 2006. Plant parasitic nematodes of vegetable crops in benin and management of root-knot nematodes using botanicals. Paper presented at the Poster presentation at First international conference on indigenous vegetables and legume, AVRDC-RCSA, ICRISAT campus, 12–15 December 2006, Patancheru, Hyderabad, India.
- Blomme, G., R. Swennen, L.F. Turyagyenda, and **A. Tenkouano.** 2006. Root and shoot development during the plant crop and the first ratoon of banana and plantain (*Musa* spp.) with implications for perennial cultivation on degraded Ultisols in southeastern Nigeria. Paper presented at the ACORBAT 2006. Brazil.
- Chikoye, D., J. Elli-Jones, G. Tarawali, and A.F. Lum.** 2006. Reducing poverty through improved *Striga* control. Paper presented at the Proceedings of the second *Striga* management stakeholders' conference, 8–9 September 2004, Zaria, Kaduna State, Nigeria.
- Cornet, D., P. Vernier, F. Amadji, and R. Asiedu.** 2006. Integration of yam in cover crop-based cropping system: constraints and potential.

Paper presented at the roots and tubers for sustainable development: issues and strategies. Proceeding of the 14th triennial symposium of ISTRC. Thiruvananthapuram, Kerala, India.

**Coyne, D.**, C. Kajumba, and F. Kagoda. 2006. Improved banana performance in East Africa through nematode management interventions at the International Institute of Tropical Agriculture.

Paper presented at the INIBAP. Farmer-participatory testing of banana IPM options for sustainable banana production in Eastern Africa, 8–9 December 2003, Ridar Hotel, Seeta, Uganda.

Den Breeyen, A., R. Charudattan, **F. Beed**, G.E. Macdonald, J.A. Rollins, and F. Altpeter. 2006. Genetic diversity of *Imperata cylindrica*: the implications for fungal biocontrol. Paper presented at the Florida Weed Science Society Annual Meeting, 21–22 February, **GCREC, Balm**.

**Dixon, A.G.O., G.N. Ssemakula, and B. Maziya-Dixon.** 2006. Cassava biofortification: progress using conventional breeding. Paper presented at the Africa Regional Workshop on Biofortification for the Improvement of Human Nutrition and Health, 3–4 May 2006, Mombasa, Kenya.

**Dixon, A.G.O., L. Sanni, C. Ezedinma, and A. Onabolu.** 2006. Issues and challenges for cassava in West and Central Africa. Paper presented at the IFAD Cassava processing and marketing regional initiative workshop, 20–22 March 2006, Accra, Ghana.

Donner, M., J. Atehnkeng, **R. Bandyopadhyay**, S. Kiewnick, R. Sikora, and P. Cotty. 2006. Characterisation of aflatoxin-producing and non-producing strains of *Aspergillus flavi* section in Nigeria. Paper

Healthy  
cowpea (left),  
rust infected  
cowpea (right)



- presented at Deutscher Tropentag (DTT), 11–13 October 2006, Bonn, Germany.
- Dux, J., L. Norgrove, **S. Hauser**, B. Wick, and R. Kuehne. 2006. Impact of residue decomposition on soil enzyme activity and nutrient turnover. Paper presented at Tropentag, 11–13 October 2006, Bonn, Germany.
- Ewool, M.B., P.Y.K. Sallah, F. Nelson-Quartey, and **A. Menkir**. 2006. Potential for improving maize for iron, zinc and beta-carotene content in Ghana. Paper presented at the International Plant Breeding Symposium, 20–25 August, Mexico City, Mexico.
- Hauser, S.** 2006. Biomass production, nutrient uptake and partitioning in planted *Senna spectabilis*, *Flemingia macrophylla*, and *Dactyladenia barteri* fallow systems over three fallow/cropping cycles on Ultisol. Paper presented at Tropentag, 11–13 October 2006, Bonn, Germany.
- Hauser, S.** 2006. Groundnut/cassava/maize yields over three cycles of a fallow/crop rotation with planted *Senna spectabilis*, *Flemingia macrophylla*, and *Dactyladenia barteri* on Ultisol. Paper presented at Tropentag, 11–13 October 2006, Bonn, Germany.
- Hauser, S.** 2006. Nitrogen fixation and balance in burned versus mulched *Mucuna pruriens* var. utilis and *Pueraria phaseoloides* relay maize cropping systems. Paper presented at Tropentag, 11–13 October 2006, Bonn, Germany. **Hauser, S.** 2006. Plantain (*Musa* spp. Aab) bunch yield and root health response to combinations of physical, thermal and chemical sucker sanitation measures. Paper presented at Tropentag, 11–13 October 2006, Bonn, Germany.
- Hauser, S.** 2006. Soil temperatures during burning of large amounts of wood, effects on soil Ph and subsequent maize yields. Paper presented at Tropentag, 11–13 October 2006, Bonn, Germany.
- Hauser, S.**, B. Bengono, and O.I. Bitomo. 2006. Maize yield response to *Mucuna pruriens* and *Pueraria phaseoloides* cover crop fallow and biomass burning versus mulching in farmer managed on-farm experiments. Paper presented at Tropentag, 11–13 October 2006, Bonn, Germany.
- Hauser, S.**, M. Njayou, and L. Zapfack. 2006. Farmers' perception and use of planted *Calliandra calothyrsus* fallow in southern Cameroon. Paper presented at Tropentag, 11–13 October 2006, Bonn, Germany.
- Hauser, S.**, S.N. Ngoumbe, and B.A. Nkongmeneck. 2006. Effects on species composition of glyphosate application in a plantain system after secondary forest clearing. Paper presented at Tropentag, Bonn, Germany.



- James, B., I. Godonou, C. Atcha-Ahove, I. Glitho, S. Vodouhe, S. Loumedjinon, H. Baimey, A. Ahanchede, C. Kooyman, and G. Goergen.** 2006. Extending the reach of IPM research in vegetable production in Bénin. Paper presented at the Lead paper (oral presentation) at First international conference on indigenous vegetables and legumes, AVRDC-RCSA, ICRISAT campus, 12–15 December 2006, Patancheru, Hyderabad, India.
- Junge, B.** 2006. Measurement of soil erosion based on radionuclides in Ibadan, Nigeria. Paper presented at the Annual conference of Soil Science Society of Nigeria (SSSN), 13–17, November 2006, Zaria, Nigeria.
- Junge, B., R. Abaidoo, D. Chikoye, T. Alabi, and K. Stahr.** 2006. Monitoring of land use intensification and linkage to soil erosion in Nigeria and Bénin. Paper presented at Deutscher Tropentag (DTT), 11–13 October 2006, Bonn, Germany.
- Kamara, A.Y., J.D. Kwari, and L.O. Omoigui.** 2006. Deterioration in soil fertility as a consequence of cropping intensification in the savannas of northeastern Nigeria. Paper presented at the Sustainability Impact on Soil Management and Environment Proceedings of the 17th Triennial Conference of International Soil Tillage Organization, 28 August–3 September 2006, Christian-Albrecht's Universitaet, Kiel, Germany.

*Jide Odu, gene bank scientist, ensuring the genetic integrity of plants in the greenhouse*



- Kikuno, H.**, K. Muamba, H. Shiwachi, M. Onjo, and **R. Asiedu**. 2006. Mini tuber production of white yam (*D. rotundata*) using vine cutting. Paper presented at the 99th Meeting of the Japanese Society Tropical Agriculture, Tsukuba, Japan.
- Kikuno, H.**, T. Ayankanmi, H. Shiwachi, and **R. Asiedu**. 2006. The possibility of vine cutting techniques on white yam (*D. rotundata*) using natural compounds. Paper presented at the 99th Meeting of the Japanese Society Tropical Agriculture, Tsukuba, Japan.
- Legg, J.P.** and **P. Ntawuruhunga**. 2006. The African cassava mosaic disease pandemic and its mitigation, 13–15 June 2006, Milles Collines Hotel, Kigali, Rwanda.
- Manyong, V.M.** and **A.D. Alene**. 2006. Agricultural research: how well has the African farmer benefited? Paper presented at the 11th Annual Symposium of IARSAF, IITA, Ibadan, Nigeria.
- Menkir, A.**, and **B. Badu-Apraku**. 2006. The role of IITA in the development of quality protein maize for Nigeria. Paper presented at the Training Workshop of Extension Workers, 11–12 October 2006, NAERLS, Zaria, Nigeria.
- Menkir, A.**, **B. Badu-Apraku**, C.G. Yallou, **A.Y. Kamara**, and G. Ejeta. 2006. Breeding maize for broad-based resistance to *Striga hermonthica*. Paper presented at the International Symposium on *Striga* control, 5–10 November 2006, Addis Ababa, Ethiopia.



C. Okonkwo, international trials manager, examining yam plants on station. Tubers from these plants will be assessed for various qualities

- Menkir, A., B. Maziya-Dixon, W. White, and T. Rocheford.** 2006. Genetic enhancement of micronutrient content in maize for improved human nutrition. Paper presented at the FARA/ HarvestPlus Africa Regional Workshop on Biofortification: Interfacing Agriculture and Health, 4–5 May 2006, Mombasa, Kenya.
- Menkir, A., R.L. Brown, R. Bandyopadhyay, Z. Chen, and T.E. Cleveland.** 2006. Breeding maize for resistance to mycotoxins at the International Institute of Tropical Agriculture. Paper presented at the Workshop on Reducing Impact of Mycotoxins in Tropical Agriculture with emphasis on health and trade in Africa, 13–16 September 2005, Accra, Ghana.
- Menkir, A., S.O. Ajala, A.Y. Kamara, and S.K. Meseka.** 2006. Progress in breeding tropical maize for adaptation to suboptimal soil nitrogen at IITA. Paper presented at the 42nd Illinois Corn Breeder's School, 6–7 March 2006. Champaign, USA.
- Menkir, A., W. White, B. Maziya-Dixon, and T. Rocheford.** 2006. Genetic potential for increasing pro-vitamin A content in tropical maize. Paper presented at the International Plant Breeding Symposium, 20–25 August, Mexico.
- Mwangi, M., **R. Bandyopadhyay, and M. Tindo.** 2006. Studies on interaction between the African root and tuber scale and incidence of fungal rots on cassava tuberous roots. Paper presented at Deutscher Tropentag (DTT), 11–13 October 2006, Bonn, Germany.
- Mwangi, M., W. Tinzaara, N. Vigheri, F. Namu, **P. Ragama, and R. Bandyopadhyay.** 2006. Comparative study of banana *Xanthomonas* wilt spread in mid and high altitudes of the Great Lakes region of Africa. Paper presented at Deutscher Tropentag (DTT), 11–13 October 2006, Bonn, Germany.
- Nkamleu, G.B.** 2006. Regional migration in sub-Saharan Africa. Paper presented at the WorldBank Workshop on Job Creation in Africa, Eschborn-Germany, 27–28 November 2006, Frankfurt, Germany.
- Nkamleu, G.B., O. Coulibaly, and D. Sanogo.** 2006. IITA's experience with ex-post impact assessment of agricultural research. Paper presented at the 26th Conference of the International Association of Agricultural Economists, 12–18 August 2006, Queensland, Australia.
- Ntawuruhunga, P., J.P. Legg, C.S.H. Omongo, S. Lukombo, and E. Kimani.** 2006. Strategies for controlling the cassava mosaic disease pandemic in Eastern and Central Africa through resistance breeding programs, 13–15 June 2006, Milles Collines Hotel, Kigali, Rwanda.

- Nyombi, K., **P.J.A. van Asten**, G. Tulya, and K. Giller. 2006. Soil factors affecting growth of East African highland bananas (Aaa-Ea, cv Kisansa) tissue-culture plants on a ferralsol in central Uganda. Paper presented at the 23rd SSSEA Conference, 20–24 November 2006, Masaka, Uganda.
- Onamu, R.P.K., E. Njoroge, C.J. Kimani, C.D. Kedera, and **P. Ntawuruhunga**. 2006. Phytosanitary measures in the management of virus diseases in cassava germplasm at Kephis, 5–9 December 2005 Kampala, Uganda.
- Opoku, S.Y., **M. Kolesnikova-Allen**, E.G. Asante, and Y. Adu-Ampomah. 2006. Genetic diversity and profile of cocoa planting materials in Ghana cocoa farms. Paper presented at the Fifth INGENIC Workshop on Cocoa Breeding for Farmers' Needs, 15–17 October 2006, San Jose, Costa Rica.
- Paul, C., **R. Bandyopadhyay**, M. Twizeyimana, C.B. Hill, and G.L. Hartman. 2006. Potential of detached leaves for evaluation of rust resistance. Paper presented at the 11th Biennial Conference of Molecular Biology of the Soybean, Lincoln, Nebraska, USA.
- Pokou, N.D., J.A.K. N'Goran, **M. Kolesnikova-Allen**, A. Eskes, and A. Sangare. 2006. Genetic Diversity of Cocoa (*Theobroma Cacao* L.) Collected on Farms Using Microsatellite Markers. Paper presented at the 15th International Cocoa Research Conference, 9–14 October 2006, San Jose, Costa Rica.
- Pokou, N.D., J.A.K. N'Goran, **M. Kolesnikova-Allen**, A. Eskes, P. Lachenaud, and A. Sangare. 2006. Genetic diversity of cocoa populations (*Theobroma cacao* L.) after the first cycle of recurrent selection. Paper presented at the 15th International Cocoa Research Conference, 9–14 October 2006, San Jose, Costa Rica.
- Raji, A.A., B. Odeseye, C.E. Oriero, J. Akinyemi, T. Odunlami, F. Odeyemi, and I. Ingelbrecht**. 2006. Genetic transformation of cowpea (*Vigna unguiculata* L. Walp) via *Agrobacterium tumefaciens* using embryonic axis explants. Paper presented at the Joint Annual Meeting of the American Society of Plant Biologists, Canadian Society of Plant Physiologists, Société Canadienne de Physiologie Végétale, Boston, Massachusetts, 5–9 August 2006, Boston, USA.
- Schöber, B., **S. Hauser**, and R.A. Sikora. 2006. Suitability of *Pueraria phaseoloides*, *Chromoleana odorata*, and *Tithonia diversifolia* for nematode management in *Musa* cropping systems. Paper presented at the 58th International Symposium on Crop Protection. Gent, Belgium.

- Sonwa, D.J., **S.F. Weise**, A.A. Adesina, M. Tchatat, O. Ndoye, and D. Endamana. 2006. Adaptations of cocoa and coffee farmers' communities in the heart of remnant pristine forest of east Cameroon to institutional changes. Paper presented at the Forth Meeting of IUFRO Working Party 8 January 2003, 26–29 September 2006, Locorotondo, Bari, Italy.
- Taulya, G., **van Asten P.J.A.**, S.H. Okech, C.S. Gold, and T.K.W. Mugaga. 2006. Effect of drought on bunch weight of an East African highland banana (cv. Enyeru). Paper presented at the 23rd SSSEA Conference, 20–24 November 2006, Masaka, Uganda.
- The, C., A. Manfouasson, H. Calba, **A. Menkir**, and J.W. Horst. 2006. Establishment of heterotic patterns of maize (*Zea mays* L.) inbred lines with tolerance to acid soils. Paper presented at the International Plant Breeding Symposium, 20–25 August, Mexico.
- Thomas, D.**, H.F. Vismer, J.P. Rheeder, **R. Bandyopadhyay**, J.F. Leslie, and W.F.O. Marasas. 2006. *Fusarium* species on sorghum grains in Nigeria. Paper presented at the 14th Biennial Congress for the South African Society for Microbiology 9–12 April 2006, Pretoria, South Africa.
- Tripathi, L.**, J.N. Tripathi, and W.K. Tushemereirwe. 2006. Production of transgenic bananas resistant to *Xanthomonas* wilt disease in Eastern Africa. Paper presented at the 4th International Bacterial Wilt Symposium, 17–20 July, York, UK.
- Tripathi, L.** Fighting the East African *Xanthomonas* wilt pandemic [IITA News Article]. IITA, 2006 . Available from [http://www.iita.org/cms/details/banana\\_plantain\\_news\\_details.aspx?articleid=347&zoneid=268](http://www.iita.org/cms/details/banana_plantain_news_details.aspx?articleid=347&zoneid=268).
- Van Asten, P.J.A.** and **A.M. Fermont**. 2006. Is farmer knowledge guiding us in the right direction? Paper presented at the Farmer Field School Experiences Workshop on Land and Water Management in Africa, 24–28 April 2006, Jinja, Uganda.
- Van Asten, P.J.A.**, **S. Abele**, G. Blomme, P. Sanginga, B. Vanlauwe, N. Vigheri, L. Lunze, J. Walangululu, and A. Farrow. 2006. The role of bananas in eastern DR Congo. Paper presented at the MUSACO meeting, 18–22 September 2006, Limbe, Cameroon.
- Vroh Bi, I.** and **A. Tenkouano**. 2006. Assessment of linkage disequilibrium for candidate gene identification and marker-assisted breeding in *Musa* spp. (bananas and plantains). Paper presented at the Fifth Plant Genomics European Meetings, 11–14 October 2006, Venice, Italy.

Zhang, D., M. Boccara, S. Mischke, L. Motilal, **M. Kolesnikova-Allen**, N. Cryer, C. Turnbull, C. Lanaud, W. Philips-Mora, and D. Butler. 2006. Detection of mislabeled germplasm in cocoa collections using DNA fingerprinting with SSR markers. Paper presented at the 15th International Cocoa Research Conference, 9–14 October 2006, San Jose, Costa Rica.



*Women sorting yams. Yam is important in West Africa as a food staple and for 'rituals'*

## Audiovisual materials

- Cornet, D.** 2006. Vers une production durable d'ignames en Afrique de l'ouest, film DVD 32'. Cotonou, Bénin: CIRAD - FAO - INRAB
- Hauser, S.** 2006. Integrated pest management in plantain: a simple nematode control measure: boiling water treatment.
- Hauser, S. and C. Mekoa.** 2006. Invasion of plantain fields by *Chromolaena odorata*: effects of burning and mulching on biomass partitioning and nutrient uptake.
- Hauser, S., A. Nkakwa, C. Mekoa, and D. Amougou.** 2006. Performance of detached-corm and corm-fragment-generated plantain compared with conventional suckers in southern Cameroon.
- Hauser, S., D. Coyne, B. Schober, and F. Ngo Kanga.** 2006. Nematode control in plantain: methods, costs, yield responses.
- Kekeunou, S., **S. Weise, M. Tindo, S. Hauser, and J. Messi.** 2006. Fluctuation numérique du criquet puant dans les jachères naturelles et plantées du sud Cameroun: influence de *Chromolaena Odorata*,

## Others

- Dubois, T. and D. Coyne.** 2006. Endophytes: natural biodiversity bolstered to combat banana pests. *Geneflow* 52–52.
- Dubois, T., D. Coyne, P. Ntawuruhunga, T. Babaleye, A. Schoening, B. Harbers, and E. Koper.** 2006. IITA: Research to Nourish Africa. *Global Plant Letters* 18–19.
- A. Menkir, Ajala, S.O., A.Y. Kamara, and S.K. Meseka.** 2006. Progress in breeding tropical maize for adaptation to sub-optimal soil nitrogen at IITA. In Invited paper presented at the 42nd Illinois Corn Breeder's School, 6–7 March 2006, Champaign, Urbana, USA.
- Alene, A.D., and V.M. Manyong.** IITA featured at the 26th IAAE, Australia. *The Bulletin, IITA*, 2006/09/28 2006. Gnassounou, M. 2006. Lutte contre les maladies des plantes; vers la mise en réseau des laboratoires de cliniques de diagnostic. *La Nation* 1–5.



## Governing board

Seated, left to right: Michael Collinson, Gry Synnevåg, Hartmann (Director General), Mortimer Neufville (Chair), Bryan Harvey, Barbara Becker, Cees Karssen

Standing, left to right: Henri Maraite, Jenny Cramer (Board Secretary), Dean Lewis, Nthoana Tau-Mzamane, Israel Adu, Emmy Simmons, Adama Traoré

Missing from photo: Birger Møeller, Ama Pepple



Mortimer Hugh Neufville (Chair)  
Executive Vice President  
National Association of State  
Universities and Land Grant Colleges  
(NASULGC) USA

Aboulaye Babale  
Chair, Board of Trustees  
Institute of Agriculture Research  
for Development (IRAD)  
Yaoundé, Cameroon

Barbara Becker  
Executive Manager  
Swiss Centre for International  
Agriculture (ZIL)  
Zürich, Switzerland

Michael P. Collinson  
Agricultural Economist  
Goring-on-Thames, UK

Hartmann  
Director General  
IITA, Ibadan, Nigeria

Bryan Harvey  
Saskatoon, Canada

Akira Iriyama  
President, Sasakawa Peace  
Foundation  
Tokyo, Japan

Maurice Izard  
President of the Center of  
Montpellier (CIRAD)  
Montpellier, France

Abubakar Jauro  
Permanent Secretary  
Ministry of Environment, Abuja, Nigeria

Cees Karssen  
Plant Physiologist  
Wageningen, The Netherlands

Joy Kwesiga  
Gender Mainstreaming Division  
Academic Registrar's Department  
Makerere University, Kampala, Uganda

Henri Maraite  
Université Catholique de Leuven  
Belgium

Birger Lindberg Møeller  
Royal Veterinary & Agricultural  
University (RVAU)  
Denmark

O. O. Ogunkua  
Permanent Secretary  
Federal Ministry of Agriculture and  
Rural Development, Abuja, Nigeria

O.C. Onwudike  
Vice Chancellor  
Michael Okpara University of  
Agriculture,  
Umudike, Nigeria

Gry Synnevag  
Center for International Environment  
& Development Studies  
Agricultural University of Norway  
Tivoli, Norway

Adama Traoré  
Chair  
Comité National de la Recherche  
Agronomique (CNRA)  
Bamako, Mali



IITA scientists

- Abaidoo, Robert C.  
Soil Microbiologist
- Abass, Adebayo Busura  
Coordinator, SSCPP
- Abele, Steffen  
Agricultural Economist
- Adekunle, Wale Adolphus  
MIS Specialist
- Agboka, Komi  
Insect Ecologist
- Ajala, Oyewole  
Maize Breeder
- Ajeigbe, Hakeem  
Crop Livestock Specialist
- Akoroda, Malachy Oghenovo  
Agronomist
- Alene, Arega D  
Impact Assessment Economist
- Amaza, Paul Sambo  
Agricultural Economist
- Asiedu, Robert  
Yam Breeder
- Ayodele, Awo Marie  
Plant Pathologist
- Baah, Faustina Dufie  
Food Technologist
- Badu-Apraku, Baffour  
Maize Breeder
- Baiyeri, Paul K.  
Crop Management Specialist
- Bandyopadhyay, Ranajit  
Pathologist
- Beed, Fen Douglas  
Weed Pathologist
- Berkhout, Ezra David  
Production Economist
- Boons, Peter  
Entomologist
- Chikoye, David  
Weed Scientist
- Coulibaly, Ousmane  
Agricultural Economist
- Coyne, Daniel Leigh  
Nematologist
- David, Soniia  
STCP Tech Transfer Specialist
- de Haan, Noline  
Rural Sociologist
- Dixon, Alfred G.  
Cassava Breeder
- Dubois, Thomas L M  
Entomologist
- Dumet, Dominique Juliette  
Genebank Conservation Sp.
- Emechebe, Alpho Mgbanu  
Coordinator, KKM PLS
- Ezedinma, Chukwuma Ikechukwu  
Economist
- Fatokun, Christian A.  
NABP Coordinator
- Ferguson, Morag,  
Plant Molecular Geneticist
- Fermont, Anneke Marijke  
Legume Agronomist
- Fiaboe, Komi M.  
Banana Economist
- Gockowski, Jim J.  
Agricultural Economist

Goergen, Georg Entomologist	Kaur, Manjeet Plant Molecular Biologist
Gondwe, Wilson T. Banana Crop Mgt Specialist	Kikuno, Hidehiko Yam Physiologist
Gyamfi, Isaac Kwadwo Ghanaian NPP Manager	Kim, Dong-Jin D Coord., SSA-CP in SADC
Hanna, Rachid Acarologist	Kolesnikova-Allen, Maria Cocoa Geneticist
Hauser, Stefan Soil Physicist	Kolijn, Sicco S. Pharvest/Agro-enterprise Development Specialist
Hearne, Sarah Jane Plant Molecular Geneticist	Kooyman, Christiaan Grasshopper/IPM Specialist
Hell, Kerstin Postharvest Biologist	Legg, Christopher Alan Geospatial Lab. Manager
Helsen, Jan PROSAB Manager	Legg, James Virologist
Herron, Caroline Mary Virologist	Lema, Albert Coordinator, DR Congo Cassava Project.
Hofs, Susann Specialist, PTD	Lemchi, Jones Ibe Zonal Manager (CMD)
Ihedioha, Onyema Damia Agri-Processing Specialist	Mahungu, Nzola-Meso Breeder/Agronomist,
Ingelbrecht, Ivan Luc Head, Biotechnology Lab	Makinde, Kehinde Olaniyi Agri-Marketing Specialist
James, Braima D. Entomologist/Coord. SP-IPM	Manyong, Victor A.W. Agricultural Economist
Jonas, MVA MVA Cameroonian NPP Manager	Maroya, Norbert Godonou WASNET Coordinator
Junge, Birte Soil Conservation Specialist	Maziya-Dixon, Bussie Maize Food Technologist
Kamara, Alpha Yaya Agronomist	Menkir, Abebe Maize Breeder
Kanju, Edward Eneah Cassava Breeder/Pathologist	

Mkumbira, Jonathan

Cassava Breeder

Muranaka, Satoru

Cowpea Breeder

Mwangi, Francis Maina

Plant Pathologist

Nankinga, Caroline Mary

Insect Pathologist

Neuenschwander, Peter

Emeritus Scientist

Nkamleu, Blaise Guy

Yam Economist

Ntawuruhunga, Pheneas

Coordinator, SARRNET

Nwoke, Chike O

Soil Scientist

Nziguheba, Generose

Soil Fertility Specialist

Odu, Babajide

Germplasm Health Scientist

Ogbe, Francis O

Virologist

Okafor, Christopher

Nigeria National Pilot Manager

Okechukwu, Richardson Uchenna

Database/Statistics

Okoro, Eme

Project Manager (CMD)

Pay-Bayee, MacArthur

Liberia National Project Manager

Ragama, Philip

Statistician

Raji, Adebola A.

Biotechnologist

Rusike, Joseph

Coord., SSA-CP in SADC

Sanni, Lateef Oladimeji

Cassava Postharvest Specialist

Ssemakula, Gorrettie Nankinga

Cassava Breeder

Tamo, Manuele

Insect Ecologist

Tarawali, Gbassay

Project Manager (CEDP)

Tenkouano, Abdou

Plantain/Cassava Breeder

Tipilda, Annita

Anthropologist

Toko, Muaka

Acarologist

Tripathi, Leena

Biotechnologist

van Asten, Piet

Banana Agronomist

Weise, Stephan F.

STCP Manager

Yade, Mbaye

Regional Coordinator, SAKSS

Yapo, Robert Assamoi

Côte d'Ivoire NNP Manager

## Abbreviations used in this report

CBO	community-based organization
CBSD	cassava brown streak disease
CIDA	Canadian International Development Agency
CGM	cassava green mite
CMD	cassava mosaic disease
DFID	Department for International Development (UK)
EACMV-Ug	East Africa Cassava Mosaic Virus-Uganda variant
EAHB	East African highland banana
ESARC	Eastern and Southern Africa Regional Center
FAO	Food and Agriculture Organization of the United Nations
GIS	geographic information system
IBC	IITA's Institutional Biosafety Committee
ICRISAT	International Crops Research Institute for the Semi-Arid Tropics
IIBC	International Institute of Biological Control
ILRI	International Livestock Research Institute
LEXSYS	Legume Expert System
MAS	Marker assisted selection
MDG	Millenium Development Goals
NARO	National Agricultural Research Organization
NARS	national agricultural research systems
NGO	nongovernmental organizations
NGN	Nigerian Naira
NGS	northern Guinea savanna
NRI	Natural Resources Institute (UK)
QPM	quantity protein maize
QTL	quantitative trait loci
PROSAB	Promoting sustainable agriculture in Borno State
RUVT	regional uniform variety trials
SARRNET	Southern Africa Root Crops Research Network
SP-IPM	Systemwide Program on Integrated Pest Management
SS	Sudan savanna
WECAMAN	West and Central Africa Maize Network

## IITA locations

### IITA-Nigeria

Ibadan (Headquarters)  
PMB 5320, Ibadan  
Oyo State, Nigeria  
Tel.: (+234 2) 241 2626  
Fax.: (+234 2) 241 2221  
e-mail: IITA@cgiar.org

Abuja Farm, PMB 82,  
Beside old water works  
Kubwa Village, Abuja  
Tel.: (+234) 9 5239598  
Cell.: (+234) 803 4023910

Kano  
Sabo Bakin Zuwo Road  
PMB 3112, Kano  
Nigeria  
Fax: (+234 64) 645352  
Telephone: (+234 64) 645350,  
645351, 645353, 624046  
E-mail: IITA-Kano@cgiar.org

Lagos  
Plots 531 & 532 WEMPCO Road,  
Ogba Estate  
P.O. Box 145, Ikeja, Lagos  
Cell.: (+234) 803 4023913

Maiduguri  
Kwajaffa Road, off Gambole Road,  
GRA,  
PO Box 935, Maiduguri, Borno State,  
Nigeria  
Phone: (+234 76) 231732  
Fax: (+234 76) 231732  
Email: iitaprosab@cgiar.org

Onne  
PMB 008, Nchia-Eleme  
Port Harcourt, Rivers State  
Nigeria  
Fax: (+871) 682341882 (INMARSAT)  
Telephone: (+871) 682341880,  
761841076

IITA-Benin  
BP 08-0932, Cotonou, Benin  
Telex: 5329 ITABEN  
Fax: (+229) 21 35 05 56  
Tel.: (+229) 21 35 01 88  
E-mail: IITA-Benin@cgiar.org

IITA-Cameroon  
Mbalmayo  
BP 2008 (Messa), Yaoundé  
Fax: (+237) 2237437,  
Tel.: (+237) 2237434, 2237518  
E-mail: IITA-Cameroon@cgiar.org

IITA-Democratic Republic of Congo  
Immeuble Mobil  
198, Avenue Isiro-commune  
de la Combe  
Kinshasa, R.D. Congo  
Tel: (+243) 98 535 939  
Fax: (+243) 880 7737  
E-mail: IITA-DRC@cgiar.org

IITA-Ghana  
West Africa Seed and Planting Material  
Network (IITA/GTZ/WASNET)  
P.O. Box 9698, K.I.A, Accra, Ghana  
Tel/Fax: (+233) 21 765567  
Cell.: (+233) 24 329531  
E-mail: [IITA-Ghana@cgiar.org](mailto:IITA-Ghana@cgiar.org)

IITA-Kenya  
Plant Biodiversity and Genomics  
Facility  
c/o International Livestock Research Insti-  
tute (ILRI)  
P.O. Box 30709, Nairobi, Kenya  
Tel.: (+254 2) 630743  
Fax.: (+254 2) 631499  
E-mail: [IITA-Kenya@cgiar.org](mailto:IITA-Kenya@cgiar.org)

IITA-Malawi  
SADC/IITA/SARRNET Project  
Chitedze Research Station  
P.O. Box 30258  
Lilongwe 3, Malawi  
Tel.: (+265) 1 707014  
Fax: (+265) 1 707026  
E-mail: [IITA-Malawi@cgiar.org](mailto:IITA-Malawi@cgiar.org)

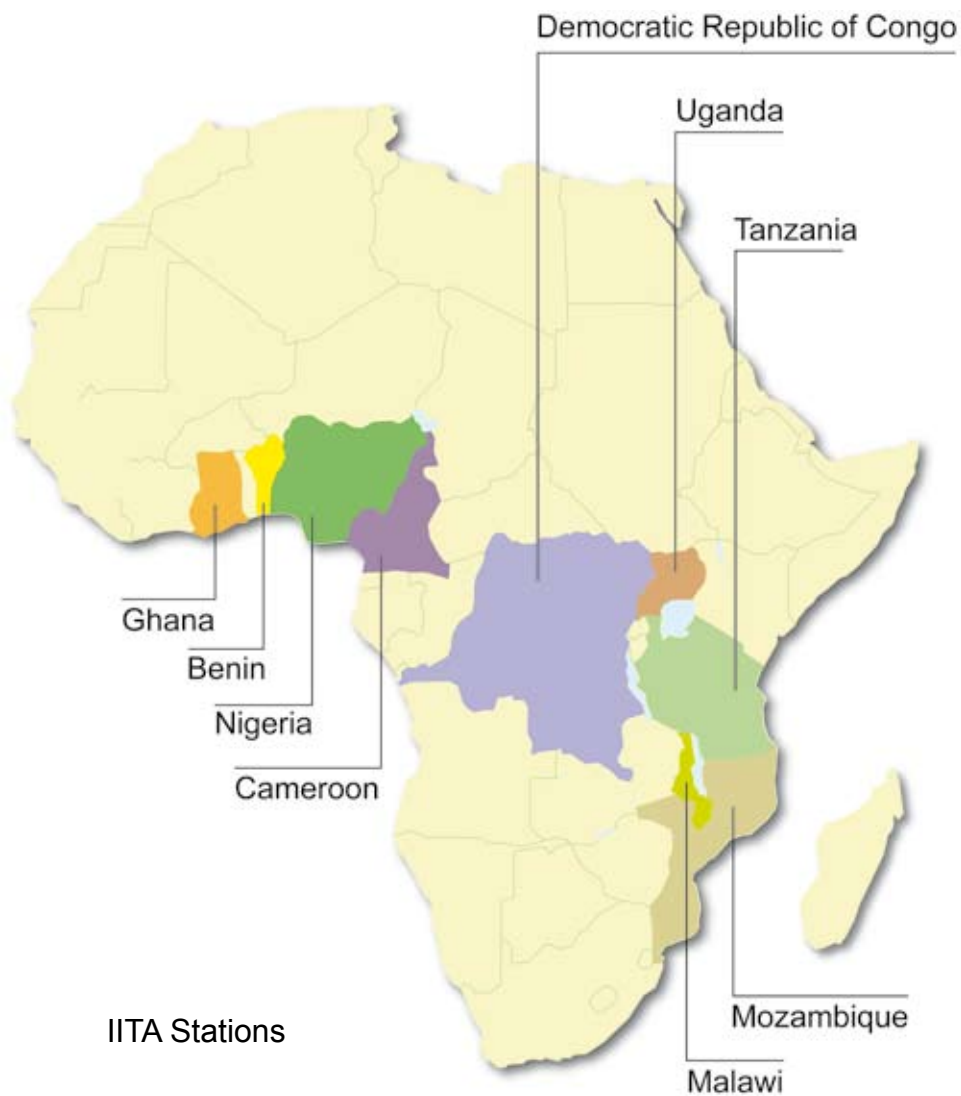
IITA-Mozambique  
SADC/IITA/SARRNET/INIA  
P.O. Box 2100, Av. FPLM No. 2698  
Maputo  
Mozambique  
Telefax: (+258 1) 461610  
E-mail: [IITA-Mozambique@cgiar.org](mailto:IITA-Mozambique@cgiar.org)

IITA-Tanzania  
SADC/IITA/SARRNET  
c/o Mikochoeni Agricultural Research  
Institute  
PO Box 6226, Dar es Salaam, Tan-  
zania  
Tel.: (+255 22) 2700092  
Fax: (+255 22) 2700090  
E-Mail: [IITA-Tanzania@cgiar.org](mailto:IITA-Tanzania@cgiar.org)

IITA-Uganda  
PO Box 7878, Kampala, Uganda  
Fax: (+256 41) 223494  
Tel.: (+256 41) 223445, 221009  
E-mail: [IITA-Uganda@cgiar.org](mailto:IITA-Uganda@cgiar.org)

International Mailing address (UK)  
c/o Lambourn (UK) Limited,  
Carolyn House 26 Dingwall Rd.,  
Croydon, CR9 3EE, England  
Tel.: (+44) 020 8686 9031  
Fax.: (+44) 020 8681 8583





**IITA**  
*Research to Nourish Africa*

ISSN 0331 4340