

Young Swimmers' Classification Based on Kinematics, Hydrodynamics, and Anthropometrics

Tiago M. Barbosa,^{1,7} Jorge E. Morais,^{2,7} Mário J. Costa,^{3,7}
 José Goncalves,^{2,4} Daniel A. Marinho,^{5,7} and António J. Silva^{6,7}

¹Nanyang Technological University; ²Polytechnic Institute of Bragança; ³Polytechnic Institute of Guarda;
⁴Robis Research Group from INESC TEC; ⁵University of Beira Interior; ⁶University of Trás-os-Montes and Alto Douro;
⁷Research Center in Sports Sciences, Health and Human Development (CIDESD)

The aim of this article has been to classify swimmers based on kinematics, hydrodynamics, and anthropometrics. Sixty-seven young swimmers made a maximal 25 m front-crawl to measure with a speedometer the swimming velocity (v), speed-fluctuation (dv) and dv normalized to v (dv/v). Another two 25 m bouts with and without carrying a perturbation device were made to estimate active drag coefficient (C_{Da}). Trunk transverse surface area (S) was measured with photogrammetric technique on land and in the hydrodynamic position. Cluster 1 was related to swimmers with a high speed fluctuation (ie, dv and dv/v), cluster 2 with anthropometrics (ie, S) and cluster 3 with a high hydrodynamic profile (ie, C_{Da}). The variable that seems to discriminate better the clusters was the dv/v ($F = 53.680$; $P < .001$), followed by the dv ($F = 28.506$; $P < .001$), C_{Da} ($F = 21.025$; $P < .001$), S ($F = 6.297$; $P < .01$) and v ($F = 5.375$; $P = .01$). Stepwise discriminant analysis extracted 2 functions: Function 1 was mainly defined by dv/v and S (74.3% of variance), whereas function 2 was mainly defined by C_{Da} (25.7% of variance). It can be concluded that kinematics, hydrodynamics and anthropometrics are determinant domains in which to classify and characterize young swimmers' profiles.

Keywords: swimming, kinematics, hydrodynamics, anthropometrics, classification

Talent identification in swimming is one of the most challenging tasks for researchers and sport analysts. Research on expertise, talent identification, and development has tended to be monodisciplinary.¹ Traditional approaches focused on the role of one single scientific field or trait in expertise and talent identification, such as the relationship between anthropometrics and performance that was so popular in the 1970s and 1980s. However, several characteristics (ie, scientific fields, domains, and variables) are related to performance. Hence, expertise and talent identification were started to be seen as a multidisciplinary phenomenon. Multiple test batteries were implemented to identify talented athletes. Exploratory designs (notably comparison of cohort groups and correlational studies) were conducted to identify the scientific domains and

independent variables that determine the performance. In contrast to more traditional approaches, a potentially more valuable conceptual framework for the classification of expertise and talent exists, understanding young athletes as multifactorial, complex, and dynamical systems. The potential for interaction between performance determinants (ie, scientific fields, domains, and variables) provides the platform for different and diverse patterns of behavior to emerge on an individual basis.¹ To do so, cluster analysis, considering several scientific disciplines, domains, and variables, might be a solution² as movement variability should not be disregarded.³ Nevertheless, one significant advantage of behavioral clustering is that no previous assumptions about the structure of the dataset are required to identify similar behaviors. This is a regular procedure in marketing and advertising, for instance, to identify consumer buying behaviors and thereafter create individual consumer centric strategies. Cluster solutions obtained come from “emergent behavior” and not from “pre-existing assumptions.” Thereafter with a classification system developed, it will be straightforward to identify, classify, and design intervention programs accordingly for these and for new athletes in the future.

Recently, a research trend has emerged to try understand the links among all the variables that determine the swimming performance.⁴ Biomechanical characteristics (including kinematics, kinetics, and anthropometrics) play a major role (approx. 50–60%) in children's swimming performance.⁵ So, the classification of young swimmers based on such characteristics can be a useful tool for talent identification and has never been attempted before.

Swimming is characterized as being an accelerated motion, where the changes in the acceleration within the stroke cycle can be assessed through the body's intracyclic variations of the horizontal velocity (dv).⁶ So, Newton's law of motion

Tiago M. Barbosa is with Nanyang Technological University, Singapore, and with the Research Center in Sports Sciences, Health and Human Development (CIDESD), Vila Real, Portugal. Jorge E. Morais is with the Polytechnic Institute of Bragança and with the Research Center in Sports Sciences, Health and Human Development (CIDESD), Vila Real, Portugal. Mário J. Costa is with the Polytechnic Institute of Guarda and with the Research Center in Sports Sciences, Health and Human Development (CIDESD), Vila Real, Portugal. José Goncalves is with the Polytechnic Institute of Bragança and with the Robis Research Group from INESC TEC, Portugal. Daniel A. Marinho is with the University of Beira Interior, Covilhã, and with the Research Center in Sports Sciences, Health and Human Development (CIDESD), Vila Real, Portugal. António J. Silva is with the University of Trás-os-Montes and Alto Douro, Vila Real, and with the Research Center in Sports Sciences, Health and Human Development (CIDESD), Vila Real, Portugal. Address author correspondence to Tiago M. Barbosa at tiago.barbosa@nie.edu.sg.

$$a = \frac{F}{m} \quad (1)$$

where F is the resultant force, m the body mass, and a the acceleration can be conceptually changed to

$$dv = \frac{Pr + D}{m} \quad (2)$$

where dv is the speed fluctuation, Pr is the total propulsive force, D is the hydrodynamic drag force, and m is the swimmer's body mass. It is the resultant vector sum of Pr by D that plays a main part in the dv throughout the swim, as m is fairly constant (neglecting the added mass that a swimmer carries out; to be strict, $m = \text{body mass} + \text{added water mass}$).⁷ While actively swimming, D is a Newtonian force with the name of active drag (D_a) and calculated as

$$D_a = \frac{1}{2} \cdot \rho \cdot v^2 \cdot S \cdot C_{Da} \quad (3)$$

where D_a is the swimmer's active drag, ρ the density of the water (assumed to be 1000 kg/m³), v the swimmer's velocity, and S his/her projected frontal surface area. From Equations 2 and 3, we find a theoretical relationship between kinematics (eg, dv and v), hydrodynamics (eg, C_{Da}), and anthropometrics (eg, S). However, humans while performing a motor task (in this case, swimming) can select different strategies to reach the same outcome, as they might be considered "overdeterminate" systems; that is, there is the ability of elements that are structurally different to reach the same function or yield the same output.⁸ For the case of the D_a , eventually young swimmers also adopt different, very unique, and individual approaches to change it.

Traditionally, sports performance research is based on the universalistic perspective. Data analysis is conducted considering the sample or the group's main trend (eg, average differences, average variations, etc.). As a consequence, the individuality of each subject is "diluted" by the main trend of the overall sample and considered as "noise." The assessment of individual trends and behaviors is a fair novelty in swimming.⁹ Accordingly, to the best of our knowledge, a classification of young swimmers based on their individual biomechanical characteristics has never been attempted. The aim of this technical note has been to develop a classification system for young talented swimmers based on kinematical, hydrodynamic, and anthropometrical characteristics.

Methods

Sixty-seven young swimmers (34 girls and 33 boys, 12.83 ± 1.26 years old, 159.29 ± 8.569 m of height, 49.40 ± 9.22 kg of body mass, and 1–2 Tanner stages) with at least 4 years of experience in competitive swimming, participating on regular basis in regional- and national-level competitions volunteered as subjects.

Each subject swam a maximal 25-m front-crawl trial with a push-off start. A speedometer cable (Swim speedometer, Swimsportec, Hildesheim, Germany) was attached to the swimmer's hip.¹⁰ The speedometer was placed in the forehead wall of the swimming pool, about 0.2 m above the water surface. A software's interface in LabVIEW (v. 2009) was used to acquire ($f = 50$ Hz), display, and process pairwise velocity-time data online during the trial. To transfer data from the speedometer to the software application, a

12-bit resolution acquisition card (USB-6008, National Instruments, Austin, Texas, USA) was used. Thereafter, data were exported to signal-processing software (AcqKnowledge v. 3.5, Biopac Systems, Santa Barbara, USA) and filtered with a 5-Hz cut-off low-pass 4th-order Butterworth filter.¹⁰ This apparatus allowed measuring the mean swimming velocity within the stroke cycle (v). Considering the theoretical background (ie, Equation 2, but more details on this can be obtained elsewhere⁴), intracyclic variation of the horizontal velocity of the hip (dv) was measured as:¹⁰

$$dv = \frac{\sqrt{\frac{\sum_i (v_i - \bar{v})^2 \cdot F_i}{n}}}{\frac{\sum_i v_i \cdot F_i}{n}} \cdot 100 \quad (4)$$

where dv is the intracyclic variation of the horizontal velocity of the hip, v the mean swimming velocity, v_i the instant swimming velocity, F_i the acquisition frequency, and n the number of observations. Thereafter, dv was also normalized to the swimming velocity (dv/v). It should be considered that there is an overestimation of approximately 7% analyzing the center of mass forward velocity based on the hip's assessment.¹¹

D_a was calculated with the velocity perturbation method.¹² Each swimmer performed two other maximal 25-m trials at front crawl (with and without carrying the perturbation device). Swimming velocity was assessed at 13m (between 11th and 24th m from the push-off wall). The time spent to cover this distance was measured with a manual stopwatch (Golfinho Sports MC 815, Aveiro, Portugal) by two expert evaluators (ICC = 0.97), and the mean value was used for further analysis. D_a was calculated as follows.¹²

$$D_a = \frac{D_b \cdot v_b \cdot v^2}{v^3 - v_b^3} \quad (5)$$

where D_a is the swimmer's active drag at maximal velocity, D_b the resistance of the perturbation buoy, and v_b and v the swimming velocities with and without the perturbation device, respectively. The drag of the perturbation buoy was obtained from the manufacturer's technical description (ie, buoy-drag characteristics and its velocity).¹² Active drag coefficient (C_{Da}) was calculated by changing Equation 3 to

$$C_{Da} = \frac{2 \cdot D_a}{\rho \cdot S \cdot v^2} \quad (6)$$

where ρ is the density of the water (assumed to be 1000 kg/m³), D_a the swimmer's active drag, v the swimmer's velocity, and S the swimmer's projected frontal surface area.

S was measured with a photogrammetric technique,^{7,13} taking pictures of the swimmers with a digital camera (DSC-T7, Sony, Tokyo, Japan) in the transverse plane from above.¹³ Subjects were on land, standing in the upright and hydrodynamic position wearing a regular textile swim body suit, a cap, and goggles.⁷ On the camera's shooting field, a calibration frame with 0.945 m length was placed side by side with the swimmer at the shoulder level. S was measured from the subject's digital photo with specific area-measuring software (Udruler, AVPSOFT, USA).

Swimming performance was also assessed, measuring the time of the 100-m freestyle event during an official short-course competition at regional or national level. The time gap between

biomechanical data collection and the 100-m freestyle race was less than two weeks.¹⁴

Two clustering approaches to increase confidence in the stability of the emergent profiles were used: (i) hierarchical cluster analysis using Ward's linkage method with the squared Euclidean distance measure to provide guidance as to the number of clusters represented in the data; (ii) k-means (nonhierarchical) cluster analysis. Standardized z scores (ie, normalization process allowing the comparison of datasets with different units and/or magnitudes) of the selected variables were used in the clustering analysis. To identify the variables with the highest influence in each cluster, a cluster's ANOVA and discriminant analysis (stepwise method) tests were computed ($P < .05$). MANOVA using cluster group as the independent variable and swimmers' characteristics (ie, gender and swim performance) were also computed ($P < .05$).

Results

Coefficient of determination (R^2) was used to test several cluster solutions (from 1 to 9; ie, $1 < k < 9$). The three-cluster solution ($k = 3$) was the one with the highest power with lower gains after the 4th cluster ($R^2 = .709$) (Figure 1). Descriptive statistics revealed a moderate-large variation of all selected variables (Table 1).

ANOVA statistics revealed significant variations in all tested variables (Table 2). Cluster 1 was characterized by high values of speed fluctuation (ie, dv and dv/v). Cluster 2 was characterized by high value of anthropometrics (ie, S). Cluster 3 was associated with the high hydrodynamic profile (ie, C_{Da}). The variable that seems to discriminate the clusters better was the dv/v ($F = 53.680$; $P < .001$), followed by dv ($F = 28.506$; $P < .001$), C_{Da} ($F = 21.025$; $P < .001$), S ($F = 6.297$; $P < .01$), and v ($F = 5.375$; $P = .01$). MANOVA showed a nonsignificant multivariate effect of gender and swimming performance in cluster groups ($\Lambda_{Wilks's} = 0.808$; $\Lambda_{Pillai's} = 0.194$; $P = .08$).

The stepwise discriminant analysis extracted two functions including the dv/v , C_{Da} and S (Figure 2). Function 1 is mainly defined by dv/v and C_{Da} explaining 74.3% of variance ($\Lambda = 0.179$; $\chi^2(6) = 104.976$; $P < .001$); function 2 is mainly defined by C_{Da} and S explaining 25.7% of variance ($\Lambda = 0.569$; $\chi^2(2) = 34.359$; $P < .001$):

$$\text{Function 1} = 0.170 \cdot S - 0.750 \cdot C_{Da} + 1.487 \cdot dv/v - 0.009 \quad (7)$$

$$\text{Function 2} = -0.684 \cdot S + 0.920 \cdot C_{Da} + 0.591 \cdot dv/v + 0.025 \quad (8)$$

Regarding data validation, 89.2% of the original group were correctly classified (Table 3), with classification functions as follows:

$$\text{Cluster 1,} \\ \text{kinematics} = 44.198 \cdot S - 2.852 \cdot C_{Da} + 4.604 \cdot dv/v - 41.280 \quad (9)$$

$$\text{Cluster 2,} \\ \text{anthropometrics} = 49.082 \cdot S - 0.305 \cdot C_{Da} + 2.752 \cdot dv/v - 28.175 \quad (10)$$

$$\text{Cluster 3,} \\ \text{hydrodynamics} = 37.788 \cdot S + 17.963 \cdot C_{Da} + 2.195 \cdot dv/v - 24.175 \quad (11)$$

Discussion

The aim of this research was to develop a classification system for young talented swimmers based on kinematical, hydrodynamic, and anthropometrical characteristics. Three clusters, based on dv and dv/v (cluster 1, labeled "kinematics"), S (cluster 2, labeled "anthropometrics"), and C_{Da} (cluster 3, labeled "hydrodynamics"), were obtained. The stepwise discriminant analysis extracted two functions including the dv/v , C_{Da} , and S , explaining 74.3% and 25.7% of the variance, respectively.

Traditionally, talent identification research is based on the identification of variables that might be related to the performance during childhood and adulthood. Several authors conducted exploratory studies to identify some of those variables with potential to predict the swimming performance.¹⁵⁻¹⁷ This exploratory research involves, most of the times, the design of cohort or correlational studies. Researchers applied bivariate tests to know the empirical relationship between two variables (one of these is the performance). Kinematics (as happens for cluster 1),^{18,19} anthropometrics (cluster 2),²⁰ and hydrodynamics (cluster 3)²¹ are highly related with young swimmers' performance. However, swimming performance is a multifactorial phenomenon where several variables play a role. Hence, one of the main limitations in this exploratory research is that it does not consider the interaction and/or the relationships between all the variables involved.

To solve this limitation, deterministic models were developed, with structural equation modeling, to explain the relationships between performance and determinant variables in young swimmers. Structural equation modeling is a mathematical procedure for testing and estimating causal relationships of several variables.

Table 1 Descriptive statistics of the selected variables

	v (m/s)	dv (%)	dv/v (a.u.)	S (m ²)	C_{Da} (dimensionless)	100 m freestyle (s)
Mean	1.27	9.32	7.45	0.70	0.31	71.30
1 SD	0.19	2.73	2.47	0.13	0.15	6.12
Minimum	0.81	4.57	3.63	0.51	0.14	58.44
Percentile 25	1.15	8.00	5.85	0.62	0.20	67.02
Percentile 50	1.30	9.00	6.96	0.69	0.27	71.07
Percentile 75	1.38	10.05	8.66	0.75	0.39	76.40
Maximum	1.71	21.20	15.04	1.24	1.05	81.12

Note. v , swimming velocity; dv , speed fluctuation; dv/v , speed fluctuation normalized to swimming velocity; S , trunk transverse surface area; C_{Da} , active drag coefficient.

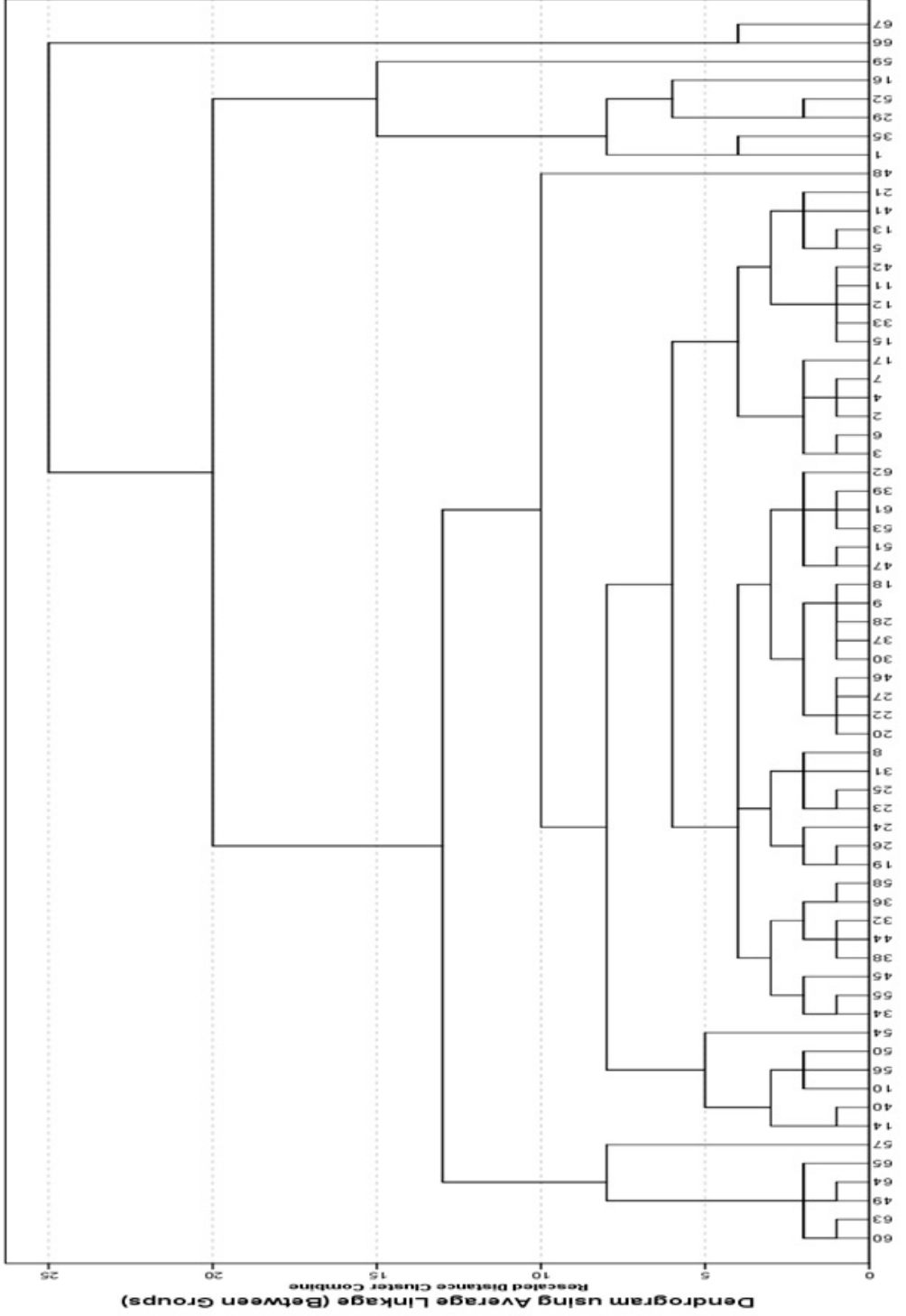


Figure 1 — Dendrogram of the cluster analysis.

Table 2 Descriptive and summary ANOVA statistics by clustering and cluster center (C)

	Cluster 1 (n = 16)			Cluster 2 (n = 33)			Cluster 3 (n = 17)				
	M ± SD	C	z	M ± SD	C	z	M ± SD	C	z	F	P
v	1.14 ± 0.16	-0.66458	1.32 ± 0.19	0.24	0.24149	0.18	1.31 ± 0.16	0.18697	0.18	5.375	0.01
dv	12.58 ± 3.38	1.20276	8.58 ± 1.36	-0.27	-0.27066	-0.57	7.75 ± 1.52	-0.57799	-0.57	28.506	<0.001
dv/v	10.99 ± 2.24	1.40908	6.60 ± 1.32	-0.34	-0.34220	-0.60	5.94 ± 1.21	-0.60843	-0.60	53.680	<0.001
S	0.67 ± 0.12	-0.28150	0.75 ± 0.14	0.39	0.39648	-0.50	0.63 ± 0.07	-0.50469	-0.50	6.267	<0.01
C_{Da}	0.25 ± 0.09	-0.32034	0.24 ± 0.07	-0.41	-0.41784	1.04	0.47 ± 0.20	1.04169	1.04	21.025	<0.001

Note. v , swimming velocity; dv , speed fluctuation; dv/v , speed fluctuation normalized to swimming velocity; S , trunk transverse surface area; C_{Da} , active drag coefficient.

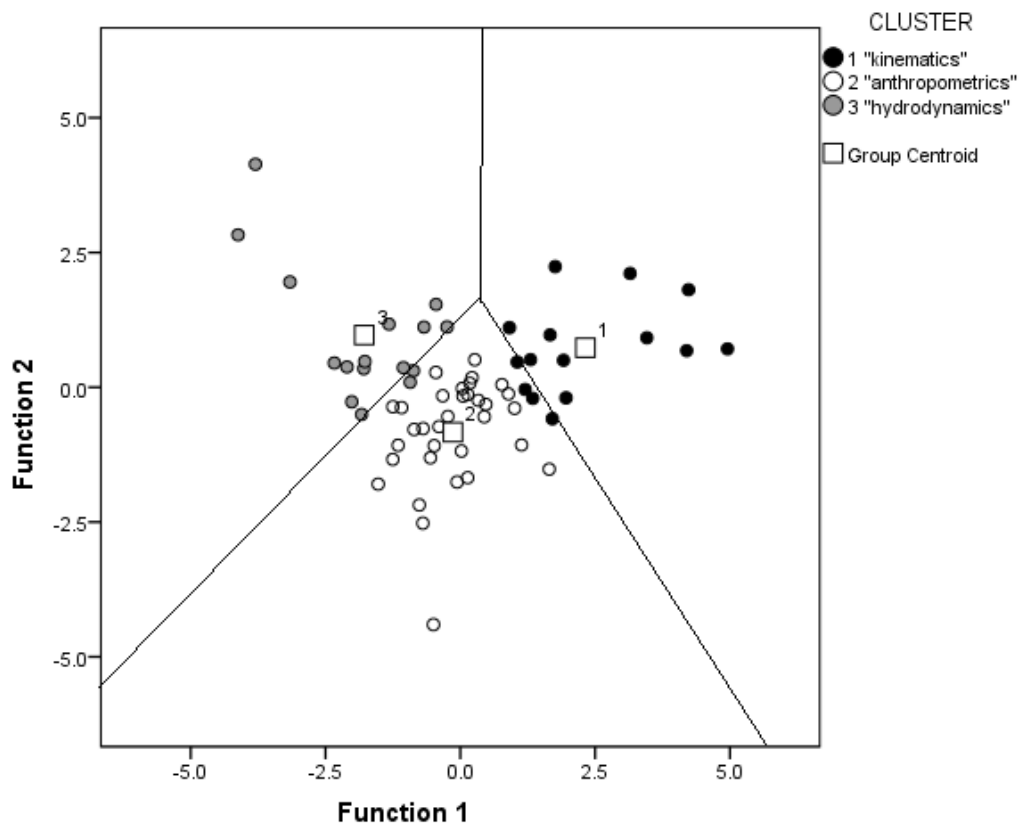
Table 3 Cross-tabulation of group membership and distance between centers

		Predicted			Total
		Cluster 1	Cluster 2	Cluster 3	
Original, n (%)	Cluster 1	12 (66.6)	4 (33.3)	0 (0)	16 (100)
	Cluster 2	0 (0)	33 (100)	0 (0)	33 (100)
	Cluster 3	0 (0)	4 (23.5)	13 (76.5)	17 (100)
	Ungrouped	1 (50)	0 (0)	0 (0)	1 (100)
Cross-validation, n (%)	Cluster 1	12 (66.6)	4 (33.3)	0 (0)	16 (100)
	Cluster 2	0 (0)	33 (100)	0 (0)	33 (100)
	Cluster 3	0 (0)	3 (17.6)	14 (82.4)	17 (100)
	Ungrouped	1 (50)	0 (0)	0 (0)	1 (100)
Distance between centers	Cluster 1	—	2.555	3.142	—
	Cluster 2	2.555	—	1.764	—
	Cluster 3	3.142	1.764	—	—

It is known that performance depends on energetics, kinematics, and efficiency;¹⁴ while kinematics is influenced by anthropometrics and kinetics.⁵ So, the interaction among these domains and how it determines the performance should be considered.

Nevertheless, besides exploratory and causality designs, a further step is given in this research as it is now possible to classify new swimmers engaged in talent identification programs in a very straightforward way. Based on the discriminant analysis, it is possible to classify other swimmers in a given cluster solution according to the functions or the equations extracted. After collecting dv/v , C_{Da} , and S data, new swimmers can be classified through the scores of the discriminant functions (equations 7 and 8) or the classification

functions (Equations 9–11). The scores of Equations 7 and 8 are used as coordinates in a Cartesian system (x, y; function 1; function 2) to define the position of the new swimmer in the territorial map (Figure 2). As it presents the region frontier and the centroid of the cluster solutions, it becomes visually possible to inspect to which cluster the new athlete is allocated. Another analytical procedure to classify swimmers is to use Equations 9 to 11. From the three equations, the one with the highest score refers to the cluster where the new swimmer should be allocated to and “labeled.” In this sense, research and talent identification test batteries with young swimmers should consider a few variables from each one of these three domains and the application of the procedure described in this article.

**Figure 2** — Territorial map of the two canonical discriminant functions.

Classification of subjects happens on a regular basis in other scientific fields, such as in health sciences to classify patients with a given disease, syndrome, or condition.²² As in those fields, classification is useful so that: (i) practitioners would no longer need to produce a detailed explanation of the main outcomes (in this case, the performance and its determinant factors) but would rather classify it more broadly as being one of a few types; (ii) it would enable design training (ie, intervention) programs according to each category; (iii) it would make communication between practitioners quicker and easier. The three cluster solutions obtained (ie, cluster 1—kinematics, cluster 2—anthropometrics, and cluster 3—hydrodynamics) seem to be (i) easily identifiable in the field by practitioners; (ii) meaningful in terms of classification/diagnosis for coaches and sports analysts as well as; (iii) helpful in the design of more individualized training (ie, intervention) programs. For instance, a given swimmer is classified as being part of cluster 3 (hydrodynamics) after running the tests and the classification system. This means that his profile is mainly determined by a high C_{Da} . So, coaches could design an intervention program for him focused on technique drills, feedback with specific visual and kinesthetic cues with the goal to improve such trait.

However, some limitations should be observed: (i) overall performance depends on other domains not considered here (eg, genetics, strength and conditioning, physiology). It is well accepted that young swimmers training should have main focus on their coordination/technical enhancement and less on the energetic/physiological workout; (ii) the classification procedure reported here is only suitable for talent identification of young swimmers. Some care should be exercised when applying this model to adolescent and adult/elite swimmers; (iii) others have proposed accurate but more complex and time-consuming procedures for talent identification.²³

It can be concluded that kinematics (cluster 1), anthropometrics (cluster 2), and hydrodynamics (cluster 3) are determinant to classify and characterize young talented swimmers. With this technical note, we were able to report a quick, straightforward, affordable, and practical procedure for young swimmers' assessment and classification.

References

- Phillips E, Davids K, Renshaw I, Portus M. Expert performance in sport and the dynamics of talent development. *Sports Med.* 2010;40:271–283. [PubMed doi:10.2165/11319430-000000000-00000](#)
- Glazier PS, Wheat JS, Pease DL, Bartlett RM. Dynamic systems theory and the functional role of movement variability. In: Davids K, Bennett S, Newell K, eds. *Movement system variability*. Champaign, Illinois: Human Kinetics Publishers; 2006:49–72.
- Bartlett R, Wheat J, Robins M. Is movement variability important for sports biomechanists? *Sports Biomech.* 2007;6:224–243. [PubMed doi:10.1080/14763140701322994](#)
- Barbosa TM, Bragada JA, Reis VM, Marinho DA, Carvalho C, Silva AJ. Energetics and biomechanics as determining factors of swimming performance: Updating the state of the art. *J Sci Med Sport.* 2010;13:262–269. [PubMed doi:10.1016/j.jsams.2009.01.003](#)
- Morais JE, Jesus S, Lopes V, et al. Linking selected kinematical, anthropometrics and hydrodynamic variables to young swimmers performance. *Pediatr Exerc Sci.* 2012;24:649–664. [PubMed](#)
- Figueiredo P, Barbosa TM, Vilas-Boas JP, Fernandes RJ. Energy cost and body centre of mass' 3D intracycle velocity variation in swimming. *Eur J Appl Physiol.* 2012;112:3319–3326. [PubMed doi:10.1007/s00421-011-2284-6](#)
- Vilas-Boas JP, Costa L, Fernandes RJ, et al. Determination of the drag coefficient during the first and second gliding positions of the breaststroke underwater stroke. *J Appl Biomech.* 2010;26:324–331. [PubMed](#)
- Edelman GM, Gally JA. Degeneracy and complexity in biological systems. *Proc Natl Acad Sci USA.* 2001;98:13763–13768. [PubMed doi:10.1073/pnas.231499798](#)
- Bideault G, Hérault R, Seifert L. Data modelling reveals inter-individual variability of front crawl swimming. *J Sci Med Sport.* 2013;16:281–285. [PubMed doi:10.1016/j.jsams.2012.08.001](#)
- Barbosa TM, Morouço P, Jesus S, et al. The interaction between intracyclic variation of the velocity and mean swimming velocity in young competitive swimmers. *Int J Sports Med.* 2012;34:123–130. [PubMed doi:10.1055/s-0032-1312582](#)
- Fernandes RJ, Ribeiro J, Figueiredo P, Seifert L, Vilas-Boas JP. Kinematics of the Hip and Body Center of Mass in Front Crawl. *J Hum Kinet.* 2012;33:15–23. [PubMed doi:10.2478/v10078-012-0040-6](#)
- Kolmogorov S, Duplischeva O. Active drag, useful mechanical power output and hydrodynamic force coefficient in different swimming strokes at maximal velocity. *J Biomech.* 1992;25:311–318. [PubMed doi:10.1016/0021-9290\(92\)90028-Y](#)
- Morais JE, Costa MJ, Mejias EJ, Marinho DA, Silva AJ, Barbosa TM. Morphometric study for estimation and validation of trunk transverse surface area to assess human drag force on water. *J Hum Kinet.* 2011;28:5–13. [PubMed doi:10.2478/v10078-011-0017-x](#)
- Barbosa TM, Costa MJ, Marinho DA, Coelho J, Moreira M, Silva AJ. Modeling the links between age-group swimming performance, energetic and biomechanical profiles. *Pediatr Exerc Sci.* 2010;22:379–391. [PubMed](#)
- Garrido ND, Marinho DA, Reis VM, et al. Does combined dry land and aerobic training inhibit performance of young competitive swimmers? *J Sports Sci Med.* 2010;9:300–310. [PubMed](#)
- Ackland TR, Bloomfield J, Elliott BC, Blanksby BA. Talent identification for tennis and swimming. *J Sports Sci.* 1990;8:161–162.
- Poppleton WL, Salmoni AW. Talent identification in swimming. *J Hum Mov Stud.* 1991;20:85–100.
- Vitor FM, Böhme MT. Performance of young male swimmers in the 100 meters front crawl. *Pediatr Exerc Sci.* 2010;22:278–287. [PubMed](#)
- Silva A, Figueiredo P, Soares S, Seifert L, Vilas-Boas JP, Fernandes RJ. Front crawl technical characterization of 11- to 13-year-old swimmers. *Pediatr Exerc Sci.* 2012;24:409–419. [PubMed](#)
- Lätt E, Jürimäe J, Mäestu J, et al. Physiological, biomechanical and anthropometrical predictors of sprint swimming performance in adolescent swimmers. *J Sports Sci Med.* 2010;9:398–404. [PubMed](#)
- Kjendlie PL, Stallman RK. Drag characteristics of competitive swimming children and adults. *J Appl Biomech.* 2008;24:35–42. [PubMed](#)
- Toro B, Nester CJ, Farren PC. Cluster analysis for the extraction of sagittal gait patterns in children with cerebral palsy. *Gait Posture.* 2007;25:157–165. [PubMed doi:10.1016/j.gaitpost.2006.02.004](#)
- Pfeiffer M, Hohmann A. Application of neural networks in training science. *Hum Mov Sci.* 2012;31:344–359. [PubMed doi:10.1016/j.humov.2010.11.004](#)