

# An Automatic Method to Track Red Blood Cells in Microchannels

D. Pinho

Polytechnic Institute of Bragança, ESTiG/IPB, C. Sta. Apolonia, 5301-857 Bragança, Portugal.

F. Gayubo

Fundación CARTIF, División de Robótica y Visión Artificial, Parque Tecnológico de Boecillo, Parc. 205, 47151- BOECILLO, Valladolid, Spain.

A. Isabel

Polytechnic Institute of Bragança, ESTiG/IPB, C. Sta. Apolonia, 5301-857 Bragança, Portugal.  
ALGORITMI, Minho University, Campus de Azurém, 4800-058 Guimarães, Portugal.

R. Lima

Polytechnic Institute of Bragança, ESTiG/IPB, C. Sta. Apolonia, 5301-857 Bragança, Portugal.  
CEFT, FEUP, R. Dr. Roberto Frias, 4200-465 Porto, Portugal.

Image analysis is extremely important to obtain crucial information about the blood phenomena in microcirculation. The current study proposes an automatic method for segmentation and tracking red blood cells (RBCs) flowing through a 100  $\mu\text{m}$  Glass capillary. The original images were obtained by means of a confocal system and then processed in Matlab using the Image Processing Toolbox. The automatic measurements obtained with the proposed automatic method are compared with a manual tracking method using a plugin from ImageJ.

## 1 INTRODUCTION

The study of the red blood cells (RBCs) flowing in microvessels and microchannels is very important to provide a better understanding on the blood rheological properties and disorders in microvessels [1-5]. In this kind of study, the image analysis is an essential part to obtain crucial information about the blood rheology. However, most of the data analysis procedures have been executed manually [1-3] which is an extremely time consuming task especially with a large amount of data. Additionally, manual tracking methods can also introduce user errors into the data. Hence, it is important to develop image analysis methods able to get the data automatically. The main purpose of this work is to develop an approach able to track the RBCs with  $x$  and  $y$  coordinates automatically. To accomplish it we tested filtering, segmentation and feature extraction functions available in MatLab.

## 2 MATERIALS AND METHODS

### 2.1 Experimental Set-up

The confocal micro-PIV system used in this study consists of an inverted microscope (IX71; Olympus) combined with a confocal scanning unit (CSU22; Yokogawa), a diode-pumped solid-state (DPSS) laser (Laser Quantum) with an excitation wavelength

of 532 nm and a high-speed camera (Phantom v7.1; Vision Research) (Fig. 1). The glass capillary was placed on the stage of the inverted microscope and by using a syringe pump (KD Scientific) a pressure-driven flow was kept constant ( $Re \sim 0.008$ ). More detailed information about this system can be found elsewhere [1].

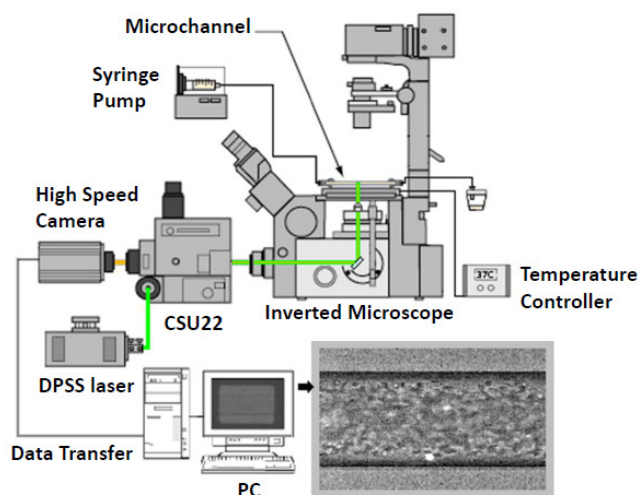


Figure 1. Experimental set-up.

### 2.2 Image Analysis

The laser beam was illuminated from below the microscope stage through a dry 40 $\times$  objective lens with a numerical aperture (NA) equal to 0.9. The confocal images were captured in middle of the capillary with a resolution of 640 $\times$ 480 pixel at a rate of 100 frames/s with an exposure time of 9.4 ms. Two

image analyses methods were used in this study: method 1 (manual approach) and method 2 (automatic approach).

#### Method 1

A manual tracking plugin (MTrackJ) [6] of an image analysis software (Image J, NIH) [7] was used to track individual RBC. By using MTrackJ plugin, the bright centroid of the selected RBC was automatically computed through successive images for an interval of time of 10 ms. After obtaining  $x$  and  $y$  positions, the data were exported for the determination of each individual RBC trajectory.

#### Method 2

All frames were loaded and pre-processed using Matlab [8]. The region of interest was then cropped from the images with the function *imcrop*. The median function, *medfilt2*, with one mask 5x5 pixel, was applied to eliminate most of the noise and to enhance the flowing object. In Fig. 2 we can see the result of these processing steps. In the next step, the images are subject to a segmentation filter, *Sobel*. With this segmentation it is possible to separate RBCs from the background, i.e. differentiate the area of interest (the RBCs) from the not-interest area (background image). This is possible using a *threshold* method, where a definition of one or more values of separation is enough to divide the image into one or more regions. The function *iterative threshold* was applied for the sequence of all the images.

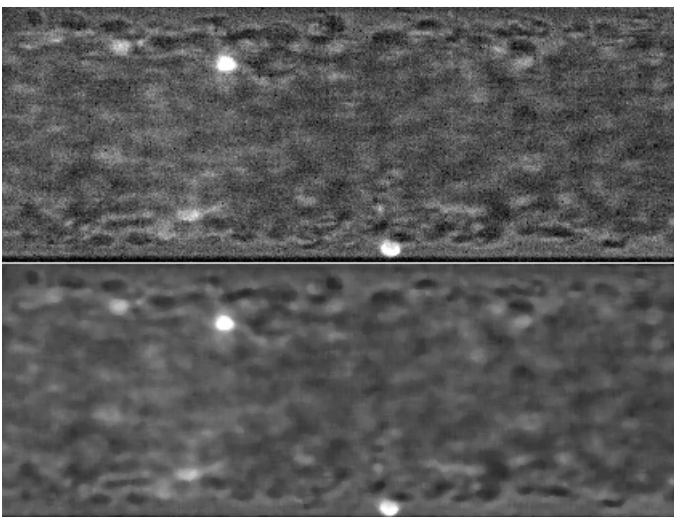


Figure 2. The region of interest (above) and the image filtered by using the median function *medfilt2*.

The objects are defined with the *Sobel* filter (see Fig. 3), which shows only the edge of the objects. The *Sobel* computes an approximation of the gradient of the image intensity. At each pixel point in the image, the result of the *Sobel* operator is either the corresponding gradient vector or the norm of this vector.



Figure 3. Result of the iterative *threshold* method and the filter *Sobel*.

### 3 RESULTS AND DISCUSSION

After the segmentation processing, the RBCs were tracked and sets of data ( $x$  and  $y$  positions) were obtained with the Matlab function (Fig. 4), stored in the image processing toolbox, *regionprops*. This function measures a set of properties (area, centroid, etc.) for each connected component (RBC) in the binary image.

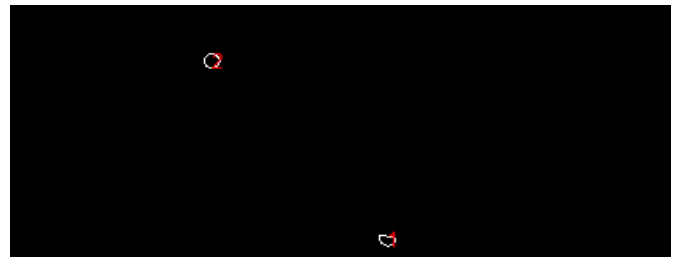


Figure 4. RBCs tracking and data extraction.

In the Fig.5 we can see the tracking of two RBCs, in a sequence of successive images, with an interval of 4 frames.

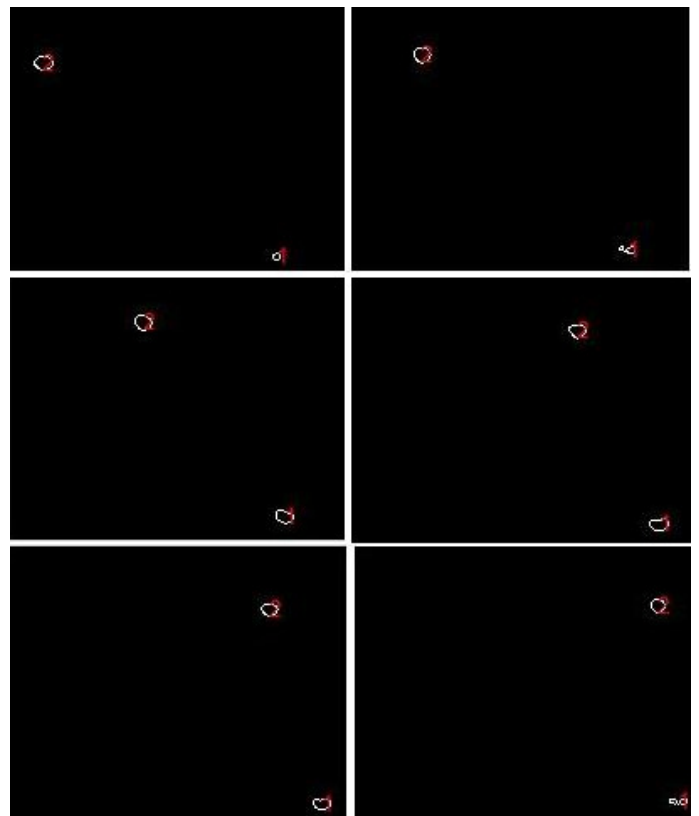


Figure 5. RBCs tracking and data extraction in a sequence of 4 to 4 frames.

All of these image processes, presented in this work, are placed in an application, *RBC Data Tracking*, built in MatLab, in which all the steps can be done automatically.

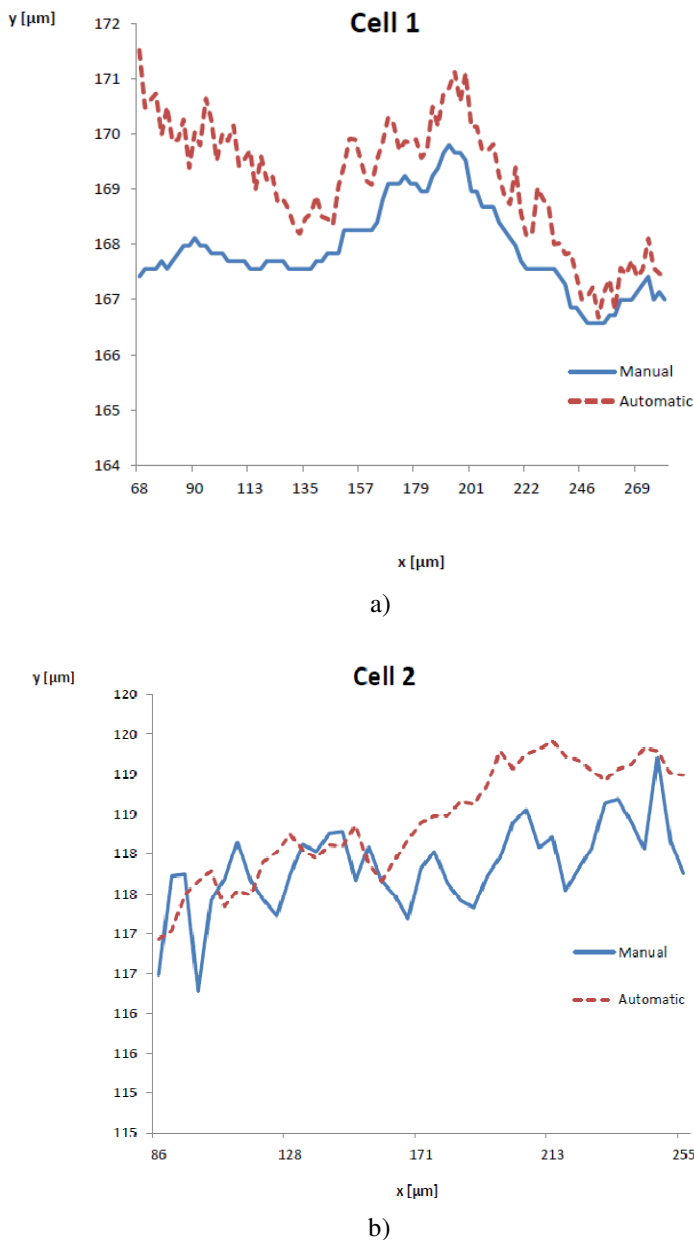


Figure 6. Comparison of the manual (a) and automatic (b) methods.

Fig. 6 shows a qualitative comparison between method 1 (manual) and method 2 (automatic). The trajectories obtained from the proposed automatic method looks more smooth when compared with manual method.

Some deviations are observed between both methods. This may be due to the inaccuracy in manual tracking, especially for determination of the center of the RBCs, because the automatic method is more sensitive, even in the presence of small changes in the centroid.

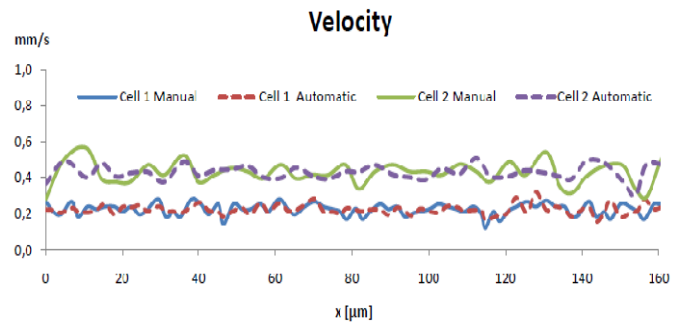


Figure 7. Velocity of two cells by using both methods.

Fig. 7 shows the velocity of cell 1 and cell 2 calculated by data obtained from both methods. The results show good agreement between the two methods.

## 4 CONCLUSIONS

Although the automatic method presented in this study is a promising way to track the flowing RBCs, additional image analysis needs to be performed. Hence, detailed quantitative measurements of the RBC trajectories are currently under way and will be presented in due time.

In future work we are planning to explore more techniques to obtain quantitative measurements of the RBC trajectories, and more image analysis strategies need to be performed.

## ACKNOWLEDGEMENTS

The authors acknowledge the financial support provided by: PTDC/SAU-BEB/108728/2008, PTDC/SAU-BEB/105650/2008 and PTDC/EME-MFE/099109/2008 from the FCT (Science and Technology Foundation) and COMPETE, Portugal.

## REFERENCES

- [1] Lima R, Ishikawa T, Imai Y, Takeda M, Wada S, and Yamaguchi T. Measurement of individual red blood cell motions under high hematocrit conditions using a confocal micro-PTV system. *Annals of Biomedical Engineering*. **37**, 1546-59, 2009.
- [2] Fujiwara H, Ishikawa T, Lima R, et al. Red blood cell motions in high-hematocrit blood flowing through a stenosed microchannel. *Journal of Biomechanics* **42**, 838-843, 2009.
- [3] Suzuki, Y., Tateishi, N., Soutani M. and N., Maeda, Deformation of erythrocytes in microvessels and glass capillaries: effects of erythrocyte deformability. *Microcirculation* **3**, 49-57, 1996.
- [4] Pries, A., Secomb, T., et al, Resistance to blood flow in microvessels in vivo. *Circulation Research* **75**, 904-915, 1994.
- [5] Pinho, D., et al., Red blood cells motion in a glass microchannel, Numerical Analysis and Applied Mathematics, Vol. 1281: 963-966, 2010.
- [6] Meijering E, Smal I and Danuser G, Tracking in molecular bioimaging, *IEEE Signal Process. Mag.* **23**: 46-53, 2006.
- [7] Abramoff M, Magelhaes P and Ram S, Image processing with image J, *Biophotonics Int.* **11**: 36-42, 2004.
- [8] Steven L. Eddins. Rafael C. Gonzalez, Richard E. Woods, Digital Image Processing Using Matlab, 2002.