



Pääkkönen, M., Bläuer, A., Olsen, B., Evershed, R. P., & Asplund, H. (2018). Contrasting patterns of prehistoric human diet and subsistence in northernmost Europe. *Scientific Reports*, 8, [1148].  
<https://doi.org/10.1038/s41598-018-19409-8>

Publisher's PDF, also known as Version of record

License (if available):  
CC BY

Link to published version (if available):  
[10.1038/s41598-018-19409-8](https://doi.org/10.1038/s41598-018-19409-8)

[Link to publication record in Explore Bristol Research](#)  
PDF-document

This is the final published version of the article (version of record). It first appeared online via Nature at <https://doi.org/10.1038/s41598-018-19409-8> . Please refer to any applicable terms of use of the publisher.

## **University of Bristol - Explore Bristol Research**

### **General rights**

This document is made available in accordance with publisher policies. Please cite only the published version using the reference above. Full terms of use are available:  
<http://www.bristol.ac.uk/pure/about/ebr-terms>

# SCIENTIFIC REPORTS



OPEN

## Contrasting patterns of prehistoric human diet and subsistence in northernmost Europe

Mirva Pääkkönen<sup>1</sup>, Auli Bläuer<sup>2</sup>, Bjørnar Olsen<sup>3</sup>, Richard P. Evershed<sup>4</sup> & Henrik Asplund<sup>1</sup>

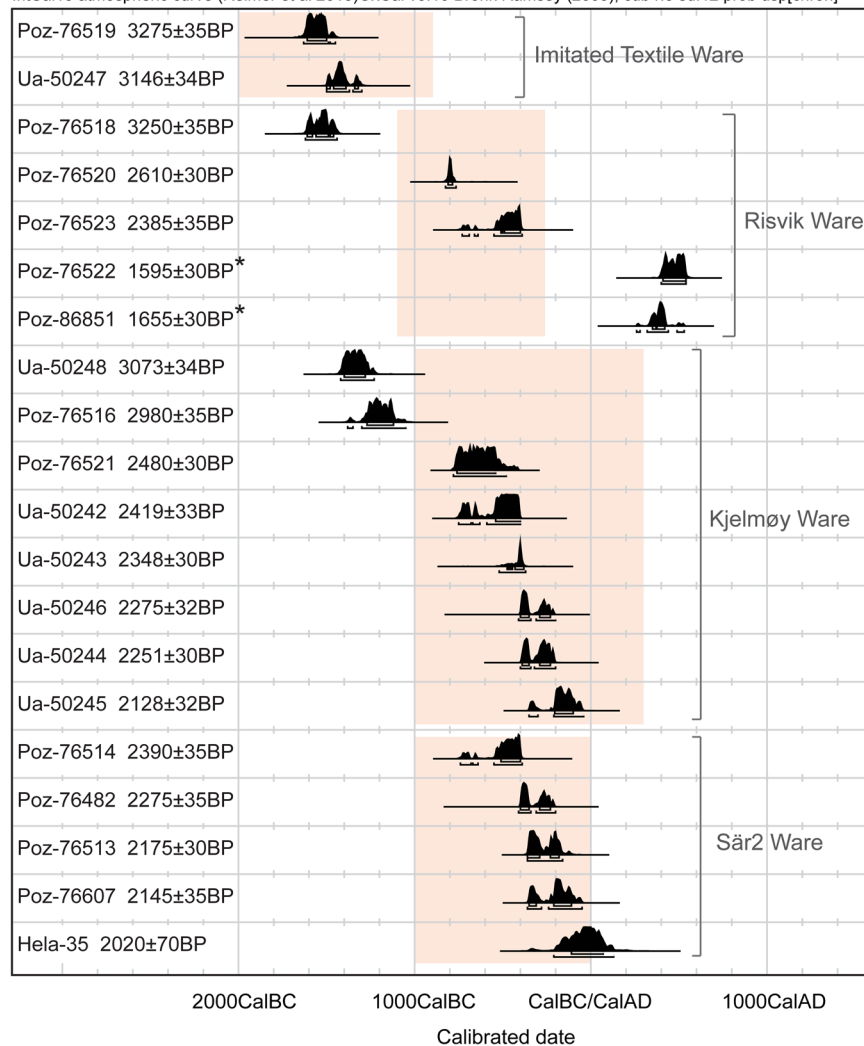
Current archaeological evidence indicates the transition from hunting-fishing-gathering to agriculture in Northern Europe was a gradual process. This transition was especially complex in the prehistoric North Fennoscandian landscape where the high latitude posed a challenge to both domestic animal breeding and cereal cultivation. The conditions varied, the coastal dwellers had access to rich marine resources and enjoyed a milder climate due to the Gulf Stream, while those living in the inland Boreal forest zone faced longer and colder winters and less diversity in animal and plant resources. Thus, the coastal area provided more favourable conditions for early agriculture compared to those found inland. Interestingly, a cultural differentiation between these areas is archaeologically visible from the late 2<sup>nd</sup> millennium BC onwards. This is most clearly seen in regionally distinct pottery styles, offering unique opportunities to probe diet and subsistence through the organic residues preserved in ceramic vessels. Herein, we integrate the lipid biomarker, compound-specific stable carbon isotopes ( $\delta^{13}\text{C}$ ), and zooarchaeological evidence to reveal culturally distinct human diets and subsistence patterns. In northern Norway, some of the coastal people adopted dairying as part of their subsistence strategy, while the inhabitants of the interior, in common with northern Finland, continued their hunter-gatherer-fisher lifestyles.

Summer days are long in Fennoscandia (Norway, Sweden, Finland, and Kola Peninsula), but north of the Arctic Circle the sun does not rise above the horizon during the winter months. Still, North Fennoscandia was populated soon after the last ice sheet retreated from the area around 10 000–9000 BC. During most of the Stone Age (10 000–1800 BC) a mobile hunter-gatherer lifestyle was dominated here<sup>1,2</sup>. However, by the end of this era, more sedentary settlement patterns developed in some coastal areas of the north<sup>3</sup>. During the Early Metal Period (1800–1 BC) the Fennoscandian cultural landscape differentiated. Communities along the western coast of North Norway and in the Gulf of Bothnia adopted elements of an agricultural way of life and increasingly oriented themselves toward South Scandinavian societies. The communities in the interior and north-eastern Fennoscandia continued their hunting and gathering lifestyle and became more involved with eastern and central Russian exchange network. This differentiation is reflected in the pottery styles from this period<sup>3,4</sup>. The tradition of using asbestos-tempered ceramics is widespread in North Fennoscandia and became especially common in the region around 2000 BC. At the end of the 2<sup>nd</sup> millennium BC, the asbestos pottery used in the area differentiated into two distinct styles, termed Risvik (1100–270 BC, main period 800–400 BC) and Kjelmøy pottery (1000 BC–300 AD, main period 900–100 BC, Fig. 1)<sup>3</sup>. Sites with Risvik pottery are located on the northwest parts of the Norwegian coast, whereas the Kjelmøy pottery sites are mainly distributed in the interior and northernmost coastal area of North Fennoscandia<sup>5,6</sup>.

Using only the sparse archaeological record, Risvik pottery appears connected with communities that integrated agriculture into their economies and exhibited increased cultural affiliations with the Nordic Bronze Age societies further south in Scandinavia. In contrast, Kjelmøy pottery is associated with communities who maintained a hunter-gatherer way of life<sup>3</sup>. In addition to Kjelmøy and Risvik, other Early Metal Period pottery types are found in North Fennoscandia. This includes ceramics that exhibit stylistic and chronological affinities with Kjelmøy pottery, such as mica and shell tempered pottery found in north-eastern Norway and the more

<sup>1</sup>Department of Archaeology, University of Turku, Turku, FI-20014, Finland. <sup>2</sup>Green Technology, Natural Resources Institute Finland, Turku, FI-20520, Finland. <sup>3</sup>Department of Archaeology, History, Religious Studies and Theology, UiT - The Arctic University of Norway, Tromsø, N-9037, Norway. <sup>4</sup>Organic Geochemistry Unit, School of Chemistry, University of Bristol, Bristol, BS8 1TS, United Kingdom. Correspondence and requests for materials should be addressed to M.P. (email: [mirva.paakkonen@utu.fi](mailto:mirva.paakkonen@utu.fi))

IntCal13 atmospheric curve (Reimer et al 2013)OxCal v3.10 Bronk Ramsey (2005); cub r:5 sd:12 prob usp[chron]

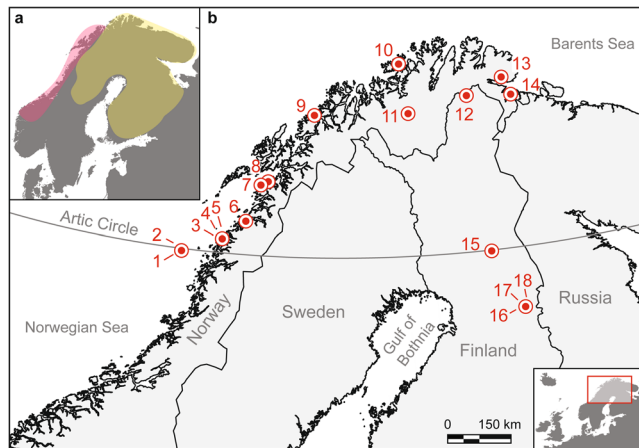


**Figure 1.** AMS dates from the crusts on the vessels. The AMS dates from crusts of the studied vessels show that all of the vessels dated to the expected periods, with the exception of one of the Risvik vessels (SÄR73), which was younger than expected, dating to 400–540 cal AD (with a 95.4% probability). Because of this exceptional date, the sample was re-dated as a duplicate, but the result did not change considerably (260–280 cal AD (1.9%), 320–440 cal AD (87.8%), and 490–530 cal AD (5.7%)). All dates are from this study except for Hela-35<sup>10</sup>. The calibration used the OxCal v3.10 program<sup>46,47</sup> and the IntCal13 calibration data<sup>48</sup>. \* = Two different datings for vessel SÄR73. Rectangles indicate typical dating range for each ceramic type.

heterogeneous Säräisniemi 2 (Sär 2, 1000–1 BC) pottery used by the hunter-gatherers in North Finland<sup>4</sup>. Also for the latter group, other means of tempering than asbestos have been identified. Imitated Textile (IT, 2000–900 BC) pottery represents an earlier tradition of asbestos ceramics (Fig. 1). The latter occurs widely in most parts of North Fennoscandia and has been connected with a previous more uniform hunter-gatherer lifestyle<sup>7–10</sup>.

The subsistence patterns of groups living in the North Fennoscandia during the Early Metal Period can be explored through studying ceramics vessels, and more precisely, as done here, by studying organic residues found from Arctic Norway and North Finland. Previous studies have shown that lipids survive widely absorbed in the ceramic matrix of archaeological vessels from South Fennoscandia with a range of biomarkers offering unique opportunities to probe spatial and temporal changes in vessel use and, by extension, examine the different food procurement strategies. In particular, preserved fatty acids have been used to determine the use of pottery for the processing of animal products, while  $\delta^{13}\text{C}$  values of palmitic acid ( $\text{C}_{16:0}$ ) and stearic acid ( $\text{C}_{18:0}$ ) homologues are used to identify the source of fats, specifically, ruminant adipose, non-ruminant adipose, and dairy fats<sup>11</sup>. Further, specific biomarkers originating from aquatic organisms can be used to detect lipid residues of marine and freshwater organisms, notably:  $\omega$ -(*o*-alkylphenyl)alkanoic acids (APAAs), isoprenoid fatty acids (IFAs), phytanic acid, pristanic acid, 4,8,12-trimethyltetradecanoic acid (4,8,12-TMTD), and dihydroxy fatty acids (DHYAs)<sup>12–18</sup>.

The current model suggests that while all the societies of the Early Metal period produced pottery, those along the climatically milder western coast of North Norway became orientated more toward agriculture and adopted dairying and cereal cultivation as part of their subsistence. At the same time, the communities of interior



**Figure 2.** Panels showing the geographical distribution of the asbestos tempered pottery and the studied sites. **(a)** Red indicates the distribution of agrarian Risvik pottery and yellow the distribution of Sär 2 and asbestos tempered hunter-gatherer pottery in Fennoscandia. **(b)** Map of the study area showing the locations of the target sites in Arctic Norway and North Finland. 1 = Træna Kirkhellaren (R), 2 = Træna Rønesvalen (R), 3 = Meløy Nedre Valla (R), 4 = Meløy Solheim Mesøy (R), 5 = Meløy Texmoen (R), 6 = Bodø Skålbunes (R), 7 = Steigen Bo (R), 8 = Hamarøy Uteid (R), 9 = Tromsø Sandvika (R), 10 = Sørøysund Sandbukt Sørøy (IT), 11 = Kautokeino Virdejávri 106 (K), 12 = Utsjoki Guatniljärvi (S2), 13 = Nesseby Mortensnes (K), 14 = Sørvaranger Mestersanden (K, Msh), 15 = Kemijärvi Neitilä 4 (S2), 16 = Suomussalmi Kalmosärkkä N (S2), 17 = Suomussalmi Kalmosärkkä S (S2), 18 = Suomussalmi Kellolaisten Tuli (S2), where IT = Imitated Textile Ware, K = Kjelmøy pottery, Msh = mica and shell tempered ware, S2 = Sär2 Ware, and R = Risvik pottery. The sherd from Tromsø Sandvika only resembled Risvik pottery. Map created using MapInfo Professional 12.0.3 ([www.pitneybowes.com](http://www.pitneybowes.com)) and Adobe Illustrator CS6 ([www.adobe.com](http://www.adobe.com)).

and north-eastern areas continued their hunter-gatherer-fisher way of life<sup>3</sup>. Herein, we test the aforementioned culturally-specific model for diet and subsistence through the lens of absorbed organic residues found in pottery. The distinct and differing pottery styles offer unique opportunities to probe subsistence patterns through examination of the organic residues preserved in the vessels. Building on previous research based on archaeological and zooarchaeological records, we seek to develop new understandings of food procurement strategies in Europe's far north during a time of major economic change. Thus, in addition to studying organic residues, we compare these findings with the results obtained from zooarchaeological analyses in order to have better understanding of subsistence patterns of coastal early agrarian communities, coastal hunter-gatherers, and interior hunter-gatherers. To achieve this goal, we assembled a substantial collection of pottery comprising Risvik (putative agrarian), Kjelmøy, mica and shell tempered ware, IT, and Sär 2 (hunter-gatherer) pottery types derived from both inland and coastal settlements.

## Results

Fifty eight potsherds from archaeological sites in North Finland and Arctic Norway (Fig. 2) were selected for analysis. All the studied sites were located near water bodies, either at the ocean coast or along interior lakes and rivers. The studied vessels were all low temperature-fired wares tempered by either asbestos, mica, talc, soapstone, or shell. Lipid extracts were analysed using gas chromatography (GC). The lipid extracts of 46 vessels were studied further using gas chromatography-mass spectrometry (GC-MS), and GC-combustion-isotope ratio MS (GC-C-IRMS), including those from: 10 Risvik pottery sherds and a wide range of sherds from hunter-gatherer sites, namely, 15 from Kjelmøy sherds, 6 sherds tempered with mica and shell, 3 sherds from IT pottery, and 12 Sär 2 pottery sherds (Table 1, Supplementary Table S1).

**Norwegian coastal areas.** Of the nine Risvik sites investigated, sherds from five sites yielded organic residues that were likely to derive from dairy fats. Of these, lipid residues from three vessels, based on their  $\Delta^{13}\text{C}$  ( $\delta^{13}\text{C}_{18:0} - \delta^{13}\text{C}_{16:0}$ ) proxy, are dominated by dairy fats. Ancient fat residues from three other vessels exhibited APAAs, DHYAs, and in one case, phytanic acid (Supplementary Table S1). Nonetheless, the  $\Delta^{13}\text{C}$  values of these residues indicate a predominantly dairy fat component (Fig. 3); thus, these residues are likely to have resulted from the use of these vessels to process both marine and dairy products. In four sherds, the  $\delta^{13}\text{C}$  values, detection of APAAs, DHYAs (Fig. 4) and isoprenoid fatty acids indicate the vessels were used to process predominantly marine products. The high frequency of marine product biomarkers in the pottery fits the interpretation<sup>19</sup> that animal husbandry played a minor role in fulfilling the nutritional demands of the people using Risvik pottery, with their economy otherwise based mostly on hunting and gathering.

Kjelmøy, IT, and mica and shell tempered pottery sherds from these northern coastal hunter-gatherer sites yielded residues that contained  $\text{C}_{16} - \text{C}_{22}$  APAAs, long-chain DHYAs, and IFAs (Supplementary Table S1), thereby indicating a substantial marine contribution to the typical diet. Nevertheless, these people did not solely exploit

Pottery type	Coastal agricultural groups	Coastal hunter-gatherer groups			Interior hunter-gatherer groups	
	Risvik Pottery	Kjelmøy Pottery	Mica and shell tempered Ware	Imitated Textile Ware	Kjelmøy Pottery	Sär 2 Ware from inland Finland
Aquatic fats	2	5	5	2		
Aquatic? fats	2					
Aquatic fats, Ruminant carcass fats?				1		1
Aquatic fats?, Other terrestrial fats?		2				2
Dairy fats	3					
Dairy fats, Aquatic fats?	3					
Ruminant carcass fats		1			5	4
Other terrestrial fats?		2	1			2
Other terrestrial fats?, Ruminant carcass fats?						3

**Table 1.** Summary of organic residue analysis of studied pottery based on lipid biomarkers and  $\delta^{13}\text{C}$  values. The values represent number of vessels with identified fatty acid content. ? = uncertain identification. More detailed information is presented in Supplementary Table S1.

the marine environment for food, with seven of the lipid residues shown as originating from ruminant animals and/or possibly other terrestrial animals (Table 1).

**Interior Norway and Finland.** None of the studied vessels from the inland sites contained DHYAs with chain-lengths of  $\text{C}_{20}$ – $\text{C}_{22}$ ; even though APAAs and IFAs were detectable in the residues. The carbon isotope values and specific biomarker compositions of three sherds suggest the processing of both terrestrial and aquatic products (Supplementary Table S1). The results obtained from the organic residue analyses of the other vessels from the inland sites were very consistent. Ruminant animal fats, most likely originating from reindeer, dominated the pottery from Virdejävri 106, while the Sär 2 vessels contained lipid residues of other terrestrial animals and fish, together with ruminant fat residues (Table 1, Supplementary Table S1).

## Discussion

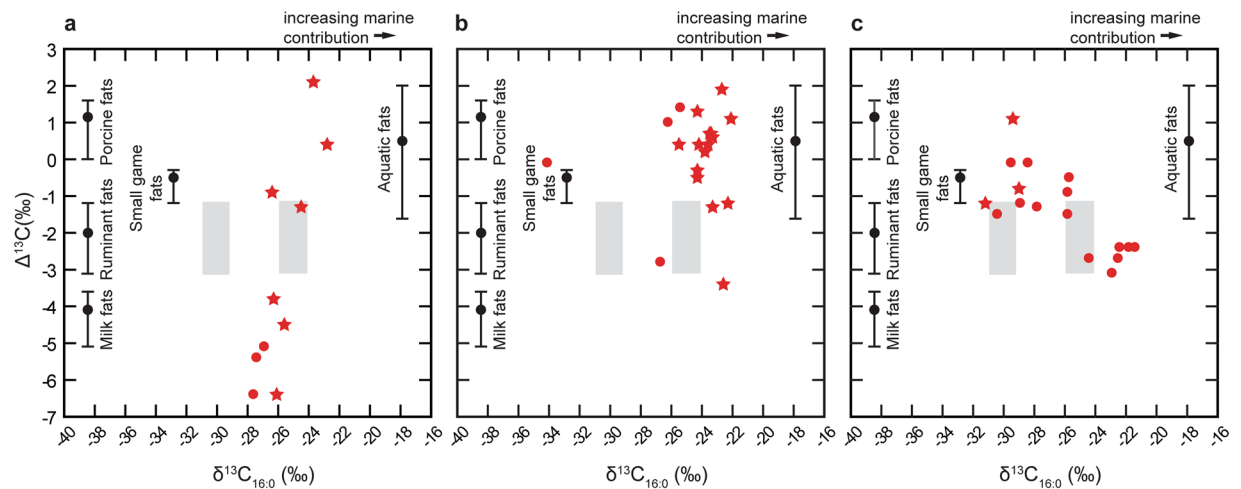
One of our goals was to interpret animal subsistence based on the lipid residues found in the pottery in tandem with zooarchaeological evidence. However, in some areas of Fennoscandia, especially at Finnish prehistoric sites, the preservation of animal bone is often very poor with only small burnt fragments recovered. Further, due to the high fragmentation rates and the low number of identified bone fragments per site, the assemblages are often relatively uninformative, although seen as broadly reflecting regional economies<sup>20–22</sup>. Assemblages were comprised of burnt bone fragments from wild mammals, birds, and fish. The species represented were typical of those expected for fauna of Boreal zones inland hunter-gatherer communities<sup>20,22</sup>.

Bone preservation at coastal sites in North Norway is generally better than in Finland, and many sites contain large unburned assemblages<sup>23,24</sup>. Identified species from the coastal Early Metal Period bone assemblages include fish and marine mammals; however, terrestrial species are also widely represented. The general assessment indicates that hunting and fishing predominated; however, fragments of teeth and bones of cattle (*Bos taurus*) and sheep or goats (*Ovis aries/Capra hircus*) have been recovered from the Risvik pottery settlements and other Early Metal Period coastal settlements in North Norway<sup>25–27</sup>. In addition, well-dated traces of cereal cultivation (pollen and grains) have also been identified at coastal sites from this period<sup>28</sup>. Zooarchaeological assemblages from the coastal early agrarian sites (Table 2), are in agreement with the results obtained from organic residue analysis.

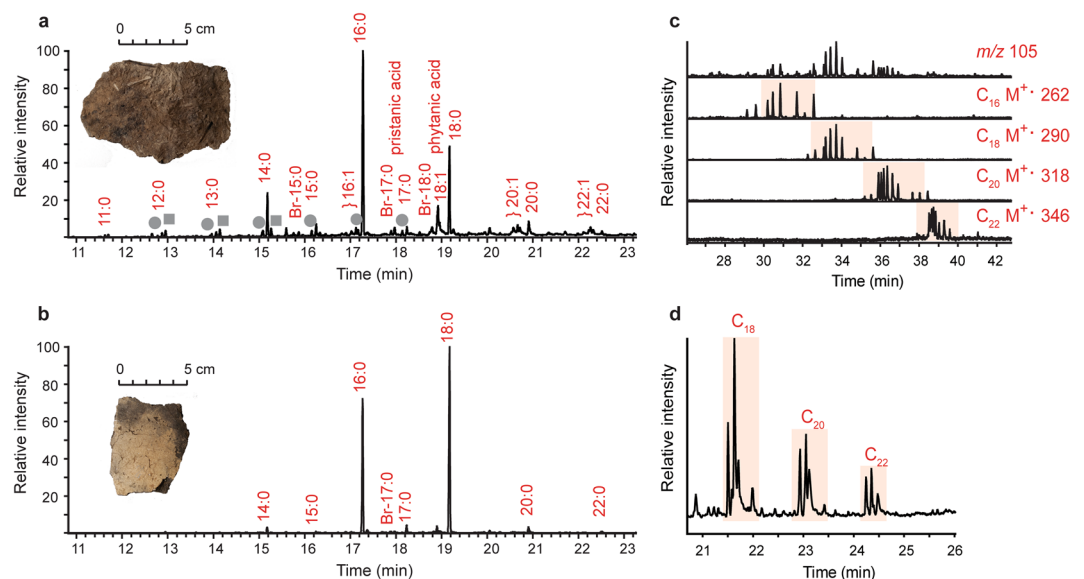
The dairy fat residues and bones of domesticated ruminants recovered from the Kirkhellaren site are particularly interesting, since the site is located on a remote island more than 40 km from the coast. This discovery of dairy fats provides clear evidence of agrarian groups having populated even the most challenging environments. Surprisingly, no indication of terrestrial carcass fats was observed in the lipid residues recovered from the pottery of the coastal early agrarian settlements, even though terrestrial animal remains were present in the zooarchaeological assemblages. The lack of terrestrial carcass fats could result from sampling bias or indicate specialised food preparation practises, wherein terrestrial carcass products were not prepared in ceramic vessels, instead were smoked, dried, or processed in containers other than ceramic vessels. The major conclusion, however, is that the early farmers of the coastal zone used ceramic vessels mainly for processing marine and dairy products.

Although reindeer (*Rangifer tarandus*) herding is a characteristic of the economy of the North Fennoscandian people today, it is a relatively recently introduced phenomenon, dating back only to the historical period<sup>3,29</sup>. In prehistoric times, small numbers of tame reindeer could have been used as decoy animals for reindeer hunting and perhaps even for transportation and milking<sup>30,31</sup>. Thus, residues of dairy fats detected in the pottery could hypothetically have derived from the reindeer, rather than from cattle, sheep, or goats. However, the fact that dairy fats were detected in the Risvik rather than in the Kjelmøy pottery makes this interpretation unlikely, since reindeer were far more important to the people using the latter type of pottery.

In North Norway coastal hunter-gatherer groups lived north of the early agrarian societies. The bone assemblages from their sites comprise a wide range of species, mostly marine mammals and, fish, including seals



**Figure 3.** Panels showing the  $\Delta^{13}\text{C}$  ( $\delta^{13}\text{C}_{18:0} - \delta^{13}\text{C}_{16:0}$ ) proxy for the different studied economic groups. (a) Coastal agrarian groups using dairy and marine products, (b) coastal hunter-gatherers, with a diet based on marine mammals and fish, and (c) interior hunter-gatherers with a diverse food procurement pattern consisting of terrestrial animals and fresh water fish. The organic residues from vessel plotting to the RHS contained a greater marine component compared to those plotting more to the LHS. The stars represent lipid residues that contained biomarkers of marine/aquatic origin, and the circles represent the fats that originated from terrestrial resources. The grey rectangles indicate the range of  $\delta^{13}\text{C}_{16:0}$  values of modern Eurasian elk fats (on the left) and reindeer/wild forest reindeer fats (on the right)<sup>49</sup>.



**Figure 4.** Partial gas chromatogram of fat residues extracted from Kjelmo potsherds. (a) Sherd SÄR10B from a coastal site and (b) SÄR14 from interior Norway. Grey circles indicate alkanes, squares indicate  $\alpha,\omega$ -dicarboxylic acids, and Br indicates branched chain fatty acid. (c) A partial selected ion monitoring (SIM) chromatogram of SÄR10B shows the base peak  $m/z$  105 of the APAAs and the distribution of APAAs with chain lengths  $\text{C}_{16}$ – $\text{C}_{22}$ , and (d) the partial SIM chromatogram of SÄR10B shows the distribution of DHYAs.  $\text{C}_{18}$ ,  $\text{C}_{20}$ , and  $\text{C}_{22}$  indicate the chain lengths of the DHYAs. The findings of APAAs and DHYAs strongly indicate the processing of marine commodities in vessel SÄR10B.

(*Phocidae*) whales (*Cetacea*), saithe (*Pollachius virens*), and cod (*Gadus morhua*). However, terrestrial species are also represented (Table 2), for example reindeer and European beaver (*Castor fiber*). A total of 28 different species of birds have also been identified (Supplementary Table S2). The presence of terrestrial fats in coastal hunter-gatherer sherds indicates a versatile use of resources largely in-line with the zooarchaeological findings and indicate that the coastal hunter-gatherers based their diet on both marine and terrestrial resources.

The zooarchaeological assemblages from the interior hunter-gatherer sites comprised also terrestrial animals (Table 3), including: European beaver, Eurasian elk (*Alces alces*), and reindeer. Fish are also present, including

	Risvik Pottery		Kjelmøy Pottery	
	Tromsø Sandvika	Træna Kirkhellaren	Sorvaranger Mestersanden	Mortensnes Nesseby
Domesticated animals	2	present	0	0
Wild ruminant animals	0	present	61#	16
Wild non-ruminant animals	0	present	44	3
Marine mammals	1	present	238#	140
Birds	0	present	872	8
Fish	present	present	524	16

**Table 2.** Identified bone fragments from the sites included in this study from Norway (Number of Identified Specimens, NISP): Sandvika<sup>37</sup>, Kirkhellaren<sup>38</sup>, Mestersanden<sup>24</sup>, Mortensnes shows bone material only from those parts of the sites that date back to the Late Stone Age/Early Metal Period<sup>39</sup>. Number with # = NISP was greater than that given here, but exact numbers are not given. No zooarchaeological data were available from the other studied Norwegian sites. More detailed information is presented in Supplementary Table S2.

	Suomussalmi Kalmosärkkä S	Suomussalmi Kalmosärkkä N	Suomussalmi Kelloisten Tuli	Kemijärvi Neitilä 4
Domesticated animals	0	0	0	0
Wild ruminant animals	2	14	47	26
Wild non-ruminant animals	8	59	66	189
Marine mammals	0	0	0	0
Birds	0	3	3	1
Fish	21	119	72	84

**Table 3.** Identified bone fragments from the sites included in this study from Finnish SÄR2 sites (Number of identified specimens NISP): Kalmosärkkä (KM 14504, KM 14289, KM 14830<sup>40,41</sup>), Kelloisten Tuli (KM 14246, 14505, 14831<sup>42</sup>, Neitilä 4 (KM 15671, 16145, 16553<sup>43–45</sup>). More detailed information is presented in Supplementary Table S3.

pike (*Esox lucius*) and those of the carp family (Cyprinidae, Supplementary Table S3). Bones of the European beaver were recovered in large quantities from these sites, suggesting they were hunted for food and not just for castoreum or for fur. Based on the dominance of terrestrial fauna in the zooarchaeological assemblages, it is presumed that the pottery from the interior of Fennoscandia would have been used to process terrestrial animal products, rather than products derived from freshwater aquatic organisms.

The composition of the zooarchaeological assemblages and the results of the organic residue analyses of the pottery from interior sites were in accordance with each other with the fat residues indicating cooking/storing of ruminant products, together with that of other terrestrial animals and minor contributions from freshwater resources. The extensive use of bifacial arrow points in the interior during the Early Metal period is considered a potential indicator of intensified reindeer hunting<sup>32</sup>. This result agrees with the finding of ruminant carcass fat residues in vessels from sites located inland, such as Virdejävri 106 (Supplementary Table S1).

The Norwegian coast is ice-free during winter and is generally considered to be a more productive area for both marine and terrestrial resources than the North Fennoscandian interior<sup>33</sup>. The compositional differences in the lipid residues in pottery between the coastal and the interior hunter-gatherer sites reflects the different environmental productivities of the regions. The more challenging environment of the interior probably required a more differentiated subsistence economy, i.e., groups in the interior had to use most of available resources. In the more hospitable and economically productive environment of the Norwegian coastal zone, food procurement strategies clearly became more specialised. Short-term or seasonal sites in the interior appear to display less diversity in their food-ways compared to the more permanent settlement sites<sup>34</sup>. This is seen, for example, in the dominance of ruminant fats in the pottery from Virdejävri 106, where lack of diversity in fat residues is likely due to the seasonal occupation of the site rather than a specialised diet of the people.

Based on the findings of domesticated animal bones and cereals, and our results from the analysis of lipid residues in pottery, the coastal groups using Risvik pottery were clearly gradually transitioning towards farming. Among these groups, hunting, fishing and farming were practised simultaneously. In contrast, for the communities living further north in the coastal zone and in the interior, agriculture and animal husbandry remained for a long time an available, yet unrealized, option. Living in environments with less favourable farming conditions these groups chose to continue the economically less-risky hunting and gathering.

Overall, these new results show that the North Fennoscandian economic landscape of the last millennium BC can be divided into three new and distinct categories: (i) coastal agrarian communities who based their food economy on dairy and marine products; (ii) coastal hunter-gatherers with an emphasis on marine mammals and fish; and (iii) interior hunter-gatherers with more a diverse food procurement pattern that consisted of terrestrial animals and freshwater fish.

With regard to explaining the transition to farming among coastal groups in North Norway, it seems evident that economic factors alone do not suffice. Especially since marine resources were abundant and all coastal groups could have based their economies on fishing and marine mammal hunting. Nevertheless, in some areas potential drivers toward animal husbandry may have included economic and nutritional gains, thereby encouraging hunter-gatherer groups to move toward a dairy-oriented economy. It has also been suggested that animal domestication could have been introduced simply to increase the quantity of meat in the diet<sup>35</sup>. Based on the analysed lipid residues found, this seems unlikely, as only aquatic and dairy fats were observed in the studied coastal early agrarian potsherds. However, as stated earlier, the ruminant carcass elements could have been processed in different types of vessels than pottery.

Fishing continued to be important to coastal farming sites in North Norway up to modern times. Due to the richness of natural coastal resources, any possible failure in cultivation and animal husbandry would not have led to a nutritional crisis. Based on this understanding, the rich natural resources of coastal North Norway may be seen as enabling some communities to experiment with and adopt the economically riskier food procurement strategies of cereal cultivation and animal husbandry. This dynamic in food procurement practises can also be seen as related to the ongoing processes of cultural differentiation, wherein the adoption of farming also implied a cultural and social orientation towards South Scandinavian farming societies – and simultaneously a wish to distinguish themselves from the former foraging peers in the north. In other words, the groups that were using Risvik pottery could have adopted farming or at least dairying also as a mean to strengthen their economic and social relationships with other agrarian groups<sup>19</sup>.

Thus, the potential cultural gains of farming should not be underestimated, especially as a means of expressing cultural affiliation and difference. The increased interaction with the southern and more hierarchical farming communities may have made this kind of “mimicking” advantageous and perhaps even imperative in order to enhance the contacts. Thus, animal husbandry would have been a common mediator occurring between Arctic early agrarian groups and South Scandinavian Nordic Bronze Age communities<sup>19</sup>. Neither should one forget the possible significance of farming products for luxury consumption in social and ritual gatherings.

In summary, based on the lipid biomarkers preserved in ancient lipid residues in ceramic food processing vessels, coastal and interior hunter-gatherer groups in North Fennoscandia chose divergent food procurement strategies due to both differing environmental factors and contrasting socio-cultural needs. The new organic residue evidence thus provides novel insights into the divergent food habits of prehistoric societies in the region. We have shown for the first-time that dairying was practiced in Arctic Norway by the early agrarian groups. However, animal domestication was only part of the economic base, as marine resources continued to play a critical role in the food procurement cycle. Even though some of the coastal groups had already included dairy fats into their diet, the food procurement patterns were quite similar in the coastal area. Thus, the richness of natural resources also may actually have delayed the transition to a fully agrarian community in northern areas.

## Methods

**Lipid analysis.** Sub-samples of surface-cleaned sherds (1–2 g) were extracted using direct methanolic acid extraction<sup>36</sup>. After the extraction, an aliquot was treated with *N,O*-bis(trimethylsilyl)trifluoroacetamide (20 µl) in readiness for high-temperature GC (HTGC) and GC-MS and GC-C-IRMS analyses.

**High temperature gas chromatography (HTGC).** HTGC analyses were performed using Agilent Technologies 7890 A GC. Diluted samples were introduced via on-column injection. The column was DB-1ht (15 m × 0.32 mm i.d., coated with dimethylpolysiloxane, film thickness, 0.10 µm, Agilent Technologies). The oven temperature was held isothermally for 2 min at 50 °C and then increased to 350 °C at 10 °C/min, followed by an isothermal hold at 350 °C for 10 min. The flame ionization detector (FID) was set to a temperature of 350 °C. Helium was used as a carrier gas and maintained at constant flow of 4.6 ml/min. The peaks were identified by their retention times, and quantification was achieved by referencing the internal standard method.

**Gas chromatography-mass spectrometry (GC/MS).** The GC/MS analyses of fatty acid methyl esters (FAMES) were performed using a Finnigan Trace MS quadrupole mass spectrometer, coupled to a Trace GC. Diluted samples were introduced using a PTV injector in splitless mode onto a HP-1 (50 m × 0.32 mm i.d. fused-silica capillary column coated with dimethylpolysiloxane, film thickness, 0.17 µm, Agilent Technologies). The GC oven temperature was programmed as follows: 50 °C for 2 min, then to 300 °C at 10 °C/min, and a hold at 300 °C for 10 min. Helium was used as the carrier gas and maintained at constant flow 5 ml/min. The MS was operated in electron ionization (EI) mode (70 eV) with a GC/MS interface temperature of 250 °C and a source temperature of 200 °C. The emission current was 50 µA, and the MS was set to acquire in the range of *m/z* 50–650 at two scans per second. Peaks were identified on the basis of their mass spectra using Thermo Xcalibur 3.0.63 software.

The structural identification of APAAs was carried out with polar GC/MS (VF-23ms, 60 m × 0.32 mm i.d. fused-silica capillary column coated with cyanopropyl film thickness, 0.15 µm, Agilent Technologies). The initial oven temperature was 50 °C with an evaporation phase of 1 min, followed by a transfer phase from 50 °C to 250 °C at 10 °C/min, then by an isothermal hold at 250 °C for 10 min. The MS was operated in EI mode (70 eV) with a GC/MS transfer line temperature of 250 °C and a source temperature of 200 °C. Specific ions for APAAs were detected using selected ion monitoring (GC/MS-SIM, scanning for the ions *m/z* 105, 262, 290, 318, and 346). Identification of DHYAs was carried out by GC/MS (HP-1, 50 m × 0.32 mm i.d. fused-silica capillary column, coated with dimethylpolysiloxane, film thickness, 0.17 µm, Agilent technologies and RTX-1, 50 m × 0.32 mm i.d. fused-silica capillary column coated with dimethylpolysiloxane, film thickness, 0.17 µm, Restek). The MS was operated in EI mode (70 eV) with a GC/MS transfer line temperature of 300 °C and a source temperature of 300 °C. The initial port temperature was 50 °C for 1 min followed by a temperature programme from 50 °C to 300 °C at 10 °C/min, followed by an isothermal hold at 300 °C for 10 min. Specific ions for DHYAs were detected using SIM mode (scanning for ions *m/z* 159, 187, 215, 243, 259, 287, 315, 443, 471, 499).



**Gas-chromatography-combustion-isotope ratio mass spectrometry (GC-C-IRMS).** The carbon isotope compositions of the C<sub>16:0</sub> and C<sub>18:0</sub> fatty acids were determined by using gas chromatography-combustion-isotope ratio mass spectrometry (GC-C-IRMS) and an Agilent Technologies 7890 A GC coupled to an IsoPrime 100 (70 eV, three faraday cup collectors *m/z* 44, 45, and 46) via an IsoPrime GC5 combustion interface with a CuO and silver wool reactor maintained at 850 °C. Diluted samples were introduced using a PTV injector in the splitless mode onto a HP-1 (50 m × 0.32 mm i.d. fused-silica capillary column coated with dimethylpolysiloxane, film thickness, 0.17 μm, Agilent Technologies). The GC oven temperature was programmed from 40 °C, following an isothermal hold for 1 min, to 300 °C at 10 °C/min, followed by an isothermal hold at 300 °C for 10 min. Each sample was run in duplicate.

**Data availability.** The data that support the findings of this study are available from the corresponding author upon request.

## References

- Halinen, P. Kivikausi in *Muinaisuutemme Jäljet. Suomen Esi- ja Varhaishistoria Kivikaudelta Keskiajalle* (eds Haggren, G., Halinen, P., Lavento, M., Raninen, S. & Wessman, A.) 19–121 (Gaudeamus, 2015).
- Halinen, P. *Prehistoric Hunters of Northernmost Lapland. Settlement Patterns and Subsistence Strategies. Iskos 14* (The Finnish Antiquarian Society, 2005).
- Hansen, L. I. & Olsen, B. *Hunters in Transition. An Outline of Early Sámi History* (Brill, 2014).
- Lavento, M. Pronssi- ja varhaismetallikausi in *Muinaisuutemme Jäljet. Suomen Esi- ja Varhaishistoria Kivikaudelta Keskiajalle* (eds Haggren, G., Halinen, P., Lavento, M., Raninen, S. & Wessman, A.) 125–197 (Gaudeamus, 2015).
- Jørgensen, R. & Olsen, B. *Asbestkeramiske Grupper i Nord-Norge: 2100 f.Kr.–100 e.Kr.* (University of Tromsø, 1988).
- Andrassen, D. M. *Risvikkeramik. En Analyse av Teknologisk Stil på Nordkalotten i Sein Steinbrukende Tid* (University of Tromsø, 2002).
- Gjessing, G. *Yngre Steinialder i Nord-Norge* (H. Aschehoug & Co., 1942).
- Carpelan, C. Ns. imitoitua tekstiilikeraamikkua Suomesta. *Suomen Museo 77*, 23–34 (1970).
- Jørgensen, R. & Olsen, B. Asbestkeramik i Nord Norge. *Finskt Museum 94*, 5–39 (1987).
- Lavento, M. *Textile Ceramics in Finland and on the Karelian Isthmus. Nine Variations and Fugue on a Theme of C. F. Meinander* (University of Helsinki, 2001).
- Copley, M. S. *et al.* Direct chemical evidence for widespread dairying in prehistoric Britain. *Proc. Natl. Acad. Sci. USA 100*, 1524–1529 (2003).
- Avigan, J. Pristanic acid (2,6,10,14-tetramethylpentadecanoic acid) and phytanic acid (3,7,11,15-tetramethylhexadecanoic acid) content of human and animal tissues. *Biochimica et Biophysica Acta (BBA)-Lipids and Lipid Metabolism 125*, 607–610 (1966).
- Ackman, R. G. & Hooper, S. N. Examination of isoprenoid fatty acids as distinguishing characteristics of specific marine oils with particular reference to whale oils. *Comp. Biochem. Physiol. 24*, 549–565 (1968).
- Hansel, F. A., Copley, M. S., Madureira, L. A. S. & Evershed, R. P. Thermally produced ω-(*o*-alkylphenyl)alkanoic acids provide evidence for the processing of marine products in archaeological pottery vessels. *Tetrahedron Lett. 45*, 2999–3002 (2004).
- Evershed, R. P., Copley, M. S., Dickson, L. & Hansel, F. A. Experimental evidence for the processing of marine animal products and other commodities containing polyunsaturated fatty acids in pottery vessels. *Archaeometry 50*, 101–113 (2008).
- Hansel, F. A. & Evershed, R. P. Formation of dihydroxy acids from *Z*-monounsaturated alkenoic acids and their use as biomarkers for the processing of marine commodities in archaeological pottery vessels. *Tetrahedron Lett. 50*, 5562–5564 (2009).
- Hansel, F. A., Bull, I. D. & Evershed, R. P. Gas chromatographic mass spectrometric detection of dihydroxy fatty acids preserved in the 'bound' phase of organic residues of archaeological pottery vessels. *Rapid Communications in Mass Spectrometry 25*, 1893–1898 (2011).
- Cramp, L. & Evershed, R. P. Reconstructing aquatic resource exploitation in human prehistory using lipid biomarkers and stable isotopes in *Treatise on Geochemistry* (eds Holland, H. & Turekian, K.) 319–339 (Elsevier, 2014).
- Olsen, B. Interaction between hunter-gatherers and farmers: Ethnographical and archaeological perspectives. *Archeologia Polska XXXIII*, 425–434 (1988).
- Ukkonen, P. *Shaped by the Ice Age. Reconstructing the History of Mammals in Finland during the Late Pleistocene and Early Holocene* (University of Helsinki, 2001).
- Tourunen, A. Burnt, fragmented and mixed: Identification and interpretation of domestic animal bones in Finnish burnt bone assemblages. *Fennoscandia Archaeologica XXVIII*, 57–69 (2011).
- Bläuer, A. & Kantanen, J. Transition from hunting to animal husbandry in Southern, Western and Eastern Finland: New dated osteological evidence. *J. Archaeol. Sci. 40*, 1646–1666 (2013).
- Olsen, H. *Osteologisk Materiale. Innledning-fisk-fugl. Varanger-funnene IV* (Universitetsforlaget, 1967).
- Olsen, B. *Stabilitet og Endring. Produksjon og Samfunn i Varanger 800 f.Kr.–1700 e.Kr.* (University of Tromsø, 1984).
- Johansen, O. S. Det eldste jordbruket i Nord-Norge. En arkeologisk oversikt in *Introduksjonen av Jordbruk i Norden. Foredrag Holdt ved Fellesnordisk Symposium i Oslo April 1980* (ed. Sjøvold, T.) 195–208 (Det Norske Videnskaps-Akademi, 1982).
- Arntzen, J. E. Jordbruksbosetting i bronsealder og førromersk jernalder på Kveøya i Nord-Norge. *UBAS. Universitetet i Bergen Arkeologiske Skrifter 7*, 19–33 (2013).
- Arntzen, J. E. Sandvika in Northern Norway: The northernmost 'Bronze Age' settlement in Scandinavia. *Fennoscandia Archaeologica XXXII*, 3–34 (2015).
- Johansen, O. S. *Synspunkter på Jernalderens Jordbruksamfunn i Nord-Norge. Stensilerie B nr 29* (University of Tromsø, 1990).
- Bjørnstad, G., Flagstad, Ø., Hufthammer, A. K. & Røed, K. H. Ancient DNA reveals a major genetic change during the transition from hunting economy to reindeer husbandry in northern Scandinavia. *J. Archaeol. Sci. 39*, 102–108 (2012).
- Mulk, I. *Sirkas - ett Samiskt Fångstamhälle i Förändring Kr.f.–1600 e.Kr. Studia Archaeologica Universitatis Umensis 6* (University of Umeå, 1994).
- Aronsson, K. Arkeologiska och paleoekologiska undersökningar av renskötarboplatser in *Fra Villreinjakt till Reindrift – Gåddebidvos Boatsojsujttu* (ed. Andersen, O.) 109–123 (Båhko, 2005).
- Hood, B. C. & Olsen, B. Virdnejavri 112. A Late Stone Age - Early Metal Period site from interior Finnmark, North Norway. *Acta Archaeologica 58*, 105–125 (1988).
- Jørgensen, R. The Early Metal Age in Nordland and Troms. *Acta Borealia 3*, 61–87 (1986).
- Twiss, K. The archaeology of food and social diversity. *Journal of Archaeological Research 20*, 357–395 (2012).
- Johansen, O. S. Early farming north of the Arctic Circle. *Norwegian Archaeological Review 12*, 22–32 (1979).
- Correa-Ascencio, M. & Evershed, R. P. High throughput screening of organic residues in archaeological potsherds using direct acidified methanol extraction. *Analytical Methods 6*, 1330–1340 (2014).
- Denham, S. D. *Animal Bone Fragments from Sandvika, Tromsø Commune* (University of Bergen, 2014).
- The University Museum of Bergen's osteological collections. <https://reg.app.uib.no/apex/f?p=608:1:2415677446625> (2017).

39. Schanche, K. *Mortensnes en Boplass i Varanger. Et Studie av Samfunn og Materiell Kultur Gjennom 10.000 År* (University of Tromsø, 1988).
40. Fortelius, M. *Suomussalmi Kalmosärkkä 14244, 14504, 14829 & 14830. Osteologinen Analyysi* (Finnish National Board of Antiquities, 1980).
41. Mannermaa, K. Birds in Finnish prehistory. *Fennoscandia Archaeologica* **XX**, 3–39 (2003).
42. Fortelius, M. *Suomussalmi Kelloisten Tuli 14246, 14505 & 14831. Osteologinen Analyysi* (Finnish National Board of Antiquities, 1980).
43. Ukkonen, P. Kemijärvi Neitilä 4 (KM 15671)/Sarvas 1962. *Luuanalyysi 22.7.1996* (Finnish National Board of Antiquities, 1996).
44. Ukkonen, P. Kemijärvi Neitilä 4 (KM 16145)/Sarvas 1963. *Luuanalyysi 22.7.1996* (Finnish National Board of Antiquities, 1996).
45. Ukkonen, P. Kemijärvi Neitilä 4 (KM 16553)/Sarvas 1964. *Luuanalyysi 22.7.1996* (Finnish National Board of Antiquities, 1996).
46. Bronk Ramsey, C. Radiocarbon calibration and analysis of stratigraphy: the OxCal program. *Radiocarbon* **37**, 425–430 (1995).
47. Bronk Ramsey, C. Development of the radiocarbon calibration program. *Radiocarbon* **43**, 355–364 (2001).
48. Reimer, P. J. *et al.* IntCal13 and Marine13 radiocarbon age calibration curves 0–50,000 years cal BP. *Radiocarbon* **55**, 1869–1887 (2013).
49. Pääkkönen, M., Evershed, R. P. & Asplund, H. Compound-specific stable carbon isotope values of fatty acids in modern aquatic and terrestrial animals from the Baltic Sea and Finland as an aid to interpretations of the origins of organic residues preserved in archaeological pottery. *Journal of Nordic Archaeological Science*, Accepted manuscript.

## Acknowledgements

This study was funded by the Academy of Finland Pots, Food, and Function Project (SA258294) and the Turku University Foundation. The Academy of Finland-funded project Borrowing from the neighbour (SA286499) is thanked. RPE acknowledges the ERC Advanced Grant “NeoMilk” (FP7-IDEAS-ERC/324202) for support. The UK Natural Environment Research Council is thanked for mass spectrometry facilities (GR3/2951, GR3/3758, and FG6/36101). The Finnish National Board of Antiquities and the University Museum of Tromsø are also thanked for providing the sherds for the study.

## Author Contributions

M.P., A.B., B.O., R.P.E., and H.A. wrote the paper. M.P. performed the analytical work and the data analysis. All authors reviewed and approved the paper.

## Additional Information

**Supplementary information** accompanies this paper at <https://doi.org/10.1038/s41598-018-19409-8>.

**Competing Interests:** The authors declare that they have no competing interests.

**Publisher's note:** Springer Nature remains neutral with regard to jurisdictional claims in published maps and institutional affiliations.



**Open Access** This article is licensed under a Creative Commons Attribution 4.0 International License, which permits use, sharing, adaptation, distribution and reproduction in any medium or format, as long as you give appropriate credit to the original author(s) and the source, provide a link to the Creative Commons license, and indicate if changes were made. The images or other third party material in this article are included in the article's Creative Commons license, unless indicated otherwise in a credit line to the material. If material is not included in the article's Creative Commons license and your intended use is not permitted by statutory regulation or exceeds the permitted use, you will need to obtain permission directly from the copyright holder. To view a copy of this license, visit <http://creativecommons.org/licenses/by/4.0/>.

© The Author(s) 2018