

NOTTINGHAM
TRENT UNIVERSITY

**DISCUSSION PAPERS
IN
ECONOMICS**

No. 2017/7 ISSN 1478-9396

**CAN THE INSIDER-OUTSIDER THEORY EXPLAIN
UNEMPLOYMENT HYSTERESIS IN OCED
COUNTRIES?**

**DIMITRIOS BAKAS
YOUSEF MAKHLOUF**

JULY 2017

DISCUSSION PAPERS IN ECONOMICS

At Nottingham Business School, our Working Papers Series in Economics include a wide variety of approaches reflecting our research interests and academic expertise.

This paper is part of the new series, ***Discussion Papers in Economics***.

Earlier papers can be found at:

<https://www.ntu.ac.uk/research/research-at-ntu/academic-schools/research-at-nottingham-business-school/nbs-working-papers>

Please contact the Editor for enquiries concerning any of our Discussion Papers:

Marie Stack
Division of Economics
Nottingham Trent University
50 Shakespeare Street
Nottingham NG1 4FQ
UNITED KINGDOM

Email: Marie.Stack@ntu.ac.uk

Tel: + 44 (0)115 848 3880

Can the Insider-Outsider Theory Explain Unemployment Hysteresis in OECD Countries?

Dimitrios Bakas ^{a,b} and Yousef Makhoulf ^a

^a*Nottingham Business School, Nottingham Trent University, UK*

^b*Rimini Centre for Economic Analysis (RCEA), Italy*

E-mail: dimitrios.bakas@ntu.ac.uk, yousef.makhoulf@ntu.ac.uk

Abstract

The insider-outsider theory has been commonly used to explain the hysteretic behaviour of unemployment. However, there is no empirical evidence about the validity of insiders' power on explaining the persistence of unemployment. This paper, using panel unit root tests that allow for the presence of covariates, addresses this gap and examines whether the insider-outsider theory, by means of various labour market proxies, can explain the hysteresis hypothesis for the OECD countries over 1960-2013. Our results show that although unemployment rate exhibits a pronounced hysteretic behaviour in OECD countries, this behaviour is reversed once we consider the insider-outsider proxies as covariates. This validates the role of insiders' power as a key source of unemployment hysteresis.

Keywords: *Insider-outsider theory, Hysteresis, Unemployment, Panel unit root tests*

JEL Classification: *C23, E24, J51, J64*

1. Introduction

An extensive strand of the literature tests the hysteresis in unemployment, a hypothesis which implies that any deviations of unemployment from its natural rate will be permanent, as suggested by Blanchard and Summers (1986, 1987). The empirical literature, however, provides mixed evidence. Whilst some studies have documented evidence of hysteresis, e.g. Mitchell (1993) and Bakas and Papapetrou (2014), others, such as Jaeger and Parkinson (1994), Arestis and Mariscal (1999) and Camarero and Tamarit (2004), provide evidence against. Noticeably, these studies examine the hysteresis hypothesis using alternative unit root testing techniques and/or different samples and pay no attention to investigate the sources of this phenomenon, which is important in addressing the persistence of unemployment.

The insider-outsider theory has long been used to explain hysteresis in unemployment (Lindbeck and Snower, 1988). According to this theory, people who remain employed, insiders, are able to secure wage increases for themselves and prevent the unemployed, outsiders, from competing wages down (Blanchard and Summers, 1987 and Song and Wu, 1998). Insiders' power reflects labour market rigidities and turnover costs which may affect the unemployment persistence level. Despite the widespread use of the insider-outsider theory as the key source of unemployment hysteresis, little is known about its validity empirically, and this is where our main contribution lies. To the best of our knowledge, this is the first empirical study that addresses this gap and evaluates whether the insider-outsider theory, proxied by the measures of trade union density (*Union*), coordination of wage-setting (*Coord*) and level of wage-bargaining (*Wbl*), can explain the persistence of unemployment rate in a sample of OECD countries over the period 1960-2013.

Theoretically, if labour market institutions turn to be more rigid, wages will start to increase. If this push in wages is not compatible with productivity, employment will tend to fall until the point that the higher unemployment in the economy will lead to a downward pressure on the wages that will offset the initial effect of the higher labour market rigidity. Thus, this mechanism can explain the impact of institutional rigidity on the natural rate of unemployment (Saint-Paul, 2004). However, most OECD countries have experienced changes in labour market rigidities over the last decades. For example, many European countries have faced a sharp increase in

unemployment benefits after the 1960s, while the employment protection legislation index has increased for most of the countries over this period (Nickell, 2003). Furthermore, there is significant heterogeneity of labour market rigidities across the OECD countries (Saint-Paul, 2004). Therefore, a series of studies have explored the relation between rigidities in labour market institutions and the rate of unemployment, and find that institutional rigidities play a vital role on explaining unemployment patterns and persistence (see for example Belot and Van Ours, 2001, 2004 and Nickell, 2003). Finally, an important dimension of this environment is the power of the insiders which can determine labour market rigidities in the economy (Lindbeck and Snower, 1988). This paper contributes to this strand of the literature by analysing the nexus between insiders' power, as a proxy of labour market rigidities, and unemployment persistence.

Our empirical framework extends the panel unit root tests to allow for the presence of covariates in the testing equation of the hysteresis hypothesis for unemployment. By doing so, we take into account the information that is contained in the insider-outsider covariates, and thus conduct a direct test for the insider-outsider theory. Our results show, first, that using conventional panel unit root tests we find evidence of hysteresis in unemployment for the OECD countries. However, this result is completely reversed, and the unit root in unemployment rate is strongly rejected, once we employ the panel unit root tests allowing for the insider-outsider covariates. This supports the insider-outsider theory as a key source of the hysteretic behaviour of unemployment.

The rest of the paper is organized as follows. [Section 2](#) describes the data. [Section 3](#) provides the empirical methodology, while [Section 4](#) presents our empirical results. Finally, [Section 5](#) concludes.

2. Data

We use annual data from 1960 to 2013 for a panel of 17 OECD countries.¹ This is the longest

¹ The 17 OECD countries in our sample are: Australia, Austria, Belgium, Canada, Denmark, Finland, France, Germany, Ireland, Italy, Japan, Netherlands, Norway, Sweden, Switzerland, United Kingdom, United States.

period for which the data for the labour market measures; trade union density, coordination of wage-setting and the level of wage-bargaining, are available.² The source of unemployment rate (*Un. Rate*) and trade union density (*Union*) is the OECD labour force statistics whilst the source of the coordination of wage-setting (*Coord*) and the level of wage-bargaining (*Wbl*) is the ICTWSS Database Version 5.1.³ In addition, we have created the variable *Power* that consists the first principal component of the three labour market institution covariates (*Union*, *Coord* and *Wbl*). This aggregate measure encapsulates the insiders' power of the three proxies.

Trade union density is the trade union membership as a percentage of wage and salary earners in employment. Trade union activity, which only represents the insiders' interests, is considered as the most obvious source of insiders' power (Lindbeck and Snower, 1988, Layard and Bean, 1989 and Emmenegger, 2009). Moreover, we use two proxies of wage-bargaining level. The coordination of wage-setting is a discrete measure, ranging from 5 to 1, reflecting the degree of coordination from economy-wide bargaining to fragmented bargaining, confined largely to firm-level. In addition, the level of wage-bargaining is a discrete measure that represents the predominant level at which wage bargaining takes place, ranging from 5 (national or central level) to 1 (local or company bargaining level), see van Ours, 2015. The high wage-bargaining power of insiders increases the equilibrium rate of unemployment via boosting labour market rigidities (Saint-Paul, 2004). Additionally, bargaining power is positively associated with turnover costs thereby it strengthens the position of insiders relative to outsiders, which enhances the wage pressure and unemployment rate (Lindbeck and Snower, 1988 and Holmlund, 2014).

Figure 1 shows the evolution of the unemployment rate for the 17 OECD countries against the OECD average for the period 1960-2013. The figure shows the substantial heterogeneity of OECD labour markets. Saint-Paul (2004) illustrates that the observed divergence in unemployment rates across Europe is a real difference in labor markets rather than a statistical artifact since this divergence cannot be explained by obvious measurement issues such as different definitions of unemployment across countries.

² Minimum wages, labour turnover cost and employment protection legislation are other potential measures of the insider-outsider theory, however, the data for these factors are limited.

³ We focus on these three proxies since the covariate panel unit root test of Pesaran et al. (2013) is available only for a maximum of three covariates.

Figure 1: Unemployment Rate for the 17 OECD Countries against the OECD Average

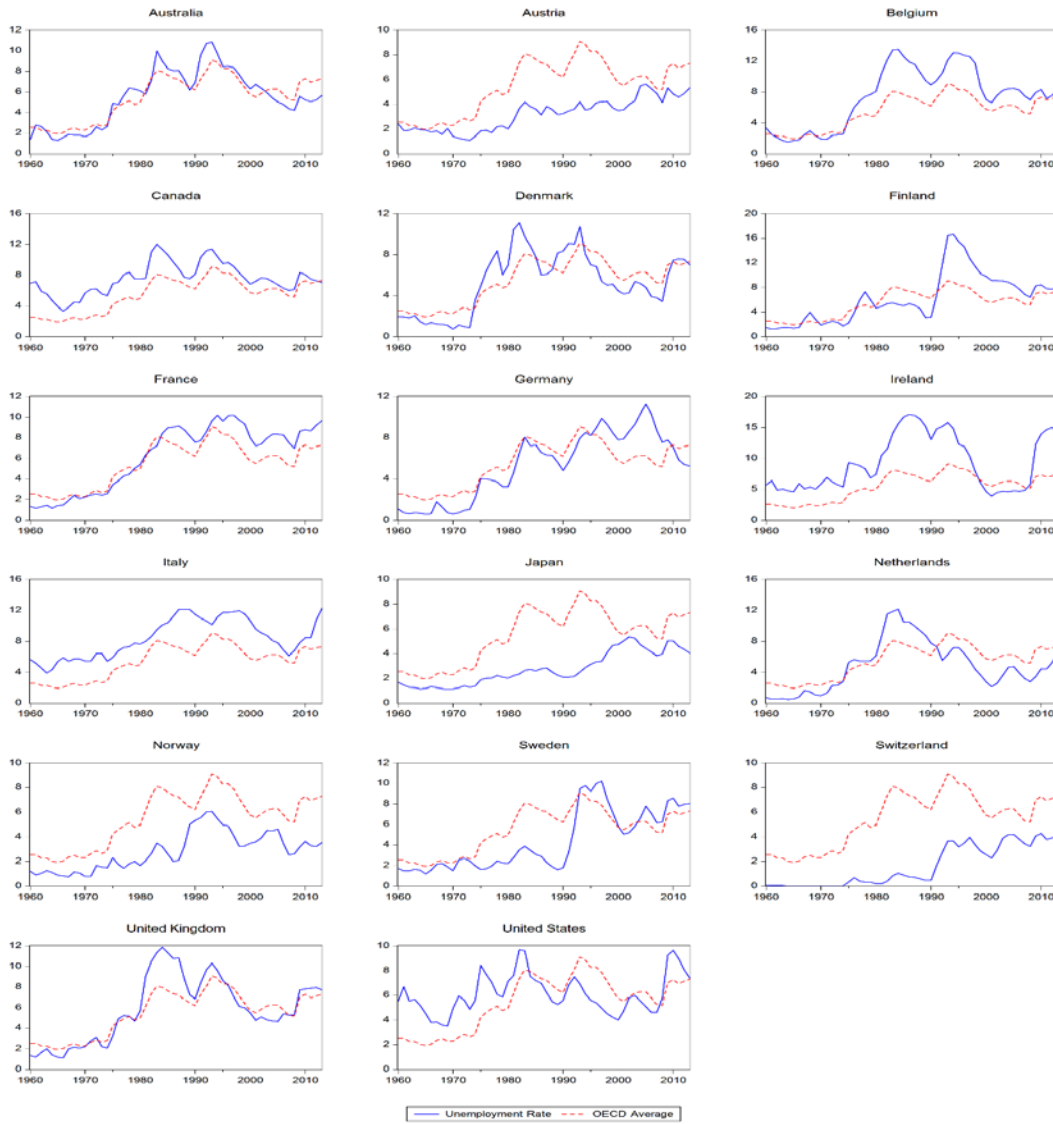


Table 1 presents summary statistics for the unemployment rate and the covariates for our panel. A high variation in all variables is evident, for example trade union density (*Union*) range from 7% to 84%. Furthermore, the average of both *Coord* and *Wbl* indicates that the wage-bargaining level, and thus the insiders' power, is relatively high in our sample.

Table 1: Summary Statistics

| <i>Variable</i> | <i>Mean</i> | <i>Std. Dev.</i> | <i>Minimum</i> | <i>Maximum</i> |
|-----------------|-------------|------------------|----------------|----------------|
| <i>Un. Rate</i> | 5.458 | 3.468 | 0.002 | 17.147 |
| <i>Union</i> | 41.041 | 18.904 | 7.548 | 83.863 |
| <i>Coord</i> | 3.314 | 1.412 | 1.000 | 5.000 |
| <i>Wbl</i> | 3.022 | 1.349 | 1.000 | 5.000 |
| <i>Power</i> | 0.000 | 1.449 | -2.728 | 2.778 |

Note: Descriptive statistics for the OECD sample, based on $N = 17$ and $T = 54$ ($T \times N = 918$ Obs).

Table 2 shows the correlation coefficients between the covariates and the unemployment rate. The high correlation between *Coord* and *Wbl* is anticipated since both covariates reflect the wage-bargaining level. The positive correlation between *Union* and wage-bargaining level proxies (*Coord* and *Wbl*) indicates that all three covariates operate in an analogous manner, i.e., they reflect the power of insiders relative to outsiders.

Table 2: Correlation Coefficients between Covariates

| | <i>Union</i> | <i>Coord</i> | <i>Wbl</i> |
|--------------|--------------|--------------|------------|
| <i>Union</i> | 1 | | |
| <i>Coord</i> | 0.473 | 1 | |
| <i>Wbl</i> | 0.570 | 0.736 | 1 |

Note: The numbers refer to the Polyserial or Polychoric correlation coefficient depending on the type of the variables.

3. Empirical methodology

To test for the hysteresis hypothesis (i.e., the null hypothesis of the presence of a unit root) in the dynamics of the unemployment rate in our sample, we rely on panel augmented Dickey-Fuller (ADF) unit root tests. Specifically, we use the *MW* test of Maddala and Wu (1999), the *CH* test

of Choi (2001), the *IPS* test of Im et al. (2003) and the *CIPS* test of Pesaran (2007), which accounts for cross-sectional dependence across the countries.

In the case where the null hypothesis of hysteresis in unemployment is not rejected, we proceed and explore the insider-outsider theory as source of the hysteretic behaviour of unemployment, by employing panel unit root tests that allow for the presence of various labour market proxies as covariates in the panel regression. To do so, we use two panel unit root tests proposed by Pesaran et al. (2013), the *CIPSM* and *CSBM* tests, which incorporate additional covariates in the augmented Dickey-Fuller panel regression and account for a multifactor error structure. Therefore, these tests can exploit the information contained in a number of additional covariates (the labour market proxies) that are assumed to share the common factors with the unemployment rate. Following Pesaran et al. (2013), we augment the ADF panel regression with the cross-section averages of the lagged levels and first-differences of the unemployment rate and the additional covariates. In particular, we employ the following ADF panel regression:

$$\begin{aligned} \Delta U_{i,t} = & \alpha_i + \beta_i t + \phi_i U_{i,t-1} + \sum_{j=1}^p \delta_{ij} \Delta U_{i,t-j} \\ & + c_i \bar{U}_{t-1} + \sum_{j=0}^p d_{ij} \Delta \bar{U}_{t-j} + e_i \bar{Z}_{t-1} + \sum_{j=0}^p f_{ij} \Delta \bar{Z}_{t-j} + u_{i,t}, \quad (1) \end{aligned}$$

where $U_{i,t}$ is the unemployment rate for country i at time t , \bar{U}_t and \bar{Z}_t are the cross section averages of the unemployment rate and the measures of insiders' power respectively, with $\bar{U}_{t-1} = N^{-1} \sum_{j=1}^N U_{j,t-1}$ and $\bar{Z}_{t-1} = N^{-1} \sum_{j=1}^N Z_{j,t-1}$. Therefore, as suggested by Pesaran et al. (2013), the *CIPSM* test is based on the average of the individual cross-sectionally augmented ADF t -ratios for $\hat{\phi}_i$ (t_{ϕ_i}) as follows:

$$CIPSM = N^{-1} \sum_{i=1}^N t_{\phi_i}(N, T), \quad (2)$$

while, the *CSBM* test is based on the average of the cross-sectionally augmented Sargan-Bhargava statistics, given by:

$$CSBM = N^{-1} \sum_{i=1}^N CSB_{\phi_i}(N, T), \quad (3)$$

with $CSB_{\phi_i}(N, T) = T^{-2} \sum_{t=1}^T \hat{u}_{it}^2 / \hat{\sigma}_i^2$, and where $\hat{u}_{it} = \sum_{j=1}^t \hat{\varepsilon}_{ij}$ and $\hat{\sigma}_i^2 = \sum_{\tau=1}^T \hat{\varepsilon}_{it}^2 / [T - (k + 1)]$ and $\hat{\varepsilon}_{it}$ are the residuals from the regression of Equation (1).

Simulated critical values of both tests are listed in Pesaran et al. (2013). Both tests reject the null hypothesis of hysteresis in unemployment (i.e., the unit root null hypothesis) when the value of the statistic is less than the respective critical value. According to Pesaran et al. (2013), neither test shows any size distortions for combinations of N and T , whilst the *CSBM* test exhibits higher power compared to the *CIPSM* test for smaller T .

Our testing framework, thus, uses an augmented Dickey-Fuller panel regression with the inclusion of alternative measures of labour market (and possible combinations of them) as additional covariates to testing for unit root in the unemployment rate. In this way, a rejection of the null hypothesis of the presence of a unit root in unemployment rate will lead to the conclusion that hysteresis in unemployment is absorbed by the labour market covariates, and thus it can be explained by the insider-outsider theory. Therefore, the information contained in the proxies of the insider-outsider theory affects the power of the unit root test, indicating that the unemployment rate in OECD countries does not display hysteretic behaviour.

4. Results

Tables 3 and 4 present the results based on the alternative panel unit root tests for the unemployment rate without and with covariates, both in the case of an intercept and that of an intercept and a linear trend.⁴ Specifically, Table 3 presents the results of the tests without the covariates: the *MW*, *CH*, *IPS* tests and the *CIPS* test that accounts also for cross-sectional correlation. All tests, clearly, do not allow us to reject the null of a unit root in the unemployment rate at the 5% level of significance, indicating that unemployment exhibits pronounced hysteretic behaviour for the panel of OECD countries.⁵

⁴ Following Pesaran et al. (2013), we use the lag augmentation order for the panel tests according to $p = [4(T/100)^{1/4}]$.

⁵ This evidence is also confirmed by the individual ADF unit root tests for each country. These results show that for all countries we cannot reject the null of a unit root (with the exception of the version with trend where the results hold for the vast majority of the countries (i.e., 16 out of 17 countries)). This is a strong evidence of hysteresis for the OECD sample. These results are available from the authors upon request.

Table 3: Panel Unit Root Tests (without Covariates)

| <i>Un. Rate</i> | <i>Without Trend</i> | | | | <i>With Trend</i> | | | |
|-----------------|----------------------|-----------|------------|-------------|-------------------|-----------|------------|-------------|
| | <i>MW</i> | <i>CH</i> | <i>IPS</i> | <i>CIPS</i> | <i>MW</i> | <i>CH</i> | <i>IPS</i> | <i>CIPS</i> |
| | 28.770 | -0.319 | -1.612 | -2.005 | 30.349 | 0.306 | -2.133 | -2.523 |

Notes: **, * indicate rejection of the null hypothesis of a unit root at the 5% and 10% significance level respectively. The lag order is selected according to $p = [4(T/100)^{1/4}]$.

Table 4 presents the results of the covariate panel unit root tests of Pesaran et al. (2013), *CIPSM* and *CSBM*, that allow us to control for the addition of the insider-outsider covariates (*Union*, *Coord* and *Wbl*). To explore the robustness of these tests to the choice of the additional covariates used in the ADF panel augmentation in Equation (1), we report the results of both *CIPSM* and *CSBM* tests using all possible combinations of the covariates (*Union*, *Coord* and *Wbl*), as well as using the first principal component of the three covariates (*Power*). In contrast to the previous outcome of the tests without covariates, the evidence based on the *CIPSM* covariate panel unit root test shows that the null hypothesis of a unit root in the panel is strongly rejected at the 5% (in 10 out of 16 cases) or 10% level (in 3 cases) for all possible covariates and for most of the alternative combinations of them. The only exceptions are in the case of using *Coord* as the additional covariate where the *CIPSM* test does not reject the null in both versions with and without trend, and the case where the two covariates (*Coord* and *Wbl*) are used in the version without trend, where the null cannot be rejected at the conventional levels of significance. The results based on the *CSBM* test are similar and reveal stronger evidence of rejection of the null hypothesis of hysteresis for all sixteen cases of choices of covariates.⁶

⁶ Our results are robust to alternative sets of OECD countries. For example, we have explored the set of the 15 OECD countries used in Mitchell (1993) and Song and Wu (1998) with qualitatively similar findings. These results are available from the authors upon request.

Table 4: Panel Unit Root Tests (with Covariates)

| <i>Un. Rate</i> | <i>CIPSM</i> | | <i>CSBM</i> | |
|------------------------------------|----------------------|---------|-------------------|---------|
| | <i>Without Trend</i> | | <i>With Trend</i> | |
| <i>Covariates</i> | | | | |
| <i>Union</i> | -2.824** | 0.143** | -2.927** | 0.080** |
| <i>Coord</i> | -2.117 | 0.125** | -2.598 | 0.098* |
| <i>Wbl</i> | -2.561** | 0.137** | -2.667* | 0.082** |
| <i>Power</i> | -2.620** | 0.140** | -2.733** | 0.087** |
| <i>Union & Coord</i> | -2.678** | 0.144** | -3.020** | 0.079** |
| <i>Union & Wbl</i> | -2.716** | 0.135** | -2.948** | 0.073** |
| <i>Coord & Wbl</i> | -2.545** | 0.121** | -2.555 | 0.084* |
| <i>Union & Coord & Wbl</i> | -2.477* | 0.153** | -2.778* | 0.074* |

Notes: **, * indicate rejection of the null hypothesis of a unit root at the 5% and 10% significance level respectively. The critical values for the *CIPSM* test, in the case of one additional covariate, are -2.32 and -2.21 with an intercept only and -2.73 and -2.63 with an intercept and a linear trend for the 5% and 10% significance levels, respectively. In addition, the critical values for the *CSBM* test, in the case of one additional covariate, are 0.238 and 0.264 with an intercept only and 0.097 and 0.104 with an intercept and a linear trend for the 5% and 10% significance levels, respectively. The critical values for the *CIPSM* test (with two additional covariate) with an intercept only are -2.43 and -2.31 and with an intercept and a linear trend are -2.80 and -2.68 for the 5% and 10% significance levels, respectively. The critical values for the *CSBM* test (with two additional covariate) with an intercept only are 0.207 and 0.231 and with an intercept and a linear trend are 0.084 and 0.090 for the 5% and 10% significance levels, respectively. The critical values for the *CIPSM* test (with three additional covariate) with an intercept only are -2.49 and -2.37 and with an intercept and a linear trend are -2.81 and -2.69 for the 5% and 10% significance levels, respectively. The critical values for the *CSBM* test (with three additional covariate) with an intercept only are 0.178 and 0.200 and with an intercept and a linear trend are 0.072 and 0.078 for the 5% and 10% significance levels, respectively. The lag order is selected according to $p = [4(T/100)^{1/4}]$.

Overall, our results suggest that while we find a strong evidence of hysteretic behaviour of unemployment for the OECD countries when we use the panel tests without covariates, this result is completely reversed when we use the panel tests that allow for the insider-outsider covariates. The inclusion of the proxies makes the unemployment rate stationary, leading to the conclusion that the hysteretic behaviour of unemployment can be explained by the insider-

outsider theory. Insiders' power, thus, determines the level of unemployment persistence through labour market rigidities and turnover costs.

5. Conclusion

Despite the widespread use of insider-outsider theory to describe the hysteretic behaviour of unemployment, little is known empirically about its validity as a cause of this behaviour. Using three proxies of insider-outsider power, this paper investigates empirically the relationship between insider-outsider theory and unemployment hysteresis. To do so, we employ covariate panel unit root tests on a sample of 17 OECD countries over the period 1960-2013. Our initial findings provide evidence of hysteretic behaviour of unemployment for our sample. However, we find that the insider-outsider theory, proxied by the trade union density, the coordination of wage-setting and the level of wage-bargaining, can absorb the persistence of unemployment rate in OECD countries.

Our findings suggest that reforms towards lower labour market rigidities, such as lessening the power of insiders through limiting the role of trade union and/or reducing the wage-bargaining level, can lead to lower unemployment persistence.

This study focuses on the insider-outsider theory, however, future research can investigate empirically other potential sources of unemployment hysteresis suggested by the literature, such as intensity of job search, demoralisation, and employment protection. Finally, we have used three proxies of labour market rigidities associated with insiders' power due to data limitation, however, future studies can also test other factors that affects labour market rigidities such as labour turnover cost and employment protection.

References

- Arestis, P., & Mariscal, I.B.F. (1999). Unit roots and structural breaks in OECD unemployment. *Economics Letters*, 65(2), 149-156.
- Bakas, D., & Papapetrou, E. (2014). Unemployment by gender: Evidence from EU countries. *International Advances in Economic Research*, 20(1), 103-111.
- Belot, M., & van Ours, J.C. (2001). Unemployment and labor market institutions: an empirical analysis. *Journal of the Japanese and International Economies*, 15, 1-16.
- Belot, M., & van Ours, J.C. (2004). Does the recent success of some OECD countries in lowering their unemployment rate lie in the clever design of their labor market reforms? *Oxford Economic Papers*, 56, 621-642.
- Blanchard, O.J., & Summers, L.H. (1986). Hysteresis and the European unemployment problem. *NBER Macroeconomics Annual*, 1, 15-78.
- Blanchard, O.J., & Summers, L.H. (1987). Hysteresis in unemployment. *European Economic Review*, 31, 288-295.
- Camarero, M., & Tamarit, C. (2004). Hysteresis vs. natural rate of unemployment: New evidence for OECD countries. *Economics Letters*, 84(3), 413-417.
- Choi, I. (2001). Unit root tests for panel data. *Journal of International Money and Finance*, 20(2), 249-272.
- Emmenegger, P. (2009). Barriers to entry: Insider/outsider politics and the political determinants of job security regulations. *Journal of European Social Policy*, 19(2), 131-146.
- Holmlund, B. (2014). What do labor market institutions do?. *Labour Economics*, 30, 62-69.
- Im, K.S., Pesaran, M.H., & Shin, Y. (2003). Testing for unit roots in heterogeneous panels. *Journal of Econometrics*, 115(1), 53-74.
- Jaeger, A., & Parkinson, M. (1994). Some evidence on hysteresis in unemployment rates. *European Economic Review*, 38(2), 329-342.
- Layard, R., & Bean, C. (1989). Why does unemployment persist?. *The Scandinavian Journal of Economics*, 371-396.
- Lindbeck, A., & Snower, D. (1988). The insider-outsider theory of employment and unemployment. MIT Press.
- Maddala, G.S., & Wu, S. (1999). A comparative study of unit root tests with panel data and a new simple test. *Oxford Bulletin of Economics and Statistics*, 61(S1), 631-652.

- Mitchell, W.F. (1993). Testing for unit roots and persistence in OECD unemployment rates. *Applied Economics*, 25, 1489-1501.
- Nickell, S. (2003). Labour market institutions and unemployment in OECD countries. *CESifo DICE Report*, 1(2), 13-26.
- Pesaran, M.H. (2007). A simple panel unit root test in the presence of cross-section dependence. *Journal of Applied Econometrics*, 22(2), 265-312.
- Pesaran, M.H., Smith, L.V., & Yamagata, T. (2013). Panel unit root tests in the presence of a multifactor error structure. *Journal of Econometrics*, 175(2), 94-115.
- Saint-Paul, G. (2004). Why are European countries diverging in their unemployment experience?. *The Journal of Economic Perspectives*, 18(4), 49-68.
- Song, F.M., & Wu, Y. (1998). Hysteresis in unemployment: Evidence from OECD countries. *The Quarterly Review of Economics and Finance*, 38(2), 181-192.
- van Ours, J.C. (2015). The Great Recession was not so great. *Labour Economics*, 34, 1-12.

DISCUSSION PAPERS IN ECONOMICS

- 2017/7 Dimitrios Bakas and Yousef Makhlouf, *Can the Insider-Outsider Theory explain Unemployment Hysteresis in the OECD Countries?*
- 2017/6 Dimitrios Bakas, Georgios Chortareas and Georgios Magkonis, *Volatility and Growth: A not so Straightforward Relationship.*
- 2017/5 Will Rossiter, *Prospects and Challenges for City Region Devolution in Nottingham and the East Midlands.*
- 2017/4 Chunping Liu and Zhirong Ou, *What determines China's housing price dynamics? New evidence from a DSGE-VAR.*
- 2017/3 Morakinyo O. Adetutu and Thomas G. Weyman-Jones, *Fuel subsidies versus market power: is there a countervailing second best welfare optimum?*
- 2017/2 Robert Mullings, *Do Institutions moderate Globalization's effect on Growth?*
- 2017/1 Anthony J Glass, Karligash Kenjegalieva, Victor Ajayi, Morakinyou Adetutu, Robin C. Sickles, *Relative Winners and Losers from Efficiency Spillovers in Africa with Policy Implications for Regional Integration.*
- 2016/4 Sara Ornati, *International Environmental Agreements and Domestic Politics.*
- 2016/3 Yanhui Zhu, Jingwen Fan and Jon Tucker, *The impact of UK monetary policy on gold price dynamics.*
- 2016/2 John Ebireri and Alberto Paloni, *Bank Development and a Lower Degree of Sophistication and Diversification of Developing Countries' Exports.*
- 2016/1 Robert Mullings and Aruneema Mahabir, *Growth by Destination: The Role of Trade in Africa's Recent Growth Episode.*
- 2015/1 Andrew Atherton, João R. Faria, Dongxu Wu and Zhongmin Wu, *Human Capital, Entrepreneurial Entry and Survival.*
- 2014/5 Leighton Vaughan Williams, *The US Supreme Court and the 'Affordable Care Act': An Exercise in Closed-Door Forecasting.*
- 2014/4 Juan Carlos Cuestas and Barry Harrison, *Unemployment Persistence in the EU15.*
- 2014/3 Francesco Marchionne and Sunny Parekh, *Growth, Debt, and Inequality.*
- 2014/2 Bo Jiang, Zhongmin Wu, Bruce Philp and Simeon Coleman, *Macro Stress Testing in the Banking System of China.*
- 2014/1 Eghosa Igudia, Rob Ackrill, Simeon Coleman and Carlyn Dobson, *Austerity Measures or Entrepreneurial Development? The case of the Nigerian Informal Economy.*
- 2013/5 Barry Harrison and Theodorus Wisnu Widjaja, *Did the Financial Crisis impact*

on the Capital Structure of Firms?

- 2013/4 Geetha Ravishankar and Marie Stack, *The Gravity Model and Trade Efficiency: A Stochastic Frontier Analysis of Potential Trade*.
- 2013/3 Chunping Liu and Patrick Minford, *How Important is the Credit Channel? An Empirical Study of the US Banking Crisis*.
- 2013/2 Chunping Liu and Patrick Minford, *Comparing Behavioural and Rational Expectations for the US Post-War Economy*.
- 2013/1 Dan Wheatley, *Is it good to share? Debating patterns in availability and use of job share*.
- 2012/3 Simeon Coleman and Vitor Leone, *Time-Series Characteristics Of UK Commercial Property Returns: Testing For Multiple Changes In Persistence*.
- 2012/2 Otavio Ribeiro de Medeiros and Vitor Leone, *Multiple Changes in Persistence vs. Explosive Behaviour: The Dotcom Bubble*.
- 2012/1 Rob Ackrill and Simeon Coleman, *Inflation Dynamics In Central And Eastern European Countries*.
- 2011/4 Simeon Coleman, *Inflation Dynamics and Poverty Rates: Regional and Sectoral Evidence for Ghana*.
- 2011/3 Dan Wheatley and Zhongmin Wu, *Work, Inequality, And The Dual Career Household*.
- 2011/2 Simeon Coleman and Kavita Sirichand, *Fractional Integration and the Volatility Of UK Interest Rates*.
- 2011/1 Simeon Coleman, *Investigating Business Cycle Synchronization In West Africa*.
- 2010/11 Marie Stack and Eric Pentecost, *A Gravity Model Approach To Estimating Prospective Trade Gains in The EU Accession And Associated Countries*.
- 2010/10 Vitor Leone And Bruce Philp, *Surplus-Value And Aggregate Concentration In The UK Economy, 1987-2009*.
- 2010/9 Robert Ackrill and Adrian Kay, *WTO Regulations and Bioenergy Sustainability Certification – Synergies and Possible Conflicts*.
- 2010/8 Paul Alagidede, Simeon Coleman and Juan Carlos Cuestas, *Persistence Of Inflationary Shocks: Implications For West African Monetary Union Membership*.
- 2010/6 Bruce Philp and Dan Wheatley, *The time scarcity and the dual career household: competing perspectives*
- 2010/5 Juan Carlos Cuestas, Sebastián Freille and Patricio O’Gorman, *The media*

- and public agendas: testing for media effects in Argentina Turing the Kirchner administration*
- 2010/4 Vitor Leone, *From property companies to real estate investment trusts: the impact of economic and property factors in the UK commercial property returns*
- 2010/3 Juan Carlos Cuestas and Paulo José Regis, *Purchasing power parity in OECD countries: nonlinear unit root tests revisited*
- 2010/2 Juan Carlos Cuestas and Bruce Philp, *Exploitation and the class struggle*
- 2010/1 Barry Harrison and Winston Moore, *Nonlinearities in Stock Returns for Some Recent Entrants to the EU*
- 2009/7 Joao R. Faria, Le Wang and Zhongmin Wu, *Debts on debts*
- 2009/6 Juan Carlos Cuestas and Luis A. Gil-Alana, *Unemployment hysteresis, structural changes, non-linearities and fractional integration in Central and Eastern Europe*
- 2009/5 Juan Carlos Cuestas and Javier Ordóñez, *Unemployment and common smooth transition trends in Central and Eastern European Countries*
- 2009/4 Stephen Dobson and Carlyn Ramlogan, *Is there a trade-off between income inequality and corruption? Evidence from Latin America*
- 2009/3 Juan Carlos Cuestas and Luís Alberiko Gil-Alana, *Further evidence on the PPP analysis of the Australian dollar: non-linearities, structural changes and fractional integration*
- 2009/2 Estefanía Mourelle and Juan Carlos Cuestas, *Inflation persistence and asymmetries: Evidence for African countries*
- 2009/1 Juan Carlos Cuestas and Barry Harrison, *Further evidence on the real interest rate parity hypothesis in Central and Eastern European Countries: unit roots and nonlinearities*
- 2008/16 Simeon Coleman, *Inflation persistence in the Franc Zone: evidence from disaggregated prices*
- 2008/15 Juan Carlos Cuestas and Paulo Regis, *Nonlinearities and the order of integration of order prices*
- 2008/14 Peter Dawson and Stephen Dobson, *The influence of social pressure and nationality on individual decisions: evidence from the behaviour of referees*
- 2008/13 Juan Carlos Cuestas and Barry Harrison, *Testing for stationarity of inflation in Central and Eastern European Countries*
- 2008/12 Juan Carlos Cuestas and Dean Garratt, *Is real GDP per capita a stationary*

process? Smooth transitions, nonlinear trends and unit root testing

- 2008/11 Antonio Rodriguez Andres and Carlyn Ramlogan-Dobson, *Corruption, privatisation and the distribution of income in Latin America*
- 2008/10 Stephen Dobson and Carlyn Ramlogan, *Is there an openness Kuznets curve? Evidence from Latin America*
- 2008/9 Stephen Dobson, John Goddard and Frank Stähler, *Effort levels in contests: an empirical application of the Tullock model*
- 2008/8 Juan Carlos Cuestas and Estefania Mourelle, *Nonlinearities in real exchange rate determination: Do African exchange rates follow a random walk?*
- 2008/7 Stephen Dobson and John Goddard, *Strategic behaviour and risk taking in football*
- 2008/6 Joao Ricardo Faria, Juan Carlos Cuestas and Estefania Mourelle, *Entrepreneurship and unemployment: A nonlinear bidirectional causality?*
- 2008/5 Dan Wheatley, Irene Hardill and Bruce Philp, *"Managing" reductions in working hours: A study of work-time and leisure preferences in the UK industry*
- 2008/4 Adrian Kay and Robert Ackrill, *Institutional change in the international governance of agriculture: a revised account*
- 2008/3 Juan Carlos Cuestas and Paulo José Regis, *Testing for PPP in Australia: Evidence from unit root test against nonlinear trend stationarity alternatives*
- 2008/2 João Ricardo Faria, Juan Carlos Cuestas and Luis Gil-Alana, *Unemployment and entrepreneurship: A Cyclical Relation*
- 2008/1 Zhongmin Wu, Mark Baimbridge and Yu Zhu, *Multiple Job Holding in the United Kingdom: Evidence from the British Household Panel Survey*

DISCUSSION PAPERS IN POLITICAL ECONOMY

- 2006/3 Ioana Negru, *On Homogeneity and Pluralism within Economics Schools of Thought*
- 2006/2 David Harvie and Bruce Philp, *Learning and Assessment in a Reading Group Format or Reading Capital... For Marks*
- 2006/1 David Harvie, Bruce Philp and Gary Slater, *Regional Well-Being and 'Social Productivity' in Great Britain'*
- 2004/2 Massimo De Angelis and David Harvie, *Globalisation? No Question: Foreign Direct*

Investment and Labour Commanded

2004/1 David Harvie, *Value-Production and Struggle in the Classroom, or, Educators Within, Against and Beyond Capital*

DISCUSSION PAPERS IN APPLIED ECONOMICS AND POLICY

2007/2 Juan Carlos Cuestas, *Purchasing Power Parity in Central and Eastern European Countries: An Analysis of Unit Roots and Non-linearities*

2007/1 Juan Carlos Cuestas and Javier Ordóñez, *Testing for Price Convergence among Mercosur Countries*

2006/2 Rahmi Cetin and Robert Ackrill, *Foreign Investment and the Export of Foreign and Local Firms: An Analysis of Turkish Manufacturing*

2006/1 Robert Ackrill and Adrian Kay, *The EU Financial Perspective 2007-2013 and the Forces that Shaped the Final Agreement*

2004/5 Michael A. Smith, David Paton and Leighton Vaughan-Williams, *Costs, Biases and Betting markets: New evidence*

2004/4 Chris Forde and Gary Slater, *Agency Working in Britain: Character, Consequences and Regulation*

2004/3 Barry Harrison and David Paton, *Do 'Fat Tails' Matter in GARCH Estimation? Stock market efficiency in Romania and the Czech Republic*

2004/2 Dean Garratt and Rebecca Taylor, *Issue-based Teaching in Economics*

2004/1 Michael McCann, *Motives for Acquisitions in the UK*

2003/6 Chris Forde and Gary Slater, *The Nature and Experience of Agency Working in Britain*

2003/5 Eugen Mihaita, *Generating Hypothetical Rates of Return for the Romanian Fully Funded Pension Funds*

2003/4 Eugen Mihaita, *The Romanian Pension Reform*

2003/3 Joshy Easaw and Dean Garratt, *Impact of the UK General Election on Total Government Expenditure Cycles: Theory and Evidence*

2003/2 Dean Garratt, *Rates of Return to Owner-Occupation in the UK Housing Market*

2003/1 Barry Harrison and David Paton, *The Evolution of Stock Market Efficiency in a Transition Economy: Evidence from Romania.*