

Fall 10-2015

Leading from the Center Out: The Joint Library Services Leadership Team at James Madison University

K.T. L. Vaughan

James Madison University, vaughakt@jmu.edu

Kristen S. Shuyler

James Madison University

Kelly N. Miller-Martin

James Madison University, millerkn@jmu.edu

Erika Peterson

James Madison University

Follow this and additional works at: <https://commons.lib.jmu.edu/letfspubs>



Part of the [Business Administration, Management, and Operations Commons](#), and the [Library and Information Science Commons](#)

Recommended Citation

Vaughan, K.T. L.; Shuyler, Kristen S.; Miller-Martin, Kelly N.; and Peterson, Erika, "Leading from the Center Out: The Joint Library Services Leadership Team at James Madison University" (2015). *Libraries*. 58.

<https://commons.lib.jmu.edu/letfspubs/58>

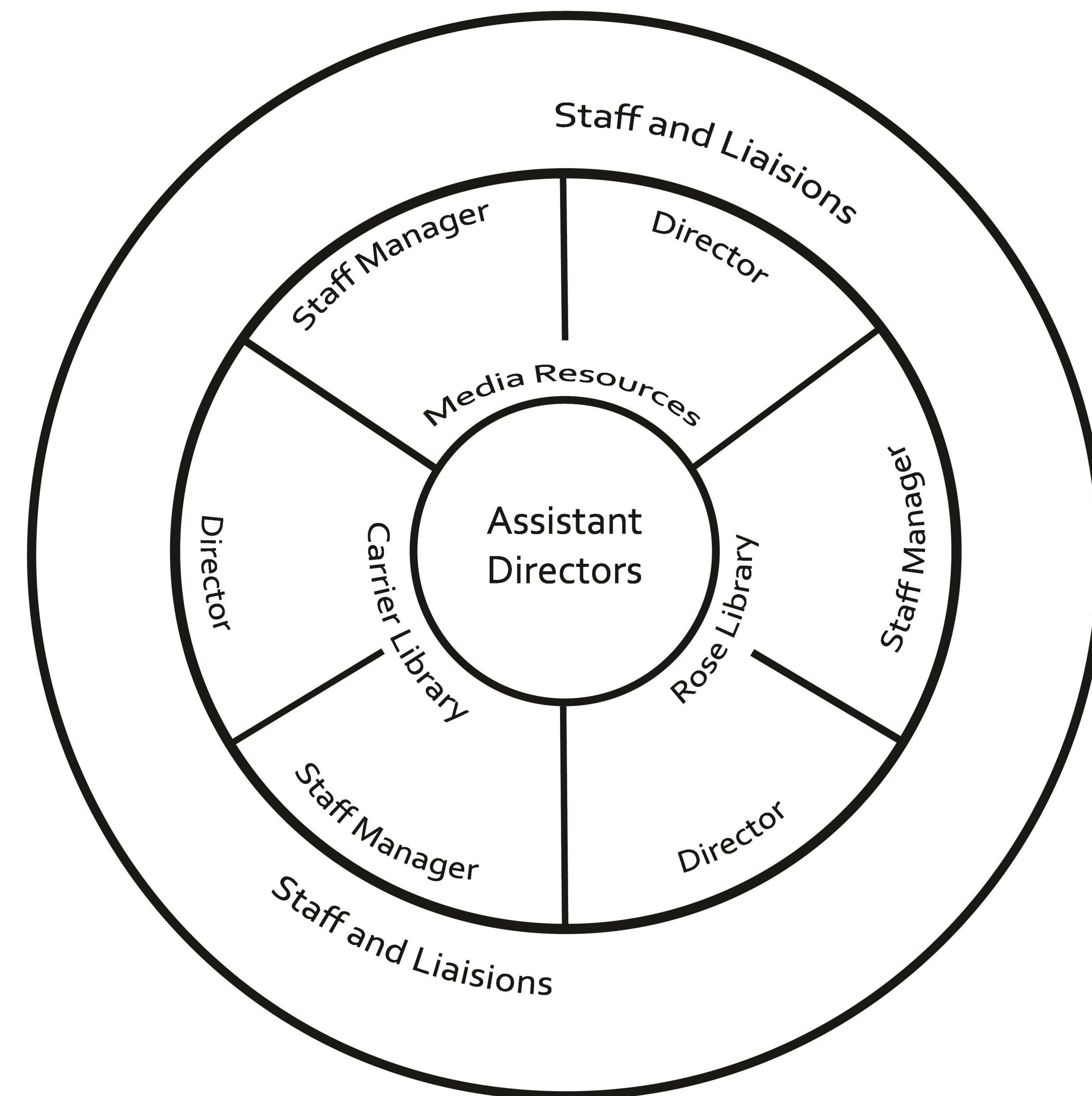
Leading from the Center Out:

The Joint Library Services Leadership Team at James Madison University

In a system with multiple service points, how can leadership work together to keep the library as a whole relevant and central to students?

Carrier Library	Media Resources	Rose Library
Director	Director	Director
Assistant Director		Assistant Director
Staff Manager	Staff Manager	Staff Manager
Staff	Staff	Staff
Liaisons	Liaisons	Liaisons

Competitive Model



Collaborative Model

