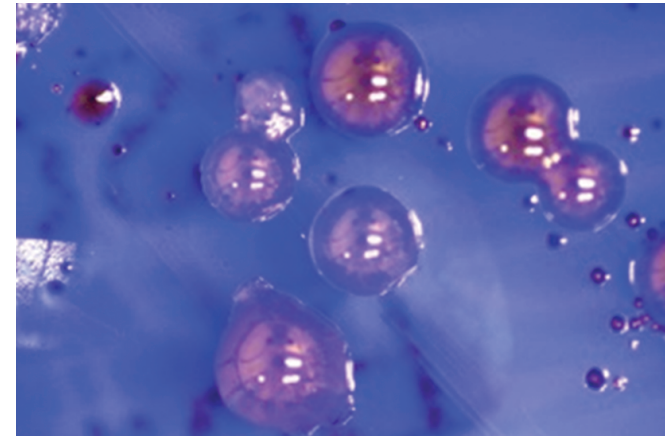


DOCTORAL
THESIS
SAHLGRENKA
ACADEMY

2018

Esophagitis: Aspects on bacteriology, pathophysiology and symptomatology | Elisabeth Norder Grusell



Esophagitis: Aspects on bacteriology, pathophysiology and symptomatology

Elisabeth Norder Grusell



Elisabeth Norder Grusell, MD
Department of Otorhinolaryngology,
Institute of Clinical Sciences,
Sahlgrenska Academy, University of
Gothenburg, Sweden

ISBN 978-91-629-0499-9 (PRINT)
ISBN 978-91-629-0500-2 (PDF)
<http://hdl.handle.net/2077/55965>

Printed by BrandFactory, Gothenburg

SAHLGRENKA ACADEMY
INSTITUTE OF CLINICAL SCIENCES

