

2-25-1966

Scope - Volume 03, Number 15

Loma Linda University

Follow this and additional works at: <http://scholarsrepository.llu.edu/scope>

Recommended Citation

Loma Linda University, "Scope - Volume 03, Number 15" (1966). *Scope*.
<http://scholarsrepository.llu.edu/scope/107>

This Newsletter is brought to you for free and open access by the Loma Linda University Publications at TheScholarsRepository@LLU: Digital Archive of Research, Scholarship & Creative Works. It has been accepted for inclusion in Scope by an authorized administrator of TheScholarsRepository@LLU: Digital Archive of Research, Scholarship & Creative Works. For more information, please contact scholarsrepository@llu.edu.



University SCOPE

Vol. 3, No. 15

Friday, February 25, 1966

Senseman Elected Chairman Trustee Development Post

Laurence A. Senseman, SM '37, a member of the University Board of Trustees, has been elected chairman of its development committee, it was announced recently by Godfrey T. Anderson, PhD, president of the University.

Dr. Senseman, who is medical director of the Fuller Memorial Sanitarium, South Attleboro, Massachusetts, and a practicing psychiatrist, was chosen to replace former chairman F. Harriman Jones, SM'37, who died January 22.

The new chairman, who lives in Seekonk, Massachusetts, received his BS degree from Columbia Union College. He is a diplomate of the National Board and a fellow of the American College of Physicians. He is also a fellow of the American Psychiatric Association and has received certification from the American Board of Psychiatry and Neurology.

Dr. Senseman has also served a number of years as president of the Association of Seventh-day Adventist Self-Supporting Institutions.

James Irvine Foundation Gives \$10,000 for Medical Center

The James Irvine Foundation, Irvine, gave \$10,000 to Loma Linda University this month as part of its program of financial aid to private educational institutions in California.

Presenting the check was A. J. McFadden, vice president of the foundation. Wesley I. Unterseher, associate director of development, accepted the gift for the University.

The funds will be applied toward construction of the University's new Medical Center, scheduled for completion in the spring of 1967.

Founded in 1937, The James Irvine Foundation has distributed nearly \$6 million, most of it since 1948, to some 250 different charitable institutions and activities in the state of California.

The foundation has made grants for medical and scientific research, scholarships, hos-



A. J. McFADDEN, vice president of the James Irvine Foundation (left), gives a check for \$10,000 to Wesley I. Unterseher, in behalf of the University. The funds will be applied toward completion of the new Medical Center.

Loma Linda University Origins Reviewed By White Estate Publications Secretary



ARTHUR L. WHITE, publications secretary of the Ellen G. White Estate and grandson of Mrs. White, displays a copy of a 1910 letter to church leaders which provided the stimulus that resulted in a full-fledged medical school at Loma Linda.

In a week-long series of special services, Loma Linda University students, faculty, employees, and church communities have been studying the life and work of Ellen G. White, whose counsel led to the establishment of this institution.

Arthur L. White, publications secretary of the Ellen G. White Estate, has conducted a number of morning and evening services, taught religion classes, and counseled with students during the Spirit of Prophecy emphasis week which concludes tomorrow.

True Charter of LLU

Pastor White exhibited a letter which he stated was "the true charter of the Loma Linda medical school." The letter, written in 1910 by Ellen G. White, stated that students of the school should have whatever training was necessary "to prove their efficiency as physicians. . . . The medical school at Loma Linda is to be of the highest order."

As a result of this letter, White stated, the development of the school began in earnest.

A new compilation of Ellen G. White statements, entitled Guidelines to Mental Health, will be published in 1967. The volume, which is presently in a preliminary edition, will contain a Seventh-day Adventist philosophy of mental health, White said.

Student Laboratory Named in Honor of Dr. J. Earl Thomas

The Loma Linda University Board of Trustees has voted to name the Risley Hall student physiology laboratory after J. Earl Thomas, MD, professor of physiology and biophysics, School of Medicine.

Dr. Thomas, who served as chairman of the department of physiology and biophysics from 1956 to 1964, was responsible for the remodeling of the lab

and modernization of lab equipment in 1957-58.

Each student group now has available a variety of modern research-grade equipment including a three or four-channel Grass Polygraph, a Dumont oscilloscope, various blood pressure and muscle transducers, and an LLU double-pulse stimulator—an invention of University personnel which stimulates both muscles and nerve, an improvement over commercial models.

Orange Show Tickets

Tickets for the Orange Show March 10-20 may be purchased from the the School of Nursing Alumni Association in the Loma Linda Market during regular hours. Adult tickets are 75c and children's 25c.

Three adult tickets may be purchased for \$2. The gate price for adult tickets is \$1.25. The alumni fund receives 10 per cent of each ticket sold by the Alumni Association.

'Beyond the Best' is Theme Chosen for SM Auxiliary

Six hundred physician wives will attend the convention of the Woman's Auxiliary to the Alumni Association, Loma Linda University School of Medicine, held in Los Angeles March 11-16 in conjunction with the Alumni Postgraduate Convention.

"Beyond the Best for the Doctor's Family" is the theme of this year's activities, according to convention chairman and past Auxiliary president Mrs. LeRoy K. Thompson.

Leading off the Auxiliary program March 12 is the annual "Do Unto Others" benefit titled this year, "How to Succeed in

Medicine Without Really Crying." Scheduled for 7:30 p.m. in Paulson Hall, the medical spoof will provide a comical diversion for physicians and their families.

Sabbath School Aids

Sunday the women are invited to the Southern California Conference Office in Glendale to view a display of Sabbath school visual aids. An artist will demonstrate the coloring of the devices, and painting supplies and work space will be furnished for those who wish to paint their own aids.

Tired feet will characterize Auxiliary members who tour the Los Angeles Home Furnishings Mart Monday. The 13-story, 900,000-square-foot building contains 600 show rooms displaying nearly 2,400 lines of home furnishings. A buffet luncheon in the President's Room of the Mart is scheduled after the tour.

Homecoming Luncheon

Highlighting the activities will be the annual homecoming

Continued on page 4

LLU Dental Wives Plan Program For Women During Convention

While dentists attend meetings at the sixth annual Alumni-Student Convention, dental wives won't be idle.

A two-day program of events for wives begins Thursday morning, March 17. At 8:30 Marie C. Douglass will present "The New Look in Sabbath School Aids."

Later in the morning E. Harold Shryock, MD, professor of anatomy in the School of Medicine, will discuss "Are You Communicating with Your Child?"

The dental wives will meet with the Tri-County Dental Auxiliary to view a community health puppet show after lunch. The afternoon schedule will conclude with a program of advice, "Notes for the Hostess." The group will meet in the

School of Dentistry.

Thursday evening the wives will join their husbands at the awards banquet at the 1001 Ranch and Country Club, Riverside.

Friday morning the ladies will be addressed by Jeanne Vandervoort of the Caroline Leonetti, Ltd., School of Charm, on the topic of "Elegance and You," concluding with a ladies luncheon at the Arrowhead Springs Hotel.

1966-- 'The Year of the Bible'

In honor of the 150th anniversary of the American Bible Society, the US senate approved a resolution asking President Johnson to proclaim 1966 "The Year of the Bible."

Loma Linda University owes its founding and growth to the adoption and practice of the fundamental teachings of Sacred Writ.

At a chapel service in the old Battle Creek College in 1898, a young history teacher by the name of Percy T. Magan, destined to become president of Loma Linda University in due time, announced with pleasure that the American Bible Society had succeeded in publishing the Bible in 300 languages and dialects.

Before he laid aside his academic robe as president of the University, the number had grown to 1,000. Today it stands at 1,232.

Surely this unmatched accomplishment has been possible because the Bible is no ordinary book, but rather one that truly "lives and lifts," and may properly be counted "the most valuable possession that this world affords."

It is fitting that we join in honoring the American Bible Society in this anniversary year.

A Defense Line Formed

Loma Linda University Hospital has joined hospitals throughout the nation in massing forces against mental retardation by testing newborn infants for detection of phenylketonuria (PKU).

Twenty-five states now have mandatory laws for PKU testing, and seven other states recommend testing of newborn infants while still in the hospital. Such testing is aimed at early detection of the inherited metabolic disease which is believed responsible for the brain damage and the resulting lower intellect of one in every 10,000 babies born in the US. California is one of the states with a mandatory law.

Under the direction of Robert F. Chinnock, MD, professor of pediatrics and chairman of the department, School of Medicine, the nutritional and psychological testing and final dietary management of the disease by a qualified team is now available as a service of University Hospital.

Screening programs consist of an initial blood test for infants just before discharge from the hospital, usually on the third day of life, and a follow-up procedure at the first pediatric office visit, at one month of age.

Treatment for infants afflicted with PKU consists of a strict dietary regimen controlled by frequent tests to determine levels of phenylalanine in the blood. An excessive accumulation of phenylalanine in the blood over a period of several months may result in irreparable brain damage. Early dietary treatment is necessary for effectiveness since damage begins with the first protein ingested by a newborn infant.

PKU testing of the entire population is the ultimate goal.

Letters to the Editor

Dear Editor:

In the January 14 issue of SCOPE there was a column on "University Missions Emphasis."

Having not been active on the Loma Linda campus for several years, I can hardly answer the question directly as to whether there is sufficient mission emphasis at the Loma Linda University campus. However, I am aware that there is insufficient response from the graduates of Loma Linda University to fill the constant need for medical personnel in various parts of the world field.

Whatever activities that may be ongoing to emphasize mission needs, I think it would be a healthy exercise to get some open forums or group discussions started that would help to answer the question Why is there not a better response?

No doubt there is more than one reason. These reasons should be viewed not only from the standpoint of the General Conference and calling missions, but also from the standpoint of the medical students

themselves. It may be that some interns and residents have received a call but under the circumstances they were unable to accept or to appreciate the full importance, et cetera.

Some frank views expressed by those who are expected and asked to fill foreign calls might be helpful to the General Conference in putting into operation whatever may be lacking in the present methodology of placing calls and securing mission recruits.

I believe that whatever emphasis is given to mission work should emphasize the challenge of mission work despite handicapping circumstances and unpleasant working conditions at times.

It may be that trying to paint the mission appointment as too rosy has failed to arouse the prospective medical appointees. No matter how rosy the appointment may be painted, it can never be as rosy from the standpoint of convenience to, say, southern California. We enjoy University SCOPE

AMA President Will Address LLU At Noon March 2

Loma Linda University medical students and faculty members will hear American Medical Association President James Z. Appel discuss the question "Can Medicine Remain Free?" March 2 in Burden Hall.

The AMA has traditionally opposed a national plan for medical care on the grounds that government control of the medical profession would follow.

A question and answer period will follow Dr. Appel's comments on the problem.

Dr. Appel, a surgeon and general practitioner from Lancaster, Pennsylvania, received his medical degree from the University of Pennsylvania in 1932.

Three years after he graduated from medical school Dr. Appel became a member of the State Medical Society. He was named a delegate to the American Medical Association in 1945 and a trustee in 1957. He had been vice chairman of the board of trustees since 1962, a position he relinquished when he was chosen president-elect. In June 1965 he became the 120th president of the AMA.

Dr. Appel is a member of the American College of Surgeons and is president of the staff of the Lancaster General Hospital.

Smith Chairs State Dental Meet at LLU

The Southern California State Dental Association Committee on Dental Education met at Loma Linda University February 10.

The chairman of the committee is Charles T. Smith, DDS, dean of Loma Linda University School of Dentistry.

According to Dean Smith, the committee discussed the auxiliary dental education programs (dental technician, dental hygiene, dental assisting) in an effort to establish the best possible use of these curriculums.



—Photo by Ellis R. Rich

MEMBERS OF the Southern California State Dental Association Committee on Dental Education which met at Loma Linda February 10 include (fourth from right) Charles T. Smith, DDS, dean of the School of Dentistry and chairman of the committee; and (starting fourth from left) Godfrey T. Anderson, PhD, University president; Robert E. Cleveland, PhD, vice president for academic affairs; and Hugo M. Kulstad, DDS, associate professor of pedodontics and president of the Southern California State Dental Association.

that helps to keep us in touch with the activities on the LLU campus.

Sincerely,
S. A. Kotz, MD
Medical Secretary
Australasian Division of
Seventh-day Adventists

Ed. note—Although a missionary shortage of any dimensions is to be lamented, it is worth noting that, excluding faculty, 51 per cent of School of Medicine alumni are located outside California—distributed throughout 34 countries.

By contrast, one survey revealed that, on the average, three-fourths of all graduates from the nation's other medical schools locate within a 75-mile radius of their school.

Two Recent Books Reviewed

Book Talk

By Ernest Lloyd

Billy Graham Hits Hard At Moral Ills

WORLD AFLAME (Doubleday, 1965) is the new forthright and hard-hitting book by Billy Graham. It is the expression of deep-seated convictions concerning our world, now aflame with the fires of hate, lawlessness, racial strife, immorality, and war. Dr. Graham minces no words in describing "the morass of modern morality, the inadequacy of modern theology, the idolatry of men and nations worshipping false gods like Technology and Sex which forebodes a climactic end."

Accepts Biblical Prophecies

"WORLD AFLAME fully accepts the Biblical prophecy that the world as we know it will come to an end before a new world of peace and righteousness comes into being." What are the causes of present world conditions? What are the cures? Dr. Graham acknowledges the answers proffered by educators, sociologists, economists, and diplomats of the world. But he does not agree with them. His answers are based on the Biblical philosophy of man, and the prophecies of the Book.

In chapter 20 of WORLD AFLAME he devotes several

pages to the coming of "a world dictator," calling his the "anti-Christ" as mentioned by the Apostle Paul. He quotes from Arnold Toynbee, British historian: "The alternative to the destruction of the human race is a world-wide social fusion of all tribes, nations, civilizations, and religions of man."

May Shake Some Awake

Dr. Graham quotes freely from Revelation 13 and 17 concerning the "beast power" that will rise up to control and dictate to all mankind. WORLD AFLAME will doubtless shake a lot of readers out of their apathy into the reality of the desperate world conditions surrounding us today and show the need for preparation for "the great event toward which the whole creation moves."

Playwright Critic Analyzes Religious Themes

By Alice E. Gregg

The literary world has been debating for thirteen years the meaning, and particularly the religious implications, of WAITING FOR GODOT by Samuel Beckett. Some say it means "waiting for God." Beckett is reported as having said that if he had intended the word Godot to mean God he would have written God.

Recently, a series of lectures given to students of a religious school in New York was published under the name of CONTEMPORARY THEATRE AND THE CHRISTIAN FAITH by Kay M. Baxter (Abingdon Press, 1965), revealing new

slants on the human condition according to Samuel Beckett, and others.

Characters are Symbolic

The story of Godot is about two tramps who find themselves in a lane outside a city. A tree of sorrow, a death tree, is beside them on a mound. The time is evening. They are waiting for Godot, who promises to put everything right in their lives. The tramps are named Vladimir and Estragon.

Mrs. Baxter presents the

Continued on page 7

University SCOPE

THE LOMA LINDA UNIVERSITY NEWSPAPER

Published by Loma Linda University, an educational institution operated by the General Conference of Seventh-day Adventists, as a non-profit organ.

Circulation: 17,000.

Frequency of publication: Alternate Fridays; monthly in July, August.

Offices are located in the University library building.

Regular subscription rate: \$3.00 per year; 10 cents per copy.

EDITOR:

Ben H. Matthews

Editorial Assistant:

Sandra K. Craig

Contributing Editors:

Alice E. Gregg
John Parrish
Irene Schmidt

Alumni News Editors:

Catherine N. Graf, Nursing; Stella C. Peterson, Physical Therapy; Hugh C. Love, DDS, Dentistry; Jennie Stagg Hudson, Nutrition and Dietetics

The University SCOPE accepts advertising that meets the standards of church-affiliated higher education. All advertising will be subject to acceptance by the University SCOPE Advertising Committee. All copy should be submitted the Friday before the issue date. Rate cards are available upon request. Direct communication concerning news, advertising, and subscriptions to Editorial Office, University SCOPE, Loma Linda University, Loma Linda, California 92354. Call 796-0161, extension 283. (Area code 714.)

Photographic News-Views



—Photo by Ellis R. Rich
DIETETIC INTERN Danetta S. Johnson gives a nutrition demonstration with the aid of a student from Bernice L. Squier's grade 3-A class at Loma Linda Union Academy Elementary School. Four other of the 12 dietetic interns are on two-week teaching assignments, conducting nutrition classes in community groups and in schools of the University, Loma Linda Union Academy, and the elementary school.



CLAIRE HODGKINS will be featured violinist of a March 5 concert in Burden Hall at 8 p.m. The artist has appeared with Jascha Heifitz, and with various symphony orchestras throughout the country as well as abroad. The recital here is a bonus program of the Artist and Lecture Series, and admission is on the same basis as regular series programs.



ALONZO L. BAKER, PhD, professor of political science at La Sierra College, will lecture on the topic, "6000 Miles Across Siberia," at Burden Hall, March 12, 8 p.m. Admission to this Artist and Lecture Series program is on a season ticket basis, but remaining seats will be sold on a first come basis.



—Photo by Ellis R. Rich
RECENTLY ELECTED OFFICERS of the intern class of the School of Nutrition and Dietetics are (left to right), Patricia K. Black, social secretary; Bennett D. Chilson, secretary-treasurer; and Sylvia R. Marsh, president.



—Photo by Eugene Hood
NORTON AIR FORCE BASE military and civilian personnel toured the new Loma Linda University Medical Center February 17, guided by Jacques J. Norell (left), resident engineer at the University, and John J. Devlin (second from left), project supervisor. The group included Col. R. H. Mitchell (third from left) and U. L. Barnwell, D. W. Jacobson, Frank H. Parrott, S. F. Berger, N. J. Messinger, E. T. Thompson, Alan Bail, Lisle Senser, C. F. Reeves.



AUSTRIAN SKI CHAMPION Karl Schranz streaks to victory at Sun Valley, Idaho, in a scene from Warren Miller's color film, "The Big Ski Show," to be sponsored by the Dental Students Association in Landis Auditorium, Riverside City College, February 26 at 7:30 p.m.



PHYLLIS B. ACOSTA

Nutritionist Discusses Diet In PKU, Metabolic Diseases

Phyllis B. Acosta, chief nutritionist at the child development clinic, Children's Hospital, Los Angeles, gave an illustrated lecture on "Nutrition and Diet in Metabolic Disorders in Children" at the bimonthly meeting of the Seventh-day Adventist Dietetic Association recently.

Mrs. Acosta was associate professor of the School of Nutrition and Dietetics, 1960-64, and director of dietary service at White Memorial Hospital, 1962-64. She is serving as chief nutritionist for a five-year collaborative study on phenylketonuria (PKU) being sponsored by the US Children's Bureau.

Only Treatment

"The only treatment for several of the metabolic diseases

of children is diet," Mrs. Acosta stated. The low phenylalanine diet is prescribed for the control of PKU, a metabolic disorder in which the amino acid phenylalanine, is not properly utilized by the body, she said.

Usually associated with uncontrolled phenylketonuria are severe mental retardation, hyper-active behavior, convulsive disorders, and eczema. Clinical research has shown that nearly all children placed on a phenylalanine restricted diet before the age of six months have a normal mentality.

Simplified Diet Lists

To simplify the low phenylalanine diet for families and professional persons, Mrs. Acosta has perfected an exchange list in which foods of similar phenylalanine content are listed together and can be interchanged to give variety to the diet.

Other metabolic diseases discussed were galactosemia, leucine-induced hypoglycemia, maple syrup urine disease, and cystinuria.

Hostesses for the evening were Rose Budd, president of the Seventh-day Adventist Dietetic Association, and Lydia M. Sonnenberg, director of dietary service, University Hospital.

Physician Lowers Esoteric Fog Index

Isaac Sanders, MD, instructor in radiology at Loma Linda University School of Medicine, and a physician with a sense of humor, may be leading his profession out of the morass of esoteric lecture terminology in which most medical conventions bog down.

He is moderator of a three-hour "refresher course" in radiology for physicians attending the school's 34th Alumni Post-graduate Convention March 11 to 17.

The course, titled "Practical Radiology for Practically Everybody," includes lectures by other specialists representing southern California medical schools. Among their subjects, listed in a program just published by the convention's alumni association sponsor, are:

—"Arthritis No Longer Gets Me Disjointed," by Dietrich E. Reisch, MD.

—"Congenital Heart Disease No Longer Makes Me Blue," by Dr. Sanders.

—"Short-cuts to Oblivion in Chest Diagnosis," by Geoffrey A. Gardiner, MD.

—"An Upper G.I. Series Ain't No Esophagus Study," by Walter L. Stilson, MD.

—"Every Mediastinal Mass Isn't a Mess," by Erling S. Tobiasen, MD.

Turning the needle on physicians themselves, Ernest J. Braun, MD, will speak on "Attending Physicians I Have Known (or Non-Patient Problems in Radiation Therapy)."

Physicians attending the course or others offered during the convention's first two days receive credit from the American Academy of General Practice.

SM Auxiliary

Continued from page 1

luncheon Tuesday, March 15, at the Embassy Room of the Ambassador Hotel, convention headquarters. Special guest Dale Evans Rogers will discuss "Purposeful Living."

The Rogers have several children of their own and are rearing as their own several adopted children, including an Indian girl. An adopted Korean orphan was killed in a bus accident when she was nine. Miss Evans was recently named Woman of the Year by International Orphans, Inc. She is a recording artist, has composed numerous western songs, and has written six books.

Final Day

The program for the final day of the convention March 16 will include a morning discussion of "Techniques for Achieving Harmony and Cooperation in the Family" by Harrison S. Evans, MD, professor of psychiatry in the School of Medicine. Luncheon entertainment will be provided by the La Sierra College men's glee club directed by senior music major Robert Herr. After lunch Myron Sandler and his group will demonstrate the language of music.

Wednesday evening the women will join their husbands for the convention banquet in the Biltmore Bowl, Biltmore Hotel.

ENT, Ortho., GU, Internal Med. and G.P. NEEDED in this area. Opportunity to establish in prosperous La Habra, Orange County area. Modern suites including x-ray facilities to be completed July 66. Close to hospitals. Design your own suite. Suites available for association or partnership-type practice.

M. M. Gladstone, M.D.
601 E. Whittier Blvd.,
Suite 6
La Habra, Calif. (213)
694-1038

OFFICE LOCATION

Fully Equipped

For General Practitioner—Opportunity to build in area that badly needs coverage. Hospital facilities excellent. Medical community receptive and of highest calibre. Office layout ideal, with X-ray, established 15 years. Reasonable rent or lease. Call Harold Winn, 10 West Colton Ave., Redlands, California. Phone 793-2804.

FOR SALE

3 BE hillside view home. Privacy. Overlooks valley and medical center. Low interest FHA terms. IMMEDIATE OCCUPANCY, 2230 N. Spinnaker, Santa Ana, Calif. or Ph. 714-638-5495. Collect.

DOCTOR NEEDED

Excellent opportunity. Physician's suite available for lease in new professional building next to dentist. In Edgemont, California, area near March Air Force Base, east of Riverside.

Contact
Bob Krauss
22810 Allesandro
Edgemont, California
(714) 653-2191

Loma Linda Realty & Insurance

11112 Anderson St.
Loma Linda, Calif.
Phone: 796-0242

FOR SALE:

3 BDRM. Home—\$15,000—will trade for Glendale property.

2 BDRM. Home—1 Car Garage. Chain link fence — Only \$7,950.

2 BDRM. & Den — Home — on San Mateo St., Loma Linda — \$10,500. Low Down. Will Trade.

Choice 8 Acres in Loma Linda. Water available — \$79,500. Terms.

FOR RENT:

3 BDRM. Homes — \$65.00 & up.

2 BDRM. Homes — \$65.00 & up.

1 BDRM. Apts. — \$45.00 & up.

List with us for fast Action

From the desert to the sea,
Let your financial partner be/
Security First National Bank.

Your tones are so rich, Walton.



Our message:

Banking at Security is the sheik thing to do. Give us a chance to figure in your future. With Security Bank as your financial partner, you'll hum all the way to the bank.

Make your financial partner
SECURITY FIRST NATIONAL BANK

MEMBER FEDERAL DEPOSIT INSURANCE CORPORATION

Moving Across the Street or Across the Nation?



THE LOMA LINDA WAREHOUSE

TURNER MOVING & STORAGE

The moving company with 18 years of service to conferences, institutions and church members.

Box 226, St. Helena
Phone WO 3-2701

Box 201, Loma Linda
Phone PY 6-0228



CARL SUNDIN, director of University Placement Service, checks files with secretary Maxine E. Leonhardt in their newly-decorated office located at the southern end of Burden Hall. Recent visitors were given a tour of the offices, presented with mementos, and supplied with refreshments.

University Placement

Direct inquiries to University Placement Service
Loma Linda University, Loma Linda, Calif. 92354

Opportunities, N. America

Dental Hygienist

ALASKA
FAIRBANKS: Hygienist needed to join established group of dentists

Dentists, General Practice

ARKANSAS
BOONEVILLE: Construction just completed on medical building for three physicians and separate suite designed especially for dentist. Currently only one dentist for 15,000 population

CALIFORNIA
ARVIN: Near Bakersfield, where church and school are available. Full-time dentist has moved, leaving only one part-time dentist

BAKERSFIELD: Two-operator, long established practice for sale. Appointments made through July. Assistant staying on. Present dentist retiring

BAKERSFIELD: Active practice in area adjoining civic center. Bungalow office with opportunity to buy building

FONTANA: Leaving general practice to specialize. Office for sale with equipment. Gross has been high

HOLLISTER: Town of 7,000. Good dental practice for sale. Another LLU graduate dentist will do all he can to assist

MCFARLAND: Present dentist must enter military service March 25. Two-chair office in small farming community, fully equipped. Another dentist could go right to work

MODESTO: MD building suite of offices for several physicians and would also like to have one dentist. Office built to suit

COLORADO
CORTEZ: Three dentists are all booked months ahead and all overworked. Beautiful area of Colorado. Active SDA church with two-teacher school

MISSOURI
KIRKSVILLE: Acute need for dentist. Appointments at present must be made at least month in advance

MONTANA
ELY: Only one dentist in Ely. Other dentist passed away leaving a real need. Many residents drive hundreds of miles for dental care. Community is anxious

NEW JERSEY
CAMDEN: Active dental practice established ten years. Will stay on to facilitate transfer of practice

ENGLEWOOD: Unusual opportunity. Ground floor, two-operator office. Share lovely colonial reception room

FLEMINGTON: New building will be divided to suit. Ideal country living. Near Morristown

LAKEWOOD: Medical complex being enlarged. Now houses five MD specialists and an oral surgeon. General dentist wanted

MIDDLETOWN: New professional building, central air conditioning, excellent location

MONTCLAIR: Retiring dentist offers fully equipped two-chair office. Ideal for general dentistry or oral surgery

NEWARK-IRVINGTON AREA: Completely equipped two-operator office. Reception room shared with established MD

SOMERDALE-STRATFORD: Offices ready for 1966 occupancy in shopping center

NORTH CAROLINA
BLADENBORO: No dentist in this community of 5,000, and there hasn't been for many years. Only two dentists in county with population of 28,000

Dr. W. P. Corr Chairs Specialty Meeting

A Loma Linda University faculty member directed the American College of Physicians regional meeting for internal medicine specialists in southern California, held in Santa Barbara February 18-20.

W. Philip Corr, Sr., MD, clinical professor of medicine in the School of Medicine, is the American College of Physicians governor for southern California.

Program for the three-day meet included scientific sessions, informal luncheons, and an evening banquet. New advances in heart disease, endocrine disorders, and diseases involving metabolism and the gastrointestinal system were presented by lecturers and in workshops.

Guests included Irving S. Wright, MD, ACP president-elect and professor of clinical medicine at Cornell Medical College, New York.

HAVANA: GP needed to serve rural area of 10,000. Training in internal medicine, obstetrics or pediatrics preferred. New clinic building planned

ISLAND LAKE: Trade area of 17,700. No physician. New eight-room office available in shopping center, rent free for one year

LANARK: Town had two active physicians until recently. Only one at present and he is in ill health

KENTUCKY
BRANDENBURG: Equipped clinic, small hospital and residence available. Urgent need for replacement of physician who plans to retire

MISSOURI
HILLSBORO: Thirty-five miles from downtown St. Louis. No physicians at present

MARCELINE: Searching for another GP. New hospital

MOUNTAIN GROVE: Only one MD at present and he is 75 years of age. Office space is available

POTOSI: Population of 3,500 with a new county hospital

NEW JERSEY
FLORHAM PARK: General practice in residential area. Present MD leaving to specialize. Near SDA church. Excellent opportunity

OHIO
AMSTERDAM: Vacancy created by death of only physician. SDA church 22 miles. Area population 7,000

CAREY: Stable community with steady growth rate can assure busy practice from first day. Community is prepared to build suitable office when physician is secured

CLARKSBURG: Area population 2,500. Great need for GP. Former physician left for advanced study

DUNKIRK: Town without medical care due to death of physician. Established practice, office and equipment for sale

GREENFIELD: Urgent! Busy general practice physician needs assistance now. Established practice and office fully equipped. Local physicians will help

OKLAHOMA
LAMONT: Community of 2,000 has medical facility ready to rent
WILBURTON: Excellent opportunity in eastern Oklahoma community which has new Hill-Burton hospital. Only one MD in town

OREGON
GLADSTONE: Need for two physicians. 5,000 population and no MD's. SDA church of 250 members. Church school being constructed this spring. Office space available. Ten miles to Portland Sanitarium

TEXAS
CLAUDE: Opportunity for general practitioner. At present only one retired physician. Office space in new clinic which is modern and well equipped
FLOYDADA: One physician will be leaving this town of 4,250. Office in hospital is all equipped and personnel furnished

LOS FRESNOS: Six-bed hospital-clinic in need of physician to operate it. Beach nearby

Physicians, Specialists

EENT: Lompoc, California. This town of 3,500 desperately understaffed with physicians and in need of this specialist

ENT: Oak Park, Illinois. Rapidly growing community of 15,000. Modern, new office building

INTERNIST: Bakersfield, California. Internist needed for five-man group of LLU graduates with opportunity of partnership

OPHTHALMOLOGIST: Sacramento, California. Huge medical complex with 15 medical suites available

ORTHOPEDIST: Sacramento, California. A medical complex opening in July, 1966 with 15 suites available

SURGEON: Oak Park, Illinois. Rapidly growing community of 15,000. Modern new office building



CLAUDE E. RANDOLPH, SM'68, associate secretary of the General Conference of Seventh-day Adventists, and his secretary, Florence B. Hanson, welcomed some 400 visitors to their General Conference placement office in Burden Hall during a recent open house.

Personnel Seeking Positions

Business Managers

1. Wishes position as clinic manager in southern California. Experienced

2. Interested in locating in the West. Has MBA in hospital administration and several years' experience

Physicians, General Practice

1. Permanently returning missionary interested in western states

Physicians, Locum Tenens

1. Three-week locum tenens desired about March 22 in southern California or Bay area

2. Wishes two-week locum tenens between April 20 and June 30, preferably in Los Angeles area, but would consider other southern California location. Has completed residency in internal medicine, but willing to fill in for GP also

Physicians, Specialists

1. Permanently returning missionary has boards in both general and thoracic surgery and seeks placement

Secretary-Receptionists

1. Part-time position desired as medical receptionist in area surrounding Loma Linda. Experienced

3. Wishes either general or medical secretarial position. Experienced in medical terminology. Available for area surrounding Loma Linda

EQUIPMENT NEEDED

Need for good equipment for new hospital in South Taiwan (Formosa): X-ray, operating table, operating light, surgical light, surgical instruments, sterilizer, surgical autoclave, examining tables, instrument cabinets, portable lights, beds, bed pans, etc. Will supply tax deductible receipt. Contact Ernest Christensen, MD, 11231 San Juan, Loma Linda, phone, 796-0305, or 796-0161, Ext. 541.

GENERAL CONFERENCE MEDICAL DEPARTMENT OVERSEAS CALLS

BANDUNG MISSION HOSPITAL, Java — An internist is needed in this new 150-bed institution which has been in operation for four or five years at its present location. Bandung is at an elevation of 2,300 feet, which makes it a pleasant place in which to live. No board is required for hospital practice.

GUAM — The call here is for a dentist to operate an office in an established clinic

MANILA SANITARIUM AND HOSPITAL, Philippine Islands — This 128-bed hospital located in Manila, having elementary through senior college school facilities, and a tropical climate, is in need of an internist and surgeon

PENANG SANITARIUM, Malaysia — This 100-bed hospital is another of our fine institutions in one of the best areas in the entire Far East. It is in urgent need of a surgeon and general practitioner with Canadian Boards

PUSAN SANITARIUM AND HOSPITAL, Korea — A very active general practice is carried on in this 30-bed hospital. A general practitioner who is experienced in surgery is very urgently needed in 1966

SAIGON ADVENTIST HOSPITAL, Vietnam — The call in this 38-bed hospital is for a general practitioner with surgical ability or a board certified or eligible surgeon. Very urgent

SEOUL SANITARIUM AND HOSPITAL, Korea — This 110-bed hospital is located in a temperate climate. Church school facilities are available. Replacement is needed here for a dentist in a practice in the hospital

YOUNGBERG MEMORIAL HOSPITAL, Singapore — This 67-bed hospital located on the tropical island of Singapore at the headquarters of the Far Eastern Division, urgently needs an internist with Canadian Boards in 1966

INTER-AMERICAN DIVISION

ANDREWS MEMORIAL HOSPITAL, Jamaica — The Canadian Boards are necessary to practice in this 51-bed institution. The need here is for a board qualified or eligible surgeon for a full term appointment and a relief general practitioner

ARUBA — A self-supporting general practitioner is needed on the island of Aruba

BELLA VISTA HOSPITAL, Puerto Rico — This 80-bed hospital contracts medical care for commercial firms. The call is for a dietitian

MONTEMORELOS HOSPITAL, Mexico — This is a 50-bed hospital located in the orange capital of the nation and surrounded by beautiful, rugged mountains. The climate is temperate, occasionally freezing. The call here is for a relief doctor for two to three months.

SAN JUAN, Puerto Rico — There is an opening for a self-supporting general practitioner

SAN CRISTOBAL, Guatemala — In the new medical work in Guatemala a physician is needed as director

MIDDLE EAST DIVISION

BENGHAZI ADVENTIST HOSPITAL, Libya — This 30-bed hospital is to be replaced by a building now being constructed. The need here is for a gynecologist-obstetrician and a dietitian

NORTHERN EUROPEAN DIVISION

EMPRESS ZAUDITU MEMORIAL HOSPITAL, Ethiopia — This 87-bed facility in Addis Ababa needs a dietitian by May

ETHIOPIA — A call comes from the Ethiopian Union Mission for a nurse for one of the medical institutions. The union has four hospitals and twelve clinics and dispensaries

GIMBIE HOSPITAL, Ethiopia — This is a 52-bed hospital. The need here is for a general practitioner

KWAHU HOSPITAL, Ghana — The Kwahu Hospital is an 80-bed facility owned by the government but operated by Seventh-day Adventists. It is located in the very beautiful mountainous district of Ghana, an extremely pleasant place in which to live. A well-qualified general practitioner is needed at this very busy hospital. No boards are required

SOUTHERN ASIA DIVISION
JULLUNDUR HOSPITAL, India — For the new hospital of 50 beds, which is being planned, the call is for a medical director and a surgeon

KARACHI HOSPITAL, West Pakistan — This well-equipped 120-bed hospital, which is metropolitan, is needing a gynecologist-obstetrician and a dietitian

SCHER MEMORIAL HOSPITAL, Nepal — This 20-bed hospital is in the foothills of the Himalayas. This is a very colorful and challenging assignment. The need is for a general practitioner to act as medical director of the hospital

RANCHI HOSPITAL, India — A lady gynecologist-obstetrician, a medical director-surgeon, and a nurse are needed in this 50-bed hospital which serves a large rural area

TRANS-AFRICA DIVISION
MALAMULO HOSPITAL AND LEPROSARIUM, Malawi — This 163-bed institution ministering to a large number of lepers has need of two nurses, one by December 1966

OFFICE SPACE

Office space available in fast-growing community. Two new hospitals opened in 1965. Community hospital in adjoining block. Need for Internists, Pediatrician, General Practitioners.

W. W. Warcham, DDS
108 West 8th Street
Corona, Calif.
714 737-1092

Griggs Lot Parkers Must Have Permit

The administrative parking lot behind Griggs Hall is considerably congested due to cars without permits parking there. This lot is only for the administrators, faculty, and staff of Griggs Hall and Magan Hall. It is suggested that students now parking there use the market parking lot until the pipeline work is completed around the School of Dentistry.

CALENDAR OF FUTURE EVENTS

Friday, February 25

Sunset: 5:42 p.m.

LINDA HALL—Academy MV, Loma Linda Union Academy band concert: 7:30 p.m.

HILL CHURCH—Academy MV, academy band sacred concert: 7:30 p.m.

UNIVERSITY CHURCH—Arthur L. White, "The Story of Two Men": 7:30 p.m.

Saturday, February 26

UNIVERSITY CHURCH—Hour of worship, Arthur L. White, "A Prophet Among You": 8 and 10:55 a.m.

HILL CHURCH—Hour of worship, A. Graham Maxwell, PhD, "We Worship What We Know": 8:10 and 10:55 a.m.

PALM CANYON—Philoma Club outing for single adults.

KATE LINDSAY HALL—Campus Fellowship, "Principles of Medical Evangelism": 2:30 p.m.

UNIVERSITY CHURCH—Roundtable discussion, "Questions Relating to E. G. White": 3 p.m.

LANDIS AUDITORIUM, RIVERSIDE CITY COLLEGE—Dental Students Association benefit film, "The Big Ski Show": 7:30 p.m.

BURDEN HALL—School of Nursing junior class benefit, "Hoboken to Hollywood": 8 p.m.

Monday, February 28

UNIVERSITY CHURCH—Convocation, Jack W. Provonsha, MD: 8 a.m.

BURDEN HALL—University Forum for students of Graduate School, School of Physical Therapy, School of Nutrition and Dietetics and Occupational Therapy Curriculum: 4 p.m.

Tuesday, March 1

KATE LINDSAY HALL—University Forum for sophomore and senior students of the School of Nursing, and students of the Medical Record Administration Curriculum: 3:30 p.m.

Wednesday, March 2

BURDEN HALL—James Z. Appel, AMA president, "Can Medicine Remain Free?": 12 noon.

OLIVET CHAPEL, LOS ANGELES—University Forum for School of Medicine juniors, students in the School of Medical Technology and Radiologic Technology Curriculum: 4:30 p.m.

CASA LOMA ROOM OF COMMONS AT UNIVERSITY OF REDLANDS—Student American Medical Association buffet, co-sponsored by UR pre-medical students and Lockheed Research Society, student tickets \$2, advance reservations necessary, James Z. Appel, speaker: 6:30 p.m.

HILL CHURCH—Midweek service, A. Graham Maxwell, PhD, begins a series on the Book of Romans: 7:30 p.m.

UNIVERSITY CHURCH—"Insights" series, "More than Legend," film,

Weeks Completes PhD Requirements

Loma Linda University Vice President for Public Relations and Development Howard B. Weeks has completed all requirements for the doctor of philosophy degree in speech at Michigan State University.

In addition to the major field of study, his program included minors in sociology and mass communication.

He passed the final oral examination on the dissertation February 3. The degree will be conferred at the university's winter term commencement March 13.

The title of his dissertation is "A Historical Study of Public Evangelism in the Seventh-day Adventist Church: 1900-1966."

LLU Alumni to Sing At White Memorial

Loma Linda University alumni who sing are invited to join the White Memorial Church choir March 12, during the Alumni Postgraduate Convention.

Physicians, nurses, and members of their families are all welcome, according to John T. Hamilton, minister of music at the church.

Rehearsal will be at 9:30 a.m. Saturday, March 12, in the choir room of the church.

discussion by John W. Osborn on "What Makes Christianity Different From Other Religions?": 7:30 p.m.

Thursday, March 3

RISLEY HALL AMPHITHEATRE—Pharmacology seminar, K. Heinz Ginzel, "On the Pharmacology of Centrally-Acting Muscle Relaxants": 12:10 p.m.

Friday, March 4

HILL CHURCH—Academy MV, Harry Garlick, Pacific Union Conference War Service Department, "Adventist Boys and Vietnam": 7:30 p.m.

Saturday, March 5

NEWBURY PARK ACADEMY—Alumni day.

HILL CHURCH—Hour of worship, Pastor Ron Wisbey, "Man, What a Chance!": 8:10 and 10:55 a.m.

UNIVERSITY CHURCH—Hour of worship, Pastor Milton Lee, evangelist in Far Eastern Division: 8 and 10:55 a.m.

BURDEN HALL—Claire Hodgkins violin concert, Artist and Lecture bonus: 8 p.m.

COLLEGE HALL, LA SIERRA COLLEGE—14th annual gymkana program, "The Emperor's New Clothes": 8 p.m.

SAN PASQUAL ACADEMY—Annual talent program, 8 p.m.

Monday, March 7

UNIVERSITY—Convocation, 8 p.m.

Wednesday, March 9

UNIVERSITY CHURCH—"Insights" series, "No Place to Hide" film, discussion led by Howard B. Weeks, "What Hope Is There for the Future in View of Increasing Threats of Nuclear War?": 7:30 p.m.

HILL CHURCH—Midweek service, A. Graham Maxwell, PhD, series on the Book of Romans: 7:30 p.m.

Thursday, March 10

RISLEY HALL AMPHITHEATRE—Physiology seminar, L. L. Langley, PhD, National Heart Institute, Bethesda, Maryland, "Mechanism of Salvation": 12:10 p.m.

CLASSIFIED

Term papers, theses, typed; illustrations done. Charge by page. Medical, dental and graduate students. Will pick up copy. Call Betty Hallman, 792-1377.

General Practitioner's office and all equipment available immediately. Glendale area. Equipment must be sold (213) 241-2027 or 244-1825.

House for rent—2 BR. Near school, quiet street. Contact LLU Corporation 796-0161, Ext. 511.

For Sale: Bausch and Lomb Binocular microscope, 4 objectives, Ungraduated mechanical stage—\$350.00. Call: Mrs. Baer, 849-3087 in Burbank, Calif.

BOOKKEEPING SERVICE, billing, statements. Mrs. Betty Brooks, 796-9242.

Now—you can stay out of the used car business.

You went into it when you bought your last new car. It's not that we mind the competition. It's just that as professionals, we're better at it than you are. We can buy new cars for less—and sell used cars for more. That's one reason why our monthly lease payments are less than the usual purchase payments—you pay only for the part you use, not for an equity.

We'll be happy to help get you out of the used car business. We're sure you'll agree you can make more money elsewhere.

For a detailed analysis and lease proposal, simply contact our office.

Purchase and Lease-back Plans / New Equipment Leasing / New Car Leasing / Low Cost Professional Loans / Tax Shelter Investments



BOB NEW, INC.
736 North Glendale Avenue
Glendale 6, California
Citrus 6-1781 or Chapman 5-7716



STORE HOURS: SUN. - WED. 8 - 7; THURSDAY 8 - 8; FRIDAY 8 - 3



VEGE BURGER

20 oz. Can

59c

\$6.69 per case of 12

DINNER CUTS



LINKETTS



69¢

\$6.98 per Case

Bar-Hee — Ball of Honey

DATES

2 lb. box **98c**

Reg. \$1.89

CHILI BEANS

Can **35c**

GRAVY QUICK

5 for **\$1.00**

OLIVES



Green Ripe

Mammoth

4 cans for **89c**

Case of 24 \$4.50

LARGE OLIVES

5 cans

\$1.00

Loma Linda Market

Quality Products at Reasonable Prices

University Forums Scheduled Again

University Forums for three groups of Loma Linda University students have been scheduled for next week, according to Robert E. Cleveland, PhD, vice president for academic affairs.

Students in the Graduate School, School of Nutrition and Dietetics, School of Physical Therapy, and Occupational Therapy Curriculum will meet in Burden Hall Monday, February 28, at 4 p.m.

Senior and sophomore nursing students and students in the Medical Record Administration Curriculum will attend a forum in the Kate Lindsay Hall worship room at 3:30 p.m., Tuesday, March 1.

The University Forum for students in the School of Medical Technology and Radiologic Technology Curriculum and junior nursing students is set for Wednesday, March 2, at 4:30 p.m. in Olivet Chapel, Los Angeles.

Forums scheduled for March 7, 8, and 10 for medical, dental, and dental hygiene students have been canceled, the deans say. The general forums will be replaced by student-faculty councils with class representatives.

MALE NURSE

MALE NURSE, RN, for administrative position in a growing ASI hospital. Duties will include planning and co-ordination with various hospital programs. Attractive position to good leader. New church and ten grade school in community. Please contact Administrator, Shawnee Mission Hospital, Shawnee Mission, Kansas.

EQUIPMENT NEEDED

Need for good equipment for new hospital in South Taiwan (Formosa): X-ray, operating table, operating light, surgical light, sterilizer, surgical autoclave, examining tables, instrument cabinets, portable lights, beds, bed pans, etc. Will supply tax deductible receipt. Contact Ernest Christensen, MD, 11231 San Juan, Loma Linda, phone, 796-0305, or 796-0161, Ext. 541.

MAYBERRY REALTY

24887 Taylor Street, Loma Linda
New Office Across from Motel
Phone — 796-9590

KENNETH E. MAYBERRY — Broker
ALBERT EVANS — Salesman - Notary

HOMES

Grand Terrace — 4-bedroom, large fenced yard, lot 105' x 135', fireplace, 2 baths. \$17,500.
Redlands — 4-bedroom, FHA financing. \$19,825.
Loma Linda — 4-bedroom with fine view overlooking LLU. \$35,000.
Other listings from 1-bedroom at \$8,000 to 5-bedroom with pool and view at \$65,000.

RENTALS

Furnished plush apartments — 1-bedroom, pool. \$115.
Unfurnished 1-bedroom from \$60 up.
Unfurnished 2-bedroom. \$75 up to \$125.
Unfurnished 3-bedroom, 2 baths. \$135.

INCOME PROPERTY

Duplexes — Triplexes — Fourplexes — 12 units. Contact us for further information.
Also 2 houses on one lot near University. Good income, live in one, rent one.

ORANGE GROVES

2 acre grove, approximately 2 miles to LLU. \$17,500.
Producing grove on Barton Road, good building site.
5 acre grove. \$9,500 per acre.
4½ acre tract with well in Reche Canyon. \$12,500.

Book Talk

Continued from page 2

symbols. "If you prefer to identify the tramps through symbols stemming from Jung's psychology, you will note that Vladimir wears a hat, which does not become him, i.e., is concerned with uncomfortable thought, and Estragon wears boots which don't fit him, i.e., is concerned with uncomfortable feeling.

"If you want to identify them in terms of the religious life you say that Vladimir is the contemplative, the listener, the seeker, the one expecting messages, the ascetic, the one who suppresses his physical side while Gogo is the active, the nonreflective, the one who tries to wipe the tears from the eyes of sufferers, who must eat when he is hungry, and who bellows when he is hurt. Neither can do without the other."

Roles Exchange

Finally two travelers come by—"a coarse blustering brute called Pozzo, finely dressed and obviously pampered, and his attendant, a starveling object called Lucky." Pozzo is tired of Lucky and is taking him to Saint Sauveur to sell him.

He has him perform for the tramps, but all Lucky can do is the dance of death. Lucky appears to die. Pozzo gets him to his feet and they go off to market. When they reappear later Pozzo is blind, Lucky goes back to the tree of death, finally rises, and takes Pozzo back to the city.

A second messenger arrives to tell the tramps that Godot cannot come that evening. As Gogo says: "Nothing happens, no one comes, no one goes, it's awful."

Synopsis

The play's synopsis, according to Mrs. Baxter, is: "Came down, was crucified, dead, buried, descended into hell and the third day rose, and ascended," or the experience of the story of the Passion.

"The tramps together are the spirit of man," she says. "The spirit is spasmodically attentive and expectant of a Saviour. The Saviour comes as it was foretold '... without form or comeliness,' 'despised and rejected,' 'despised and we esteemed him not.' He comes carrying Pozzo's rubbishy gear. . . . The biblical description of the Suffering Servant (Isa. 53) fits in every detail the figure of Lucky, this servant of the gross

Pastor Card New Associate Minister

Pastor Eddie C. Card began his duties as associate pastor of the Loma Linda Hill Seventh-day Adventist Church on February 1. For the past three years he has been pastor of the Clairemont Seventh-day Adventist Church, near San Diego.



E. C. Card

Pastor Card attended Southwestern Union College at Keene, Texas, and La Sierra College, where he received his bachelor of arts degree. He was awarded his master of arts at Potomac University in Washington, DC.

Mrs. Card, the former Jane Wright, also attended Southwestern Junior College. Their two sons, Michael and Lynn, are attending Loma Linda Academy Elementary School. The Cards now reside in Loma Linda.

Pozzo who represents all mankind."

How you feel toward Lucky is comparable to how mankind felt toward Christ—if it isn't too frightening to compare.

WAITING FOR GODOT is only one of the plays Mrs. Baxter reacts to in the book. She also looks at plays that raise crucial issues about integrity, lack of communication, death — all three symptoms of our contemporary human illness.

La Sierra Gymkana Set for March 5

"The Emperor's New Clothes" is the title of the 14th annual gymkana program set for March 5 at La Sierra College.

The production will feature gymnastic skill, comedy, and the music of the Chamber Singers.

Admission is \$1 for adults, \$.50 for children under 12. Tickets will be available the evening of the performance. The program is scheduled for 8 p.m. in College Hall.

BIRTHS

NOBUHARA, Angela Karen was born February 18 to Irene C. Nobuhara, and Timothy K. Nobuhara, both nurses at University Hospital.

Psychiatry Faculty Assist SS Courses

Three members of the School of Medicine department of psychiatry participated in a three-county Sabbath School Teacher Training Course sponsored by the Southeastern California Conference.

Clarence E. Carnahan, Jr., MD, assistant professor of psychiatry, and Harrison S. Evans, MD, professor and chairman of the department of psychiatry, both discussed "Individuals—Their Characteristics and Needs."

Instructor in psychiatry William D. Bolander, MD, spoke on "Non-Verbal Communication."

The course was taught the afternoons of January 15, 22, and 29 at the Arlington, Santa Ana, and North Park (San Diego County) churches.



Brewer's Chevron

24532 Central Ave.
Loma Linda 796-0623

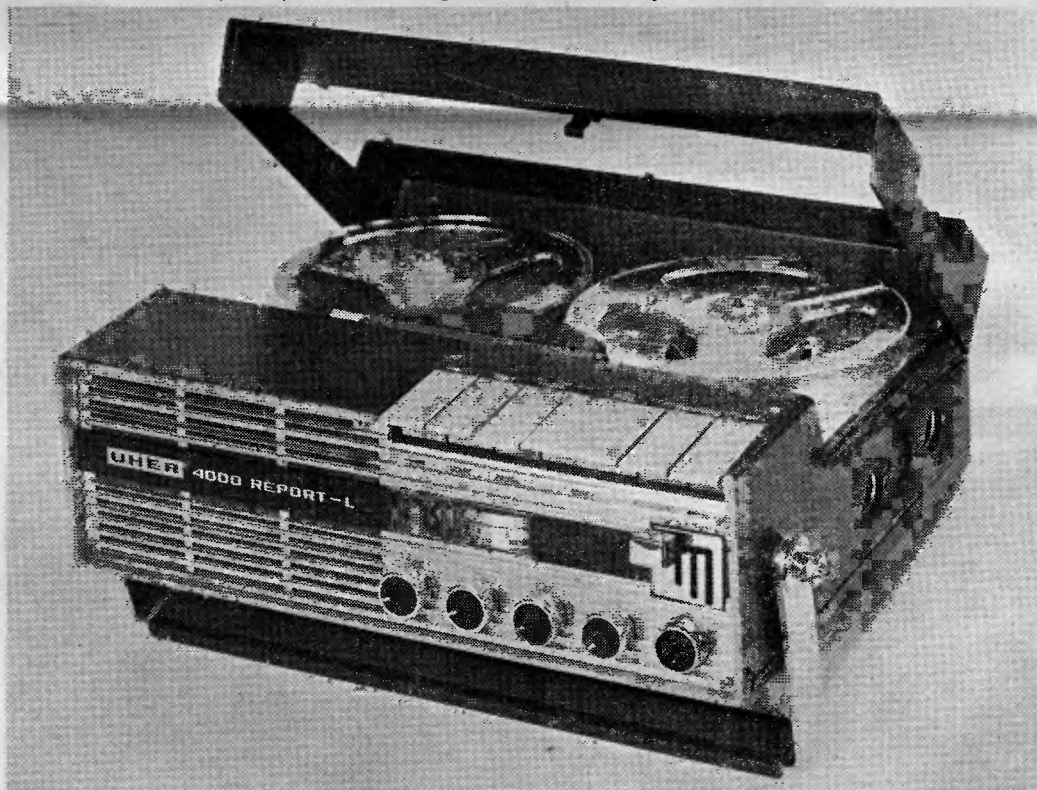
First Class Garage Service. Experienced Factory Mechanics. Battery Service. Pickup and Delivery.

FORDS AND CHEVROLETS AT FLEET PRICES

UHER 4000-L

Combines Old World Craftsmanship with Space Age Technology and Design

A professional portable Tape Recorder



Independent of time and place, the UHER 4000 Series is a valuable assistant to many people: to Space Technicians for missile tracking; to Radio Stations for interviews and "on-the-spot" recording; to Businessmen for listening to or recording important data while driving; to Doctors and Lawyers for lectures; to Outdoorsmen for recording the sounds of nature; to Salesmen for reviewing their sales presentations; to Missionaries for Bible instruction; in fact, its versatility is limited only by your imagination.

SPECIFICATIONS

Tape Speeds	15/16, 1 7/8, 3 3/4, and 7 1/2 i.p.s.	Heads	Standard half-track Erase and Record/Play
Maximum Reel Size	5 inches	Outputs	External Speaker/Earphone
Frequency Response	40- 4,500 cps @ 15/16 i.p.s. 40-10,000 cps @ 1 7/8 i.p.s. 40-17,000 cps @ 3 3/4 i.p.s. 40-20,000 cps @ 7 1/2 i.p.s.	Inputs	Remote Control, Microphone, Power.
± 2db at all speeds		Output Power	1 watt (push-pull output stage)
Signal to Noise Ratio	55 db	Power Supply	Rechargeable Dryfit Storage Battery or five nickel-cadmium batteries or Power Unit and Battery Charger.
Wow and Flutter	± 0.15% r.m.s. @ 7 1/2 i.p.s. (audible frequencies only)	Size	10 1/2 x 8 1/2 x 3 1/4 inches
		Weight	7 lbs. 6 oz. (less battery)

THE RECOMMENDED BASIC RECORDING UNIT CONSISTS OF THE UHER 4000 REPORT L WITH REMOTE CONTROL DYNAMIC MICROPHONE, LEATHER CASE, AC POWER UNIT /BATTERY CHARGER, AND RECHARGEABLE BATTERY.

Send for a

Complete brochure:

UNIVERSITY SUPPLY

11147 Anderson Street
Loma Linda, Calif. 92354

NEW FILM SERIES

EVOLUTION and the BIBLE

From one of our eminent scientists, Professor Harold Clark, comes an illustrated lecture with tape recording, in defense of creationism and the Deluge.

With a myriad of voices all about, clamoring for acceptance, without question, of the evolutionary theory, it is high time that there be made available an adequate presentation of the Creationist doctrine of the beginnings of world history and the devastating Flood that overwhelmed the earth and altered its surface features.

TITLES (8 filmstrips with tape recordings)

1. The Thunder of His Power
2. In the Beginning
3. The Dominion Lost and Restored
4. In His Image
5. The Flood Story and Modern Science
6. The Story of the Fossils
7. The Great Catastrophe
8. Worship the Creator

- Scientific Approach to the Scriptures
- The Product of a Lifetime of Study
- Adequate Illustrations in Living Color
- A Must for Ministers and Laymen
- Tape Recordings Present Subject in Layman's Language
- Excellent Follow-up for Illustrated Bible Studies
- For Youth in Church Schools, Academies, and Colleges

BE QUALIFIED TO DEFEND THE BIBLICAL CONCEPT OF CREATION AND THE FLOOD

ORDER FROM YOUR BOOK AND BIBLE HOUSE

Please send me the filmstrips and tape recordings on EVOLUTION AND THE BIBLE as indicated below:

Complete set of 8 single-frame filmstrips and narrations \$59.50

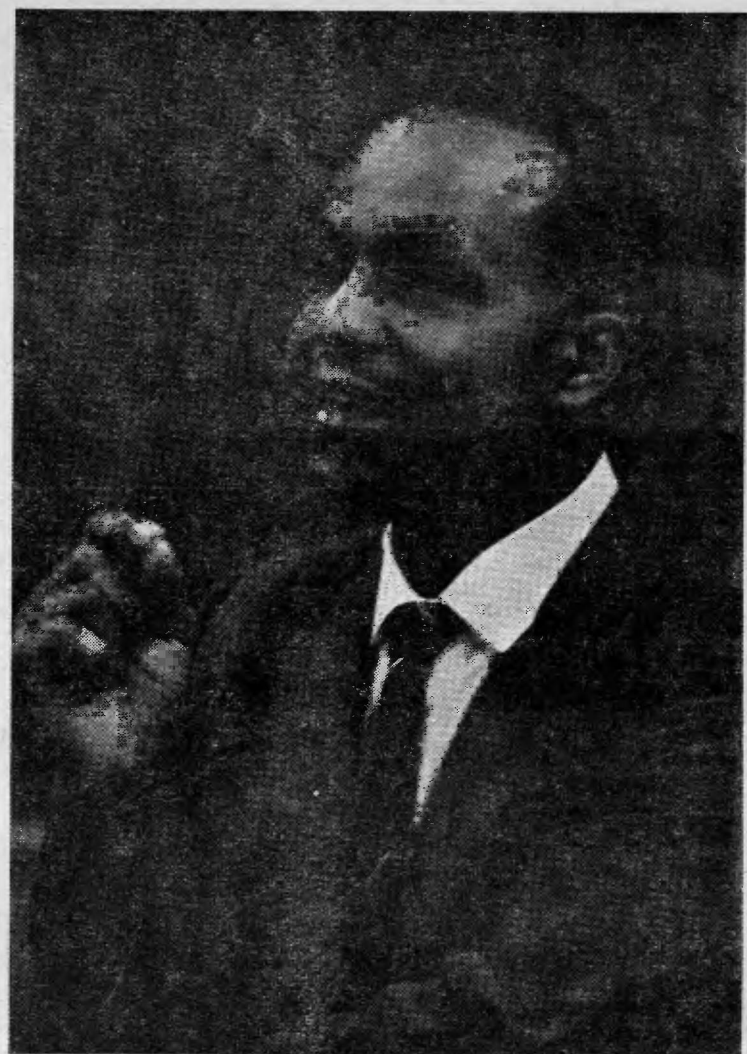
Complete set of 8 double-frame filmstrips and narrations \$67.75

Prices slightly higher in Canada. Add sales tax where necessary.

Name _____

Street _____

City _____ State _____ Zip _____



—Photo by Walter H. Emori
LLOYD A. DAYES, MD, answers a question about neurosurgery during a special review session with SM'66 class members in preparation for their part II National Board Examinations to be taken April 19, 20.

SM Class Organizes Reviews For April Board Examinations

Students of the School of Medicine class of '66 are meeting three times a week in the graduate school building for special evening sessions with instructors from their school.

The two-hour sessions were organized by Thomas S. Mitchell, vice president of the class, in order to provide opportunity for members of the class to be reviewed on certain subjects by School of Medicine instructors prior to the part II National Board Examinations April 19, 20.

Instructors appearing in order to assist the group include Lloyd A. Dayes, MD, instructor in neurosurgery; G. Gordon Hadley, MD, associate professor of pathology and associate dean for student affairs of the School of Medicine; Varner J. Johns, Jr., MD, professor of medicine and chairman of the department; Morton M. Woolley, MD, associate professor of surgery; Jerald C. Nelson, MD, assistant professor of medicine; Isaac Sanders, MD, assistant professor of radiology; Ellsworth E. Wareham, MD, professor of surgery and co-chairman of the department; and Robert L. Wyckoff, MD, assistant professor of legal medicine.

Auxiliary Benefit Parody March 12

"How to Succeed in Medicine Without Really Crying" will be performed March 12 as the "Do Unto Others" benefit of the Woman's Auxiliary to the Alumni Association, Loma Linda University School of Medicine.

The medical spoof will star Auxiliary members. Presented annually during the Alumni Postgraduate Convention, the program benefits Auxiliary members and families in financial need.

Tickets are available at the Auxiliary office, 1832 East Michigan Avenue, Los Angeles, at the door of Paulson Hall the evening of the 7:30 performance.

LLU Camera Club Plans Slide Show

Loma Linda University Camera Club and the Wind and Sun Council of Camera Clubs plan a showing of "The Year Book," a slide program by Pastor Herman Bielenberg, at the San Bernardino Valley College auditorium on Saturday, March 12, at 8 p.m.

Tickets for the program carry a suggested donation of \$1.00, and may be reserved by calling Karl C. Fischer at University extension 530.

LLU PHYSICIAN NEEDED

Immediate in Beaver City, Nebraska. SDA church in town, 3 hospitals nearby. Modern, fully equipped clinic. New 50 bed Nursing Home. Net annual income over \$25,000. For information, contact George W. Shafer, Jr., president, First State Bank, Beaver City, Nebraska.

OFFICE SPACE

Adventist internist and pathologist have 2100 square feet available July 1 for rent in new office building. Complete clinical and surgical pathology lab available. Space ideal for 2 physicians, any specialty. City of 135,000 in the heart of the Southern Union. Two large general hospitals, open staffs. Several doctors taking Bible studies — a real challenge for home missionary work as well as an ideal place to practice. Calvin R. Thrash, Jr., MD, P.O. Box 4159, Columbus, Georgia 31904.

PHYSICAL THERAPISTS

Physical therapists needed for modern physical therapy facility. Recent graduates also invited to apply. Contact Personnel Director, Florida Sanitarium and Hospital, 601 E. Rollins, Orlando, Florida 32803.

Great on the griddle!



grilled VEGETABLE BURGER, buns, and hot sliced pineapple

Simply shape into patties your favorite VEGETABLE BURGER mixture—beaten eggs, chopped onion, and seasoning. (See easy recipe on can.) Grill with slices of canned pineapple and bun halves. You'll rate it **Grr-reat!**

Loma Linda FOODS

Quality Foods Since 1906