

SDR 100/2013

19 June 2013

## Pupils with Statements of Special Educational Needs: January 2013

This Statistical First Release presents data on pupils with statements of special educational needs (SEN) in January 2013. The information, which is taken from the STATS2 survey of local authorities (LAs), is analysed by age group, by type of school and by LA. A more detailed report on pupils with statements of SEN, including data from the Pupil Level Annual School Census (PLASC), will be published later in the year in *'Schools Census Results, 2013'*.

Please note that comparisons between LAs should be treated with caution. The decision whether or not to issue a statement is a matter for individual LAs, taking into account a child's individual needs.

### Key points

#### Pupils with statements

- The number of pupils with a statement of SEN decreased by 0.2 per cent (less than 30 pupils) during 2012, bringing the total number with a statement to 13,564 at January 2013 (*Chart 1, Table 1*). Of these pupils, 65 per cent were educated at mainstream schools (*Chart 2, Table 3*).
- At January 2013, an estimated 2.9 per cent of pupils on roll had statements of SEN. This percentage has decreased from 3.2 per cent in January 2007 (*Table 1*).
- 1,286 pupils were newly assessed as requiring a statement during 2012, compared with 1,333 in the previous year. (*Chart 4, Table 4*).
- Since 2003/04 there has been a steady decrease in the number of pupils with a statement, 13,564 in 2012/13 compared with 16,959 in 2003/04 (*Chart 1*). This trend is also reflected in the number of pupils with a statement in the School Census. However, the percentage of pupils with a statement has been around 3 per cent for the last four years (*Table 1*).

#### Inclusion

- 92 per cent (12,437 pupils) of the total with statements were educated within their "home" LA rather than in other authorities (*Table 1*).
- 29 per cent of pupils with statements were educated at maintained special schools. A further 46 per cent were educated in mainstream classes at mainstream schools, with an additional 20 per cent in special classes at mainstream schools (*Table 3*).
- The percentage of pupils with statements educated at mainstream schools varied considerably across LAs, from 92 per cent in Ceredigion (which does not have a special school) to 23 per cent in Merthyr Tydfil (*Table 10*).

**Statistician:** Steve Hughes

**Tel:** 029 2082 5060

**Email:** [school.stats@wales.gsi.gov.uk](mailto:school.stats@wales.gsi.gov.uk)
**Next update:** June 2014 (provisional)

**Twitter:** [www.twitter.com/statisticswales](http://www.twitter.com/statisticswales) | [www.twitter.com/ystadegaucymru](http://www.twitter.com/ystadegaucymru)

Cyhoeddwyd gan Y Gwasanaethau Gwybodaeth a Dadansoddi  
 Llywodraeth Cymru, Parc Cathays, Caerdydd, CF10 3NQ  
 Ffôn – Swyddfa'r Wasg **029 2089 8099**, Ymholiadau Cyhoeddus **029 2082 3332**  
**[www.cymru.gov.uk/ystadegau](http://www.cymru.gov.uk/ystadegau)**

Issued by Knowledge and Analytical Services  
 Welsh Government, Cathays Park, Cardiff, CF10 3NQ  
 Telephone – Press Office **029 2089 8099**, Public Enquiries **029 2082 5050**  
**[www.wales.gov.uk/statistics](http://www.wales.gov.uk/statistics)**



Llywodraeth Cymru  
 Welsh Government

## Contents

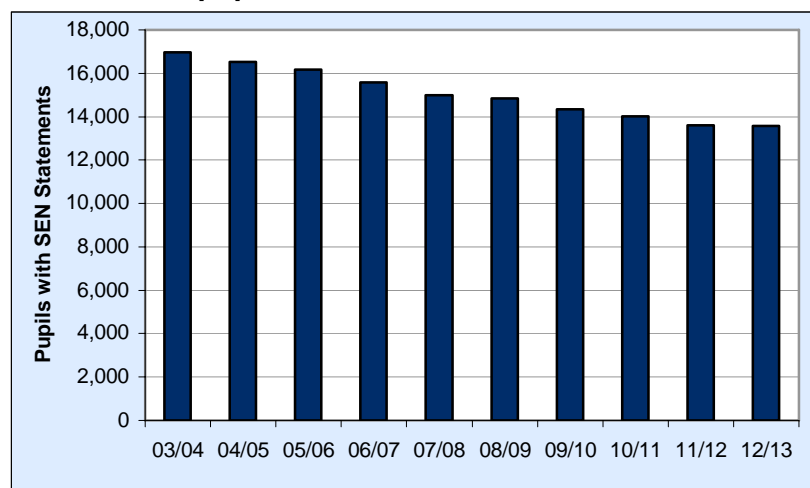
	<b>Page</b>	
<b>Section 1</b>	<b>Pupils with statements, by place of education and age group</b>	3
Table 1	Pupils with statements, by place of education	3
Table 2	Pupils with statements, by place of education and age group	4
Table 3	Percentage distribution of pupils with statements, by place of education and age group	5
<b>Section 2</b>	<b>Pupils transferring schools and newly assessed as requiring a statement</b>	6
Table 4	Pupils newly assessed as requiring a statement	6
Table 5	Pupils with statements who transferred schools	7
<b>Section 3</b>	<b>Welsh Local Authority data</b>	7
Table 6	Assessments by LA	8
Table 7	Assessments by LA: number completed per week	8
Table 8	Pupils with statements by LA	9
Table 9	Pupils with statements by place of education and LA, at January 2013	9
Table 10	Percentage of pupils with statements by place of education & LA at January 2013	10
Table 11	Pupils with statements, by age group and LA at January 2013	10
Key Quality Information		11

## Section 1: Pupils with statements, by place of education and age group

The data is collected each January by LAs in Wales.

Further data for pupils with statements by place of education and age group can be found in Tables 1 to 3.

**Chart 1: Total pupils with SEN statements**



- Since 2003/04 there has been a year on year decrease in the number of pupils with SEN.
- The percentage of pupils with SEN statements has fallen over the last ten years from around 3.5 per cent to nearer 3 per cent. However the percentage of pupils with a statement has been around 3 per cent for the last four years.
- The number of SEN pupils in mainstream classes has fallen over the last 10 years by over 2,500.

**Table 1: Pupils with statements, by place of education (a)**

	2006/07	2007/08	2008/09	2009/10	2010/11	2011/12	2012/13
Pupils registered in their own authority and receiving education in that authority in:							
Mainstream schools:							
Mainstream classes	7,476	7,006	6,528	6,424	6,077	5,703	5,798
Special classes/units	3,056	2,913	3,063	2,804	2,848	2,883	2,618
Maintained special schools	3,350	3,375	3,510	3,448	3,508	3,518	3,614
Independent & non-maintained special schools	51	54	59	58	73	69	69
Pupil Referral Units	123	133	123	122	150	150	163
Other than in school	235	211	252	223	185	154	175
<b>Total</b>	<b>14,291</b>	<b>13,692</b>	<b>13,535</b>	<b>13,079</b>	<b>12,841</b>	<b>12,477</b>	<b>12,437</b>
Pupils registered in their own authority but receiving education in another authority in:							
Mainstream schools:							
Mainstream classes	446	445	446	409	381	379	391
Special classes/units	85	79	75	90	77	77	74
Maintained special schools	449	459	451	423	379	356	347
Independent & non-maintained special schools	284	302	300	297	311	283	297
Pupil Referral Units	0	2	0	7	4	8	9
Other than in school	24	15	25	22	16	11	9
<b>Total</b>	<b>1,288</b>	<b>1,302</b>	<b>1,297</b>	<b>1,248</b>	<b>1,168</b>	<b>1,114</b>	<b>1,127</b>
<b>Total pupils with SEN statements</b>	<b>15,579</b>	<b>14,994</b>	<b>14,832</b>	<b>14,327</b>	<b>14,009</b>	<b>13,591</b>	<b>13,564</b>
<b>Total pupils on roll</b>	<b>489,646</b>	<b>484,572</b>	<b>479,446</b>	<b>476,363</b>	<b>475,260</b>	<b>474,872</b>	~
<i>Percentage of pupils with SEN statements (b)</i>	3.2	3.1	3.1	3.0	2.9	2.9	2.9

(a) At January each year.

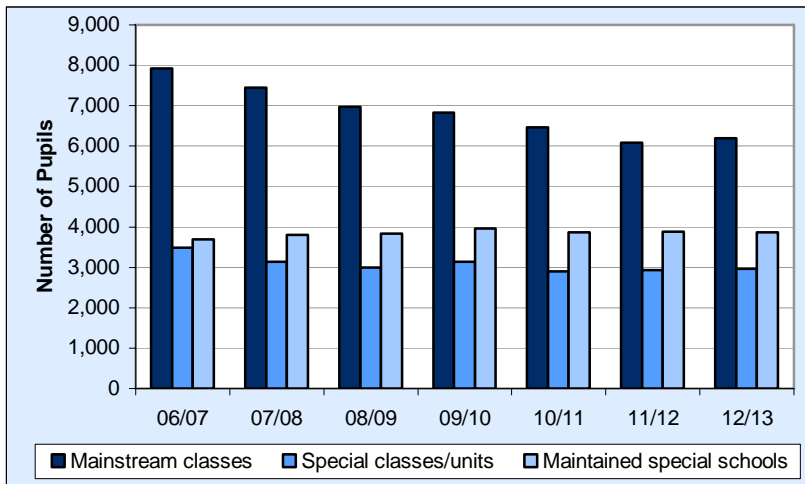
(b) 2012/13 percentage is based on total pupils on roll at January 2012, excluding pupils in Pupil Referral Units (PRUs).

From 2010 information for pupils in PRUs and educated other than at school is collected via the Educated Other Than At School Pupil - Level Annual School Census (EOTAS PLASC).

Percentages prior to 2009/10 include all pupils in all schools.

For 2013 PLASC data is not available at time of publication. The pupils on roll figure from January 2012 has been used to calculate the 2012/13 percentage of pupils with SEN statements.

**Chart 2: Percentage of pupils with statements by place of education**



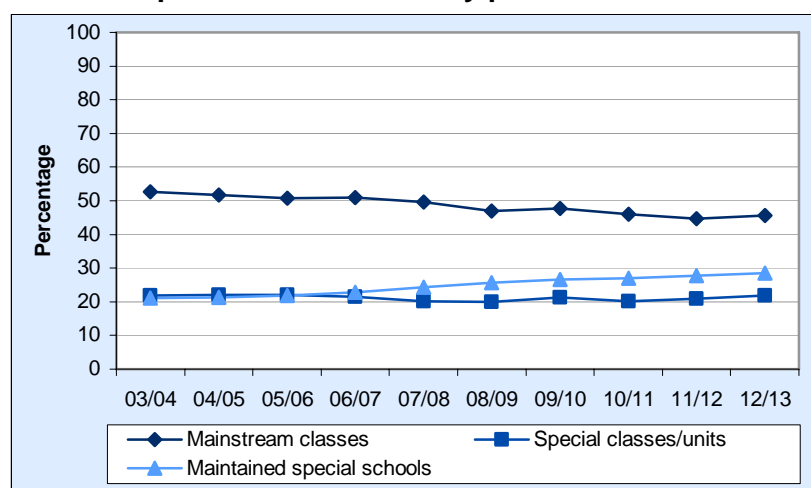
- The last seven years have seen a decrease in the number of pupils with statements in mainstream classes fall from 7,922 to 6,189.
- Pupils with statements attending special classes/units within mainstream schools have decreased from 3,141 to 2,692.
- The number of pupils with statements at maintained special schools has increased over the last seven years from 3,799 to 3,961.

**Table 2: Pupils with statements, by place of education and age group (a)**

	2006/07	2007/08	2008/09	2009/10	2010/11	2011/12	2012/13
Mainstream schools:							
Mainstream classes							
Under 5	268	252	296	307	329	364	351
5-15	7,275	6,760	6,387	6,188	5,733	5,309	5,343
16 & over	379	439	291	338	396	409	495
<b>Total</b>	<b>7,922</b>	<b>7,451</b>	<b>6,974</b>	<b>6,833</b>	<b>6,458</b>	<b>6,082</b>	<b>6,189</b>
Special classes/units:							
Under 5	146	154	198	151	142	159	143
5-15	2,906	2,751	2,843	2,659	2,675	2,653	2,374
16 & over	89	87	97	84	108	148	175
<b>Total</b>	<b>3,141</b>	<b>2,992</b>	<b>3,138</b>	<b>2,894</b>	<b>2,925</b>	<b>2,960</b>	<b>2,692</b>
Maintained special schools:							
Under 5	144	153	150	134	140	143	185
5-15	2,987	2,960	3,070	2,930	2,885	2,862	2,824
16 & over	668	721	741	807	862	869	952
<b>Total</b>	<b>3,799</b>	<b>3,834</b>	<b>3,961</b>	<b>3,871</b>	<b>3,887</b>	<b>3,874</b>	<b>3,961</b>
Independent & non-maintained special schools							
Under 5	7	0	3	5	7	5	3
5-15	240	263	257	247	258	220	217
16 & over	88	93	99	103	119	127	146
<b>Total</b>	<b>335</b>	<b>356</b>	<b>359</b>	<b>355</b>	<b>384</b>	<b>352</b>	<b>366</b>
Pupil Referral Units:							
Under 5	0	0	0	0	0	0	2
5-15	122	130	118	122	150	151	152
16 & over	1	5	5	7	4	7	18
<b>Total</b>	<b>123</b>	<b>135</b>	<b>123</b>	<b>129</b>	<b>154</b>	<b>158</b>	<b>172</b>
Other than in school:							
Under 5	23	10	10	13	15	9	14
5-15	222	188	220	203	145	136	145
16 & over	14	28	47	29	41	20	25
<b>Total</b>	<b>259</b>	<b>226</b>	<b>277</b>	<b>245</b>	<b>201</b>	<b>165</b>	<b>184</b>
<b>Total numbers:</b>							
Under 5	588	569	657	610	633	680	698
5-15	13,752	13,052	12,895	12,349	11,846	11,331	11,055
16 & over	1,239	1,373	1,280	1,368	1,530	1,580	1,811
<b>Total</b>	<b>15,579</b>	<b>14,994</b>	<b>14,832</b>	<b>14,327</b>	<b>14,009</b>	<b>13,591</b>	<b>13,564</b>

(a) At January each year.

**Chart 3: Pupils with statements by place of education**



- 46 per cent of pupils with statements were educated in mainstream classes in 2012/13, a fall from 53 per cent in 2003/04. Since 2010 the percentage of pupils has levelled off at around 46 per cent.
- 29 per cent of pupils with statements were educated at maintained special schools, a rise from 21 per cent in 2003/04.
- A higher proportion of pupils with statements are aged 16 and over in 2012/13 (13 per cent) compared with 2003/04 (7 per cent).

**Table 3: Percentage distribution of pupils with statements, by place of education and age group (a)**

	2006/07	2007/08	2008/09	2009/10	2010/11	2011/12	2012/13
Place of education:							
Mainstream schools:							
Mainstream classes	51	50	47	48	46	45	46
Special classes/units	20	20	21	20	21	22	20
Maintained special schools	24	26	27	27	28	29	29
Independent & non-maintained special schools	2	2	2	2	3	3	3
Pupil Referral Units	1	1	1	1	1	1	1
Other than in school	2	2	2	2	1	1	1
<b>Total</b>	<b>100</b>	<b>100</b>	<b>100</b>	<b>100</b>	<b>100</b>	<b>100</b>	<b>100</b>
<b>of which in mainstream schools</b>	<b>71</b>	<b>70</b>	<b>68</b>	<b>68</b>	<b>67</b>	<b>67</b>	<b>65</b>
Age group:							
Under 5	4	4	4	4	5	5	5
5-15	88	87	87	86	85	83	82
16 & over	8	9	9	10	11	12	13
<b>Total</b>	<b>100</b>	<b>100</b>	<b>100</b>	<b>100</b>	<b>100</b>	<b>100</b>	<b>100</b>

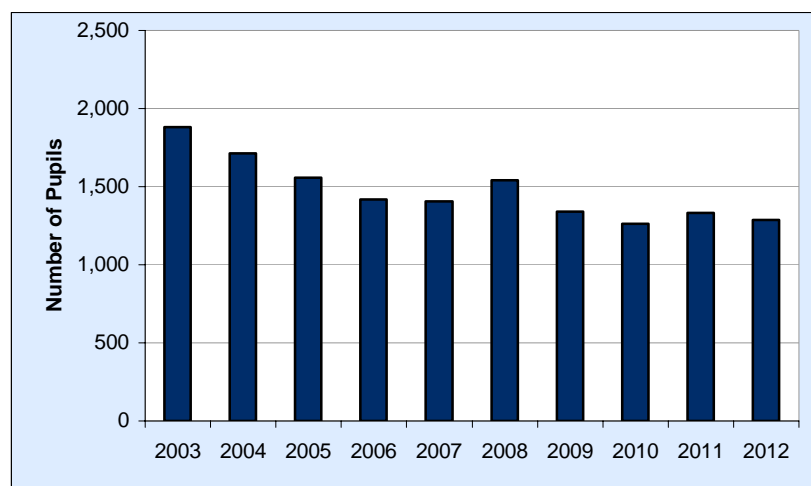
(a) At January each year. Percentages shown are the number of pupils with statements attending each place of education as a percentage of the total number of children with statements.

## Section 2: Pupils Transferred and Newly Assessed

The data is collected each January by LAs in Wales.

Further data for on pupils with statements who transferred schools and pupils newly assessed as requiring a statement can be found in Tables 4 to 5.

**Chart 4: Total pupils newly assessed as requiring a statement**



- Since 2003 there has been a decrease in the number of pupils newly assessed as requiring a statement, from 1,882 to 1,286 in 2012.
- The fall in the number of pupils newly assessed is most evident in the 5 to 15 age band, where in 2003 there were 1,438 and in 2012 there were 874.

**Table 4: Pupils newly assessed as requiring a statement by place of education and age group (a)**

	2006	2007	2008	2009	2010	2011	2012
Pupils newly assessed in:							
Mainstream schools:							
Mainstream classes	826	755	876	800	742	710	720
Special classes/units	272	323	331	249	237	301	221
Maintained special schools	245	239	263	206	216	254	271
Independent & non-maintained special schools	16	16	24	16	22	18	20
Other than in school	38	17	19	19	12	22	23
Awaiting provision specified in statements	10	39	20	28	15	6	9
Pupil Referral Units	10	15	9	22	20	22	22
Pupils newly assessed aged:							
Under 5	384	347	426	383	374	426	403
5-15	1,028	1,042	1,071	951	881	895	874
16 & over	5	15	45	6	9	12	9
<b>Total newly assessed pupils</b>	<b>1,417</b>	<b>1,404</b>	<b>1,542</b>	<b>1,340</b>	<b>1,264</b>	<b>1,333</b>	<b>1,286</b>

(a) Pupils for whom statements of Special Educational Needs were made for the first time during the calendar year.

**Table 5: Pupils with statements who transferred schools (a)**

	2006	2007	2008	2009	2010	2011	2012
Pupils with statements who transferred:							
from mainstream schools to special, independent or grant maintained schools	217	222	189	194	246	188	220
from special or independent or grant maintained schools to mainstream classes in mainstream schools	23	13	23	18	9	15	15
from special or independent or grant maintained schools to designated special units/classes in mainstream school	13	14	18	10	13	25	8
<b>Total</b>	<b>253</b>	<b>249</b>	<b>230</b>	<b>222</b>	<b>268</b>	<b>228</b>	<b>243</b>

(a) Pupils with statements who transferred during the calendar year (transfers are made in the years following a statement being issued).

- The total number of pupils with statements who have transferred schools over the past ten years has fluctuated from a high of 279 in 2004 to a low of 201 in 2005, in 2012 the figure stood at 243.
- The vast majority of pupils who transferred moved from mainstream schools to special schools.

### Section 3: Welsh Local Authority data

*Caution should be used when comparing LA data as the policy of issuing statements differs between authorities. In addition an LA may have changed its rules with regard to statements from the previous year.*

Further data at LA level can be found in Tables 6 to 11.

#### Key Points

#### **Percentage distribution of pupils with statements, by place of education and LA, at January 2013** (Table 10)

- 92 per cent of pupils with statements in Ceredigion (which does not have a special school) were educated at mainstream schools.
- Almost 75 per cent of pupils with statements in Merthyr Tydfil were educated at maintained special schools.

#### **Pupils with statements, by age group and LA, at January 2013** (Table 11)

- Swansea had the highest rate of pupils with statements per 1,000 pupils, with 43.
- The lowest rate of pupils with statements was in Bridgend with 15 pupils per 1,000.



**Table 6: Number of assessments, by LA**

LA	Assessments resulting in new statements		Assessments completed, statements not issued		Assessments on-going at 31 Dec.		Total assessments completed or on-going	
	2011	2012	2011	2012	2011	2012	2011	2012
Isle of Anglesey	27	23	2	4	3	5	32	32
Gwynedd	44	53	6	15	12	8	62	76
Conwy	27	18	2	3	8	14	37	35
Denbighshire	36	17	1	2	9	11	46	30
Flintshire	59	65	0	0	7	7	66	72
Wrexham	39	44	0	0	7	5	46	49
Powys	48	33	6	1	15	17	69	51
Ceredigion	8	0	1	1	3	1	12	2
Pembrokeshire	21	46	2	2	22	25	45	73
Carmarthenshire	132	107	5	2	65	67	202	176
Swansea	166	145	6	9	17	23	189	177
Neath Port Talbot	94	112	14	11	22	36	130	159
Bridgend	23	28	1	0	23	52	47	80
The Vale of Glamorgan	17	37	4	4	16	3	37	44
Rhondda Cynon Taf	93	106	11	6	63	81	167	193
Merthyr Tydfil	15	23	6	5	11	19	32	47
Caerphilly	71	76	18	1	26	29	115	106
Blaenau Gwent	65	15	46	5	6	0	117	20
Torfaen	13	18	24	0	10	8	47	26
Monmouthshire	42	27	5	7	11	7	58	41
Newport	96	137	5	3	45	30	146	170
Cardiff	197	156	10	14	35	41	242	211
<b>Wales</b>	<b>1,333</b>	<b>1,286</b>	<b>175</b>	<b>95</b>	<b>436</b>	<b>489</b>	<b>1,944</b>	<b>1,870</b>

**Table 7: Average number of assessments completed per week, by LA (a)**

LA	2006	2007	2008	2009	2010	2011	2012
Isle of Anglesey	0.5	0.8	0.8	0.9	1.0	0.6	0.5
Gwynedd	0.5	0.5	0.9	1.1	1.8	1.0	1.3
Conwy	0.7	1.0	0.6	1.0	0.4	0.6	0.4
Denbighshire	0.6	0.8	0.8	0.6	0.8	0.7	0.4
Flintshire	1.4	1.3	1.4	1.2	1.2	1.1	1.3
Wrexham	1.8	2.1	1.8	0.5	0.5	0.8	0.8
Powys	2.1	1.0	0.4	0.3	0.3	1.0	0.7
Ceredigion	1.4	0.6	0.2	0.4	0.3	0.2	0.0
Pembrokeshire	0.4	0.5	0.6	0.6	0.5	0.4	0.9
Carmarthenshire	2.8	2.0	3.4	2.5	2.3	2.6	2.1
Swansea	2.7	3.3	3.8	3.7	2.9	3.3	3.0
Neath Port Talbot	1.1	1.5	2.2	2.1	1.8	2.1	2.4
Bridgend	1.4	0.8	1.1	0.8	0.7	0.5	0.5
The Vale of Glamorgan	1.2	0.9	0.9	1.0	0.8	0.4	0.8
Rhondda Cynon Taf	1.4	1.4	1.8	1.5	1.3	2.0	2.2
Merthyr Tydfil	0.6	0.4	0.4	0.2	0.3	0.4	0.5
Caerphilly	2.9	3.9	2.9	1.8	1.6	1.7	1.5
Blaenau Gwent	0.1	0.3	1.2	1.0	1.3	2.1	0.4
Torfaen	0.3	0.3	0.8	1.0	0.8	0.7	0.3
Monmouthshire	1.4	1.6	1.3	1.3	1.2	0.9	0.7
Newport	2.1	1.5	1.8	1.6	1.3	1.9	2.7
Cardiff	3.4	3.6	4.1	4.2	3.7	4.0	3.3
<b>Wales</b>	<b>30.7</b>	<b>29.9</b>	<b>32.8</b>	<b>29.2</b>	<b>27.0</b>	<b>29.0</b>	<b>26.6</b>

(a) Number of new statements plus the number of assessments completed but where a statement was not issued, divided by 52.

**Table 8: Pupils with statements, by LA (a)**

LA	2006/07	2007/08	2008/09	2009/10	2010/11	2011/12	2012/13
Isle of Anglesey	427	391	375	380	381	342	322
Gwynedd	647	578	545	525	542	534	539
Conwy	642	557	509	459	417	374	329
Denbighshire	551	516	503	443	417	395	372
Flintshire	899	843	795	759	748	680	680
Wrexham	834	840	834	758	706	650	615
Powys	921	851	752	680	601	549	501
Ceredigion	472	419	342	302	277	230	208
Pembrokeshire	464	429	413	403	359	336	347
Carmarthenshire	1,133	1,135	1,140	1,047	1,046	1,061	1,056
Swansea	1,251	1,306	1,363	1,419	1,458	1,511	1,512
Neath Port Talbot	712	693	716	724	729	732	776
Bridgend	350	347	357	330	360	332	353
The Vale of Glamorgan	467	468	484	478	468	432	427
Rhondda Cynon Taf	627	615	627	611	595	620	697
Merthyr Tydfil	204	205	201	185	192	189	190
Caerphilly	956	984	974	948	876	816	778
Blaenau Gwent	384	354	355	385	390	377	355
Torfaen	389	349	327	293	282	268	258
Monmouthshire	478	492	493	510	523	484	462
Newport	1,021	959	942	927	878	881	1,012
Cardiff	1,750	1,663	1,785	1,761	1,764	1,798	1,775
<b>Wales</b>	<b>15,579</b>	<b>14,994</b>	<b>14,832</b>	<b>14,327</b>	<b>14,009</b>	<b>13,591</b>	<b>13,564</b>

(a) At January each year.

**Table 9: Pupils with statements, by place of education and LA, at January 2013**

LA	Pupils with statements in:							Total pupils with statements
	Mainstream schools in:		Total in mainstream schools	Maintained special schools	Independent & non-maintained special schools	Pupil Referral Unit	Other than in school	
	Mainstream classes	Special classes /units						
Isle of Anglesey	223	3	226	72	8	15	1	322
Gwynedd	351	17	368	131	19	12	9	539
Conwy	105	37	142	167	11	5	4	329
Denbighshire	179	11	190	169	8	4	1	372
Flintshire	281	83	364	269	25	18	4	680
Wrexham	115	237	352	248	7	2	6	615
Powys	191	43	234	250	6	6	5	501
Ceredigion	159	32	191	3	8	2	4	208
Pembrokeshire	160	38	198	128	9	4	8	347
Carmarthenshire	766	164	930	91	8	5	22	1,056
Swansea	786	452	1,238	176	33	32	33	1,512
Neath Port Talbot	210	330	540	208	11	2	15	776
Bridgend	83	32	115	226	11	0	1	353
The Vale of Glamorgan	157	62	219	174	22	9	3	427
Rhondda Cynon Taf	128	49	177	476	27	9	8	697
Merthyr Tydfil	33	11	44	140	2	0	4	190
Caerphilly	382	218	600	129	15	11	23	778
Blaenau Gwent	189	67	256	78	10	10	1	355
Torfaen	135	53	188	49	12	9	0	258
Monmouthshire	250	121	371	59	28	0	4	462
Newport	540	303	843	130	24	14	1	1,012
Cardiff	766	329	1,095	588	62	3	27	1,775
<b>Wales</b>	<b>6,189</b>	<b>2,692</b>	<b>8,881</b>	<b>3,961</b>	<b>366</b>	<b>172</b>	<b>184</b>	<b>13,564</b>

**Table 10: Percentage distribution of pupils with statements, by place of education and LA, at January 2013**

LA	Pupils with statements in:							Total pupils with statements
	Mainstream schools in:		Total in mainstream schools	Maintained special schools	Independent & non-maintained special schools	Pupil Referral Unit	Other than in school	
	Mainstream classes	Special classes /units						
Isle of Anglesey	69	1	70	22	2	5	-	100
Gwynedd	65	3	68	24	4	2	2	100
Conwy	32	11	43	51	3	2	1	100
Denbighshire	48	3	51	45	2	1	-	100
Flintshire	41	12	54	40	4	3	1	100
Wrexham	19	39	57	40	1	-	1	100
Powys	38	9	47	50	1	1	1	100
Ceredigion	76	15	92	1	4	1	2	100
Pembrokeshire	46	11	57	37	3	1	2	100
Carmarthenshire	73	16	88	9	1	-	2	100
Swansea	52	30	82	12	2	2	2	100
Neath Port Talbot	27	43	70	27	1	-	2	100
Bridgend	24	9	33	64	3	0	-	100
The Vale of Glamorgan	37	15	51	41	5	2	1	100
Rhondda Cynon Taf	18	7	25	68	4	1	1	100
Merthyr Tydfil	17	6	23	74	1	0	2	100
Caerphilly	49	28	77	17	2	1	3	100
Blaenau Gwent	53	19	72	22	3	3	-	100
Torfaen	52	21	73	19	5	3	0	100
Monmouthshire	54	26	80	13	6	0	1	100
Newport	53	30	83	13	2	1	-	100
Cardiff	43	19	62	33	3	-	2	100
<b>Wales</b>	<b>46</b>	<b>20</b>	<b>65</b>	<b>29</b>	<b>3</b>	<b>1</b>	<b>1</b>	<b>100</b>

**Table 11: Pupils with statements, by age group and LA, at January 2013**

LA	Rate per 1,000 pupils (a)	Pupils with statements aged:				Total
		Under 5 years	5 -10 years	11-15 years	16 and over	
Isle of Anglesey	33	17	131	144	30	322
Gwynedd	31	33	195	269	42	539
Conwy	19	5	98	175	51	329
Denbighshire	23	12	110	190	60	372
Flintshire	29	29	162	397	92	680
Wrexham	32	18	152	364	81	615
Powys	26	10	114	297	80	501
Ceredigion	22	6	69	110	23	208
Pembrokeshire	19	20	101	164	62	347
Carmarthenshire	38	22	307	497	230	1,056
Swansea	43	169	588	662	93	1,512
Neath Port Talbot	37	67	299	385	25	776
Bridgend	15	2	68	170	113	353
The Vale of Glamorgan	19	21	142	207	57	427
Rhondda Cynon Taf	18	30	153	355	159	697
Merthyr Tydfil	20	14	40	81	55	190
Caerphilly	27	31	265	432	50	778
Blaenau Gwent	35	3	116	172	64	355
Torfaen	16	3	68	153	34	258
Monmouthshire	35	8	158	262	34	462
Newport	41	75	309	468	160	1,012
Cardiff	33	103	642	814	216	1,775
<b>Wales</b>	<b>29</b>	<b>698</b>	<b>4,287</b>	<b>6,768</b>	<b>1,811</b>	<b>13,564</b>

(a) Pupils with statements at January 2013 per 1,000 total pupils at January 2012 minus pupils in Pupil Referral Units. PLASC pupils numbers for January 2013 will be available in July 2013.

From 2010 information for pupils in PRUs and educated other than at school is collected via the Educated Other Than At School Pupil - Level Annual School Census (EOTAS PLASC), which is not published. Percentages prior to 2009/10 include all pupils in all schools.

## Key Quality Information

Caution should be used when comparing LA data as the policy of issuing statements differs between authorities. In addition, an LA may have changed its rules with regard to statements from the previous year.

### Source of data

#### Annual STATS2 data collection from LAs

The STATS2 return is completed each January by LAs. The form relates to those children for whom the LA is responsible. It records the number of children for whom the LA has a statement of SEN as well as the provision made for them, whether within the LA's area or elsewhere. The number of pupils assessed during the previous calendar year and the number of statements issued is also recorded.

#### Definition of Special Educational Needs

Children have special educational needs if they have a learning difficulty which calls for special educational provision to be made for them.

Children have a learning difficulty if they:

- (a) have a significantly greater difficulty in learning than the majority of children of the same age.
- (b) have a disability which prevents or hinders them from making use of educational facilities of a kind generally provided for children of the same age at schools within the area of the local authority.
- (c) are under compulsory school age and fall within the definition at (a) or (b) above or would so do if special educational provision was not made for them.

Special educational provision means:

- (a) for children of two or over, educational provision which is additional to, or otherwise different from, the educational provision made generally for children of their age at schools maintained by the LA, other than special schools, in the area.
- (b) for children under two, educational provision of any kind.

For further information please see the [Special Educational Needs Code of Practice for Wales](#).

**Symbols:** The following symbols have been used throughout the publication:

- percentages less than 0.5 but not zero
- . not applicable
- ~ not yet available

**Rounding:** In tables where figures have been rounded to the nearest final digit there may be an apparent discrepancy between the sum of the constituent items and the total as shown.

## Other countries' releases

Attached is the latest available release for England, published on 12 July 2012. Information for the release is from two sources: the School Census and the SEN2 survey. School Census data is not directly comparable to the STATS2 data collection:

[Special Educational Needs in England: January 2012](#)

Scotland does not use the same term as England and Wales (SEN), but has information on "Additional Support Needs" (ASN), and data is therefore not directly comparable. Their latest release was published on 11 December 2012:

[Summary Statistics for Schools in Scotland, No.3 2012 Edition](#)

## Related data for Wales

The Welsh Government also releases data **from a different source** (the Pupil Level Annual School Census - PLASC) in the form of Statistical First Releases, for example:

[Academic Achievement by Pupil Characteristics, 2012](#), published on 28 March 2013

[Schools Census, 2012: Final Results](#), published on 11 July 2012 (2013 data will be published on 11 July 2013)

*Since the above releases are from a different source, figures may not match, and therefore caution should be taken when making comparisons.*

## Who are the key users of this data?

These statistics are used within and outside the Welsh Government. Some of the key users are:

- Ministers and the Members Research Service in the National Assembly for Wales;
- The Department for Education in England;
- Other government departments;
- Local authorities;
- Schools;
- Estyn, Her Majesty's Inspectorate of Education and Training in Wales;
- Wales Audit Office;
- The Department for Education and Skills in the Welsh Government;
- Other areas of the Welsh Government;
- The research community;
- Students, academics and universities;
- Individual citizens and private companies.

Comments on the coverage or presentation of this release are welcome. Contact details can be found on the front page.

We would welcome any feedback on these statistics.