

University of Colorado Law School

## Colorado Law Scholarly Commons

---

The Past, Present, and Future of Our Public Lands: Celebrating the 40th Anniversary of the Public Land Law Review Commission's Report, One Third of the Nation's Land (Martz Summer Conference, June 2-4)

---

2010

6-2-2010

### SLIDES: Forest Service Planning at a Crossroads; New Approaches to Old Recommendations

Rick Cables

Follow this and additional works at: <https://scholar.law.colorado.edu/celebrating-40th-anniversary-of-public-land-law-review-commission-report>



Part of the [Administrative Law Commons](#), [Energy Policy Commons](#), [Environmental Policy Commons](#), [Forest Management Commons](#), [Land Use Law Commons](#), [Natural Resource Economics Commons](#), [Natural Resources and Conservation Commons](#), [Natural Resources Law Commons](#), [Natural Resources Management and Policy Commons](#), [Oil, Gas, and Mineral Law Commons](#), [Public Policy Commons](#), [Recreation, Parks and Tourism Administration Commons](#), and the [Water Resource Management Commons](#)

---

#### Citation Information

Cables, Rick, "SLIDES: Forest Service Planning at a Crossroads; New Approaches to Old Recommendations" (2010). *The Past, Present, and Future of Our Public Lands: Celebrating the 40th Anniversary of the Public Land Law Review Commission's Report, One Third of the Nation's Land (Martz Summer Conference, June 2-4)*.

<https://scholar.law.colorado.edu/celebrating-40th-anniversary-of-public-land-law-review-commission-report/15>

Reproduced with permission of the Getches-Wilkinson Center for Natural Resources, Energy, and the Environment (formerly the Natural Resources Law Center) at the University of Colorado Law School.

# Forest Service Planning at a Crossroads; New Approaches to Old Recommendations

Rick Cables  
Regional Forester



The Past, Present, and Future of our Public Lands Conference  
June 2, 2010

# Rocky Mountain Region



# Where We've Been Since 1970

- ▣ NFMA 1976
- ▣ 1982 Regulations
- ▣ 2000 Regulations
- ▣ 2005-2008 Regulations

# Key Concepts from 1982 Rule

- ▣ More certainty, ASQ
- ▣ Plans viewed as “social contract”
- ▣ Management area prescriptions  
heart of plan
- ▣ Standards and guidelines
- ▣ Species (viability) focus vs.  
ecosystem focus



# Key Concepts from 2000 Rule

- ▣ Assessments of ecosystem conditions
- ▣ Best available science
- ▣ Recommended advisory committees
- ▣ Ecological sustainability guiding principle

# Key Concepts 2005-2008 Rule

- ▣ Forest Plan as a broad strategic document
- ▣ Could be developed and changed quickly
- ▣ Categorical exclusions for plans permitted
- ▣ Desired conditions heart of plan
- ▣ Forest supervisor is responsible official
- ▣ Guidelines preferred over standards

# Good Ideas-1970 and Today

- ▣ Plan across broad areas and across ownerships
- ▣ Public participation and advisory boards



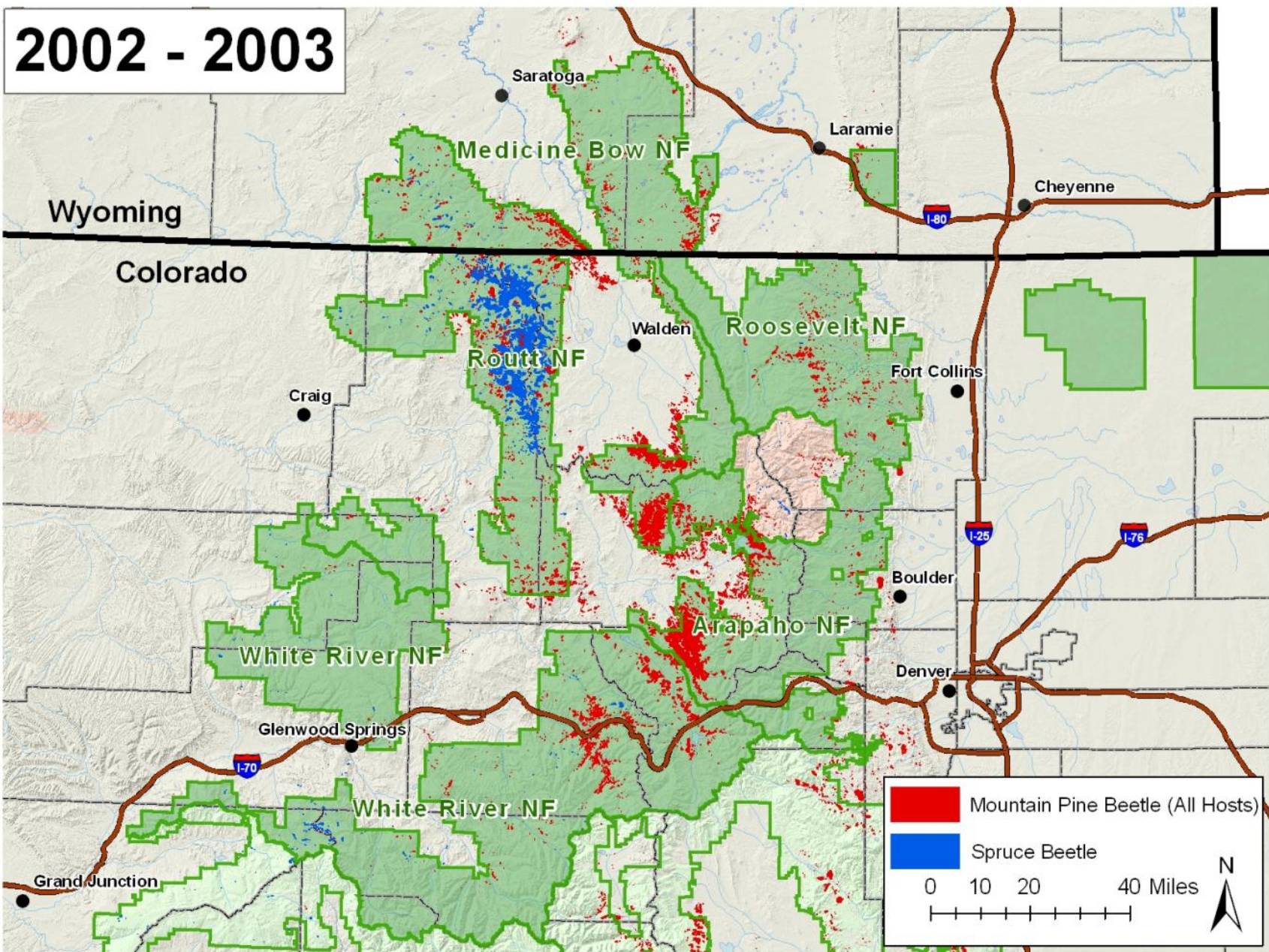
# 1970- Plan Across Ownerships

- ▣ 3-1 planning complements uses and patterns of use on other ownership in the locality and the region.
- ▣ 3-5 All public land agencies should be required to formulate long range, comprehensive land use plans for each state or region, relating such plans not only to internal agency programs but also to land use plans and attendant management programs of other agencies.
- ▣ 3-12 Land use planning among Federal agencies should be systematically coordinated.

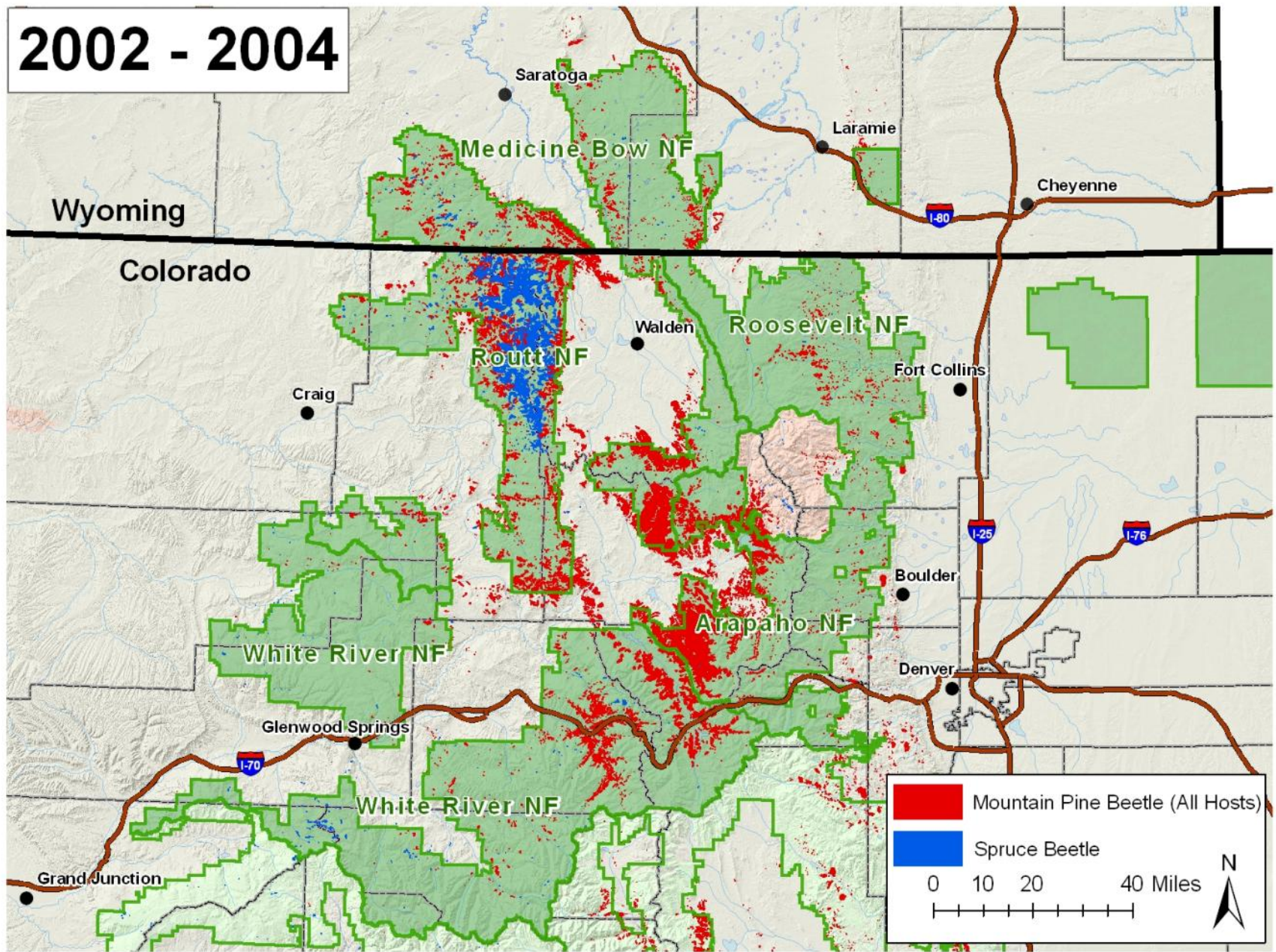
# What's the Right Scale?

- ▣ Wildlife corridors
- ▣ Roadless
- ▣ Prairie species
- ▣ Insects and fire
- ▣ Water
- ▣ Recreation

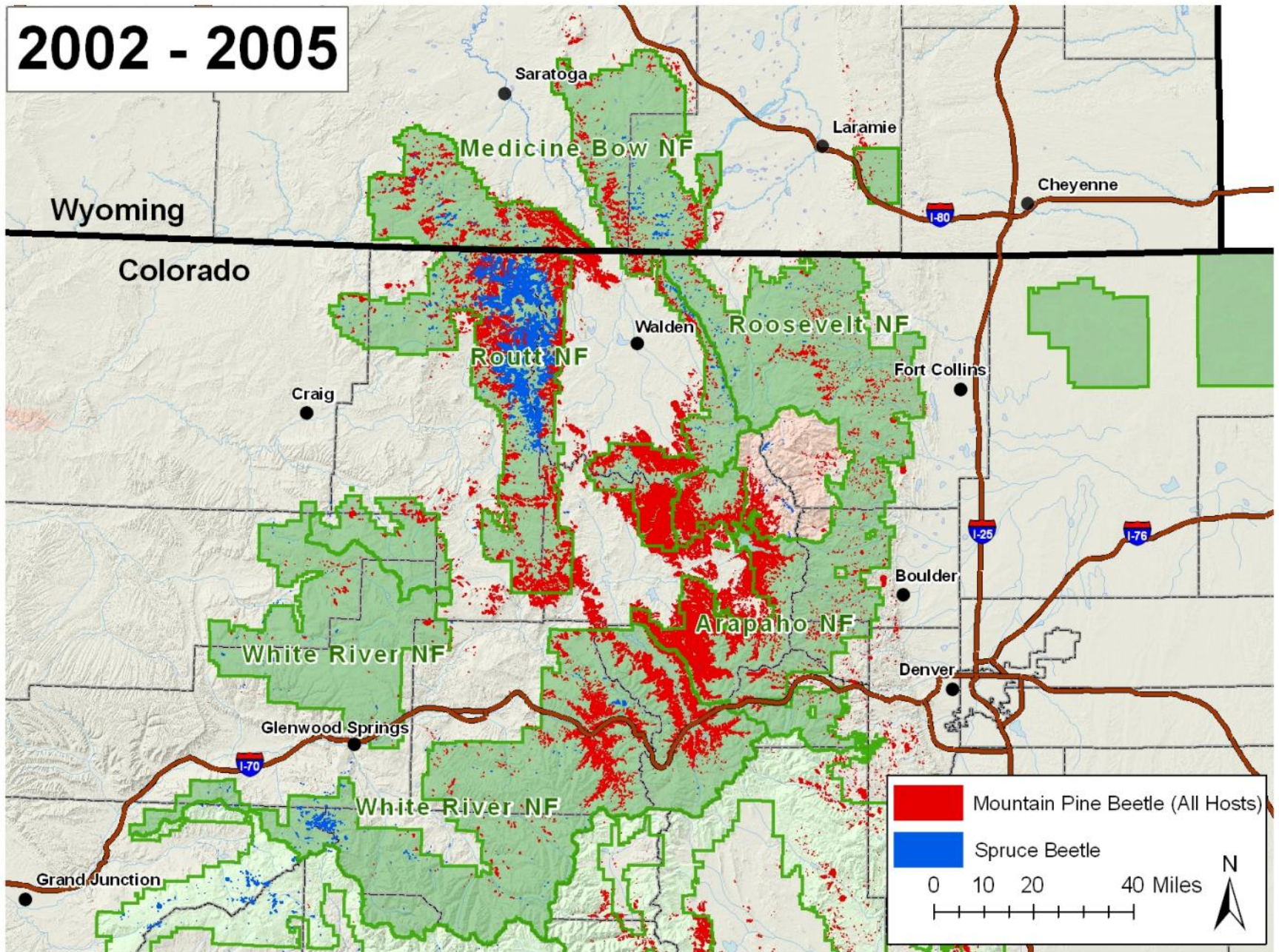
# 2002 - 2003



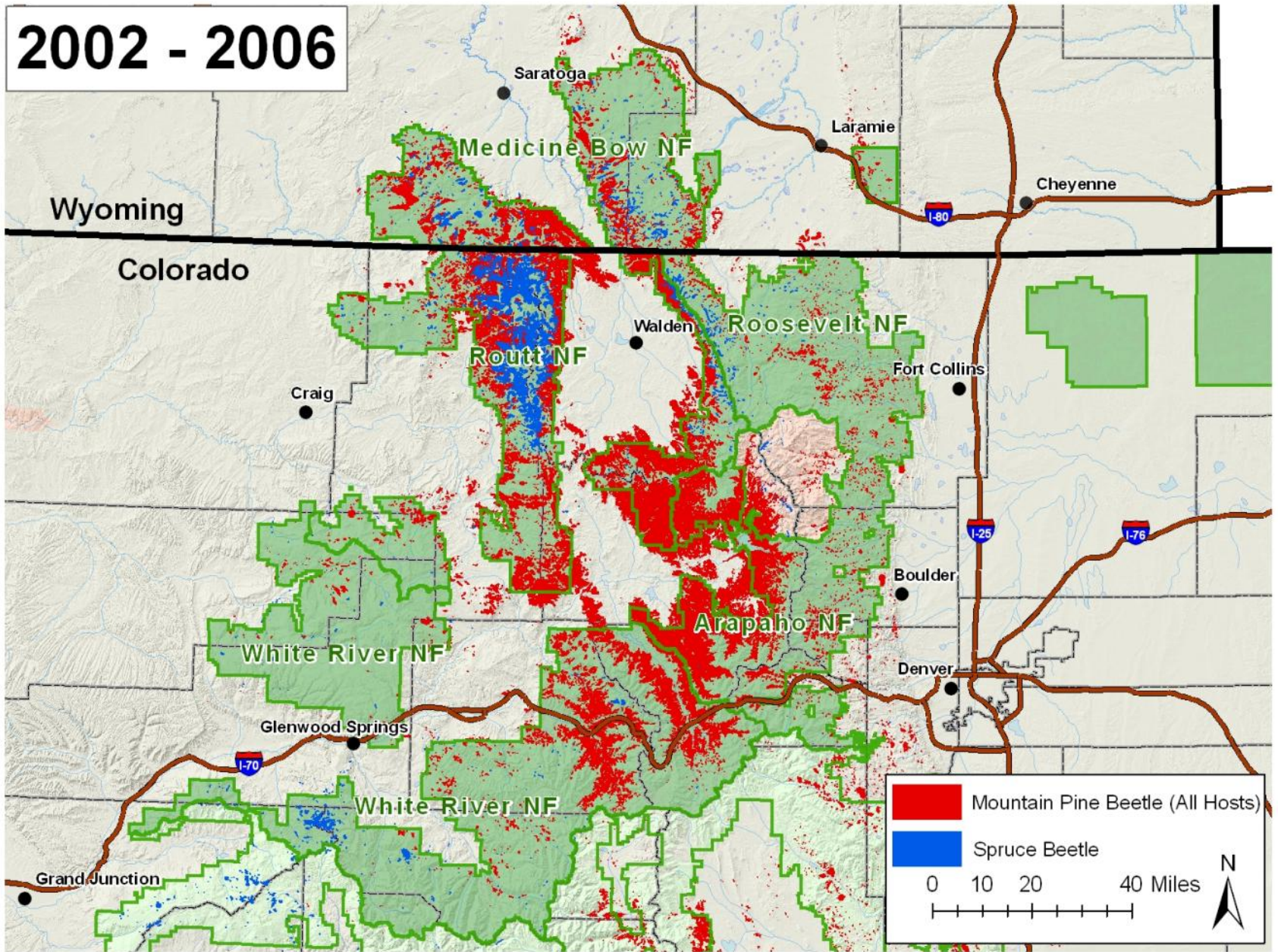
**2002 - 2004**



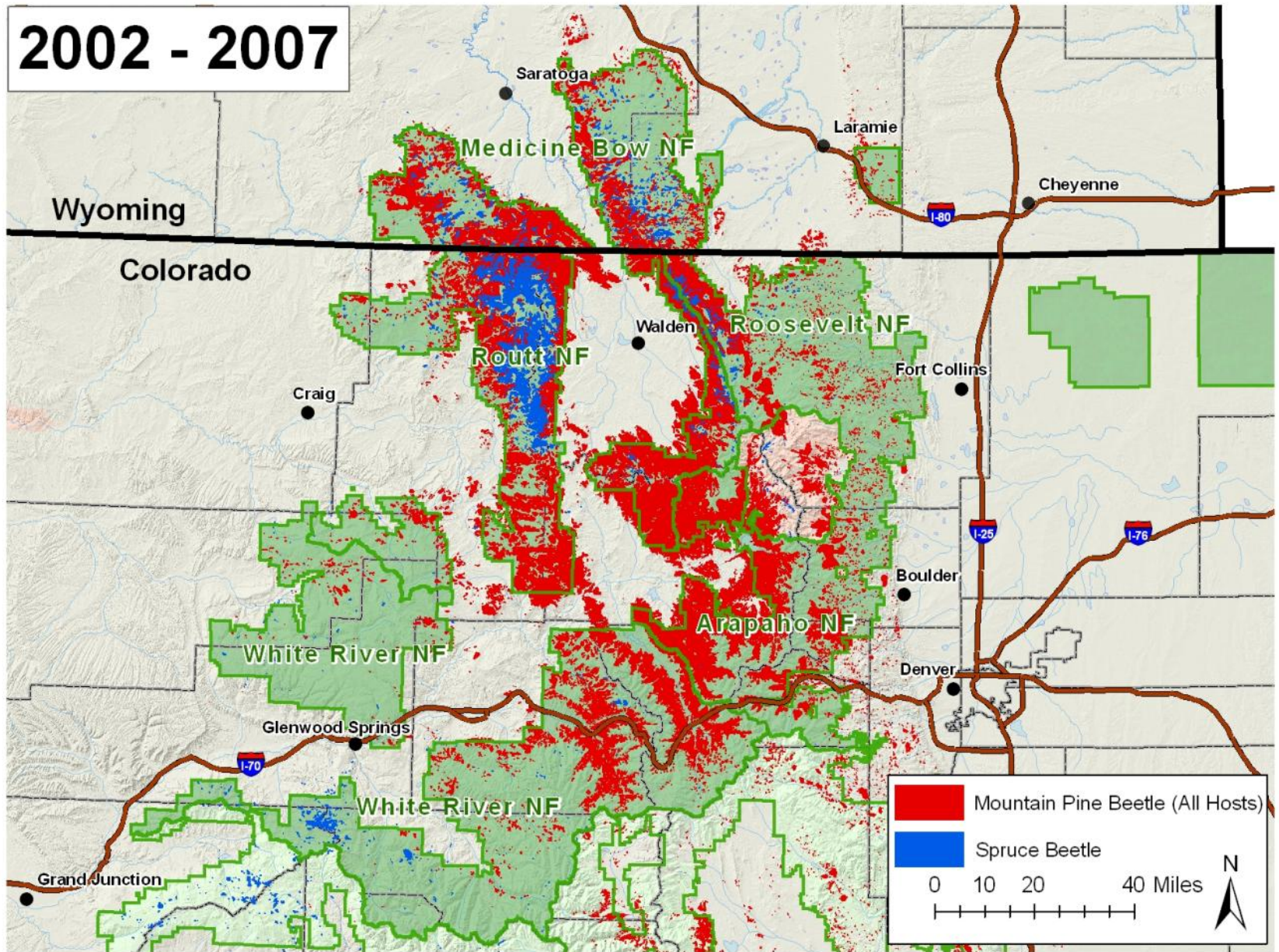
2002 - 2005



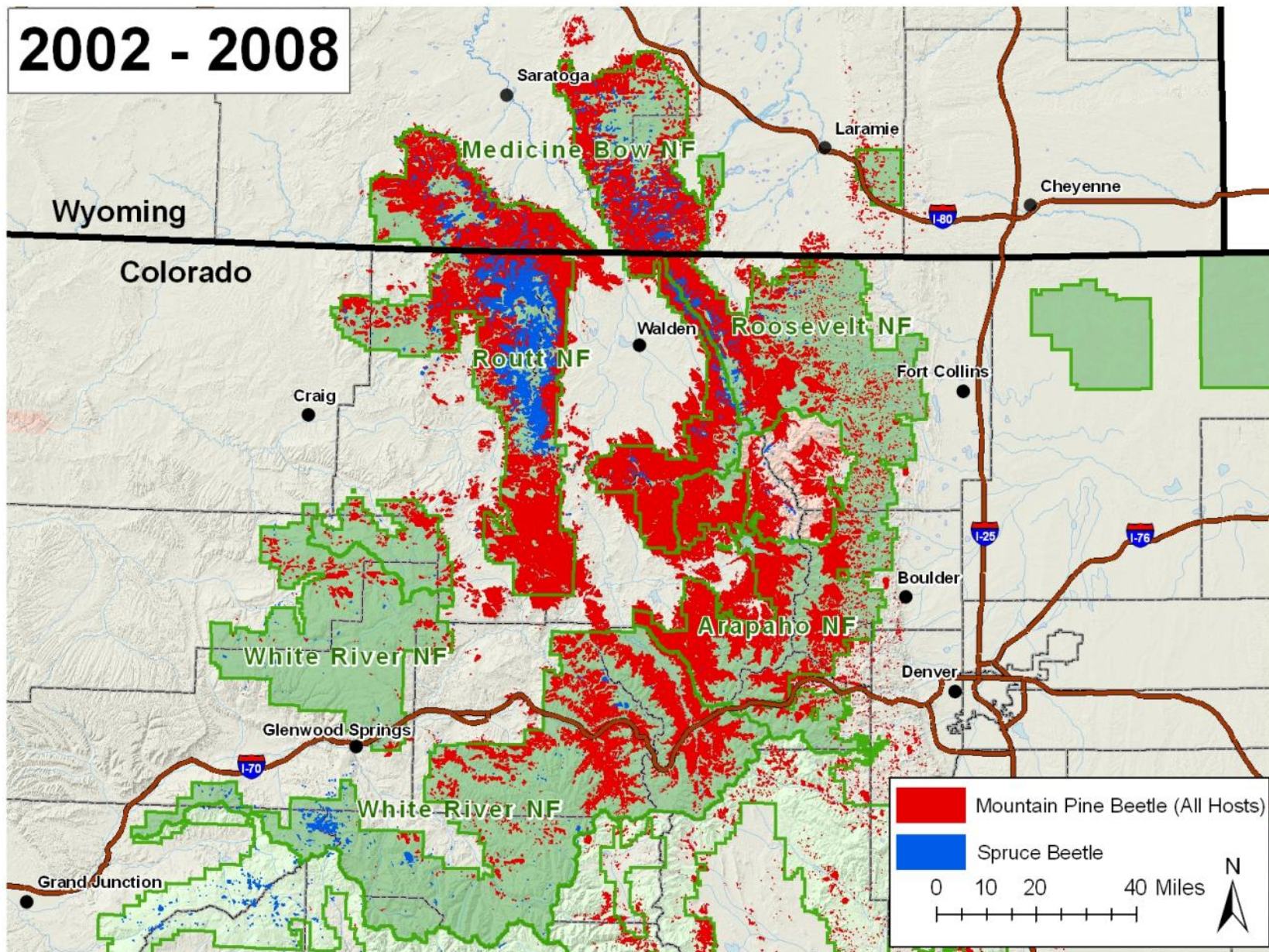
2002 - 2006



2002 - 2007

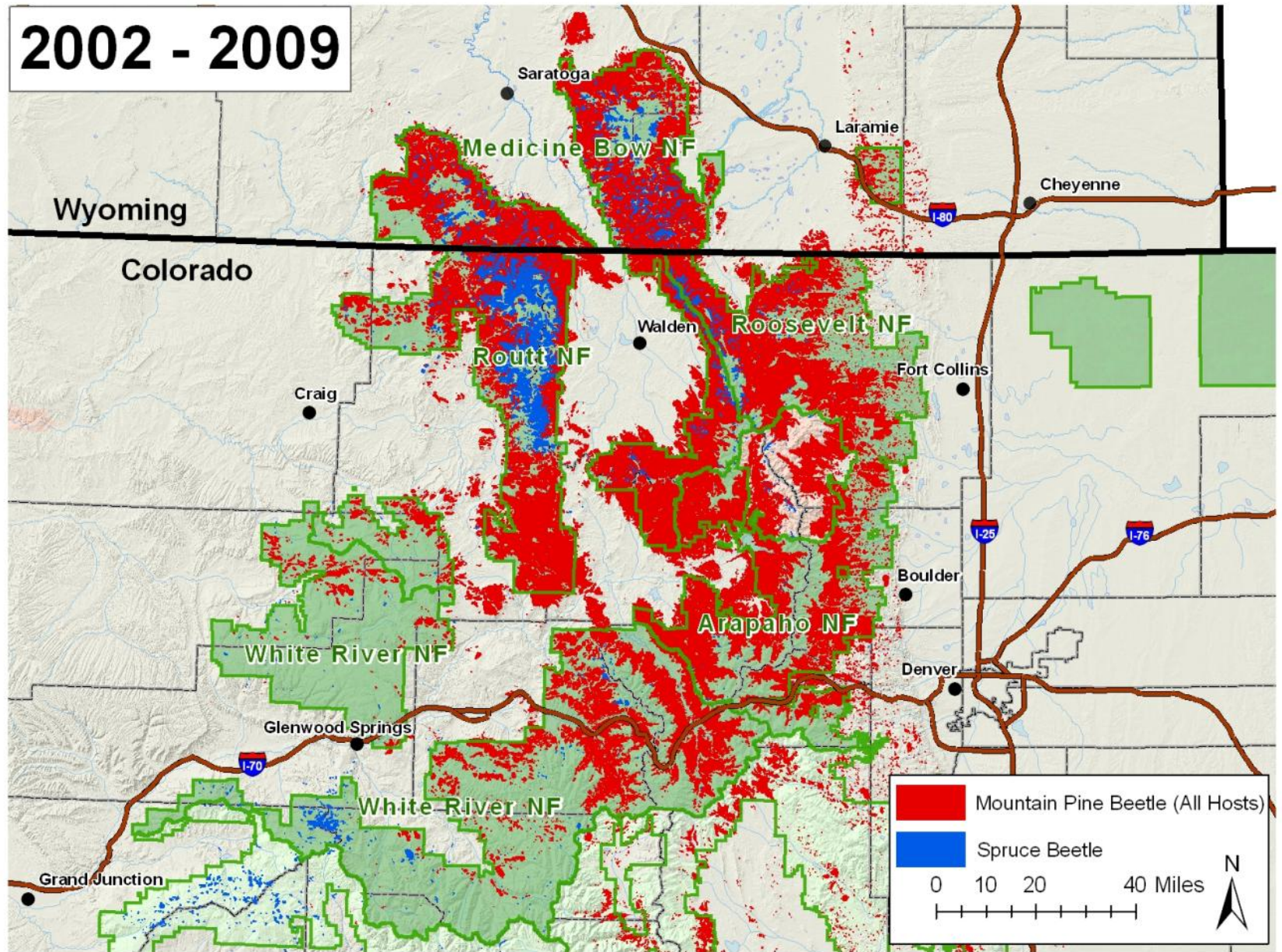


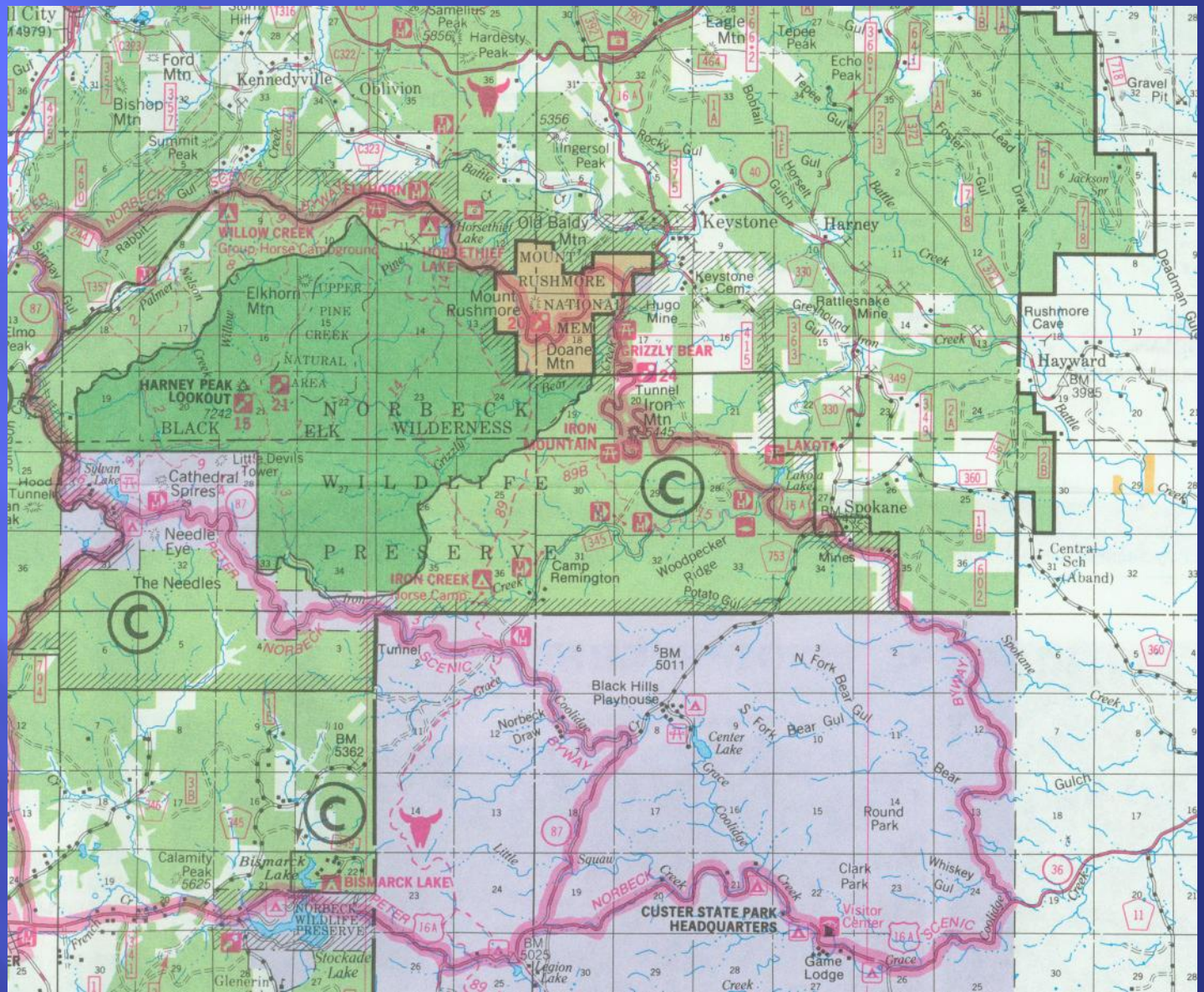
2002 - 2008



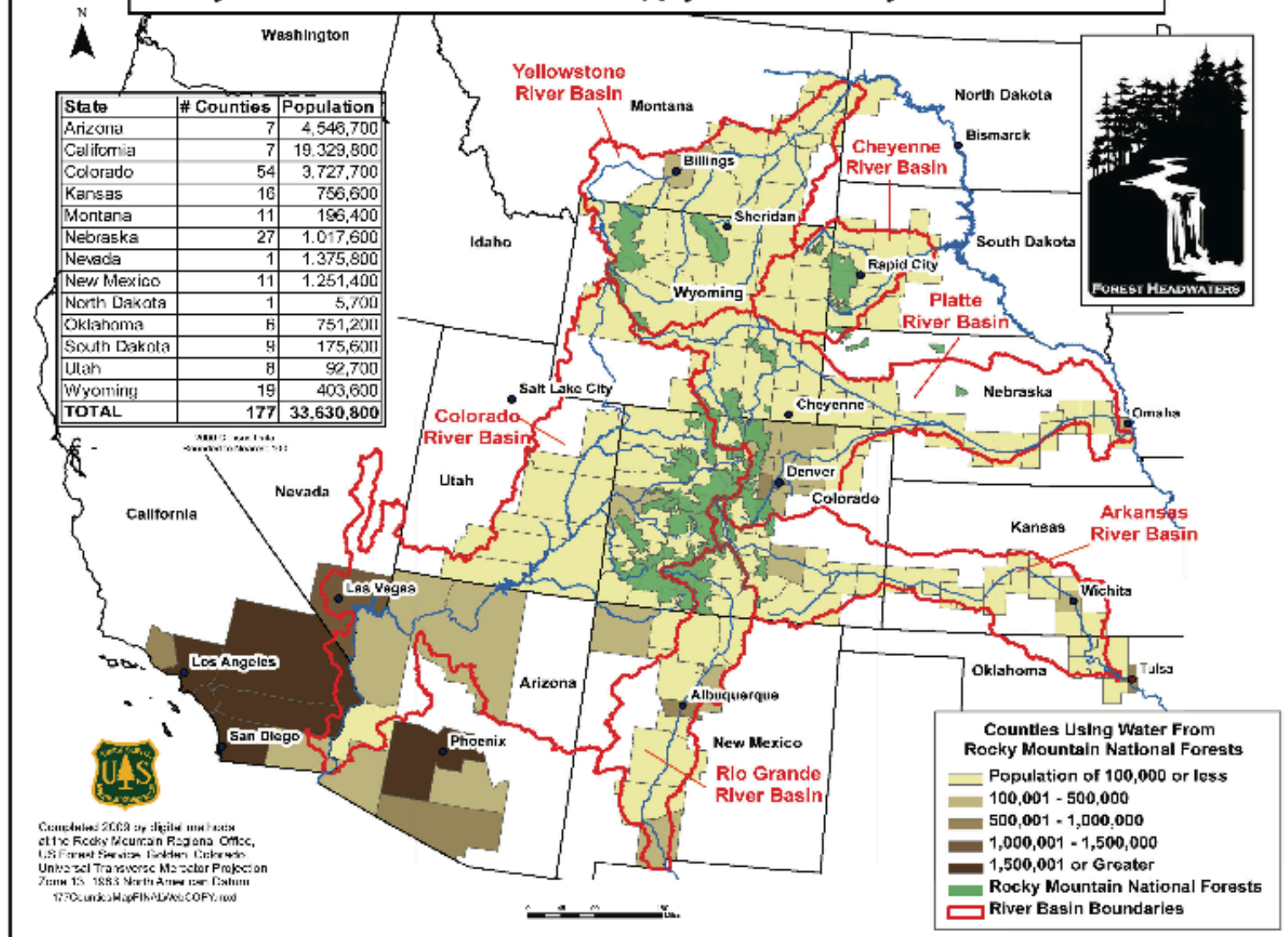


2002 - 2009





## Rocky Mountain National Forests Supply Water to Many Western Counties



People in 177 counties in 13 states depend on water from national forests in the Rocky Mountain Region. They draw their water from rivers or valley soils, and typically use it for some mix of drinking, irrigation, and livestock watering. Counties were included down-river until less than 20 percent of the flow in the river originates on national forests in the Rocky Mountain Region.

# Advisory Boards

“we recommend that consultation with advisory boards be required by statute.

to advise on the **probable impact** of the proposed land use decisions **on the locality,**

to **suggest viable alternatives** that should be considered, and to provide the administrator with **opinions, views, and information that is relevant** to the planning operation.

They should function actively from the inception of the planning process, starting before any plans have been developed, and **should have a continuing role.”** p 60

# News Clip Photo

## Part of nation-wide move

# Forest advisory board disbanding

The Deschutes National Forest advisory committee is one of 11 advisory committees in the nation to be abolished by Secretary of Agriculture Bob Bergland.

Bergland announced his decision to cancel the committees Wednesday afternoon, stating the move would increase public hearings and encourage broad public input.

Earl Nichols, Deschutes supervisor, said he would urge Bergland to reconsider his decision, at least until the land use planning is done on the forest. He said he hoped the committee, which meets about once a month, could be continued until at least November.

Nichols said the board had provided him with new perspectives on day-to-day issues that don't necessarily warrant full public hearings.

In addition, he said, the com-

mittee had been meeting long enough to consider forest programs in relation to each other, rather than as specific issues standing alone.

Nichols said it would be wrong if the board were the only source of public comment. However, he said, major decisions do go through the public comment process.

Committee members expressed surprise that the group would be singled out among 11 in the nation, especially since some cited by Bergland were of more national interest.

The committees to be eliminated included the National Cotton Advisory Committee, National Peanut Advisory Committee, National Rice Advisory Committee, National Tobacco Advisory Committee and the Committee on Grains.

Other forest committees to be abolished included those on the Superior National Forest in

Minnesota, the Ottawa National Forest in Michigan, the Sawtooth National Forest in Idaho, the White Mountain National Forest in New Hampshire and the Forest Research Advisory Committee in Maine.

The Deschutes Forest grazing advisory board was not named by Bergland.

Bergland said the decision to abolish the advisory committees did not reflect on the performance of the members. He said whenever feasible, major decisions would be preceded by public hearings or comment periods, which would be made public through the news media.

## Seniors group formed by community college

A 17-member council of senior citizens, whose job it will be to prepare an "education action plan" for retired persons in Central Oregon, has been announced by Central Oregon Community College.

Council recommendations are expected in several areas — includ-

and Nat Hanson, Howard Milton, Carman Pearce and Ted Thorson, Redmond.

Suggestions for the program may be made to Diekman at 382-6112, ext. 223.



# Contemporary Advisory Boards

- ▣ Black Hills National Forest Advisory Board
- ▣ White Mountain Ad Hoc Advisory Committee
- ▣ RACNAC

# Future Planning Concepts

- ▣ Desired future condition- vision focused
- ▣ Ecosystem focus vs. species
- ▣ Sustainability- ecological, social, economic
- ▣ Certainty where possible
- ▣ Collaborative – advisory group
- ▣ Fast, cost-efficient, adaptable, nimble
- ▣ Large enough scale

QUESTIONS?