

University of Colorado Law School

Colorado Law Scholarly Commons

Workshop on Directional Drilling in the Rocky
Mountain Region (November 13)

2003

11-13-2003

SLIDES: Untitled [Western Resource Advocates]

Mike Chiropolos

Follow this and additional works at: <https://scholar.law.colorado.edu/workshop-on-directional-drilling-rocky-mountain-region>



Part of the [Energy and Utilities Law Commons](#), [Energy Policy Commons](#), [Environmental Health and Protection Commons](#), [Environmental Law Commons](#), [Environmental Policy Commons](#), [Hydraulic Engineering Commons](#), [Natural Resource Economics Commons](#), [Natural Resources Law Commons](#), [Natural Resources Management and Policy Commons](#), [Oil, Gas, and Mineral Law Commons](#), [Property Law and Real Estate Commons](#), [Science and Technology Law Commons](#), and the [State and Local Government Law Commons](#)

Citation Information

Chiropolos, Mike, "SLIDES: Untitled [Western Resource Advocates]" (2003). *Workshop on Directional Drilling in the Rocky Mountain Region (November 13)*.
<https://scholar.law.colorado.edu/workshop-on-directional-drilling-rocky-mountain-region/6>

Reproduced with permission of the Getches-Wilkinson Center for Natural Resources, Energy, and the Environment (formerly the Natural Resources Law Center) at the University of Colorado Law School.



Figure 1. Photograph taken in 2002 of a gas well being drilled on a typical well pad. Note pits containing drilling fluids, equipment trailers, and access road.

Jonah Field – 1986



Figure 2. Jonah field before discovery, as it appeared on a Landsat satellite image taken August 27, 1986. Only two dirt roads are visible in the area, intersecting in the lower left.

Jonah Field – 1999



Figure 3. Landsat image of the same area, taken on October 26, 1999, showing that wells and connecting roads had been installed with 80-acre spacing.

Jonah Field – 2001

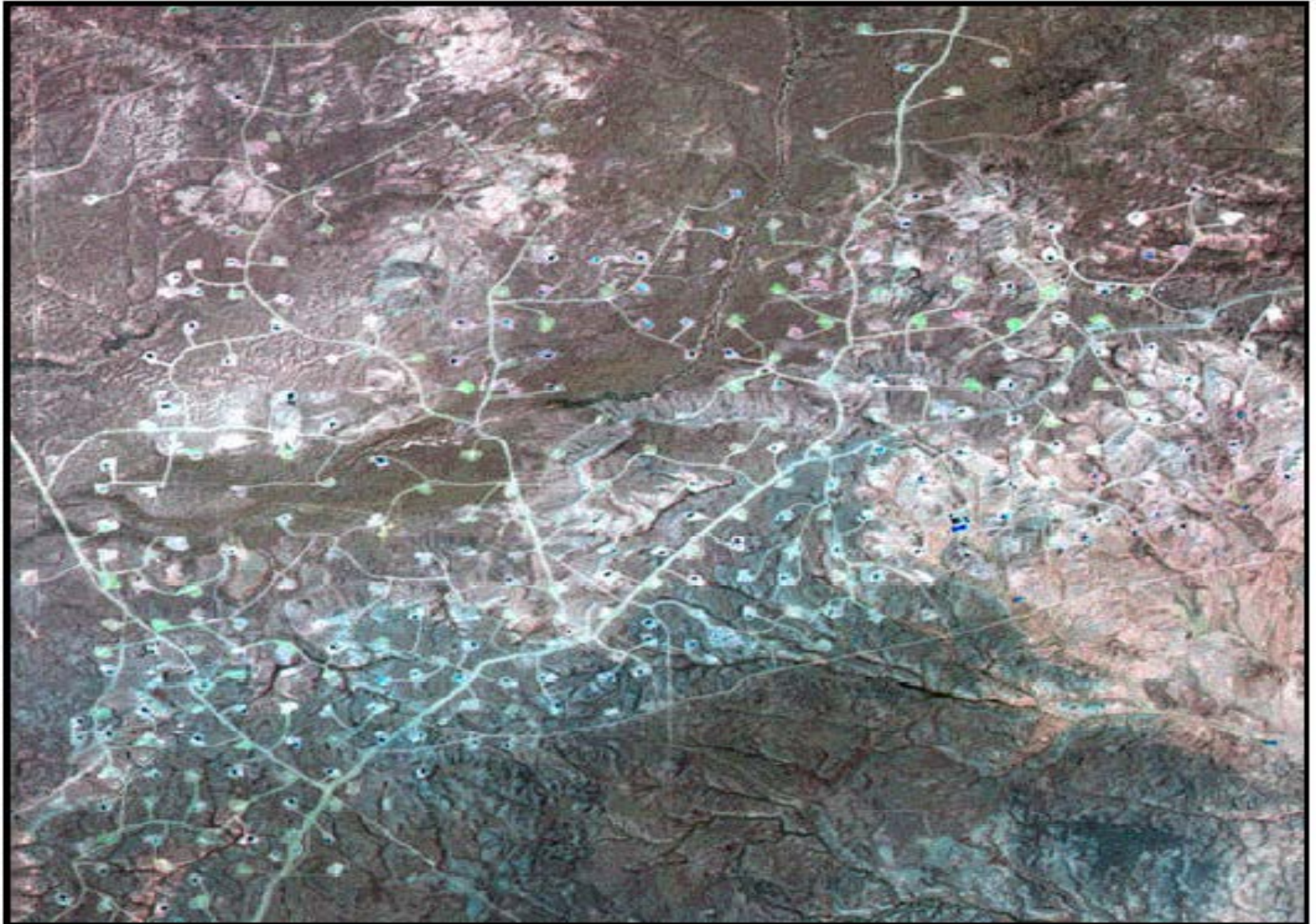


Figure 4. Landsat image taken on August 28, 2001. 40-acre spacing has been approved, and more than 300 gas wells have been drilled in the Jonah field at this point.

Jonah Field – 2002

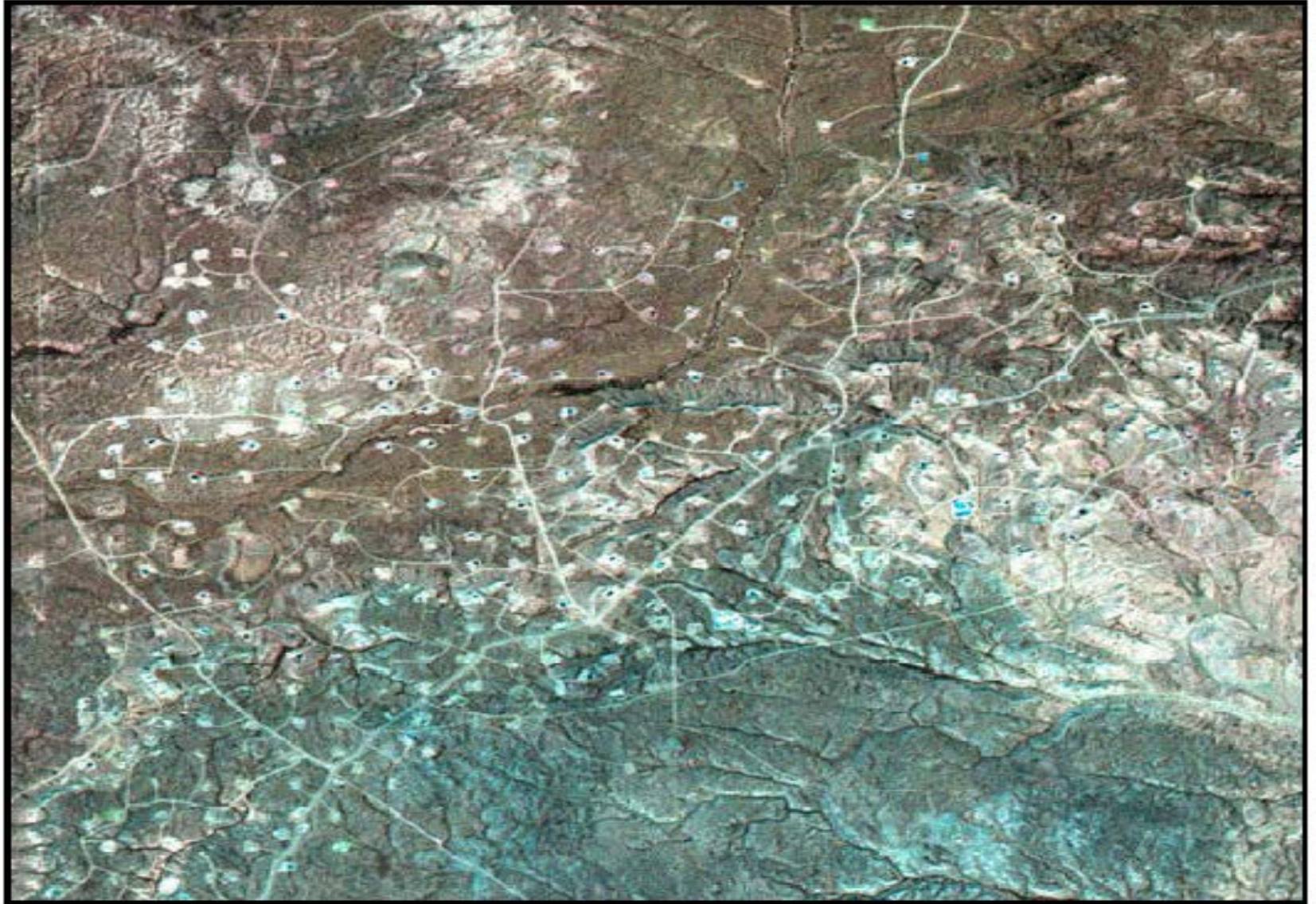


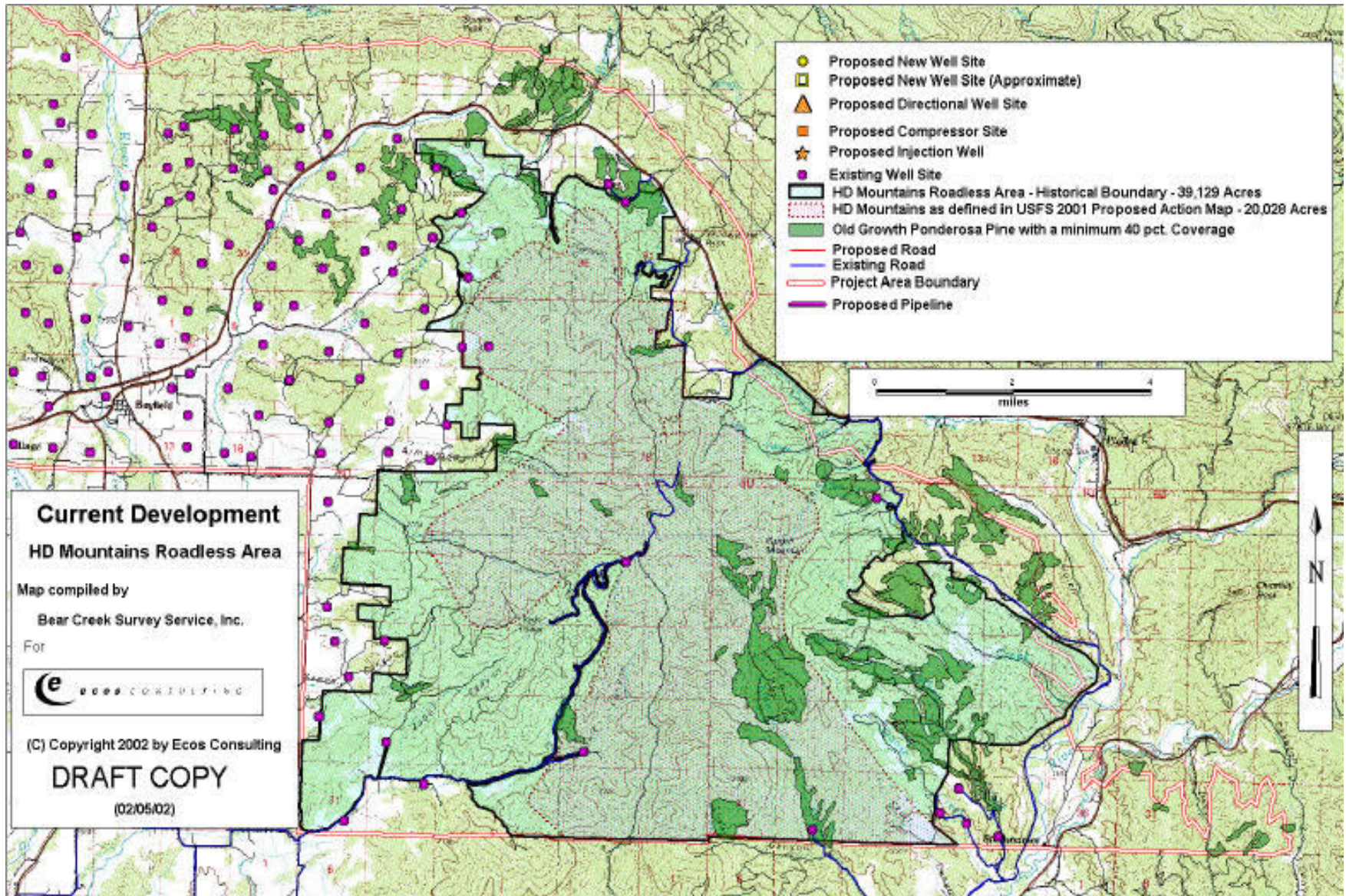
Figure 5. Landsat image taken on October 18, 2002. By this time Jonah field now contains more than 400 gas wells and hundreds of miles of connecting roads. If the infill-drilling proposal is approved, up to 850 new well pads will be added to the field.

ROAN PLATEAU

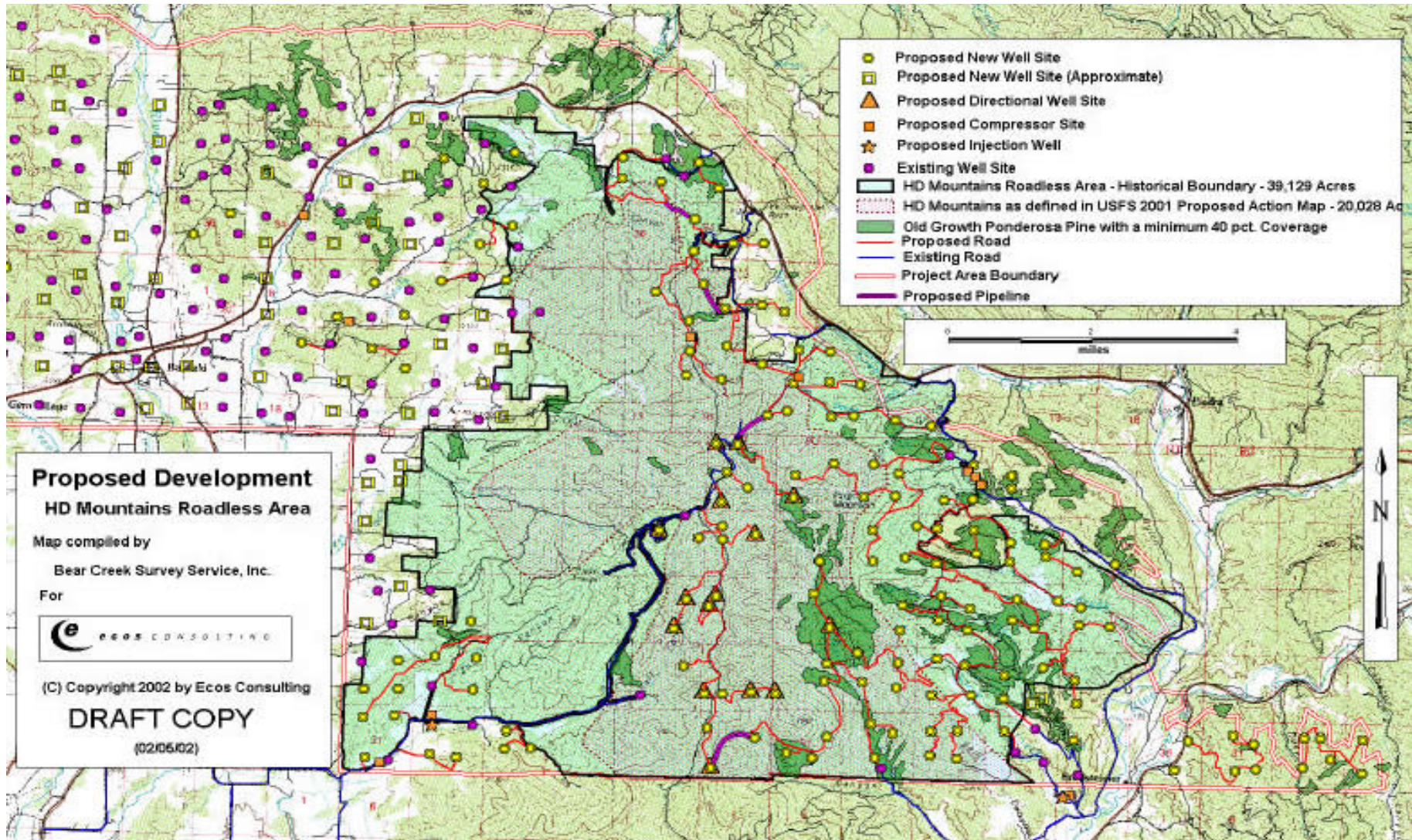


Cliffs of the Roan Plateau, northwest Colorado

HD MOUNTAINS, SAN JUAN NATL FOREST



HD MTNS, POTENTIAL 200 WELL PROJECT





Wind carved rock towers in northern New Mexico's Bisti Badlands



Burning Man before being burned,
Black Rock/High Rock NCA, Nevada