

University of Colorado Law School

## Colorado Law Scholarly Commons

---

Community-Owned Forests: Possibilities,  
Experiences, and Lessons Learned (June 16-19)

2005

---

6-17-2005

### SLIDES: Public Funding Sources in MT: State Funding Sources, 3 Partnerships Examples

Alan Wood

Follow this and additional works at: <https://scholar.law.colorado.edu/community-owned-forests>



Part of the [Business Organizations Law Commons](#), [Forest Management Commons](#), [Land Use Law Commons](#), [Natural Resource Economics Commons](#), [Natural Resources and Conservation Commons](#), [Natural Resources Law Commons](#), [Natural Resources Management and Policy Commons](#), [Property Law and Real Estate Commons](#), [Public Administration Commons](#), [Public Policy Commons](#), [Recreation, Parks and Tourism Administration Commons](#), [State and Local Government Law Commons](#), and the [Urban Studies and Planning Commons](#)

---

#### Citation Information

Wood, Alan, "SLIDES: Public Funding Sources in MT: State Funding Sources, 3 Partnerships Examples" (2005). *Community-Owned Forests: Possibilities, Experiences, and Lessons Learned (June 16-19)*. <https://scholar.law.colorado.edu/community-owned-forests/30>

Reproduced with permission of the Getches-Wilkinson Center for Natural Resources, Energy, and the Environment (formerly the Natural Resources Law Center) at the University of Colorado Law School.

# **Public Funding sources in MT**

**State Funding Sources**

**3 Partnerships Examples**



# Habitat Montana



Purpose – Conserve Montana's wildlife resources and pass them intact to future generations



# Montana Fish, Wildlife & Parks Wildlife Habitat Conservation Programs



## Habitat Montana

**Big game license sales**

**Migratory Bird Stamp**

**Wildlife Mitigation**

# Habitat Montana License Sales



**Since 1987:**

**\$51 million, \$3 million/year**

- **220,000 acres CE, \$22.3 million**
- **37,000 acres fee, \$15.3 million**
- **11,000 acres leased, \$27,000/year**

# Habitat Montana Wildlife Mitigation



**Purpose – Protect, mitigate and enhance wildlife and wildlife habitat affected by the construction of Libby and Hungry Horse Dams**

- **Riparian Wetlands**
- **Palouse Prairie**
- **Upland Forest**

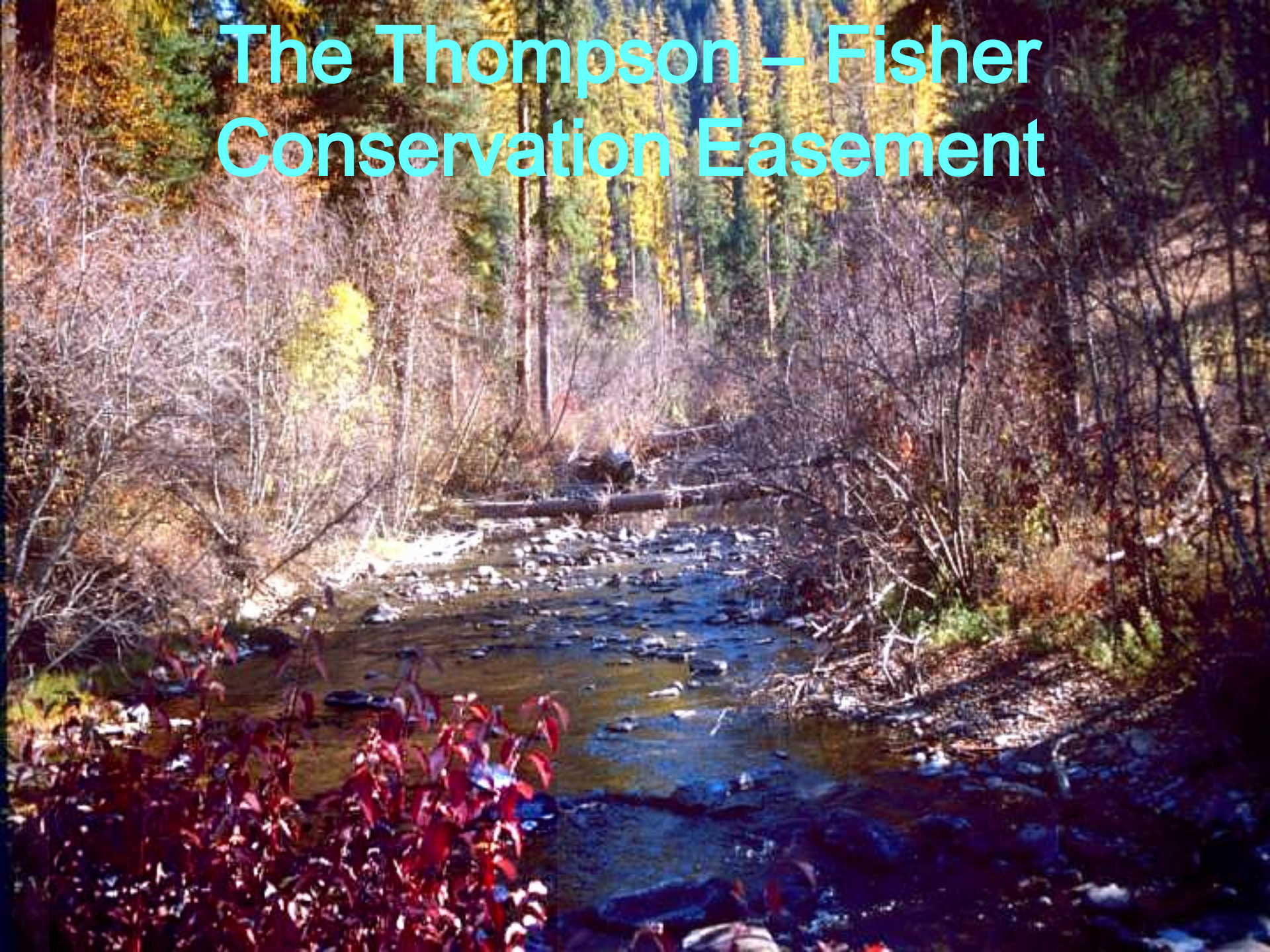
# Wildlife Mitigation



## Over the past 25 years:

- 143,250 acres CE, \$6.1 million
- 33,540 acres enhance, \$1.6 million
- 3,300 acres fee, \$2.4 million
- 12,800 acres partnership, \$311,000

# The Thompson – Fisher Conservation Easement





# Project Vicinity Map

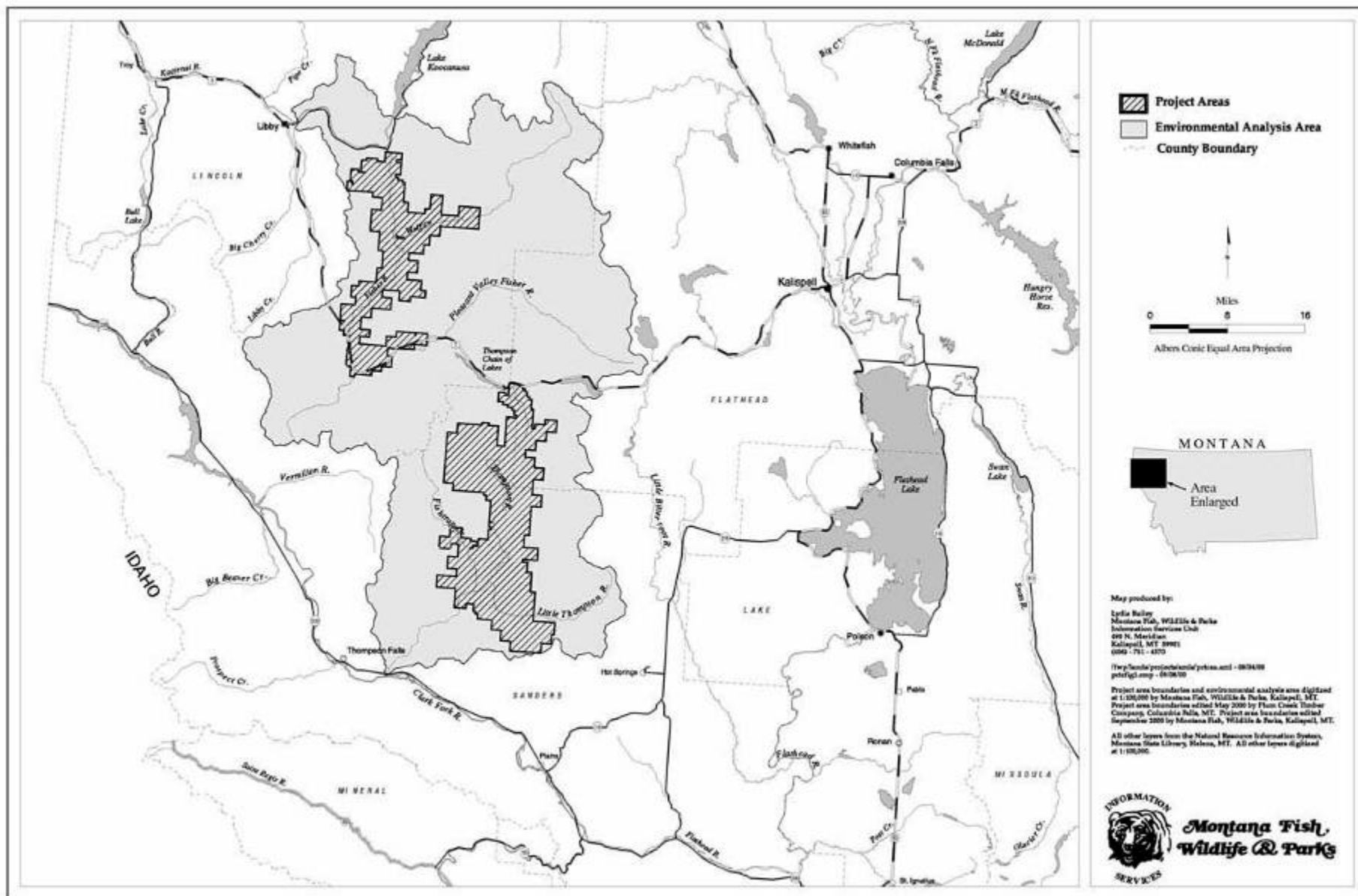
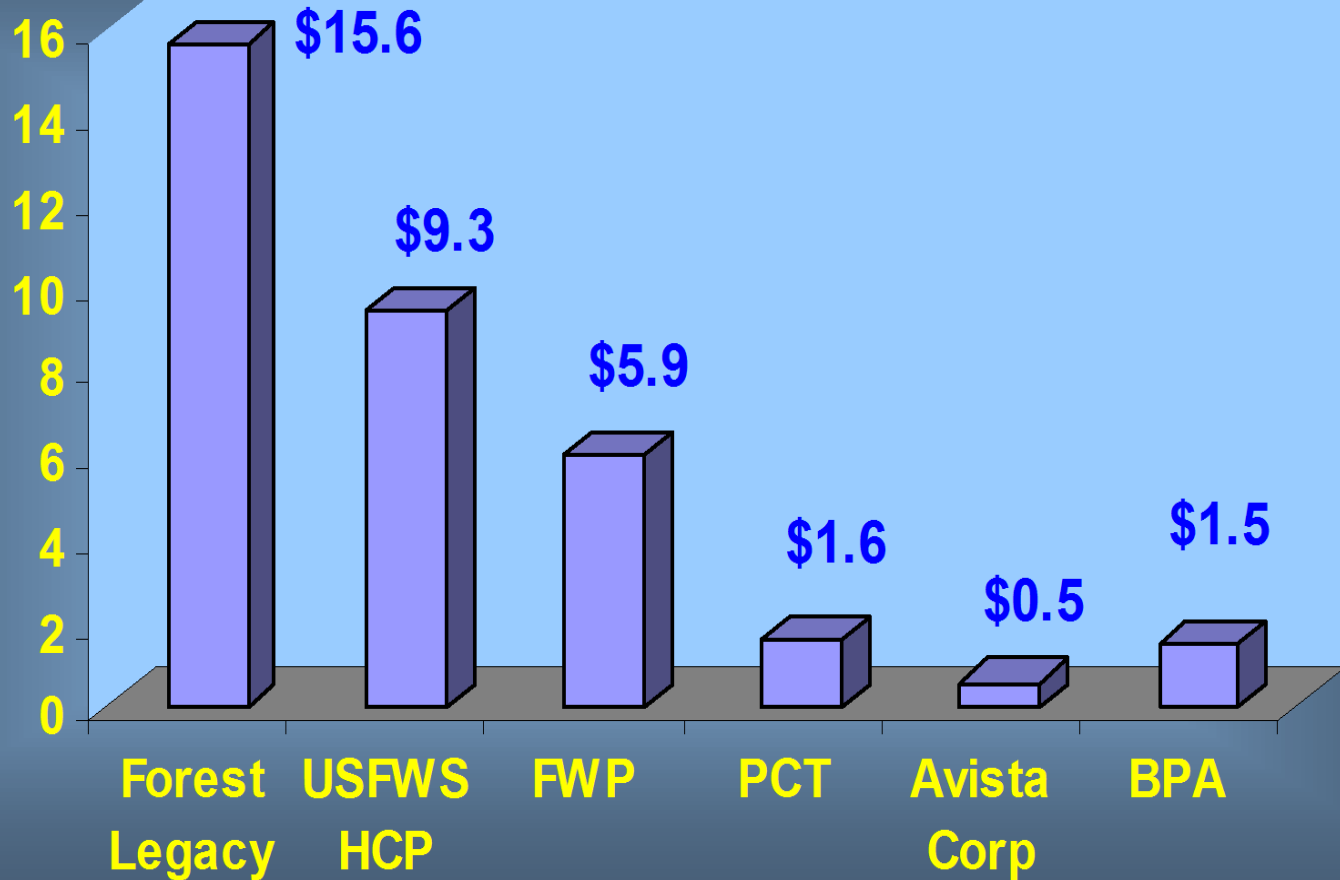


Figure 1. Project area locations.

# Funding Partners

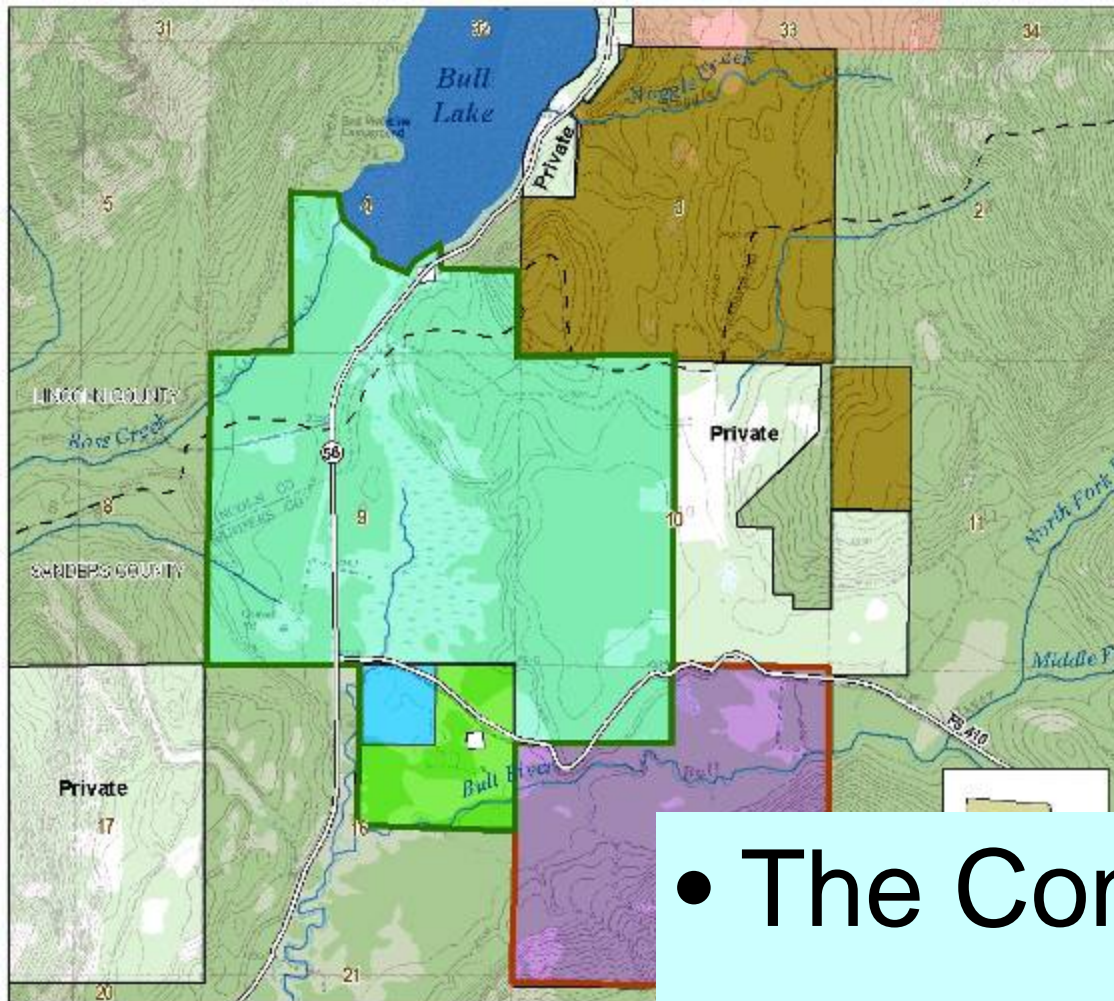
Millions





# The Bull River Wildlife Management Area

Avista Corporation Mitigation Project



- FWP Purchase of Plum Creek Timber Company Land
- Avista Conservation Easement Donation (HCP Match)
- Avista Fee Title Donation to FWP (NAWCA Funded)
- Avista/TCF Land for FWP Fee Title Purchase
- Proposed Bull River WMA Boundary
- Proposed FWP Conservation Easement Boundary

- The Conservation Fund
- HCP \$4.6 million
- Avista \$2.1 million
- NAWCA \$50,000



# **Weaver Slough- Partners Total \$2.4 million**

- **NRCS Farm and Ranch**
- **BPA**
- **NAWCA**
- **MT Ag Heritage**
- **Migratory Bird Stamp**
- **Landowner Donation**