

University of Colorado Law School

## Colorado Law Scholarly Commons

---

The Future of Natural Resources Law and Policy  
(Summer Conference, June 6-8)

2007

---

6-7-2007

### SLIDES: A Case Study of the Roan Plateau Area

Mary Viviano

Follow this and additional works at: <https://scholar.law.colorado.edu/future-of-natural-resources-law-and-policy>



Part of the Administrative Law Commons, Animal Law Commons, Biodiversity Commons, Climate Commons, Constitutional Law Commons, Courts Commons, Dispute Resolution and Arbitration Commons, Energy and Utilities Law Commons, Energy Policy Commons, Environmental Law Commons, Environmental Policy Commons, Forest Management Commons, Jurisdiction Commons, Land Use Law Commons, Law and Society Commons, Legal Education Commons, Legal Ethics and Professional Responsibility Commons, Litigation Commons, Natural Resource Economics Commons, Natural Resources and Conservation Commons, Natural Resources Law Commons, Natural Resources Management and Policy Commons, Oil, Gas, and Energy Commons, Oil, Gas, and Mineral Law Commons, Peace and Conflict Studies Commons, President/Executive Department Commons, Property Law and Real Estate Commons, Science and Technology Law Commons, State and Local Government Law Commons, Sustainability Commons, Torts Commons, Urban Studies and Planning Commons, Water Law Commons, and the Water Resource Management Commons

---

#### Citation Information

Viviano, Mary, "SLIDES: A Case Study of the Roan Plateau Area" (2007). *The Future of Natural Resources Law and Policy (Summer Conference, June 6-8)*.

<https://scholar.law.colorado.edu/future-of-natural-resources-law-and-policy/13>

Reproduced with permission of the Getches-Wilkinson Center for Natural Resources, Energy, and the Environment (formerly the Natural Resources Law Center) at the University of Colorado Law School.



PANEL:

The Future of Mineral Development on  
Federal Lands in the United States  
**A Case Study of the Roan Plateau Area**

Mary Viviano

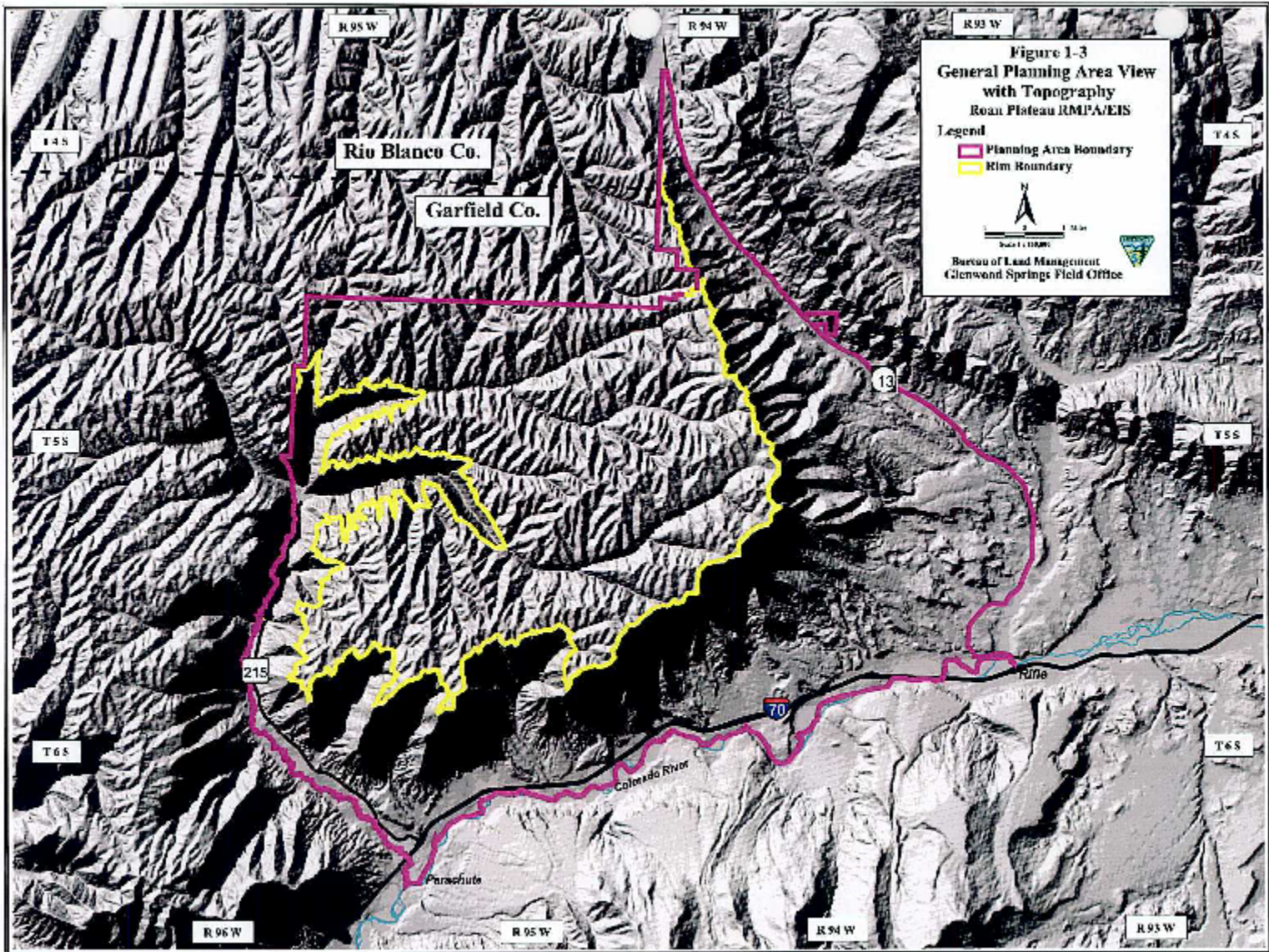
June 7, 2007

# COLORADO OPERATIONS









# ENCANA NORTH PARACHUTE RANCH



Western Portion of Roan Plateau Planning Area, includes upper and lower plateau topography; Already significant activity that is environmentally sound and designed to minimize impacts

- 46,145 surface acres
- 25,889 mineral acres, 20,000± leased acres
- 244 wells drilled to date
- Pad Drilling: Max. 28 wells/pad, located mostly in valleys

# ENVIRONMENTAL STUDIES AT NPR



- Water quality monitoring
  - 11 monitoring wells, 21 surface water locations, 24 springs sampled quarterly for compounds, metals, sediment
- 2 permanent air monitoring stations - real time data
- Biological studies on wildlife species w/DOW: greater sage grouse, raptors, mule deer, elk, peregrine falcon & owls
- Habitat improvement areas for sage grouse leks, deer & elk calving areas
- Baseline macro - invertebrate sampling for aquatic habitat and water quality
- Wildlife habitat/livestock grazing management plan
- Noxious weed control





# Colorado Outstanding Operator Awards 2006

- Given Annually by COGCC
- ECA recognized at NPR for:
  - 3-Phase Gathering System
  - Water Distribution System
  - Community Relations Efforts
- First Ever Joint Award Given by DOW & COGCC
  - ECA Sage Grouse Efforts at NPR



# OPERATIONS at NPR



- EnCana staff wildlife biologist
- Perform DOW baseline studies on all area wildlife
- Increase in sage grouse lek activity
- Raptor nests identified & monitored
- Perform onsite inspection – all locations
- Model many BLM/DOW BAPs

# 3 Phase Gathering



- Gas, oil, produced water gathered to central facility
- Water treatment and distribution system:
  - 2003 Mamm Creek; 2004 North Parachute Ranch; 2005 High Mesa Field
- Treats and recycles produced water for well drilling and completion operations
- Current capability 90% of all produced water is treated and recycled

# WATER DISTRIBUTION SYSTEM



- In 2006 7.7 million bbls. recycled
- Significant reduction of truck traffic, dust and noise
- 75% of water transports eliminated
- Working with DNR on beneficial use possibilities for excess water

# ENCANA COMMENTS ON BLM PROPOSED PLAN AMENDMENT for ROAN



- Undivided unit arrangement with clustered and sequential exploration rather than over entire area - one geographic area at a time
- Phased & limited development (production?) restrictions — 1% disturbance/350 acres
- Lease stipulations

BLM ANALYSIS WAS THOROUGH AND DEFENSIBLE  
UNDER NEPA AND RELATED STATUTES

# FUTURE FOR PUBLIC LANDS



- NPR shows mineral development can successfully occur in environmentally sensitive areas in partnership with Agency experts
- Appeals will continue of Agency's NEPA/Planning process, no matter how rigorous, reflecting national political/policy debates on Energy Policy
- Uncertainty/delay/pace of development restrictions all raise costs of exploration and ultimately, energy production