

University of Colorado Law School

Colorado Law Scholarly Commons

Shifting Baselines and New Meridians: Water, Resources, Landscapes, and the Transformation of the American West (Summer Conference, June 4-6)

2008

6-4-2008

SLIDES: Paying the Price for Power: When L.A. Turns on the Lights, Northwestern New Mexico Feels It

Jonathan Thompson

Follow this and additional works at: <https://scholar.law.colorado.edu/water-resources-and-transformation-of-American-West>



Part of the Administrative Law Commons, Animal Law Commons, Aquaculture and Fisheries Commons, Biodiversity Commons, Climate Commons, Energy and Utilities Law Commons, Energy Policy Commons, Environmental Health and Protection Commons, Environmental Law Commons, Environmental Policy Commons, Indian and Aboriginal Law Commons, Land Use Law Commons, Law and Politics Commons, Law and Society Commons, Legal Ethics and Professional Responsibility Commons, Natural Resources and Conservation Commons, Natural Resources Law Commons, Natural Resources Management and Policy Commons, Oil, Gas, and Energy Commons, State and Local Government Law Commons, Sustainability Commons, Urban Studies and Planning Commons, Water Law Commons, and the Water Resource Management Commons

Citation Information

Thompson, Jonathan, "SLIDES: Paying the Price for Power: When L.A. Turns on the Lights, Northwestern New Mexico Feels It" (2008). *Shifting Baselines and New Meridians: Water, Resources, Landscapes, and the Transformation of the American West (Summer Conference, June 4-6)*.
<https://scholar.law.colorado.edu/water-resources-and-transformation-of-American-West/20>

Reproduced with permission of the Getches-Wilkinson Center for Natural Resources, Energy, and the Environment (formerly the Natural Resources Law Center) at the University of Colorado Law School.

Paying the price for power

When L.A. Turns on the lights,
Northwestern New Mexico feels it.

By Jonathan Thompson

High Country News

Photos: Thompson & Google Earth





WHOA!!
MUTTON LOVERS
HEAVEN





WAKE UP YOU BUNCH OF NUTS
 WE ALL LIVE
DOWNSTREAM

Americans living near coal-fired power plants are exposed to higher radiation doses than those living near nuclear power plants that meet government regulations
<http://www.ornl.gov/info/ornlreview/rev26-34/text/cpmain.html>

SHOWING OUR CONCERN FOR OUR ENVIRONMENT

BILL
JEFF
MIKE
JIM

SAN JUAN RIVER

SHUMWAY ARROYO

Public Service Company of New Mexico
Bill Jeff Mike Jim







PEANUT
BUTTER
CUT

HAND
RE

ICE

RABBITS GOATS
CHICKS AVON AT
DOUBLE W DE
598-5291





In the early 1900s, San Juan County had 50,000 apple trees.

Today, it has just a few orchards, 12,000 producing gas and oil wells, and is by far the leading producer of natural gas in New Mexico.

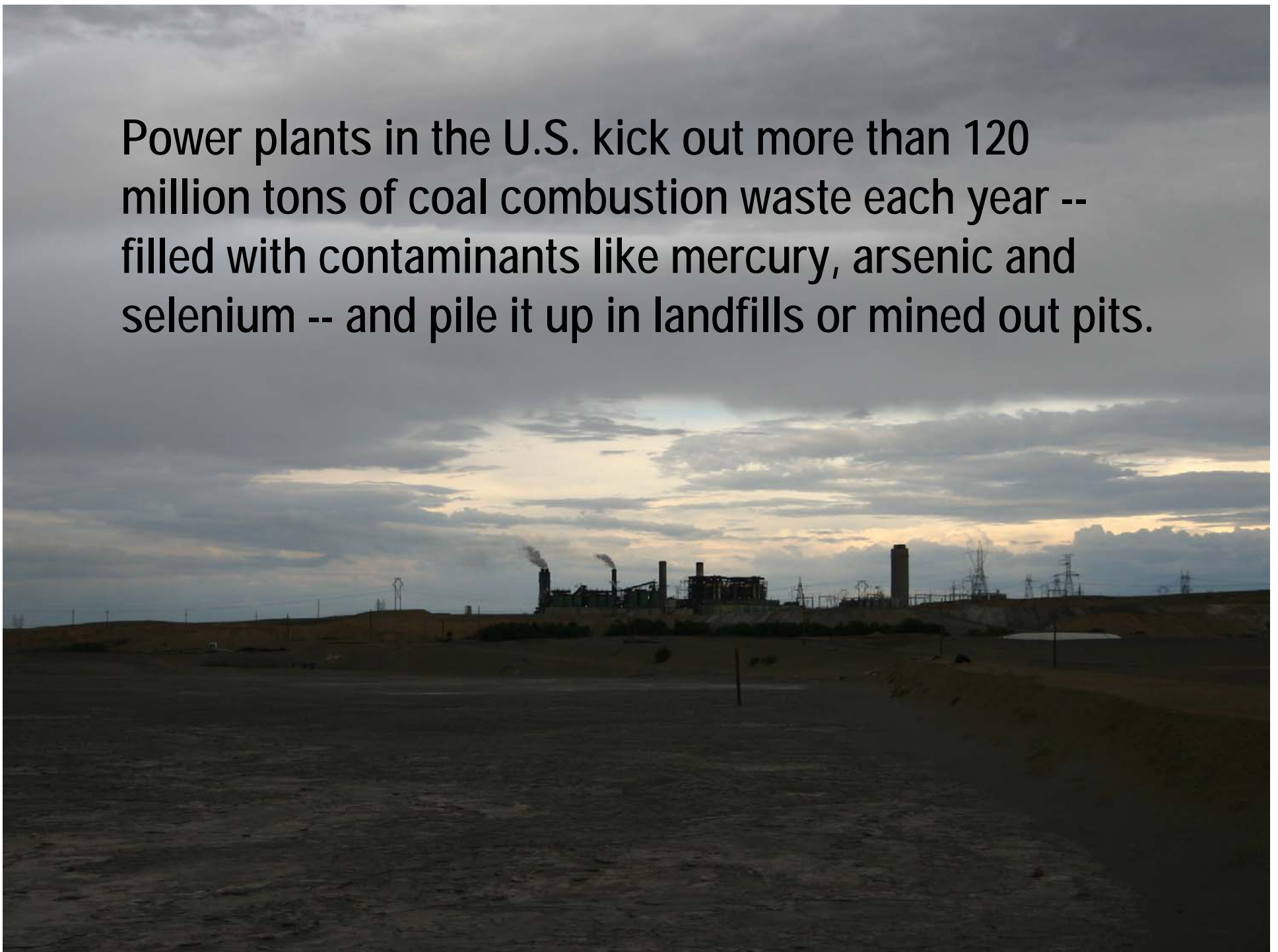
The San Juan Basin contains more than 9 billion tons of recoverable coal.



Two power plants, less than 10 miles apart, burn 15 million tons of coal each year to power more than 4 million homes in the Southwest.

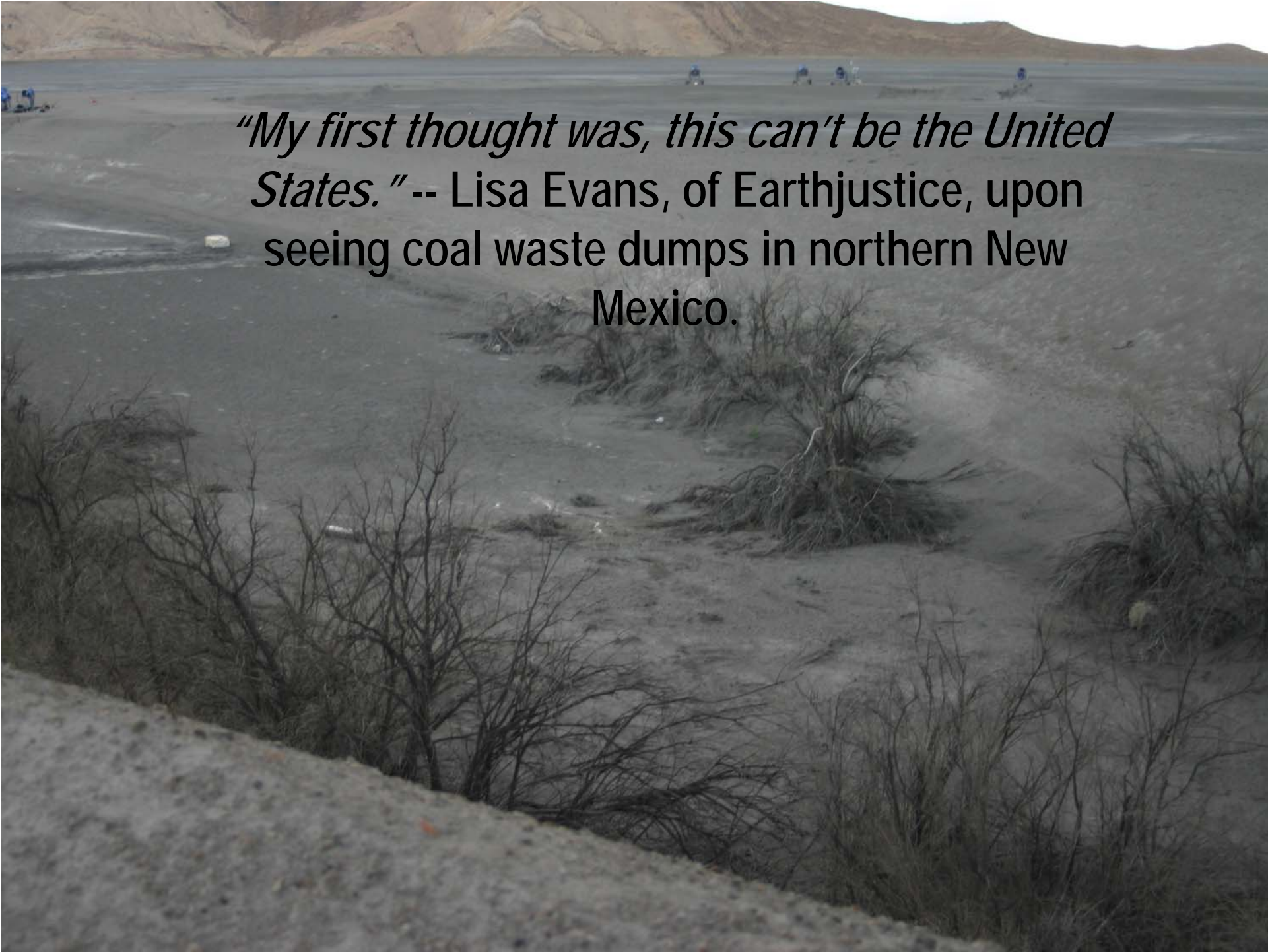


Power plants in the U.S. kick out more than 120 million tons of coal combustion waste each year -- filled with contaminants like mercury, arsenic and selenium -- and pile it up in landfills or mined out pits.



Some 25 million tons of coal waste sits in giant piles adjacent to the Four Corners Power Plant on the Navajo Nation.





"My first thought was, this can't be the United States." -- Lisa Evans, of Earthjustice, upon seeing coal waste dumps in northern New Mexico.



1696 m

36°41'25.23" N 108°29'46.23" W elev 1622 m

© 2008 Tele Atlas

Image © 2008 DigitalGlobe
Streaming 100%

NO TRASH DUMPING

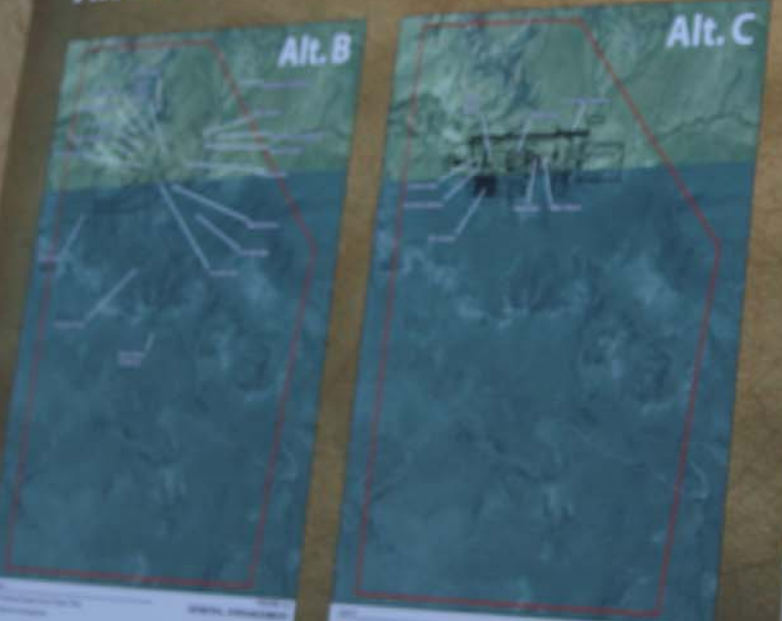


"WALK IN BEAUTY"



Desert Rock Energy Project

General Arrangement of Alternatives B and C



Tom
Sithe Global










**SAVE
MUTTON STEW
SAY NO!
TO DESERT
ROCK**

**Power Plants Pollute the AIR, WATER, and the LAND
WE BREATHE THE AIR, WE DRINK THE WATER, WE LIVE ON THE LAND
& SO DO SHEEP!**





"The community in that part of the world is being assaulted and the environment is being assaulted by extremely problematic pollution. The power plants dominate the skyline of northwestern New Mexico, and the amount of flyash that has been disposed of on the ground is breathtaking. I have never seen it to that scale before."

– attorney Jan Schlichtmann