

University of Colorado Law School

## Colorado Law Scholarly Commons

---

Best Management Practices (BMPs): What?  
How? And Why? (May 26)

2011

---

5-26-2011

### SLIDES: Master Development Plans (MDPs): Oil and Gas Projects

Mary Bloomstran

Follow this and additional works at: <https://scholar.law.colorado.edu/best-management-practices-bmps>



Part of the [Administrative Law Commons](#), [Animal Law Commons](#), [Climate Commons](#), [Energy and Utilities Law Commons](#), [Energy Policy Commons](#), [Environmental Health and Protection Commons](#), [Environmental Law Commons](#), [Environmental Monitoring Commons](#), [Environmental Policy Commons](#), [Natural Resource Economics Commons](#), [Natural Resources and Conservation Commons](#), [Natural Resources Law Commons](#), [Natural Resources Management and Policy Commons](#), [Oil, Gas, and Energy Commons](#), [Oil, Gas, and Mineral Law Commons](#), [Science and Technology Law Commons](#), [State and Local Government Law Commons](#), [Urban Studies and Planning Commons](#), [Water Law Commons](#), and the [Water Resource Management Commons](#)

---

#### Citation Information

Bloomstran, Mary, "SLIDES: Master Development Plans (MDPs): Oil and Gas Projects" (2011). *Best Management Practices (BMPs): What? How? And Why? (May 26)*.  
<https://scholar.law.colorado.edu/best-management-practices-bmps/3>

Reproduced with permission of the Getches-Wilkinson Center for Natural Resources, Energy, and the Environment (formerly the Natural Resources Law Center) at the University of Colorado Law School.

# **Master Development Plans (MDPs)**

**Oil and Gas Projects**

# When is an MDP Appropriate?

- Large scale oil and gas projects
- One or more leases
- 2 to 5 Year Development Horizon
- Single or multiple operators
- BLM is developing policy on when it is appropriate

# When is an MDP Appropriate?

Exploration and/or development activities can be combined

BMPs can be applied to avoid, minimize, or mitigate impacts

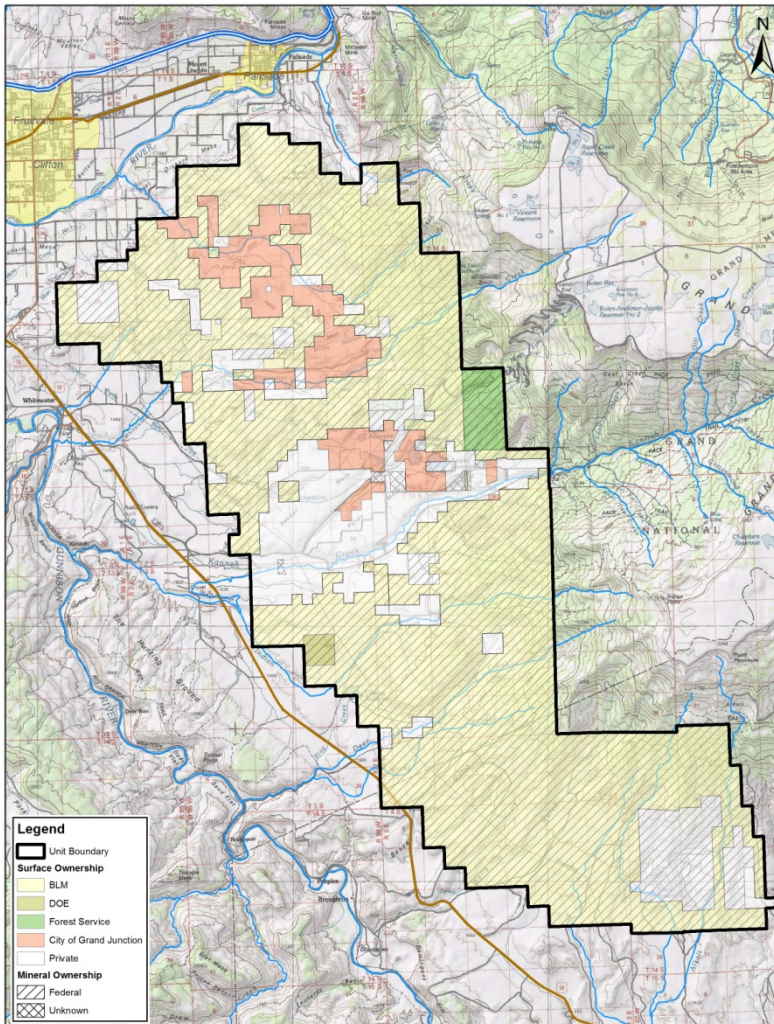
# Best Management Practices

- Gathering System/Centralized Facilities
- Multi – well pads
- Transportation Planning
- Schedule/Sequence
- Concentrated Development

# Level of Activity in the MDP?

- Project Definition
- Known vs Unknown?
- Not necessary to include all potential future development in an area
- Apply BMPs effectively

# Example - Whitewater Unit



- Surface/Mineral

- Ownership

- Fed/Fed 72.38%

- Pri/Pri 12.63%

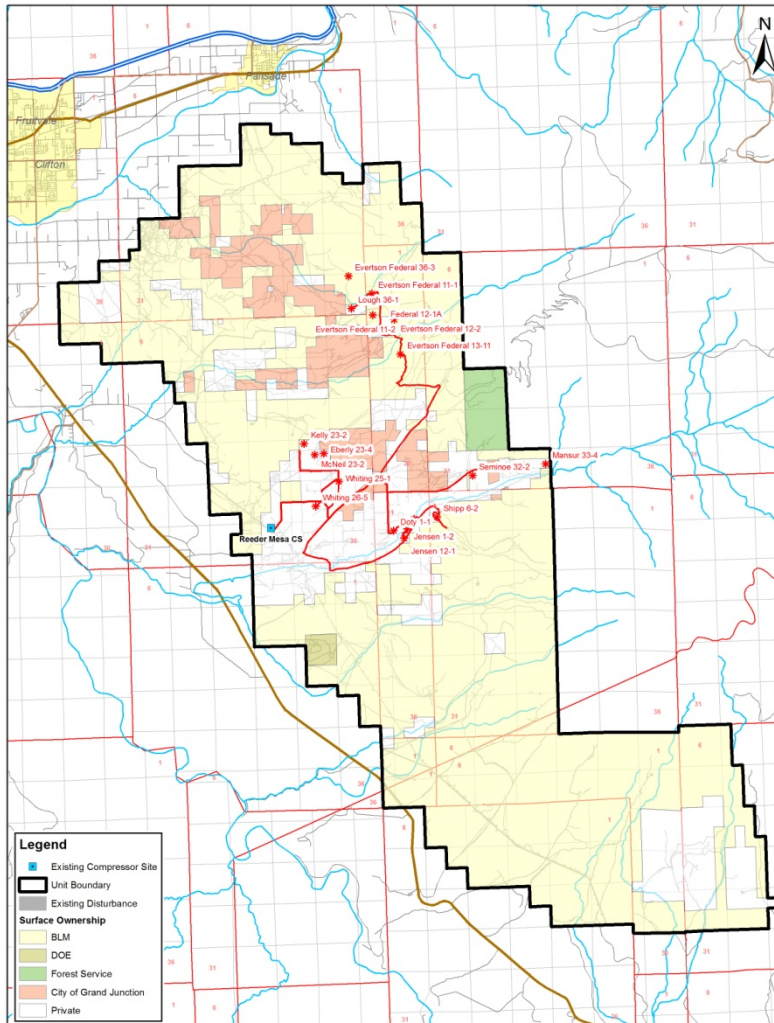
- GJ/GJ 7.96%

- Pri/Fed 6.62%

- Fed/Pri 0.41%

90,000 acres

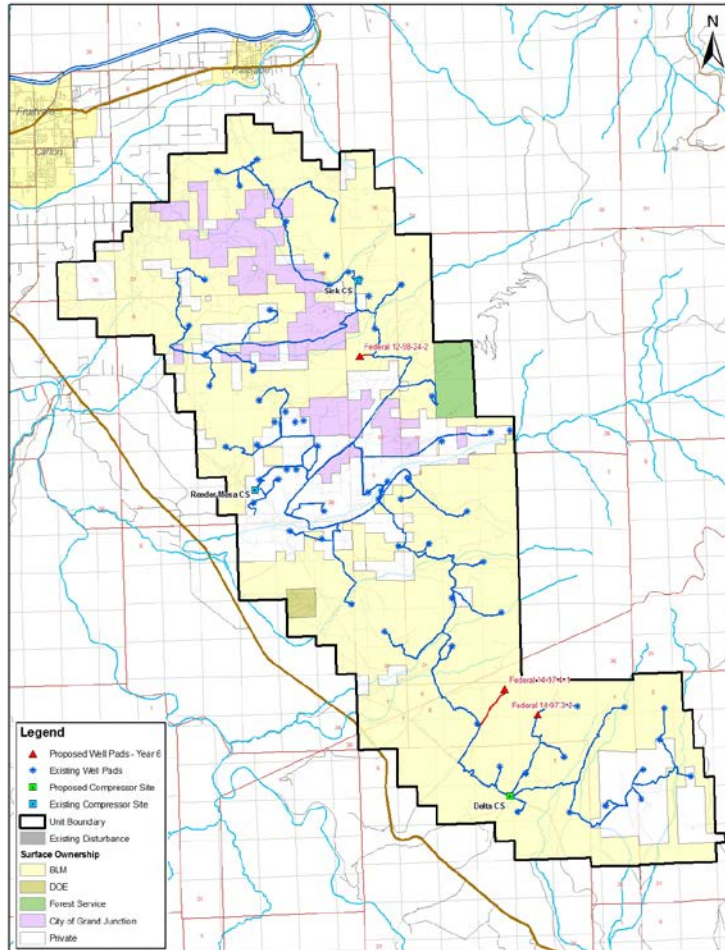
# Existing Oil and Gas Development



- Existing well pads private reclaimed
- No current gas production\*



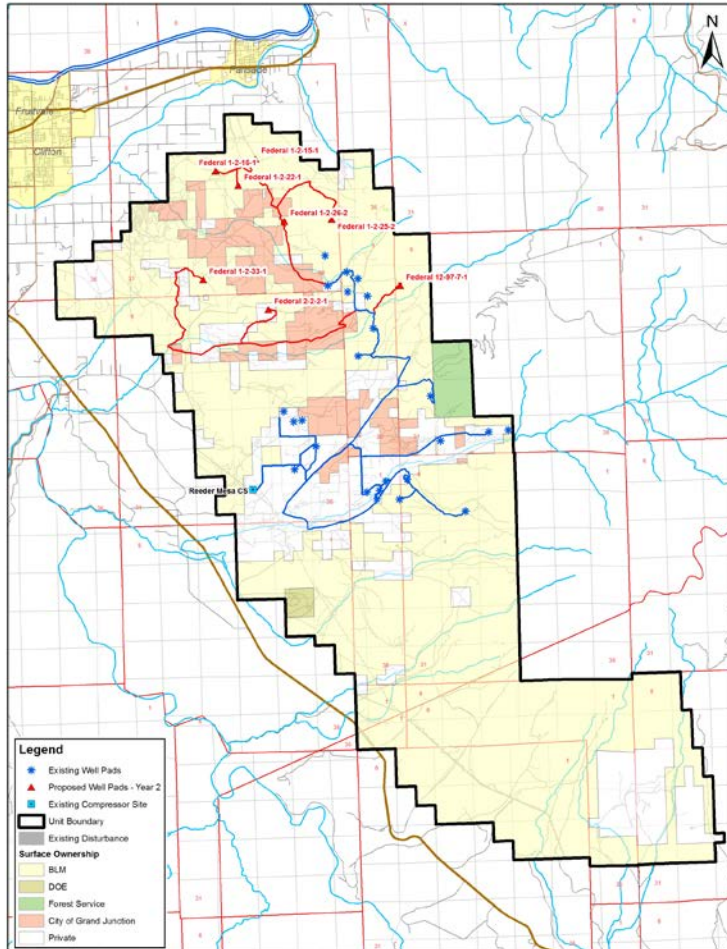
# Proposed Action – Not Reasonable



- 49 Proposed Well Pads/500wells

Multi Well Pads  
Gathering Systems  
Remote Telemetry  
Existing Roads

# Proposed Action - Reasonable



- 12 Well Pads
- 12 to 20 Wells

Multi Well Pads  
Gathering Systems  
Remote Telemetry  
Existing Roads

Site-Specific Surveys

# What to include in an MDP

## Project Description – detail, detail, detail

- Access (existing, upgrades required?)
- Disturbance – acres (roads, pads, pipelines, facilities)
- Location of proposed disturbance
- Water supply, water use, and water disposal
- Schedule (sequence)
- Transportation planning - traffic
- Site-specific surveys (cultural, wetland, biological)

# Incorporate BMPs into Proposal

- Review BLM GIS data – issues
- Review the Land Use Plan - RMP
- Review and incorporate Standard Conditions
  
- Operator/BLM Communications
- Review public scoping comments and incorporate BMPs where appropriate

# Update the MDP

- MDP becomes one big BMP
- Update throughout the NEPA process
  - Public Scoping
  - Communication with BLM/Contractor
  - Public Comment
- MDP Must Match the NEPA Document

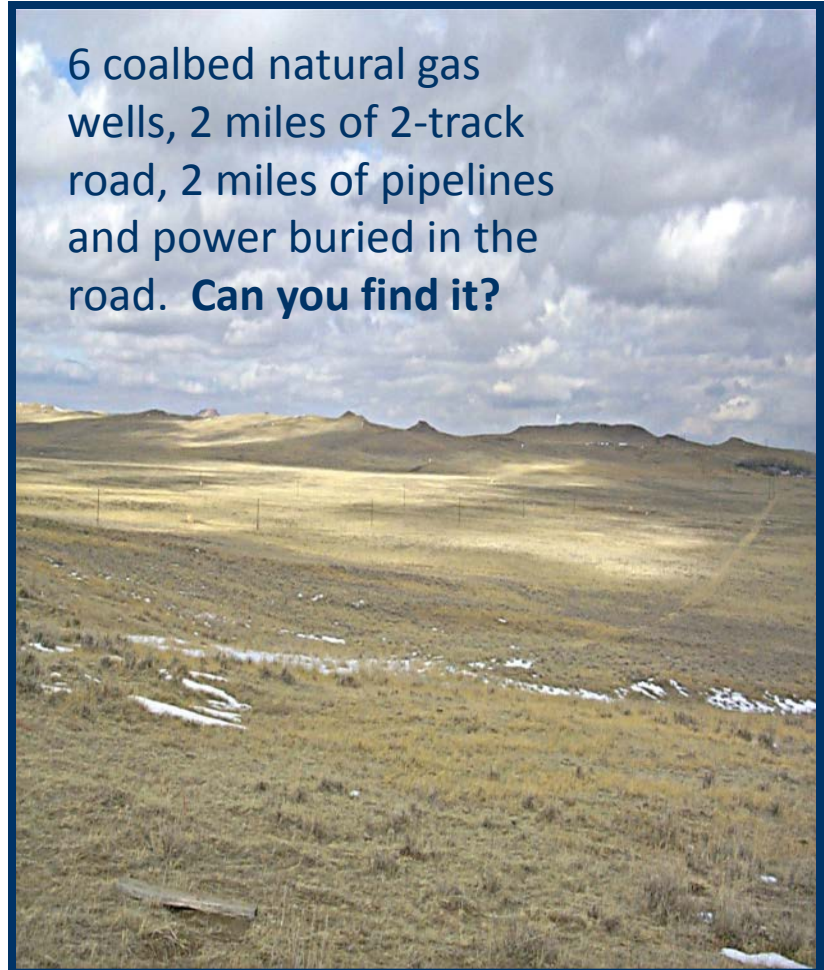
# Comprehensive MDP

- BMPs already incorporated in the Proposal
- Avoid a long list of Conditions of Approval
- Revise throughout the NEPA process

## Traditional Development vs. MDP/BMP Development?



6 coalbed natural gas wells, 2 miles of 2-track road, 2 miles of pipelines and power buried in the road. **Can you find it?**



**Objective:** Using Planning To Minimize the Footprint of Oil and Gas Operations



What is the impact poor planning?



**Watershed Boundary**



**Short Term Disturbance**



**Short Term Disturbance (Pipelines)**



**Long Term Disturbance (Roads)**



**Long Term Disturbance (Well Pads)**



**Long Term Disturbance (Compressors)**





# Planned vs. Unplanned Development

- **Planning Reduces**
  - Disturbance
  - Habitat Loss
  - Soil Erosion
  - Visual Impacts
- **Planning Saves**
  - Money

Each action was permitted independently without an overall development plan →

This area could have benefited from a **Master Development Plan** to reduce approximately 75% of the surface disturbance.



# Planned Development Avoid Multiple Points of Access



This well pad has three points of well access.



Sagebrush  
Habitat

## Example: One Point of Access for Every Well Pad



Common  
Water, Gas, Electricity, Road Corridor

# Summary

Select Reasonable Scale for MDP

Define the Project

Know the Resources

Incorporate the BMPs

Continue to revise/adapt throughout the process