

University of Colorado Law School

Colorado Law Scholarly Commons

Endangered Species Act Congressional Field
Tour (August 17-19)

2005

8-18-2005

Day 2: Thursday, 18 August 2005: Canada Lynx Reintroduction

Gary Skiba

Rob Edward

Bonnie Kline

Follow this and additional works at: <https://scholar.law.colorado.edu/endangered-species-act-congressional-field-tour>



Part of the [Animal Law Commons](#), [Biodiversity Commons](#), [Environmental Law Commons](#), [Environmental Policy Commons](#), [Natural Resources and Conservation Commons](#), [Natural Resources Law Commons](#), [Natural Resources Management and Policy Commons](#), and the [State and Local Government Law Commons](#)

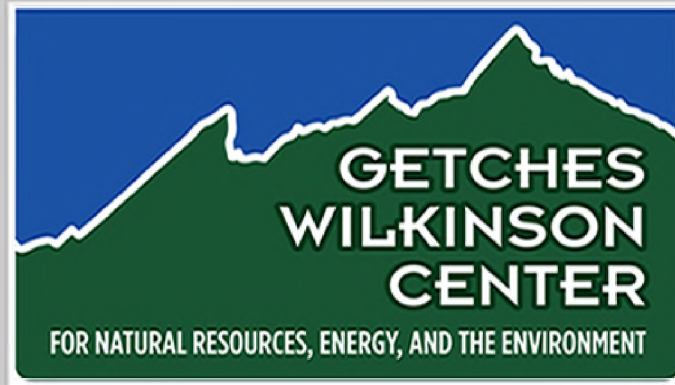
Citation Information

Skiba, Gary; Edward, Rob; and Kline, Bonnie, "Day 2: Thursday, 18 August 2005: Canada Lynx Reintroduction" (2005). *Endangered Species Act Congressional Field Tour (August 17-19)*. <https://scholar.law.colorado.edu/endangered-species-act-congressional-field-tour/9>

Reproduced with permission of the Getches-Wilkinson Center for Natural Resources, Energy, and the Environment (formerly the Natural Resources Law Center) at the University of Colorado Law School.



William A. Wise Law Library
COLORADO **LAW**
UNIVERSITY OF COLORADO **BOULDER**



Getches-Wilkinson Center Collection

*Day 2: Thursday, 18 August 2005: Canada Lynx
Reintroduction, in ENDANGERED SPECIES ACT
CONGRESSIONAL FIELD TOUR 2005 (Natural Res. Law Ctr.,
Univ. of Colo. Sch. of Law 2005).*

Reproduced with permission of the Getches-Wilkinson
Center for Natural Resources, Energy, and the
Environment (formerly the Natural Resources Law
Center) at the University of Colorado Law School.

Canada Lynx Reintroduction *Crested Butte*

Discussion of state efforts to reintroduce the Canada Lynx and an overview of the state's role in species recovery and the ESA.

Panel:

- **Gary Skiba, Colorado Division of Wildlife**

Gary Skiba, a native of western Pennsylvania, is a Conservation Biologist with the Colorado Division of Wildlife. In his capacity at CDOW, he is responsible for coordinating activities related to Preble's meadow jumping mouse, wolves, small mammal surveys, Gunnison sage-grouse, and miscellaneous other species, as well as coordinating CDOW's wolf management planning effort. Additionally, Gary updates CDOW's threatened and endangered species list, and addresses other issues affecting multiple species. Prior to his current position, Gary has served in a variety of capacities with the Colorado Division of Wildlife, including Acting Leader of the Species Conservation Section, where he coordinated and planned all CDOW activities related to the management of threatened, endangered and special concern species, Acting Terrestrial Nongame Wildlife Manager, Wildlife Biologist, Habitat Biologist, and Wildlife Technician at the Wellington State Wildlife Area. Before joining Colorado Division of Wildlife, Gary held temporary positions with the U.S. Forest Service, and managed a private waterfowl and pheasant hunting area near Greeley, Colorado, where he killed weeds and farmed for wildlife. Gary holds a B.S. in Wildlife Management from the University of New Hampshire, and an M.S. in Wildlife Biology from Colorado State University.

- **Rob Edward, Sinapu**

Rob joined Sinapu's staff in 1994, after working as a conservation policy specialist and legislative liaison for the New England Aquarium in Boston, MA. He is a cofounder and steering committee member of the Southern Rockies Wolf Restoration Project, a coalition of conservation organizations dedicated to restoring wolves to the full ecological role in the Southern Rockies. He is also a member of the Colorado Division of Wildlife's Wolf Working Group, a diverse group of interests charged with developing policy for wolves in Colorado.

A native of Idaho, Rob has spent over a decade working on conservation issues, including marine mammal protection, ancient forest preservation, and large carnivore restoration. He has also worked on environmental justice issues for Native Americans. Rob has a B.A. in Political Science from the University of Massachusetts at Boston, and is a four-year veteran of the U.S. Air Force.

- **Bonnie Kline, Colorado Wool Growers Association, Colorado Sheep & Wool Authority**

Bonnie Kline is the Executive Director for the Colorado Wool Growers Association. She has been actively involved in both the sheep and cattle business all of her life. Kline is actively involved in federal lands grazing and wildlife management issues on behalf of

the Colorado sheep industry. In addition to working on lynx management issues, Kline is serving on the Colorado Division of Wildlife's Wolf Working Group, and Ranching For Wildlife Task Force; the Colorado Public Lands Council; and the National Public Lands Council Wolf Task Force and the Wild Horse and Burro Task Force. She has also spent time in Mongolia working with livestock producers and government officials to set up pasture and water associations.

Reading:

Canada Lynx, General Information, Colorado Division of Wildlife.

Map of Lynx Range in Colorado, Colorado Gap Analysis Project, Colorado Diversity Information Center, 2005.

Map of All Lynx Locations Within the White River National Forest Boundary, Colorado Division of Wildlife, April 2005.

Lynx Protection Plan Revised, The Denver Post, April 2, 2005

Lynx More than Mirage in White River Forest, The Daily Sentinel, May 9, 2005.

- [Home](#)
- [Hunting](#)
- [Fishing](#)
- [Wildlife Species](#)
- [Exploring Habitat](#)
- [Conservation Planning](#)



Natural Diversity Information Source

Colorado Division of Wildlife

Select a Major T

Wildlife Species

- [Wildlife Home](#)
- [Amphibians](#)
- [Birds](#)
- [Fish](#)
- [Mammals](#)
- [Reptiles](#)

Wildlife Lynx Page

[Return to species list...](#)

Lynx *Lynx Canadensis*

Habitat: Northern coniferous forests are the preferred habitat of the lynx. Uneven-aged stands with relatively open canopies and well-developed understories are ideal (Quinn and Parker 1987).



Photographed by Tom Tietz ©

Diet: The principal food of North American lynx is the snowshoe hare, which composes 80 percent of the diet (Brand et al. 1976, More 1976, Nellis et al. 1972, Saunders 1963b). Other prey includes squirrels, beavers, muskrats, and even deer, caribou, and moose.

Photo by: Tom Tietz

Description: The lynx is a medium-sized cat with long legs, large feet, and a short tail. The fur is long, dense, soft, and fine. The dorsal color is grizzled gray to reddish brown, often tinged with black. The legs, feet, and underparts are paler, buff to white. Although spotting may be present, it usually is more muted than in the bobcat. The ears have long, dark tufts and the face has a pronounced ruff of fur. The tail is short with a completely black tip. The hindlegs are slightly longer than the front legs. The paws are much larger than those of the bobcat and can support twice as much weight on snow. Measurements are: total length 670-1,067 mm; length of tail 95-125 mm; length of hindfoot 203-250 mm; weight 5-15 kg.

Range in Colorado: They now appear to be restricted to extremely isolated areas of the mountains of the central portion of the state.

Status: CDOW WRIS Species, Federally Threatened, State Endangered

[County Occurrence Map](#)

Species O

Occurrence

Data Form

- HTML
- Delimit
- MS-Exc

[Fetch!](#)

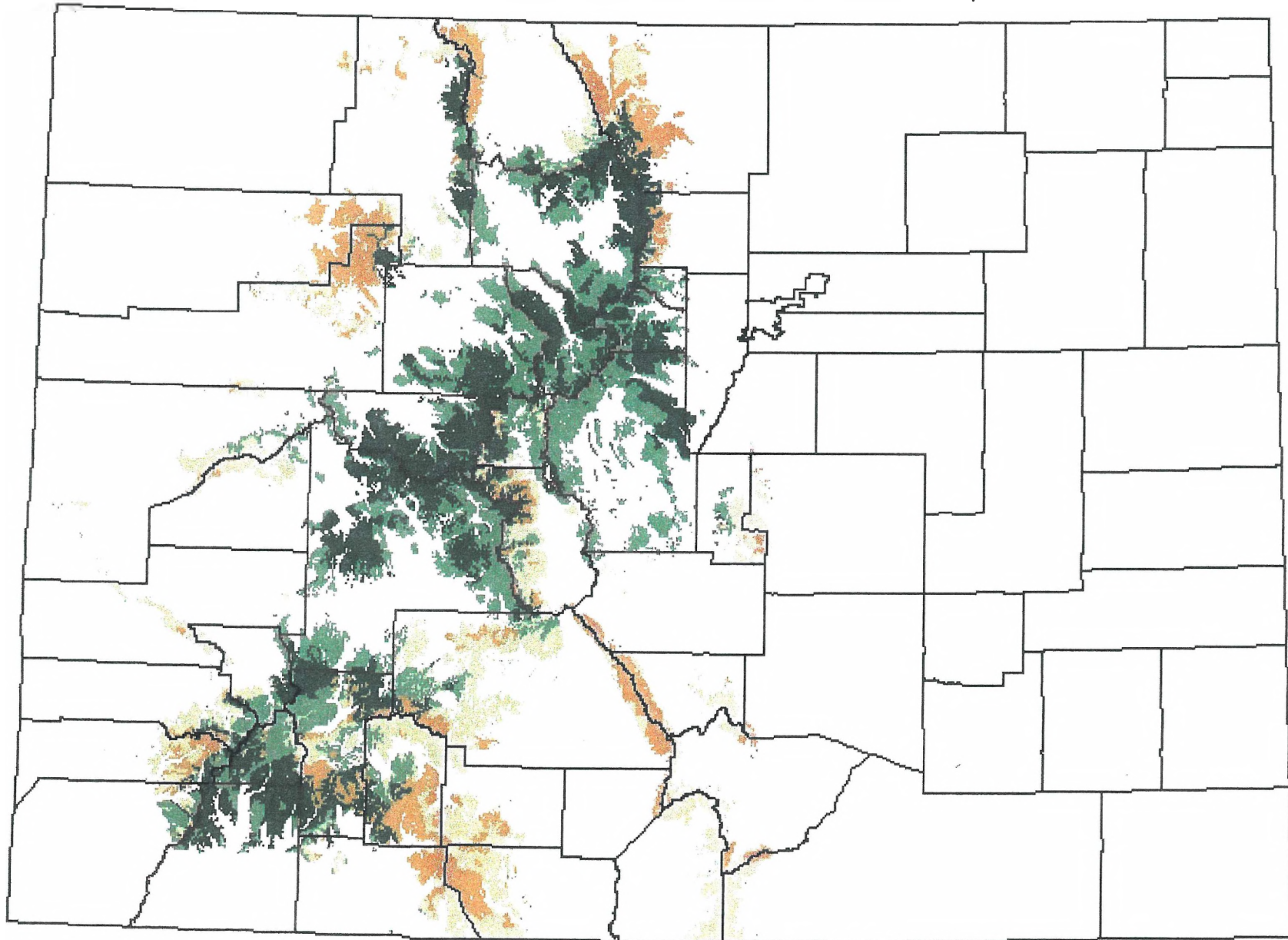
(*) NDIS has r data for fish at

[Lynx NDIS M Overall Range](#)

[Lynx Specific GAP Habitat I](#)


- [General Wildl](#)
- [Colorado Aud](#)
- [Colorado Bird](#)
- [Colorado Fiel](#)
- [Rocky Mnt. B](#)
- [TNC Migrator](#)

Colorado Gap Analysis Project
Lynx (*Lynx canadensis canadensis*)



Modeled Habitat


Known or Likely
Occurrence (56.58%)

Status 1-2 

Status 3-4 

No Known
Occurrence (43.42%)

Status 1-2 

Status 3-4 

Counties 
Known or Likely



CoGap Code: sp050097
Element Code:

20 0 20 40 60 80 Kilometers



5/10/99



All Lynx Locations within the White River National Forest Boundary: February 4, 1999 - February 1, 2005

