

## Health Promotion Journal of Australia

### Active adults recall their physical activity differently to less active adults: test-retest reliability and validity of a physical activity survey

Journal:	<i>Health Promotion Journal of Australia</i>
Manuscript ID:	HPJA-2012-OA-0248.R1
Manuscript Type:	Original Article
Keywords:	physical activity, measurement development, behavioural epidemiology

SCHOLARONE™  
Manuscripts

ew Only

1  
2  
3 **Active adults recall their physical activity differently to less active adults: test-retest**  
4  
5 **reliability and validity of a physical activity survey**  
6  
7  
8  
9  
10

11 **Abstract**

12 **Issue Addressed:** This paper determined the test-retest reliability and criterion validity of a modified  
13  
14 version of the Active Australia Survey (AAS) and whether these properties varied across participants'  
15  
16 activity levels.  
17  
18

19  
20 **Methods:** Participants (n=63) responded to repeat administrations of the AAS and wore an accelerometer  
21  
22 for seven days. Analyses used Spearman's Rho ( $r_s$ ) or weighted kappa ( $\kappa$ ) and Bland-Altman methods.  
23  
24 Variation in mean difference and 95% limits of agreement (LOA) across average levels of activity were  
25  
26 tested by linear regression.  
27  
28

29  
30 **Results:** Reliability correlations ( $r_s$  [95% CI]) for minutes/week ranged from 0.40 (0.16, 0.59) to 0.80  
31  
32 (0.68, 0.87). For days/week, the agreement ( $\kappa$  [95% CI]) between administrations ranged from 0.43 (0.34,  
33  
34 0.73) to 0.83 (0.61, 0.93). There was a small mean difference between administrations (-8.46 moderate-  
35  
36 vigorous minutes/week); 95% LOA widened as participants' average activity levels increased. Validity  
37  
38 correlations ( $r_s$  [95% CI]) for minutes/week ranged from 0.50 (0.28, 0.66) to 0.61 (0.43, 0.75). For  
39  
40 days/week, the agreement ( $\kappa$  [95% CI]) ranged from 0.35 (0.10, 0.50) to 0.61 (0.29, 0.87). Mean  
41  
42 difference between the AAS and accelerometer and 95% LOA both varied with participants' activity  
43  
44 levels.  
45  
46

47  
48 **Conclusions:** The reliability and validity of the modified AAS were better than previously published  
49  
50 versions, but varied according to participants' activity levels.  
51  
52

53  
54 **So what?** In this study, participants who engaged in more activity had more measurement error than less  
55  
56 active participants. This proportionality will have important implications for cross-sectional and  
57  
58

1  
2  
3 intervention studies. This phenomenon needs to be examined for other self-reported physical activity  
4  
5 measures.  
6  
7

8 **Keywords:** measurement, exercise, accelerometer, questionnaires, surveillance  
9  
10  
11  
12  
13  
14  
15  
16  
17  
18  
19  
20  
21  
22  
23  
24  
25  
26  
27  
28  
29  
30  
31  
32  
33  
34  
35  
36  
37  
38  
39  
40  
41  
42  
43  
44  
45  
46  
47  
48  
49  
50  
51  
52  
53  
54  
55  
56  
57  
58  
59  
60

For Review Only

## Introduction

The benefits of regular physical activity are well-known.<sup>1</sup> Most developed countries regularly monitor population physical activity levels and fund initiatives to increase participation.<sup>2-4</sup> The quality of this monitoring relies on accurate methods of measuring physical activity in large populations. Although the disadvantages of self-report measurement are well known,<sup>5</sup> and the use of accelerometry for population surveillance is becoming increasingly feasible,<sup>6-8</sup> self-report measurement still represents an efficient way to collect data on physical activity in population health research.

The Active Australia Survey (AAS)<sup>9</sup> was designed as a telephone-administered instrument for population surveillance of physical activity in Australian adults,<sup>10-12</sup> but has also been used to evaluate interventions.<sup>13-15</sup> The AAS assesses frequency (sessions) and duration (minutes) of past week physical activity. The test-retest reliability of the AAS has been established in Australian<sup>12, 16, 17</sup> and United States (US) adults,<sup>18</sup> and has been validated against accelerometers among: Australian men and women,<sup>16, 19</sup> Australian women;<sup>12</sup> and, US women.<sup>18</sup> The concurrent validity of the AAS has been assessed against the Australian National Health Survey (NHS), International Physical Activity Questionnaire (IPAQ) and the US Behavioral Risk Factors Surveillance System (BRFSS).<sup>20</sup> These evaluations revealed that the AAS has modest reliability and validity, similar to other physical activity surveillance tools (e.g. IPAQ).

Aside from modest reliability and validity results, **other limitations of the body of evidence regarding the validity and reliability of the AAS** include the untested assumption of whether or not measurement properties are constant across activity levels, and the mismatch in the definition of frequency between the tool and physical activity guidelines (which refer to days/week, not sessions). The only existing study to assess variation across average values found that the concurrent validity of the AAS (against NHS, IPAQ and BRFSS) worsened with increasing levels of activity.<sup>20</sup> There is need for consistency in definitions of physical activity frequency between guidelines and assessment tools. **Mismatch between the definitions of physical activity frequency in guidelines and tools, over-reporting and limitations of accelerometry may all contribute to the recent findings that population rates of**

1  
2  
3 guideline compliance are dramatically higher in the US<sup>7</sup> and England<sup>8</sup> when assessed by self-report than  
4  
5 by accelerometry.  
6  
7

8 Accordingly, we modified the AAS to assess the “number of days” activity was undertaken instead  
9 of “sessions of activity”. This study aimed to determine the test-retest reliability and criterion validity of  
10 the adapted version the AAS. In view of previous findings,<sup>20</sup> we also examined whether reliability and/or  
11 validity varied according to participants’ levels of physical activity. Test-retest reliability was established  
12 through repeat administrations of the AAS. Criterion validity was established by comparing AAS data to  
13 data from an accelerometer. While the accelerometer does not provide a gold-standard measure, it  
14 provides a useful criterion as it has good reliability and validity<sup>21</sup> and, importantly, it is not subject to the  
15 same sources of error as self-report.  
16  
17  
18  
19  
20  
21  
22  
23  
24

## 25 26 27 28 **Methods**

29 The study was advertised within an Australian university via email to staff and students. The email  
30 outlined the eligibility criteria (30-70 years, able to read English, no experience in administering the AAS).  
31 Interested participants, were emailed an information sheet, and then telephoned to confirm eligibility and  
32 gain verbal informed consent. This study was approved by The University of Queensland Human Research  
33 Ethics committee, Brisbane (#2009001169).  
34  
35  
36  
37  
38  
39  
40  
41  
42

43 Participants were each posted an Actigraph GT1M accelerometer, a daily log (to record  
44 accelerometer removals, water, cycling and strength activities) and a reply-paid envelope (Day 1). Two  
45 days later, participants were telephoned to prompt them to wear their accelerometer and to complete a  
46 demographic survey (Day 3). The AAS was administered via telephone and participants were prompted to  
47 mail back their accelerometer and daily log after seven days of accelerometer data collection (Day 10).  
48 The second administration of the AAS occurred 3-5 days after the first (Day 13-15), with both AAS  
49 administrations assessing the previous seven days of activity.  
50  
51  
52  
53  
54  
55  
56  
57  
58  
59  
60

1  
2  
3 Trained staff administered the AAS using a standard script (Supplementary File 1). The adapted  
4 version of the AAS required participants to recall the number of days/week and minutes/week that they  
5 engaged in: walking (in at least 10-minute bouts); vigorous gardening; vigorous activity; and, other  
6 moderate activity over the past week. The days reported in each category in the adapted AAS are not  
7 mutually exclusive and therefore the sum of days/week across categories may equal more than seven. As  
8 per the AAS protocol,<sup>9</sup> the minutes/week data were truncated at 840 minutes (necessary for an item in  
9 three participants at Time 1 and two participants at Time 2). Total moderate-vigorous activity was  
10 calculated for minutes/week and days/week data based on the sum of walking, moderate and vigorous  
11 activities (vigorous activity was not weighted in order to compare it to accelerometer-recorded  
12 minutes/week).

13  
14  
15  
16  
17  
18  
19  
20  
21  
22  
23  
24  
25  
26 The accelerometers were set to collect data in one minute epochs. Participants were asked to wear  
27 the accelerometer around their waist for seven consecutive days, and to only remove it when sleeping or  
28 in contact with water. Participants also recorded the timing and duration of activities that the  
29 accelerometer may not correctly detect (i.e., water-based activities, cycling and strength training).  
30 Accelerometer data were downloaded using the Actigraph software and processed using an adapted SAS  
31 program from the National Cancer Institute.<sup>22</sup> Data included all monitored time except bouts of an hour or  
32 longer of zero counts, with allowance for up to two counts that were <50 counts/minute. As per common  
33 practice, days were considered valid if there were at least 10 hours of wear. Participants were included in  
34 the analysis if they had at least five valid wear days. As five days of monitoring is sufficient to reflect  
35 habitual activity,<sup>21</sup> weekly values were taken as 7 times the average value for valid days for participants  
36 with less than seven days of valid accelerometer data (n=13). Additionally, to be included in the analysis  
37 participants needed to have recorded no water, cycling or strength activities in their wear log. This was  
38 done to exclude participants who could have reported activity in the AAS that was not detectable by the  
39 accelerometer. The data were analysed using established cut-points for moderate ( $\geq 1952$  cpm) and  
40 vigorous ( $\geq 5725$  cpm) activity.<sup>23</sup> Minutes/week were based on the number of one minute epochs  
41  
42  
43  
44  
45  
46  
47  
48  
49  
50  
51  
52  
53  
54  
55  
56  
57  
58  
59  
60

1  
2  
3 accumulated in ten minute bouts within a given intensity range (allowing for a maximum of two epochs  
4 outside of the cut-point range). Days/week data identified the number of days that had at least one ten  
5 minute bout of activity within the specified intensity range (allowing for a maximum of two epochs  
6 outside of the cut-point range).  
7  
8  
9  
10

11  
12 Analyses were conducted in SPSS version 17.0 (SPSS, Inc. Chicago IL) and STATA version 11  
13 (StataCorp LP, College Station, TX, USA) with significance set at  $p < 0.05$ . AAS and accelerometer data  
14 were skewed, thus medians (25-75<sup>th</sup> percentiles) were used to describe the distributions of the data and  
15 tests assuming normal distributions (i.e., intra-class correlations) were not used. Test-retest reliability was  
16 assessed for all AAS categories separately (walking, moderate and vigorous), and for the moderate-  
17 vigorous activity total, for minutes/week and days/week data. Criterion validity was assessed for  
18 moderate (moderate + walking), vigorous, and total moderate-vigorous categories, for minutes/week and  
19 days/week data. For the continuous minutes/week data, Spearman's correlation coefficients ( $r_s$ ) with 95%  
20 confidence intervals (based on Fisher's transformation) were calculated to examine the relationship  
21 between the two AAS administrations (test-retest reliability) and between the AAS data (at Time 1) and  
22 accelerometer data (criterion validity). Difference was calculated for minutes/week data between AAS  
23 administrations (Time 2 – Time 1) and between AAS and accelerometer data (AAS Time 1-  
24 accelerometer), and both difference variables were normally distributed. Bland-Altman plots were created  
25 to assess agreement between AAS Time 1 and 2 and between AAS Time 1 and accelerometer data for  
26 minutes/week data.<sup>24</sup> Linear regression was used to assess whether the mean difference and/or variability  
27 in difference varied across average values for each plot.<sup>25</sup> If average values were associated with mean  
28 difference and/or variability in mean difference, data were log-transformed. If this did not resolve the  
29 problem, then the mean difference and 95% limits of agreement were reported based on the linear  
30 regression analyses.<sup>25</sup> For the categorical days/week data, kappa statistics ( $\kappa$ ) with exponential weighting  
31 for disagreement (95% confidence intervals), were calculated to assess absolute agreement between  
32 repeat AAS administrations and between AAS Time 1 and accelerometer data.  
33  
34  
35  
36  
37  
38  
39  
40  
41  
42  
43  
44  
45  
46  
47  
48  
49  
50  
51  
52  
53  
54  
55  
56  
57  
58  
59  
60

1  
2  
3 Participants were classified as meeting the physical activity guidelines based on AAS data if they  
4 reported five or more days/week and a total of at least 150 minutes/week of moderate-vigorous activity.  
5  
6 Guideline compliance based on accelerometer data was classified as at least 150 minutes of moderate-  
7  
8 vigorous activity (accumulated in at least 10-minute bouts) and five or more days of monitoring with at  
9  
10 least one ten minute bout of moderate-vigorous activity. Weighted kappa statistics (95% confidence  
11  
12 intervals) were calculated to assess agreement between classification of guideline compliance between the  
13  
14 AAS and accelerometer data.  
15  
16  
17  
18  
19  
20  
21

## 22 Results

23  
24  
25 One hundred and sixteen participants provided verbal consent, and 103 completed the study  
26  
27 protocol. All 103 participants had five or more valid days of accelerometer data and 63 of those did not  
28  
29 record water, strength or cycling activities in their log. The participants included in the analysis (n=63)  
30  
31 had a mean ( $\pm$  standard deviation) age of 49.5 years ( $\pm$  12.5), a mean body mass index (BMI) of 26.1 ( $\pm$   
32  
33 5.6) kg/m<sup>2</sup>, and the majority (60.3%) had university level education (Table 1). There were no significant  
34  
35 differences between participants who were (n=63) and were not (n=40) included in the study sample for  
36  
37 **any demographic characteristic or physical activity** (data not shown).  
38  
39  
40

41 **Insert Table 1 here**

42  
43  
44  
45 The median amount of moderate-vigorous minutes/week reported in the AAS was the same at Time  
46  
47 1 and 2 (180 minutes/week; Table 2). The correlation between minutes/week data reported at Time 1 and  
48  
49 2 was lowest for moderate activity ( $r_s = 0.40$ ); and highest for total moderate-vigorous activity ( $r_s = 0.80$ ;  
50  
51 Table 2). The absolute agreement between days/week reported at Time 1 and 2 was weakest for moderate  
52  
53 activity ( $\kappa = 0.43$ ); and strongest for vigorous activity ( $\kappa = 0.83$ ; Table 2). The Bland-Altman plot for  
54  
55 agreement between AAS Time 1 and 2 for total moderate-vigorous minutes/week is shown in Figure 1  
56  
57  
58  
59  
60



1  
2  
3 (Panel A). The mean difference between AAS administrations was constant across average levels of  
4 activity (-8.46 minutes/week). The variability in mean **difference** between AAS administrations was  
5 significantly associated with the average amount of activity ( $\beta=0.22$ , SE 0.06,  $p<0.001$ , intercept=45.17).  
6  
7 Log-transformation did not resolve the heteroscedasticity; thus, the limits of agreement were estimated as  
8  
9 (-8.46 +/- (110.96 + 0.54 x average of AAS administrations)).  
10  
11  
12  
13

14 **Insert Table 2 here**

15 **Insert Figure 1 here**

16  
17  
18  
19 The median amount of moderate-vigorous accelerometer-recorded activity was 75 minutes/week  
20 (Table 2). The correlations ( $r_s$ ) between the AAS and accelerometer data ranged from 0.50 (moderate) to  
21 0.61 (moderate-vigorous total) for minutes/week (Table 2). The absolute agreement ( $\kappa$ ) between AAS and  
22 accelerometer days/week data ranged from 0.35 (moderate) to 0.61 (vigorous; Table 2). The Bland-  
23  
24 Altman plot of agreement between AAS and accelerometer moderate-vigorous minutes/week is shown in  
25  
26 Figure 1 (Panel B). Linear regression showed a significant positive association between the mean  
27 difference in AAS and accelerometer data and the average of these two measures ( $\beta=0.50$ , SE 0.11,  
28  
29  $p<0.001$ ; intercept=22.60). Thus, the mean difference was estimated based on the regression equation  
30 (22.60 + 0.50 x average of AAS and accelerometer data). The variance also increased significantly with  
31  
32 the average of the two measures ( $\beta=0.41$ , SE 0.06,  $p<0.001$ ; intercept=28.47). Log-transformation did not  
33  
34 resolve the problems, thus, the limits of agreement were estimated as the mean difference +/- (69.94 +  
35  
36 1.01 x average of AAS and accelerometer data).  
37  
38  
39  
40  
41  
42  
43  
44

45  
46 Based on data from the AAS at Time 1, 30 (48%) participants met the physical activity guidelines,  
47 whereas data from the accelerometers suggest that only 17 (27%) participants met the guidelines. Sixteen  
48 participants (25%) were classified as meeting the guidelines by both the AAS and accelerometer data, 32  
49 (51%) were consistently classified as not meeting the guidelines, 14 (22%) met the guidelines based on  
50  
51 AAS but not accelerometer data, and 1 (2%) participant met the guidelines according to accelerometer data  
52  
53  
54  
55  
56  
57  
58  
59  
60

1  
2  
3 but not AAS data. The agreement between guideline compliance categories based on the AAS and  
4  
5 accelerometer data was good ( $\kappa=0.51$ , 95% CI 0.32, 0.71).  
6  
7  
8  
9

## 10 11 **Discussion**

12  
13 The version of the AAS used in this study had better test-retest reliability and criterion validity than  
14 previous versions<sup>12, 16-19</sup> and compared to other brief self-report instruments (e.g. IPAQ, BRFSS).<sup>26, 27</sup> This  
15 study also showed that the AAS had poorer test-retest reliability and more error compared to an  
16 accelerometer as the amount of physical activity increased. This suggests that studies using the AAS may  
17 have more random measurement error and more bias relative to an accelerometer in more active  
18 participants than in less active participants.  
19  
20  
21  
22  
23  
24  
25  
26

27 The test-retest reliability for moderate-vigorous minutes/week in our adapted AAS was stronger  
28 than what has been shown previously for other versions, in which the intraclass correlations for test-retest  
29 reliability ranged from 0.32 (95% CI 0.09, 0.52) for moderate-vigorous minutes/day,<sup>18</sup> to 0.64 (95% CI  
30 0.57, 0.70) for moderate-vigorous minutes/week.<sup>17</sup> The absolute agreement for test-retest reliability of  
31 days/week data in this study was also stronger than previous studies that examined the relative agreement  
32 between repeat AAS administrations for sessions/week data ( $r_s=0.58$ ).<sup>12</sup> For both minutes/week and  
33 days/week, our version of the AAS showed stronger validity compared to an accelerometer than in  
34 previous studies, which have shown correlations ranging from 0.29 (95% CI 0.16, 0.41) for moderate-  
35 vigorous minutes/day,<sup>19</sup> to 0.52 (95% CI not reported) for moderate-vigorous minutes/week,<sup>12</sup> and 0.48  
36 (95% CI not reported) for sessions/week.<sup>12</sup>  
37  
38  
39  
40  
41  
42  
43  
44  
45  
46  
47  
48

49 A number of issues may contribute to the observed differences in reliability and validity results  
50 between studies, including the: version of the AAS (our version, the original version or other  
51 modifications, such as inclusion of specific domains for transport and leisure walking<sup>19</sup> and sitting  
52 questions<sup>18</sup>); study populations; statistics reported; and, mode of administration (interviewer-  
53  
54  
55  
56  
57  
58  
59  
60

1  
2  
3 administration<sup>19</sup> or self-completion<sup>12, 18</sup>). The reliability results might also be affected by the time period  
4  
5 between repeat administrations, which for previous studies was 14 days,<sup>12</sup> 7 days,<sup>18</sup> and 1 day.<sup>17</sup> The  
6  
7 validity results may also be affected by varying protocols for treating accelerometer data and the weight  
8  
9 status of the samples, as weight has previously been shown to impact on AAS validity estimates.<sup>16</sup>  
10

11  
12 Most previous studies have treated reliability and validity as constant across participants' activity  
13  
14 levels, but our examination revealed this assumption to be incorrect. Our results showed that the  
15  
16 performance of the AAS was proportional to the amount of physical activity that occurs, which is  
17  
18 consistent with previous findings that the concurrent validity of the AAS with other self-reported tools  
19  
20 worsens with increasing activity levels.<sup>20</sup> There are a number of plausible reasons why reliability and  
21  
22 validity might vary across physical activity levels. Reporting of behaviour may be better when there is  
23  
24 less activity to recall; further, variation in actual behaviour (not just recalling the behaviour) may be  
25  
26 greater among more active, compared with less active, participants. In terms of validity, the  
27  
28 accelerometer is not a gold-standard criterion, and its performance as a criterion might depend on  
29  
30 people's physical activity level. The approach of using a threshold (even one with adequate sensitivity  
31  
32 and specificity) means that each minute identified as moderate-vigorous physical activity is identified  
33  
34 with some error, and consequently, the total amount of error increases proportionally as the underlying  
35  
36 amount of activity increases. Further, higher levels of physical activity may be indicative of a wider range  
37  
38 of types of physical activities performed, and the accelerometer is known to capture some types of  
39  
40 activities better than others.<sup>21</sup> Finally, the different variability of accelerometer and self-report measures  
41  
42 may have led to artefactual bias.<sup>28</sup>  
43  
44  
45  
46

47  
48 There are a number of limitations in this study. Previous research has shown that completing a log  
49  
50 may improve subsequent recall of vigorous activity<sup>19</sup> and/or walking activity<sup>12</sup> in the AAS. Thus,  
51  
52 participants may have experienced a learning effect when completing the AAS at Time 2, which may  
53  
54 have potentially biased reliability estimates, but would not have affected the validity estimates. Our AAS  
55  
56 modifications did not include a question about days on which either moderate or vigorous activity  
57  
58  
59  
60

1  
2  
3 occurred, which means a total moderate-vigorous days/week cannot be calculated by summing moderate  
4 and vigorous days (similar to IPAQ). Future AAS versions should consider this to obtain congruence with  
5 Australian physical activity guidelines. **Finally, generalisability of the findings may be limited as this**  
6 **study, like most validity studies, used a small convenience sample recruited through a university setting.**  
7  
8  
9  
10  
11

12 A strength of this study was that our treatment of the accelerometer data ensured that it was as  
13 useful as possible as a criterion measure for AAS-reported moderate-vigorous activity. We excluded  
14 participants who reported doing activity that may not be detected by the accelerometer and processed the  
15 data to only recognise bouts of at least 10-minutes, in order to replicate how participants were instructed  
16 to recall their activity (in the case of the walking category), and likely how they are able to remember  
17 their activity (in the case of the other categories). The seven day recall period of the AAS completely  
18 overlapped with the accelerometer wear period. Previous validations of the AAS have used overlapping  
19 assessment periods, however only one previous study processed accelerometer data based on 10-minute  
20 bouts,<sup>12</sup> and none excluded participants who reported activities not detected by the accelerometer.  
21  
22  
23  
24  
25  
26  
27  
28  
29  
30  
31  
32  
33  
34

## 35 **Conclusion**

36  
37  
38 This study has found an adapted version of the AAS, had better test-retest reliability and criterion  
39 validity compared with previous versions of the AAS, but that these properties varied with participants'  
40 activity levels. Future reliability and validity studies should not assume performance to be constant across  
41 activity levels, but rather test whether this is the case.<sup>24, 28</sup> A greater amount of measurement error at  
42 higher levels of activity may affect epidemiological studies of physical activity and health outcomes  
43 because there may be more attenuation due to misclassification in more active, compared with less active  
44 populations. Intervention studies may also be affected by a widening in measurement error and bias as  
45 participants' activity levels increase. The impact of these issues is not clear and needs to be empirically  
46 examined, by including both objective and self-report measures in future epidemiological and  
47 intervention studies.  
48  
49  
50  
51  
52  
53  
54  
55  
56  
57  
58  
59  
60

## References

1. Haskell WL, Lee IM, Pate RR, Powell KE, Blair SN, Franklin BA, et al. Physical activity and public health: Updated recommendation for adults from the American College of Sports Medicine and the American Heart Association. *Medicine and Science in Sports and Exercise* 2007;39(8):1423-34.
2. Australian Institute of Health and Welfare. Australia's health 2010. Australia's health series no. 12. Cat. No. Aus 122. Canberra: AIHW 2010.
3. US DoHaHS. 2008 physical activity guidelines for Americans. Washington, DC: US Government Printing Office; 2008. p. 76.
4. World Health Organisation. *Global strategy on diet, physical activity and health: Report by the secretariat*. Geneva: WHO; 2004.
5. Sallis JF, Saelens BE. Assessment of physical activity by self-report: Status, limitations and future directions. *Research Quarterly for Exercise and Sport* 2000;71(2):1-14.
6. Hagstromer M, Troiano RP, Sjostrom M, Berrigan D. Levels and patterns of objectively assessed physical activity- a comparison between Sweden and the United States. *American Journal of Epidemiology* 2010;171(10):1055-64.
7. Troiano RP, Berrigan D, Dodd KW, Masse LC, Tilert T, McDowell M. Physical activity in the United States measured by accelerometer. *Medicine and Science in Sports and Exercise* 2008;40(1):181-8.
8. Craig R, Mindell J, Hirani V. Health survey for England 2008: Physical activity and fitness. London: The NHS Information Centre for health and social care; 2009. p. 395.

- 1  
2  
3 9. Australian Institute of Health and Welfare. *The Active Australia survey: A guide and manual for*  
4  
5 *implementation, analysis and reporting*. Canberra: AIHW; 2003.  
6  
7
- 8  
9 10. Bauman A, Ford I, Armstrong T. *Trends in population levels of reported physical activity in*  
10  
11 *Australia 1997, 1999 and 2000*. Canberra: Australian Sports Commission; 2001.  
12
- 13  
14 11. Queensland Health and Australian Institute of Health and Welfare. *Physical activity patterns of*  
15 *Queensland adults*. Brisbane: AGPS; 2003.  
16
- 17  
18  
19 12. Brown WJ, Burton NW, Marshall AL, Miller YD. Reliability and validity of a modified self-  
20  
21 administered version of the *Active Australia* physical activity survey in a sample of mid-age women.  
22  
23 *Australia and New Zealand Journal of Public Health* 2008;32(6):535-41.  
24
- 25  
26  
27 13. Reeves MM, Marshall AL, Owen N, Winkler EA, Eakin EG. Measuring physical activity change  
28  
29 in broad-reach intervention trials. *Journal of Physical Activity and Health* 2010;7(2):194-202.  
30
- 31  
32  
33 14. Eakin E, Reeves M, Lawler S, Graves N, Oldenburg B, Del Mar C, et al. Telephone counseling  
34  
35 for physical activity and diet in primary care patients. *American Journal of Preventive Medicine*  
36  
37 2009;36(2):142-9.  
38
- 39  
40  
41 15. Hawkes AL, Atherton J, Taylor CB, Scuffham P, Eadie K, Miller NH, et al. Randomised  
42  
43 controlled trial of a secondary prevention program for myocardial infarction patients ('Proactive Heart'):  
44  
45 Study protocol. *BMC Cardiovascular Disorders* 2009;9:16.  
46
- 47  
48  
49 16. Timperio A, Salmon J, Crawford D. Validity and reliability of a physical activity recall  
50  
51 instrument among overweight and non-overweight men and women. *Journal of Science and Medicine in*  
52  
53 *Sport* 2003;6(4):477-91.  
54  
55  
56  
57  
58  
59  
60

- 1  
2  
3  
4  
5  
6  
7  
8  
9  
10  
11  
12  
13  
14  
15  
16  
17  
18  
19  
20  
21  
22  
23  
24  
25  
26  
27  
28  
29  
30  
31  
32  
33  
34  
35  
36  
37  
38  
39  
40  
41  
42  
43  
44  
45  
46  
47  
48  
49  
50  
51  
52  
53  
54  
55  
56  
57  
58  
59  
60
17. Brown W, Trost S, Bauman A, Mummery K, Owen N. Test-retest reliability of four physical activity measures used in population surveys. *Journal of Science and Medicine in Sport* 2004;7(2):205-15.
  18. Pettee Gabriel K, McClain JJ, Lee CD, Swan PD, Alvar BA, Mitros MR, et al. Evaluation of physical activity measures used in middle-aged women. *Medicine and Science in Sports and Exercise* 2009;41(7):1403-12.
  19. Timperio A, Salmon J, Rosenberg M, Bull F. Do logbooks influence recall of physical activity in validation studies? *Medicine and Science in Sports and Exercise* 2004;36(7):1181-6.
  20. Brown W, Bauman A, Chey T, Trost S, Mummery K. Comparison of surveys used to measure physical activity. *Australia and New Zealand Journal of Public Health* 2004;28(2):128-34.
  21. Trost SG, Mciver KL, Pate RR. Conducting accelerometer-based activity assessments in field-based research. *Medicine and Science in Sports and Exercise* 2005;37(11):s531-43.
  22. US DoHaHS. Nhanes 2003-2004 data documentation exam component: Physical activity monitor (paxraw\_c). Hyattsville, MD: Centres for Disease Control and Prevention; 2006 [cited 2009 October]; Available from: [http://www.cdc.gov/nchs/data/nhanes/nhanes\\_03\\_04/paxraw\\_c.pdf](http://www.cdc.gov/nchs/data/nhanes/nhanes_03_04/paxraw_c.pdf).
  23. Freedson P, Melanson E, Sirard J. Calibration of the computer science and applications, inc. accelerometer. *Medicine and Science in Sports and Exercise* 1998;30(5):777-81.
  24. Bland JM, Altman DG. Measuring agreement in method comparison studies. *Statistical Methods in Medical Research* 1999;8(2):135-60.
  25. Brown R, Richmond S. An update on the analysis of agreement for orthodontic indices. *European Journal of Orthodontics* 2005;27(3):286-91.

1  
2  
3 26. Yore MM, Ham SA, Ainsworth B, Kruger J, Reis J, Kohl HW, et al. Reliability and validity of  
4 the instrument used in BRFSS to assess physical activity. *Medicine and Science in Sport and Exercise*  
5  
6 2007;39(8):1267-74.  
7  
8

9  
10  
11 27. Craig CL, Marshall AL, Sjostrom M, Bauman A, Booth M, Ainsworth BE, et al. International  
12 physical activity questionnaire: 12-country reliability and validity. *Medicine and Science in Sports and*  
13  
14 *Exercise* 2003;35(8):1381-95.  
15  
16

17  
18 28. Bland JM, Altman DG. Applying the right statistics: Analyses of measurement studies.  
19  
20 *Ultrasound in Obstetrics & Gynecology* 2003;22(1):85-93.  
21  
22  
23  
24  
25  
26  
27  
28  
29  
30  
31  
32  
33  
34  
35  
36  
37  
38  
39  
40  
41  
42  
43  
44  
45  
46  
47  
48  
49  
50  
51  
52  
53  
54  
55  
56  
57  
58  
59  
60



1  
2  
3 **Tables**  
4

5 **Table 1:** Demographic characteristics of convenience sample used to evaluate test-retest reliability and criterion  
6 validity of the adapted Active Australia Survey (AAS) (n=63)  
7  
8

9  
10

	<b>mean ± SD</b>
Age, yrs	49.5 ± 12.5
Height, cm	169.6 ± 9.3
Weight, kg	75.9 ± 19.0
Body mass index, kg/m <sup>2</sup>	26.1 ± 5.6
	<b>n (%)</b>
Gender, male	23 (36.5)
Ethnicity, Caucasian	63 (100.0)
Marital status, married or living together	50 (79.4)
Highest level of education, university or college	38 (60.3)
Employment, full-time paid work	45 (71.4)
Weekly household income, AUD <\$1000/wk	11 (17.5)

11  
12  
13  
14  
15  
16  
17  
18  
19  
20  
21  
22  
23  
24  
25  
26  
27  
28  
29  
30  
31  
32  
33  
34  
35  
36  
37  
38  
39  
40  
41  
42  
43  
44  
45  
46  
47  
48  
49  
50  
51  
52  
53  
54  
55  
56  
57  
58  
59  
60

**Table 2:** Test-retest reliability and criterion validity against accelerometer data of the adapted Active Australia Survey (AAS) in a convenience sample of Australian adults (n=63)

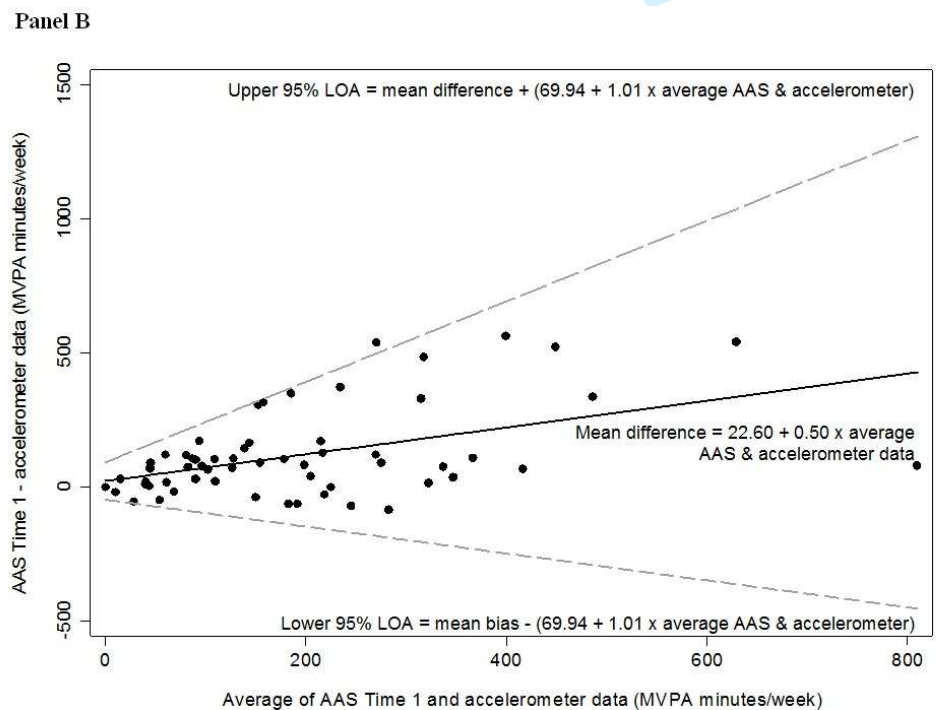
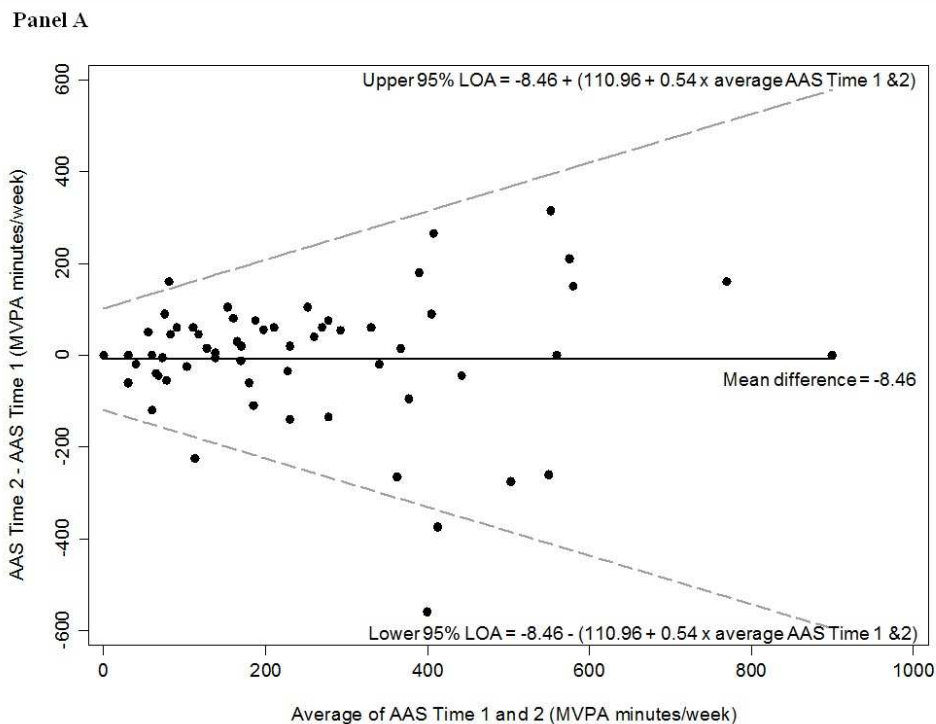
	Test-retest Reliability Outcomes			Criterion Validity Outcomes		
	Time 1 AAS median (25-75 <sup>th</sup> %ile)	Time 2 AAS median (25-75 <sup>th</sup> %ile)	$r_s$ (95%CI)	AAS Time 1 median (25-75 <sup>th</sup> %ile)	Accelerometer median (25-75 <sup>th</sup> %ile)	$r_s$ (95%CI)
<b>Minutes per week</b>						
walking	135 (45-225)	120 (60-240)	0.76 (0.63, 0.85)	-	-	-
moderate	0 (0-0)	0 (0-0)	0.40 (0.16, 0.59)	140 (50-280) <sup>†</sup>	56 (10-118) <sup>†</sup>	0.50 (0.28, 0.66)
vigorous	0 (0-40)	0 (0-60)	0.64 (0.47, 0.77)	0 (0-40)	0 (0-0)	0.60 (0.41, 0.74)
moderate-vigorous total	180 (90-330)	180 (95-350)	0.80 (0.68, 0.87)	180 (90-330)	75 (21-209)	0.61 (0.43, 0.75)
	Time 1 AAS median (25-75 <sup>th</sup> %ile)	Time 2 AAS median (25-75 <sup>th</sup> %ile)	$\kappa$ (95%CI)	AAS Time 1 median (25-75 <sup>th</sup> %ile)	Accelerometer median (25-75 <sup>th</sup> %ile)	$\kappa$ (95%CI)
<b>Days per week</b>						
walking	4 (2-6)	4 (2-6)	0.64 (0.45, 0.81)	-	-	-
moderate	0 (0-0)	0 (0-0)	0.43 (0.34, 0.73)	4 (3-7) <sup>†</sup>	2 (1-4) <sup>†</sup>	0.35 (0.10, 0.50)

vigorous	0 (0-1)	0 (0-1)	0.83 (0.61, 0.93)	0 (0-1)	0 (0-0)	0.61 (0.29, 0.87)
moderate-vigorous total	5 (3-7)	6 (3-7)	0.63 (0.36, 0.76)	5 (3-7)	3 (1-5)	0.45 (0.34, 0.66)

† moderate total for criterion validity includes both walking and moderate items from AAS at Time 1

For Review Only

**Figure 1:** Bland-Altman plots of agreement between moderate-vigorous minutes/week (MVPA) reported in the adapted Active Australia Survey (AAS) at Time 1 and 2 (Panel A) and between Time 1 and accelerometer data (Panel B) (n=63)



## Supplementary File 1: Adapted Active Australia Survey Interview Script

I would like to ask you some brief questions about the activity you did **IN THE LAST WEEK**.

**1.a** In the last week, how many days have you **walked continuously**, for at least 10 minutes, for recreation, exercise or to get to or from places? (Only count the days you walked for at least 10 minutes without stopping.)

\_\_\_\_\_ DAYS *[If answer is 0, then skip to 2.a]*

**1.b** What do you estimate was the **total time** that you spent walking in this way in the last week?

\_\_\_\_\_ MINUTES

**2.a** In the last week, how many days did you do any **vigorous gardening or heavy work** around the yard which made you breathe harder or puff and pant? (e.g. things like heavy digging, pushing a lawn mower)

\_\_\_\_\_ DAYS *[If answer is 0, then skip to 3.a]*

**2.b** What do you estimate was the **total time** that you spent doing vigorous gardening or heavy work around the yard in the last week?

\_\_\_\_\_ MINUTES

The next questions EXCLUDE household chores, gardening or yard work:

**3.a** In the last week, **how many days** did you do any **vigorous physical activity** which made you breathe harder or puff and pant? (e.g. jogging, cycling, aerobics, competitive tennis).

\_\_\_\_\_ DAYS *[If answer is 0, then skip to 4.a]*

*[Interviewer clarification: The types of activities which might be reported here, in addition to the above examples, include team games such as football, hockey, basketball, netball, squash, cross-country skiing, cross-country hiking (i.e. rough or steep terrain), weight lifting, boxing, rock climbing, gymnastics, using a rowing machine, certain martial arts, high-impact and step aerobics. It is important to remember that the activity must make the participant breathe much harder and have a large effect on heart rate AND make them unable to talk while doing the activity.]*

**3.b** What do you estimate was the **total time** that you spent doing this vigorous physical activity in the last week?

\_\_\_\_\_ MINUTES

1  
2  
3 **4.a** In the last week, how many days did you do any other more **moderate physical activities** that  
4 you have not already mentioned? (e.g. swimming, social tennis, golf, etc) (Not walking; covered  
5 earlier)

6  
7 \_\_\_\_\_ DAYS *[If answer is 0, then skip to 5.a]*  
8

9  
10 *[Interviewer clarification: The types of activities which might be expected, in addition to the above*  
11 *examples, include dancing, badminton, table tennis, horseback riding, canoeing, kayaking, volleyball,*  
12 *cricket, baseball or softball, downhill skiing, cross-training, surfing and windsurfing. The activity must*  
13 *make the participant breathe harder and increase the heart rate but still allow them to talk, but not sing,*  
14 *while doing the activity]*  
15

16  
17 **4.b** What do you estimate was the **total time** that you spent doing these activities in the last week?  
18

19 \_\_\_\_\_ MINUTES  
20  
21  
22  
23  
24  
25  
26  
27  
28  
29  
30  
31  
32  
33  
34  
35  
36  
37  
38  
39  
40  
41  
42  
43  
44  
45  
46  
47  
48  
49  
50  
51  
52  
53  
54  
55  
56  
57  
58  
59  
60