

2017

HSLIC Annual Report FY2016-17

University of New Mexico Health Sciences Library and Informatics Center

Follow this and additional works at: <https://digitalrepository.unm.edu/hslic-annual-reports>

Recommended Citation

University of New Mexico Health Sciences Library and Informatics Center. "HSLIC Annual Report FY2016-17." (2017).
<https://digitalrepository.unm.edu/hslic-annual-reports/20>

This Book is brought to you for free and open access by the Administration at UNM Digital Repository. It has been accepted for inclusion in HSLIC Annual Reports by an authorized administrator of UNM Digital Repository. For more information, please contact disc@unm.edu.



Annual Report 2016-17



TABLE OF CONTENTS

HSLIC VISION AND MISSION STATEMENTS	iv
EXECUTIVE SUMMARY	1
ORGANIZATIONAL CHARTS	3
UNIT ACCOMPLISHMENTS	7
ADMINISTRATIVE SERVICES	8
Deputy Director’s Office	8
Planning and Business Support	9
BIOMEDICAL INFORMATICS RESEARCH, TRAINING AND SCHOLARSHIP	10
EDUCATION CONSULTATION AND REFERENCE SERVICES	11
RESOURCES, ACCESS & DELIVERY, AND SPECIAL COLLECTIONS	12
SPONSORED RESEARCH	14
American Association of Colleges of Pharmacy (AACP) Section of Library and Information Science (LIS) Professional Development	15
Continuing Health Information Outreach in New Mexico, Rural Health Outreach Award	15
Enhancing CBPR Practice through Provision of Expert Information Skills	15
Minimizing Stress, Maximizing Success of Physician's Use of Health Information and Communications Technologies	15
Native Voices Outreach: New Mexico’s Tribal Libraries and the Four Corners	15
Native Voices Outreach: New Mexico’s Tribal Colleges and Universities	16
Professional Development for Librarians Serving Tribal Communities in New Mexico, Arizona, Colorado and Oklahoma	16
Psychometric Testing of the Medical Information Literacy Questionnaire (MILQ): A Validation Study	16
APPENDIXES	18
Endowments	17
Serial Titles Canceled 2016–17	18
New Serial Subscriptions 2016–17	18
Publications	19
Presentations, Exhibits and Demonstrations	20
In-Services July 2016 through June 2017	25
Library Hours 2016–17	25
2016-Staff Appreciation and Awards	25
Health Sciences Library and Informatics Center Staff Roster 2016–17	26
STATISTICS	27
ADMINISTRATIVE SERVICES	28
Table 1: HSLIC Personnel	28
Figure 1: HSLIC Revenue and Expenses	28

BIOMEDICAL INFORMATICS	29
Table 2: Biomedical Informatics (BMI) Fellowship and Master of Science in Clinical Research (MSCR) Education	29
DOMENICI CENTER FOR HEALTH SCIENCES EDUCATION	29
Figure 2: Use of the Domenici Center	29
Figure 3: Use of the Interprofessional Healthcare Simulation Center	29
LIBRARY AND EDUCATION SERVICES	30
Table 3: Instructional Programs/Orientations	30
Table 4: Distance Services Training	30
Table 5: Individual Consultations	30
Table 6: Size of General Collection (Titles)	30
Table 7: Size of General Collection (Volumes)	31
Table 8: Special Collections Summary Table	31
Table 9: Local Collections	31
Table 10: Collection Development (General Expenditures – Dollars)	32
Table 11: Resource Use – Interlibrary Loan/Document Delivery Summary	32
Table 12: Use of Library Physical Materials	32
Table 13: Use of Course Reserves	33
Table 14: Use of Library Building	33
Figure 4: Patrons in the Library Building (Average)	33
Figure 5: Patrons in the Library Building (Maximums)	33
Table 15: Use of Electronic Collection	34
Table 16: Number of Mediated Searches and Reference Questions	34
FREQUENTLY REQUESTED STATISTICS	35

CREDITS

Editor & Statistics	Sally Bowler-Hill
Production Assistants	Patti Brammer, Mary Cianflone

HSLIC VISION STATEMENT

We aspire to be New Mexico's agent for health knowledge.

HSLIC MISSION STATEMENT

We connect the UNM HSC community to quality information and services by delivering health resources and instruction, advancing the science of informatics and promoting health information access for New Mexicans.

EXECUTIVE SUMMARY

Holly Shipp Buchanan, MLn, MBA, EdD, Executive Director
Sally Bowler-Hill, MA, PMP, Manager, Administrative Operations
Philip Kroth, MD, MS, Director, Biomedical Informatics Research, Training and Scholarship
Steve Stockdale, MA, Deputy Director for Operations

Reconfiguring resources to better serve our customers was the theme of the Health Sciences Library and Informatics Center's (HSLIC's) work throughout fiscal year 2016–17 (FY2017).

HSLIC's partnership with the UNM Health Sciences Center (HSC) Chancellor's Office and the UNM Planning, Design and Construction department on the construction of the third phase of the Domenici Center of Health Sciences Education was a major activity this year. Representing the HSC's educational programs, HSLIC coordinated user input in planning and construction meetings for this 66,000 square foot classroom building. Scheduled for completion during the fall of 2017, this new building includes class laboratories for the pharmacy, physical therapy and occupational therapy programs. It also contains two 153-seat active learning classrooms, twenty small group rooms for problem based learning, a computerized testing center and ten classrooms in a variety of different sizes. It will also include ample student gathering space, a priority HSC students identified in past surveys.

Concurrent with the new construction, HSLIC also played a role in the planning and coordination of renovations to the original West Wing of Domenici Center, including demolishing a classroom and study rooms on the second floor to create new gym space called the HSC Wellness Center, which opened in May. Additionally, HSLIC formed a committee consisting of faculty and staff from Medicine, Nursing and Pharmacy to begin an RFP process to purchase a simulation center management system for the Interprofessional Healthcare Simulation Center (IHSC). This system will automate simulation scheduling, communication and recording and provide a more user-friendly interface for faculty and students to view recorded simulated patient encounters.



This artist rendering of the addition to the Domenici Center is from the architect, Dekker Perich Sabatini.

Additionally, the New Mexico Health Historical Collection room in HSLIC was updated this fiscal year with new paint, flooring and technology as well as a new exhibit entitled "Price of War: Medical Advances during Wartime." The room was also made a reservable space in HSLIC's student study room reservation system.

During FY2017, HSLIC's Resources, Archives and Discovery unit conducted a full shelf inventory of the print collection, the first time this had been completed in a decade. This unit also migrated UNM HSC digital assets and records to UNM's new institutional repository platform. The new platform offers greater functionality and a more modern layout, which will better meet faculty and student needs. It also will make UNM local collections more discoverable on the internet.

Another significant activity for HSLIC in FY2017 was to make further organizational shifts to better align its services, post-reorganization with the HSC Chief Information Office. HSLIC reorganized its Reference and User Support Services unit into two new units. The faculty reorganized into a new Education, Consultation and Reference Services (ECRS) unit, reporting to a new Division Head. This change allows the new ECRS unit to focus on providing advanced education and reference services to UNM HSC students and faculty and the community. As part of this process, the Division Head also undertook an assessment of reference and instructional services to position HSLIC toward offering more advanced services for investigators.

Staff at the Service Point now report to the Deputy Director for Operations. In March, the remaining Tier 1 IT support staff were transferred to the HSC Chief Information Office, allowing the Service Point staff to concentrate on frontline library services and Domenici Center support. As part of this transition, the unit began an effort to stabilize staffing, document critical processes, and develop key usage metrics. They also implemented a new, streamlined system for student study room reservations.

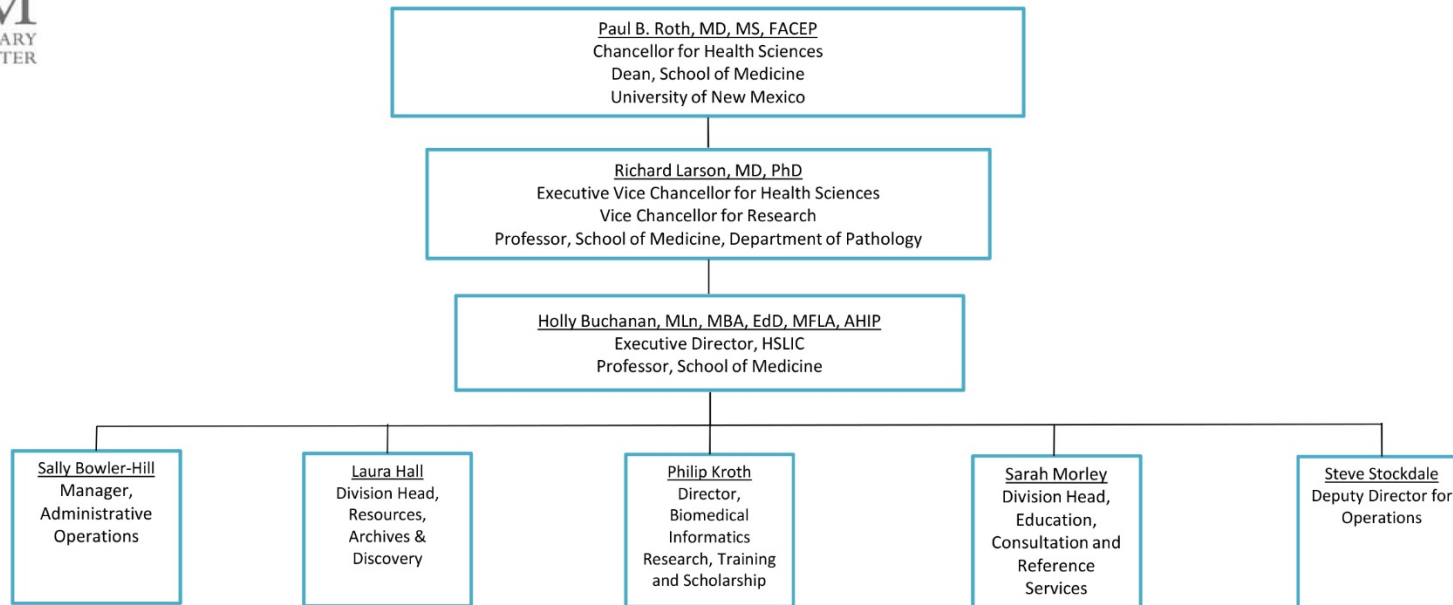
In September 2016, UNM received approval from the Accreditation Counsel for Graduate Medical Education (ACGME) for a new clinical informatics fellowship program in the School of Medicine's Department of Internal Medicine and led by HSLIC's Director of Biomedical Informatics Research, Training and Scholarship (BioMIRTS). The program's first fellow began in November 2016. HSLIC's partnership with the Department of Internal Medicine also expanded, with Dr. Stuart Nelson's appointment as Research Professor, toward the end of the fiscal year. During his appointment as Visiting Faculty, Dr. Nelson became a co-investigator on two Internal Medicine grants, and is working with the department to submit additional funding proposals.

FY2018 will bring more changes and new services, as HSLIC evolves to better serve its customers toward its vision of being New Mexico's agent for health knowledge.

ORGANIZATIONAL CHARTS

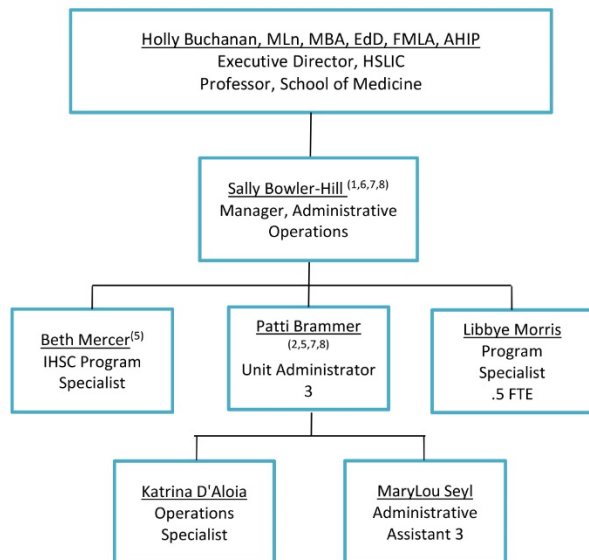


The University of New Mexico Health Sciences Library and Informatics Center





Administrative Services

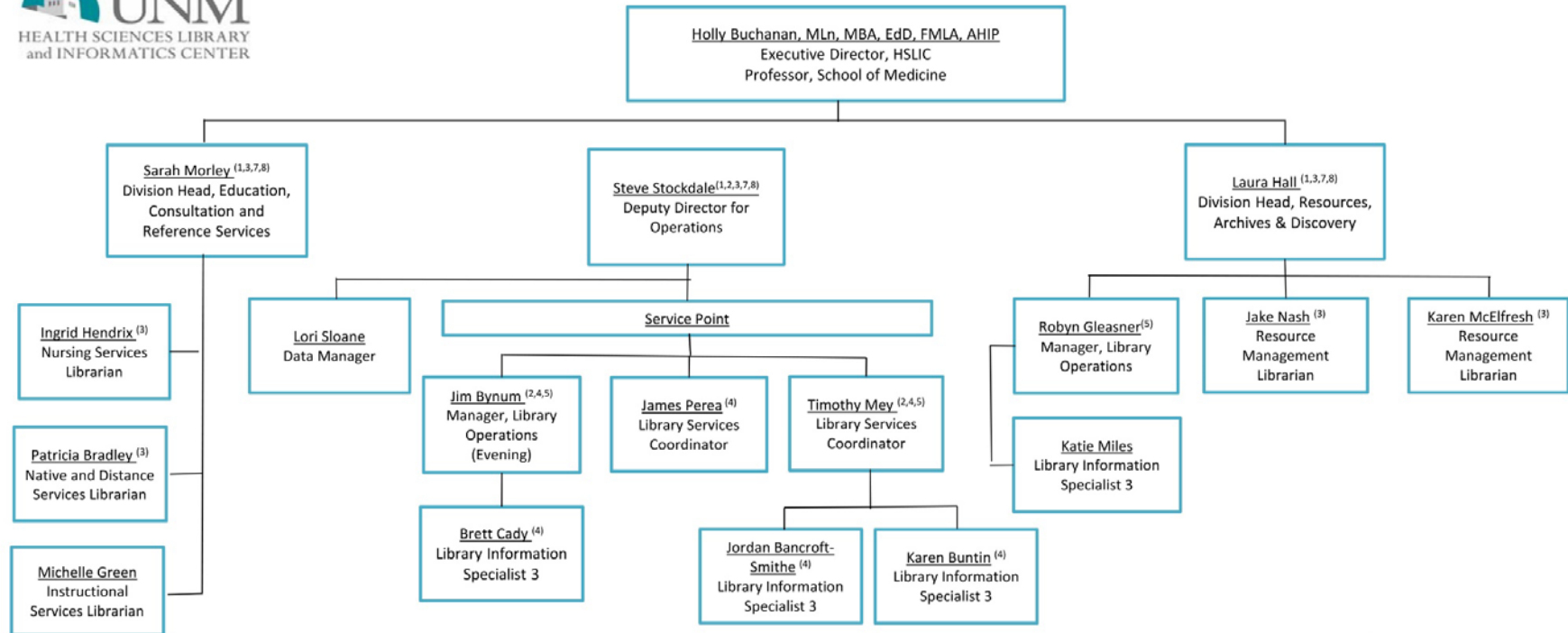


Legend
Managers (1)
Supervisors (2)
Faculty (3)
Service Desk (4)
Student Lead (5)
Executive Committee (6)
Strategic Planning (7)
OMT (8)

Revised June 2017



Library and Education Services



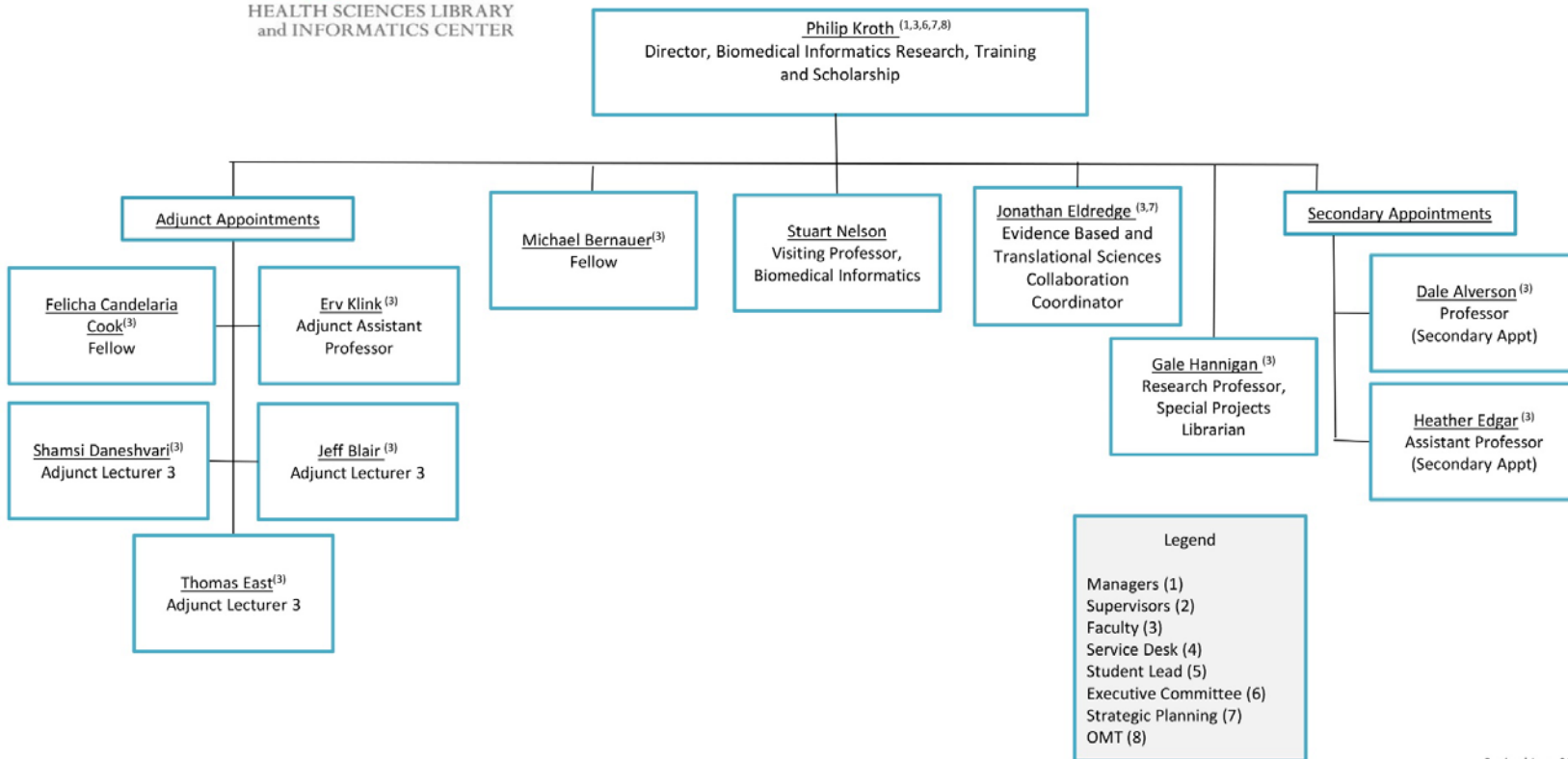
Legend

- Managers (1)
- Supervisors (2)
- Faculty (3)
- Service Desk (4)
- Student Lead (5)
- Executive Committee (6)
- Strategic Planning (7)

Revised June 2017



Biomedical Informatics Research, Training and Scholarship



Revised June 2017

UNIT ACCOMPLISHMENTS

DEPUTY DIRECTOR'S OFFICE AND SERVICE POINT

Steve Stockdale, MA, Deputy Director for Operations

The most significant impact on HSLIC Operations during the past year concerned the incorporation of the Service Point into the unit, and the transfer of the Tier 1 IT support from the HSLIC Service Point to the HSC Chief Information Office (CIO). The organizational restructuring began in July with the departure of the manager overseeing the Service Point. After a two-month transition period, the Deputy Director of Operations (DDO) assumed responsibility for Service Point operations and began a concerted effort to stabilize staffing, document critical processes, and develop key usage metrics. These metrics include tables, charts and graphs created from existing, and some new, data sources including: IT tickets, IT phone support calls, public computing usage, staff scheduling, usage of Interlibrary Loan (ILL), study room reservations, patron count trends by day and hour, and circulation.

A new day shift supervisor was hired in the fall and focused on documenting and standardizing desk operations, including implementing a new process for scheduling staff. There was also a project to analyze the component costs associated with the Interlibrary Loan service, which included fees to fulfilling libraries and services, copyright fees, and shipping for both lent and borrowed books, and also determining the key faculty and departments that were primary service users.

By December, based on the Service Point metrics developed earlier, HSLIC and the HSC CIO's Office prepared a plan to reconfigure how Tier 1 IT support is provided to customers. The plan was implemented in March 2017 and resulted in the Tier 1 IT personnel being transferred to the HSC CIO organization and assuming responsibility for Tier 1 tasks. The remaining HSLIC Service Point staff are now concentrating on providing a seamless experience for those requiring Tier 1 IT support along with delivering excellent service to our library patrons.

The Service Point developed a new, streamlined process by which students reserve study rooms. Previously, a labor-intensive email process was used to reserve group study rooms and individual study rooms could not be reserved. After investigating an automated system used by University Libraries, HSLIC licensed the application and implemented the new process in January 2017 for group study rooms. Due to the positive response to the automated reservation process, individual study rooms were added in February.

HSLIC Service Point staff were also integrally involved in planning for the new Domenici Center for Health Sciences Education building. The classroom reservations specialist made significant contributions to the overall building program plans with his in-depth knowledge and experience of HSC programs' curricula, requirements, and future needs.



Lori Sloane (l) of HSLIC discusses a data management plan with Joe Hoover, Ph.D., and Miranda Cajero of the UNM Community Health Program.

Ongoing activities involving the DDO continued. These included: 1) the Data Management manager expanded her support in the area of contracts and grants administrative support; 2) participating as a faculty library liaison, or envoy; 3) representing HSLIC on the UNM Emergency Management Committee and HSC on the UNM Data Governance Committee; and 4) chairing the Assessment Team which also contributed to the analysis of Service Point metrics that resulted in the organizational reconfiguration for IT support.

PLANNING AND BUSINESS SUPPORT

Sally Bowler-Hill, MA, PMP, Manager, Administrative Operations

A year after HSLIC's reorganization, during FY2017, members of the Planning and Business Support unit continued to reconfigure resources to adapt to changes and better serve our customers. These changes stretched across many of the unit's service areas, which include strategic planning, budget, fiscal management, purchasing, administrative support, human resources, facilities management, communications, fund development and grants management.

Human Resources

This year, HSLIC saw eight employees leave for new opportunities, and we welcomed six new hires, including a new Biomedical Informatics Research Fellow and Instructional Services Librarian faculty member. In March, HSLIC experienced a second reorganization, with Tier 1 technology support moving to the HSC CIO's Office, including two Service Point employees. In late spring, UNM also implemented a new system for faculty, staff and student recruitment, and unit staff adjusted HSLIC's processes and trained search committee members on how to use the new tool. Three HSLIC faculty completed promotion and tenure and will start FY2018 with their new titles.

Facilities

The HSLIC building experienced major upgrades this year. The restrooms on the fourth floor were remodeled with new fixtures, paint and tile and are now ADA accessible. The New Mexico Health Historical Collection room was remodeled with new paint and cork flooring; technology was added to the room; and it is now open for student study when not in use by researchers. Finally, in FY2017 all of the study chairs in the library, original to the building, were replaced with adjustable, wheeled office chairs that are more conducive to group study and can be easily moved around the library's study areas.

HSLIC also participated in big changes to the Domenici Center for Health Sciences Education during FY2017. A classroom and study rooms on the second floor of the West Wing were demolished to create the new gym space called HSC Wellness Center, which opened in May. Throughout the year, construction continued on the new Domenici Center classroom wing, which includes twelve classrooms, twenty small group rooms, a computerized testing center and class laboratories for the pharmacy, physical therapy and occupational therapy programs. Unit staff participated in regular construction meetings and planning sessions for the AV, furniture/fixtures and security. This building will open in August 2017.



This photo taken on Sept. 15, 2016, shows the continued construction in the area west of the Domenici Center. This expansion of the Domenici Center was made possible by GO Bond B, which New Mexico voters approved in 2014.

Interprofessional Healthcare Simulation Center (IHSC)

During FY2017, the IHSC Program Specialist assumed responsibility for scheduling the facility's clinic areas, seminar and debrief rooms, monitor room and staging area for simulated patients. As part of this transition, the Program Specialist implemented an interactive scheduling form to better assist faculty and staff in selecting the resources they will need when using this space. In addition, members of the HSLIC Planning and Business Support unit worked with faculty and leadership from the Colleges of Nursing and Pharmacy and the School of Medicine to investigate purchasing a simulation center management system. Towards the end of the fiscal year, the group began an RFP process to select a product they will recommend for installation as part of a major remodel of the IHSC to backfill space vacated by Pharmacy, whose class laboratories are relocating to the new Domenici Center classroom building.

Strategic Communications

This year, the communications Program Specialist conducted a card-sorting exercise (semiotic analysis) with HSC faculty, staff and students to help HSLIC determine how to reorganize its website to better reflect its new mission and vision. The HSLIC Communications Committee reviewed the results of the analysis and, as of late spring, were building a new site map and navigation for the website.

Business Support

FY2017 saw many changes to HSLIC's business support operations. In December, the university implemented a new application to manage travel, reimbursements and purchases made by one-time payment or with university corporate credit cards. Unit staff made significant updates to HSLIC's purchasing and travel processes to align with the new, fully-electronic system. HSLIC's Administrative Assistant 3 acted as the organization's "departmental champion" and trained HSLIC's corporate credit card holders on how to use the new system. Toward the end of the fiscal year, HSLIC's Unit Administrator 3 departed, and a new one was hired shortly thereafter.

In FY2018 the Planning and Business Support unit will continue to evolve to better serve HSLIC's mission, the new Domenici Center classroom building and the changing needs of the university.

BIOMEDICAL INFORMATICS RESEARCH, TRAINING AND SCHOLARSHIP (BIOMIRTS)

Philip Kroth, MD, MS, Director, Biomedical Informatics Research,
Training and Scholarship

Academic:

Biomedical Informatics (Research) Fellowship Program: Dr. Felicha Candelaria-Cook completed the Biomedical Informatics Fellowship curriculum in January of 2017. She continues to work with a mentor at the Mind Research Network to complete her research project in medical imaging to complete the last fellowship requirement which is the defense of her research. Michael Bernauer, PharmD, started the fellowship in July 2016 as the fifth fellow in the Program. He is the first pharmacist to enroll in the fellowship at HSLIC.

Clinical Informatics (Applied) Fellowship (funded by the Department of Internal Medicine in collaboration with HSLIC): The application for fellowship accreditation by the ACGME was approved in September of 2016 and our first fellow, Vipul Bodar, MD, started in November of 2016. One of Dr. Bodar's required projects focuses on improving the process for writing chronic narcotics prescriptions in the UNMH ambulatory setting.

Research:

The BioMIRTS Director completed the third year as principal investigator of a three year study in partnership with the Centura Health System in Colorado, Hennepin County Medical Center, Stanford University, and the University of Minnesota. The second phase of the study, a survey of more than 500 physicians at three different health care systems was completed. The Director secured a no-cost extension for the grant so the group could complete the analysis of the survey data.

Preliminary results of the first phase of the study (a series of physician focus groups) were presented at a conference titled “The Patient, the Practitioner and the Computer” on March 17 at Brown University in Providence, RI, and at the annual meeting of the Society of General Internal Medicine on April 17 in Philadelphia, PA. A manuscript submitted to a peer-reviewed journal is under review.



Stuart Nelson, MD, Visiting Professor

Dr. Stuart Nelson became a co-investigator on a National Library of Medicine Grant for further development of a statistical technique for comparing treatment outcomes using observational data. He is also co-investigator on a Patient Centered Outcomes Research Institute (PCORI) grant funded project on an observational study of bipolar disorder. Dr. Nelson is co-author on a paper on this work in the journal *Bipolar Disorder*. In addition, he was first author on a perspectives paper in the *Journal of the American Medical Informatics Association (AMIA)* on recognizing the intent of therapy in drug labels.

Dr. Jon Eldredge coauthored a peer-reviewed paper on the “Visualization of Vascular Injuries in Extremity Trauma” in *Medical & Biological Engineering & Computing*.

Service Partnerships:

UNM Health Sciences Center’s CTS/MSCR Programs: This year marked the completion of the tenth class of students in the BMI courses that HSLIC provides in support of the UNM HSC’s Certificate in Translational Sciences (CTS) and the Master’s of Science in Clinical Research (MSCR) Programs. The BioMIRTS Director stepped down as the instructor of record, passing that responsibility on to the Coordinator for Evidence Based and Translational Science. The course continues to receive excellent feedback from its students.

EDUCATION CONSULTATION AND REFERENCE

Sarah Morley, MLS, PhD, Division Head

In September 2016, the Education, Consultation and Reference Services (ECRS) unit underwent a series of transformations including new leadership, an amended mission, a name change, and a new faculty member hire. The unit, formerly known as Reference and User Support Services, included education and reference services and a combined library/technology services desk. Staff at the Service Point desk now report to the Deputy Director for Operations. Staff and students continue to answer general library questions, provide limited technology support as well as manage interlibrary loan.

The reconfigured ECRS division, consisting of four faculty members, has primary responsibility for supporting the educational and in-depth reference needs of students, faculty and staff at the Health Sciences Center. The unit also provides outreach services to individuals not affiliated with the University. Assistance from other HSLIC faculty and staff ensures our ability to provide these services to a wide array of campus programs and communities across the state.

This year the Division Head initiated a new online method of capturing reference statistics. This data is being used to examine reference hours, personnel and point-of-contact as we consider changes to the current service model. Consolidating course syllabi, PowerPoint presentations, handouts, and evaluation forms in one common online location is currently under discussion. The consolidation of these materials is expected to strengthen teaching capacity through partnership with HSLIC colleagues.



The new Education, Consultation and Reference Services team. In front is Ingrid Hendrix. In the back row, from left to right, are Michelle Green, Sarah Morley, and Pat Bradley.

Educational Activities

The ECRS team includes a Clinical Services Librarian, a Native and Distance Services Librarian, a Nursing Services Librarian, and an Instructional Services Librarian who was hired last fall. In addition to guest lecturing within various HSC undergraduate, graduate, and post-graduate curricula and teaching individual sessions on library supported resources such as Zotero, faculty are co-instructors or small group facilitators for specific courses. These courses include Clinical Reasoning 1, Clinical Reasoning Remediation, and Doctoring IV in the School of Medicine; Drug Information Advance Pharmacy Practice rotation; graduate level Nursing Research online course. Division members play an active role on the BA to MD Admissions committee and curriculum committees for Medicine, Nursing and Pharmacy.

Native and Distance Services

In FY2017, 37 outreach activities, reaching 887 individuals were supported through National Library of Medicine (NLM) and the National Network of Libraries of Medicine South Central Region funding. Events targeted health information outreach training to public/tribal libraries, community health educators, school-based health workers and practitioners who provide medical services to the people of New Mexico. One project this year provides a professional development opportunity for librarians serving tribal communities while two projects targeted tribal libraries and the Four Corners emphasizing the NLM Native Voices online exhibit.

RESOURCES, ARCHIVES AND DISCOVERY AND SPECIAL COLLECTIONS

Laura Hall, MFA, Division Head

The Resources, Archives and Discovery (RAD) unit continued to support and provide collection resources for the ever-evolving UNM HSC's academic, research and clinical programs. We did this through a number of projects and activities during this past year.

Resources and Activities

Throughout the summer and fall of 2016, members of RAD conducted an inventory to ensure that the catalog matched items physically on the shelves. The RAD project team scanned 91,441 items including books and bound journals in the library and books offsite. Approximately 178 books were on the shelf, but not in the catalog; 49 titles were re-cataloged. Approximately 750 books were in the catalog, but not

on the shelf: 450 presumed stolen and 300 most likely weeded and not deleted from the system. Forty of these titles were replaced with a preference for eBooks. In addition to the inventory, RAD took this opportunity to clean the bound journals and shelving as well as combine books with accompanying CDs.

Throughout the fall and spring months, Jacob Nash, resource management librarian in RAD, took a lead role in migrating UNM HSC digital assets and records to a new institutional repository platform. The decision was made in FY16 to migrate the UNM repository from DSpace to Digital Commons by bepress. This was a collaborative effort between University Libraries and HSLIC.

In the winter of 2016, the NMHHC room was repainted and new flooring was installed. The room was also updated with a computer and touch screen monitor. The room was reopened in March 2017, and can be reserved through the HSLIC online study room reservation system.

In the spring months, members of RAD partnered with Patrice Repar, associate professor of music and director of the Arts-in-Medicine Program, to conduct a book drive to help update the library of the Malawi College of Health Sciences in Blantyre, Malawi. The project received support from the African Library Project (ALP), an organization that coordinates book drives and ships books to libraries in Africa. RAD created a set of collection criteria based on the needs of the College and solicited donations at UNM HSC campus and the Albuquerque community from February 2017 to April 2017. In the end, we collected 413 books for the Malawi College of Health Sciences. The books were shipped, on two pallets and weighing 1,455 pounds, to ALP's facility in New Orleans in May 2017, and were shipped to Africa in July.

Due to UNM and the state of New Mexico budget shortfalls, the HSLIC collection budget was reduced by \$35,000 during FY17. As a result, print journals and binding was ceased. In addition, we made the decision to cancel JoVE, OCLC License Manager, and lower our spending on print and eBooks.

Exhibits

A new exhibit was curated and installed in the NMHHC room entitled, "Price of War: Medical Advances During Wartime." The exhibit features a number of our historical texts, and the Lovelace and Sam White collections.

During 2016 and the spring of 2017, HSLIC partnered with a community group, The True Self Project, to install an exhibit in Domenici Center for Health Sciences Education. The exhibit features artworks that reflect upon the nature of true and false selves. The exhibit was installed in the west and auditorium lobbies in June 2017, and will be on display through December 2017.

Personnel

In October 2016, Timothy Mey accepted the day-time manager position at HSLIC's Service Point. A search was conducted and Katherine Miles joined the RAD unit in March 2017. She manages the serials and knowledge base in the ILS. Also in October, Misty Bargman resigned her position as the archivist assistant in RAD. Due to budget restraints, the archivist assistant position was eliminated.



The True Self Project will be on display June 2017 through December 2017.

SPONSORED RESEARCH

SPONSORED RESEARCH

American Association of Colleges of Pharmacy (AACP) Section of Library and Information Science (LIS) Professional Development (Sarah Knox Morley, MLS, PhD, AHIP, PI)

The purpose of this stipend was attendance at the 2016 AACP Annual Meeting in Anaheim, CA. Dr. Morley, faculty envoy to the UNM College of Pharmacy, was provided the opportunity to meet pharmacy librarians from other institutions and take part in programming specific to libraries. During the meeting Dr. Morley was mentored by Donald A. Godwin, PhD, UNM COP Executive Association Dean for Education. This mentorship enhanced an already strong relationship and led to a deeper knowledge of the pharmacy curriculum. (Grace and Harold Sewell Memorial Fund Stipend, \$1,000, July 2016)

Continuing Health Information Outreach in New Mexico, Rural Health Outreach Award (Patricia Bradley, MLS, AHIP, Principal Investigator)

Through this project, HSLIC focused on sustaining the connections with the many organizations in New Mexico it has partnered with in the past to raise awareness of free health information resources available through the National Library of Medicine. This was accomplished through an array of demonstrations, classes, exhibits, and health fairs. This awareness building specifically targeted rural, underserved populations and those who provide services for them in New Mexico.

(National Library of Medicine award number UG54LM012345 through the National Network of Libraries of Medicine, South Central Region; \$10,000, September 2016-April 2017)

Enhancing CBPR Practice through Provision of Expert Information Skills (Nina Wallerstein, DrPH, MPH, PI, Jacob L. Nash, MSLIS, AHIP co-investigator, Kasim Ortiz, MS, co-investigator). Funded through the UNM College of Population Health, this Administrative Supplement for Informationist Services in NIH-funded Research Projects seeks to integrate an Informationist skilled in literature retrieval and data management best practices into an experienced Community-Based Participatory Research (CBPR) team to enhance information-seeking practices of the team and to build an innovative information system that integrates literature with empirical data on measures and metrics within CBPR collected through the parent grant. The products of this activity will be a comprehensive evidence map of literature, both published and unpublished, from the Community-Engaged Research (CEnR) approaches that will inform the preparation of systematic reviews, a refresh and expansion of an interactive CBPR model that connects measures and metrics with data, and a thorough evaluation of the impact of the process of integrating an informationist in a CBPR/CEnR team as well as the outcomes of this partnership. (National Institutes of Nursing Research (NINR), agreement # 3 R01 NR015241-03S1, 2 yr total: \$75,744; June 2017-May 2019).

Minimizing Stress, Maximizing Success of Physician's Use of Health Information and Communications Technologies (Philip Kroth, M.D., M.S., PI). This funding supports Dr. Kroth's research into determining the design features of health information and communications technologies that are most associated with user stress and frustration. The research is a multicenter collaboration with Centura Health Physician Group in Colorado, Hennepin County Medical Center, Stanford University, and the University of Minnesota. (Agency for Healthcare Research and Quality; #AHRQ 1 R18 HS022065-01A1, 3 yr total: \$603,631; June 2014-May 2017).

Native Voices Outreach: New Mexico's Tribal Libraries and the Four Corners (Patricia Bradley, MLS, AHIP, Principal Investigator). The purpose of the Native Voices Outreach: New Mexico's Tribal Libraries and the Four Corners was to provide access to the National Library of Medicine's Native Voices: Natives Peoples' Concepts of Health and Illness online exhibit to libraries serving Native American populations in New Mexico and the Four Corners states. Eight libraries were provided iPads containing updated Native Voices content along with supporting educational materials. (Center for Public Service Communications, Agreement # 2016-13, \$23,957, July 25, 2016-January 31, 2017)

Native Voices Outreach: New Mexico’s Tribal Colleges and Universities (Patricia Bradley, MLS, AHIP, Principal Investigator). The purpose of the Native Voices Outreach: New Mexico’s Tribal Colleges and Universities (TCUs) was to provide access to the National Library of Medicine’s Native Voices: Native Peoples’ Concepts of Health and Illness online exhibit to New Mexico’s TCUs: Dine’ College Shiprock, Institute of American Indian Arts Santa Fe, Navajo Technical University Crownpoint and the Southwest Indian Polytechnic Institute Albuquerque. The four tribal college libraries were provided iPads containing updated Native Voices content along with supporting educational materials. (Center for Public Service Communications, Agreement # 2016-9, \$14,833, May 1-August 31, 2016)

Professional Development for Librarians Serving Tribal Communities in New Mexico, Arizona, Colorado and Oklahoma (Patricia Bradley, MLS, AHIP, Principal Investigator)

The purpose of the project is to provide financial support to librarians serving Native American communities in New Mexico, Arizona, Colorado and Oklahoma which will afford them the opportunity to attend the annual meeting of the South Central Region of the Medical Library Association. The meeting-- Go West the Sky’s the Limit - takes place October 13-18, 2017 at the Hotel Albuquerque bringing together health sciences librarians from throughout the region to learn, share and network. (Center for Public Service Communications, Agreement # 2017-10, \$24,850, May 1-September 30, 2017)

Psychometric Testing of the Medical Information Literacy Questionnaire (MILQ): A Validation Study.

(Sarah Knox Morley, MLS, PhD, AHIP and Jay Parkes, Ph.D. Co-PI) This study, funded by a SEAC grant, enables additional testing of the psychometric properties of a previously developed information literacy instrument. The MILQ assesses skills covering five information literacy domains and is intended for use with resident physicians. (UNM School of Medicine SEAC grant, \$8,240, August 1, 2015-July 31 2017)

APPENDIXES

ENDOWMENTS

George L. and Mary W. Voelz Endowment, August 2004–present
The Larry and Nedra Gordon Endowment for Environmental Health, June 2005–present
HSLIC Collections Endowment, November 2005–present
HSLIC Geriatric Collection Endowment, December 2006–present
Waldo Rogers Endowment, October 2006–present

SERIAL TITLES CANCELLED 2016-17

(12 titles)

<i>Chronicle of Higher Education</i> (print)	<i>Neurological Research</i>
<i>International Journal of Pharmaceutical Compounding</i>	<i>New England Journal of Medicine</i> (print)
<i>JAMA</i> (print)	<i>New York Times</i> (print)
<i>Nature</i> (print)	<i>Prehospital Emergency Care</i>
<i>Nature Chemical Biology</i>	<i>Teaching and Learning in Medicine</i>
<i>Nature Plants</i>	<i>Wall Street Journal</i> (print)

SERIAL TITLES ADDED 2016-17

(12 titles)

<i>Radiography</i>	<i>Home Healthcare Now</i>
<i>Journal of Neurotrauma</i>	<i>Journal of Acute Care Physical Therapy</i>
<i>Telemedicine and e-Health</i>	<i>Topics in Obstetrics & Gynecology</i>
<i>AJSP: Reviews and Reports</i>	<i>Taylor and Francis Medical Package</i>
<i>Clinical Spine Surgery</i>	

PUBLICATIONS

Eldredge, Jon

Eldredge JD. Integrating research into practice. *Journal of the Medical Library Association* 2016 Oct; 104 (4): 333-7.

Eldredge JD, Marshall JG, Brettle A, Holmes HN, Haglund L, Wallace R. Health libraries. In: Koufogiannakis D, Brettle A (Eds.). *Being evidence based in library and information practice*. London: Facet Publishing, 2016: 121-32.

Gleasner, Robyn

Gleasner R. Pre-ILS migration catalog cleanup project. In *the Library with the Lead Pipe*. [serial on the Internet]. 2016 Aug. Available from:
<http://www.inthelibrarywiththeleadpipe.org/2016/catalog-cleanup/>

Hendrix, Ingrid

Pettine K, Hendrix I, Barkocy M. Impairment matched interventions and toe walking outcomes: A retrospective chart review. Poster presented at American Physical Therapy Association Combined Sections Meeting, San Antonio, TX, February 2017.

Kroth, Philip

Young KM, Kroth PJ. *Healthcare USA: Understanding its organization and delivery*. 9th ed. Burlington, MA: Jones & Bartlett; Accepted: January 9, 2016. Date of publication: Feb 22, 2017.

McElfresh, Karen

Nash JL, McElfresh KR. A journal cancellation survey and resulting impact on interlibrary loan. *J Med Libr Assoc*. 2016 Oct;104(4):296–300.

Morley, Sarah

Pierce JR, Morley SK, West T, and Banks L. Older adults improving long term-care facility disaster preparedness and response: A Literature review. *Disaster Medicine and Public Health Preparedness*. Epub Aug 2016. PubMed PMID: 27511274.

Gebauer S., Morley SK, Haozous E, Finlay EE, Camarata C, Fahy B, Fitzgerald E, Harlow K, and Marr L. Palliative care for American Indians and Alaska Natives: A Review of the literature. *Journal of Palliative Medicine*. 19:1331-40, 2016. PubMed PMID: 27828727.

Nash, Jacob

Nash JL, McElfresh KR. A journal cancellation survey and resulting impact on interlibrary loan. *J Med Libr Assoc*. 2016 Oct;104(4):296–300.

Nelson, Stuart

Ursu O; Holmes J, Knockel J; Bologna C, Yang J, Mathias S, Nelson S, Oprea T. DrugCentral: online drug compendium. *Nucleic Acids Res*. 45 (D1): D932-39.

PRESENTATIONS, EXHIBITS AND DEMONSTRATIONS

Bradley, Patricia

- Family Medicine Resident training, lecturer, Albuquerque, NM, July 2016
- National Diversity in Libraries Conference, presenter, Los Angeles, CA, August 2016
- Clinical Reasoning 1, facilitator, Albuquerque NM, August 2016
- Clinical Reasoning 1, facilitator, Albuquerque NM, 3 sessions, September 2016
- Cancer Services of New Mexico Family Cancer Retreat Fall 2016, exhibitor, Albuquerque NM, September 2016
- SOM Faculty Quick Start, presenter, Albuquerque NM, September 2016
- Native Voices Outreach, presenter, Shiprock NM, October 2016
- SCC/MLA Annual Conference, presenter, Galveston TX, October 2016
- Clinical Reasoning 1, facilitator, Albuquerque NM, October 2016
- Clinical Reasoning 1, facilitator, Albuquerque NM, 3 sessions, November 2016
- Native Voices Outreach, demonstration, Santo Domingo NM, November 2016
- Native Voices Outreach, demonstration, San Ildelfonso NM, November 2016
- Native Voices Outreach, demonstration, Laguna NM, November 2016
- Native Voices Outreach, demonstration, Durango CO, November 2016
- Native Voices Outreach, demonstration, Santo Tesuque NM, November 2016
- Clinical Reasoning 1, facilitator, Albuquerque NM, 2 sessions, December 2016
- Native Voices Outreach, demonstration, Farmington NM, January 2017
- Native Voices Outreach, demonstration, Torreon NM, January 2017
- Native Voices Outreach, demonstration, Tsaille AZ, January 2017
- University of St Francis Physician Assistant Orientation session 1, instructor, Albuquerque NM, January 2017
- University of St Francis Physician Assistant Orientation session 2, instructor, Albuquerque NM, January 2017
- Locating Health and Medical Information, instructor, Native Health Initiative Healers of Tomorrow, Albuquerque NM, January 2017
- KOB Health Fair, National Library of Medicine, exhibitor, Albuquerque, NM, January 2017
- 35th Annual NMAFP Winter Refresher, exhibitor, Albuquerque NM, February 2017
- HED 371, Introduction to Public and Community Health, lecturer, Albuquerque NM, 2 sessions, February 2017
- Rio Grande Chapter Special Libraries Association, co-presenter, Albuquerque, NM, March 2017
- Kaleidoscope Health & Craft Expo, National Library of Medicine, exhibitor, Albuquerque, NM, March 2017
- New Mexico Public Health Association 2017 Annual Conference, presenter, Albuquerque NM, April 2017
- New Mexico Public Health Association 2017 Annual Conference, exhibitor, Albuquerque NM, April 2017
- New Mexico Library Association mini-conference, exhibitor, Las Vegas NM, April 2017
- New Mexico Library Association mini-conference, presenter, Las Vegas NM, April 2017
- Native Voices Outreach, presenter, Tsaille AZ, April 2017
- Feria de Salud, exhibitor, Albuquerque NM, April 2017
- Cancer Services of New Mexico, Family Cancer Retreat Spring 2017, exhibitor, Albuquerque NM, April 2017

Eldredge, Jon

- Pavlik DF, Gill A, Muller M, Eldredge J, Eickman ME, Dehority W. Salmonella osteomyelitis in immunocompetent children: A case series and review of the literature. *Journal of Investigative Medicine* 2016, 64:280. (Meeting Abstract).
- Eldredge J. Responding proactively to “fake news.” Paper. Ninth International Evidence Based Library and Information Practice Conference. Philadelphia, PA. June 18-21, 2017.
- Spencer AJ, Eldredge JD. Systematic reviews: roles for librarians. Poster. Medical Library Association Annual Meeting. Seattle, WA. May 27-31, 2017.

Gleasner, Robyn

- Gleasner R, McElfresh K. Ideas and insights for conducting a library inventory using WMS. Presented at: New Mexico Library Association Annual Meeting; 2016 Nov; Albuquerque, NM.

Green, Michelle

- “Zotero Basics”, instructor, Albuquerque, NM, November 2016-June 2017 (monthly)
- KOB Health Fair, National Library of Medicine, exhibitor, Albuquerque, NM, January 2017
- Pharm 547, Research Design and Analysis, lecturer, Albuquerque, NM, March 2017
- Kaleidoscope Health & Craft Expo, National Library of Medicine, exhibitor, Albuquerque, NM, March 2017
- UNM Hospital Speech and Language Pathology Department training, presenter, Albuquerque, NM, May 2017
- Pharm 770, Drug Information Advance Pharmacy Practice Rotation, co-instructor, Albuquerque, NM, June 2017
- Ph.D. and DNP Nursing Orientation, lecturer, Albuquerque, NM, June 2017

Hall, Laura

- SOM Library Orientation, co-presenter, Albuquerque, NM, July 2016.
- Hall LJ, Bradley P, Hannigan G. Taking outreach Out: On the Road with NLM’s Native Voices Traveling Exhibit. Paper presented at: South Central Chapter of the Medical Library Association; 2016, October 25; Galveston, TX.
- HSLIC Collection Update, co-presenter, Albuquerque, NM, November 2016.
- 2017 Annual Eyewitness News Health Fair, exhibitor, Albuquerque, NM, January 2017.
- Price of War: Medical Advances During Wartime. Exhibit curator and author, Albuquerque, NM, March 2017.
- Overview of Special Collections and Exhibits at UNM HSLIC. Presentation at Special Libraries Association Rio Grande Chapter – HSLIC programs; 2017, March 17; Albuquerque, NM.
- A Historical Look at New Mexico’s Public Health. Poster presented at: New Mexico Public Health Association Annual Meeting; 2017, April 5; Albuquerque, NM.
- McElfresh KR, Hall LJ, Repar P. Global Health Outreach: Organizing a Book Drive for Malawi. Paper presented at: Medical Library Association Annual Meeting; 2017 May 30; Seattle, WA.

Hendrix, Ingrid

- UNMH Nurse Educators Foundation Series, instructor, Albuquerque, NM July 2016
- Pharm 770, Drug Information Advance Pharmacy Practice Rotation, co-instructor, Albuquerque, NM, July and August 2016
- N503 Nursing Research online course (5 sessions), co-instructor, Albuquerque, NM July - August 2016
- CTS/MSCR Zotero, lecturer, Albuquerque, NM August 2016
- SOM Doctoring I course for 1st year medical students, presenter, Albuquerque, NM August 2016
- Orthopaedic Resident Research Meeting, presenter, Albuquerque, NM, August, 2016
- PT534 Evidence Based Practice 1, lecturer, Albuquerque, NM August 2016
- OT EBM Course, “Advanced Searching”, lecturer, Albuquerque, NM September 2016

- OT Advocacy and Community class, presenter, Albuquerque, NM September 2016
- N332 Introduction to Nursing Research, lecturer, Albuquerque, NM September 2016 and January 2017
- Literature searching for MES II program, co-instructor, Albuquerque, NM October 2016
- CON Research Colloquium, “Searching the Educational Literature”, presenter, Albuquerque, NM November 2016
- OT634 Grant Funding Resources, lecturer, Albuquerque, NM November 2016
- “Considerations in Caring for People with Physical Disabilities”, section within SOM On Doctoring IV course for 2nd year medical students, co-instructor, Albuquerque, NM, September – November, 2016 (5 sessions)
- KOB Health Fair, exhibitor, Albuquerque, NM, January 2017
- UNMH Nurse Educators Foundation Series, instructor, Albuquerque, NM, January 2017
- OMED Workshop – Medical Education Scholarship, co-instructor, Albuquerque, NM, February 2017
- ENT Residents, Literature Searching, presenter, Albuquerque, NM, March 2017
- UNMH Nurse Residents, Literature Searching, presenter, Albuquerque, NM March and June 2017
- OT Life After UNM, presenter, Albuquerque, NM April 2017 and May 2017
- UNMH Rehabilitation Department, Resources and Searching, presenter, Albuquerque, NM June 2017

Kroth, Philip

- Monsen K, Dua P, Wangia-Anderson V, Kroth PJ. Electronic health record resources used in informatics training programs: Results of an AMIA Academic Forum research survey. American Medical Informatics Association iHealth 2017 Clinical Informatics Conference, La Jolla, CA, June 8, 2017. (Peer Reviewed Abstract and Presentation)
- Babbott S, Kroth PJ, Linzer, M, Poplau S. What we know and what we can do about electronic health records, clinician stress and burnout. SGIM Annual Meeting 2017: Resilience & Grit - Pursuing organizational change & preventing burnout in GIM, Washington, DC. April 21, 2017. (Peer Reviewed Abstract and Presentation)
- Babbott S, Corrigan K, Kroth, PJ, Morioka-Douglas N, Veres S. Symposium on factors associated with the use of health information and communications technologies & clinician stress & burnout: What we know & what we can do. The patient, the practitioner, and the computer: Holding on to the core of our healing professions in a time of technological change conference, Providence, RI. March 17, 2017. (Peer Reviewed Abstract and Presentation)
- Kurtz T, Martinez M, Fritch R, Kroth PJ. Do patients who are given prescriptions for shingles vaccine, get vaccinated? Society of Teachers of Family Medicine Conference on Practice Improvement, Newport Beach, CA. December 1-4, 2016. (Peer Reviewed Abstract and Presentation)
- Kroth PJ. Factors associated with clinician stress and burnout: Results from the MS-Squared Study (Minimizing Stress, Maximizing Success from Health Information and Communications Technologies). Park Nicollet Health System, Minneapolis, MN, July 12, 2016. (Invited Presentation)

McElfresh, Karen

- Zotero class, instructor, Albuquerque, NM, July 13, 2016.
- SOM Library Orientation, co-presenter, Albuquerque, NM, July 2016.
- Zotero class, Instructor, Albuquerque, NM, July 20, 2016.
- BIOM 564, “Copyright & Public Access”, guest lecturer, Albuquerque, NM, August 2016.
- Medical Laboratory Sciences orientation, guest lecturer, Albuquerque, NM, August 2016. HED 582, “Orientation to Library Resources”, guest lecturer, September 2016.
- Zotero class, Instructor, Albuquerque, NM, September 2016.

- Zotero class, Instructor, Albuquerque, NM, October 2016.
- HSLIC Collection Update, co-presenter, Albuquerque, NM, November 2016.
- Gleasner R, McElfresh KR. Ideas and Insights for Conducting a Library Inventory using WMS. Paper presented at: New Mexico Library Association Annual Conference; 2016 Nov 3; Albuquerque, NM.
- McElfresh KR, Hall LJ, Repar P. Global Health Outreach: Organizing a Book Drive for Malawi. Paper presented at: Medical Library Association Annual Meeting; 2017 May 30; Seattle, WA.

Mercer, Beth

- Orientation tours of the IHSC/HSLIC (32), Albuquerque, NM, July 2016–June 2017
- Requesting IHSC Scheduling trainings (5), Albuquerque, NM July 2016-June 2017
- IHSC Area Safety Emergency Plan in-services (2), Albuquerque, NM July 2016-June 2017

Morley, Sarah

- Pharm 770, Drug Information Advance Pharmacy Practice Rotation, co-instructor, Albuquerque, NM, July 2016 and August 2016
- Pharm 728, Pharmacy Research and Informatics, lecturer and lab facilitator, Albuquerque, NM, September – November, 2016
- Freshman Learning Community 610, “So you want to be a doctor”, lecturer, Albuquerque, NM, September 2016
- HED 528, Advanced Multicultural Research, lecturer, Albuquerque, NM, September 2016
- “Information Resources for Pharmacy Preceptors”, ACPE Continuing Education course, presenter, Albuquerque, NM, October 2016
- Literature searching for MES II program, co-instructor, Albuquerque, NM October 2016
- “Considerations in Caring for People with Physical Disabilities”, section within SOM On Doctoring IV course for 2nd year medical students, co-instructor, Albuquerque, NM, September – November, 2016 (5 sessions)
- “Psychometric Properties of the Medical Information Literacy Questionnaire (MILQ),” paper presented at The Generalist in Medical Education annual conference, Seattle, WA, November 2016.
- Palliative Care Interest Rounds, presenter, Albuquerque, NM, December, 2016
- KOB Health Fair, National Library of Medicine, exhibitor, Albuquerque, NM, January 2017
- “Searching the Education Literature”, OMED Lunch@Learn, co-presenter, Albuquerque, NM, February 2017
- Family Medicine Resident training, lecturer, Albuquerque, NM, February 2017
- Rio Grande Chapter Special Libraries Association, co-presenter, Albuquerque, NM, March 2017
- Pharm 547, Research Design and Analysis, lecturer, Albuquerque, NM, March 2017
- 2nd Annual Infectious Disease Research Conference, presenter, Albuquerque, NM, April 2017
- Pharm 770, Drug Information Advance Pharmacy Practice Rotation, co-instructor, Albuquerque, NM, June 2017

Nash, Jacob

- SOM Library Orientation, co-presenter, Albuquerque, NM, July 2016
- BIOM 564 session on Managing Your Online Scholarly Identity, instructor, Albuquerque, NM, July 2016
- Emergency Medicine Resident Orientation, presenter, Albuquerque, NM, July 2016
- Nutrition 512 session on Searching for Evidence, instructor, Albuquerque, NM, August 2016
- EMS 311 Medical Assessment and Management session on Evidence Based Practice, instructor, Albuquerque, NM, August 2016
- Library Support for the Medical Student Scholarly Project, presenter, Albuquerque, NM, September 2016
- Online Scholarly Identity, presenter, Albuquerque, NM, September 2016

- Using the Library for MPH students, presenter, Albuquerque, NM, September 2016
- Freshmen Learning Community So You Want To Be a Doctor?, instructor, Albuquerque, NM, September, 2016
- BIOM410 session on Searching for Evidence, instructor, Albuquerque, NM, October 2016
- HSLIC Collection Update, co-presenter, Albuquerque, NM, November 2016
- SOM Faculty Intellectual Property, presenter, Albuquerque, NM, January 2017
- Internal Medicine Clerkship Session on Library Resources, instructor, Albuquerque, NM, February 2017
- BIOM 410 session on Searching for Evidence, instructor, Albuquerque, NM, February 2017

Perea, James

- Domenici Center AV demonstrations (37), presenter, Albuquerque, NM
- EMS demonstrations (13), presenter, Albuquerque, NM
- HSLIC tours/orientations (4), presenter, Albuquerque, NM

Stockdale, Steve

- HSLIC tour and new student orientation for School of Medicine, Albuquerque, NM, July 2016
- HSLIC services and tour, presenter, Radiologic Sciences new-student orientation, Albuquerque, NM, August 2016
- HSLIC services presenter for School of Medicine Faculty Quick Start orientation, Albuquerque, NM, November 2016
- Demonstration and presentation on data governance/management for School of Medicine administrative staff, Albuquerque, NM, June 2017
- Demonstration and consultation with pediatrics faculty regarding email management practices, Albuquerque, NM, June 2017

IN-SERVICES JULY 2016 – JUNE 2017

Special Topics		
Subject	Lead Presenter	Date
MISO Survey Results	Sally Bowler-Hill	July 20, 2016
Data Management Planning	Steve Stockdale	July 27, 2016
HSLIC Budget	Sally Bowler-Hill	August 17, 2016
SCC/MLA Conference Reports	Sarah Morley	November 8, 2016
Annual Report	OMT Mangers	December 14, 2016
Outreach Services	Pat Bradley	March 15, 2017
Medical Subject Headings (MeSH)	Stuart Nelson	March 22, 2017

Note: Data shown are from the latest date the In-Service was presented if given more than once.

LIBRARY HOURS 2016–17

Days	Hours
Monday–Thursday	7 a.m. – 11 p.m.
Friday	7 a.m. – 6 p.m.
Saturday	9:30 a.m. – 6 p.m.
Sunday	12 p.m. – 11 p.m.

2017 STAFF APPRECIATION AND AWARDS

Katrina D'Aloia, MBA	Degree or Certification
Tim Mey, MLIS	Degree or Certification
Philip Kroth, MD, MS	Major Publication
Katrina D'Aloia, MBA	Most Professional Growth
MaryLou Seyl	Outstanding Customer Service
Sally Bowler-Hill, MA, PMP	Outstanding Performance
Library Collection Inventory Project Team	Outstanding Process Improvement

HSLIC STAFF ROSTER 2016–17

Name	Unit, Title	Start Date	End Date
Bancroft-Smithe, Jordan	Service Point, Library Information Specialist 3	05-15-17	
Bernauer, Michael	Biomedical Informatics Research, Training & Scholarship, Biomedical Informatics Fellow	07-01-16	
Bargman, Misty	Resources, Archives & Discovery, Archivist Assistant	02-02-15	10-19-16
Bell, Vernon	Service Point, IT Support Tech 3	04-07-14	03-18-17
Bowler-Hill, Sally	Planning & Business Support, Manager Administrative Operations	09-08-03	
Bradley, Patricia	Education, Consultation & Reference Services, Native and Distance Services Librarian	03-29-04	
Brammer, Patricia	Planning & Business Support, Unit Administrator 3	06-19-17	
Brandenburg, Cathy	Planning & Business Support, Unit Administrator 3	04-30-12	05-01-17
Buchanan, Holly Shipp	Administration, HSLIC Executive Director	08-15-97	
Buntin, Karen	Service Point, Library Information Specialist 3	04-14-14	
Bynum, Jim	Service Point, Manager Library Operations	05-14-01	
Cady, Brett	Service Point, Library Information Specialist 3	05-15-17	

Health Sciences Library and Informatics Center, Annual Report FY2016–17

Holly Shipp Buchanan, EdD, Executive Director

Name	Unit, Title	Start Date	End Date
Candelaria-Cook, Felicha	Biomedical Informatics Research, Training & Scholarship, Fellow	01-02-14	12-31-16
Cole, Robert	Service Point, IT Support Tech 2	10-21-14	11-04-16
D'Aloia, Katrina	Planning & Business Support, Operations Specialist	09-06-13	
DiCicco, Zachary	Service Point, IT Support Tech 2	09-19-16	1-20-2017
Eldredge, Jon	Biomedical Informatics Research, Training & Scholarship, Evidence Based and Translational Sciences Collaboration Coordinator	01-01-86	
Gleasner, Robyn	Resources, Archives & Discovery, Manager, Library Operations	12-02-13	
Green, Michelle	Education, Consultation & Reference Services, Instructional Services Librarian	09-19-16	
Hall, Laura	Resources, Archives & Discovery, Division Head	04-01-04	
Hannigan, Gale	Biomedical Informatics Research, Training & Scholarship, Research Professor	06-27-13	
Hendrix, Ingrid	Education, Consultation & Reference Services, Nursing Services Librarian	12-03-01	
Kroth, Philip	Biomedical Informatics Research, Training & Scholarship, Director	03-01-04	
McElfresh, Karen	Resources, Archives & Discovery, Resource Management Librarian	10-14-13	
Mercer, Beth	Planning & Business Support, Program Specialist IHSC	07-08-13	
Mey, Timothy	Resources, Archives & Discovery, Library Information Specialist 3	10-27-14	
Miles, Katie	Resources, Archives & Discovery, Resource Management Librarian	03-06-17	
Morley, Sarah	Education, Consultation & Reference Services, Clinical Services Librarian	06-01-99	
Morris, Libbye	Planning & Business Support, Program Specialist	01-23-12	
Munson, Nathan	Service Point, IT Support Tech 1	11-23-16	03-18-17
Nash, Jacob	Resources, Archives & Discovery, Resource Management Librarian	10-01-13	
Nelson, Stuart	Biomedical Informatics Research, Training & Scholarship, Research , Visiting Professor	06-15-15	
Nepal, Naresh	Biomedical Informatics Research, Training & Scholarship, Research , Research Scientist 3	05-02-16	06-30-17
Perea, James	Service Point, Library Services Coordinator	05-22-95	
Rogers, Monica	Reference & User Support Services, Division Head	09-21-15	07-28-16
Sando, Nichelle	Service Point, IT Support Tech 1	07-11-16	10-28-16
Seyl, MaryLou	Planning & Business Support, Administrative Assistant 3	08-02-99	
Sloane, Lori	Deputy Director's Office, System Administrator	06-25-12	
Stockdale, Steve	Deputy Director, HSLIC	01-05-15	

Graduate Students and Student Assistants	
Bancroft-Smithe, Jordan (05-2017)	Martinez, Olivia
Cady, Brett (05-2017)	Mohon, Hugh (12-2016)
Chavez, Julian	Olaniyi, Philip (05-2017)
Corrigan, Kathryne	Ortiz, Felicity
Holden, Natalie	Poloni Cordeiro, Lucas
Jetty, Jazia	Romero, Megan
Martinez, Kenneth (12-2016)	Villegas, Briana (05-2017)

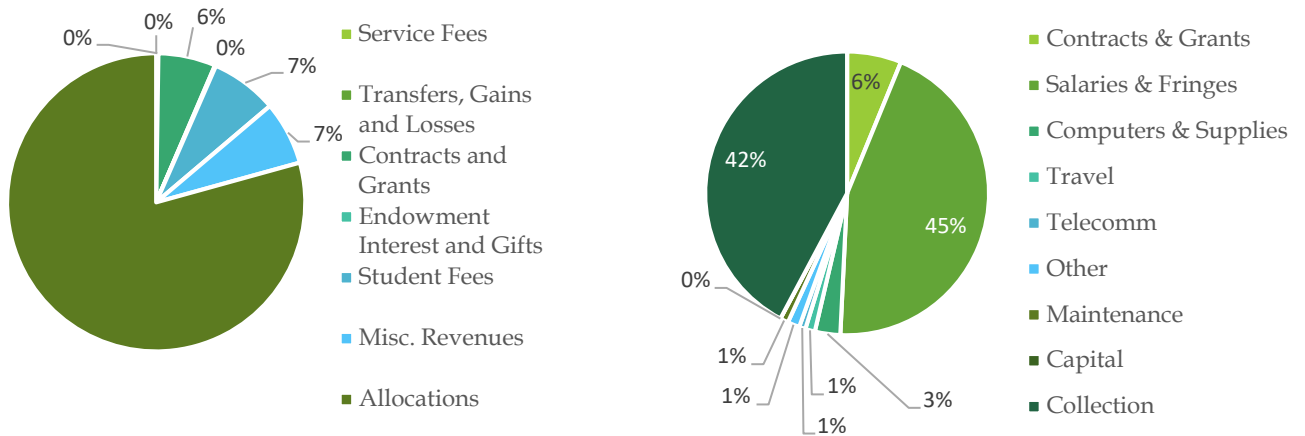
STATISTICS

ADMINISTRATIVE SERVICES

Table 1: HSLIC Personnel

	2014–15	2015–16	2016–17	% Change from Prior Year
Library Services and Education Services				
Professional Staff	7.00	7.00	7.00	0%
Support Staff	9.00	7.50	9.00	20%
Students	2.54	2.00	2.00	0%
Biomedical Informatics				
Professional Staff	4.10	4.90	3.90	-20%
Support Staff	0.00	1.00	1.00	0%
Students	0.00	0.50	0.60	20%
Administration				
Professional Staff	4.00	3.00	3.00	0%
Support Staff	6.60	5.60	6.50	16%
Students	1.34	.79	1.5	90%
Total HSLIC				
Professional Staff	16.50	14.9	13.9	-7%
Support Staff	39.61	14.1	16.5	17%
Students	4.38	3.29	4.10	25%
Total HSLIC Staff	60.49	33.79	34.50	2%

Figure 1: HSLIC Revenue and Expenses



Revenue¹
\$4,085,520

Expenditures²
\$ 4,085,980

¹ Revenue does not include \$37K in collection expenditures incurred directly by other departments.

² Expenditures includes \$130K in encumbered collection expenditures that will post in FY18.

BIOMEDICAL INFORMATICS

Table 2: Biomedical Informatics (BMI) Fellowship and Master of Science in Clinical Research (MSCR) Education

	2014–15	2015–16	2016–17	% Change from Prior Year
Number of BMI Fellows Currently Enrolled	1	1	2	0%
Total Number of BMI Fellows Completing Training (Cumulative)	2	2	2	0%
Total # of Seminar Series Lectures Offered for CME credit	13	14	14	0%
Total # of Seminar Series Attendees	126	139	182	31%
Number of Students Completing Level 1 MSCR BMI Course	6	8	7	-13%
Number of Sections of Level 2 & 3 MSCR BMI Courses Completed by Students ¹	2	4	2	-50%
Total Number of Students Completing MSCR BMI Courses	8	12	8	-33%
Total BMI Credit Hours Taught in MSCR Program	10	17	11	-35%

¹ A student may complete more than one section of Level 2 & 3 MSCR BMI Courses.

DOMENICI CENTER FOR HEALTH SCIENCES EDUCATION

Figure 2: Use of the Domenici Center

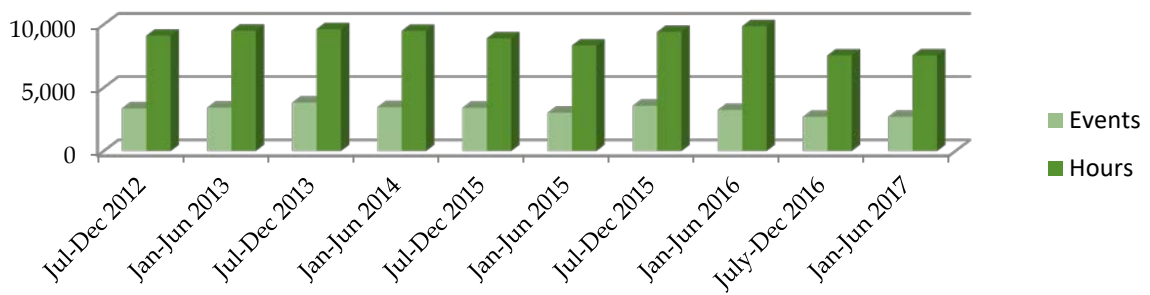
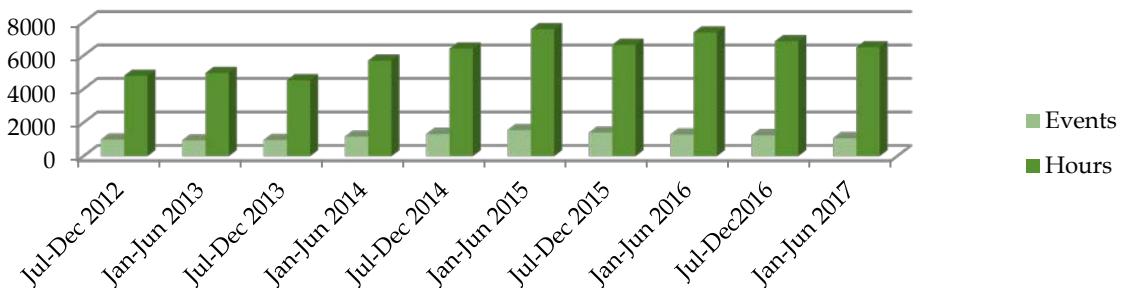


Figure 3: Use of the Interprofessional Healthcare Simulation Center



LIBRARY AND EDUCATION SERVICES

Table 3: Instructional Programs/Orientations

	2014–15	2015–16	2016–17	% Change from Prior Year
Complete Non-Credit Courses Taught by HSLIC Personnel	5	3	3	0%
Complete Credit Courses Taught by HSLIC Personnel	25	21	10	-52%
Total # of Sessions within Courses Above	251	206	102	-50%
# of Guest Sessions within Curricula ¹	215	207	54	-74%
# of In-Person Education Sessions ¹	162	104	74	-29%
# of New Online Synchronized Education Sessions	0	3	0	-300%
Total # of Sessions Taught by HSLIC Personnel	628	520	230	-56%
Attendees	6,367	6,074	3,310	-46%

¹ Decreases reflect curricular changes and more stringent reporting methodology.

Table 4: Distance Services Training

	2014–15	2015–16	2016–17	% Change from Prior Year
Totals: # of Sessions ¹	26	22	37	68%
Attendees	390	611	886	45%

¹ Increase in FY16–17 due to Native Voices Outreach grants.

Table 5: Individual Consultations

	2014–15	2015–16	2016–17	% Change from Prior Year
# of Consultation Sessions	197	256	211	-18%
Attendees	215	309	274	-11%
Total # of Contact Hours	193	281	202	-28%

Table 6: Size of General Collection (Titles)

	Titles 2014–15	Titles 2015–16	Titles 2016–17	% Change from Prior Year
Total Print Monographs	29,043	24,651	24,165	-2%
Total Electronic Monographs	7,994	8,583	9,225	7%
Unique Print Serials	12	6	0	-100%
Electronic Serials Purchased	2,438	2,755	2,834	3%
Total Electronic Serials in Catalog/Listed on Website	21,370	22,302	28,458	28%
Total Accessible Serials	3,035	3,188	3,973	25%
Number of Databases	92	92	92	0%

Table 7: Size of General Collection (Volumes)

	Volumes 2014–15	Volumes 2015–16	Volumes 2016–17	% Change from Prior Year
Total Print Monographs	32,222	31,599	30,838	-2%
Print Volumes in Library	94,565	91,052	89,706	-1%
Physical Nonprint Volumes in Library (Microforms, CD-ROM)	1,216	558	524	-6%
Print Volumes in Remote Storage	44,905	45,533	46,008	1%
Physical Nonprint Volumes in Remote Storage	220	238	249	5%
Total Print Volumes (Monographs & Serials)	137,532	136,674	135,993	0%
Total Physical Nonprint Volumes ¹	1,436	796	773	-3%
Volumes Commercially Bound	45	24	0	-100%

¹ CD-ROMs that accompany books are counted as nonprint volumes.

Table 8: Special Collections Summary Table

	2014–15	2015–16	2016–17	% Change from Prior Year
Manuscripts (archives in linear feet)	1,995	1,995	2,046	3%
Photos/Slides/Negatives ¹	7,740	7,740	7,740	0%
Audio ¹	701	701	701	0%
Film/Video/Disks ¹	172	172	202	0%
Total Graphic Materials	9,122	9,122	9,184	1%
Number of Digitized Collections	135	137	137	0%
Size of Collections (Megabytes)	152,000	159,000	159,000	0%
Total Items in Digitized Collections	4,339	4,983	4,983	0%
Number of Times Accessed	Unavailable	Unavailable	Unavailable	NA
Volumes/Pamphlets Digitized	65	65	65	0%
Unbound Sheets Digitized	9,023	9,353	9,353	0%
Photographs/Non-Paper Items Digitized	2,077	2,575	2,575	0%
Total # of Lectures Sponsored by Special Collections	2	0	0	0%
Total # of Lecture Attendees	110	0	0	0%

¹ Actual number of items.

Table 9: Local Collections

	2014–15	2015–16	2016–17	% Change from Prior Year
Native Health Database				
Size in Megabytes	45.75	50.19	61	22%
Total # of Items	9,453	9,808	9,884	1%
Number of Times Accessed	4,224	3,909	3,521	-10%
UNM Digital Repository (HSC Collections)				
Items Contributed	300	99	297	200%
Usage	Unavailable	Unavailable	Unavailable	NA

Table 10: Collection Development (General Expenditures — Dollars)

	2014–15	2015–16	2016–17	% Change from Prior Year
Print Monographs	\$20,672	\$30,549	\$10,356	-66%
Electronic Monographs ¹	\$183,138	\$309,928	\$147,614	-52%
Print Serials ²	\$8,042	\$6,093	\$0	-100%
Electronic Serials	\$1,135,059	\$1,116,515	\$1,148,040	3%
Electronic Databases ¹	\$275,635	\$379,989	\$353,988	-7%
Other Library Materials (Media)	\$13,745	\$4,616	\$55	-99%
Subtotal ¹	\$1,636,291	\$1,847,698	\$1,660,053	-17%
Bibliographic Utilities	\$32,699	\$27,237	\$26,619	-2%
ILL Expenditures ³	\$8,030	\$20,994	\$37,932	81%
Total ¹	\$1,677,020	\$1,895,920	\$1,724,604	-9%
Consortial Expenditures	\$304,644	\$368,879	\$498,224	35%
Electronic Resources	\$1,593,832	\$1,806,432	\$1,649,642	-9%

¹Increase in collection expenditures in FY16 due to GO Bond funding, catch-up spending of Foundation funds and pre-payments for the next fiscal year.

²Remaining print serials canceled in FY17 due to budget cuts.

³ Method for calculating ILL expenditures changed in FY17 to include OCLC ILL services, shipping and copyright charges.

Table 11: Resource Use: Interlibrary Loan (ILL) and Document Delivery (DD) Summary

	2014–15	2015–16	2016–17	% Change from Prior Year
Total ILL Items Received	2,149	3,442	3,003	-13%
Returnable ILL Items Received	NA	191	236	24%
Non-Returnable ILL Items Received	NA	3,251	2,767	-15%
Interlibrary Loan Fill Rate	65%	61%	59%	-3%
% of Fills Done with Electronic Resources	72%	71%	58%	-18%
Total ILL Items Provided to Other Libraries	1,062	1,064	911	-14%
Returnable ILL Items Provided	NA	87	53	-39%
Non-Returnable ILL Items Provided	NA	977	858	-12%
Items Copied for Affiliated Users	1,542	3,075	2,771	-10%
Items Copied for Unaffiliated Users	91	443	343	-23%
Total Document Delivery	1,633	3,518	3,114	-11%

Table 12: Use of Library Physical Materials

	2014–15	2015–16	2016–17	% Change from Prior Year
Checkouts, All Formats	14,282	13,265	11,862	-11%
Initial Circulations	10,624	11,921	9,909	-17%
Renewals	1,711	1,344	1,041	-23%
Print Reserves	Unavailable	Unavailable	912	NA
In-House Use	2,275	2,281	1,578	-31%
Total Use	16,557	16,995	13,440	-21%

Table 13: Use of Course Reserves

	2014-15	2015-16	2016-17	% Change from Prior Year
Reserves Total Use	Unavailable	Unavailable	38,873	NA
Circulation of Print Material	Unavailable	Unavailable	912	NA
Electronic Use	Unavailable	Unavailable	37,961	NA
Number of Courses Using Course Reserves	Unavailable	Unavailable	69	NA
Number of Courses with E-Reserves	Unavailable	Unavailable	27	NA

Table 14: Use of the Library Building

	2014-15	2015-16	2016-17	% Change from Prior Year
Annual Gate Count	189,422	191,052	188,801	-1%
Group Study Room Reservations	1,896	3,230	5,222	62%
Electronic Classroom Reservations (226 & Med 2)	819	637	627	-2%
Classrooms on Wheels Reservations	331	261	217	-17%
HSSB Testing Center Reservations	84	41	79	93%
Individual Study Room Use	1,344	1,642	1,296	-21%
Mother’s Room Use	395	219	217	-1%

Figure 4: Patrons in the Library Building (Average)

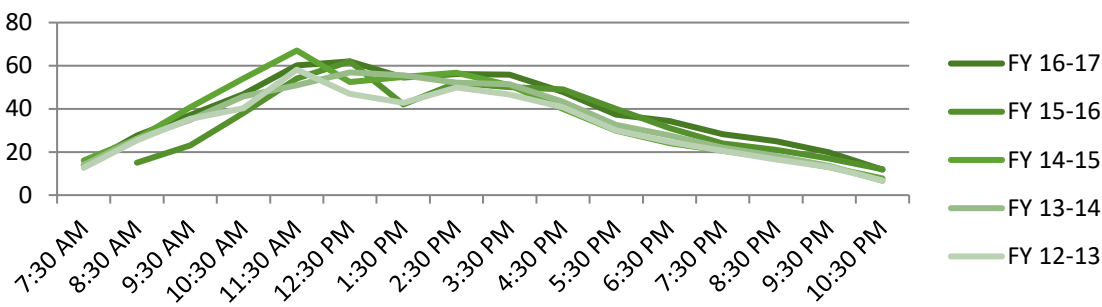


Figure 5 Patrons in the Library Building (Maximums)

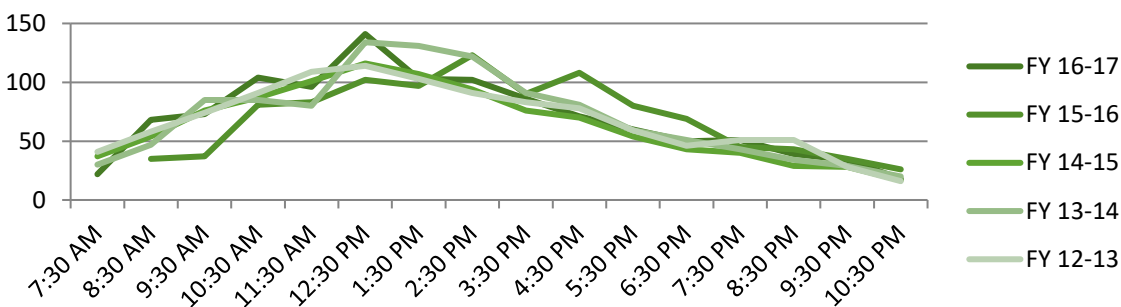


Table 15: Use of Electronic Collection

	2014–15	2015–16	2016–17	% Change from Prior Year
Electronic Monograph Requests (est. uses) ¹	354,766	206,842	212,709	3%
Electronic Serials Full-Text Requests (est. uses)	820,521	942,377	1,126,371	20%
Database Requests (est. based on search data)	727,562	1,244,157	1,652,152	33%
WorldCat Searches	Unavailable	Unavailable	245,322	NA
WorldCat Visitors	Unavailable	Unavailable	131,116	NA
Electronic Subject Guide Views	38,677	54,385	86,899	60%
Total Electronic Resources Use	1,941,526	2,447,761	2,852,538	17%
Total # Page Views for HSLIC Website	304,231	1,301,063	1,078,012	-17%

¹ Decrease in Electronic Monograph Requests and a corresponding increase in Database Requests were due to a change in counting VisualDX usage as a database rather than an electronic monograph.

² Docutek was discontinued in 2015.

Table 16: Number of Mediated Searches and Reference Questions¹

	2014–15	2015–16	2016–17	% Change from Prior Year
Mediated Searches	146	188	208	11%
Reference Questions (In Person & Via Phone) ¹	1,538	938	1,428	52%
Electronic Reference Questions (Email)	428	373	378	1%
Total Reference Questions ¹	1,966	1,311	1,806	38%
Total Reference Questions & Mediated Searches	2,112	1,499	2,014	34%

¹ An error was found in calculating reference questions, and this table was revised for FY14–FY16 to reflect corrections. Annual reports for previous years will still reflect this error.

FREQUENTLY REQUESTED STATISTICS

	10 Years Ago 2006–07	5 Years Ago 2011–12	2015–16	2016–17
Total Volume Holdings	153,627	148,704	139,930	137,006
Print Serial Subscriptions	97	42	36	0
Electronic Serials Subscriptions	2,090	1,807	2,755	2,834
Total Serials Subscriptions	2,198	1,843	2,761	2,834
Number of Databases	134	162	92	91
Amount Spent by Consortia¹	\$55,030	\$258,710	\$368,879	\$498,224
Total Collection Expenditures Excluding Binding & ILL	\$973,322	\$1,451,403	\$1,895,920	\$1,530,072
Gate Count	244,154	200,104	191,052	188,801
Use of Library Materials (Print, Reserve, Media, Both In-Library and External Circulations)	31,847	17,793	16,995	13,440
Use of Electronic Resources, Including Databases²	4,063,666	1,386,346	2,447,761	2,852,538
Total Reference Transactions, Including Literature Searches³	8,004	6,979	1,499	2,014
Total ILL Items Received (Borrowing)	2,025	1,255	3,442	3,003
Total ILL Items Provided to Other Libraries (Lending)	2,564	804	1,064	911
Items Copied for Patrons	279	265	3,518	3,114
Library Presentations to Groups, Including Orientations & Tours⁴	549	814	520	230
Participants in Library Presentations	5,733	6,415	6,074	3,310
HSLIC Home-Page Views	1.9M	908,158	1.3M	1.1M
Publicly Accessible Computers (Inside Library)	73	56	65	69
Public Seating	320	371	469	478
Number of Group Study Rooms	5	8	8	9
Number of Square Feet in Library⁵	44,171	44,171	37,030	37,030
Total FTE	78.9	62.13	33.50	34.50
Service Hours per Week	94.5	94.5	94.5	94.5

¹ Prior to FY08-09, consortial expenses included only expenses external to UNM.

² Prior to FY08-09, website views were included in "Use of Electronic Resources, Including Databases."

³ An error was found in calculating reference questions, and the date was revised for FY14-16 to reflect corrections. Annual reports for previous years will still reflect this error.

⁴ In FY16-17 the methodology was revised for counting library presentations to groups.

⁵ HSLIC revised its library square-footage calculation in FY14-15 to reflect more accurate building information available using the FAMIS system. In FY15-16, some HSLIC space became part of the HSC CIO's Office.