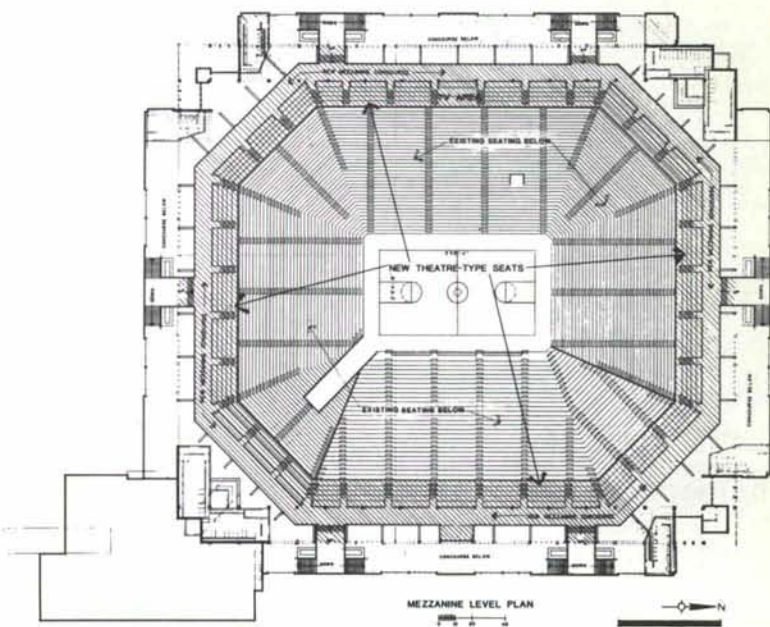
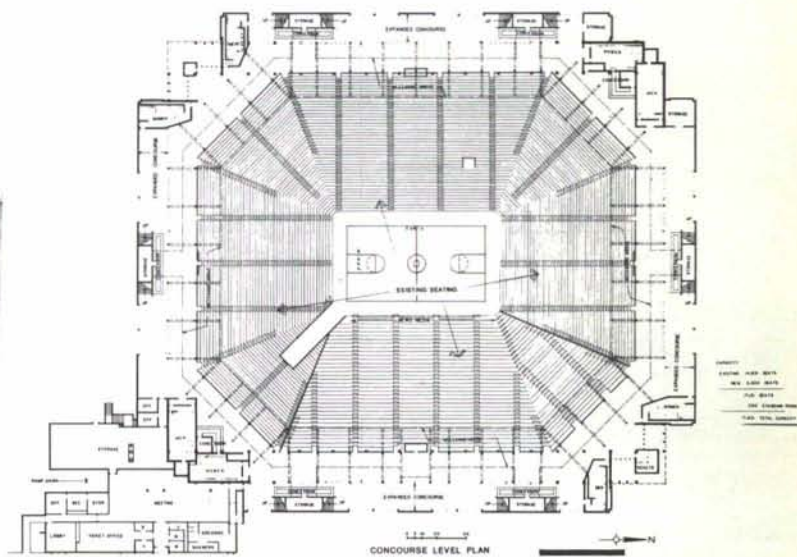
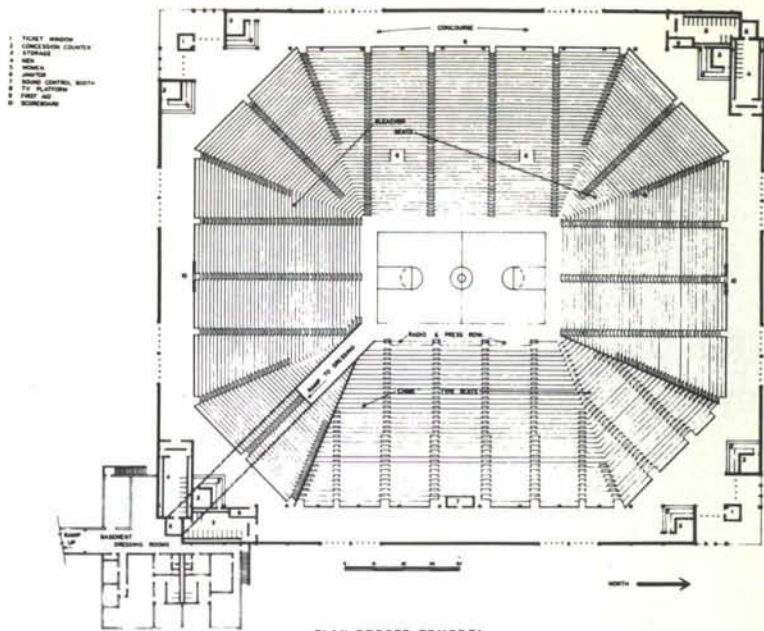
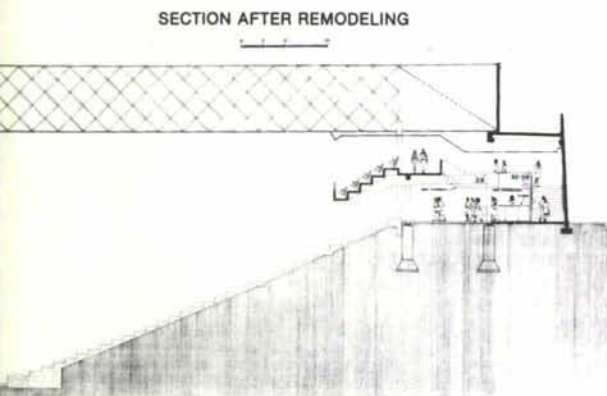
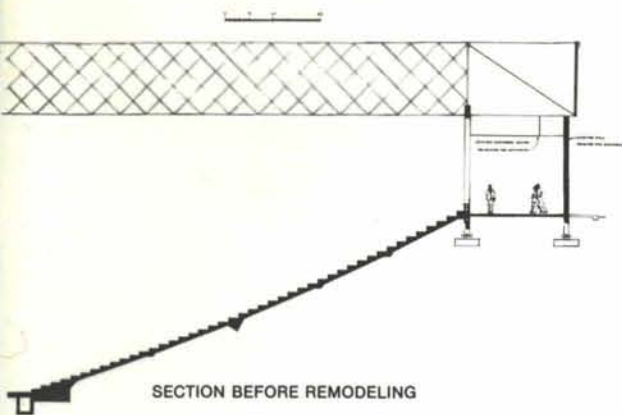




The UNM Arena expands. . .

- Architect..... Joe Boehning, A.I.A.
- Structural Consultant..... Cottrell-Vaughan & Associates
- Mechanical Consultant..... Bridgers & Paxton
- Electrical Consultant..... Uhl & Lopez
- Acoustical Consultant..... C. P. Boner, (Austin, Texas)
- Graphics..... Corey Planning & Design Group (New York)
- Contractor..... George A. Rutherford
- Photographer..... Jerry Goffe



In 1966, the University of New Mexico constructed University Arena in the athletic complex on the South Campus. The 14,859 seat facility was constructed for a cost of \$1.5 million. The facility was designed primarily for basketball. However, it also serves for shows such as Bob Hope, Bill Cosby, Lawrence Welk, and the Rolling Stones. It has also housed commencement, boxing matches, and the ordination of the Archbishop of Santa Fe. In 1971 and 1974 UNM led the nation in collegiate basketball for home attendance. Thousands of fans had to be turned away each year because of lack of seats. It was mandatory that additional seating capacity be constructed.

In 1974, UNM hired the same architect to design the expansion



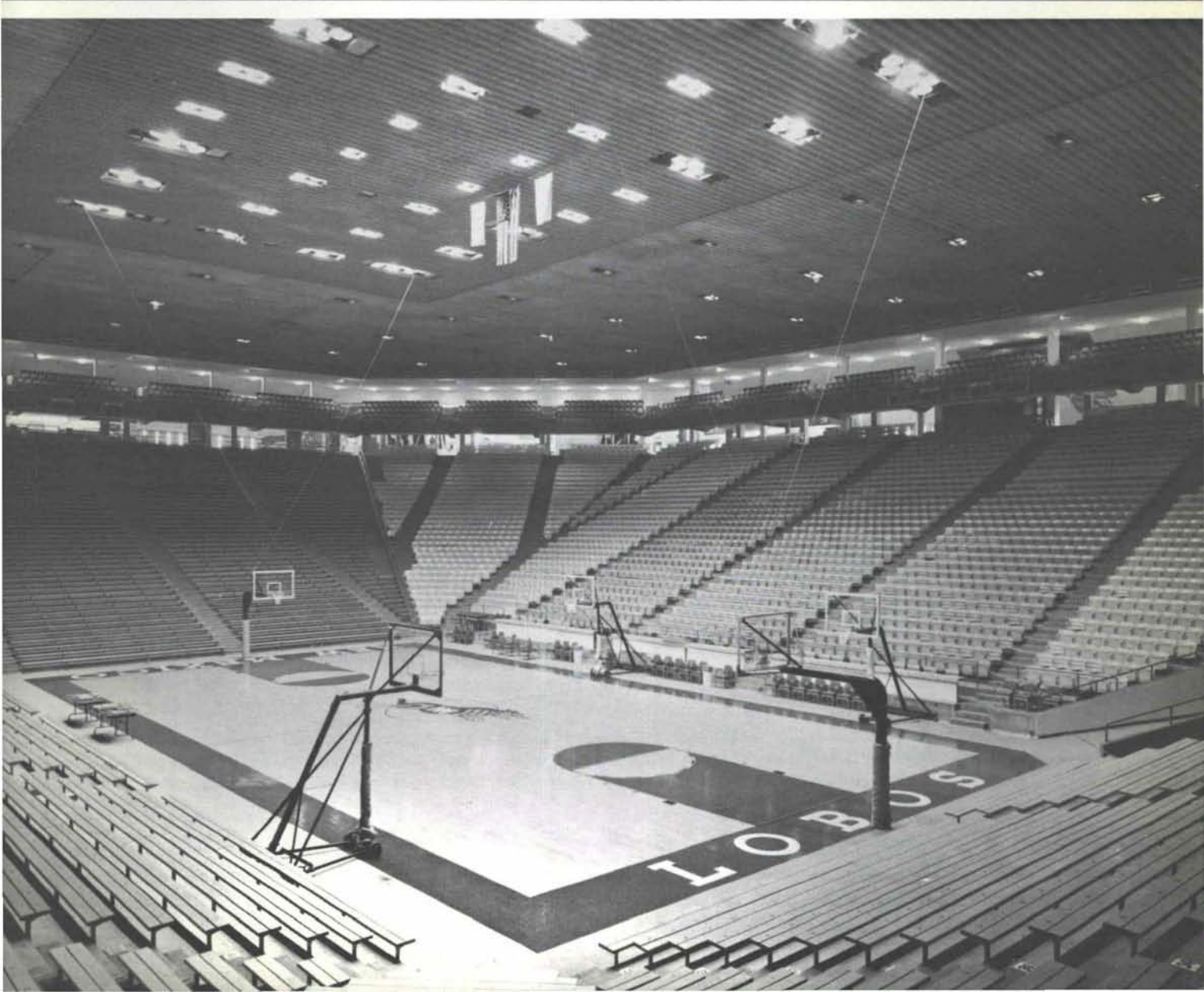
◀ Before

And

After



Note:
These two "before
photographs are
Dick Kent.





new seats carried around the perimeter of the building to match the original concept. A new mezzanine concourse is located behind these new seats, again to maintain the original concept. These new mezzanine seats are made accessible to the main concourse level with six stairways. Six new concession stands were designed to integrate with the stairways. Four new restrooms were added to double the restroom capacity.

In order to widen the main concourse, the existing exterior walls were removed. These walls were replaced by precast concrete columns and beams which help support the cantilevered mezzanine structure. The large expanses of interior wall in the enlarged concourse have been decorated with supergraphic basketball players. The new walls and roof that enclose the widened concourse are of precast concrete. The exterior wall panels were finished with an adobe colored cement finish to help relate the building to the architecture on the main campus.

The original facility had a landscaped space between the exterior walls and the sidewalk. The expanded concourse absorbed this space. The owner intends to landscape the dividers at the parking lots.

One important feature of the 8,000 square foot addition in the southeast corner is the meeting room. This meeting room will serve several functions:

- 1) Special meetings of UNM groups.
- 2) Lounge for VIP spectators at intermissions.
- 3) Recruiting of athletes.
- 4) Use of press during large tournaments.

Construction of the \$2 million addition was accomplished in the eight-month span between basketball seasons. The new seating, along with standing room on both levels, has increased the capacity to over 18,000. The largest crowd for the 1975-76 season was 18,962. The total attendance for the 1975-76 season was 241,521, the third largest season attendance in the history of the NCAA. J. B.

and remodeling. The primary design requirement was to maintain the same open concept that made the original structure so successful. The extremely tight budget for the original structure left it with: a concourse that was too narrow; too few restrooms; and too few concession stands. The expansion also had to correct these problems. In addition to these improvements,

an 8,000 square foot office and storage building was to be constructed over the basement dressing rooms at the southeast corner, and all dressing rooms were to be remodeled. All athletic ticket sales will be handled from this building.

A total of 2,300 new chair back seats were added by cantilevering five rows of seats over the back of five rows of existing seats. These