

Offices for Drs. Corcoran, Barkoff & Stagnone, PA--Dermatologists Albuquerque

Architect—Joe Boehning, AIA

Landscape Consultant—Taro's Gardens

Interior Consultant—Margaret Waller, AID

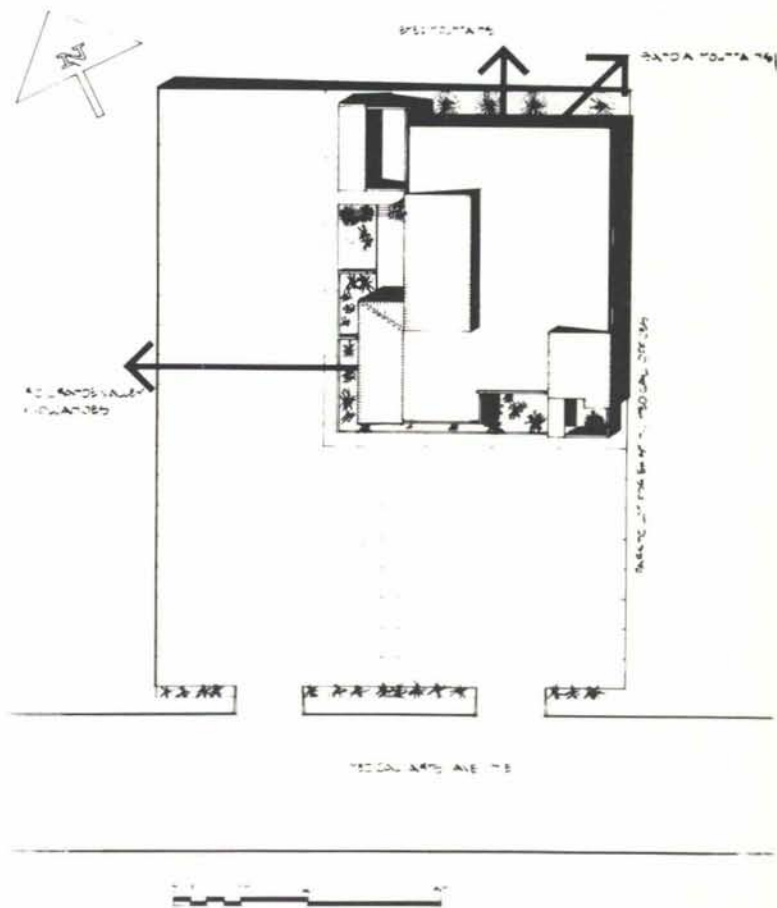
Contractor—John R. Lavis

Photography—Jerry Goffe

THE SITE—

The building is sited on a small piece of land with a steep slope down to the west and north. The view to the west includes the Rio Grande Valley and the volcano formations on the west mesa of Albuquerque. The building was located on the extreme northeast corner of the site in order to take advantage of the higher ground for the view to the west.

The practice of dermatology requires a ratio of parking spaces to doctors that is much higher than normal; thus most of the land area not occupied by building had to be devoted to parking. The parking area on the west side of the building is about four feet below finish floor level so the view to the west is not obstructed.

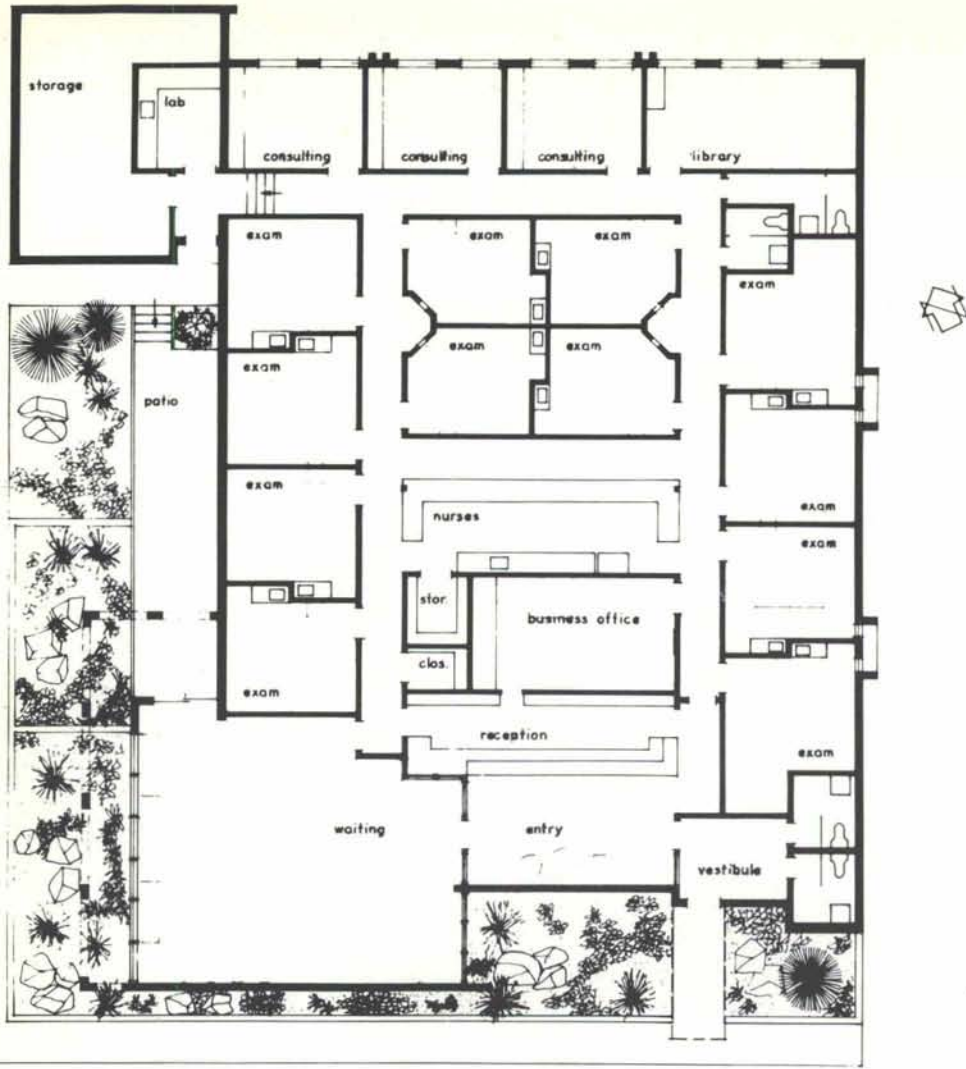


SITE PLAN

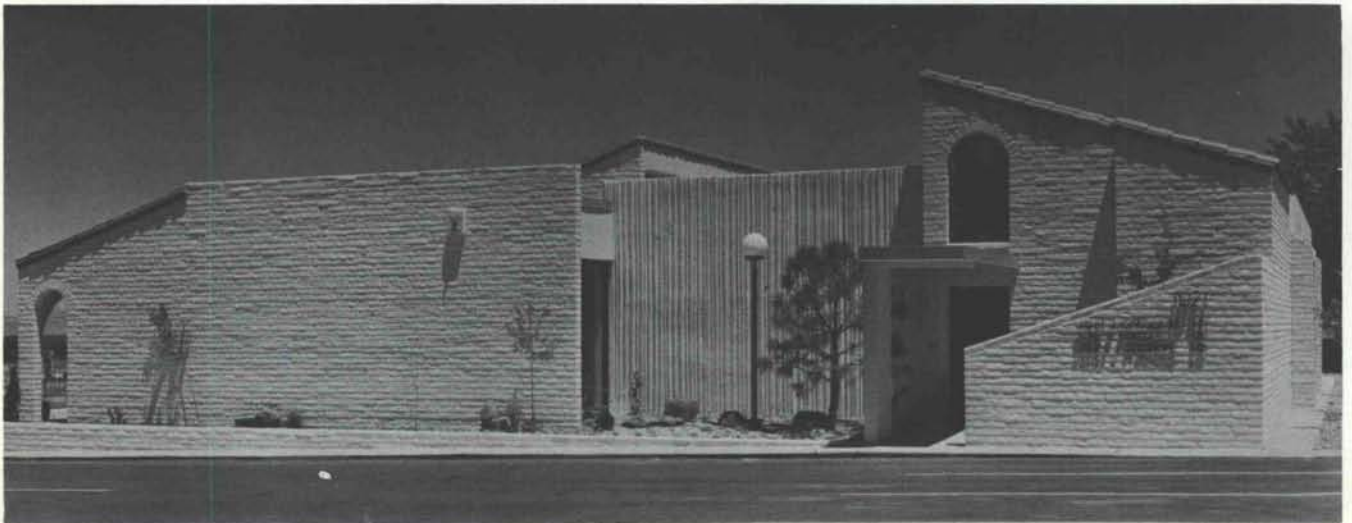
THE BUILDING—

Nurses' station, reception desk, and business office form the heart of the building. Examination rooms are all within visual access from the nurses' station. Colored lights over each room's door



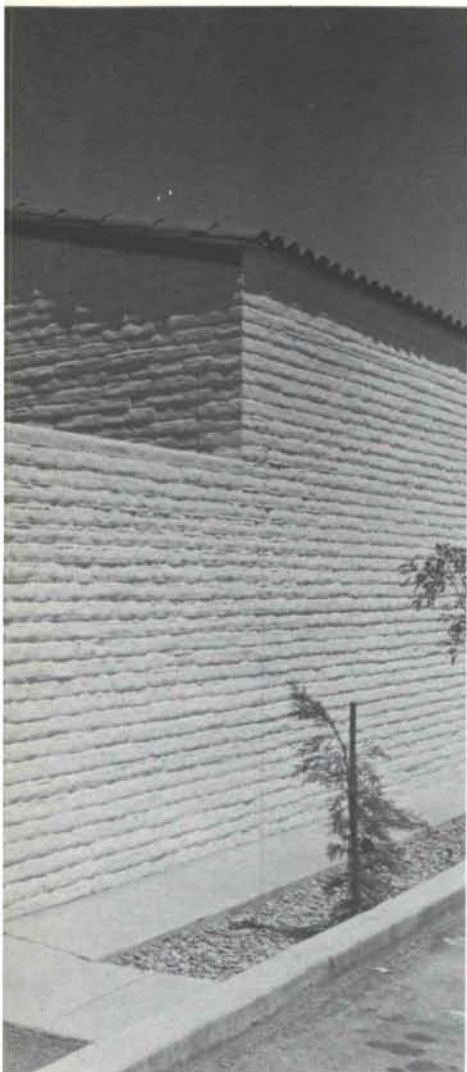


FLOOR PLAN









indicates which doctor is needed in a specific examination room. The lights also indicate when a nurse is needed in a specific examination room.

Patient traffic flow within the building is of extreme importance. From main entrance, patients go to reception desk and then to waiting room. Large windows in waiting room provide a relaxing view of the river valley and volcanoes to west. These windows are protected with an arched canopy and the glass is reflective. No draperies are required to eliminate the west sun. From the waiting room, patients are easily escorted to their examination room. Patients exit past reception desk so they can make a next appointment with the receptionist.

Doctors' private offices and library are along the north

side, out of way of patient traffic. Private offices are not used by patients.

Rooftop mechanical unit is located over storage room at northwest corner of building, and is hidden from view with masonry wall and partial tile roof.

Exterior walls are slump block covered with a skim coat of white Portland cement inside and out. Portions of the roof are red clay tile. All interior floors are carpet with the exception of the vestibule and entry which are buff-colored quarry tile. All interior partitions are vinyl-surfaced drywall, except for some walnut paneling in the waiting room. A special vinyl surfacing with bold vertical stripes was applied to counter faces in the reception and nurses' station as well as on the wall directly opposite the nurses' station. —J. B.



Kill 2 birds with it.

1. The Structural System.

2. The Enclosure Walls.

With loadbearing masonry, structural system and enclosure walls are one and the same.

Thin, straight brick or concrete block walls.

They work together with floor and roof systems to create a strong structural shell for both high and low buildings. And they provide low maintenance, high efficiency enclosure walls and interior partitions.

So you save time. And money. And materials.

For example, you can begin finish work on one floor while masons erect the one above it. You have excellent sound control and fireproofing. And you can offer the inimitable beauty of exposed interior masonry walls. All at no additional cost.

The savings don't end with construction.

You'll spend less on maintenance, because masonry doesn't warp, dent, bend, buckle or rot. And it never needs painting.

So there you have it. A lot of birds. One stone.

Loadbearing masonry.



The International Masonry Institute

Suite 1001, 823 15th St., N.W., Washington, D.C. 20005, 202-783-3908

MASON CONTRACTORS ASSOCIATION OF NEW MEXICO